

HOMELITE DIVISION OF TEXTRON INC.

P.O. BOX 7047
14401 CAROWINDS BOULEVARD
CHARLOTTE, N.C. 28217

Leon's Chainsaw Parts & Repair
Do Not Sell or Reproduce

2978YY

HOMELITE **TEXTRON**

Homelite Division of Textron Inc.

parts list



HOMELITE®
VI Super 2
VI Super 2 SL
Chain Saws

HOMELITE **TEXTRON**

Homelite Division of Textron Inc.

VI Super 2, VI Super 2 SL

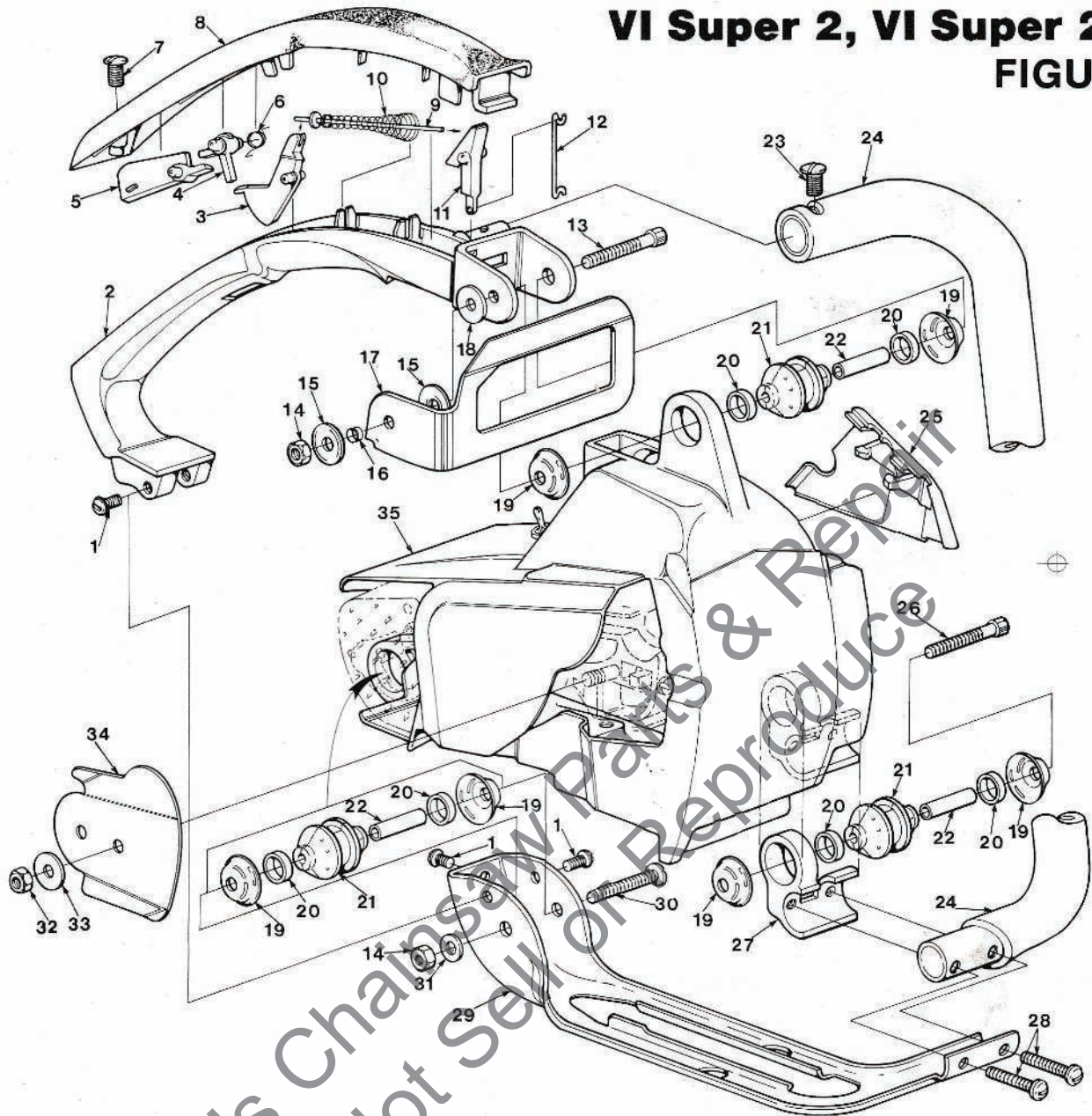
ACCESSORIES

GASKET- Oil pump body	69596
KIT- Spark arrestor (for A-69253-1 Muffler)	A-69586-B
Includes:	
SCREW- Self tapping (#6 x 1/4) (3)	80328
KIT- Hand guard (units without Chain Brake)	A-70796-A
Includes:	
SCREW	82312
SCREW- (10-32 x 5/8)	80572
WASHER- Belleville (2)	70728
SPACER	70748
ROPE- Starter #4 (250 ft.)	68848
SAFE•T•TIP® (Pat. Pending)	A-70776-A
Includes:	
SCREW- (8-32 x .437)	93695
TUBING- Rubber (10 ft.)	70309-99
TUBING- Rubber (10 ft.)	70310-99

TOOLS

PULLER- Magneto rotor	A-24747-A
Includes:	
BOLT- 5/16 - 18 x 1 3/4	80288
NUT- Hex 5/16 - 18 (2)	81196
WRENCH- Hex soc. 5/32 (for 10-24 screw)	22126
WRENCH- Hex soc. 9/64 (for 8-32 screw)	23528
WRENCH- Spanner (Clutch)	A-93791
Includes:	
PIN	23717-A
WRENCH- Flat (for guide bar nut)	24814
DRIVE- Check valve (for HDC-58 Carb.)	24972
PLIERS- Tur-Arc	17198

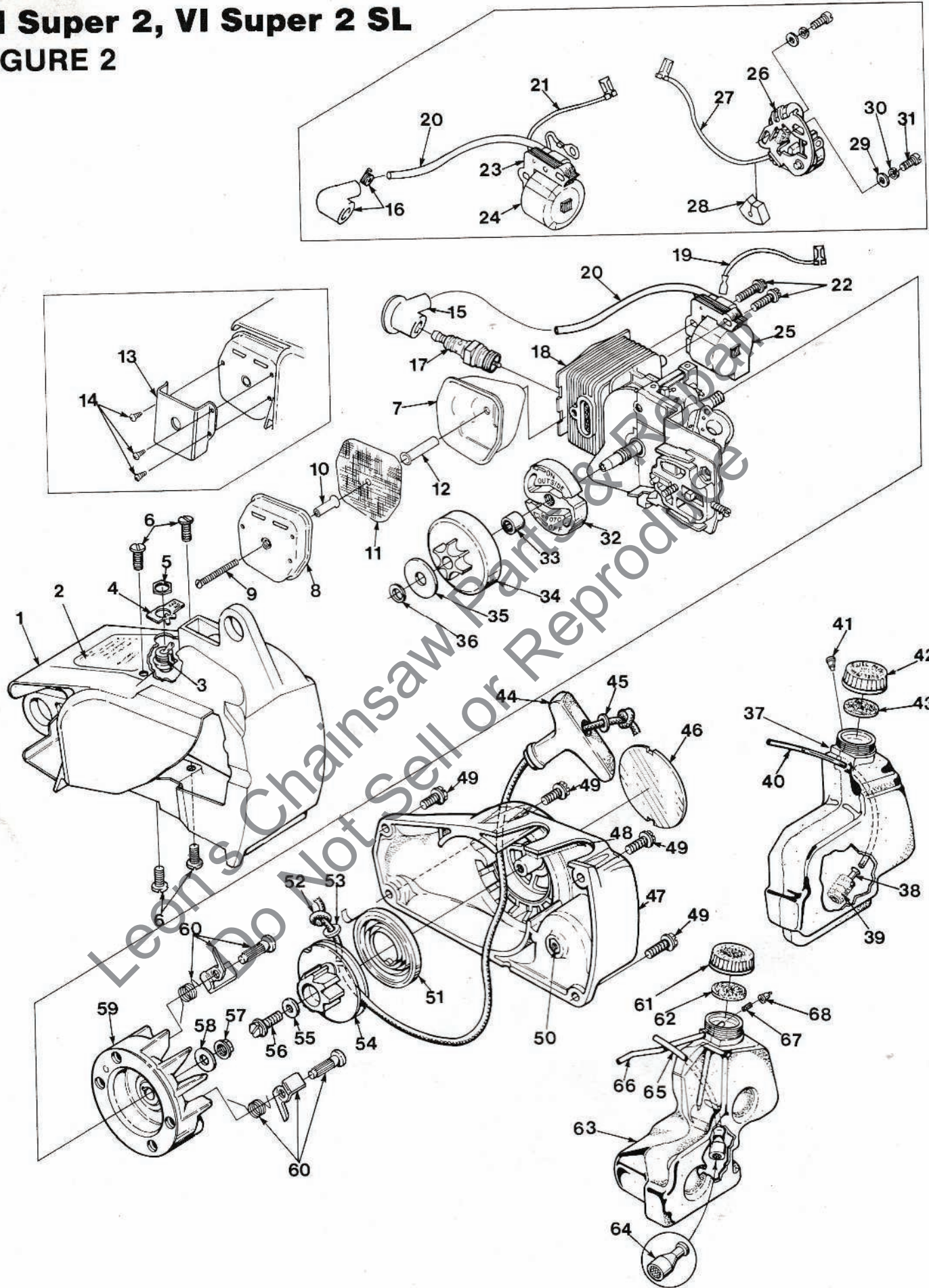
VI Super 2, VI Super 2 SL FIGURE 1



No.	Description	Part No.	Qty.	No.	Description	Part No.	Qty.
1	SCREW- Pan hd. (8-32 x 3/8)	80577-2	3	20	RING- Isolator	70432	6
2	HANDLE- Throttle	70568-2	1	21	ISOLATOR- Vibration	70485-A	3
3	TRIGGER-	70619	1	22	SPACER- Isolator	70433	3
4	STOP- Throttle safety	70593	1	23	SCREW- Pan washer hd (10-32 x 5/8)	82239	1
5	LEVER- Throttle safety	70594	1	24	HANDLE BAR	A-70604	1
6	SPRING- Torsion	70591	1	25	COVER- Air filter	70571	1
7	SCREW- Pan hd. (#10-32 x 5/8)	82239	1	26	SCREW- Cap hex soc. (10-32 x 1 3/4)	82310	1
8	COVER- Handle	70626	1	27	BRACKET- Isolator mtg.	70558-2	1
9	ROD- Throttle	A-70614	1	28	SCREW- Hex hd. (10-32 x 1 3/16)	80841	2
10	SPRING- Throttle rod	69249	1	29	BRACE- Handle	70554-1	1
11	LEVER- Throttle	69107	1	30	SCREW- Pan hd. (10-32 x 1 3/4")	82317	1
12	ROD- Throttle	70612	1	31	WASHER- Flat (10)	84008	1
13	SCREW- Cap hex soc. hd. (10-32 x 2")	†82321	1	32	NUT- Guide bar (1/4-28)	81065-2	1
14	NUT- Hex (10-32)	81206	2	33	WASHER- Flat	69309-1	1
15	WASHER- Belleville	†70728	2	34	PLATE- Guide bar	69360	1
16	SPACER- Hand guard	†70748	1	35	HOUSING- Engine (see fig. 2 for breakdown)	A-70662-B	1
17	GUARD- Hand	†70802-1	1				
18	WASHER- Flat	70632	1				
19	WASHER- Isolator	70440-A	6				
					† VI Super 2 only		
					‡ VI Super 2 SL only		

VI Super 2, VI Super 2 SL

FIGURE 2



VI Super 2, VI Super 2 SL

FIGURE 2

No.	Description	Part No.	Qty.	No.	Description	Part No.	Qty.
1	HOUSING- Engine Includes:	A-70662-B	1	40	TUBING- Rubber	70310-29	1
2	PLATE- Instructions	70835	1	41	VALVE- Check (Duckbill)	69451	1
3	SWITCH- Stop (grounding) Includes:	A-63938	1	42	CAP- Fuel (Red) Includes:	A-70894-A	1
4	PLATE- "ON - OFF"	70834	1	43	GASKET- Filler cap (See Note 3)	94838	1
5	NUT- Hex	72084-A1	1	44	GRIP- Starter rope	70211	1
6	SCREW- Pan hd. (10-24 x 1/2)	82216	4	45	WASHER- Flat	84025	1
7	MUFFLER Includes:	A-94051-A	1	46	DECAL- (VI SUPER 2)	70800	1
8	CAP- Muffler	93985	1	47	HOUSING- Rewind starter Includes:	A-70663	1
9	SCREW	82320	1	48	FILTER- Fuel tank valve	69443	2
	SPARK ARRESTOR	A-94139	1	49	SCREW- Hex washer hd. (10-32 x 5/8)	80572	4
	Includes:			50	NUT- Center locking hex (#10-32)	81206	1
10	SPACER	93989	1	51	SPRING- Rewind	69217	1
11	SCREEN- Spark arrestor	D-93991	1	52	ROPE- Starter #4, 34" long Includes:	A-93874	1
12	SPACER	93990	1	53	WASHER- Nylon	93862	1
13	KIT- Muffler temperature (VI SUPER 2W) Includes:	A-93993	1	54	PULLEY- Starter	69158	1
14	SCREW- #4 x .250	82342	3	55	WASHER- Flat	63606	1
	SPACER- (See Index #10)	93989	1	56	SCREW- 10-32 x 5/8	80704	4
	SCREEN- Spark arrestor (See Index #11)	D-93991	1	57	NUT- Rotor 5/16-24	81229	1
	SPACER- (See Index #12)	93990	1	58	WASHER- Flat	69145	1
15	TERMINAL- Spark plug (Solid State) (Serviced with item #16)			59	ROTOR & STARTER PAWL- (Solid State)	A-94717	1
16	TERMINAL- Spark plug (Point ignition)	A-33055	1		ROTOR & STARTER PAWL- (Point ignition)	A-69297-A	1
17	SPARK PLUG- Champion DJ-7J	68616-S	1		Includes:		
18	CYLINDER & CRANKCASE- (VI Super 2) CYLINDER & CRANKCASE (VI Super 2SL)	A-95072	1	60	KIT- Starter pawl (See Note 4)	A-70285-A	2
		A-95073	1	61	CAP- Tank oil	A-70893-A	1
19	LEAD- Ground (Solid State)	A-94721	1		Includes:		
20	LEAD- High tension (See Note 1)	69326	1	62	GASKET- Fuel filler cap (See Note 3)	94838	1
21	LEAD- Ground (Point Ignition)	A-95051	1	63	TANK- Oil	A-70583	1
22	SCREW- Hex w/washer (8-32 x 3/4)	82248	2		Includes:		
23	CORE- Coil (Point ignition)	69324	1	64	FILTER- Oil	A-68593	1
24	COIL- Ignition (Point ignition) RETAINER- Coil (Not shown) (Point ignition)	69323	1	65	TUBING- Rubber	70309-24	1
		69325	1	66	LINE- Pressure	A-69358	1
25	MODULE- Ignition (Solid State)	A-94711	1		Includes:		
26	POINT SET- Breaker (Point ignition)	A-69336	1	67	CONNECTOR- Oil line	69659-1A	1
	Includes:			68	VALVE- Check (Duckbill)	69451	1
27	LEAD- Electrical (Point ignition)	70249	1				
28	SEAL- Lead (Point ignition)	69247	1				
29	WASHER- Flat (Point ignition)	84025	2				
30	WASHER- Lock (Point ignition)	83060	2				
31	SCREW- Fil hd. (6-32 x 3/8) (Point ignition)	88026	2				
32	CLUTCH- "S" (See Note 2)	A-70351-A	1				
33	BEARING- Clutch	68512	1				
34	SPROCKET & DRUM	A-70221-C	1				
35	WASHER- Thrust (CLutch)	69138	1				
36	RING- Retaining (See Note 2)	93972	1				
37	TANK- Fuel Includes:	A-70582	1				
38	FILTER- Fuel Includes:	A-69923	1				
39	ELEMENT- Felt	64083	1				

NOTE 1: For Solid State Ignition cut wire to 6 1/2".

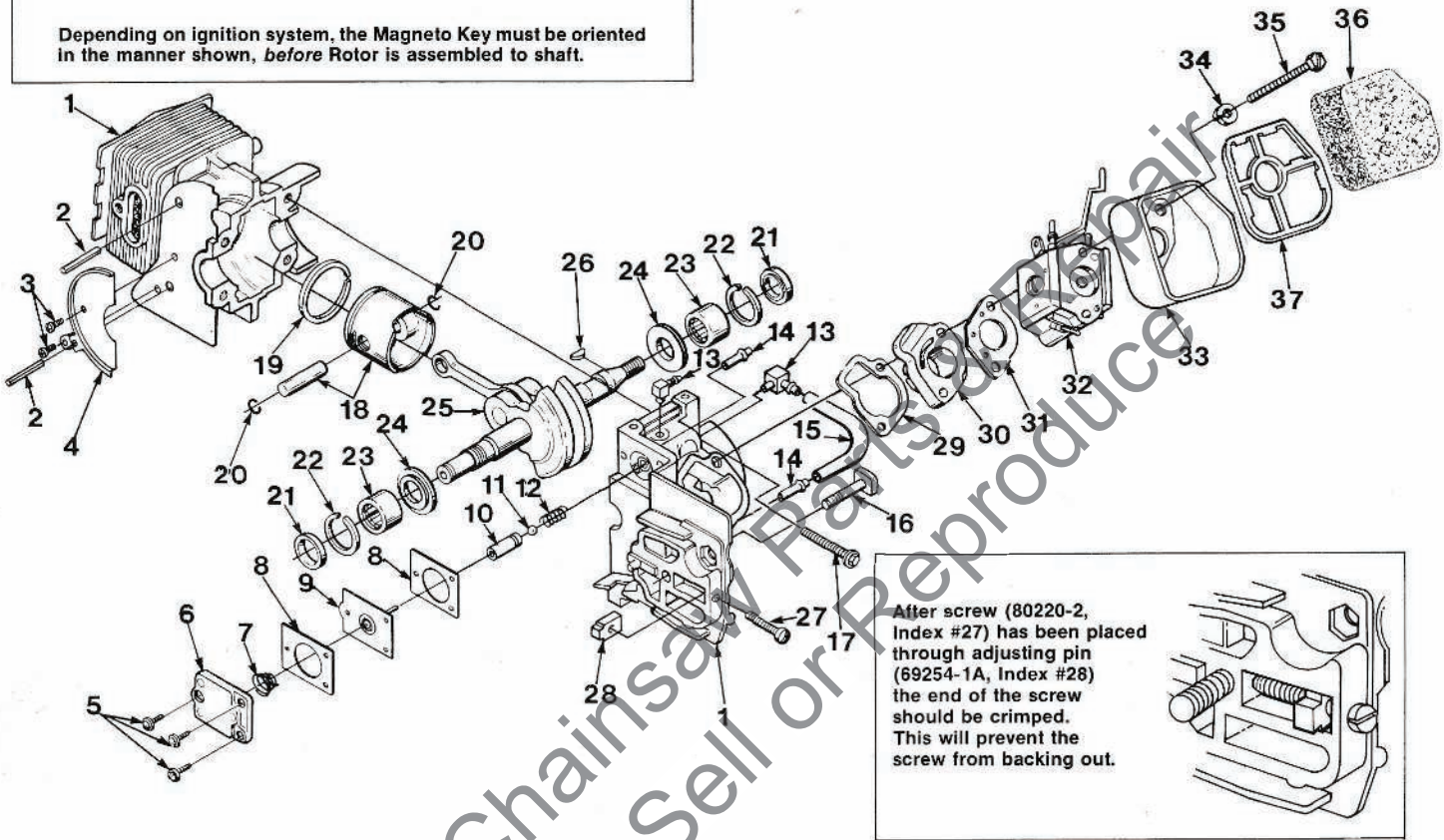
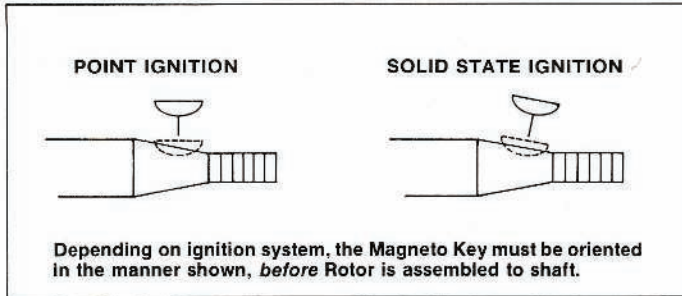
NOTE 2: Retaining Ring, item 36, must never be reused once it has been removed. Item 36, is included with both item 32 and 34.

NOTE 3: Use 70826 Gasket in A-70893 and A-70894 external thread caps. Use 69585 Gasket for caps with internal threads.

NOTE 4: Replacement Starter Pawl Kit, item #60 includes an oversized pin. Paint, stamp or mark to identify oversize pin when installing. Oversize pin can be installed tightly only once. If oversize pin is removed, the entire rotor assembly must be replaced.

VI Super 2, VI Super 2 SL

FIGURE 3

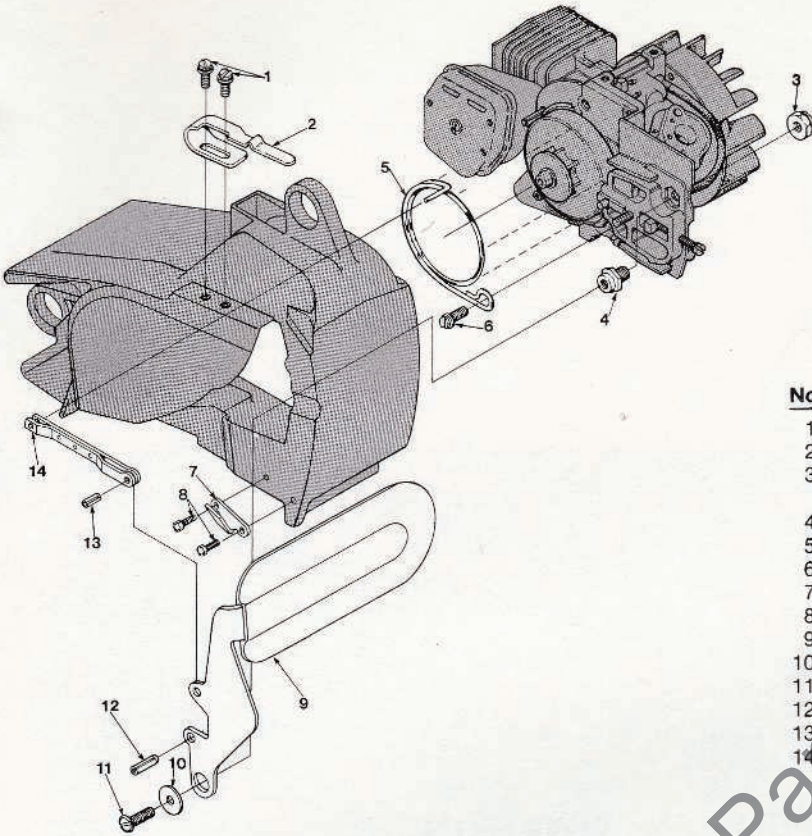


No.	Description	Part No.	Qty.	No.	Description	Part No.	Qty.
1	CRANKCASE & CYLINDER- (Solid State) VI Super 2	A-95072	1	15	LINE- Oil	70161	1
	CRANKCASE & CYLINDER- (Point ignition)	A-70226	1	16	BOLT- Guide bar	69195	1
	CRANKCASE & CYLINDER- (Solid State) VI Super 2SL	A-95073	1	17	SCREW- Sem hex hd., 8-32 x 1	88044	4
	CRANKCASE & CYLINDER- (Point ignition)	A-70837	1	18	PISTON & PIN	A-70224-A	1
	Includes:			19	PISTON RING	70205	1
2	PIN- Roll (VI Super 2SL only)	70763	2	20	RING- Piston retaining	65261	2
3	SCREW- Tapping pan (VI Super 2SL only)	93932	2	21	SEAL	94638	2
4	PLATE- Retaining (VI Super 2SL only)	70724	1	22	SPACER- Seal	69407	2
5	SCREW- Pan hd., 6-32 x 3/8	80571	3	23	BEARING- Needle	12530	2
6	COVER- Oil pump	69224-1C	1	24	WASHER- Thrust	69093-A	2
7	SPRING- Oil pump	69447	1	25	CRANKSHAFT- (Solid State)	A-94712	1
8	GASKET- Oil pump	69244-1	2		CRANKSHAFT- (Point ignition)	A-70352	1
9	PLUNGER- Oil pump	A-12356-B	1	26	KEY- Magneto (see insert)	69250	1
10	BODY- Oil pump	69343-1	1	27	SCREW- Adjusting fil. hd. 8-32 x 1	80220-2	1
11	BALL- Check valve	60051	1	28	PIN- Adjusting	69254-1A	1
12	SPRING- Check valve	68570	1	29	GASKET- Intake manifold	69143	1
13	FITTING- Oil line	70204	2	30	MANIFOLD- Intake	A-69373-A	1
14	FITTING- Tube	69833	2	31	GASKET- Carburetor	65016	1
				32	CARBURETOR- HDC-58	A-94650	1
				33	CUP- Air filter	70557	1
				34	WASHER- Lock #10	83006-1	2
				35	SCREW- Hex hd. (10-32 x 2 1/4)	80481	2
				36	ELEMENT- Air filter	70566	1
				37	RETAINER- Air filter	70556	1

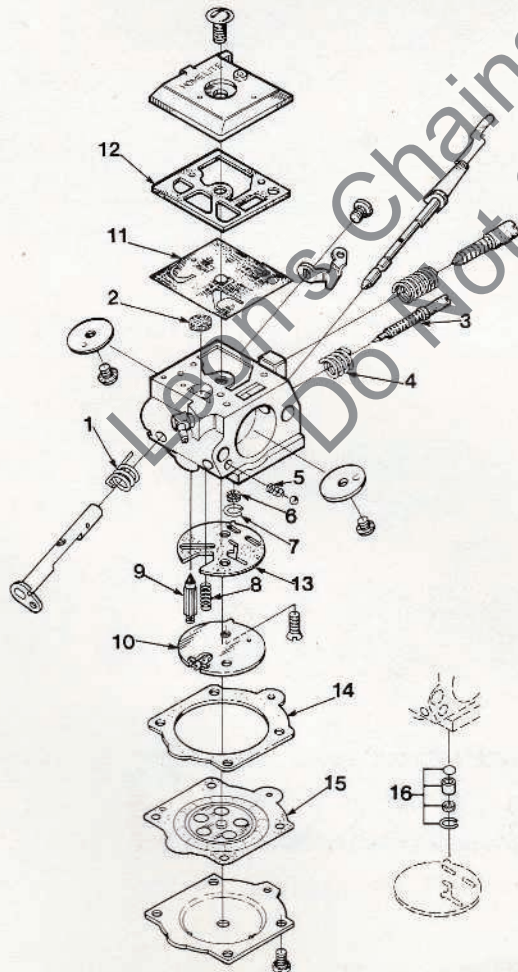
Super 2, VI Super 2 SL

FIGURE 4

VI SUPER 2 SL CHAINBRAKE & HAND GUARD



No.	Description	Part No.	Qty.
1	SCREW- Hex head w/washer 8-32 x 3/8	88026	2
2	CLIP- Retaining	70732	1
3	NUT- Hex (3/8 - 24)	81192	1
	POWERHEAD (see figure 3 for breakdown).		
4	POST- Chain brake	70636	1
5	BAND- Brake	70637	1
6	SCREW- Hex (10-24 x 1/2) w/washer	88049	1
7	CHAIN- Stop	93649	1
8	SCREW- (8-32 x .500)	88042	2
9	HAND GUARD	A-94600	1
10	WASHER- Flat	70632	1
11	SCREW- (10-32 x 1/2)	82166	1
12	PIN- Roll (3/16 x 9/16)	93069	1
13	PIN- Spring (18 x 1/4)	57721	1
14	PIVOT- Link	A-70767	1



CARBURETOR

A-94650

HDC-58

- 94061-A REPAIR KIT (Includes: 1-15)
- 70655 GASKET/DIAPHRAGM KIT (Includes: 11-15)
- 93910 CHECK VALVE REPAIR KIT (#16)
- 94057 CIRCUIT PLATE- High altitude .029 (Not shown)