

parts list

VI SUPER 2

VI SUPER 2SL

PART NO. 17068
Printed First Edition
in U.S.A.
Price .35¢



HOMELITE®

VI Super 2

VI Super 2SL

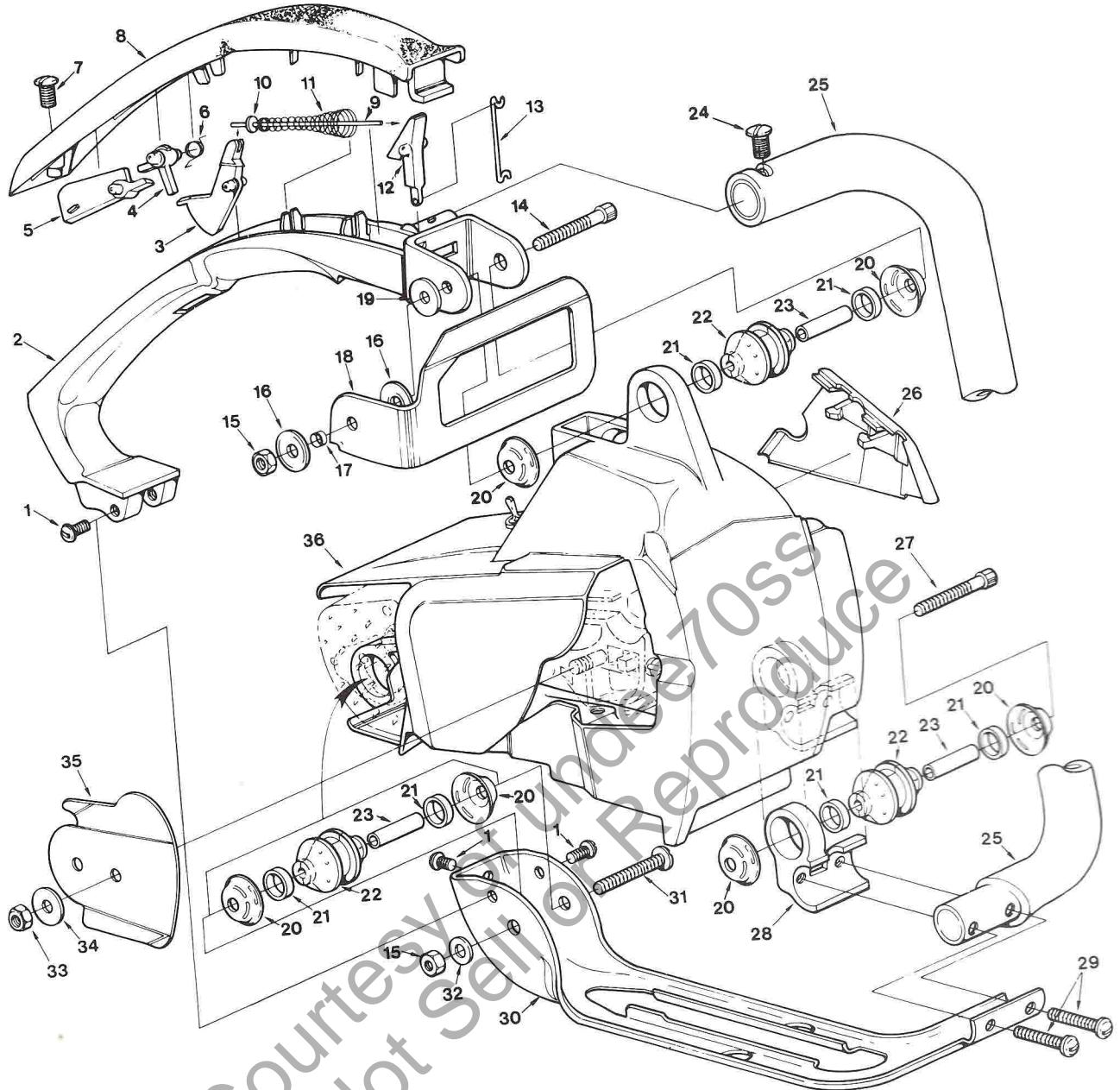
CHAIN SAWS

HOMELITE **TEXTRON**

Homelite Division of Textron Inc.

VI SUPER 2, VI SUPER 2 SL

FIGURE 1

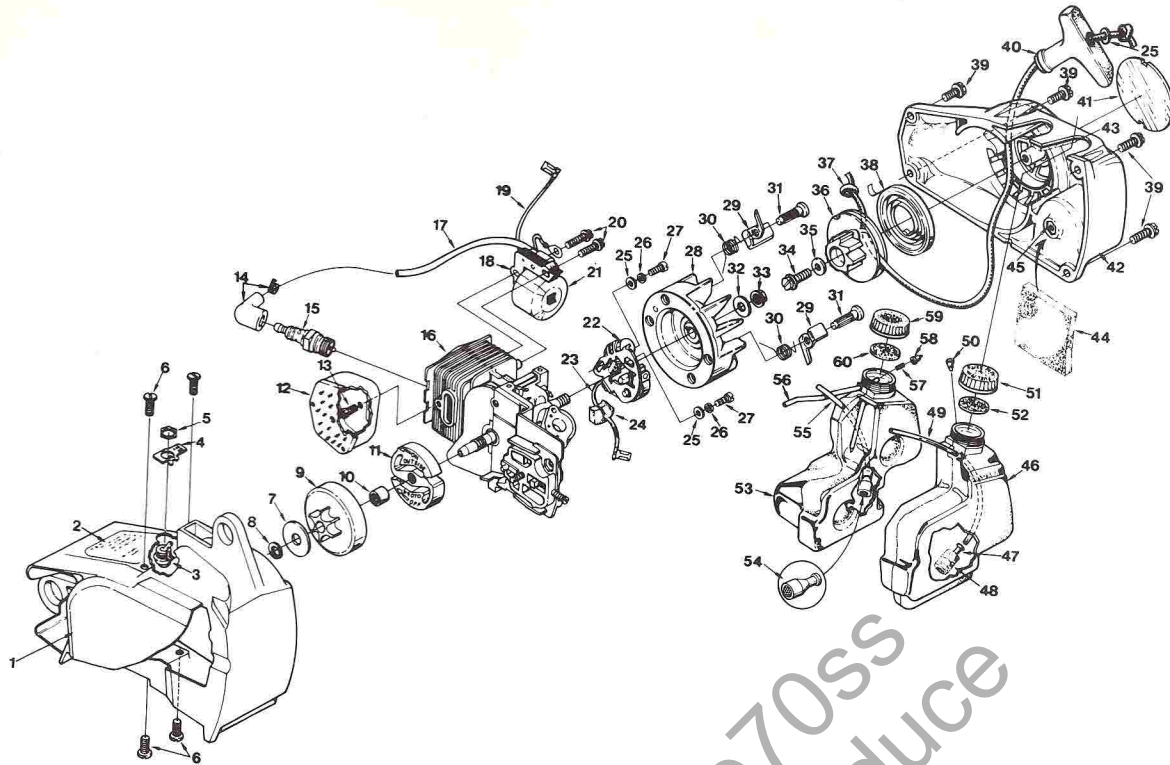


| No. | Description | Part No. | Qty. | No. | Description | Part No. | Qty. |
|-----|---|----------|------|-----|--|----------|------|
| 1 | SCREW—Pan hd. (8-32 x 5/8) | 80577-2 | 3 | 21 | RING—Isolator | 70432 | 6 |
| 2 | HANDLE—Throttle | 70568-2 | 1 | 22 | ISOLATOR—Vibration | 70485-A | 3 |
| 3 | TRIGGER— | 70619 | 1 | 23 | SPACER—Isolator | 70433 | 3 |
| 4 | STOP—Throttle safety | 70593 | 1 | 24 | SCREW—Pan washer hd. (10-32 x 5/8) | 82239 | 1 |
| 5 | LEVER—Throttle safety | 70594 | 1 | 25 | HANDLE BAR | A-70604 | 1 |
| 6 | SPRING—Torsion | 70591 | 1 | 26 | COVER—Air filter | 70571 | 1 |
| 7 | SCREW—Pan hd. (#10-32 x 5/8) | 82239 | 1 | 27 | SCREW—Cap Hex Soc. (10-32 x 1 3/4) | 82310 | 1 |
| 8 | COVER—Handle | 70626 | 1 | 28 | BRACKET—Isolator mtg. | 70558-2 | 1 |
| 9 | ROD—Throttle Includes: WASHER—Flat #4 | A-70614 | 1 | 29 | SCREW—Hex hd. (10-32 x 1 3/16) | 80841 | 2 |
| 10 | WASHER—Flat #4 | 84011 | 1 | 30 | BRACE—Handle | 70554-1 | 1 |
| 11 | SPRING—Throttle rod | 69249 | 1 | 31 | SCREW—Pan hd. (10-32 x 1 3/4) | 82317 | 1 |
| 12 | LEVER—Throttle | 69107 | 1 | 32 | WASHER—Flat (10) | 84008 | 1 |
| 13 | ROD—Throttle | 70612 | 1 | 33 | NUT—Guide bar (1/4-28) | 81065-2 | 1 |
| 14 | SCREW—Cap Hex Soc. hd. (10-32 x 2") SCREW—Cap Hex Soc. hd. (10-32 x 1 3/4") | †82321 | 1 | 34 | WASHER—Flat | 69309-1 | 1 |
| 15 | NUT—Hex (10-32) | 81206 | 2 | 35 | PLATE—Guide bar | 69360 | 1 |
| 16 | WASHER—Belleville | †70728 | 2 | 36 | HOUSING—Engine (see fig. 2 for breakdown) | A-70662 | 1 |
| 17 | SPACER—Hand guard | †70748 | 1 | | | | |
| 18 | GUARD—Hand | †70802-1 | 1 | | | | |
| 19 | WASHER—Flat | 70632 | 1 | | | | |
| 20 | WASHER—Isolator | 70440-A | 6 | | | | |

† VI Super 2 only
‡ VI Super 2 SL only

VI SUPER 2, VI SUPER 2 SL

FIGURE 2



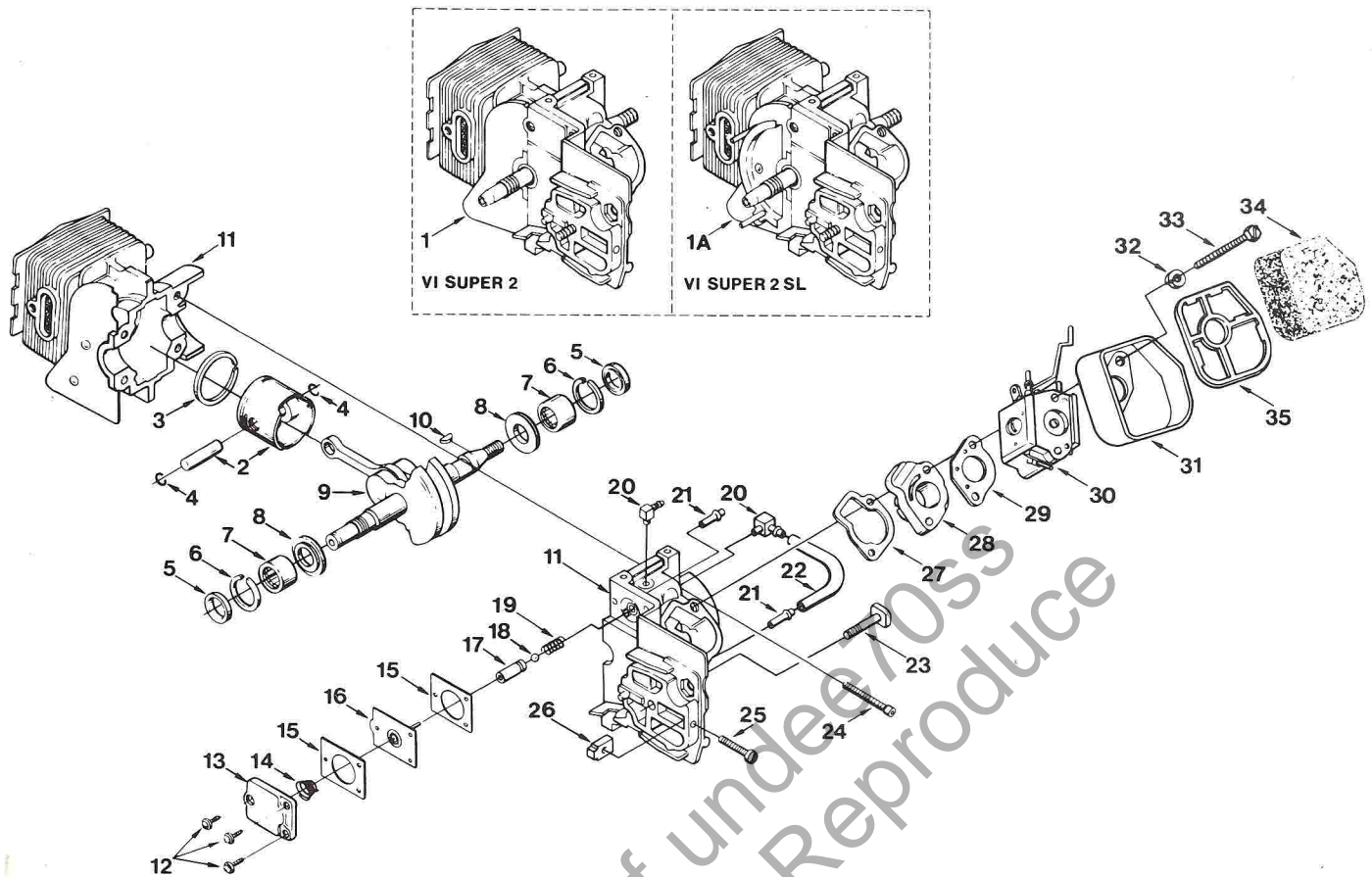
| No. | Description | Part No. | Qty. | No. | Description | Part No. | Qty. |
|-----|---|-----------|------|-----|--|----------|------|
| 1 | HOUSING—Engine | A-70662 | 1 | 38 | SPRING—Rewind | 69217 | 1 |
| | Includes: | | | 39 | SCREW—Hex washer hd. (10-32 x 3/8) | 80572 | 4 |
| 2 | PLATE—Instructions | 70511 | 1 | 40 | GRIP—Starter rope | 70211 | 1 |
| 3 | SWITCH—Stop (grounding) | A-63938 | 1 | 41 | DECAL | 70800 | 1 |
| | Includes: | | | 42 | HOUSING—Rewind starter | A-70663 | 1 |
| 4 | PLATE—"On-Off" | 63910 | 1 | | Includes: | | |
| 5 | NUT—Hex | 72084-A1 | 1 | 43 | FILTER—Fuel tank valve | 69443 | 2 |
| 6 | SCREW—Pan hd. (10-24 x 1/2) | 82216 | 4 | 44 | FILTER (may be required in some units) | 38472 | 1 |
| 7 | WASHER—Thrust (clutch) | 69138 | 1 | 45 | NUT—Centerlocking Hex (#10-32) | 81206 | 1 |
| 8 | RING—Retaining | 69743 | 1 | 46 | TANK—Fuel | A-70582 | 1 |
| 9 | SPROCKET & DRUM—6 tooth (see note 1) | A-70221-A | 1 | | Includes: | | |
| | Includes: | | | 47 | FILTER—Fuel | A-69923 | 1 |
| 10 | BEARING—Clutch | 69318-1 | 1 | | Includes: | | |
| 11 | KIT—Clutch (see note 1) | A-70351 | 1 | 48 | ELEMENT—Felt | 64083 | 1 |
| 12 | MUFFLER | A-69253-1 | 1 | 49 | TUBING—Rubber | 70310-29 | 1 |
| 13 | SCREW—Soc. hd. (10-24 x 1/2) | 82245 | 1 | 50 | VALVE CHECK—Duck bill | 69451 | 1 |
| 14 | TERMINAL—Spark plug | A-33055 | 1 | 51 | CAP—Fuel (red) | A-70894 | 1 |
| 15 | SPARK PLUG—Champion DJ-7J | 68616-S | 1 | | Includes: | | |
| 16 | CYLINDER & CRANKCASE (see Fig. 3 for breakdown) | A-70226 | 1 | 52 | GASKET—Filler cap | 70826 | 1 |
| 17 | LEAD—High tension | 69326 | 1 | 53 | TANK—Oil | A-70583 | 1 |
| 18 | CORE—Coil | 69324 | 1 | | Includes: | | |
| 19 | LEAD—Stop switch | 69321 | 1 | 54 | FILTER—Oil | A-68593 | 1 |
| 20 | SCREW—Hex w/washer (8-32 x 3/4) | 82248 | 2 | 55 | TUBING—Rubber | 70309-24 | 1 |
| 21 | COIL—Ignition | 69323 | 1 | 56 | LINE—Pressure | A-69358 | 1 |
| | RETAINER—Coil (not shown) | 69325 | 1 | | Includes: | | |
| 22 | POINT SET—Breaker | A-69336 | 1 | 57 | CONNECTOR—Oil line | 69659-1 | 1 |
| | Includes: | | | 58 | VALVE CHECK—Duck bill | 69451 | 1 |
| 23 | LEAD—Electrical | 70249 | 1 | 59 | CAP—Tank oil | A-70893 | 1 |
| 24 | SEAL—Lead | 69247 | 1 | | Includes: | | |
| 25 | WASHER—Flat | 84025-1 | 3 | 60 | GASKET—Fuel filler cap | 70826 | 1 |
| 26 | WASHER—Lock | 83060 | 2 | | | | |
| 27 | SCREW—Fil. hd. (#6-32 x 3/8) | 82241 | 2 | | | | |
| 28 | ROTOR & STARTER PAWL | A-69297-A | 1 | | | | |
| | Includes: | | | | | | |
| 29 | PAWL—Starter | A-70285-A | 2 | | | | |
| | Includes: | | | | | | |
| 30 | SPRING—Starter Pawl | 69139 | 2 | | | | |
| 31 | PIN—Starter Pawl (see note 2) | 70216 | 2 | | | | |
| 32 | WASHER—Flat | 69145 | 1 | | | | |
| 33 | NUT—Rotor (5/16-24) | 81229 | 1 | | | | |
| 34 | SCREW—(10-32 x 3/8) | 80704 | 1 | | | | |
| 35 | WASHER—Flat | 63606 | 1 | | | | |
| 36 | PULLEY—Starter | 69158 | 1 | | | | |
| 37 | ROPE—Starter (#4, 30" long) | 69311 | 1 | | | | |

Note 1: Snap Ring item #8, must never be reused once it has been removed. Item #8 is included with both item #9 and item #11.

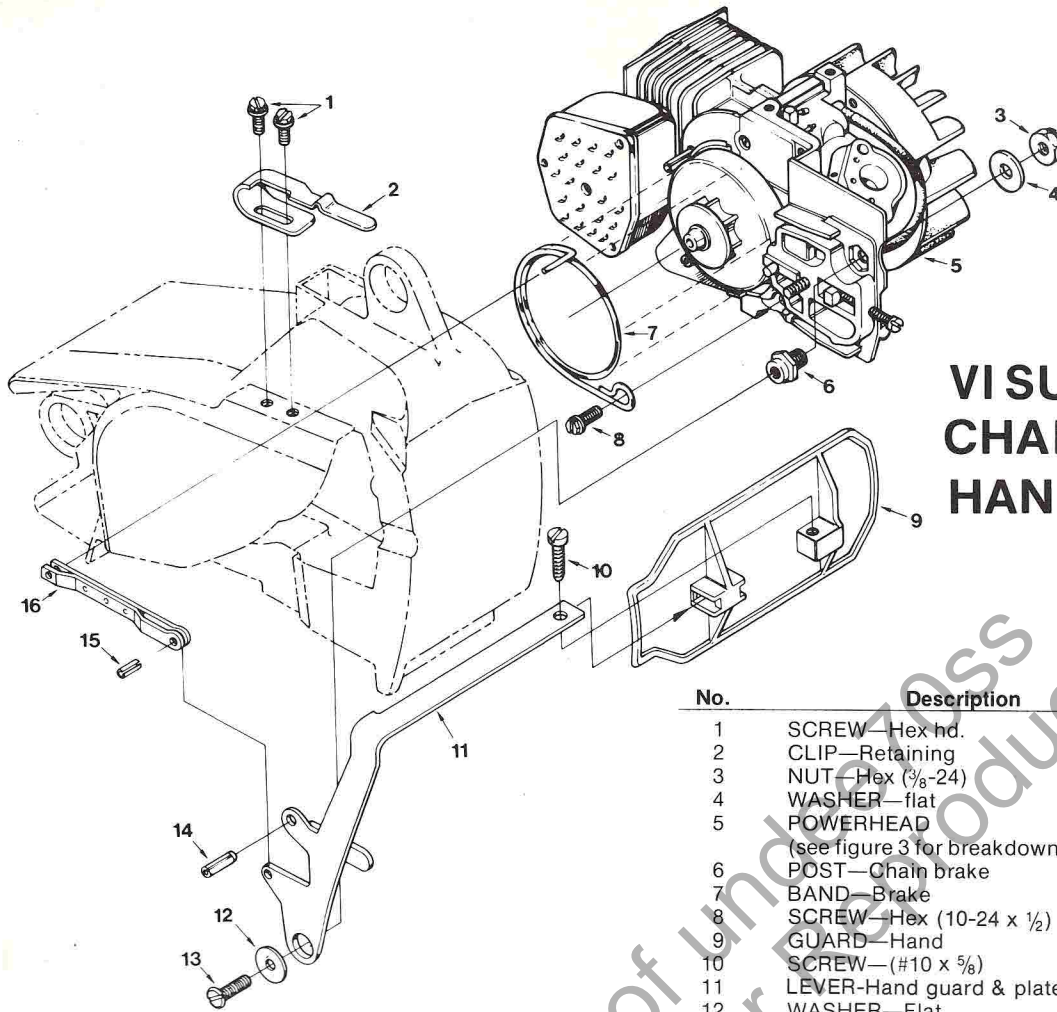
Note 2: Replacement Starter Pawl Pin, item #31 is oversize. Paint, stamp or mark to identify oversize pins when installing. Oversize pin can be installed tightly only one time. If oversize pin is removed, the entire rotor assembly must be replaced.

VI SUPER 2 VI SUPER 2 SL

FIGURE 3



| No. | Description | Part No. | Qty. | No. | Description | Part No. | Qty. |
|-----|-----------------------------|----------|------|-----|-------------------------------------|-----------|------|
| 1 | SHORT BLOCK (VI Super 2) | A-70225 | 1 | 15 | GASKET—Oil pump | 69244 | 2 |
| 1A | SHORT BLOCK (VI Super 2 SL) | A-70836 | 1 | 16 | PLUNGER—Oil pump | A-12356-A | 1 |
| | Includes: | | | 17 | BODY—Oil pump | 69343 | 1 |
| 2 | PISTON & PIN | A-70224 | 1 | 18 | BALL—Check valve | 60051 | 1 |
| | Includes: | | | 19 | SPRING—Check valve | 68570 | 1 |
| 3 | PISTON RING | 70205 | 1 | 20 | FITTING—Oil line | 70204 | 2 |
| 4 | RING—Piston pin retaining | 65261 | 2 | 21 | FITTING—Tube | 69833 | 2 |
| 5 | SEAL | 68519 | 2 | 22 | LINE—Oil | 70161 | 1 |
| 6 | SPACER—Seal | 69407 | 2 | 23 | BOLT—Guide bar | 69195 | 1 |
| 7 | BEARING—Needle | 12530 | 2 | 24 | SCREW—Sems hex. (8-32 x 1) | 88021 | 4 |
| 8 | BEARING—Roller (optional) | 68513 | 2 | 25 | SCREW—Adjusting fil. hd. (8-32 x 1) | 80220-2 | 1 |
| 9 | CRANKSHAFT | A-70352 | 1 | 26 | PIN—Adjusting | 69254-1A | 1 |
| 10 | KEY—Magneto | 69250 | 1 | 27 | GASKET—Intake manifold | 69143 | 1 |
| 11 | CYLINDER & CRANKCASE | | | 28 | MANIFOLD—Intake | A-69373 | 1 |
| | (VI Super 2) | A-70226 | 1 | 29 | GASKET—Carburetor | 65016 | 1 |
| | (VI Super 2 SL) | A-70837 | 1 | 30 | CARBURETOR—HDC 41 | A-70797 | 1 |
| | Includes: | | | 31 | CUP—Air filter | 70557 | 1 |
| 12 | SCREW—Pan hd. (6-32 x 3/8) | 80571 | 3 | 32 | WASHER—Lock #10 | 83006-1 | 2 |
| 13 | COVER—Oil pump | 69224-1C | 1 | 33 | SCREW—Hex hd. (10-32 x 2 1/4) | 80481 | 2 |
| 14 | SPRING—Oil pump | 69447 | 1 | 34 | ELEMENT—Air filter | 70566 | 1 |
| | | | | 35 | RETAINER—Air filter | 70556 | 1 |



**VI SUPER 2 SL
CHAIN BRAKE &
HAND GUARD**

| No. | Description | Part No. | Qty. |
|-----|---|-----------|------|
| 1 | SCREW—Hex hd. | 88026 | 2 |
| 2 | CLIP—Retaining | 70732 | 1 |
| 3 | NUT—Hex (3/8-24) | 81192 | 1 |
| 4 | WASHER—flat | 69478 | 1 |
| 5 | POWERHEAD (see figure 3 for breakdown) | — | — |
| 6 | POST—Chain brake | 70636 | 1 |
| 7 | BAND—Brake | 70637 | 1 |
| 8 | SCREW—Hex (10-24 x 1/2) w/washer | 88024 | 1 |
| 9 | GUARD—Hand | 70646 | 1 |
| 10 | SCREW—(#10 x 5/8) | 82312 | 1 |
| 11 | LEVER—Hand guard & plate | A-70949-1 | 1 |
| 12 | WASHER—Flat | 70632 | 1 |
| 13 | SCREW—(10-32 x 1/2) | 82166 | 1 |
| 14 | PIN—Roll (3/16 x 9/16) | 70762 | 1 |
| 15 | PIN—Spring (1/8 x 1/4) | 63579 | 1 |
| 16 | PIVOT—Link | A-70767 | 1 |

VI SUPER 2 & VI SUPER 2 SL

ACCESSORIES

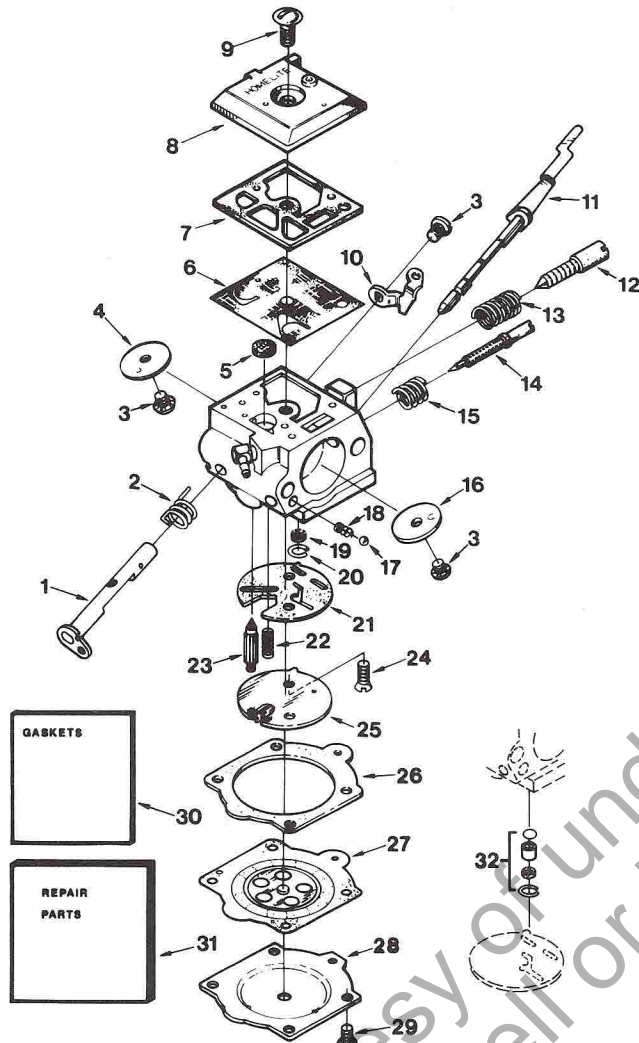
| | |
|-----------------------------------|---------|
| FILTER—Air | A-24799 |
| Includes: | |
| FILTER—Air(2) | 69141 |
| GASKET—Oil pump body | 69596 |
| KIT—Spark arrestor | A-69586 |
| Includes: | |
| SCREW—Self tapping (#6 x 1/4) (3) | 80328 |
| PAINT—Red 12 oz. spray can | 23475 |
| PAINT—Black 12 oz. spray can | 22772 |
| KIT—Hand guard | A-70796 |
| Includes: | |
| SCREW—(10-24 x 1/2) | 82216 |
| WASHER—Belleville (2) | 70728 |
| SPACER— | 70748 |
| ROPE—Starter #4 (250 ft.) | 68848 |
| SAFE-T-TIP™ (Pat. Pending) | A-70776 |
| (VI Super 2, standard equipment) | |
| (VI Super 2 SL, accessory) | |
| Includes: | |
| SCREW— | 88027-1 |

| | |
|------------------------|----------|
| TUBING—Rubber (10 ft.) | 70309-99 |
| TUBING—Rubber (10 ft.) | 70310-99 |

TOOLS

| | |
|--|-----------|
| PULLER—Magneto rotor | A-24747-A |
| Includes: | |
| BOLT—5/16-18 x 1 3/4 | 80288 |
| NUT—Hex, 5/16-18 (2) | 81196 |
| WRENCH—Hex soc. 5/32 (for 10-24 screw) | 22126 |
| WRENCH—Hex soc. 9/64 (for 8-32 screw) | 23528 |
| WRENCH—Spanner | A-23696-A |
| Includes: | |
| Pin | 23717-A |
| WRENCH—Flat (for guide bar nut) | 24814 |
| DRIVER—Check valve (for HDC-41 Carb.) | 24972 |

VI SUPER 2 VI SUPER 2 SL CARBURETOR



A-70797-A HDC-41

| No. | Description | Part No. | Qty. | No. | Description | Part No. | Qty. |
|-----|-------------------------------|----------|------|-----|------------------------------------|----------|------|
| 1 | SHAFT—Throttle | 68636 | 1 | 23 | NEEDLE—Inlet | +64229 | 1 |
| 2 | SPRING—Throttle | +69430 | 1 | 24 | SCREW—Circuit plate | 67375 | 2 |
| 3 | SCREW—Valve | 67372 | 3 | 25 | PLATE—Circuit w/metering lever | 93196 | 1 |
| 4 | VALVE—Throttle | 69961 | 1 | 26 | GASKET—Metering diaphragm | +64231 | 1 |
| 5 | SCREEN—Fuel inlet | +64243 | 1 | 27 | DIAPHRAGM—Metering | +67371 | 1 |
| 6 | DIAPHRAGM—Fuel pump | +67370 | 1 | 28 | COVER—Metering diaphragm | 64224 | 1 |
| 7 | GASKET—Fuel pump | +67368 | 1 | 29 | SCREW—Metering cover | 64689 | 4 |
| 8 | COVER—Fuel pump | 67361 | 1 | 30 | GASKET SET | 67369-A | |
| 9 | SCREW—Fuel pump cover | 67374 | 1 | 31 | REPAIR KIT | 93198 | |
| 10 | STOP—Throttle | 70342 | 1 | 32 | KIT—Check valve repair (accessory) | 65386 | |
| 11 | SHAFT—Choke | 70697 | 1 | | Includes: | | |
| 12 | SCREW—Idle adjustment | 70695 | 1 | | SCREEN—Check valve | 67381 | 2 |
| 13 | SPRING—Idle adjustment needle | 12199 | 1 | | KIT—Kwik | 93214 | |
| 14 | NEEDLE—Adjustment | +70657 | 1 | | KIT—Gasket/diaphragm | +70655 | |
| 15 | SPRING—Adjustment needle | +67377 | 1 | | + Contents of Repair Kit | | |
| 16 | VALVE—Choke | 69428 | 1 | | + Contents of Gasket/Diaphragm Kit | | |
| 17 | BALL—Check valve | +60051 | 1 | | | | |
| 18 | SPRING—Choke friction | +64238 | 1 | | | | |
| 19 | SCREEN—Check valve | +67381 | 1 | | | | |
| 20 | RING—Screen retaining | 67360 | 1 | | | | |
| 21 | GASKET—Circuit | +67367-A | 1 | | | | |
| 22 | SPRING—Metering lever | +67378 | 1 | | | | |

REPLACEMENT CARBURETOR (NEW) FOR
MODEL VI SUPER 2, VI SUPER 2 SL

All parts interchangeable with original equipment carburetor except for Item #25 circuit plate which now has the inlet lever attached to it.

Numerical Parts List

| Part No. | Description | Qty. | Part No. | Description | Qty. | Part No. | Description | Qty. | Part No. | Description | Qty. |
|-----------|--------------|------|-----------|-----------------|------|-----------|-----------------|------|------------------------|-----------------|------|
| 12356-A | Plunger | | 69158 | Pulley | 1 | 70331 | Plate | 1 | FASTENING PARTS | | |
| 12199 | Spring | 1 | 69195 | Bolt | 1 | 70342 | Stop | 1 | 63606 | Washer | 1 |
| 12530 | Bearing | 2 | 69217 | Spring | 1 | A-70351 | Kit | 1 | 64689 | Screw-metering | 4 |
| 22126 | Wrench | 1 | 69224-1C | Cover | 1 | 70352 | Crankshaft | 1 | 67372 | Screw-valve | 3 |
| 22772 | Paint | 1 | 69244 | Gasket | 2 | 70432 | Ring | 6 | 67374 | Screw-fuel pump | 1 |
| 23475 | Paint | 1 | 69247 | Seal | 1 | 70433 | Spacer | 3 | 67375 | Screw-circuit | 1 |
| 23528 | Wrench | 1 | 69249 | Spring | 1 | 70440-A | Washer-Isolator | 6 | | plate | 2 |
| A-23696-A | Wrench | 1 | 69250 | Key | 1 | 70485-A | Isolator | 3 | 69093-A | Washer | 2 |
| 23717-A | Pin | 2 | A-69253-1 | Muffler | 1 | 70511 | Plate | 1 | 69138 | Washer | 1 |
| A-24747-A | Puller | 1 | 69254-1A | Pin | 1 | 70554-1 | Brace | 1 | 69145 | Washer | 1 |
| A-24779 | Filter | 1 | A-69297-A | Rotor & Starter | 1 | 70556 | Retainer | 1 | 69303-1 | Washer | 1 |
| 24814 | Wrench | 1 | 69311 | Rope #4 | 1 | 70557 | Cup | 1 | 69478 | Washer | 1 |
| 24972 | Driver | 1 | 69318-1 | Bearing | 1 | 70558-2 | Bracket | 1 | 70632 | Washer | 1 |
| A-33055 | Terminal | 1 | 69321 | Lead | 1 | 70566 | Element | 1 | 70695 | Screw | 1 |
| 38472 | Filter | 1 | 69323 | Coil | 1 | 70568-2 | Handle | 1 | 70728 | Washer | 2 |
| 60051 | Ball | 2 | 69324 | Core | 1 | 70571 | Cover | 1 | 72084-A1 | Nut | 1 |
| 63579 | Pin | 1 | 69325 | Retainer | 1 | A-70582 | Tank-Fuel | 1 | 80220-2 | 8-32 x 1 | 1 |
| 63606 | Washer | 1 | 69326 | Lead | 1 | A-70583 | Tank-Oil | 1 | 80288 | Bolt | 1 |
| 63910 | Plate | 1 | A-69336 | Point Set | 1 | 70591 | Spring | 1 | 80328 | 6 x 1/4 | 3 |
| A-63938 | Switch | 1 | 69343 | Body | 1 | 70593 | Stop | 1 | 80481 | 10-32 x 2-1/4 | 2 |
| 64083 | Element | 1 | A-69358 | Line | 1 | 70594 | Lever | 1 | 80571 | 6-32 x 3/8 | 3 |
| 64224 | Cover | 1 | 69360 | Plate | 1 | A-70604 | Handle bar | 1 | 80572 | 10-32 x 5/8 | 4 |
| 64229 | Needle | 1 | A-69373 | Manifold | 1 | 70612 | Rod | 1 | 80577-2 | 8-32 x 3/8 | 3 |
| 64231 | Gasket | 1 | 69407 | Spacer | 2 | A-70614 | Rod | 1 | 80704 | 10-32 x 3/8 | 5 |
| 64238 | Spring | 1 | 69428 | Valve | 1 | 70619 | Trigger | 1 | 80841 | 10-32 x 1 3/16 | 2 |
| 64243 | Screen | 1 | 69430 | Spring | 1 | 70626 | Cover-Handle | 1 | 81065-2 | Nut | 1 |
| 65016 | Gasket | 1 | 69443 | Filter | 1 | 70636 | Post | 1 | 81192 | Nut | 1 |
| 65261 | Ring | 2 | 69447 | Spring | 1 | 70637 | Band | 1 | 81196 | Nut | 2 |
| 65386 | Kit | 1 | 69451 | Valve Check | 2 | 70646 | Guard-Hand | 1 | 81206 | Nut | 1 |
| 67360 | Ring | 2 | A-69586 | Kit | 1 | 70654 | Kit | 1 | 81229 | Nut | 1 |
| 67361 | Cover | 1 | 69596 | Gasket | 1 | 70655 | Kit | 1 | 82166 | 10-32 x 1/2 | 1 |
| 67367-A | Gasket | 1 | 69659-1 | Connector | 1 | 70657 | Needle | 1 | 82216 | 10-24 x 1/2 | 4 |
| 67368 | Gasket | 1 | 69743 | Ring | 1 | A-70662 | Housing | 1 | 82239 | 10-32 x 5/8 | 2 |
| 67369-A | Gasket Set | 1 | 69833 | Fitting | 2 | A-70663 | Housing | 1 | 82241 | Screw-point set | 2 |
| 67370 | Diaphragm | 1 | A-69923 | Filter | 1 | 70697 | Shaft | 1 | 82245 | 10-24 x 1/2 | 1 |
| 67371 | Diaphragm | 1 | 69961 | Valve | 1 | 70692 | Clip | 1 | 82248 | 8-32 x 3/4 | 2 |
| 67377 | Spring | 1 | 70161 | Line | 1 | 70748 | Spacer | 1 | 82310 | 10-32 x 3/4 | 1 |
| 67378 | Spring | 1 | 70204 | Fitting | 2 | 70762 | Pin | 1 | 82312 | 10 x 5/8 | 1 |
| 67381 | Screen | 3 | 70205 | Piston Ring | 1 | A-70767 | Pivot | 1 | 82317 | 10-32 x 1 3/4 | 1 |
| 67383 | Lever | 1 | 70211 | Grip | 1 | A-70776 | Safe-T-Tip | 1 | 82321 | 10-32 x 2 | 1 |
| 68513 | Bearing | 2 | 70216 | Pin | 2 | A-70796 | Kit | 1 | 83060 | Washer | 2 |
| 68519 | Seal | 2 | A-70221-A | Sprocket & Drum | 1 | A-70797 | Carburetor | 1 | 83006-1 | Washer | 2 |
| 68570 | Spring | 1 | A-70224 | Piston & Pin | 1 | 70800 | Decal | 1 | 84008 | Washer | 1 |
| A-68593 | Filter | 1 | A-70225 | Short Block | 1 | 70802-1 | Guard Hand | 1 | 84011 | Washer | 1 |
| 68616-S | Spark Plug | 1 | A-70226 | Cylinder & | 1 | 70826 | Gasket | 1 | 84025-1 | Washer | 3 |
| 68636 | Shaft | 1 | | Crankcase | 1 | A-70836 | Short Block | 1 | 88021 | 8-32 x 1 | 4 |
| 68848 | Reel-250' #4 | 1 | 70249 | Lead | 1 | A-70837 | Cylinder & | 1 | 88024 | 10-24 x 1/2 | 1 |
| 69107 | Lever | 1 | A-70285-A | Kit | 2 | | Crankcase | 1 | 88026 | Screw | 2 |
| 69138 | Washer | 1 | 70309-24 | Tubing 6" | 1 | 70840 | Repair Kit | 1 | 88027-1 | Screw | 1 |
| 69139 | Spring | 2 | 70309-99 | Tubing 10' | 1 | A-70893 | Cap | 1 | | | |
| 69141 | Filter | 1 | 70310-29 | Tubing 7 1/4" | 1 | A-70894 | Cap | 1 | | | |
| 69143 | Gasket | 1 | 70310-99 | Tubing 10' | 1 | A-70949-1 | Lever | 1 | | | |

Do Not Sell or Reproduce

SPECIFICATIONS

ENGINE

Type: 2-cycle, loop scavenged with Power Boost® combustion chamber

Dry Weight: 9.5 lbs. (4,32 kg.)

Displacement: 1.9 cu. in. (31,2cc)

Bore and Stroke: 17/16" x 13/16" (36,51 mm x 30,16 mm)

Cutting Speed: 6000-10000 rpm

Idle Speed: 2900-3200 rpm

Bearings: Crankshaft, needle. Connecting rod, needle

Connecting Rod: One piece, hardened steel

Starter: Rewind, nylon rope, one piece pulley

Clutch: One piece, hardened steel

Muffler: Softone™ diffuser type

Throttle Control: Single Trigger™ with safety interlock

IGNITION

Ignition System: Conventional breaker point magneto system

Ignition Timing: 27° BTDC

Breaker Point Gap: .015" (0,38mm)

Coil-to-Rotor Gap: .010"- .012" (0,25 mm-0,30 mm)

Spark Plug: Champion DJ-7J

Spark Plug Gap: .025" (0,64 mm)

CHAIN AND GUIDE BAR

Guide Bar: 14" Power Tip® guide bar

Chain: 375 series chain

Chain Oil Capacity: 7.78 U.S. fl. oz. (230cc)

Chain Oil System: Automatic positive displacement piston pump, pressurized tank

Chain Oil Filter: Cleanable screen

CARBURETION AND FUEL

Air Filter: Polyurethane sponge (replace when dirty).

Carburetor Type: HDC 41 w/fuel pump

Intake Valving: Stainless steel reed valve into crankcase

Fuel Tank Capacity: 10. 82 U.S. fl. oz. (320 cc)

Fuel Filter: Felt type, replaceable

Continuous Operating Time per Filling: Up to 15 minutes

GENERAL

Vibration isolated control handles on both models

Trigger safety interlock for improved operator control on both models

Chain Brake: Standard on VI Super 2 SL, not available on VI Super 2

Anti-Kickback Device: SAFE T TIP™ (Pat. Pending) supplied with VI Super 2, optional accessory for VI Super 2 SL, prevents chain saw kickback when properly installed.

HOMELITE **TEXTRON**

Homelite Division of Textron Inc.