

HOMELITE®

CHAIN SAWS

944
955

Leon's Chain Saw Parts & Repair
Do Not Sell or Reproduce

PRICE .35



A **textron** DIVISION, PORT CHESTER, N.Y. 10573

PART NO. 24652

Leon's Chainsaw Parts & Repair
Do Not Sell or Reproduce

VI 944 and VI 955

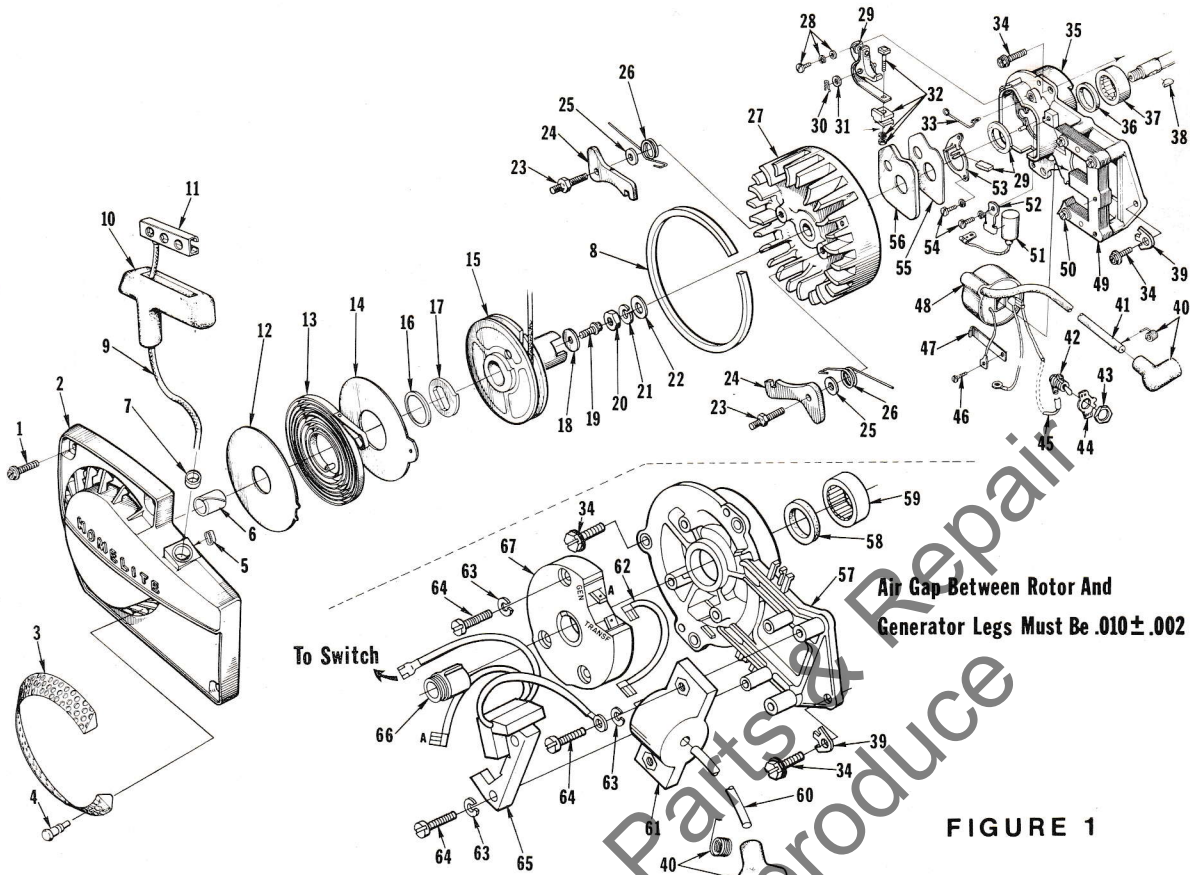


FIGURE 1

No.	Description	Part No.	VI-944	VI-955	Qty.	No.	Description	Part No.	VI-944	VI-955	Qty.
1	SCREW-hex hd., 12-24 x 5/8	80676	x	x	4	34	SCREW-hex hd., 1/4-20 x 5/8	80048	x	x	4
2	HOUSING-starter	A-64504-B	x	x	1	35	PLATE-magneto back	A-68027	x		1
	Includes:						Includes:				
3	SCREEN-fan housing	A-64421	x	x	1	36	SEAL	58688-A	x		1
4	Includes: STUD	67191	x	x	11	37	BEARING-roller	63195	x		1
5	BUSHING-rewind spring	65830	x	x	1	38	KEY-Woodruff	75078	x	x	1
6	BUSHING-starter post	64443	x	x	1	39	WASHER-tab lock	67875-1	x	x	1
7	BUSHING-starter rope	67177	x	x	1	40	TERMINAL-spark plug	A-33055	x	x	1
8	RING-air flow	67409	x	x	1	41	LEAD-high tension	(W) 63632	x		1
9	ROPE-starting	58806	x	x	1	42	SWITCH-toggle	A-67817	x	x	1
10	GRIP-starting rope	58915	x	x	1	43	Includes: NUT	72084-A1	x	x	1
11	INSERT-rope retaining	58847	x	x	1	44	PLATE-indicating "On-Off"	72085-A	x	x	1
12	SHIELD-spring (inner)	63566	x	x	1	45	LEAD-ground	A-59031	x	x	1
13	SPRING-rewind	63268-A	x	x	1	46	SCREW-ground	(W) 64090	x		1
14	SHIELD-spring (outer)	63565-A	x	x	1	47	CLIP-coil retaining	(W) 63726	x		1
15	PULLEY-rewind starter	A-64446	x	x	1	48	COIL-ignition	(W) 63625	x		1
	Includes:					49	CORE-coil	(W) 63630	x		1
16	BUSHING-spring lock	64400	x	x	1	50	SCREW-coil core	(W) 64021	x		4
17	LOCK-rewind spring	64049-A	x	x	1	51	CONDENSER	(W) 63626	x		1
18	WASHER-retaining	58763	x	x	1	52	CLAMP-condenser	(W) 63627	x		1
19	SCREW-hex hd., 10-32 x 1/2	80648	x	x	1	53	RETAINER-felt	(W) 63628	x		1
20	NUT-hex, 3/8-24	81124	x	x	1	54	SCREW-contact plate	(W) 55411	x		3
21	WASHER-lock, 3/8	83102	x	x	1	55	GASKET-breaker box cover	(W) 63316	x		1
22	WASHER-flat, 3/8	84010-1	x	x	1	56	COVER-breaker box	(W) 63317	x		1
23	STUD-shoulder	58757-B	x	x	2	57	PLATE-back	A-67618	x		1
24	PAWL-starter	58756	x	x	2		Includes:				
25	WASHER	83056	x	x	2	58	SEAL	58688	x		1
26	SPRING-starter pawl	58758	x	x	2	59	BEARING-roller	63195	x		1
27	ROTOR-magneto	(W) 63406	x		1	60	LEAD-high tension	(P) 67166	x		1
	ROTOR-magneto	(P) 67165		x	1	61	COIL-transformer	(P) 67164	x		1
28	SCREW-contact plate	(W) 76421	x		1	62	LEAD-transformer	(P) 67167	x		1
29	POINTS-breaker	(W) A-63631	x		1	63	WASHER-lock, #8	83022	x		7
	Includes:					64	SCREW-pan, 8-32 x 3/4	82178	x		7
30	CLIP-post	(W) 28008	x		1	65	COIL-core and generator	(P) 67163	x		1
31	WASHER-point	(W) 28028	x		1	66	CAP-dust	64002	x		1
32	BLOCK-terminal	(W) A-58934	x		1	67	MODULE-ignition	(P) 67162	x		1
33	SPRING-clip cover	(W) 76413	x		1		(W) Wico and (P) Phelon parts are not interchangeable.				

VI 944 and VI 955

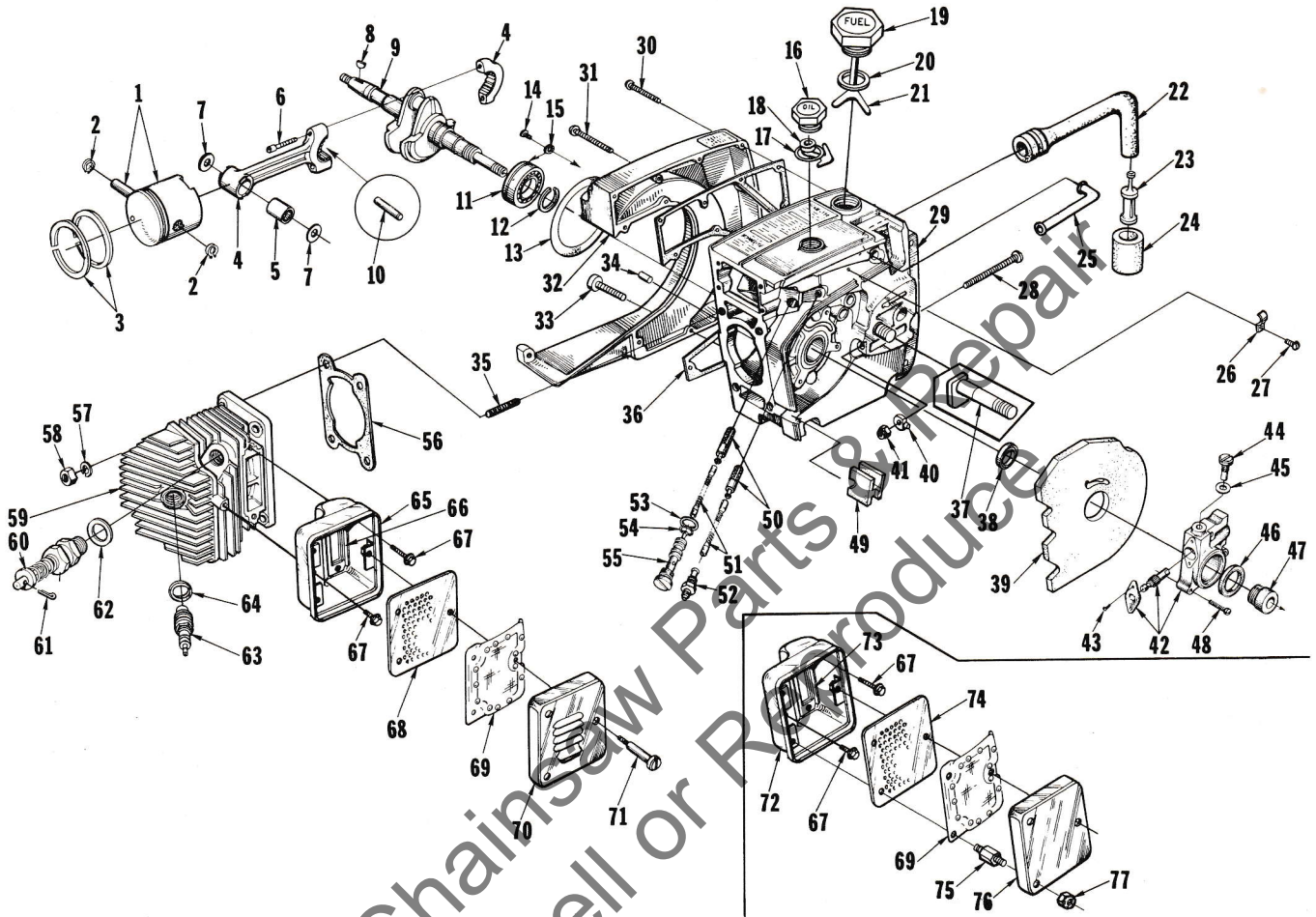


FIGURE 2

VI 944 and VI 955

No.	Description	Part No.	VI-944	VI-955	Qty.	No.	Description	Part No.	VI-944	VI-955	Qty.
1	PISTON & PIN	A-67989-1	x	x	1	40	PIN-guide bar adjusting	67586-1A	x	x	1
	Includes:					41	NUT-flexloc, 1/4-20	81108	x	x	1
2	RING-piston pin retaining	64742	x	x	2	42	PUMP-automatic oil	A-68265	x	x	1
3	PISTON RING	68249	x	x	2		Includes:				
4	ROD-connecting	A-68008	x	x	1	43	SCREW-pan, 4-40 x 1/4	80919	x	x	2
	Includes:					44	SCREW-cam	64102-A	x	x	1
5	BEARING-needle	59351	x	x	1	45	GASKET-cam screw	59736	x	x	1
6	SCREW-soc., 8-32 x 9/16	80805	x	x	2	46	SEAL-felt	59926	x	x	1
7	WASHER-thrust	68010	x	x	2	47	WORM-gear	59675	x	x	1
8	KEY-Woodruff	75078	x	x	1	48	SCREW-fil, 8-32 x 3/4	80248	x	x	3
9	CRANKSHAFT	67168-1	x	x	1	49	GROMMET	65357	x	x	1
10	BEARING-needle (28 rollers)	A-69056	x	x	1	50	FILTER-oil	A-64293	x	x	1
11	BEARING-ball	58190-S	x	x	1	51	LINE-oil pick-up	59000	x	x	1
12	RING-retaining	58319-A	x	x	1	*52	CONNECTOR-oil filter	68308	x	x	1
13	"O" RING	67559	x	x	1	53	GASKET-oil line tube	63751	x	x	1
14	SCREW-bearing retaining	59704	x	x	2	54	"O" RING	58406	x	x	1
15	WASHER-lock	59705	x	x	2	55	TUBE-oil line	63452-A	x	x	1
16	CAP-oil	A-65284-A	x	x	1	56	GASKET-cylinder	63778-1	x	x	1
	Includes:					57	WASHER-lock, 1/4	83009	x	x	4
17	"O" RING	65133	x	x	1	58	NUT-hex, 1/4-28	81065-2	x	x	4
	VALVE-check (not shown)	63718	x	x	1	*59	CYLINDER	A-68980-1	x		1
18	RETAINER	68750	x	x	1		CYLINDER	A-68853-A	x		1
19	CAP-fuel	A-65283-B	x	x	1		Includes:				
	Includes:					60	VALVE-decompression	A-68026	x		1
	VALVE-check (not shown)	63718	x	x	1	61	Includes: PIN-cotter	86329	x		1
*20	GASKET	68961	x	x	1	62	WASHER	67321	x		1
21	RETAINER	68751	x	x	1	63	SPARK PLUG	63547-S	x	x	1
22	LINE-fuel	65593	x	x	1	64	Includes: GASKET	25038	x	x	1
23	FILTER-fuel	A-59251	x	x	1	*65	BODY-muffler	A-68979	x		1
	Includes:					*66	Includes: PLATE-muffler body	68978	x		1
24	FILTER-felt	59253-1	x	x	1	67	SCREW-hex, 1/4-20 x 5/8	80402	x	x	3
25	CONNECTOR-fuel line	67080	x	x	1	68	BAFFLE-muffler	63521-A	x		1
26	CLAMP-fuel line	65597-1	x	x	1	*69	ARRESTOR-spark (for can type muffler)	A-63540-C	x	x	1
27	SCREW-pan, 6-32 x 5/16	80605	x	x	1	70	CAP-muffler	63520-5	x		1
28	SCREW-guide bar adjusting	83367	x	x	1	71	SCREW-shoulder	63855-A	x		3
29	CRANKCASE & TANK	A-68845	x	x	1	*	MUFFLER-complete	A-68983	x		1
	Includes:						Includes:				
30	SCREW-fil, 8-32 x 5/8	82146	x	x	6	*72	BODY-muffler	A-68979	x		1
31	SCREW-fil, 8-32 x 3-3/16	82155	x	x	8	*73	Includes: PLATE-muffler body	68978	x		1
32	COVER	67153-2	x	x	1	74	BAFFLE-muffler	65633	x		1
33	SCREW-fil, 8-32 x 1-3/4	82147	x	x	1	75	STUD-muffler	68874	x		3
34	PIN-dowel	63621	x	x	2	76	CAP-muffler	A-68911-1	x		1
35	STUD	55871	x	x	4	77	NUT-hex, 10-32 flexloc	81109-2	x		3
36	GASKET-fuel tank	67159	x	x	1						
37	BOLT-guide bar	67158	x	x	2						
38	SEAL	58688-A	x	x	1						
39	SHIELD-sawdust	A-64715	x	x	1						

* Denotes new parts

VI 944 and VI 955

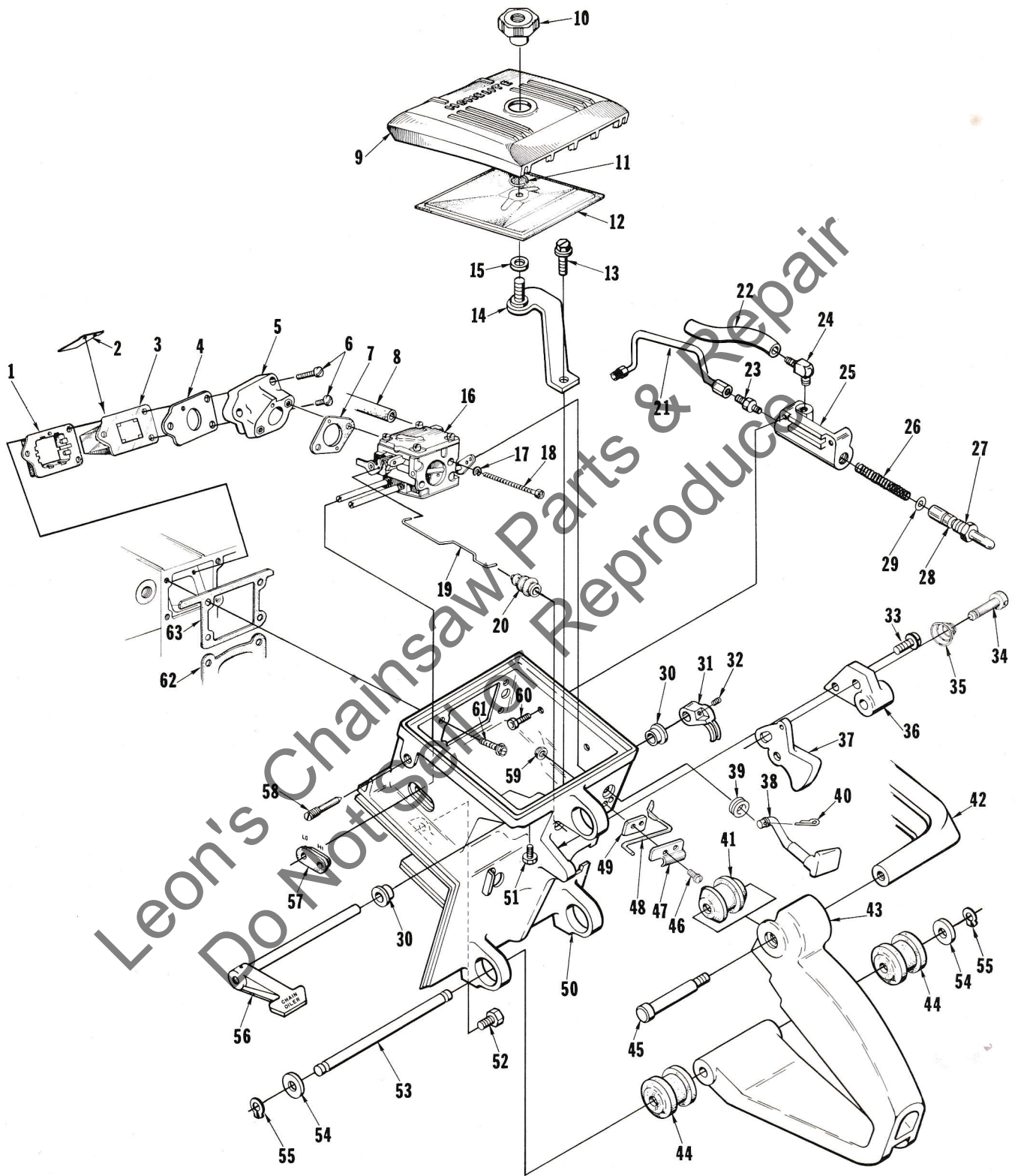


FIGURE 3

VI 944 and VI 955

No.	Description	Part No.	VI-944		Qty.	No.	Description	Part No.	VI-944		Qty.
			VI-944	VI-955					VI-944	VI-955	
1	RETAINER-reed valve	63370-A	x	x	1	32	SCREW-soc.set, 8-32 x 1/4	80989	x	x	1
2	VALVE-reed	63166-A	x	x	4	33	SCREW-pan hd., 8-32 x 3/4	80567	x	x	1
3	SEAT-reed	63371-B	x	x	1	34	PIN-throttle latch	65822	x	x	1
4	GASKET-reed valve seat	65483	x	x	1	35	SPRING-throttle latch	65714	x	x	1
5	MANIFOLD-intake	A-67460-1	x	x	1	*36	COVER-trigger	A-68313	x	x	1
6	SCREW-pan hd., 8-32 x 1-1/8	82196	x	x	3		Includes:				
7	GASKET-carburetor	67540	x	x	1		BUSHING-nylon (not shown)	59064	x	x	1
8	LINE-fuel	65718	x	x	1	37	TRIGGER-throttle	58859	x	x	1
* 9	COVER-air filter element	63634-10	x	x	1	38	ROD-choke	A-68429	x	x	1
10	NUT-cover mounting	A-67639	x	x	1	39	Includes: GROMMET	64862	x	x	1
11	RING-bearing retaining	58319-A	x	x	1	40	PIN-cotter	68324	x	x	1
12	FILTER ELEMENT-air	63341	x	x	1	*41	ISOLATOR-vibration	68321	x	x	1
13	SCREW-hex hd., 12-24 x 1/2	80821	x	x	1	*42	ARM-vibration mount	68922-2	x	x	1
*14	BRACKET-air filter	A-68686	x	x	1	*43	HANDLE-trigger	68302-2	x	x	1
	Includes:					*44	ISOLATOR-vibration	68320	x	x	2
15	GASKET-mounting nut	58392-1	x	x	1	*45	SCREW-shoulder, 5/16 x 1-1/2	68305	x	x	1
16	CARBURETOR-HS-103B	A-68251-A	x	x	1	46	SCREW-pan, 6-32 x 3/8	80571	x	x	2
17	WASHER-lock, #10	83046	x	x	2	47	CLAMP-lever	65821-1	x	x	1
18	SCREW-hex hd., 10-32 x 1-7/8	82179	x	x	2	48	LEVER-poppet valve	65630	x	x	1
19	ROD-throttle	63266-A	x	x	1	49	PLATE-lever	65629-1	x	x	1
20	BOOT-throttle rod	58348	x	x	1	*50	CARBURETOR CHAMBER	A-69128	x	x	1
21	LINE-oil (discharge)	A-63299	x	x	1	51	Includes: BUMPER	56298	x	x	1
	Includes: SLEEVE (not shown)	25301	x	x	2	52	SCREW-hex, 12-24 x 7/8	80891	x	x	1
*22	LINE-oil (intake)	68328	x	x	1	*53	PIN-vibration isolator	68304	x	x	1
23	VALVE-check (outlet)	A-59456-A	x	x	1	54	WASHER-flat	84006-1	x	x	2
	Includes:					*55	RING-retaining	69283	x	x	2
	SPRING (not shown)	59022	x	x	1	56	LEVER-oiler w/shaft	A-63327	x	x	1
	BALL (not shown)	25527	x	x	1		Includes:				
*24	VALVE-check (inlet)	A-68310	x	x	1		PIN-grooved (not shown)	68641	x	x	1
	Includes: BALL (not shown)	25527	x	x	1	57	GROMMET-"Hi-Lo"	58858	x	x	1
25	BODY-oil pump	63344-3	x	x	1	58	SCREW-idle adjustment	63369-A	x	x	1
26	SPRING-compression	59293	x	x	1	59	NUT-lock, 6-32	81126	x	x	2
27	PLUNGER-oil pump	A-57334-14	x	x	1	60	SCREW-pan hd., 8-32 x 1/2	80560	x	x	2
	Includes:					61	SCREW-hax hd., 12-24 x 5/8	80676	x	x	4
28	"O" RING-shaft	59074	x	x	1	62	GASKET-cylinder	63778-1	x	x	1
29	"O" RING-plunger	74388	x	x	1	*63	GASKET-carburetor chamber	63779-C	x	x	1
*30	BEARING-flanged	69160	x	x	2						
31	ARM-oiler	63280-2A	x	x	1						

* Denotes new parts

No.	Description	Part No.	VI-944	VI-955	Qty.	No.	Description	Part No.	VI-944	VI-955	Qty.
1	RETAINER-reed valve	63370-A	x	x	1	32	SCREW-soc. set, 8-32 x 1/4	80989	x	x	1
2	VALVE-reed	63166-A	x	x	4	33	SCREW-pan hd., 8-32 x 3/4	80567	x	x	1
3	SEAT-reed	63371-B	x	x	1	34	PIN-throttle latch	65822	x		1
4	GASKET-reed valve seat	65483	x	x	1		PIN-throttle latch	58924-4	x		1
5	MANIFOLD-intake	A-67460-1	x	x	1	35	SPRING-throttle latch	65714	x		1
6	SCREW-pan hd., 8-32 x 1-1/8	82196	x	x	3		SPRING-throttle latch	58405	x		1
7	GASKET-carburetor	67540	x	x	1	35A	RING-retaining (not shown)	58409	x		1
8	LINE-fuel	65718	x	x	1	*36	COVER-trigger	A-69307	x	x	1
* 9	COVER-air filter element	63634-10	x	x	1		Includes:				
10	NUT-cover mounting	A-67639	x	x	1		BUSHING (not shown)	65878	x		1
11	RING-bearing retaining	58319-A	x	x	1		BUSHING-nylon (not shown)	59064	x		1
12	FILTER ELEMENT-air	63341	x	x	1	37	TRIGGER-throttle	58859	x	x	1
13	SCREW-hex hd., 12-24 x 1/2	80821	x	x	1	38	ROD-choke	A-68429	x	x	1
*14	BRACKET-air filter	A-68686	x	x	1	39	Includes: GROMMET	64862	x	x	1
	Includes:					40	PIN-cotter	86324	x	x	1
15	GASKET-mounting nut	58392-1	x	x	1	*41	ISOLATOR-vibration	68321	x	x	1
16	CARBURETOR-HS-103B	A-68251-A	x	x	1	*42	ARM-vibration mount	68922-2	x	x	1
17	WASHER-lock, #10	83046	x	x	2	*43	HANDLE-trigger	68302-2	x	x	1
18	SCREW-hex hd., 10-32 x 1-7/8	82179	x	x	2	*44	ISOLATOR-vibration	68320	x	x	2
19	ROD-throttle	63286-A	x	x	1	*45	SCREW-shoulder, 5/16 x 1-1/2	68305	x	x	1
20	BOOT-throttle rod	58348	x	x	1	46	SCREW-pan, 6-32 x 3/8	80571	x		2
21	LINE-oil (discharge)	A-63299	x	x	1		SCREW-pan, 6-32 x 5/16	80605	x		2
	Includes: SLEEVE (not shown)	25301	x	x	2	47	CLAMP-lever	65821-1	x		1
*22	LINE-oil (intake)	68328	x	x	1	48	LEVER-poppet valve	65630	x		1
23	VALVE-check (outlet)	A-59456-A	x	x	1	49	PLATE-lever	65629-1	x		1
	Includes:					*50	CARBURETOR CHAMBER	A-69128	x	x	1
	SPRING (not shown)	59022	x	x	1	51	Includes: BUMPER	56298	x	x	1
	BALL (not shown)	25527	x	x	1	52	SCREW-hex, 12-24x 7/8	80891	x	x	1
*24	VALVE-check (inlet)	A-68310	x	x	1	*53	PIN-vibration isolator	68304	x	x	1
	Includes: BALL (not shown)	25527	x	x	1	54	WASHER-flat	84006-1	x	x	2
25	BODY-oil pump	63343-3	x	x	1	*55	RING-retaining	69283	x	x	2
26	SPRING-compression	59293	x	x	1	56	LEVER-oiler w/shaft	A-63327	x	x	1
27	PLUNGER-oil pump	A-57834-14	x	x	1		Includes:				
	Includes:						PIN-grooved (not shown)	68641	x	x	1
28	"O" RING-shaft	59074	x	x	1	57	GROMMET-"Hi-Lo"	58858	x	x	1
29	"O" RING-plunger	74388	x	x	1	58	SCREW-idle adjustment	63369-A	x	x	1
*30	BEARING-flanged	69160	x	x	2	59	NUT-lock, 6-32	81126	x	x	2
31	ARM-oiler	63280-2A	x	x	1	60	SCREW-pan hd., 8-32 x 1/2	80560	x	x	2
						61	SCREW-hex hd., 12-24 x 5/8	80676	x	x	4
						62	GASKET-cylinder	63778-1	x	x	1
						*63	GASKET-carburetor chamber	63779-C	x	x	1

VI 944 and VI 955

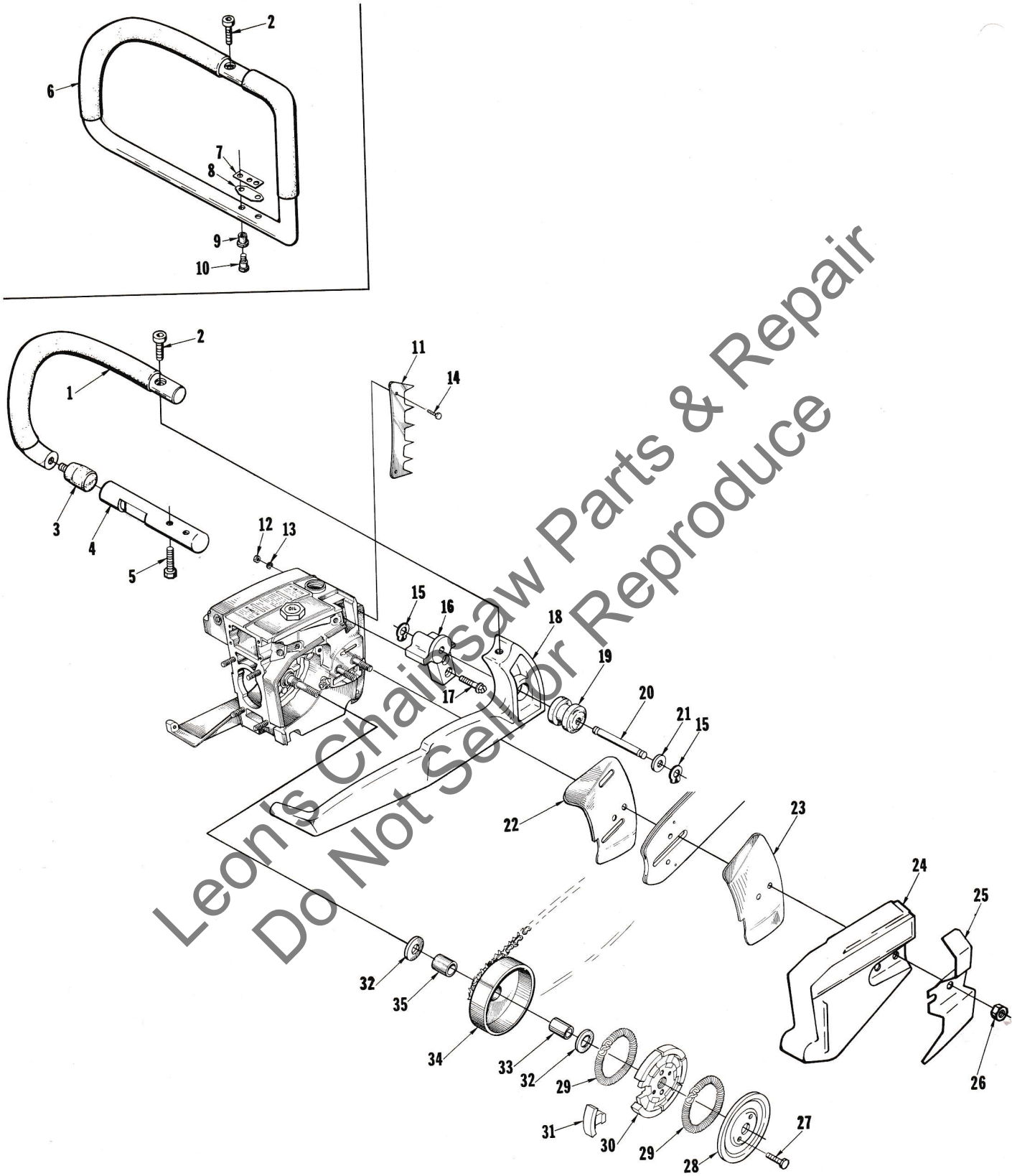


FIGURE 4

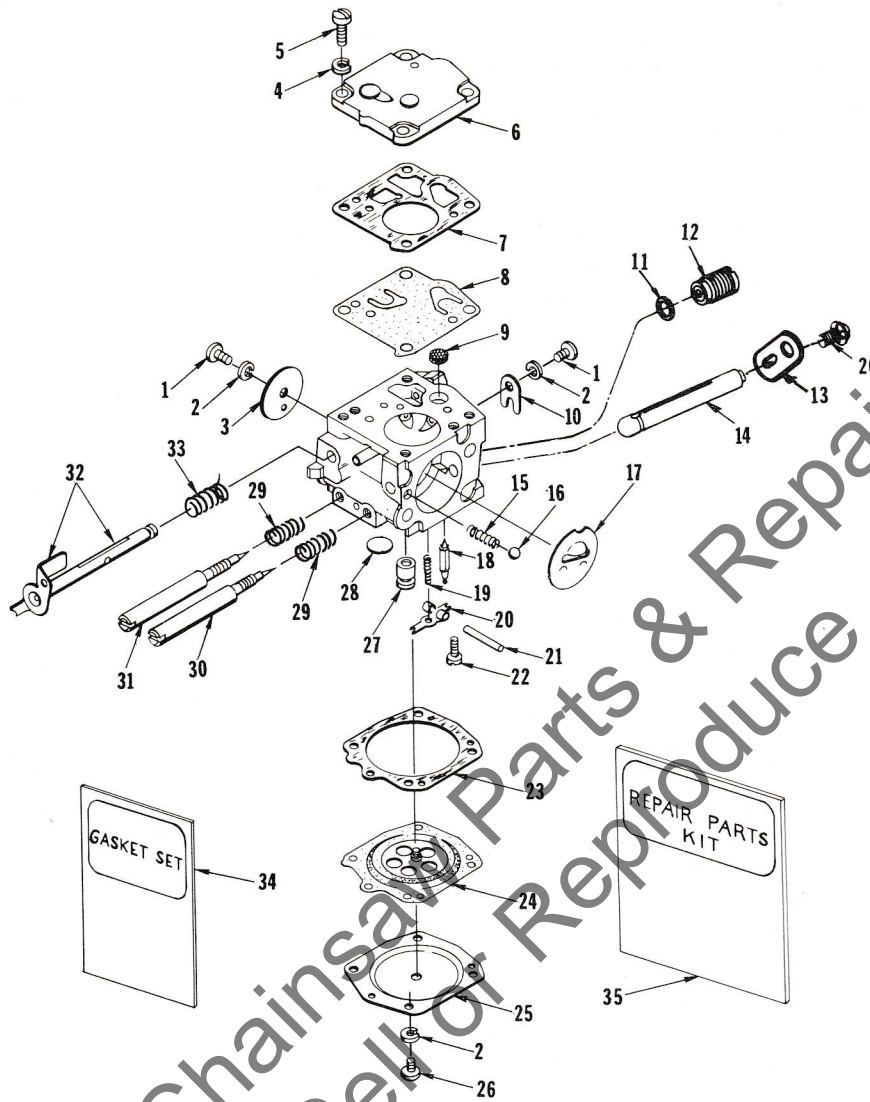
VI 944 and VI 955

No.	Description	Part No.	VI-944	VI-955	Qty.
* 1	HANDLE BAR-flush, (rubber coated)	A-68952-2	x		1
	PIN-spirol, 1/8 x 3/4 (not shown)	66185	x		1
2	SCREW-soc. hd., 1/4-20 x 1	80428	x	x	1
* 3	ISOLATOR-vibration	69176	x		1
* 4	BRACKET-handle bar	68964-1	x		1
5	SCREW-hex hd., 1/4-20 x 1	80284	x		2
* 6	HANDLE BAR-wrap around	A-68685-1		x	1
7	PLATE	65599		x	1
8	SPACER	68765		x	1
9	GROMMET	65518		x	2
10	SCREW-shoulder	65520		x	2
11	KIT-spiked bumper	A-63720	x	x	1
	Includes:				
12	NUT-12-24	81068	x	x	2
13	WASHER-lock, #12	83056	x	x	2
14	SCREW-hex hd., 12-24 x 3/4	80867	x	x	2
*15	RING-retaining	69283	x	x	2
*16	BRACKET-vibration arm	68905-2	x	x	1
17	SCREW-hex washer head	80751	x	x	2
*18	ARM-vibration mount	68922-2	x	x	1
*19	ISOLATOR-vibration	68320	x	x	1
*20	PIN-vibration isolator	68306	x	x	1
21	WASHER-flat	84006-1	x	x	1
22	PLATE-guide bar (inner)	67160	x	x	1
23	PLATE-guide bar (outer)	67161	x	x	1
*24	COVER-drive case	67156-5	x	x	1
25	GUARD-chain	68078-1		x	1
26	NUT-hex, 3/8-16	81089-2	x	x	2
27	SCREW-hex hd., 10-32 x 1/2	80361-1	x	x	2
28	COVER-clutch	58751-1	x	x	1
29	SPRING-clutch	67441	x	x	2
30	SPIDER-clutch	65723-2	x	x	1
31	SHOE-clutch	67896-1	x	x	6
32	WASHER-thrust	63462	x	x	2
33	BEARING-roller	64124	x	x	1
34	DRUM & HUB-rim type	A-65990	x	x	1
	SPROCKET				
	3/8 pitch, 7 tooth (rim type)	63284	x	x	1
	.404 pitch, 7 tooth (rim type)	63285	x	x	1
	SPROCKET & DRUM				
	3/8 pitch, 8 tooth	A-65885	†	†	1
	SPROCKET & DRUM				
	.404 pitch, 7 tooth	A-65886	†	†	1
	SPROCKET & DRUM				
	.404 pitch, 8 tooth	A-65887	†	†	1
	SPROCKET & DRUM				
	3/8 pitch, 7 tooth	A-65884	†	†	1
	WASHER-thrust (See Note)	63463	†	†	1
35	RACE-inner	64129	x	x	1

* Denotes new parts

Note - When using Sprocket and Drum (†) you must use one #63463 Washer (inner).

VI 944 and VI 955



HS-103 B

A 68251-A

No.	Description	Part No.	Qty.	No.	Description	Part No.	Qty.
1	SCREW-rd., 4-40 x 3/16	† 80264	2	19	SPRING-control lever	† 55759	1
2	WASHER-lock, #4	† 83008-1	6	20	LEVER-inlet control	† 59716	1
3	SHUTTER-throttle	67994	1	21	PIN-control lever fulcrum	† 58977	1
4	WASHER-lock, #6	83024	4	22	SCREW-oval, 4-40 x 1/4	† 65798	1
5	SCREW-fil, 6-32 x 3/8	80275	4	23	GASKET-main diaphragm	58978	1
6	COVER-fuel pump diaphragm	58975	1	24	DIAPHRAGM-main control	† 58988	1
7	GASKET-pump diaphragm	58981	1	25	COVER-main diaphragm	58979	1
8	DIAPHRAGM-fuel pump	† 58980-R	1	26	SCREW-rd., 4-40 x 1/4	80591	5
9	SCREEN-fuel inlet	† 58974	1	27	VALVE-check (See Note)	68284	1
10	CLIP-throttle shaft retaining	58982	1	28	PLUG-extension (large)	† 58991	1
11	GASKET	55344	1	29	SPRING-adjustment needle	† 73075	2
12	PLUG-screw	68297	1	30	SCREW-main adjustment	63676	1
13	LEVER-choke	68397	1	31	SCREW-idle adjustment	63677	1
14	SHAFT-choke	65799	1	32	SHAFT-throttle w/lever	A-67995	1
15	SPRING-choke friction	73264	1	33	SPRING-throttle opening	† 59460	1
16	BALL-choke friction	25527	2	34	GASKET-set	67866	1
17	SHUTTER-choke	58984	1	35	REPAIR KIT	67870	1
18	NEEDLE-inlet	59717	1				

† Included in Repair Kit

Note - 68284 Check Valve can be used in place of 54444 Check Valve for carburetors that are hard starting.

VI 944 and VI 955

Tools

23846-2	ANVIL-bearing remover (backplate)
23846-1	ANVIL-crankshaft installation
24304	BIT-pozidriv #2
22820-4	COLLAR-bearing installation
24230	DRIVER-hand pozidriv
A-23965	JACKSCREW (crankshaft)
A-23962	JACKSCREW-bearing remover (backplate)
24006-1	PLATE-crankshaft aligning
23956	PLUG-bearing and seal installation (backplate)
23420	PLUG-bearing installation
23955	PLUG-bearing installation (conn. rod)
24302	PLUG-seal installation (backplate)
23957	PLUG-seal installation (crankcase)
A-23960	PULLER-rotor
24306	SHIM-(black) air gap
23987	SHIM-magneto air gap
23136-1	SLEEVE-bearing and shaft installation
23972	SLEEVE-seal installation (crankcase)
23971	SLEEVE-seal protecting (crankcase)
A-22808	WRENCH-combination (VI-955)
A-23937-B	WRENCH-combination (VI-944)
23528	WRENCH- hex soc. screw (conn. rod)
A-23696-A	WRENCH-spanner

Accessories

A-24279	KIT-fastening parts
A-24270	KIT-filter
A-24413	KIT-guide bar plate
A-24274	KIT-ignition
23488-B	KIT-Loctite
A-24266	KIT-starting rope
57084-1	REEL-250 ft., starting rope

Paint

22772	SPRAY CAN-black
23475	SPRAY CAN-red

Part No.	Description	Qty.	Part No.	Description	Qty.	Part No.	Description	Qty.	Part No.	Description	Qty.
22772	Spray Can-black	1	59253-1	Filter-felt	1	65518	Grommet	2	*A-68685-1	Handle Bar	1
A-22808	Wrench-comb.	1	59293	Spring	1	65520	Screw-shoulder	2	*A-68686	Bracket-air filter	1
22820-4	Collar-bearing	1	59351	Bearing-needle	1	65593	Line	1	68750	Retainer	1
23136-1	Sleeve-bearing	1	A-59456-A	Valve-check	1	65597-1	Clamp-fuel line	1	68751	Retainer	1
23420	Plug-bearing	1	59460	Spring	1	65599	Plate-handle bar	1	68765	Spacer-handle bar	1
23475	Spray Can-red	1	59675	Worm-gear	1	65629-1	Plate-lever	1	A-68845	C/case & Tank	1
23488-B	Kit-Loctite	1	59704	Screw	2	65630	Lever	1	A-68853-A	Cylinder	1
23528	Wrench-soc. screw	1	59705	Washer-lock	2	65633	Baffle-muffler	1	68874	Stud-muffler	3
A-23696-A	Wrench-spanner	1	59716	Lever	1	65714	Spring	1	*68905-2	Bracket	1
23846-1	Anvil-crankshaft	1	59717	Needle-inlet	1	65718	Line-fuel	1	A-68911-1	Cap-muffler	1
23846-2	Anvil-bearing	1	59736	Gasket-screw	1	65723-2	Spider-clutch	1	*68922-2	Arm	1
A-23937-B	Wrench-comb.	1	59926	Seal-felt	1	65798	Screw-oval	1	*A-68952-2	Handle Bar-flush	1
23955	Plug-bearing	1	63166-A	Valve-reed	4	65799	Shaft-choke	1	*68961	Gasket	1
23956	Plug-bearing & seal	1	63195	Bearing-roller	1	65821-1	Clamp-lever	1	*68964-1	Bracket-handle bar	1
23957	Plug-seal	1	63266-A	Rod-throttle	1	65822	Pin-throttle latch	1	*68978	Plate-muffler body	1
A-23960	Puller-rotor	1	63268-A	Spring-rewind	1	65830	Bushing	1	*A-68979	Body-muffler	1
A-23962	Jackscrew- c/shaft	1	63280-2A	Arm-oiler	1	A-65884	Sprocket & Drum	1	*A-68980-1	Cylinder	1
A-23965	Jackscrew- c/shaft	1	63284	Sprocket	1	A-65885	Sprocket & Drum	1	*A-68983	Muffler-complete	1
23971	Sleeve-crankcase	1	63285	Sprocket	1	A-65886	Sprocket & Drum	1	A-69056	Bearing-needle	1
23972	Sleeve-crankcase	1	A-63299	Line-oil	1	A-65887	Sprocket & Drum	1	*A-69128	Carburetor Chamber	1
23987	Shim-magneto	1	63316	Gasket	1	A-65900	Handle Bar	1	*69160	Bearing-flanged	2
24006-1	Plate-shaft aligning	1	63317	Cover-brk. box	1	66185	Pin-spirol	1	*69176	Isolator-vibration	1
24230	Driver	1	A-63327	Lever	1	67080	Connector	1	*69283	Ring-retaining	4
A-24266	Kit-starter rope	1	63341	Filter Element	1	67153-2	Cover	1	72084-A1	Nut	1
A-24270	Kit-filter	1	63343-3	Body-oil pump	1	*67156-5	Cover-drivecase	1	72085-A	Plate	1
A-24274	Kit-ignition	1	63367	Screw	1	67158	Bolt-guide bar	2	73075	Spring-adj. needle	2
A-24279	Kit-fastening parts	1	63369-A	Screw-idle adj.	1	67159	Gasket-fuel tank	1	73264	Spring-choke	1
24302	Plug-seal	1	63370-A	Retainer	1	67160	Plate-inner	1	74388	"O" Ring-plunger	1
24304	Bit-pozidriv #2	1	63371-B	Seat-reed	1	67161	Plate-outer	1	75078	Key-Woodruff	1
24306	Shim-air gap	1	63406	Rotor-magneto	1	67162	Module-ignition	1	76418	Spring-clip cover	1
A-24413	Kit-guide bar plate	1	63452-A	Tube	1	67163	Coil-core & gen.	1	76421	Screw-contact plate	1
25038	Gasket	1	63462	Washer-thrust	2	67164	Coil-transformer	1	FASTENING PARTS		
25301	Sleeve	2	63463	Washer-thrust	1	67165	Rotor-magneto	1	80048	1/4-20 x 5/8	4
25527	Ball-choke friction	4	63520-5	Cap-muffler	1	67166	Lead-hi tension	1	80248	8-32 x 3/4	4
28008	Clip-post	1	63521-A	Baffle-muffler	1	67167	Lead-transformer	1	80264	4-40 x 3/16	2
28028	Washer-point	1	*A-63540-C	Spark Arrester	1	67168-1	Crankshaft	1	80275	6-32 x 3/8	4
A-33055	Terminal-spark plug	1	63547-S	Spark Plug	1	67177	Bushing	1	80284	1/4-20 x 1	2
55344	Gasket	1	63565-A	Shield-outer	1	67191	Stud	11	80361-1	10-32 x 1/2	2
55411	Screw-contact plate	3	63566	Shield-inner	1	67321	Washer-copper	1	80402	1/4-20 x 5/8	3
55759	Spring-control lever	1	63621	Pin-dowel	2	67409	Ring-air flow	1	80428	1/4-20 x 1	1
55871	Stud	4	63625	Coil-ignition	1	67441	Spring-clutch	2	80560	8-32 x 1/2	2
56298	Bumper	1	63626	Condenser	1	A-67460-1	Manifold-intake	1	80567	8-32 x 3/4	1
57084-1	Reel-starting rope, 250ft.	1	63627	Clamp	1	67540	Gasket-carb.	1	80571	6-32 x 3/8	2
A-57834-14	Plunger-oil pump	1	63628	Retainer-felt	1	67559	"O" Ring	1	80591	4-40 x 1/4	5
58190-S	Bearing-ball	1	63630	Core-coil	1	67586-1A	Pin	1	80605	6-32 x 5/16	1
58319-A	Ring-retaining	2	A-63631	Points	1	A-67618	Plate-back	1	80648	10-32 x 1/2	1
58348	Boot-throttle rod	1	63632	Lead	1	A-67639	Nut	1	80676	12-24 x 5/8	8
58392-1	Gasket	1	*63634-10	Cover	1	A-67817	Switch-toggle	1	80751	Screw	2
58406	"O" Ring	1	63676	Screw	1	67866	Gasket-set	1	80805	8-32 x 9/16	2
58688	Seal	1	63677	Screw-idle adj.	1	67870	Kit-repair	1	80821	12-24 x 1/2	1
58688-A	Seal	2	63718	Valve-check	1	67875-1	Washer-tab lock	1	80867	12-24 x 3/4	2
58751-1	Cover-clutch	1	A-63720	Kit-bumper	1	67896-1	Shoe-clutch	6	80891	12-24 x 7/8	1
58756	Pawl-starter	2	63726	Clip	1	A-67989-1	Piston & Pin	1	80919	4-40 x 1/4	2
58757-B	Stud-shoulder	2	63751	Gasket	1	67994	Shutter-throttle	1	80989	8-32 x 1/4	1
58758	Spring-starter pawl	2	63778-1	Gasket-cyl.	1	A-67995	Shaft	1	81065-2	Nut-hex, 1/4-28	4
58763	Washer-retaining	1	*63779-C	Gasket	1	A-68008	Rod-connecting	1	81068	Nut-12-24	2
58806	Rope-starting	1	63855-A	Screw-shoulder	3	68010	Washer-thrust	2	81089-2	Nut-hex, 3/8-16	2
58847	Insert-rope retaining	1	64002	Cap-dust	1	A-68026	Valve	1	81108	Nut-1/4-20	1
58858	Grommet-hi-lo	1	64021	Screw	4	A-68027	Plate	1	81109-2	Nut-hex, 10-32	3
58859	Trigger-throttle	1	64049-A	Lock	1	68078-1	Guard-chain	1	81124	Nut-hex, 3/8-24	1
58915	Grip-starting rope	1	64090	Screw-ground	1	68249	Piston Ring	2	81126	Nut-lock, 6-32	2
A-58934	Block-terminal	1	64102-A	Screw-cam	1	A-68251-A	Carburetor	1	82146	8-32 x 5/8	6
58974	Screen	1	64124	Bearing-roller	1	A-68265	Pump-auto. oil	1	82147	8-32 x 1-3/4	1
58975	Cover	1	64129	Race-inner	1	68284	Valve-check	1	82155	8-32 x 2-3/16	8
58977	Pin-fulcrum	1	A-64293	Filter	1	68297	Plug-screw	1	82178	8-32 x 3/4	7
58978	Gasket	1	64400	Bushing	1	*68302-2	Handle-trigger	1	82179	10-32 x 1-7/8	2
58979	Cover	1	A-64421	Screen	1	*68304	Pin	1	82196	8-32 x 1-1/8	3
58980-R	Diaphragm	1	64443	Bushing	1	*68305	Screw-shoulder	1	83008-1	Washer-lock, #4	6
58981	Gasket	1	A-64446	Pulley	1	*68306	Pin	1	83009	Washer-lock, 1/4	4
58982	Clip	1	A-64504-B	Housing-fan	1	*A-68310	Valve-check	1	83022	Washer-lock, #8	7
58984	Shutter-choke	1	A-64715	Shield	1	*A-68313	Cover-trigger	1	83024	Washer-lock, #6	4
58988	Diaphragm	1	64742	Ring	2	*A-68320	Isolator-vibration	3	83046	Washer-lock, #10	2
58991	Plug-extension	1	64862	Grommet	1	*68321	Isolator-vibration	1	83056	Washer-lock, #12	2
59000	Line-oil pick-up	2	65143	Cap	1	*68328	Line-oil (intake)	1	83102	Washer-lock, 3/8	1
59022	Spring	1	A-65283-B	Cap-fuel	1	68397	Lever-choke	1	84006-1	Washer-flat	3
A-59031	Lead-ground	1	A-65284-A	Cap-oil	1	68397	Lever-choke	1	84010-1	Washer-flat, 3/8	1
59064	Bushing-nylon	1	65357	Grommet	1	A-68429	Rod-choke	1	86324	Pin-cotter	1
59074	"O" Ring-shaft	1	65483	Gasket	1	68641	Pin-grooved	1	86329	Pin-cotter	1
A-59251	Filter-fuel	1									

Leon Chaisakulchai & R. P. ...
 FASTENING PARTS

* Denotes new parts