

# HOMELITE®

CHAIN SAW

123

Leon's Chainsaw Parts & Repair  
Do Not Sell or Reproduce

PRICE .35



A **textron** DIVISION, PORT CHESTER, N.Y. 10573

PART NO. 24655

# VI 123 Chain Saw

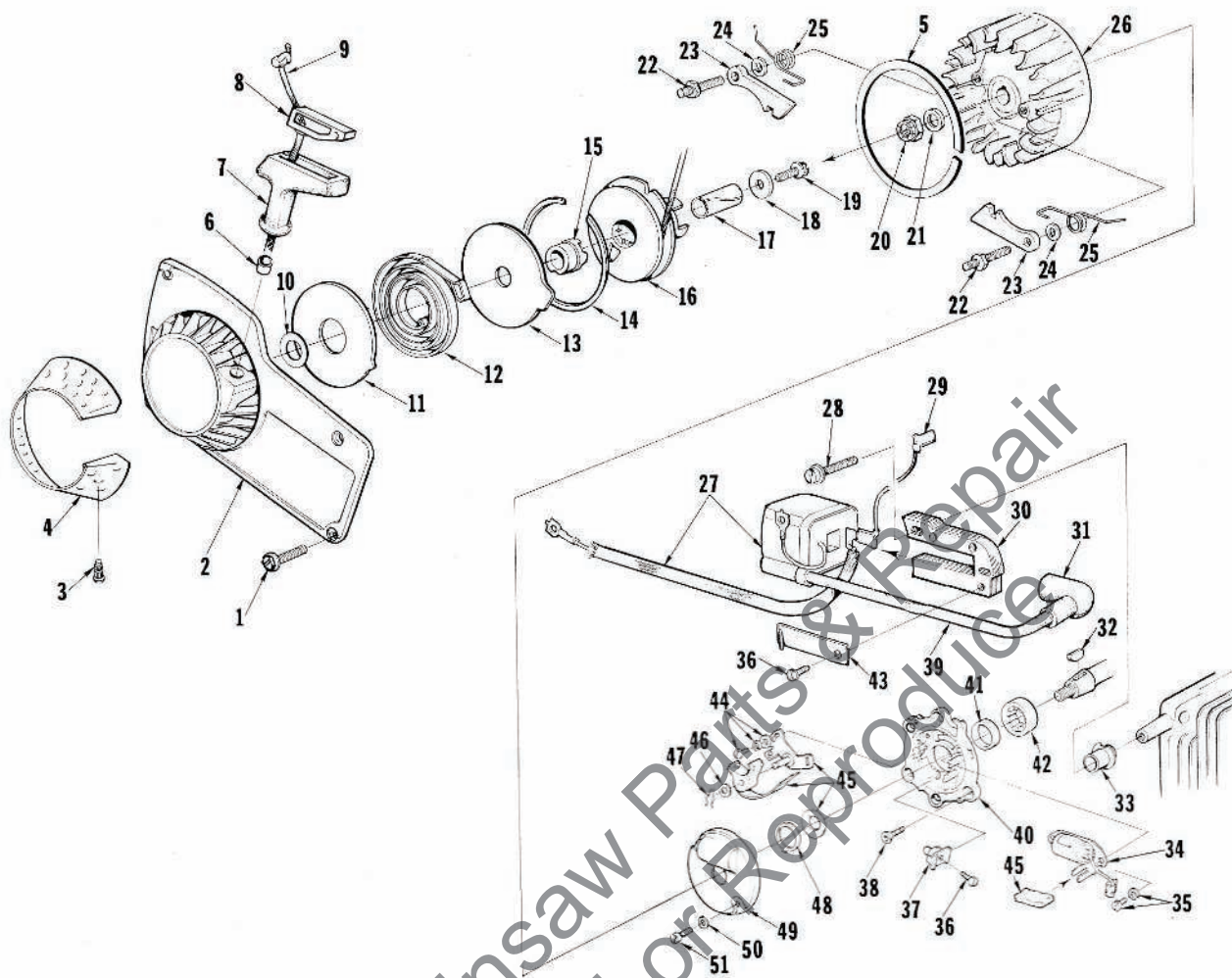


FIGURE 1

No.	Description	Part No.	Qty.	No.	Description	Part No.	Qty.
1	SCREW-hex, 8-32 x 1/2	80983	4	27	COIL-ignition	64091	1
2	HOUSING-fan	A-67192-A	1	28	SCREW-coil core	64021	2
3	Includes: STUD-drive	67191	4	29	LEAD-ground to switch	A-63939	1
4	SCREEN-fan housing	65491	1	30	CORE-coil	54422	1
5	RING-air flow	67222	1	31	TERMINAL-spark plug	A-33055	1
6	BUSHING-starter rope	67177	1	32	KEY-Woodruff	75078	1
7	GRIP-starting rope	64155-A	1	33	RETAINER-lead	64301	1
8	INSERT-rope retaining	68837	1	34	CONDENSER & CLAMP	64086	1
9	ROPE-starter, 45" #4-1/2	63869	1	35	SCREW-condenser clamp	55411	2
10	WASHER	67185	1	36	SCREW	64090	2
11	SHIELD-spring (inner)	63713	1	37	BLOCK-terminal	64088	1
12	SPRING-rewind	63870	1	38	SCREW-back plate retainer	65321	5
13	SHIELD-spring (outer)	63714	1	39	LEAD-high tension	58966	1
14	RING-shield retaining	63875	1	40	PLATE-back	A-68142	1
15	LOCK-spring	64948	1	41	Includes: SEAL	58688-A	1
16	PULLEY & CUP ASSEMBLY	A-63952-B	1	42	BEARING-roller	67395	1
17	BUSHING-starter post	64374	1	43	CLIP-coil retaining	54423	1
18	WASHER-retaining	63606	1	44	SCREW-breaker clamp	76121	2
19	SCREW-hex, 10-32 x 1/2	80618	1	45	POINT-act w/felt	A-64087	1
20	NUT-lock, 5/16-24	81112	1	46	Includes: WASHER-post	28028	1
21	WASHER-flat, 5/16	84065-1	1	47	CLIP-post	28008	1
22	STUD-shoulder	63877	2	48	RETAINER-felt	64089	1
23	PAWL-starter	64442	2	49	COVER-breaker box	A-63928	1
24	WASHER-flat	83056	2	50	WASHER-flat #6	84018	2
25	SPRING-starter pawl	58758-2	2	51	SCREW-cover	64085	2
26	ROTOR-magneto	63637	1				

# VI 123 Chain Saw

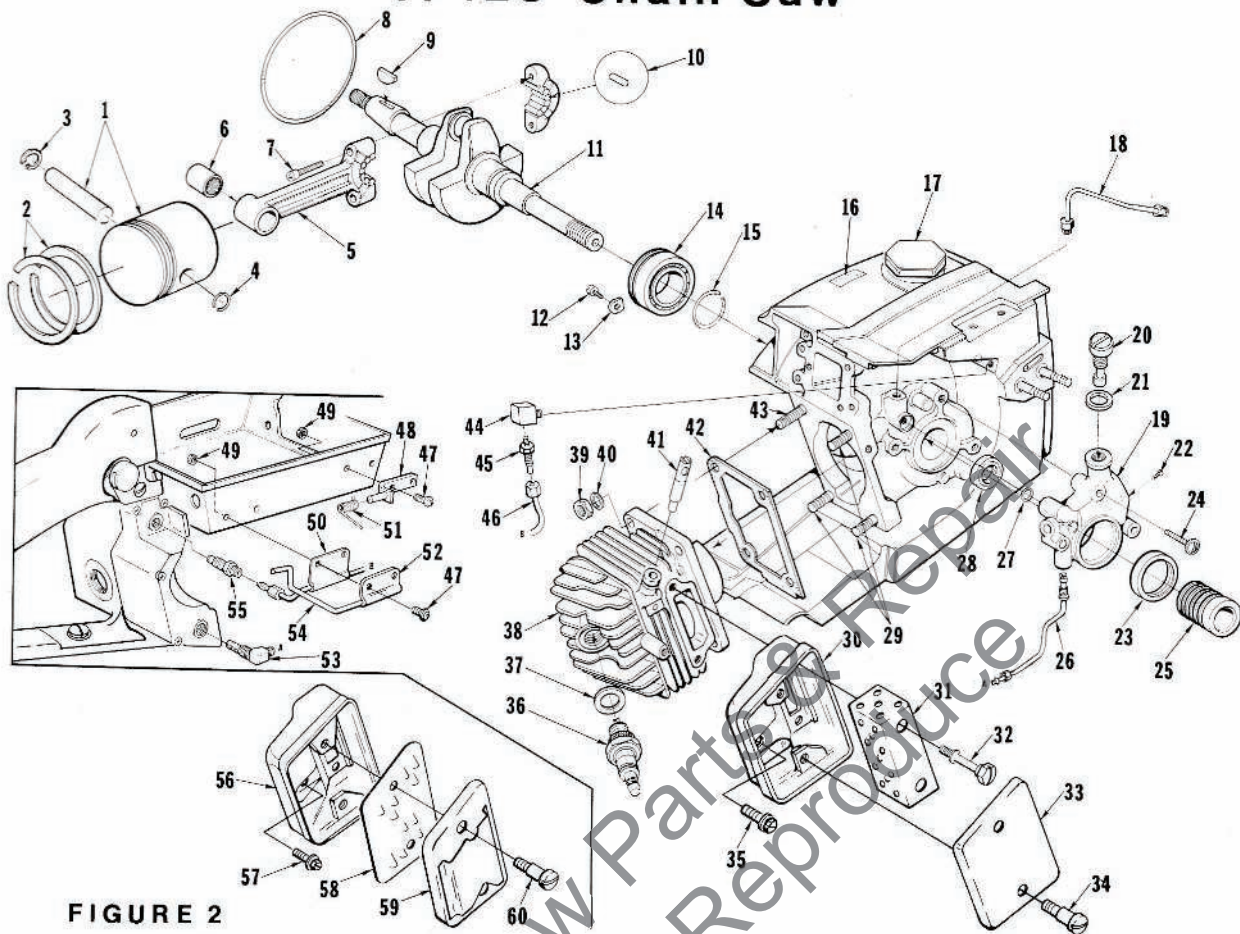


FIGURE 2

No.	Description	Part No.	Qty.	No.	Description	Part No.	Qty.
1	PISTON & PIN Includes:	A-68438	1	*	MUFFLER (complete) Includes:	A-69232	1
2	PISTON RING	59436	2	*30	BODY-muffler	A-69231-1	1
3	RING-retaining	75120	1	*31	BAFFLE-muffler	69230-1	1
4	RING-piston pin retaining	64813	1	*32	SCREW-shoulder	68481	2
5	ROD-connecting Includes:	A-68498	1	*33	CAP-muffler	69228-1	1
6	BEARING-needle	67408	1	34	SCREW-shoulder	64133-A	2
7	SCREW	80541	2	35	SCREW-hex, 12-24 x 1/2	80821	1
8	"O" RING	58785	1	36	SPARK PLUG	63547-S	1
9	KEY-Woodruff	75078	1	37	Includes: GASKET	25038	1
*10	ROLLER-needle (set of 25)	A-69050	1	*38	CYLINDER	A-65795-1A	1
11	CRANKSHAFT	68730	1	39	NUT-hex, 1/4-28	81065-2	4
12	SCREW-bearing retainer	59704	2	40	WASHER-lock, 1/4	83009	4
13	WASHER-special	63905	2	41	PIN-compression release	A-67482	1
14	BEARING-ball	63865-S	1	42	GASKET-cylinder	65829	1
15	RING-retaining	58319-A	1	43	STUD-cylinder (long)	63868	1
16	DECAL	64144	1	44	CONNECTOR-elbow	81734	1
17	CAP-fuel filler	A-65283-B	1	45	FITTING-straight	65696	1
18	LINE- oil (auto. upper)	A-63919	1	46	LINE-oil (manual)	A-67079	1
19	PUMP-automatic oil Includes:	A-67023	1	47	SCREW-pan, 6-32 x 3/8	80571	4
20	SCREW-cam	64102-A	1	48	PIVOT PIN & BRACKET	A-64656-2	1
21	GASKET	59736	1	49	NUT-flexlock, 6-32	81126	4
22	SCREW-pan, 4-40 x 1/4	80919	2	50	CLAMP-oil	65949-2	1
23	SEAL-felt	64393	1	51	SPRING-relief valve	64653	1
24	SCREW-pan, 8-32 x 7/8	80568	3	52	CLAMP-lever	64655-2	1
25	WORM-oil pump	63228	1	53	FILTER-oil	A-64741	1
26	LINE-oil (auto. lower)	A-63947	1	54	LEVER-relief valve	64654-B	1
27	"O" RING	59074	1	55	VALVE-check	A-65948	1
28	SEAL	58308-A	1		MUFFLER (complete)	A-68953	1
29	STUD-cylinder (short)	55871	3		Includes:		
				56	BODY-muffler	† A-64130-2	1
				57	SCREW-hex, 12-24 x 1/2	† 80821	3
				58	BAFFLE-muffler	† 68472	1
				59	CAP-muffler	† A-68951-1	1
				60	SCREW-shoulder	† 64133-A	1

\* Denotes new parts

† Optional

ALWAYS FURNISH MODEL AND SERIAL NUMBER WHEN ORDERING PARTS.

# VI 123 Chain Saw

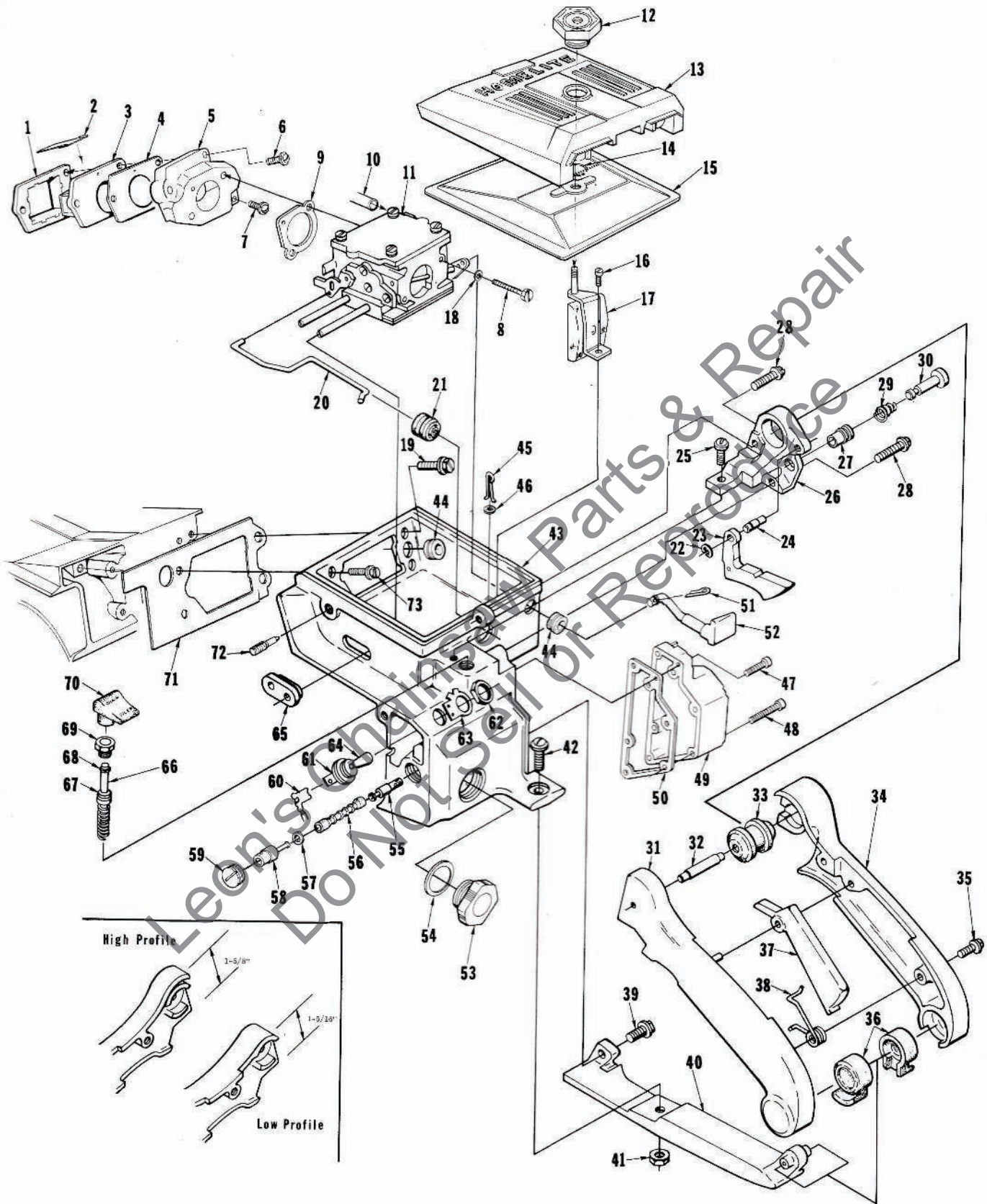


FIGURE 3

ALWAYS FURNISH MODEL AND SERIAL NUMBER WHEN ORDERING PARTS.

# VI 123 Chain Saw

No.	Description	Part No.	Qty.	No.	Description	Part No.	Qty.
1	RETAINER-reed valve	64253-A	1	*38	SPRING-trigger	68681	1
2	REED-valve	59678-B	4	39	SCREW-hex, 12-24 x 1-1/4	80994	1
3	SEAT-reed valve	64252-A	1	*40	BASE-handle	A-69085-1	1
4	GASKET-reed valve seat	64266	1	*41	NUT-hex, 12-24	81225	1
5	MANIFOLD-intake	A-67502-A	1	42	SCREW-pan 12-24 x 5/8	80707	1
	Includes:			*43	CARBURETOR CHAMBER	A-69163	1
6	SCREW-pan, 8-32 x 1-1/4	82174	2		Includes:		
7	SCREW-pan, 8-32 x 1	82173	1	44	GROMMET	64862	2
8	SCREW-hex, 10-32 x 1-7/8	82179	2	45	PIN-cotter	86301	1
9	GASKET-carburetor	67631	1	46	WASHER-felt	63290	1
10	LINE-fuel	63544	1	47	SCREW-fil, 8-32 x 3/4	82156	3
11	CARBURETOR (SDC-31)	A-68402	1	48	SCREW-fil, 8-32 x 1-5/8	82153	3
12	NUT-cover mounting	A-67627	1	49	COVER-oil tank	A-68120	1
*13	COVER-air filter	63183-6	1		Includes:		
14	RING-retaining	58319-A	1	50	PLUG-pipe (not shown)	59571	1
15	FILTER ELEMENT-air	A-63955-A	1		GASKET-oil tank	67265	1
16	SCREW-hex, 12-24 x 1/2	80821	1	51	PIN-cotter	86324	1
17	BRACKET-air filter cover	A-68056	1	52	ROD-choke	67000-1	1
18	WASHER-lock, #10	83046	2	53	CAP-oil (vented)	A-65284-A	1
19	SCREW-hex, 12-24 x 7/8	80891	1		Includes:		
*20	ROD-throttle	69064	1	54	"O" RING	65133	1
21	BOOT-throttle rod	67634	1		VALVE-vent (not shown)	63718	1
*22	RING-retaining	69071	1	55	FILTER-oil (manual)	A-64293	1
*23	TRIGGER-throttle	63212-1	1	56	LINE-flexible oil	64356	1
*24	PIN-trigger	69069-1	1	57	GASKET	59736	1
25	SCREW-pan, 10-32 x 1/2	80625	1	58	FITTING-check valve	A-63936	1
*26	BRACKET-vibration mount	A-69180	1	59	SCREW-set	63113	1
27	Includes: BUSHING-nylon	64646	1	60	LEAD-ground	A-63939	1
28	SCREW-pan, 10-32 x 5/8	80572	2	61	SWITCH	A-63938	1
29	SPRING-throttle latch	64677	1	62	Includes: NUT	72084-A1	1
30	PIN-throttle latch	65592-A	1	63	PLATE-'on-off'	63910	1
*31	HANDLE-throttle (left, high profile)	A-69086	1	*64	SLEEVE-grounding switch	69092	1
*	HANDLE-throttle (left, low profile)	A-69086-1	1	65	GROMMET-'hi-lo'	58858	1
*32	PIN-vibration isolator	68999	1	66	PLUNGER-oil pump	A-68061-A	1
*33	ISOLATOR	68323	1	67	Includes: "O" RING	58406	1
*34	HANDLE-throttle (right, high profile)	68974-2	1	68	"O" RING	59074	1
*	HANDLE-throttle (right, low profile)	69222-2	1	69	NUT-plunger	65082	1
*35	SCREW-pan, 8-32 x 5/8	80582	2	70	BUTTON-oil pump	67386	1
*36	ISOLATOR	68325	2	71	GASKET-carburetor chamber	64267	1
*37	TRIGGER-throttle latch	68682	1	72	SCREW-idle adjustment	65522-A	1
	* Denotes new parts			73	SCREW-hex, 12-24 x 5/8	80676	1

FIGURE 3

# VI 123 Chain Saw

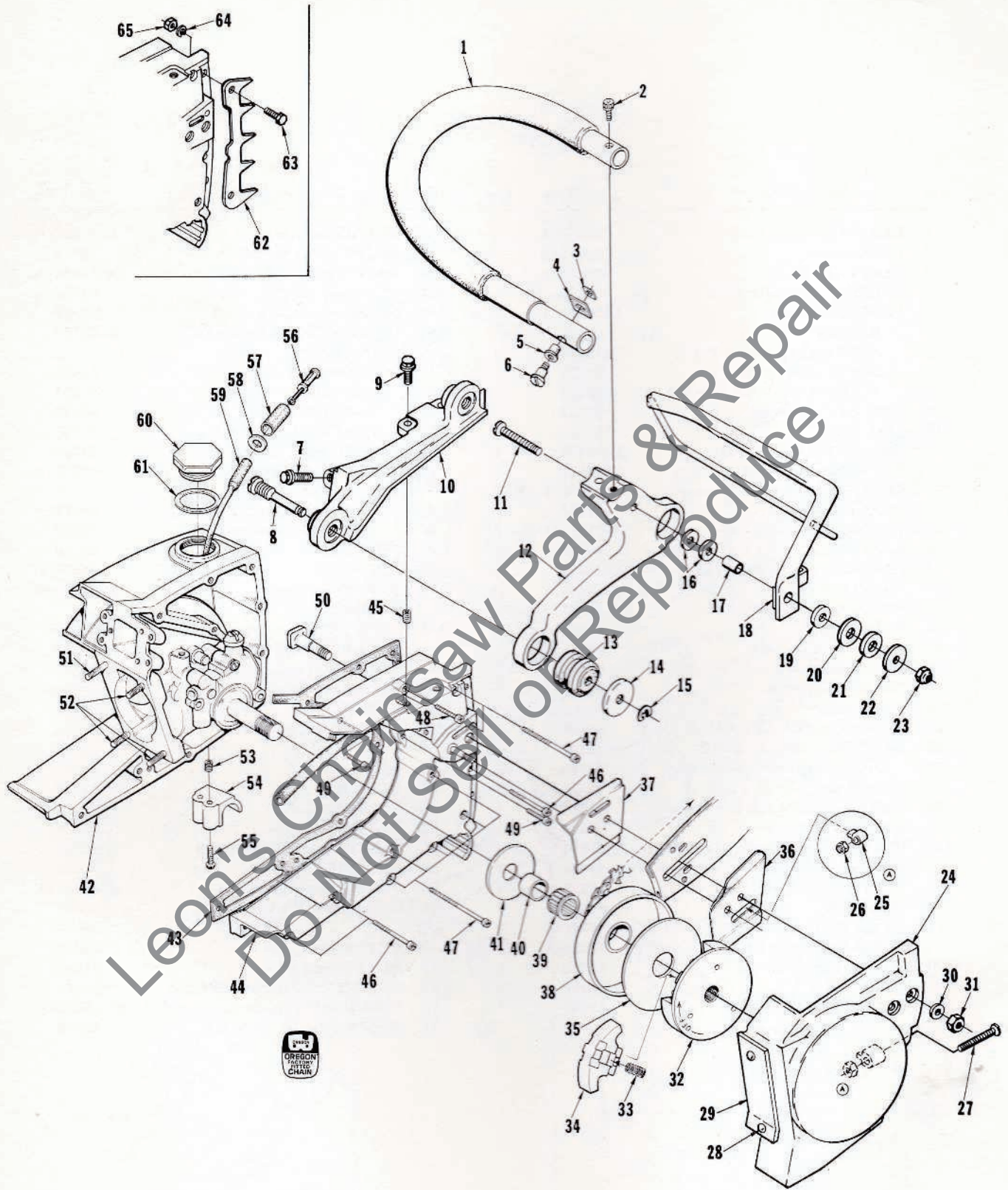


FIGURE 4

# VI 123 Chain Saw

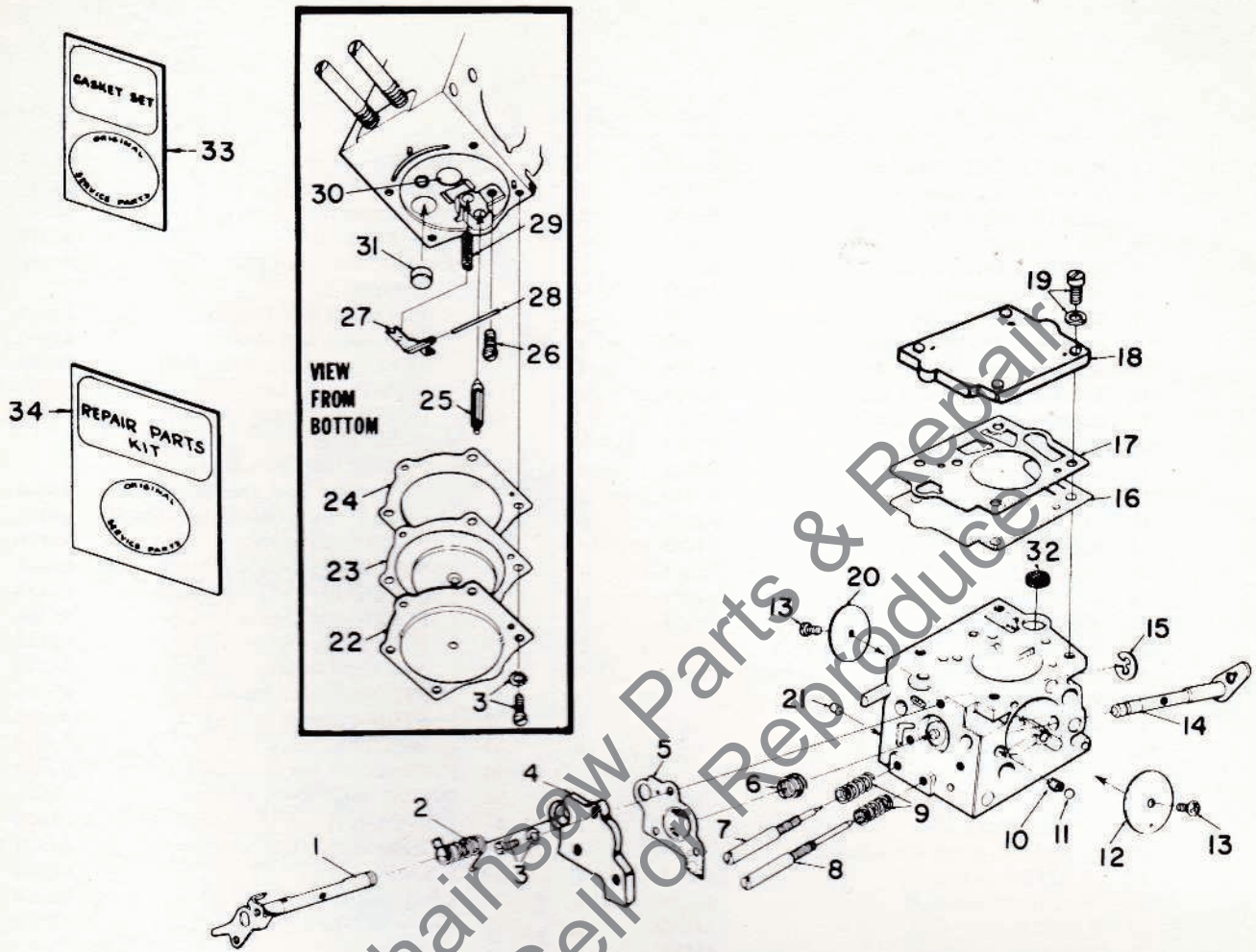
No.	Description	Part No.	Qty.	No.	Description	Part No.	Qty.
1	HANDLE BAR-flush cut	A-69033-1	1				
2	SCREW-soc, 10-32 x 1	82126	1		WASHER-thrust	† 58833-1	1
3	PLATE-handle bar	65670	1	39	BEARING-cage	64124	1
4	PAD-handle bar	68394	1	40	RACE-inner	65985	1
5	GROMMET-handle bar	65122	1	41	WASHER-thrust	63860	1
6	SCREW-shoulder	68339	1	*42	CRANKCASE & TANK	A-69162	1
7	SCREW-hex, 12-24 x 7/8	80891	1		Includes:		
* 8	SCREW-vibration mount	68997	2		PIN-dowel (not shown)	71430	2
9	SCREW-hex, 10-32 x 5/8	80704	2		PIN-dowel (not shown)	65365	2
*10	BRACKET-vibration mount	68992-2	1	43	SEAL-(see fig. 2 index #28)	58308-A	1
11	SCREW-flat, 12-24 x 1-1/2	82223	1	44	GASKET-fuel tank	65364-A	1
*12	BRACKET-handle bar	A-69164	1		COVER-fuel tank	A-68040	1
*13	ISOLATOR-vibration	68320	2		Includes:		
*14	WASHER	68998-1	2		GASKET-check valve		
15	"E" RING	67857	2		(not shown)	65144	1
16	WASHER-flat	84006-1	2	45	CAP-check valve (not shown)	65143	1
17	BUSHING	68934-1	1	46	INSERT-taplock	72489	3
18	GUARD-anti-kickback	A-68932-1	1	47	SCREW-fil, 8-32 x 1-7/8	82154	3
19	WASHER-flat	84099	1	48	SCREW-fil, 8-32 x 2-3/16	82155	7
20	WASHER-flat	68939-1	1	49	SCREW-fil, 8-32 x 1-1/4	82152	1
21	WASHER	68935	1	50	SCREW-fil 8-32 x 15/16	82151	2
22	WASHER-flat	68940-1	1	51	BOLT-guide bar	67193	2
23	NUT- 12-24	81222	1	52	STUD-cylinder (long)	63868	1
*24	COVER-chain	A-69090	1	53	STUD-cylinder (short)	55871	3
	Includes:			54	INSERT-taplock	72482	2
25	PIN-bar adjusting	65768-1	1	55	STOP-handle bar	67506-2	1
26	NUT-lock, 10-32	81211	1	56	SCREW-pan, 10-32 x 5/8	80572	2
27	SCREW-guide bar adjusting	65173-A	1	57	FILTER-fuel	A-63920	1
28	RIVET-oval head	85061	2	58	Includes: FILTER-felt	64083-1	1
29	SHIELD-sawdust	84618	1	59	WASHER	64182	1
30	WASHER-flat, 5/16	84032	2	60	LINE-fuel	63544	1
31	NUT-hex, 5/16-18	81196	2	61	CAP-fuel filler	A-65283-B	1
	CLUTCH	A-64910	1		Includes:		
	Includes:			62	GASKET	68961	1
32	PLATE-clutch	64904-1	1	63	VALVE-check (not shown)	63718	1
33	SPRING-clutch	65842	3	64	BUMPER-spiked	† A-64722	1
34	SHOE-clutch	64569-3	3		Includes:		
35	COVER-clutch	63671	1	65	SCREW-hex, 12-24 x 5/8	† 80676	2
36	PLATE-guide bar (outer)	67299	1		WASHER-lock, #12	† 83056	2
37	PLATE-guide bar (inner)	67300	1		NUT-hex, 12-24	† 81068	2
*38	SPROCKET & DRUM						
	.325 pitch, 8 tooth	A-68896	1				
	SPROCKET & DRUM (see note)	† A-64908	1				
	HUB & DRUM-splined	† A-65988	1				
	SPROCKET-splined						
	3/8 pitch, 7 tooth	† OM-68210	1				

\* Denotes new parts      † Optional

NOTE: Sprocket & Drum A-64908 requires the use of one (1) 63860 Thrust Washer, one (1) 63990 Inner Race and one (1) 64333 Needle Bearing for proper assembly.

FIGURE 4

# VI 123 Chain Saw



## A-68402 (SDC-31)

No.	Description	Part No.	Qty.	No.	Description	Part No.	Qty.
1	SHAFT-throttle	64225	1	19	SCREW-fuel pump cover	64694	4
2	SPRING-throttle return	† 67006	1	20	VALVE-throttle	67700	1
3	SCREW ASSEMBLY	64689	7	21	PLUG-limiting	64692	2
4	COVER-accelerator pump	67187	1	22	COVER-metering diaphragm	64224	1
5	DIAPHRAGM-accelerator pump	† 67188	1	23	METERING DIAPHRAGM ASSEMBLY	† 64235	1
6	SPRING-accelerator pump	† 64240	1	24	GASKET-metering diaphragm	‡ 64231	1
7	NEEDLE-idle	† 64241	1	25	VALVE-inlet needle	† 64229	1
8	NEEDLE-high speed	† 64242	1	26	SCREW-metering lever pin	† 64688	1
9	SPRING-needle adjusting	† 64236	2	27	LEVER-metering	† 64245	1
10	SPRING-choke friction	† 64238	1	28	PIN-metering lever	† 64244	1
11	BALL-choke friction	† 60051	1	29	SPRING-metering lever	† 64237	1
12	VALVE-choke	64228	1	30	PLUG-Welch (main) 5/16	† 65482	1
13	SCREW-valve	† 64693	2	31	PLUG-Welch (idle) 3/8	† 30818	1
14	SHAFT-choke	67109	1	32	SCREEN-fuel inlet	† 64243	1
15	RING-throttle shaft retaining	64221	1	33	GASKET SET	† 67019	1
16	DIAPHRAGM-fuel pump	† 64233	1	34	REPAIR KIT	67197	1
17	GASKET-fuel pump	‡ 67008	1		REPAIR KIT-check valve	65386	1
18	COVER-fuel pump	67002	1				

† Contained in repair kits

‡ Contained in gasket sets



# VI 123 Chain Saw

## Tools

23846-2	ANVIL-roller bearing disassembly
24304	BIT-pezidriv #2
22820-5	COLLAR-bearing installation (bearing to shaft)
24173	DRIVER-check valve installation
24230	DRIVER-hand, pozidriv
A-24051	JACKSCREW- (bearing to shaft to crankcase)
24006-2	PLATE-shaft alignment
22828	PLIERS-retaining ring
A-24057	PLUG-bearing remover (back plate)
24055	PLUG-bearing & seal assembly (back plate)
A-23949	PLUG-piston pin removal
67900	Includes: "O" Ring
24054	PLUG-seal installation (crankcase)
23756	PLUG-needle bearing (connecting rod)
A-23960	PULLER-rotor removal
A-24138	REAMER-compression release
23987	SHIM-plastic (magneto air gap)
24076	SLEEVE-seal protecting (crankcase side)
23972	SLEEVE-seal installation
23136-1	SLEEVE-bearing & shaft installation
23759	SLEEVE-seal protection (back plate)
A-23934	SPANNER-clutch
23954	Includes: PIN-clutch spanner
A-23937-B	WRENCH-combination
23528	WRENCH-socket screw (connecting rod)

## Accessories

68470-1	CAP-muffler (diffuser type, without shield)
65543-1	HEAT EXCHANGER
A-24450	KIT-guide bar plate
A-24273	KIT-ignition
A-24267-B	KIT-starter rope
68282	REEL-250' starter rope
A-64818	SPARK ARRESTER (reed muffler)

## Paint

22772	SPRAY CAN-black
23475	SPRAY CAN-red

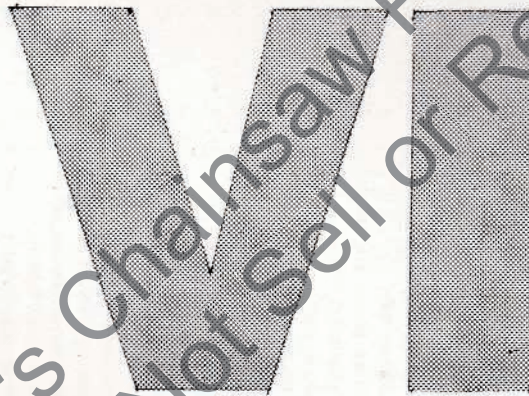
# VI 123 Chain Saw

Part No.	Description	Qty.	Part No.	Description	Qty.	Part No.	Description	Qty.	Part No.	Description	Qty.
22772	Spray Can-black	1	A-62938	Switch	1	65364-A	Gasket-fuel tank	1	A-68951-1	Cap-muffler	1
22820-5	Collar-bearing	1	A-63929	Lead-ground to switch	2	65365	Pin-dowel	2	A-68933	Muffler-complete	1
22828	Pliers-retaining ring	1	A-63341	Line-oil(guide lower)	1	65386	Repair Kit-check valve	1	68961	Gasket	1
23136-1	Sleeve-bearing & shaft	1	A-63352-B	Pulley & Cap Assembly	1	65482	Plug-Welch (main)	1	*68974-2	Handle-throttle	1
23475	Spray Can-red	1	A-63955-A	Filter Element-air	1	65491	Screen-fan housing	1	*68992-2	Bracket-vibration mount	1
23528	Wrench-socket screw	1	63990	Race-inner	1	65522-A	Screw-idle adjustment	1	*68997	Screw-vibration mount	1
23756	Plug-needle bearing	1	64021	Screw-ball core	2	65543-1	Heat Exchanger	1	*68998-1	Washer	2
23759	Sleeve-seal protection	1	64083-1	Filter-felt	1	65592-A	Pin-throttle lock	1	*68999	Pin-vibration isolator	1
23846-2	Anvil-roller bearing	1	64085	Screw-cover	1	65670	Plate-handle bar	1	A-69033-1	Handle Bar-flush cut	1
A-23934	Spammer-clutch	1	64086	Condenser Comp	1	65696	Fitting-straight	1	*A-69050	Roller-needle	1
A-23937-B	Wrench-combination	1	A-64087	Block-terminal	1	65768-1	Pin-bar adjusting	1	*69064	Rod-throttle	1
A-23949	Plug-piston pin removal	1	64088	Block-terminal	1	*A-65795-1A	Cylinder	1	*69069-1	Pin-trigger	1
23954	Pin-clutch spanner	1	64089	Retainer-felt	1	65829	Gasket-cylinder	1	*69071	Ring-retaining	1
A-23960	Puller-rotor removal	1	64091	Screw-terminal	2	65842	Spring-clutch	3	*A-69085-1	Base-handle	1
23972	Sleeve-seal installation	1	64102-A	Coil-ignition	1	65944	Screw-guide bar adj.	1	*A-69086	Handle-throttle	1
23987	Shim-plastic	1	64124	Screw-cam	1	A-69946	Valve-check	1	*A-69086-1	Handle-throttle	1
24006-2	Plate-shaft alignment	1	A-64130-2	Bearing-cage	1	65949-2	Clamp-oil	1	*A-69090	Cover-chain	1
A-24051	Jackscrew	1	64133-A	Body-muffler	1	65985	Race-inner	1	*69092	Sleeve-grounding switch	1
24054	Plug-seal (crankcase)	1	64144	Screw-shoulder	2	A-65988	Drum & Hub	1	*A-69162	Crankcase & Tank	1
24055	Plug-bearing & seal	1	64155-A	Decal	1	67000-1	Rod-choke	1	*A-69163	Carburetor Chamber	1
A-24057	Plug-bearing remover	1	64182	Grip-starting rope	1	67006	Spring-fuel pump	1	*A-69164	Bracket-handle bar	1
24076	Sleeve-seal protecting	1	64224	Washer	1	67008	Spring-throttle return	1	*A-69180	Bracket-vibration mount	1
A-24138	Reamer	1	64225	Ring-throttle shaft	1	A-67023	Gasket-fuel pump	1	*69222-2	Handle-throttle	1
24173	Driver-check valve	1	64228	Shaft-throttle	1	67109	Gasket-set	1	*69230-1	Handle-throttle	1
24230	Driver-hand	1	64231	Valve-choke	1	A-67072	Pump-automatic oil	1	*A-69232	Body-muffler	1
A-24267-B	Kit-ignition	1	64233	Valve-inlet needle	1	67117	Line-oil (manual)	1	*A-69232	Muffler-complete	1
24304	Bit-pozidriv #2	1	64235	Gasket-metering diaphragm	1	67158	Choke Shaft Assembly	1	71430	Pin-dowel	1
A-24450	Kit-guide bar plate	1	64236	Diaphragm-fuel pump	1	67185	Bushing-starter rope	1	72984-A1	Nut	2
25038	Gasket	1	64237	Metering Diaphragm	1	67187	Washer	1	72482	Nut	1
28028	Chip-post	1	64238	Spring-needle adjusting	1	67197	Cover-accelerator	1	72488	Insert-taplock	2
28028	Washer-post	1	64240	Spring-metering lever	2	67222	Diaphragm-accelerator	1	72489	Insert-taplock	2
30818	Plug-Welch (idle)	1	64241	Spring-metering lever	1	67265	Stud-drive	4	75078	Key-Woodruff	3
31734	Connector-elbow	1	64243	Spring-choke friction	1	67299	Housing-fan	1	75120	Ring-retaining	1
A-33055	Terminal-spark plug	1	64244	Spring-accelerator pump	1	A-67192-A	Repair Kit	1	76421	Screw-breaker clamp	2
54422	Core-coil	1	64245	Needle-idle	1	67300	Bolt-guide bar	2	FASTENING PARTS		
54423	Chip-coil retaining	1	64245	Needle-high speed	1	67386	Repair Kit	1	80541	8-32 x 1/2	2
55411	Screw-condenser clamp	1	64245	Screen-fuel inlet	1		Ring-air flow	1	80568	8-32 x 7/8	3
55871	Stud-cylinder (short)	2	64252-A	Pin-metering lever	1		Gasket-oil tank	1	80571	6-32 x 3/8	3
58308-A	Seal	3		Lever-metering	1		Plate-guide bar (outer)	1	80572	10-32 x 5/8	4
		1		Seat-reed valve	1		Plate-guide bar (inner)	1	*80582	8-32 x 5/8	4

Copyright © 1977 by Sears, Roebuck & Co. All rights reserved. No part of this publication may be reproduced without the prior written permission of Sears, Roebuck & Co.



Leon's Chainsaw Parts & Repair  
Do Not Sell or Reproduce



• textron  
DIVISION

PORT CHESTER, NEW YORK, U.S.A. 10573