

PRICE.25

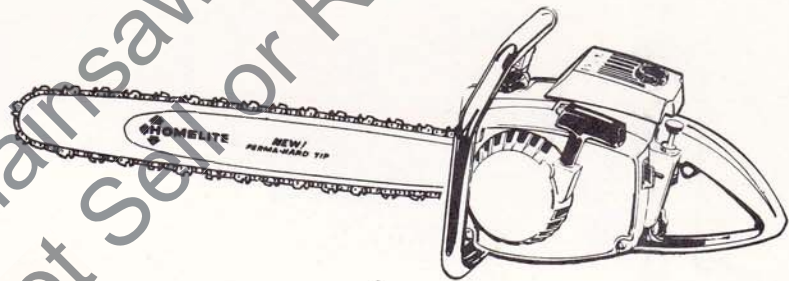
# PARTS LIST

## SUPER XL

### XL AUTOMATIC DIRECT DRIVE

### XL AUTOMATIC GEAR DRIVE

# HOMELITE®



# XL

## CHAIN SAWS

PART NO. 23840 Rev. 2  
PRINTED IN U.S.A.

469

Leon's Chainsaw Parts & Repair  
Do Not Sell or Reproduce

# HOMELITE XL CHAIN SAWS

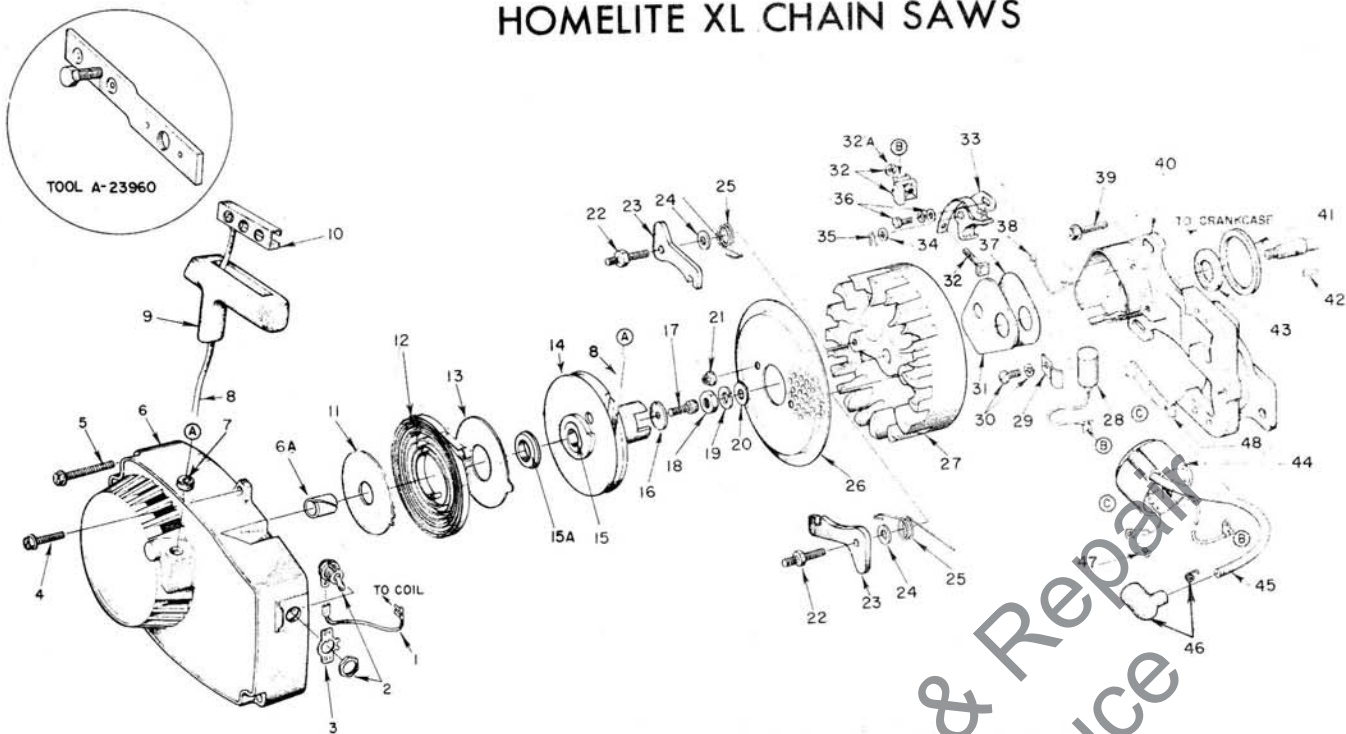


FIGURE 1

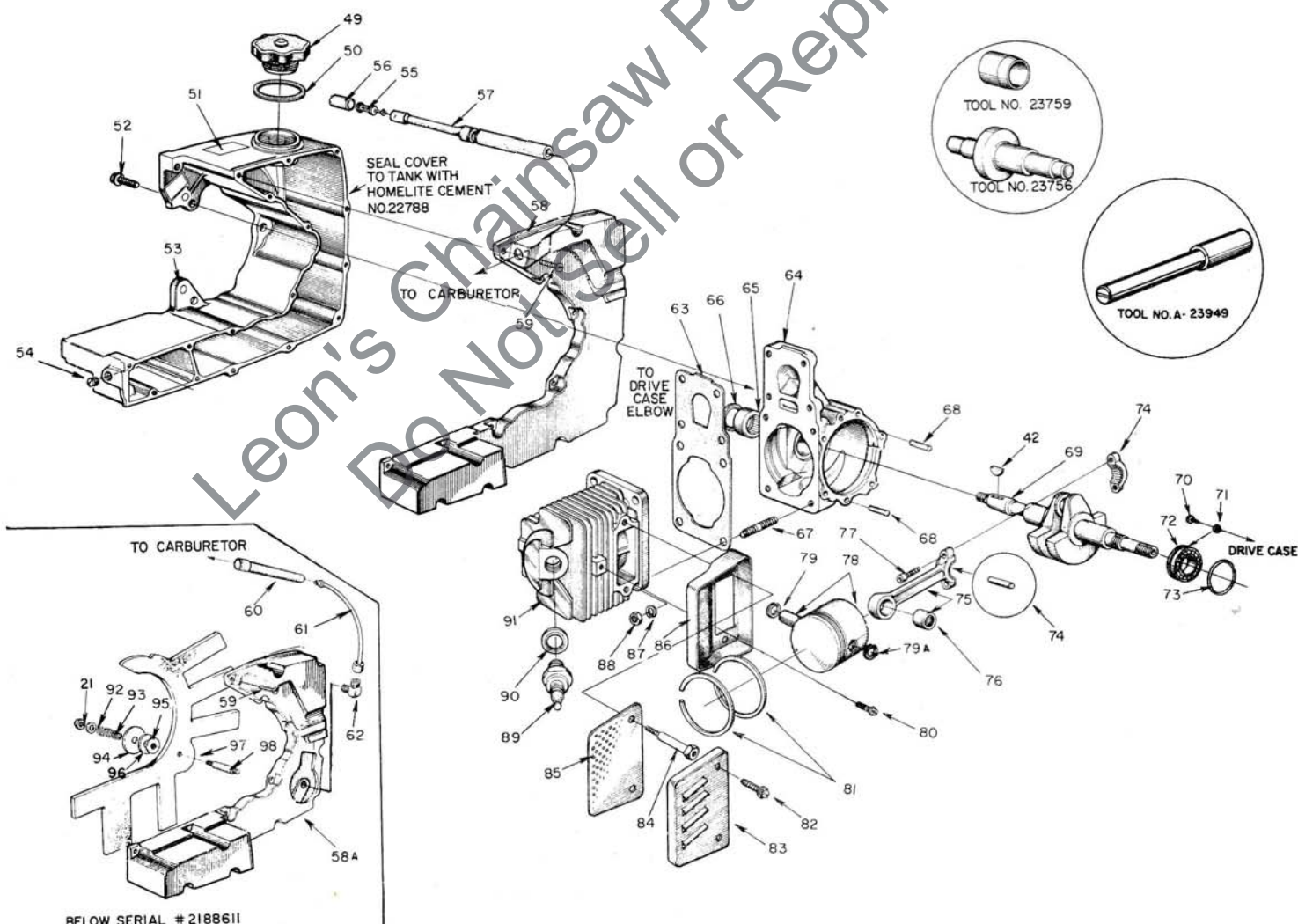


FIGURE 2

ALWAYS FURNISH MODEL AND SERIAL NUMBER WHEN ORDERING PARTS.



# HOMELITE XL CHAIN SAWS

Parts used in each model are indicated by an (x) in the corresponding model column; (†) indicates an optional part.

No.	Description	Part No.	Automatic				No.	Description	Part No.	Automatic			
			Direct	Gear	Super	Qty.				Direct	Gear	Super	Qty.
			XL	XL	XL				XL	XL	XL	Qty.	
1	LEAD-ground w/terminal	A-59031	x	x	x	1	47	SCREW-coil clip	"W"58872	x	x	x	1
2	SWITCH-w/nut	A-57650-3	x	x	x	1		SCREW-coil clip	"P"55977	x	x	x	1
3	PLATE-"On-Off"	72085-A	x	x	x	1	48	CLIP-coil retaining	"W"63726	x	x	x	1
4	SCREW-hex, 12-24 x 5/8	80676	x	x	x	1		CLIP-coil retaining	"P"59863	x	x	x	1
5	SCREW-hex, 12-24 x 1 11/16	58963	x	x	x	3	49	CAP-fuel filler	A-64140-1	x	x	x	1
6	HOUSING-fan	A-64518	x	x	x	1	50	Includes: GASKET	65358	x	x	x	1
6A	Includes: BUSHING-starter	64443	x	x	x	1	51	DECAL	64144	x	x	x	1
*7	BUSHING-rope	67177	x	x	x	1	52	SCREW-shoulder (1)	63407	x	x	x	3
8	ROPE-starter	58806	x	x	x	1	53	TANK-fuel (2)	58732-4	x	x	x	1
9	GRIP-rope	58915	x	x	x	1	54	PLUG-pipe, 1/16-27	59571	x	x	x	1
10	INSERT	58847	x	x	x	1	55	FILTER-fuel	A-59251	x	x	x	1
11	SHIELD-spring (inner)	59638-A	x	x	x	1	56	Includes: FILTER-fuel	59253-1	x	x	x	1
12	SPRING-recoil	58764-A	x	x	x	1	57	LINE-fuel, flexible	63745	x	x	x	1
13	SHIELD-spring (outer)	59639-A	x	x	x	1	58	COVER-tank	63739-2	x	x	x	1
14	PULLEY-starter	A-64446	x	x	x	1	58A	COVER-tank	59693-3	x	x	x	1
15	Includes: LOCK-spring	64049-A	x	x	x	1	59	SCREW-rd., #6 x 1/2	80513	x	x	x	16
15A	BUSHING-spring	64400	x	x	x	1	60	LINE-fuel, flexible	58958	x	x	x	1
16	WASHER-retaining	58763	x	x	x	1	61	LINE-fuel, formed (2)	A-59814	x	x	x	1
17	SCREW-hex, 10-32 x 1/2	80648	x	x	x	1	62	FITTING	58995	x	x	x	1
18	NUT-hex, 5/16-24	81117	x	x	x	1	63	GASKET	59771	x	x	x	1
19	WASHER-lock, 5/16	83002	x	x	x	1	64	CRANKCASE (3)	A-58799-D	x	x	x	1
20	WASHER-flat, 5/16	84056	x	x	x	1	65	Includes: BEARING	58956	x	x	x	1
21	NUT-lock, 10-32	81109-2	x	x	x	2	66	SEAL	58688-A	x	x	x	1
22	STUD-pawl	58757-B	x	x	x	2	67	STUD	55871	x	x	x	4
23	PAWL-starter	58756	x	x	x	2	68	PIN-dowel	63621	x	x	x	2
24	WASHER	58851	x	x	x	2	69	CRANKSHAFT (8)	63498	x	x	x	1
25	SPRING-starter pawl	58758	x	x	x	2	70	SCREW-bearing retainer	59704	x	x	x	2
26	SCREEN-air	58765	x	x	x	1	71	WASHER-lock	59705	x	x	x	2
27	ROTOR-magneto	"W"58809	x	x	x	1	72	BEARING-ball	58190-S	x	x	x	1
	ROTOR-magneto	"P"59857	x	x	x	1	73	RING-retaining	58319-A	x	x	x	1
28	CONDENSER	"W"63250	x	x	x	1	74	ROLLER-set (3) (8)	A-63496	x	x	x	1
	CONDENSER	"P"59862	x	x	x	1	75	ROD-connecting (8)	A-63477	x	x	x	1
29	CLAMP-condenser	"W"59622	x	x	x	1	76	Includes: BEARING	58724	x	x	x	1
30	SCREW GROUP-condenser	"W"30261	x	x	x	1	77	SCREW	80889	x	x	x	2
	SCREW GROUP-condenser	"P"57750	x	x	x	1	78	PISTON & PIN (4)	A-59468-C	x	x	x	1
31	COVER-breaker box	"W"58811	x	x	x	1	79	Includes: RING-retainer	75120	x	x	x	1
	COVER-breaker box	"P"59864	x	x	x	1	79A	RING-retainer	64813	x	x	x	1
32	TERMINAL BLOCK GROUP	"W"58934	x	x	x	1	80	SCREW-pan, 12-24 x 1/2	†80963	x	x	x	1
32A	NUT (only)-terminal	"P"55982	x	x	x	1	81	PISTON RING	59436	x	x	x	2
33	POINT SET-w/felt	"W"58914	x	x	x	1	82	SCREW-hex, 10-32 x 9/16	†80825	x	x	x	2
34	Includes: WASHER-point	"W"28028	x	x	x	1	83	CAP-muffler (5)	†A-63246	x	x	x	1
35	CLIP-post	"W"28008	x	x	x	1	84	STUD (5)	†59891-A	x	x	x	2
33	POINT SET-w/felt and terminal block	"P"58961	x	x	x	1	85	BAFFLE	59050	x	x	x	1
36	SCREW GROUP-points	"W"76421	x	x	x	1	86	BODY-muffler (3 holes) (6)	†A-59895-A	x	x	x	1
	SCREW GROUP-points	"P"57749	x	x	x	1		BODY-muffler (2 holes) (6)	A-59895	x	x	x	1
37	GASKET-cover	"W"58810	x	x	x	1	87	WASHER-lock, 1/4	83009	x	x	x	4
	GASKET-cover	"P"59865	x	x	x	1	88	NUT-1/4-28	81065-2	x	x	x	4
38	CLIP-cover	"W"76413	x	x	x	1	89	SPARK PLUG (9)	63547-S	x	x	x	1
	CLIP-cover	"P"59866	x	x	x	1	90	Includes: GASKET	25038	x	x	x	1
39	SCREW-hex, 12-24 x 5/8	80676	x	x	x	3	91	CYLINDER (7)	58706-B1	x	x	x	1
40	BOX-breaker	"W"58876-A	x	x	x	1	92	WASHER-flat, #10	84003-1	x	x	x	1
	BOX-breaker	"P"59859	x	x	x	1	93	SPRING-compression	58867	x	x	x	1
41	GASKET	58538	x	x	x	1	94	WASHER-wick	58866	x	x	x	1
42	KEY-rotor	75078	x	x	x	1	95	WASHER-felt	59457	x	x	x	1
43	SEAL-felt	59760	x	x	x	1	96	GASKET	58865	x	x	x	1
44	COIL	"W"58874	x	x	x	1	97	WICK-fuel pick-up	58862	x	x	x	1
	COIL	"P"59860	x	x	x	1	98	STUD-wick	58519	x	x	x	1
45	LEAD-high tension	58966	x	x	x	1							
46	TERMINAL (8)	A-33055	x	x	x	1							

\*Denotes new part

Ignition Type-"W" indicates Wico, "P" indicates Phelon.

Do Not Interchange Parts.

## ACCESSORY

- A-24266 STARTER ROPE KIT
- A-24271 IGNITION KIT (Wico)
- A-24272 IGNITION KIT (Phelon)
- A-24277 FASTENER KIT
- A-64306 MUFFLER-husher
- A-63321 EXCHANGER-heat
- A-63500 ARRESTER-spark

Use #63503 Shim (.030) under Muffler Studs with Spark Arrester.

When Spark Arrester & Noise Suppressor are used together use #63503-1 Shim (.060) under Muffler Studs.

- A-63434-A MUFFLER & NOISE SUPPRESSOR KIT
- A-63080 Includes: SUPPRESSOR-noise

†Included with A-63434-A Muffler & Noise Suppressor Kit

# HOMELITE XL CHAIN SAWS

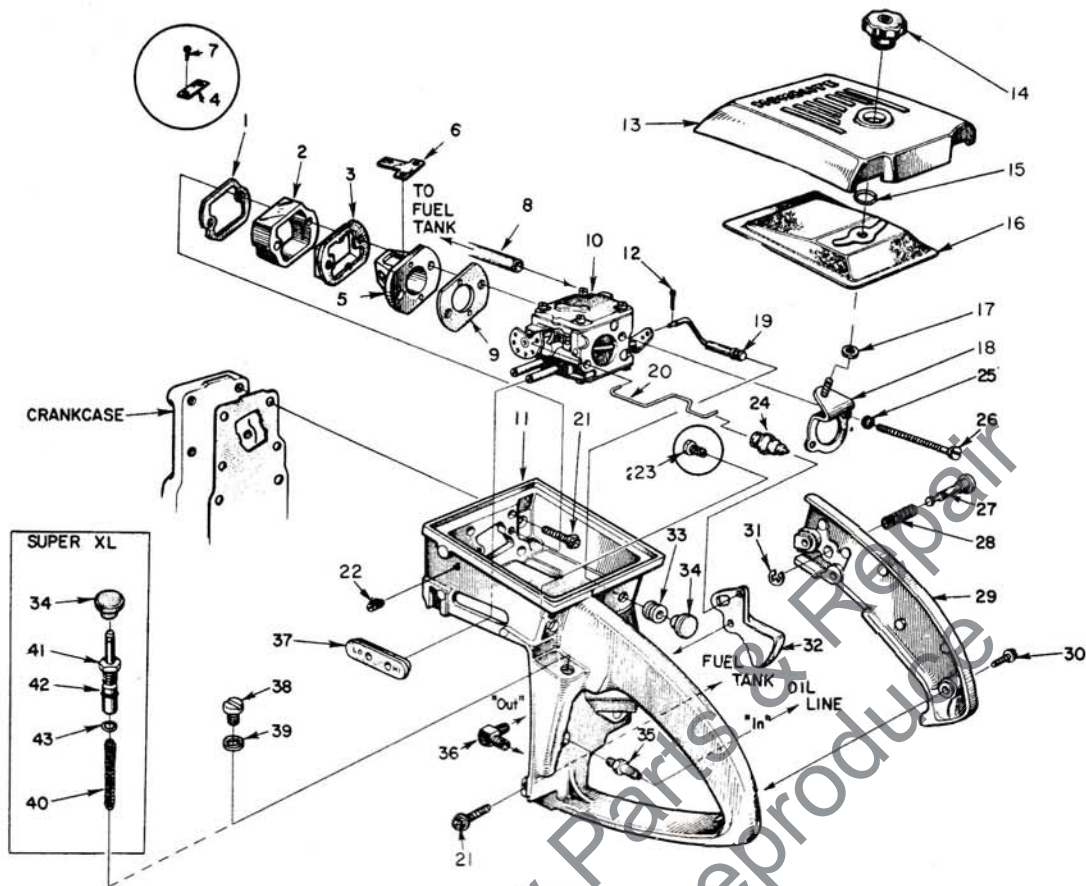


FIGURE 3

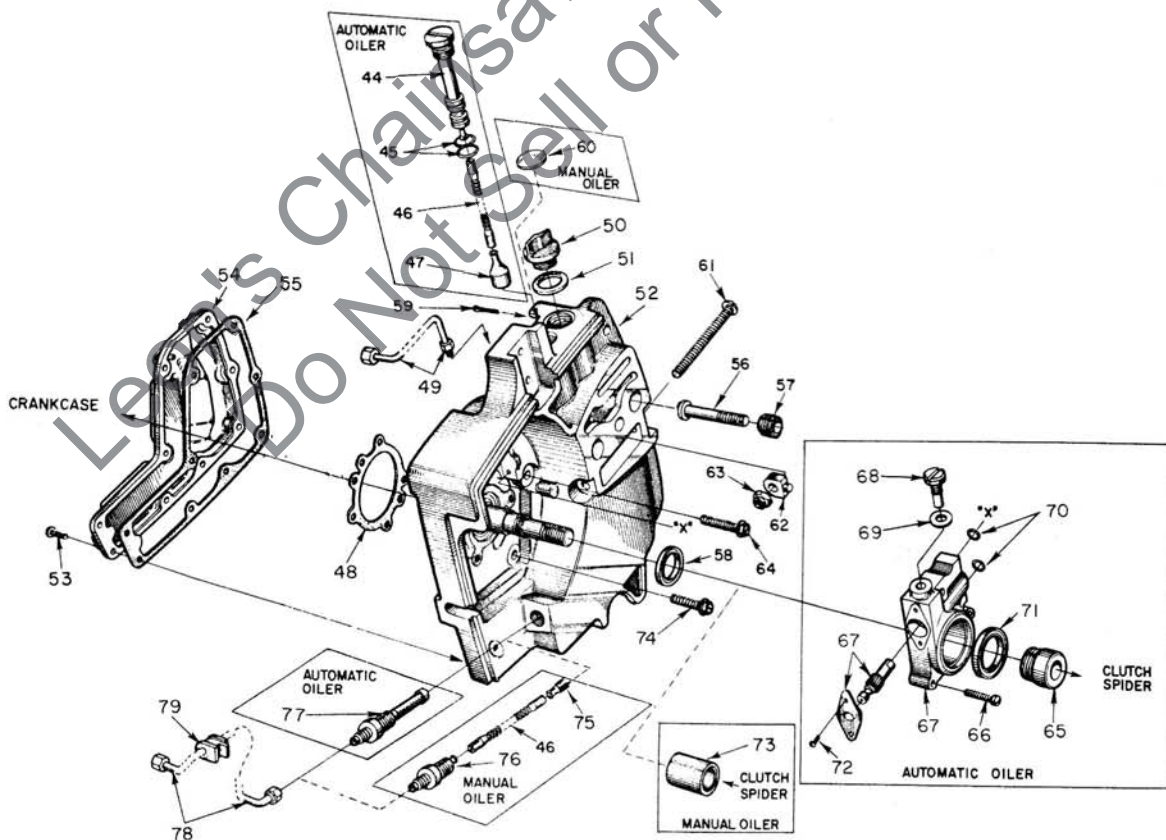


FIGURE 4

ALWAYS FURNISH MODEL AND SERIAL NUMBER WHEN ORDERING PARTS.



# HOMELITE XL CHAIN SAWS

Parts used in each model are indicated by an (x) in the corresponding model column; (†) indicates an optional part.

No.	Description	Part No.	Automatic				No.	Description	Part No.	Automatic			
			Direct	Gear	Super	Qty.				Direct	Gear	Super	Qty.
1	GASKET-spacer	59274	x	x	x	1	38	PLUG	59798-1	x	x		1
2	SPACER	59718	x	x	x	1	39	GASKET	59779	x	x		1
3	RETAINER-reed valve (10)	63260	x	x	x	1	40	SPRING-plunger	†59293	†	†	x	1
4	SPRING-valve (10)	59679	x	x	x	4	41	PLUNGER-oil pump	†A-57834-10	†	†	x	1
5	SEAT-reed valve (10)	63253	x	x	x	1	42	Includes: "O" RING-plunger	†74388	†	†	x	1
6	VALVE-reed	59678-A	x	x	x	4	43	"O" RING-shaft	†59074	†	†	x	1
7	SCREW-pan, 4-40 x 1/8 (10)	80918	x	x	x	8	44	TUBE-oil line	59325	x	x		1
8	LINE-fuel (flexible) (12)	63745	x	x	x	1	45	"O" RING	59765	x	x		2
9	GASKET-carburetor	59722	x	x	x	1	46	LINE-oil	59674	x	x	x	1
10	CARBURETOR (1)	A-58767-C	x	x	x	1	47	FILTER-oil	A-58828	x	x		1
	CARBURETOR-(alternate)	A-65962	x	x	x	1	48	GASKET	63355	x	x	x	1
11	HANDLE-throttle	A-59931-A	x	x	x	1	49	LINE-oil (discharge)	A-59806	x	x	x	1
	Includes: (Not Shown)						50	CAP-filler oil	A-63717-A	x	x	x	1
	COTTER PIN	86301	x	x	x	1	51	Includes: GASKET	56607	x	x	x	1
	FELT	63290	x	x	x	1		VALVE-vent (not shown)	63718	x	x	x	1
	PLUG	63310	x	x	x	1	52	DRIVECASE-A. O. Model	A-59930-C	x			1
	PLUG	63303	x	x	x	1	*	DRIVECASE-Gear Drive Model	A-65561	x			1
12	COTTER PIN	86324	x	x	x	1		DRIVECASE-Super XL	A-59951-B			x	1
13	COVER-air filter	58773-5	x	x	x	1	53	Includes: SCREW-rod, #6 x 1/2	80513	x	x	x	9
14	NUT-cover	A-58882	x	x	x	1	54	COVER-oil reservoir	59649-4	x	x	x	1
15	RING-retaining	58319-A	x	x	x	1	55	GASKET-cover	59710	x	x	x	1
16	FILTER ELEMENT-air	63589	x	x	x	1	56	STUD-guide bar	59764-A	x	x	x	2
17	GASKET-mounting stud	58392-1	x	x	x	1	57	INSERT-threaded	59896-A	x	x	x	2
18	BRACKET-mounting	A-59822	x	x	x	1	58	SEAL	58308-A	x	x	x	1
19	ROD-choke	A-59826	x	x	x	1	59	COTTER PIN	86301	x	x	x	1
20	ROD-throttle	59763	x	x	x	1	60	PLUG-expansion	59950			x	1
21	SCREW-hex, 12-24 x 7/8	80891	x	x	x	5	61	SCREW-pin, 1/4-20 x 2	63225	x	x	x	1
22	SCREW-idle (1)	63302	x	x	x	1	62	PIN-bar adjusting	58783-1	x	x	x	1
23	SCREW-idle (1)	59916	x	x	x	1	63	NUT-lock, 1/4-20	81108	x	x	x	1
24	BOOT-throttle rod	58348	x	x	x	1	64	SCREW-hex, (2-24 x 1	80864	x	x	x	1
25	WASHER-lock, #10	83046	x	x	x	2	65	WORM	59675	x	x		1
26	SCREW-hex, 10-32 x 2 11/16	80921	x	x	x	2	66	SCREW-pan, 8-32 x 3/4	80248	x	x		3
27	PIN-throttle lock	58924	x	x	x	1	67	PUMP-automatic oiler	A-59809-A	x	x		1
28	SPRING-lock	58405	x	x	x	1	68	Includes: SCREW-cam	64102-A	x	x		1
29	COVER-handle	A-59213	x	x	x	1	69	GASKET	59736	x	x		2
	Includes: BUSHING-pin	59064	x	x	x	1	70	"O" RING	90872	x	x		1
30	SCREW-pan, 8-32 x 1/2	80560	x	x	x	2	71	SEAL-felt	59926	x	x		1
31	RING-retaining	58409	x	x	x	1	72	SCREW-pan, 4-40 x 1/4	80919	x	x		2
32	THROTTLE-trigger	58859	x	x	x	1	73	SPACER	59848			x	1
33	GROMMET	58362	x	x	x	1	74	SCREW-hex, 12-24 x 9/16	80899	x	x	x	4
34	BUTTON	57289-1	x	x	x	1	75	FILTER-oil	A-59009			x	1
	BUTTON	†57289-1	†	†	x	2	76	CONNECTOR	59937			x	1
35	VALVE-check "In"	†A-59818	x	x	x	1	77	FILTER-oil w/connector	†A-59804	x	x		1
36	VALVE-check "Out", 90°	A-59011	x	x	x	1	78	LINE-oil (intake)	†A-59819	x	x	x	1
37	GROMMET	59770	x	x	x	1	79	Includes: GROMMET	59794	x	x	x	1

\*Denotes new part

## ACCESSORY

A-24268	FILTER KIT
A-65868	MANUAL OIL PUMP KIT
	†Included in A-65868 Kit

## SPECIAL TOOLS (available on order)

A-23937-B (13)	WRENCH-combination	23136	BODY-jackscrew
A-22808 (13)	WRENCH-combination	A-23137	JACKSCREW
22828	PLIERS-piston snap ring	22820-1	COLLAR-bearing
23528	WRENCH-socket screw (conn. rod)	A-23841-A	WRENCH-insert (guide bar stud)
23756	PLUG-installation (conn. rod)	A-23949	PLUG-piston pin removal
23757	PLUG-bearing installation (drive & crankcase)	A-23934 (14)	CLUTCH SPANNER WRENCH
23819	PLUG-needle bearing (sprocket)		
-----	BEARING PULLER-clutch drum (#A-78 Snap-On or equivalent for XL Auto Gear Bearing only)		
23758	PLUG-seal installation (crankcase)	23665	Gear Drive Models
23759	SLEEVE-seal protecting (crankcase)	A-23696 (14)	PLIERS-planetary snap ring
A-23960	REMOVER & LOCKING BRACKET-rotor	23773	REMOVER-threaded spider
23800	SLEEVE-seal installation (crankcase)	23772	BEARING ASSEMBLY-clutch drum
23884-A	SLEEVE-bearing & shaft installation	A-23792	PLUG-bearing installation (planetary follower)
23844	SLEEVE-seal protection (drivecase)		SPROCKET HOLDER
23843	SLEEVE-seal installation (drivecase)		
23845	PLUG-seal installation (drivecase)	PAINT	
23846	ANVIL-crankshaft installation	23318	SPRAY CAN-blue
		22771	SPRAY CAN-red
		23343	SPRAY CAN-green
		23560	SPRAY CAN-white

# HOMELITE XL CHAIN SAWS

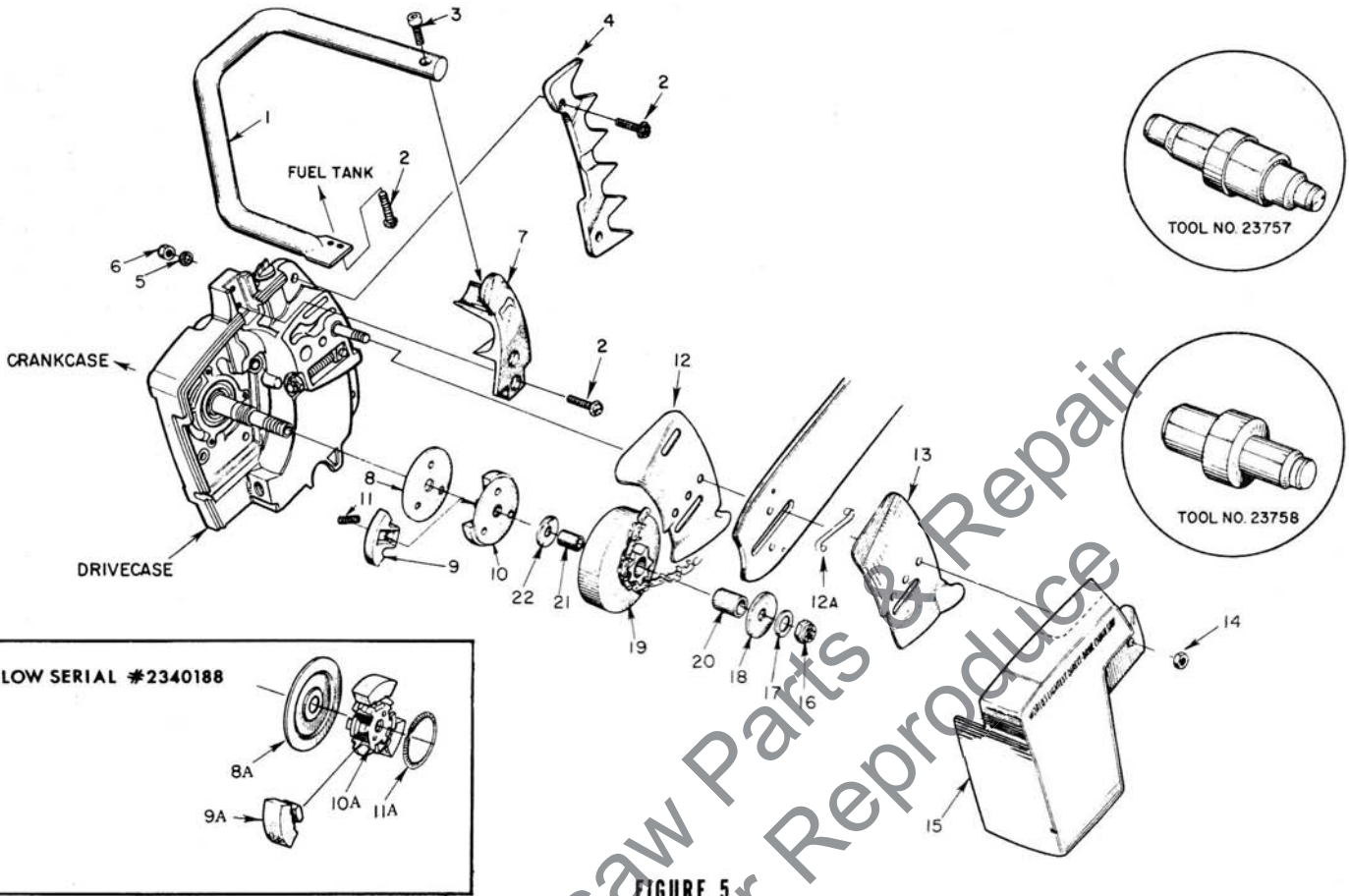


FIGURE 5

## GEAR DRIVE

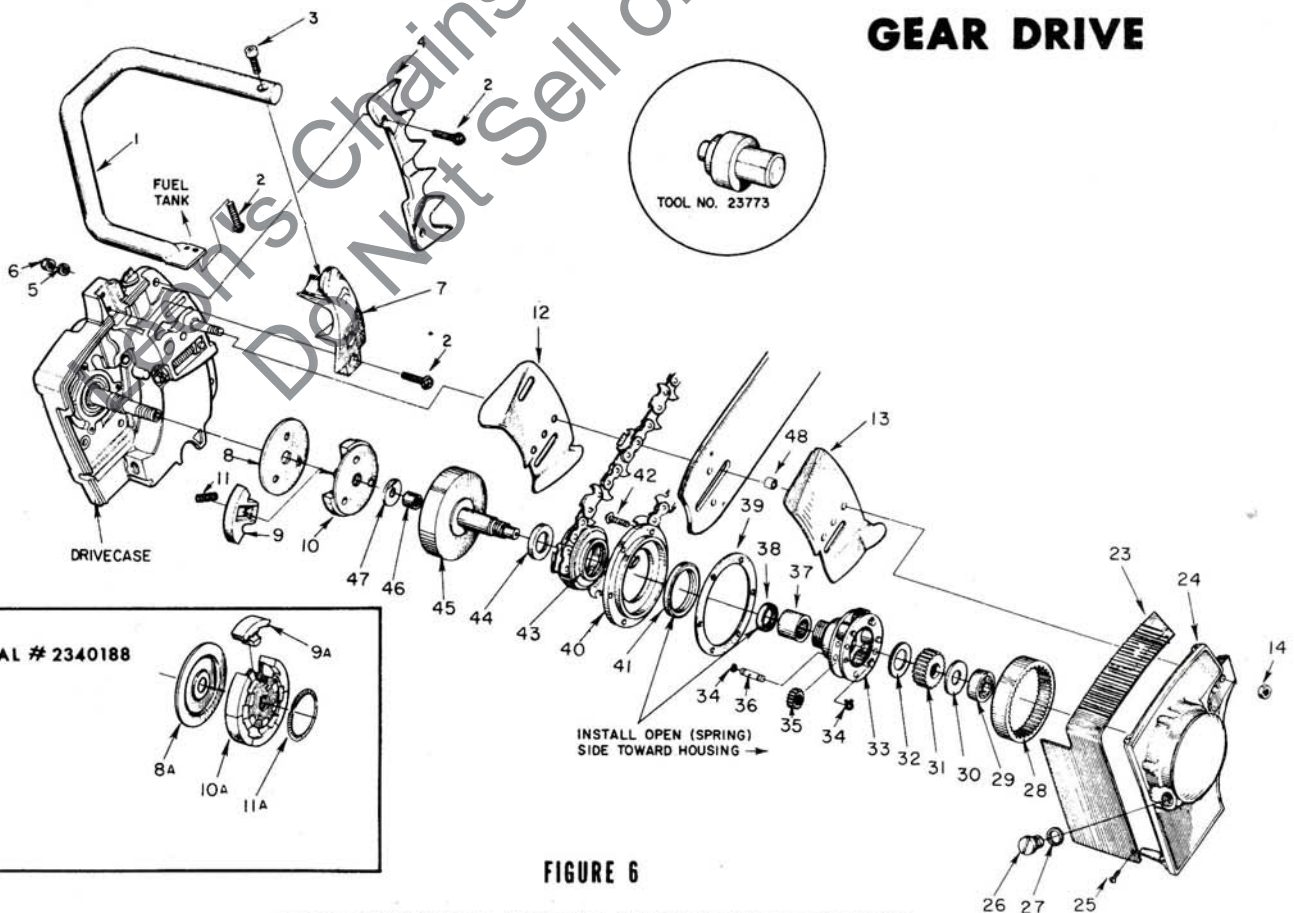


FIGURE 6

ALWAYS FURNISH MODEL AND SERIAL NUMBER WHEN ORDERING PARTS.



# HOMELITE XL CHAIN SAWS

Parts used in each model are indicated by an (x) in the corresponding model column; (†) indicates an optional part.

No.	Description	Part No.	Automatic				No.	Description	Part No.	Automatic			
			Direct	Gear	Super	Qty.				Direct	Gear	Super	Qty.
1	HANDLE BAR-flush cut	A-59790	x	x	x	1	KIT-hub & drum (rim type)	A-67090	†	†	†	1	
	HANDLE BAR-wrap around <sup>(15)</sup>	A-63421	†	†	†	1	Includes: HUB & DRUM	A-65990	†	†	†	1	
2	SCREW-hex, 12-24 x 3/4	80867	x	x	x	4	BEARING-needle (cage)	64124	†	†	†	1	
3	SCREW-socket	80428	x	x	x	1	RACE-inner	65746	†	†	†	1	
4	KIT-spiked bumper	A-59043	x	x	†	1	WASHER-thrust (outer)	58833	†	†	†	1	
2	Includes: SCREW-hex, 12-24 x 3/4	80867	x	x	†	2	SPROCKET-"Splined" <sup>(16)</sup>						
5	WASHER-lock, #12	83056	x	x	†	2	rim type-7 tooth, 3/8" pitch	OM68210	†	†	†	1	
6	NUT-hex, 12-24	81068	x	x	†	2	7 tooth, .404 pitch	OM10513	†	†	†	1	
7	BRACKET-handle bar	59651-2	x	x	x	1	RACE-inner	55584	x	x	x	1	
	BRACKET-wrap around <sup>(15)</sup>	59651-6	†	†	†	1	WASHER-thrust (inner)	58833	x	x	x	1	
8	COVER-clutch	63051-1	x	x	x	1	CHAIN GUARD	59071	x			1	
8A	COVER-clutch <sup>(18)</sup>	58751-1	x	x	x	1	HOUSING-gear w/pins	A-59078-3	x			1	
9	SHOE-clutch	63052	x	x	x	3	SCREW-pan, 10-32 x 3/8	80579	x	x	x	3	
9A	SHOE-clutch <sup>(18)</sup>	58928-1	x	x	x	3	CAP-filler	58482	x			1	
	SHOE-clutch <sup>(18)</sup>	58928-1		x		6	GASKET	55107	x			1	
10	PLATE-back clutch	63053-1	x	x	x	1	GEAR-ring	58107	x			1	
10A	SPIDER-clutch <sup>(18)</sup>	58927-1	x	x	x	1	BEARING-ball	58120-S	x			1	
11	SPRING-clutch	63034	x	x	x	3	WASHER-thrust	58118-A	x		as req.		
11A	SPRING-clutch <sup>(18)</sup>	55123-C	x	x	x	2	GEAR-sun	58109-1A	x			1	
12	PLATE-guide bar (inner)	58781	x	x	x	1	WASHER-thrust	59081	x			1	
12A	SPRING-guide bar	64448	x		x	1	CARRIER-planet	A-59083	x			1	
13	PLATE-guide bar (outer)	58782	x	x	x	1	RING-retaining	29270	x			6	
14	NUT-hex, 5/16-18	81196	x	x	x	2	GEAR-planet w/bearing	A-59062	x			3	
15	COVER-drivecase	58750-2	x	x	x	1	SHAFT-gear	58953-A	x			3	
16	NUT-lock, 3/8-24	81192	x	x	x	1	BEARING-needle	58952	x			1	
17	WASHER-flat, 3/8	84010-1	x		x	1	SEAL	56134-1	x			1	
18	WASHER-thrust (outer)	58926	x		x	1	GASKET-housing	58947	x			1	
19	SPROCKET & DRUM <sup>(16)</sup>					40	COVER-housing	A-59085	x			1	
	standard-7 tooth, 3/8" pitch	A-59552	x		x	1	Includes: SEAL	58126	x			1	
	optional -8 tooth, 3/8" pitch	A-63346	†		†	1	SCREW-pan, 6-32 x 1/2	80632	x			6	
	7 tooth, .404 pitch	A-59555	†		†	1	SPROCKET <sup>(17)</sup>						
20	Includes: BEARING-needle, New "Splined" type (not shown)	72311	†		†	1	standard-8 tooth, 3/8" pitch	A-59021	x			1	
							optional -8 tooth, .404 pitch	A-59297	†			1	
						44	WASHER-thrust	58949	x			1	
						45	SHAFT & DRUM-clutch	A-58955	x			1	
						46	BEARING-needle	58951	x			1	
						47	WASHER-thrust (phenolic)	59219	x			1	
						48	BUSHING-guide bar	64392	x			2	

## ACCESSORIES

A-24275 KIT-guide bar plate

## NOTES

- Shoulder screw #63407 requires 1/4" holes in fuel tank ("F" drill), and 1/4-20 tapped holes in crankcase. Screw #80867 used to mount early tanks (3/16" holes) to early crankcase with 12-24 threads. See note 2.
- Service replacement Tank has 1/4" mounting holes, requires three 1/4-20 x 3/4 screws (#63407) and mating 1/4-20 tapped holes in crankcase. See note 3.
- Service replacement Crankcase has three 1/4-20 tapped holds for tank mounting screws. Early crankcase with 12-24 threads may be tapped out. See note 2.
- A-59468-B Piston & Pin uses two retaining rings #75120 and #64813. Previously A-59468-A used one retaining ring #75120; earlier Piston & Pins used two #75120 retaining rings. A-59468-B Piston & Pin supersedes and is interchangeable as a complete assembly.
- Cap #A-63246, with reinforcing plate, requires shorter Stud #59891-A.
- Body #A-59895-A requires cylinder with 3 mounting holes (#58706-B1); #A-59895 still required on cylinder with 2 mounting holes. See note 7.
- Service replacement Cylinder #58706-B1 has 3 muffler mounting holes. #A-59895-A Body recommended, #A-59895 can be used. See note 6.
- Units below serial #2071277 use #59272 Crankshaft, #A-58864 Roller set (28), A-58769 Connecting Rod.
- Spark Plug #63547-S (CJ6) must be used with Terminal #A-33055. Units below serial #2159587 use Spark Plug #59558-S (UTS-11P) which requires Cover #58918 and Spring #58919.
- Retainer #63260 required with new plastic valve Seat #63253 which supersedes discontinued aluminum valve seat. Valve springs (#4) and screws (#7) used with aluminum valve seat only.
- Service replacement Carburetor #A-58767-C supplied with idle stop screw and spring (internal adjustments only); when either external adjustment screw #63302 or #59916 is used (see PLUGS below), discard internal adjustment screw and spring. Refer to Carburetor Parts List #23766-C; use Repair Parts Kit #58972, Gasket Set #58971.  
PLUGS-Use #63303 screw plug in tapped hole for index #22, and #63310 screw plug for index # 23 hole.
- Units below serial #2188611 use #58958 Fuel Line.
- Units below serial #2159587 with #59654-S Spark Plug use #A-22808 Combination Wrench. Units above this serial number use #A-23937 Combination Wrench.
- Clutch Ass'y. - For units below serial #2340188 order parts as illustrated or Convert Clutch Ass'y. by ordering #A-63608 Clutch and Cover Ass'y. A-23696 Remover used on units below serial #2340188, #A-23934 used for later units.
- A-63241 requires new Bracket (#59651-6) to replace index #7, and another Bracket (#63045) which mounts on drivecase cover. Screw #80676 attaches drivecase cover bracket to handle bar. Parts available as A-63422 Handle Bar Kit.
- Check type and number of teeth before ordering. "Splined" HUB & DRUM requires one of "Splined" sprockets listed.
- Check number of teeth before ordering.
- Interchangeable when used as a complete assembly.



**HOMELITE**

A **Textron** DIVISION • PORT CHESTER, NEW YORK

Leon's Chainsaw Parts & Repair  
Do Not Sell or Reproduce