

# Homelite®

## PARTS LIST

### SXL-AO CHAIN SAWS



- UT10045 E  
UT10045 F ..... (Old Blue)  
UT10650 B ..... (Int'l)  
UT10650 C ..... (Old Blue - Int'l)  
UT10712 ..... (Old Blue)  
UT10739 ..... (Big Red)

IF YOUR UNIT IS NOT LISTED ABOVE, SEE CHART ON PAGE 2 TO FIND PARTS LIST NUMBER FOR YOUR UNIT.

**PART NO. 19834-A**  
Printed in U.S.A.

**For Models with UT#s, ..... use PARTS LIST NO.**

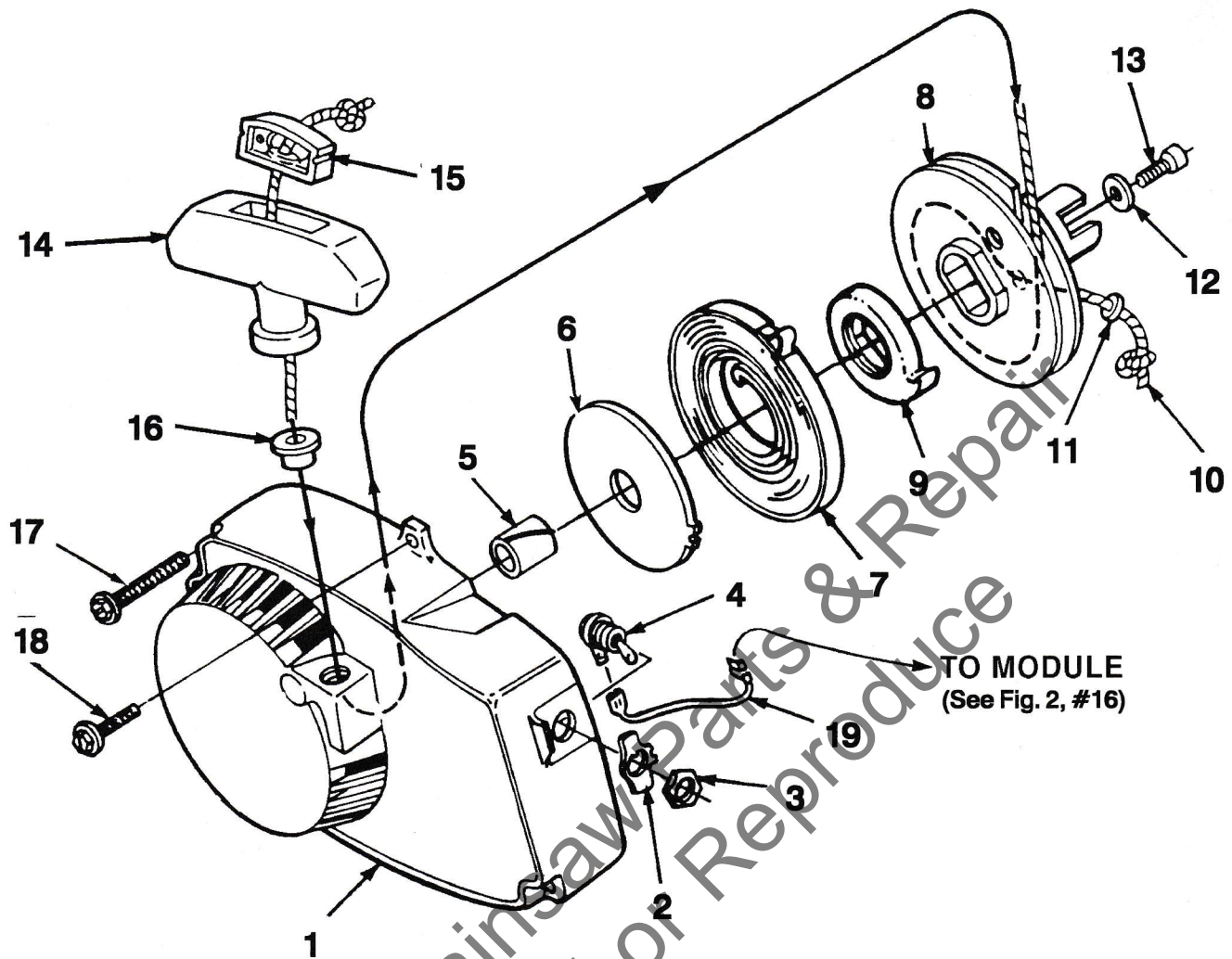
	<b>UT#s</b>	<b>PARTS LIST NOS.</b>
<b>SXL-AO</b>	10045 .....	<b>24228 Rev. 1</b>
	10045 A.....	<b>24228 Rev. 2</b>
	10045 B .....	<b>24228 Rev. 3</b>
	10045 C .....	<b>24228 Rev. 4</b>
	10045 D .....	<b>24228 Rev. 4</b>

**NOTES**

	<b>UT#s</b>	<b>PARTS LIST NOS.</b>

Leon's Chainsaw Parts & Repair  
Do Not Sell or Reproduce

# STARTER



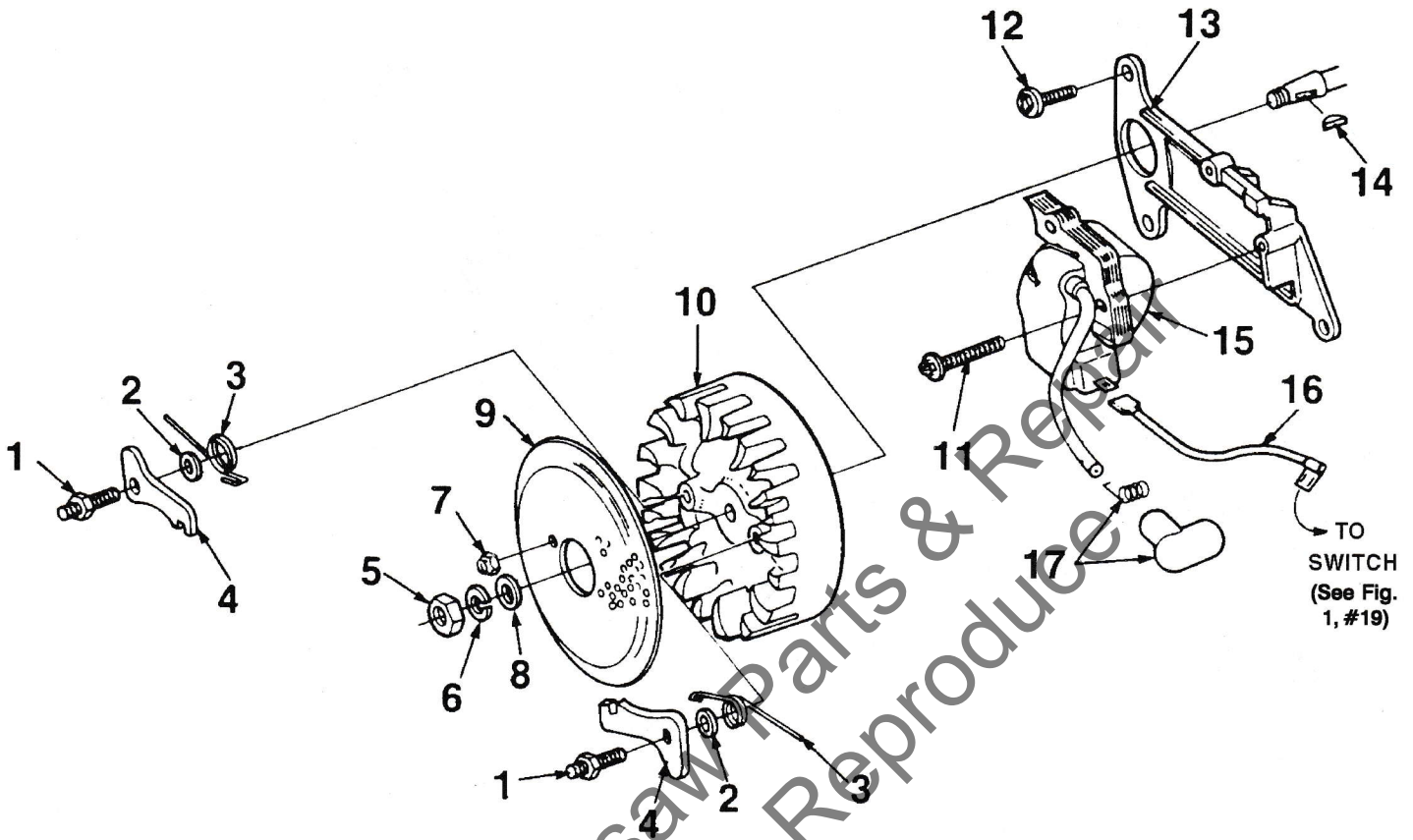
NO.	PART NO.	DESCRIPTION	Qty.
1a	•A 06726 2A	STARTER-Complete (Old Blue)	1
1b	•A 07027	STARTER-Complete	1
2	95231	PLATE- On & Off	1
3	72084 A1	NUT- Hex Locking	1
4	96831	SWITCH & LEAD	1
5	64443	BUSHING- Starter	1
6	59638 B	SHIELD- Spring (Inner)	1
7	A 94842	SPRING- Recoil	1
8	•A 64446	PULLEY- Starter	1
9	94827	BUSHING- Spring	1
10	•A 93875	ROPE- Starter (48")	1
11	93862	WASHER- Flat Nylon	1
12	58763	WASHER- Retainer	1
13	80648	SCREW- Hex (10-32 X 1/2")	1
14	•A 69962 B	GRIP- Starter Rope	1
15	70018 A	INSERT	1
16	67177	BUSHING- Rope	1
17	58963	SCREW- Hex (12-24 X 11/16)	3
18	80899	SCREW- Hex (12-24 X 9/16)	1
19	A 94850	LEAD- Ground (Solid State)	1

• ASSEMBLIES

ITEM NO	TORQUE SPECS		REQUIRED LOCKTITE
	In/Lbs	Nm	
3	18-24	2.0-2.7	
13	40-50	4.5-5.6	
17	70-90	7.9-10.1	... RED 262
18	70-90	7.9-10.1	... RED 262

ALWAYS FURNISH MODEL AND SERIAL NUMBERS WHEN ORDERING PARTS.

# IGNITION



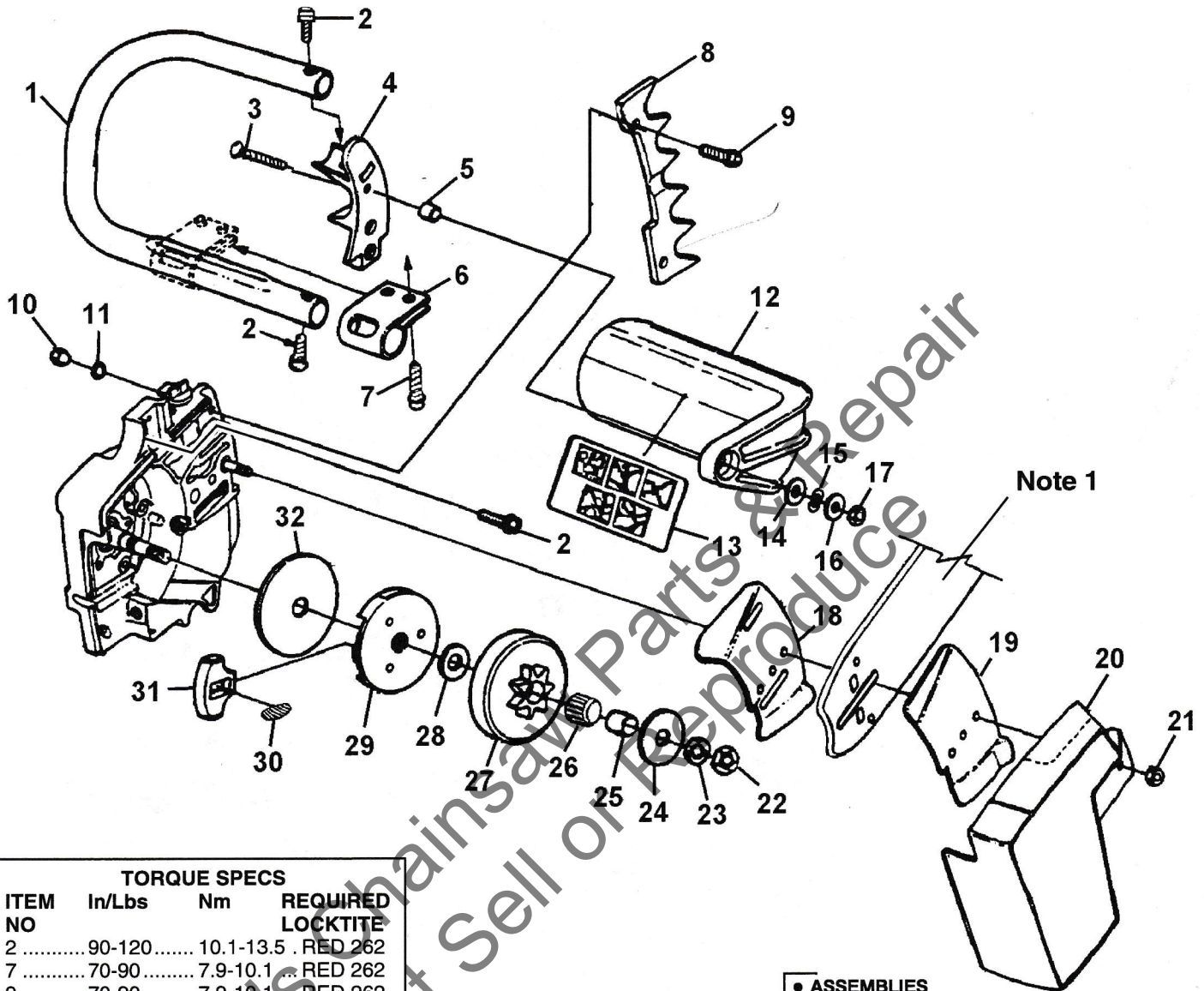
NO.	PART NO.	DESCRIPTION	Qty.
1	58757 E	STUD-Shoulder	2
2	70901	WASHER-Lock	2
3	01101	SPRING-Starter Pawl	2
4	58756 A	PAWL-Starter	2
5	81117	NUT-Hex (5J/16-24)	1
6	83002	WASHER-Lock (5/16)	1
7	81206	NUT-Center Lock (#10-32)	2
8	84056	WASHER-Flat (5/16)	1
9	58765	SCREEN-Starter	1
10	94588	ROTOR-Magneto	1
11	82248	SCREW-Hex Washer Hd. (8-32 X 3/4)	2
12	80899	SCREW-Hex Hd. (12-24 X 9/16)	3
13	94326 1	PLATE-Ignition Coil Mtg. (Solid State)	1
14	75078	KEY-Woodruff	1
15	94589 AS	MODULE & CORE	1
16	A 94850	LEAD-Ground (Solid State)	1
17	A 33055	TERMINAL-High Tension	1

TORQUE SPECS			
ITEM NO	In/Lbs	Nm	REQUIRED LOCKTITE
1	70-90	7.9-10.1	... RED 262
5	150-200	16.9-22.5	
7	40-50	4.5-5.6	
11	15-20	1.6-2.2	... BLUE 242
12	70-90	7.9-10.1	... RED 262

• ASSEMBLIES

ALWAYS FURNISH MODEL AND SERIAL NUMBERS WHEN ORDERING PARTS.

# HANDLE and CLUTCH



Note 1

• ASSEMBLIES

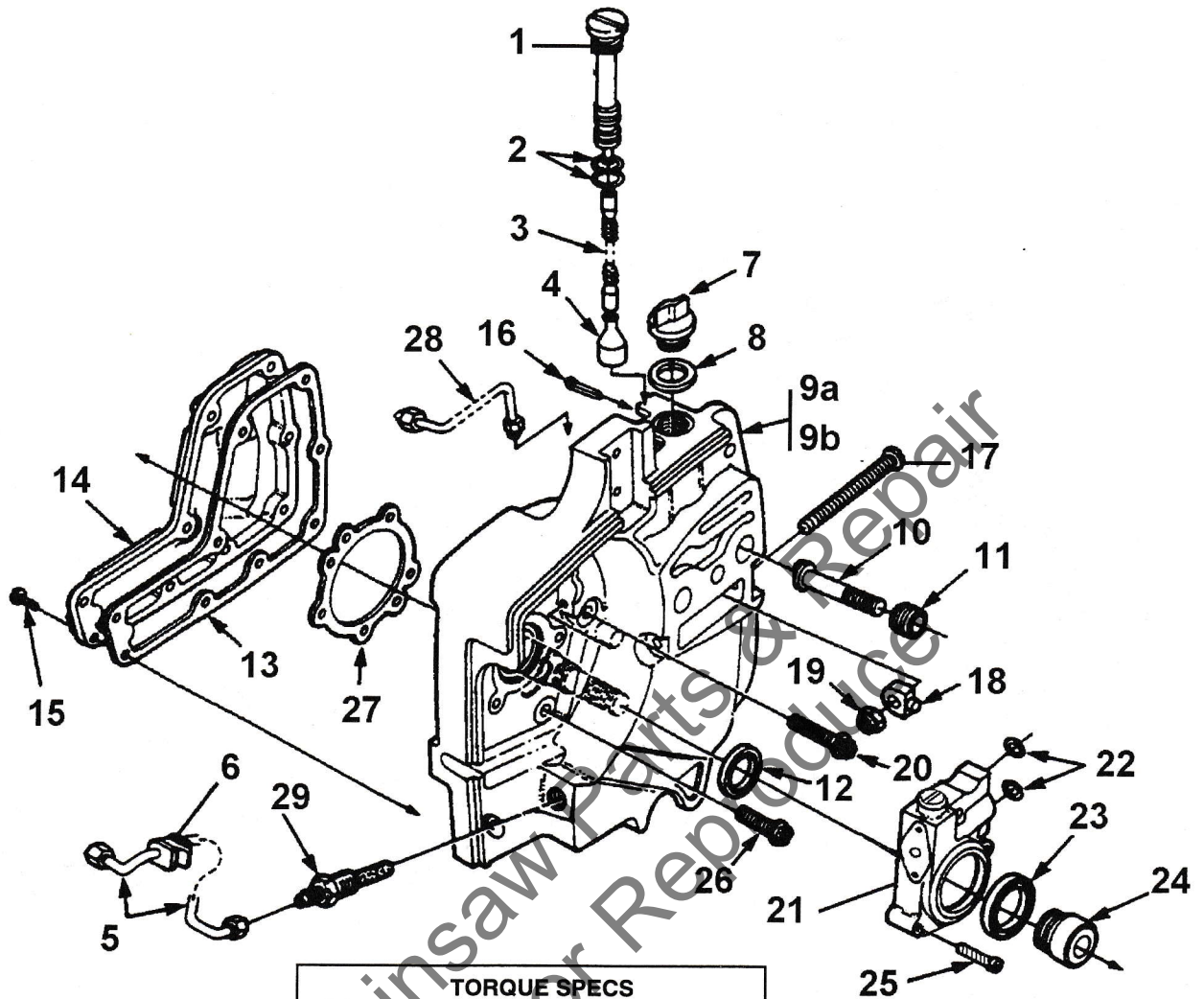
TORQUE SPECS			
ITEM NO	In/Lbs	Nm	REQUIRED LOCKTITE
2	90-120	10.1-13.5	RED 262
7	70-90	7.9-10.1	RED 262
9	70-90	7.9-10.1	RED 262

NO.	PART NO.	DESCRIPTION	Qty.	NO.	PART NO.	DESCRIPTION	Qty.
1	A 98080	HANDLE BAR-Flush Cut	1	18	•A 70618	GUIDE BAR PLATE KIT	1
2	80428 1	SCREW-Soc Hd. (1/4-20 X 1")	1	19	70399	PLATE-Guide Bar (Inner)	1
3	82223	SCREW-Flat Hd. (12-24 X 1 1/4")	4	20a	70400	PLATE-Guide Bar (Outer)	1
4a	59651 19	BRACKET-Handle Bar	1	20a	58750 26	COVER-Drive Case	1
4b	59651 18	BRACKET-Handle Bar (Old Blue)	1	20b	58750 25	COVER-Drive Case (Old Blue)	1
5	95937	SPACER	1	21	81089 2	NUT-Hex (3/8-16)	1
6	63291 A	CLAMP-Handle Bar	1	22	81124 A	NUT-Lock (3/8-24)	1
7	80867	SCREW-Mach. Hex Hd. (12-24 X 3/4")	4	23	83018	WASHER-Lock (3/8")	1
8	•A 59043	BUMPER SPIKE KIT (Accessory)	1	24	65064	WASHER-Thrust (Outer)	1
9	80867	SCREW-Hex (12-24 X 3/4")	2	25	65746 B	RACE-Inner	1
10	81068	NUT-Hex (12-24)	2	26	64124	BEARING-Roller	1
11	70901	WASHER-Lock (#12)	2	27	A 95459	SPROCKET & DRUM (7 Tooth Std)	1
12	•A 95088 A	HAND GUARD	1	28	58833	WASHER-Thrust (Inner)	1
13	02661	DECAL-Hand Guard	1	29	•A 69480 C	CLUTCH ASSEMBLY	1
14	84065	WASHER-Flat	1	30	65760 1B	PLATE-Clutch	1
15	96757	WASHER-Spring Wave	1	31	67053	SPRING-Clutch	3
16	95935	WASHER-(5/16)	1	32	69461	SHOE-Clutch	3
17	81225	NUT (12-24)	1		95054	COVER-Clutch	1

Note 1 - See Page 9 for Guide Bar and Chain Numbers.

ALWAYS FURNISH MODEL AND SERIAL NUMBERS WHEN ORDERING PARTS.

# OIL PUMP and DRIVECASE



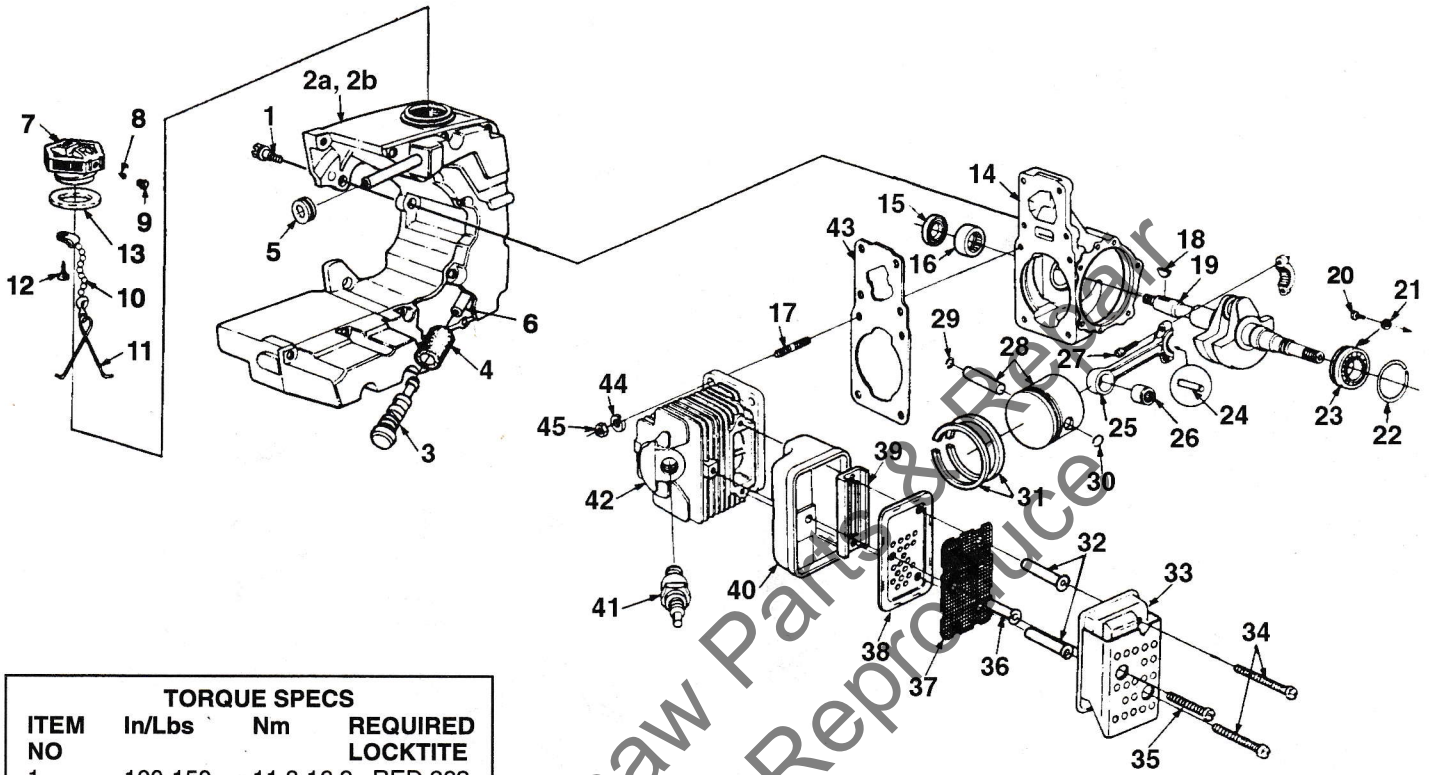
TORQUE SPECS			
ITEM NO	In/Lbs	Nm	REQUIRED LOCKTITE
11	150-180	16.9-20.3	
15	20-30	2.2-3.3	
20	70-90	7.9-10.1	RED 262
25	15-20	1.6-2.2	BLUE 242
26	70-90	7.9-10.1	RED 262

• ASSEMBLIES

NO.	PART NO.	DESCRIPTION	Qty.	NO.	PART NO.	DESCRIPTION	Qty.
1	•A 69371	OIL FILTER ASSEMBLY	1	17	63225	SCREW-Guide Bar Adjusting	1
	59325 2	TUBE-Oil Line	1	18	93039	PIN-Bar Adjusting	1
2	59765	"O" RING	1	19	81204	NUT-Lock (1/4-20)	1
3	70309 09	TUBING-Rubber (2 1/4")	1	20	80864	SCREW-Hex (12-24 X 1")	1
4	A 68593	FILTER-Oil	1	21	•A 00007 A	PUMP-Automatic Oil	1
5	•A 59819	LINE-Oil	1	22	59074	"O" RING	2
6	59794	GROMMET	1	23	59926	SEAL-Felt	1
7	•A 63717 C	CAP-Filler Oil	1	24	00001	WORM GEAR, OIL PUMP	1
8	56607	GASKET	1	25	82248	SCREW-Fil (8-32 X 3/4")	3
9a	A 08896	DRIVECASE ASSEMBLY(Old Blue)	1	26	80899	SCREW-Hex (12-24 X 9/16)	4
9b	•A 59930 J	DRIVECASE ASSEMBLY	1	27	63355	GASKET-Crankcase	1
10	67475	STUD-Guide Bar (3/8)	2	28	A 59806	LINE-Oil (Discharge)	1
11	67476	INSERT-Threaded	2	29	A 59804 A	FILTER-Oil (Manual Oil)	1
12	58308 B	SEAL	1				
13	59710	GASKET-Oil Reservoir	1				
14	96453 2	COVER-Oil Reservoir	1				
15	82564	SCREW-Thread Form. (6 X 1/2")	9				
	80742	SCREW-Set (Not Shown)	1				
16	86301	PIN-Cotter	1				

ALWAYS FURNISH MODEL AND SERIAL NUMBERS WHEN ORDERING PARTS.

# ENGINE and FUEL TANK



TORQUE SPECS			
ITEM NO	In/Lbs	Nm	REQUIRED LOCKTITE
1	100-150	11.3-16.9	RED 262
20	40-50	4.5-5.6	RED 262
27	65-70	7.3-7.9	
34	70-90	7.9-10.1	
35	70-90	7.9-10.1	

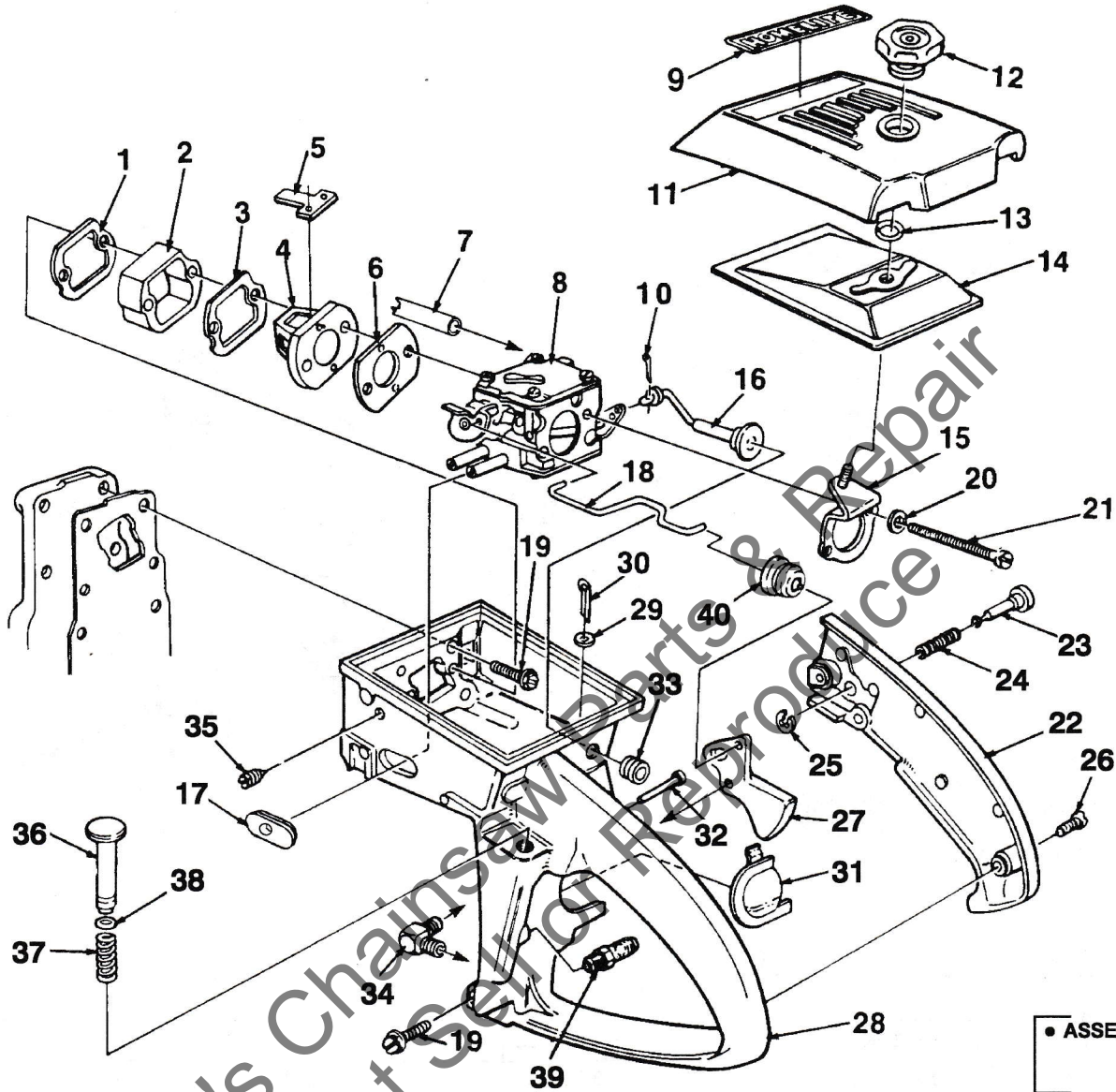
• ASSEMBLIES

NO.	PART NO.	DESCRIPTION	Qty.
1	63407	SCREW-Shoulder	3
2a	A 08895	FUEL TANK (Old blue)	1
2b	•A 68345 B	FUEL TANK	1
3	•A 69923	FILTER-Fuel	1
4	64083	FELT FILTER	1
5	68049	GROMMET	1
6	70310 37	TUBING-Rubber (9 1/4")	1
7	•A 69499 1	CAP-Fuel Filler	1
8	69451	VALVE-Check	1
9	69454	FILTER-Fuel Cap	1
10	69502	CHAIN-Bead	1
11	96535	RETAINER	1
12	82256 A	SCREW-Pan Hd. (#6 X 1/4")	1
13	69501	GASKET-Fuel Filler Cap	1
14	•A 65736	CRANKCASE	1
15	12282 A	SEAL	1
16	58956	BEARING	1
17	96127 A	STUD-Cylinder	4
18	75078	KEY-Woodruff	1
19	93595	CRANKSHAFT	1
20	70306	SCREW-Torx	2
21	59705	WASHER-Lock	2
22	58319 A	RING-Retaining	2
23	58190	BEARING-Ball	2

NO.	PART NO.	DESCRIPTION	Qty.
24	A 69054	ROLLER SET (31)	1
25	•A 63477 A	ROD-Connecting	1
26	93369	BEARING	1
27	69919	SCREW-Cap Soc. Hd.	2
28	•A 68438	PISTON & PIN	1
29	75120	RING-Retaining	1
30	64813	RING-Retaining	1
31	59436 1A	PISTON RING	2
B	•A 94219 A	MUFFLER ASSEMBLY	1
32	93983 01	SPACER-Muffler	2
33	A 95988	CAP-Muffler & Shield	1
34	94128	SCREW-Hex Hd. (12-24 X 2 1/4")	2
35	94129	SCREW-Hex Hd. (12-24 X 1 7/8")	1
36	93983 02	SPACER-Muffler	1
37	93979	SCREEN-Spark Arrestor	1
38	93980	BAFFLE-Muffler	1
39	94133 A	PLATE-Muffler	1
40	93981	BODY-Muffler	1
41	63547 S	SPARK PLUG (CJ8)	1
42	•A 69714	CYLINDER	1
43	59771	GASKET - Cylinder	1
44	83061	WASHER-Lock (1/4")	4
45	96212	NUT (1/4 - 28)	4

ALWAYS FURNISH MODEL AND SERIAL NUMBERS WHEN ORDERING PARTS.

# THROTTLE HANDLE and CARBURETOR



• ASSEMBLIES

NO.	PART NO.	DESCRIPTION	Qty.	NO.	PART NO.	DESCRIPTION	Qty.
1	59274	GASKET-Spacer	1	22b	• A 06727	COVER-Throttle Handle	1
2	59718	SPACER-Heat Dam	1		67752	BUSHING-Pin (Not Shown)	1
3	63260 A	RETAINER-Reed Valve	1	23	95671	PIN-Throttle Latch	1
4	63253	SEAT-Reed Valve	1	24	58405	SPRING-Throttle Latch	1
5	59678 B	VALVE-Reed	4	25	58409	RING-Retaining	1
6	59722	GASKET-Carburetor	1	26	80560	SCREW-Pan (8-32 X 1/2")	2
7	70310 37	LINE-Fuel (9 1/4")	1	27	58859 A	TRIGGER-Throttle	1
8	A 68371 C	CARBURETOR-Walbro	1	28a	A 06729 2	THROTTLE HANDLE (Old blue) (NOTE 3)	1
	A 07048	CARBURETOR-Zama	1	28b	• A 06729	THROTTLE HANDLE	1
9	06738	LABEL-Homelite®	1	29	63290	WASHER-Felt	1
10	86324	PIN-Cotter	1	30	86301	PIN-Cotter	1
11	58773 3A	COVER-Air Filter	1	31	93209	SHIELD-Spark Plug	1
12	A 65272	NUT-Air Filter Cover	1	32	94142	PIN, Oil Plunger Retaining	1
13	58319 A	RING-Retaining	1	33	A 59011	VALVE-Check	1
14	63589 A	ELEMENT-Air Filter	1	34	63302 B	SCREW-Idle	1
15	A 59822 B	BRACKET-Mounting	1	35	58362	GROMMET KIT	1
16	68130 1	ROD-Choke	1	36	• A 93783	PLUNGER-Spring	1
17	A 07047	GROMMET KIT	1	37	59293	SPRING-Compression	1
18	59763	ROD-Throttle	1	38	74388	"O" RING	1
19	80891	SCREW-Hex (12-24 X 7/8")	5	39	A 59818	VALVE-Check	1
20	83046	WASHER-Lock (#10)	2	40	67634	BOOT- Throttle Rod	1
21	80921	SCREW-Hex (10-32 X 2 11/16")	2				
22a	A 06727 2	COVER-Throttle Handle (Old Blue) (NOTE 2)	1				

NOTE 2 - A06727 2 Includes the same items as A06727  
 NOTE 3 - A06729 2 Includes the same items as A06729



# TOOLS & ACCESSORIES

## TOOLS FOR THE SXL-AO

ANVIL - Crankshaft .....	23846 4
PLUG - Seal assembly - Drive & Crankcase .....	23758
PLUG - Seal installation - Drivecase assembly .....	23845
PULLER - Magneto Rotor .....	A 24290
SLEEVE - Seal protecting .....	23844
SLEEVE - Seal protecting - Crankcase .....	23759
SLEEVE - Seal installation - Drive & Crankcase .....	23800
WRENCH - Spanner to assemble & disassemble Clutch PIN .....	A 23934 23954
WRENCH - Combination .....	A 24824
WRENCH - Insert .....	A 24322
TOOL - Clutch removal (for Clutch Conversion Kit) .....	A 17146
BIT - Driver torx 1/4" shank .....	24982 01
BIT - Driver torx 5/16" shank .....	24982 02

## ACCESSORIES

QTY.

CLUTCH CONVERSION KIT .....	A 96745	.. 1
Includes:		
SHOE - Clutch .....	A 93632 B	.. 3
SPIDER - Clutch .....	93639	.. 3
SPRING - Clutch .....	93814 A	.. 3
SPROCKET & DRUM .....	A 95465	.. 1
THRUST WASHER .....	93643	.. 1
THRUST WASHER .....	93650	.. 1
THRUST WASHER .....	65064	.. 1
MANUAL OIL PUMP KIT .....	A 65868	.. 1
(Prior to S/N 50440501)		
Includes:		
BUTTON .....	57289 1	.. 1
OIL LINE .....	A 59819	.. 1
Includes:		
GROMMET .....	59794	.. 1
VALVE - Check .....	A 59818	.. 1
FILTER - Oil Intake .....	A 59804 A	.. 1
PLUNGER .....	A 57834 10	.. 1
Includes:		
"O" RING .....	74388	.. 1
"O" RING .....	59074	.. 1
SPRING .....	59293	.. 1
SAFE-T-TIP® KIT (Standard) .....	A 70790 B	.. 1
Includes:		
SCREW .....	82335	.. 1
CARRY CASE .....	A 01502 A	.. 1
REEL - Starting Rope (250 Ft. ) (#5) .....	57084 1	.. 1
INSERT KIT (for Drivecase & Barstuds) .....	A 70370 A	.. 1
TUBING - Rubber (10 Ft.) (Fuel & Oil) ...	70310 99	.. 1
TUBING - Rubber (100 Ft.) (Fuel & Oil)..	70309 98	.. 1
GUIDE BARS		
16" Power Tip Bar .....	PT 16381 O5	
20" Power Tip Bar .....	PT 20381 O5	
24" Replaceable Tip .....	SP 24381 H5	
CHAIN		
16" 38-MD50-59 HSV .....	J1-M7259-AH	
20" 38-MD50-70 HSV .....	J1-M7270-AH	
24" 38-MD50-81 HSV .....	J1-M7281-AH	

Leon's Chainsaw Parts & Repair  
Do Not Sell or Reproduce

## **CUSTOMER ASSISTANCE**

FOR THE LOCATION OF YOUR NEAREST HOMELITE SERVICING DEALER  
IN THE UNITED STATES, PUERTO RICO, AND THE VIRGIN ISLANDS,

**CALL: 1-800-242-4672**

### **HEADQUARTERS**

**Homelite, Inc.**  
P.O. BOX 7047  
CHARLOTTE, N.C. 28241

### **OVERSEAS OFFICES**

#### **EUROPE, AFRICA & MIDDLE-EAST**

**Homelite Netherlands B.V.**  
A Deere & Company Affiliate  
Haverstraat 24  
2153 GB Nieuw Vennepe  
The Netherlands

#### **FRANCE**

**Homelite Atlantic SARL**  
Groupe Deere & Co.  
BP 7011  
95050 Cergy Pontoise Cedex  
France

#### **AUSTRALIA**

**Homelite Pacific Ltd.**  
A Deere & Company Affiliate  
ACN 008 683 538  
94 Rushdale Street  
P. O. Box 555 MDA  
Knoxfield Vic 3180  
Australia

### **CANADIAN OFFICES**

#### **Homelite Canada Limited**

#### **Homelite Canada Limitée**

A Deere & Company Affiliate /  
Une Filiale de Deere & Company  
1850-55e/th Avenue  
Lachine, Québec, Canada H8T 3J5  
1-800-363-5715

UNIT 212-214, 590 Ebury Place  
New Westminster, B.C. V3M 6K7  
1-800-667-3128

20-D Voyager Court South  
Etobicoke, Ontario M9W 5M7  
1-800-465-2249

**Homelite** inc.  
A Subsidiary of Deere & Company