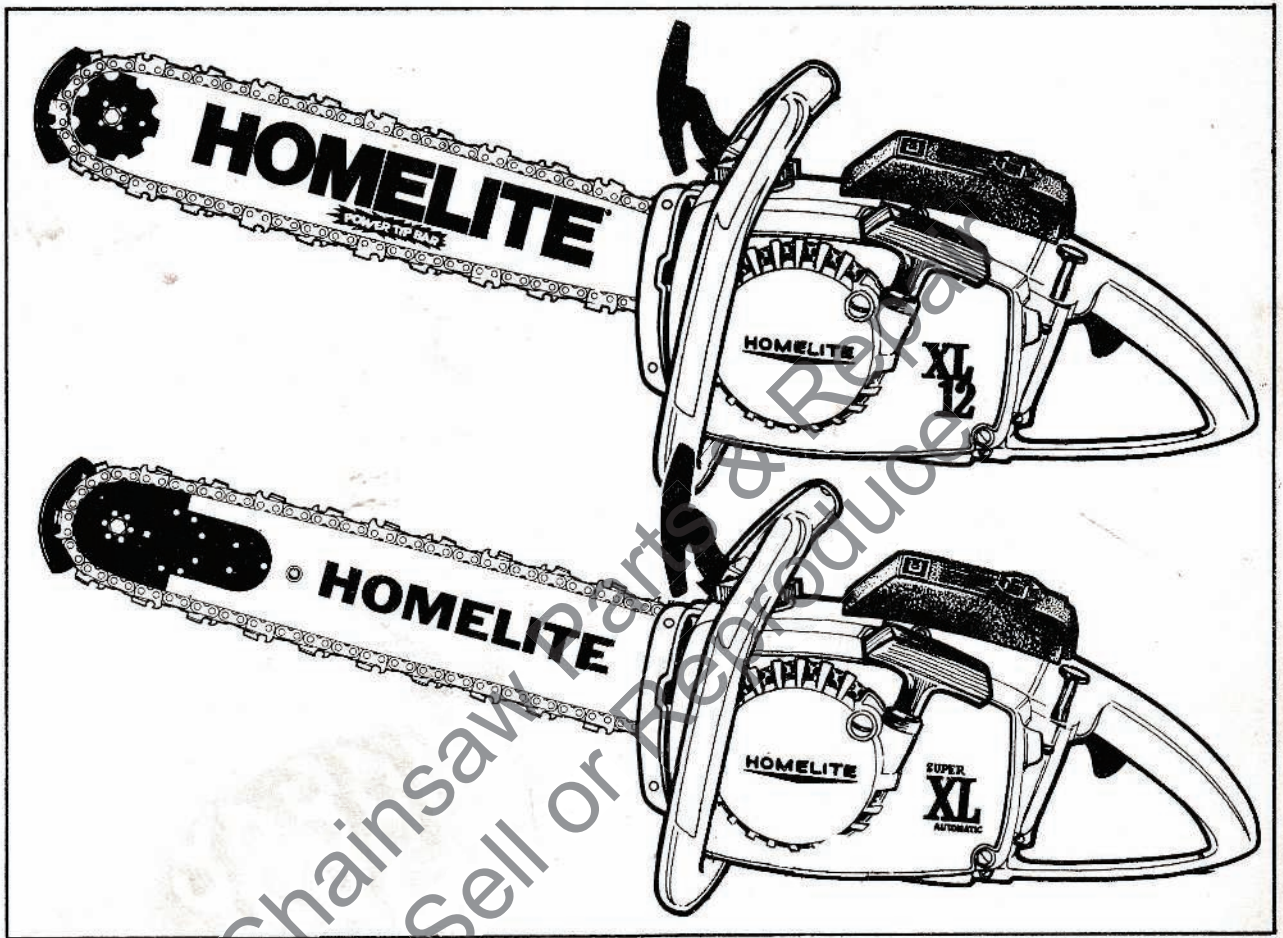


650600

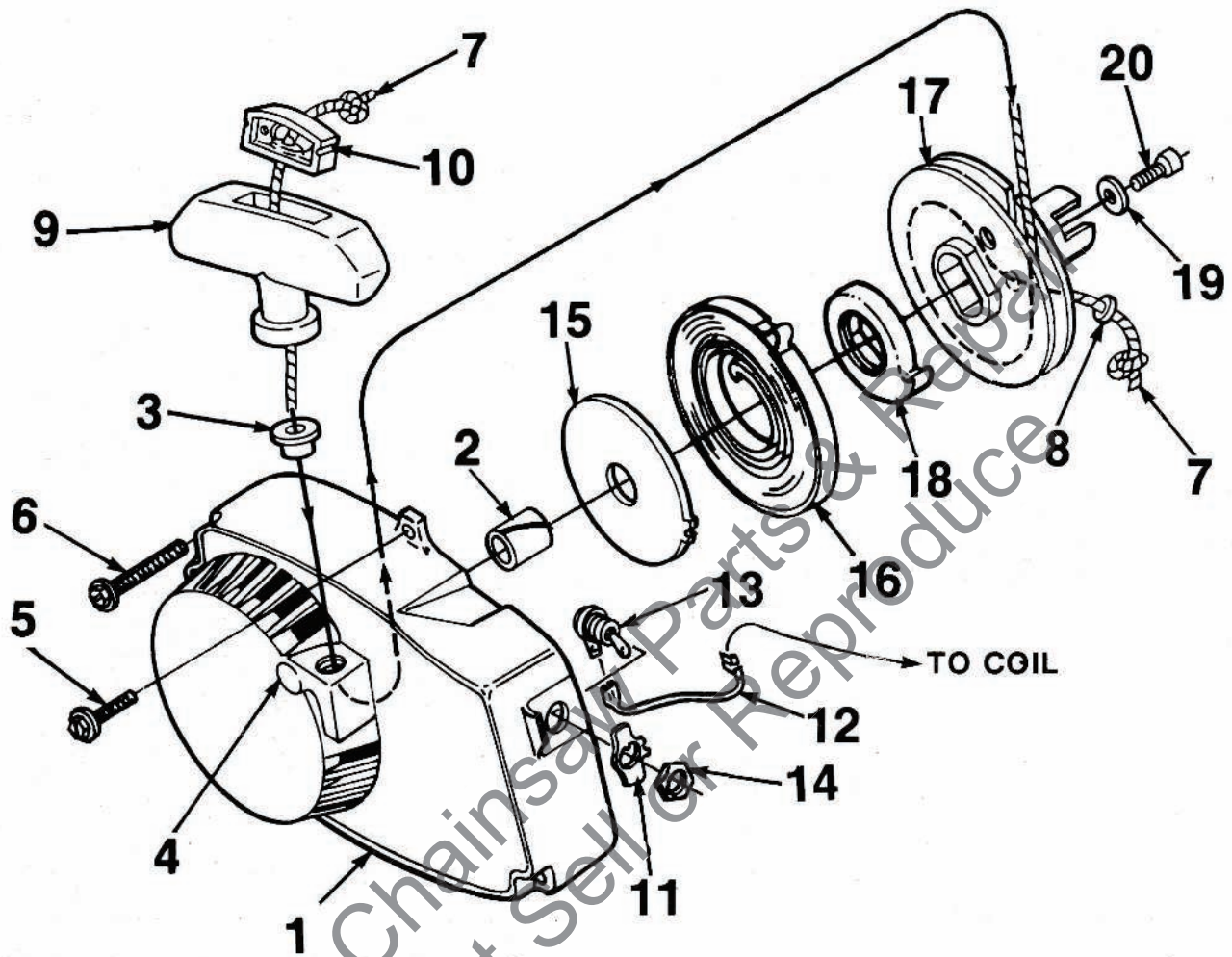


PARTS LIST

HOMELITE®
XL-12 WITH PYRAMID
REED SYSTEM
AND
SXL-AO
CHAIN SAWS

XL-12/SXL-AO

FIGURE 1

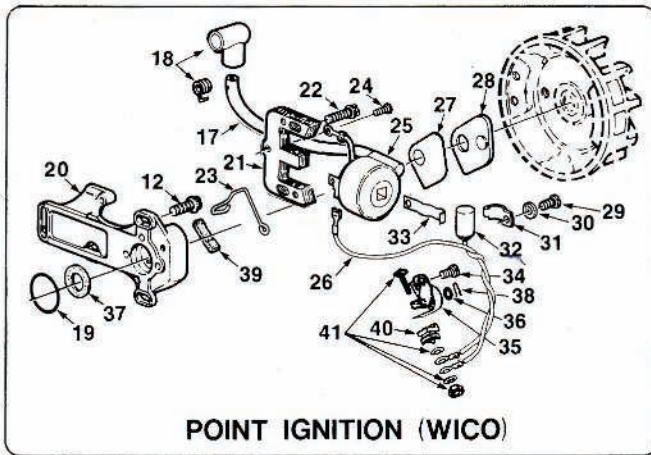


No.	Description	Part No.	XL-12	SXL-AO	Qty.	No.	Description	Part No.	XL-12	SXL-AO	Qty.
1	HOUSING- Fan Includes:	A-64518	x	x	1	12	LEAD- Ground (Solid State)	A-94850	x	x	1
2	BUSHING- Starter	64443	x	x	1		LEAD- Ground (Point Ignition)	A-59031	x	x	1
3	BUSHING- Rope	67177	x	x	1	13	SWITCH	A-57650-3A	x	x	1
4	DRIVE STUD	59067	x	x	1		Includes:				
5	SCREW- Hex, 12-24 x 9/16	80899	x	x	1	14	NUT	72084-A1	x	x	1
6	SCREW- Hex, 12-24 x 1 11/16	58963	x	x	3	15	SHIELD- Spring (Inner)	59638-B	x	x	1
7	ROPE- Starter 48" long #5 Includes:	A-93875	x	x	1	16	SPRING- Recoil (Note 1)	A-94842	x	x	1
8	WASHER- Flat (nylon)	93862	x	x	1	17	PULLEY- Starter	A-64446	x	x	1
9	GRIP- Starter rope Includes:	A-69962-B	x	x	1		Includes:				
10	INSERT	70018-A	x	x	1	18	BUSHING- Spring	94827	x	x	1
11	PLATE "ON-OFF"	95231	x	x	1	19	WASHER- Retaining	58763	x	x	1
						20	SCREW- Hex, 10-32 x 1/2	80648	x	x	1

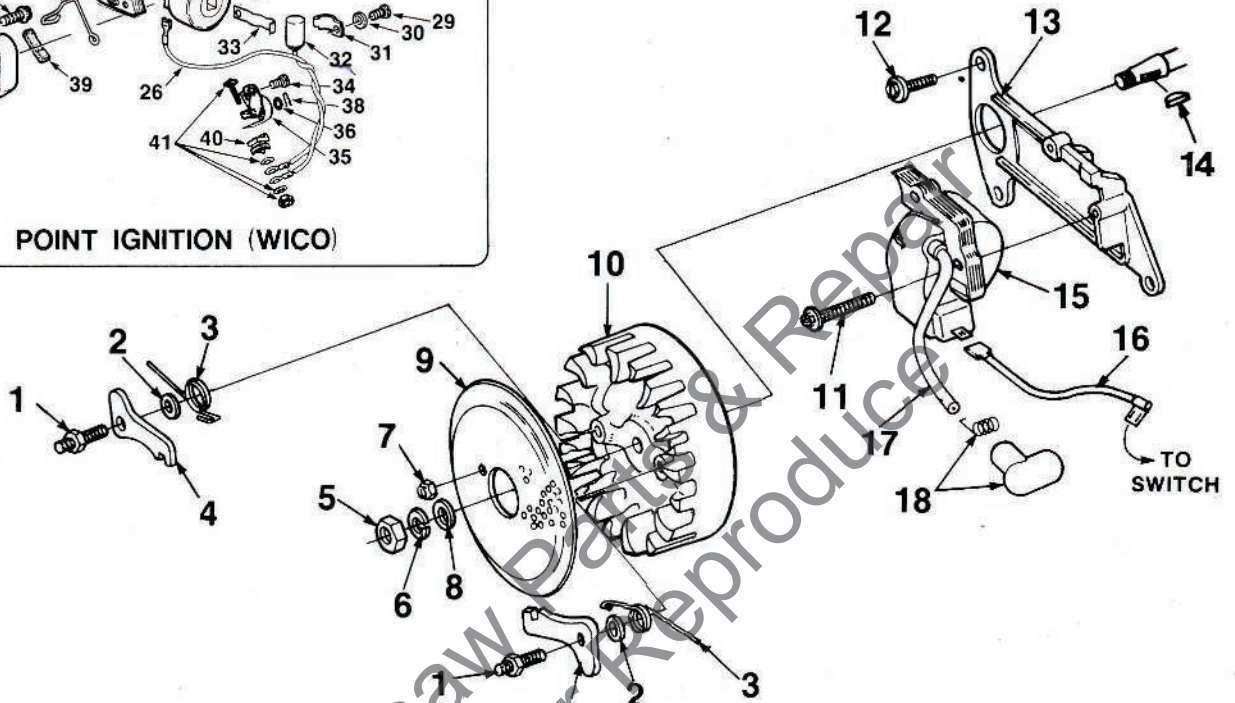
NOTE 1- Units prior to lot #0092 using non containerized spring, require shield 59639-A.

XL-12/SXL-AO

FIGURE 2



POINT IGNITION (WICO)

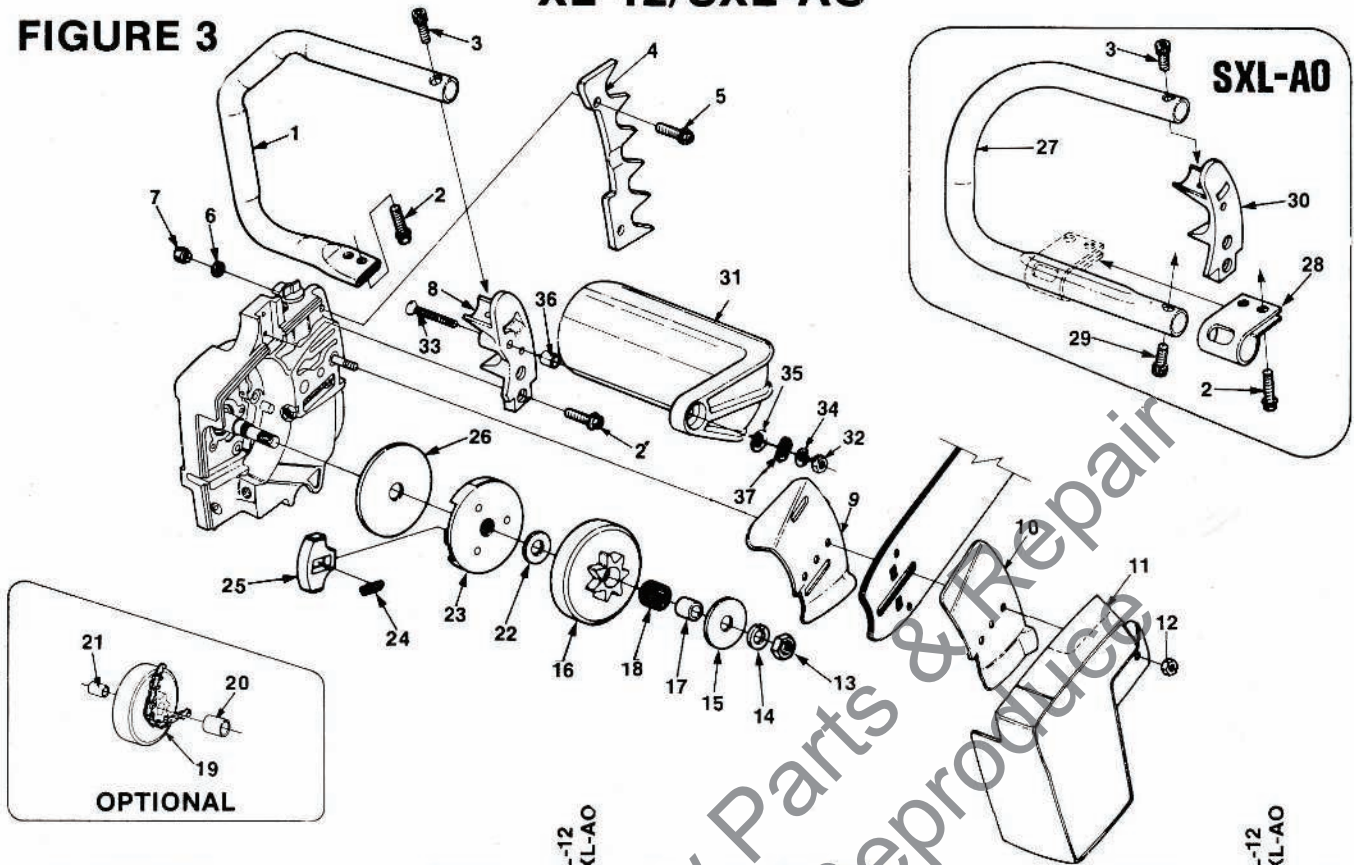


No.	Description	Part No.	XL-12	SXL-AO	Qty.	No.	Description	Part No.	XL-12	SXL-AO	Qty.
1	STUD- Shoulder	58757-E	x	x	2	25	COIL- With lead (Point Ignition)	A-94325	x	x	1
2	WASHER- Lock	70901	x	x	2		Includes:				
3	SPRING- Starter pawl	65375-2	x	x	2	26	LEAD	93095	x	x	1
4	PAWL- Starter	58756	x	x	2	27	GASKET- Breaker box cover (Point Ignition)	58810	x	x	1
5	NUT- Hex (5/16-24)	81117	x	x	1	28	COVER- Breaker box (Point Ignition)	58811	x	x	1
6	WASHER- Lock (5/16)	83002	x	x	1	29	SCREW- Hd. (8-32 x 5/16) (Point Ignition)	30261	x	x	1
7	NUT- Center lock (#10-32)	81206	x	x	2		Washer- Point set (Point Ignition)	83060	x	x	2
8	WASHER- Flat (5/16)	84056	x	x	1	31	CLAMP- Condenser	59622	x	x	1
9	SCREEN- Starter	58765	x	x	1	32	CONDENSER (Point Ignition)	63250-A	x	x	1
10	ROTOR- Magneto	70639	x	x	1	33	CLIP- Coil retaining (Point Ignition)	63726	x	x	1
11	SCREW- Hex washer hd. (8-32 x 3/4)	82248	x	x	2	34	SCREW- Contact plate (Point Ignition)	76421	x	x	1
12	SCREW- Hex hd. (12-24 x 9/16)	80899	x	x	3	35	POINTS- Breaker (Points Ignition)	A-58914-A	x	x	1
13	PLATE- Ignition coil mtg. (Solid State)	94326-1	x	x	1		Includes:				
14	KEY- Rotor (woodruff)	75078	x	x	1	36	WASHER-Plain	28028	x	x	A/R
15	MODULE & CORE (Solid State)	94605	x	x	1	37	SEAL- Felt	59760	x	x	1
16	LEAD- Ground (Solid State)	A-94850	x	x	1	38	CLIP	28008	x	x	1
	LEAD- Ground (Point Ignition)	A-59031	x	x	1	39	CAM- Felt		x	x	1
17	LEAD- High tension	58966	x	x	1	40	BLOCK- Terminal (Point Ignition)	A-68162	x	x	1
18	TERMINAL- High tension	A-33055	x	x	1		Includes:				
19	GASKET- Stator (Point Ignition)	59538	x	x	1	41	NUT- Connection stud	93099	x	x	1
20	BOX- Breaker (Point Ignition)	A-94556	x	x	1						
	Includes:										
21	CORE	93098	x	x	1						
22	SCREW- Hex washer hd. (8-32 x 3/4)	82248	x	x	2						
23	CLIP- Breaker box cover (Point Ignition)	76413	x	x	1						
24	SCREW- Terminal (Point Ignition)	64090	x	x	1						

ALWAYS FURNISH MODEL AND SERIAL NUMBER WHEN ORDERING PARTS.

XL-12/SXL-AO

FIGURE 3



No.	Description	Part No.	XL-12	SXL-AO	Qty.	No.	Description	Part No.	XL-12	SXL-AO	Qty.
1	HANDLE BAR- Flush cut	A-58793-B	x	x	1	26	COVER- Clutch	95054	x	x	1
2	SCREW 12-24 x 3/4	80867	x	x	4	27	HANDLE BAR- Flush cut	A-70365	x	x	1
3	SCREW- Socket hd. 1/4-20x1	80428-1	x	x	1	Includes:					
4	BUMPER KIT- Spiked (Accessory)	A-59043	x	x	1	28	CLAMP	63291-A	x	x	1
Includes:						29	SCREW- Soc hd. 1/4-20	80428-1	x	x	1
5	SCREW- Hex, 12/24 x 3/4	80867	x	x	2	30	BRACKET- Handle bar (Note 1)	59651-11	x	x	1
6	WASHER- Lock, #12	70901	x	x	2	ACCESSORIES NOT SHOWN					
7	NUT- Hex, 12-24	81068	x	x	2	HANDLE BAR- Wrap around (Accessory) (Note 1)					
8	BRACKET- Handle Bar KIT- Guide bar plate	A-70618	x	x	1	Includes:					
Includes:						HANDLE BAR A-63421 x 1					
9	PLATE- Guide bar (Inner)	70399	x	x	1	BRACKET- Handle bar 59651-6B x 1					
10	PLATE- Guide bar (Outer)	70400	x	x	1	BRACKET- Handle bar mtg. 63405 x 1					
11	COVER- Drivecase	58750-16	x	x	1	SCREW- Hex hd. 12-24 x 5/8 80676 x 1					
12	NUT- Hex, 3/8-16	81089-2	x	x	2	HUB & DRUM- "Splined" A-65990 x 1					
13	NUT- Lock 3/8-24	81124	x	x	1	(use with index #19,17,18,20,21, and rim sprocket)					
14	WASHER- Lock 3/8	83018	x	x	1	SPROCKET- Splined rim typed 3/8" pitch, 7 tooth (Note 2) 63284 x x 1					
15	WASHER- Thrust (Outer)	65064	x	x	1	.404 pitch, 7 tooth (Note 2) 63285 x x 1					
16	SPROCKET & DRUM- 3/8 7 tooth (Std.) (Note 2)	A-95620	x	x	1	31	GUARD- Hand	95898	x	x	1
17	RACE- Inner	65746-B	x	x	1	32	NUT (12-24)	81225	x	x	1
18	BEARING- Roller	64124	x	x	1	33	SCREW (12-24 x 1 1/4)	82223	x	x	4
19	SPROCKET & DRUM- (Opt.) 3/8" pitch, 8 tooth .404 pitch, 7 tooth	A-63346	x	x	1	34	WASHER (5/16)	95935	x	x	1
Includes:						35	WASHER	95936	x	x	1
20	BEARING- Needle (Note 3)	72311	x	x	1	36	SPACER	95937	x	x	1
21	RACE- Inner (Note 3)	55584	x	x	1	37	WASHER- Spring wave	96757	x	x	1
22	WASHER- Thrust (Inner) CLUTCH & COVER	A-69480-C	x	x	1	NOTE 1- A-63421 Handle Bar requires 59651-6B Bracket to replace index #29, and another 63405 bracket which mounts on drivecase cover. 80676 screw attaches drivecase cover bracket to handle bar.					
Includes:						NOTE 2- Check type and number of teeth before ordering. "Splined" hub and drum requires one of the "splined" sprockets listed.					
23	PLATE- Clutch	65760-1B	x	x	1	NOTE 3- Race #55584 required with #72311 needle bearing.					
24	SPRING- Clutch	67053	x	x	3						
25	SHOE- Clutch	69461	x	x	3						

XL-12/SXL-AO

FIGURE 4

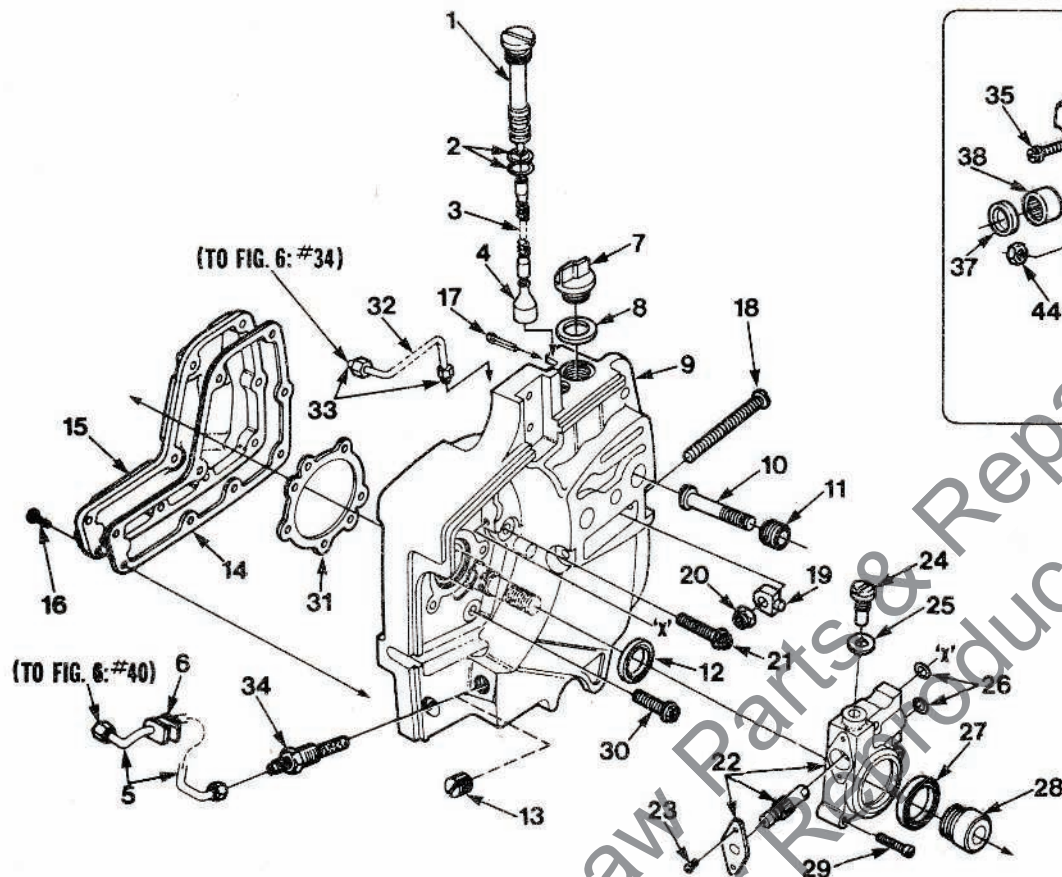
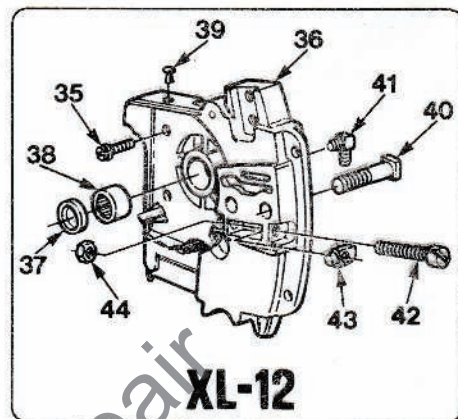


FIGURE 4A

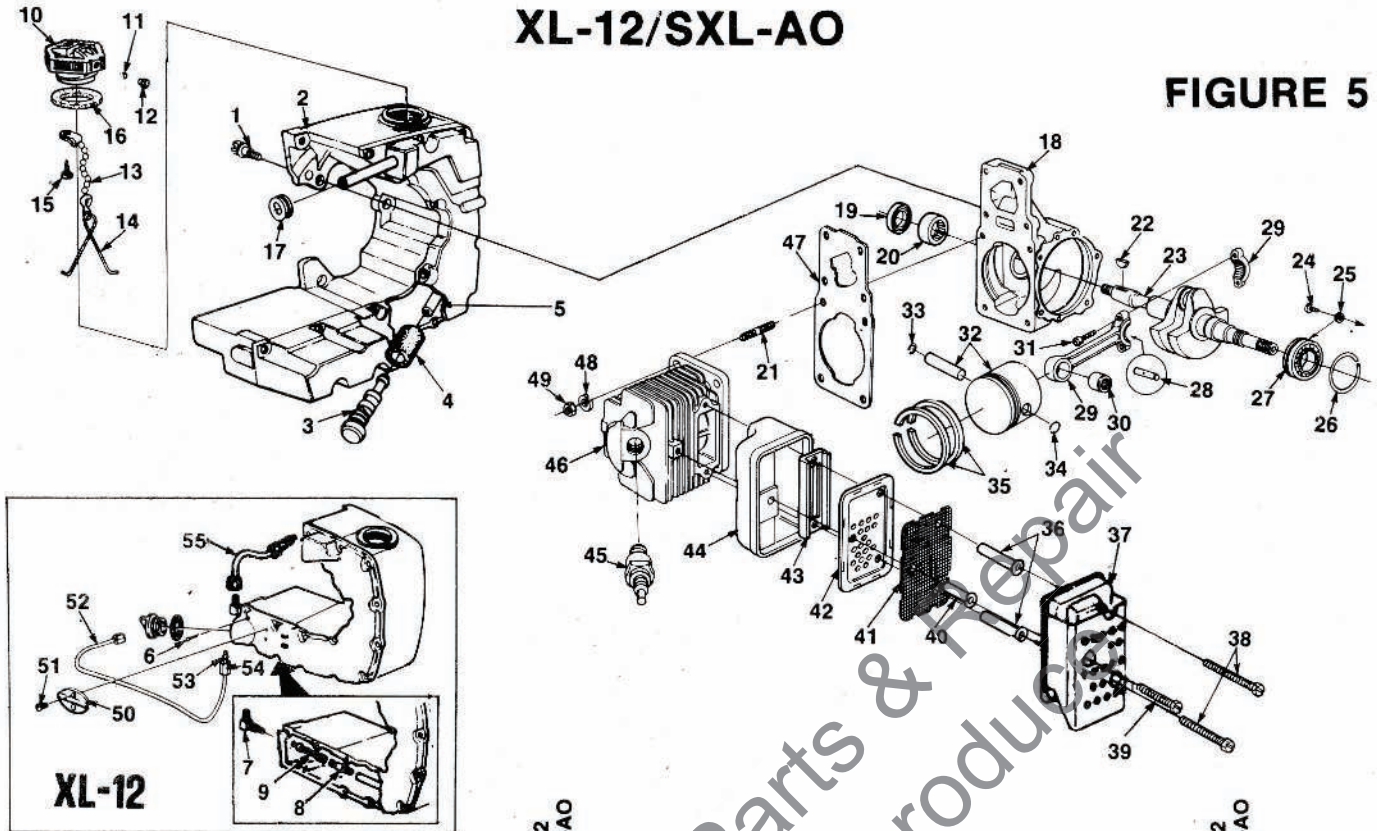


No.	Description	Part No.	XL-12	SXL-AO	Qty.	No.	Description	Part No.	XL-12	SXL-AO	Qty.
	FILTER- Oil assembly	A-69371	x		1	24	SCREW- Cam	64102-A	x		1
	Includes:					25	GASKET	59736	x		1
1	TUBE- Oil line	59325-2	x		1	26	"O" RING	59074	x		2
2	"O" RING	59765	x		2	27	SEAL- Felt	59926	x		1
3	TUBING-Rubber 2 1/4"	70309-08	x		1	28	WORM	59675	x		1
4	FILTER- Oil	A-68693	x		1	29	SCREW- Fil., 8-32 x 3/4	80248	x		3
5	LINE- Oil	A-59819	x		1	30	SCREW- Hex, 12-24 x 9/16	80899	x	x	4
	Includes:					31	GASKET- Crankcase	63355	x	x	1
6	GROMMET	59794	x		1	32	LINE- Oil (Discharge)	A-59806		x	1
7	CAP- Filler oil	A-63717-C	x		1		Includes:				
	Includes:					33	SLEEVE- Compression	25301	x		2
8	GASKET	56607	x		1	34	FILTER- Oil (Manual oil)	A-59804-A		x	1
9	DRIVECASE	A-59930-H	x		1	35	SCREW- (12-24 x 9/16)	80899	x		5
	Includes:					36	DRIVECASE	A-58925-D	x		1
10	STUD- Guide bar, 3/8 (Note 1)	67475	x		2		Includes:				
11	INSERT- Threaded (Note 1)	67476	x		2	37	SEAL	12282-A	x		1
12	SEAL	58308-B	x		1	38	BEARING- Needle	58956	x		1
13	PLUG	28097	x		1	39	PLUG- Button	94242	x		1
14	GASKET- Oil reservoir	59710	x		1	40	BOLT- Guide bar	67485	x		2
15	COVER- Oil reservoir	59649-4A	x		1	41	FITTING- Tube elbow (90° Connection)	56707	x		1
16	SCREW- Rd., 6-32 x 1/2	80513	x		9	42	SCREW- Guide bar adjusting	63225	x		1
	SCREW- Set (Not shown)	80742	x		1	43	PIN- Guide bar adjusting	93039	x		1
17	PIN- Cotter	86301	x		1	44	NUT- Gripco	81204	x		1
18	SCREW- Guide bar adjusting	63225	x		1						
19	PIN- Bar adjusting	93039	x		1						
20	NUT- Lock, 1/4-20	81204	x		1						
21	SCREW- Hex 12-24 x 1	80864	x		1						
22	PUMP- Automatic oil	A-59809-B	x		1						
	Includes:										
23	SCREW- Pan, 4-40 x 1/4	80919	x		2						

NOTE 1- When using 59764-A stud (5/16") and insert, guide bar plates 58781 (Inner) and 58782 (Outer) must be used.

XL-12/SXL-AO

FIGURE 5



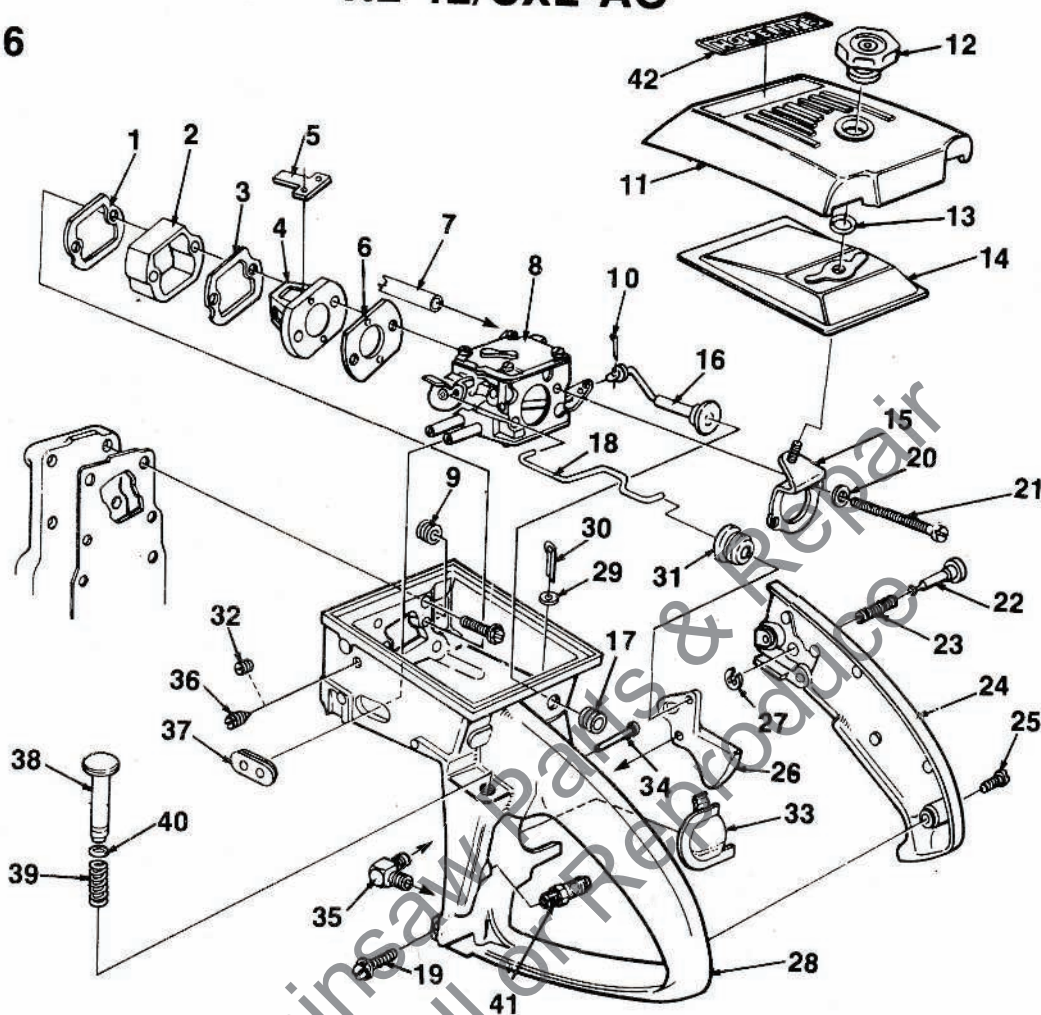
No.	Description	Part No.	XL-12	SXL-AO	Qty.	No.	Description	Part No.	XL-12	SXL-AO	Qty.
1	SCREW- Shoulder	63407	x	x	3	32	PISTON & PIN	A-58903-C	x	x	1
2	TANK- Fuel (Note 1)	A-63898-B	x				PISTON & PIN	A-68438		x	1
	TANK- Fuel (Note 1)	A-68345-A		x			Includes:				
	Includes:					33	RING- Retaining	75120	x	x	1
3	FILTER- Fuel	A-69923	x	x	1	34	RING- Retaining	64813	x	x	1
	Includes:					35	PISTON RING	58877	x		2
4	FILTER- Fuel	64083	x	x	1		MUFFLER	A-94219-A	x	x	1
5	TUBING- Fuel 9 1/4"	94772-37	x	x			Includes:				
6	PIN- Cotter (Manual)	86301	x		1	36	SPACER- Muffler	93983-01	x	x	2
7	VALVE- Inlet check (Manual)	A-59010	x		1	37	CAP- Muffler	A-93982-1	x	x	1
	Includes:					38	SCREW- Hex hd. (12-24 x 2 1/4)	94128	x	x	2
	BALL (Not shown)	25527	x		1	39	SCREW- Hex hd. (12-24 x 1 7/8)	94129	x	x	1
8	FILTER- Oil (Manual)	A-59009-A	x		1	40	SPACER- Muffler	93983-02	x	x	1
9	LINE- Pick-up (Manual)	59000	x		1	41	SCREEN- Spark arrestor	93979	x	x	1
10	CAP- Fuel filler	A-69500-A	x	x	1	42	BAFFLE- Muffler	93980	x	x	1
	Includes:					43	PLATE- Muffler	94133-A	x	x	1
11	VALVE- Check	69451	x	x	1	44	BODY- Muffler	93981	x	x	1
12	FILTER- Fuel cap	69454	x	x	1	45	SPARK PLUG (CJ8)	63710-S	x		1
13	CHAIN- Bead	69502	x	x	1		SPARK PLUG (CJ6)	63547-S		x	1
14	RETAINER	69503	x	x	1	46	CYLINDER	A-69715	x		1
15	SCREW- Pan hd. #6 x 1/4	82256	x	x	1		CYLINDER	A-69714		x	1
16	GASKET- Fuel filler cap	69501	x	x	1		Includes:				
17	GROMMET	68046	x	x	1	47	GASKET- Cylinder	59771	x	x	1
18	CRANKCASE	A-65736	x	x	1	48	WASHER- Lock, 1/4	83009	x	x	4
	Includes:					49	NUT- 1/4-28	81065-2	x	x	4
19	SEAL	12282-A	x	x	1	50	PLATE- Retaining	59016	x		1
20	BEARING	58956	x	x	1	51	SCREW- Pan hd (4-40 x 1/4)	80919	x		2
21	STUD	55871	x	x	4	52	LINE- Oil	A-59012	x		1
22	KEY-Woodruff	75078	x	x	1		Includes:				
23	CRANKSHAFT	63497-1	x		1	53	SLEEVE- Compression (1/8)	25301	x		2
	CRANKSHAFT	63498-1		x	1	54	NUT- Compression (5/16-24)	25302	x		1
24	SCREW- Torx	70306		x	2	55	LINE- Oil	A-94946	x		1
25	WASHER- Lock	59705		x	2						
26	RACE- Needle thrust	58725	x		2						
	RING- Retaining	58319-A		x	1						
27	BEARING-Needle thrust	58726	x		2						
	BEARING- Ball	58190-S		x	1						
28	ROLLER- Set (31)	A-69054	x	x	1						
29	ROD- Connecting	A-63477-B	x	x	1						
	Includes:										
30	BEARING	93369	x	x	1						
31	SCREW- Cap soc. hd.	69919	x	x	2						

NOTE 1- Fuel tank gasket 65642 and screw 80513 are still available for tanks that have not been permanently bonded.

NOTE 2- Muffler A-59052-A has been superseded by A-94219 Muffler. Replacement studs 59065-B, Baffle 59050, Caps A-63246-1, and spark arrestor DA-63500-1A are still available.

XL-12/SXL-AO

FIGURE 6



No.	Description	Part No.	XL-12	SXL-AO	Qty.
1	GASKET- Spacer	59274	x	x	1
2	SPACER	59718	x	x	1
3	RETAINER- Reed valve	63260-A	x	x	1
4	SEAT- Reed valve	63253	x	x	1
5	VALVE- Reed	59678-B	x	x	4
6	GASKET- Carburetor	59722	x	x	1
7	LINE- Fuel (Note 1) 9 1/4"	94772-37	x	x	1
8	CARBURETOR (Note 2) Walbro (SDC-62)	A-68371-B	x	x	1
	CARBURETOR Tillotson (HS-179B)	A-68363-B	x	x	1
	CARBURETOR Zama (#20-02)	A-94953	x	x	1
9	GROMMET	68279	x	x	1
10	COTTER PIN	86324	x	x	1
11	COVER- Air filter	58773-12	x	x	1
12	NUT- Air filter cover	A-65272	x	x	1
13	RING- Retaining	58319-A	x	x	1
14	FILTER ELEMENT	63589-A	x	x	1
15	BRACKET- Mounting	A-59822-B	x	x	1
16	ROD- Choke	A-69650	x	x	1
	Includes:				
17	GROMMET	58362	x	x	1
18	ROD- Throttle	59763	x	x	1
19	SCREW- Hex 12-24 x 7/8	80891	x	x	5
20	WASHER- Lock #10	83046	x	x	2
21	SCREW- Hex 10-32 x 2 11/16	80921	x	x	2
22	PIN- Throttle latch	95671	x	x	1
23	SPRING- Throttle latch	58405	x	x	1

No.	Description	Part No.	XL-12	SXL-AO	Qty.
24	COVER- Throttle handle	A-59213-1A	x	x	1
	Includes:				
	BUSHING- Pin	67752	x	x	1
25	SCREW- Pan 8-32 x 1/2	80560	x	x	2
26	TRIGGER- Throttle	58859	x	x	1
27	RING- Retaining	58409	x	x	1
28	THROTTLE HANDLE	A-93926	x	x	1
	Includes:				
29	WASHER- Flat	63290	x	x	1
30	PIN- Cotter	86301	x	x	1
31	BOOT- Throttle rod	67634	x	x	1
32	PLUG	63303	x	x	1
33	SHIELD- Spark plug	93209	x	x	1
34	PIN	94142	x	x	1
35	VALVE- Check	A-59011	x	x	1
36	SCREW- Idle	63302-B	x	x	1
37	GROMMET- Hi-Lo	59770	x	x	1
38	PLUNGER- Spring	A-93783	x	x	1
	Includes:				
39	SPRING- Compression	59293	x	x	1
40	"O" RING	74388	x	x	1
41	VALVE- Check	A-59818	x		1
42	LABEL- Homelite	96479	x	x	1

NOTE 1- The 63745-A fuel line is available for A-58767-C Carburetor.

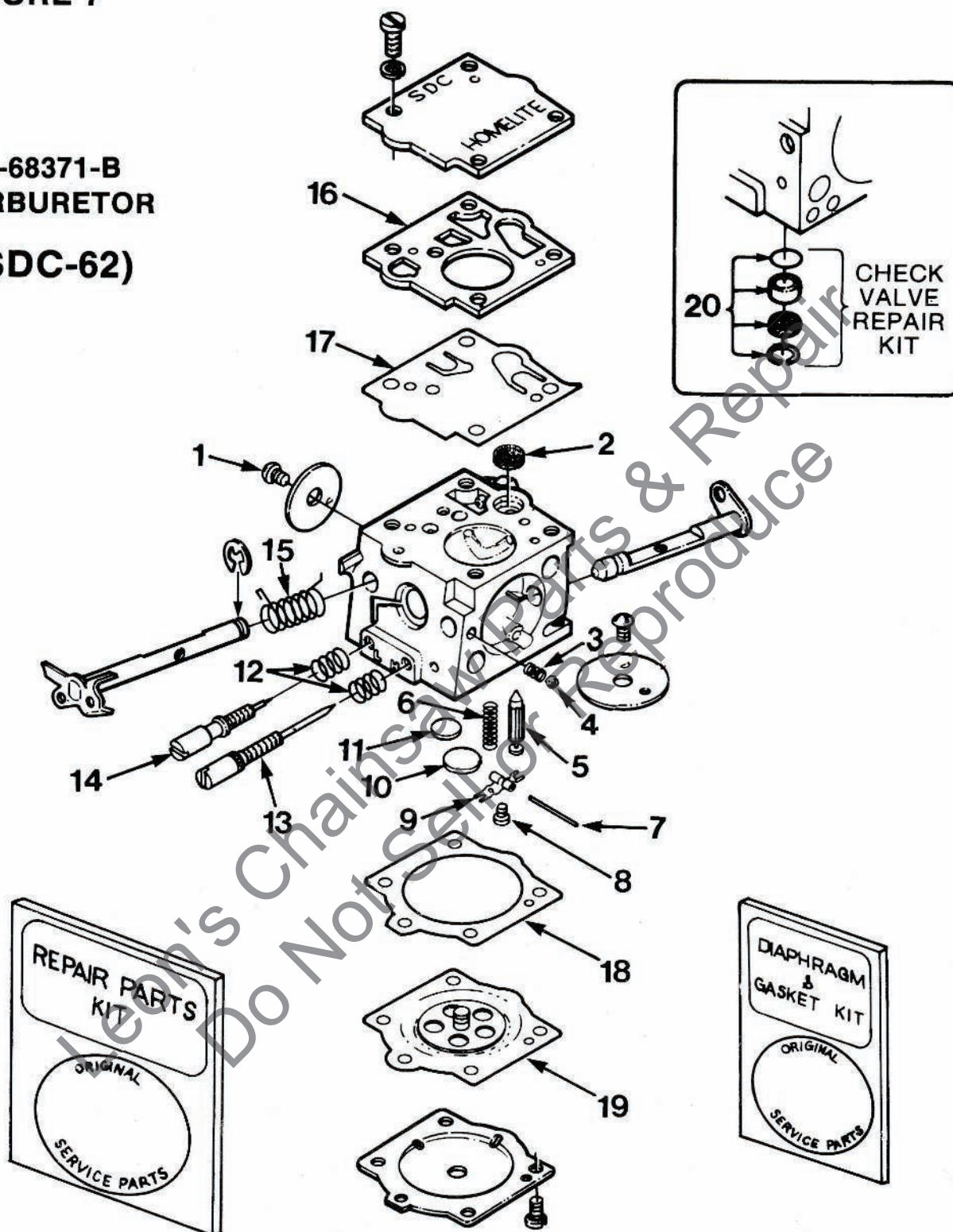
NOTE 2- The A-68363 and A-68407 Carburetors require 68155 fuel line, 68046 grommet and 68279 grommet.

ALWAYS FURNISH MODEL AND SERIAL NUMBER WHEN ORDERING PARTS.

XL-12/SXL-AO

FIGURE 7

**A-68371-B
CARBURETOR
(SDC-62)**

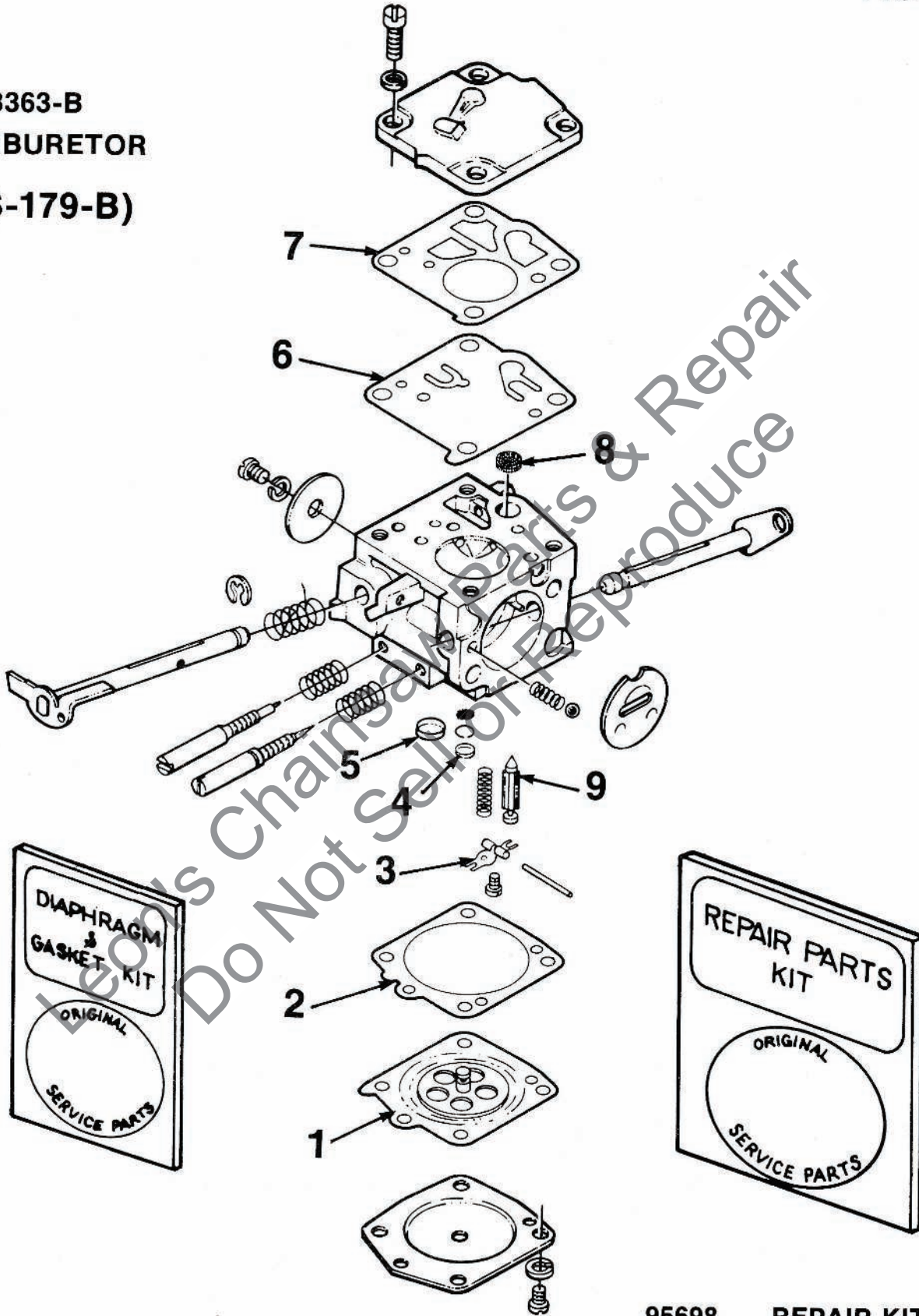


- 67020 REPAIR KIT (1-19)
- 70811 DIAPHRAGM & GASKET KIT (16-19)
- 93910 CHECK VALVE KIT (20)
- 64229 INLET NEEDLE (5)

XL-12/SXL-AO

FIGURE 8

A-68363-B
CARBURETOR
(HS-179-B)

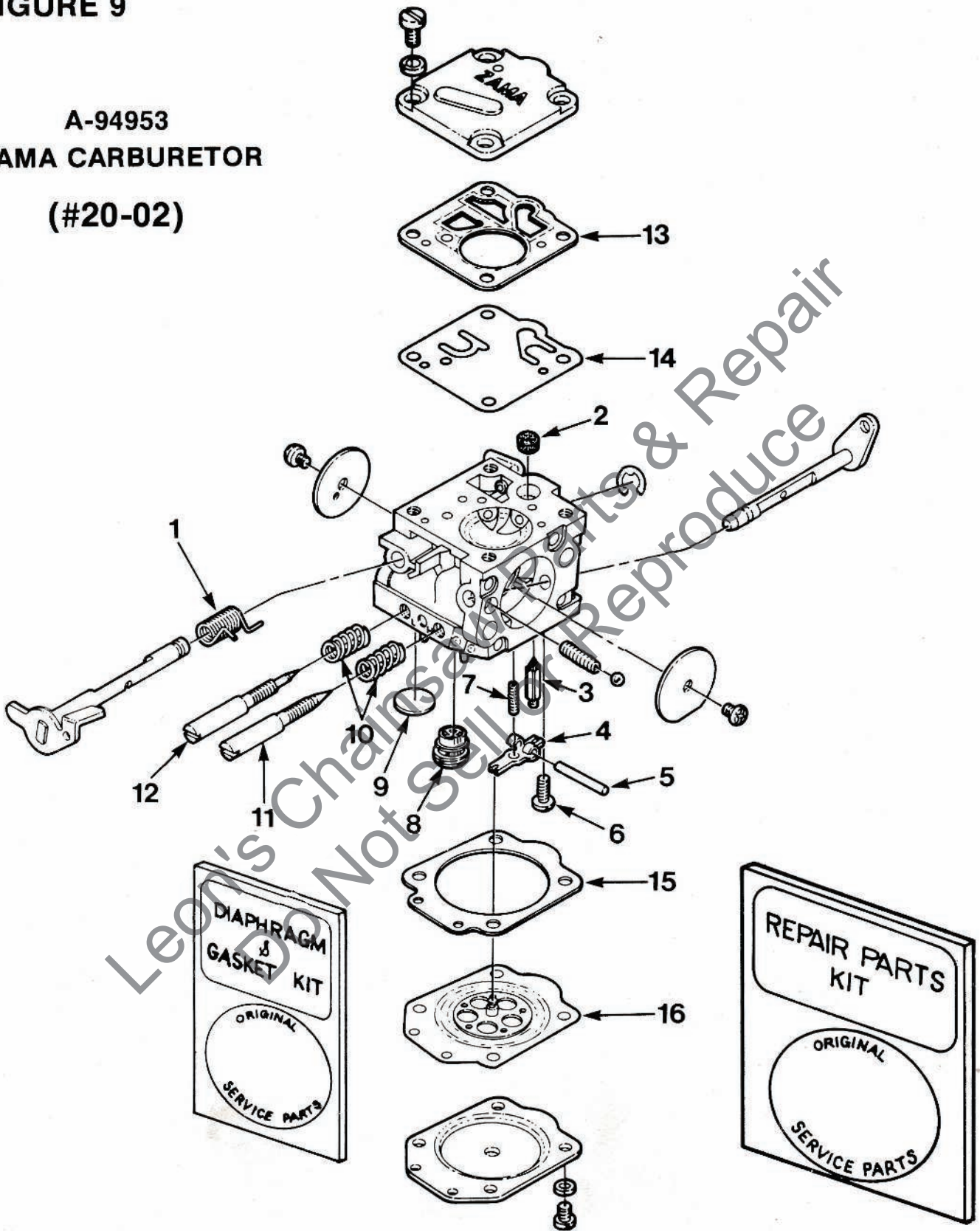


95698 REPAIR KIT (1-9)

XL-12/SXL-AO

FIGURE 9

A-94953
ZAMA CARBURETOR
(#20-02)



- 94954 REPAIR KIT (1-16)
- 94952 DIAPHRAGM & GASKET KIT (13-16)

TOOLS FOR XL-12

Description	Part No.
PLIERS- Piston snap ring	22828
PLUG- Bearing assembly & disassembly connecting rod	23756
PLUG- Bearing assembly & disassembly drive & crankcase	23757
PLUG- Seal assembly- drive & crankcase	23758
PLUG- Piston pin removal	A-23949
Includes:	
"O" RING	67900
PULLER- Magneto remover	A-24290
SLEEVE- Seal protecting- crankcase	23759
SLEEVE- Seal installation- drive and crankcase	23800
WRENCH- Hex socket screw (conn, rod)	23528
WRENCH- Spanner to assemble & disassembly clutch	A-23934
Includes:	
PIN	23954
WRENCH- Socket	68651
SSREWDRIVER	24541
TOOL- Clutch removal	A-93791
Includes:	
PIN	23717-A

TOOLS FOR THE SXL-AO

Description	Part No.
ANVIL- Crankshaft	23846-4
COLLAR- Ball bearing installation	22820-1
DRIVER- Check valve (for SDC Carburetor)	24173
JACKSCREW	A-23137
PLIERS- Piston snap ring	22828
PLUG- Bearing assembly & disassembly connecting rod	23756
PLUG- Bearing assembly & disassembly Drive & Crankcase	23757
PLUG- Seal assembly- Drive & Crankcase	23758
PLUG- Seal installation drivecase assembly	23845
PLUG- Piston pin removal	A-23949
Includes:	
"O" RING	67900
PULLER- Magneto remover	A-24290
SLEEVE- Bearing & Shaft installation	23884-A
SLEEVE- Bearing & Shaft installation	23136-2A
SLEEVE- Seal protecting	23844
SLEEVE- Seal protecting crankcase	23759
SLEEVE- Seal installation drivecase & crankcase	23843
SLEEVE- Seal installation drive & crankcase	23800
WRENCH- Hex socket screw (Connecting rod)	23528
WRENCH- Spanner to assemble & disassemble clutch	A-23934
Includes:	
PIN	23954
WRENCH- Socket	68651
SCREWDRIVER	24541
WRENCH- Insert	A-24322
TOOL- Clutch removal	A-93791
Includes:	
PIN	23717-A
BIT- Driver-torx 1/4" Hex shank	24982-01
BIT- Driver-torx 5/16" Hex shank	24982-02

ACCESSORIES

Description	Part No.	XL-12	SXL-AO
KIT- Manual oil pump (Prior to s/n 50440501)	A-65868	1	
Includes:			
BUTTON	57289-1	1	
LINE- Oil	A-59819	1	
Includes:	A-59818	1	
GROMMET	59794	1	
VALVE- Check	A-59818	1	
Includes:			
BALL	25527	1	
FILTER- Oil (intake)	A-59804-A	1	
PLUNGER	A-57834-10	1	
Includes:			
"O" RING	74388	1	
"O" RING	59074	1	
SPRING	59293	1	
When this kit is assembled to the unit, the unit will have a complete manual oil pump system.			
KIT- Hand guard	A-70910	1	
Includes:			
WASHER	58851-2	1	
WASHER	70788	1	
SLEEVE	70911	1	
SCREW- Machine flat hd.	70926	1	
SCREW	80945	1	
NUT	81225	1	
SCREW	82223	1	
KIT- Hand Guard	A-70944	1	
Includes:			
WASHER	58851-2	1	
WASHER	70788	1	
SLEEVE	70911	1	
SCREW	80945	1	
NUT	81225	1	
KIT- SAFE•T•TIP® (Standard)	A-70790-A	1	1
Includes:			
SCREW	82335	1	1
CARRY CASE	95920	1	1
REEL- Starting rope (250 ft.) #5	57084-1	1	1
KIT- Insert (for drivecase guide bar studs)	A-70370-A	1	
TUBING- Rubber 10 ft. (Fuel)	94772-99	1	1
TUBING- Rubber 10 ft. (Oil)	70309-99	1	1

PAINT

Description	Part No.	XL-12	SXL-AO
LACQUER- Red	23475	1	1
LACQUER- Black	22772	1	1

HOMELITE DIVISION OF TEXTRON INC.

P.O. BOX 7047
14401 CAROWINDS BOULEVARD
CHARLOTTE, N.C. 28217

Leon's Chainsaw Parts & Repair
Do Not Sell or Reproduce

3282YZ

HOMELITE **TEXTRON**

Homelite Division of Textron Inc.