

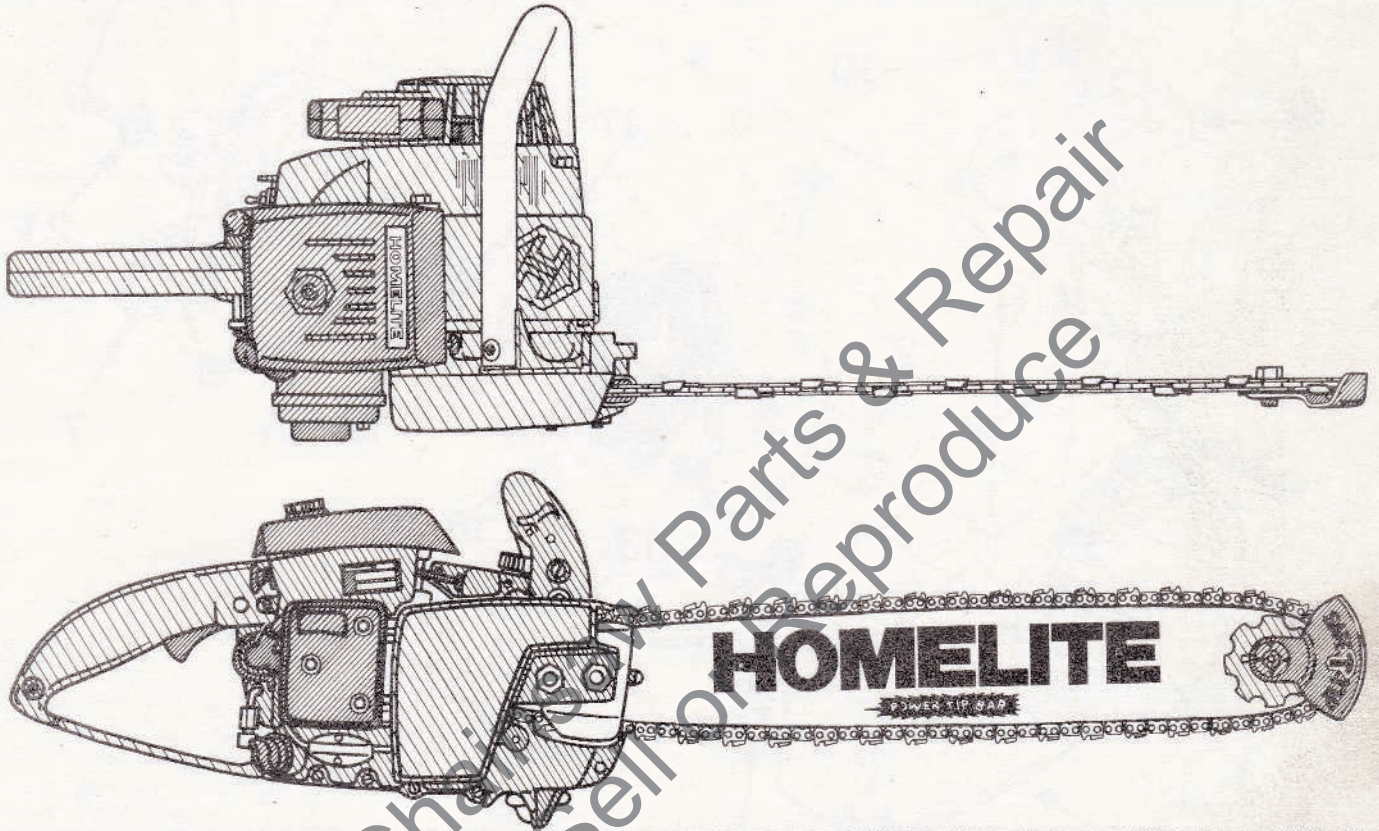
ILLUSTRATED PARTS LIST

PART NO. 24228 - REV 2

PRINTED IN U.S.A.

PRICE 35¢

HOMELITE®



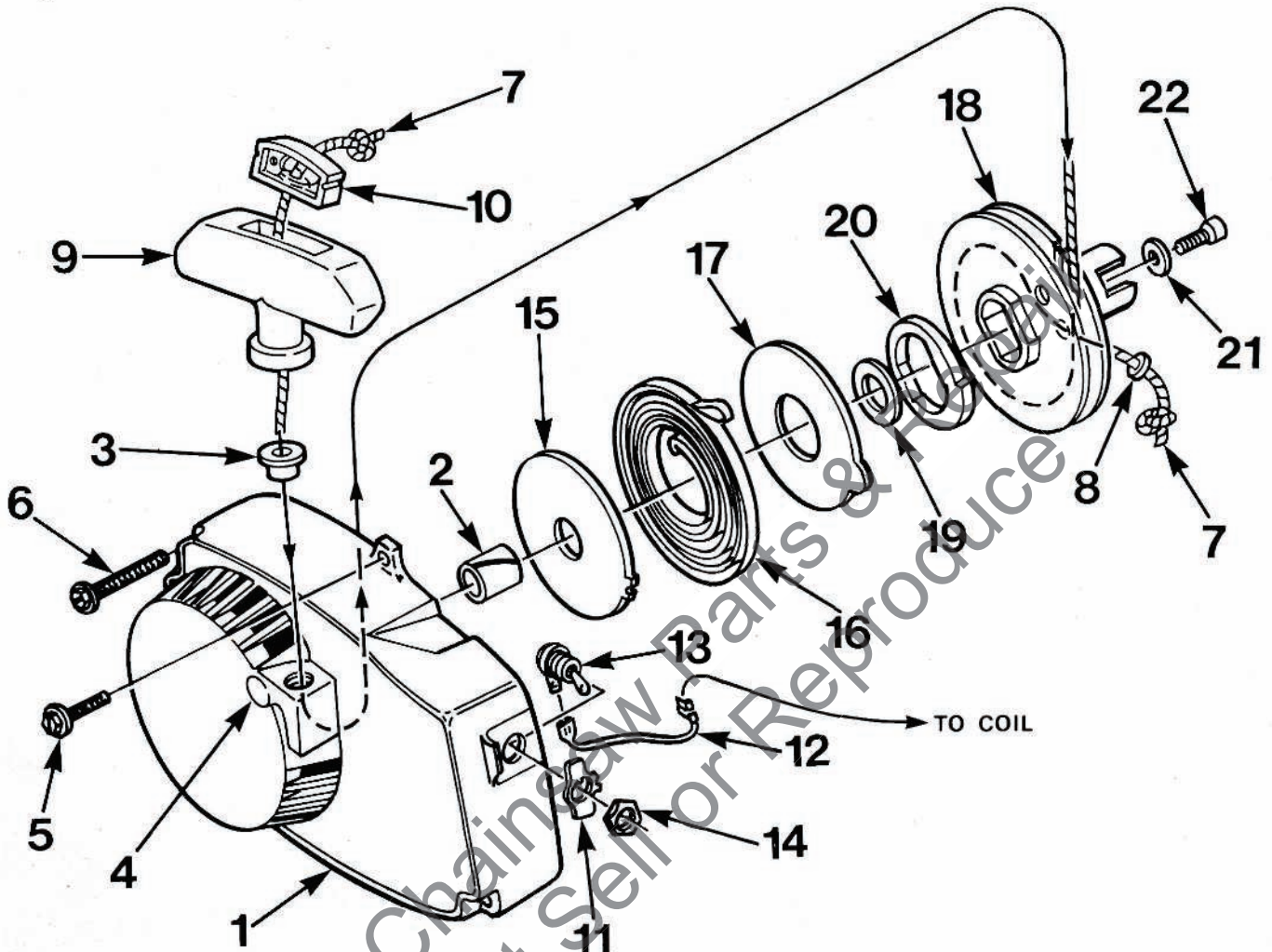
XL-12[®]
WITH PYRAMID REED SYSTEM
& SXL-AO
CHAIN SAWS

HOMELITE **TEXTRON**

Homelite Division of Textron Inc.

XL-12 & SXL-AO

Figure 1

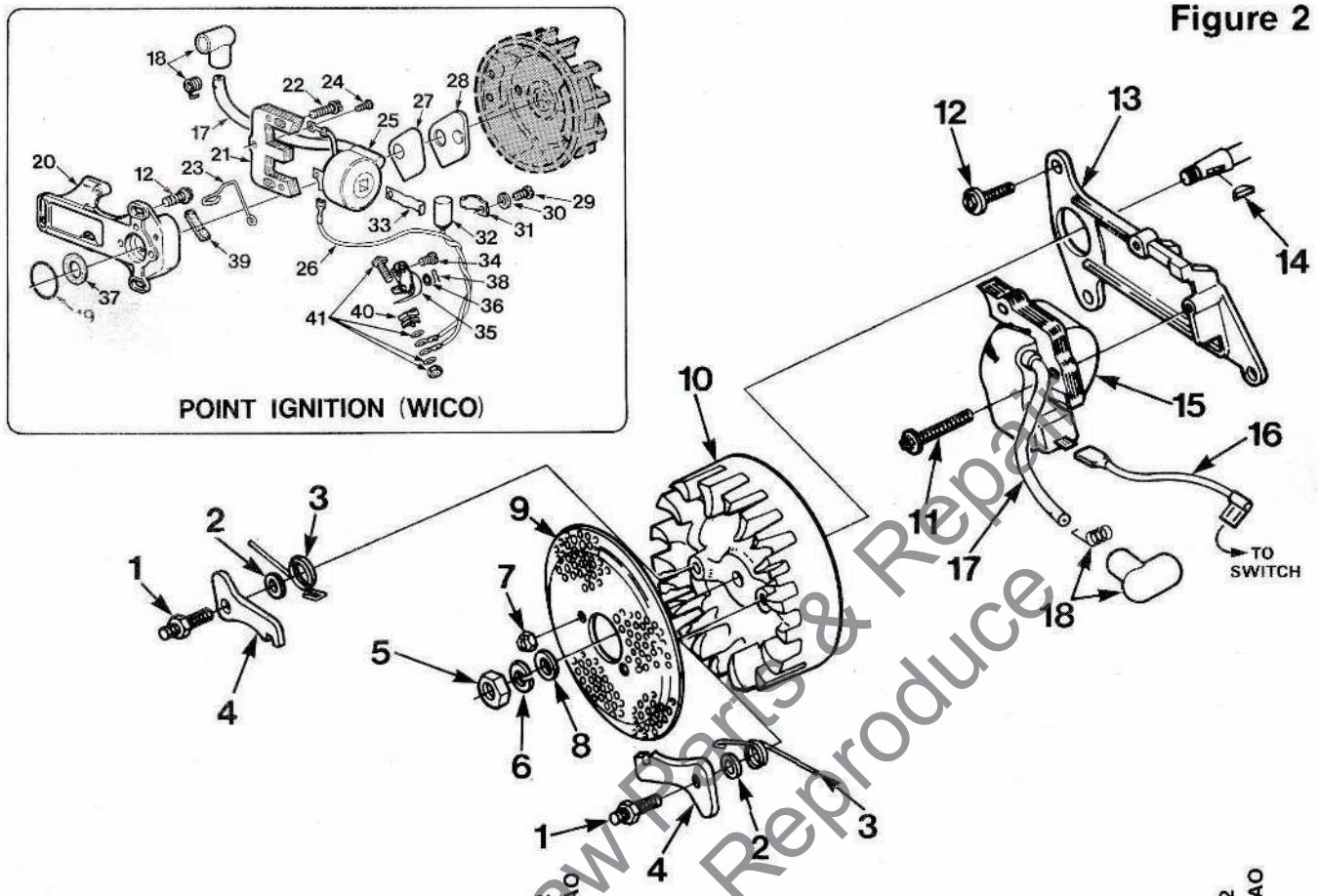


No.	Description	Part No.	XL-12	SXL-AO	Qty.
1	HOUSING- Fan Includes:	A-64518	x	x	1
2	BUSHING- Starter	64443	x	x	1
3	BUSHING- Rope	67177	x	x	1
4	DRIVE STUD	59067	x	x	1
5	SCREW- Hex, 12-24 x 5/8	80676	x	x	4
6	SCREW- Hex, 12-24 x 1-11/16	58963	x	x	3
7	ROPE- Starter 48" Long #5 Includes:	A-93875	x	x	1
8	WASHER- Flat (Nylon)	93862	x	x	1
9	GRIP- Starter rope Includes:	A-69962-B	x	x	1
10	INSERT	70018-A	x	x	1
11	PLATE- "ON-OFF"	70839	x	x	1

No.	Description	Part No.	XL-12	SXL-AO	Qty.
12	LEAD- Ground (Solid State) LEAD- Ground (Point Ignition)	A-94850 A-59031	x	x	1
13	SWITCH Includes:	A-57650-3A	x	x	1
14	NUT	72084-A1	x	x	1
15	SHIELD- Spring (Inner)	59638-A	x	x	1
16	SPRING- Recoil	58764-A	x	x	1
17	SHIELD- Spring (Outer)	59639-A	x	x	1
18	PULLEY- Starter Includes:	A-64446	x	x	1
19	BUSHING- Spring	64400	x	x	1
20	LOCK- Spring	64049-B	x	x	1
21	WASHER- Retaining	58763	x	x	1
22	SCREW- Hex, 10-32 x 1/2	80648	x	x	1

XL-12 & SXL-AO

Figure 2

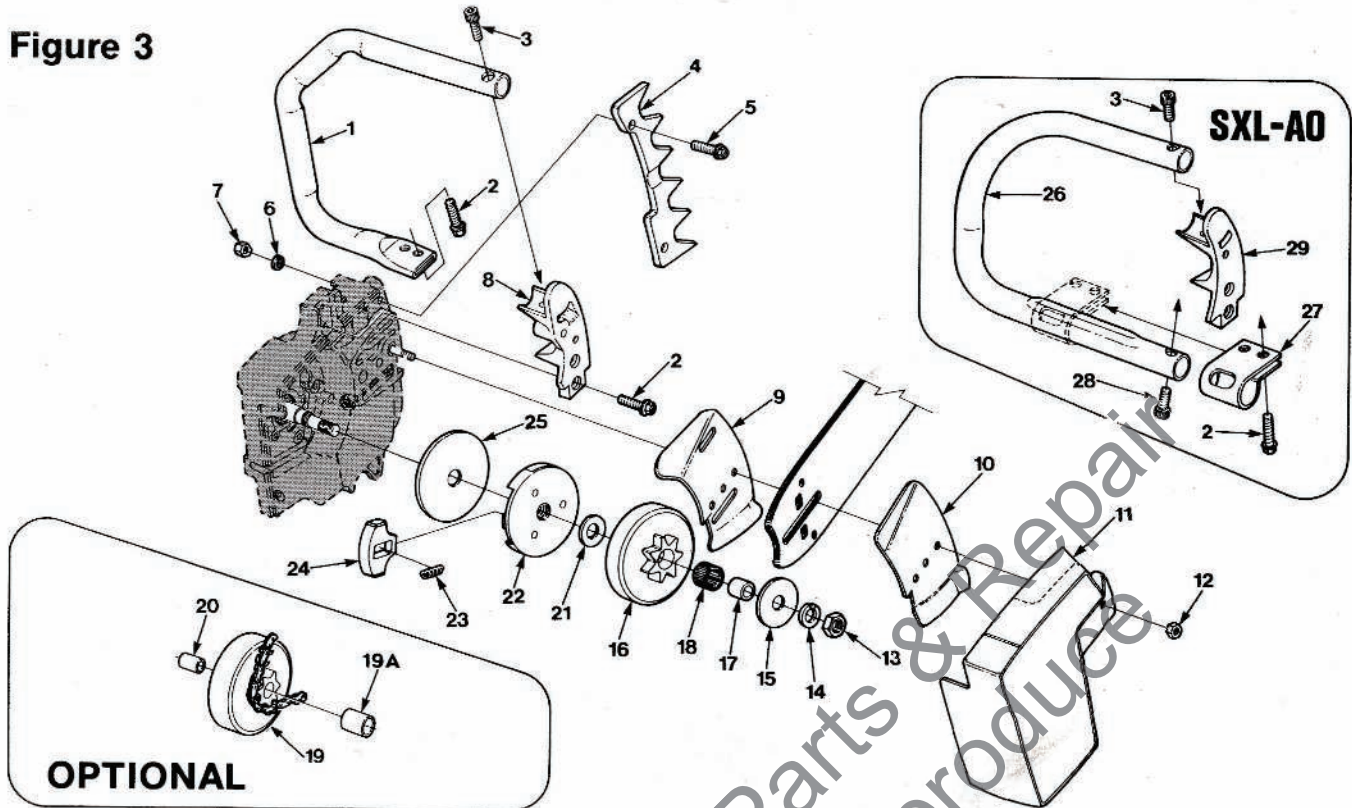


No.	Description	Part No.	XL-12	SXL-AO	Qty.	No.	Description	Part No.	XL-12	SXL-AO	Qty.
1	STUD- Shoulder	58757-E	x	x	2	25	COIL- With lead (Point Ignition)	(W) A-94325	x	x	1
2	WASHER- Lock	70901	x	x	2		Includes:				
3	SPRING- Starter pawl	65375-2	x	x	2	26	LEAD	93095	x	x	1
4	PAWL- Starter	58756	x	x	2	27	GASKET- Breaker box cover (Point Ignition)	(W) 58810	x	x	1
5	NUT- Hex (5/16-24)	81117	x	x	1	28	COVER- Breaker box (Point Ignition)	(W) 58811	x	x	1
6	WASHER- Lock (5/16)	83002	x	x	1	29	SCREW- Hd. (8-32 x 5/16) (Point Ignition)	(W) 30261	x	x	1
7	NUT- Center lock (#10-32)	81206	x	x	2	30	WASHER- Point set (Point Ignition)	83060	x	x	2
8	WASHER- Flat (5/16)	84056	x	x	1	31	CLAMP- Condenser (Point Ignition)	(W) 59622	x	x	1
9	SCREEN- Starter	58765	x	x	1	32	CONDENSER (Point Ignition)	(W) 63250-A	x	x	1
10	ROTOR- Magneto	(W) 70639	x	x	1	33	CLIP- Coil retaining (Point Ignition)	(W) 63726	x	x	1
11	SCREW- Hex washer hd. (8-32 x 3/4)	82248	x	x	2	34	SCREW- Contact plate (Point Ignition)	(W) 76421	x	x	1
12	SCREW- Hex hd. (12-24 x 5/8)	80676	x	x	3	35	POINTS- Breaker (Point Ignition)	(W) A-58914-A	x	x	1
13	PLATE- Ignition coil mtg. (Solid State)	94326-1	x	x	1		Includes:				
14	KEY- Rotor	75067	x	x	1	36	WASHER- Plain	(W) 28028	x	x	A/R
15	MODULE & CORE (Solid State)	94605	x	x	1	37	SEAL- Felt	(W) 59760	x	x	1
16	LEAD- Ground (Solid State)	A-94850	x	x	1	38	CLIP	(W) 28008	x	x	1
	LEAD- Ground (Point Ignition)	A-59031	x	x	1	39	CAM- Felt		x	x	1
17	LEAD- High tension	58966	x	x	1	40	BLOCK- Terminal (Point Ignition)	(W) A-68162	x	x	1
18	TERMINAL- High tension	A-33055	x	x	1		Includes:				
19	GASKET- Stator (Point Ignition)	59538	x	x	1	41	NUT- Connection stud	(W) 93099	x	x	1
20	BOX- Breaker (Point Ignition)	(W) A-94556	x	x	1						
	Includes:										
21	CORE	93098	x	x	1						
22	SCREW- Hex washer hd. (8-32 x 3/4)	82248	x	x	2						
23	CLIP- Breaker box cover (Point Ignition)	76413	x	x	1						
24	SCREW- Terminal (Point Ignition)	(W) 64090	x	x	1						
		(W) Wico (A/R) As Required									

ALWAYS FURNISH MODEL AND SERIAL NUMBER WHEN ORDERING PARTS.

XL-12 & SXL-AO

Figure 3



No.	Description	Part No.	XL-12	SXL-AO	Qty.	No.	Description	Part No.	XL-12	SXL-AO	Qty.
1	HANDLE BAR- Flush cut	A-58793-A	x	x	1	20	RACE- Inner	55584	x	x	1
2	SCREW- 12-24 x 3/4	80867	x	x	4	21	WASHER- Thrust (Inner)	58833	x	x	1
3	SCREW- Socket hd. 1/4-20 x 1	80428-1	x	x	1	CLUTCH & COVER		A-69480-B	x	x	1
4	BUMPER KIT- Spiked (Accessory)	A-59043	x	x	1	22	Includes: PLATE- Clutch	65760-1B	x	x	1
	Includes:					23	SPRING- Clutch	67053	x	x	3
5	SCREW- Hex, 12-24 x 3/4	80867	x	x	2	24	SHOE- Clutch	69461	x	x	3
6	WASHER- Lock, #12	70901	x	x	2	25	COVER- Clutch	63051	x	x	1
7	NUT- Hex, 12-24	81068	x	x	2	26	HANDLE BAR- Flush cut	A-70365	x		1
8	BRACKET- Handle bar KIT- Guide bar plate	59246-5 A-70618	x	x	1		Includes:				
	Includes:					27	CLAMP	63291-A	x		1
9	PLATE- Guide bar (Inner)	70399	x	x	1	28	SCREW- Soc. hd. 1/4-20	80428-1	x		1
10	PLATE- Guide bar (Outer)	70400	x	x	1	29	BRACKET- Handle bar (Note 1)	59651-10	x		1
11	COVER- Drivecase	58750-16	x	x	1	ACCESSORIES NOT SHOWN					
12	NUT- Hex, 3/8-16	81089-2	x	x	2	HANDLE BAR- Wrap around (Accessory) (Note 1)					
13	NUT- Lock 3/8-24	81124	x	x	1		Includes:				
14	WASHER- Lock 3/8	83018	x	x	1		HANDLE BAR	A-63421	x		1
15	WASHER- Thrust (Outer)	65064	x	x	1		BRACKET- Handle Bar	59651-6B	x		1
	SPROCKET & DRUM- 3/8 7 tooth (Standard) (Note 2)	A-69633-A	x	x	1		BRACKET- Handle Bar mtg.	63405	x		1
	Includes:						SCREW- Hex. Hd. 12-24 x 5/8	80676	x		1
16	SPROCKET & DRUM	A-65884	x	x	1		KIT- Hub & drum	A-67090-A	x	x	1
17	RACE- Inner	65746-B	x	x	1		Includes:				
18	BEARING- Roller	64124	x	x	1		HUB & DRUM- "Splined"	A-65990	x	x	1
19	SPROCKET & DRUM- (Optional) 3/8" pitch, 8 tooth	A-63346	x	x	1		BEARING- Needle (Cage)	64124	x	x	1
	.404 pitch, 7 tooth	A-59555	x	x	1		RACE- Inner	65746-B	x	x	1
	Includes:						WASHER- Thrust (Outer)	58833	x	x	1
19A	BEARING- Needle (Note 3)	72311	x	x	1		SPROCKET- Splined Rim Type 3/8" pitch, 7 tooth (Note 2)	63284	x	x	1
							.404 pitch, 7 tooth (Note 2)	63285	x	x	1

NOTE 1: A-63421 HANDLE BAR requires 59651-6B Bracket to replace index #29, and another 63405 Bracket which mounts on drivecase cover. 80676 Screw attaches drivecase cover bracket to handle bar.

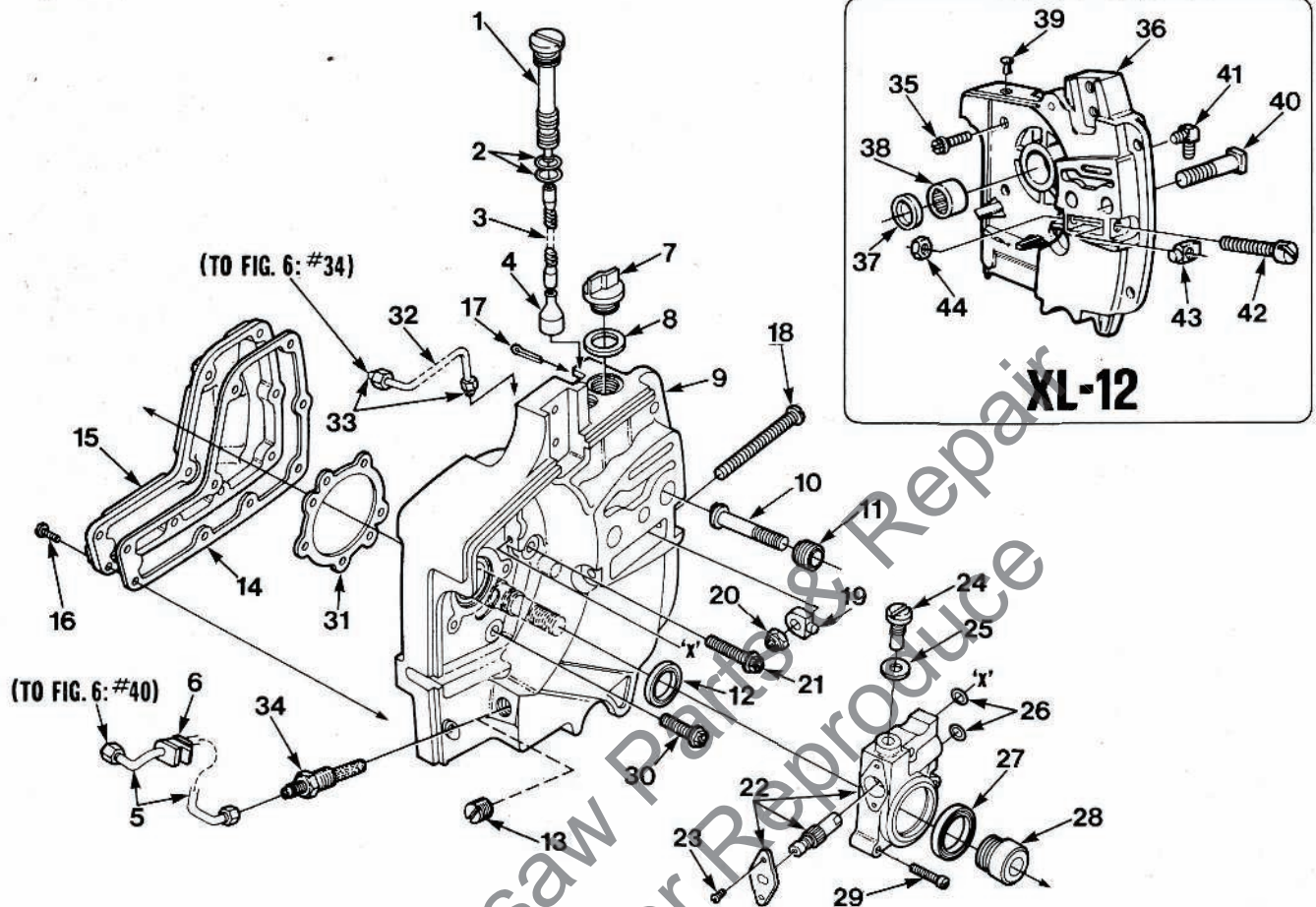
NOTE 2: Check type and number of teeth before ordering. "Splined" Hub and Drum requires one of the "Splined" sprocket listed.

NOTE 3: RACE No. 55584 required with No. 72311 Needle Bearing.

XL-12 & SXL-AO

Figure 4

Figure 4A

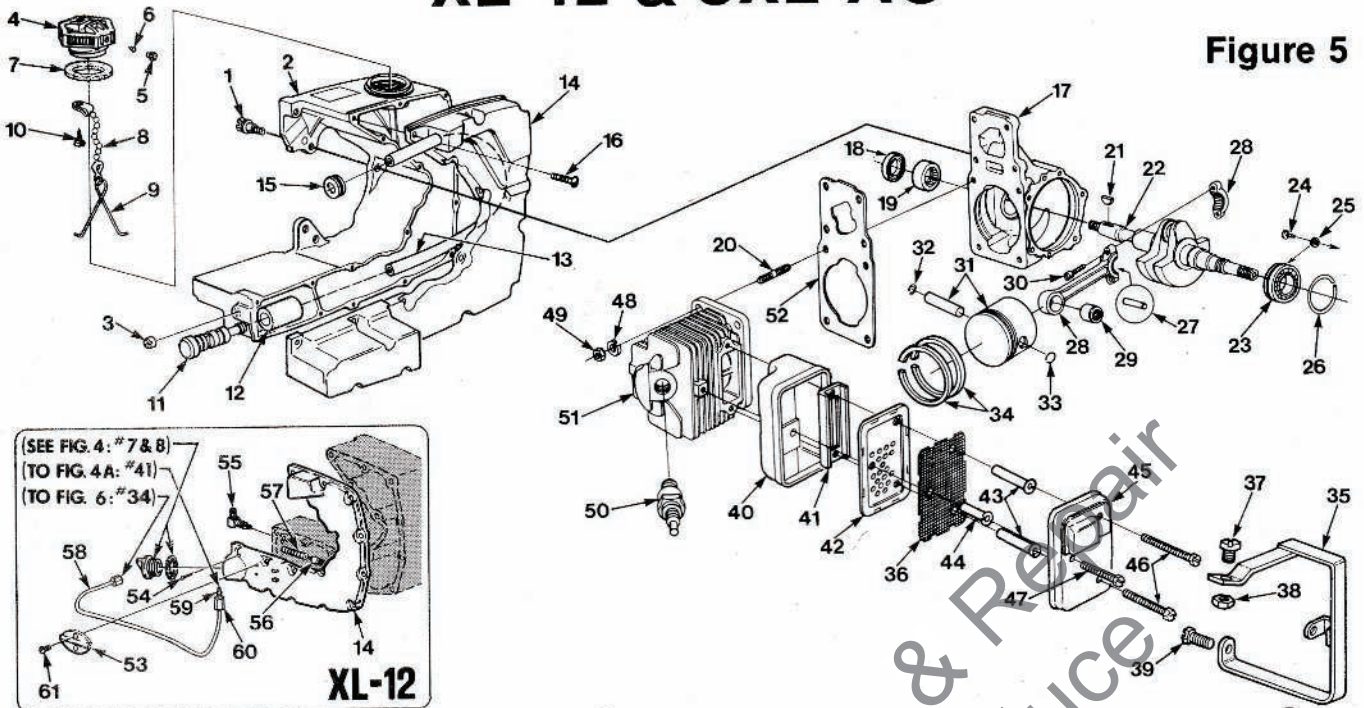


No.	Description	Part No.	XL-12	SXL-AO	Qty.	No.	Description	Part No.	XL-12	SXL-AO	Qty.
	FILTER- Oil Assembly	A-69371	x		1	21	SCREW- Hex, 12-24 x 1	80864	x		1
	Includes:					22	PUMP- Automatic oil	A-59809-B	x		1
1	TUBE- Oil line	59325-2	x		1		Includes:				
2	"O" RING	59765	x		2	23	SCREW- Pan, 4-40 x 1/4	80919	x		2
3	TUBING- Rubber	70309-09	x		1	24	SCREW- Cam	64102-A	x		1
4	FILTER- Oil	A-68593	x		1	25	GASKET	59736	x		1
5	LINE- Oil	A-59819	x		1	26	"O" RING	59074	x		2
	Includes:					27	SEAL- Felt	59926	x		1
6	GROMMET	59794	x		1	28	WORM	59675	x		1
7	CAP- Filler oil	A-63717-C	x		1	29	SCREW- Fil, 8-32 x 3/4	80248	x		3
	Includes:					30	SCREW- Hex, 12-24 x 9/16	80899	x		4
8	GASKET	56607	x		1	31	GASKET- Crankcase	63355	x		1
9	DRIVECASE	A-59930-G	x		1	32	LINE- Oil (Discharge)	A-59806	x		1
	Includes:						Includes:				
10	STUD- Guide bar, 3/8"					33	SLEEVE- Compression	25301	x		2
	(Note 1)	67475	x		2	34	FILTER- Oil (manual oil)	A-59804-A	x		1
11	INSERT- Threaded (Note 1)	67476	x		2	35	SCREW- (12-24 x 9/16)	80899	x		5
12	SEAL	58308-B	x		1	36	DRIVECASE	A-58925-D	x		1
13	PLUG	28097	x		1		Includes:				
14	GASKET- Oil reservoir	59710	x		1	37	SEAL	12282-A	x		1
15	COVER- Oil reservoir	59649-4A	x		1	38	BEARING- Needle	58956	x		1
16	SCREW- Rd., 6-32 x 1/2	80513	x		9	39	PLUG- Button	94242	x		1
	SCREW- Set					40	BOLT- Guide bar	67485	x		2
	(Not shown)	80742	x		1	41	FITTING- Tube elbow				
17	PIN- Cotter	86301	x		1		90° connection	56707	x		1
18	SCREW- Guide bar adjusting	63225	x		1	42	SCREW- Guide bar adjusting	63225	x		1
19	PIN- Bar adjusting	93039	x		1	43	PIN- Guide bar adjusting	93039	x		1
20	NUT- Lock, 1/4-20	81204	x		1	44	NUT- Gripco	81204	x		1

NOTE 1: When using 59764-A Stud (5/16") and 59896-A Insert, Guide Bar Plates 58781 (inner) and 58782 (outer) must be used.

XL-12 & SXL-AO

Figure 5

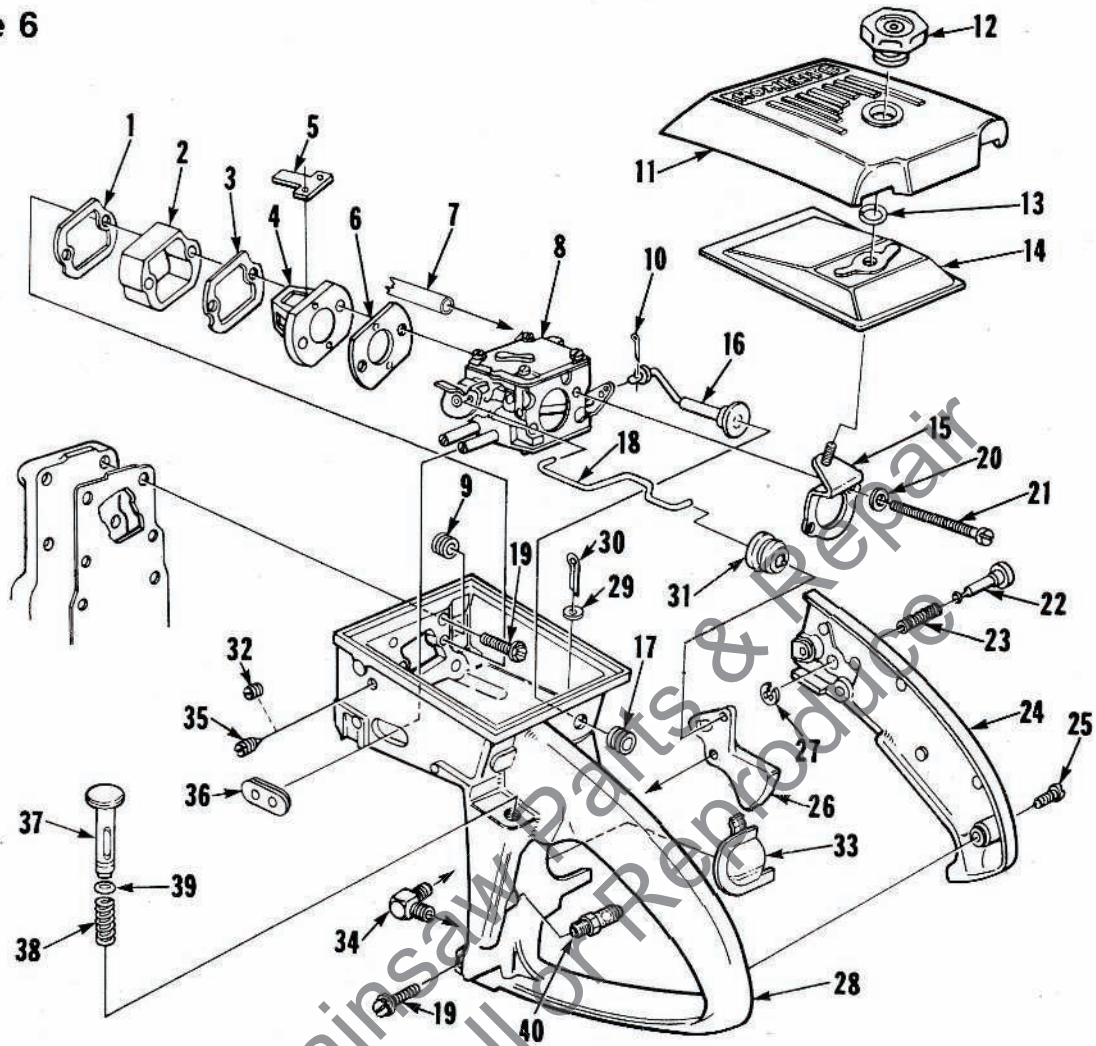


No.	Description	Part No.	XL-12	SXL-AO	Qty.	No.	Description	Part No.	XL-12	SXL-AO	Qty.
1	SCREW- Shoulder	63407	x	x	3	33	RING- Retaining	64813	x	x	1
2	TANK- Fuel	A-68396	x	x	1	34	PISTON RING	58877	x	x	2
	Includes:						PISTON RING	59436-1A	x	x	2
3	PLUG	59571	x	x	1	35	KIT- Muffler temp. (XL-12W & SXL-AOW))	A-94212	x	x	1
4	CAP- Fuel filler	A-69500-A	x	x	1		Includes:				
	Includes:					36	GUARD		x	x	1
5	FILTER- Fuel cap	69454	x	x	1	36	SCREEN- Spark arrestor	93979	x	x	1
6	VALVE- Check	69451	x	x	1	37	SCREW- Hex hd. (#12-24 x 5/8)	80676	x	x	1
7	GASKET- Fuel filler cap	69501	x	x	1	38	NUT- Hex (12-24)	81225	x	x	1
8	CHAIN- Bead	69502	x	x	1	39	SCREW- Hex hd. (12-24 x 1)	80864	x	x	1
9	RETAINER	69503	x	x	1		MUFFLER- (Standard) (Note 1)	A-94219	x	x	1
10	SCREW- Pan hd., #6 x 1/4	82256	x	x	1		Includes:				
11	FILTER- Fuel	A-69923	x	x	1	40	BODY- Muffler	93981	x	x	1
	Includes:					41	PLATE- Muffler	94133-A	x	x	1
12	FILTER- Felt	64083	x	x	1	42	BAFFLE- Muffler	93980	x	x	1
13	LINE- Fuel	94772-37	x	x	1	43	SPACER- Muffler	93983-01	x	x	2
14	COVER- Fuel tank	63740-2	x	x	1	44	SPACER- Muffler	93983-02	x	x	1
	COVER- Fuel tank	63739-2	x	x	1	45	CAP- Muffler	A-93982	x	x	1
15	GROMMET	68046	x	x	1	46	SCREW- Hex hd. (12-24 x 2 1/4)	94128	x	x	2
16	SCREW- Rd., #6 x 1/2	80513	x	x	16	47	SCREW- Hex hd. (12-24 x 1 7/8)	94129	x	x	1
17	CRANKCASE	A-65736	x	x	1	48	WASHER- Lock, 1/4	83009	x	x	4
	Includes:					49	NUT- 1/4-28	81065-2	x	x	4
18	SEAL	12282-A	x	x	1	50	SPARK PLUG	63710-S	x	x	1
19	BEARING	58956	x	x	1		SPARK PLUG	63547-S	x	x	1
20	STUD	55871	x	x	4	51	CYLINDER	A-69715	x	x	1
21	KEY- Woodruff	75078	x	x	1		CYLINDER	A-69714	x	x	1
22	CRANKSHAFT	63497-1	x	x	1		Includes:				
	CRANKSHAFT	63498-1	x	x	1	52	GASKET- Cylinder	59771	x	x	1
23	BEARING- Needle thrust	58726	x	x	2	53	PLATE- Retaining	59016	x	x	1
	BEARING- Ball	58190-S	x	x	1	54	PIN- Cotter	86301	x	x	1
24	SCREW- Torx	70306	x	x	2	55	VALVE- Inlet check	A-59010	x	x	1
25	WASHER- Lock	59705	x	x	2		Includes:				
26	RACE- Needle thrust	58725	x	x	2		BALL- (Not shown)	25527	x	x	1
	RING- Retaining	58319-A	x	x	1	56	FILTER- Oil	A-59009-A	x	x	1
27	ROLLER- Set (31)	A-69054	x	x	1	57	LINE- Pick up	59000	x	x	1
28	ROD- Connecting	A-63477-B	x	x	1	58	LINE- Oil	A-59012	x	x	1
	Includes:						Includes:				
29	BEARING	68512	x	x	1	59	SLEEVE- Compression (1/8)	25301	x	x	2
30	SCREW- Cap soc. hd.	69919	x	x	2	60	NUT- Compression (5/16-24)	25302	x	x	1
31	PISTON & PIN	A-58903-C	x	x	1	61	SCREW- Pan hd. (4-40 x 1/4)	80919	x	x	2
	PISTON & PIN	A-68438	x	x	1						
	Includes:										
32	RING- Retaining	75120	x	x	1						

NOTE 1: Muffler A-59052-A has been superseded by A-94219 Muffler. Replacement studs 59065-B, Baffle 59050, Caps A-63246-1, and Spark Arrestor A-63500-1A are still available.

XL-12 & SXL-AO

Figure 6



No.	Description	Part No.	XL-12	SXL-AO	Qty.
1	GASKET- Spacer	59274	x	x	1
2	SPACER	59718	x	x	1
3	RETAINER- Reed valve	63260-A	x	x	1
4	SEAT- Reed valve	63253	x	x	1
5	VALVE- Reed	59678-B	x	x	4
6	GASKET- Carburetor	59722	x	x	1
7	LINE- Fuel (Note 1)	94772-37	x	x	1
8	CARBURETOR (Note 2)	A-68407-A	x	x	1
		A-69647-A	x	x	1
9	GROMMET	68279	x	x	1
10	COTTER PIN	86324	x	x	1
11	COVER- Air filter	58773-12	x	x	1
12	NUT- Air filter cover	A-65272	x	x	1
13	RING- Retaining	58319-A	x	x	1
14	FILTER ELEMENT	63589-A	x	x	1
15	BRACKET- Mounting	A-59822-A	x	x	1
16	ROD- Choke	A-69650	x	x	1
	Includes:				
17	GROMMET	58362	x	x	1
18	ROD- Throttle	59763	x	x	1
19	SCREW- Hex, 12-24 x 7/8	80891	x	x	5
20	WASHER- Lock, #10	83046	x	x	2
21	SCREW- Hex, 10-32 x 2-11/16	80921	x	x	2

No.	Description	Part No.	XL-12	SXL-AO	Qty.
22	PIN- Throttle latch	58924-4	x	x	1
23	SPRING- Throttle latch	58405	x	x	1
24	COVER- Throttle handle	A-59213-1	x	x	1
	Includes:				
	BUSHING- Pin	59064	x	x	1
25	SCREW- Pan, 8-32 x 1/2	80560	x	x	2
26	TRIGGER- Throttle	58859	x	x	1
27	RING- Retaining	58409	x	x	1
28	THROTTLE HANDLE	A-93926	x	x	1
	Includes:				
29	WASHER- Flat	63290	x	x	1
30	PIN- Cotter	86301	x	x	1
31	BOOT- Throttle rod	67634	x	x	1
32	PLUG	63303	x	x	1
33	SHIELD- Spark plug	93209	x	x	1
	PIN- (Not shown)	94142	x	x	1
34	VALVE- Check	A-59011	x	x	1
35	SCREW- Idle	63302	x	x	1
36	GROMMET- Hi-Lo	59770	x	x	1
37	PLUNGER- Spring	A-93783	x	x	1
	Includes:				
38	SPRING- Compression	59293	x	x	1
39	"O" RING	74388	x	x	1
40	VALVE- Check	A-59818	x		1

NOTE 1: The 63745-A Fuel Line is available for A-58767-C Carburetor.

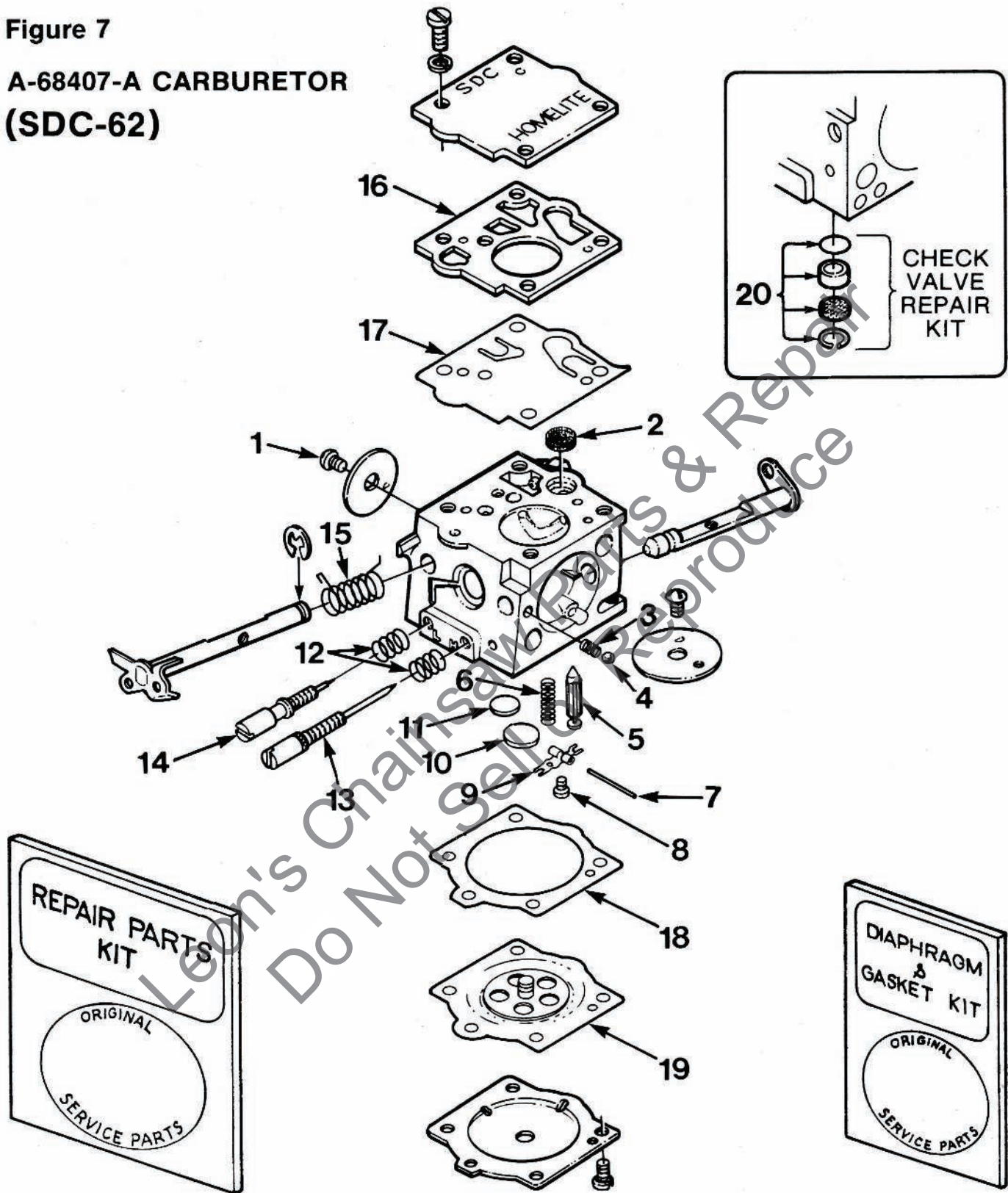
NOTE 2: The A-68363 and A-68407 Carburetors require 68155 Fuel Line, 68046 Grommet and 68279 Grommet.

ALWAYS FURNISH MODEL AND SERIAL NUMBER WHEN ORDERING PARTS.

XL-12 & SXL-AO

Figure 7

A-68407-A CARBURETOR
(SDC-62)

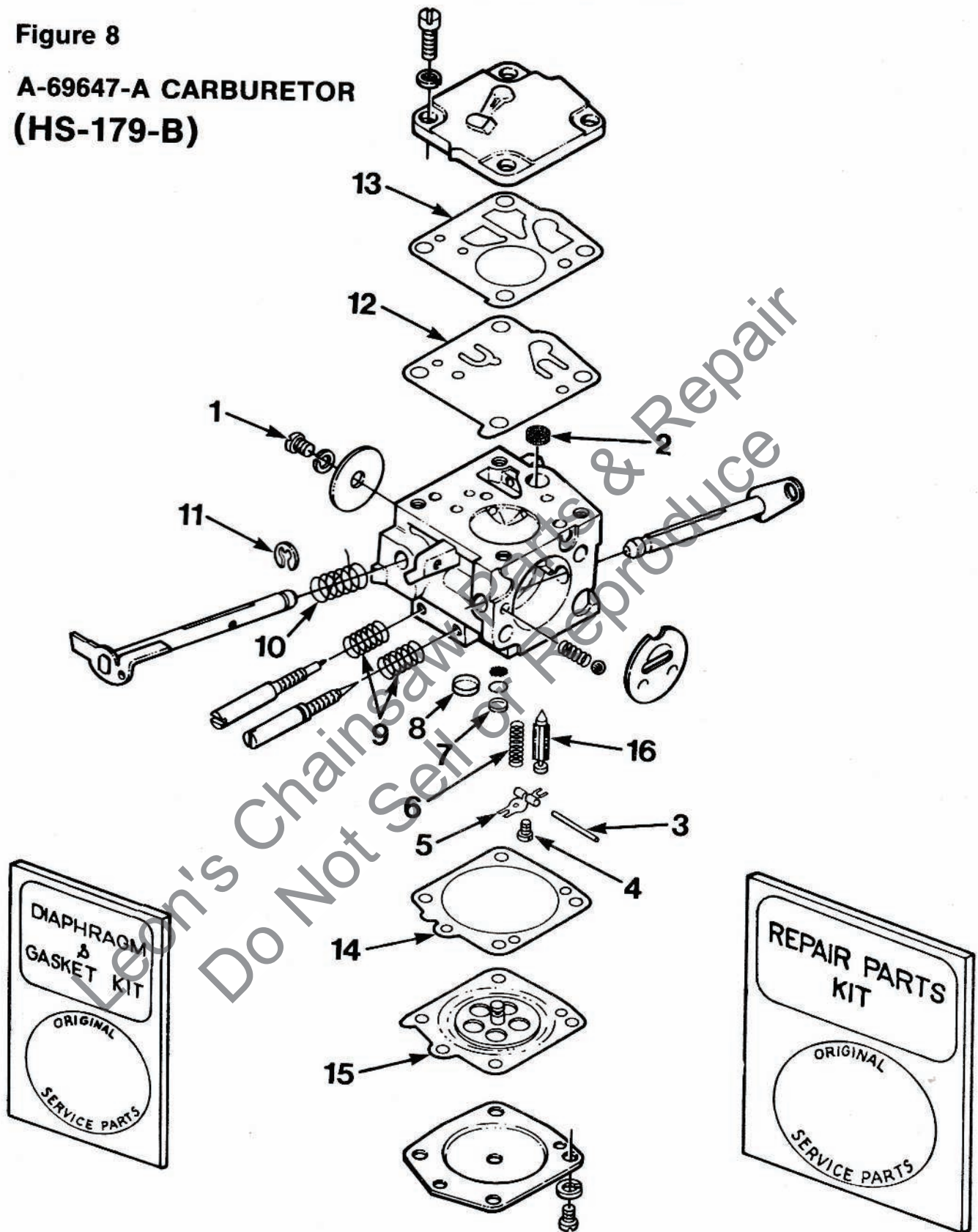


- 67020 REPAIR KIT (1-19)
- 70811 DIAPHRAGM & GASKET KIT (16-19)
- 65386 CHECK VALVE KIT (20)
- 64229 INLET NEEDLE (5)

XL-12 & SXL-AO

Figure 8

A-69647-A CARBURETOR (HS-179-B)



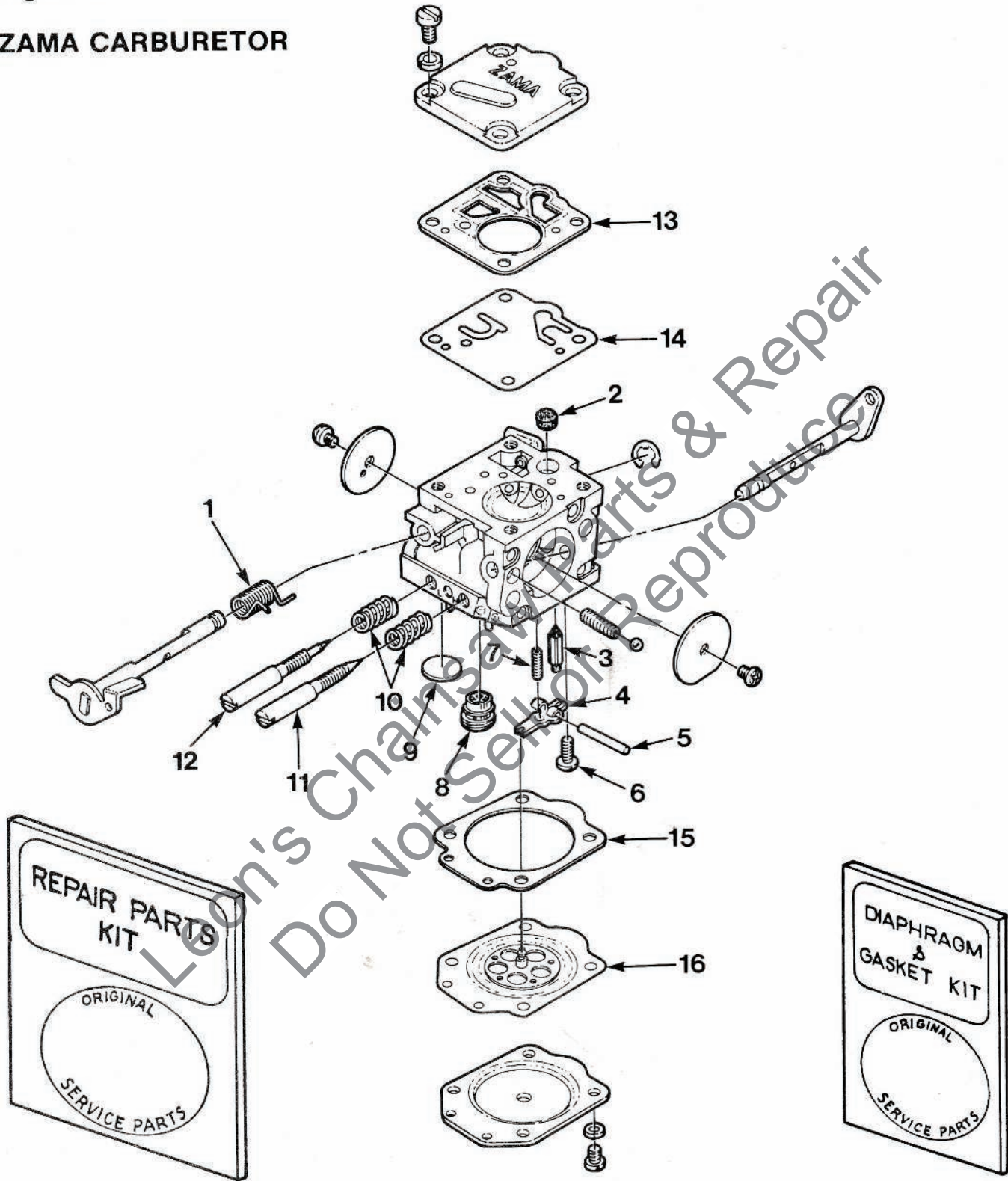
- 67869 REPAIR KIT (1-15)
- 63711 DIAPHRAGM & GASKET KIT (12-15)
- 59717 INLET NEEDLE (16)

ALWAYS FURNISH MODEL AND SERIAL NUMBER WHEN ORDERING PARTS.

XL-12 & SXL-AO

Figure 9

ZAMA CARBURETOR



94954 REPAIR KIT (1-16)

94952 DIAPHRAGM & GASKET KIT (13-16)

XL-12 & SXL-AO

TOOLS FOR XL-12

Description	Part No.
PLIERS- Piston snap ring	22828
PLUG- Bearing assembly & disassembly connecting rod	23756
PLUG- Bearing assembly & disassembly drive & crankcases	23757
PLUG- Bearing installation	23819
PLUG- Seal assembly-drive & crankcase	23758
PLUG- Piston pin removal	A-23949
Includes:	
"O" RING	67900
PULLER- Magneto remover	A-23960
SLEEVE- Seal protecting - crankcase	23759
SLEEVE- Seal installation - drive and crankcase	23800
WRENCH- Hex socket screw (conn. rod)	23528
WRENCH- Spanner to assemble & disassembly clutch	A-23934
Includes:	
PIN	23954

TOOLS FOR SXL-AO

Description	Part No.
ANVIL- Crankshaft	23846-4
COLLAR- Ball bearing installation	22820-1
DRIVER- Check valve (For SDC Carburetor)	24173
JACKSCREW	A-23137
PLIERS- Piston snap ring	22828
PLUG- Bearing assembly & disassembly connecting rod	23756
PLUG- Bearing assembly & disassembly Drive & Crankcase	23757
PLUG- Bearing installation	23819
PLUG- Seal assembly-drive & crankcase	23758
PLUG- Seal installation - drivecase assembly	23845
PLUG- Piston pin removal	A-23949
Includes:	
"O" RING	67900
PULLER- Magneto remover	A-23960
SLEEVE- Bearing & shaft installation	23884-A
SLEEVE- Bearing & shaft installation	23136-2
SLEEVE- Seal protecting	23844
SLEEVE- Seal protecting-crankcase	23759
SLEEVE- Seal installation - drivecase	23843
SLEEVE- Seal installation - drive and crankcase	23800
WRENCH- Hex socket screw (connecting rod)	23528
WRENCH- Spanner to assemble & disassemble clutch	A-23934
Includes:	
PIN	23954
WRENCH- Socket	68651
SCREWDRIVER	24541
WRENCH- Insert	A-24322
TOOL- Clutch removal	A-93791
Includes:	
PIN	23717-A
BIT- Driver-torx 1/4"	
Hex Shank	24982-01
BIT- Driver-torx 5/16"	
Hex Shank	24982-02

ACCESSORIES

Description	Part No.	XL-12	SXL-AO
KIT- Manual oil pump (Prior to s/n 50440501)	A-65868	1	
Includes:			
BUTTON	57289-1	1	
LINE- Oil	A-59819	1	
Includes:			
GROMMET	59794	1	
VALVE- Check	A-59818	1	
Includes:			
BALL	25527	1	
FILTER- Oil (intake)	A-59804-A	1	
PLUNGER	A-57834-10	1	
Includes:			
"O" RING	74388	1	
"O" RING	59074	1	
SPRING	59293	1	
When this KIT is assembled to the unit, the unit will have a complete Manual Oil System.			
KIT- Hand Guard	A-70910	1	
Includes:			
WASHER	58851-2	1	
WASHER	70788	1	
SLEEVE	70911	1	
SCREW- Machine Flat hd.	70926	1	
SCREW	80945	1	
NUT	81225	1	
SCREW	82223	1	
KIT- Hand guard	A-70944	1	
Includes:			
WASHER	58851-2	1	
WASHER	70788	1	
SLEEVE	70911	1	
SCREW	80945	1	
NUT	81225	1	
KIT- Safe•T•Tip	A-70790-A	1	1
Includes:			
SCREW	82335	1	1
UNIVERSAL CARRYING CASE	A-68776	1	1
REEL- Starting rope (250 ft.) #5	57084-1	1	1
KIT- Insert (for Drivecase Guide Bar Studs)	A-70370	1	
TUBING- Rubber 10 ft. (Fuel)	94772-99	1	1
TUBING- Rubber 10 ft. (Oil)	70309-99	1	1

PAINT

Description	Part No.	XL-12	SXL-AO
LACQUER- Red	23475	1	1
LACQUER- Black	22772	1	1

Homelite Division of Textron Inc.
P.O. Box 7047
14401 Carowinds Boulevard
Charlotte, N.C. 28217

Leon's Chainsaw Parts & Repair
Do Not Sell or Reproduce

HOMELITE **TEXTRON**

Homelite Division of Textron Inc.

29721BOZ