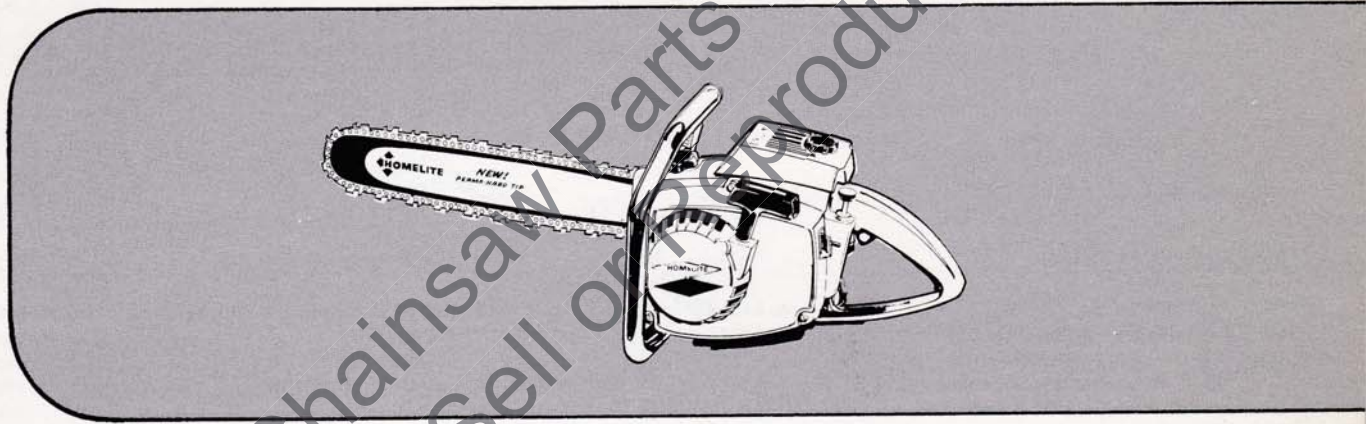


CHAIN SAW PARTS LIST

HOMELITE®



SUPER XL AUTOMATIC



a textron
DIVISION

PORT CHESTER, NEW YORK, U.S.A. 10573

PRICE .25

PART NO. 24228 Rev. 1

PRINTED IN U.S.A.

SUPER XL AUTOMATIC

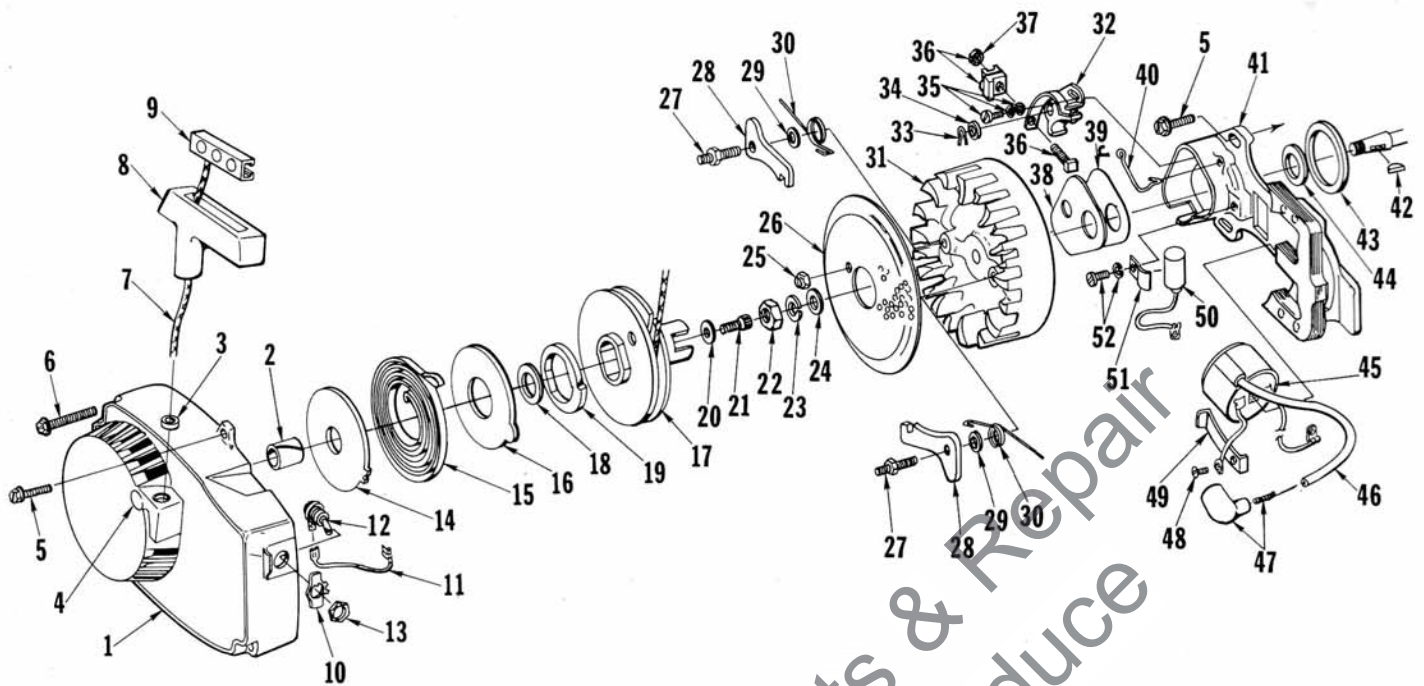


FIGURE 1

No.	Description	Part No.	Qty.	No.	Description	Part No.	Qty.
1	HOUSING-fan	A-64518	1	32	POINT SET-w/felt & terminal block	(P) A-59861	1
2	Includes: BUSHING-starter	64442	1		POINT-w/felt	(W) A-58914	1
3	BUSHING-rope	67177	1	33	Includes: COTTER PIN	(W) 28008	1
4	DRIVE STUD	59067	1	34	WASHER	(W) 28028	as req'd
5	SCREW-hex, 12-24 x 5/8	80676	4	35	SCREW GROUP-points	(W) 76421	1
6	SCREW-hex, 12-24 x 1-11/16	58963	3		SCREW GROUP-points	(P) 57749	1
7	ROPE-starter	58806	1	36	TERMINAL BLOCK GROUP	(W) A-58934	1
8	GRIP-rope	58915	1	37	NUT (only)-terminal	(P) 55982	1
9	INSERT	58847	1	38	COVER-breaker box	(W) 58811	1
10	PLATE-"On-Off"	72085-A	1		COVER-breaker box	(P) 59864	1
11	LEAD-ground w/terminal	A-59031	1	39	GASKET-cover	(W) 58810	1
12	SWITCH	A-57650-3	1		GASKET-cover	(P) 59865	1
13	Includes: NUT	72084-A1	1	40	CLIP-cover	(W) 76413	1
14	SHIELD-spring (inner)	59638-A	1		CLIP-cover	(P) 59866	1
15	SPRING-recoil	58764-A	1	41	BOX-breaker	(W) 58875-A	1
16	SHIELD-spring (outer)	59639-A	1		BOX-breaker	(P) 59859	1
17	PULLEY-starter	A-64446	1	42	KEY-rotor	75078	1
18	Includes: BUSHING-spring	64400		43	GASKET	59538	1
19	LOCK-spring	64049-A	1	44	SEAL-felt	59760	1
20	WASHER-retaining	58763	1	45	COIL	(W) 58874	1
21	SCREW-hex, 10-32 x 1/2	80648	1		COIL	(P) 59860	1
22	NUT-hex, 5/16-24	81117	1	46	LEAD-hi tension	58966	1
23	WASHER-lock, 5/16	83002	1	47	TERMINAL	A-33055	1
24	WASHER-flat, 5/16	84056	1	48	SCREW-coil clip	(W) 64090	1
25	NUT-Flexloc, #10-32	81109-2	2		SCREW-coil clip	(P) 55977	1
26	SCREEN-starter	58765	1	49	CLIP-coil retaining-	(W) 63726	1
27	STUD-pawl	58757-B	2		CLIP-coil retaining	(P) 59863	1
28	PAWL-starter	58756	2	50	CONDENSER-w/clamp	(P) 59862	1
29	WASHER	58851	2		CONDENSER	(W) 63250	1
30	SPRING-starter pawl	58758	2	51	CLAMP-condenser	(W) 59622	1
31	ROTOR-magneto	(W) 58809	1	52	SCREW GROUP-condenser	(W) 30261	1
	ROTOR-magneto	(P) 59857	1		SCREW GROUP-condenser	(P) 57750	1

(W) Wico (P) Phelon

Wico and Phelon parts are not interchangeable.

SUPER XL AUTOMATIC

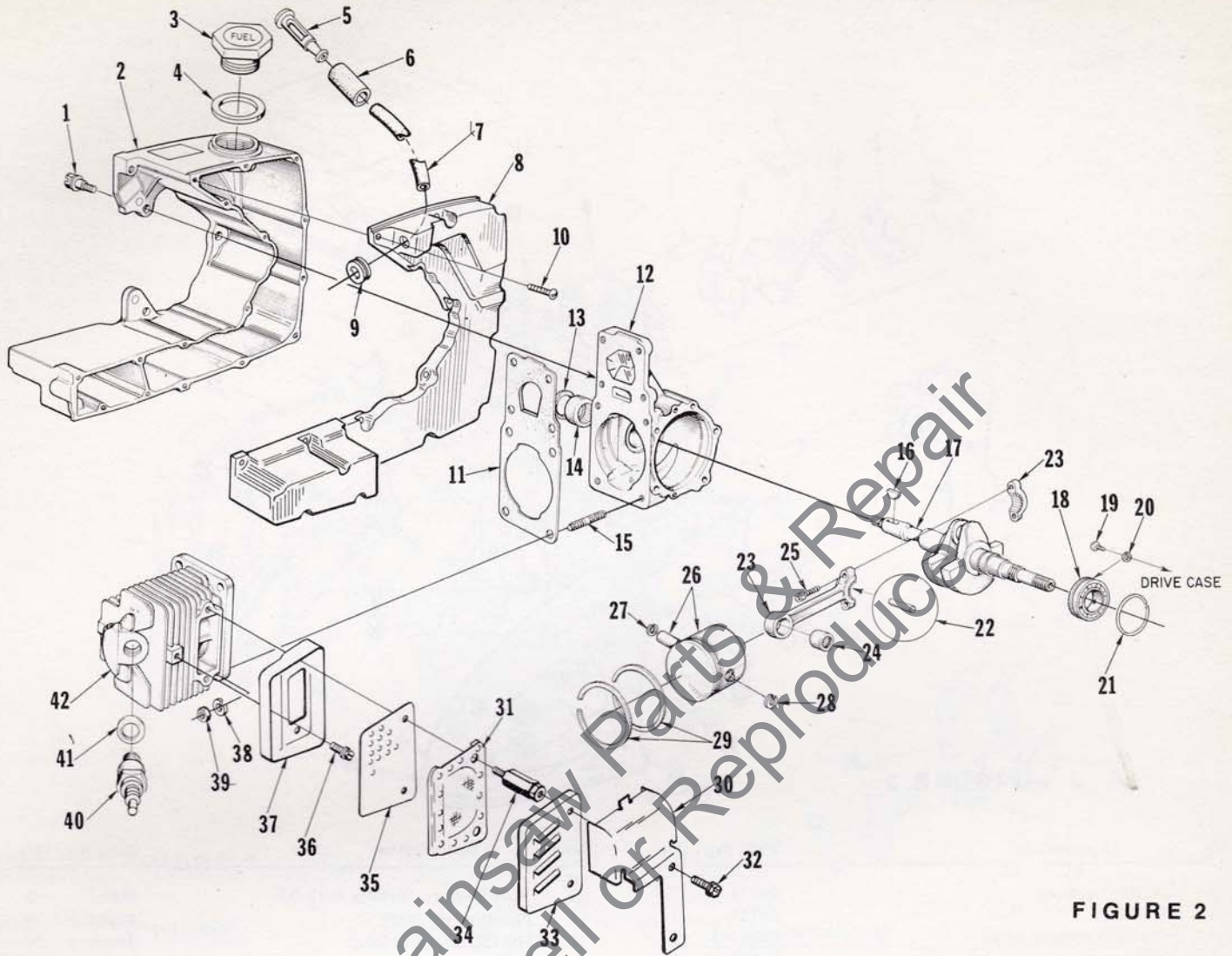


FIGURE 2

No.	Description	Part No.	Qty.	No.	Description	Part No.	Qty.
1	SCREW-shoulder	63407	3	22	ROLLER-set (31)	A-63496	1
2	TANK-fuel	A-68396	1	23	ROD-connecting	A-63477	1
3	CAP-fuel filler	A-65283-B	1	24	BEARING	58724	1
4	GASKET	68961	1	25	SCREW-socket, 8-32 x 1/2	80541	2
5	FILTER-fuel	A-59251	1	26	PISTON & PIN	A-59468-C	1
6	FILTER-felt	59253-1	1	27	RING-retaining	75120	1
7	LINE-fuel	68155	1	28	RING-retaining	64813	1
8	COVER-fuel tank (Note 1)	63739-2	1	29	PISTON RING	59436	2
9	GROMMET	68046	1	30	EXCHANGER-heat (accessory)	A-63321	1
10	SCREW-rd., #6 x 1/2	80513	16	31	ARRESTOR-spark (accessory) (Note 2)	A-63500	1
11	GASKET-cylinder	59771	1	32	MUFFLER-can type	A-68748	1
12	CRANKCASE	A-58799-D	1	33	SCREW-hex, 10-32 x 9/16	80825	2
13	SEAL	58688-A	1	34	CAP-muffler	A-63246	1
14	BEARING	58956	1	35	STUD	59891-B	2
15	STUD	55871	4	36	BAFFLE	59050	1
16	KEY-rotor	75078	1	37	SCREW-hex hd., 12-24 x 1/2	80821	1
17	CRANKSHAFT	63498	1	38	BODY-muffler	A-59895-A	1
18	BEARING-ball	58190-S	1	39	WASHER-lock, 1/4	83009	4
19	SCREW-bearing retainer	59704	2	40	NUT-1/4-28	81065-2	4
20	WASHER-lock	59705	2	41	SPARK PLUG	63547-S	1
21	RING-retaining	58319-A	1	42	CYLINDER	58706-B1	1

NOTE 1 - 59693-3 Fuel Tank Cover is still available for older units.

NOTE 2 - Use #63503 Shim (.030) under Muffler Studs with Spark Arrestor.

SUPER XL AUTOMATIC

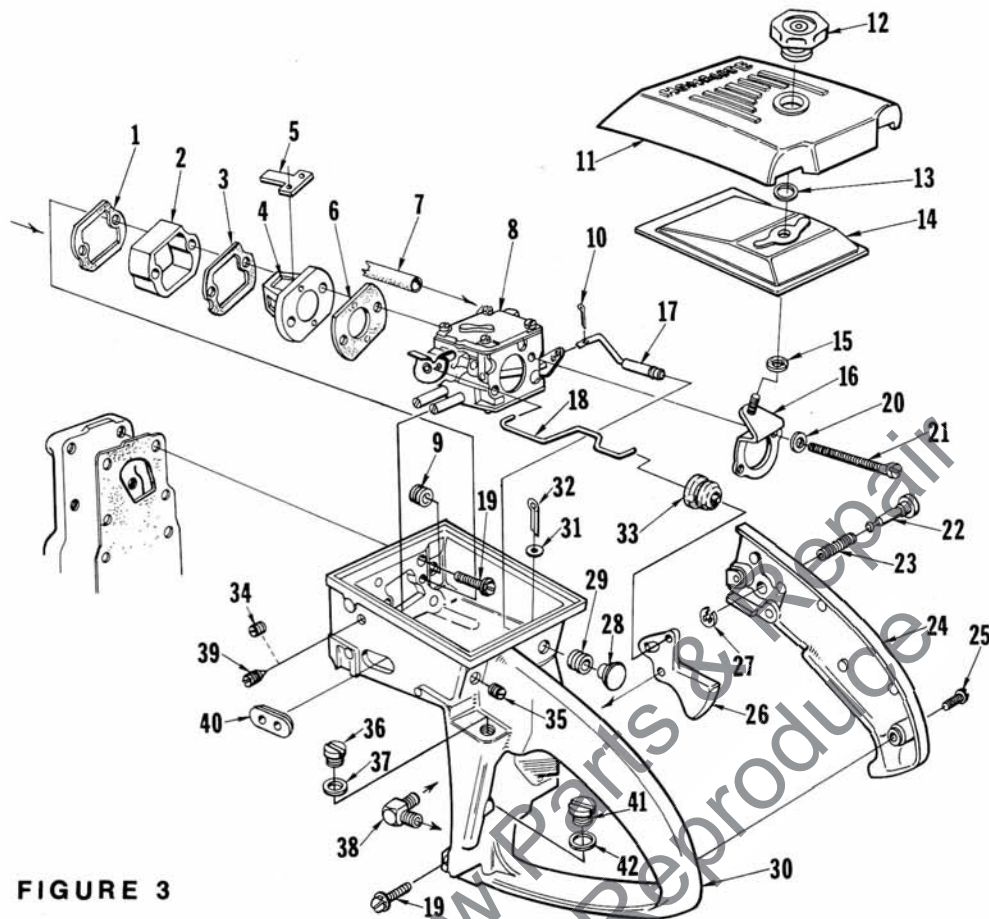


FIGURE 3

No.	Description	Part No.	Qty.	No.	Description	Part No.	Qty.
1	GASKET-spacer	59274	1	21	SCREW-hex, 10-32 x 2-11/16	80921	2
2	SPACER	59718	1	22	PIN-throttle latch	58924-4	1
3	RETAINER-reed valve	63260-A	1	23	SPRING-throttle latch	58405	1
4	SEAT-reed valve	63253	1	24	COVER-throttle handle	A-59213	1
5	VALVE-reed	59678-B	1		Includes: BUSHING-pin	59064	1
6	GASKET-carburetor	59722	1	25	SCREW-pan, 8-32 x 1/2	80560	2
7	LINE-fuel (Note 1)	68155	1	26	TRIGGER-throttle	58859	1
8	CARBURETOR (Note 2)	A-68363	1	27	RING-retaining	58409	1
	CARBURETOR	A-68407	1	28	BUTTON-choke rod	57289-1	1
	Includes:			29	GROMMET	58362	1
	GROMMET (See Fig. 2)	68046	1	30	THROTTLE HANDLE	A-67840	1
9	GROMMET	68279	1		Includes:		
	LINE-fuel (index #7)	68155	1	31	WASHER-felt	63290	1
10	COTTER PIN	86324	1	32	COTTER PIN	86301	1
11	COVER-air filter	58773-5	1	33	BOOT-throttle rod	67634	1
12	NUT-air filter cover	A-65272	1	34	PLUG	63303	1
13	RING-retaining	58319-A	1	35	PLUG	63310	1
14	FILTER ELEMENT	63589	1	36	PLUG (Note 3)	59798-2	1
15	GASKET-mounting stud	58392-1	1	37	GASKET (Note 3)	59799	1
*16	BRACKET-mounting	A-59822-A	1	38	VALVE-check	A-59011	1
17	ROD-choke	A-59826	1	39	SCREW-idle (Note 4)	63302-A	1
18	ROD-throttle	59763	1	40	GROMMET-Hi-Lo	59770	1
19	SCREW-hex, 12-24 x 7/8	80891	5	41	CAP-check valve	65143	1
20	WASHER-lock, #10	83046	2	42	GASKET-check valve cap	65144	1

* Denotes New Parts

Note 1 - The 63745 Fuel Line is available for A-58767-C and A-65962 Carburetors

Note 2 - The A-68363 and A-68407 Carburetors require 68155 Fuel Line, 68406 Grommet and 68279 Grommet.

Note 3 - Index numbers 36 Plug and 37 Gasket must be removed when A-65868 Manual Oil Pump Kit is assembled to the unit.

Note 4 - The A-58767-C Carburetor is supplied with idle stop screw and spring (internal adjustments only); when either external adjustment screw 63302-A or 59916 is used (see Plugs below), discard internal adjustment screw and spring. Refer to Carburetor Parts List 23766-C, use Repair Kit 67869 and Gasket Set 67866.

PLUGS - Use 63303 screw plug in tapped hole for index #39.

SUPER XL AUTOMATIC

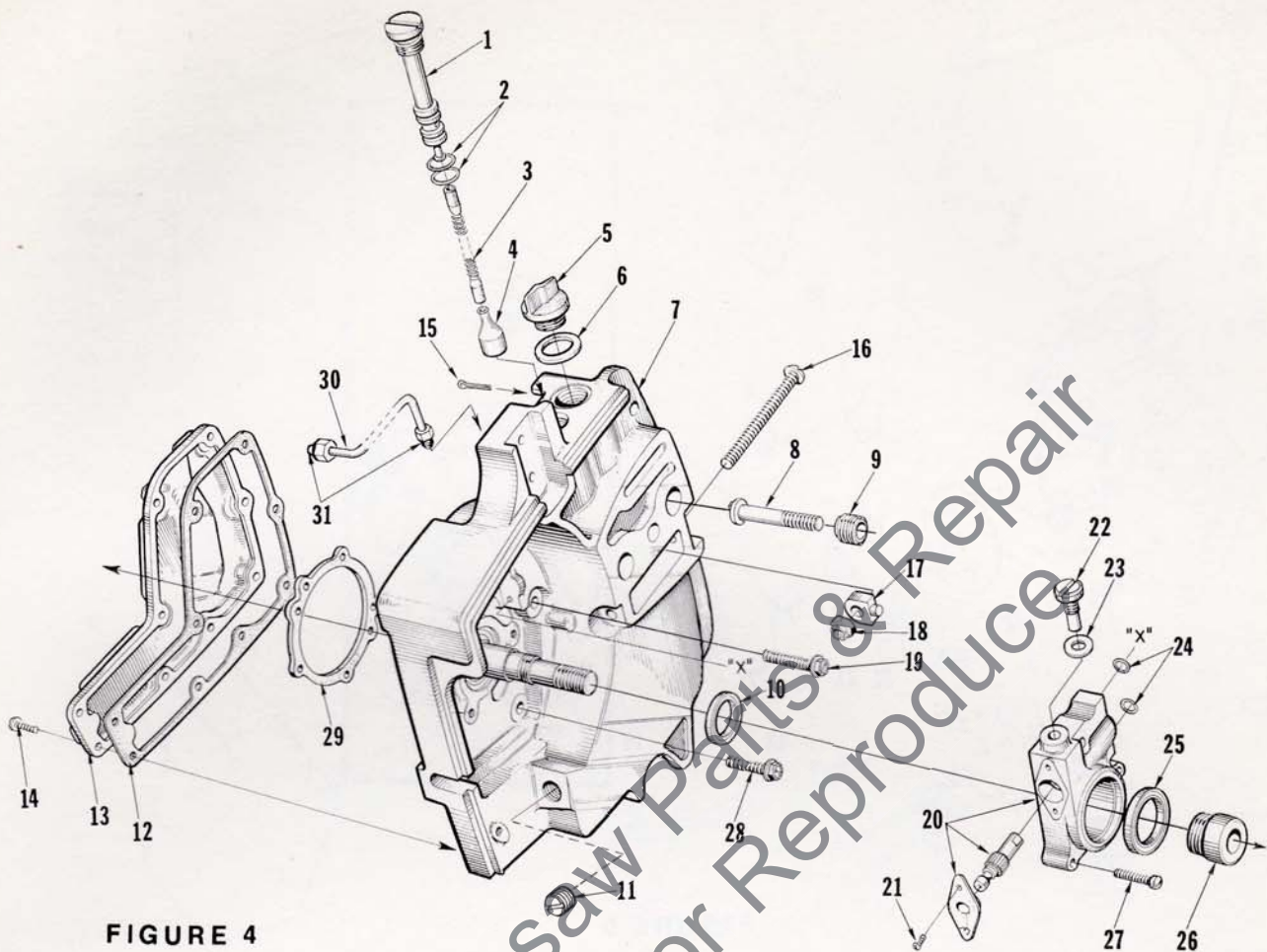


FIGURE 4

No.	Description	Part No.	Qty.	No.	Description	Part No.	Qty.
1	TUBE-oil line	59325-1	1	16	SCREW-guide bar adjusting	63225	1
2	"O" RING	59765	2	17	PIN-bar adjusting (Note 2)	67586-1A	1
3	LINE-oil	59674	1	18	NUT-lock, 1/4-20	81108	1
4	FILTER-oil	A-58828	1	19	SCREW-hex, 12-24 x 1	80864	1
5	CAP-filler oil	A-63717-A	1	20	PUMP-automatic oil	A-59809-A	1
	Includes:				Includes:		
6	GASKET	56607	1	21	SCREW-pan, 4-40 x 1/4	80919	2
	VALVE-check (not shown)	63718	1	22	SCREW-cam	64102-A	1
7	DRIVECASE	A-59930-E	1	23	GASKET	59736	1
	Includes:			24	"O" RING	59074	2
8	STUD-guide bar, 3/8"			25	SEAL-felt	59926	1
	(See Note 1)	67475	2	26	WORM	59675	1
9	INSERT-threaded (Note 1)	67476	2	27	SCREW-fil, 8-32 x 3/4	80248	3
10	SEAL	58308-A	1	28	SCREW-hex, 12-24 x 9/16	80899	4
11	PLUG	28097	1	29	GASKET	63355	1
12	GASKET-oil reservoir	59710	1	30	LINE-oil (discharge)	A-59806	1
13	COVER-oil reservoir	59649-4A	1		Includes:		
14	SCREW-rd., 6-32 x 1/2	80513	9	31	SLEEVE-compression	25301	2
15	COTTER PIN	86301	1				
	CAP-check valve (not shown)	65143	1				
	GASKET-check valve cap (not shown)	58338	1				

Note 1 - When using 59764-A Stud. (5/16") and 59896-A Insert, Guide Bar Plates 58781 (inner) and 58782 (outer) must be used.

Note 2 - 58783-1 Pin must be used with 5/16" round hole Guide Bar and 67586-1 Pin must be used with rectangular hole Guide Bar.

SUPER XL AUTOMATIC

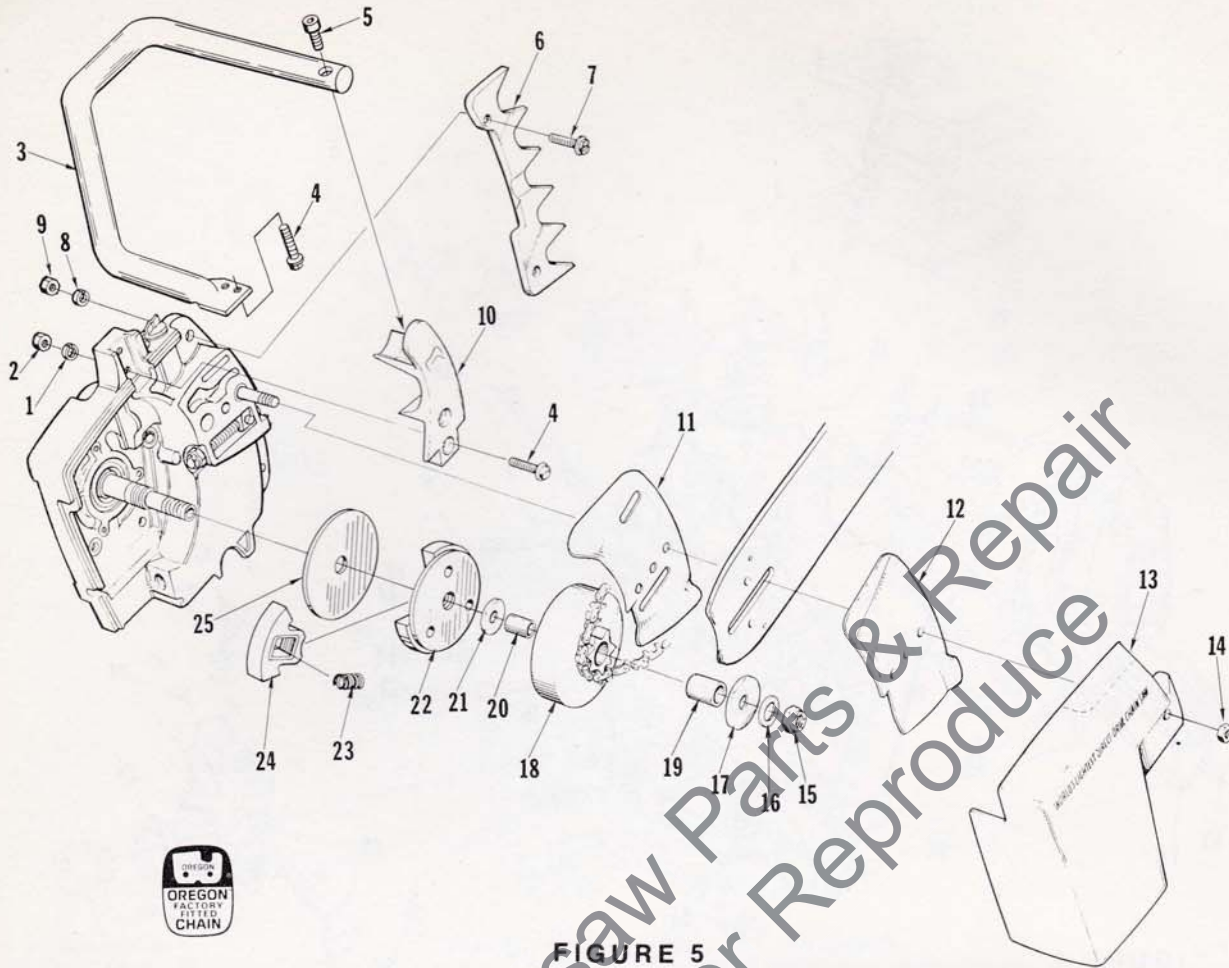


FIGURE 5

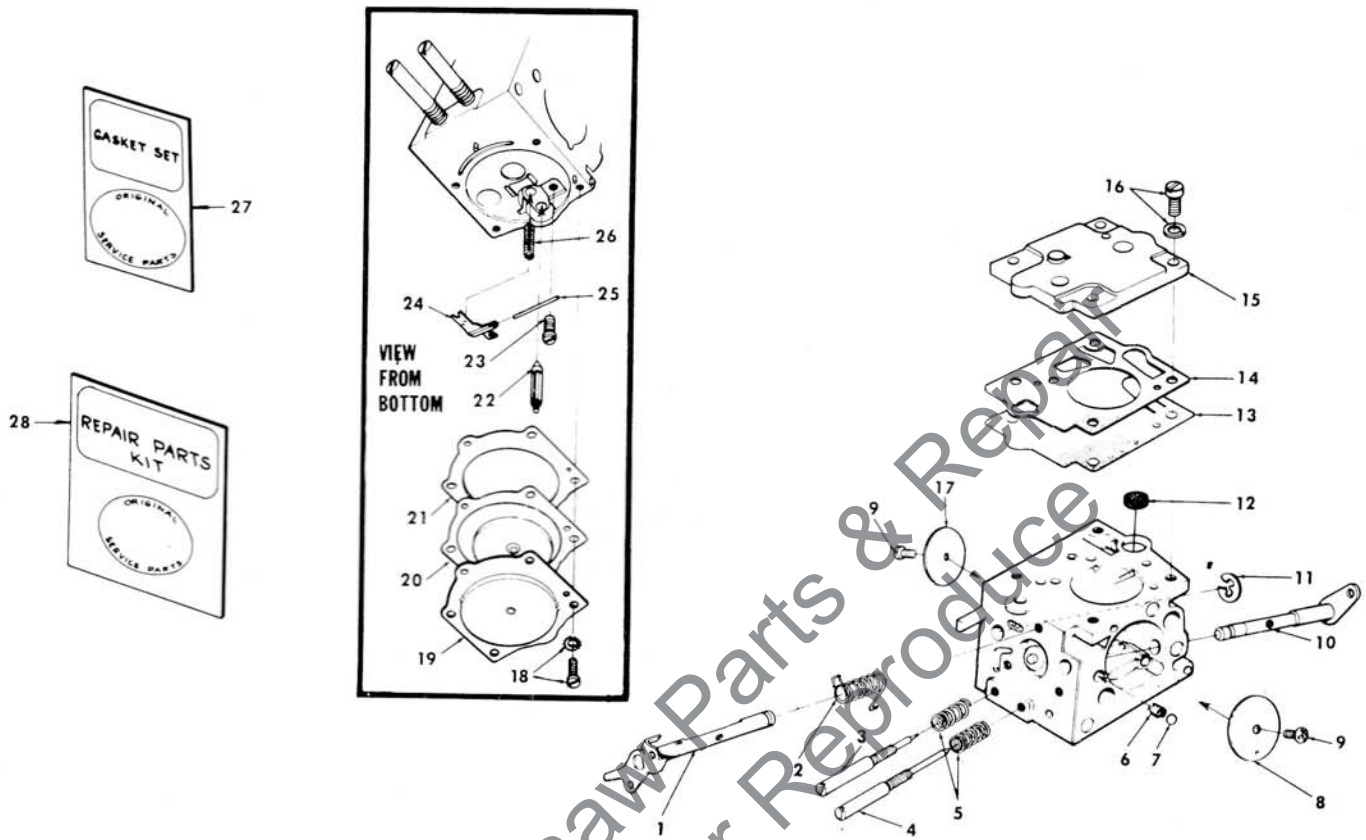
No.	Description	Part No.	Qty.	No.	Description	Part No.	Qty.
1	WASHER-lock, #12	63053	2	18	SPROCKET & DRUM (Note 3)		
2	NUT-hex, 12-24	81068	2		standard - 3/8" pitch, 7 tooth	A-59552	1
3	HANDLE BAR-flush cut	A-59790	1		optional - 3/8" pitch, 8 tooth	A-63346	1
	KIT-wrap-around handle bar (accessory)				.404 pitch, 7 tooth	A-59555	1
	(Note 1)	A-63422	1	19	Includes: BEARING-needle	72311	1
	Includes:				KIT-hub & drum (accessory)	A-67090	1
	HANDLE BAR	A-63421	1		Includes:		
	BRACKET-handle bar	59651-6	1		rim type (not shown)		
	BRACKET-drivecase	63405	1		HUB & DRUM-"Splined"	A-65990	1
	SCREW-hex hd, 12-24 x 5/8	80676	1		BEARING-needle (cage)	64124	1
4	SCREW-hex, 12-24 x 3/4	80867	4		RACE-inner	65746	1
5	SCREW-socket	80428	1		WASHER-thrust (outer)	58833	1
6	BUMPER KIT-spiked (accessory)	A-59043	1		SPROCKET-splined (accessory not shown)		
	Includes:				rim type - 3/8" pitch, 7 tooth	OM-68210	1
7	SCREW-hex, 12-24 x 3/4	80867	2		.404 pitch, 7 tooth	OM-10513	1
8	WASHER-lock, #12	83056	2	20	RACE-inner	55584	1
9	NUT-hex, 12-24	81068	2	21	WASHER-thrust (inner)	58833	1
10	BRACKET-handle bar	59651-1	1		CLUTCH & COVER	A-63608	1
11	PLATE-guide bar (inner) (Note 2)	67509	1		Includes:		
12	PLATE-guide bar (outer) (Note 2)	67510	1	22	PLATE-clutch	63053-1	1
13	COVER-drivecase	58750-2	1	23	SPRING-clutch	63034	3
14	NUT-hex, 3/8-16	81089-2	2	24	SHOE-clutch	63052	3
15	NUT-lock, 3/8-24	81192	1	25	COVER-clutch	63051	1
16	WASHER-flat, 3/8	84010	1				
17	WASHER-thrust (outer)	58926	1				

Note 1 - A-63421 HANDLE BAR requires 59651-6 Bracket to replace index #10, and another 63405 Bracket which mounts on drivecase cover. 80676 Screw attaches drivecase cover bracket to handle bar.

Note 2 - When using 67509 Guide Bar Plate (inner) and 67510 Guide Bar Plate (outer) 67475 Guide Bar Stud, (3/8") and 67476 Insert must be used.

Note 3 - Check type and number of teeth before ordering. "Splined" Hub & Drum requires one of the "Splined" sprockets listed.

SUPER XL AUTOMATIC



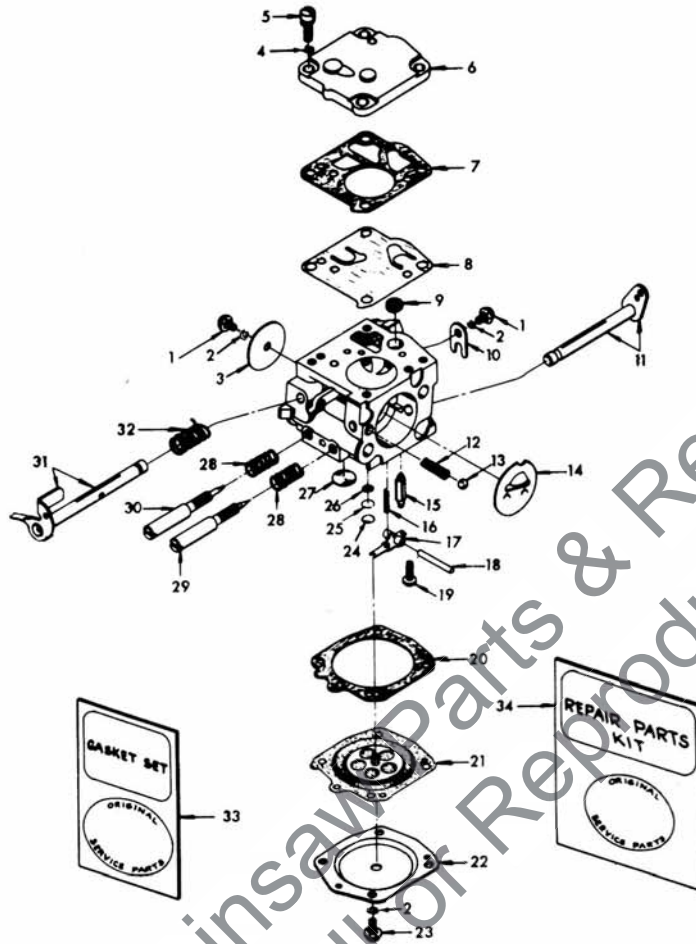
A-68407 (SDC-29)

No.	Description	Part No.	Qty.	No.	Description	Part No.	Qty.
1	THROTTLE SHAFT ASSEMBLY	67007	1	17	SHUTTER-throttle	67003	1
2	SPRING-throttle return	† 67006	1	18	SCREW ASSEMBLY	64689	4
3	NEEDLE-idle	† 67004	1	19	COVER-metering diaphragm	64224	1
4	NEEDLE-high speed	† 67011	1	20	DIAPHRAGM-main control	† 64235	1
5	SPRING-needle adjusting	† 64236	2	21	GASKET-metering diaphragm	† 64231	1
6	SPRING-choke friction	64238	1	22	NEEDLE-inlet	64229	1
7	BALL-choke friction	60051	1	23	SCREW-metering lever pin	† 64688	1
8	SHUTTER-choke	64228	1	24	LEVER-metering	64245	1
9	SCREW-valve	† 64693	2	25	PIN-control lever fulcum	† 64244	1
10	CHOKE SHAFT ASSEMBLY	64227	1	26	SPRING-metering lever	† 67005	1
11	RING-throttle shaft retaining	64221	1	27	GASKET SET	67019	1
12	SCREEN-fuel inlet	† 64243	1	28	REPAIR KIT	67020	1
13	DIAPHRAGM-fuel pump	† 64233	1		REPAIR KIT-check valve (not shown)		
14	GASKET-fuel pump	† 67008	1		(Note 1)	65386	1
15	COVER-fuel pump	67002	1		FUEL LINE-shown on Figures 2 & 3	68155	1
16	SCREW-fuel pump cover	64694	4		GROMMET-shown on Figure 2	68046	1
					GROMMET-shown on Figure 3	68279	1

† Included in Repair Kit

Note 1 - Accessory 24173 Driver-check valve installation is used with 65386 Repair Kit.

SUPER XL AUTOMATIC



A-68363 (HS-96A)

No.	Description	Part No.	Qty.	No.	Description	Part No.	Qty.
1	SCREW-rd. hd., 4-40 x 3/16	80264	2	18	PIN-control lever fulcum	58977	1
2	WASHER-lock, #4	83008-1	6	19	SCREW-pan hd., 4-40 x 5/16	58992	1
3	THROTTLE SHUTTER	25050	1	20	GASKET-main diaphragm	58978	1
4	WASHER-lock, #6	83024	4	21	DIAPHRAGM-main control	58988	1
5	SCREW-fil., 6-32 x 3/8	80275	4	22	COVER-diaphragm	58979	1
6	COVER-pump	58975	1	23	SCREW-rd. hd., 4-40 x 1/4	80591	4
7	GASKET-fuel pump	58981	1	24	PLUG-Welch 3/16, aluminum	58994	1
8	DIAPHRAGM-fuel pump	58980-R	1	25	RING-retaining	57819	1
9	SCREEN-fuel inlet	58974	1	26	SCREEN-channel	59500	1
10	CLIP-throttle shaft	58982	1	27	PLUG-Welch, 11/32	58991	1
11	CHOKE SHAFT & LEVER	58990	1	28	SPRING-adjusting needle	73075	2
12	SPRING-choke friction	73264	1	29	NEEDLE-main adjusting	58986	1
13	BALL-choke friction	25527	1	30	NEEDLE-idle adjusting	58985	1
14	SHUTTER-choke	58984	1	31	THROTTLE	A-63345	1
15	NEEDLE-inlet	59717	1	32	SPRING-throttle return	59460	1
16	SPRING-control lever	55759	1	33	GASKET SET	67866	1
17	LEVER-inlet control	59716	1	34	REPAIR KIT	67869	1

A-68363 carburetor replaces A-58767-C on units above S/N 3351316 and is an alternate for A-68407 (SDC-29).

SUPER XL AUTOMATIC

Tools

23846-4	ANVIL-crankshaft installation
22820-1	COLLAR-ball bearing installation
24173	DRIVER-check valve
A-23137	JACKSCREW
22828	PLIERS-piston snap ring
23756	PLUG-bearing assembly & disassembly-conn. rod
23757	PLUG-bearing assembly & disassembly-drive & crankcases
23819	PLUG-bearing installation
23758	PLUG-seal assembly-drive and crankcases
23845	PLUG-seal installation-drivecase assembly
A-23949	PLUG-piston pin removal
A-23960	PULLER-magneto remover
23884-A	SLEEVE-bearing & shaft installation
23163-2	SLEEVE-bearing & shaft installation
23844	SLEEVE-seal protecting
23759	SLEEVE-seal protecting -crankshaft
23843	SLEEVE-seal installation-drivecase
23800	SLEEVE-seal installation-drive & crankcases
A-23937-B	WRENCH-combination
23528	WRENCH-hex socket screw (conn. rod)
A-23841-A	WRENCH-insert (guide bar stud)
A-23422	WRENCH-insert 3/8" (guide bar stud)
A-23934	WRENCH-spanner to assemble & disassemble clutch

Paint

24453	LACQUER-"70" blue
24101	SPRAY CAN-blue
23560	SPRAY CAN-white

SUPER XL AUTOMATIC

Accessories

KIT-manual oil pump	A-65868
Includes: BUTTON	57289-1
LINE-oil	A-59819
Includes: GROMMET	59794
VALVE-check	A-59818
Includes: BALL	25527
FILTER-oil (intake)	A-59804
Includes: FILTER	A-55259-A
PLUNGER	A-57834-10
Includes: "O" RING	74388
"O" RING	59074
SPRING	59293

When this KIT is assembled to the unit, the unit will have a complete Manual Oil System.

KIT-muffler & noise suppressor A-63434-A
 (When Spark Arrestor & Noise Suppressor are used together use 63503-1 Shim (.060) under Muffler Studs.

Includes: BODY-muffler	A-59895-A
CAP-muffler	A-63246
STUD-muffler	59891-B (2)
SCREW-hex hd., 10-32 x 9/16	80825 (2)
SCREW-pan hd., 12-24 x 1/2	80963
SUPRESSOR-noise	A-63080
Includes: SCREW- pan, 8-32 x 3/8	80939 (4)

KIT-Locktite	23488-B
UNIVERSAL CARRYING CASE	A-68776
KIT-filter	A-24268
KIT-guide bar plate, 5/16	A-24275
KIT-guide bar plate, 3/8	A-24330
KIT-ignition (Phelon)	A-24272
KIT-ignition (Wico)	A-24271
KIT-starter rope	A-24266
REEL-starting rope (250 ft.)	57084-1

SUPER XL AUTOMATIC

Part No.	Description	Qty.	Part No.	Description	Qty.	Part No.	Description	Qty.	Part No.	Description	Qty.
OM-10513	Sprocket	1	58833	Washer-inner	1	A-59826	Rod-choke	1	67002	Cover-pump	1
22820-1	Collar-bearing	1	58847	Insert	1	59857	Rotor-magneto	1	67003	Shutter-throttle	1
22828	Pliers	1	58851	Washer	2	59859	Box-breaker	1	67004	Needle-idle	1
A-23137	Jackscrew	1	58859	Throttle-trigger	1	59860	Coil	1	67005	Spring	1
23163-2	Sleeve	1	58874	Coil	1	A-59861	Point Set	1	67006	Spring-throttle	1
A-23422	Wrench-insert	1	58875-A	Box-breaker	1	59862	Condenser-w/clamp	1	67007	Throttle Shaft	1
23488-B	Kit-Loctite	1	A-58914	Point Set	1	59863	Clip-coil retaining	1	67008	Gasket-pump	1
23528	Wrench	1	58915	Grip-rope	1	59864	Cover-breaker box	1	67011	Needle	1
23560	Spray Can-white	1	58924-4	Pin-throttle	1	59865	Gasket-cover	1	67019	Gasket Set	1
23756	Plug-conn. rod	1	58926	Washer-outer	1	59866	Spring-cover (clip)	1	67020	Kit-repair	1
23757	Plug-bearing	1	A-58934	Block Group	1	59891-B	Stud	2	A-67090	Kit-hub & drum	1
23758	Plug-installation	1	58956	Bearing	2	A-59895-A	Body-muffler	1	67177	Bushing-rope	1
23759	Sleeve-crankcase	1	58963	Screw-hex	3	59926	Seal-felt	1	67475	Stud-guide bar	2
23800	Sleeve-crankcase	1	58966	Lead	1	A-59930-E	Drivcase	1	67476	Insert-threaded	2
23819	Plug-needle	1	58974	Screen	1	60051	Ball-choke friction	1	67509	Plate-inner	1
A-23841-A	Wrench-insert	1	58975	Cover-pump	1	63034	Spring-clutch	3	67510	Plate-outer	1
23843	Sleeve-drivcase	1	58977	Pin-fulcrum	1	63051	Cover-clutch	1	67586-1A	Pin-bar adj.	1
23844	Sleeve-drivcase	1	58978	Gasket	1	63052	Shoe-clutch	3	67634	Boot-throttle rod	1
23845	Plug-drivcase	1	58979	Cover-diaphragm	1	63053-1	Plate-back clutch	1	A-67840	Throttle Handle	1
23846-4	Anvil	1	58980-R	Diaphragm	1	A-63080	Suppressor-noise	1	67866	Gasket Set	1
23884-A	Sleeve	1	58981	Gasket	1	63225	Screw-pin	1	67869	Kit-repair	1
A-23934	Wrench-spanner	1	58982	Clip-throttle	1	A-63246	Cap-muffler	1	68046	Grommet	1
A-23937-B	Wrench-comb.	1	58984	Shutter-choke	1	63250	Condenser	1	68119	Label-chain	1
A-23949	Plug-piston pin	1	58985	Needle-idle adj.	1	63253	Seat-reed valve	1	68155	Line-fuel	1
A-23960	Puller	1	58986	Needle-main adj.	1	63260-A	Retainer-reed valve	1	OM68210	Sprocket	1
24101	Spray Can-blue	1	58988	Diaphragm-main	1	63290	Felt	1	68279	Grommet	1
24173	Driver	1	58990	Choke Shaft	1	63302-A	Screw-idle	1	A-68363	Carburetor	1
A-24266	Kit-starter rope	1	58991	Plug-Welch	1	63303	Plug	1	A-68396	Tank-fuel, oil	1
A-24268	Kit-filter	1	58992	Screw	1	63310	Plug	1	A-68407	Carburetor	1
A-24271	Kit-ignition	1	58994	Plug-Welch	1	A-63321	Exchanger-heat	1	A-68748	Muffler	1
A-24272	Kit-ignition	1	A-59011	Valve-check	1	A-63345	Throttle	1	A-68776	Case-carrying	1
A-24275	Kit-guide bar	1	A-59031	Lead-ground	1	A-63346	Sprocket & Drum	1	68961	Gasket	1
A-24330	Kit-guide bar	1	A-59043	Kit-bumper	1	63353	Gasket	1	72084-A1	Nut-hex	1
24453	Lacquer-"70"blue	1	59050	Baffle	1	63405	Bracket-drivcase	1	72085-A	Plate-on-off	1
25038	Gasket	1	59064	Bushing-pin	1	63407	Screw-hex	3	72311	Bearing-needle	1
25050	Throttle Shutter	1	59067	Drive Stud	1	A-63421	Handle Bar	1	73075	Spring	2
25301	Sleeve	2	59074	"O" Ring-shaft	1	A-63422	Kn-handle bar	1	73264	Spring	1
25527	Ball-choke friction	1	A-59213	Cover-handle	1	A-63424	Kit-noise suppressor	1	74388	"O" Ring	1
28008	Cotter Pin	1	A-59251	Filter-fuel	1	A-63477	Rod-connecting	1	75078	Key-rotor	1
28028	Washer-point	1	59253-1	Filter-felt	1	A-63486	Rollers-needle	1	75120	Ring-retaining	1
28097	Plug	1	59274	Gasket-spacer	1	63488	Crankshaft	1	76413	Spring-cover	1
30261	Screw Group	1	59293	Spring-plunger	1	A-63506	Spark Arrestor	1	76421	Screw Group	1
A-33055	Terminal	1	59325-1	Tube-oil line	1	63547-S	Spark Plug	1	FASTENING PARTS		
A-55259-A	Filter	1	59436	Piston Ring	2	63589	Element-air filter	1	80248	8-32 x 3/4	3
55584	Race-inner	1	59460	Spring-throttle	1	A-63608	Clutch & Cover	1	80264	4-40 x 3/16	2
55759	Spring-inlet	1	A-59468-C	Piston & Pin	1	A-63717-A	Cap-filler oil	1	80275	6-32 x 3/8	4
55871	Stud	4	59500	Screen-channel	1	63718	Valve-vent	2	80428	1/4-20 x 1	1
55977	Screw-coil clip	1	59503	Gasket	1	63726	Clip-coil retaining	1	80513	6 x 1/2	25
55982	Nut-terminal	1	A-59552	Sprocket & Drum	1	63739-2	Cover-tank	1	80541	8-32 x 1/2	2
56607	Gasket	1	A-59555	Sprocket & Drum	1	64049-A	Lock-spring	1	80560	8-32 x 1/2	2
57084-1	Reel-250 feet	1	59622	Clamp-condenser	1	64090	Screw-coil clip	1	80591	4-40 x 1/4	4
57289-1	Button	2	59651-1	Bracket	1	64102-A	Screw-cam	1	80648	10-32 x 1/2	1
A-57650-3	Switch-w/ nut	1	59661-6	Bracket	1	64124	Bearing-needle	1	80676	12-24 x 5/8	5
57749	Screw Group	1	59683-A	Shield-inner	1	64221	Ring	1	80821	12-24 x 1/2	1
57750	Screw Group	1	59688-A	Shield-outer	1	64224	Cover-diaphragm	1	80825	10-32 x 9/16	2
57819	Ring-retaining	1	60649-4A	Cover	1	64227	Choke Shaft Assembly	1	80864	12-24 x 1	1
A-57834-10	Plunger	1	59674	Line-oil	1	64228	Shutter	1	80867	12-24 x 3/4	6
58190-S	Bearing-ball	1	59675	Worm	1	64229	Needle-inlet	1	80891	12-24 x 7/8	5
58308-A	Seal	1	59678-B	Valve-reed	4	64231	Gasket-diaphragm	1	80899	12-24 x 9/16	4
58319-A	Ring-retaining	2	59704	Screw	2	64233	Diaphragm-fuel pump	1	80919	4-40 x 1/4	2
58388	Gasket	1	59705	Washer-lock	2	64235	Diaphragm-metering	1	80921	10-32 x 2-11/16	2
58362	Grommet	1	59710	Gasket	1	64236	Spring-needle adj.	2	80939	8-32 x 3/8	4
58392-1	Gasket	1	59716	Lever	1	64238	Spring-choke friction	1	80963	12-24 x 1/2	1
58405	Spring-lock	1	59717	Needle-inlet	1	64243	Screen-fuel inlet	1	81065-2	Nut-1/4-28	4
58409	Ring-retaining	1	59718	Spacer	1	64244	Pin-metering lever	1	81068	Nut-12-24	2
58688-A	Seal	2	59722	Gasket-carb.	1	64245	Lever-metering	1	81089-2	Nut-3/8-16	2
58706-B1	Cylinder	1	59736	Gasket	1	64400	Bushing-spring lock	1	81108	Nut-1/4-20	1
58724	Bearing	1	59760	Seal-felt	1	64443	Bushing-starter post	1	81109-2	Nut-10-32	4
58750-2	Cover-drivcase	1	59763	Rod-throttle	1	A-64446	Pulley-starter	1	81117	Nut-5/16-24	1
58757-B	Stud-shoulder	2	59765	"O" Ring	2	A-64518	Housing-fan	1	81192	Nut-3/8-24	1
58756	Pawl-starter	2	59770	Grommet	1	64688	Screw-metering	1	83002	Washer-5/16	1
58758	Spring-pawl	2	59771	Gasket-cylinder	1	64689	Screw Assembly	4	83008-1	Washer-#4	6
58763	Washer-retaining	1	A-59790	Handle Bar	1	64693	Screw-valve	2	83009	Washer-1/4	4
58764-A	Spring-recoil	1	59794	Grommet	1	64694	Screw	4	83024	Washer-#6	4
58765	Screen-starter	1	59798-2	Plug	1	64813	Ring-retaining	2	83046	Washer-#10	2
58773-5	Cover-air filter	1	59799	Gasket	1	65143	Cap-check valve	1	83056	Washer-#12	2
A-58799-D	Crankcase	1	A-59804	Filter-oil	1	A-65272	Nut-cover mounting	1	84010	Washer-3/8	1
58806	Rope-starter	1	A-59806	Line-oil	1	A-65283-B	Cap-fuel filler	1	84056	Washer-5/16	1
58809	Rotor-magneto	1	A-59809-A	Pump-auto. oiler	1	65386	Kit-repair	1	86301	Pin-cotter	2
58810	Gasket-cover	1	A-59818	Valve-check	1	65746	Race-inner	1	86324	Pin-cotter	1
58811	Cover-bkr. box	1	A-59819	Line-oil	1	A-65868	Kit-oil pump	1			
A-58828	Filter-oil	1	*A-59822-A	Bracket	1	A-65990	Hub & Drum	1			

Do Not Sell or Reproduce Without Our Written Permission

* Denotes New Parts

Leon's Chainsaw Parts & Repair
Do Not Sell or Reproduce



▲ textron
DIVISION

PORT CHESTER, NEW YORK, U.S.A. 10573