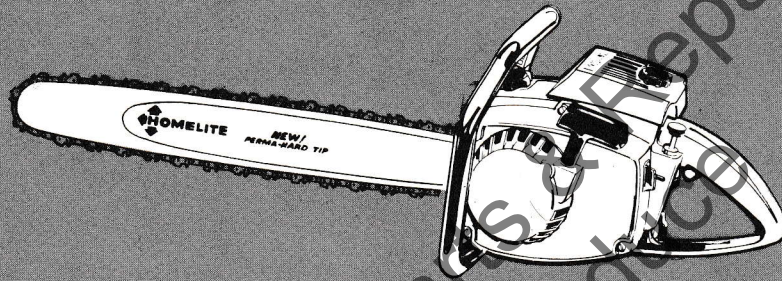


FIRST EDITION · PRICE \$.25

PARTS LIST

SUPER XL AUTOMATIC

PART NUMBER 24228



HOMELITE®

CHAIN SAWS

HOMELITE XL CHAIN SAWS

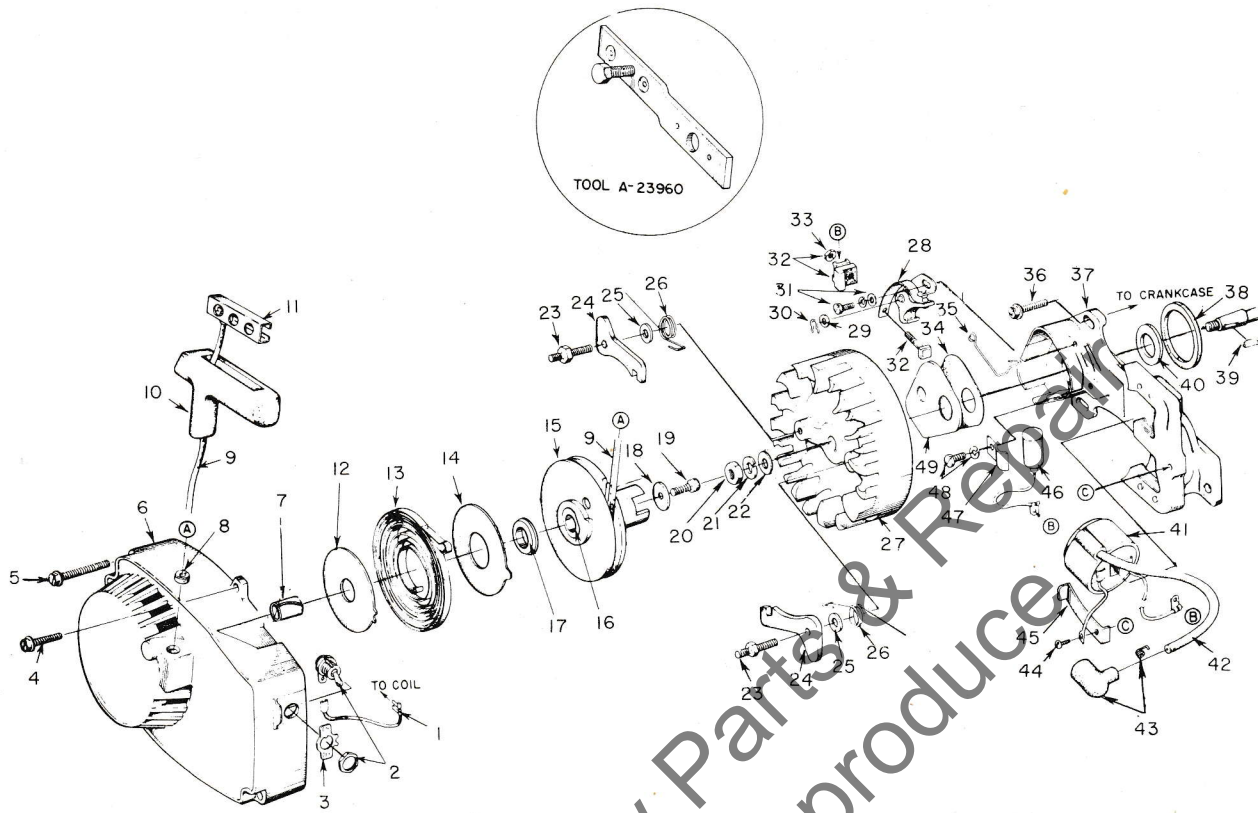


FIGURE 1

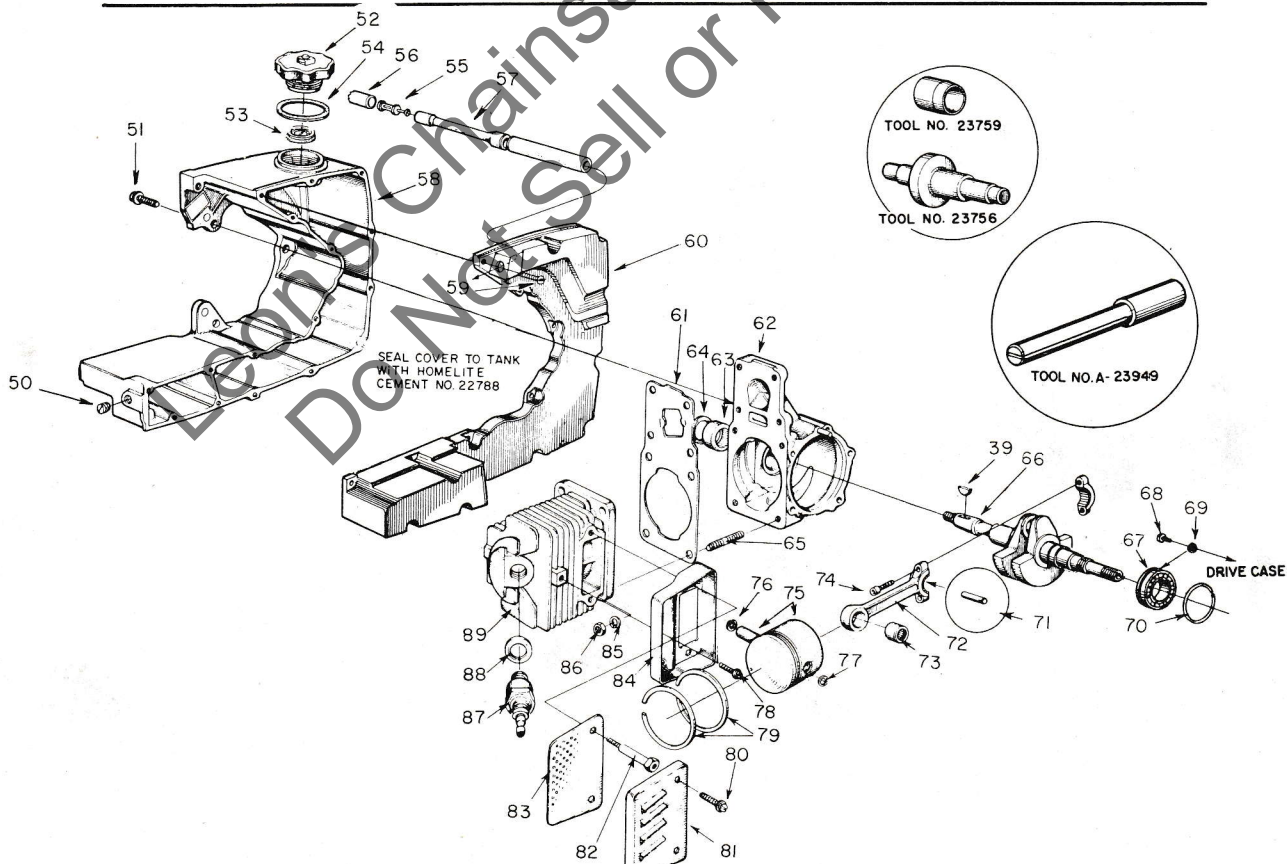


FIGURE 2

HOMELITE XL CHAIN SAWS

Ignition Type - "W" indicates Wico, "P" indicates Phelon.
DO NOT INTERCHANGE PARTS.

No.	Description	Part No.	Qty	No.	Description	Part No.	Qty
1	LEAD - ground w/terminal	A-59031	1	45	CLIP - coil retaining	"W" 63726	1
2	SWITCH - w/nut	A-57650-3	1			"P" 59863	1
3	PLATE - "ON -- OFF"	72085-A	1	46	CONDENSER - w/clamp	"W" 63250	1
4	SCREW - hex, 12-24 x 5/8	80676	1			"P" 59862	1
5	SCREW - hex, 12-24 x 1 11/16	58963	3	47	CLAMP - condenser	"W" 59622	1
6	HOUSING - fan	A-64518	1	48	SCREW GROUP - condenser	"W" 30261	1
7	Includes: BUSHING - starter	64443	1			"P" 57750	1
8	BUSHING - rope	59313	1	49	COVER - breaker box	"W" 58811	1
9	ROPE - starter	58806	1			"P" 59864	1
10	GRIP - rope	58915	1	50	PLUG - pipe, 1/16-27	59571	1
11	INSERT	58847	1	51	SCREW - shoulder	63407	3
12	SHIELD - spring (inner)	59638-A	1	*52	CAP - fuel filler	A-65741	1
13	SPRING - recoil	58764-A	1	53	Includes: VALVE - relief	56865-1	1
14	SHIELD - spring (outer)	59639-A	1	54	GASKET	58957	1
15	PULLEY - starter	A-64446	1	55	FILTER - fuel	A-59251	1
16	Includes: LOCK - spring	64049-A	1	56	Includes: FILTER - felt	59253	1
17	BUSHING - spring	64400	1	57	LINE - fuel	63745	1
18	WASHER - retaining	58763	1	58	TANK - fuel	58732-4	1
19	SCREW - hex, 10-32 x 1/2	80648	1	59	SCREW - rd., #6 x 1/2	80513	16
20	NUT - hex, 5/16-24	81117	1	60	COVER - tank	63739-2	1
21	WASHER - lock, 5/16	83002	1	61	GASKET - cylinder	59771	1
22	WASHER - flat, 5/16	84056	1	62	CRANKCASE	A-58799-D	1
23	STUD - pawl	58757-B	2	63	Includes: BEARING	58956	1
24	PAWL - starter	58756	2	64	SEAL	58688-A	1
25	WASHER	58851	2	65	STUD	55871	4
26	SPRING - starter pawl	58758	2	66	CRANKSHAFT	63498	1
27	ROTOR - magneto	"W" 58809	1	67	BEARING - ball	58190-S	1
		"P" 59857	1	68	SCREW - bearing retainer	59704	2
28	POINT SET - w/felt and terminal block	"P" A-59861	1	69	WASHER - lock	59705	2
31	SCREW GROUP - points	"W" 76421	1	70	RING - retaining	58319-A	1
		"P" 57749	1	71	ROLLER - set (31)	A-63496	1
32	TERMINAL BLOCK GROUP	"W" A-58934	1	72	ROD - connecting	A-63477	1
33	NUT (only) - terminal	"P" 55982	1	73	Includes: BEARING	58724	1
34	GASKET - cover	"W" 58810	1	74	SCREW - socket, 8-32 x 1/2	80889	2
		"P" 59865	1	75	PISTON & PIN	A-59468-B	1
35	CLIP - cover	"W" 76413	1	76	Includes: RING - retaining	75120	1
		"P" 59866	1	77	RING - retaining	64813	1
36	SCREW - hex, 12-24 x 5/8	80676	3	78	SCREW - pan, 12-24 x 1/2	80963	1
37	BOX - breaker	"W" 58875-A	1	79	PISTON - ring	59436	2
		"P" 59859	1	80	SCREW - hex, 10-32 x 9/16	80825	2
38	GASKET	59538	1	81	CAP - muffler	A-63246	1
39	KEY - rotor	75078	1	82	STUD	59891-A	2
40	SEAL - felt	59760	1	83	BAFFLE - muffler	59050	1
41	COIL	"W" 58874	1	84	BODY - muffler	A-59895-A	1
		"P" 59860	1	85	WASHER - lock, 1/4	83009	4
42	LEAD - hi-tension	58966	1	86	NUT - 1/4-28	81065-2	4
43	TERMINAL	A-33055	1	87	SPARK PLUG	63547-S	1
44	SCREW - coil clip	"W" 58872	1	88	Includes: GASKET	25038	1
		"P" 55977	1	89	CYLINDER	58706-B1	1

* Denotes new part

ACCESSORIES -- available from your HOMELITE Dealer

EXCHANGER - heat (not shown) A-63321
 SUPPRESSOR - noise (not shown) A-63080
 ARRESTOR - spark (not shown) A-63500

Use #63503 SHIM (.030) under Muffler Studs with Spark Arrestor.

When Spark Arrestor & Noise Suppressor are used together use #63503-1 SHIM (.060) under Muffler Studs.

HOMELITE XL CHAIN SAWS

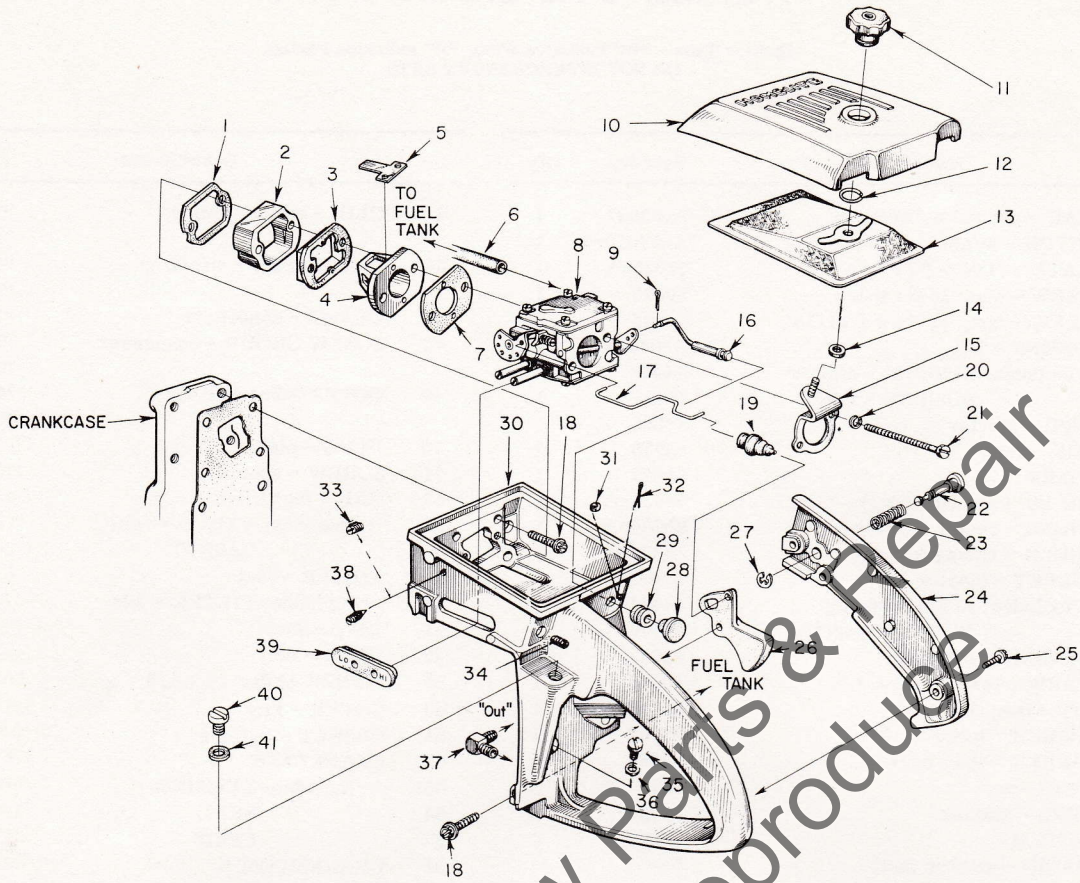


FIGURE 3

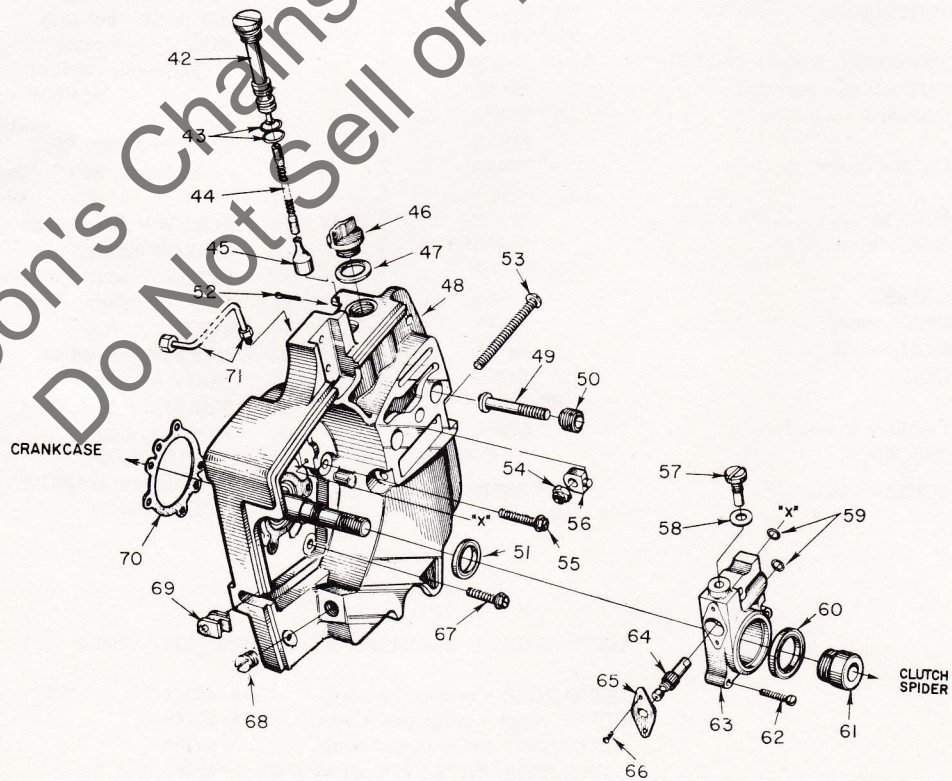


FIGURE 4

ALWAYS FURNISH MODEL AND SERIAL NUMBER WHEN ORDERING PARTS.

HOMELITE XL CHAIN SAWS

No.	Description	Part No.	Qty.	No.	Description	Part No.	Qty.
1	GASKET - spacer	59274	1	36	GASKET - check valve cap	58338	1
2	SPACER	59718	1	37	VALVE - check	A-59011	1
3	RETAINER - reed valve	63260	1	38	SCREW - idle ①	63302	1
4	SEAT - reed valve	63253	1	39	GROMMET	59770	1
5	VALVE - reed	59678-A	4	40	PLUG	59798-2	1
6	LINE - fuel	63745	1	41	GASKET	59799	1
7	GASKET - carburetor	59722	1	42	TUBE - oil line	59325	1
8	CARBURETOR ①	A-58767-C	1	43	"O" RING	59765	2
9	COTTER PIN	86324	1	44	LINE - oil	59674	1
10	COVER - air filter	58773-5	1	45	FILTER - oil	A-58828	1
11	NUT - cover	A-58882	1	46	CAP - filler	A-64310	1
12	RING - retaining	58319-A	1	47	Includes: GASKET	56607	1
13	FILTER ELEMENT	63589	1		(not shown) VALVE - check	63718	1
14	GASKET - mounting stud	58392-1	1	48	DRIVECASE	A-59930-C	1
15	BRACKET - mounting	A-59822	1	49	Includes: STUD - guide bar	59764-A	2
16	ROD - choke	A-59826	1	50	INSERT - threaded	59896-A	2
17	ROD - throttle	59763	1	51	SEAL	58308-A	1
18	SCREW - hex, 12-24 x 7/8	80891	5	52	COTTER PIN	86301	1
19	BOOT - throttle rod	58348	1	53	SCREW - guide bar adjusting	63225	1
20	WASHER - lock, #10	83046	2	54	NUT - lock, 1/4-20	81108	1
21	SCREW - hex, 10-32 x 2 11/16	80921	2	55	SCREW - hex, 12-24 x 1	80864	1
22	PIN - throttle lock	58924	1	56	PIN - bar adjusting	58783-1	1
23	SPRING - lock	58405	1	57	SCREW - cam	59737	1
24	COVER - handle	A-59213	1	58	GASKET	59736	1
	Includes: BUSHING - pin	59064	1	59	"O" RING	90872	2
25	SCREW - pan, 8-32 x 1/2	80560	2	60	SEAL - felt	59926	1
26	TRIGGER - throttle	58859	1	61	WORM	59675	1
27	RING - retaining	58409	1	62	SCREW - pan, 8-32 x 3/4	80248	3
28	BUTTON	57289-1	1	63	HOUSING - oil pump	A-59810-B	1
29	GROMMET	58362	1	64	PLUNGER & GEAR	59689	1
30	HOUSING & HANDLE	A-59931-A	1	65	BEARING - flanged	59719	1
31	Includes: FELT	63290	1	66	SCREW - pan, 4-40 x 1/2	80919	2
32	COTTER PIN	86301	1	67	SCREW - hex, 12-24 x 9/16	80899	4
33	PLUG	63303	1	68	PLUG	28097	1
34	PLUG	63310	1	69	GROMMET	59794	1
35	CAP - check valve	58339	1	70	GASKET	63355	1
				71	LINE - oil discharge	A-59806	1

HOMELITE XL CHAIN SAWS

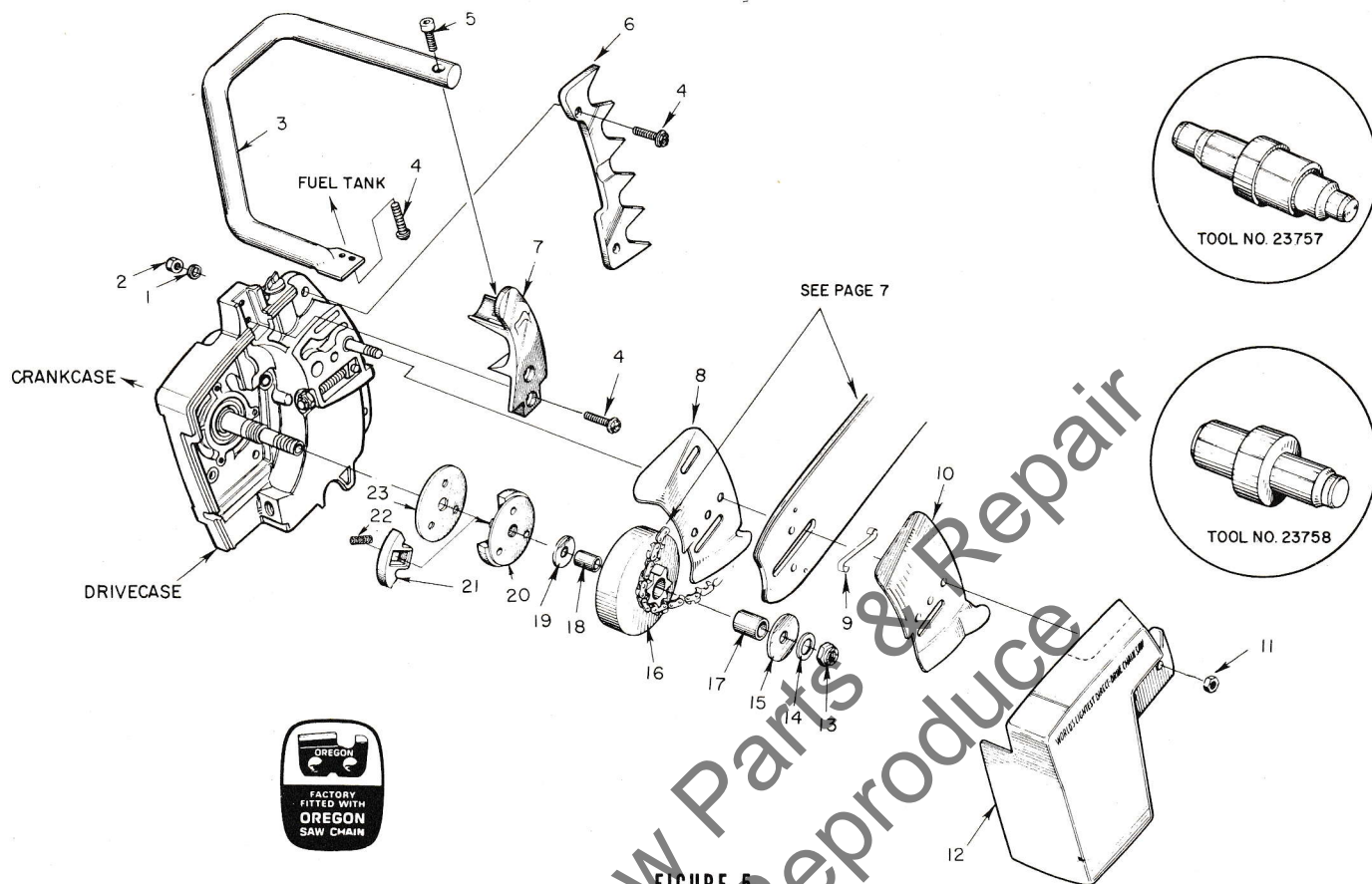


FIGURE 5

No.	Description	Part No.	Qty.	No.	Description	Part No.	Qty.
1	WASHER - lock, #12 (optional)	83056	2	16	SPROCKET & DRUM ③		
2	NUT - hex, 12-24 (optional)	81068	2		standard - 3/8" pitch, 7 tooth	A-59552	1
3	HANDLE BAR - flush cut ②	A-59790	1		optional - 3/8" pitch, 8 tooth	A-63346	1
	wrap around (optional)	A-63421	1		.404" pitch, 7 tooth	A-59555	1
4	SCREW - hex, 12-24 x 3/4	80867	6	17	Includes: BEARING - needle	72311	1
5	SCREW - socket	80428	1		"Splined" type (not shown - optional)		
6	BUMPER - spiked (optional)	58961	1		DRUM & HUB - sprocket	A-63288	1
7	BRACKET - handle bar ②	59651-2	1		Includes: BEARING - needle	72311	1
	wrap around bar (optional)	59651-6	1		SPROCKET - "Splined"		
8	PLATE - guide bar (inner)	58781	1		optional (rim type) - 3/8" pitch, 7 tooth	63284	1
9	SPRING - guide bar	64448	1		.404" pitch, 7 tooth	63285	1
10	PLATE - guide bar (outer)	58782	1	18	RACE - inner	55584	1
11	NUT - hex, 5/16-18	81196	2	19	WASHER - thrust (inner)	58833	1
12	COVER - drivecase	58750-2	1	20	PLATE - clutch	63053-1	1
13	NUT - lock, 3/8-24	81192	1	21	SHOE - clutch	63052	3
14	WASHER - flat, 3/8	84010-1	1	22	SPRING - clutch	63034	3
15	WASHER - thrust (outer)	58926	1	23	COVER - clutch	63051	1

HOMELITE XL CHAIN SAWS

SPECIAL TOOLS (available on order)

No.	Description
A-23937-B	WRENCH - combination
22828	PLIERS - piston snap ring
23528	WRENCH - socket screw (conn. rod)
23756	PLUG - bearing assembly and disassembly - conn. rod
23757	PLUG - bearing assembly and disassembly - drive and crankcases.
23819	PLUG - needle bearing (sprocket)
23758	SEAL ASSEMBLY - drive and crankcases
23759	SLEEVE - crankshaft assembly
A-23960	REMOVER AND LOCKING BRACKET - rotor
23800	TOOL - seal assembly (crank and drivecases)
23884-A	SLEEVE - bearing and shaft
23844	SLEEVE - crankcase assembly
23843	SLEEVE - drivecase assembly
23845	PLUG - drivecase assembly
23846	ANVIL - crankshaft installation
23136	BODY - jackscrew
A-23137	JACKSCREW
22820-1	COLLAR - bearing
A-23841-A	WRENCH - insert (guide bar stud)
A-23949	PLUG - piston pin removal
A-23934	CLUTCH SPANNER WRENCH
<u>PAINT</u>	
23318	SPRAY CAN - blue
23560	SPRAY CAN - white

NOTES

- ① Service replacement Carburetor #A-58767-C supplied with idle stop screw and spring (internal adjustments only); when either external adjustment screw #63302 or #59916 is used (see PLUGS below), discard internal adjustment screw and spring. Refer to Carburetor Parts List #23766-C; use Repair Parts Kit #58972, Gasket Set #58971.
PLUGS - Use #63303 screw plug in tapped hole for index #38.
- ② A-63421 requires new Bracket (#59651-6) to replace index #7, and another Bracket (#63405) which mounts on drivecase cover. Screw #80676 attaches drivecase cover bracket to handle bar.
- ③ Check type and number to teeth before ordering. "Splined" HUB & DRUM requires one of "Splined" sprockets listed.

HOMELITE®

SUPER

XL

AUTOMATIC

CHAIN SAWS

*Leon's Chainsaw Parts & Repair
Do Not Sell or Reproduce*

HOMELITE

A **textron** DIVISION

PORT CHESTER, NEW YORK

PRINTED IN U.S.A.