

Homelite®

PARTS LIST

SXL-AO **CHAIN SAWS**

UT10045-E

UT10650-B .. (Int'l)

UT10712 .. (Old Blue)

UT10739 .. (Big Red)

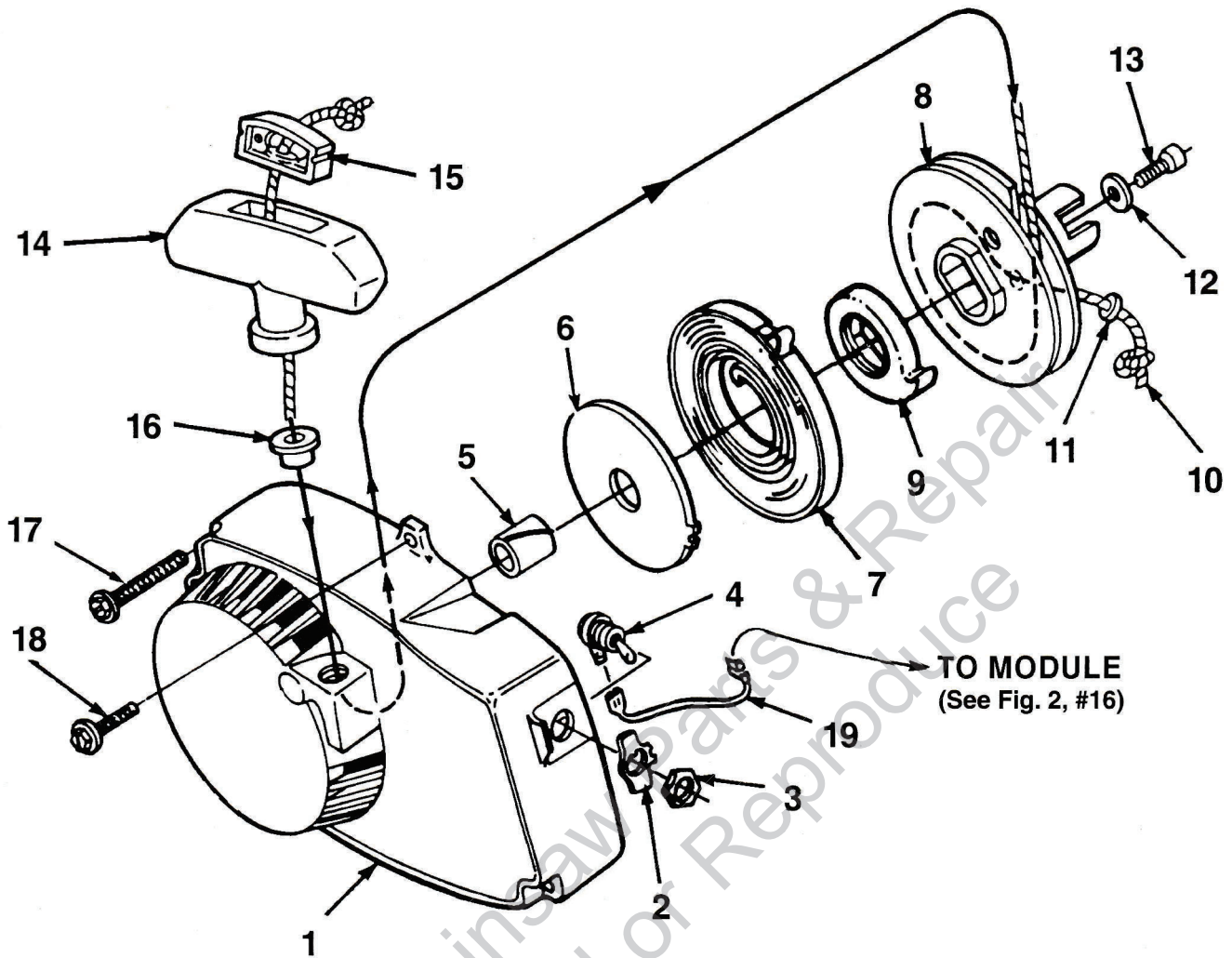
IF YOUR UNIT IS NOT LISTED ABOVE, SEE CHART ON PAGE 2 TO FIND PARTS LIST NUMBER FOR YOUR UNIT.

PART NO. 19834

Printed in U.S.A.

STARTER

Figure 1

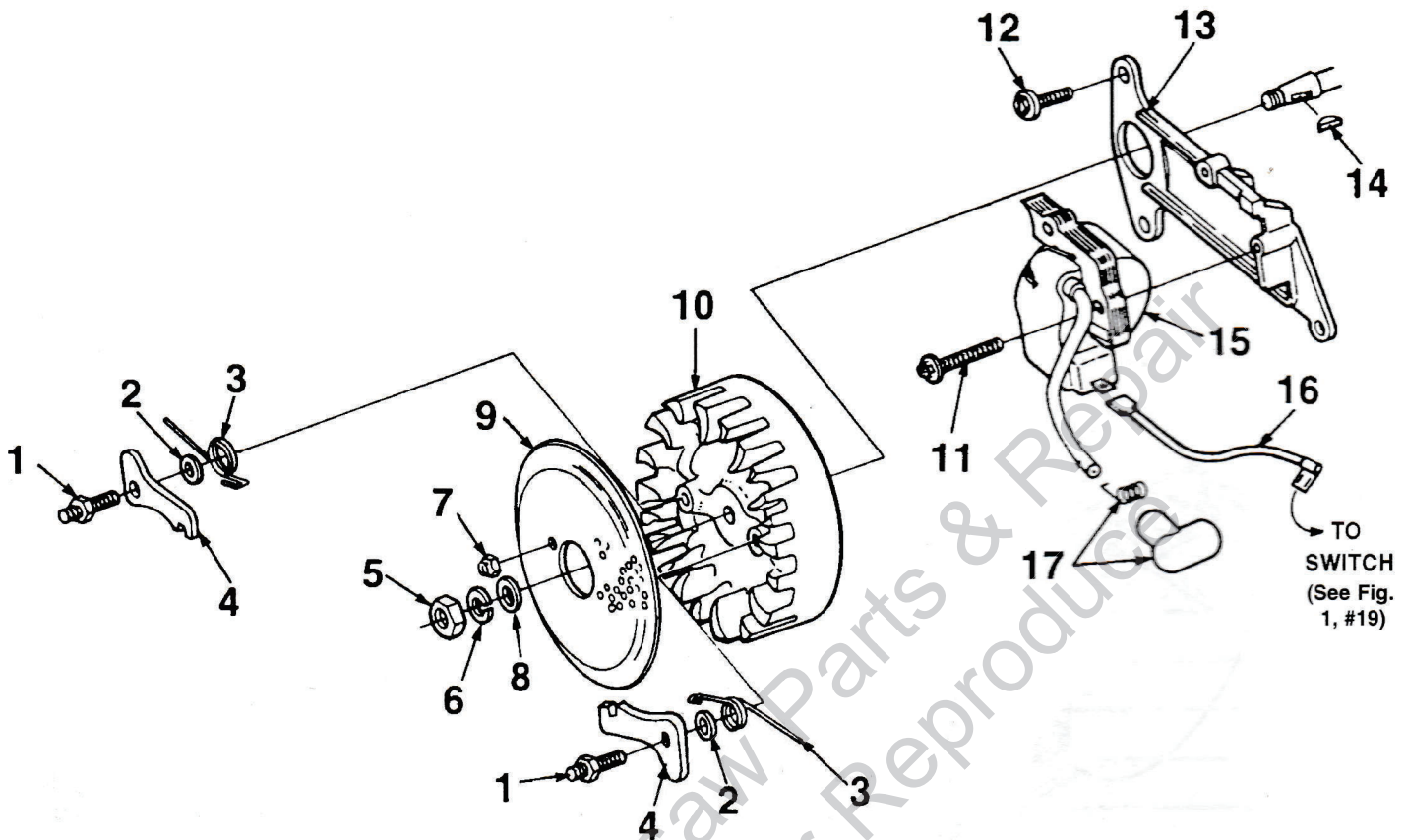


NO.	PART NO.	DESCRIPTION	Qty.
1a	• A 02022	STARTER-Complete (UT10712)	1
1b	• A 07027	STARTER-Complete	1
2	95231	PLATE- On & Off	1
3	72084 A1	NUT- Hex Locking	1
4	96831	SWITCH & LEAD	1
5	64443	BUSHING-Starter	1
6	59638 B	SHIELD-Spring (Inner)	1
7	A 94842	SPRING- Recoil	1
8	• A 64446	PULLEY-Starter	1
9	94827	BUSHING-Spring	1
10	• A 93875	ROPE-Starter (48")	1
11	93862	WASHER-Flat Nylon	1
12	58763	WASHER-Retainer	1
13	80648	SCREW-Hex (10-32 X 1/2")	1
14	• A 69962 B	GRIP-Starter Rope	1
15	70018 A	INSERT	1
16	67177	BUSHING-Rope	1
17	58963	SCREW-Hex (12-24 X 11/16)	3
18	80899	SCREW-Hex (12-24 X 9/16)	1
19	A 94850	LEAD-Ground (Solid State)	1

• ASSEMBLIES

Figure 2

IGNITION

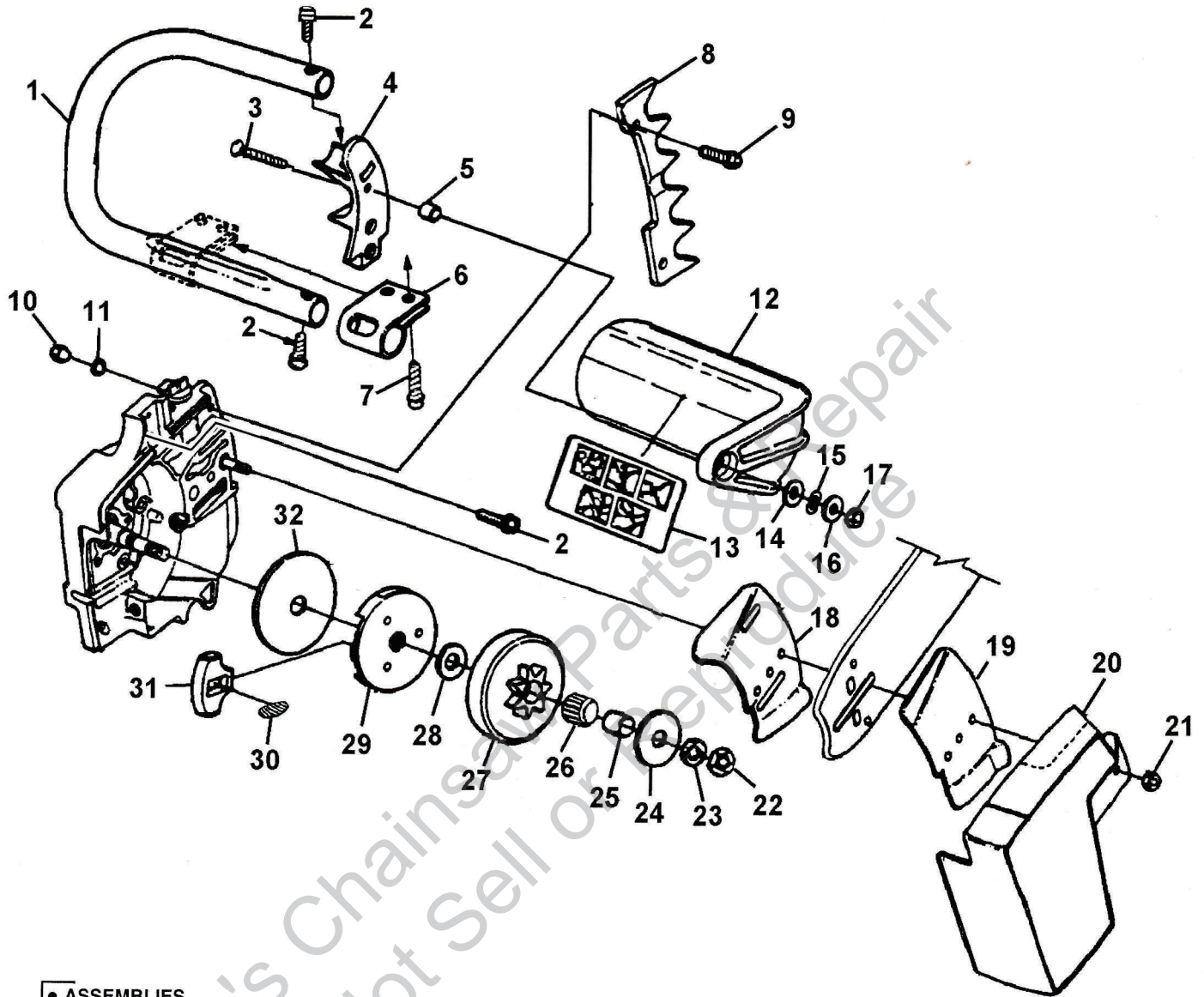


NO.	PART NO.	DESCRIPTION	Qty.
1	58757 E	STUD-Shoulder	2
2	70901	WASHER-Lock	2
3	01101	SPRING-Starter Pawl	2
4	58756 A	PAWL-Starter	2
5	81117	NUT-Hex (5J/16-24)	1
6	83002	WASHER-Lock (5/16)	1
7	81206	NUT-Center Lock (#10-32)	2
8	84056	WASHER-Flat (5/16)	1
9	58765	SCREEN-Starter	1
10	94588	ROTOR-Magneto	1
11	82248	SCREW-Hex Washer Hd. (8-32 X 3/4)	2
12	80899	SCREW-Hex Hd. (12-24 X 9/16)	3
13	94326 1	PLATE-Ignition Coil Mtg. (Solid State)	1
14	75078	KEY-Woodruff	1
15	94589 AS	MODULE & CORE	1
16	A 94850	LEAD-Ground (Solid State)	1
17	A 33055	TERMINAL-High Tension	1

• ASSEMBLIES

HANDLE and CLUTCH

Figure 3



• ASSEMBLIES

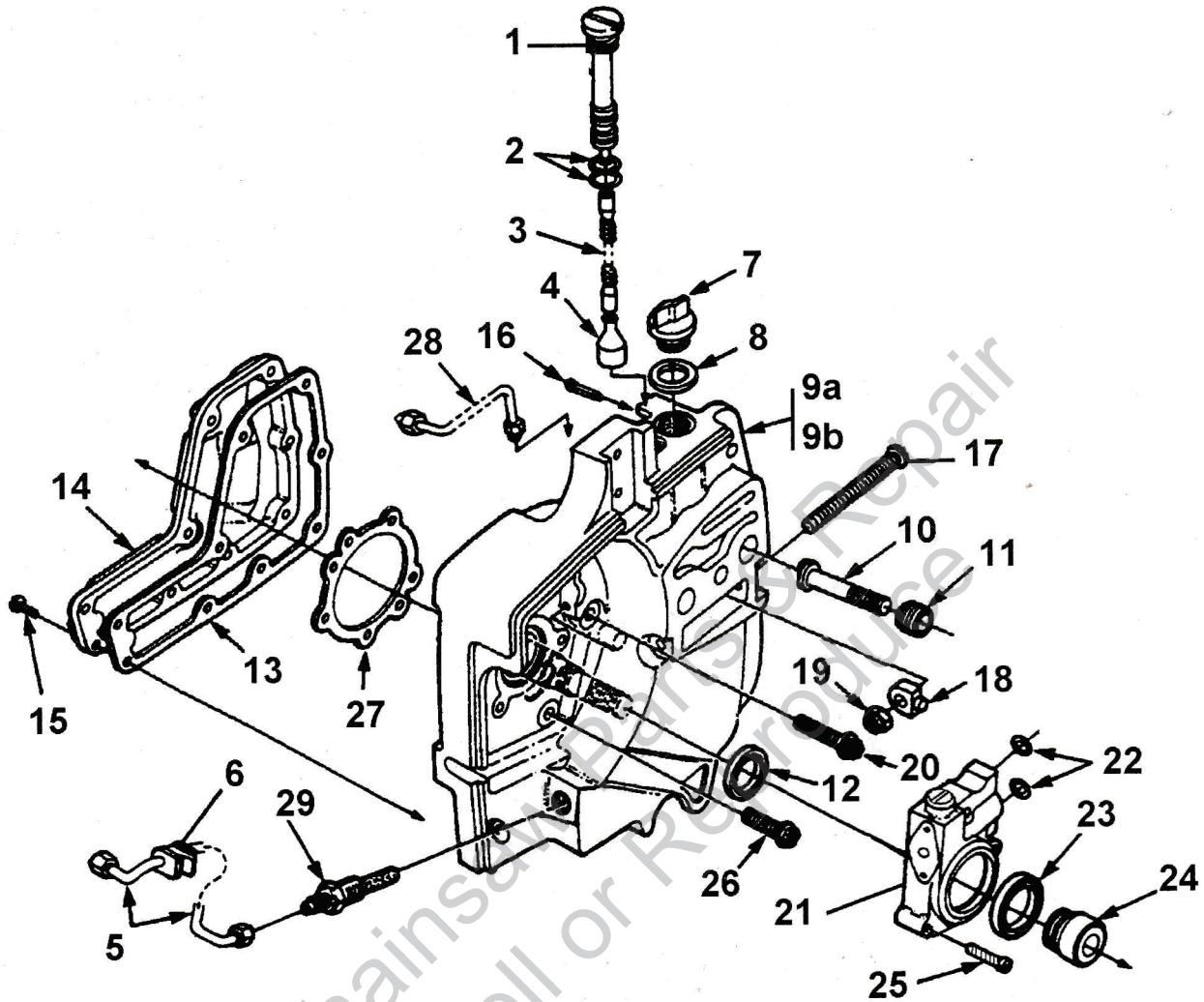
NO.	PART NO.	DESCRIPTION	Qty.
1	A 98080	HANDLE BAR-Flush Cut	1
2	80428 1	SCREW-Soc Hd. (1/4-20 X 1")	1
3	82223	SCREW-Flat Hd. (12-24 X 1 1/4")	4
4a	59651 19	BRACKET-Handle Bar	1
4b	59651 18	BRACKET-Handle Bar (UT 10712)	1
5	95937	SPACER	1
6	63291 A	CLAMP-Handle Bar	1
7	80867	SCREW-Mach. Hex Hd. (12-24 X 3/4")	4
8	•A 59043	BUMPER SPIKE KIT (Accessory)	1
9	80867	SCREW-Hex (12-24 X 3/4")	2
10	81068	NUT-Hex (12-24)	2
11	70901	WASHER-Lock (#12)	2
12	•A 95088 A	HAND GUARD	1
13	02661	DECAL-Hand Guard	1
14	84065	WASHER-Flat	1
15	96757	WASHER-Spring Wave	1
16	95935	WASHER-(5/16)	1
17	81225	NUT (12-24)	1

NO.	PART NO.	DESCRIPTION	Qty.
18	•A 70618	GUIDE BAR PLATE KIT	1
	70399	PLATE-Guide Bar (Inner)	1
19	70400	PLATE-Guide Bar (Outer)	1
20a	58750 26	COVER-Drive Case	1
20b	58750 25	COVER-Drive Case (UT10712)	1
21	81089 2	NUT-Hex (3/8-16)	1
22	81124 A	NUT-Lock (3/8-24)	1
23	83018	WASHER-Lock (3/8")	1
24	65064	WASHER-Thrust (Outer)	1
25	65746 B	RACE-Inner	1
26	64124	BEARING-Roller	1
27	A 95459	SPROCKET & DRUM (7 Tooth Std)	1
28	58833	WASHER-Thrust (Inner)	1
	•A 69480 C	CLUTCH ASSEMBLY	1
29	65760 1B	PLATE-Clutch	1
30	67053	SPRING-Clutch	3
31	69461	SHOE-Clutch	3
32	95054	COVER-Clutch	1

ALWAYS FURNISH MODEL AND SERIAL NUMBERS WHEN ORDERING PARTS.

Figure 4

OIL PUMP and DRIVECASE



• ASSEMBLIES

NO.	PART NO.	DESCRIPTION	Qty.
	•A 69371	OIL FILTER ASSEMBLY	1
1	59325 2	TUBE-Oil Line	1
2	59765	"O" RING	1
3	70309 09	TUBING-Rubber (2 1/4")	1
4	A 68593	FILTER-Oil	1
5	•A 59819	LINE-Oil	1
6	59794	GROMMET	1
7	•A 63717 C	CAP-Filler Oil	1
8	56607	GASKET	1
9a	A 02033	DRIVECASE ASSEMBLY(UT10712)(NOTE 1)	1
9b	•A 59930 J	DRIVECASE ASSEMBLY	1
10	67475	STUD-Guide Bar (3/8)	2
11	67476	INSERT-Threaded	2
12	58308 B	SEAL	1
13	59710	GASKET-Oil Reservoir	1
14	96453 3	COVER-Oil Reservoir	1
15	82564	SCREW-Thread Form. (6 X 1/2")	9
	80742	SCREW-Set (Not Shown)	1
16	86301	PIN-Cotter	1

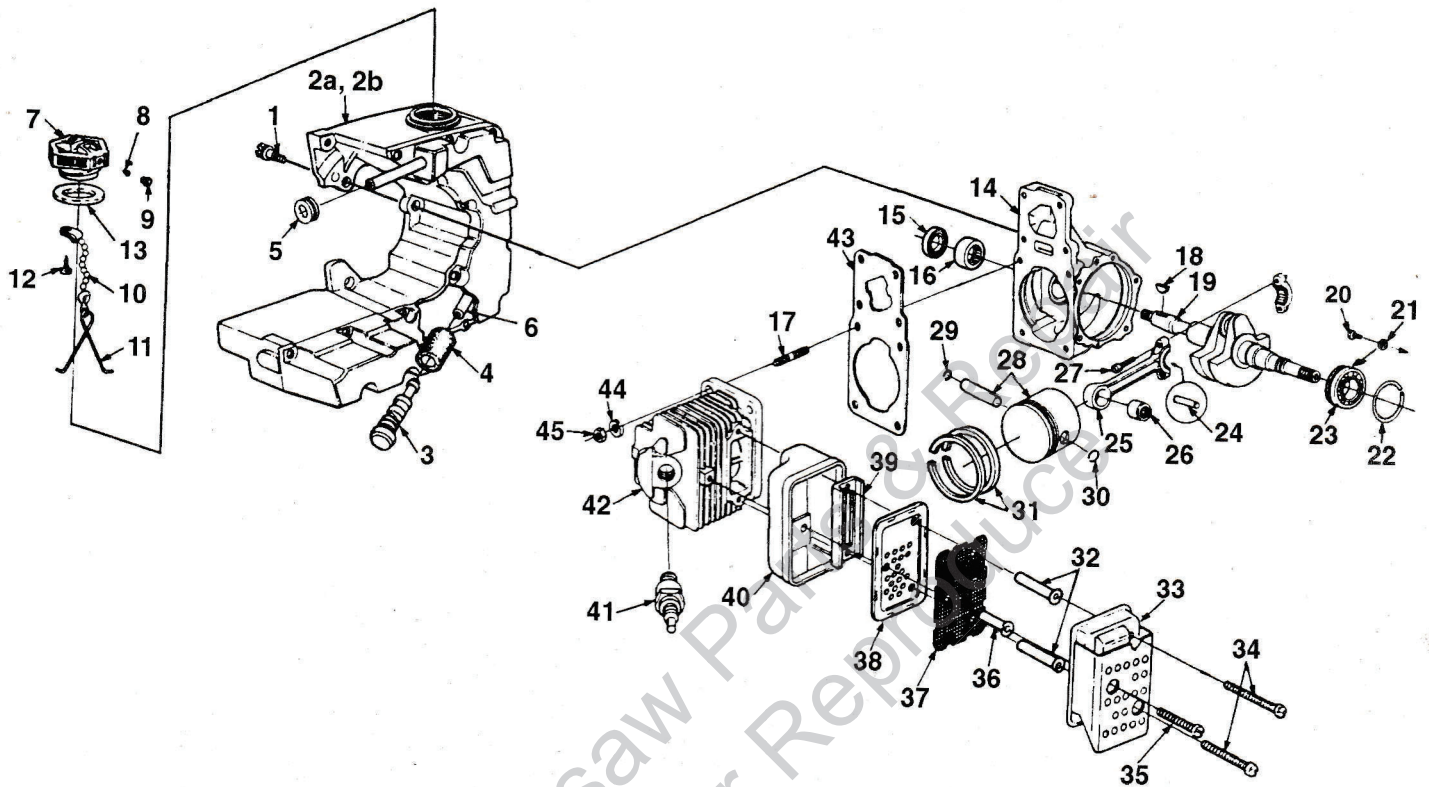
NO.	PART NO.	DESCRIPTION	Qty.
17	63225	SCREW-Guide Bar Adjusting	1
18	93039	PIN-Bar Adjusting	1
19	81204	NUT-Lock (1/4-20)	1
20	80864	SCREW-Hex (12-24 X 1")	1
21	•A 00007 A	PUMP-Automatic Oil	1
22	59074	"O" RING	2
23	59926	SEAL-Felt	1
24	00001	WORM GEAR, OIL, PUMP	1
25	82248	SCREW-Fil (8-32 X 3/4")	3
26	80899	SCREW-Hex (12-24 X 9/16)	4
27	63355	GASKET-Crankcase	1
28	A 59806	LINE-Oil (Discharge)	1
29	A 59804 A	FILTER-Oil (Manual Oil)	1

NOTE 1: Drivecase Only. No Additional Parts Included.

ALWAYS FURNISH MODEL AND SERIAL NUMBERS WHEN ORDERING PARTS.

ENGINE and FUEL TANK

Figure 5



• ASSEMBLIES

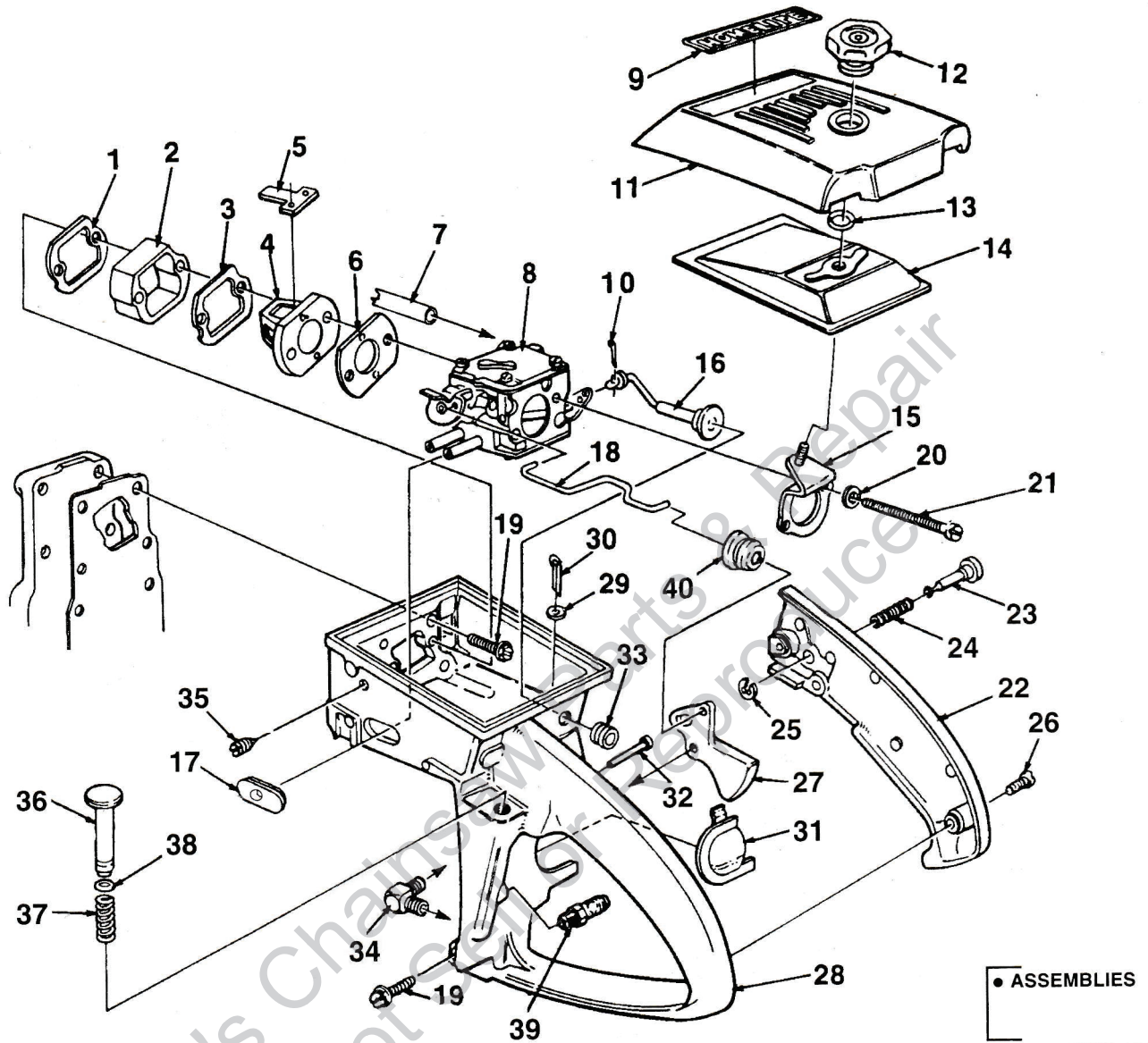
NO.	PART NO.	DESCRIPTION	Qty.	NO.	PART NO.	DESCRIPTION	Qty.
1	63407	SCREW-Shoulder	3	24	A 69054	ROLLER SET (31)	1
2a	A 63902 7	FUEL TANK (UT10712) (NOTE 2)	1	25	•A 63477 A	ROD-Connecting	1
2b	•A 68345 B	FUEL TANK	1	26	93369	BEARING	1
3	•A 69923	FILTER-Fuel	1	27	69919	SCREW-Cap Soc. Hd.	2
4	64083	FELT FILTER	1	28	•A 68438	PISTON & PIN	1
5	68049	GROMMET	1	29	75120	RING-Retaining	1
6	70310 37	TUBING-Rubber (9 1/4")	1	30	64813	RING-Retaining	1
7	•A 69499 1	CAP-Fuel Filler	1	31	59436 1A	PISTON RING	2
8	69451	VALVE-Check	1	B	•A 94219 A	MUFFLER ASSEMBLY	1
9	69454	FILTER-Fuel Cap	1	32	93983 01	SPACER-Muffler	2
10	69502	CHAIN-Bead	1	33	A 95988	CAP-Muffler & Shield	1
11	96535	RETAINER	1	34	94128	SCREW-Hex Hd. (12-24 X 2 1/4")	2
12	82256 A	SCREW-Pan Hd. (#6 X 1/4")	1	35	94129	SCREW-Hex Hd. (12-24 X 1 7/8")	1
13	69501	GASKET-Fuel Filler Cap	1	36	93983 02	SPACER-Muffler	1
14	•A 65736	CRANKCASE	1	37	93979	SCREEN-Spark Arrestor	1
15	12282 A	SEAL	1	38	93980	BAFFLE-Muffler	1
16	58956	BEARING	1	39	94133 A	PLATE-Muffler	1
17	96127 A	STUD-Cylinder	4	40	93981	BODY-Muffler	1
18	75078	KEY-Woodruff	1	41	63547 S	SPARK PLUG (CJ8)	1
19	93595	CRANKSHAFT	1	42	•A 69714	CYLINDER	1
20	70306	SCREW-Torx	2	43	59771	GASKET - Cylinder	1
21	59705	WASHER-Lock	2	44	83061	WASHER-Lock (1/4")	4
22	58319 A	RING-Retaining	2	45	96212	NUT (1/4 - 28)	4
23	58190	BEARING-Ball	2				

NOTE 2 : Fuel Tank Only (Old Blue). No Additional Parts Included.

ALWAYS FURNISH MODEL AND SERIAL NUMBERS WHEN ORDERING PARTS.

Figure 6

THROTTLE HANDLE and CARBURETOR



NO.	PART NO.	DESCRIPTION	Qty.	NO.	PART NO.	DESCRIPTION	Qty.
1	59274	GASKET-Spacer	1	22b	• A 06727	COVER-Throttle Handle	1
2	59718	SPACER-Heat Dam	1		67752	BUSHING-Pin (Not Shown)	1
3	63260 A	RETAINER-Reed Valve	1	23	95671	PIN-Throttle Latch	1
4	63253	SEAT-Reed Valve	1	24	58405	SPRING-Throttle Latch	1
5	59678 B	VALVE-Reed	4	25	58409	RING-Retaining	1
6	59722	GASKET-Carburetor	1	26	80560	SCREW-Pan (8-32 X 1/2")	2
7	70310 37	LINE-Fuel (9 1/4")	1	27	58859 A	TRIGGER-Throttle	1
8	A 68371 C	CARBURETOR-Walbro	1	28a	59244 12	THROTTLE HANDLE (UT10712) (NOTE 3)	1
	A 07048	CARBURETOR-Zama	1	28b	• A 06729	THROTTLE HANDLE	1
9	06738	LABEL-Homelite®	1	29	63290	WASHER-Felt	1
10	86324	PIN-Cotter	1	30	86301	PIN-Cotter	1
11	58773 3A	COVER-Air Filter	1	31	93209	SHIELD-Spark Plug	1
12	A 65272	NUT-Air Filter Cover	1	32	94142	PIN, Oil Plunger Retaining	1
13	58319 A	RING-Retaining	1	33	A 59011	VALVE-Check	1
14	63589 A	ELEMENT-Air Filter	1	34	63302 B	SCREW-Idle	1
15	A 59822 B	BRACKET-Mounting	1	35	58362	GROMMET KIT	1
16	68130 1	ROD-Choke	1	36	• A 93783	PLUNGER-Spring	1
17	A 07047	GROMMET KIT	1	37	59293	SPRING-Compression	1
18	59763	ROD-Throttle	1	38	74388	"O" RING	1
19	80891	SCREW-Hex (12-24 X 7/8")	5	39	A 59818	VALVE-Check	1
20	83046	WASHER-Lock (#10)	2	40	67634	BOOT- Throttle Rod	1
21	80921	SCREW-Hex (10-32 X 2 11/16")	2				
22a	58779 12	COVER-Throttle Handle (UT10712) (NOTE 3)	1				

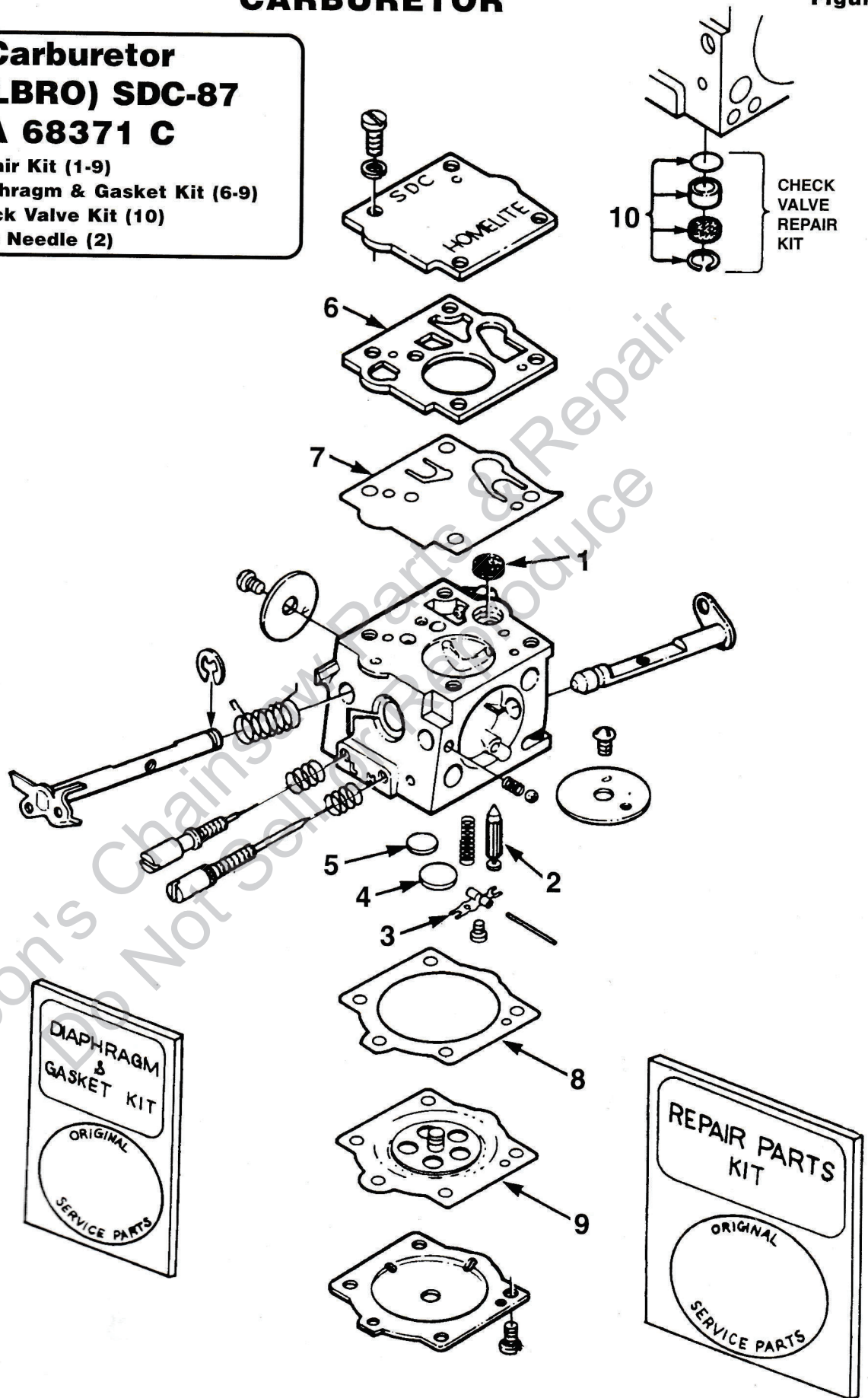
NOTE 3 - Painted Casting Only. No Additional Parts Included.

CARBURETOR

Figure 7

Carburetor (WALBRO) SDC-87 A 68371 C

- 67020 Repair Kit (1-9)
- 98630 Diaphragm & Gasket Kit (6-9)
- 90310 B Check Valve Kit (10)
- 97942 Inlet Needle (2)



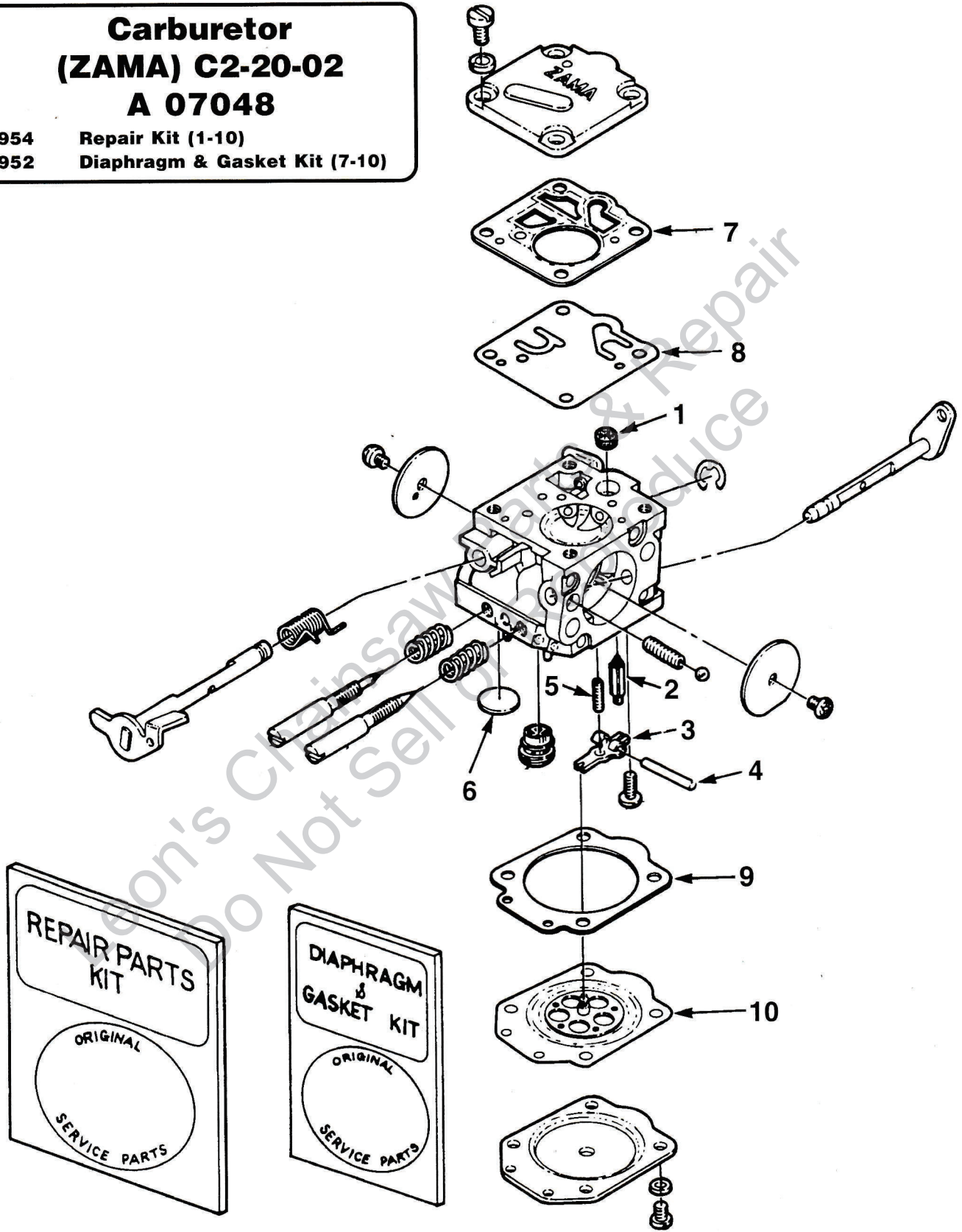
ALWAYS FURNISH MODEL AND SERIAL NUMBERS WHEN ORDERING PARTS.

Figure 8

CARBURETOR

**Carburetor
(ZAMA) C2-20-02
A 07048**

94954 Repair Kit (1-10)
94952 Diaphragm & Gasket Kit (7-10)



ALWAYS FURNISH MODEL AND SERIAL NUMBERS WHEN ORDERING PARTS.

TOOLS & ACCESSORIES

TOOLS FOR THE SXL-AO

ANVIL - Crankshaft	23846 4
PLUG - Seal assembly - Drive & Crankcase	23758
PLUG - Seal installation - Drivecase assembly	23845
PULLER - Magneto Rotor	A 24290
SLEEVE - Seal protecting	23844
SLEEVE - Seal protecting - Crankcase	23759
SLEEVE - Seal installation - Drive & Crankcase	23800
WRENCH - Spanner to assemble & disassemble Clutch PIN	A 23934 23954
WRENCH - Combination	A 24824
WRENCH - Insert	A 24322
TOOL - Clutch removal (for Clutch Conversion Kit)	A 17146
BIT - Driver torx 1/4" shank.....	24982 01
BIT - Driver torx 5/16" shank.....	24982 02

ACCESSORIES

QTY.

CLUTCH CONVERSION KIT	A 96745	.. 1
Includes:		
SHOE - Clutch	A 93632 B	.. 3
SPIDER - Clutch	93639	.. 3
SPRING - Clutch	93814 A	.. 3
SPROCKET & DRUM	A 95465	.. 1
THRUST WASHER	93643	.. 1
THRUST WASHER	93650	.. 1
THRUST WASHER	65064	.. 1
MANUAL OIL PUMP KIT	A 65868	.. 1
(Prior to S/N 50440501)		
Includes:		
BUTTON	57289 1	.. 1
OIL LINE	A 59819	.. 1
Includes:		
GROMMET	59794	.. 1
VALVE - Check	A 59818	.. 1
FILTER - Oil Intake	A 59804 A	.. 1
PLUNGER	A 57834 10	.. 1
Includes:		
"O" RING	74388	.. 1
"O" RING	59074	.. 1
SPRING	59293	.. 1
SAFE-T-TIP® KIT (Standard)	A 70790 B	.. 1
Includes:		
SCREW	82335	.. 1
CARRY CASE	A 01502 A	.. 1
REEL - Starting Rope (250 Ft.) (#5)	57084 1	.. 1
INSERT KIT (for Drivecase & Barstuds)	A 70370 A	.. 1
TUBING - Rubber (10 Ft.) (Fuel & Oil) ...	70310 99	.. 1
TUBING - Rubber (100 Ft.) (Fuel & Oil) .	70309 98	.. 1

Leon's Chainsaw Parts & Repair
Do Not Sell on Amazon

CUSTOMER ASSISTANCE

**FOR THE LOCATION OF YOUR NEAREST HOMELITE SERVICING DEALER
IN THE UNITED STATES, PUERTO RICO, AND THE VIRGIN ISLANDS,**

CALL: 1-800-242-4672

HEADQUARTERS

Homelite, Inc.
P.O. BOX 7047
CHARLOTTE, N.C. 28241

OVERSEAS OFFICES

NETHERLANDS

Homelite Netherlands B.V.
A Deere & Company Affiliate
Haverstraat 24
2153 GB Nieuw Vennep
The Netherlands

FRANCE

Homelite Atlantic SARL
Groupe Deere & Co.
BP 7011
95050 Cergy Pontoise Cedex
France

AUSTRALIA

Homelite Pacific Ltd.
A Deere & Company Affiliate
ACN 008 683 538
94 Rushdale Street
P.O. Box 555 MDA
Australia

CANADIAN OFFICES

Homelite Canada Limited
Homelite Canada Limitée

A Deere & Company Affiliate/
Une Filiale de Deere & Company
1850-55e/th Avenue
Lachine, Québec, Canada H8T 3J5
1-800-363-5715

UNIT 212-214, 590 Ebury Place
New Westminster, B.C. V3M 6K7
1-800-667-3128

20-D Voyager Court South
Etobicoke, Ontario M9W 5M7
1-800-465-2249

Homelite
inc.

A Subsidiary of Deere & Company