

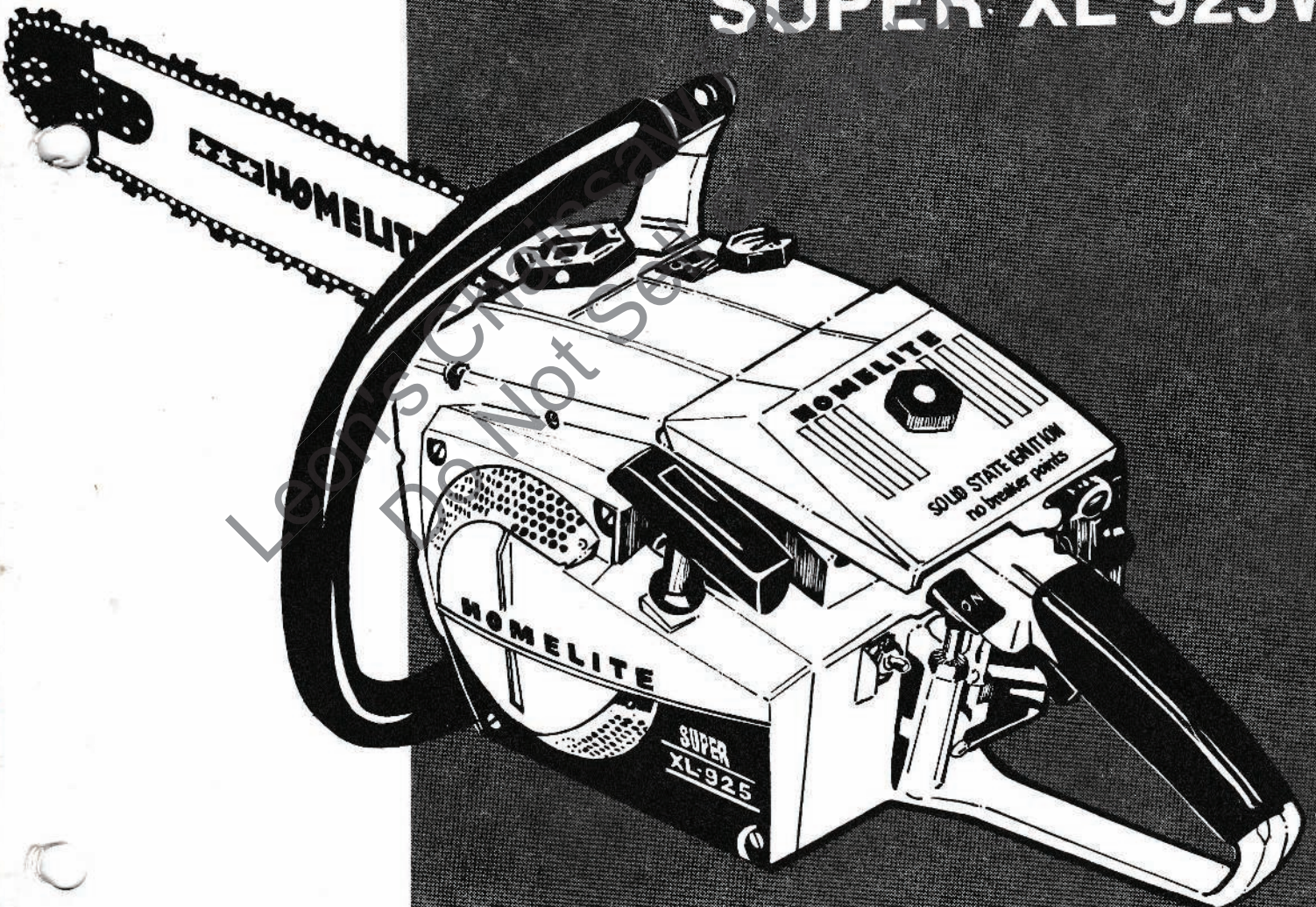
PART NO. 24831 REV. 2
PRINTED IN U.S.A.
PRICE .25

PARTS LIST

HOMELITE
SUPER XL 925

and

SUPER XL 925W



HOMELITE **TEXTRON**

Homelite Division of Textron Inc.

TOOLS

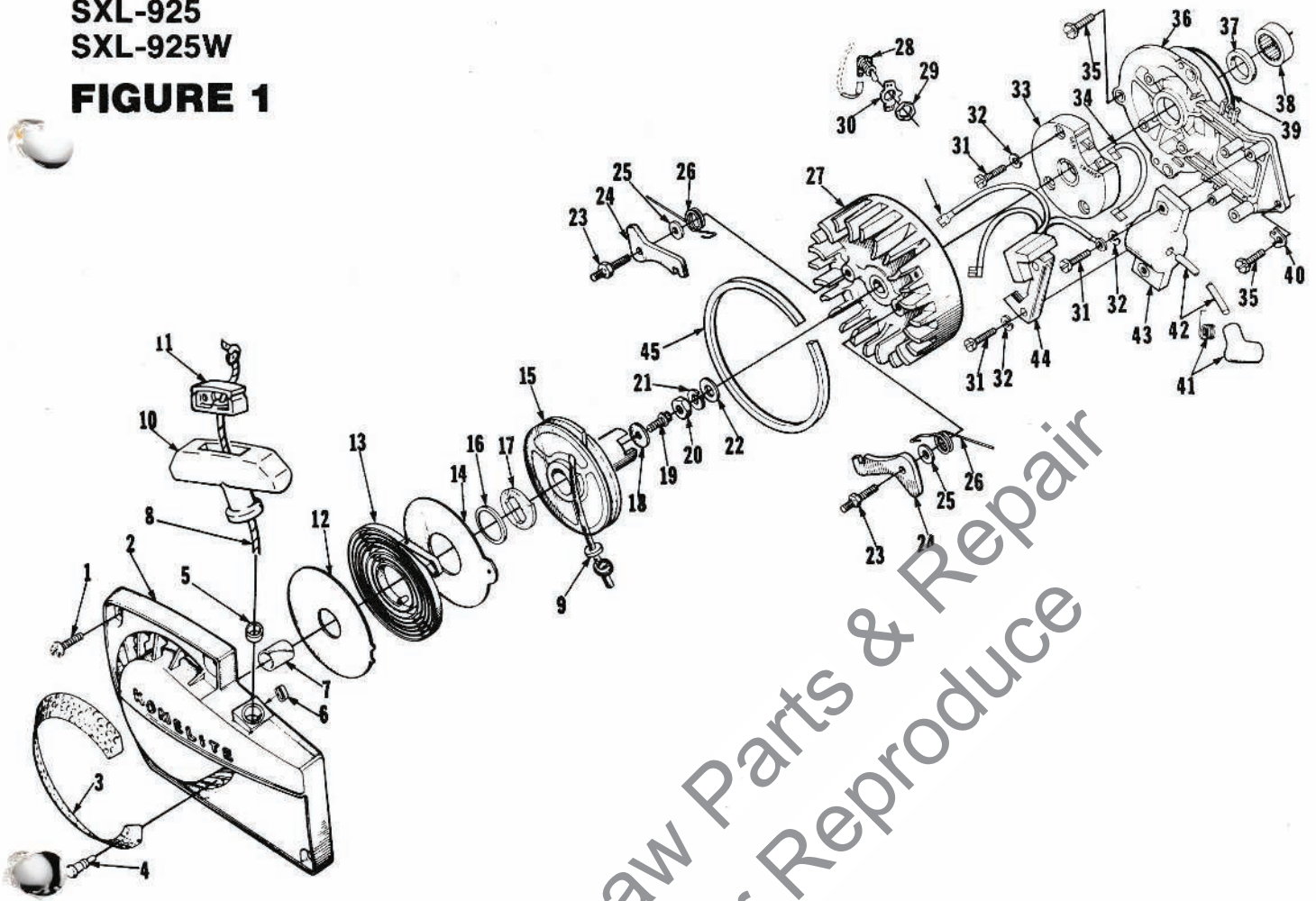
WRENCH- Spanner (3-Shoe)	A-17146
WRENCH- Spanner (6-Shoe)	A-23696-A
Includes:	
PIN- Clutch spanner	23717-A
BIT- Driver torx (Clutch plate) 1/4 shank	24982-01
BIT- Driver torx (Clutch plate) 5/16 shank	24982-02
ANVIL- Bearing disassembling (Back Plate)	23846-2
BIT- Pozidriv #2	24304
COLLAR- Bearing installation	22820-4
JACKSCREW- Crankshaft	A-23965
Includes:	
WASHER	84035
JACKSCREW- Bearing removal (back plate)	A-23962
PLATE- Crankshaft aligning	24006-1
PLUG- Bearing and seal installation (back plate)	23956
PLUG- Bearing installation	23420
PLUG- Bearing installation (conn. rod)	23955
PLUG- Seal installation (Back plate)	24302
PLUG- Seal installation (cankcase)	23957
PULLER- Rotor	A-23960
SHIM- Air gap (Black)	24306
SLEEVE- Bearing and shaft installation	23136-2
SLEEVE- Seal installation (Crankcase)	23972
SLEEVE- Seal protecting (Crankcase)	23971
WRENCH- Combination	A-22808
WRENCH- Hex socket (conn. rod)	23528
WRENCH- Spark plug removal	24094
PULLER- Back plate	A-94147
Includes:	
SCREW- Hex cap (1)	80095
NUT- Hex (3)	81009

ACCESSORIES:

LOCTITE	23488-B
SPIKED BUMPER- (West Coast)	69275
REEL- 250 ft. starting rope, #5	57084-1
KIT- Chain brake	A-93680
Includes:	
COVER- Drivecase	70361-2
SPRING	70093-B
WASHER	12290
BAND- Brake	70346
LEVER- Brake band	12372-3
PIN- Roll	67911
SCREW	78200-A
SCREW- Pan hd. 1/4-20 x 5/8	82258
BRAKE- Lever w/guard	A-12952
SCREW	12955
NUT	81204
DECAL	78290
SPROCKET & DRUM	A-65884
BRACKET	A-93682
RETAINER	93684
SCREW- Fil. hd., 8-32 x 7/8	80220-2
KIT- Hand guard	A-70944
Includes:	
WASHER (2)	58851-2
WASHER (2)	70788
SLEEVE	70911
SCREW	80945
NUT	81225

**SXL-925
SXL-925W**

FIGURE 1

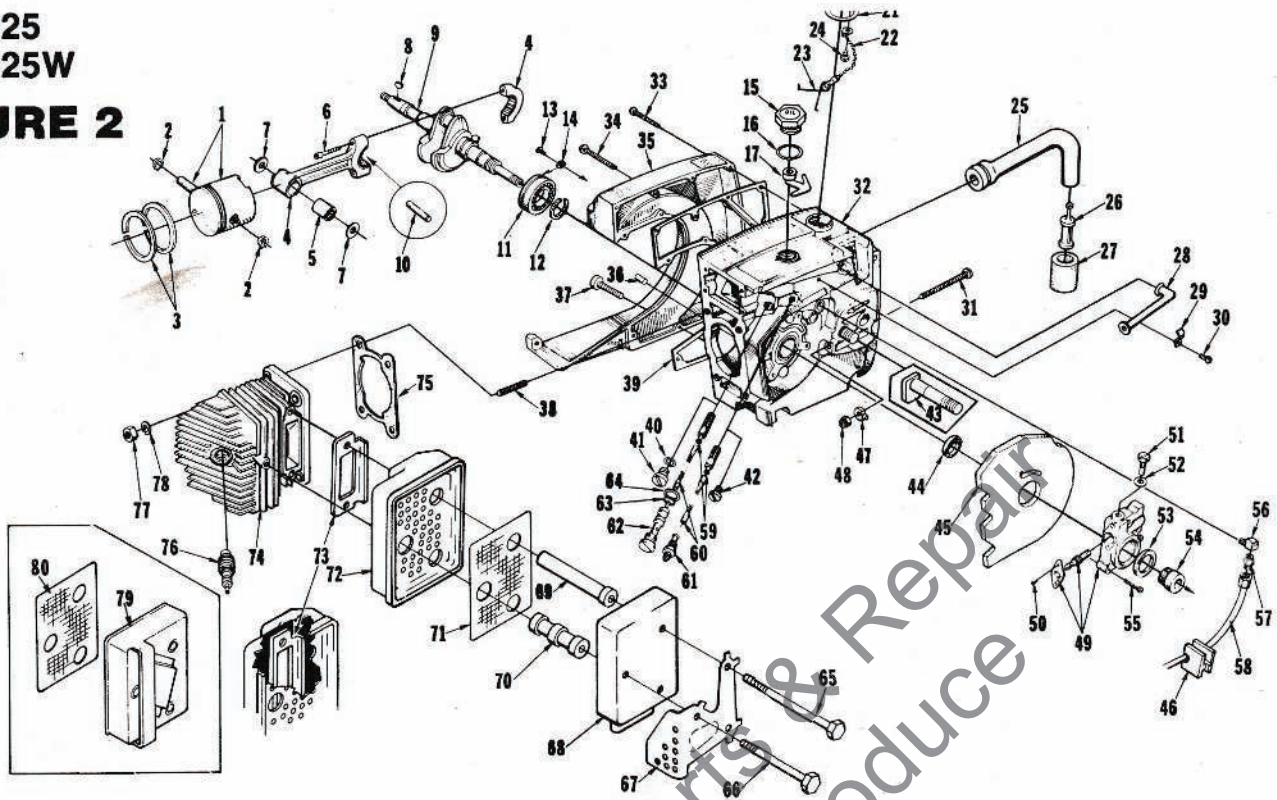


NO.	DESCRIPTION	PART NO.	QTY.	NO.	DESCRIPTION	PART NO.	QTY.
1	SCREW- Hex hd., 12-24 x 5/8	80676	1	24	PAWL- Starter	58756	2
2	HOUSING- Fan	A-64504-C	1	25	WASHER- Lock, #12	70901	2
	Includes:			26	SPRING- Starter pawl	65375-2	2
3	SCREEN- Fan housing	A-64421	1	27	ROTOR- Magneto	67165	1
4	STUD- Drive	67191	4	28	SWITCH- Toggle	A-57650-3A	1
5	BUSHING- Starter rope	67177	1		Includes:		
6	BUSHING- Starter post	64443	1	29	NUT	72084-A1	1
7	BUSHING- Rewind spring	65830	1	30	PLATE- Indicating	70839	1
8	ROPE- Starting	A-93875	1	31	SCREW- Pan, 8-32 x 3/4	82178	7
	Includes:			32	WASHER- Lock, #8	83022	7
9	WASHER	93862	1	33	MODULE- Ignition	67162	1
10	GRIP- Starting rope	A-69962-B	1	34	LEAD- Transformer	67167	1
	Includes:			35	SCREW- Hex hd., 1/4-20 x 5/8	80048	4
11	INSERT- Rope retaining	70018-A	1	36	PLATE- Back	A-67618-A	1
12	SHIELD- Spring (inner)	63566	1		Includes:		
13	SPRING- Rewind	63268-A	1	37	SEAL	12282-A	1
14	SHIELD- Spring (Outer)	63565-A	1	38	BEARING- Roller	63195	1
15	PULLEY- Rewind starter	A-64446	1	39	"O" RING	67559	1
	Includes:			40	WASHER- Tab lock	80218	1
16	BUSHING- Spring lock	64400	1	41	TERMINAL- Spark plug	A-33055	1
17	LOCK- Rewind spring	64049-B	1	42	LEAD- High tension	67166	1
18	WASHER- Retaining	58763	1	43	COIL- Transformer	67164-A	1
19	SCREW- Hex hd., 10-32 x 1/2	80648	1	44	COIL- Core and generator	67163	1
20	NUT- Hex, 3/8-24	81124	1	45	RING- Air flow (see Note #1)	67409	1
21	WASHER- Lock, 3/8	83102	1				
22	WASHER- Flat, 3/8	84010-1	1				
23	STUD- Pawl	58757-E	2				

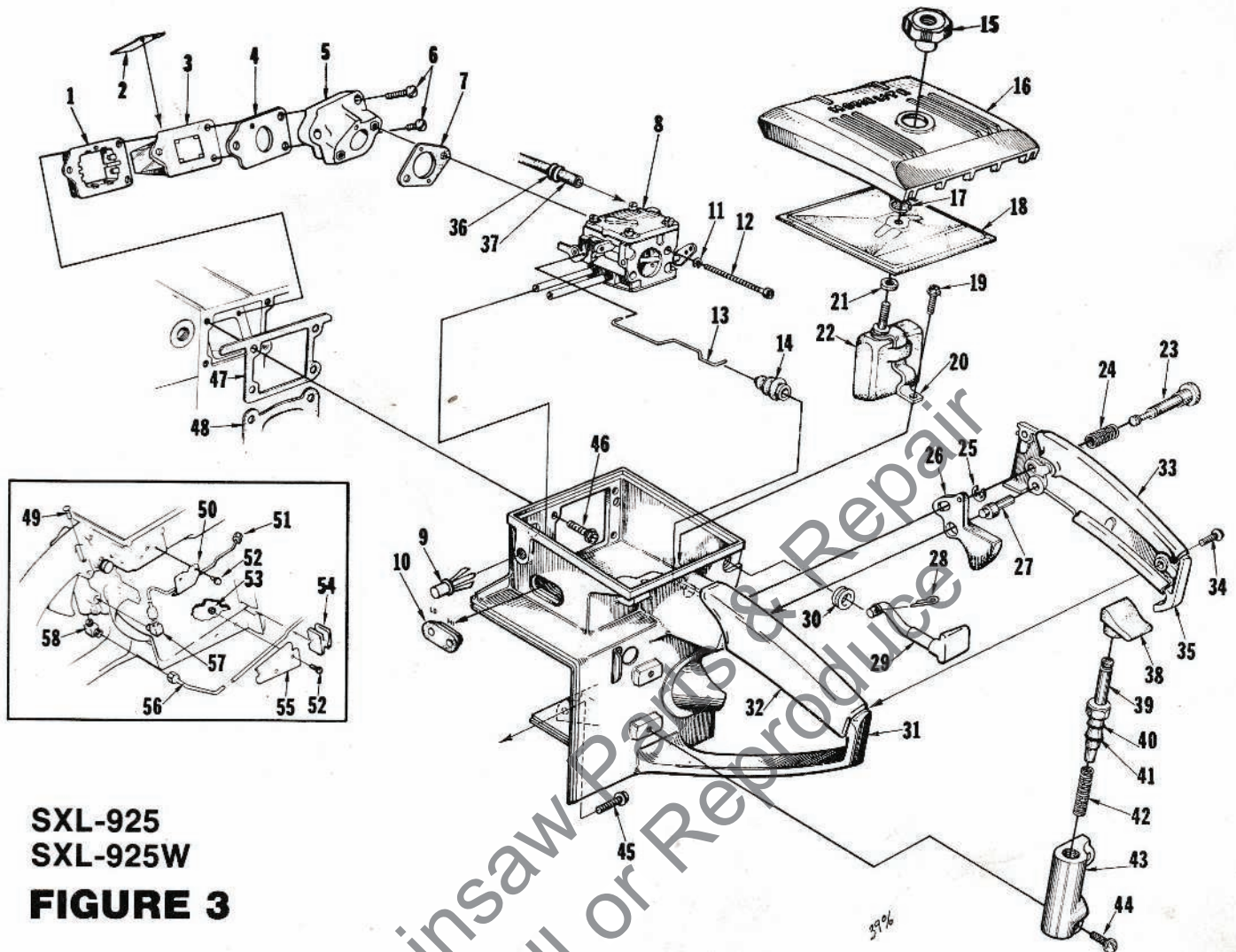
NOTE 1- For Units prior to lot #7045 only.

**SXL-925
SXL-925W**

FIGURE 2



NO.	DESCRIPTION	PART NO.	QTY.	NO.	DESCRIPTION	PART NO.	QTY.
1	PISTON & PIN Includes:	A-69467	1	41	CAP- Oil pump	63115	1
2	RING- Piston pin retaining	64742	2	42	PLUG- Pipe	28097	1
3	PISTON RING	69452	2	43	BOLT- Guide bar	67158	2
4	ROD- Connecting Includes:	A-69658-A	1	44	SEAL	12282-A	1
5	BEARING- Needle	69638	1	45	SHIELD- Sawdust	A-64715	1
6	SCREW- Soc. hd., 8-32 x 9/16	69919	2	46	GROMMET- Oil line	65357	1
7	WASHER- Thrust	68010	2	47	PIN- Guide bar adjusting	93039	1
8	KEY- Woodruff	75078	1	48	NUT- Gripco	81204	1
9	CRANKSHAFT	67168-1	1	49	PUMP- Automatic oil Includes:	A-68265-A	1
10	BEARING- Needle (Set of 28)	A-69056	1	50	SCREW- Pan hd., 4-40 x 1/4	80919	2
11	BEARING- Ball	58190-S	1	51	SCREW- Cam	64102-A	1
12	RING- Retaining	58319-A	1	52	GASKET- Cam screw	59736	1
13	SCREW- Bearing retaining	70306	2	53	SEAL- Felt	59926	1
14	WASHER- Lock	59705	2	54	WORM- Gear	59675	1
15	CAP- Oil filler Includes:	A-65284-B	1	55	SCREW- Fil hd., 8-32 x 3/4	80248	3
16	GASKET- Oil cap	69634	1	56	CONNECTOR- Elbow	31734	1
17	RETAINER	68750	1	57	FITTING- Tube	65696	1
18	CAP- Fuel filler Includes:	A-69500-A	1	58	LINE- Oil (discharge)	A-65682	1
19	VALVE- Check (oval duckbill)	69451	1	59	FILTER- Oil	A-64293	2
20	FILTER- Filler cap	69454	1	60	LINE- Oil pick-up	64356	2
21	GASKET- Fuel cap	69501	1	61	CONNECTOR- Oil filter	65695	1
22	CHAIN- Bead	69502	1	62	TUBE- Oil line	63452-A	1
23	RETAINER	69503	1	63	"O" RING	58406	1
24	SCREW- Pan hd., Plastite, 6 x 1/4	82256	1	64	GASKET- Oil line tube MUFFLER- Downdraft (Complete)	A-69864-B	1
25	LINE- Fuel	65593-A	1	65	SCREW- Hex hd. cap, 1/4-20 x 3	82280	2
26	FILTER- Fuel Includes:	A-69923	1	66	SCREW- Hex hd., 1/4-20 x 2 3/8	69850	1
27	FILTER- Felt	64083	1	67	SHIELD- Muffler	69842	1
28	CONNECTOR- Fuel line	67080	1	68	CAP- Muffler (SXL-925)	A-69836-1	1
29	CLAMP- Fuel line	65597-1	1	69	SUPPORT- Muffler (long)	69843	2
30	SCREW- Pan hd., 6-32 x 5/16	80605	1	70	SUPPORT- Muffler (short)	69844	1
31	SCREW- Guide bar adjusting	63367	1	71	SCREEN- Spark arrestor	A-93900-A	1
32	CRANKCASE Includes:	A-68023-B	1	72	BODY- Muffler	A-69838-1	1
33	SCREW- Fil hd., 8-32 x 5/8	82146	6	73	PLATE- Muffler body	69839	1
34	SCREW- Fil hd., 8-32 x 2-3/16	82155	8	74	CYLINDER- 2-1/6" bore Includes:	A-42206-A	1
35	COVER- Fuel tank	67153-2	1	75	GASKET- Cylinder	63778-1	1
36	PIN- Dowel	63621	1	76	SCREW- Hex hd. cap, 1/4-20 x 5/8 (Not shown)	80402	3
37	SCREW- Fil hd., 8-32 x 1 3/4	82147	1	77	SPARK PLUG- C-J6 Champion	63547-S	1
38	STUD	55871	4	78	SPARK PLUG- C-J4 Champion (optional) (Colder Plug)	69027-S	1
39	GASKET- Fuel tank	67159	1	79	NUT- Hex, 1/4-28	81065-2	4
40	WASHER	58138	1	80	WASHER- Lock, 1/4	83009	4
					KIT- Muffler temperature ("SXL-925W") Includes:	A-94119	1
					SPARK ARRESTOR	A-93900-A	1

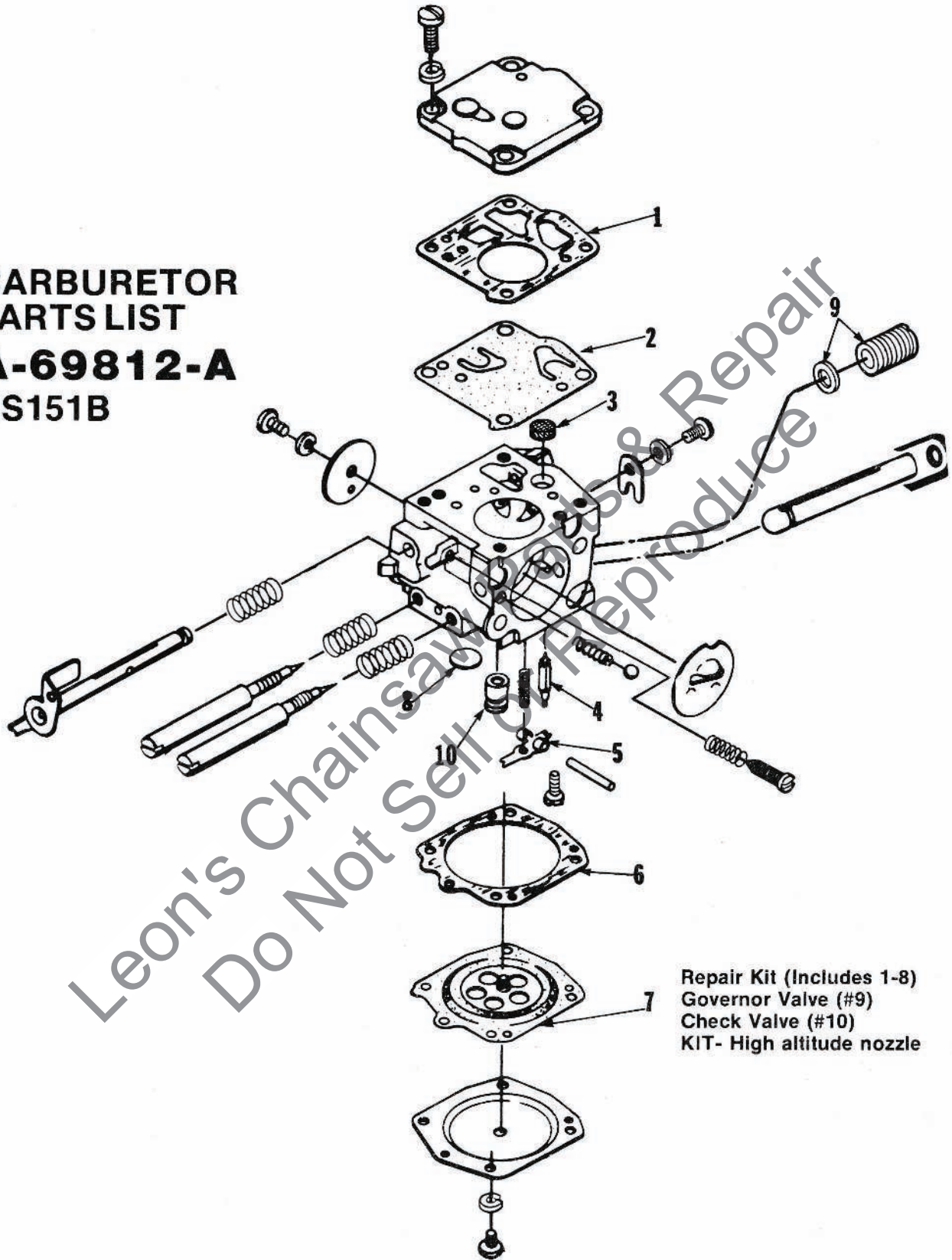


**SXL-925
SXL-925W
FIGURE 3**

NO.	DESCRIPTION	PART NO.	QTY.	NO.	DESCRIPTION	PART NO.	QTY.
1	RETAINER- Reed valve	63370-A	1	32	GRIP- Throttle handle	68767	1
2	VALVE- Reed	63166-A	4	33	GRIP- Throttle handle cover	68768	1
3	SEAT- Reed valve	63371-B	1	34	SCREW- Pan hd., 8-32 x 1/2	80560	2
4	GASKET- Reed valve seat	65483	1	35	COVER- Throttle handle	A-69045	1
5	MANIFOLD- Intake	A-67460-1	1		Includes:		
6	SCREW- Pan hd., 8-32 x 1 1/8	82196	3		BUSHING- Nylon (Not shown)	59064	1
7	GASKET- Carburetor	67540	1	36	GROMMET- Fuel line	68046	1
8	CARBURETOR	A-69812-A	1	37	LINE- Fuel	65718-B	1
	Includes:			38	BUTTON- Oil pump plunger	63622	1
9	PLUG- Plastic	53572	1	39	PLUNGER- Oil pump	A-57834-16	1
10	GROMMET- "Hi-Lo"	69751	1		Includes:		
11	WASHER- Lock, #10	83046	2	40	"O" RING- Shaft	59074	1
12	SCREW- Hex hd., 10-32 x 1 7/8	82179	2	41	"O" RING- Plunger	74388	1
13	ROD- Throttle	63266-A	1	42	SPRING- Compression	59293	1
14	BOOT- Throttle rod	58348	1	43	BODY- Oil pump	63343-5	1
15	NUT- Cover mounting	A-67639	1	44	SCREW- Hex hd., 3-32 x 7/8	80568	2
16	COVER- Air filter element	A-69414-2	1	45	SCREW- Hex hd., 12-24 x 7/8	80891	1
17	RING- Retaining	58319-A	1	46	SCREW- Hex hd., 12-24 x 5/8	80676	4
18	FILTER ELEMENT- Air	69880	1	47	GASKET- Throttle handle	63779-C	1
19	SCREW- Hex hd., 12-24 x 1/2	80821	1	48	GASKET- Cylinder (Fig. 2)	63778-1	1
20	BRACKET- Air filter	A-67101-A	1	49	SCREW- Fil. hd., 8-32 x 5/8	80023-2	1
	Includes:			50	CLAMP- Oil line	65660-1	1
21	GASKET- Mounting nut	58392-1	1	51	LINE- Oil (intake)	A-65705	1
22	DEFLECTOR- Air	70189	1	52	SCREW- Pan hd., 6-32 x 3/8	80571	4
23	PIN- Throttle latch	58924-4	1	53	NUT- Lock, 6-32	81126	2
24	SPRING- Throttle latch	58405	1	54	GROMMET- Oil line	65357	1
25	RING- Retaining	58409	1	55	CLAMP- Oil line	65513	1
26	TRIGGER- Throttle	65745	1	56	LINE- Oil (discharge)	A-65682	1
27	PIN- Throttle latch adjusting	65719	1	57	VALVE- Check	A-65502	1
28	PIN- Cotter	86324	1		Includes:		
29	ROD- Choke	A-68429	1		BALL- (Not shown)	25527	1
	Includes:			58	VALVE- Check	A-65515	1
30	GROMMET	64862	1		Includes:		
31	HANDLE- Throttle	A-68025-D	1		BALL- (Not shown)	25527	1
	Includes:				SPRING- (Not shown)	59022	1
	BUSHING- (Not shown)	68445	1				

ALWAYS FURNISH MODEL AND SERIAL NUMBER WHEN ORDERING PARTS.

**CARBURETOR
PARTS LIST
A-69812-A
HS151B**



Repair Kit (Includes 1-8)	95698
Governor Valve (#9)	70334
Check Valve (#10)	69793
KIT- High altitude nozzle	A-69819

HOMELITE DIVISION OF TEXTRON INC.

P.O. BOX 7047
14401 Carowinds Boulevard
Charlotte, N.C. 28217

Leon's Chainsaw Parts & Repair
Do Not Sell or Reproduce

2086YY

HOMELITE **TEXTRON**

Homelite Division of Textron Inc.