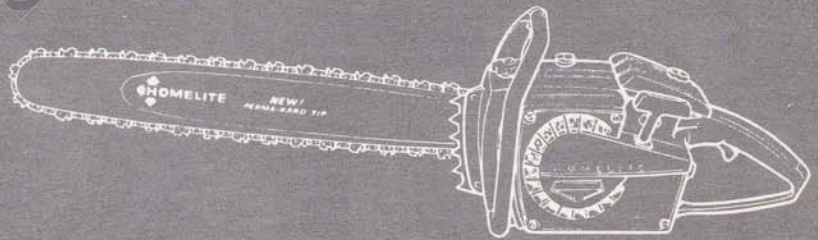


Price .25

CHAIN SAW PARTS LIST

**SUPER
XL-902
XL-910**

HOMELITE®



Leon's Chainbar Parts & Repair
Do Not Sell or Reproduce

SXL-902 & SXL-910

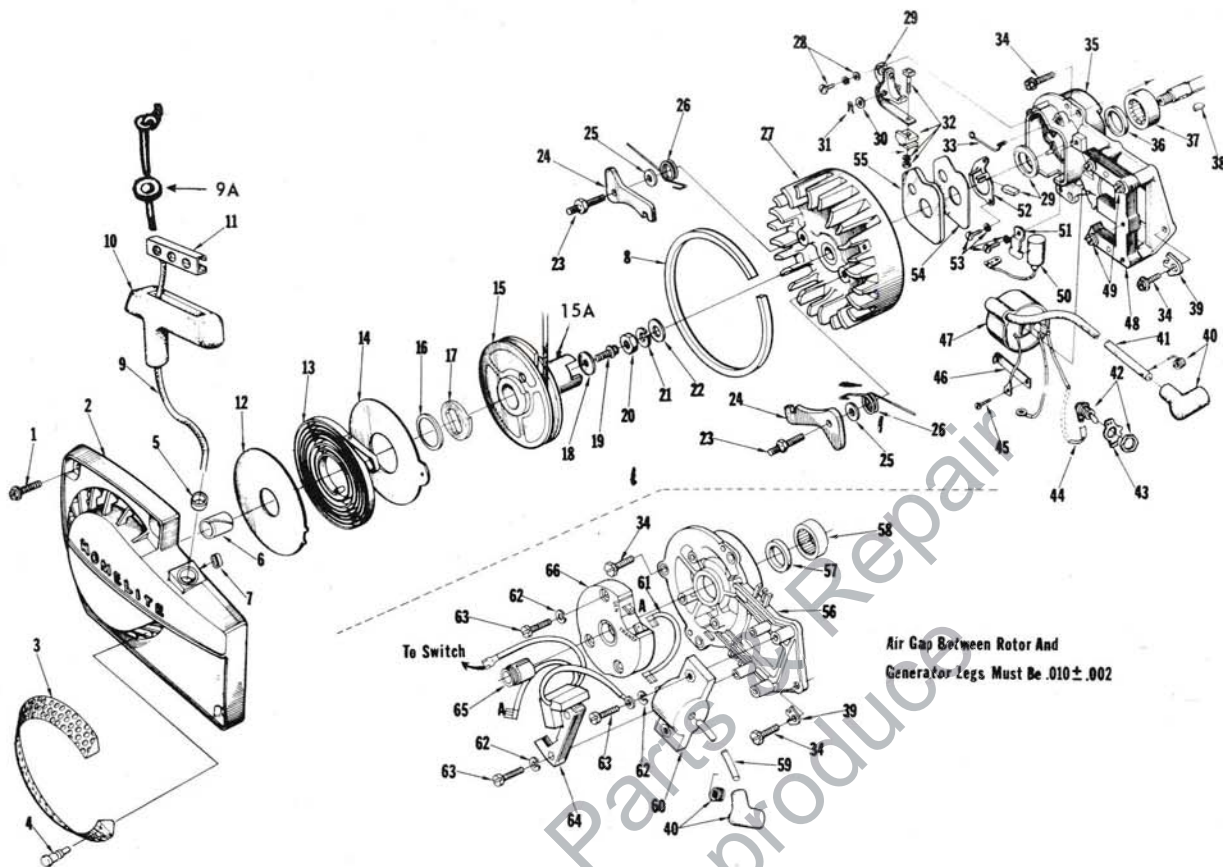


FIGURE 1

No.	Description	Part No.	SXL-902	SXL-910	Qty.	No.	Description	Part No.	SXL-902	SXL-910	Qty.
1	SCREW-hex, 12-24 x 5/8	80676	x	x	4	34	SCREW-hex, 1/4-20 x 5/8	80048	x	x	4
2	HOUSING-fan	A-64504-B	x	x	1	*35	PLATE-magneto back	A-68027-T	x		1
3	Includes: SCREEN-fan housing	64420-1	x	x	1	36	Includes: SEAL	58688-A	x		1
4	STUD	67191	x	x	4	37	BEARING-roller	63195	x		1
5	BUSHING-starting rope	59313	x	x	1	38	KEY-woodruff	75078	x	x	1
6	BUSHING-starter post	64443	x	x	1	*39	WASHER-tab lock	67875-1	x	x	1
7	BUSHING-rewind spring	65830	x	x	1	40	TERMINAL-spark plug	A-33055	x	x	1
8	RING-air flow	67409	x	x	1	41	LEAD-high tension	63632	x		1
9	ROPE-starting	58906-T	x	x	1	42	SWITCH-toggle w/nut	A-57650-3	x	x	1
9A	WASHER, flat	120773	x	x	1	43	PLATE-indicating "On-Off"	72085-A	x	x	1
10	GRIP-starting rope	58915	x	x	1	44	LEAD-ground	A-59031	x		1
11	INSERT-rope retaining	58847	x	x	1	45	SCREW-ground	64090	x		1
12	SHIELD-spring (inner)	63566	x	x	1	46	CLIP-coil retaining	63726	x		1
13	SPRING-rewind	63268-A	x	x	1	47	COIL-ignition	63625	x		1
14	SHIELD-spring (outer)	63565-A	x	x	1	48	CORE-coil	63630	x		1
15	PULLEY-rewind starter	64398-1A	x	x	1	49	SCREW-coil core	64021	x		4
15A	CUP	64399			1	50	CONDENSER	63626	x		1
16	BUSHING-spring lock	64400	x	x	1	51	CLAMP-condenser	63627	x		1
17	LOCK-rewind spring	64049-A	x	x	1	52	RETAINER-felt	63628	x		1
18	WASHER-retaining	58763	x	x	1	53	SCREW-contact plate	55411	x		3
19	SCREW-hex, 10-32 x 1/2	80648	x	x	1	54	GASKET-breaker box cover	63316	x		1
20	NUT-hex, 3/8-24	81124	x	x	1	55	COVER-breaker box	63317	x		1
21	WASHER-lock, 3/8	83102	x	x	1	*56	PLATE-back	A-67618T	x		1
22	WASHER-flat, 3/8	84010-1	x	x	1	57	Includes: SEAL	58688-A	x		1
23	STUD-shoulder	58757-B	x	x	2	58	BEARING-roller	63195	x		1
24	PAWL-starter	58756	x	x	2	59	LEAD-high tension	67166	x		1
25	WASHER	58851	x	x	2	60	COIL-transformer	67164	x		1
26	SPRING-starter pawl	58758	x	x	2	61	LEAD-transformer:	67167	x		1
27	ROTOR-magneto	63406	x		1	62	WASHER-lock, #8	83022	x		7
	ROTOR-magneto	67165	x	1		63	SCREW-pan, 8-32 x 3/4	82178	x		7
28	SCREW-contact plate	76421	x		1	64	COIL-core and generator	67163	x		1
29	POINTS-breaker	A-63631	x		1	65	CAP-dust	64002	x		1
30	Includes: WASHER-point	28028	x		1	66	MODULE-ignition	67162	x		1
31	CLIP-post	28008	x		1						
32	BLOCK-terminal	A-58934	x		1						
33	SPRING-clip cover	76413	x		1						

* Denotes new parts

SXL-902 & SXL-910

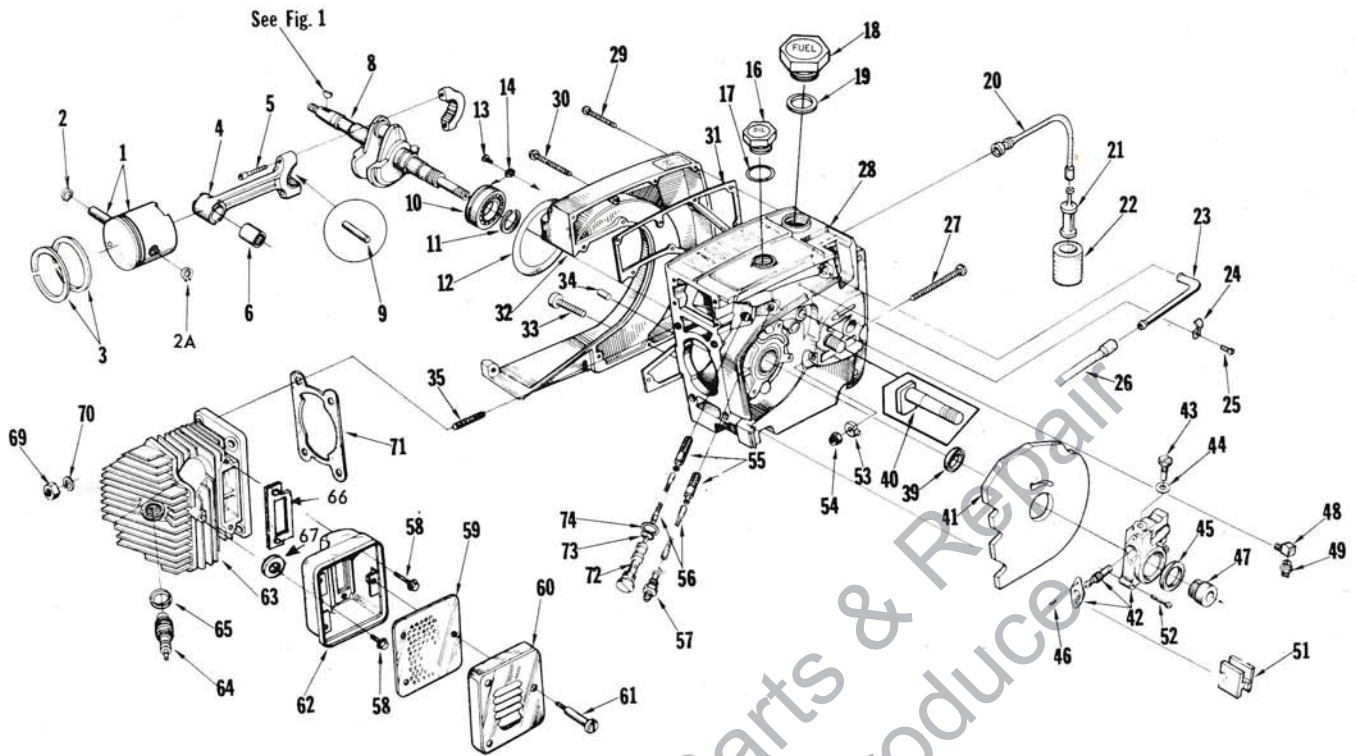


FIGURE 2

No.	Description	Part No.	Qty.	No.	Description	Part No.	Qty.
1	KIT, PISTON	A-121692	1	33	SCREW-fil, 8-32x1 3/4	82147	1
2	Includes: RING-piston pin retaining	55095	1	34	PIN-dowel	63621	2
2A	RING-retaining	120105	1	35	STUD	55871	4
3	PISTON RING	55038	2	39	SEAL	58688-A	1
4	ROD-connecting	A-63309-1	1	* 40	BOLT-guide bar	67158	2
5	Includes: SCREW-socket, 8-32 x 9/16	80805	2	41	SHIELD-sawdust	64156	1
6	BEARING-needle	59351	1	* 42	PUMP-automatic oil	A-68265	1
8	CRANKSHAFT	59625-2	1	43	Includes: SCREW-cam	64102-A	1
9	BEARING-needle (28 rollers)	A-64621	1	44	GASKET-cam screw	59736	1
10	BEARING-ball	58190-S	1	45	SEAL-felt	59926	1
11	RING-retaining	58319-A	1	46	SCREW-pan, 4-40 x 1/4	80919	2
* 12	"O" RING	67559	1	47	WORM-gear	59675	1
13	SCREW-bearing retaining	59704	2	48	CONNECTOR-elbow	31734	2
14	WASHER-lock	59705	2	49	FITTING-tube	65696	1
16	CAP-oil filler	A-65284-T	1	51	GROMMET-oil line	65357	1
17	Includes: "O" RING VALVE-check (not shown)	65133	1	52	SCREW-fil, 8-32 x 3/4	80248	3
		63718	1	53	PIN-guide bar adjusting	67586-1	1
18	CAP-fuel filler	A-65283-T	1	54	NUT-flexloc, 1/4-20	81108	1
19	Includes: GASKET VALVE-check (not shown)	58957	1	55	FILTER-oil	A-64293	2
		63718	1	56	LINE-oil pick-up	64356	2
20	LINE-fuel (flexible)	65593	1	57	CONNECTOR-oil filter	65695	1
21	FILTER-fuel	A-59251	1	58	SCREW-hex, 12-24 x 5/8	121430	3
22	Includes: FILTER-fuel	59253	1	59	BAFFLE-muffler	65633	1
23	CONNECTOR-fuel line	67080	1	60	CAP-muffler	63520-3T	1
24	CLAMP-fuel line	65597-1	1	61	SCREW-shoulder	63855-A	3
25	SCREW-pan, 6-32 x 5/16	80605	1	62	BODY-muffler	A-63535-1T	1
26	LINE-fuel	65718	1	63	CYLINDER-2" bore	63012-2AT	1
27	SCREW-guide bar adjusting	63367	1	64	SPARK PLUG	63547-S	1
* 28	CRANKCASE & TANK	A-68023-T	1	65	Includes: GASKET	25038	1
29	Includes: SCREW-fil, 8-32 x 5/8	82146	6	66	GASKET, muffler	120910	1
30	SCREW-fil, 8-32 x 2-3/16	82155	8	67	WASHER, muffler	84008	1
31	GASKET-fuel tank	67159	1	69	NUT-hex, 1/4-28	81065-2	4
32	COVER-fuel tank	67153-2	1	70	WASHER-lock, 1/4	83009	4
				71	GASKET-cylinder	63778-1	1
				72	TUBE-oil line	63452-A	1
				73	"O" RING	58406	1
				74	GASKET-oil line tube	63751	1

* Denotes new parts

SXL-902 & SXL-910

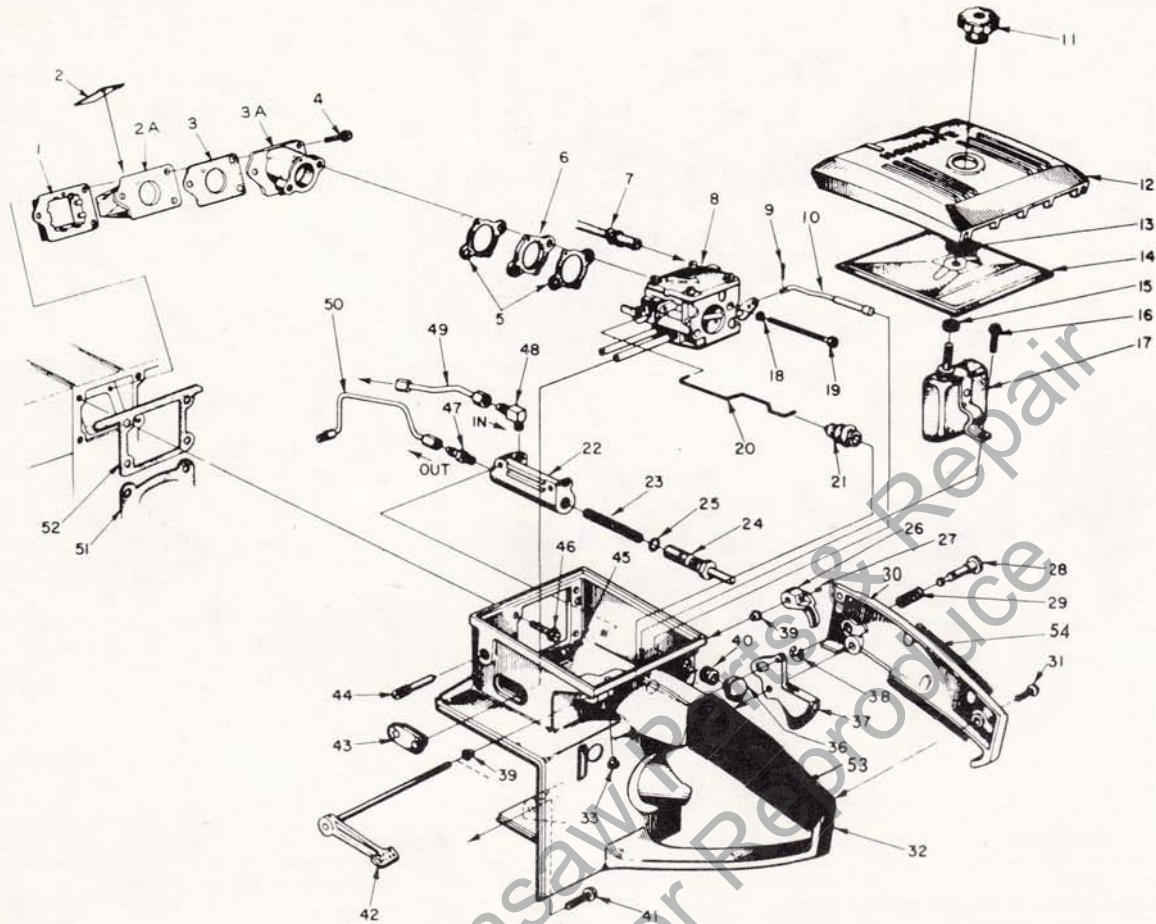


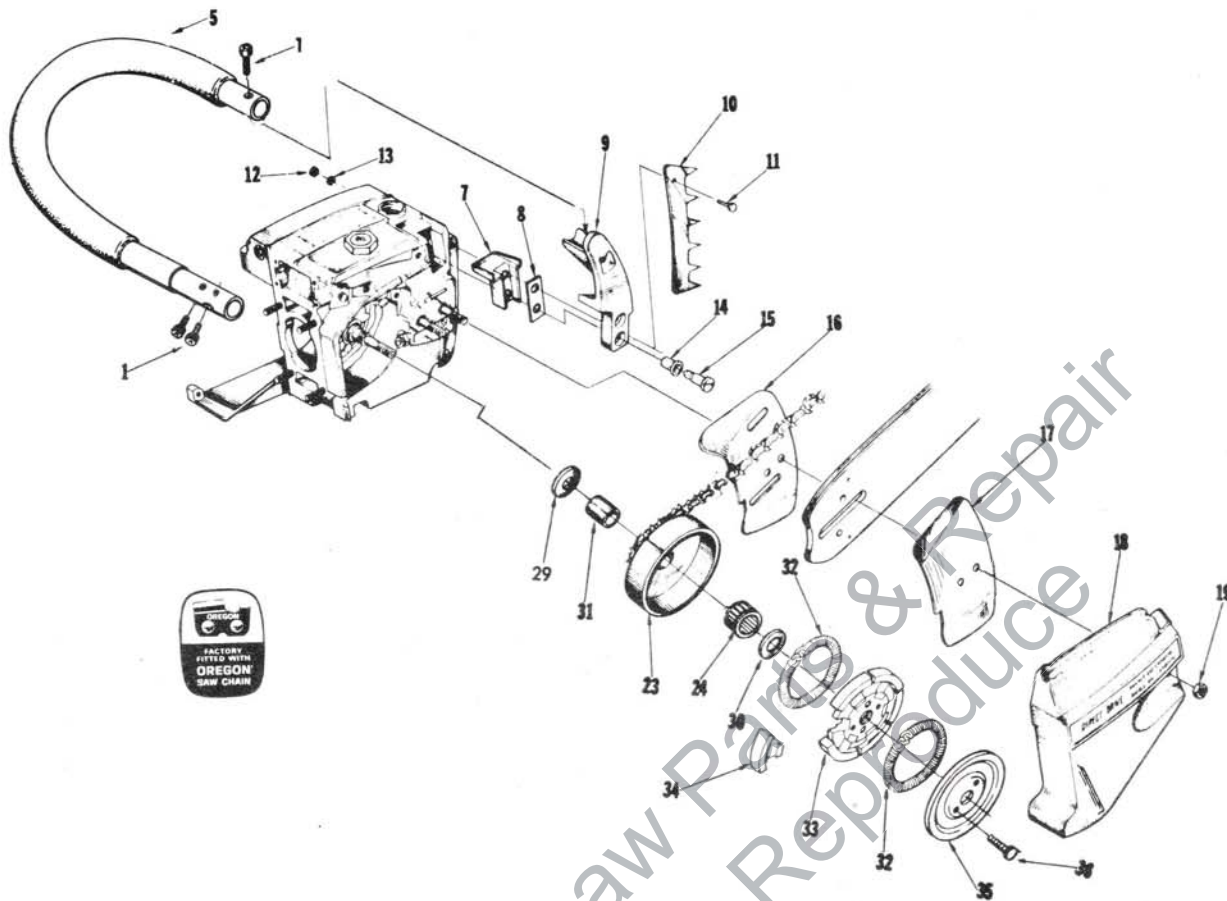
FIGURE 3

No.	Description	Part No.	Qty.	No.	Description	Part No.	Qty.
1	RETAINER - reed valve	63370-A	1	26	LEVER - oiler	63280-2A	1
2	VALVE - reed	63166-A	4	27	SCREW - Fil. Ho. 8-32 x 1/4	80018	1
2A	SEAT - reed valve	63371-B	1	28	PIN - throttle lock	58924-4	1
3	GASKET - seat	65483	1	29	SPRING - lock	58405	1
3A	SPACER - reed valve seat	63019-1A	1	*30	COVER - throttle handle	A-121853	1
4	SCREW -	65489	3	Includes: BUSHING - pin	59064	1	
5	GASKET - carburetor	63254	2	31	SCREW - pan, 8-32 x 1/2	80560	2
6	SPACER - carburetor	63256	1	*32	HANDLE - throttle	A-68025T	1
7	LINE - fuel	65718	1	Includes: BUMPER - rubber	56298	1	
8	CARBURETOR	A-65578	1	36	BUTTON	57289-1	1
9	PIN - cotter	86324	1	37	THROTTLE - trigger	58859	1
10	ROD - choke	120858	1	38	RING - retaining	58409	1
*11	NUT - cover mounting	A-67639	1	39	BUSHING - throttle handle	63400	2
12	COVER - air filter	63634-1	1	40	GROMMET	58362	1
13	RING - retainer	58319-A	1	41	SCREW - hex, 12-24 x 7/8	80891	1
14	FILTER ELEMENT - air	63341	1	42	LEVER - oiler w/shaft	A-63327	1
15	GASKET - mounting nut	58392-1	1	43	GROMMET	64664	1
16	SCREW - hex, 12-24 x 1/2	80821	1	44	SCREW - idle adjustment	63369	1
17	DEFLECTOR - air, w/bracket	A-67101	1	45	SCREW - sl. hex, 8-32 x 1/2	80983	2
18	WASHER - lock, #10	83046	2	46	SCREW - hex, 12-24 x 5/8	80676	4
19	SCREW - hex, 10-32 x 2	80965	2	47	VALVE - check (outlet)	A-65948	1
20	ROD - throttle	63266-A	1	48	VALVE - check (inlet)	A-65502	1
21	BOOT - throttle rod	58348	1	49	LINE - oil (intake)	120856	1
22	BODY - oil pump	63343-7	1	50	LINE - oil	120862	1
23	SPRING - plunger	59293	1	51	GASKET - cylinder	63778-1	1
24	PLUNGER - oil pump	A-57834-14	1	52	GASKET - throttle handle	63779-B	1
Includes: "O" RING - shaft	59074	1	*53	GRIP, Throttle handle	68767	1	
Includes: "O" RING - plunger	74388	1	*54	GRIP, Throt. Hand. cover	68768	1	

*Denotes new parts

ALWAYS FURNISH MODEL AND SERIAL NUMBER WHEN ORDERING PARTS.

SXL-902 & SXL-910



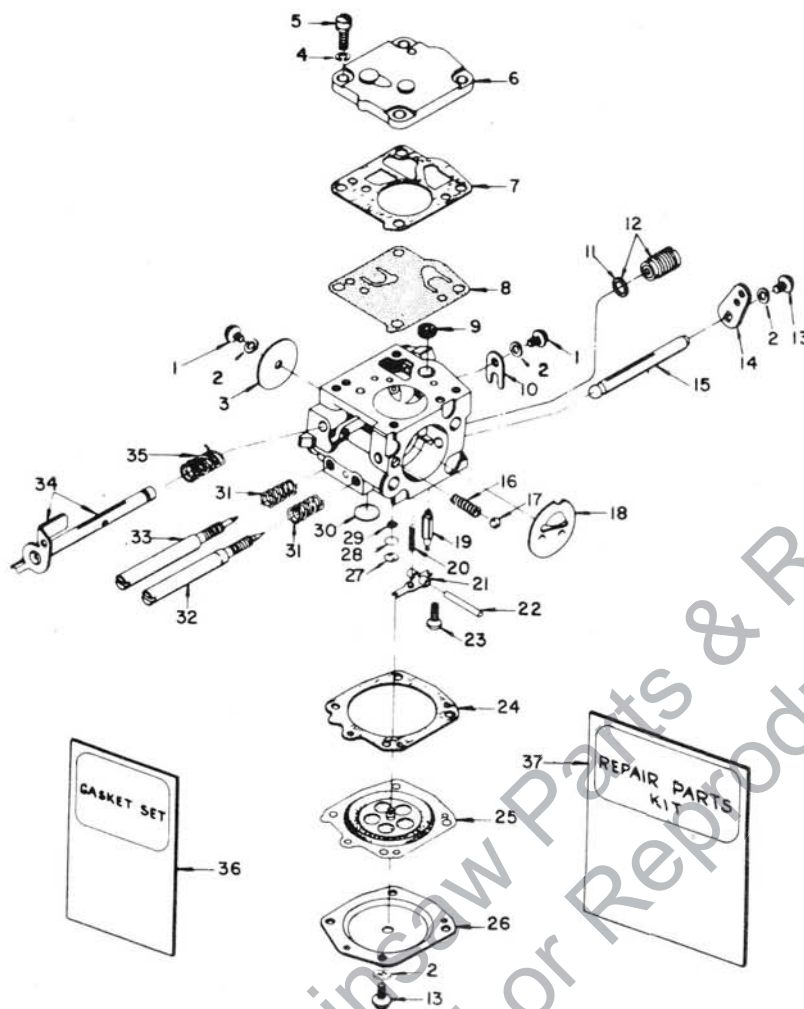
No.	Description	Part No.	Qty.	No.	Description	Part No.	Qty.
1	SCREW, fil hd 1/4-20 x 1	80060	3	16	PLATE-guide bar (inner)	67160	1
*5	HANDLE BAR - Flush cut	A-121854-1	1	17	PLATE-guide bar (outer)	67161	1
	Wrap around	A-67626-3T	1	18	COVER-drivecase	67156-4T	1
*7	MOUNT - Shock	65509	1	19	NUT-hex, 3/8-16	81089-2	2
8	PLATE, Handle bar bracker	65598	1	23	SPROCKET & DRUM-3/8 pitch, 8 tooth	A-65885-T	1
*9	BRACKET, Handle bar flush	68766-2	1	24	Includes: BEARING-roller	64124	1
	Handle bar Wrap	121513-2	1	*29	WASHER, thrust	121895	1
	(NOTE: Use 2 screws, no. 80867 with bracket, no. 121513-2)			30	WASHER-thrust	63462	1
10	KIT - spiked bumper	A-63720	1	31	RACE-inner	64129	1
11	includes: SCREW-hex, 12-24 x 3/4	80867	2	*32	SPRING-clutch	67441	2
12	NUT- 12-24	81068	2	*33	SPIDER-clutch	55723-2	1
13	WASHER-lock, #12	83056	2	*34	SHOE-clutch	87896-1	6
*14	GROMMET	65519	2	*35	COVER-clutch	58751-1	1
15	SCREW-shoulder (see note item 9)	65521	2	36	SCREW-hex, 10-32 x 1/2	80361-1	2

*Denotes new parts

SPECIAL TOOLS (available on order)

Part No.	Description	Part No.	Description
A-23937-B	COMBINATION WRENCH (Note: use A-23937 for wrap around)	23987	SHIM - point gap
22828	PLIERS - piston snap ring	24306	SHIM - air gap (910)
23528	WRENCH - socket screw (conn. rod)	C-50957	WRENCH - spanner (clutch)
23955	PLUG - bearing installation (conn. rod)	A-23960	PULLER - rotor
A-23965	JACKSCREW	23420	PLUG - bearing installation (sprocket)
23136-1	BODY - jackscrew	23956	PLUG - bearing and seal installation (back plate)
24302	PLUG - seal installation (back plate 910)	23846-2	ANVIL - bearing disassembling (back plate)
22820-4	COLLAR - bearing installation	24006-1	PLATE - crankshaft aligning
23846-1	ANVIL - crankshaft installation	120875	BIT - posidrive No. 2
23971	SLEEVE - seal protecting (crankcase)		PAINT
23972	SLEEVE - seal installation (crankcase)	22772	SPRAY CAN - black
23957	PLUG - seal installation (crankcase)	23475	SPRAY CAN - red
		23560	SPRAY CAN - white

SXL-902 & SXL-910



Assembly Number
A-65578

TILLOTSON MODEL HS-56A

No.	Part No.	Description	Qty.	No.	Part No.	Description	Qty.
1	80264	† SCREW - rd. hd., 4-40 x 3/16	2	19	59717	† NEEDLE - inlet	1
2	83008-1	† WASHER - lock, #4	4	20	55759	† SPRING - control lever	1
3	25050	SHUTTER - throttle	1	21	59716	† LEVER - inlet control	1
4	83024	WASHER - lock, #6	1	22	58977	† PIN - control lever fulcrum	1
5	80275	SCREW - fl. hd., 6-32 x 3/8	4	23	65798	† SCREW - oval hd., 4-40 x 1/4	1
6	58975	COVER - fuel pump diaphragm	1	24	58978	GASKET - main diaphragm	1
7	58981	GASKET - pump diaphragm	1	25	58988	† DIAPHRAGM - main control	1
8	58980-R	† DIAPHRAGM - fuel pump	1	26	58979	COVER - main diaphragm	1
9	58974	† SCREEN - fuel inlet	1	27	58994	† PLUG - extension (small)	1
10	58982	CLIP - throttle shaft retaining	1	28	57819	RING - retaining	1
11	74060	GASKET	1	29	59500	SCREEN - channel	1
12	A-65801	VALVE - governor	1	30	58991	† PLUG - extension (large)	1
13	80591	SCREW - rd. hd., 4-40 x 1/4	5	31	73075	† SPRING - adjustment needle	2
14	65800	LEVER - choke	1	32	63676	† SCREW - main adjustment	1
15	65799	SHAFT - choke	1	33	63677	† SCREW - idle adjustment	1
16	73264	SPRING - choke friction	1	34	A-63345	SHAFT - throttle w/lever	1
17	25527	BALL - check	2	35	59460	† SPRING - throttle opening	1
18	58984	SHUTTER - choke	1	36	65895	† GASKET SET	1
				37	65896	REPAIR KIT	1

† Indicates contents of Repair Kit.

* Denotes new parts.

ALWAYS FURNISH MODEL AND SERIAL NUMBER WHEN ORDERING PARTS.

PART NO. 121856



TERRY INDUSTRIES

A DIVISION OF **Textron** CANADA LIMITED

180 Labrosse Ave., Pointe Claire, Que.

