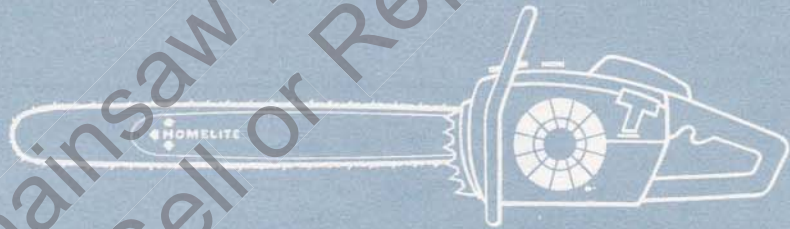


P. Borne

**SUPER
XL-67**

**PARTS
LIST**



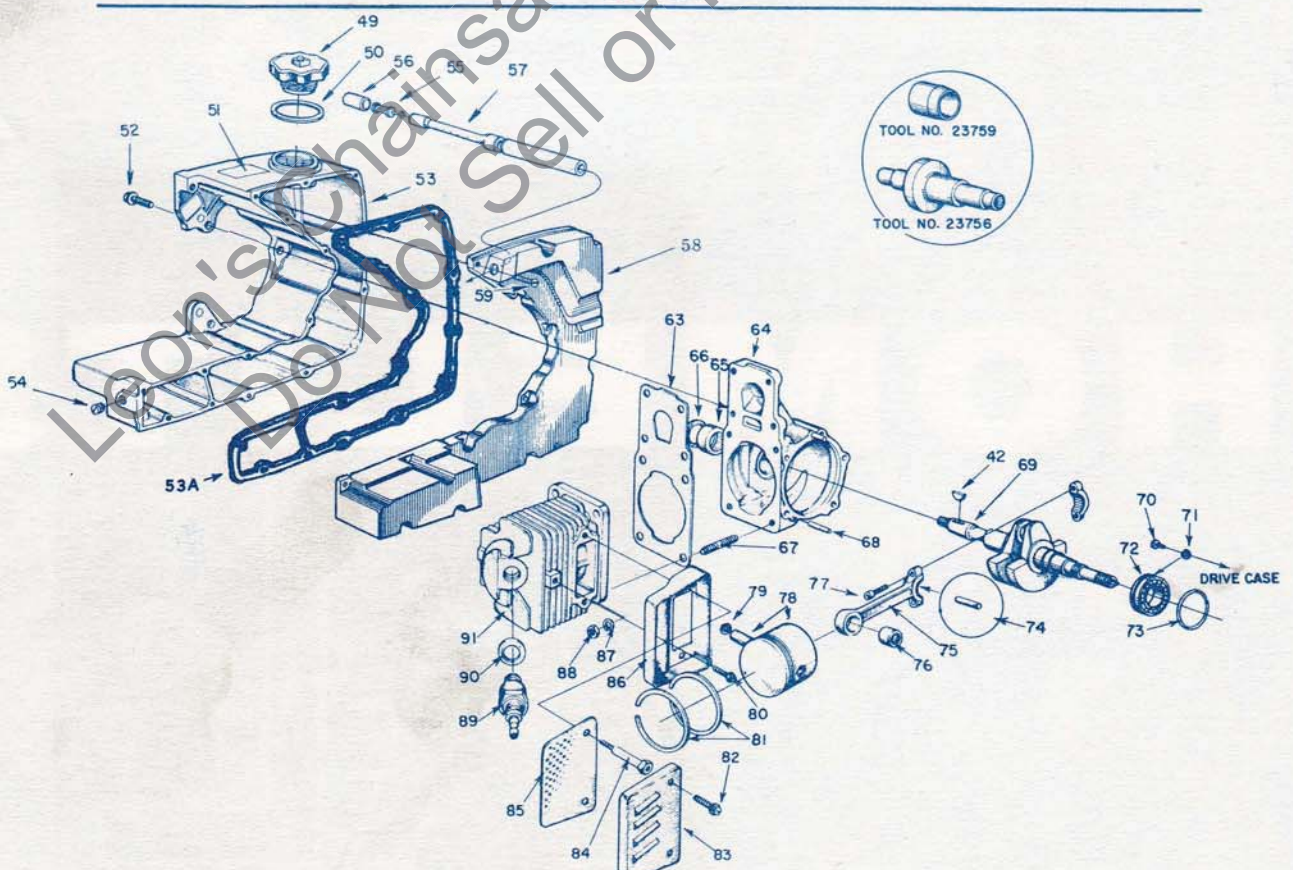
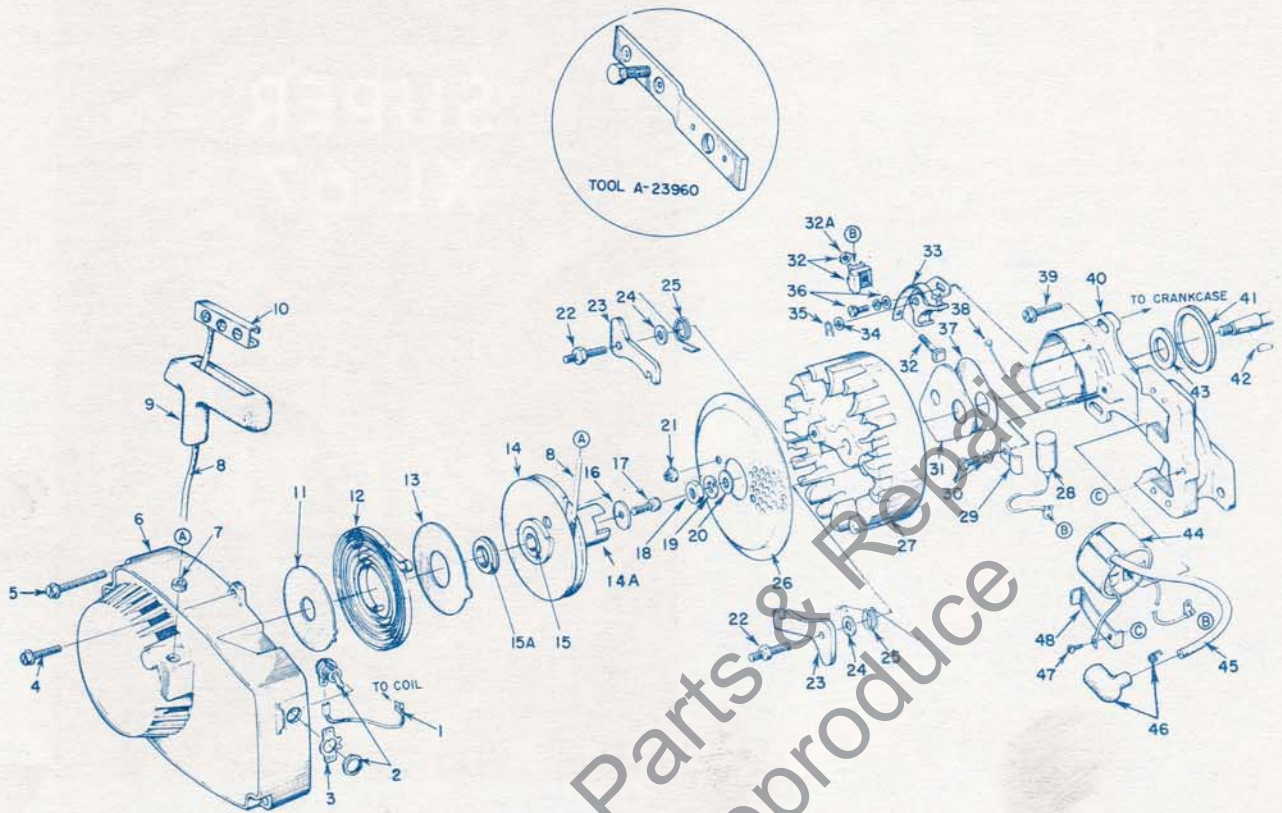
HOMELITE®

XL

CHAIN SAWS

*Leon's Chainsaw Parts & Repair
Do Not Sell Or Reproduce*

HOMELITE SUPER XL-67 CHAIN SAW



ALWAYS FURNISH MODEL AND SERIAL NUMBER WHEN ORDERING PARTS.

HOMELITE SUPER XL-67 CHAIN SAW

No.	Description	Part No.	Qty.	No.	Description	Part No.	Qty.
1	LEAD - ground w/term.	A59031	1	46	TERMINAL	A33055	1
2	SWITCH - w/nut	A57650-3	1	47	SCREW - coil clip	"W" 58872	1
3	PLATE - "ON" - "OFF"	72085-A	1			"P" 55977	1
4	SCREW - hex, 12-24 x 5/8	80676	1	48	CLIP - coil retaining	"W" 63726	1
5	SCREW - hex, 12-24 x 1 11/16	58963	3			"P" 59863	1
6	HOUSING - fan	A64516	1	49	CAP - fuel filler	A64140-A	1
	Includes: BUSHING - starter post	64443	1	50	Includes: GASKET	58957	1
7	BUSHING - rope	59313	1	51	DECAL	64144	1
8	ROPE - starter	58806	1	52	SCREW - shoulder	63407	3
9	GRIP - rope	58915	1	* 53	TANK - fuel	58732-4	1
10	INSERT	58847	1	* 53A	GASKET	120184	1
11	SHIELD - spring (inner)	59638-A	1	54	PLUG - pipe 1/16-27	59571	1
12	SPRING - recoil	58764-A	1	55	FILTER ASSEMBLY	A59251	1
13	SHIELD - spring (outer)	59639-A	1	56	Includes: FELT	59253	1
14	PULLEY - starter	64398-1	1	57	LINE - fuel, flexible	63745	1
14A	CUP	64399	1	* 58	COVER - tank	63739-2	1
15	LOCK - spring	64049-A	1	* 59	SCREW - rd. hd. #8 x 1/2	82135	16
15A	BUSHING - spring lock	64400	1	63	GASKET	58513	1
16	WASHER - retaining	58763	1	64	CRANKCASE	A58799-D	1
17	SCREW - hex, 10-32 x 1/2	80648	1	65	Includes: BEARING	58956	1
18	NUT - hex, 5/16-24	81117	1	66	SEAL	58688-A	1
19	WASHER - lock, 5/16	83002	1	67	STUD	55871	4
20	WASHER - flat, 5/16	84056	1	68	PIN - dowel	63621	2
21	NUT - lock, 10-32	81109-2	2	69	CRANKSHAFT	63498	1
22	STUD - shoulder	58757-B	2	70	SCREW - bearing retainer	59704	2
23	PAWL - starter	58756	2	71	WASHER - lock	59705	2
24	WASHER	58851	2	72	BEARING - ball	58190-S	1
25	SPRING - starter finger	58758	2	73	RING - retaining	58319-A	1
26	SCREEN - starter	58765	1	74	ROLLER - set (31)	A63496	1
27	ROTOR - magneto	"W" 58809	1	75	ROD - connecting	A63477	1
		"P" 59857	1	76	Includes: BEARING	58724	1
28	CONDENSER	"W" 63250	1	77	SCREW	80889	2
	w/clamp	"P" 59862	1	78	PISTON & PIN	A59468-A	1
29	CLAMP - condenser	"W" 59622	1	79	Includes: RING - retainer	75120	1
30	SCREW GROUP - condenser	"W" 30261	1	80	SCREW - pan hd. 12-24 x 1/2	80963	1
		"P" 57750	1	81	PISTON - ring	59436	2
31	COVER - breaker box	"W" 58811	1	82	SCREW - hex 10-32 x 9/16	80825	2
		"P" 59864	1	83	CAP MUFFLER	A63246	1
32	TERMINAL BLOCK GROUP	"W" A58934	1	84	STUD	59891	2
		"P" 55982	1	85	BAFFLE	59050	1
32A	NUT (only) - terminal	"W" A58914	1	86	BODY - muffler	A-59895	1
33	POINT SET - w/felt	"W" 28028	1	87	WASHER - lock 1/4"	83009	4
34	Includes: WASHER - point	"W" 28008	1	88	NUT - 1/4-28	81065-2	4
35	CLIP - post	"W" 28008	1	89	SPARK PLUG	63710-S	1
33	POINT SET w/felt and terminal block	"P" A59861	1	90	Includes: GASKET	25038	1
36	SCREW GROUP - points	"W" 76421	1	91	CYLINDER	58706-B3	1
		"P" 57749	1				
37	GASKET - cover	"W" 58810	1				
		"P" 59865	1				
38	SPRING - cover (clip)	"W" 76413	1				
		"P" 59866	1				
39	SCREW - hex, 12-24 x 9/16	80899	3				
40	BOX - breaker	"W" 58875-A	1				
		"P" 59859	1				
41	GASKET	59538	1				
42	KEY - rotor	75078	1				
43	SEAL - felt	59760	1				
44	COIL	"W" 58874	1				
		"P" 59860	1				
45	LEAD - hi-tension	58966	1				

IGNITION TYPE - "W" INDICATES WICO "P" INDICATES PHELON
DO NOT INTERCHANGE PARTS

* Fuel Tank Assembly, Part No. A-63904-T

ACCESSORIES - available from your HOMELITE Dealer.

EXCHANGER - heat #A-63442

HOMELITE SUPER XL-67 CHAIN SAW

No.	Description	Part No.	Qty.	No.	Description	Part No.	Qty.
1	GASKET - spacer	59274	1	29	GROMMET - "Lo-Hi"	59058	1
2	SPACER	59718	1	30	SPRING	59293	1
3	LINE - fuel	63745	1	31	PLUNGER	A-58734-14	1
4	CARBURETOR	A-59504-C	1	32	INCLUDES: "O" RING	74388	1
5	PIN - cotter	86324	1	33	"O" RING	59074	1
6	ROD, choke	A-58826	1	34	REED	59678-A	4
7	INSTRUCTIONS	59221	1	35	RETAINER - reed	63260	1
8	COVER	58773-5	1	36	SEAT - "DELFIN"	63253	1
9	NUT - cover	A-58882	1	37	GASKET - carburetor	59722	1
10	RING - retaining	111352	1	38	SCREW - idle 5/16-18	63302	1
11	FILTER ELEMENT	63589	1	43	CAP - oil filler	A-56580-1	1
12	GASKET - stud	58392-1	1	44	INCLUDES: GASKET	56607	1
13	BRACKET - cover	A-58818-A	1	45	DRIVECASE & COVER	A-59951-B	1
14	ROD - throttle	59763	1	46	INCLUDES: Pin - cotter	86301	1
15	BOOT - rod	58348	1	47	STUD, guide bar	59764-A	2
16	WASHER - lock #10	83046	2	48	INSERT	59896	2
17	SCREW - hex, 10-32 x 2 11/16	80921	2	49	SEAL	58308-A	1
18	PIN - throttle lock	58924	1	50	SCREW - hex 12-24 x 1	80864	1
19	SPRING - throttle lock	58405	1	51	NUT - lock 1/4-20	81108	1
20	COVER - handle	A-59213	1	52	PIN - bar adjusting	58783-1	1
	Includes: Bushing	59064	1	53	SCREW - pin 1/4-20 x 2	63225	1
21	SCREW - pan 8.32 x 1/2	80560	2	54	CONNECTOR	59937	1
22	RING - retaining	58409	1	55	LINE - oil	59674	1
23	TRIGGER - throttle	58859	1	56	FILTER - oil	A-59009	1
24	SCREW - hex 12-24 x 7/8	80891	5	64	SCREW - hex 12-24 x 9/16	80899	4
25	GROMMET	58362	1	66	PLUG - grommet	63847	1
26	BUTTON	57289-1	2	67	GROMMET	59794	1
27	VALVE - check	A-59011	1	68	GASKET	63355	1
28	HOUSING & HANDLE	A-59931-A	1				
	INCLUDES: PLUG 10-32	71505	1				
	PLUG 5/16-18	63303	1				
	PIN - cotter	86301	1				
	FELT	63290	1				

Leon's Chainsaw Parts & Repair
Do Not Sell or Reproduce

HOMELITE SUPER XL-67 CHAIN SAW

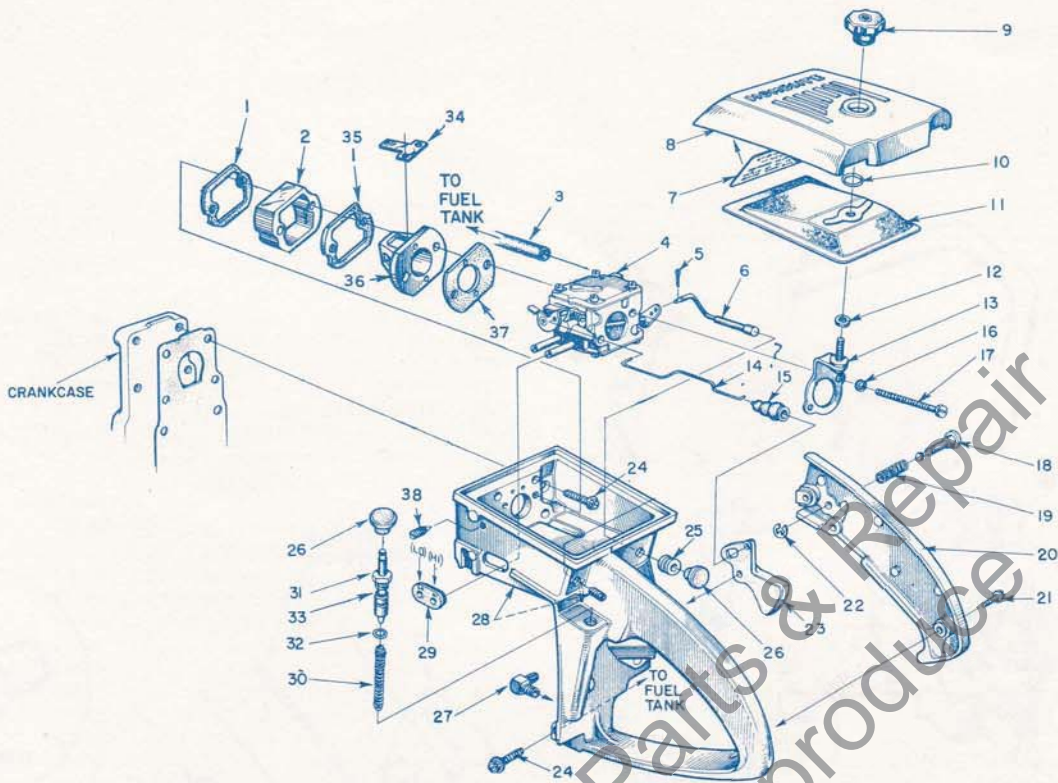


FIGURE 3

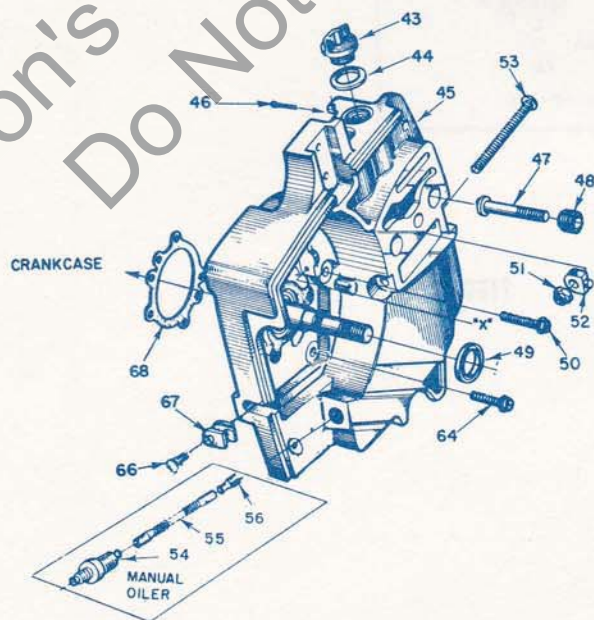


FIGURE 4

ALWAYS FURNISH MODEL AND SERIAL NUMBER WHEN ORDERING PARTS.

HOMELITE SUPER XL-67 CHAIN SAW

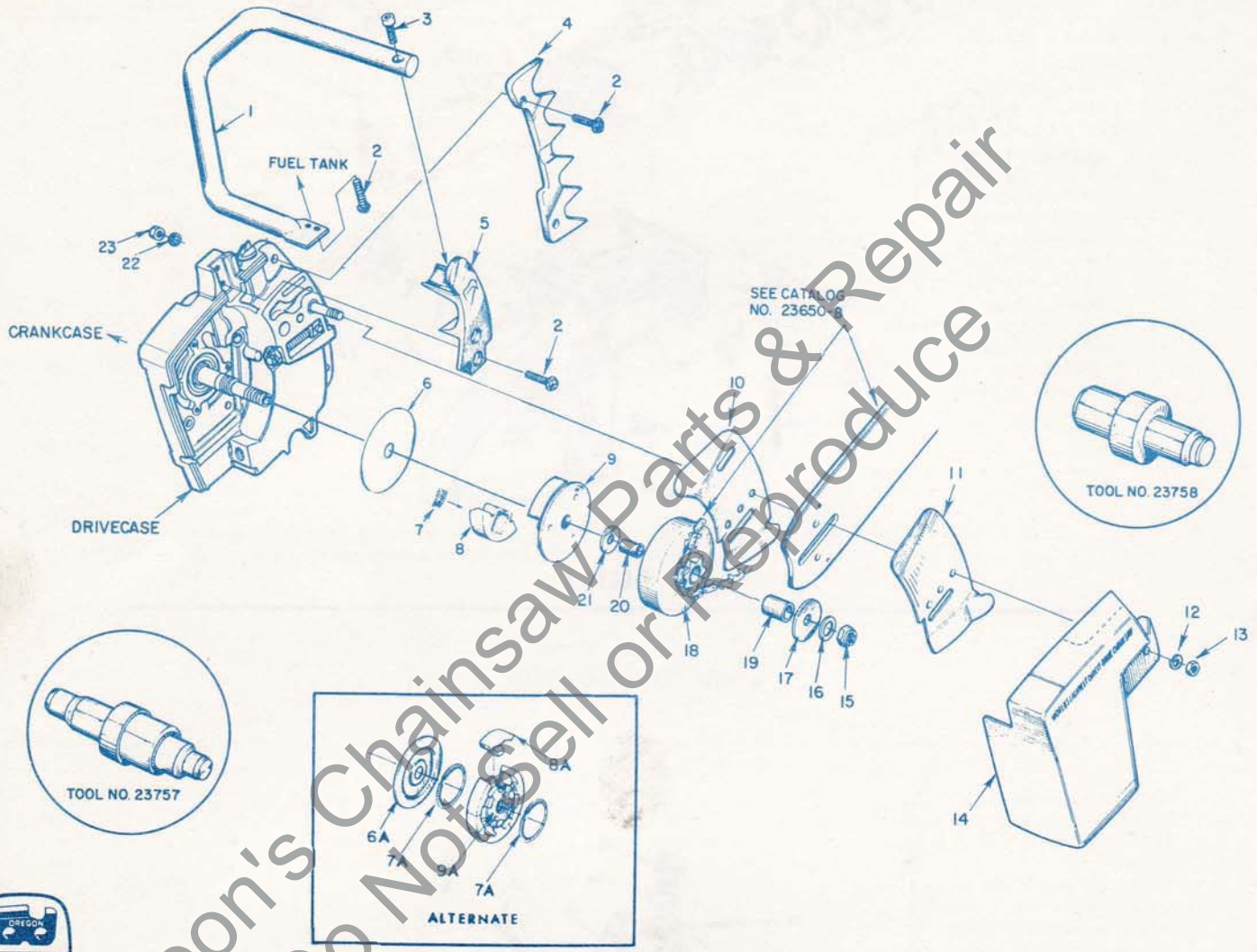


FIGURE 5



HOMELITE SUPER XL-67 CHAIN SAW

No.	Description	Part No.	Qty.
1	HANDLE BAR - flush cut	120216	1
2	SCREW - hex, 1/2-24 x 3/4	80867	6
3	SCREW - socket	80428	2
4	BUMPER - spiked	58961	1
5	BRACKET - handle bar	59651-2	1
6	COVER - clutch	63051-1	1
6A	COVER - clutch	†58751-1	1
7	SPRING - clutch	63034	3
7A	SPRING - clutch	†55123-C	2
8	SHOE - clutch	63052	3
8A	SHOE - clutch	†58928-1	6
9	PLATE - back (clutch)	63053	1
9A	SPIDER - clutch	†58927-1	1
10	PLATE - inner guide bar	58781	1
11	PLATE - outer guide bar	58782	1
12	WASHER - flat, 5/16	84056	2
13	NUT - hex, 5/16-18	81196	2

No.	Description	Part No.	Qty.
14	COVER - drivecase	58750-2	1
15	NUT - lock, 3/8-24	81192	1
16	WASHER - flat, 3/8	84010-1	1
17	WASHER - thrust (outer)	58926	1
18	SPROCKET & DRUM		
	optional - 7 tooth, 3/8" pitch	A-59552	1
19	Includes: BEARING - needle	72311-S	1
20	RACE - inner	55584	1
21	WASHER - thrust (inner)	58833	1
22	WASHER - lock, #12	83056	2
23	NUT - 12-24	81068	2

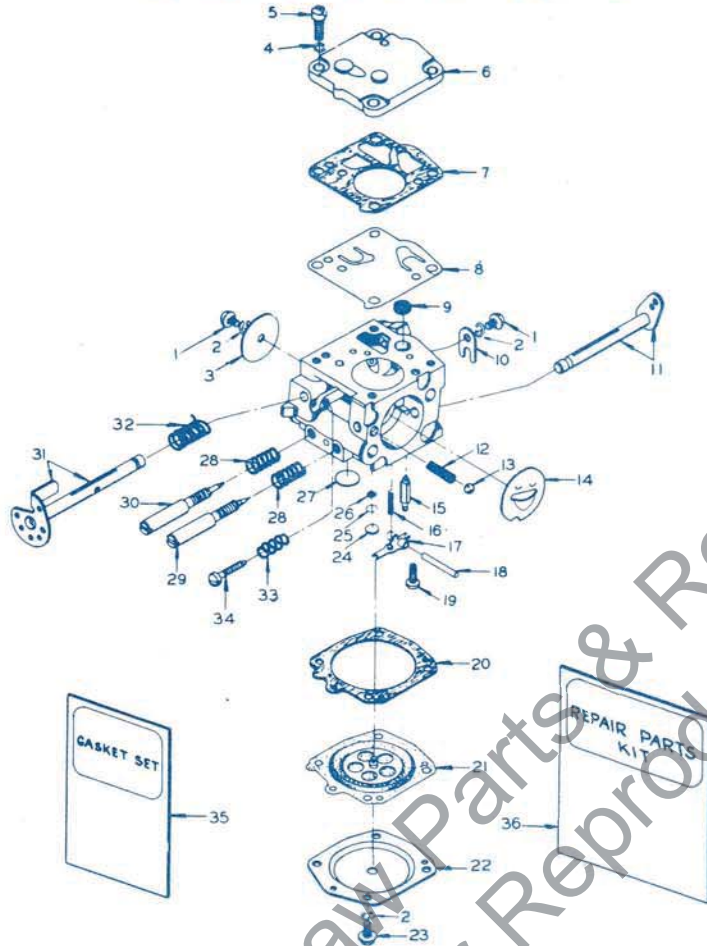
† Alternate clutch assembly used in some units, these individual parts are not interchangeable with Index #6, #7, #8, or #9. Complete assembly #6 thru #9 can replace #6A thru #9A.

SPECIAL TOOLS (available on order)

Description	Part No.
COLLAR - bearing ass'y.	22820-1
PLIERS - ret'g. ring (piston pin)	22828
SLEEVE - bearing & shaft ass'y.	25136
JACKSCREW	A-23137
WRENCH - socket (rod screws)	23528
PLUG - needle brg. (rod)	23756
PLUG - needle brg. (case)	23757
PLUG - seal ass'y. (case)	23758
SLEEVE - seal (crankcase)	23759
PULLER - rotor	A-23960
SLEEVE - seal (crankcase)	23800

Description	Part No.
PLUG - needle brg. (sprocket)	23819
WRENCH - insert	A-23841
SLEEVE - seal (drivecase)	23843
SLEEVE - seal (drivecase)	23844
PLUG - seal (drivecase)	23845
ANVIL - shaft ass'y.	23846
SLEEVE - shaft & bearing	23884-A
WRENCH - spanner (clutch)	A-23934
WRENCH - combination (supplied)	A-23937-A

HOMELITE XL CHAIN SAWS



Model - Tillotson HS-4D A59504C

Service replacement for HS-1A, HS-4A, HS-4B, HS-5A, HS-5B, HS-5C models.
All new parts listed are interchangeable with original parts when installed as noted.

Index No.	Part No.	Description	Qty. Req'd.	Index No.	Part No.	Description	Qty. Req'd.
1	*80264	SCREW - 4-40 x 3/16	2	19	*58992	SCREW - 4-40 x 5/16	1
2	83008-1	WASHER - #4	6	20	58978	GASKET - diaphragm	1
3	25050	THROTTLE SHUTTER	1	21	*58988	DIAPHRAGM - main	1
4	83024	WASHER - #6	4	22	58979	COVER - diaphragm	1
5	80275	SCREW - 6-32 x 3/8	4	23	80591	SCREW - 4-40 x 1/4	4
6	58975	COVER - pump	1	24	*58994	PLUG - Welch 3/16	1
7	58981	GASKET - fuel pump	1	25	57819	RING - retaining	1
8	*58980	DIAPHRAGM - fuel pump	1	26	59500	SCREEN - channel	1
9	*58974	SCREEN	1	27	*58991	PLUG - Welch 11/32	1
10	58982	CLIP - throttle shaft	1	28	*73075	SPRING - adjusting screw	2
11	58990	CHOKE SHAFT & LEVER	1	29	*58986	NEEDLE - main adjusting	1
12	73264	SPRING - choke friction	1	30	*58985	NEEDLE - idle adjusting	1
13	25527	BALL - choke friction	1	31	58989	THROTTLE SHAFT & LEVER	1
14	58984	SHUTTER - choke	1	32	*59460	SPRING - throttle return	1
15	*59717	† NEEDLE - inlet (See Note 1)	1	33	*58973	§ SPRING - idle speed (See Note 2)	1
16	*55759	SPRING - inlet tension	1	34	*58993	§ SCREW - idle stop (see Note 2)	1
17	*59716	† LEVER - inlet control (See Note 1)	1	35	*58971	GASKET SET	1
18	*58977	PIN - fulcrum	1	36	58972	REPAIR KIT	1

* Included in Repair Kit

† Note 1: New type (slotted) needle and lever must be installed together when replacing original type.

§ Note 2: Packaged with service replacement carburetor, use if required.

PART No. 120656



TERRY INDUSTRIES
A DIVISION OF **textron** CANADA LIMITED

180 Labrosse Ave., Pointe Claire, Que.

PRINTED IN CANADA

6-67