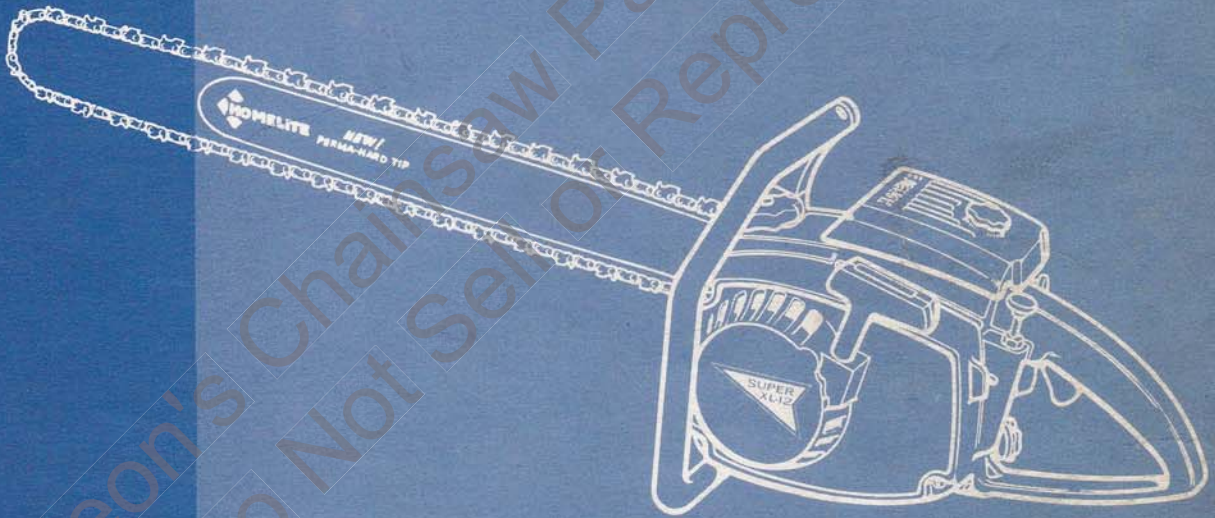


HOMELITE

Chain Saw



**SUPER
XL-12**

PARTS LIST

HOMELITE CHAIN SAW



*coil retaining clip
58873*

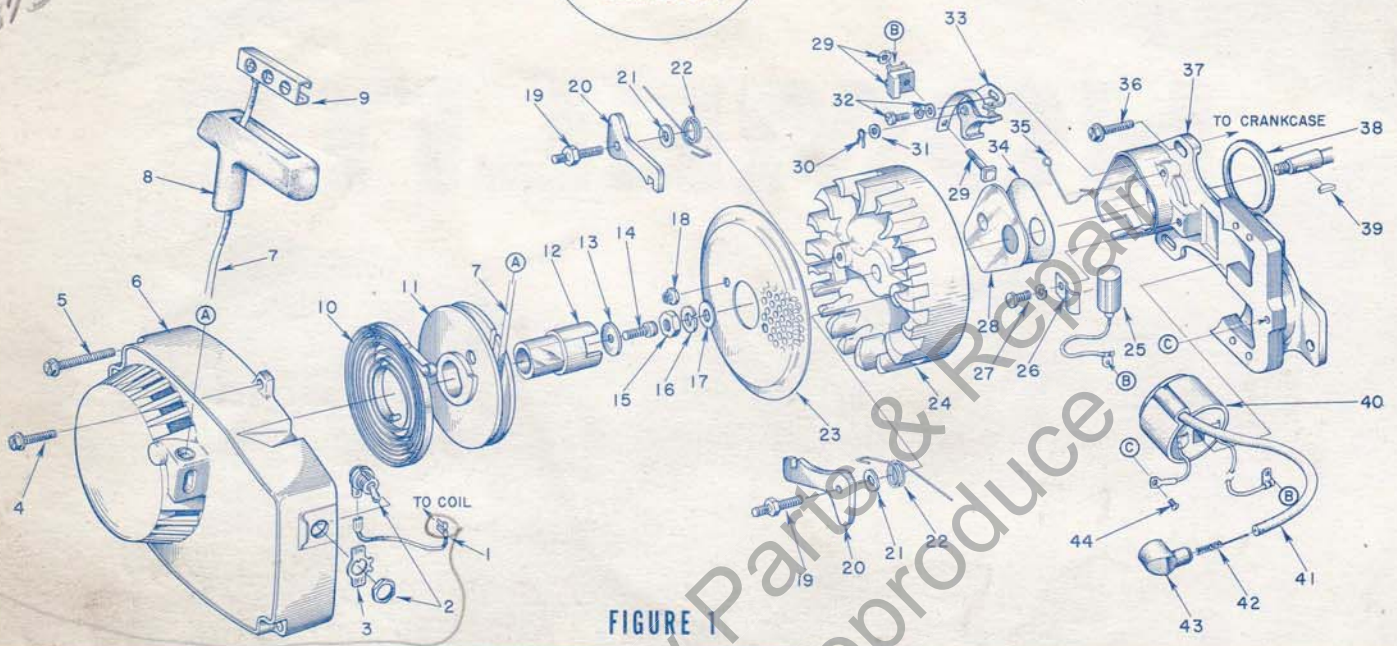


FIGURE 1

Index No.	Part No.	Description	No. Req'd	Index No.	Part No.	Description	No. Req'd
1	*A-59031	LEAD - ground w/terminals	1	22	58758	SPRING - starter finger	2
2	A-57650-3	SWITCH - w/nut	1	23	58765	SCREEN - starter	1
3	72085-A	PLATE - "ON - OFF"	1	24	58809	ROTOR - magneto	1
4	80676	SCREW - hex hd., 12-24 x 5/8	1	25	58817	CONDENSER	1
5	58963	SCREW - hex hd., 12-24 x 1-11/16	3	26	59622	CLAMP - condenser	1
6	A-59562	FAN HOUSING	1	27	30261	SCREW GROUP - condenser	1
		Includes		28	58811	COVER - breaker box	1
	59313	BUSHING - rope	1	29	A-58934	TERMINAL BLOCK GROUP	1
7	58806	ROPE - starter	1	30	28008	CLIP - point pivot post	1
8	58915	GRIP - rope	1	31	28028	WASHER - point	1 or 2
9	58847	INSERT	1	32	76421	SCREW GROUP - points	1
10	58764	SPRING - recoil	1	33	A-58914	POINT SET - w/felt	1
11	58759	PULLEY - starter	1	34	58810	GASKET - cover	1
12	58760	CUP - starter	1	35	76413	SPRING - cover	1
13	58763	WASHER - retaining	1	36	80899	SCREW - hex hd., 12-24 x 9/16	3
14	80492	SCREW - socket hd., 10-32 x 1/2	1	37	58875	PLATE AND CORE	1
15	81117	NUT - hex, 5/16-24	1	38	59538	GASKET	1
16	83002	WASHER - lock, 5/16	1	39	75078	KEY - rotor	1
17	84056	WASHER - flat, 5/16	1	40	58874	COIL	1
18	81109	NUT - hex lock, 10-32	2	41	58966	LEAD - hi-tension	1
19	58757	STUD - shoulder	2	42	58919	SPRING - connector	1
20	58756	FINGER - starter	2	43	58918	BOOT - spark plug	1
21	58851	WASHER	2	44	58872	SCREW - coil ground	1

*3" of #20 insulated, stranded wire with one straight (1/4") snap-on terminal, and one flag (3/16") snap-on terminal.
#8-1/2" 7MM (O.D.) hi-tension cable.

SPECIAL TOOLS (available on order)

Part No.	Description	Part No.	Description
22808	COMBINATION WRENCH	#23758	SEAL ASSEMBLY - drive and crank cases
22828	PLIERS - piston snap ring	#23759	SLEEVE - crankshaft assembly
23528	WRENCH - socket screw (conn. rod)	#23760	BEARING ASSEMBLY AND DISASSEMBLY - sprocket drum
#23756	BEARING ASSEMBLY AND DISASSEMBLY - conn. rod	#A-23761-A	REMOVER AND LOCKING BRACKET - rotor
#23757	BEARING ASSEMBLY AND DISASSEMBLY - drive and crank cases	A-23696	REMOVER - threaded spider
23819	PLUG - needle bearing (sprocket)	23800	TOOL - seal assembly (crank and drive cases)

HOMELITE ^{SUPER} XL12 CHAIN SAW

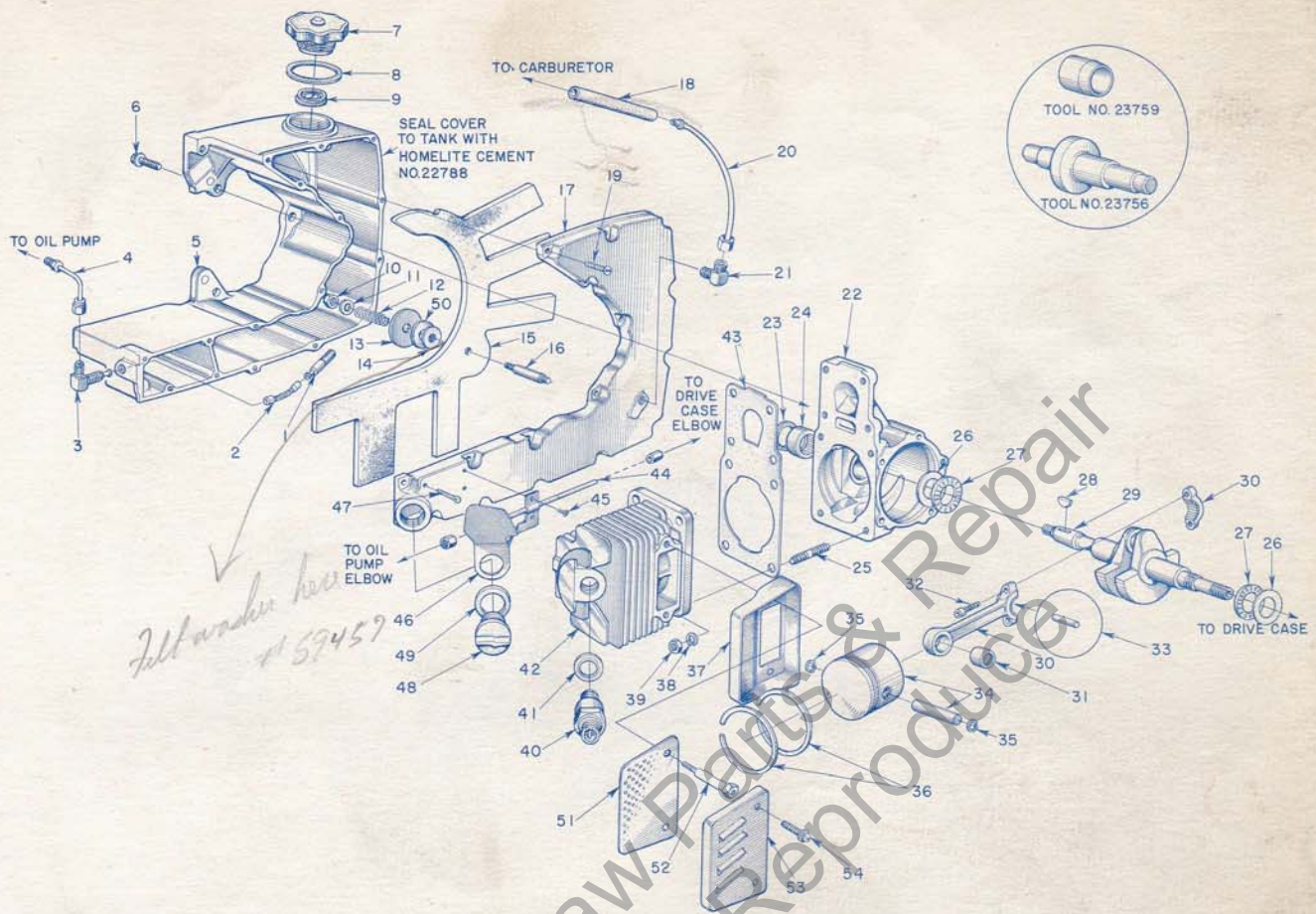


FIGURE 2

Index No.	Part No.	Description	No. Req'd	Index No.	Part No.	Description	No. Req'd
1	A-59009	OIL FINDER	1	29	58439	CRANKSHAFT	1
2	59000	SLEEVE - flexible	1	30	A-58769	CONNECTING ROD	1
3	A-59010	CHECK VALVE - 90°	1			Includes	
4	A-59014	OIL LINE - tank to pump	1	31	58724	BEARING	1
5	58732	TANK - fuel and oil	1	32	80889	SCREW - socket hd., 8-36 x 1/2	2
6	80867	SCREW - hex hd., 12-24 x 3/4	5	33	A-58864	ROLLERS - set (28)	1
7	A-58868-A A59956	CAP - fuel filler	1	34	A-59468	PISTON AND PIN	1
		Includes				Includes	
8	58957	GASKET	1	35	75120	RING - retaining	2
9	56865	VALVE	1	36	59436	RING - piston	2
10	81109	NUT - hex lock, 10-32	1	37	A-59049	BODY - muffler	1
11	84003-1	WASHER - flat, #10	1	38	83009	WASHER - lock, 1/4	4
12	58867	SPRING - compression	1	39	81065-2	NUT - hex, 1/4-28	4
13	58866	WASHER - wick	1	40	*58917-S	SPARK PLUG	1
14	58865	GASKET	1			Includes	
15	58862	WICK - fuel pick-up	1	41	25038	GASKET	1
16	58519	STUD - wick	1	42	58706-A1	CYLINDER	1
17	58739	COVER - tank	1	43	58513	GASKET	1
18	58997	FUEL LINE - flexible	1	44	A-59012	OIL LINE - pump to drivecase	1
19	80513	SCREW - rd. hd., #6 x 1/2	16	45	80658	SCREW - pan hd., 4-40 x 3/16	2
20	A-59007	FUEL LINE	1	46	59559	SHIELD	1
21	58995	ELBOW - fuel line	1	47	86301	COTTER PIN	1
22	A-58794	CRANK CASE	1	48	A-56580-1	CAP - oil filler	1
		Includes				Includes	
23	58688-A	SEAL	1	49	56607	GASKET	1
24	58956	BEARING	1	50	59457	WASHER - felt	1
25	55871	STUD	4	51	59050	BAFFLE	1
26	58725	RACE - thrust bearing	2	52	59065A	STUD	2
27	58726	BEARING - needle thrust	2	53	59051 AL3246	CAP	1
28	75078	KEY - rotor	1	54	80825	SCREW - 10-32 x 9/16	2

*ACCESSORY: #59558-S SPARK PLUG - platinum electrode

ALWAYS FURNISH SAW MODEL AND SERIAL NUMBER WHEN ORDERING PARTS.

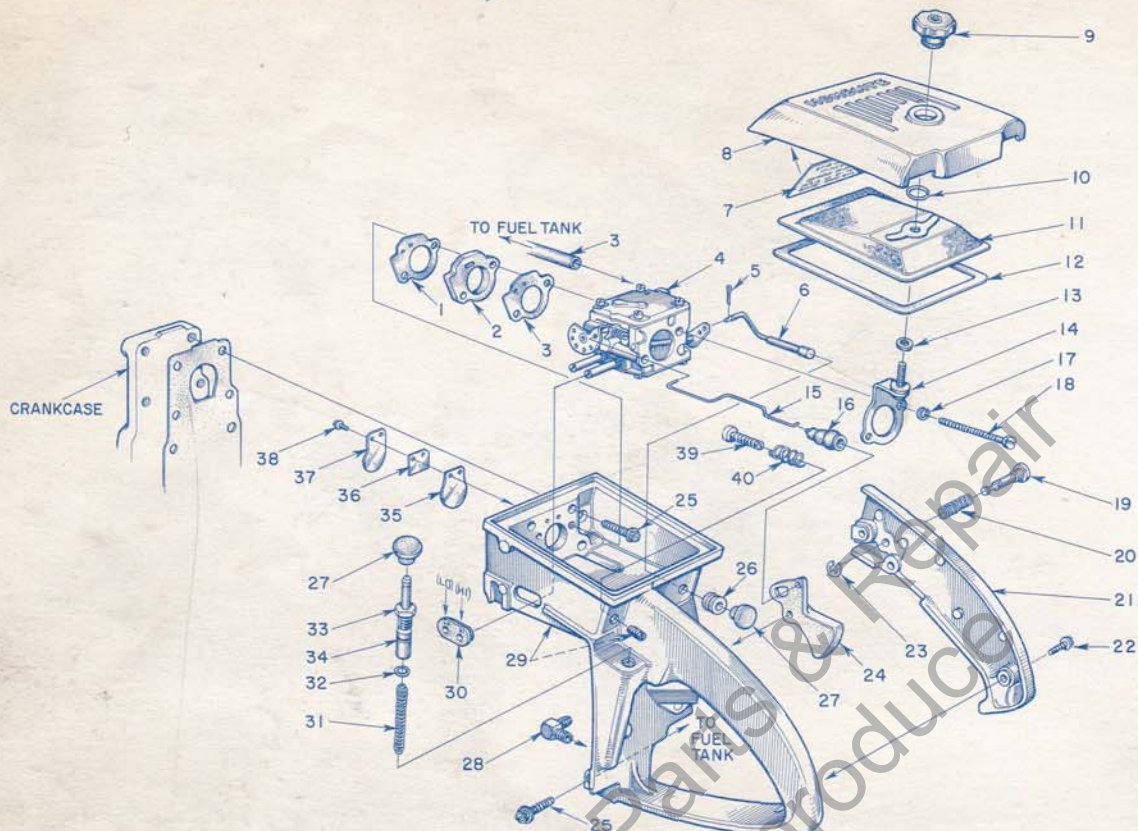


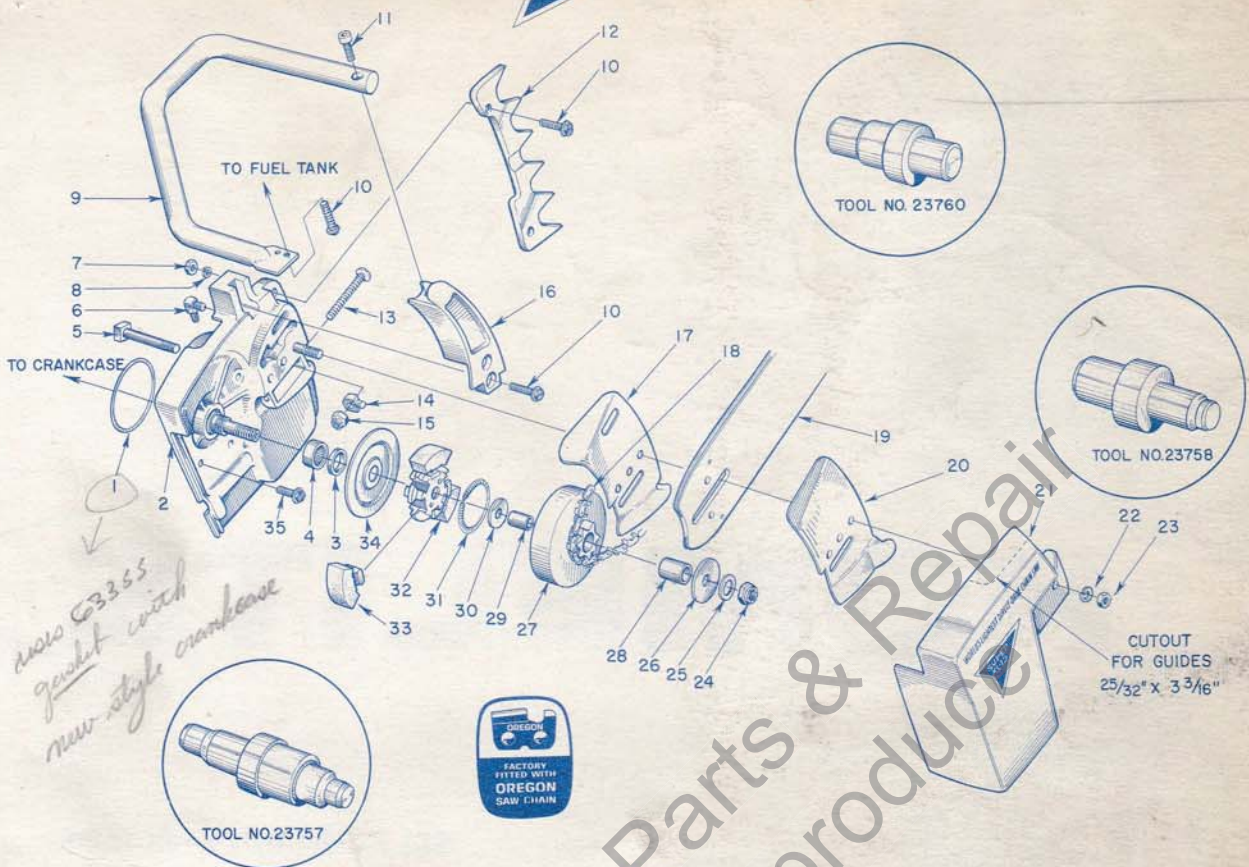
FIGURE 3

Index No.	Part No.	Description	No. Req'd	Index No.	Part No.	Description	No. Req'd
1	58537-A	GASKET - carburetor.	2	22	59064	BUSHING (nylon) - pin	1
2	58780	SPACER - carburetor.	1	23	80560	SCREW - pan hd., 8-32 x 1/2.	2
3	58997	FUEL LINE - flexible.	1	24	58409	RING - retaining	1
4	*A-58767	CARBURETOR - see Note 1.	1	25	58859	THROTTLE	1
	58971	GASKET SET	1	26	80891	SCREW - hex hd., 12-24 x 7/8	5
	58972	REPAIR PARTS KIT	1	27	58362	GROMMET	1
5	86324	COTTER PIN	1	28	57289-1	BUTTON	2
6	A-58826	ROD - choke.	1	29	A-59011	CHECK VALVE - elbow.	1
7	59024	INSTRUCTIONS	1	29	A-59507	HOUSING & HANDLE	1
8	58773	COVER - air filter	1			Includes	
9	58882	NUT - cover.	1		71505	PLUG - screw, see Note 2.	1
10	58319-A	RING - retaining.	1	30	59058	GROMMET - "LO-HI".	1
11	58774-1	ELEMENT - air filter	1	31	59293	SPRING - plunger	1
12	58884	GASKET - filter.	1	32	59074	"O" RING - plunger shaft	1
13	58392-1	GASKET - mounting stud	1	33	A-57834-8	PLUNGER - oil pump	1
14	A-58818-A	BRACKET - mounting.	1			Includes	
15	58836	ROD - throttle.	1	34	74388	"O" RING - plunger	1
16	58348	BOOT - throttle rod.	1	35	58775	REED	1
17	83046	WASHER - lock, #10	2	36	59053	BACK-UP - reed	1
18	80481	SCREW - hex hd., 10-32 x 2-1/4.	2	37	59421	STOP - reed.	1
19	58924	PIN - throttle lock.	1	38	80658	SCREW - pan hd., 4-40 x 3/16	2
20	58405	SPRING - lock.	1	39	59310	SCREW - idle	1
21	A-59213	COVER - handle.	1	40	59319	SPRING - screw.	1
		Includes					

*Refer to Carburetor Parts List #23766.
 -Included in Repair Parts Kit #58972.

NOTE 1 - Service replacement carburetor #A-58767 supplied with idle stop screw and spring; remove these parts.
 NOTE 2 - Remove #71505 Screw PLUG supplied with service replacement handle.

HOMELITE CHAIN SAW



*new 63355
gasket with
new style crankcase*



FIGURE 4

Index No.	Part No.	Description	No. Req'd	Index No.	Part No.	Description	No. Req'd
1	58785	"O" RING	1	HT-1250	12", .050 gauge		
2	A-58925	DRIVE CASE	1	GW-1650	16", .050 gauge		
3	58688-A	SEAL	1	GW-2050	20", .050 gauge		
4	58956	BEARING - needle	1	GW-2450	24", .050 gauge		
5	58753	BOLT - guide bar	2	20	58782	PLATE - outer guide bar	1
6	56707	ELBOW - oil line	1	21	58750-2	COVER - drive case	1
7	81068	NUT - hex, 12-24	2	22	83002	WASHER - lock, 5/16	2
8	83056	WASHER - lock #12	2	23	81196	NUT - hex, 5/16-18	2
9	A-58793	HANDLE BAR	1	24	81192	NUT - hex, 3/8-24	1
10	80867	SCREW - hex hd., 12-24 x 3/4	6	25	84010	WASHER - flat, 3/8	1
11	80428	SCREW - socket hd., 1/4-20 x 1	1	26	58926	WASHER - thrust (outer)	1
12	*58961	BUMPER PLATE	1	27	A-59552	SPROCKET & DRUM - 7 tooth, 3/8" pitch (standard)	1
13	80885	SCREW - pin, 1/4-20 x 2	1		A-59555	SPROCKET & DRUM - 7 tooth, .404 pitch (optional)	1
14	58783	PIN - bar adjusting	1			Includes	
15	81108	NUT - lock, 1/4-20	1	28	72311	BEARING - needle	1
16	59246	BRACKET - handle bar	1	29	55584	RACE - inner	1
17	58781	PLATE - inner guide bar	1	30	58833	WASHER - thrust (inner)	1
18	✓	CHAIN - .050 gauge, 3/8" pitch	1	31	55123-C	SPRING - clutch	2
	A-52961	12" loop, 48 links		32	58927-1	SPIDER - clutch	1
	A-52962	16" loop, 59 links		33	58928	SHOE - clutch	3
	A-52963	20" loop, 69 links		34	58751	COVER - clutch	1
	A-52964	24" loop, 81 links		35	80899	SCREW - hex hd., 12-24 x 9/16	5
19	✓	14" Bow Guide loop					
		GUIDE BAR	1				

*ACCESSORY - available on order.
/Sizes supplied as ordered. Refer to catalog #23650 for chain and bar accessories.

ACCESSORIES (available on order)

- #A-52971-A BOW GUIDE - includes #59194 CHAIN GUARD, #59324 SPUR with parts listed below. Use #A-52964 CHAIN.
- #A-52972-A UTILITY GUIDE - includes #59103 CHAIN GUARD, #59343 SPUR with parts listed below. Use #A-52963 CHAIN.
- #A-52994-A CLEARING GUIDE - includes #59103 CHAIN GUARD, #59343 SPUR with parts listed below. Use #A-52964 CHAIN.
- #A-53024-A BOW GUIDE, 14", .063 - includes #59194 CHAIN GUARD, #59324 SPUR with parts listed below. Use #A-53025 CHAIN.

GUIDE ATTACHMENT PARTS:

#75729	SPACER - spur	1	#80676	SCREW - hex hd., 12-24 x 5/8	2
#80546	SCREW - hex hd., 5/16-24 x 1-1/4	2	#83056	WASHER - lock, #12	2
#81112	NUT - hex 5/16	2	#81068	NUT - hex, #12	2

ALWAYS FURNISH SAW MODEL AND SERIAL NUMBER WHEN ORDERING PARTS.

**You'll
SPEED WORK
and make
MORE MONEY
with...**

HOMELITE

SELF-PRIMING PUMPS



DEPENDABLE GENERATORS



POWERFUL ONE-MAN CHAIN SAWS



ONE-MAN CONCRETE VIBRATORS



ELECTRIC BUILDER'S HAMMERS



Printed in United States of America

Part No. 23817

HOMELITE

A **textron** DIVISION

PORT CHESTER, N. Y.

Illustrated in **1:11 SPECTIVE** and
prepared by **PURNELL COMPANY, INC.**
Boston, Mass.