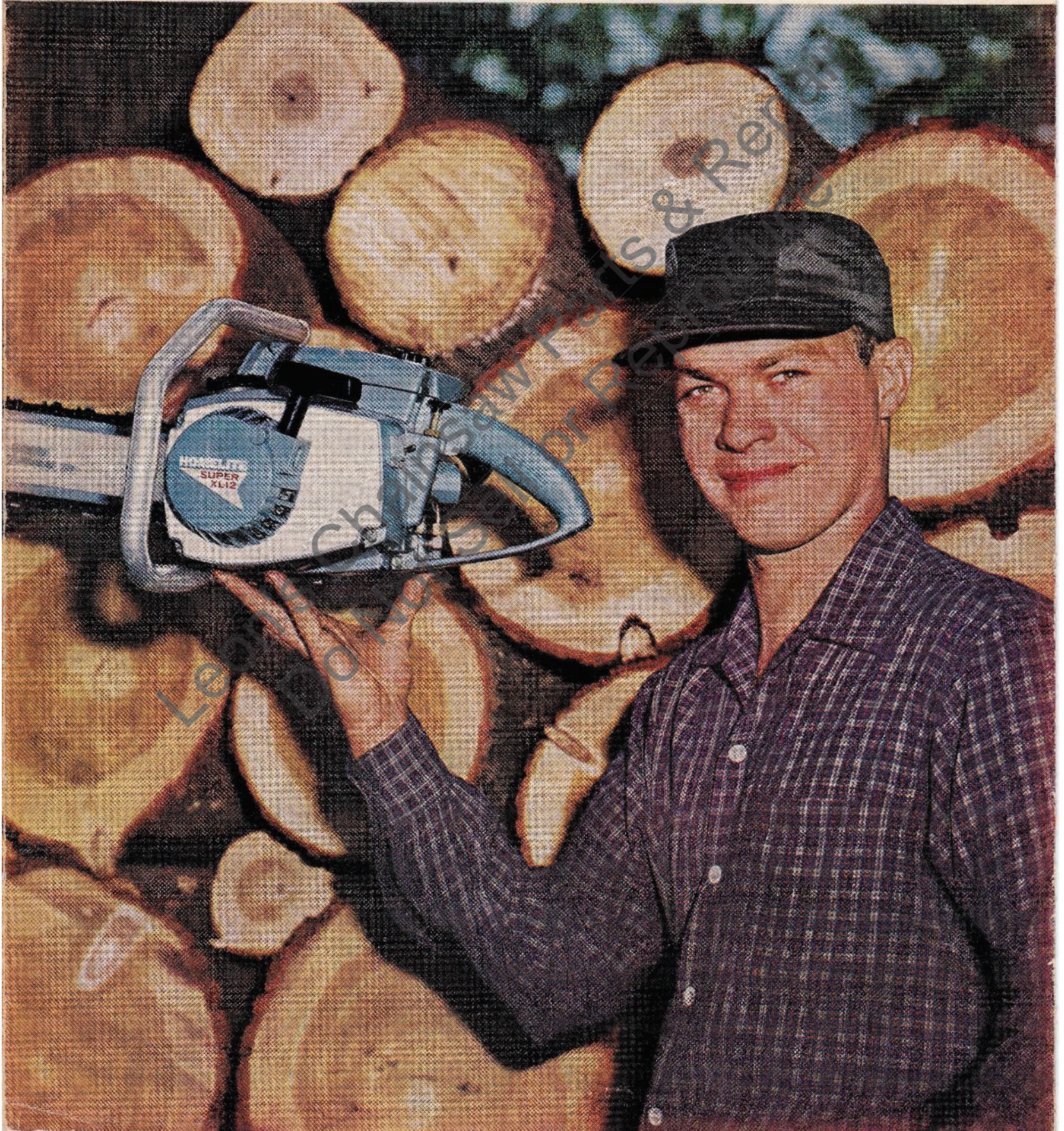


World's Lightest Direct Drive Chain Saw  
with Super Power

# **NEW HOMELITE SUPER XL-12**

*New professional features and performance for any cutting job*





Power and speed for any type of woodcutting

# NEW HOMELITE SUPER XL-12



**PROFESSIONAL** cutting by loggers and pulp cutters is more profitable because the extreme light weight means you can cut longer with less fatigue, make more money.



**LANDSCAPING** is simpler because flush cut handle lets you cut level with the ground. You can remove dead or unwanted trees and eliminate stumps to leave the ground neat and clean.



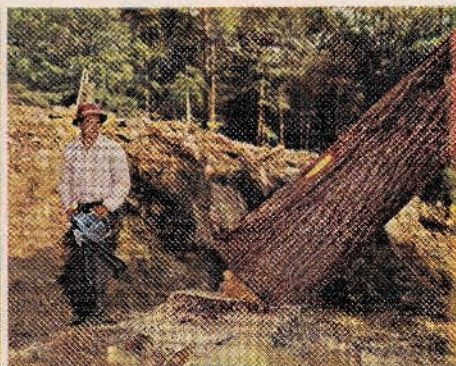
**RIGHT-OF-WAY** clearing moves faster for road-building crews, utilities or park departments. Light weight lets work move faster, rugged construction handles any type of cutting.



**CAMPING** is more fun, because the Super XL-12 can clear a campsite so quickly and easily. Carry it to the campsite without tiring and use it to cut firewood, cut lumber for shelters and cabins.



**CASH CROP** cutting can bring in extra dollars for farmers and woodlot owners. The fast direct drive of the Super XL-12 lets you turn even a few hours cutting into profits.



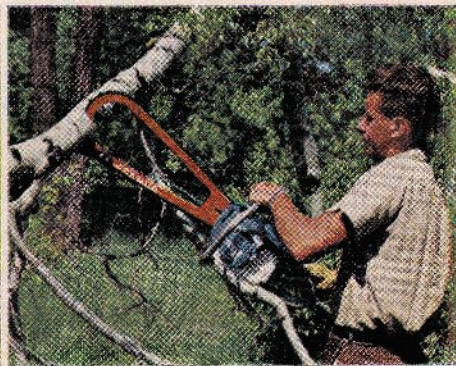
**CONSTRUCTION CLEARING** is faster with the Super XL-12. Plenty of power for felling either hard or soft woods. The new Super XL-12 will quickly pay for itself whether you're clearing for building or for firelanes.



**PRUNING AND TRIMMING** for fruit growers and tree surgeons are so much easier because the Super XL-12 will zip through 4" limbs in 2 seconds. Orchards and shade trees are easier to care for because the Super XL-12 is so light you can carry it right up into the tree.



**FARM MAINTENANCE** is simplified for taking care of rough cuts of lumber for out-buildings, fencing or shoring. No other farm tool costs so little and does so much useful work as the Homelite Super XL-12 chain saw.



**STORM DAMAGE** is quickly cleaned up by the Super XL-12. Damaged and diseased trees can be removed efficiently with your Super XL-12 to prevent further damage or spread of disease. You can fell, limb and cut trees into easily removed sections in minutes with the fast-cutting Super XL-12.





Cut 'em down...cut 'em up...cut for cash...cut to clear or repair storm damage...cut for fun...the new Homelite Super XL-12 with super power does more work with less effort than any other chain saw



# Cuts 15" softwood in 15 seconds 15" hardwood in 20 seconds



Here is the first lightweight chain saw to give you all the famous Homelite professional features in a direct drive chain saw with *super* power . . . the new Homelite Super XL-12.

New engine features give you more power than ever before in a lightweight chain saw that weighs only 12½ pounds. New muffler design helps smother noise, meets all professional specifications.

You get all the professional features of the famous Homelite short-stroke engine design, too. All-position diaphragm carburetor lets you cut up, down, upside down. Grouped controls, "hot-spark" ignition and automatic clutch make the Super XL-12 easier to start, easier to run, easier to control than any other chain saw. Husky, counterbalanced crankshaft eliminates vibration, reduces operator fatigue. Rugged die-cast construction stands up under the roughest day-after-day cutting.

The narrow, compact design is perfectly balanced. Flushcut handle lets you cut level with the ground! Full range of straight blades from 12" to 24", plus 14" plunge-cut bow and clearing bar.

For professional or amateur, for full-time or part-time cutting, for profit or for fun, the new Homelite Super XL-12 represents a new high in performance, speed and durability in a lightweight, direct drive chain saw.

Have a free demonstration today!

\*Less bar and chain. Saw complete with bar and chain, weighs as little as 15 pounds.





**Fells trees up to  
4 feet in diameter**

**ZIPS THROUGH 10" OAK IN 10 SECONDS**

**Weights only  
12½ pounds\***

**HOMELITE**

**SUPER  
XL-12**

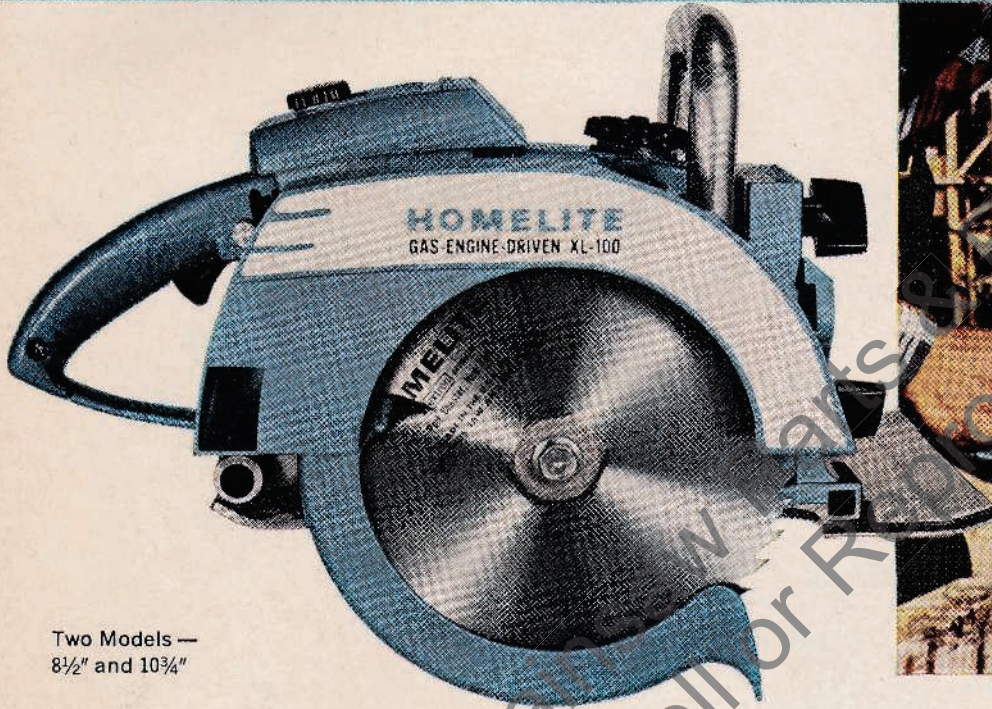




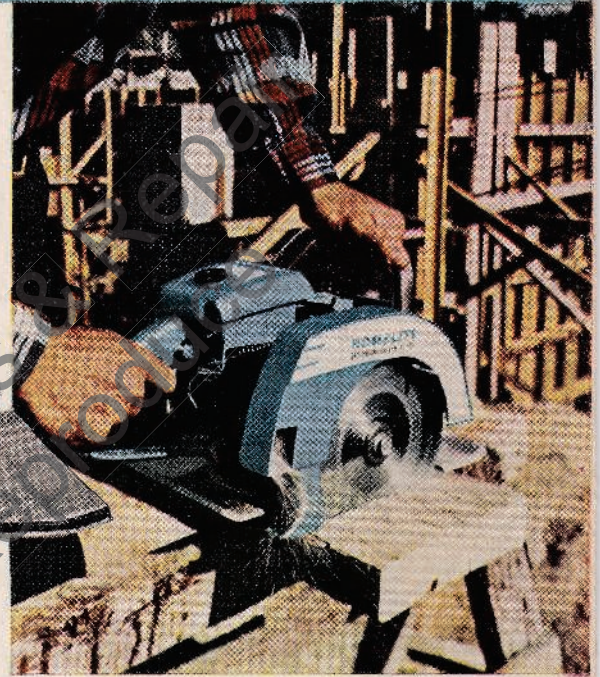
# World's Most Powerful Circular Saw

## NEW HOMELITE XL-100

### Gas-Engine-Driven Circular Saw



Two Models —  
8½" and 10¾"



The new Homelite gas-engine-driven circular saw gives you advantages never before available in portable hand tools.

Available in 8½" and 10¾" sizes, they completely eliminate the need for external power supply. The powerful Homelite short-stroke engine gives you instant power anywhere, anytime. No need to string cable, set up generators. You start cutting the minute you get the easy-to-carry, lightweight Homelite to the job.

And you get power and cutting speed that cuts a 2 x 10 in one second, a 3 x 12 in two seconds! And

the smooth power of the Homelite is so easy to handle you can do heavy-duty cutting all day with less effort.

You run this saw in complete safety from electrical shock because you don't use electric power. No need to build special platforms on damp ground or over water.

Blades for the new Homelite saw include wood, metal, masonry, plastics and wallboard. See and try the features you get in this new Homelite power hand saw... have a free demonstration at your dealer's today!

**HOMELITE** **A textron**  
DIVISION  
RIVERDALE AVENUE, PORT CHESTER, NEW YORK