

HOMELITE CHAIN SAW

MODEL IDENTIFICATION

WIZ (1959) - Initial Serial No. 886888

WIZ-A (1960) - Initial Serial No. 1052728 and all units with an "A" preceding the serial number.

WIZ-B (1961 - 62) - Initial Serial No. 1191982 (preceded by "B")

Super Wiz (1962) - Initial Serial No. 1287796 (no governor)

Super Wiz (modified) - Initial Serial No. ~~1309088~~ (with governor)
1309088 (with governor)



WIZ SERIES

PARTS LIST

FIGURE 1

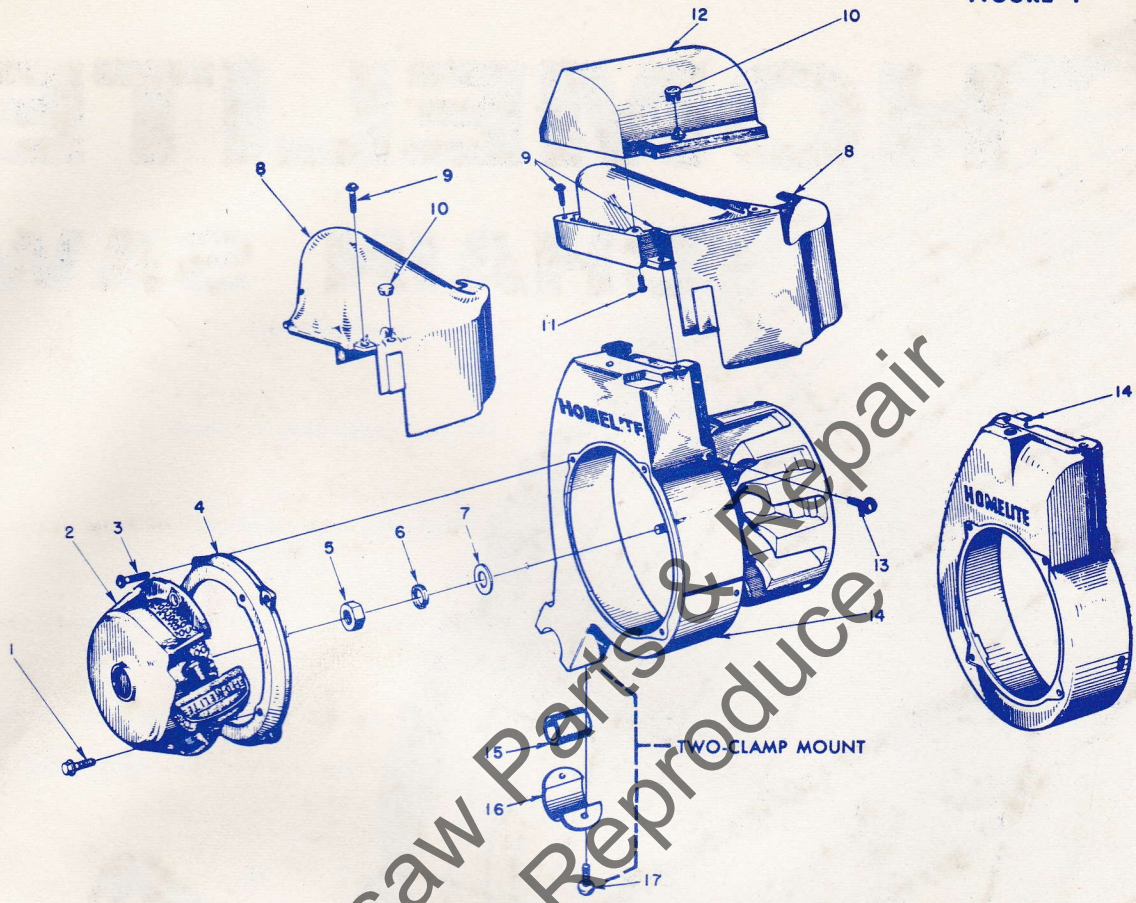
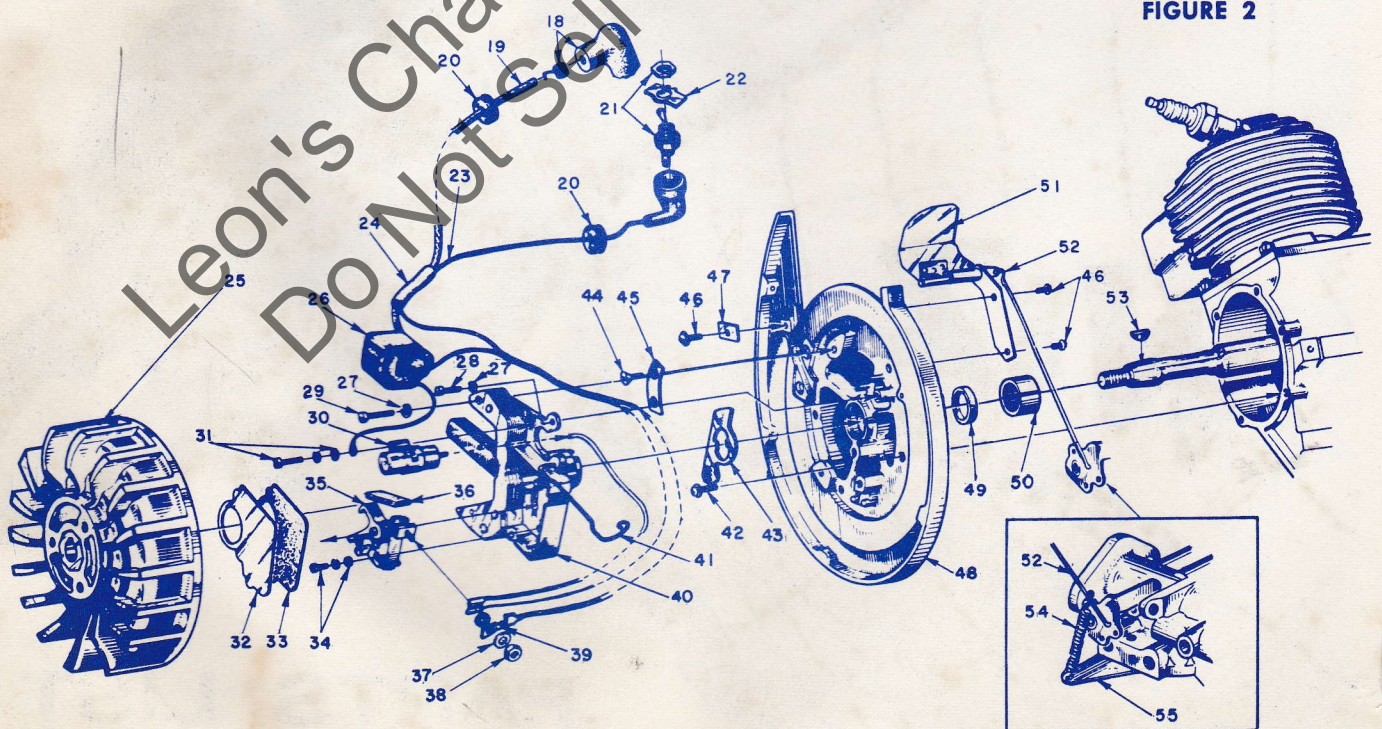


FIGURE 2



Circled asterisk * denotes a part that may require adaptation for use in older saws; see notes.
Black circled numerals () refer to note numbers on page 8.

No.	Description	Part No.	Wiz	Wiz A	Wiz B	Super Wiz	Qty.
1	SCREW - hex hd., 1/4 - 20 x 1/2	80681	*	*	*	*	4
2	STARTER ASSEMBLY (1)	A-56540-6	*	*	*	*	1
		A-56540-1	*	*	*	*	1
		A-56540	*	*	*	*	1
3	SCREW - pan hd., 10 - 32 x 9/16	80576	*	*	*	*	4
4	ADAPTER, starter	56531	*	*	*	*	1
5	NUT - hex, jam 7/16 - 20	81110	*	*	*	*	1
	3/8 - 24	81124	*	*	*	*	1
	5/16 - 24	81117	*	*	*	*	1
6	WASHER - lock, 7/16	83019	*	*	*	*	1
	3/8	83018	*	*	*	*	1
	5/16	83002	*	*	*	*	1
7	WASHER - flat, 7/16	84055	*	*	*	*	1
	aluminum 3/8	84070	*	*	*	*	1
	5/16	84067	*	*	*	*	1
8	SHIELD - cylinder	56967-2	*	*	*	*	1
		55015-2	*	*	*	*	1
		55015-B	*	*	*	*	1
9	SCREW - pan hd., 8 - 32 x 1/2	80560	*	*	*	*	2
10	PLUG - button	32814	*	*	*	*	1
11	SCREW - self tap, #6 x 1/2	80513	*	*	*	*	4
12	CAP - cylinder shield	56968	*	*	*	*	1
13	SCREW - pan hd., 8 - 32 x 3/8 (3)	80577	*	*	*	*	3
14	SHROUD - air (fan housing)	A-58407	*	*	*	*	1
		A-56006-2	*	*	*	*	1
		AA-55208	*	*	*	*	1
15	GUSHION - handle	56281	*	*	*	*	1
16	CLAMP - handle, fan housing	56282-A	*	*	*	*	1
17	SCREW - rd. hd., 12 - 24 x 1/2 (4)	80821	*	*	*	*	1
18	TERMINAL - "Sparky"	A-55373	*	*	*	*	1
19	LEAD - high tension	55235-A	*	*	*	*	1
20	GROMMET	60929	*	*	*	*	2
21	SWITCH - toggle w/#22 w/out #22	A-57716	*	*	*	*	1
		A-57650-2	*	*	*	*	1
22	PLATE - "on-off"	55879	*	*	*	*	1
23	LEAD - ground	A-57738	*	*	*	*	1
		55990	*	*	*	*	1
24	SLEEVE - insulating	55290	*	*	*	*	1
25	ROTOR	57579-A	*	*	*	*	1
		55994-A	*	*	*	*	1
		55994-A	*	*	*	*	1
		56214-A	*	*	*	*	1
26	COIL	55986-A	*	*	*	*	1
27	WASHER - lock, #10	83046	*	*	*	*	3
28	SCREW - fil. hd., 10 - 24 x 1/2	80595	*	*	*	*	1

No.	Description	Part No.	Wiz	Wiz A	Wiz B	Super Wiz	Qty.
29	SCREW - fil. hd., 10 - 24 x 7/8	80660	*	*	*	*	2
30	CONDENSER - w/terminal	55987	*	*	*	*	1
31	SCREW GROUP - condenser	57750	*	*	*	*	1
	SCREW - condenser	55988	*	*	*	*	1
	Use: WASHER - lock, #8	83060	*	*	*	*	1
	WASHER - flat, #8	84048	*	*	*	*	1
32	COVER - dust	55979	*	*	*	*	1
33	GASKET - dust cover (2)	55975-2	*	*	*	*	1
		55978	*	*	*	*	1
		55978-1	*	*	*	*	1
34	SCREW GROUP - point	57749	*	*	*	*	1
	SCREW - point	55985	*	*	*	*	1
	Use: WASHER - lock, #8	83060	*	*	*	*	1
	WASHER - flat, #8	84048	*	*	*	*	1
35	POINTS - breaker (set)	A-58165	*	*	*	*	1
		A-55971	*	*	*	*	1
36	Includes: WICK - felt	55984	*	*	*	*	1
37	WASHER - terminal	55983	*	*	*	*	1
38	NUT - terminal	55982	*	*	*	*	1
39	TAB - ground lead	57733	*	*	*	*	1
40	BOX - breaker w/caps	57744	*	*	*	*	1
		55969	*	*	*	*	1
41	CLAMP - dust cover	55980	*	*	*	*	1
42	SCREW - pan hd., 10 - 32 x 9/16	80576	*	*	*	*	1
43	WASHER - sealing (felt)	56292-A	*	*	*	*	1
		55989	*	*	*	*	1
44	SCREW - flat hd., 6 - 32 x 5/16	80598	*	*	*	*	2
45	CLAMP - inner	55962	*	*	*	*	1
46	SCREW - pan hd., 8 - 32 x 1/4	80575	*	*	*	*	3
47	CLAMP - outer	55161	*	*	*	*	1
48	BACK PLATE	A-57808	*	*	*	*	1
		A-56165-A	*	*	*	*	1
		A-56079	*	*	*	*	1
49	Includes: SEAL - garlock	56134	*	*	*	*	1
		71597	*	*	*	*	1
50	BEARING - needle	57533	*	*	*	*	1
		55204	*	*	*	*	1
51	GOVERNOR (6)	A-58222-1	*	*	*	*	1
	Includes: WASHER - burr	84066	*	*	*	*	1
	ARM	55943	*	*	*	*	1
52	KEY - rotor	75078	*	*	*	*	1
53	SPRING - governor (6)	58035	*	*	*	*	1
54	BRACKET - governor spring (mount on carburetor) (6)	57935-A	*	*	*	*	1

Leon's Chainsaw Parts & Repair
Do Not Sell or Reproduce

Circled asterisk * denotes a part that may require adaptation for use in older saws; see notes.

Black circled numerals () refer to note numbers on page 8.

No.	Description	Part No.	Wiz	Wiz A	Wiz B	Super Wiz	Qty.
1	FUEL TANK	A-55568-A	*	*	*	*	1
	DECAL - "HOMELITE"	56400	*	*	*	*	1
	DECAL - "Instructions"	56596-A	*	*	*	*	1
2	SCREW - panhd., 6-32 x 1/2	80630	*	*	*	*	2
3	CAP - air filter	55066-B	*	*	*	*	1
4	FILTER - air	57172-A 56532	*	*	*	*	1 1
5	GASKET - cement to tank	57173	*	*	*	*	1
6	CAP - fuel Includes #7, #8	A-56908	*	*	*	*	1
7	VALVE - relief	56865	*	*	*	*	1
8	GASKET	72173	*	*	*	*	1
9	NUT - hex, 1/4 - 28	81114	*	*	*	*	1
	NUT - hex, 1/4 - 20	81108	*	*	*	*	1
	SCREW - fil. hd., 12-24 x 5/8	80710	*	*	*	*	1
	SCREW - panhd., 8-32 x 5/8	80582	*	*	*	*	1
10	CAP - oil filler (Incl. #11) PLUG - screw	A-56580 55140-A	*	*	*	*	1 1
11	GASKET - filler cap	56607	*	*	*	*	1
12	LINE - oil	AA-55191	*	*	*	*	1
13	VALVE - check	A-55824	*	*	*	*	1
14	GASKET	72174	*	*	*	*	1
15	STRAINER - outlet w/nail	A-56200	*	*	*	*	1
16	Includes: FILTER	74374	*	*	*	*	1
17	RING - rubber	56196	*	*	*	*	2
18	SLEEVE - flexible	72107-A	*	*	*	*	1
19	FITTING - fuel outlet	AA-72475	*	*	*	*	1
20	SCREW - flathd., 6-32 x 3/8	80451	*	*	*	*	1
21	ELBOW - fuel fitting	74917	*	*	*	*	1
22	LINE - fuel	A-56379	*	*	*	*	1
23	CAP - oil line	AA-55167	*	*	*	*	1
24	GASKET	55107	*	*	*	*	1
25	SPRING - check valve	55288-A	*	*	*	*	1
26	BALL - check	25527	*	*	*	*	1
27	SEAT - check ball	55109-A	*	*	*	*	1
28	GASKET	55110	*	*	*	*	1
29	SLEEVE - flexible (oil)	55133-A	*	*	*	*	1
30	PICK-UP - oil	AA-55259-A	*	*	*	*	1
31	SPRING - plunger	71762	*	*	*	*	1
32	PLUNGER - oil (NO button) Includes: "O" RING	A-57334-3 74388	*	*	*	*	1 2
33	BUTTON - plunger	57289-1	*	*	*	*	1
34	GASKET - air elbow	56711-1	*	*	*	*	1
35	SCREW - panhd., 10-32 x 5/8	80572	*	*	*	*	2
36	SCREW - panhd., 10-32 x 1/4	80638	*	*	*	*	2
37	ADAPTER - air filter	55019-3 55019-2	*	*	*	*	1 1
38	GASKET - adapter	55059	*	*	*	*	1
39	SCREW - hexhd., 1/4-20 x 13/16	80573	*	*	*	*	5
40	PLATE - bumper	55106	*	*	*	*	1

No.	Description	Part No.	Wiz	Wiz A	Wiz B	Super Wiz	Qty.
41	HANDLE - one-clamp mount (shown) flush-cut	A-57053	*	*	*	*	1
		AA-55119	*	*	*	*	1
	wrap-around w/80308 screw	A-57057	*	*	*	*	1
		A-55518	*	*	*	*	1
	HANDLE - two - clamp mount (not shown) flush-cut	A-57673	*	*	*	*	1
	wrap-around w/80308 screw	A-57671	*	*	*	*	1
42	ELBOW - connector	31734	*	*	*	*	1
43	ADAPTER - straight	31735	*	*	*	*	1
44	WASHER - lock, 5/16	83093	*	*	*	*	2
45	SCREW - hexhd., 5/16-18 x 1 1/2	80027	*	*	*	*	2
46	WASHER - flat, 1/4 (thick) (thin)	84095-2 84004	*	*	*	*	2 2
47	NUT - flex-lock, 1/4-28	81130	*	*	*	*	2
48	SCREW - panhd., 10-32 x 3/4	80583	*	*	*	*	3
49	ADAPTER - reed valve	55932	*	*	*	*	1
49A	w/studs	A-55800-A	*	*	*	*	1
50	REED	55941	*	*	*	*	4
51	PLATE - reed		*	*	*	*	4
52	SCREW - panhd., 4-40 x 3/16	80658	*	*	*	*	8
53	WASHER - lock, 1/4	83009	*	*	*	*	2
54	NUT - hex, 1/4 - 20	81013	*	*	*	*	2
55	GRIP - pistol w/pin & 55372 left	AA-55281	*	*	*	*	1
56	ROD - throttle - used w/gov.	56397-1	*	*	*	*	1
	Used: w/governor	A-55954	*	*	*	*	1
57	Includes: SPRING	55045-A	*	*	*	*	1
58	TRIGGER - throttle	AA-55207	*	*	*	*	1
59	COVER - pistol grip Includes: LOCK - throttle	AA-55228 AA-55282	*	*	*	*	1 1
60	SPRING - lock	72970	*	*	*	*	1
61	SCREW - panhd., 8-32 x 1/2	80560	*	*	*	*	7
62	SCREW - hexhd., 8-32 x 5/8	80582	*	*	*	*	2
63	SHIELD - carburetor	55104-2A 55104-2	*	*	*	*	1 1
64	PLUG - button	56533	*	*	*	*	1
65	CARBURETOR	A-57440 A-56484 A-56505-A	*	*	*	*	1 1 1
66	GASKET - carburetor	55553	*	*	*	*	1
67	GASKET - spacer adapter	55946	*	*	*	*	1
68	STUD	55945	*	*	*	*	2
68A	part of A-55800-A	27464	*	*	*	*	2
69	SPACER - reed adapter	55933	*	*	*	*	1
70	GASKET - adapter	55116	*	*	*	*	1
71	CLAMP - handle	55145	*	*	*	*	1
72	CUSHION - handle	55146	*	*	*	*	1
73	SCREW - hexhd., 1/4-20 x 5/8	80581	*	*	*	*	3
74	BRACE	58549	*	*	*	*	1

HOMELITE **WIZ** SERIES CHAIN SAW

FIGURE 3

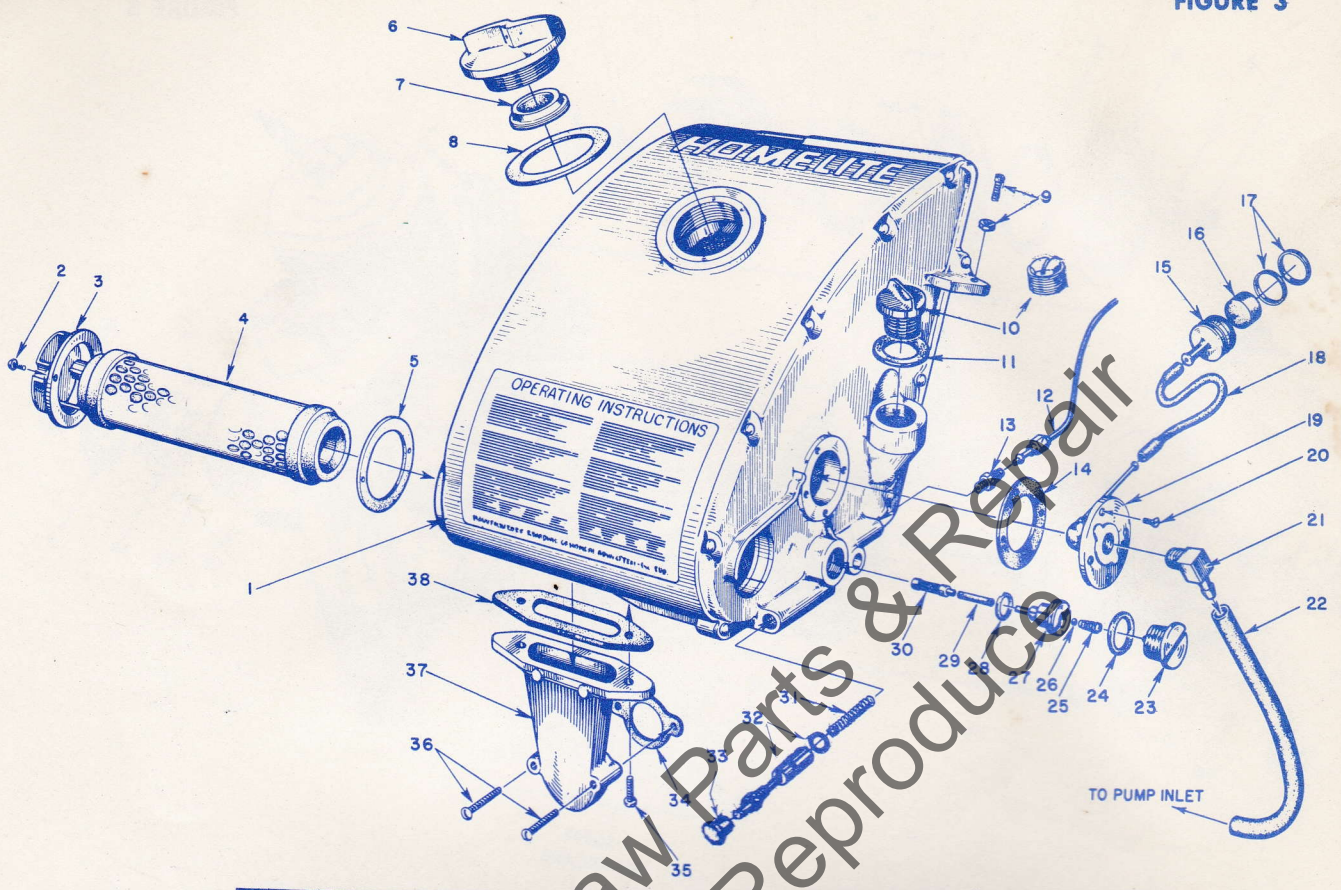
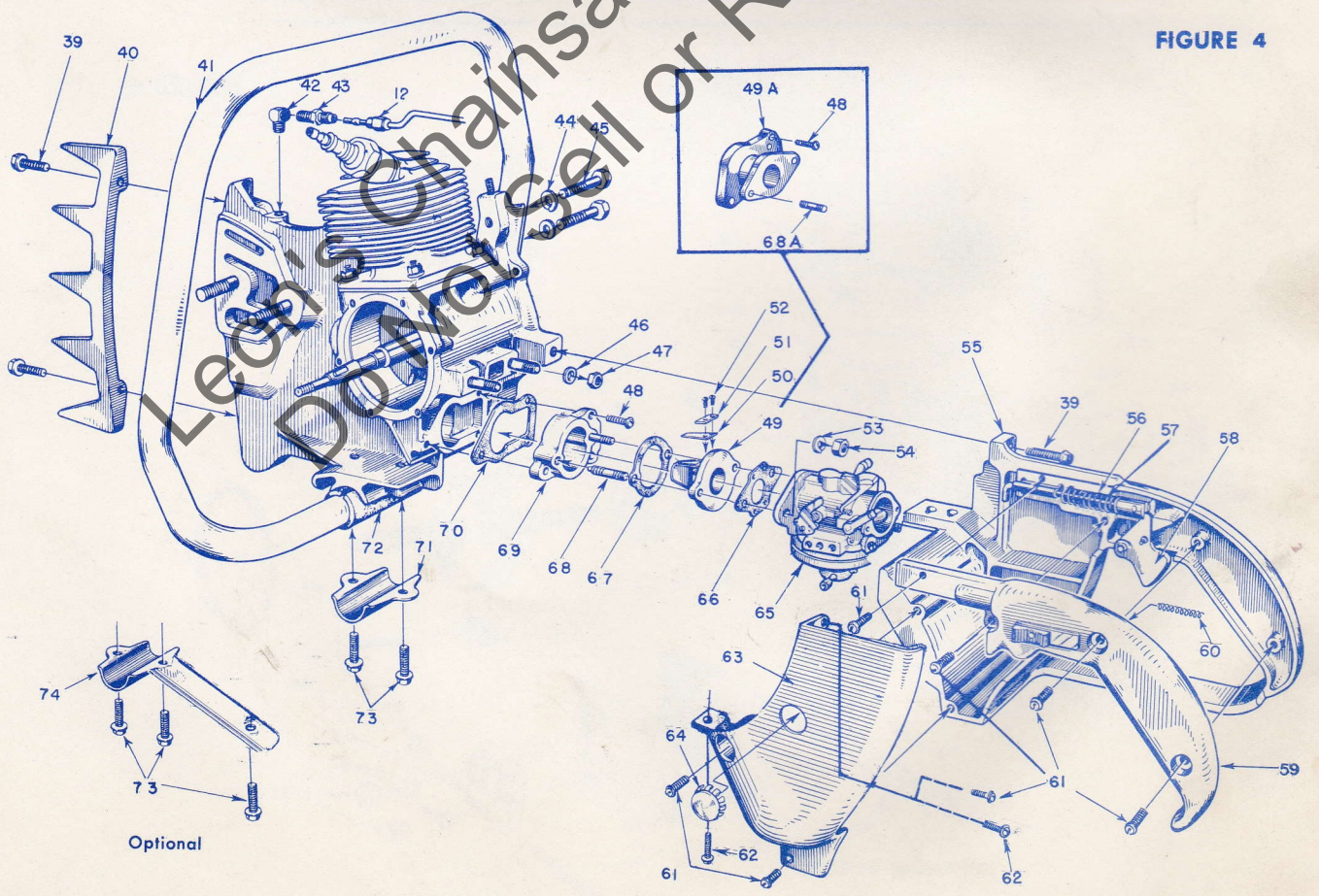


FIGURE 4



Optional

HOMELITE **WIZ** CHAIN SAW
SERIES

FIGURE 5

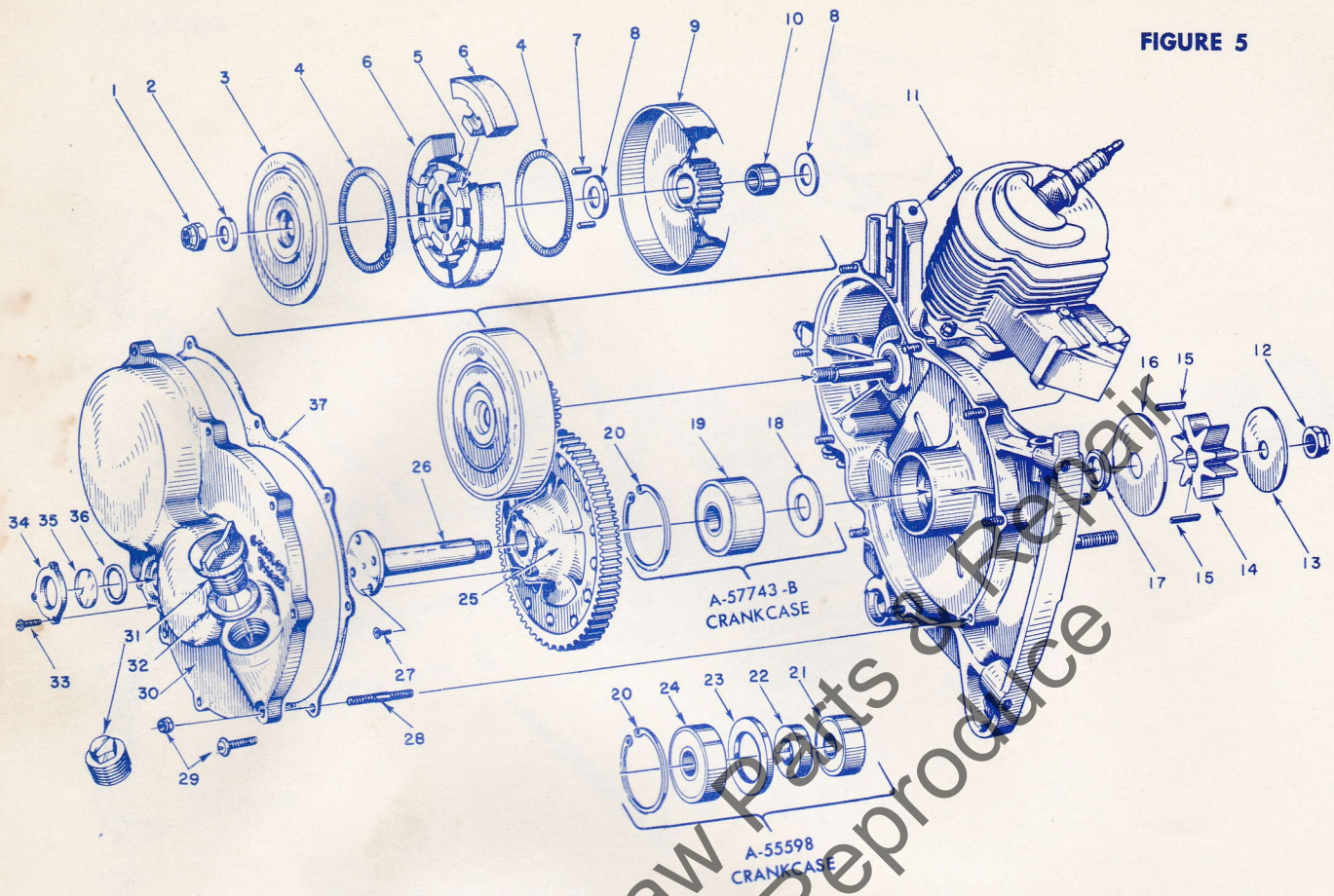
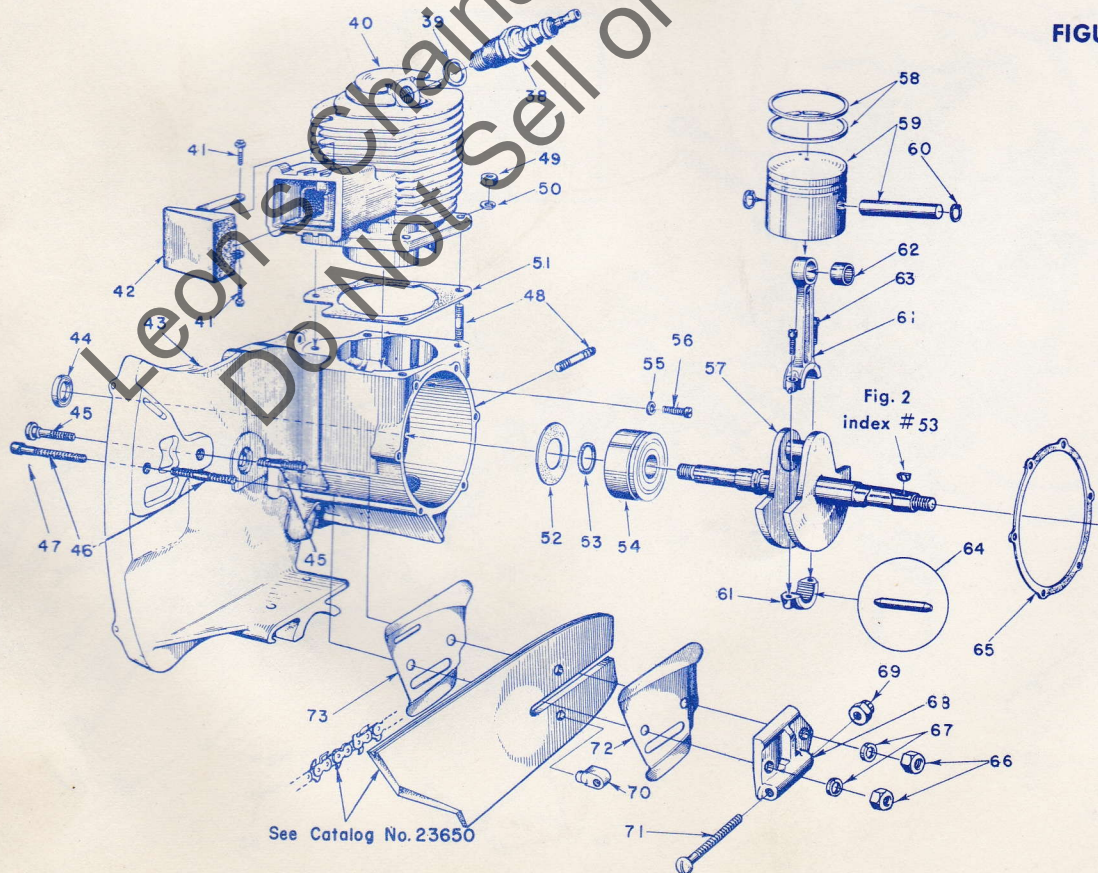


FIGURE 6



See Catalog No. 23650

HOMELITE **WIZ** CHAIN SAW

SERIES

Circled asterisk * denotes a part that may require adaptation for use in older saws; see notes.

Black circled numerals () refer to note numbers on page 8.

No.	Description	Part No.	Wiz	Wiz A	Wiz B	Super	Qty.	No.	Description	Part No.	Wiz	Wiz A	Wiz B	Super	Qty.
1	NUT - 5/8" hex, 3/8 - 24	10 81192	*	*	*	*	1	33	SCREW - binder hd., 6-32x3/8 pan hd.	80548 80571	*	*	*	*	3 3
2	WASHER - clutch	55036	*	*	*	*	1	34	PLATE - window	55098	*	*	*	*	1
3	COVER - clutch	11 58023				*	1	35	WINDOW - plastic	55099	*	*	*	*	1
		55126-A	*	*	*	*	1	36	GASKET - "O" ring	55100	*	*	*	*	1
4	SPRING - clutch	55123-C	*	*	*	*	2	37	GASKET - gear case cover	55053-B	*	*	*	*	1
5	SPIDER - clutch	58027				*	1	38	SPARK PLUG - Champion J6J	40190-5	*	*	*	*	1
		55075-3A				*	1	39	Includes: GASKET	14 25035	*	*	*	*	1
6	SHOE - clutch	11 A-58028				*	6	40	CYLINDER	56408 55491-1	*	*	*	*	1 1
		A-55692-A	*	*	*	*	6	41	SCREW - pan hd., 10 - 32 x 1/2	80625	*	*	*	*	2
7	KEY - clutch	55225-1A	*	*	*	*	2	42	CAP - exhaust	A-56613-A	*	*	*	*	1
8	WASHER - thrust	12 56132	*	*	*	*	2	43	CRANKCASE	15 A-57743-B	*	*	*	*	1
		55034	*				2	Includes:	A-55598	*				1	
9	CLUTCH DRUM & DR. GEAR 3.57:1 ratio, 21 teeth	11 A-58260				*	1	11	STUD - fuel tank	Index #11					1
		12 A-56849	*	*	*	*	1	28	STUD - cover	Index #28					9
		12 A-56830	*				1	44	SEAL - garlock	56134	*	*	*	*	1
	(optional) 2.84:1 ratio, 25 teeth	A-58259				*	1		72397	*				2	
	(optional) 2:1 ratio, 32 teeth	A-56515	*	*	*	*	1	45	BOLT - guide bar	15 58020-A	*	*	*	*	1
		A-58460	*	*	*	*	1		STUD - guide bar	57052	*	*	*	*	1
		A-56158	*	*	*	*	1		55056-D	*				1	
10	BEARING - drive gear	12 56133	*	*	*	*	1	46	BOLT - guide bar	15 57625	*	*	*	*	1
		55035	*				1		STUD - guide bar	57051	*	*	*	*	1
11	STUD - fuel tank (part of crankcase)	7 55871		*	*	*	1		55606	*				1	
		57349		*	*	*	1	47	PIN - bolt	15 41738	*	*	*	*	1
12	NUT - flex-lock, 1/2 - 20 flex-lock, 3/8 - 24	10 81101	*	*	*	*	1	48	STUD -	55871	*	*	*	*	6
		81192	*	*	*	*	1	49	NUT - hex., 1/4 - 28	81065-2	*	*	*	*	4
		81116	*	*	*	*	1	50	WASHER - lock, 1/4	83009	*	*	*	*	4
13	WASHER - sprocket (outer)	56077	*	*	*	*	1	51	GASKET - cylinder	56864	*	*	*	*	1
		55035	*				1	52	GASKET - sealing	55048-A	*	*	*	*	1
14	SPROCKET - 8 tooth, 1/2" pitch	55593-2	*	*	*	*	1	53	RING - retaining	56109	*			*	1
		55593	*				1		55047	*				1	
	7 tooth, 9/16" pitch	74481-1	*	*	*	*	1	54	BEARING - main	56097-S	*	*	*	*	1
		74481	*				1		55193	*				1	
15	KEY - sprocket	56076-1A	*	*	*	*	2	55	WASHER - lock (thin)	83061	*	*	*	*	2
		55482-1A	*	*	*	*	2	56	SCREW - bearing retainer	19238-A	*	*	*	*	2
16	WASHER - sprocket (inner)	56074	*	*	*	*	1	57	CRANKSHAFT	2 58103				*	1
		55801	*				1		57555-A	*			*	1	
17	SPACER - sprocket	56071	*	*	*	*	1		57095	*	*			1	
		55586-A	*	*	*	*	1		57195	*	*			1	
18	SEAL - formica	56072	*	*	*	*	1		56535-A	*				1	
19	BEARING - ball	56219-S	*	*	*	*	1	58	RING - piston	55038	*	*	*	*	2
20	RING - retaining	28922	*	*	*	*	1	59	PISTON & PIN	AA-55279	*	*	*	*	1
21	BEARING - ball	55184	*				1	Includes:	55095	*	*	*	*	2	
22	SPACER - bearing	55024-A	*				1	60	CONNECTING ROD	AA-55195-A	*	*	*	*	1
23	SHOULDER - spacer	55025	*				1	62	Includes: BEARING - pin	55196	*	*	*	*	1
24	BEARING - ball	72040	*				1	63	SCREW - 8-32x9/16	80805	*	*	*	*	2
25	DRIVEN GEAR	12 A-56824	*	*	*	*	1	64	ROLLERS (set of 27)	AA-55280	*	*	*	*	1
		AA-55068-2	*				1	65	GASKET - back plate	55049	*	*	*	*	1
26	SHAFT - sprocket	56070	*			*	1	66	NUT - hex, 3/8 - 16	15 81089-2	*	*	*	*	2
		55005-C	*				1	67	WASHER - lock	83018	*	*	*	*	2
27	SCREW - flat socket, 12-25x3/8	80651	*	*	*	*	4	ADJUSTING PLATE	A-55591	*	*	*	*	1	
28	STUD - (part of crankcase)	13 57350	*	*	*	*	9	Includes:							
29	NUT - 10 - 32	13 81109	*	*	*	*	9	68	PLATE - adjusting	55551-B	*	*	*	*	1
	SCREW - pan hd, 10-32x5/8	80572	*	*	*	*	9	69	NUT	81123	*	*	*	*	1
30	COVER - gear case	11 AA-55226-C	*	*	*	*	1	70	PIN - adjusting	55552	*	*	*	*	1
31	CAP - oil filler, Includes #32 PLUG - oil filler	11 A-56580	*	*	*	*	1	71	SCREW - pin	80617	*	*	*	*	1
		55140-A	*				1		rd. hd., 5/16-18x2						
32	GASKET - filler cap, part of A-56580	56607	*	*	*	*	1	72	PLATE - bar (outer)	15 56957-A	*	*	*	*	1
			*				1	73	PLATE - bar (inner)	15 56956	*	*	*	*	1
			*				1		SHIM - (inner)	55128	*				1

NOTES

SUPER WIZ models modified after S/N 1309088; late models incorporate new fan housing with additional handle support, cylinder shield with cap, governor with spring bracket on carburetor, and carburetor throttle opening spring replaced with #56175 throttle friction spring. Alternate parts are listed; check serial number of saw for correct application. See SM#419-CS.

- ① STARTER PARTS - Refer to F-M Starter Parts Sheet #23649-A. Note possible modifications identified by I.D. of starter cup and mating rotor; also refer to CRANKSHAFT Note ②.
- ② NUT Larger I.D. than original identifies saw that LOCKWASHER has been converted to later and larger rotor and crankshaft. Refer to Starter Parts Sheet #23649-A for corresponding starter cup and rotor; also see SM#296-CS, 382-CS, 382a-CS. FLATWASHER
 ROTOR - Larger bore fits later crankshafts with larger taper on timing end; See SM#296-CS, 382-CS and 382a-CS. Also see Note ⑤.
 GASKET - dust cover - Larger I.D. required on larger crankshafts; see above mentioned Service Memos.
 CRANKSHAFT - Improved crankshaft requires change of rotor, dust cover gasket, and fastening parts; see above mentioned Service Memos.
- ③ SCREW - #80577 only 3 used; one #80360 (longer) used thru #55104-2 carburetor shield. Only 2 used with new #55104-2A shield (see SCREW - #80582 below).
 SHIELD, carburetor - #55104-2A has added lug on bottom and thicker lug on top; attach with longer (#80582) screws.
 SCREW - #80582 (8-32 x 5/8) fastens new #55104-2A carburetor shield to fan housing.
 BRACE, handle - #58549, mount one end on drivecase in place of original handle bar clamp (use original clamp screws). Locate hole at end of brace against bottom of throttle handle; drill and tap a 1/4 - 20 hole, attach brace to handle with #80581 screws.
 HANDLE - #A-57053 supersedes #AA-55119 #A-57057 supersedes #A-65118
- ④ SCREW - handle clamp - #80521 shorter, replaces original #80289 screw (12-24 x 3/8) and #83056 (#12) lockwasher.
- ⑤ COIL - #55986-A may be used with original rotors (without "-A" suffix); new rotor (with "-A" suffix) requires new coil.
- ⑥ GOVERNOR - #A-58222-1 used on Super Wiz units above S/N 1309087. Below S/N 1309088 Super Wiz saws not originally equipped with governors; see SM#419-CS for special design governor and use of throttle friction spring in carburetor.
 SPRING, governor - #58035 used with GOVERNOR; see above.
 BRACKET, spring - #57935-A used with GOVERNOR; see above.
 ROD - #A-55954 requires #55045-A spring; used with GOVERNOR.
 SPRING - #55045-A used with GOVERNOR.
- ⑦ FUEL TANK - #A-55568-A replaces original tanks; requires A-56580 oil filler cap
 NUT, fuel tank - #81114 used with #55871 stud in A-57743-B crankcase.
 #81108 used with #57349 stud in A-57743-A crankcase.
 SCREW - #81108 replaced by stud and nut (above).
 STUD, fuel tank - #55871 stud used in A-57743-B crankcase. #57349 stud used in A-57743-A crankcase.
 CAP, oil filler - #A-56580 used in replacement fuel tanks.
 PLUG, oil filler - #55140-A used only in original fuel tanks.
 WASHER - #84095-2 case-hardened washer; see SM #423-CS.
- ⑧ PLUNGER, oil original plunger and button assembly now serviced by separate plunger and button.
- ⑨ CARBURETOR - #A-57440 supersedes #A-56484, #A-56505-A. Refer to Carburetor Parts List #23538 for #A-57440 carburetor, #23521 for #A-56484 carburetor, #23520 for A-56505-A carburetor. Also see SM#418-CS.
- ⑩ NUT - #81192 replacement nut permits use of #22808 combination wrench.
- ⑪ COVER, clutch - #58023 used with heavy duty clutch drum, spider and shoes; new #AA-55226-C gear case cover required.
 SPIDER - #58027 used with heavy duty clutch drum, clutch cover, and shoes; new #AA-55226-C gear case cover required.
 SHOE - #A-58028 used with heavy duty clutch drum, clutch cover, and spider; new #AA-55226-C gear case cover required.
 CLUTCH DRUM & GEAR - #A-58260 used with heavy duty clutch cover, spider, and shoes; new #AA-55226-C gear case cover required. Optional 2.84:1 and 2:1 ratio also available.
 COVER, gear case - #AA-55226-C (new) accommodates heavy duty clutch drum, clutch cover, spider and shoes; original narrow clutch parts still may be used with new cover. Replaces original #AA-55226-A, #AA-55226-B covers.
 CAP, oil filler - #A-56580 does not fit #AA-55226-A cover; see SM#351-CS.
 PLUG - oil filler - #55140-A used in #AA-55226-A cover; see SM#351-CS.

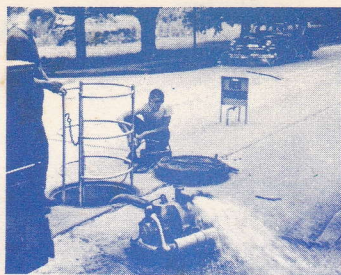
(continued on Page 9)

NOTES

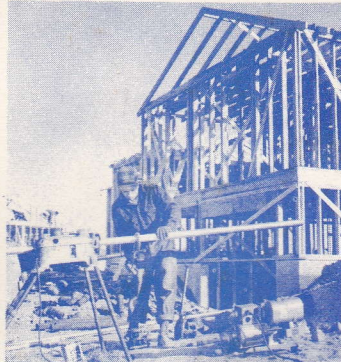
- 12 WASHER, thrust - #56132 large bore, #55034 small bore.
CLUTCH DRUM & GEAR (below)
CLUTCH DRUM & GEAR - #A-56849 (3/4" bore) supersedes
#A-56135 (discontinued) in early
models with small crankshaft;
#A-56830 (13/16" bore) supersedes
#AA-55086 (discontinued) in units
with larger crankshaft.
BEARING, drive gear - #56133 large bore; #55035 small bore.
DRIVEN GEAR - #A-56824 supersedes original #AA-55068-2.
See SM#326-CS, #335-CS.
- 13 STUD - #57350 with #81109 nut replaces #80572 screw; see
SM#342-CS.
NUT - #81109 nut with #57350 stud; see SM#342-CS.
SCREW - #80572 replaced by stud and nut (above).
- 14 SPARK PLUG - Cold weather operation use hotter plug; see
SM#355-CS.
- 15 CRANKCASE - #A-57743-B supersedes #A-57743-A (Super
Wiz). #A-57743 (Wiz-B), and #A-57099 (Wiz-A).
BOLT, guide bar - #58020-A replaces #58020 with #58154 pin
(in #A-57743-A crankcase), and #57624
with #57676 pin (in #A-57743 crankcase).
See SM#409-CS, #409a-CS. #57625 bolt
used in #A-57743, A-57743-A, A-57743-B.
STUD, guide bar - #57052 and #57051 used in #A-57099 (Wiz-A)
crankcase. Can be used in #A-55598 (Wiz)
crankcase if later type #56957-A and #56956
guide bar plates are also installed.
#55056-D and #55606 used in #A-55598 (Wiz)
crankcase. Can be replaced by later type -
see above.
NUT - #81089-2 replaces #81089; see SM#409a-CS.
PLATE, guide bar - #56957-A and #56956 can be used in A-55598
(Wiz) crankcase if both later type studs
are installed; see STUD (above).
PIN - #41738 used with #57625 guide bar bolt, see BOLT (above).

Leon's Chainsaw Parts & Repair
Do Not Sell or Reproduce

**You'll
SPEED WORK
and make
MORE MONEY
with...**



HOMELITE
SELF-PRIMING PUMPS



HOMELITE
DEPENDABLE GENERATORS



HOMELITE
POWERFUL ONE-MAN CHAIN SAWS



HOMELITE
ONE-MAN CONCRETE VIBRATORS



HOMELITE — BOSCH (Germany)
ELECTRIC BUILDER'S HAMMERS

HOMELITE

A **textron** DIVISION

PORT CHESTER, N. Y., U. S. A.