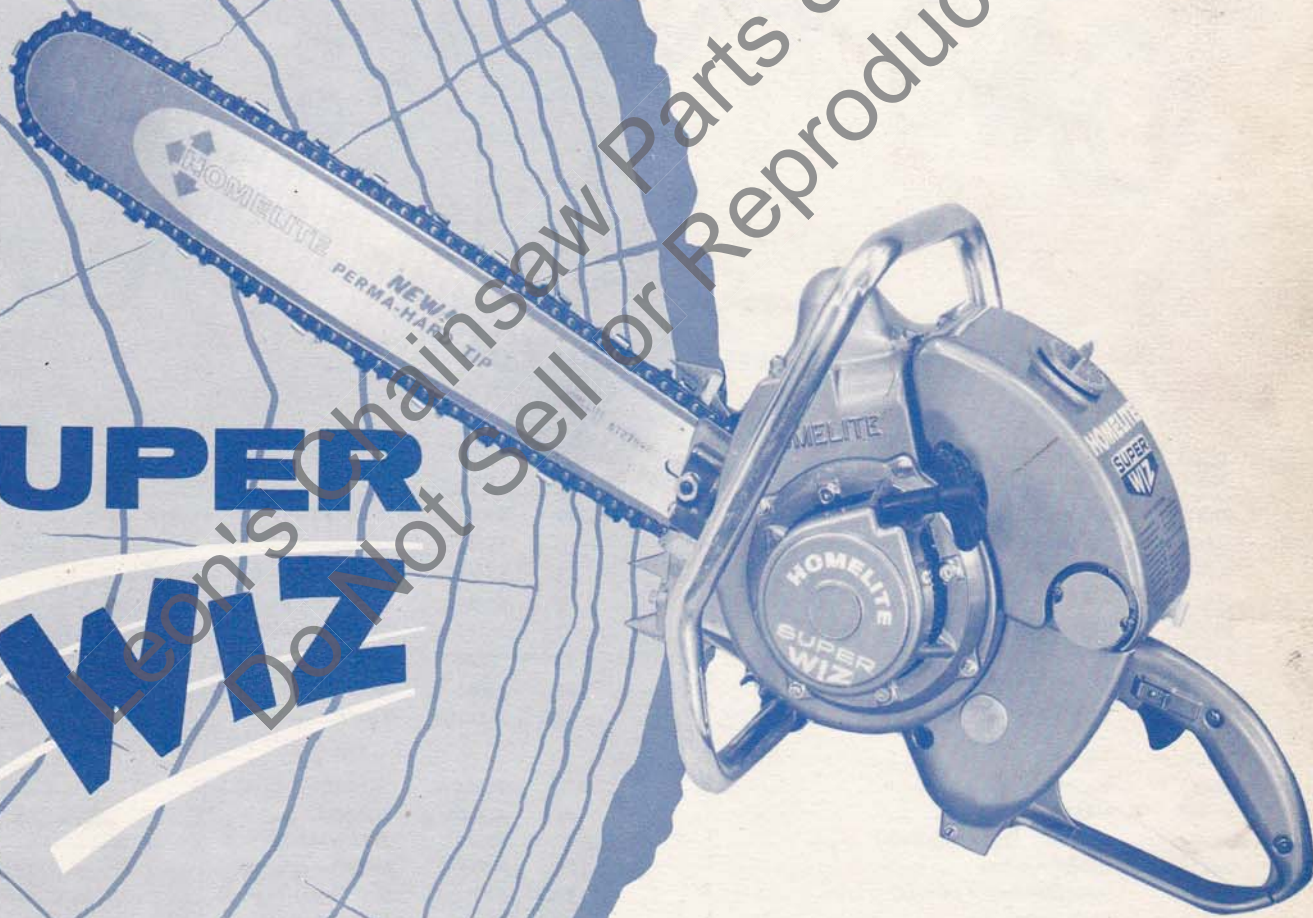


HOMELITE CHAIN SAW



SUPER WIZ

Leon's Chainsaw Parts & Repair
Do Not Sell or Reproduce

PARTS LIST

SUPER
HOMELITE WIZ CHAIN SAW

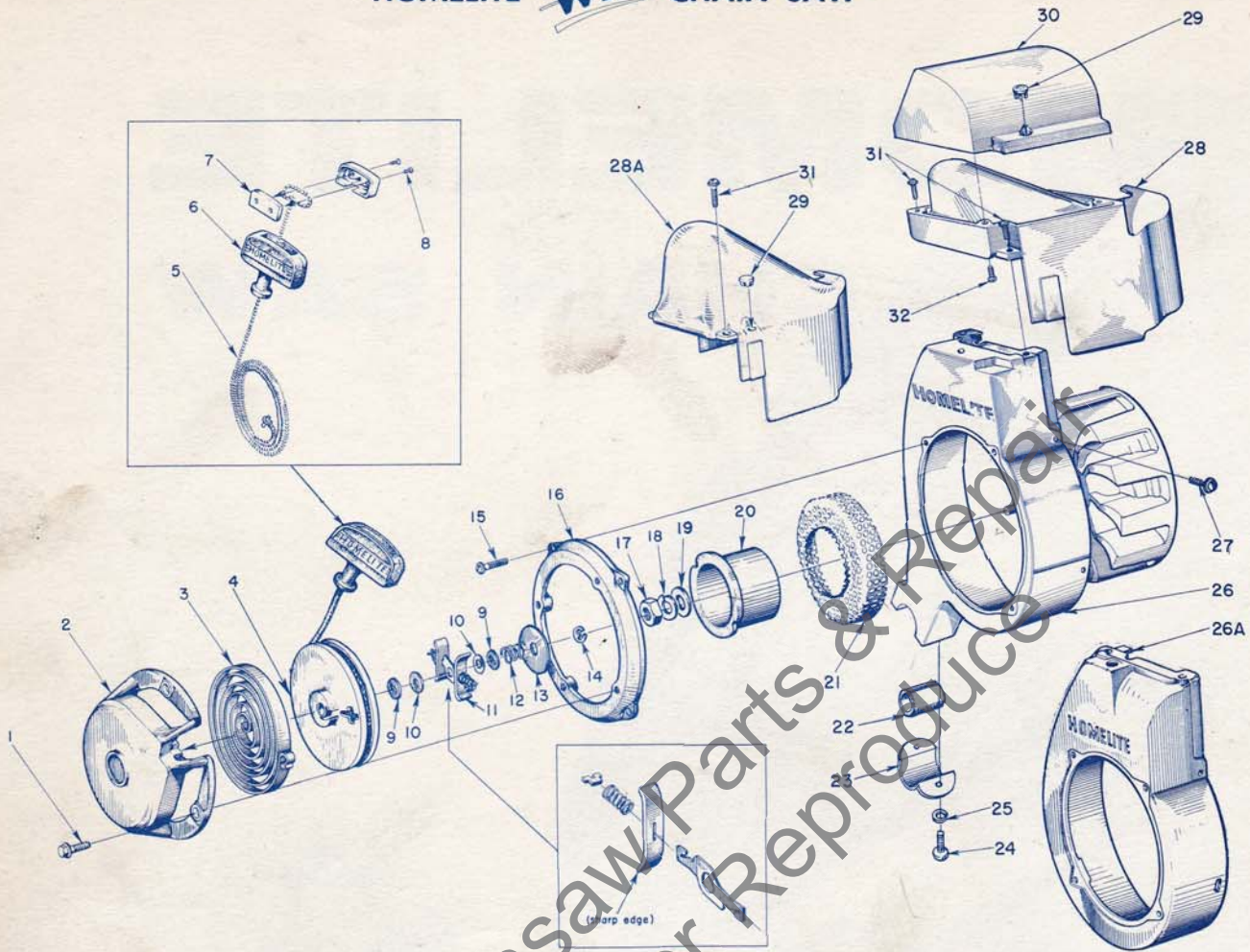


FIGURE 1 — STARTER PARTS

Index No.	Part No.	Description	No. Required
1	80681	SCREW— $\frac{1}{4}$ -20 x $\frac{1}{2}$ hex hd.	4
2	A-56450-2A	COVER—pulley (Service Replacement)	1
	56752	DECAL—"HOMELITE"	1
3	56451-1	SPRING—rewind	1
4	56452	PULLEY—starter	1
5	55898	ROPE—starting	1
6	55937	GRIP—starting	1
7	A-56081	INSERT—grip, w/ screws	1
		Includes	
8	80619	SCREW	2
9	56456	WASHER—brake	2
10	56457	WASHER—fibre	2
11	A-57647	FRICTION SHOE ASSEMBLY	1
12	56455	SPRING—brake	1
13	76436	WASHER—brake retainer	1
14	90618	RING—retaining	1
15	80576	SCREW—10-32 x $\frac{3}{16}$ pan. hd.	4
16	56531	ADAPTER—starter	1
17	81110	NUT— $\frac{7}{16}$ -20 hex jam	1
18	83019	WASHER— $\frac{7}{16}$ lock	1

Index No.	Part No.	Description	No. Required
19	84055	WASHER— $\frac{7}{16}$ flat aluminum	1
20	56441-1	CUP—starter	1
21	56442	SCREEN—starter	1
22	56281	CUSHION—handle	1
23	56282-A	CLAMP—handle, fan housing	1
24	80289	SCREW—12-24 x $\frac{5}{8}$	2
25	83056	WASHER—lock, #12	2
26	A-58407	SHROUD—air	1
		Includes	
	80325-2	SCREW— $\frac{1}{4}$ -20 x $\frac{1}{4}$	1
26 A	A-56006-2	SHROUD—air	1
27	80577	SCREW—8-32 x $\frac{3}{8}$ pan hd.	4
28	56967-2	SHIELD—cylinder	1
28A	55015-2	SHIELD—cylinder	1
29	32814	PLUG—button	1
30	56968	CAP—cylinder shield	1
	57029	DECAL—"Homelite"	1
31	80560	SCREW—8-32 x $\frac{1}{2}$ pan hd.	2
32	80513	SCREW—self-tapping #6 x $\frac{1}{2}$	4

NOTE #1: Complete FM Starter Assembly, less fastening parts, purchasable as A-56540-6

SUPER
HOMELITE WIZ CHAIN SAW

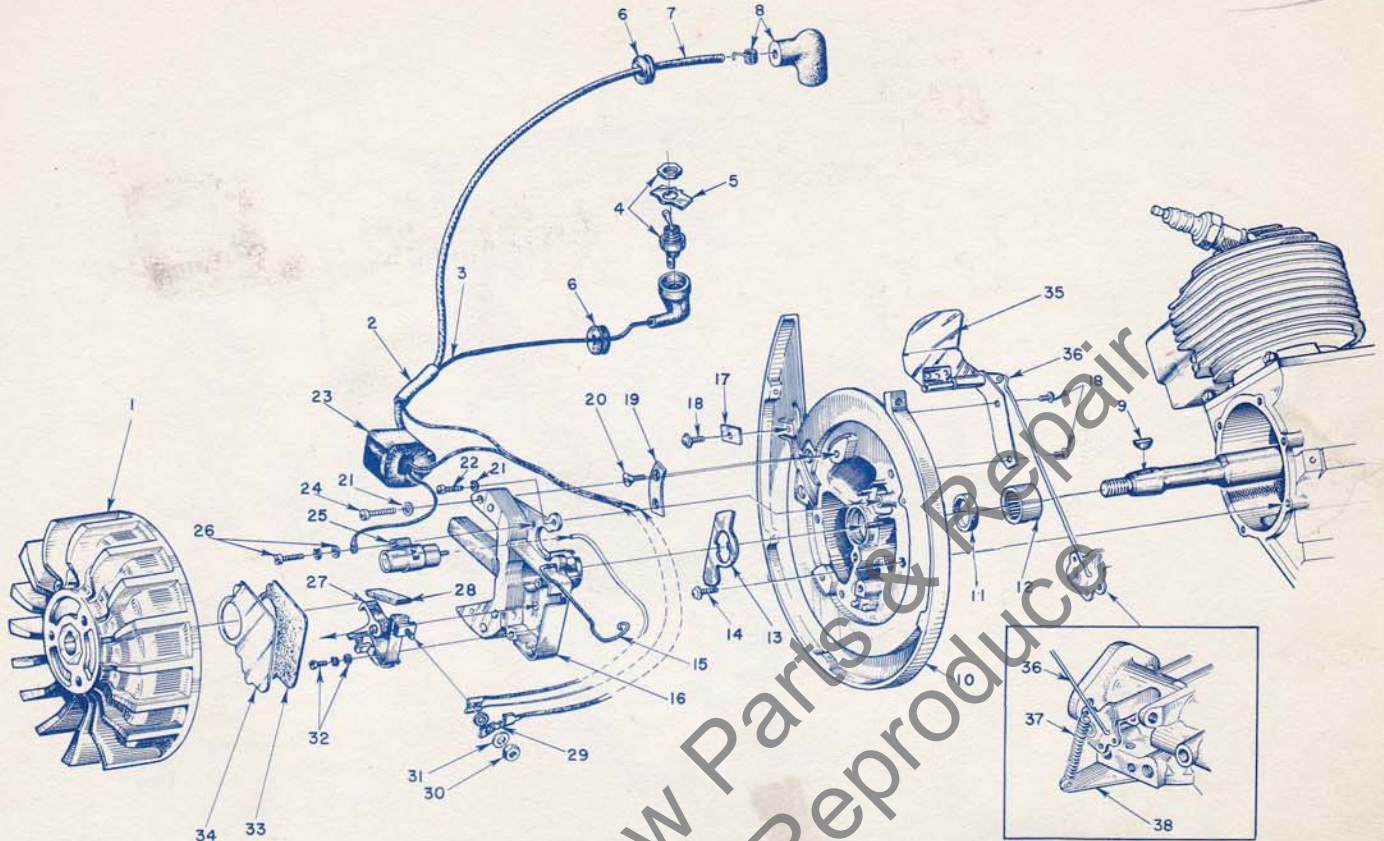


FIGURE 2 — IGNITION SYSTEM

Index No.	Part No.	Description	No. Required
1	57579	ROTOR	1
2	55290	SLEEVE—insulating	1
3	A-57738	LEAD—ground	1
4	A-57716	SWITCH—w/ screw	1
		Includes	
5	55879	PLATE (on-off)	1
6	60929	GROMMET	1
7	55235-A	LEAD—high tension	1
8	A-55373	TERMINAL (sparky)	1
9	75078	KEY—rotor	1
10	A-57808	BACKPLATE	1
		Includes	
11	56134	SEAL—garlock	1
12	57533	BEARING—needle	1
13	56292-A	WASHER—sealing, felt	1
14	80576	SCREW—10-32 x 1/8 pan hd.	6
15	55980	CLAMP—dust cover	1
16	57744	BOX—breaker w/core	1
17	55161	CLAMP—outer	1
18	80575	SCREW—8-32 x 1/4 pan hd.	3
19	55962	CLAMP—inner	1
20	80598	SCREW—6-32 x 3/16 flat hd.	2

Index No.	Part No.	Description	No. Required
21	83046	WASHER—#10 lock	3
22	80595	SCREW—10-24 x 1/2 fl. hd.	1
23	55986	COIL	1
24	80660	SCREW—10-24 x 7/8 fl. hd.	2
25	55987	CONDENSER—w/terminal	1
26	57750	SCREW GROUP	1
27	A-58165	POINTS (Set)	1
		Includes	
28	55984	WICK—felt	1
29	57733	TAB	1
30	55982	NUT—terminal	1
31	55983	WASHER—terminal	1
32	57749	SCREW GROUP	1
33	55978-2	GASKET—dust cover	1
34	55979	COVER—dust	1
35	A-58222-1	GOVERNOR	1
		Includes	
	84066	WASHER—governor arm burr	1
36	55943	ARM—governor	1
37	58035	SPRING	1
38	57935-A	BRACKET—governor spring	1
		(mount on carburetor)	

SUPER
HOMELITE WIZ CHAIN SAW

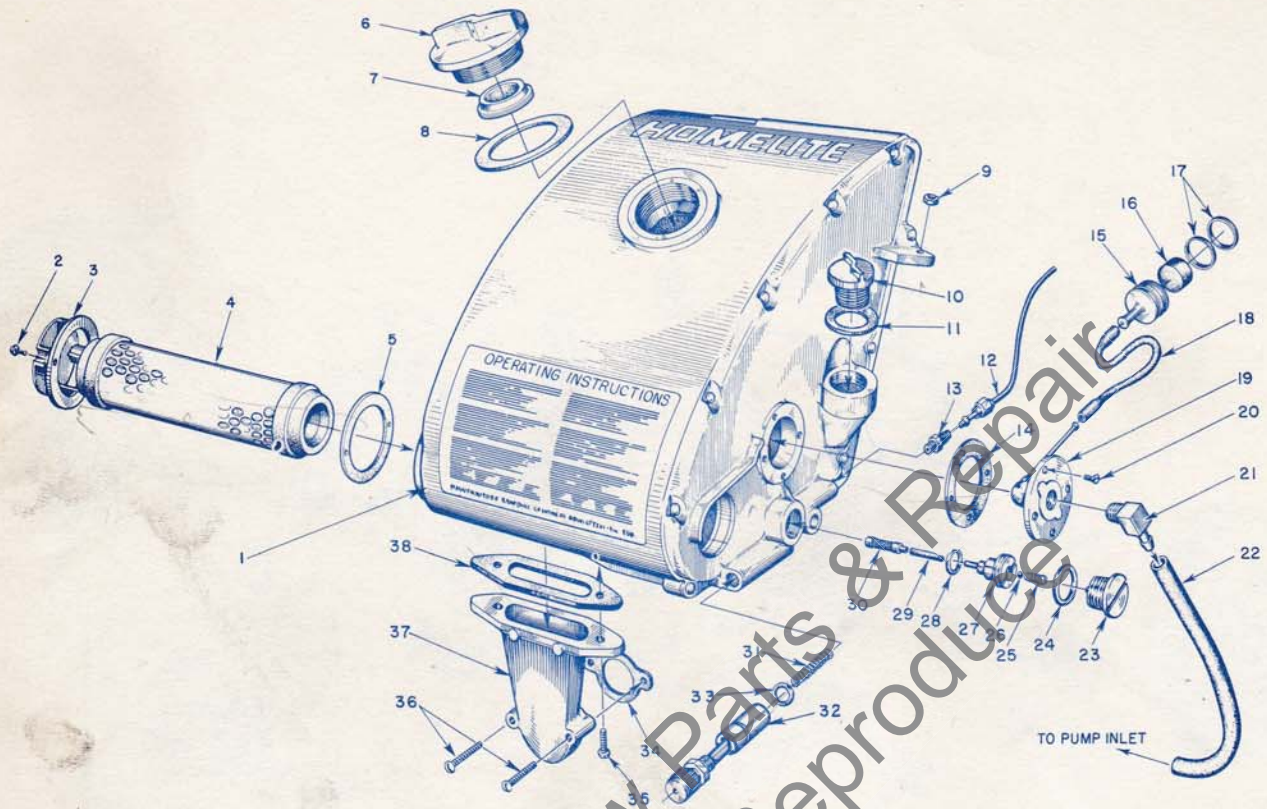


FIGURE 3—FUEL-AIR, AND CHAIN OIL SUPPLY

Index No.	Part No.	Description	No. Required	Index No.	Part No.	Description	No. Required
1	A-55568-A	FUEL TANK	1	17	56196	RING — rubber	2
	56400	DECAL — "HOMELITE"	1	18	72107-A	SLEEVE — flexible	1
	56596-A	DECAL — "Instructions"	1	19	AA-72475	FITTING — fuel outlet	1
2	80630	SCREW — 6-32 x 1/2 pan hd.	2	20	80451	SCREW — 6-32 x 3/8 flat hd.	4
3	55066-B	CAP — air filter	1	21	74917	ELBOW — fuel connection	1
4	57172-A	FILTER — air	1	22	A-56379	LINE — fuel	1
5	57173	GASKET (cemented to tank)	1	23	AA-55167	CAP — oil supply line	1
6	A-56908	CAP — fuel	1	24	55107	GASKET	1
		Includes		25	55288-A	SPRING — check valve	1
7	56865	VALVE — relief	1	26	25527	BALL — check	1
8	72173	GASKET	1	27	55109-A	SEAT — check ball	1
9	81108	NUT — 1/4-20	1	28	55110	GASKET	1
10	A-56580	CAP — oil filler	1	29	55133-A	SLEEVE — flexible	1
		Includes		30	AA-55259-A	PICK-UP — oil	1
11	56607	GASKET	1	31	71762	SPRING — plunger	1
12	AA-55191	LINE — oil	1	32	A-57834	PLUNGER—oil	1
13	A-55824	VALVE — check	1			Includes	
14	72174	GASKET	1	33	74388	"O" Ring	1
15	A-56200	STRAINER — outlet w/brass nail	1	34	72971-1	GASKET — air elbow	1
		Includes		35	80572	SCREW — 10-32 x 5/8 pan hd.	2
16	74374	FILTER — felt	1	36	80638	SCREW — 10-32 x 1 1/4 pan hd.	2
				37	55019-3	ADAPTER — air filter	1
				38	55059	GASKET — adapter	1

SUPER
WIZ CHAIN SAW

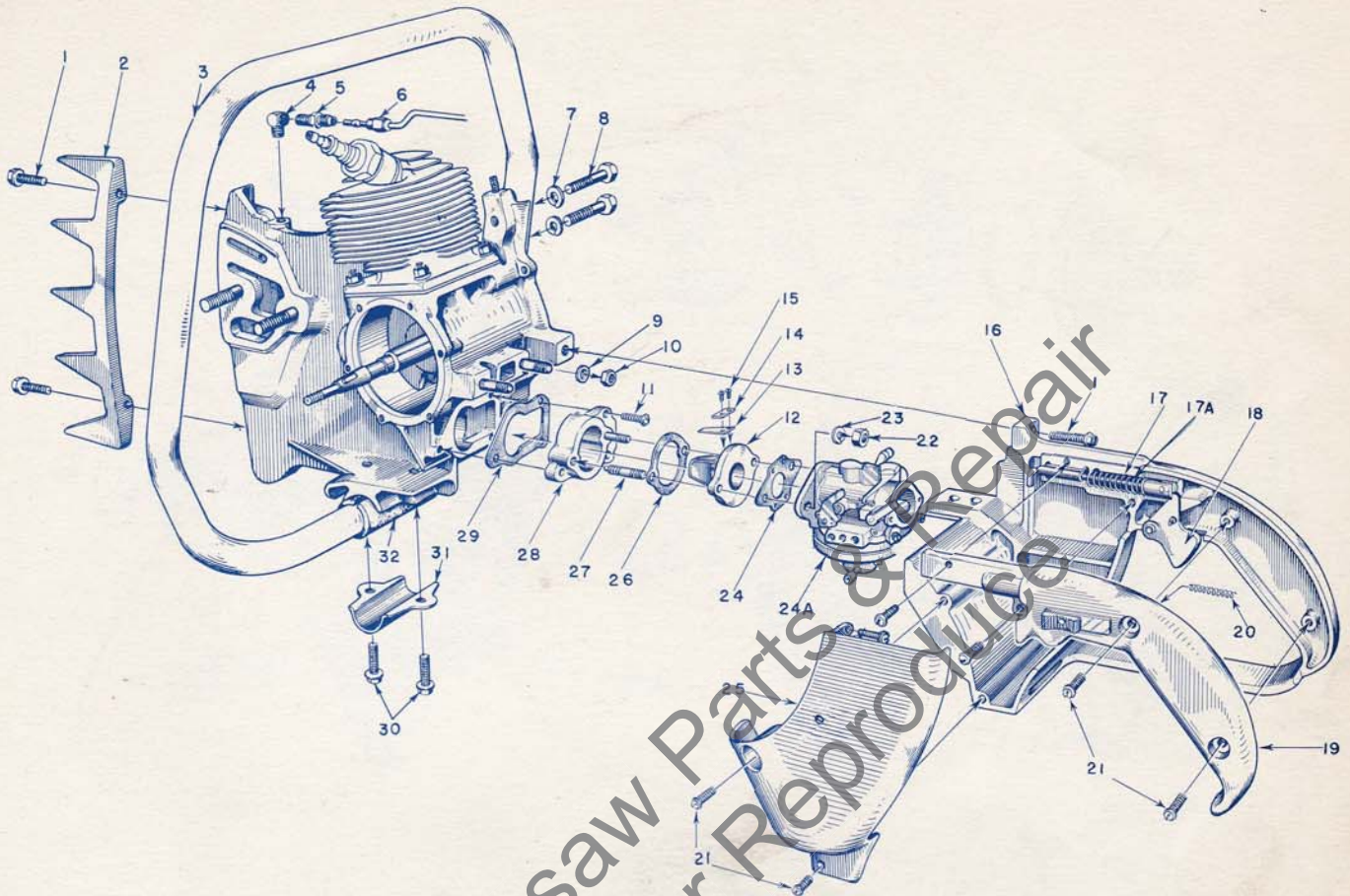


FIGURE 4 — HANDLE, GRIP AND REED VALVE PARTS

Index No.	Part No.	Description	No. Required
1	80573	SCREW— $\frac{1}{4}$ -20 x $\frac{13}{16}$ hex. hd.	5
2	55103	PLATE—bumper	1
3		ONE-CLAMP MOUNT HANDLE (shown)	
	A-57053	HANDLE—flush cut	1
	A-57057	HANDLE—wrap-around (w/80308 screw)	1
		TWO-CLAMP MOUNT HANDLE (not shown)	
	A-57673	HANDLE—flush-cut	1
	A-57671	HANDLE—wrap-around (w/80308 screw)	1
4	31734	ELBOW—connector	1
5	31733-1	ADAPTER—straight	1
6	*	LINE—chain oil	1
7	83003	WASHER— $\frac{7}{16}$ lock	2
8	80087	SCREW— $\frac{7}{16}$ -18 x $1\frac{1}{2}$ hex. hd.	2
9	84004	WASHER— $\frac{1}{4}$ flat	2
10	81130	NUT— $\frac{1}{4}$ -28 flex-lock	2
11	80583	SCREW—10-32 x $\frac{3}{4}$ pan. hd.	3
12	55932	ADAPTER—reed valve	1
13	55941	REED	4
14	55942	PLATE—reed	4
15	80658	SCREW—4-40 x $\frac{3}{16}$ pan. hd.	8
16	AA-55281	GRIP—pistol w/pin and 55372 felt	1
17	56397-1	ROD—plunger (used without governor)	1
	A-55954	ROD—throttle (used with governor)	1
		Includes	
17A	55045-A	SPRING	

Index No.	Part No.	Description	No. Required
18	AA-55207	TRIGGER—throttle	1
19	AA-55228	COVER—pistol grip	1
		Includes	
	AA-55282	LOCK—throttle	1
		Includes	
20	72970	SPRING—lock	1
21	80560	SCREW—8-32 x $\frac{1}{2}$ pan. hd.	7
22	81013	NUT— $\frac{1}{4}$ -20 hex	2
23	83009	WASHER— $\frac{1}{4}$ lock	2
24	55553	GASKET—carburetor	1
24A	A-57440	CARBURETOR—Refer to Carburetor sheet #23538	1
	58191	REPAIR KIT—carburetor	1
	55836	GASKET SET—carburetor	1
25	55104-2	SHIELD—carburetor	1
	56533	PLUG—button	1
26	55946	GASKET—spacer-adapter	1
27	55945	STUD	2
28	55933	SPACER—reed adapter	1
29	55116	GASKET	1
30	80581	SCREW— $\frac{1}{4}$ -20 x $\frac{5}{8}$ hex. hd.	2
31	55145	CLAMP—handle	1
32	55146	CUSHION—handle	1

*For Part No., See Figure 3, Index No. 12

SUPER HOMELITE **WIZ** CHAIN SAW

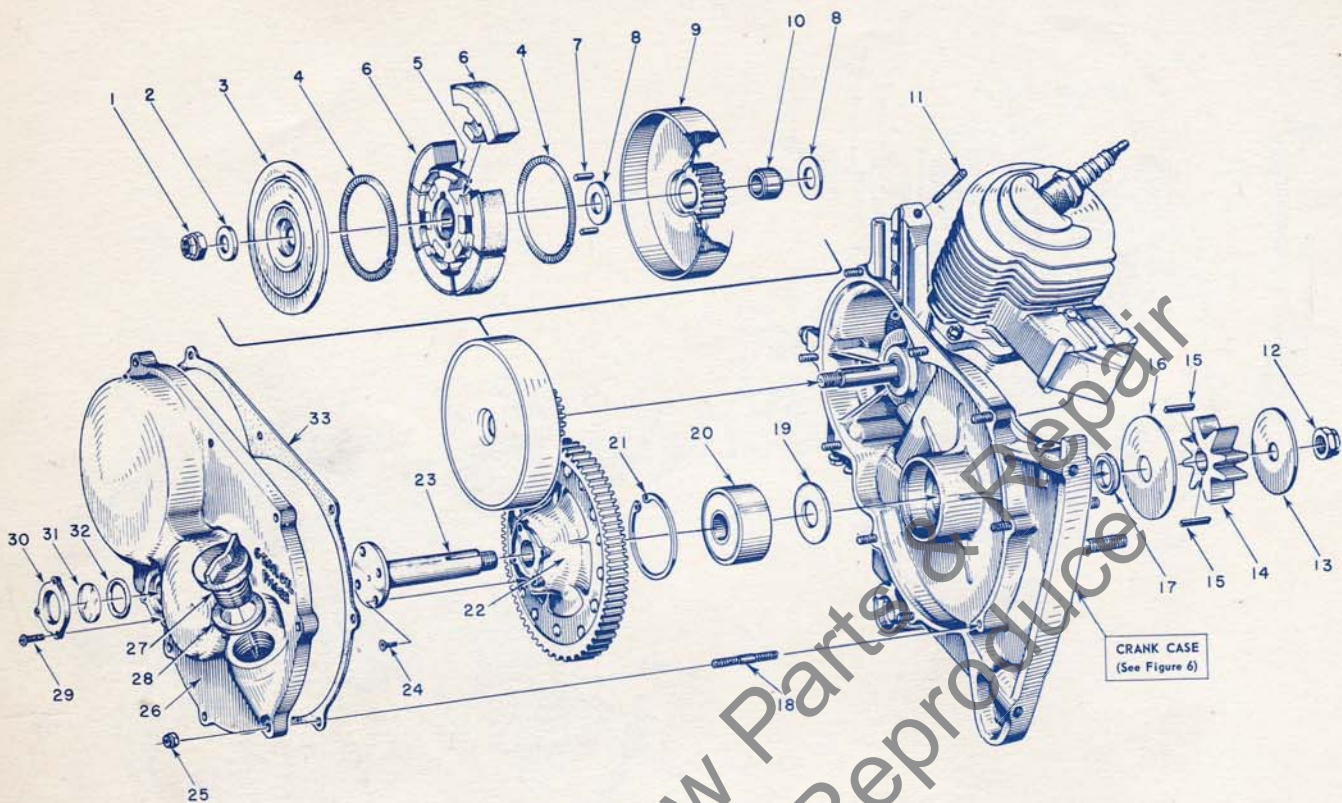


FIGURE 5 — TRANSMISSION

Index No.	Part No.	Description	No. Required	Index No.	Part No.	Description	No. Required
1	81116	NUT— $\frac{3}{8}$ -24 flex lock	1	19	56072	SEAL—formica	1
2	55036	WASHER—clutch	1	20	56219-S	BEARING—ball	1
3	55126-A	COVER—clutch	1	21	28922	RING—retaining	1
4	55123-C	SPRING	2	22	A-56824	DRIVEN GEAR	1
5	55075-3A	SPIDER	1	23	56070	SHAFT—sprocket	1
6	A-55692-A	SHOE	6	24	80651	SCREW—12-28 x $\frac{3}{8}$ flat hd., socket	4
7	55225-1A	KEY—clutch	2	25	81109	NUT—10-32	9
8	56132	WASHER—thrust	2	26	AA-55226-C	COVER—gear case	1
9	A-56849	CLUTCH DRUM (and drive gear) 21 teeth	1			Includes	
10	56133	BEARING—drive gear	1	27	A-56580	CAP—oil filler	1
11	57349	STUD	1			Includes	
12	81101	NUT— $\frac{1}{2}$ -20 flex lock	1	28	56607	GASKET—filler cap	1
13	56077	WASHER—sprocket (outer)	1	29	80548	SCREW—6-32 x $\frac{3}{8}$ binder hd.	3
14	55593-2	SPROCKET (8 tooth)	1	30	55098	PLATE—window	1
15	56076-1A	KEY—sprocket	2	31	55099	WINDOW—plastic	1
16	56074	WASHER—sprocket (inner)	1	32	55100	GASKET—"O" ring	1
17	56071	SPACER—sprocket	1	33	55053-B	GASKET—gearcase cover	1
18	57350	STUD	9				

***SPECIAL TOOLS**

Part No.	Description	No. Required	Part No.	Description	No. Required
AA-22560	MAGNETO ROTOR REMOVER ASSEMBLY	1	23391-1	ASSEMBLY TOOL—needle bearing	1
A-23131	CLUTCH SPIDER PULLER ASSEMBLY	1	23267	ANVIL—sprocket shaft assembly	1
23136	BODY—assembling fixture	1	22828	PLIERS—for Tru-arc ring (piston)	1
23232	SLEEVE (for garlock seal)	1	22726	PLIERS—for Tru-arc ring (sprocket)	1
22820-1	ADAPTER—bearing assembling	1	23234	NEEDLE BEARING TOOL (conn. rod)	1
A-23137	JACKSCREW ASSEMBLY	1	23228	PLUG—bearing assembly	1
22812-1	PLATE—shaft aligning	1	23318	SPRAY CAN—blue paint	1
23233	GARLOCK SEAL ASSEMBLY	1			

*When ordered only.

SUPER
WIZ CHAIN SAW

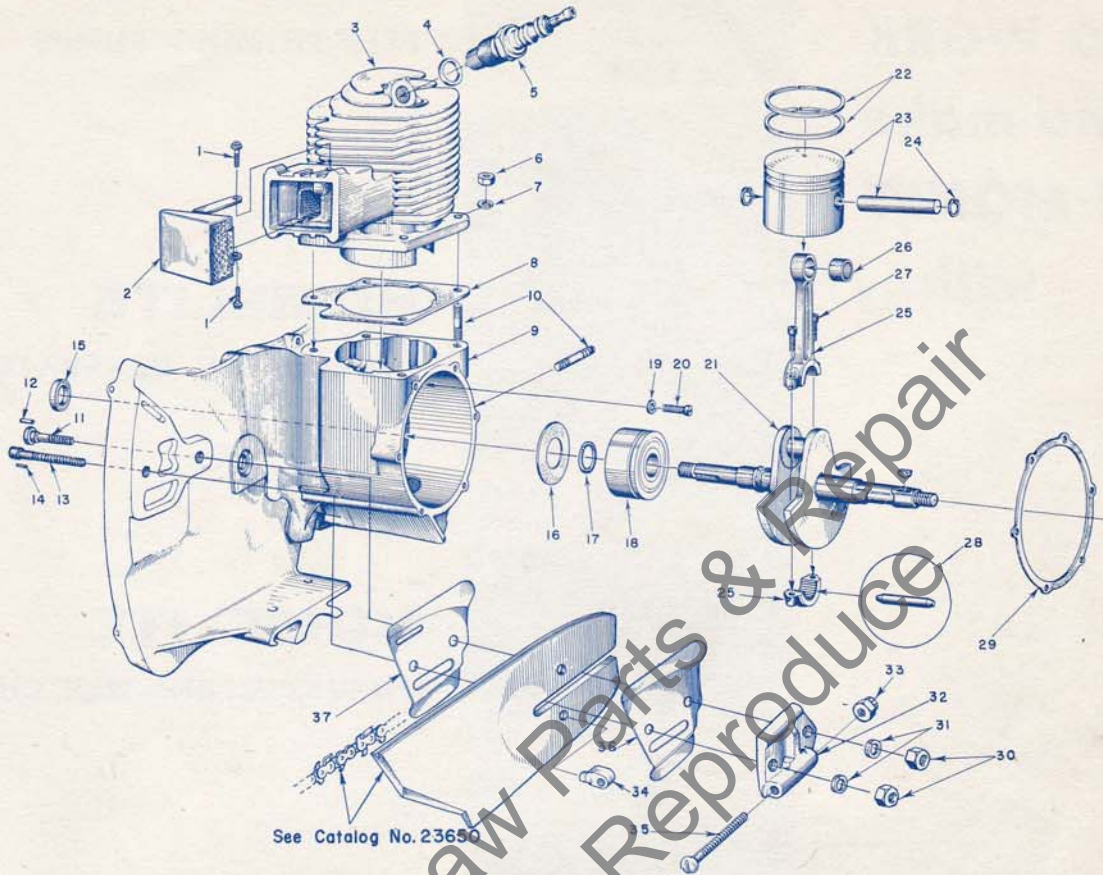


FIGURE 6 — ENGINE ASSEMBLY

Index No.	Part No.	Description	No. Required
1	80625	SCREW—10-32 x 1/2 pan hd.	2
2	A-56613-A	CAP—exhaust flange	1
3	56403	CYLINDER	1
4	25038	GASKET (included with spark plug)	1
5	40190-S	SPARK PLUG—Champion J6J	1
6	81065-2	NUT—1/4-28 hex	4
7	83009	WASHER—1/4 lock	4
8	56864	GASKET—cylinder	1
9	A-57743-A	CRANKCASE	1
		Includes	
10	55871	STUD—cylinder	6
11	58020-A	BOLT—guide bar (SEE NOTE)	1
12		PIN—bolt (SEE NOTE)	1
13	57625	BOLT—guide bar	1
14	41738	PIN—bolt	1
15	56134	SEAL—garlock	1
	57349	STUD—fuel tank (see Fig. 5 index #11)	1
	57350	STUD—cover (see Fig. 5 index #18)	9
16	55048-A	GASKET—crankcase sealing	1
17	56109	RING—retaining main (bearing)	1
18	56097-S	BEARING—main	1
19	83061	WASHER—lock, spec. thin	2

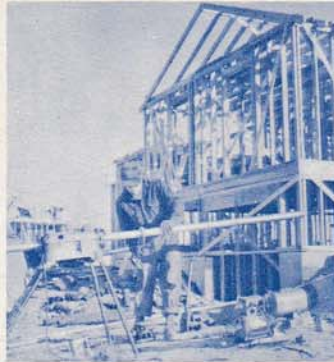
Index No.	Part No.	Description	No. Required
20	19238-A	SCREW—main bearing, retaining	2
21	58103	CRANKSHAFT	1
22	55038	RING—piston	2
23	AA-55279	PISTON and PIN	1
		Includes	
24	55095	RING—piston pin retaining	2
25	AA-55195-A	CONNECTING ROD	1
		Includes	
26	55196	BEARING—piston pin	1
27	80805	SCREW—8-32 x 3/16 allen cap	2
28	AA-55280	ROLLERS (set of 27)	1
29	55049	GASKET—back plate	1
30	81089	NUT—3/8-16 hex	2
31	83018	WASHER—3/8 lock	2
	A-55591	ADJUSTING PLATE	1
		Includes	
32	55551-B	PLATE—adjusting	1
33	81123	NUT—flex-lock	1
34	55552	PIN—guide bar adjusting	1
35	80617	SCREW—5/16-18 x 2 rd. hd.	1
36	56957-A	PLATE—guide bar (outer)	1
37	56956	PLATE—guide bar (inner)	1

PART NO. 58020-A, GUIDE BAR BOLT (serrated shoulder), REPLACES Index No. 11 AND Index No. 12.

**You'll
SPEED WORK
and make
MORE MONEY
with...**



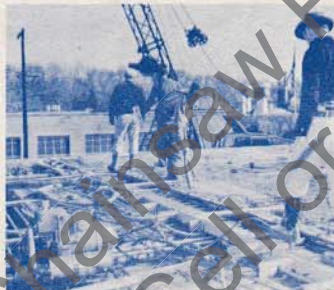
HOMELITE
SELF-PRIMING PUMPS



HOMELITE
DEPENDABLE GENERATORS



HOMELITE
POWERFUL ONE-MAN CHAIN SAWS



HOMELITE
ONE-MAN CONCRETE VIBRATORS



HOMELITE — BOSCH (Germany)
ELECTRIC BUILDER'S HAMMERS

All Powered By Famous HOMELITE Engines

Homelite's two-cycle gasoline engines are the most efficient and dependable units of their kind ever built. Their two-cycle design, developed to perfection by Homelite engineers over the past 35 years, gives maximum power for the least weight because power is produced at every piston down stroke. As an added advantage, this design requires fewer moving parts which means greater dependability and lower maintenance



Printed in United States of America
Part No. 23634

8M-5-62

HOMELITE

PORT CHESTER, N. Y.

A **textron** DIVISION

A TRUSPECTIVE Publication by
PURNELL COMPANY, INC.
Boston, Mass.