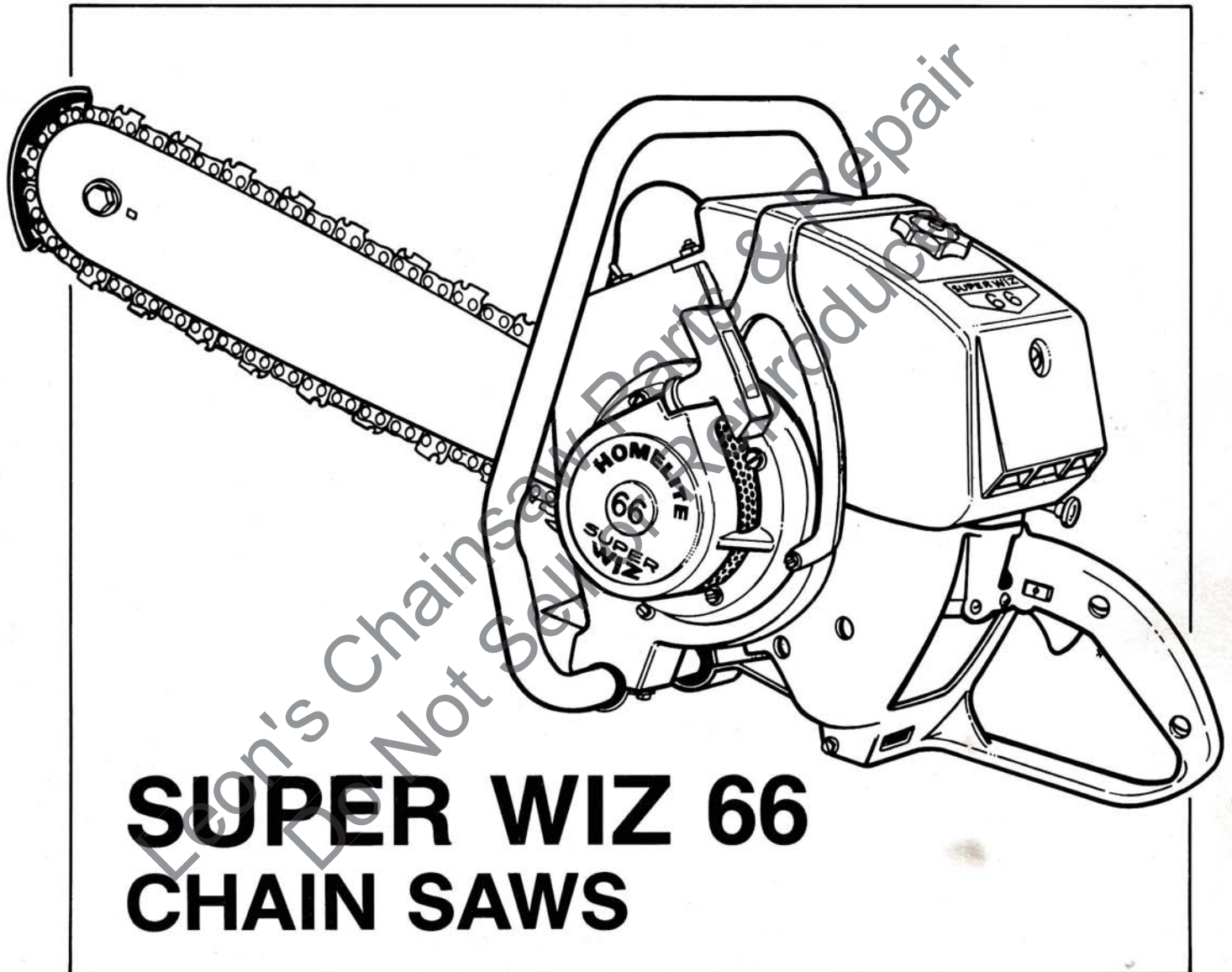


# HOMELITE® ILLUSTRATED PARTS LIST

PART NO. 17430  
PRINTED IN U.S.A.  
PRICE 35¢

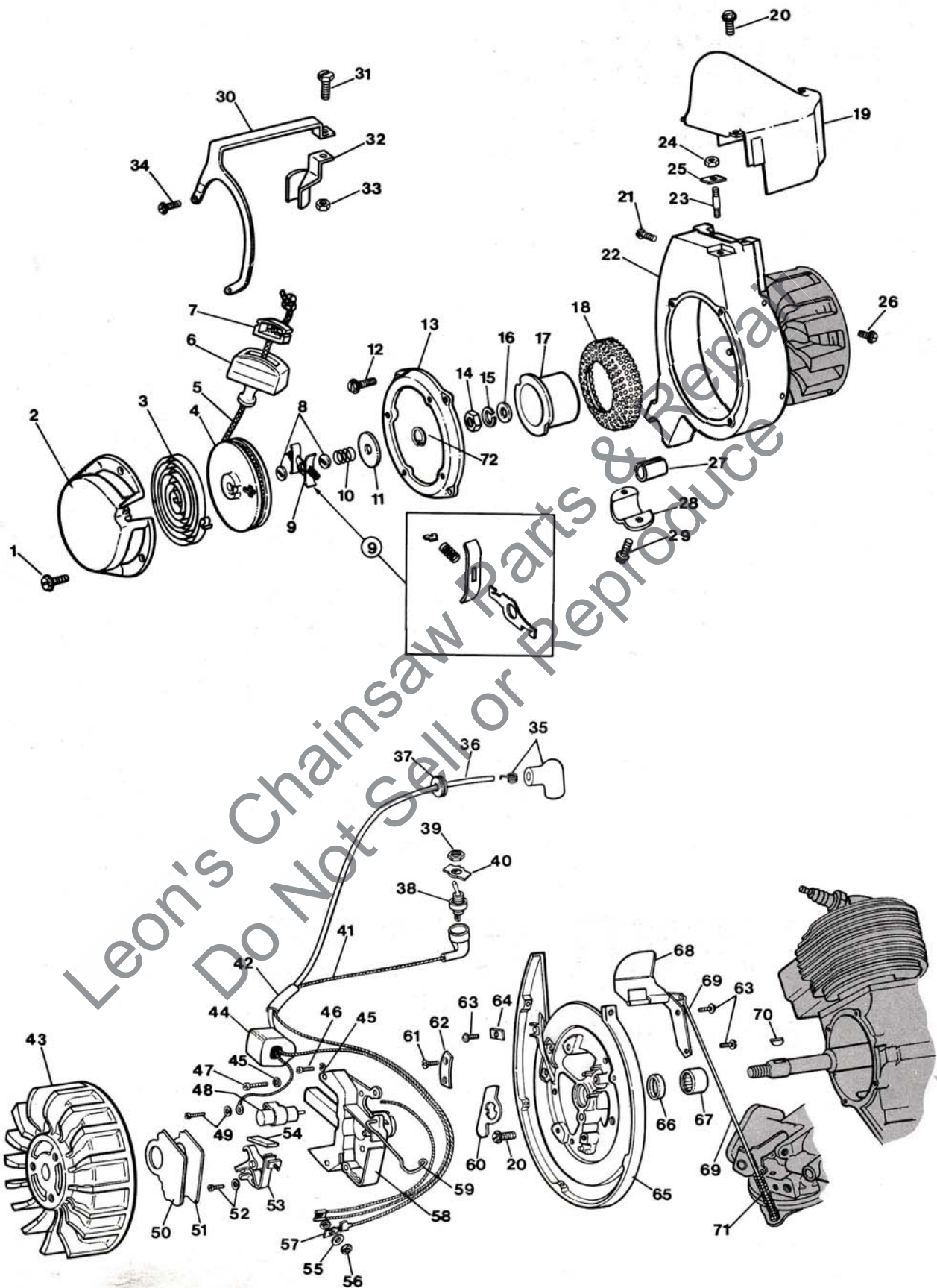


## SUPER WIZ 66 CHAIN SAWS

**HOMELITE** **TEXTRON**

Homelite Division of Textron Inc.

FIGURE 1



Leon's Chainsaw Parts & Repair  
Do Not Sell or Reproduce



NO.	DESCRIPTION	PART NO.	QTY.	NO.	DESCRIPTION	PART NO.	QTY.
1	SCREW- Hex, 1/4-20 x 5/8 Mach.	80581	4	37	GROMMET	68046	1
	STARTER- Rewind (Includes #2-11, 17 & 18)	A-56540-6A	1	38	SWITCH- Toggle	A-57650-A	1
2	COVER- Starter	A-56450-2A	1		Includes:		
3	SPRING- Rewind	56451-1	1	39	NUT- Hex	72084-A1	1
4	PULLEY- Starter	56452	1	40	PLATE- "On-Off"	70839	1
5	ROPE- Starting (58" lg.)	55898	1	41	LEAD- Ground	A-57738	1
6	GRIP- Starting w/insert	A-69962-B	1	42	SLEEVE- Insulating	55290	1
	Includes:			43	ROTOR	57579-A	1
7	INSERT- Grip	70018-A	1	44	COIL	55986-A	1
8	WASHER- Brake	58970	2	45	WASHER- Lock, #10	83046	3
9	SHOE- Friction	A-57647	1	46	SCREW- Fil., 10-24 x 1/2	80595	1
10	SPRING- Brake	56455	1	47	SCREW- Fil., 10-24 x 7/8	80660	2
11	WASHER- Retaining	76436	1	48	CONDENSER- W/terminal	55987	1
12	SCREW- Hex, 12-24 x 9/16	80899	2	49	SCREW GROUP- Condenser	57750	1
13	RING- Starter mtg	56351-8	1	50	COVER- Breaker box	55979	1
14	NUT- Jam, 7/16-20	81110	1	51	GASKET- Cover	55978-2	1
15	WASHER- Lock, 7/16	83019	1	52	SCREW GROUP- Point	57749	1
16	WASHER- Flat, 7/16	84055	1	53	POINTS- Breaker (set)	A-58165	1
17	CUP- Starter	56441-1	1		Includes:		
18	SCREEN- Air	70046	1	54	WICK- Felt	55984	1
19	SHIELD- Cylinder	A-59588-1	1	55	WASHER- Terminal	55983	1
20	SCREW- Hex, 19-32 x 9/16	80825	8	56	NUT- Terminal	55982	1
21	SCREW- Hex, 12-24 x 3/8	80837	2	57	TAB- Ground lead	57733	1
22	HOUSING- Fan	A-57542-7	1	58	BOX- Breaker w/core	57744	1
23	STUD- Fuel tank	73730	1	59	CLIP- Cover	55980	1
24	NUT- 1/4-28	81114	1	60	SEAL- Felt	56292-A	1
25	WASHER- Square	59348	1	61	SCREW- Flat, 6-32 x 5/16	80598	2
26	SCREW- Hex, 19-24 x 3/8	80869-1	1	62	CLAMP- Inner	55962	1
27	CUSHION- Handle	56281	1	63	SCREW- Pan, 8-32 x 1/4	80575	2
28	CLAMP- Handle, fan housing	56282-A	1	64	CLAMP- Outer	55161	1
29	SCREW- Hex, 12-24 x 1/2	80821	2	65	PLATE- Back	A-63179	1
30	KIT- Fuel tank bracket	A-64901	1		Includes:		
	Includes:			66	SEAL	56134	1
31	SCREW- Hex, 1/2-20 x 13/16	80573	1	67	BEARING- Needle	57533	1
32	BRACKET- Strap	63148-2	1	68	GOVERNOR	A-58222-3	1
33	NUT- Lock, 1/4-20	81204	1	69	ROD- Governor	A-63046	1
34	SCREW- Hex, 12-24 x 11/16	80751	2	70	KEY- Rotor	75078	1
35	TERMINAL- Spark plug	A-55373-A	1	71	SPRING- Governor	63047	1
36	LEAD- High tension	55235-A	1	72	RING- Retaining	67906	1

## TOOLS

COMBINATION WRENCH (Spark Plug & Guide Bar Nuts)	A-22808
PULLER (Rotor)	A-22560
BODY- Jackscrew (Main Bearing Assembly)	23136-2
SLEEVE (Crankcase Seal Protecting)	23232
COLLAR (Main Bearing Assembly)	22820-1
JACKSCREW (Main Bearing Removal)	A-23137
PLATE (To Align Crankshaft Into Crankcase)	22812-1
PLUG (To Assemble Needle Bearing To Backplate)	23391-1
PLUG (To Assemble Crankcase Seal To Backplate)	23233
PLUG (To Assemble Sprocket Shaft Bearing To Crankcase)	23228
PLIERS (Piston Snap Ring)	22828
PLIERS (Snap Ring Sprocket Shaft Bearing)	22726
WRENCH (Connecting Rod Screw)	23528
PLUG (To Assemble Connecting Rod Top Needle Bearing)	A-23809
ANVIL (To Support Gear Case When Installing Sprocket Shaft)	23267
SPANNER (To Hold Starter Cup For Assembly)	23710
WRENCH- Spanner (Clutch Removal)	A-93791

## OIL

GEAR OIL- 1 Pt. 55291-C

## PAINT

SPRAY CAN- Red 23475  
SPRAY CAN- Black 22772

## AVAILABLE:

Complete STARTER ASSEMBLY #A-56540-6A  
includes index #s 2 thru 11, plus #s 17, 18 and 72.

NO.	DESCRIPTION	PART NO.	QTY.	NO.	DESCRIPTION	PART NO.	QTY.
1	COVER- Air filter	A-57696-5	1	44	GASKET	57659	1
	Includes:			45	SPRING- Compression	63031	2
2	SCREW	57994	1	46	SCREW- Pan, 10-32 x 1-3/16	80841	2
	NUT- (Not shown)	81163	1	47	SCREW- Hex, 1/4-20 x 13/16	80573	5
3	FILTER- Air	58036	1	48	BUMPER- Spiked	55103-1	1
4	GASKET- Filter	57993	1	49	HANDLE BAR- Flush cut	A-57673-2	1
5	GASKET- Stud	57991	1		HANDLE BAR- Wrap-around	A-57671	1
6	STUD- Mounting	57996	1	50	FITTING- Elbow	31734	1
7	LINE- Fuel	70308-21	1	51	FITTING- Straight	68393	1
8	FITTING- Fuel	57652	1	52	WASHER- Lock, 5/16	83003	2
9	LINE- Fuel	55805	1	53	SCREW- Hex, 5/16-18 x 1 1/2	80087	2
10	FILTER- Fuel	A-59251	1	54	STRAP- Fuel tank	59347	1
	Includes:			55	NUT- 1/4-28	81114	3
11	FILTER	59253-1	1	56	GASKET- Reed valve	55116	1
12	CAP- Fuel	A-65741-A	1	57	SCREW- Pan, 10-32 x 3/4	80583	3
	Includes:				VALVE- Reed (complete)	A-55958-4	1
13	GASKET	65358	1		Includes:		
	VALVE- Check (Not shown)	69451	1	58	SEAT- Reed valve	55932-7	1
14	DECAL- Caution	69847	1	59	REED	55941-1	4
15	TANK- Fuel	A-65324-A	1	60	CLAMP- Reed	55942	4
	Includes:			61	SCREW- Pan, 4-40 x 3/16	80658	8
	PIN- Cotter (Not shown)	86301	1	62	WASHER- Lock, 1/4	83009	2
16	GASKET- Fuel tank	67749	1	63	NUT- 1/4-20	81013	2
17	COVER- Fuel tank	57595-3A	1	64	ROD- Throttle	A-55954	1
18	SCREW- Fil., 8-32 x 3/4	82156	1		Includes:		
19	GROMMET	64473	2	65	SLEEVE- Throttle	63024	1
20	SCREW- Pan, 8-32 x 5/8	82177	1	66	SPRING- Throttle rod	55045-A	1
21	SCREW- Fil, 8-32 x 1-7/16	82187	7	67	TRIGGER- Throttle	A-55207	1
22	SCREW- Fil, 8-32 x 5/8	82146	3		Includes:		
23	SCREW- Shoulder	64133-A	1		PIN- Spring	57721	1
24	CAP- Oil	A-63717-C	1	68	HANDLE- Throttle w/pin	A-63178	1
	Includes:				Includes:		
25	GASKET	56607	1		PAD- Felt (Not shown)	55372	1
26	LINE- Oil	A-55191	1	69	SCREW- Hex, 12-24 x 1/2	80821	2
27	VALVE- Check	A-59456-A	1	70	COVER- Handle	A-55228-1	1
28	FILTER- Oil	A-59009-A	1		Includes:		
29	LINE- Oil filter	59000	1		LOCK- Throttle (Not shown)	A-55282	1
30	GASKET- Seat	55110	1	71	SPRING	72970	1
31	SEAT- Check valve	59450	1	72	SCREW- Pan, 8-32 x 1/2	80560	4
32	GASKET	55107	1	73	SHIELD- Carburetor	55104-9	1
33	CAP- Check valve	A-55167	1	74	CARBURETOR- (See Note 1)	A-58102	1
34	SPRING- Valve	59022	1		Includes:		
35	BALL- Check	25527	1	75	BRACKET- Spring	63048	1
36	SPRING	59293	1	76	GASKET	63655-A	1
37	PLUNGER- Oil	A-57834-10	1	77	GASKET	55946	1
	Includes:			78	STUD	55945	2
38	"O" RING	74388	1	79	SPACER- Reed valve	55933-1	1
39	"O" RING	59074	1	80	BRACE	58549-A	1
40	BUTTON	57289-1	1	81	CUSHION- Handle	55146	1
41	SCREW- Hex, 12-24 x 5/8	80676	4	82	SCREW- Hex, 1/4-20 x 5/8	80581	4
42	ELBOW- Air	57618-5	1		STRAP- reinforcing (Not shown)	68035	1
43	GASKET	72971-2	1				

**NOTE 1-** Service replacement CARBURETOR #A-58102 (HL-117C) supplied with #56175. Throttle friction spring installed, and #75756 throttle opening spring packaged with assembly. On WIZ "66" models use carburetor as supplied, discard #75756 spring.



FIGURE 2

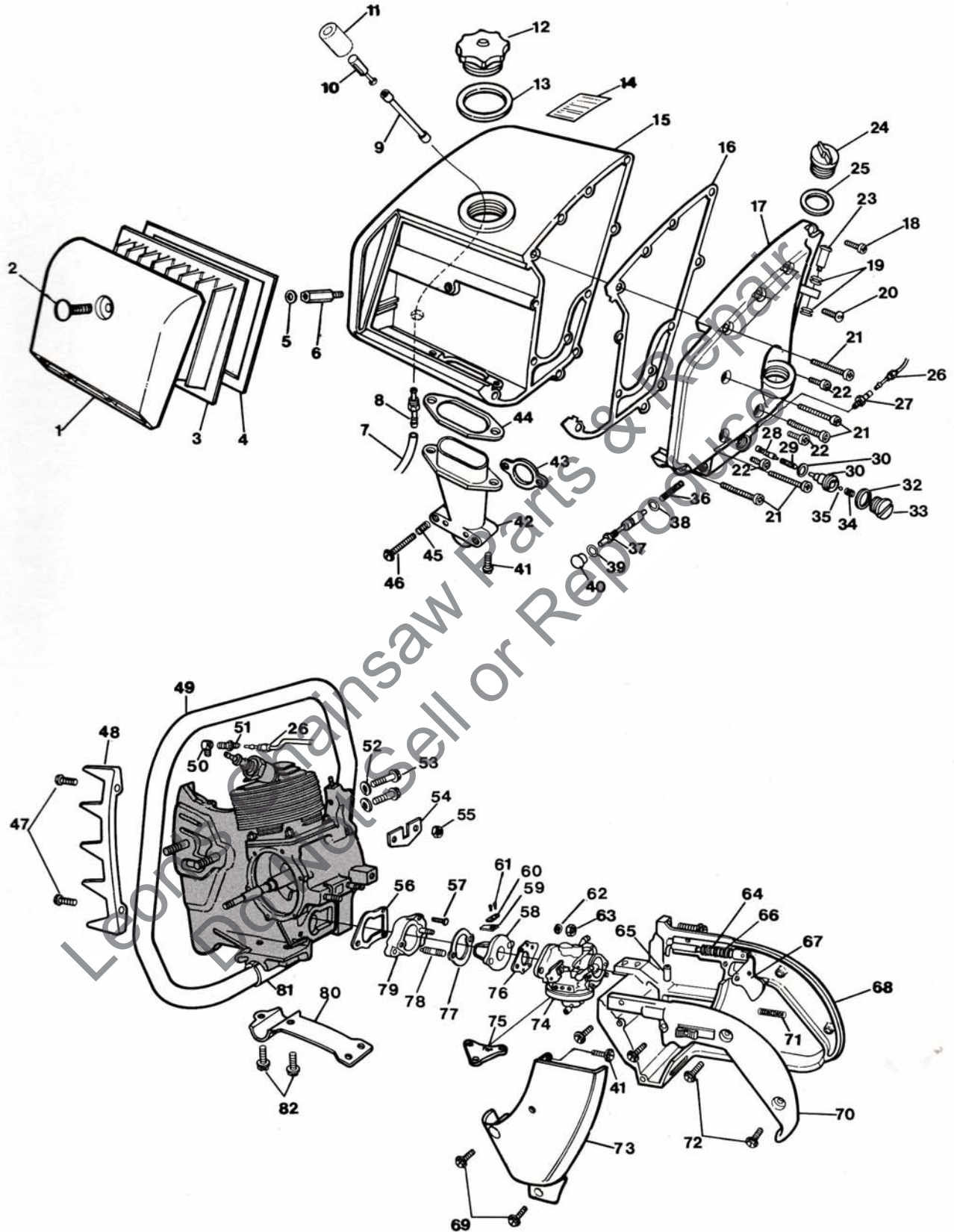
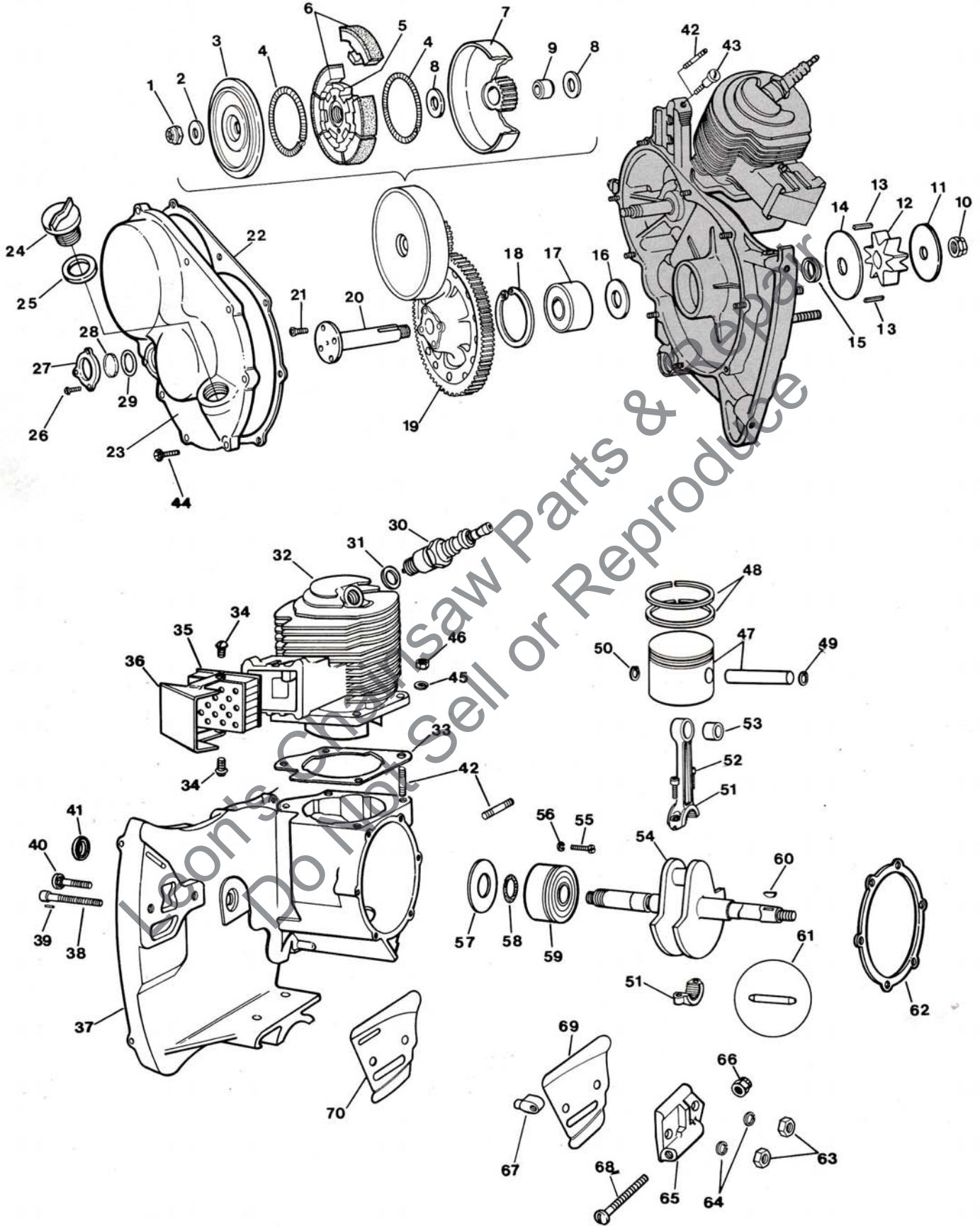


FIGURE 3





NO.	DESCRIPTION	PART NO.	QTY.	NO.	DESCRIPTION	PART NO.	QTY.
1	NUT- 3/8-24	81192	1	30	SPARK PLUG	40190-S	1
2	WASHER- Clutch	55036	1		Includes:		
3	COVER- Clutch	55126-A	1	31	GASKET	25038	1
	Heavy duty, (See Note 1)	*58023-A	1	32	CYLINDER	A-69717-A	1
4	SPRING- Clutch	55123-C	2		Includes:		
5	SPIDER- Clutch	58546-3A	1	33	GASKET- Cylinder	56864	1
	Heavy duty, (See Note 1)	*58547-2A	1	34	SCREW- Hex, 10-24 x 3/8	80869-1	2
6	SHOE- Clutch	A-55692-A	6	35	MUFFLER	A-56068-A	1
	Heavy duty, (See Note 1)	*A-58028	6	36	CAP- Muffler, (See Note 3)	56396	1
7	GEAR- Drive w/drum			37	CRANKCASE	A-64902-A	1
	3.57:1 ratio, 21 teeth	A-64286-A	1		Includes:		
	Includes:				GROMMET- (Not shown)	64473	2
8	WASHER- Thrust	64282	2	38	BOLT- Guide bar	57625	1
	2.84:1 ratio, 25 teeth	*A-56515	1	39	PIN- Bolt	41738	1
	2:1 ratio, 32 teeth	*A-56158	1	40	BOLT- Guide bar	58020-A	1
	Heavy duty, (See Note 1)			41	SEAL	56134	1
	3.57:1 ratio, 21 teeth	*A-64287-A	1	42	STUD	55871	6
	Includes:			43	SCREW- Shoulder	64133-A	1
8	WASHER- Thrust	*64282	2	44	SCREW- Hex 12-24 x 3/4	80867	9
	2.84:1 ratio, 25 teeth	*A-58259	1	45	WASHER- Lock, 1/4	83009	4
	2:1 ratio, 32 teeth	*A-58460	1	46	NUT- 1/4-28	81065-2	4
9	BEARING- Drive gear	56133	1	47	PISTON & PIN	A-55279-B	1
10	NUT- Lock, 1/2-20	81101	1		Includes:		
11	WASHER- Sprocket (Outer)	56077	1	48	PISTON RING	55038	2
12	SPROCKET- (See Note 2)			49	RING- Retaining	64742	1
	.404P, 8 tooth (std.)	70353	1	50	RING- Retaining	55095	1
	1/2" pitch, 8 tooth	55593-3	1	51	ROD- Connecting	A-59483-1A	1
	7/16" pitch, 7 tooth	63263	1		Includes:		
13	KEY- Sprocket	56076-1A	2	52	SCREW- 8-32 x 9/16	69919	2
14	WASHER- Sprocket (Inner)	56074	1	53	BEARING- Needle	69638	1
15	SPACER- Sprocket	56071	1	54	CRANKSHAFT	58895	1
16	SEAL- Formica	56072	1	55	SCREW- Bearing retaining	19238-A	2
17	BEARING- Ball	56219-S	1	56	WASHER- Lock, (thin)	83061	2
18	RING- Retaining	28922	1	57	GASKET- Sealing	55048-A	1
19	GEAR- Driven			58	RING- Retaining	56109	1
	3.57:1 ratio, 75 teeth (Std.)	A-56824-A	1	59	BEARING- Main	56097-S	1
	2.84:1 ratio, 71 teeth (Opt.)	A-56516-A	1	60	KEY- Rotor	75078	1
20	SHAFT- Sprocket	56070-A	1	61	ROLLERS- Needle (Set of 27)	A-69060	1
21	SCREW- Flat, 12-28 x 3/8	62289	4	62	GASKET- Back plate	55049	1
22	GASKET- Drivcase cover	55053-B	1	63	NUT- 3/8-16	81089-2	2
23	COVER- Drivcase	A-55226-C4	1	64	WASHER- Lock, 3/8	83018	2
	Includes:				PLATE- Adjusting	A-55591	1
24	CAP- Filler	A-63717-C	1		Includes:		
	Includes:			65	PLATE (Complete)	55551-2	1
25	GASKET	56607	1	66	NUT- 5/16-18 hex	81235	1
	VALVE- Check (Not shown)	63718	1	67	PIN- Adjusting	55552-1	1
26	SCREW- 6-32 x 3/8	80548	3	68	SCREW- Rd. 5/16-18 x 2-1/2	82219	1
27	RING	55098	1	69	PLATE- Guide bar (Outer)	56957-B	1
28	WINDOW	55099	1	70	PLATE- Guide bar (Inner)	56956-A	1
29	"O" RING	55100	1				

**NOTE 1-** Measure width of clutch shoe to determine type of clutch assembly in unit; 5/8" shoe requires standard type mating parts, 3/4" shoe requires heavy duty replacement parts.

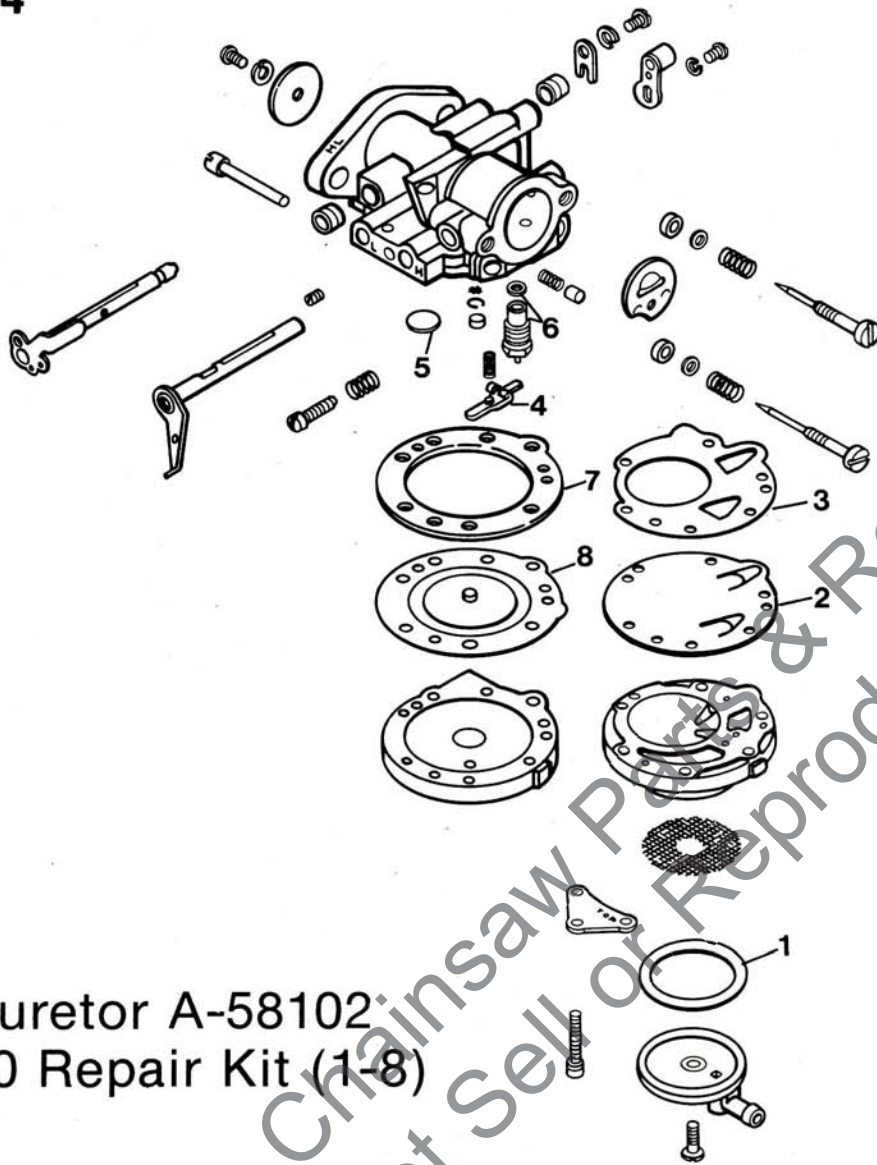
**NOTE 2-** Check number of teeth before ordering replacement.

**NOTE 3-** NOISE SUPPRESSOR ASSEMBLY #A-56558 available from your HOMELITE Dealer, use in place of #56396 Cap.

## ACCESSORIES

DESCRIPTION	PART NO.	QTY.
HANDLE HELPER	A-67757	1
Includes:		
NUT	67760	1
PLUG	67759	2
KNOB	A-67763	1
SPARK ARRESTOR KIT	A-93901-A	1
CAP- Noise suppressor	A-56558	1
Includes:		
CAP	56396	1

**FIGURE 4**



Carburetor A-58102  
95700 Repair Kit (1-8)

Leon's Chainsaw Parts & Repair  
Do Not Sell or Reproduce

0085YY

**HOMELITE** **TEXTRON**

Homelite Division of Textron Inc.