

HOMELITE

Chain Saws



PARTS LIST

HOMELITE SUPER WIZ 66 - WIZ 55 CHAIN SAWS & SUPER WIZ 55

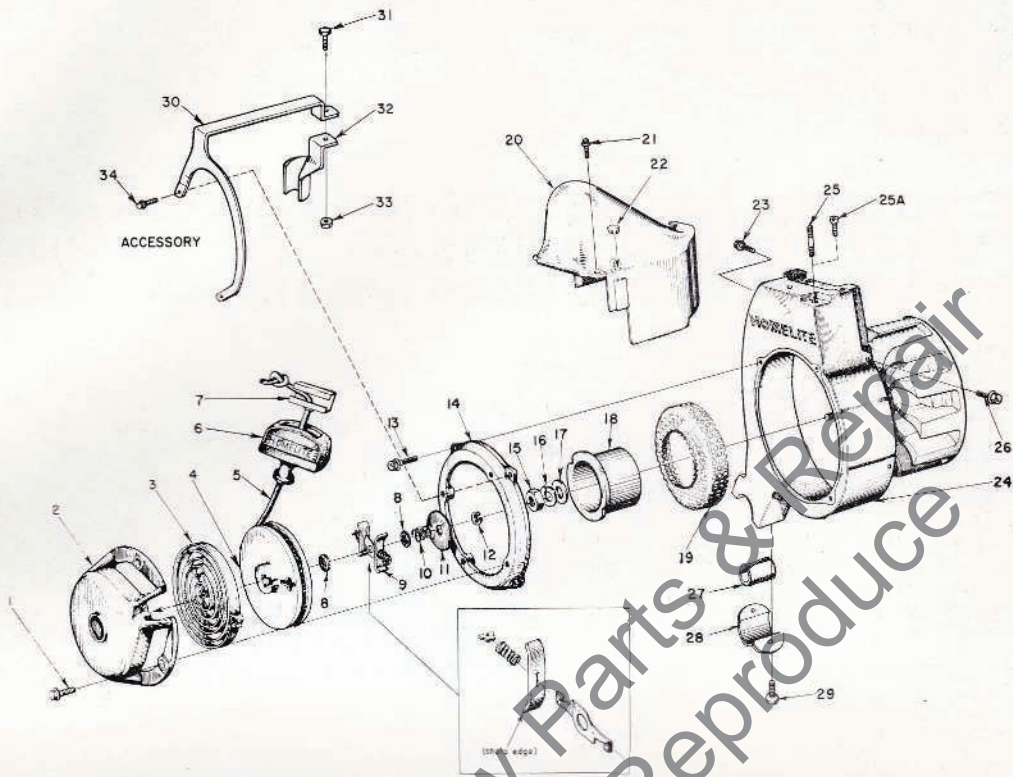


FIGURE 1

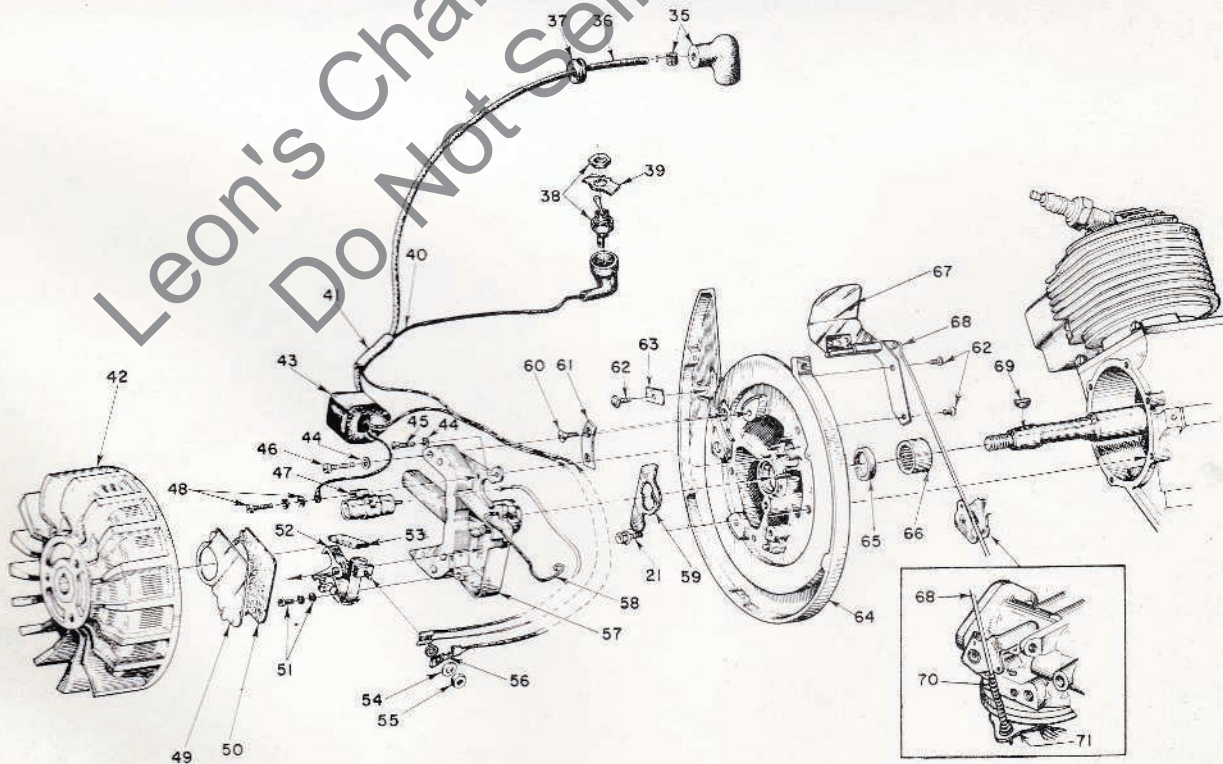


FIGURE 2

ALWAYS FURNISH SAW MODEL AND SERIAL NUMBER WHEN ORDERING PARTS.

HOMELITE SUPER WIZ 66 - WIZ 55 CHAIN SAWS & SUPER WIZ 55

Parts used in each model are indicated by an asterisk (*) in the corresponding model column; a dagger (†) indicates an optional part available from your dealer.

No.	Description	Part No.	SUPER & Wiz Wiz			No.	Description	Part No.	SUPER & Wiz Wiz		
			66	55	Qty.				66	55	Qty.
1	SCREW - hex, 1/4-20 x 1/2	80681	*	*	4	35	TERMINAL - spark plug	A-55373-A	*	*	1
2	COVER - starter	A-56450-2A	*	*	1	36	LEAD - high tension	55235-A	*	*	1
3	SPRING - rewind	56451-1	*	*	1	37	GROMMET	60929	*	*	1
4	PULLEY - starter	56452	*	*	1	38	SWITCH - toggle	A-57716	*	*	1
5	ROPE - starting	55898	*	*	1	39	Includes: PLATE - "ON - OFF"	55879	*	*	1
6	GRIP - starting	55937	*	*	1	40	LEAD - ground	A-57738	*	*	1
7	INSERT - grip	58517	*	*	1	41	SLEEVE - insulating	55290	*	*	1
8	WASHER - brake	58970	*	*	2	42	ROTOR	57579-A	*	*	1
9	SHOE - friction	A-57647	*	*	1	43	COIL	55986-A	*	*	1
10	SPRING - brake	56455	*	*	1	44	WASHER - lock, #10	83046	*	*	3
11	WASHER - retaining	76436	*	*	1	45	SCREW - fil., 10-24 x 1/2	80595	*	*	1
12	RING - retaining	90618	*	*	1	46	SCREW - fil., 10-24 x 7/8	80660	*	*	2
13	SCREW - hex, 12-24 x 9/16	80899	*	*	2	47	CONDENSER - w/terminal	55987	*	*	1
14	RING - starter mtg.	56531-6	*	*	1	48	SCREW GROUP - condenser	57750	*	*	1
15	NUT - jam 7/16-20	81110	*	*	1	49	COVER - breaker box	55979	*	*	1
16	WASHER - lock, 7/16	83019	*	*	1	50	GASKET - cover	55978-2	*	*	1
17	WASHER - flat, 7/16	84055	*	*	1	51	SCREW GROUP - point	57749	*	*	1
18	CUP - starter	56441-1	*	*	1	52	POINTS - breaker (set)	A-58165	*	*	1
19	SCREEN - air	56442	*	*	1	53	Includes: WICK - felt	55984	*	*	1
20	SHIELD - cylinder	A-59588-1	*	*	1	54	WASHER - terminal	55983	*	*	1
21	SCREW - hex, 10-32 x 9/16	80825	*	*	8	55	NUT - terminal	55982	*	*	1
22	PLUG - button	32814	*	*	1	56	TAB - ground lead	57733	*	*	1
23	SCREW - hex, 12-24 x 3/8	80837	*	*	2	57	BOX - breaker w/core	57744	*	*	1
24	HOUSING - fan	A-57542-5	*	*	1	58	CLIP - cover	55980	*	*	1
25	STUD - fuel tank	73730	*	*	1	59	SEAL - felt	56292-A	*	*	1
25A	SCREW - fil., 1/4-20 x 1/4	80325-2	*	*	1	60	SCREW - flat, 6-32 x 5/16	80598	*	*	2
26	SCREW - hex, 10-24 x 3/8	80869-1	*	*	1	61	CLAMP - inner	55962	*	*	1
27	CUSHION - handle	56281	*	*	1	62	SCREW - pan, 8-32 x 1/4	80575	*	*	3
28	CLAMP - handle, fan housing	56282-A	*	*	1	63	CLAMP - outer	55161	*	*	1
29	SCREW - hex, 12-24 x 1/2	80821	*	*	2	64	PLATE - back	A-63179	*	*	1
*30	KIT - fuel tank bracket	A-04901	*	*	1	65	Includes: SEAL	56134	*	*	1
*	KIT - fuel tank bracket	A-04846	*	*	1	66	BEARING - needle	57533	*	*	1
	STRAP - reinforcing included in kit					67	GOVERNOR	A-58222-3	*	*	1
	Includes: SCREW - hex, 1/4-20 x 13/16	80573	*	*	1	68	ROD - governor	A-63046	*	*	1
*32	BRACKET - strap	63148-1	*	*	1	69	KEY - rotor	75078	*	*	1
*	BRACKET - strap	63181-1	*	*	1	70	SPRING - governor	63047	*	*	1
33	NUT - lock, 1/4-20	81108	*	*	1	71	BRACKET - governor spring	63048	*	*	1
34	SCREW - hex, 12-24 x 11/16	80751	*	*	2						

* Denotes new parts

† Part number change-no physical change.

AVAILABLE: Complete STARTER ASSEMBLY #A-56540-6, includes index #2 thru #12, #18 and #19.

TOOLS

Part No.	Description	Part No.	Description
* A-22808	COMBINATION WRENCH	23233	PLUG - back plate, crankcase seal
AA-22560	REMOVER - rotor	23228	PLUG - sprocket shaft bearing
A-23696	REMOVER - threaded spider	22828	PLIERS - piston snap ring
23136	BODY - jackscrew	22726	PLIERS - snap ring
23232	SLEEVE - crankcase seal	23528	WRENCH - socket screw (conn. rod)
22820-1	COLLAR - main bearing	A-23809	PLUG - conn. rod needle bearing
A-23137	JACKSCREW	23267	ANVIL - sprocket shaft
22812-1	PLATE - shaft aligning	23710	SPANNER - starter cup
23391-1	PLUG - back plate needle bearing		

OIL

#55291-B GEAR OIL - 1 pt.

PAINT

#23318 SPRAY CAN - blue

DECAL

#23742 (universal replacement) composed of "DIRECT DRIVE", "GEAR DRIVE", "STARTING INSTRUCTIONS", and two "HOMELITE" (letters 1/4" and 1/2" high).

ALWAYS FURNISH SAW MODEL AND SERIAL NUMBER WHEN ORDERING PARTS.

HOMELITE SUPER WIZ 66 - WIZ 55 CHAIN SAWS & SUPER WIZ 55

Parts used in each model are indicated by an asterisk (*) in the corresponding model column; a dagger (†) indicates an optional part available from your dealer.

No.	Description	Part No.	SUPER & Wiz Wiz		Qty.	No.	Description	Part No.	SUPER & Wiz Wiz		Qty.
			66	55					66	55	
1	COVER - air filter	A-57696-A	*		1	*39A	ELBOW - air - See NOTE 3	55019-13	*		1
2	Includes: SCREW	57994	*		1	40	GASKET	57659	*		1
	NUT - retainer (not shown)	81163	*		1	40A	GASKET	55059	*		1
†1A	CAP - air filter	55066-2		*	1	41	SCREW - hex, 12-24 x 5/8	80676	*	*	4
2A	SCREW - pan, 6-32 x 1/2	80630		*	2	42	SPRING - compression	63031	*	*	2
3	FILTER - air	58036	*		1	43	SCREW - pan, 10-32 x 1 3/16	80841	*		2
3A	FILTER - air	57172-B		*	1	43A	SCREW - pan, 10-32 x 1 - See NOTE 3	80624	*		2
4	GASKET - filter	57993	*		1	†44	BUMPER - spiked	55103-1	*	*	1
4A	GASKET - filter	57173	*		1	45	SCREW - hex, 1/4-20 x 13/16	80573	*	*	5
5	GASKET - stud	57991	*		1	46	HANDLE BAR - flush cut	A-57673	*	*	1
6	STUD - mounting	57996	*		1		wrap-around w/#80308 screw	A-57671	†	†	1
7	LINE - fuel	55680	*		1	47	FITTING - elbow	31734	*	*	1
7A	LINE - fuel w/spring	A-56379		*	1	48	FITTING - straight	31733-1	*	*	1
8	FITTING - fuel	57652	*		1	49	WASHER - lock, 5/16	83003	*	*	2
8A	FITTING - fuel elbow	74917	*		1	50	SCREW - hex, 5/16 - 18 x 1 1/2	80087	*	*	2
9	LINE - fuel	55805	*		1	51	STRAP - fuel tank	59347	*	*	1
9A	LINE - fuel	72107-A		*	1	52	SCREW - pan, 10-32 x 3/4	80583	*	*	3
10	FILTER - fuel	A-59251	*	*	1	53	VALVE - reed w/studs - See NOTE 3	A-55800-A	*	*	1
11	Includes: FILTER	59253	*	*	1		VALVE - reed	A-55958-4	*	*	1
*12	TANK - fuel See NOTE 4	A-65324	*		1	*53A	Includes: SEAT - reed valve	55932-7	*	*	1
†12A	TANK - fuel	A-55568-2		*	1	54	REED	55941-1	*	*	4
*13	CAP - fuel	A-64140-1	*	*	1	55	CLAMP - reed	55942	*	*	4
*14	Includes: GASKET	65358	*	*	1	56	SCREW - pan, 4-40 x 3/16	80658	*	*	8
15	DECAL	64144	*	*	1	57	WASHER - lock, 1/4	83009	*	*	2
16	NUT - 1/4-28 - See NOTE 4	81114	*	*	3	58	NUT - 1/4-20	81013-1	*	*	2
16A	SCREW - shoulder	64133-A	*		1	59	SLEEVE - rod	63024	*	*	1
17	WASHER - square - See NOTE 4	59348	*	*	1	60	HANDLE - throttle w/pin	A-63178	*	*	1
*17A	GROMMET - part of Index #12	64473	*	*	2		Includes: PAD - felt	55372	*	*	1
*18	CAP - oil	A-64310	*	*	1	61	ROD - throttle	A-55954	*	*	1
19	Includes: GASKET	56607	*	*	1	62	Includes: SPRING	55045-A	*	*	1
20	LINE - oil	AA-55191	*	*	1	63	TRIGGER - throttle	AA-55207	*	*	1
21	VALVE - check	A-59456-A	*	*	1	64	SCREW - pan, 8-32 x 1/2	80560	*	*	4
22	FILTER - oil	A-59449	*	*	1	65	COVER - handle	AA-55228	*	*	1
23	LINE - oil filter	59000	*	*	1		Includes: LOCK - throttle	AA-55282	*	*	1
24	GASKET	55110	*		1	66	SPRING	72970	*	*	1
25	SEAT - check valve	59450	*		1	67	SCREW - hex, 12-24 x 1/2	80821	*	*	2
26	BALL - check	25527	*	*	1	†68	SHIELD - carburetor, NOTE 1	55104-9	*	*	1
27	SPRING - valve	59022	*	*	1	69	CARBURETOR - See NOTE 2	A-58102	*	*	1
28	GASKET	55107	*	*	1	70	GASKET	55553-3	*	*	1
29	CAP - check valve	AA-55147	*	*	1	71	BRACKET - spring	63048	*	*	1
30	GASKET	72174	*	*	1	72	GASKET	55946	*	*	1
31	FITTING - fuel	AA-72475	*	*	1	73	Part of index #53 - See NOTE 3	27464	*	*	2
32	SCREW - flat, 6-32 x 3/8	80451	*	*	4	73A	STUD	55945	*	*	2
33	SPRING	59293	*	*	1	†74	SPACER - reed valve	55933-I	*	*	1
34	PLUNGER - oil	A-57834-10	*	*	1	75	GASKET	55116	*	*	1
35	Includes: "O" RING	74385	*	*	1	76	BRACE	58549-A	*	*	1
36	"O" RING	59074	*	*	1	77	CUSHION - handle	55146	*	*	1
37	BUTTON	57259-1	*	*	1	78	SCREW - hex, 1/4-20 x 5/8	80581	*	*	4
38	GASKET	72971-2	*	*	1	79	ROD - throttle	63577	*	*	1
†39	ELBOW - air	57618-4	*	*	1	80	PIN - spring	63579	*	*	1
						81	SPRING - throttle	63578	*	*	1

* Denotes new parts.

† Part number change - no physical change

NOTE 1 - Service replacement SHIELD #55104-4A does not have hole for large PLUG (button) #56533, used in early WIZ "55" only; not required in later models.

NOTE 2 - Service replacement CARBURETOR #A-58102 (HL-117C) supplied with #56175 throttle friction spring installed, and #75756 throttle opening spring packaged with assembly.

On WIZ "66" models use carburetor as supplied, discard #75756 spring.

On WIZ "55" models equipped with index #71, #79, #80, and #81 use carburetor as supplied, discard #75756 spring.

On WIZ "55" models (originally equipped with HL-46B or HL-204A carburetors) remove and discard #56175 spring, thread #75756 spring onto other end of throttle shaft (an anchor pin is provided); loosen turret screw, turn inlet position 180°, tighten screw.

Use Repair Parts Kit #57987, Gasket Set #57919 for HL-117C and HL-204A models; refer to #23621 Carburetor Sheet.

NOTE 3 - For units below serial number 2537289 use #55019-11 Elbow, #80638 Screw, #A-55800-A Valve, and #27464 Stud.

NOTE 4 - Service replacement crankcase A-64902 and fuel tank A-65324 requires two (2) grommets #64473 (supplied with A-65324 tank) and one (1) shoulder screw #64133-A. When using new tank A-65324 and old crankcase A-63177-A (with 1/4" stud) use only one (1) grommet on top of mounting tab and fasten with a square washer and lock nut. If the new crankcase A-64902 is used with the old tank you should drill out the hole in the crankcase mounting tab to a 3/8" diameter, insert grommets #64473 on both sides and fasten with shoulder screw #64133-A.

The above drilling and fastening methods can also be used on WIZ "55" with the new crankcase A-64902.

HOMELITE SUPER WIZ 66 - WIZ 55 CHAIN SAWS & SUPER WIZ 55

WIZ '66' BELOW SERIAL
NO. 2611989



USE
HOMELITE CEMENT
NO. 22788

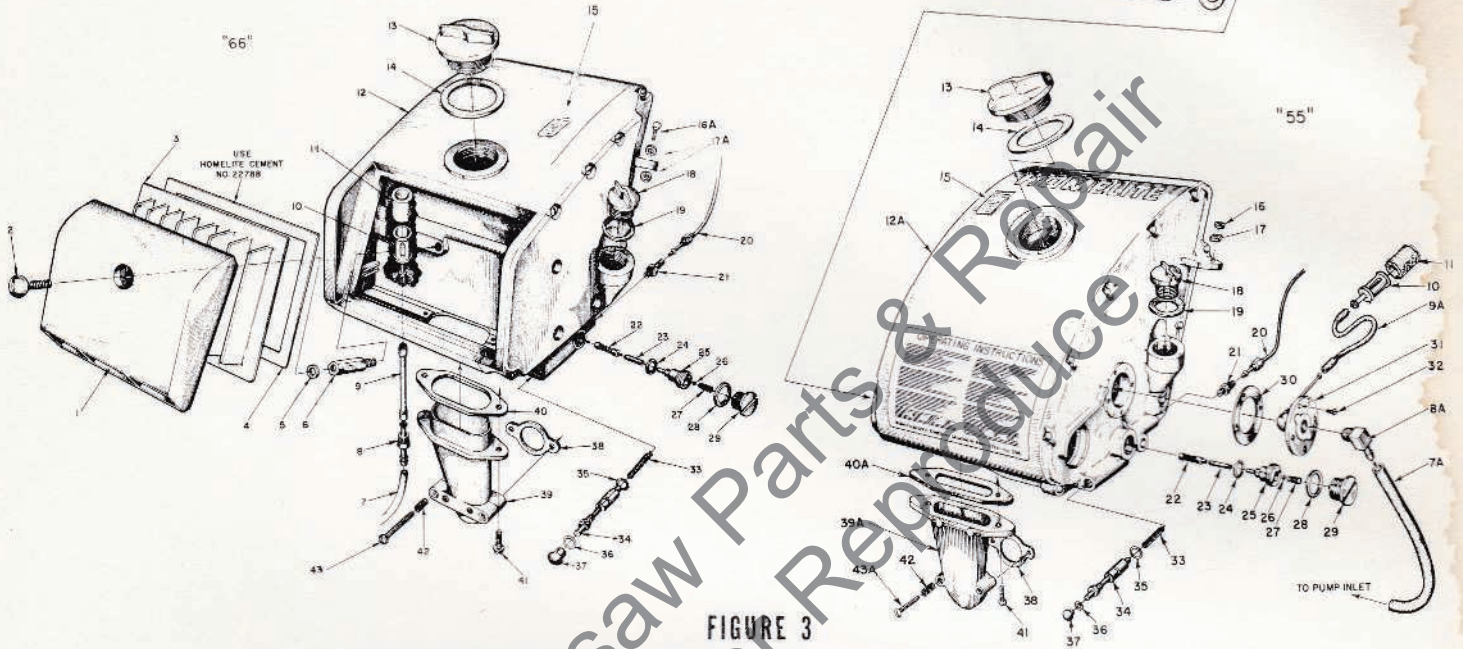
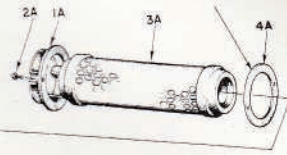


FIGURE 3

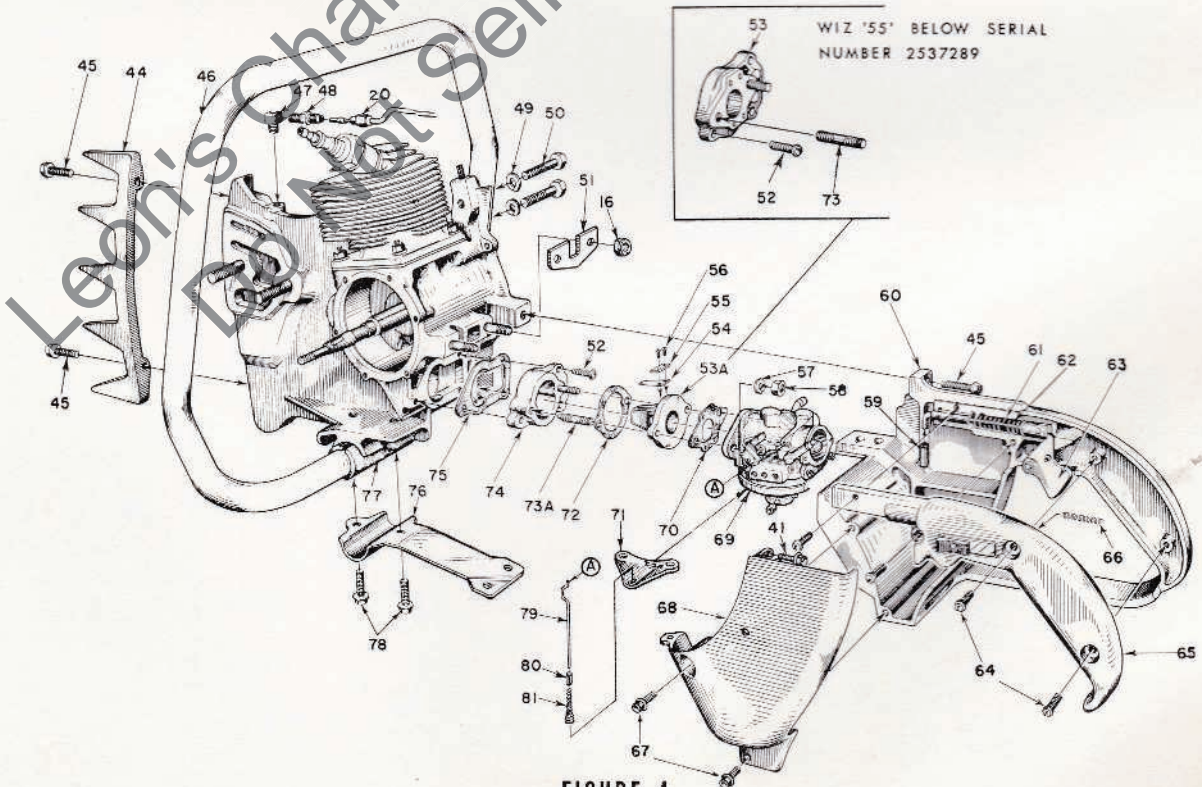


FIGURE 4

ALWAYS FURNISH SAW MODEL AND SERIAL NUMBER WHEN ORDERING PARTS.

HOMELITE SUPER WIZ 66 - WIZ 55 CHAIN SAWS & SUPER WIZ 55

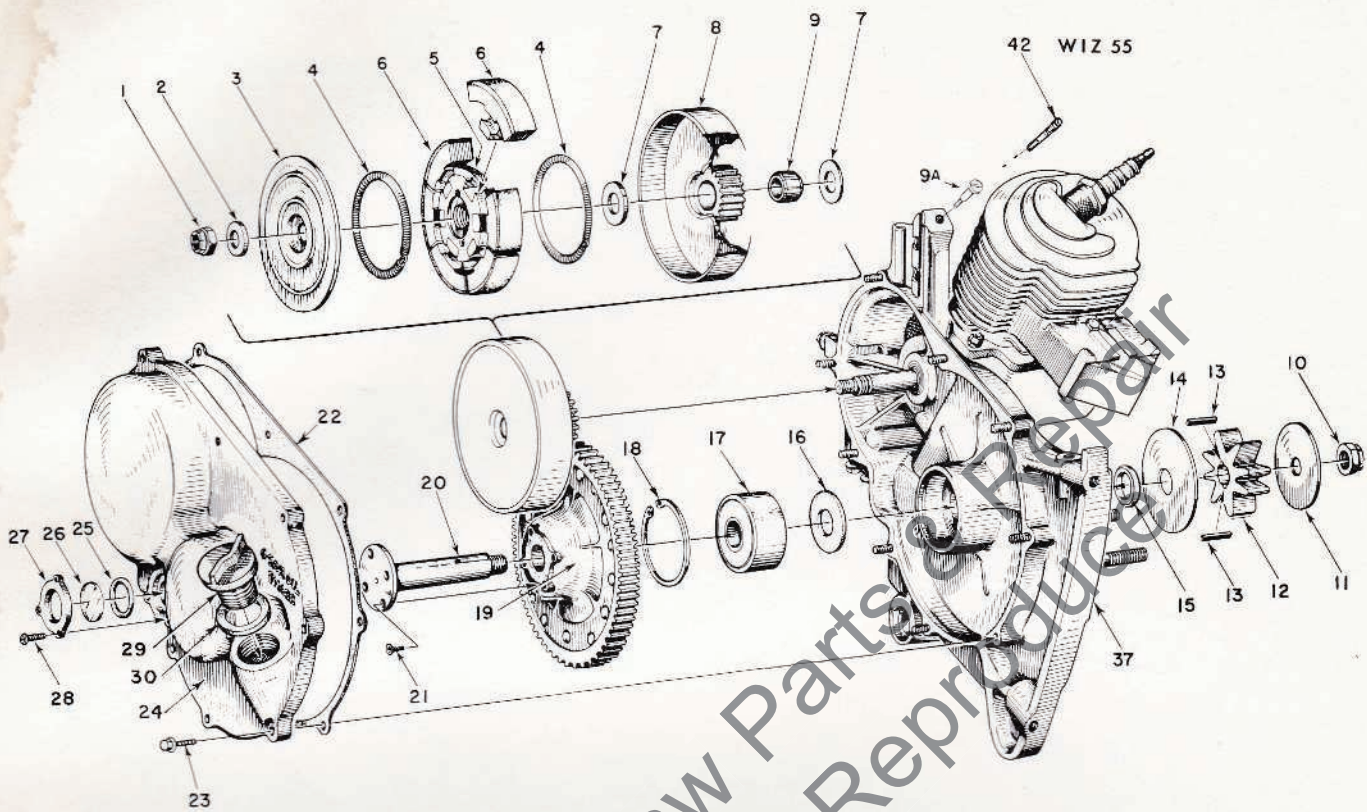


FIGURE 5

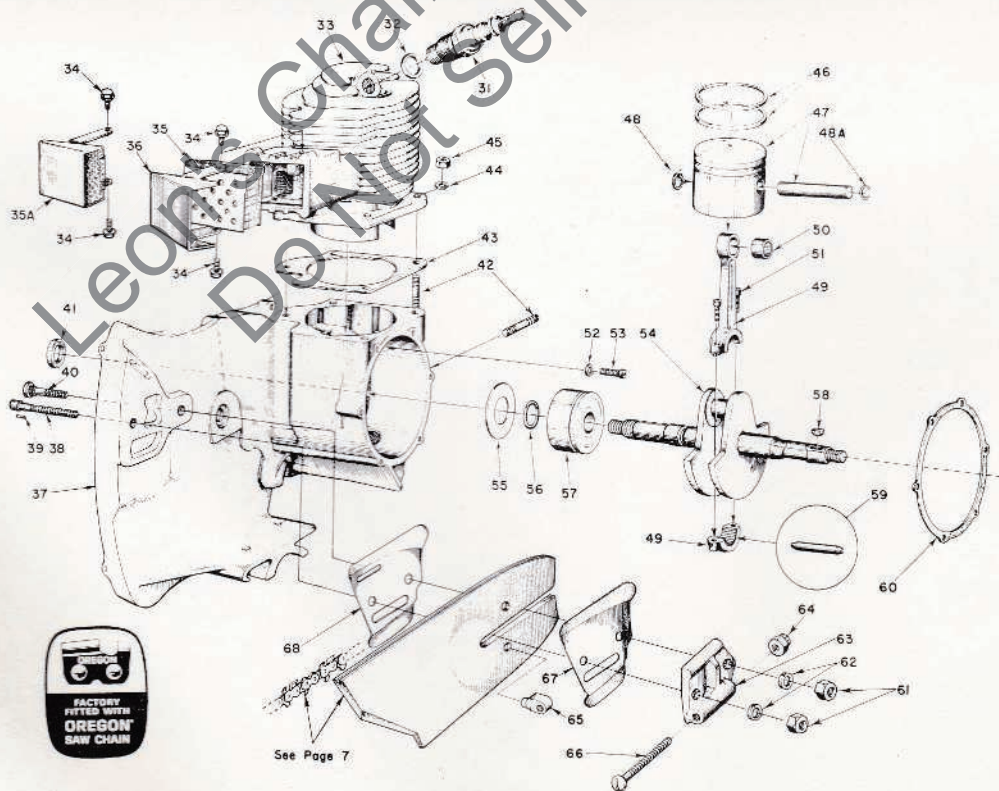


FIGURE 6

ALWAYS FURNISH SAW MODEL AND SERIAL NUMBER WHEN ORDERING PARTS.

HOMELITE SUPER WIZ 66 - WIZ 55 CHAIN SAWS & SUPER WIZ 55

Parts used in each model are indicated by an asterisk (*) in the corresponding model column; a dagger (†) indicates an optional part available from your dealer.

No.	Description	Part No.	SUPER & Wiz Wiz			No.	Description	Part No.	SUPER & Wiz Wiz		
			66	55	Qty.				66	55	Qty.
1	NUT 3/8-24	81192	*	*	1	31	SPARK PLUG	40190-S	*	*	1
2	WASHER - clutch	55036	*	*	1	32	Includes: GASKET	25038	*	*	1
3	COVER - clutch	55128-A	*	*	1	33	CYLINDER	A-59998	*	*	1
	heavy duty, NOTE 1	58023	†	†	1			A-63258	*	*	1
4	SPRING - clutch	55123-C	*	*	2	34	SCREW - hex, 10-24 x 3/8	80869	*	*	2
5	SPIDER - clutch	58546-3	*	*	1	35	MUFFLER	A-56068-A	*	†	1
	heavy duty, NOTE 1	58547-2	†	†	1	35A	MUFFLER - w/cap	A-56613-A	*	*	1
6	SHOE - clutch	A-55692-A	*	*	6	36	CAP - muffler, NOTE 3	56396	*	†	1
	heavy duty, NOTE 1	A-58028	†	†	6	*37	CRANKCASE - SEE NOTE 4	A-64902	*	*	1
*7	WASHER - thrust	64282	*	*	2	38	Includes: BOLT - guide bar	57625	*	*	1
8	GEAR - drive w/drum					39	PIN - bolt	41738	*	*	1
	3.57:1 ratio, 21 teeth	A-64286	*	*	1	40	BOLT - guide bar	58020-A	*	*	1
	2.84:1 ratio, 25 teeth	A-56515	†	†	1	41	SEAL	56134	*	*	1
	2:1 ratio, 32 teeth	A-56158	†	†	1	42	STUD	55871	*	*	6
	Heavy duty, NOTE 1					43	GASKET - cylinder	56864	*	*	1
	3.57:1 ratio, 21 teeth	A-58260	†	†	1	44	WASHER - lock, 1/4	83009	*	*	4
	2.84:1 ratio, 25 teeth	A-58259	†	†	1	45	NUT - 1/4-28	81065-2	*	*	4
	2:1 ratio, 32 teeth	A-58460	†	†	1	46	PISTON RING	55038	*	*	2
9	BEARING - drive gear	56133	*	*	1	*47	PISTON & PIN	AA-55270-A	*	*	1
9A	SCREW - shoulder	64133-A	*	*	1	48	Includes: RING - retaining	55095	*	*	1
10	NUT - lock, 1/2-20	81101	*	*	1	*48A	RING - retaining	64742	*	*	1
11	WASHER - sprocket (outer)	56077	*	*	1	49	ROD - connecting	A-59483	*	*	1
12	SPROCKET - NOTE 2					50	Includes: BEARING - needle	59351	*	*	1
	1/2" pitch, 8 tooth	55593-3	*	*	1	51	SCREW - 8-32 x 9/16	80805	*	*	2
	9/16" pitch, 7 tooth	74481-1	†	†	1	52	WASHER - lock (thin)	83061	*	*	2
	7/16" pitch, 8 tooth	63264	†	†	1	53	SCREW - bearing retaining	19238-A	*	*	2
	7/16" pitch, 7 tooth	63263	†	†	1	54	CRANKSHAFT	58895	*	*	1
13	KEY - sprocket	56076-1A	*	*	2	55	GASKET - sealing	58896	*	*	1
14	WASHER - sprocket (inner)	56074	*	*	1	56	RING - retaining	55048-A	*	*	1
15	SPACER - sprocket	56071	*	*	1	56	BEARING - main	56097-S	*	*	1
16	SEAL - formica	56072	*	*	1	57	KEY - rotor	75078	*	*	1
17	BEARING - ball	56219-S	*	*	1	58	ROLLERS - needle (set of 27)	A-65615	*	*	1
18	RING - retaining	28922	*	*	1	59	GASKET - back plate	55049	*	*	1
19	GEAR - driven					60	NUT - 3/8-16	81089-2	*	*	2
	3.57:1 ratio, 75 teeth	A-56324	*	*	1	61	WASHER - lock, 3/8	83018	*	*	2
	2.84:1 ratio, 71 teeth	A-56518	†	†	1	62	PLATE - adjusting	A-55591	*	*	1
	2:1 ratio, 64 teeth	A-56154	†	†	1	†63	Includes: PLATE	55551-2	*	*	1
20	SHAFT - sprocket	56070	*	*	1	64	NUT	81123	*	*	1
21	SCREW - flat, 12-28 x 3/8	80651	*	*	4	†65	PIN - adjusting	55552-1	*	*	1
22	GASKET - drivecase	55053-B	*	*	1	66	SCREW - rd., 5/16-18 x 2	80617	*	*	1
23	SCREW - hex, 12-24 x 3/4	80867	*	*	9	67	PLATE - guide bar (outer)	56957-A	*	*	1
24	COVER - gear case	AA-55226-C4	*	*	1	68	PLATE - guide bar (inner)	56956	*	*	1
25	Includes: "O" RING	55100	*	*	1						
26	WINDOW	55099	*	*	1						
27	RING	55098	*	*	1						
28	SCREW - 6-32 x 3/8	80618	*	*	3						
29	CAP - filler	A-64310	*	*	1						
30	Includes: GASKET	56607	*	*	1						

* Denotes new parts

† Part numbers change - no physical change.

NOTE 1 - Measure width of clutch shoe to determine type of clutch assembly in unit; 5/8" shoe requires standard type mating parts, 3/4" shoe requires heavy duty replacement parts.

NOTE 2 - Check number of teeth before ordering replacement.

NOTE 3 - NOISE SUPPRESSOR ASSEMBLY #A-56558 available from your HOMELITE Dealer, use in place of #56396 Cap.

NOTE 4 - See Page 4, Note #4.

**You'll
SPEED WORK
and make
MORE MONEY
with...**

HOMELITE

SELF-PRIMING PUMPS



DEPENDABLE GENERATORS



POWERFUL ONE-MAN CHAIN SAWS



ONE-MAN CONCRETE VIBRATORS



ELECTRIC BUILDER'S HAMMERS

HOMELITE[®]

A **textron** DIVISION

PORT CHESTER, N. Y.