

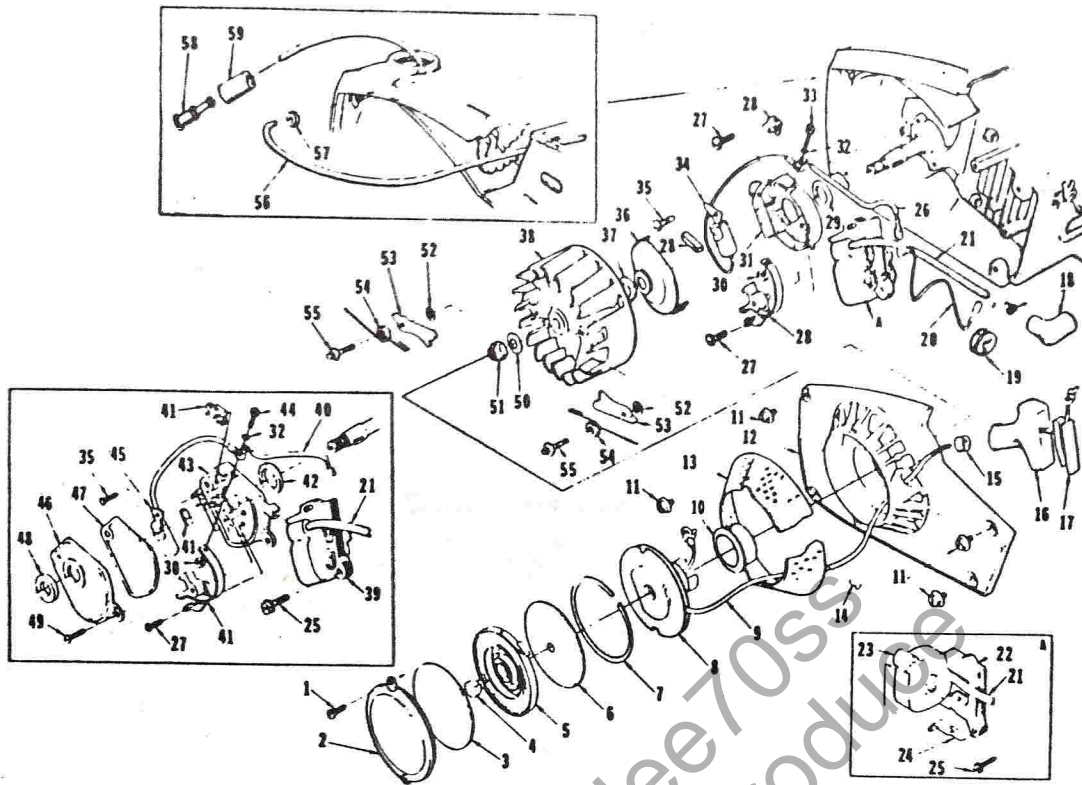
**SUPER MINI S  
PARTS LIST**

Courtesy of undee70ss  
Do Not Sell or Reproduce

**HOMELITE** **TEXTRON**

Homelite Division of Textron Inc.

# SUPER-MINI-S

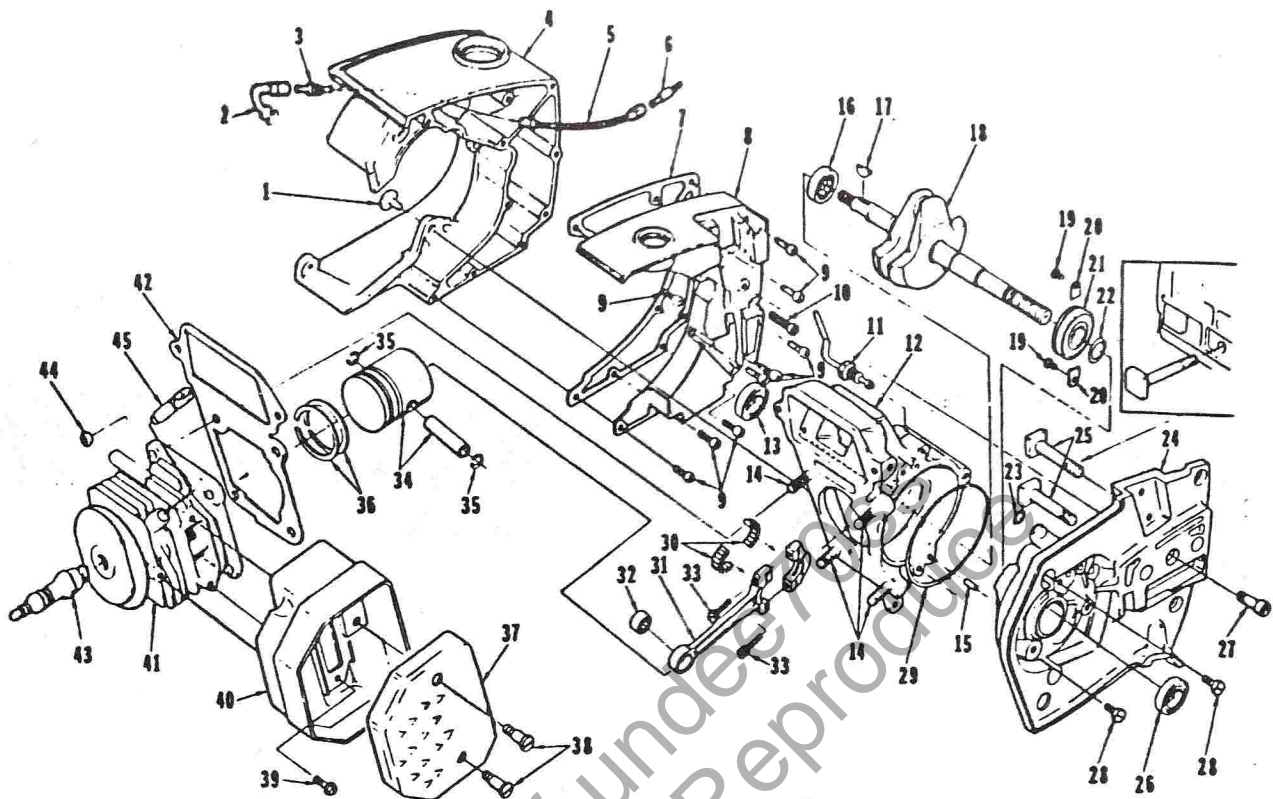


No.	Description	Part No.	Qty.	No.	Description	Part No.	Qty.
1	SCREW- Pan, 8-32 x3/8	80577	2	36	*COVER- Breaker box	A-65210-A	1
2	COVER- Starter	65095-2	1		Includes:		
3	SHIELD- SPRING (Inner)	65113	1	37	*SEAL- Felt	65211	1
4	LOCK- Spring	65102	1	38	*ROTOR- Magneto	65288	1
5	SPRING- Rewind	65107	1		†ROTOR- Magneto	68701	1
6	SHIELD- Spring (outer)	65114	1	39	†COIL & CORE	68716	1
7	RING- Retaining	65125	1	40	†LEAD GROUP- Primary	68712	1
8	PULLEY & CUP	A-65170	1	41	†POINTS- Breaker	A-68710	1
9	ROPE- Starter, 42" #4	68528	1		Includes:		
10	BUSHING- Starter cup	68244	1	42	†SEAL- Felt	68705	1
11	SCREW- Hex, 10-32 x 5/8	80704	4		†WASHER- Thrust (not shown)	28028	A/R
12	HOUSING- Rewind starter	A-65222-1	1		†LOCK- Breaker arm (not shown)	28008	1
	Includes:			43	†BOX- Breaker	68708	1
13	SCREEN- Air, inlet	65189	1	44	†SCREW- Hex, 6-32 x 1/2	68700	1
14	STUD- Drive #2	85133	3	45	†CONDENSER	68711	1
15	BUSHING- Starter rope	65185	1	46	†COVER- Breaker box	A-68704	1
16	GRIP- Starter rope	65183	1		Includes:		
17	INSERT- Rope retaining	68837	1	47	†GASKET- Breaker box cover	68774	1
18	TERMINAL- Spark plug	A-33055	1	48	†SEAL- Felt	68773	1
19	GROMMET- Hi-tension lead	75036	1	49	†SCREW- Cover mounting	68715	2
20	LEAD- Ground	A-63939	1	50	WASHER- Flat, 5/16	84065-1	1
21	LEAD- Hi-tension	65205	1	51	NUT- Hex, 5/16-24	81112	1
22	CORE- Coil	68255	1	52	WASHER- Starter pawl	83046	2
23	*COIL- Ignition	68256	1	53	PAWL- Starter	65108	2
24	*RETAINER- Coil	68257	1	54	SPRING- Starter pawl	65120	2
25	SCREW- Coil core	64021	2	55	STUD- Starter pawl	65109	2
26	*LEAD GROUP- Primary	65291	1	56	LINE- Fuel	A-68053-A	1
27	SCREW- Pan, 6-32 x 3/8	80571	2	57	Includes:		
28	*POINTS- Breaker	A-65203-A	1	57	GROMMET	68046	1
29	Includes:			58	FILTER- Fuel	A-69923	1
29	*SEAL- Felt	65209	1		Includes:		
30	NUT- Hex	65207	1	59	FILTER- Felt	64083	1
31	*BOX- Breaker	65206-A	1				
32	WASHER- Lock, #6	83004-1	1				
33	*SCREW- Hex, 6-32 x 7/16	67628	1				
34	*CONDENSER	65286	1				
35	SCREW- Pan, 6-32 x 1/2	80630	1				

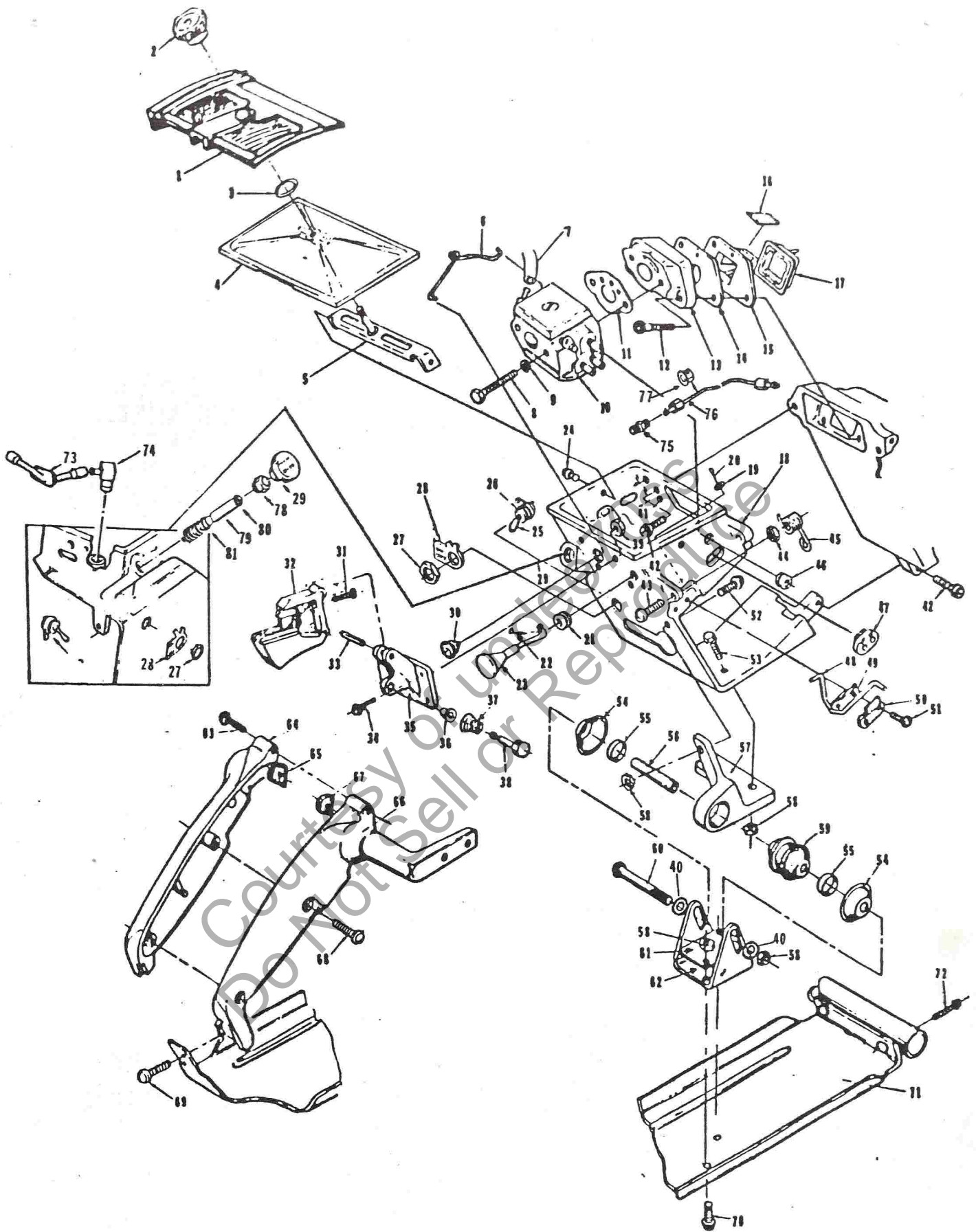
\*Phelon  
†Wico

Phelon and Wico parts are not individually interchangeable.  
Complete magneto must be either Wico or Phelon.

# SUPER-MINI-S

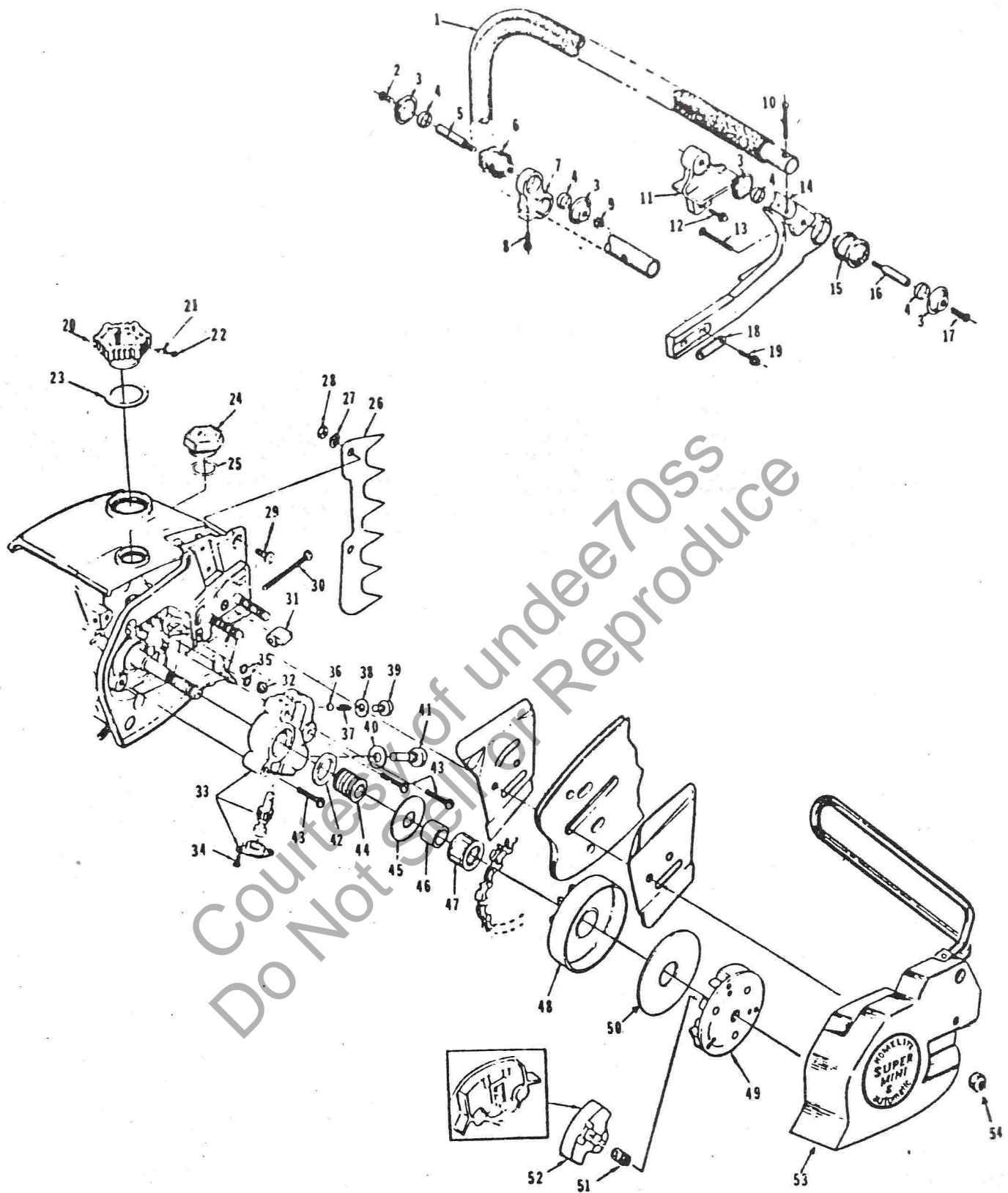


No.	Description	Part No.	Qty.	No.	Description	Part No.	Qty.
1	SCREW- Retaining	65321-A	3	24	DRIVECASE	A-94060	1
2	LINE- Oil (flexible)	65137	1		Includes:		
3	FITTING- Oil line	65138-A	1	25	BOLT- Guide bar	65025	2
4	TANK- Fuel & oil	A-94328	1	26	SEAL	65019-J	1
5	LINE- Oil (pick up)	93112-14	1	27	SCREW- Fil, drivecase retainer	65157-A	1
6	FILTER- Oil	A-65172	1	28	SCREW- Hex, 12-24 x 5/8	80676	3
7	GASKET- Fuel & oil tank	65046	1	29	"O"RING	65127	1
8	COVER- Fuel & oil tank	A-69832	1	30	BEARING- Needle (set of 28)	A-65009	1
9	SCREW- Fil, 8-32 x 5/8	82146	9	31	ROD- Connecting	A-68051	1
10	SCREW- Fil, 8-32 x 1-7/16	82187	1		Includes:		
11	LINE- Oil	A-69334	1	32	BEARING- Needle	68512	1
12	CRANKCASE	A-69260	1	33	SCREW- Soc, 8-32 x 9/16	80805	2
	Includes:			34	PISTON & PIN	A-68487	1
13	SEAL	65019	1		Includes:		
14	STUD- Cylinder	55871	4	35	RING- Piston pin retaining	64813	2
15	PIN- Dowel	65153	1	36	PISTON RING	68508	2
16	BEARING- Roller	65179	1	37	CAP- Muffler	68253-1	1
17	KEY- Woodruff	65126	1	38	SCREW- Shoulder	64133-A	2
18	CRANKSHAFT	65006-2	1	39	SCREW- Hex, 10-32 x 3/8	80870	3
19	SCREW- Bearing retaining	59704	2	40	BODY- Muffler	A-65152-2	1
20	WASHER- Lock special	63905	2	41	CYLINDER- 1-9/16 dia.	A-69737-A	1
21	BEARING- Ball	65044-S	1	42	GASKET- Cylinder	65018	1
22	RING- Retaining	65045	1	43	SPARK PLUG	65130-S	1
23	"O"RING	59074	1	44	NUT- Hex, 1/4-28	81065-2	4
				45	VALVE- Compression release	A-65184	1



# SUPER-MINI-S

No.	Description	Part No.	Qty.	No.	Description	Part No.	Qty.
1	COVER- Air filter	65096-10	1	42	SCREW- 12-24 x 5/8	80676	3
2	NUT- Cover mounting	A-65272	1	43	SCREW- Rd hd. 10-32 x 7/8	80040	1
3	RING- Retaining	58319-A	1	44	NUT- Hex 10-32	81010-1	1
4	FILTER- Element air	A-65178	1	45	SPRING- Release valve	65174	1
5	BRACKET- Air filter cover	A-93138	1	46	GROMMET- Idle	68197	1
6	ROD- Throttle	65072-1	1	47	GROMMET- Hi-Lo	68196	1
7	LINE- Fuel	A-68053-A	1	48	LEVER- Release	69126	1
8	SCREW- Hex hd. (10-32 x 1 5/8)	82165	2	49	PLATE- Lever	65092	1
9	LOCKWASHER	83046	2	50	CLAMP- Lever	65093	1
10	CARBURETOR	A-68415-A	1	51	SCREW- Pan hd.	80571	2
11	GASKET- Carburetor	65016	1	52	SCREW- 10-32 x 5/8	80572	1
12	SCREW- Shoulder	64349-A	3	53	SCREW- 10-32 x 5/8	80704	2
13	MANIFOLD- Intake	A-65154-1A	1	54	WASHER- Vibrator isolation	70440-A	2
14	GASKET- Reed valve seat	65014-A	1	55	RING- Vibrator isolator	70432	2
15	SEAT- Reed valve	65010	1	56	SPACER- Front mount	70530	1
16	REED- Valve	65012-A	4	57	BRACKET- Isolator mounting	70455-2	1
17	RETAINER- Reed valve	65011-A	1	58	NUT- Centerlock 10-32	81206	6
18	CHAMBER- Carburetor	70459-1	1	59	ISOLATOR- Vibration	70485-A	1
19	WASHER- Flat	63290	1	60	SCREW- Machine hex hd.	70549	1
20	PIN- Coller	86301	1	61	PLATE- Bracket	70541-1	1
21	GROMMET	64862	1	62	BRACKET- Isolator (rear)	70460-1	1
22	PIN- Cotter	86324	1	63	SCREW- Pan hd 10/32 x 1	80624	1
23	ROD- Choke	65072-1	1	64	COVER- Throttle handle (left)	A-70518	1
24	SCREW- 8-32 x 3/8	80577	2		Includes:		
25	SLEEVE- Grounding switch	69092	1	65	BUMPER	70496	1
26	SWITCH- Toggle	A-63938	1	66	HANDLE- Throttle (right)	A-70531	1
	Includes:				Includes:		
27	NUT- Toggle switch	72084-A1	1	67	BUMPER	70496	1
28	PLATE INDICATING - "Off-On"	63910	1	68	SCREW- Pan hd. 8-32 x 5/8	80582	2
29	BUTTON- Oil pump	70820	1	69	SCREW- 8-32 x 1/2	80560	2
30	BOOT- Throttle rod	67634	1	70	SCREW- Button hd. hex	82307	1
31	SCREW- Pan hd.	82198	1	71	PLATE- Bottom	A-70519-1	1
32	TRIGGER- Throttle	65031-1	1	72	SCREW- Hex hd. (10-32 x 3/4)	82220	2
33	PIN- Trigger	68699-1	1	73	LINE- Oil	65137	1
34	SCREW- Hex hd.	80983	4	74	VALVE- Check	A-65076	1
35	BRACKET- Throttle trigger	A-70542	1	75	VALVE- Check (outlet)	A-65077	1
	Includes:			76	LINE- Oil	A-65214	1
36	BUSHING	67752-1	1	77	GROMMET- Oil line	65085	1
37	SPRING- Throttle latch	64677	1	78	NUT- Plunger	65082	1
38	PIN- Trigger latch	65171-A	1	79	PLUNGER- Oil pump	A-68061-A	1
39	NUT- Hex centerlock (8-32)	81223	4		Includes:		
40	WASHER- Flat	84068	2	80	"O" Ring	59074	1
41	GROMMET- Oil line	65085-1	1	81	"O" Ring	58406	1

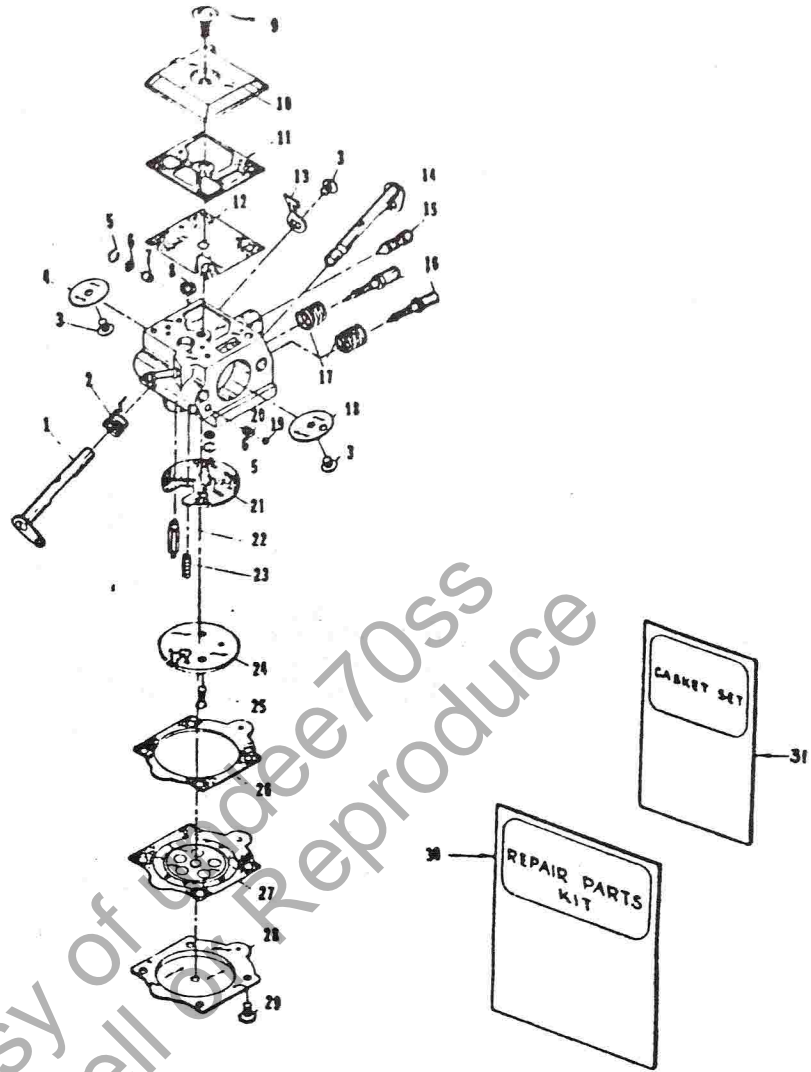


# SUPER-MINI-S

No.	Description	Part No.	Qty.
1	HANDLE BAR- Flush cut	A-70516-1	1
2	SCREW- Cap hex hd. 10-32 x 2.0	82321	1
3	WASHER- Vibration isolation	70440-A	4
4	RING- Vibration isolation	70432	4
5	SPACER	70433	1
6	ISOLATOR- Vibration	70485-A	1
7	CONNECTOR- Isolator mtg.	70457-2	1
8	SCREW- Hex washer hd. (10-32 x 7/8)	82268	1
9	SPACER	70530	1
10	SCREW- Soc. hd. cap 10-32 x 7/8	82169	1
11	BRACKET- Isolator mtg.	70452-2A	1
12	SCREW- 10-32 x 5/8	80704	2
13	SCREW- Flat (12-24 x 1-1/2)	82223	1
14	BRACKET- Handle bar	A-93134	1
15	ISOLATOR- Vibration	70520	1
16	SPACER	70433	1
17	SCREW- Cap hex hd. 10-32 x 2.0	82321	1
18	PLATE- Back	70505-1	1
19	SCREW- 10-32 x 1/2	80648	2
20	CAP- Fuel filler	A-69500-A	1
	Includes:		
21	VALVE- Check	69451	1
22	FILTER- Filler cap	69454	1
23	GASKET- Fuel filler cap	69501	1
24	CAP- Oil	A-65284-1A	1
	Includes:		
25	GASKET- Oil cap	69834	1
26	KIT- Spiked bumper	A-65181	1
	Includes:		
27	SCREW	83006-1	2
28	NUT- Hex 10-32	81010-1	2
29	SCREW- Flat hd 10-32 x 5/8	80035	2
30	SCREW- Guide bar adjusting	65175-A	1
31	PIN- Guide bar adjusting	65112-1	1
32	NUT- Flexloc 10-32	81109-2	1
33	PUMP- Automatic oil	A-65212-B	1
	Includes:		
34	SCREW- Pan hd (4-40 x 1/4)	80919	1
35	"O"RING	59074	2
36	BALL- Rubber 5/32	65225	1
37	SPRING- Check valve	65017	1
38	GASKET- Check valve	65144	1
39	CAP- Check valve	A-68207	1
40	GASKET- Cam screw	65145	1
41	SCREW- Cam	65136	1
42	SEAL- (Felt) oil pump	65142	1
43	SCREW- Pan hd. 8-32 x 3/4	80567	3
44	GEAR- Worm	65047-A	1
45	WASHER- Thrust (outer)	65064	1
46	RACE- Inner	65746-B	1
47	BEARING- Roller	61124	1
48	SPROCKET & DRUM	A-12294-2	1
49	PLATE- Clutch	67855-1	1
50	WASHER- Thrust (Inner)	65024	1
51	SPRING- Clutch	65217	3
52	SHOE- Clutch	65892	3
53	COVER- Drivecase	94616-2	1
54	NUT- 5/16-18	81196	2

# Carburetor

A-68415-A

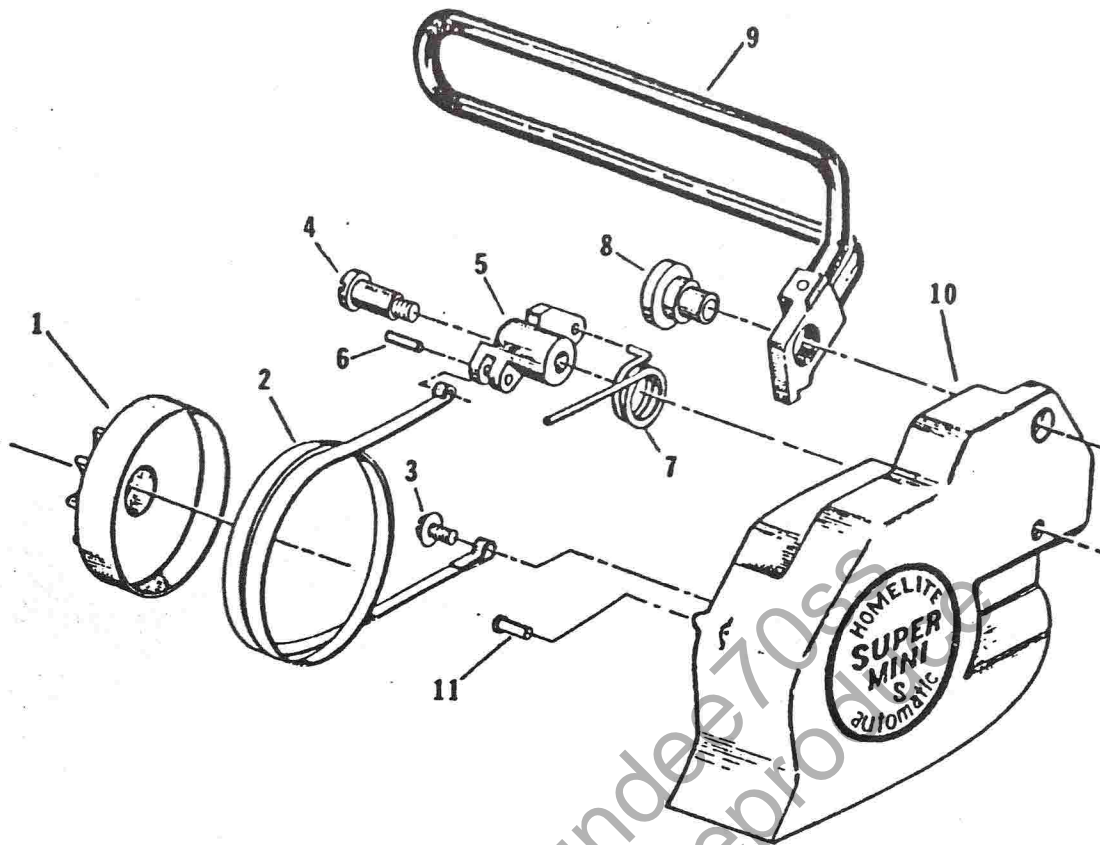


HDC-44

No.	Description	Part No.	Qty.	No.	Description	Part No.	Qty.
1	SHAFT- Throttle	67362	1	18	VALVE- Choke	67365	1
2	SPRING- Throttle return	†67376	1	19	BALL- choke friction	†60051	1
3	SCREW- Valve	†67372	3	20	SPRING- Choke friction	†64238	1
4	VALVE- Throttle	67363	1	21	GASKET- Circuit	†67367	1
5	RING- Screen retaining	†67360	2	22	VALVE- Inlet needle	†64229	1
6	SCREEN- Check valve	†67381	2	23	SPRING- Metering lever	†67378	1
7	JET- Limiting	68461	1	24	PLATE- Circuit	93199	1
8	SCREEN- Fuel inlet	†64243	1	25	SCREW- Circuit plate	67375	2
9	SCREW- Fuel pump	67374	1	26	GASKET- Metering diaphragm	†64231	1
10	COVER- Fuel pump	67361	1	27	DIAPHRAGM- Metering	†67371	1
11	GASKET- Fuel pump	†67368	1	28	COVER- Metering diaphragm	64224	1
12	DIAPHRAGM- Fuel pump	†67370	1	29	SCREW- Metering cover	64689	4
13	STOP- Throttle	67366	1	30	REPAIR KIT	93203	1
14	SHAFT- Choke	67364	1	31	GASKET SET	†67369-A	1
15	SCREW- Idle speed	67373	1		REPAIR KIT- Check valve Assy.	65386	1
16	NEEDLE- Idle adjustment	†93202	2		KIT- Gasket diaphragm	70655	
17	SPRING- Needle adjusting	†67377	2				

†Indicates contents of Repair,Kit #93203  
‡Indicates contents of Gasket Set





## SUPER MINI S CHAIN BRAKE

No.	Description	Part No.	Qty.
1	SPROCKET & DRUM	A-12294-2	1
2	BAND- Brake	94614	1
3	SCREW- 1/4-20 x 5/8	82258	1
4	SCREW- Shoulder	69551	1
5	LEVER- Brake	94615-1	1
6	PIN- Roll (3/16 x 1/2)	67911	1
7	SPRING- Torsion	70093-B	1
8	SUPPORT- Vibration mount	70506-A	1
9	HAND GUARD & LEVER	A-69660-A	1
10	COVER- Drivecase	94616-2	1
11	SLEEVE- Headed	70313	1