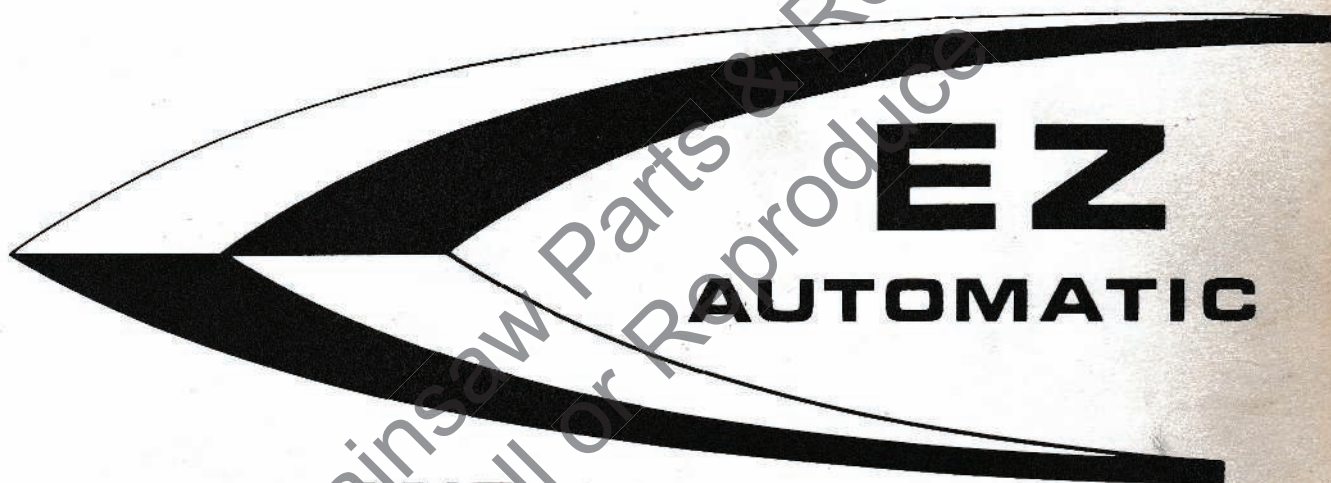


# PARTS LIST



**AND**

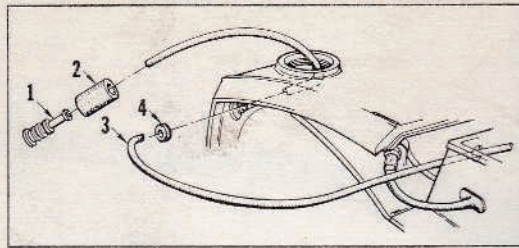


# HOMELITE®

## CHAIN SAWS

PRICE .35  
PART NO. 24522-A, REV. 1  
PRINTED IN U.S.A.

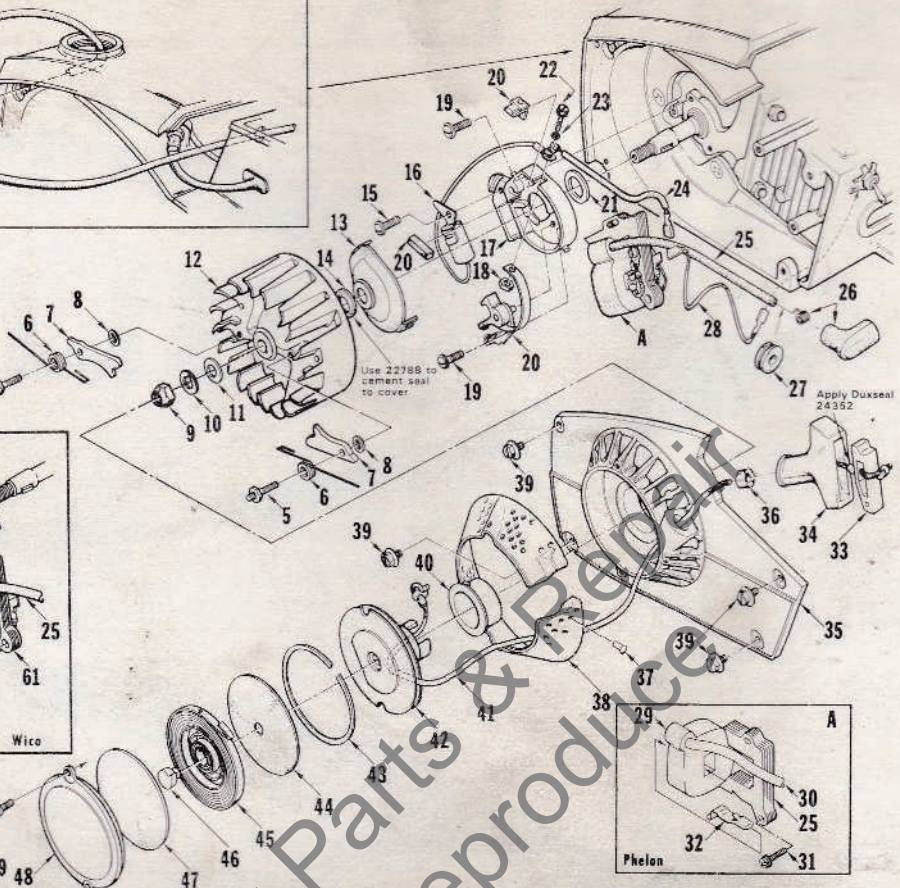
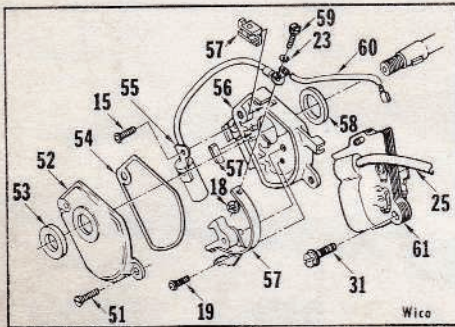




Apply Loctite stud to rotor

Use 22798 to cement seal to cover

Apply Duxseal 24352



No.	Description	Part No.	Qty.	No.	Description	Part No.	Qty.
1	FILTER-fuel (Note 1)	A-69923	1	33	INSERT-rope retaining	68837-A	1
2	Includes: FILTER-felt	64083	1	34	CRIP-starter rope	64155-B	1
3	LINE-fuel	A-68053-A	1	35	HOUSING-rewind starter	A-65222-1	1
4	Includes: GROMMET	68046	1		Includes:		
5	STUD-starter pawl	65109	2	36	BUSHING-starter rope	65185	1
6	SPRING-starter pawl	65120	2	37	STUD-drive #2	67191	3
7	PAWL-starter	65108	2	38	SCREEN-air inlet	65189	1
8	WASHER-lock	83046	2	39	SCREW-hex, 10-32 x 5/8	80704	4
9	NUT-hex, 5/16-24	81117	1	40	BUSHING-starter cup (Note 2)	68244	1
10	WASHER-lock	83092	1	41	ROPE-starter, 46"	65118	1
11	WASHER-flat, 5/16	84065-1	1	42	PULLEY & CUP	A-65170	1
12	ROTOR-magneto	(P)65288-A	1	43	RING-shield retaining	65125	1
	ROTOR-magneto	(W)63701	1	44	SHIELD-spring (outer)	65114	1
13	COVER-breaker box	(P)A-65210-A	1	45	SPRING-rewind	65107	1
14	Includes: SEAL-breaker box covr.	(P)65211	1	46	LOCK-spring	65102	1
15	SCREW-pan, 6-32 x 1/2	80630	1	47	SHIELD-spring (inner)	65113	1
16	CONDENSER	(P)65286	1	48	COVER-starter	65095-2	1
17	BOX-breaker	(P)65206-A	1	49	DECAL-starter cover	68920	1
18	NUT	65207	1	50	SCREW-pan, 8-32 x 3/8	80577	2
19	SCREW-pan, 6-32 x 3/8	80571	2	51	SCREW-cover mounting	(W)68715	2
20	POINTS-breaker	(P)A-65203-A	1	52	COVER-breaker box	(W)A-69507	1
21	Includes: SEAL-breaker box	(P)65209	1		Includes:		
22	SCREW-hex, 6-32 x 7/16	(P)67628	1	53	SEAL-breaker box cover	(W)68773-1	1
23	WASHER-lock #6	83004-1	1	54	GASKET-breaker box cover	(W)69512	1
24	LEAD GROUP-primary	(P)65291	1	55	CONDENSER	(W)68711	1
25	LEAD-hi tension	65205	1	*56	BOX-breaker	(W)69308	1
26	TERMINAL-spark plug	A-33055	1	57	POINTS-breaker	(W)A-68710	1
27	GROMMET-hi tension lead	75036	1		Includes:		
28	LEAD-ground	A-63939	1	38	SEAL-felt	(W)68705	1
29	COIL-ignition	(P)68256	1		WASHER-thrust (not shown)	(W)28028	A/R
30	CORE-coil	(P)68253	1		LOCK-breaker arm (not shown)	(W)28008	1
31	SCREW-hex washer hd., 8-32 x 3/4	82248	2	59	SCREW-hex, 6-32 x 1/2	(W)68700	1
32	RETAINER-coil	(P)68257	1	60	LEAD GROUP-primary	(W)68712	1
				61	COIL & CORE	(W)68716	1

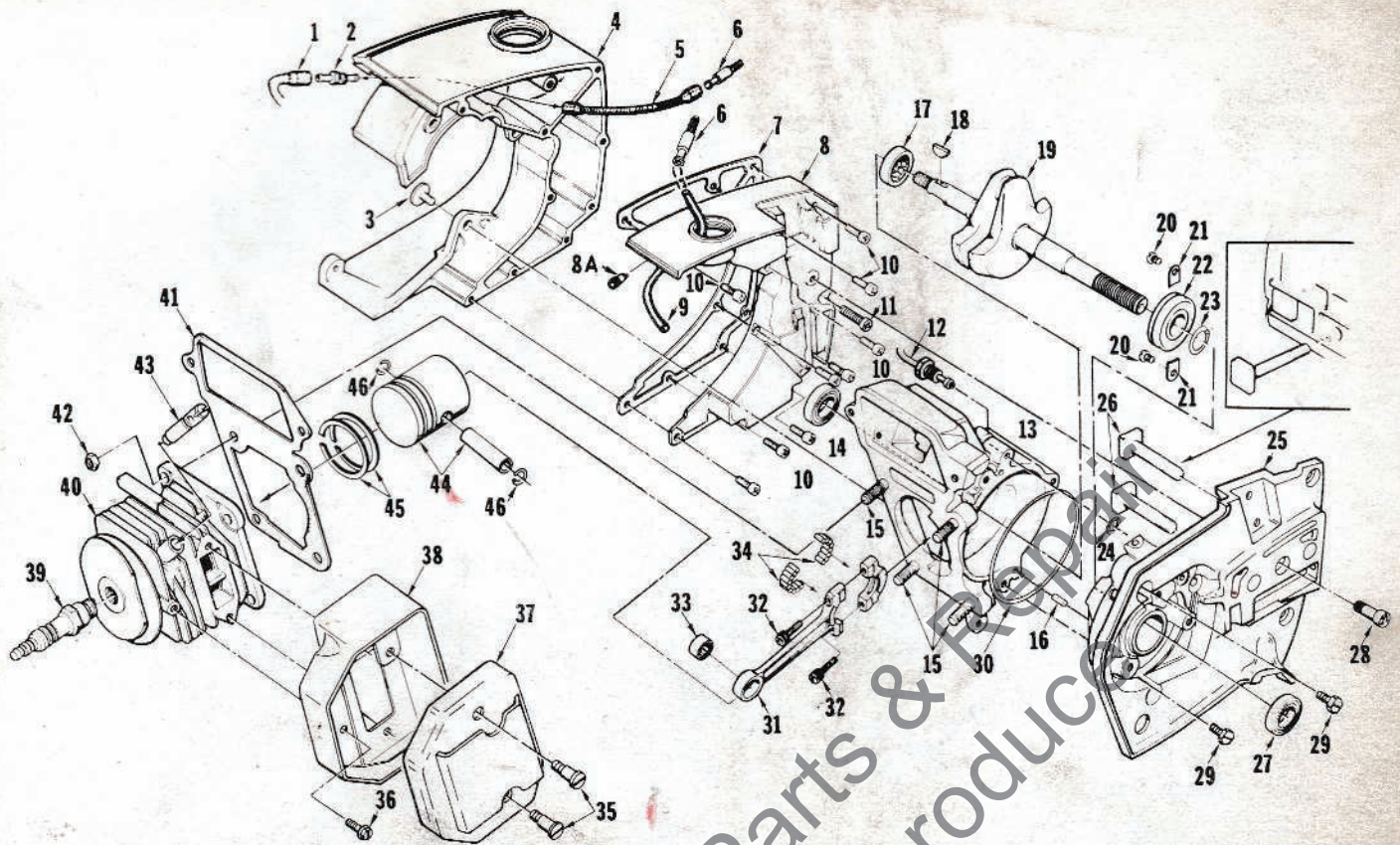
Note 1 - Units prior to s/n 43370105 with A-63920 Filter must use 64182 Washer.

Note 2 - For units prior to s/n 22080433 - 67893 Shield, pulley not required when using 68244 Bushing, starter cup.

Complete magneto must be either (W) Wico or (P) Phelon. Phelon and Wico parts are not individually interchangeable.

\* Denotes new parts





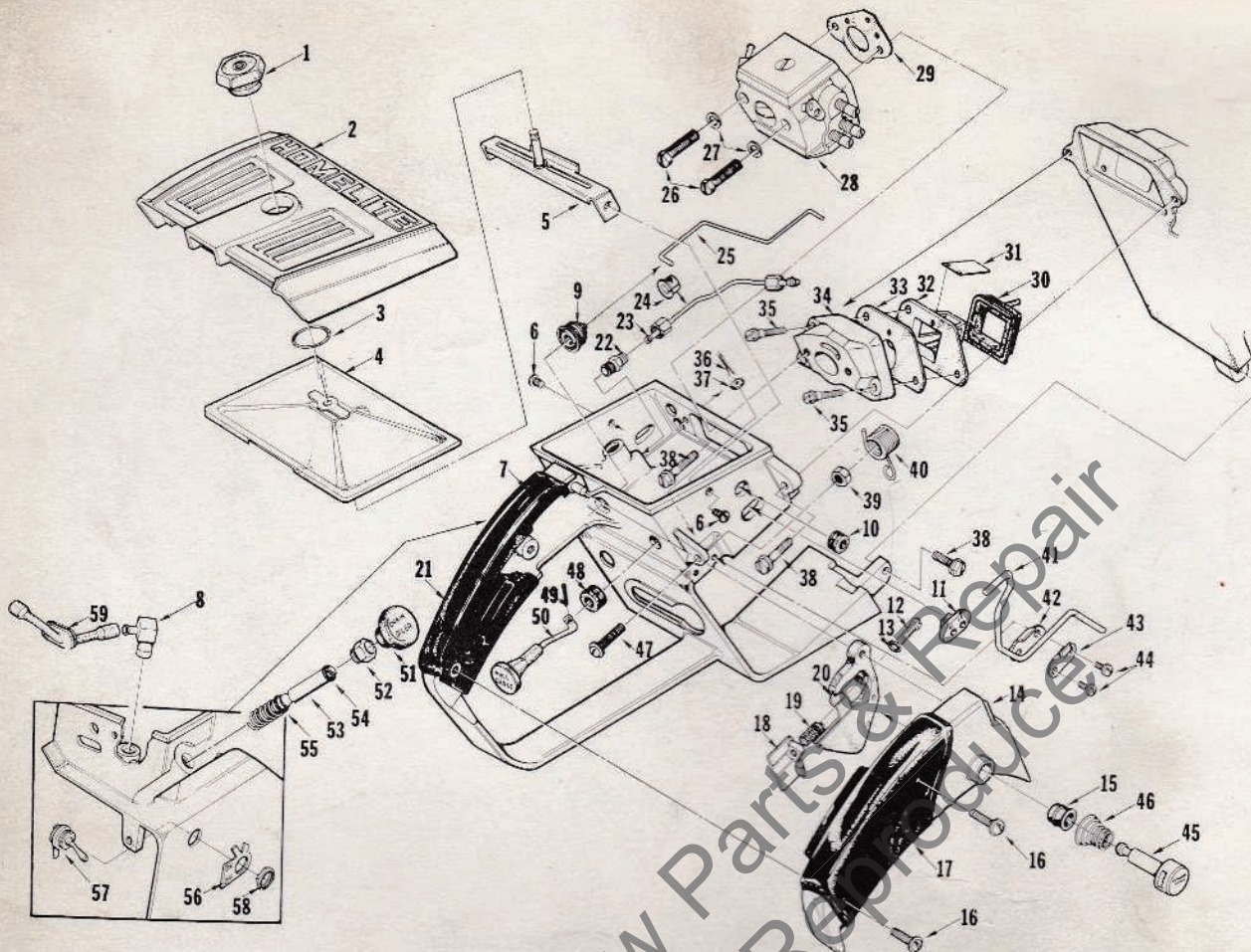
No.	Description	Part No.	Qty.	No.	Description	Part No.	Qty.
1	LINE-oil	65137	1	30	"O" RING	65127	1
2	FITTING-oil line	65138-A	1	31	ROD-connecting	A-68051	1
3	SCREW-retaining	65321	3		Includes:		
4	TANK-fuel and oil	65037-7	1	32	SCREW-cap, hex soc. hd.	69919	2
5	LINE-oil (pick-up)	58340-B	1	33	BEARING-needle	68512	1
6	FILTER-oil	A-65172	2	34	BEARING-needle (set of 28)	A-65009	1
7	GASKET-fuel & oil tank	65046	1	35	SCREW-shoulder	64133-A	2
8	COVER-fuel & oil tank	A-69832	1	36	SCREW-hex, 10-32 x 3/8	80870	3
8A	Includes:			37	CAP-muffler w/shield	A-68950-1	1
	VALVE-check (Note 1)	69451	1	38	BODY-muffler	A-65152-2	1
* 9	LINE-oil (Note 1)	69755	1		MUFFLER-diffuser (not shown)	†A-68254	1
10	SCREW-fil, 8-32 x 5/8	82146	9		Includes:		
11	SCREW-fil., 8-32 x 7/16	82187	1		CAP-muffler	†68253-1	1
12	LINE-oil	A-65214	1		plus items #35, 36, and 38		
13	CRANKCASE	A-69260	1		MUFFLER-(not shown)	†A-65275	1
	Includes:				CAP-muffler	†65066-2	1
14	SEAL	65019	1		BAFFLE-muffler	†65067	1
15	STUD-cylinder	55871	4		plus items #35, 36, and 38		
16	PIN-dowel	65153	1	39	SPARK PLUG	65130-S	1
17	BEARING-roller	65179	1	40	CYLINDER-1-9/16 dia.	A-69737	1
18	KEY-woodruff	65126	1		Includes:		
19	CRANKSHAFT	65006-2	1	41	GASKET-cylinder	65018	1
20	SCREW-bearing retaining	59704	2	42	NUT-hex, 1/4-28	81065-2	4
21	WASHER-lock special	63905	2	43	VALVE-compression release	A-65184	1
22	BEARING-ball	65044-S	1	44	PISTON & PIN	A-68487	1
23	RING-retaining	65045	1		Includes:		
24	"O" RING	59074	1	45	PISTON RING	68508	2
25	DRIVECASE (see note 2)	A-69807	1	46	RING-piston pin retaining	64813	2
	Includes:						
26	BOLT-guide bar	65025	2				
27	SEAL	65019	1				
28	SCREW-fil., drivecase retainer	65157	1				
29	SCREW-hex, 12-24 x 5/8	80876	3				

\* Denotes new parts † Optional

Note 1 - Oil line 69755 not used in units built prior to s/n 42042785 with single oil line system. Install 69451 check valve in oil line hole.

Note 2 - Use A-65200-1 Drivecase for units prior to s/n 42042785 with single oil line system.





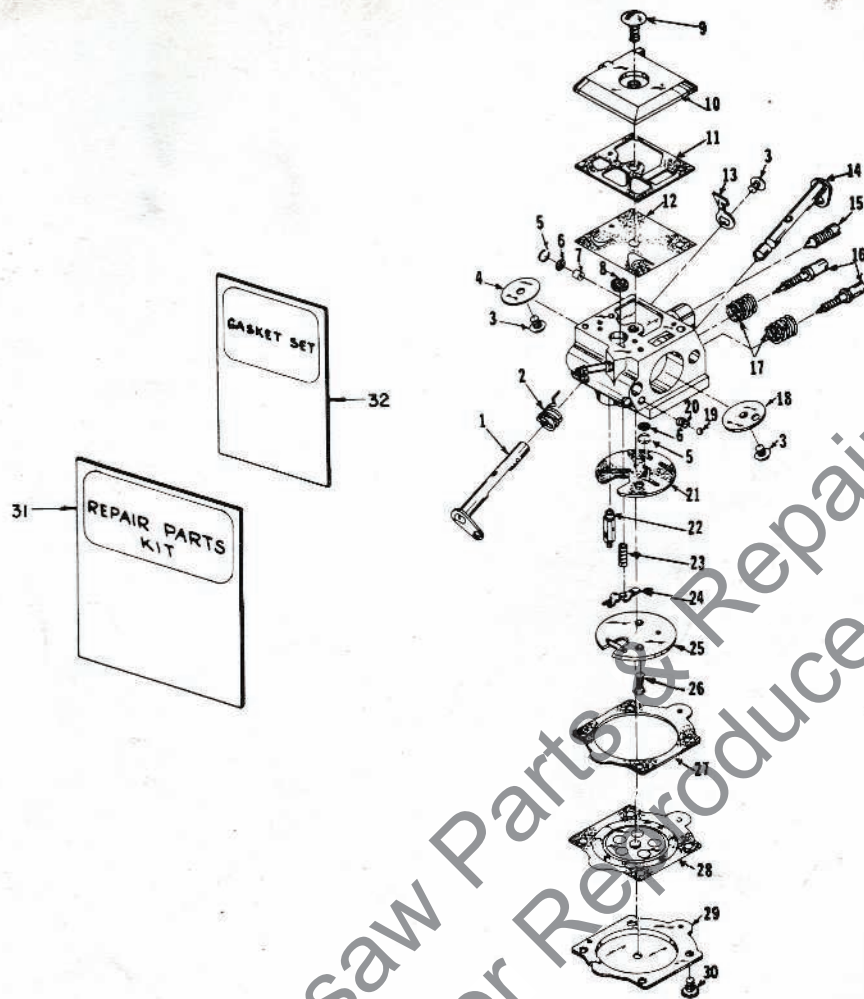
No.	Description	Part No.	Qty.	No.	Description	Part No.	Qty.
1	NUT-cover mounting	A-65272	1	29	GASKET-carburetor	65016	1
2	COVER-air filter	65096-5	1	30	RETAINER-reed valve	65011-A	1
3	RING-retaining	58319-A	1	31	REED-valve	65012-A	4
4	FILTER ELEMENT-air	A-65178	1	32	SEAT-reed valve	65010	1
5	BRACKET-air filter cover	A-65123	1	33	GASKET-reed valve seat	65014-A	1
6	SCREW-pan, 8-32 x 3/8	80577	2	34	MANIFOLD-intake	A-65154-1A	1
7	HANDLE-throttle	A-68267-A	1	35	SCREW-shoulder	64349-A	3
	Includes:			36	PIN-cotter, 1/16 x 1/2	86301	1
8	VALVE-check (inlet)	A-65076	1	37	WASHER-felt	63290	1
9	BOOT-throttle rod	67634	1	38	SCREW-hex, 12-24 x 5/8	80676	3
10	GROMMET-idle adjusting	68197	1	39	NUT-hex, 10-32 (see note 1)	81010-1	1
11	GROMMET-"hi-lo"	68196	1	40	SPRING-release valve	65174	1
	LINE-fuel (shown in Fig. 1)	A-68053-A	1	41	LEVER-release	65173	1
	Includes: GROMMET (Fig. 1)	68046	1	42	PLATE-lever	65092	1
12	SCREW-pan, 6-40 x 1	82198	1	43	CLAMP-lever	65093	1
13	"O" RING	65260	1	44	SCREW-pan, 6-32 x 3/8	80571	2
14	COVER-throttle handle	68852-2	1	45	PIN-trigger latch	65171-A	1
15	BUSHING	67752	1	46	SPRING-throttle latch	64677	1
16	SCREW-pan, 8-32 x 1/2	80560	2	47	SCREW-round hd., 10-32 x 7/8 (see note 1)	180040	1
17	GRIP-throttle handle cover	68759	1	48	GROMMET-choke	64862	1
18	STOP-throttle adjustment	65147-A	1	49	PIN-cotter, 1/32 x 1/2	86324	1
19	SPRING-throttle stop	65188	1	50	ROD-choke	65072-1	1
*20	TRIGGER-throttle	65031-A	1	51	BUTTON-oil pump	65084	1
21	GRIP-throttle handle	68770	1	52	NUT-oil plunger	65082	1
22	VALVE-check (outlet)	A-65077	1	53	PLUNGER-oil pump	A-68061-A	1
23	LINE-oil	A-65214	1	54	Includes: "O" RING	59074	1
24	GROMMET-oil line	65085	1	55	"O" RING	58406	1
25	ROD-throttle	65056	1	56	PLATE-"on-off"	63910	1
26	SCREW-hex, 10-32 x 1-5/8	82165	2	57	SWITCH-grounding	A-63938	1
27	WASHER-lock, #10	83046	2	58	Includes: NUT-hex	72084-A1	1
28	CARBURETOR-(HDC-4)	A-68415	1	59	LINE-oil	65137	1

\* Denotes new parts

Note 1 - 65023 spring post and 81126 Nut-hex are still required for units built prior to s/n 22001205.

ALWAYS FURNISH MODEL AND SERIAL NUMBER WHEN ORDERING PARTS.





A- 68415

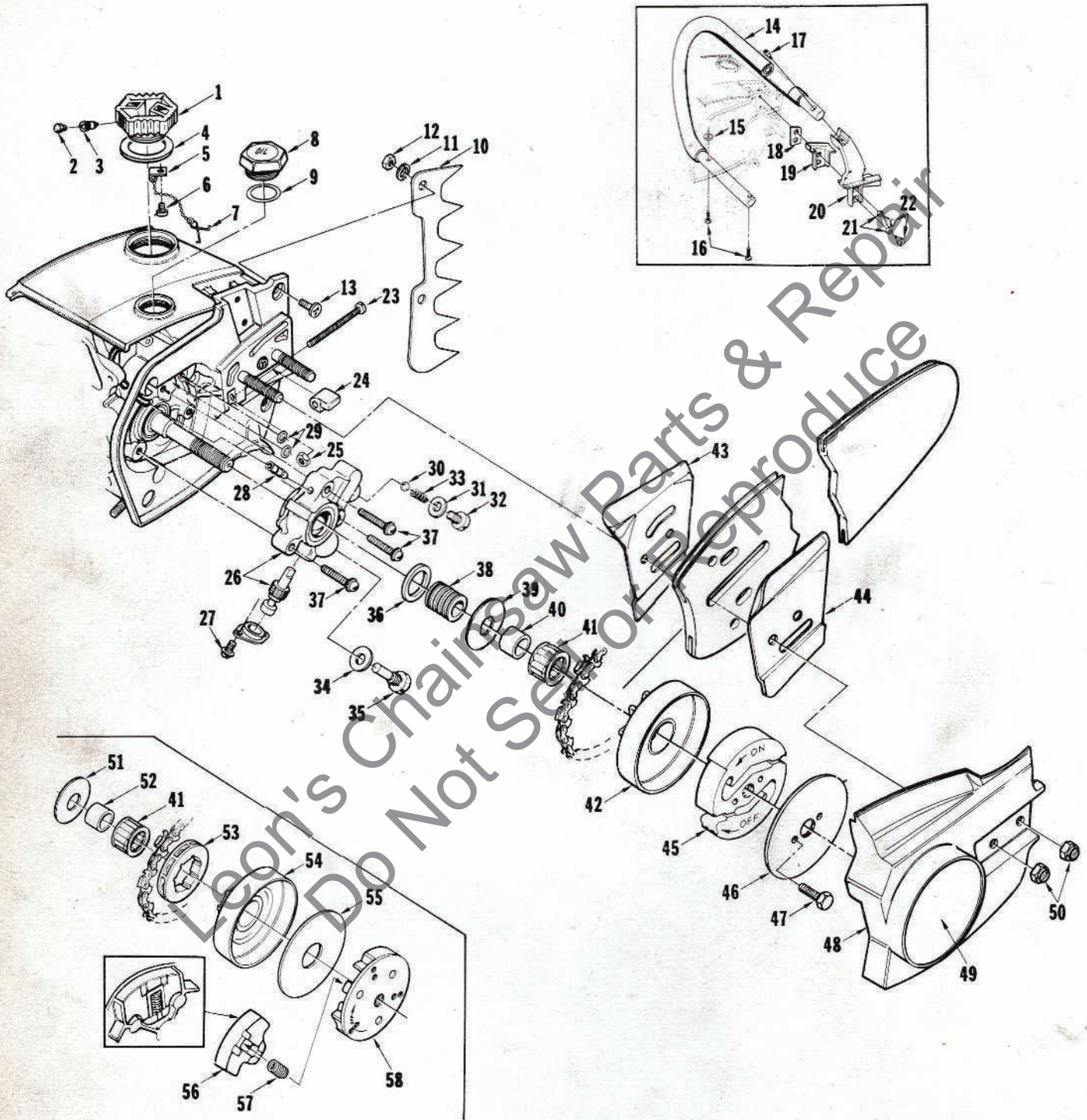
HDC- 4

No.	Description	Part No.	Qty.	No.	Description	Part No.	Qty.
1	SHAFT-throttle	67362	1	18	VALVE-choke	67365	1
2	SPRING-throttle return	†67376	1	19	BALL-check valve	†60051	1
3	SCREW-valve	†67372	3	20	SPRING-choke friction	†64238	1
4	VALVE-throttle	67363	1	21	GASKET-circuit	67367-A	1
5	RING-screen retaining	†67360	2	22	NEEDLE-inlet	†64229	1
6	SCREEN-check valve	†67381	2	23	SPRING-metering lever	†67378	1
7	JET-limiting	68461	1	24	LEVER-metering	†67383	1
8	SCREEN-fuel inlet	†64243	1	25	PLATE-circuit	67382	1
9	SCREW-fuel pump cover	67374	1	26	SCREW-circuit plate	67375	2
10	COVER-fuel pump	67361	1	27	GASKET-metering diaphragm	64231	1
11	GASKET-fuel pump	67368	1	28	DIAPHRAGM-metering	†67371	1
12	DIAPHRAGM-fuel pump	†67370	1	29	COVER-metering diaphragm	64224	1
13	STOP-throttle	67366	1	30	SCREW-metering cover	64689	4
14	SHAFT-choke	67364	1	31	KIT-repair	67384	1
15	NEEDLE-idle adjustment	67373	1	32	GASKET SET	†67369-A	1
16	NEEDLE-mixture adjustment	†67379	2		KIT-check valve repair	65386	1
17	SPRING-needle adjusting	†67377	2				

† Indicates contents of Repair Kit #67384

ALWAYS FURNISH MODEL AND SERIAL NUMBER WHEN ORDERING PARTS.





ALWAYS FURNISH MODEL AND SERIAL NUMBER WHEN ORDERING PARTS.



No.	Description	Part No.	Qty.	No.	Description	Part No.	Qty.
1	CAP-fuel filler	A-69500	1	28	FITTING-tube	69833	1
	Includes:			29	"O" RING	59074	2
2	FILTER-filler cap	69454	1	30	BALL-check	65225	1
3	VALVE-check	69451	1	31	GASKET-check valve	65144	1
4	GASKET-fuel filler cap	69501	1	32	CAP-check valve	A-68207	1
5	CHAIN-bead	69502	1	33	Includes: SPRING-check valve	65017	1
6	SCREW-pan hd., plastite, 6 x 1/4	82256	1	34	GASKET-cam screw	65145	1
7	RETAINER-filler cap	69503	1	35	SCREW-cam	65136	1
* 8	CAP-oil filler (vented)	A-65284-B	1	36	SEAL-oil pump	65142	1
	Includes:			37	SCREW-pan, 8-32 x 3/4	80567	3
	VALVE-check (not shown)	69451	1	38	GEAR-worm	65047-A	1
9	GASKET-oil cap	69834	1	39	WASHER-thrust (outer)	65064	1
10	KIT-spiked bumper (accessory)	†A-65181	1	40	RACE-inner	65746-A	1
	Includes:			41	BEARING-needle	64124	1
11	WASHER-lock, #10	†83006-1	2	42	SPROCKET & DRUM	A-65033	1
12	NUT-hex, 10-32	†81010-1	2	43	PLATE-guide bar (inner)	67300-A	1
13	SCREW-flat, 10-32 x 5/8	†80035	2	44	PLATE-guide bar (outer)	67299-A	1
14	HANDLE BAR-flush cut (note 1)	A-69675	1		CLUTCH AND PLATE	A-69953	1
	Includes:				Includes:		
15	WASHER	69890	1	45	CLUTCH	68362-1A	1
16	SCREW-10-32 x 7/8	82268	2	46	PLATE	69915	1
	HANDLE BAR (full wraparound) (note 2)	†A-68469-2	1	* 47	SCREW	80361-2	2
	Includes: PIN-spirol (not shown)	†41738	1	48	COVER-drivecase	65131-10	1
17	SCREW-soc., 10-32 x 7/8	82169	1	49	DECAL-drivecase cover	68921	1
18	PLATE-handle bar bracket	65032	1	50	NUT-hex, 5/16-18	81196	2
19	MOUNT-shock	65111	1	51	WASHER-thrust (outer) for rimmed sprocket (note 3)	†65027	1
20	BRACKET-handle bar	68734-2	1	52	RACE-inner (note 3)	†65985-A	1
	BRACKET-handle bar (note 2)	†65035-3	1	53	SPROCKET-rim type, (3/8, 7 tooth)(note 3)	†63284-S	1
21	GROMMET-handle bar	64473	2	54	HUB & DRUM (note 3)	†A-65987	1
22	SCREW-shoulder	64613-A	2	55	WASHER-thrust (inner) (note 4)	†65024-1	1
23	SCREW-guide bar adjusting	65175-A	1		WASHER-thrust (inner) note 3)	†58833-1	1
24	PIN-bar adjusting	65112-1	1	56	SHOE-clutch (note 4)	†65892	3
25	NUT-lock, 10-32	81206	1	57	SPRING-clutch (note 4)	†65217	3
26	PUMP-automatic oil	A-65212-B	1	58	PLATE-clutch (aluminum) note 4)	†65146-1	1
	Includes:						
27	SCREW-pan, 4-40 x 1/4	80919	2		† Optional		

\* Denotes new parts

Note 1 - A-69675, handle bar, and 82268, screw, can be used in a combination with rubber pad 65124, grommet 65122, and screw, shoulder 65121, which were built prior to s/n 41411665.

Note 2 - Use 65035-3 Bracket when using A-68469-2 Handle Bar.

Note 3 - When using A-65987 Drum & Hub index numbers 51, 52, 53, 55 and 58833-1 are required.

Note 4 - Units with 3 piece clutch include items #56, 57, and 58 required index #55 65024-1 (inner) Thrust Washer.

#### TOOLS

ANVIL-crankshaft installation	24299
BIT-#3 pozidriv	24320
BIT-#2 pozidriv	24304
COLLAR-bearing installation	24295
DRIVER-check valve (carburetor)	24173
JACKSCREW	A-24309
Includes:	
WASHER	84035
PLUG-bearing & seal installation	24298
PLUG-bearing installation	23756
PLUG-needle bearing installation	24294
PLUG-seal & bearing removal	24292
PULLER-magneto rotor	A-24290
Includes:	
SCREW-rotor remover (4)	24301
RING-retaining (4)	67912
SLEEVE-bearing & shaft installation	23136-1
SLEEVE-crankshaft bearing installation	24300
SLEEVE-seal protecting (crankcase)	24297
SLEEVE-seal protecting	24291
WRENCH-spanner	A-24060
Includes:	
PIN-dowel (3)	64309

SHIM-black plastic	24306
WRENCH-combination	A-24284
WRENCH-spanner ("S" Clutch)	A-23696-A
Includes:	
PIN-clutch spanner (2)	23717-A
REAMER-valve seat	A-24138
GAUGE-feeler (.015)	22486

#### ACCESSORIES

CARRYING CASE	A-68936
COMPOUND-sealing (Duxseal)	24352
KIT-heat exchanger	A-67947
KIT-Loctite	23488-B
KIT-repair (sprocket nose bars)	A-67050
KIT-throttle adj. stop units below s/n 93380678A	67802
ROPE-starter, 250' reel #4	68848
SPARK ARRESTOR ASSEMBLY	A-65256

#### PAINT

SPRAY CAN-black	22772
SPRAY CAN-red	23475
SPRAY CAN-white	23560



Part No.	Description	Qty.	Part No.	Description	Qty.	Part No.	Description	Qty.	Part No.	Description	Qty.
22486	Gauge-feeler	1	65067	Baffle-muffler	1	67191	Stud-drive, #2	3	A-69507	Cover-breaker	1
22772	Paint-black	1	65072-1	Rod choke	1	67299-A	Plate-guide bar	1	*69508	Box-breaker	1
23136-1	Sleeve-bearing	1	A-65076	Valve-check	1	67300-A	Plate-guide bar	1	69512	Gasket-breaker	1
23475	Paint-red	1	A-65077	Valve-check	1	67360	Ring-screen	2	A-69675	Handle Bar	1
23488-B	Kit-Loctite	1	65084	Button-oil pump	1	67361	Cover-fuel pump	1	A-69737	Cylinder	1
23560	Paint-white	1	65085	Grommet-oil	1	67362	Shaft-throttle	2	*69755	Line-oil	1
A-23696-A	Wrench-spanner	1	65092	Plate-lever	1	67364	Shaft-choke	1	A-69807	Drivecase	1
23717-A	Pin-clutch	2	65093	Clamp-lever	1	67365	Valve-choke	1	A-69832	Cover-fuel & oil	1
23756	Plug-bearing	1	65095-2	Cover-starter	1	67366	Stop-throttle	1	69833	Fitting-tube	1
A-24060	Wrench-spanner	1	65096-5	Cover-air filter	1	67367-A	Gasket-circuit	1	69834	Gasket-oil cap	1
A-24138	Reamer-valve	1	65102	Lock-spring	1	67368	Gasket-fuel	1	69915	Plate	1
24173	Driver-check	1	65107	Spring-rewind	1	67369-A	Gasket Set	1	A-69923	Filter-fuel	1
A-24284	Wrench	1	65108	Pawl-starter	2	67370	Diaphragm-fuel	1	A-69953	Clutch & Plate	1
A-24290	Puller-magneto	1	65109	Stud-starter	2	67371	Diaphragm	1	75036	Grommet	1
24291	Sleeve-seal	1	65111	Mount-shock	1	67373	Needle-idle	1	FASTENING PARTS		
24292	Plug-seal	1	65112-1	Pin-bar adjusting	1	67375	Screw-circuit	2	24301	Screw-rotor	4
24294	Plug-needle	1	65113	Shield-spring	1	67376	Spring-throttle	1	28028	Washer-thrust	A/R
24295	Collar-bearing	1	65114	Shield-spring	1	67377	Spring-needle	2	58833-1	Washer-thrust	1
24297	Sleeve-seal	1	65118	Rope-starter	1	67378	Spring-metering	1	59704	Screw-bearing	2
24298	Plug-bearing	1	65120	Spring-starter	2	67379	Needle-mixture	2	63290	Washer-felt	1
24299	Anvil-crankshaft	1	A-65123	Bracket-air filter	1	67381	Screen-check	2	63905	Washer-lock	2
24300	Sleeve-crankshaft	1	65125	Ring-shield	1	67382	Plate-circuit	1	64133-A	Screw-shoulder	2
24304	Bit-#2	1	65126	Key-Woodruff	1	67383	Lever-metering	1	64349-A	Screw-shoulder	3
A-24309	Jackscrew	1	65127	"O" Ring	1	67384	Kit-repair	1	64613-A	Screw-shoulder	2
24320	Bit-#3	1	65130-S	Spark Plug	1	67634	Boot-throttle rod	1	64689	Screw-metering	4
24352	Compound-sealing	1	65131-10	Cover-drivecase	1	67752	Bushing	1	65024-1	Washer-thrust	1
28008	Lock-breaker	1	65137	Line-oil	1	A-67802	Kit-throttle	1	65027	Washer-thrust	1
A-33055	Terminal	1	65138-A	Fitting-oil line	1	67912	Ring-retaining	4	65064	Washer-thrust	1
41738	Pin-spirol	1	65142	Seal-oil pump	1	A-67947	Kit-heat	1	65082	Nut-oil plunger	1
55871	Stud-cylinder	4	65144	Gasket-check	1	68046	Grommet	2	65136	Screw-cap	1
58319-A	Ring-retaining	1	65145	Gasket-cap	1	A-68051	Rod-connecting	1	65157	Screw-fil.	1
58340-B	Line-oil	1	65146-1	Plate-clutch	1	A-68053-A	Line-fuel	1	65175-A	Screw-guide bar	1
58406	"O" Ring	1	65147-A	Stop-throttle	1	A-68061-A	Plunger-oil pump	1	65207	Nut	1
59074	"O" Ring	2	A-65152-2	Body-muffler	1	68196	Grommet-hi-lo	1	67372	Screw-valve	3
60051	Ball-check valve	1	65153	Pin-dowel	1	68197	Grommet-idle	1	67374	Screw-fuel pump	1
63284-S	Sprocket-rim type	1	A-65154-1A	Manifold-intake	1	A-68207	Cap-check valve	1	67628	6-32 x 7/16	1
63910	Plate-"On-Off"	1	A-65170	Pulley & Cup	1	68253-1	Cap-muffler	1	68700	6-32 x 1/2	1
A-63938	Switch-grounding	1	65171-A	Pin-trigger	1	68244	Bushing-starter	1	68715	Screw-cover	2
A-63939	Lead-ground	1	A-65172	Filter-oil	2	A-68254	Muffler-diffuser	1	69890	Washer	1
64083	Filter-felt	1	65173	Lever-release	1	68255	Core-coil	1	69919	Screw-cap	2
64124	Bearing-needle	1	65174	Spring-release	1	68256	Coil-ignition	1	72084-A1	Nut-hex	1
64155-B	Grip-starter	1	A-65178	Filter Element	1	68257	Retainer-coil	1	80035	10-32 x 5/8	2
64224	Cover-metering	1	65179	Bearing-roller	1	A-68267-A	Handle-throttle	1	80040	10-32 x 7/8	1
64229	Needle-inlet	1	A-65181	Kit-spiked	1	68362-1A	Clutch	1	*80361-2	Screw	2
64231	Gasket-metering	1	A-65184	Valve-comp.	1	A-68415	Carburetor	1	80560	8-32 x 1/2	2
64238	Spring-choke	1	65185	Bushing-starter	1	68461	Jet-limiting	1	80567	8-32 x 3/4	3
64243	Screen-fuel inlet	1	65188	Spring-throttle	1	A-68469-2	Handle Bar	1	80571	10-32 x 3/8	4
64309	Pin-dowel	3	65189	Screen-air	1	A-68487	Piston & Pin	1	80577	8-32 x 3/8	4
64473	Grommet-handle	2	A-65203-A	Points-breaker	1	68508	Piston Ring	2	80630	6-32 x 1/2	1
64677	Spring-throttle	1	65205	Lead-hi tension	1	68512	Bearing-needle	1	80676	12-24 x 5/8	6
64813	Ring-piston pin	2	65206-A	Box-breaker	1	68701	Rotor-magneto	1	80704	10-32 x 5/8	4
64862	Grommet-choke	1	65209	Seal-breaker	1	68705	Seal-felt	1	80870	10-32 x 3/8	3
65006-2	Crankshaft	1	A-65210-A	Cover-breaker	1	A-68710	Points-breaker	1	80919	4-40 x 1/4	2
A-65009	Bearing-needle	1	65211	Seal-breaker	1	68711	Condenser	1	81010-1	Nut-10-32	3
65010	Seat-reed valve	1	A-65212-B	Pump-auto. oiler	1	68712	Lead Group	1	81065-2	Nut-1/4-28	4
65011-A	Retainer-reed	1	A-65214	Line-oil	1	68716	Coil & Core	1	81117	Nut-5/16-24	1
65012-A	Reed-valve	4	65217	Spring-clutch	3	68734-2	Bracket-handle	1	81196	Nut-5/16-18	2
65014-A	Gasket-reed	1	A-65222-1	Housing-rewind	1	68759	Grip-throttle	1	81206	Nut-10-32	1
65016	Gasket-carb.	1	65225	Ball-check	1	68770	Grip-throttle	1	82146	8-32 x 5/8	9
65017	Spring-check	1	A-65256	Spark Arrestor	1	68773-1	Seal-breaker box	1	82165	10-32 x 1-5/8	2
65018	Gasket-cylinder	1	65260	"O" Ring	1	68837-A	Insert-rope	1	82169	10-32 x 7/8	1
65019	Seal	2	A-65272	Nut-cover mouting	1	68848	Rope-starter	1	82187	8-32 x 7/16	1
65025	Bolt-guide bar	2	A-65275	Muffler	1	68852-2	Cover-throttle	1	82198	6-40 x 1	1
*65031-A	Trigger-throttle	1	*A-65284-B	Cap-oil filler	1	68920	Decal-starter	1	82248	8-32 x 3/4	2
65032	Plate-handle bar	1	65286	Condenser	1	68921	Decal-drivecase	1	82256	6 x 1/4	1
A-65033	Sprocket & Drum	1	65288-A	Rotor-magneto	1	A-68936	Carrying Case	1	82268	10-32 x 7/8	2
65035-3	Bracket-handle	1	65291	Lead Group	1	A-68950-1	Cap-muffler	1	83002	Washer-lock	1
65037-7	Tank-fuel & oil	1	65321	Screw-retaining	3	A-69260	Crankcase	1	83004-1	Washer-#6	1
65044-S	Bearing-ball	1	65386	Kit-check valve	1	69451	Valve-Check	1	83006-1	Washer-#10	2
65045	Ring-retaining	1	65746-A	Race-inner	1	69454	Filter-filler cap	1	83046	Washer-#10	4
65046	Gasket-fuel & oil	1	65892	Shoe-clutch	3	A-69500	Cap-fuel filler	1	84035	Washer	1
65047-A	Gear-worm	1	65985-A	Race-inner	1	69501	Gasket-fuel filler	1	84065-1	Washer-5/16	1
65056	Rod-throttle	1	A-65987	Hub & Drum	1	69502	Chain-bead	1	86301	Pin-cotter	1
65066-2	Cap-muffler	1	A-67050	Kit-repair	1	69503	Retainer-filler	1	86324	Pin-cotter	1

\* Denotes new parts

ALWAYS FURNISH MODEL AND SERIAL NUMBER WHEN ORDERING PARTS.