

PARTS LIST

HOMELITE[®]

CHAIN SAWS

SUPER



EZ

AUTOMATIC

AND

SUPER



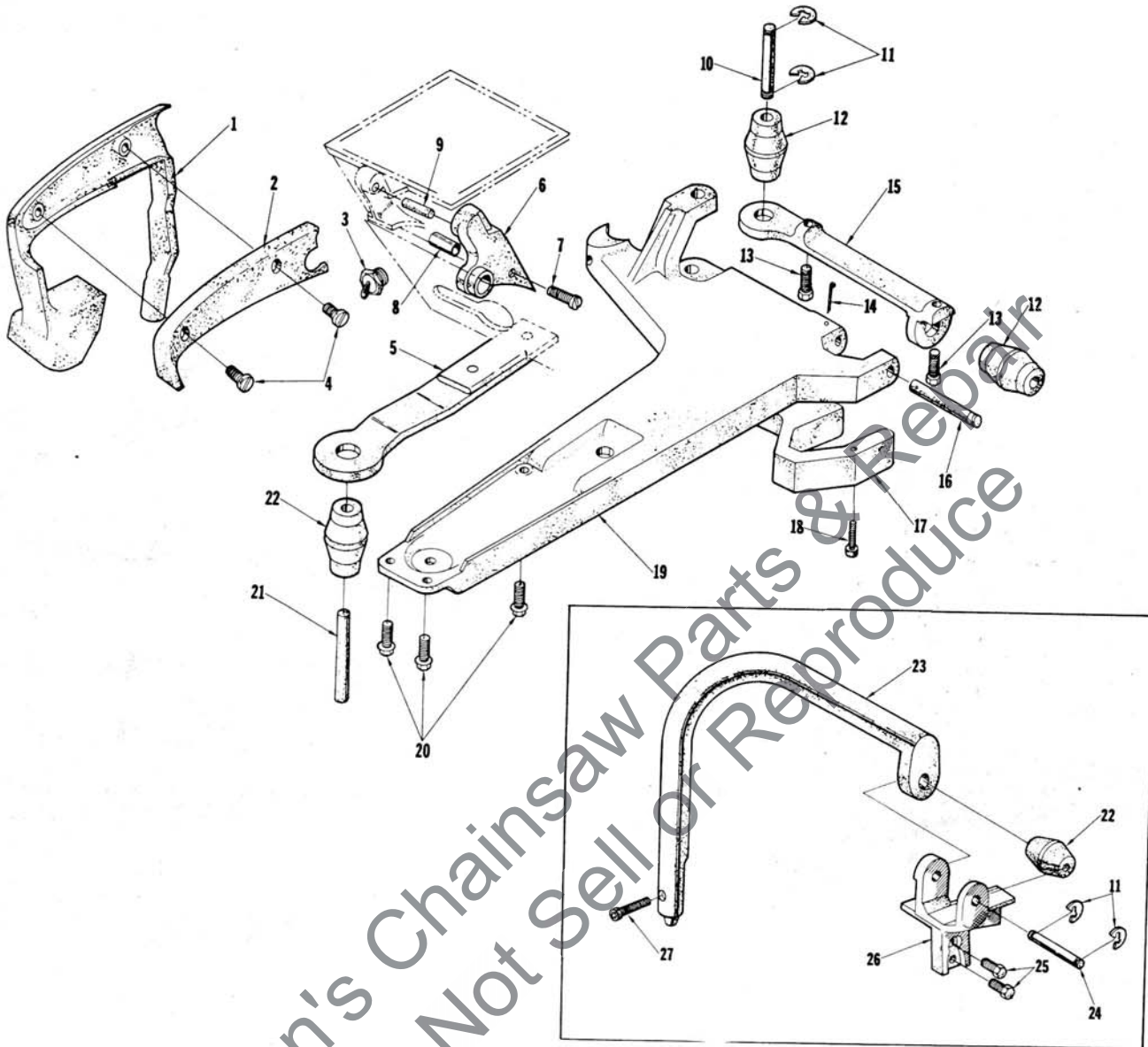
XL MINI AUTOMATIC & FP

PRICE .35

PART NO. 24522 - A

FLOATING POWER

PARTS GROUP



| No. | Description | Part No. | Qty. |
|-----|------------------------------------|----------|------|
| 1 | HANDLE-vibration mount base | 67775-2 | 1 |
| 2 | COVER-vibration mount base handle | 67786-1 | 1 |
| 3 | SWITCH-toggle | A-67817 | 1 |
| 4 | SCREW-pan hd. Spinlock, 8-32 x 1/2 | 80560 | 2 |
| 5 | CHAMBER-carburetor (w/connector) | A-68761 | 1 |
| 6 | RETAINER-throttle trigger | A-68028 | 1 |
| | Includes: | | |
| 7 | SCREW-fil hd., 6-32 x 1-1/4 | 82190 | 1 |
| 8 | SPACER | 68436 | 1 |
| | BUSHING (not shown) | 67752 | 1 |
| 9 | PIN | 67924 | 1 |
| 10 | PIN-retaining | 67783 | 1 |
| 11 | "E" RING | 67857 | 4 |
| 12 | MOUNT-vibration isolator | 67974 | 2 |
| 13 | SCREW-Spinlock, 10-32 x 3/4 | 80583 | 2 |

| No. | Description | Part No. | Qty. |
|-----|------------------------------------|-----------|------|
| 14 | PIN-cotter | 86317 | 1 |
| 15 | BRACKET-vibration mount | 67780-2 | 1 |
| 16 | PIN-retaining | 67782 | 1 |
| 17 | SKID | 68740-2 | 1 |
| 18 | SCREW-fil hd. cap, 6-32 x 5/8 | 80461-1 | 4 |
| 19 | BASE-vibration mount | 67774-2 | 1 |
| 20 | SCREW-Spinlock, 12-24 x 5/8 | 80676 | 3 |
| 21 | PIN-retaining | 67784 | 1 |
| 22 | MOUNT-vibration isolator | 67868 | 2 |
| 23 | HANDLE BAR | A-67889-1 | 1 |
| 24 | PIN-retaining | 67785 | 1 |
| 25 | SCREW-Spinlock, 10-32 x 5/8 | 80704 | 2 |
| 26 | BRACKET-handle bar | 67776-2 | 1 |
| 27 | SCREW-soc. hd. cap, 1/4-20 x 1-1/8 | 80954 | 1 |

Super EZ Automatic & Super XL Mini Automatic

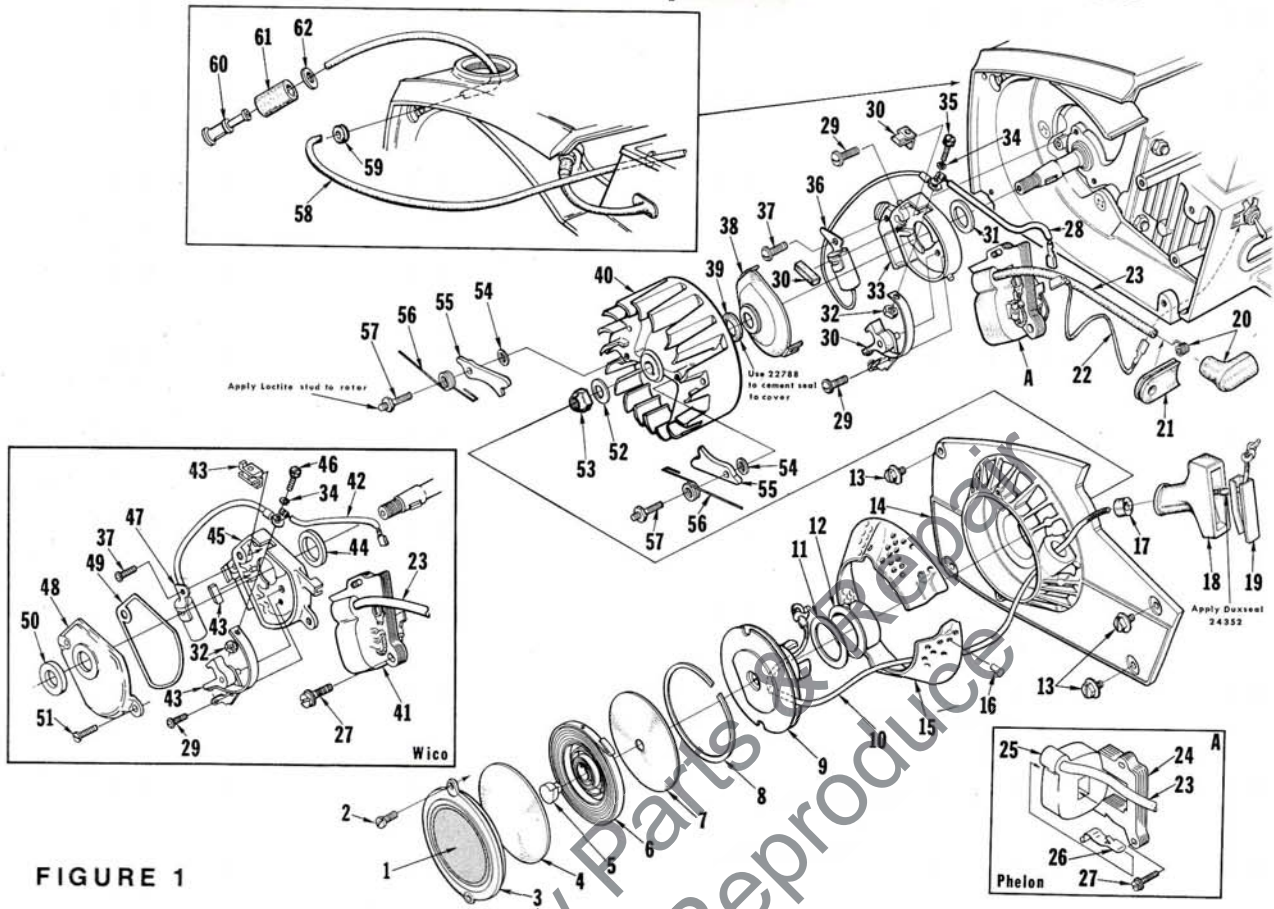


FIGURE 1

| No. | Description | Part No. | Qty. | No. | Description | Part No. | Qty. |
|-----|------------------------------------|---------------|------|-----|------------------------------|---------------|----------|
| * 1 | DECAL-starter cover (EZ Auto) | 65920 | 1 | 34 | WASHER-lock, #6 | 83004-1 | 1 |
| * 2 | DECAL-starter cover (XL Mini Auto) | 65906 | 1 | 35 | SCREW-hex, 6-32 x 7/16 | (P) 67628 | 1 |
| 2 | SCREW-pan, 8-32 x 3/8 | 80677 | 2 | 36 | CONDENSER | (P) 65286 | 1 |
| 3 | COVER-starter | 65095-2 | 1 | 37 | SCREW-pan, 6-32 x 1/2 | 80630 | 1 |
| 4 | SHIELD-spring (inner) | 65113 | 1 | 38 | COVER-breaker box | (P) A-65210-A | 1 |
| 5 | LOCK-spring | 65102 | 1 | 39 | Includes: SEAL-felt | (P) 65211 | 1 |
| 6 | SPRING-rewind | 65107 | 1 | 40 | ROTOR-magneto | (P) 65288 | 1 |
| 7 | SHIELD-spring (outer) | 65114 | 1 | | ROTOR-magneto | (W) 68701 | 1 |
| 8 | RING-retaining | 65125 | 1 | 41 | COIL & CORE | (W) 68716 | 1 |
| 9 | PULLEY & CUP | A-65170 | 1 | 42 | LEAD GROUP-primary | (W) 68712 | 1 |
| 10 | ROPE-starter, 46" | 65118 | 1 | 43 | POINTS-breaker | (W) A-68710 | 1 |
| 11 | SHIELD-pulley | 67893 | 1 | | Includes: | | |
| 12 | BUSHING-starter cup | 65116 | 1 | 44 | SEAL-felt | (W) 68705 | 1 |
| 13 | SCREW-hex, 10-32 x 5/8 | 80704 | 4 | | WASHER-thrust (not shown) | (W) 28028 | as req'd |
| 14 | HOUSING-rewind starter | A-65222-1 | 1 | | LOCK-breaker arm (not shown) | (W) 28008 | 1 |
| | Includes: | | | 45 | BOX-breaker | (W) 68708 | 1 |
| 15 | SCREEN-air inlet | 65189 | 1 | 46 | SCREW-hex, 6-32 x 1/2 | (W) 68700 | 1 |
| 16 | STUD-drive #2 | 67191 | 3 | 47 | CONDENSER | (W) 68711 | 1 |
| 17 | BUSHING-starter rope | 65185 | 1 | 48 | COVER-breaker box | (W) A-68704 | 1 |
| 18 | GRIP-starter rope | 65183 | 1 | | Includes: | | |
| 19 | INSERT-rope retaining | 68837 | 1 | 49 | GASKET-breaker box cover | (W) 68774 | 1 |
| 20 | TERMINAL-spark plug | A-33055 | 1 | 50 | SEAL-felt | (W) 68773 | 1 |
| 21 | GROMMET-hi-tension lead | 65135 | 1 | 51 | SCREW-cover mounting | (W) 68715 | 2 |
| 22 | LEAD-ground | A-63939 | 1 | 52 | WASHER-flat, 5/16 | 84065-1 | 1 |
| 23 | LEAD-hi-tension | 65205 | 1 | 53 | NUT-hex, 5/16-24 | 81112 | 1 |
| 24 | CORE-coil | (P) 68255 | 1 | 54 | WASHER-starter pawl | 65110 | 2 |
| 25 | COIL-ignition | (P) 68256 | 1 | 55 | PAWL-starter | 65108 | 2 |
| 26 | RETAINER-coil | (P) 68257 | 1 | 56 | SPRING-starter pawl | 65120 | 2 |
| 27 | SCREW-coil core | 64021 | 2 | 57 | STUD-starter pawl | 65109 | 2 |
| 28 | LEAD GROUP-primary | (P) 65291 | 1 | 58 | LINE-fuel | A-68053 | 1 |
| 29 | SCREW-pan, 6-32 x 3/8 | 80571 | 2 | 59 | Includes: GROMMET | 68046 | 1 |
| 30 | POINTS-breaker | (P) A-65203-A | 1 | 60 | FILTER-fuel | A-63920 | 1 |
| 31 | Includes: SEAL-felt | (P) 65209 | 1 | 61 | Includes: FILTER-felt | 64083-1 | 1 |
| 32 | NUT-hex | 65207 | 1 | 62 | WASHER | 64182 | 1 |
| 33 | BOX-breaker | (P) 65206-A | 1 | | | | |

* Denotes new parts (P) Phelon (W) Wico

Complete magneto must be either Wico or Phelon. Phelon and Wico parts are not individually interchangeable.

Super EZ Automatic & Super XL Mini Automatic

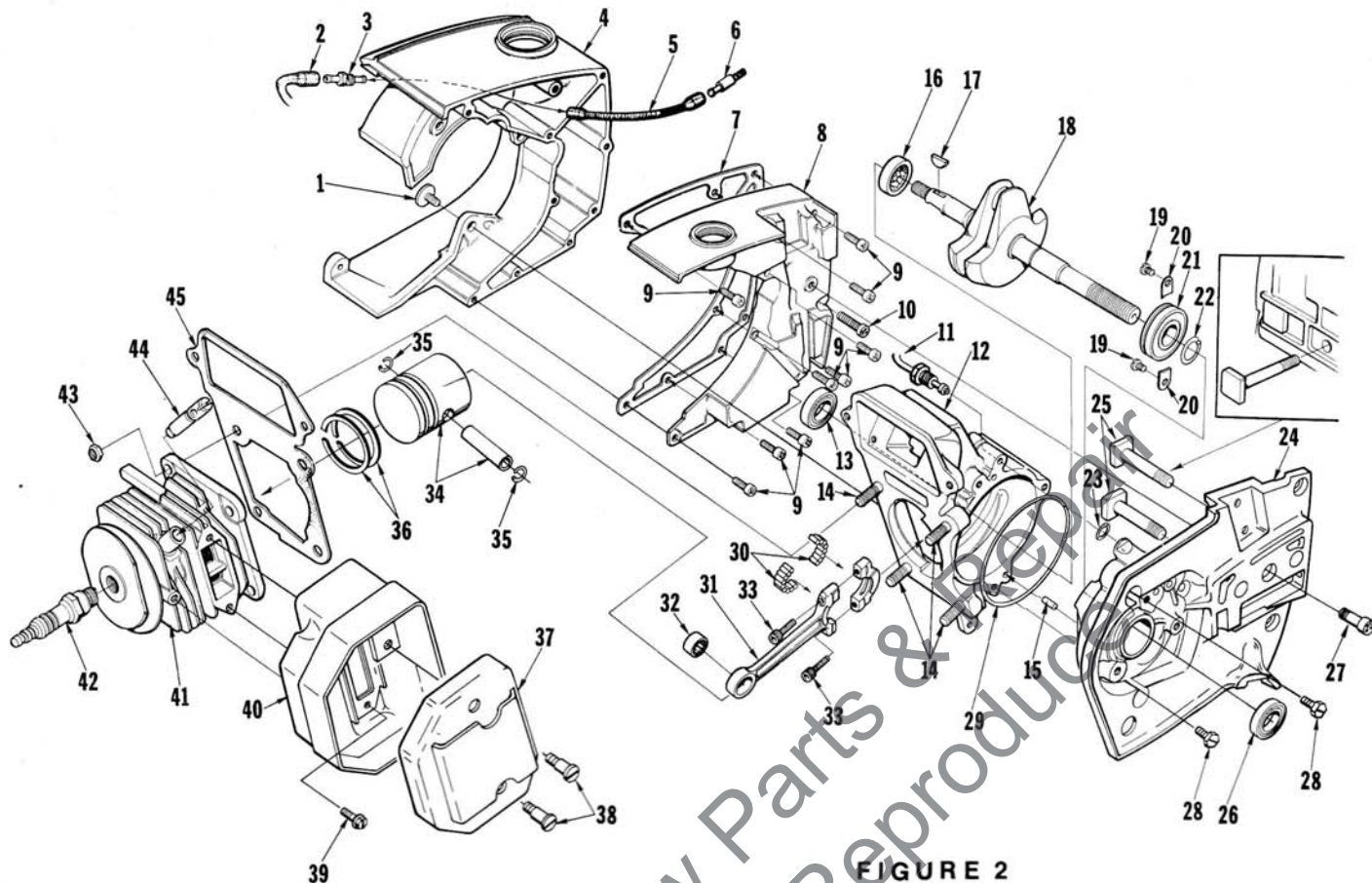


FIGURE 2

| No. | Description | Part No. | Qty. | No. | Description | Part No. | Qty. |
|-----|-------------------------------|-----------|------|-----|------------------------------|-----------|------|
| 1 | SCREW-retaining | 65321 | 3 | 28 | SCREW-hex, 12-24 x 5/8 | 80676 | 3 |
| 2 | LINE-oil | 65137 | 1 | 29 | "O" RING | 65127 | 1 |
| 3 | FITTING-oil line | 65138 | 1 | 30 | BEARING-needle (set of 28) | A-67971 | 1 |
| 4 | TANK-fuel & oil | 65037-2 | 1 | 31 | ROD-connecting | A-68051 | 1 |
| 5 | LINE-oil (pick up) | 58340-B | 1 | | Includes: | | |
| 6 | FILTER-oil | A-65172 | 1 | 32 | BEARING-needle | 68512 | 1 |
| 7 | GASKET-fuel & oil tank | 65046 | 1 | 33 | SCREW-soc, 8-32 x 9/16 | 80805 | 2 |
| 8 | COVER-fuel & oil tank | 65115-2 | 1 | 34 | PISTON & PIN | A-68487 | 1 |
| 9 | SCREW-fil, 8-32 x 5/8 | 82146 | 9 | | Includes: | | |
| 10 | SCREW-fil, 8-32 x 1-7/16 | 82187 | 1 | 35 | RING-piston pin retaining | 64813 | 2 |
| 11 | LINE-oil | A-65214 | 1 | 36 | PISTON RING | 68508 | 2 |
| 12 | CRANKCASE | A-65202-A | 1 | *37 | CAP-muffler w/shield | A-68950-1 | 1 |
| | Includes: | | | 38 | SCREW-shoulder | 64133-A | 2 |
| 13 | SEAL | 65019 | 1 | 39 | SCREW-hex, 10-32 x 3/8 | 80870 | 3 |
| 14 | STUD-cylinder | 55871 | 4 | 40 | BODY-muffler | A-65152-2 | 1 |
| 15 | PIN-dowel | 65153 | 1 | | MUFFLER-diffuser (not shown) | | |
| 16 | BEARING-roller | 65179 | 1 | | (Note 1) | † A-68254 | 1 |
| 17 | KEY-woodruff | 65126 | 1 | | Includes: | | |
| 18 | CRANKSHAFT | 65006-2 | 1 | | CAP-muffler | † 68253-1 | 1 |
| 19 | SCREW-bearing retaining | 59704 | 2 | | plus items # 38, 39, 40 | | |
| 20 | WASHER-lock special | 63905 | 2 | | MUFFLER (not shown) | † A-65275 | 1 |
| 21 | BEARING-ball | 65044-S | 1 | | Includes: | | |
| 22 | RING-retaining | 65045 | 1 | | CAP-muffler | † 65066-1 | 1 |
| 23 | "O" RING | 59074 | 1 | | BAFFLE-muffler | † 65067 | 1 |
| 24 | DRIVECASE | A-65200-A | 1 | | Plus items #38, 39 & 40 | | |
| | Includes: | | | 41 | CYLINDER-1-9/16 dia (Note 2) | A-67874-3 | 1 |
| 25 | BOLT-guide bar | 65025 | 2 | 42 | SPARK PLUG | 65130-S | 1 |
| 26 | SEAL | 65019 | 1 | 43 | NUT-hex, 1/4-28 | 81065-2 | 4 |
| 27 | SCREW-fil, drivecase retainer | 65157 | 1 | 44 | VALVE-compression release | A-65184 | 1 |
| | * Denotes new parts | | | 45 | GASKET-cylinder | 65018 | 1 |
| | † Optional | | | | | | |

Note 1 - For units with Reed type Muffler, the following are still available: STOP-67413-1A, STUDS-68103-1, BAFFLE-67736, REED-67394 and NUTS-81109-2.

Note 2 - A-67874-3 Cylinder must be used with A-65202-A Crankcase and A-65200-A Drivecase for units built after S/N 13141393.

Super EZ Automatic & Super XL Mini Automatic

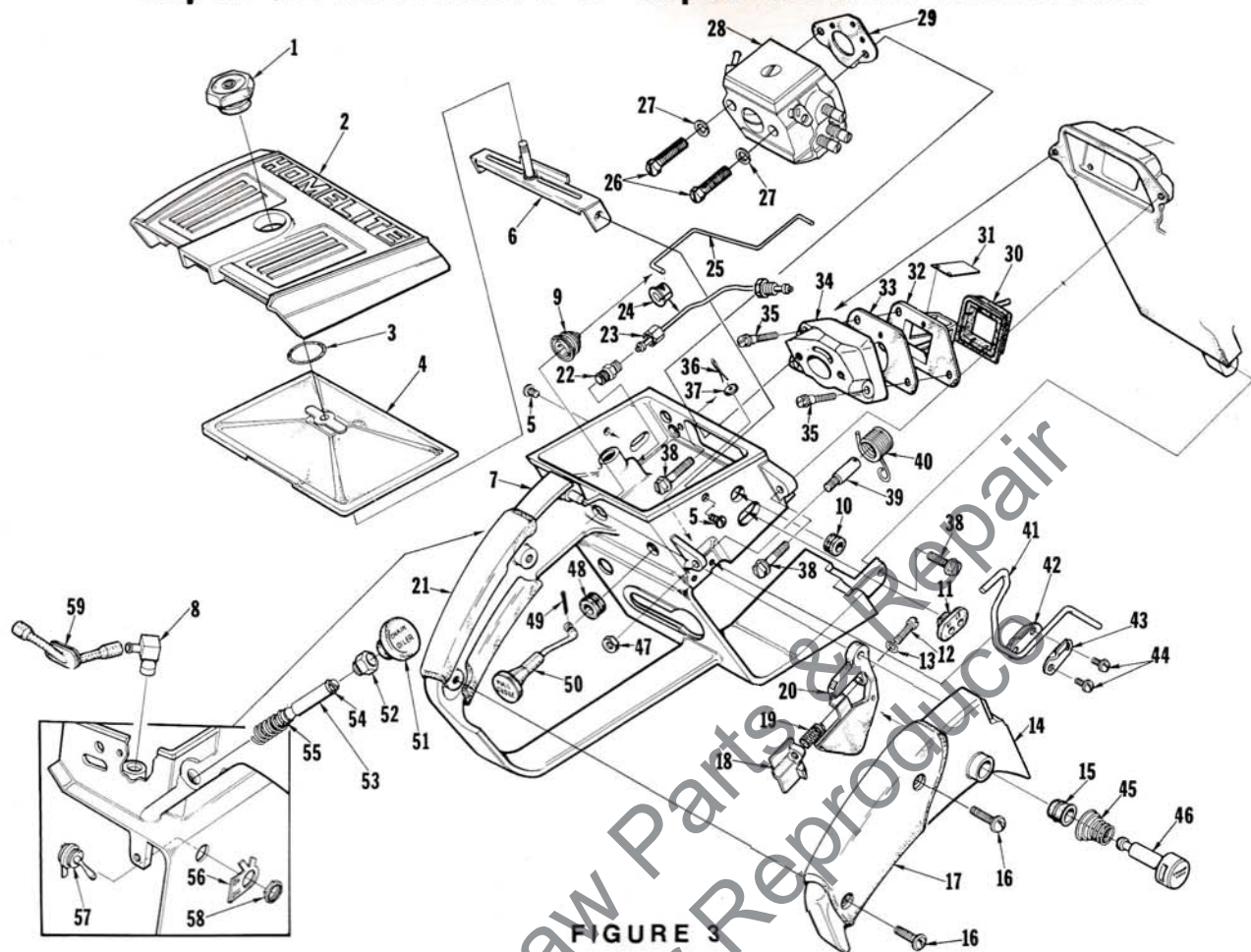


FIGURE 3

| No. | Description | Part No. | Qty. | No. | Description | Part No. | Qty. |
|-----|----------------------------------|-----------|------|-----|------------------------|------------|------|
| 1 | NUT-cover mounting | A-65272 | 1 | 29 | GASKET-carburetor | 65016 | 1 |
| 2 | COVER-air filter | 65096-5 | 1 | 30 | RETAINER-reed valve | 65011-A | 1 |
| 3 | RING-retaining | 58319-A | 1 | 31 | REED-valve | 65012-A | 4 |
| 4 | FILTER ELEMENT-air | A-65178 | 1 | 32 | SEAT-reed valve | 65010 | 1 |
| 5 | SCREW-pan, 8-32 x 3/8 | 80577 | 2 | 33 | GASKET-reed valve seat | 65014 | 1 |
| 6 | BRACKET-air filter cover | A-65123 | 1 | 34 | MANIFOLD-intake | A-65154-1A | 1 |
| 7 | HANDLE-throttle (FP on page 2) | A-68267-A | 1 | 35 | SCREW-shoulder | 64349-A | 3 |
| | Includes: | | | 36 | PIN-cotter, 1/16 x 1/2 | 86301 | 1 |
| 8 | VALVE-check (inlet) | A-65076 | 1 | 37 | WASHER-felt | 63290 | 1 |
| 9 | BOOT-throttle rod | 67634 | 1 | 38 | SCREW-hex, 12-24 x 5/8 | 80676 | 3 |
| 10 | GROMMET-idle adjusting | 68197 | 1 | 39 | POST-spring | 65023 | 1 |
| 11 | GROMMET-"hi-lo" | 68196 | 1 | 40 | SPRING-release valve | 65174 | 1 |
| | LINE-fuel (shown on Fig. 1) | A-68053 | 1 | 41 | LEVER-release | 65173 | 1 |
| | Includes: GROMMET (Fig. 1) | 68046 | 1 | 42 | PLATE-lever | 65092 | 1 |
| 12 | SCREW-pan, 6-40 x 1 | 82198 | 1 | 43 | CLAMP-lever | 65093 | 1 |
| 13 | "O" RING | 65260 | 1 | 44 | SCREW-pan, 6-32 x 3/8 | 80571 | 2 |
| 14 | COVER-throttle handle (See Note) | 68852-2 | 1 | 45 | SPRING-throttle latch | 64677 | 1 |
| 15 | BUSHING | 67752 | 1 | 46 | PIN-throttle latch | 65171-A | 1 |
| 16 | SCREW-pan, 8-32 x 1/2 | 80560 | 2 | 47 | NUT-hex, #6-32 | 81126 | 1 |
| 17 | GRIP-throttle handle cover | 68759 | 1 | 48 | GROMMET-choke | 64862 | 1 |
| 18 | STOP-throttle adjustment | 65147-A | 1 | 49 | PIN-cotter, 1/32 x 1/2 | 86324 | 1 |
| 19 | SPRING-throttle stop | 65188 | 1 | 50 | ROD-choke | 65072-1 | 1 |
| 20 | TRIGGER-throttle | 65031-1 | 1 | 51 | BUTTON-oil pump | 65084 | 1 |
| 21 | GRIP-throttle handle | 68770 | 1 | 52 | NUT-plunger | 65082 | 1 |
| 22 | VALVE-check (outlet) | A-65077 | 1 | 53 | PLUNGER-oil pump | A-68061-A | 1 |
| 23 | LINE-oil | A-65214 | 1 | 54 | Includes: "O" RING | 59074 | 1 |
| 24 | GROMMET-oil line | 65085 | 1 | 55 | "O" RING | 58406 | 1 |
| 25 | ROD-throttle | 65056 | 1 | 56 | PLATE-"on-off" | 63910 | 1 |
| 26 | SCREW-hex, 10-32 x 1-5/8 | 82165 | 2 | 57 | SWITCH-grounding | A-63938 | 1 |
| 27 | WASHER-lock, #10 | 83046 | 2 | 58 | Includes: NUT-hex | 72084-A1 | 1 |
| 28 | CARBURETOR- (HDC-4) | A-68415 | 1 | 59 | LINE-oil | 65137 | 1 |

Note - 65042-3B Cover for Throttle Handle is to be used for units without Grips.

Super EZ Automatic & Super XL Mini Automatic

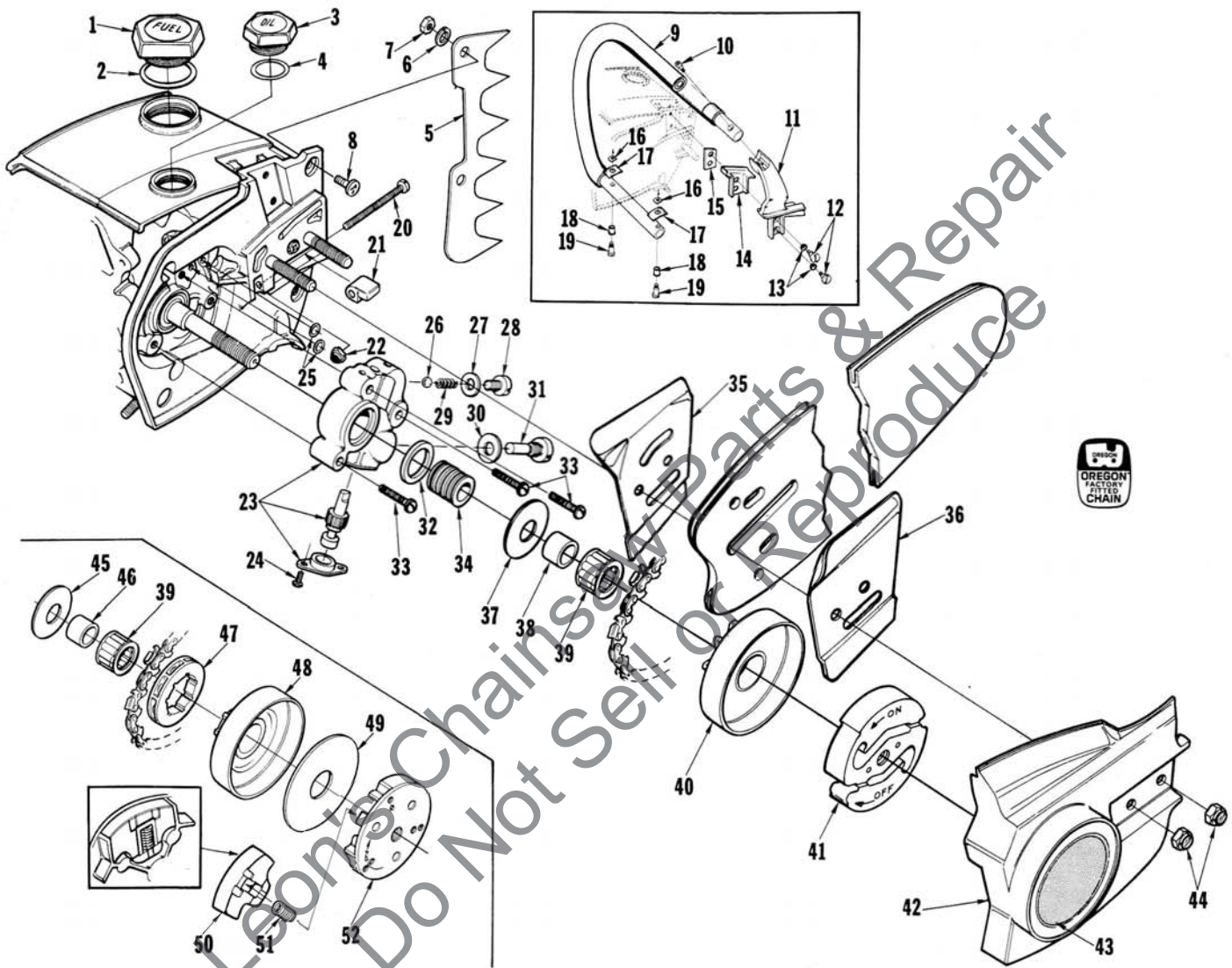


FIGURE 4

Super EZ Automatic & Super XL Mini Automatic

| No. | Description | Part No. | Qty. | No. | Description | Part No. | Qty. |
|-----|--------------------------------------|-------------|------|------|--|------------|------|
| * 1 | CAP-fuel filler | A-65283-B | 1 | 33 | SCREW-pan, 8-32 x 3/4 | 80567 | 3 |
| | Includes: | | | 34 | WORM-oil pump | 65047-A | 1 |
| | VALVE-check (not shown) | 63718 | 1 | 35 | PLATE-guide bar (inner) | 63638-B | 1 |
| * 2 | GASKET-fuel filler cap | 68961 | 1 | 36 | PLATE-guide bar (outer) | 63639-A | 1 |
| 3 | CAP-oil filler (vented) | A-65284-A | 1 | 37 | WASHER-thrust (outer) | 65064 | 1 |
| | Includes: | | | 38 | RACE-inner | 65746 | 1 |
| | VALVE-check (not shown) | 63718 | 1 | 39 | BEARING-needle | 64124 | 1 |
| 4 | "O" RING | 65133 | 1 | 40 | SPROCKET & DRUM | A-65033 | 1 |
| 5 | KIT-spiked bumper (accessory) | † A-65181 | 1 | 41 | CLUTCH-"S" (Note 3) | 68362-1 | 1 |
| | Includes: | | | 42 | COVER-drivecase | 65131-1 | 1 |
| 6 | WASHER-lock, #10 | † 83006-1 | 2 | * 43 | DECAL-drivecase cover (EZ Auto) | 68921 | 1 |
| 7 | NUT-hex, 10-32 | † 81010-1 | 2 | * 44 | DECAL-drivecase cover (XL Mini Auto) | 68907 | 1 |
| 8 | SCREW-flat, 10-32 x 5/8 | † 80035 | 2 | 44 | NUT-hex, 3/16-18 | 81196 | 2 |
| * 9 | HANDLE BAR-flush cut (FP on page 2) | A-69024-1 | 1 | 45 | WASHER-thrust (outer) for rimmed sprocket (Note 2) | † 65027 | 1 |
| | HANDLE BAR-full wrap-around (Note 1) | † A-68469-2 | 1 | 46 | RACE-inner (Note 2) | † 65985 | 1 |
| 10 | SCREW-soc, 10-32 x 7/8 | 82169 | 1 | 47 | SPROCKET-rim type (3/8, 7 tooth) (Note 2) | † OM-68210 | 1 |
| 11 | BRACKET-handle bar | 68734-2 | 1 | 48 | HUB & DRUM (Note 2) | † A-65987 | 1 |
| | BRACKET-handle bar (Note 1) | † 65035-3 | 1 | 49 | WASHER-thrust (inner) (Note 3) | † 65024-1 | 1 |
| 12 | SCREW-shoulder | 64613-A | 2 | 50 | WASHER-thrust (inner) (Note 2) | † 58833-1 | 1 |
| 13 | GROMMET-handle bar | 64473 | 2 | 51 | SHOE-clutch (Note 3) | † 65892 | 3 |
| 14 | MOUNT-shock | 65111 | 1 | 52 | SPRING-clutch (Note 3) | † 65217 | 3 |
| 15 | PLATE-handle bar bracket | 65032 | 1 | | PLATE-clutch (aluminum) (Note 3) | † 65146-1 | 1 |
| 16 | PLATE-handle bar | 65670 | 2 | | PLATE-clutch (steel) (Note 3) | † 67855-1 | 1 |
| 17 | PAD-rubber | 65124 | 2 | | | | |
| 18 | GROMMET | 65122 | 2 | | | | |
| 19 | SCREW-shoulder | 65121 | 2 | | | | |
| 20 | SCREW-guide bar adjusting | 65175-A | 1 | | | | |
| 21 | PIN-bar adjusting | 65112-1 | 1 | | | | |
| 22 | NUT-flexlock, 10-32 | 81109-2 | 1 | | | | |
| 23 | PUMP-automatic oil | A-65212 | 1 | | | | |
| | Includes: | | | | | | |
| 24 | SCREW-pan, 4-40 x 1/4 | 80919 | 2 | | | | |
| 25 | "O" RING | 59074 | 2 | | | | |
| 26 | BALL | 65225 | 1 | | | | |
| 27 | GASKET-check valve | 65144 | 1 | | | | |
| 28 | CAP-check valve | A-68207 | 1 | | | | |
| | Includes: | | | | | | |
| 29 | SPRING-check valve | 65017 | 1 | | | | |
| 30 | GASKET | 65145 | 1 | | | | |
| 31 | SCREW-cam | 65136 | 1 | | | | |
| 32 | SEAL | 65142 | 1 | | | | |

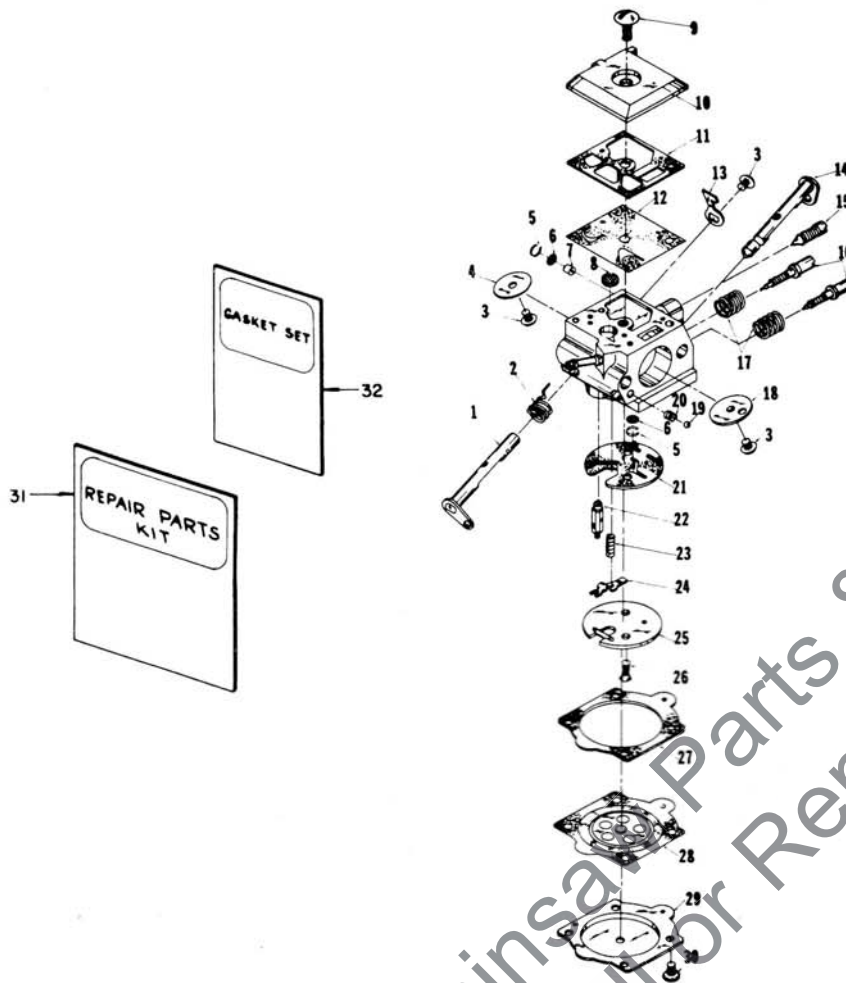
* Denotes new parts † Optional

Note 1 - Use 65035-3 Bracket when using A-68469-2 Handle Bar

Note 2 - When using A-65987 Drum & Hub - Index numbers 45, 46, 47 and 49 are required.

Note 3 - Units with 3-piece clutch include items #50, 51 & 52 and require index #49 - 65024-1 (inner) Thrust Washer.

Super EZ Automatic & Super XL Mini Automatic



HDC - 4
Supersedes
HDC - 1
&
HDC - 2

A-68415 HDC-4

| No. | Description | Part No. | Qty. | No. | Description | Part No. | Qty. |
|------|-------------------------|----------|------|------|---------------------------|----------|------|
| 1 | SHAFT-throttle | 67362 | 1 | 18 | VALVE-choke | 67365 | 1 |
| † 2 | SPRING-throttle return | 67376 | 1 | † 19 | BALL-choke friction | 60051 | 1 |
| † 3 | SCREW-valve | 67372 | 3 | † 20 | SPRING-choke friction | 64238 | 1 |
| 4 | VALVE-throttle | 67363 | 1 | ‡ 21 | GASKET-circuit | 67367 | 1 |
| † 5 | RING-screen retaining | 67360 | 2 | † 22 | VALVE-inlet needle | 64229 | 1 |
| † 6 | SCREEN-check valve | 67381 | 2 | † 23 | SPRING-metering lever | 67378 | 1 |
| 7 | JET-limiting | 68461 | 1 | † 24 | LEVER-metering | 67383 | 1 |
| † 8 | SCREEN-fuel inlet | 64243 | 1 | 25 | PLATE-circuit | 67382 | 1 |
| 9 | SCREW-fuel pump | 67374 | 1 | 26 | SCREW-circuit plate | 67375 | 2 |
| 10 | COVER-fuel pump | 67361 | 1 | ‡ 27 | GASKET-metering diaphragm | 64231 | 1 |
| ‡ 11 | GASKET-fuel pump | 67368 | 1 | † 28 | DIAPHRAGM-metering | 67371 | 1 |
| † 12 | DIAPHRAGM-fuel pump | 67370 | 1 | 29 | COVER-metering diaphragm | 64224 | 1 |
| 13 | STOP-throttle | 67366 | 1 | 30 | SCREW-metering cover | 64689 | 4 |
| 14 | SHAFT-choke | 67364 | 1 | 31 | REPAIR KIT | 67384 | 1 |
| 15 | SCREW-idle adjustment | 67373 | 1 | † 32 | GASKET SET | 67369 | 1 |
| † 16 | NEEDLE-idle adjustment | 67379 | 2 | | REPAIR KIT | 65386 | 1 |
| † 17 | SPRING-needle adjusting | 67377 | 2 | | | | |

† Indicates contents of Repair Kit #67384

‡ Indicates contents of Gasket Set

Super EZ Automatic & Super XL Mini Automatic

Tools

| | | |
|-----------|--|-----|
| 24299 | ANVIL-crankshaft installation | |
| 24320 | BIT- #3 pozidriv | |
| 24295 | COLLAR-bearing installation | |
| 24173 | DRIVER-check valve (carburetor) | |
| A-24309 | JACKSCREW | |
| | Includes: | |
| 84035-1 | WASHER | |
| 24298 | PLUG-bearing & seal installation | |
| 23756 | PLUG-bearing installation | |
| 24294 | PLUG-needle bearing installation | |
| 24292 | PLUG-seal & bearing removal | |
| A-24290 | PULLER-magneto rotor | |
| | Includes: | |
| 24301 | SCREW-rotor remover | (4) |
| 67912 | RING-retaining | (4) |
| 23136-1 | SLEEVE-bearing & shaft installation | |
| 24300 | SLEEVE-crankshaft bearing installation | |
| 24297 | SLEEVE-seal protecting (crankcase) | |
| 24291 | SLEEVE-seal (drivecase) | |
| A-24060 | WRENCH-clutch (spanner) (3 piece) | |
| | Includes: | |
| 64309 | PIN-dowel | (3) |
| A-24284 | WRENCH-combination | |
| A-23696-A | WRENCH-spanner ("S" clutch) | |
| | Includes: | |
| 23717-A | PIN-clutch spanner | (2) |

Super EZ Automatic & Super XL Mini Automatic

Paint

| | |
|-------|-----------------|
| 22772 | SPRAY CAN-black |
| 23475 | SPRAY CAN-red |
| 23560 | SPRAY CAN-white |

Accessories

| | |
|-----------|---|
| A-68936 | CARRYING CASE |
| 24352 | COMPOUND-sealing (Duxseal) |
| *A-68955 | KIT-anti-kickback guard |
| A-24338 | KIT-fasteners |
| A-24336 | KIT-filter |
| A-24276 | KIT-guide bar plate |
| A-67947 | KIT-heat exchanger |
| A-24365-A | KIT-ignition (Phelon) units above S/N 91600198 |
| A-24337-A | KIT-ignition (Phelon) units below S/N 91600198 |
| A-24481 | KIT-ignition (Wico) |
| 23488-B | KIT-Loctite |
| A-67050 | KIT-repair (Sprocket Nose Bars) |
| A-24335-A | KIT-starting rope |
| A-67802 | KIT-throttle adj. stop units below S/N 93380678 |
| 68848 | ROPE-starter, 250' reel #4 |
| A-65256 | SPARK ARRESTOR ASSEMBLY |

* Denotes new parts

Super EZ Automatic & Super XL Mini Automatic

| Part No. | Description | Qty. | Part No. | Description | Qty. | Part No. | Description | Qty. | Part No. | Description | Qty. |
|-----------|------------------------|------|------------|--------------------|------|------------|------------------------|------|-----------------|-----------------|------|
| 22772 | Spray Can-black | 1 | 65027 | Washer-outer | 1 | A-65210-A | Cover-bkr. box | 1 | A-68207 | Cap-check valve | 1 |
| 23136-1 | Sleeve | 1 | 65031-1 | Trigger | 1 | 65211 | Seal-felt | 1 | OM68210 | Sprocket | 1 |
| 23475 | Spray Can-red | 1 | 65032 | Plate | 1 | A-65212 | Pump-auto oil | 1 | 68253-1 | Cap-muffler | 1 |
| 23488-B | Kit-Loctite | 1 | A-65033 | Sprocket & Drum | 1 | A-65214 | Line-oil | 1 | A-68254 | Muffler | 1 |
| 23560 | Spray Can-white | 1 | 65035-3 | Bracket | 1 | 65217 | Spring-clutch | 3 | 68255 | Core-coil | 1 |
| A-23696-A | Wrench-spanner | 1 | 65037-2 | Tank-fuel & oil | 1 | A-65222-1 | Housing-starter | 1 | 68256 | Coil-ignition | 1 |
| 23717-A | Pin-clutch(spanner) | 2 | 65044-S | Bearing-ball | 1 | 65225 | Ball | 1 | 68257 | Retainer-coil | 1 |
| 23756 | Plug-needle bearing | 1 | 65045 | Ring-retaining | 1 | A-65256 | Spark Arrestor | 1 | A-68267-A | Handle-throttle | 1 |
| A-24060 | Wrench-spanner | 1 | 65046 | Gasket | 1 | 65260 | "O" Ring | 1 | 68362-1 | Clutch-"S" | 1 |
| 24173 | Driver-check valve | 1 | 65047-A | Worm-oil pump | 1 | A-65272 | Nut | 1 | A-68415 | Carburetor | 1 |
| A-24276 | Guide Bar Plate Set | 1 | 65056 | Rod-throttle | 1 | A-65275 | Muffler | 1 | 68436 | Spacer | 1 |
| A-24284 | Wrench | 1 | 65064 | Washer-outer | 1 | *A-65283-B | Cap-fuel | 1 | 68461 | Jet-limiting | 1 |
| A-24290 | Puller-rotor | 1 | 65066-1 | Cap-muffler | 1 | A-65284-A | Cap-oil | 1 | A-68469-2 | Handle Bar | 1 |
| 24291 | Sleeve-seal | 1 | 65067 | Baffle-muffler | 1 | 65286 | Condenser | 1 | A-68487 | Piston & Pin | 1 |
| 24292 | Plug-seal | 1 | 65072-1 | Rod-choke | 1 | 65288 | Rotor-magneto | 1 | 68508 | Piston Ring | 2 |
| 24294 | Plug | 1 | A-65076 | Valve-check | 1 | 65291 | Lead-primary | 1 | 68512 | Bearing-needle | 1 |
| 24295 | Collar-bearing | 1 | A-65077 | Valve-outlet | 1 | 65321 | Screw | 6 | 68700 | Screw-hex | 1 |
| 24297 | Sleeve-seal | 1 | 65082 | Nut-plunger | 1 | 65386 | Repair Kit | 1 | 68701 | Rotor-magneto | 1 |
| 24298 | Plug-bearing & seal | 1 | 65084 | Button-oil pump | 1 | 65670 | Plate-handle bar | 2 | A-68704 | Cover-bkr. box | 1 |
| 24299 | Anvil | 1 | 65085 | Grommet-oil line | 1 | 65746 | Race-inner | 1 | 68705 | Seal-felt | 1 |
| 24300 | Sleeve | 1 | 65092 | Plate-lever | 1 | 65892 | Shoe-clutch | 3 | 68708 | Box-breaker | 1 |
| 24301 | Screw-rotor remover | 4 | 65093 | Clamp-lever | 1 | 65985 | Race-inner | 1 | A-68710 | Points-breaker | 1 |
| A-24309 | Jackscrew | 1 | 65095-2 | Cover-starter | 1 | A-65987 | Hub & Drum | 1 | 68711 | Condenser | 1 |
| 24320 | Bit-#3 | 1 | 65096-5 | Cover-air filter | 1 | A-67050 | Kit-repair | 1 | 68712 | Lead Group | 1 |
| A-24335-A | Kit-starting rope | 1 | 65102 | Lock-spring | 1 | 67191 | Stud-drive #2 | 3 | 68715 | Screw | 2 |
| A-24336 | Kit-filter | 1 | 65107 | Spring-rewind | 1 | 67360 | Ring-screen | 2 | 68716 | Core & Coil | 1 |
| A-24337-A | Kit-ignition | 1 | 65108 | Pawl-starter | 2 | 67361 | Cover-fuel pump | 1 | 68734-2 | Bracket | 1 |
| A-24338 | Kit-fasteners | 1 | 65109 | Stud-pawl | 2 | 67362 | Shaft-throttle | 1 | 68740-2 | Skid | 1 |
| 24352 | Compound-sealing | 1 | 65110 | Washer-pawl | 2 | 67363 | Valve-throttle | 1 | 68759 | Grip | 1 |
| A-24365-A | Kit-ignition | 1 | 65111 | Mount-shock | 1 | 67364 | Shaft-choke | 1 | A-68761 | Chamber-carb. | 1 |
| A-24481 | Kit-ignition | 1 | 65112-1 | Pin-guide bar | 1 | 67365 | Valve-choke | 1 | 68770 | Grip | 1 |
| 28008 | Lock-bkr. arm | 1 | 65113 | Shield-inner | 1 | 67366 | Stop-throttle | 1 | 68773 | Seal-felt | 1 |
| 28028 | Washer-thrust as req'd | 1 | 65114 | Shield-outer | 1 | 67367 | Gasket-circuit | 1 | 68774 | Gasket | 1 |
| A-33055 | Terminal-spark plug | 1 | 65115-2 | Cover | 1 | 67368 | Gasket-fuel pump | 1 | 68837 | Insert | 1 |
| 55871 | Stud | 4 | 65116 | Bushing | 1 | 67369 | Gasket Set | 1 | 68848 | Reel-250' | 1 |
| 58319-A | Ring-retaining | 1 | 65118 | Rope-starter | 1 | 67370 | Diaphragm | 1 | 68852-2 | Cover | 1 |
| 58340-B | Line-oil pickup | 1 | 65120 | Spring-pawl | 2 | 67371 | Diaphragm | 1 | *68906 | Decal | 1 |
| 58406 | "O" Ring | 1 | 65121 | Screw-shoulder | 2 | 67372 | Screw-valve | 3 | *68907 | Decal | 1 |
| 58833-1 | Washer-outer | 1 | 65122 | Grommet | 2 | 67373 | Screw-idle adj. | 1 | *68920 | Decal | 1 |
| 59074 | "O" Ring | 4 | A-65123 | Bracket | 1 | 67374 | Screw | 1 | *68921 | Decal | 1 |
| 59704 | Screw-retaining | 2 | 65124 | Pad-rubber | 2 | 67375 | Screw | 2 | A-68936 | Carrying Case | 1 |
| 60051 | Ball-choke friction | 1 | 65125 | Ring-retaining | 1 | 67376 | Spring-carb. | 1 | *A-68950-1 | Cap-muffler | 1 |
| 63290 | Washer-felt | 1 | 65126 | Key-woodruff | 1 | 67377 | Spring-carb. | 2 | *A-68955 | Kit | 1 |
| 63638-B | Plate-inner | 1 | 65127 | "O" Ring | 1 | 67378 | Spring-carb. | 1 | *68961 | Gasket | 1 |
| 63639-A | Plate-outer | 1 | 65130-S | Spark Plug | 1 | 67379 | Needle-carb. | 2 | *A-69024-1 | Handle Bar | 1 |
| 63718 | Valve-check | 2 | 65131-1 | Cover-drivecase | 1 | 67381 | Screen-carb. | 2 | 72084-A1 | Nut-hex | 1 |
| 63905 | Washer-lock | 2 | 65133 | "O" Ring | 1 | 67382 | Plate-carb. | 1 | FASTENING PARTS | | |
| 63910 | Plate-"on-off" | 1 | 65135 | Grommet | 1 | 67383 | Lever-metering | 1 | 80035 | 10-32 x 5/8 | 2 |
| A-63920 | Filter-fuel | 1 | 65136 | Screw-cam | 1 | 67384 | Kit-repair | 1 | 80461-1 | 6-32 x 5/8 | 4 |
| A-63938 | Switch | 1 | 65137 | Line-oil | 2 | 67628 | Screw | 1 | 80560 | 8-32 x 1/2 | 4 |
| A-63939 | Lead-ground | 1 | 65138 | Fitting-oil line | 1 | 67634 | Boot-throttle rod | 1 | 80567 | 8-32 x 3/4 | 3 |
| 64021 | Screw-coil & core | 2 | 65142 | Seal-oil pump | 1 | 67752 | Bushing | 1 | 80571 | 6-32 x 3/8 | 4 |
| 64083-1 | Filter-fuel | 1 | 65144 | Gasket | 1 | 67774-2 | Base | 1 | 80577 | 8-32 x 3/8 | 4 |
| 64124 | Bearing-needle | 1 | 65145 | Gasket-screw | 1 | 67775-2 | Handle | 1 | 80583 | 10-32 x 3/4 | 2 |
| 64133-A | Screw-shoulder | 2 | 65146-1 | Plate-clutch | 1 | 67776-2 | Bracket-handle bar | 1 | 80630 | 6-32 x 1/2 | 1 |
| 64182 | Washer | 1 | 65147-A | Stop-throttle adj. | 1 | 67780-2 | Bracket | 1 | 80676 | 12-24 x 5/8 | 9 |
| 64224 | Cover-diaphragm | 1 | A-65152-2 | Body-muffler | 1 | 67782 | Pin-retaining | 1 | 80704 | 10-32 x 5/8 | 6 |
| 64229 | Valve-inlet needle | 1 | 65153 | Pin-dowel | 1 | 67783 | Pin-retaining | 1 | 80805 | 8-32 x 9/16 | 2 |
| 64231 | Gasket | 1 | A-65154-1A | Manifold-intake | 1 | 67784 | Pin-retaining | 1 | 80870 | 10-32 x 3/8 | 3 |
| 64238 | Spring-choke friction | 1 | 65157 | Screw-retainer | 1 | 67785 | Pin-retaining | 1 | 80919 | 4-40 x 1/4 | 2 |
| 64243 | Screen-fuel inlet | 1 | A-65170 | Pulley & Cup | 1 | 67786-1 | Cover | 1 | 80954 | 1/4-20 x 1-1/8 | 1 |
| 64309 | Pin-dowel | 3 | 65171-A | Pin-throttle | 1 | A-67802 | Kit-throttle adj. stop | 1 | 81010-1 | Nut-10-32 | 2 |
| 64349-A | Screw-shoulder | 3 | A-65172 | Filter-oil | 1 | A-67817 | Switch-toggle | 1 | 81065-2 | Nut-1/4-28 | 4 |
| 64473 | Grommet | 2 | 65173 | Lever-release | 1 | 67855-1 | Plate-clutch (steel) | 1 | 81109-2 | Nut-10-32 | 2 |
| 64613-A | Screw-shoulder | 2 | 65174 | Spring | 1 | 67857 | "E" Ring | 4 | 81112 | Nut-5/16-24 | 1 |
| 64677 | Spring-throttle lock | 1 | 65175-A | Screw-guide bar | 1 | 67868 | Mount-vibration | 2 | 81126 | Nut-#6-32 | 1 |
| 64689 | Screw Assembly | 4 | A-65178 | Filter Element | 1 | A-67874-3 | Cylinder-1-9/16 | 1 | 81196 | Nut-5/16- | 2 |
| 64813 | Ring-retaining | 2 | 65179 | Bearing-roller | 1 | A-67889-1 | Handle Bar | 1 | 82146 | 8-32 x 5/8 | 9 |
| 64862 | Grommet-choke | 1 | A-65181 | Kit-bumper | 1 | 67893 | Shield-pulley | 1 | 82165 | 10-32 x 1-5/8 | 2 |
| 65006-2 | Crankshaft | 1 | 65183 | Grip-rope | 1 | 67912 | Ring-retaining | 4 | 82169 | 10-32 x 7/8 | 1 |
| 65010 | Seat-reed valve | 1 | A-65184 | Valve-release | 1 | 67924 | Pin | 1 | 82187 | 8-32 x 1-7/16 | 1 |
| 65011-A | Retainer-reed valve | 1 | 65185 | Bushing | 1 | A-67947 | Kit-heat exchanger | 1 | 82190 | 6-32 x 1-1/4 | 1 |
| 65012-A | Reed-valve | 4 | 65188 | Spring | 1 | A-67971 | Bearing-needle | 1 | 82198 | 6-40 x 1 | 1 |
| 65014 | Gasket-valve seat | 1 | 65189 | Screen-air | 1 | 67974 | Mount-vibration | 2 | 83004-1 | Washer-#6 | 1 |
| 65016 | Gasket-carb. | 1 | A-65200-A | Drivecase | 1 | A-68028 | Retainer | 1 | 83006-1 | Washer-#10 | 2 |
| 65017 | Spring-check valve | 1 | A-65202-A | Crankcase | 1 | 68046 | Grommet | 1 | 83046 | Washer-#10 | 2 |
| 65018 | Gasket-cylinder | 1 | A-65203-A | Points-breaker | 1 | A-68051 | Rod-connecting | 1 | 84035-1 | Washer | 1 |
| 65019 | Seal | 2 | 65205 | Lead-hi-tension | 1 | A-68053 | Line-fuel | 1 | 84065-1 | Washer-5/16 | 1 |
| 65023 | Post-spring | 1 | 65206-A | Box-breaker | 1 | A-68061-A | Plunger-oil pump | 1 | 86301 | Pin-cotter | 1 |
| 65024-1 | Washer-inner | 1 | 65207 | Nut-hex | 1 | 68196 | Grommet-hi-lo | 1 | 86317 | Pin-cotter | 1 |
| 65025 | Bolt-guide bar | 2 | 65209 | Seal-felt | 1 | 68197 | Grommet | 1 | 86324 | Pin-cotter | 1 |

* Denotes new parts

ALWAYS FURNISH MODEL AND SERIAL NUMBER WHEN ORDERING PARTS.

Leon's Chainsaw Parts & Repair
Do Not Sell or Reproduce



• textron
DIVISION

PORT CHESTER, NEW YORK, U.S.A. 10573