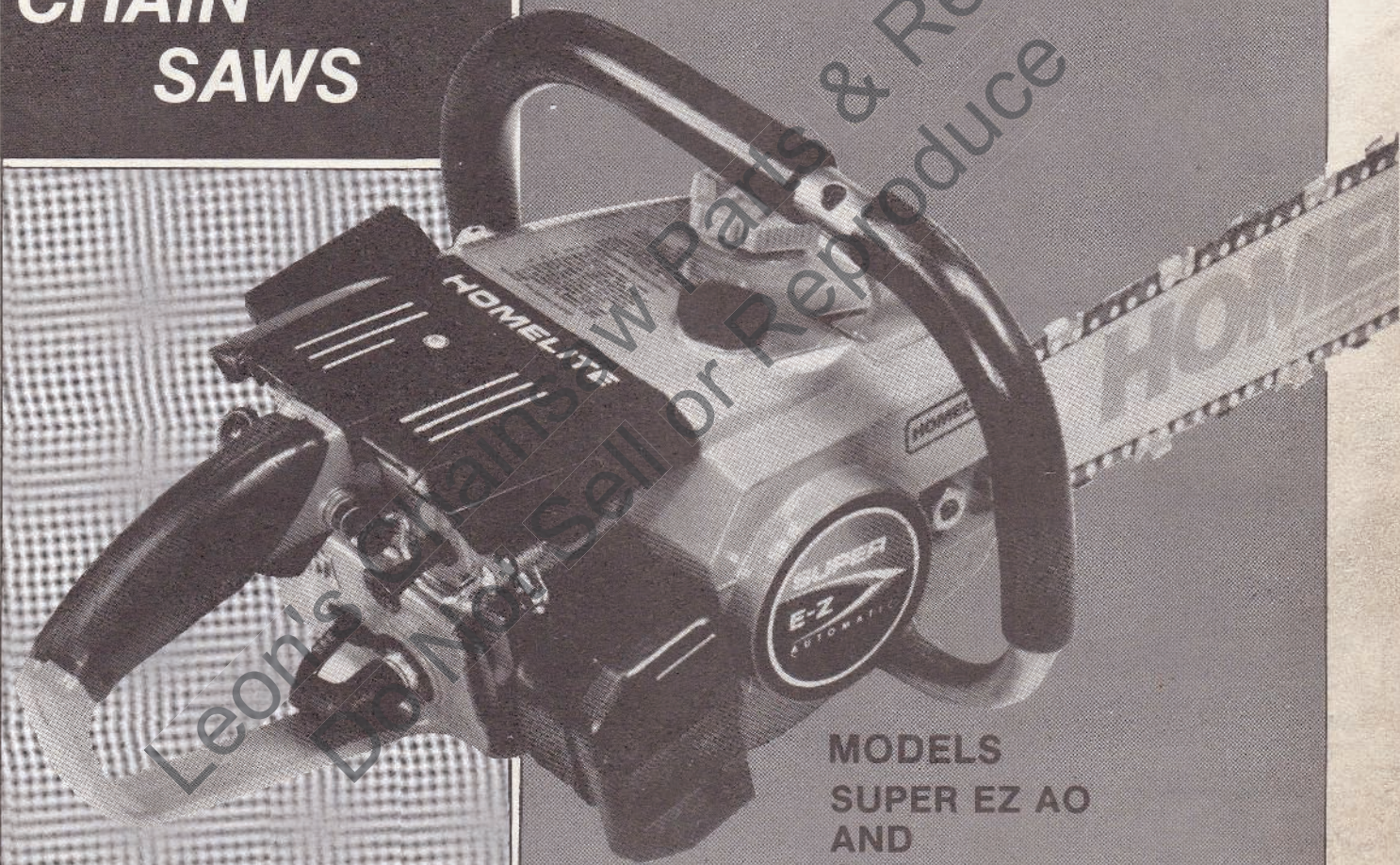


PART NO. 24522-A REV. 2

PARTS LIST

Printed in U.S.A.
Price .35

HOMELITE®
SUPER EZ
CHAIN
SAWS

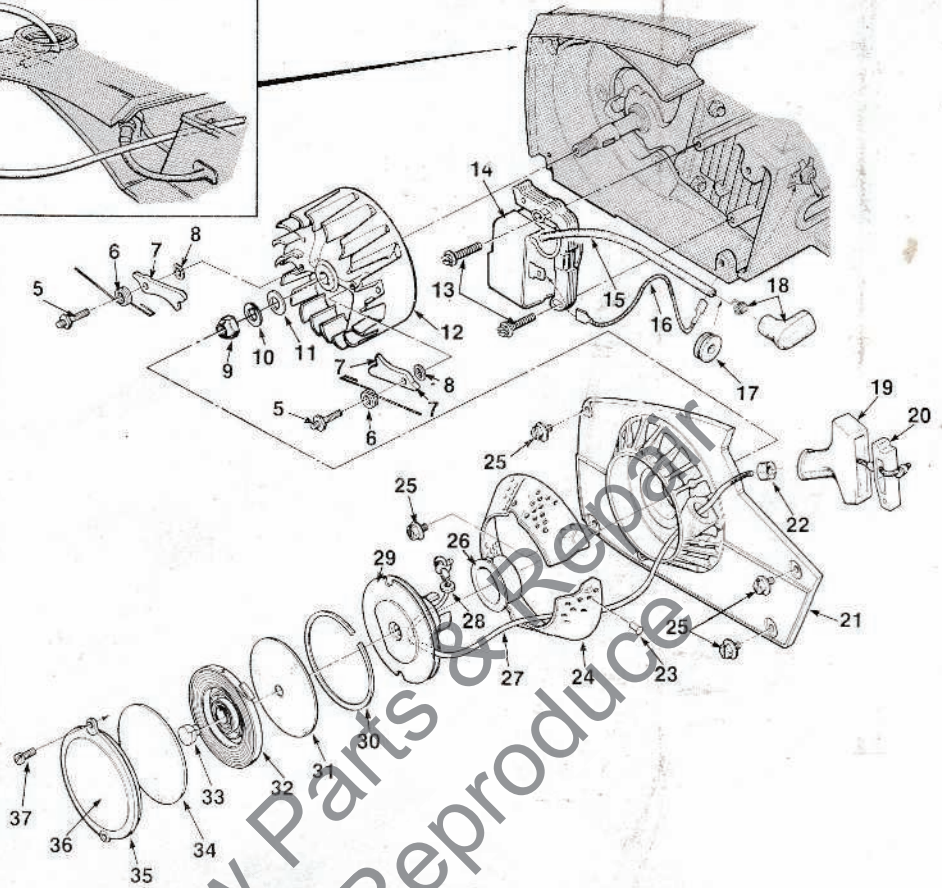
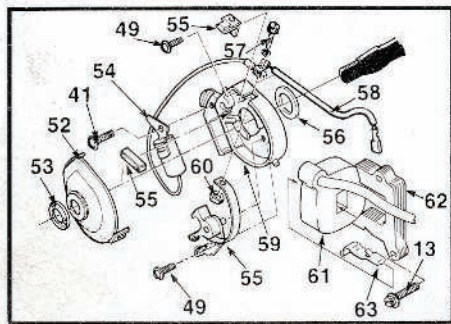
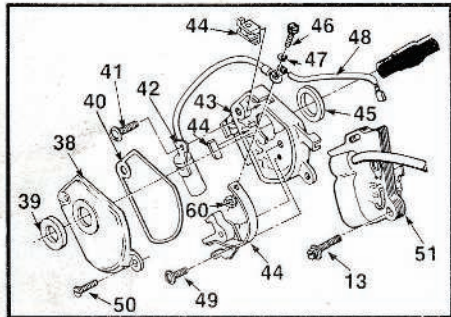
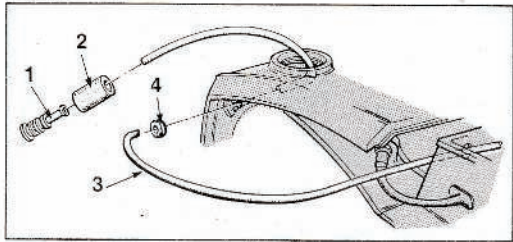


MODELS
SUPER EZ AO
AND
SUPER EZ AOW

HOMELITE **TEXTRON**

Homelite Division of Textron Inc.

FIGURE 1

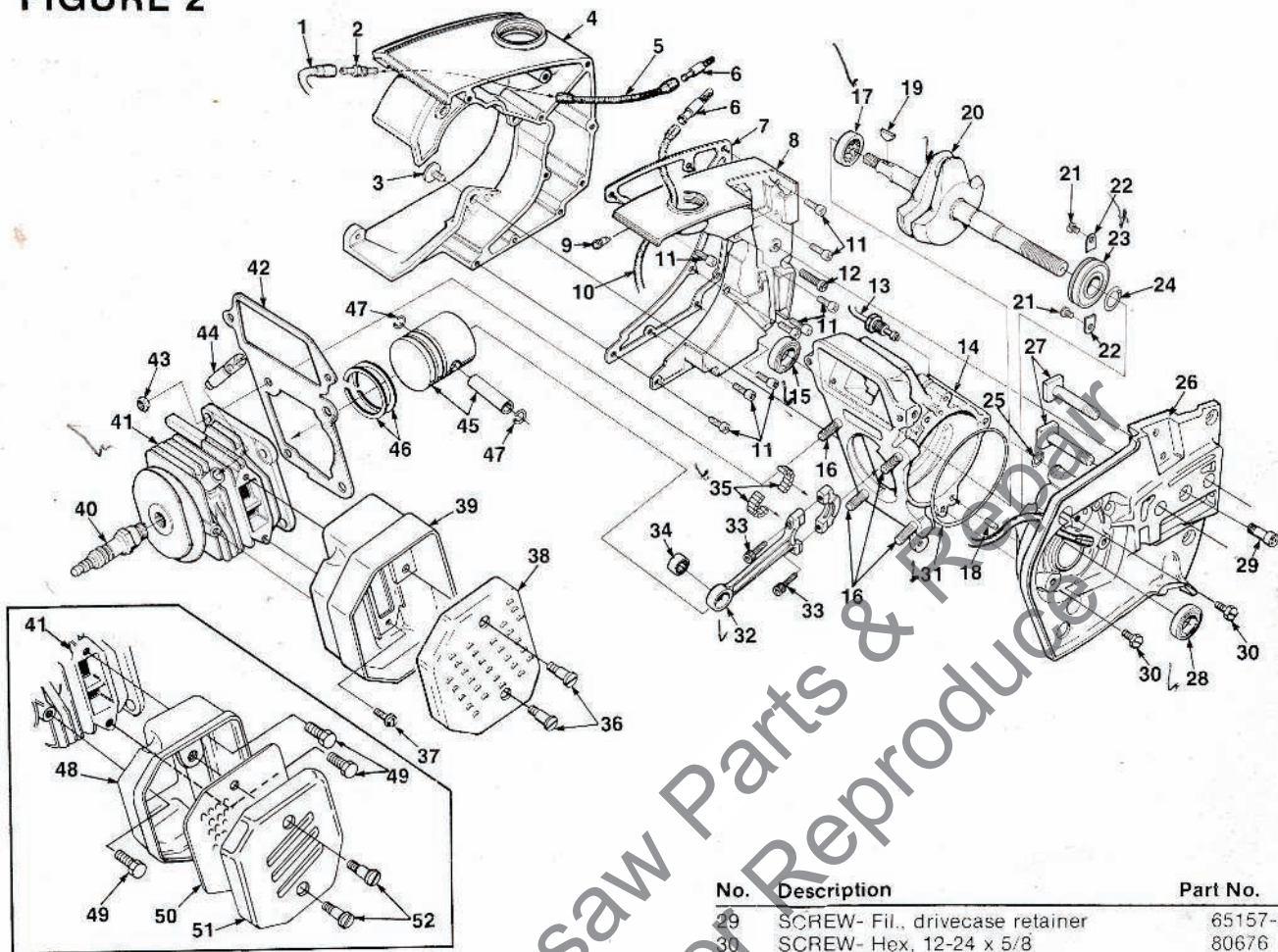


No.	Description	Part No.	Qty.	No.	Description	Part No.	Qty.
1	FILTER- Fuel (Note 1) Includes: 2 FILTER- Felt	A-69923	1	36	DECAL- Starter cover	68920	1
2	FILTER- Felt	64083	1	37	SCREW- Pan, 8-32 x 3/8	80577	2
3	LINE- Fuel Includes: 4 GROMMET	A-68053-A	1	38	COVER- Breaker box (Point Ignition)	(W) A-69507	1
4	GROMMET	68046	1	39	SEAL- Breaker box cover	(W) 68773-1	1
5	STUD- Starter pawl	65109	2	40	GASKET- Breaker box cover	(W) 69512	1
6	SPRING- Starter pawl	65120	2	41	SCREW- Pan 6-32 x 1/2	80630	1
7	PAWL- Starter	65108	2	42	CONDENSER- (Point Ignition)	(W) 68711	1
8	WASHER- Lock #10	83046	2	43	BOX- Breaker (Point Ignition)	(W) 69508	1
9	NUT- Hex (5/16 - 24)	81117	1	44	POINTS- Breaker (Point Ignition)	(W) A-68710	1
10	WASHER- Lock	83002	1	45	SEAL- Felt	(W) 68705	1
11	WASHER- Flat, 5/16	82065-1	1	46	WASHER- Thrust (Not shown)	(W) 28028	A/R
12	ROTOR- Magneto	(P) 65288-A	1	47	LOCK- Breaker arm (Not shown)	(W) 28008	1
13	ROTOR- Magneto	(W) 68701	1	48	SCREW- Hex, 6-32 x 1/2	(W) 68700	1
14	SCREW- Hex washer hd., 8-32 x 3/4	82248	2	49	(Point Ignition)		
15	MODULE & CORE- (Solid State)	A-94111	1	50	WASHER- Lock #6	83004-1	1
16	Includes: LEAD- High tension	65205	1	51	LEAD GROUP- Primary	(W) 68712	1
17	LEAD- Ground (Point Ignition)	A-63939	1	52	(Point Ignition)		
18	LEAD- Ground (Solid State)	A-94625	1	53	SCREW- Pan, 6-32 x 3/8	80571	2
19	GROMMET- Hi tension lead	75036	1	54	SCREW- Cover mounting	(W) 68715	2
20	TERMINAL- Spark plug	A-33055	1	55	(Point Ignition)		
21	GRIP- Starter rope	A-69962-B	1	56	COIL & CORE- (Point Ignition)	(W) 68716	1
22	Includes: INSERT- Rope retaining	70018-A	1	57	COVER- Breaker box (Point Ignition)	(P) A-65210-A	1
23	HOUSING- Rewind starter	A-65222-1	1	58	Includes: SEAL- Breaker box cover	(P) 65211	1
24	BUSHING- Starter rope	65185	1	59	CONDENSER- (Point Ignition)	(P) 65286	1
25	STUD- Drive #2	67191	3	60	POINTS- Breaker (Point Ignition)	(P) A-65203-A	1
26	SCREEN- Air inlet	65189	1	61	Includes: SEAL- Breaker box	(P) 65209	1
27	SCREW- Hex, 10-32 x 5/8	80704	4	62	SCREW- Hex, 6-32 x 7/16	(P) 67628	1
28	BUSHING- Starter cup	68244	1	63	LEAD GROUP- Primary (Point Ignition)	(P) 65291	1
29	ROPE- Starter, 42" (#4)	A-93876	1	64	BOX- Breaker (Point Ignition)	(P) 65206-A	1
30	Includes: WASHER- Flat	93862	1	65	NUT- (Point Ignition)	65207	1
31	PULLEY & CUP- Starter	A-65170	1	66	COIL- Ignition (Point Ignition)	(P) 68256	1
32	RING- Shield retaining	65125	1	67	CORE- Coil (Point Ignition)	(P) 68255	1
33	SHIELD- Spring (outer)	65114	1	68	RETAINER- Coil	(P) 68257	1
34	SPRING- Rewind	65107	1				
35	LOCK- Spring	65102	1				
	SHIELD- Spring (inner)	65113	1				
	COVER- Rewind starter	65095-2	1				

NOTE 1: Units prior to S/N 43370105 with A-63920 Filter must use 64182 washer.

Complete Magneto must be either (W) Wico or (P) Phelon. Phelon and Wico parts are not individually interchangeable.

FIGURE 2



No.	Description	Part No.	Qty.
1	LINE- Oil	65137	1
2	FITTING- Oil line	65138-A	1
3	SCREW- Retaining	65321-A	3
4	TANK- Fuel & Oil	65037-7	1
5	LINE- Oil (pick-up)	93112-14	1
6	FILTER- Oil	A-64293	2
7	GASKET- Fuel & oil tank	65046	1
8	COVER- Fuel & oil tank	A-69832-A	1
9	Includes: VALVE- Check (Note 1)	69451	1
10	LINE- Oil (Note 1)	93112-22	1
11	SCREW- Fil., 8-32 x 5/8	82146	9
12	SCREW- Fil., 7-32 x 1 7/16	82187	1
13	LINE- Oil	A-94354	1
14	CRANKCASE	A-65202-A	1
15	Includes: SEAL	65019	1
16	STUD- Cylinder	55871	4
17	BEARING- Roller	65179	1
18	PIN- Dowel	65153	1
19	KEY- Woodruff	65126	1
20	CRANKSHAFT	65006-2	1
21	SCREW- Bearing retaining	70306	2
22	WASHER- Lock	63905	2
23	BEARING- Ball	65044-S	1
24	RING- Retaining	65045	1
25	"O" RING	59074	1
26	DRIVECASE (See Note 2)	A-69807-A	1
27	Includes: BOLT- Guide bar	65025	2
28	SEAL	65019	1

No.	Description	Part No.	Qty.
29	SCREW- Fil., drivecase retainer	65157-A	1
30	SCREW- Hex, 12-24 x 5/8	80676	3
31	"O" RING	65127	1
32	ROD- Connecting	A-68051	1
33	Includes: SCREW- Cap. hex soc., hd.	69919	2
34	BEARING- Needle	68512	1
35	BEARING- Needle (set of 28)	A-65009	1
36	MUFFLER- Complete (Standard)	A-68254	1
37	Includes: SCREW- Shoulder	64133-A	2
38	SCREW- Hex, 10-32 x 3/8	80870	3
39	CAP- Muffler	68253-1	1
40	BODY- Muffler	A-65152-2	1
41	SPARK PLUG	65130-S	1
42	CYLINDER- 1-9/16 dia.	A-69737	1
43	Includes: GASKET- Cylinder	65018	1
44	NUT- Hex, 1/4-28	81065-2	4
45	VALVE- Compression release	A-65184	1
46	PISTON & PIN	A-68487	1
47	Includes: PISTON RING	68508	2
48	RING- Piston pin retaining	64813	2
49	MUFFLER- Louver (Optional)	A-65275	1
50	Includes: BODY- Muffler	A-65152-2	1
51	SCREW- Hex, 10-32 x 3/8	80870	3
52	BAFFLE- Muffler	65067	1
	CAP- Muffler	65066-2	1
	SCREW- Shoulder	64133-A	2

OPTIONAL

NOTE 1- Oil line 93112-22 not used in units built prior to s/n 42042785 with single oil line system. Install 69451 check valve in oil line hole.

NOTE 2 - Use A-65200-1A drivecase for units prior to s/n 42042785 with single oil line system.

FIGURE 3

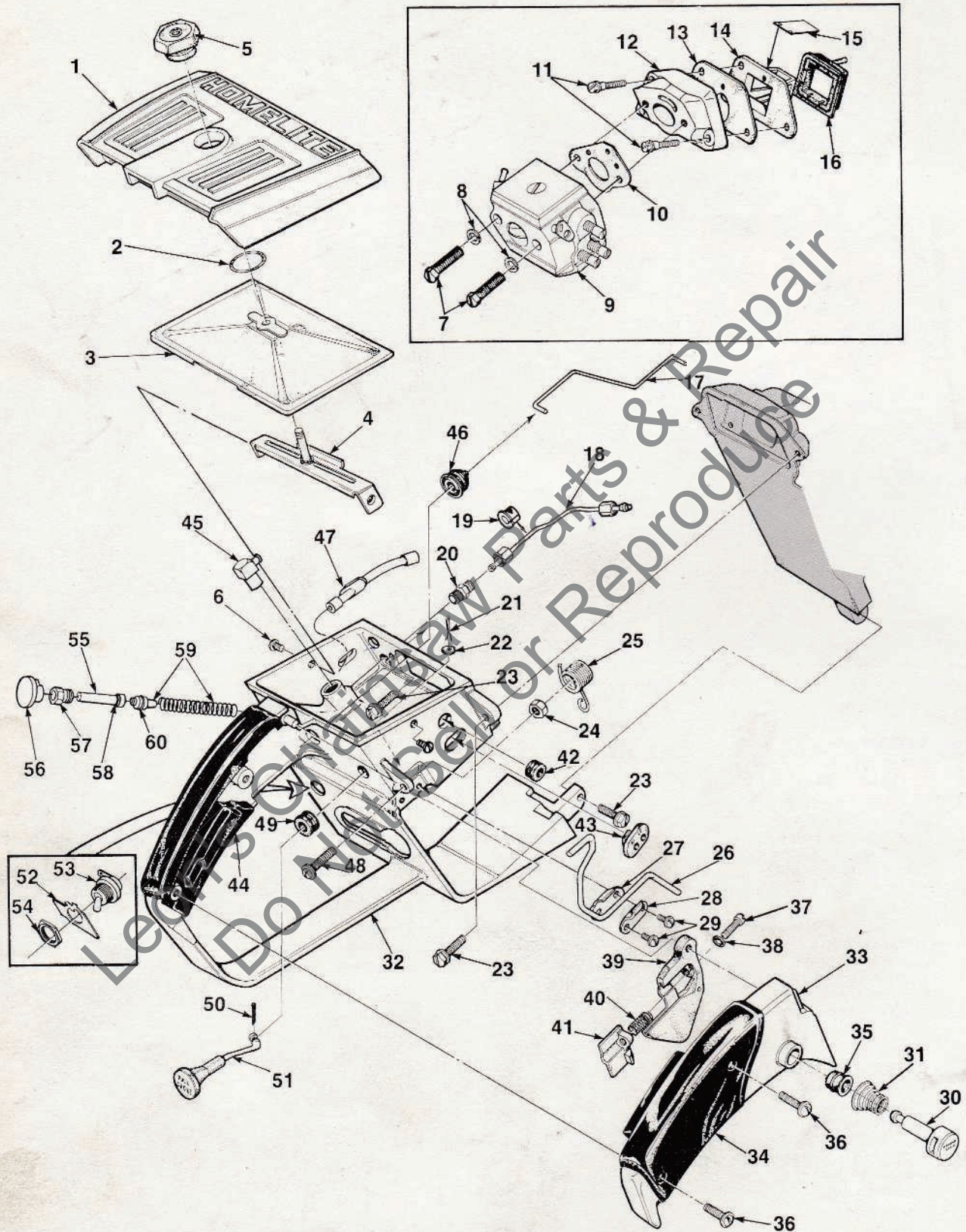
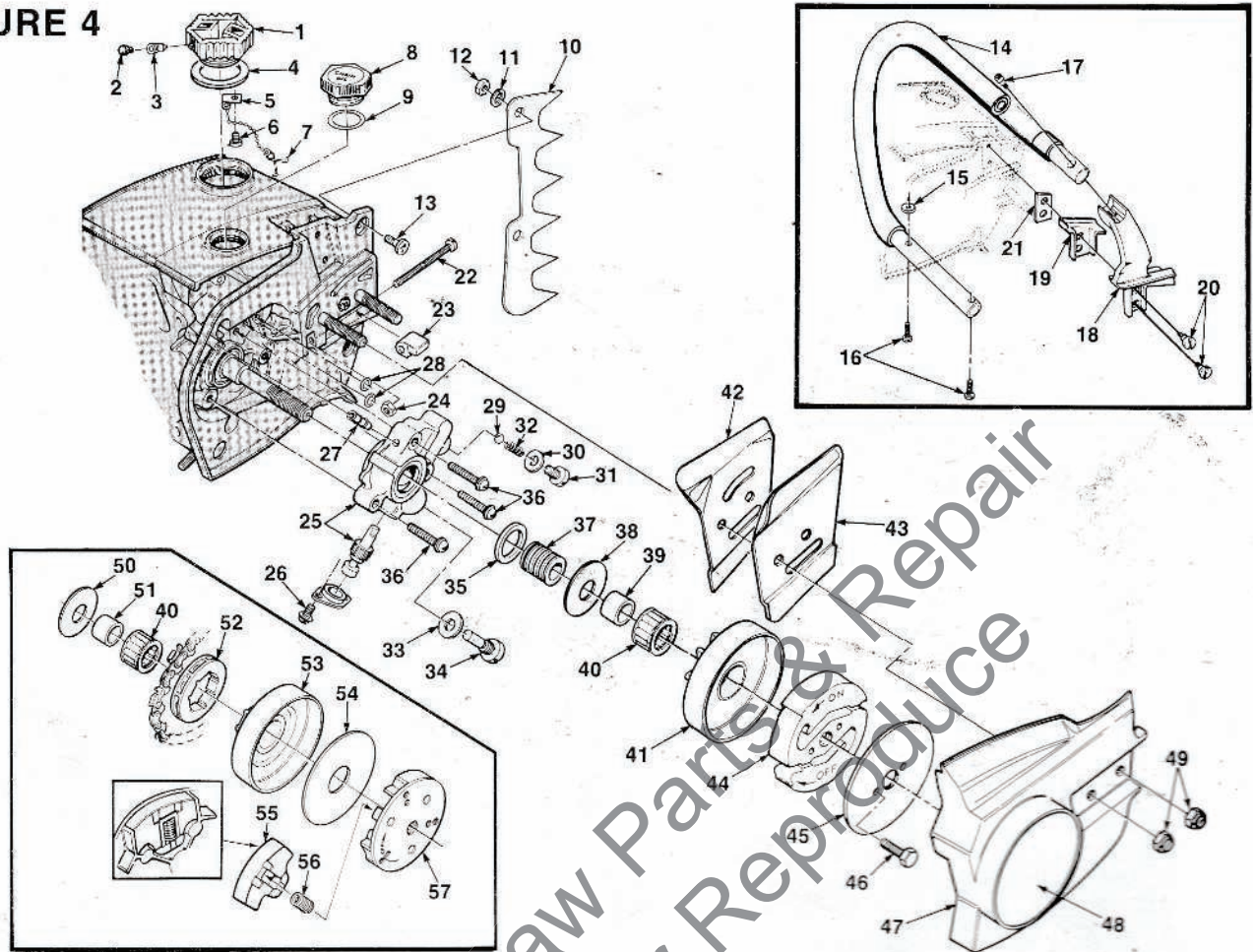


FIGURE 3

No.	Description	Part No.	Qty.	No.	Description	Part No.	Qty.
1	COVER- Air filter	65096-6	1	34	GRIP- Throttle handle cover	68759	1
2	RING- Retaining	58319-A	1	35	BUSHING	67752	1
3	FILTER ELEMENT- Air	A-65178	1	36	SCREW- Pan, 8-32 x 1/2	80560	1
4	BRACKET- Air filter cover	A-93138-A	1	37	SCREW- Pan, 6-40 x 1/2	82198	1
	Includes:			38	"O" RING	65260	1
5	NUT- Covermounting (1/4-20) (Note 1)	A-65272-2	1	39	TRIGGER- Throttle	65031-A	1
6	SCREW- Pan, 8-32 x 3/8	82327	2	40	SPRING- Throttle stop	65188	1
7	SCREW- Hex, 10-32 x 1 5/8	82165	2	41	STOP- Throttle adjustment	65147-A	1
8	WASHER- Lock, #10	83046	2	42	GROMMET- Idle adjusting	68197	1
9	CARBURETOR- (HDC-44)	A-68415-A	1	43	GROMMET- "Hi-Lo"	68196	1
10	GASKET- Carburetor	65016	1		LINE- Fuel (Shown on Fig. 1)	A-68053-A	1
11	SCREW- Shoulder	64349-A	3		Includes:		
12	MANIFOLD- Intake	A-65154-1A	1		GROMMET (Fig. 1)	68046	1
13	GASKET- Reed valve seat	65014-A	1	44	GRIP- Throttle handle	68770	1
14	SEAT- Reed valve	65010	1	45	VALVE- Check (inlet) 90°	A-65076	1
15	REED- Valve	65012-A	4	46	BOOT- Throttle rod	67634	1
16	RETAINER- Reed valve	65011-A	1	47	LINE- Oil	65137	1
17	ROD- Throttle	65056	1	48	SCREW- Round hd., 10-32 x 7/8	80040	1
18	LINE- Oil	A-94354	1	49	GROMMET- Choke	64862	1
	Includes:			50	PIN- Cotter, 1/32 x 1/2	86324	1
	NUT- Compression	25002	1	51	ROD- Choke	65072-1	1
19	GROMMET- Oil line	65085	1	52	PLATE- "On-Off"	70834	1
20	VALVE- Check (outlet)	A-65077	1	53	SWITCH- Grounding	A-63938	1
21	PIN- Cotter, 1/16 x 1/2	86301	1		Includes:		
22	WASHER- Felt	63290	1	54	NUT- Lock	72084-A1	1
23	SCREW- Hex, 12-24 x 5/8	80676	3	55	PLUNGER- Oil pump	A-68061-A	1
24	NUT- Hex, 10-32	81010	1		Includes:		
25	SPRING- Release valve	65174	1	56	BUTTON- oil pump	65084	1
26	LEVER- Release	65173	1	57	NUT- Plunger	65082	1
27	PLATE- Lever	65092	1	58	"O" RING	59074	1
28	CLAMP- Lever	65093	1	59	PLUNGER- Pump	A-67235-A	1
29	SCREW- Pan, 6-32 x 3/8	80571	2		Includes:		
30	PIN- Trigger latch	65171-A	1	60	"O" RING	58406	1
31	SPRING- Throttle latch	64677	1				
32	HANDLE- Throttle	A-68267-B	1				
	Includes:						
33	COVER- Throttle handle	68852-2	1				

NOTE 1: Units prior to Lot #9002 - use A-65272 Nut with 1/4 - 28 thread.

FIGURE 4



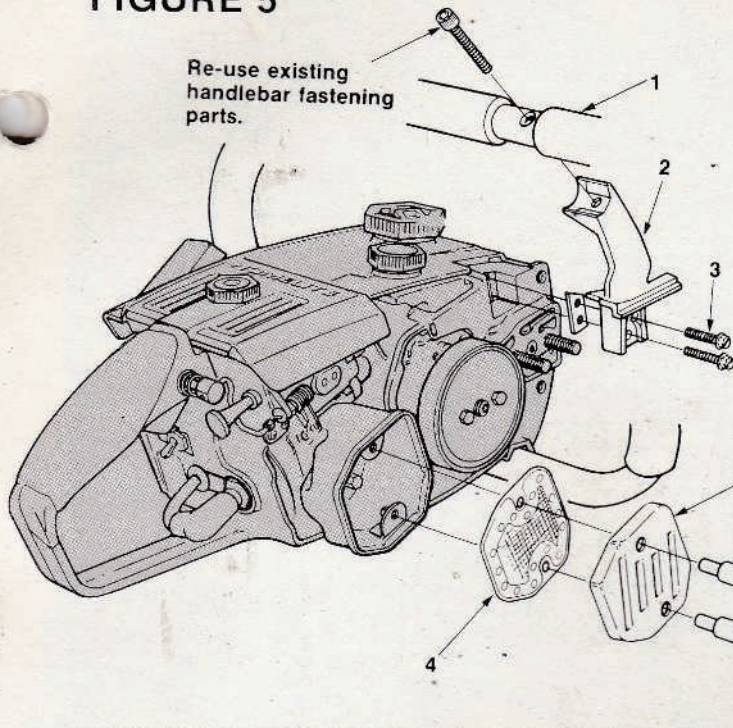
No.	Description	Part No.	Qty.	No.	Description	Part No.	Qty.								
1	CAP- Fuel filler Includes: 2 FILTER- Filler cap 3 VALVE- Check 4 GASKET- Fuel filler cap 5 CHAIN- Bead 6 SCREW- Pan hd., plastic, 6 x 1/4 7 RETAINER- Filler cap	A-69500-A 69454 69451 69501 69502 82256 69503	1 1 1 1 1 1 1	8	CAP- Oil filler (Vented) Includes: 9 VALVE- Check (not shown) 10 GASKET- Oil cap	A-65284-B 69451 69834	1 1 1	11	WASHER- Lock, #10	*83006-1	2	34	SCREW- Cam	65136	1
12	NUT- Hex, 10-32	*81010-1	2	13	SCREW- Flat, 10-32 x 5/8	*80035	2	15	WASHER	69890	1	35	SEAL- Oil pump	65142	1
14	HANDLE BAR- Flush cut (Note 1) Includes: 15 WASHER 16 SCREW- 10-32 x 7/8	A-69675	1	17	SCREW- Soc., 10-32 x 7/8	82169	1	18	KIT- Handle bar bracket (flush cut) Includes: 19 MOUNT- Shock 20 SCREW- Shoulder	A-70307-A 65111 64613-A	1 1 2	36	SCREW- Pan, 8-32 x 3/4	80567	3
21	PLATE- Handle bar bracket	65032	1	22	SCREW- Guide bar adjusting	65175-A	1	23	PIN- Bar adjusting	65112-1	1	37	GEAR- Worm	65047-A	1
24	NUT- Lock, 10-32	81206	1	24	NUT- Lock, 10-32	81206	1	25	PUMP- Automatic oil Includes: 26 SCREW- Pan, 4-40 x 1/4 27 FITTING- Tube 28 "O" RING 29 BALL- Check (rubber) 30 GASKET- Check valve 31 CAP- Check valve 32 SPRING- Check valve 33 GASKET- Cam screw	A-65212-B 80919 94619 59074 65225 65144 65143 65017 65145	1 2 1 2 1 1 1 1 1	38	WASHER- Thrust (outer)	65064	1
34	SCREW- Cam	65136	1	34	SCREW- Cam	65136	1	35	SEAL- Oil pump	65142	1	39	RACE- Inner	65746-B	1
35	SEAL- Oil pump	65142	1	35	SEAL- Oil pump	65142	1	40	BEARING- Needle	64124	1	40	BEARING- Needle	64124	1
36	SCREW- Pan, 8-32 x 3/4	80567	3	36	SCREW- Pan, 8-32 x 3/4	80567	3	41	SPROCKET & DRUM (std.)	A-12294	1	41	SPROCKET & DRUM (std.)	A-12294	1
37	GEAR- Worm	65047-A	1	37	GEAR- Worm	65047-A	1	42	PLATE- Guide bar (inner)	67300-B	1	42	PLATE- Guide bar (inner)	67300-B	1
38	WASHER- Thrust (outer)	65064	1	38	WASHER- Thrust (outer)	65064	1	43	PLATE- Guide bar (outer)	67299-B	1	43	PLATE- Guide bar (outer)	67299-B	1
39	RACE- Inner	65746-B	1	39	RACE- Inner	65746-B	1	44	CLUTCH & PLATE Includes: 45 CLUTCH 46 PLATE- Clutch	A-69953 68362-1A 69915	1 1 1	44	CLUTCH & PLATE Includes: 45 CLUTCH 46 PLATE- Clutch	A-69953 68362-1A 69915	1 1 1
40	BEARING- Needle	64124	1	40	BEARING- Needle	64124	1	47	COVER- Drivecase	65131-15	1	45	CLUTCH	68362-1A	1
41	SPROCKET & DRUM (std.)	A-12294	1	41	SPROCKET & DRUM (std.)	A-12294	1	48	DECAL- Drivecase cover	68921	1	46	SCREW- Hex hd. (10-32 x 1/2)	80361-2	2
42	PLATE- Guide bar (inner)	67300-B	1	42	PLATE- Guide bar (inner)	67300-B	1	49	NUT- Hex, 5/16-18	81196	2	47	COVER- Drivecase	65131-15	1
43	PLATE- Guide bar (outer)	67299-B	1	43	PLATE- Guide bar (outer)	67299-B	1	50	WASHER- Thrust (outer) for rimmed sprocket (Note 2)	*65027	1	48	DECAL- Drivecase cover	68921	1
44	CLUTCH & PLATE Includes: 45 CLUTCH 46 PLATE- Clutch	A-69953 68362-1A 69915	1 1 1	44	CLUTCH & PLATE Includes: 45 CLUTCH 46 PLATE- Clutch	A-69953 68362-1A 69915	1 1 1	51	RACE- Inner (Note 2)	*65985-B	1	49	NUT- Hex, 5/16-18	81196	2
45	CLUTCH	68362-1A	1	45	CLUTCH	68362-1A	1	52	SPROCKET- Rim type, 3/8, 7 tooth (Note 2)	*63284	1	50	WASHER- Thrust (outer) for rimmed sprocket (Note 2)	*65027	1
46	SCREW- Hex hd. (10-32 x 1/2)	80361-2	2	46	SCREW- Hex hd. (10-32 x 1/2)	80361-2	2	53	HUB & DRUM (Note 2) (Opt.)	*A-65987-A	1	51	RACE- Inner (Note 2)	*65985-B	1
47	COVER- Drivecase	65131-15	1	47	COVER- Drivecase	65131-15	1	54	WASHER- Thrust (inner) (Note 3)	*65024	1	52	SPROCKET- Rim type, 3/8, 7 tooth (Note 2)	*63284	1
48	DECAL- Drivecase cover	68921	1	48	DECAL- Drivecase cover	68921	1	55	WASHER- Thrust (inner) (Note 2)	*58833-1	1	53	HUB & DRUM (Note 2) (Opt.)	*A-65987-A	1
49	NUT- Hex, 5/16-18	81196	2	49	NUT- Hex, 5/16-18	81196	2	56	SHOE- Clutch (Note 3)	*65892	3	54	WASHER- Thrust (inner) (Note 3)	*65024	1
50	WASHER- Thrust (outer) for rimmed sprocket (Note 2)	*65027	1	50	WASHER- Thrust (outer) for rimmed sprocket (Note 2)	*65027	1	57	SPRING- Clutch (Note 3)	*65217	3	55	WASHER- Thrust (inner) (Note 2)	*58833-1	1
51	RACE- Inner (Note 2)	*65985-B	1	51	RACE- Inner (Note 2)	*65985-B	1	56	SHOE- Clutch (Note 3)	*65892	3	56	SHOE- Clutch (Note 3)	*65892	3
52	SPROCKET- Rim type, 3/8, 7 tooth (Note 2)	*63284	1	52	SPROCKET- Rim type, 3/8, 7 tooth (Note 2)	*63284	1	57	SPRING- Clutch (Note 3)	*65217	3	57	SPRING- Clutch (Note 3)	*65217	3
53	HUB & DRUM (Note 2) (Opt.)	*A-65987-A	1	53	HUB & DRUM (Note 2) (Opt.)	*A-65987-A	1	57	PLATE- Clutch (aluminum) (Note 3)	*67855-1	1	57	PLATE- Clutch (aluminum) (Note 3)	*67855-1	1
54	WASHER- Thrust (inner) (Note 3)	*65024	1	54	WASHER- Thrust (inner) (Note 3)	*65024	1								
55	WASHER- Thrust (inner) (Note 2)	*58833-1	1	55	WASHER- Thrust (inner) (Note 2)	*58833-1	1								
56	SHOE- Clutch (Note 3)	*65892	3	56	SHOE- Clutch (Note 3)	*65892	3								
57	SPRING- Clutch (Note 3)	*65217	3	57	SPRING- Clutch (Note 3)	*65217	3								

NOTE 1: A-69675, Handlebar, and 82268, screw, can be used in a combination with rubber pad 65124, grommet 65122, and screw, shoulder 65121, which were built prior to S/N 41411665.

NOTE 2: When using A-65987-A Drum & Hub index numbers 50, 51, 52 and 58833-1 are required.

NOTE 3: Units with 3 piece clutch items 55, 56, and 57 requires 65024 (Inner) Thrust Washer.

FIGURE 5



SUPER EZ AOW

KIT- Muffler temperature		A-94118	1
Includes:			
1	HANDLE BAR	A-68469-3	1
2	BRACKET- Handle Bar	A-70303	1
Includes:			
3	SCREW- (#10-32 x .625)	80704	2
4	ARRESTOR- Spark	A-65256-1A	1
5	CAP- Muffler	94098	1
6	SPACER- Muffler	94100	2
7	SHIELD- Muffler	94092	1
8	SCREW- Hex washer (#10-32 x 1.5)	82353	2

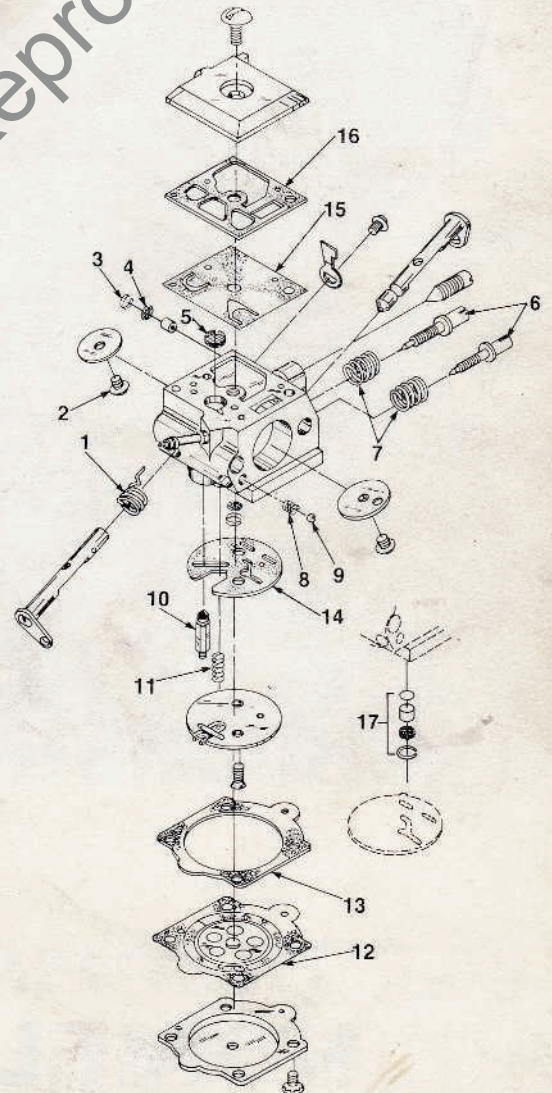
CARBURETOR

HDC-44

A-68415-A

Leona's Chainsaw Parts & Repair
Do Not Sell or Reproduce

Repair Kit	93203-A	(1-16)
Gasket/Diaphragm	70655	(12-16)
Check Valve Repair	65386	(17)



ACCESSORIES

CARRY CASE	94216
COMPOUND- Sealing (Duxseal) (starter rope)	24352
KIT- Heat exchanger	A-67947
Includes:	
SCREW- 10-32 x .375	80870
KIT- Loctite	23488-B
KIT- Repair (Sprocket nose bar)	A-69496
Includes:	
BEARING- Guide bar (28)	70737
RIVET- Guide bar (4)	94853
ROPE- Starter. 250' reel	68848
DEVICE- Anti-kickback	A-70790-A
Includes:	
SCREW- #1/4-20 x 5/8	82335
TUBING- Rubber (fuel line) 10'	70310-99
GREASE- Multi use	17193
SPRAY CAN- Black	22772
SPRAY CAN- Red	23475
KIT- Chain brake	A-70416-B
Includes:	
SPROCKET & DRUM- (7 tooth, 3/8 pitch)	A-12294-2
WRENCH- Sprocket	68651
COVER- Brake lever	70393-A
SCREW- Plastite (3)	82215
SPRING- Torsion	70093-B
SCREW- Shoulder	69551
SUPPORT- Vibration mount	70506-A
SLEEVE- Headed	70313
HAND GUARD & LEVER	A-69600-A1
BAND- Brake	94614
LEVER- Brake band	94615-1
PIN- Roll (3/16 x 1/2)	67911
SCREW- Pan hd.	82258
COVER- Drivecase (W/dowel pin holes)	94616-1
COVER- Drivecase (without dowel pin holes)	94616-6
KIT- Hand guard	A-70910
Includes:	
WASHER (2)	58851-2

WASHER- Belleville #10 (2)	70788
SLEEVE	70911
SCREW- Machine flat hd. 12-24 x 1 1/2	70926
SCREW- Flat hd. 12-24 x 1	80945
NUT- Hex #12-24	81225
SCREW- Flat 12-24 x 1 1/2	82223

TOOLS

ANVIL- Crankshaft installation	24299
BIT- #2 pozidriv	24304
COLLAR- Bearing installation	24295
DRIVER- Check valve (carburetor)	24972
JACKSCREW- Crankshaft installation	A-24309
PLUG- Bearing & Seal installation	24298
PLUG- Bearing installation	23756
PLUG- Wrist pin bearing installation	24294-1
PLUG- Seal & bearing removal	24292
PULLER- Magneto rotor	A-24290
Includes:	
SCREW- Rotor remover (4)	24301
RING- Retaining (4)	67912
SLEEVE- Bearing & shaft installation	23136-1
SLEEVE- Crankshaft bearing installation	24300
SLEEVE- Seal protecting (crankcase)	24297
SLEEVE- Seal protecting (drivecase)	24291
WRENCH- Spanner (3 shoe clutch)	A-24060
Includes:	
PIN- Dowel (3)	64309
BIT- Driver (torx) 1/4" shank	24982-01
BIT- Driver (torx) 5/16" shank	24982-02
WRENCH- Combination	A-24284
WRENCH- Spanner ("S" Clutch)	A-93791
Includes:	
PIN- Clutch spanner (2)	23717-A
REAMER- Compression valve seat cleaning	A-24138
GAUGE- Feeler (.015) point set	22486
GAUGE- Feeler (.0125) rotor-coil air gap	24306

HOMELITE DIVISION OF TEXTRON INC.

P.O. BOX 7047

14401 CAROWINDS BOULEVARD

CHARLOTTE, N.C. 28217

HOMELITE **TEXTRON**

Homelite Division of Textron Inc.