

PARTS LIST

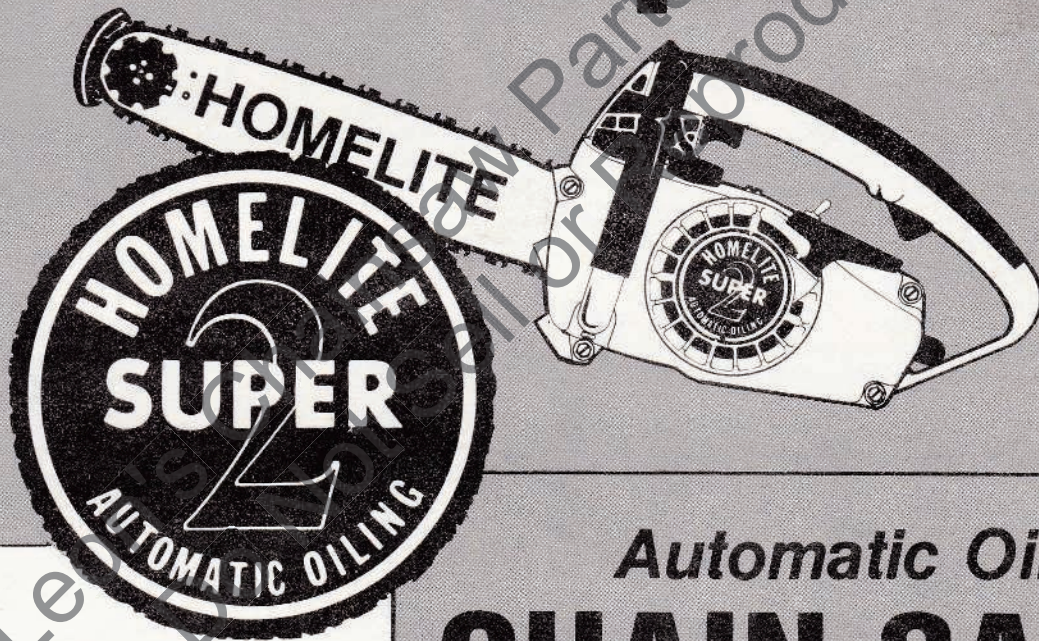
PART NO. 24983 REV. 1

Printed in U.S.A.

Price .35

HOMELITE[®]

Super 2



Automatic Oiling

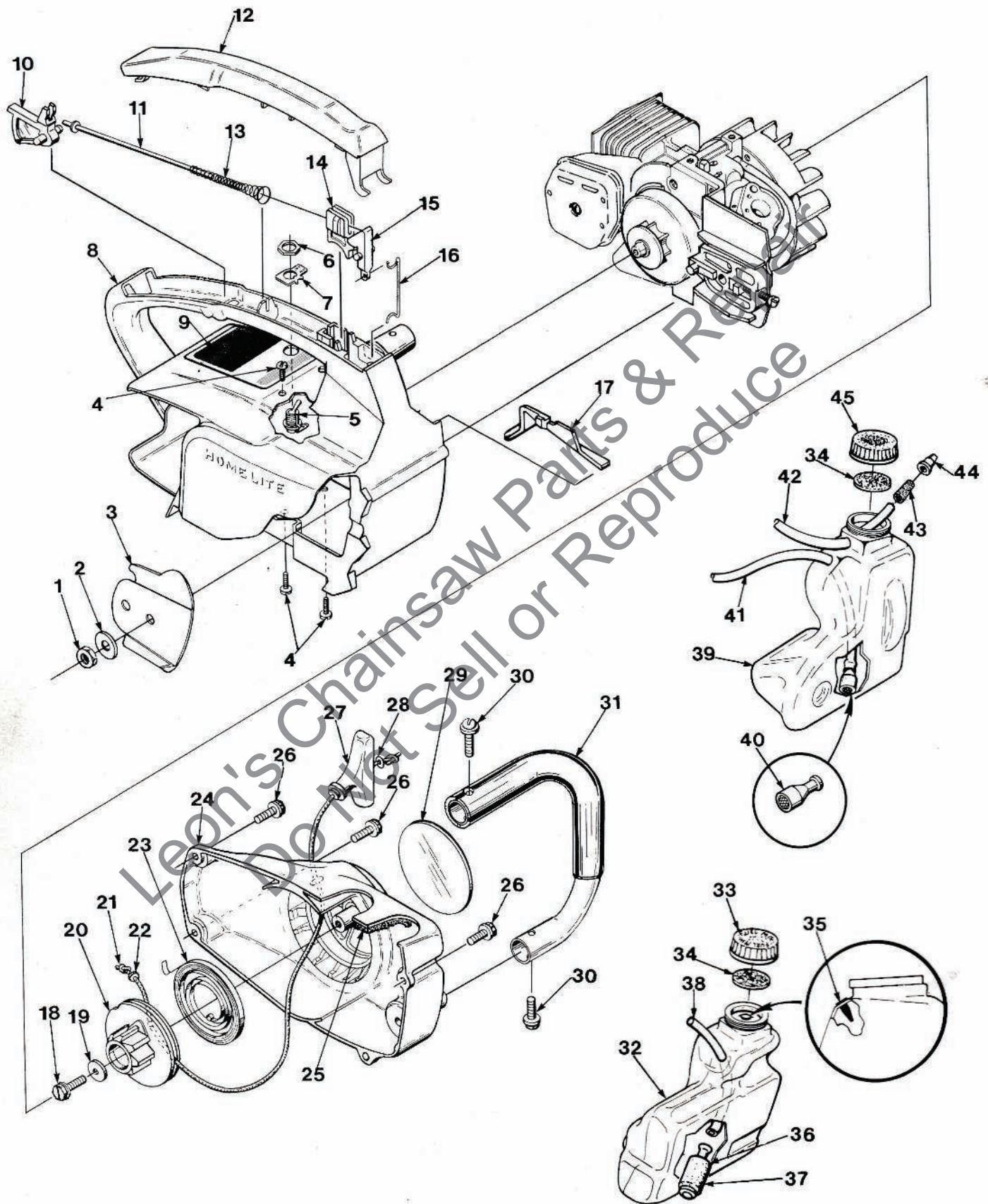
CHAIN SAW

HOMELITE **TEXTRON**

Homelite Division of Textron Inc.

SUPER 2

FIGURE 1

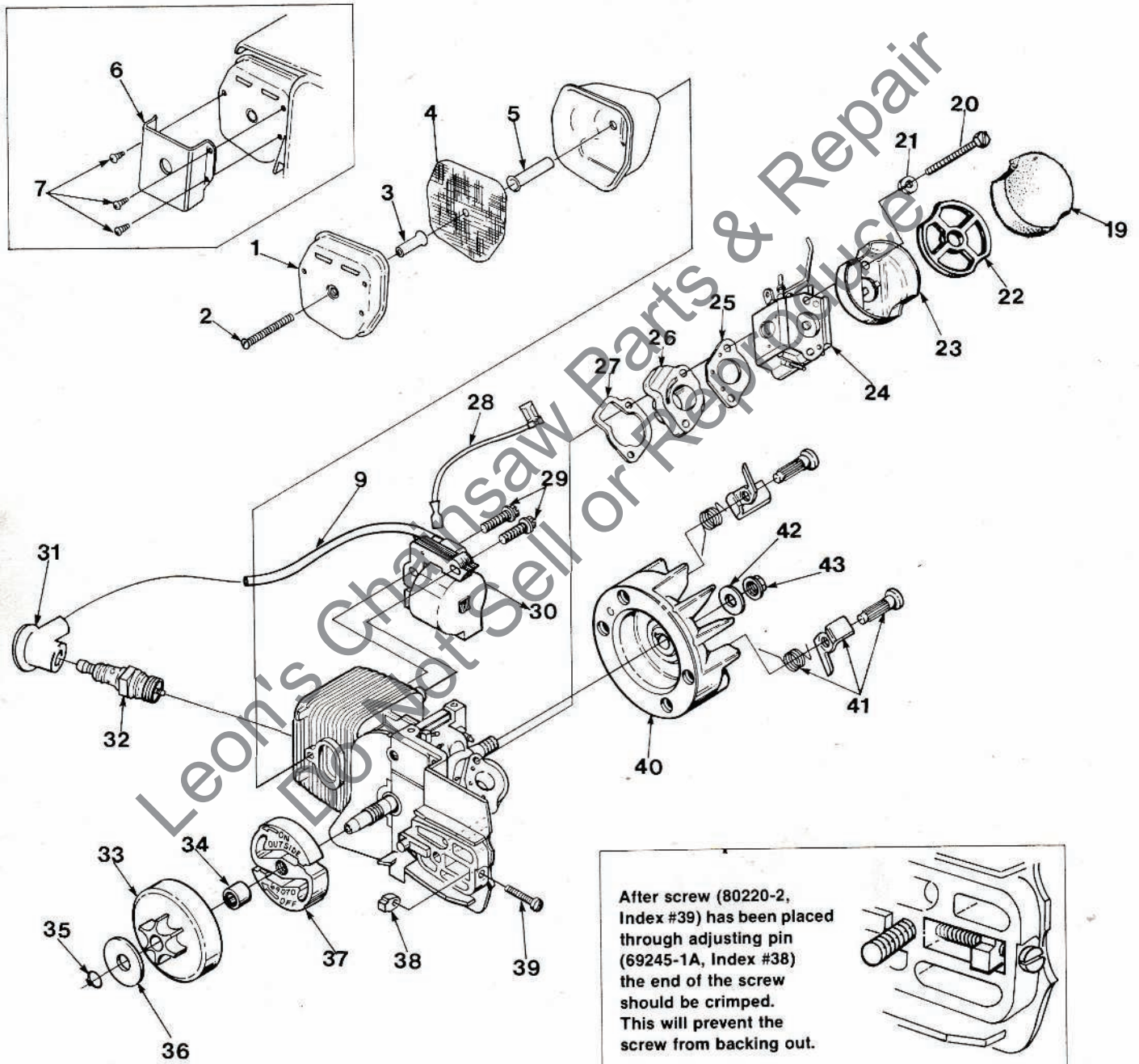
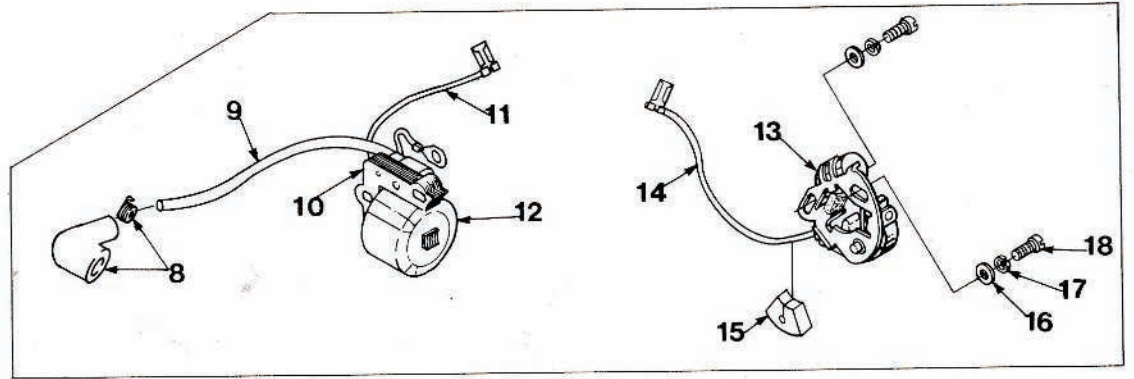


SUPER 2 FIGURE 1

| No. | Description | Part No. | Qty. | No. | Description | Part No. | Qty. |
|-----|------------------------------------|-----------|------|---|------------------------------------|-----------|------|
| 1 | NUT- Guide bar, 1/4 - 28 | 81065-2 | 1 | 30 | SCREW- Pan washer hd., 10-32 x 5/8 | 82239 | 2 |
| 2 | WASHER- Flat | 69309-1 | 1 | 31 | HANDLE BAR | A-70219-A | 1 |
| 3 | PLATE- Guide bar | 69360 | 1 | 32 | TANK- Fuel | A-70899 | 1 |
| 4 | SCREW- Pan hd., 10-24 x 1/2 | 82216 | 4 | | Includes: | | |
| 5 | SWITCH- Stop (grounding) | A-63938 | 1 | 33 | CAP- Tank fuel (red) (Note 1) | A-70894-A | 1 |
| | Includes: | | | | Includes: | | |
| 6 | NUT- Hex | 72084-A1 | 1 | 34 | GASKET- Fuel filler cap (Note 2) | 94838 | 2 |
| 7 | PLATE- "On-Off" | 70834 | 1 | 35 | VALVE- Check (duck bill) | 69451 | 1 |
| 8 | HOUSING- Engine | A-69882-B | 1 | 36 | FILTER- Fuel | A-69923 | 1 |
| | Includes: | | | | Includes: | | |
| 9 | PLATE- Starting instructions | 70835 | 1 | 37 | ELEMENT- Felt | 64083 | 1 |
| 10 | TRIGGER- Rear | 69106-A | 1 | 38 | LINE- Fuel | 70310-29 | 1 |
| 11 | ROD- Throttle | A-69136 | 1 | 39 | TANK- Oil | A-70898 | 1 |
| 12 | COVER- Handle | 69140-A | 1 | | Includes: | | |
| 13 | SPRING- Throttle rod | 69249 | 1 | 40 | FILTER- Oil | A-68593 | 1 |
| 14 | TRIGGER- Front | 69105 | 1 | 41 | LINE- Oil | 70309-24 | 1 |
| 15 | LEVER- Throttle | 69107 | 1 | 42 | LINE- Pressure | A-69358 | 1 |
| 16 | ROD- Throttle (front) | 69255-C | 1 | | Includes: | | |
| 17 | COVER- Air filter | 69263 | 1 | 43 | CONNECTOR- Oil | 69659-1A | 1 |
| 18 | SCREW- Hex washer hd., 10-32 x 5/8 | 80704 | 1 | 44 | VALVE- Check (duck bill) | 69451 | 1 |
| 19 | WASHER- Flat | 63606 | 1 | 45 | CAP- Tank (Oil) (Black) (Note 1) | A-70893-A | 1 |
| 20 | PULLEY- Starter | 69158 | 1 | | Includes: | | |
| 21 | ROPE- Starter #4, 34" long | A-93874 | 1 | | GASKET- Fuel filler cap (Note 2) | 94838 | 1 |
| | Includes: | | | | (see #34) | | |
| 22 | WASHER- Nylon | 93862 | 1 | NOTE 1: Tanks with internal threads require A-70445 Fuel cap and A-70446 Oil cap. If internal threads in tank are worn order new external threaded tank. | | | |
| 23 | SPRING- Rewind | 69217 | 1 | NOTE 2: Use 70826 Gasket in A-70893 and A-70894 external thread caps. Use 69585 gasket for caps with internal threads. | | | |
| 24 | HOUSING- Rewind starter | A-69540 | 1 | | | | |
| | Includes: | | | | | | |
| 25 | FILTER- Fuel tank valve | 69443 | 1 | | | | |
| 26 | SCREW- Hex 10-32 x 5/8 | 80704 | 4 | | | | |
| 27 | GRIP- Starter rope | 70211 | 1 | | | | |
| 28 | WASHER- Flat | 84025 | 1 | | | | |
| 29 | DECAL- Super 2 | 70240 | 1 | | | | |

SUPER 2

FIGURE 2



After screw (80220-2, Index #39) has been placed through adjusting pin (69245-1A, Index #38) the end of the screw should be crimped. This will prevent the screw from backing out.

SUPER 2 FIGURE 2

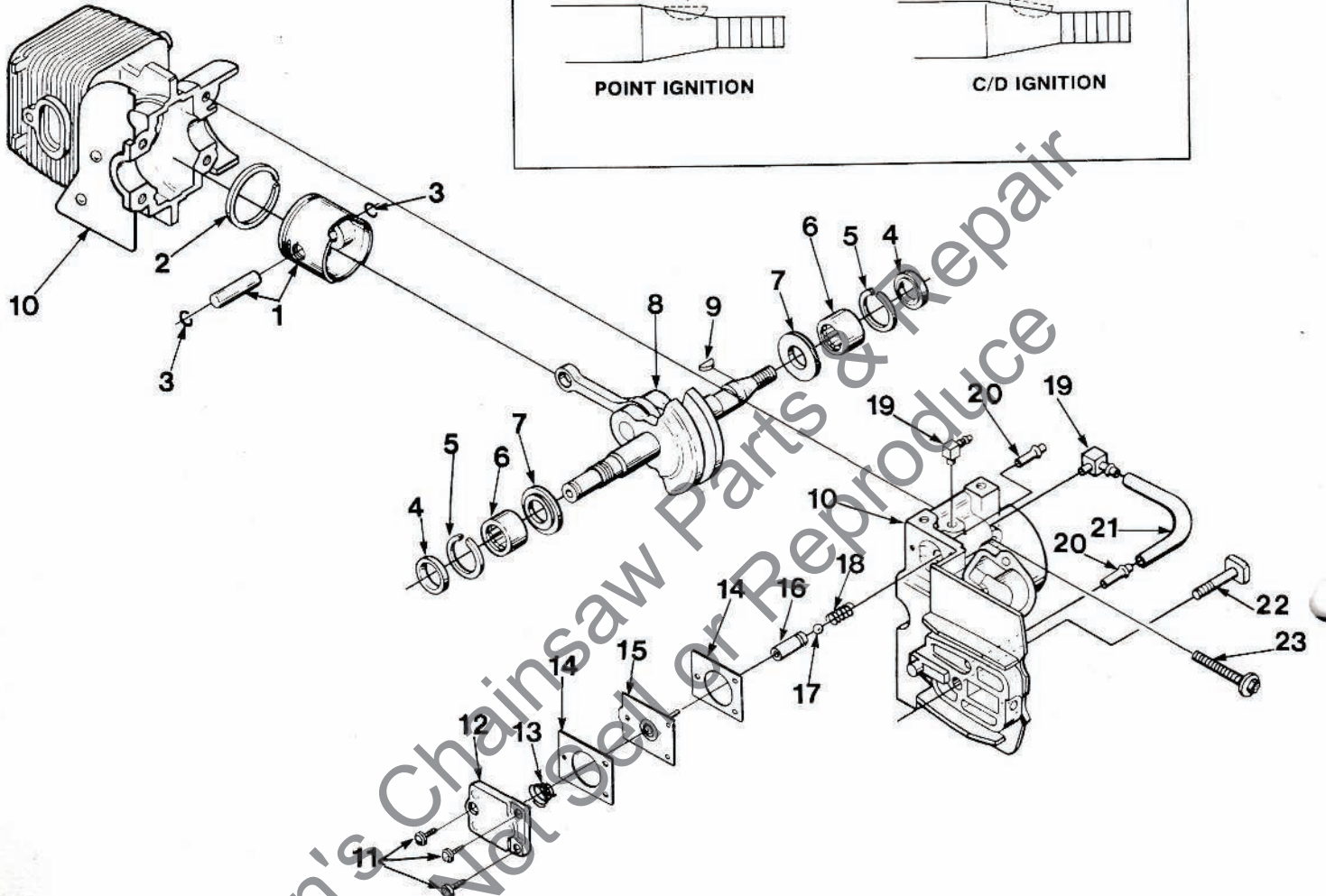
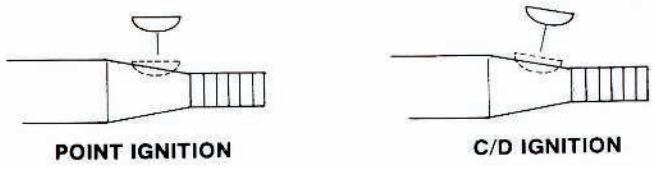
| No. | Description | Part No. | Qty. | No. | Description | Part No. | Qty. |
|-----|--|-----------|------|-----|---------------------------------------|-----------|------|
| | MUFFLER | A-94051-A | 1 | 22 | RETAINER- Air filter | 69457 | 1 |
| | Includes: | | | 23 | CUP- Air filter | 69148 | 1 |
| 1 | CAP- Muffler | 93985 | 1 | 24 | CARBURETOR- HDC-57 | A-94649 | 1 |
| | SPARK ARRESTOR | A-94139 | 1 | | CARBURETOR- HK-16B | A-70927-A | 1 |
| | Includes: | | | 25 | GASKET- Carburetor | 65016 | 1 |
| 2 | SCREW | 82320 | 1 | 26 | MANIFOLD- Intake | A-69373-A | 1 |
| 3 | SPACER | 93989 | 1 | 27 | GASKET- Intake manifold | 69143 | 1 |
| 4 | SCREEN- Spark arrestor | 93991 | 1 | 28 | LEAD- Ground (C/D Ignition) | A-94721 | 1 |
| 5 | SPACER | 93990 | 1 | 29 | SCREW- Hex w/washer, 8-32 x 3/4 | 82248 | 2 |
| 6 | KIT- Muffler Temperature (Super 2W) | A-93993 | 1 | 30 | MODULE- Ignition (C/D Ignition) | A-94711 | 1 |
| | Includes: | | | 31 | TERMINAL- Spark plug (C/D Ignition) | A-94754 | 1 |
| 7 | SCREW- #4 x .250 | 82342 | 3 | 32 | SPARK PLUG- Champion DJ-7J | 68616-S | 1 |
| | SPACER- (See Index #3) | 93989 | 1 | 33 | SPROCKET & DRUM | A-70221-B | 1 |
| | SCREEN- Spark Arrestor (See Index #4) | 93991 | 1 | | (6 Tooth 37 & 375 chain) | | |
| | SPACER- (See Index #5) | 93990 | 1 | | Includes: | | |
| 8 | TERMINAL- Spark plug (Point Ignition) | A-33055 | 1 | 34 | BEARING- Needle | 68512 | 1 |
| 9 | LEAD- High tension (Point Ignition) (Note 1) | 69326 | 1 | 35 | RING- Retaining- Clutch | 93972 | 1 |
| 10 | CORE- Coil (Point Ignition) | 69324 | 1 | 36 | WASHER- Thrust (clutch) | 69138 | 1 |
| 11 | LEAD- Stop switch (Point Ignition) | 69321 | 1 | 37 | CLUTCH- "S" | A-70351-A | 1 |
| 12 | COIL- Ignition (Point Ignition) | 69323 | 1 | 38 | PIN- Adjusting (see Insert) | 69245-1A | 1 |
| | RETAINER- Coil (Not shown) (Point Ignit.) | 69325 | 1 | 39 | SCREW- Adjusting (Fil hd. 8-32 x 1) | 80220-2 | 1 |
| 13 | POINT SET- Breaker (Point Ignition) | A-69336 | 1 | | (See Insert) | | |
| | Includes: | | | 40 | ROTOR & STARTER PAWL (C/D Ignition) | A-94717 | 1 |
| 14 | LEAD- Electrical | 70249 | 1 | | PHELON | | |
| 15 | SEAL- Lead (Point Ignition) | 69247 | 1 | | ROTOR & STARTER PAWL (Point Ignition) | A-69297-A | 1 |
| 16 | WASHER- Flat (Point Ignition) | 84025 | 2 | | PHELON | | |
| 17 | WASHER- Lock (Point Ignition) | 83060 | 2 | | Includes: | | |
| 18 | SCREW- Point Set (Point Ignition) | 88026 | 2 | 41 | KIT- Starter pawl | A-70285-A | 1 |
| 19 | FILTER- Air | 69141 | 1 | 42 | WASHER- Flat | 69145 | 1 |
| 20 | SCREW- Hex hd., 10-32 x 2 1/4 | 80481 | 2 | 43 | NUT- Rotor 5/16 - 24 | 81229 | 1 |
| 21 | WASHER- Lock, #10 | 83006-1 | 2 | | | | |

NOTE 1: For C/D Ignition cut wire to 6 1/2".

SUPER 2

FIGURE 3

Depending on ignition system, the Magneto Key must be oriented in the manner shown, *before* Rotor is assembled to shaft.



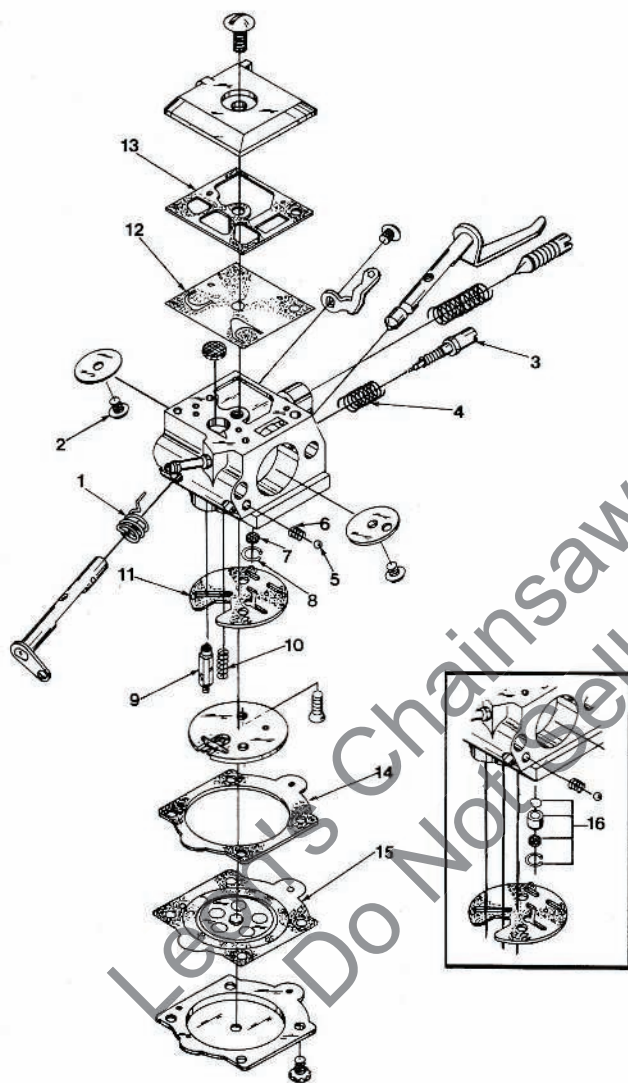
| No. | Description | Part No. | Qty. |
|-----|---------------------------------------|-----------|------|
| 1 | PISTON & PIN Includes: | A-70224-A | 1 |
| 2 | PISTON RING | 70205 | 1 |
| 3 | RING- Piston pin retaining | 65261 | 2 |
| 4 | SEAL | 94638 | 2 |
| 5 | SPACER- Seal | 69407 | 2 |
| 6 | BEARING- Needle | 12530 | 2 |
| 7 | BEARING- Needle (Opt.) | 68513 | 2 |
| 8 | WASHER- Thrust | 69093-A | 2 |
| 9 | CRANKSHAFT (C/D Ignition) | A-94712 | 1 |
| 10 | CRANKSHAFT (Point Ignition) | A-70352 | 1 |
| 11 | KEY- Magneto (see above) | 69250 | 1 |
| 12 | CYLINDER & CRANKCASE (C/D) | A-95072 | 1 |
| 13 | CYLINDER & CRANKCASE (Point Ignition) | A-70226 | 1 |
| 14 | Includes: | | |
| 15 | SCREW- Pan hd., 6-32 x 3/8 | 80571 | 3 |

| No. | Description | Part No. | Qty. |
|-----|-----------------------------|-----------|------|
| 12 | COVER- Oil pump | 69224-1C | 1 |
| 13 | SPRING- Oil pump | 69447 | 1 |
| 14 | GASKET- Oil pump | 69244-1 | 2 |
| 15 | PLUNGER- Oil pump | A-12356-B | 1 |
| 16 | BODY- Oil pump | 69343-1 | 1 |
| 17 | BALL- Check valve | 60051 | 1 |
| 18 | SPRING- Check valve | 68570 | 1 |
| 19 | FITTING- Oil line | 70204 | 2 |
| 20 | FITTING- Tube | 69833 | 2 |
| 21 | LINE- Oil | 70161 | 1 |
| 22 | BOLT- Guide bar | 69195 | 1 |
| 23 | SCREW- Sem hex hd. 8-32 x 1 | 88044 | 4 |

SUPER 2

CARBURETOR A-94649

HDC-57

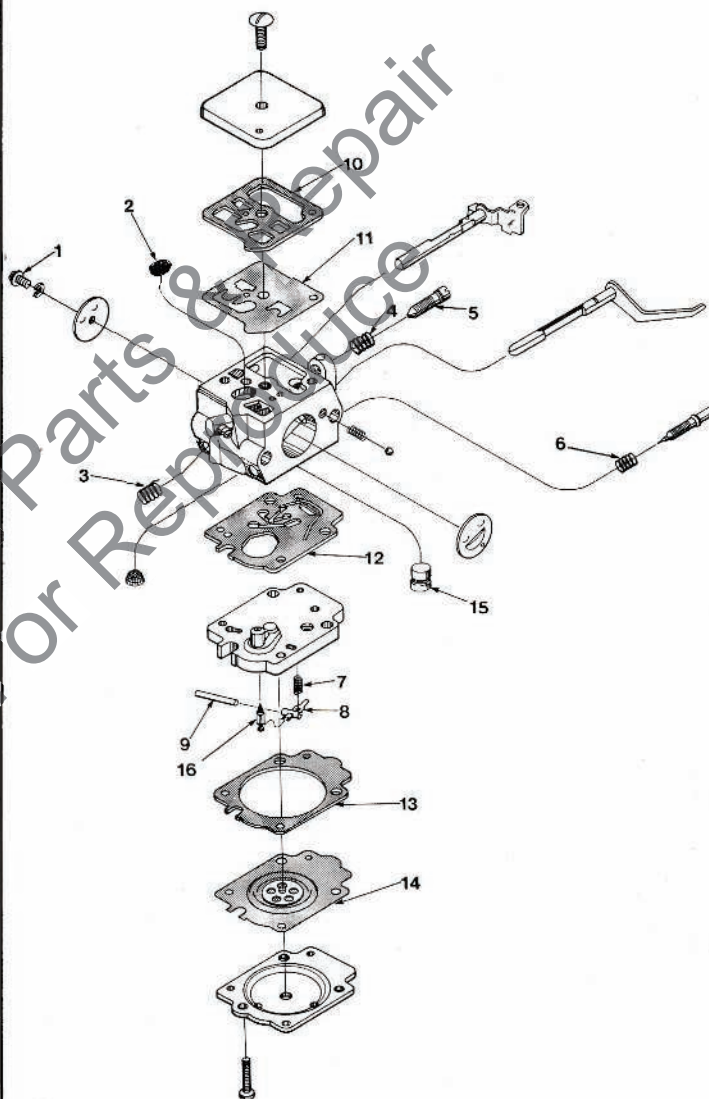


94056
70655
93910
94057

REPAIR KIT (Includes #1-15)
GASKET/DIAPHRAGM KIT (Includes #11-15)
CHECK VALVE REPAIR KIT (#16)
CIRCUIT PLATE- High altitude .029 (Not shown)

CARBURETOR A-70927-A

HK-16-B



93025
70094
93022
70109

REPAIR KIT (Includes 1-14)
GASKET DIAPHRAGM KIT (Includes 10-14)
NOZZLE (15)
INLET NEEDLE (16)

SUPER 2

ACCESSORIES

| | |
|---|-----------|
| FILTER- Air | A-24779 |
| Includes: | |
| Filter- Air (2) | 69141 |
| GASKET- Oil pump body (repair) | 69596 |
| KIT- Repair, (sprocket nose bar) | A-70239-B |
| KIT- Spark arrestor (Used with A-93686 Muffler and A-69253-1 Muffler) | A-69586-B |
| LINE- Fuel (10 ft. length) | 70310-99 |
| LINE- Oil (10 ft. length) | 70309-99 |
| SAFE•T•TIP | A-70776-A |
| Includes: | |
| SCREW- (Special) | 93695 |
| GREASE- Multi-use | 17193 |
| (Sprocket bearing - PT Guide Bar) | |
| KIT- Hand guard | A-70796-A |
| Includes: | |
| WASHER- Belleville (2) | 70728 |
| SPACER (1) | 70748 |
| SCREW- 10-32 x 5/8 (1) | 80572 |
| SCREW (1) | 82312 |
| CARRYING CASE | 94215 |
| STARTING ROPE- 250 ft. reel #4 | 68848 |

TOOLS

| | |
|---|-----------|
| SILASTIC- (Crankcase sealing) | 24823 |
| PLIERS- TRU-ARC (Sprocket retaining ring) | 17198 |
| PULLER- Magneto rotor | A-24747-A |
| Includes: | |
| BOLT- 5/16-18 x 1 3/4 (1) | 80288 |
| NUT- Hex 5/16-18 (2) | 81196 |
| WRENCH- Hex soc., 5/32 (for 10-24 screws) | 22126 |
| WRENCH- Hex soc., 9/64 | 23528 |
| (for socket head connecting rod screws) | |
| WRENCH- Spanner (clutch) | A-93791 |
| Includes: | |
| PIN- Clutch spanner (2) | 23717-A |
| TOOL- Carburetor check valve installation | 24972 |

HOMELITE DIVISION OF TEXTRON INC.

P.O. BOX 7047
14401 CAROWINDS BOULEVARD
CHARLOTTE, N.C. 28217

HOMELITE **TEXTRON**

Homelite Division of Textron Inc.