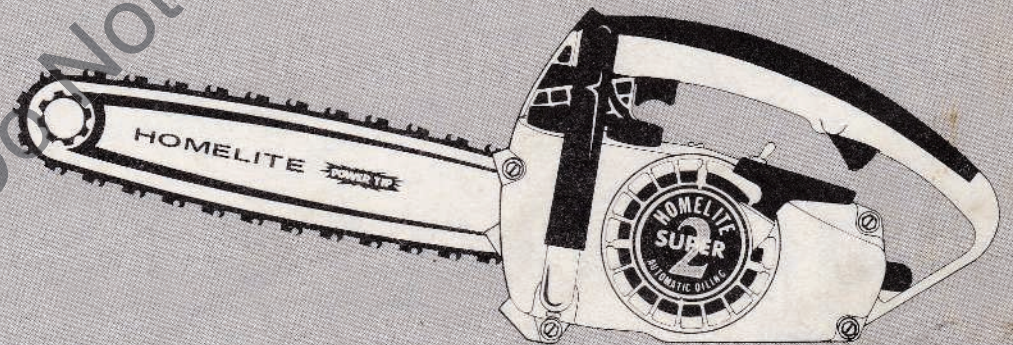


PARTS LIST

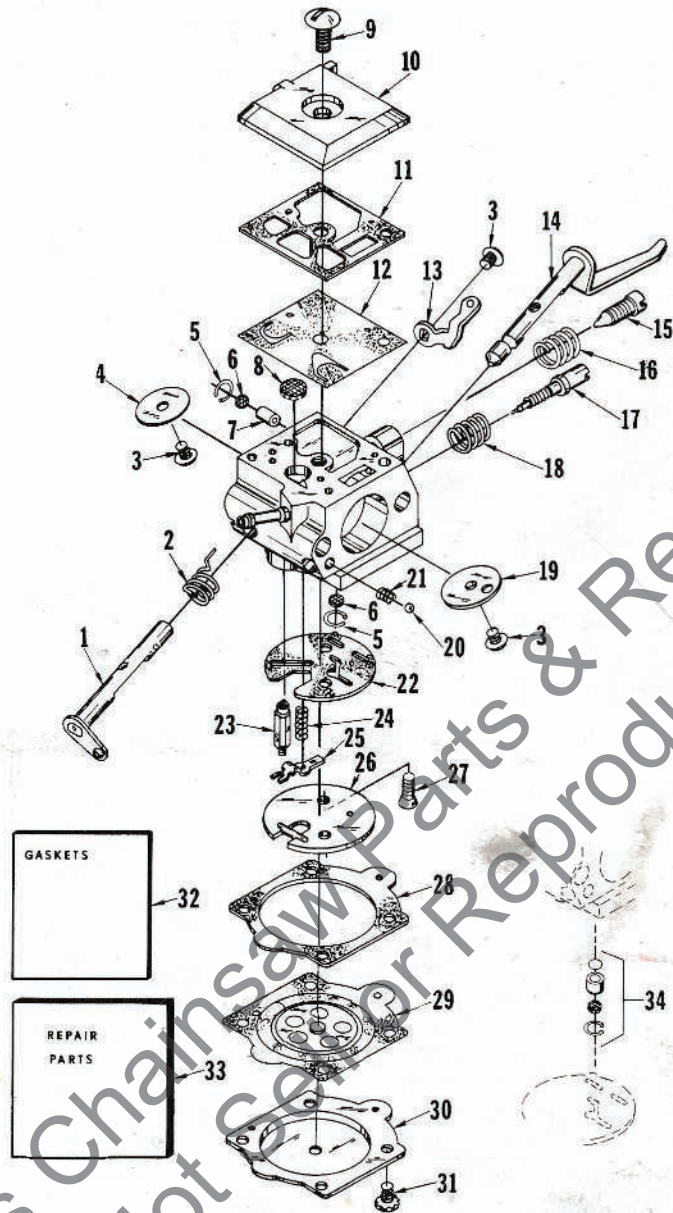


CHAIN SAW



PRICE .35
PART NO. 24983
PRINTED IN U.S.A.

SUPER 2

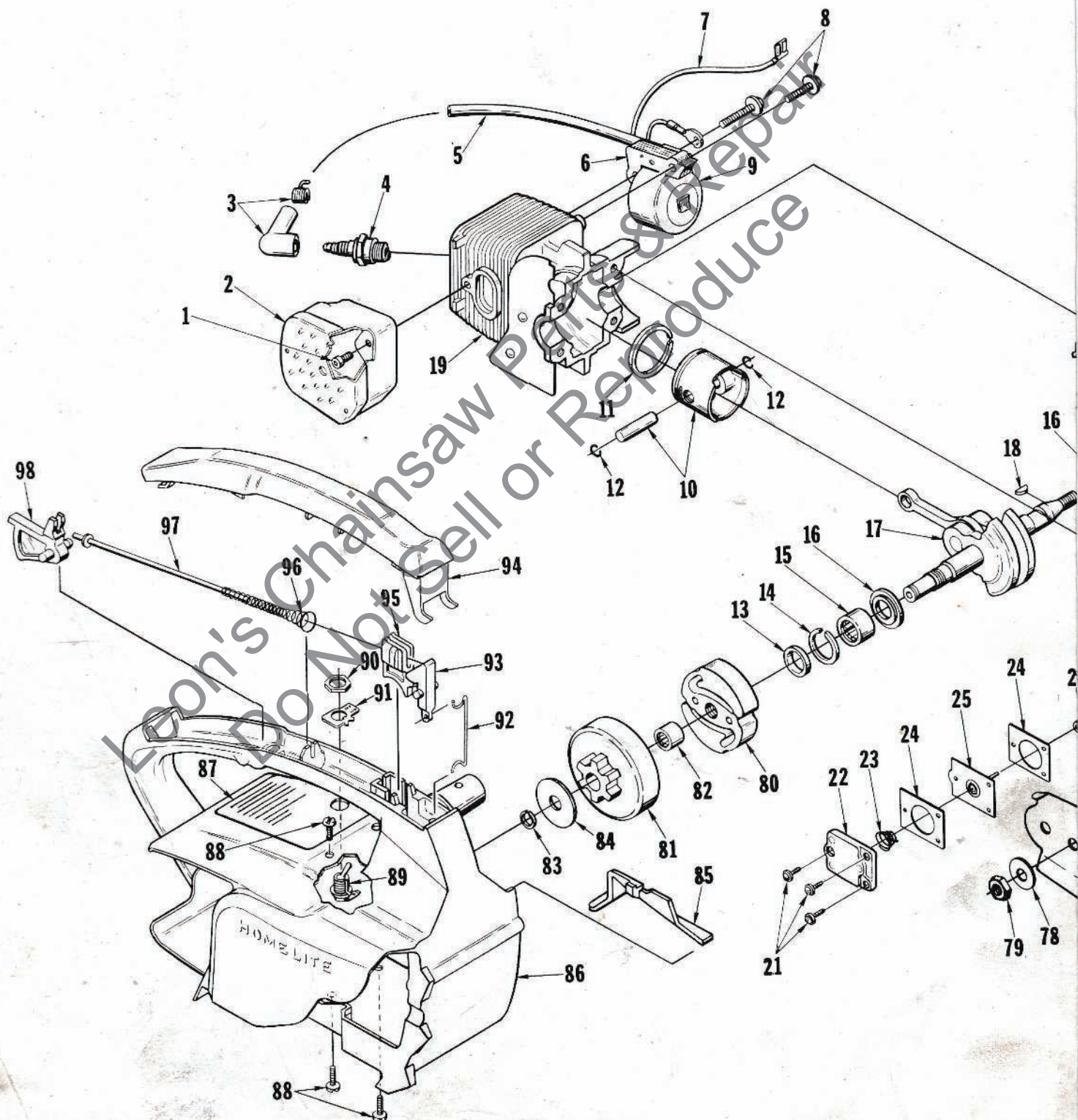


No.	Description	Part No.	Qty.
1	SHAFT-throttle	68636	1
2	SPRING-throttle return	†67376	1
3	SCREW-valve	†67372	3
4	VALVE-throttle	69961	1
5	RING-screen retaining	†67360	2
6	SCREEN-check valve	†67381	2
7	JET-limiting	69432	1
8	SCREEN-fuel inlet	†64243	1
9	SCREW-fuel pump cover	67374	1
10	COVER-fuel pump	67361	1
11	GASKET-fuel pump	67368	1
12	DIAPHRAGM-fuel pump	†67370	1
*13	STOP-throttle	70342	1
14	SHAFT-choke	69251	1
*15	NEEDLE-idle adjustment	70220	1
16	SPRING-idle adjustment needle	12199	1
17	NEEDLE-main adjustment	†69431	1
18	SPRING-main adjustment needle	†67377	1
19	VALVE-choke	69428	1

† Indicates contents of Repair Kit #70343

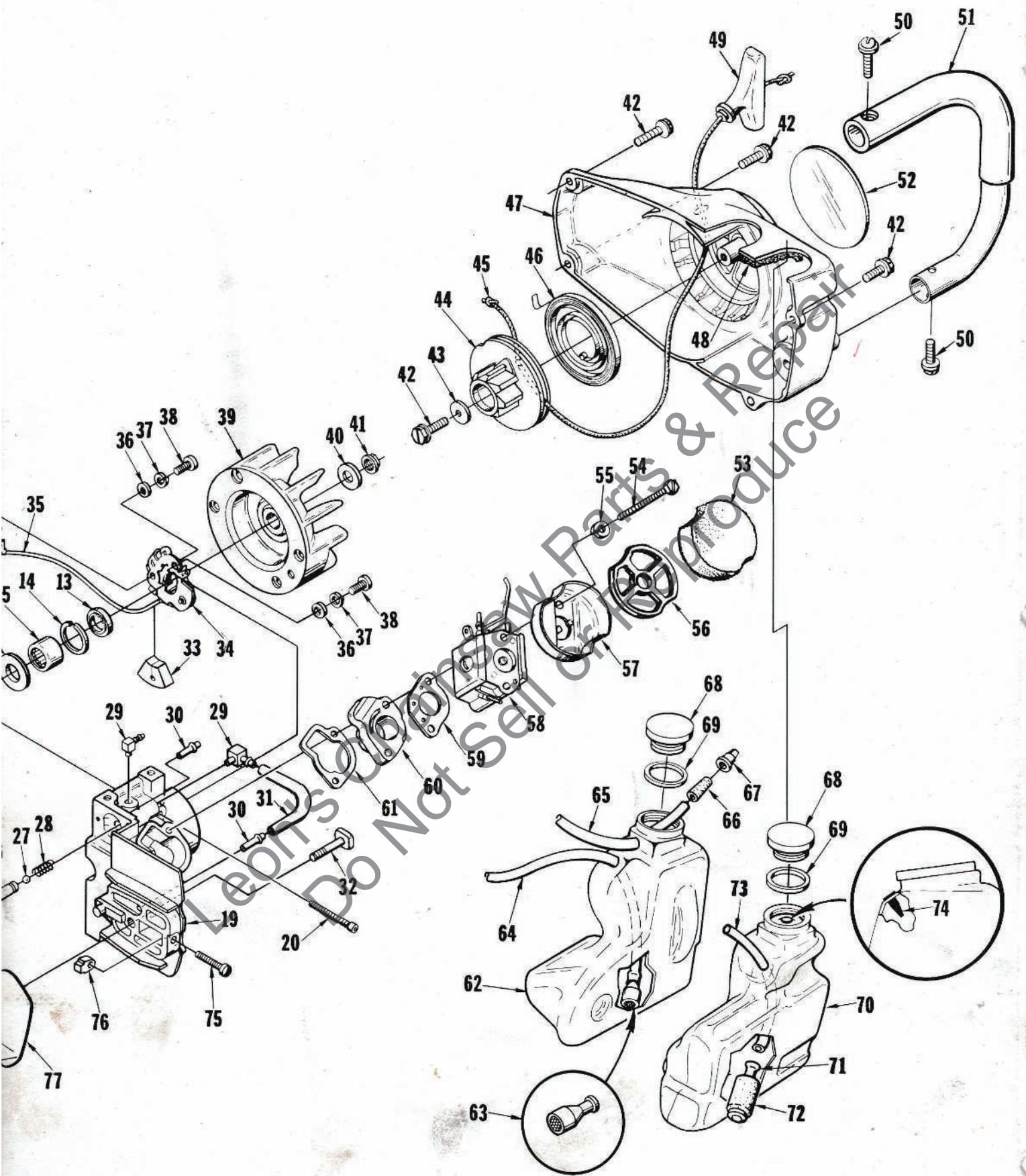
* Denotes new parts

No.	Description	Part No.	Qty.
20	BALL-check valve	†60051	1
21	SPRING-choke friction	†64238	1
22	GASKET-circuit	67367-A	1
23	NEEDLE-inlet	†64229	1
24	SPRING-metering lever	†67378	1
25	LEVER-metering	†67383	1
*26	PLATE-circuit	70331	1
27	SCREW-circuit plate	67375	2
28	GASKET-metering diaphragm	64231	1
29	DIAPHRAGM-metering	†67371	1
30	COVER-metering diaphragm	64224	1
31	SCREW-metering cover	64689	4
*32	REPAIR KIT	70343	1
33	GASKET SET	†67369-A	1
34	KIT-check valve repair (accessory)	65386	1
	Includes: VALVE-check		1
	SEAT-valve		1
	SCREEN-check valve	67381	1
	RING-screen retaining	67360	1
*	DRIVER-check valve (accessory)	24972	1



TM—Trademark of HOMELITE, a division of Textron Inc.
 © 1975, TEXTRON INC.

SUPER 2



No.	Description	Part No.	Qty.	No.	Description	Part No.	Qty.
1	SCREW-soc. hd., 10-24 x 1/2	82245	1	*49	GRIP-starter rope	70211	1
2	MUFFLER	A-69253-1	1	50	SCREW-pan washer hd., 10-32 x 5/8	82239	2
3	TERMINAL-spark plug	A-33055	1	*51	HANDLE BAR	A-70219	1
4	SPARK PLUG-Champion DJ-7J	68616-S	1	*52	DECAL-Super 2	70240	1
5	LEAD-high tension	69326	1	53	FILTER-air	69141	1
6	CORE-coil	69324	1	54	SCREW-hex hd., 10-32 x 2-1/4	80481	2
7	LEAD-stop switch	69321	1	55	WASHER-lock, #10	83006-1	2
8	SCREW-hex w/washer, 8-32 x 3/4	82248	2	56	RETAINER-air filter	69457	1
9	COIL-ignition	69323	1	57	CUP-air filter	69148	1
	RETAINER-coil (not shown)	69325	1	*58	CARBURETOR-HDC 27	A-70330	1
*	SHORT BLOCK	A-70225	1	59	GASKET-carburetor	65016	1
	Includes:			60	MANIFOLD-intake	A-69373	1
*10	PISTON & PIN	A-70224	1	61	GASKET-intake manifold	69143	1
	Includes:			*62	TANK-oil	A-69349	1
*11	PISTON RING	70205	1		Includes:		
12	RING-piston pin retaining	65261	2	63	FILTER-oil	A-68593	1
13	SEAL	68519	2	64	LINE-oil	69345	1
14	SPACER-scal	69407	2	65	LINE-pressure	A-69358	1
15	BEARING-needle	12530	2		Includes:		
	BEARING-roller (optional)	68513	2	66	CONNECTOR-oil line	69659-1	1
16	WASHER-thrust	69093	2	67	VALVE CHECK-duck bill	69451	1
*17	CRANKSHAFT	A-70352	1	68	CAP-tank (fuel and oil)	A-69277-A	2
18	KEY-magneto	69250	1		Includes:		
*19	CYLINDER & CRANKCASE	A-70226	1	69	GASKET-fuel filler cap	69585	1
	Includes:			*70	TANK-fuel	A-69348	1
20	SCREW-Sems hex, 8-32 x 1	88021	4		Includes:		
21	SCREW-pan hd., 6-32 x 3/8	80571	3	71	FILTER-fuel	A-69923	1
*22	COVER-oil pump	69224-1C	1	72	Includes: ELEMENT-felt	64083	1
23	SPRING-oil pump	69447	1	73	LINE-fuel	69344	1
24	GASKET-oil pump	69244	2	74	VALVE CHECK-duck bill	69451	1
25	PLUNGER-oil pump	A-69242	1	75	SCREW-adjusting fil. hd., 8-32 x 1	80220-2	1
26	BODY-oil pump	69343	1	76	PIN-adjusting	69254-1A	1
27	BALL-check valve	60051	1	77	PLATE-guide bar	69360	1
28	SPRING-check valve	68570	1	78	WASHER-flat	69309-1	1
*29	FITTING-oil line	70204	2	79	NUT-guide bar, 1/4-28	81065-2	1
30	FITTING-tube	69833	2	80	CLUTCH-"S"	69070-1	1
*31	LINE-oil	70161	1	*81	DRUM & SPROCKET-6 tooth, .37 chain	A-70221	1
32	BOLT-guide bar	69195	1		Includes:		
33	SEAL-lead	69247	1	82	BEARING-needle	58724	1
34	POINT SET-breaker	A-69386	1	83	RING-retaining (clutch)	69743	1
	Includes:			84	WASHER-thrust (clutch)	69138	1
*35	LEAD-electrical	70249	1	85	COVER-air filter	69263	1
36	WASHER-flat	64025-1	2	86	HOUSING-engine	A-69882	1
37	WASHER-lock	83060	2		Includes:		
38	SCREW-point set	82241	2	87	DECAL-starting instructions	69347-1A	1
39	ROTOR & STARTER PAWL	A-69297-A	1	88	SCREW-pan hd., 10-24 x 1/2	82216	4
40	WASHER-flat	69145	1	89	SWITCH-stop (grounding)	A-63938	1
41	NUT-rotor, 5/16-24	81229	1		Includes:		
42	SCREW-hex washer hd., 10-32 x 5/8	80704	5	90	NUT-hex	72084-A1	1
43	WASHER-flat	63606	1	91	PLATE-"ON-OFF"	63910	1
44	PULLEY-starter	69158	1	92	ROD-throttle (front)	69255-A	1
45	ROPE-starter #4, 30' long	69311	1	93	LEVER-throttle	69107	1
46	SPRING-rewind	69217	1	94	COVER-handle	69140-A	1
47	HOUSING-rewind starter	A-69540	1	95	TRIGGER-front	69105	1
	Includes:			96	SPRING-throttle rod	69249	1
48	FILTER-fuel tank valve	69443	1	97	ROD-throttle	A-69136	1
	* Denotes new parts			98	TRIGGER-rear	69106-A	1

ACCESSORIES

FILTER-air	A-24779
Includes:	
FILTER-air (2)	69141
GASKET-oil pump body	69596
*KIT-repair, sprocket nose bar	A-70239
Includes:	
BEARING-roller (21)	68236
KIT-spark arrestor	A-69586
Includes:	
SCREW-self-tapping, #6 x 1/4 (3)	80328
*KIT-starter pawl	A-70285
Includes:	
PIN-starter pawl (2)	70216
* SPRING-starter pawl (2)	69139
LINE-fuel (10 ft. length)	69636
LINE-oil (10 ft. length)	69657
REEL-250' (starting rope) #1	68848

TOOLS

PULLER-magneto rotor	A-24747-A
Includes:	
BOLT-5/16-18 x 1-3/4 (1)	80288
NUTS-hex, 5/16-18 (2)	81196
WRENCH-flat (for guide bar nut)	24814
WRENCH-hex soc., 5/32 (for 10-24 screws)	22126
WRENCH-hex soc., 9/64 (for 8-32 screws)	23528
WRENCH-socket (double end)	68651
WRENCH-spanner (clutch)	A-23696-A
Includes:	
PIN-clutch spanner (2)	23717-A

PAINT

SPRAY CAN-black	22772
SPRAY CAN-red	23475

* Denotes new parts

Part No.	Description	Qty.	Part No.	Description	Qty.	Part No.	Description	Qty.
12199	Spring-idle adjust.	1	*69139	Spring-starter pawl	2	69833	Fitting-tube	2
12530	Bearing-needle	2	69140-A	Cover-handle	1	A-69882	Housing-engine	1
22126	Wrench	1	69141	Filter-air	1	A-69923	Filter-fuel	1
22772	Paint-black	1	69143	Gasket-intake	1	69961	Valve-throttle	1
23475	Paint-red	1	69148	Cup-air filter	1	*70161	Line-oil	1
23528	Wrench	1	69158	Pulley-starter	1	*70204	Fitting-oil line	2
A-23696-A	Wrench-spanner	1	69195	Bolt-guide bar	1	*70205	Piston Ring	1
23717-A	Pin-clutch spanner	2	69217	Spring-rewind	1	*70211	Grip-starter rope	1
A-24747-A	Puller-magneto rotor	1	*69224-1C	Cover-oil pump	1	*70216	Pin-starter pawl	2
A-24779	Filter-air	1	A-69242	Plunger-oil pump	1	*A-70219	Handle Bar	1
24814	Wrench-flat	1	69244	Gasket-oil pump	2	*70220	Needle-idle adjust.	1
*24972	Driver-check valve	1	69247	Seal-lead	1	*A-70221	Drum & Sprocket	1
A-33055	Terminal-spark plug	1	69249	Spring-throttle rod	1	*A-70224	Piston & Pin	1
58724	Bearing-needle	1	69250	Key-magneto	1	*A-70225	Short Block	1
60051	Ball-check valve	2	69251	Shaft-choke	1	*A-70226	Cylinder & Crankcase	1
63910	Plate-"on-off"	1	A-69253-1	Muffler	1	*A-70239	Kit-repair	1
A-63938	Switch-stop	1	69254-1A	Pin-adjusting	1	*70240	Decal-Super 2	1
64083	Element-felt	1	69255-A	Rod-throttle	1	*70249	Lead-electrical	1
64224	Cover-metering dia.	1	69263	Cover-air filter	1	*A-70285	Kit-starter pawl	1
64229	Needle-inlet	1	A-69277-A	Cap-tank	2	*A-70330	Carburetor-HDC 27	1
64231	Gasket-metering dia.	1	A-69297-A	Rotor & Starter Pawl	1	*70331	Plate-circuit	1
64238	Spring-choke friction	1	69311	Rope-starter, #4	1	*70342	Stop-throttle	1
64243	Screen-fuel inlet	1	69321	Lead-stop switch	1	*70343	Repair Kit	1
65016	Gasket-carburetor	1	69323	Coil-ignition	1	*A-70352	Crankshaft	1
65261	Ring-piston pin	2	69324	Core-coil	1	FASTENING PARTS		
65386	Kit-check valve	1	69325	Retainer-coil	1	63606	Washer-flat	1
67360	Ring-screen retaining	3	69326	Lead-high tension	1	64689	Screw-metering	4
67361	Cover-fuel pump	1	A-69336	Point Set breaker	1	67372	Screw-valve	3
67367-A	Gasket-circuit	1	69343	Body-oil pump	1	67374	Screw-fuel pump	1
67368	Gasket-fuel pump	1	69344	Line-fuel	1	67375	Screw-circuit plate	2
67369-A	Gasket Set	1	69345	Line-oil	1	69093	Washer-thrust	2
67370	Diaphragm-fuel	1	69347-1A	Decal-starting instr.	1	69138	Washer-thrust	1
67371	Diaphragm-metering	1	*A-69348	Tank-fuel	1	69145	Washer-flat	1
67376	Spring-throttle	1	*A-69349	Tank-oil	1	69309-1	Washer-flat	1
67377	Spring-main adjust.	1	A-69358	Line-pressure	1	72084-A1	Nut-hex	1
67378	Spring-metering lever	1	69360	Plate-guide bar	1	80220-2	8-32 x 1	1
67381	Screen-check valve	3	A-69373	Manifold-intake	1	80288	Bolt-5/16-18 x 1-3/4	1
67383	Lever-metering	1	69407	Spacer-seal	2	80328	6 x 1/4	3
68236	Bearing-roller	21	69428	Valve-choke	1	80481	10-32 x 2-1/4	2
68513	Bearing-roller	2	69431	Needle-main adjust.	1	80571	6-32 x 3/8	3
68519	Seal	2	69432	Jet-limiting	1	80704	10-32 x 5/8	5
68570	Spring-check valve	1	69443	Filter-fuel tank	1	81065-2	Nut-1/4-28	1
A-68593	Filter-oil	1	69447	Spring-oil pump	1	81196	Nut-5/16-18	2
68616-S	Spark Plug	1	69451	Valve Check	2	81229	Nut-5/16-24	1
68636	Shaft-throttle	1	69457	Retainer-air filter	1	82216	10-24 x 1/2	4
68651	Wrench-socket	1	A-69540	Housing-rewind	1	82239	10-32 x 5/8	2
68848	Reel-250', #4	1	69585	Gasket-fuel filler cap	1	82241	Screw-point set	2
69070-1	Clutch-"S"	1	A-69586	Kit-spark arrestor	1	82245	10-24 x 1/2	1
69105	Trigger-front	1	69596	Gasket-oil pump	1	82248	8-32 x 3/4	2
69106-A	Trigger-rear	1	69656	Line-fuel	1	83060	Washer-lock	2
69107	Lever-throttle	1	69657	Line-oil	1	83006-1	Washer-#10	2
A-69136	Rod-throttle	1	69659-1	Connector-oil line	1	84025-1	Washer-flat	2
			69743	Ring-retaining	1	88021	8-32 x 1	4

* Denotes new parts



A textron DIVISION, CHARLOTTE, N.C. U.S.A. 28217

ED 15761Z