

PARTS LIST

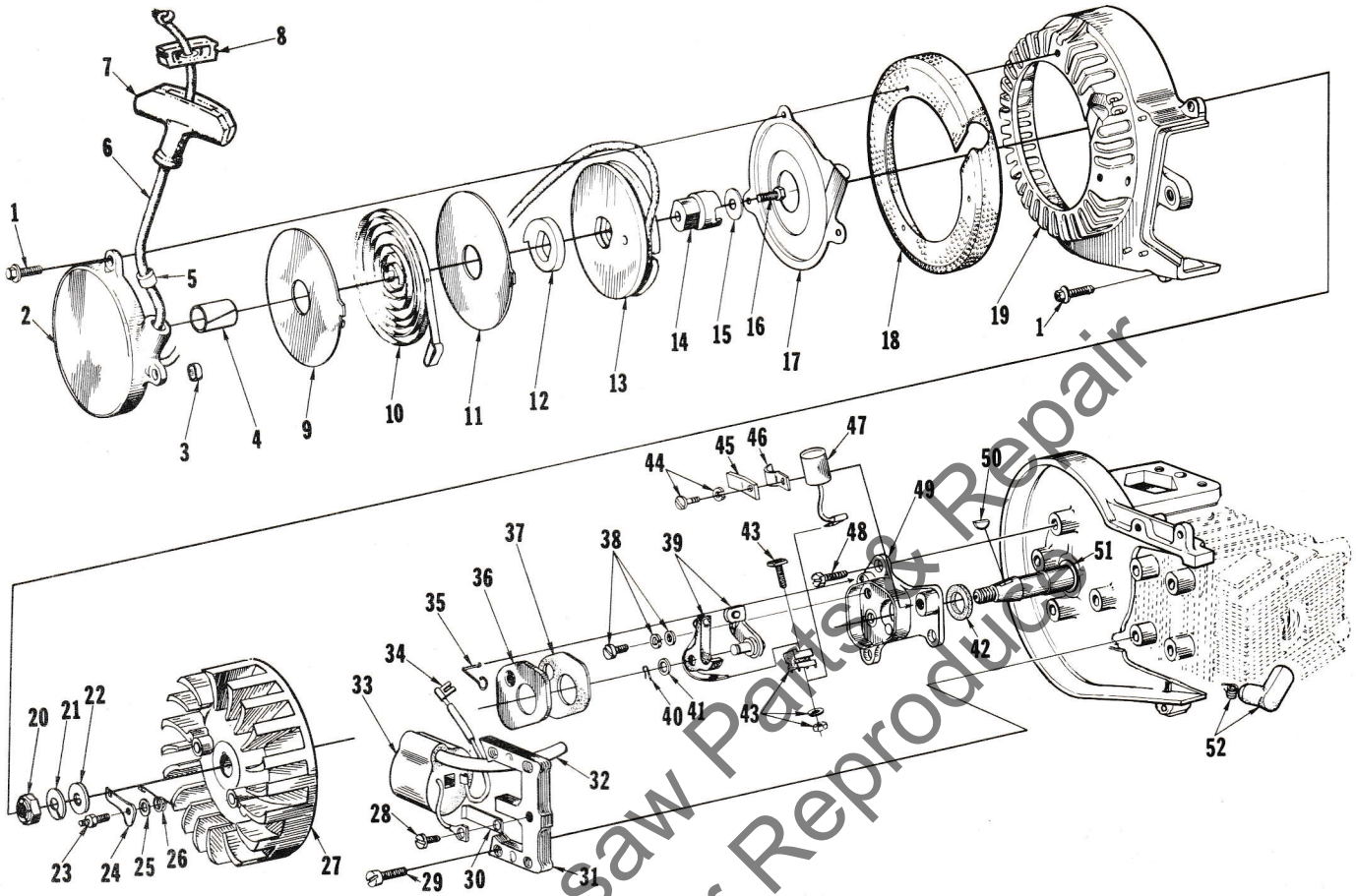


HOMELITE **TEXTRON**

Homelite Division of Textron Inc

SUPER 2100

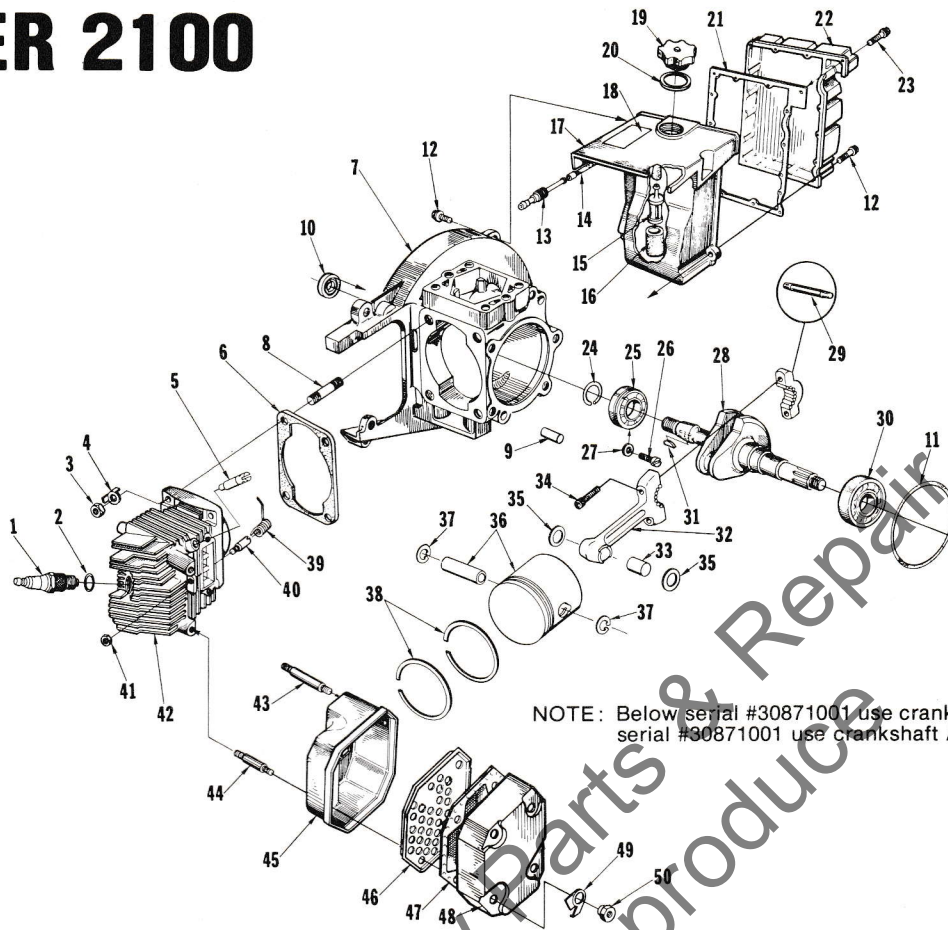
FIGURE 1



No.	Description	Part No.	Qty.	No.	Description	Part No.	Qty.
1	SCREW- Hex, 12-24 x 3/4	80867	7	25	WASHER- Flat	70901	2
	STARTER- Complete	A-64976-A	1	26	SPRING- Starter pawl	65375	2
	Includes:			27	ROTOR- Magneto	65480	1
	COVER- Starter	A-64178-3A	1	28	SCREW- Ground lead	64090	1
	Includes:			29	SCREW- Coil core	82248	4
3	BUSHING- Rewind	65830	1	30	SPRING- Coil wedge	63726	1
4	BUSHING- Starter post	64443-1	1	31	CORE- Coil	67515	1
5	BUSHING- Rope	67177	1	32	LEAD- Hi-tension	67514	1
6	ROPE- Starter	A-93875	1	33	COIL	67516	1
	Includes:			34	LEAD- Ground	A-59031	1
	WASHER (not shown)	93862	1	35	SPRING- Cover	76413	1
7	GRIP- Starter rope	A-69962-A	1	36	COVER- Breaker box	65370-A	1
	Includes:			37	GASKET- Cover	65369	1
8	INSERT- Rope retaining	70018-A	1	38	SCREW GROUP- Points	76421	1
9	SHIELD- Spring (inner)	65711	1	39	POINTS- Breaker	A-63631-A	1
10	SPRING- Rewind	64180-A	1		Includes;		
11	SHIELD- Spring (outer)	65712	1	40	SPRING- Lock	28008	1
12	LOCK- Spring	64049-A	1	41	WASHER- Point	28028	1
13	PULLEY- Starter	64050-1	1	42	FELT- Sealing	65371	1
14	CUP- Starter	64979-1	1	43	TERMINAL BLOCK GROUP	A-58934	1
15	WASHER- Flat	58763	1	44	SCREW GROUP- Condenser	30261	1
16	SCREW- Hex spinlock	80648	1	45	CLIP- Cover	67449	1
17	SHIELD- Sawdust	64052	1	46	CLAMP- Condenser	74514	1
18	SCREEN- Fan housing	64843-2	1	47	CONDENSER	63626	1
19	HOUSING- Fan	A-64975-1	1	48	SCREW- Hex, 12-24 x 9/16	80899	3
20	NUT- Rotor	65373-1	1	49	BOX- Breaker	67512	1
21	WASHER- Lock, 7/16	83019	1	50	KEY- Woodruff	75078	1
22	WASHER- Flat, 7/16	84047	1	51	WASHER- Retaining	65372	1
23	STUD- Shoulder	58757-E	2	52	TERMINAL- Spark plug	A-33055	1
24	PAWL- Starter	58756	2				

SUPER 2100

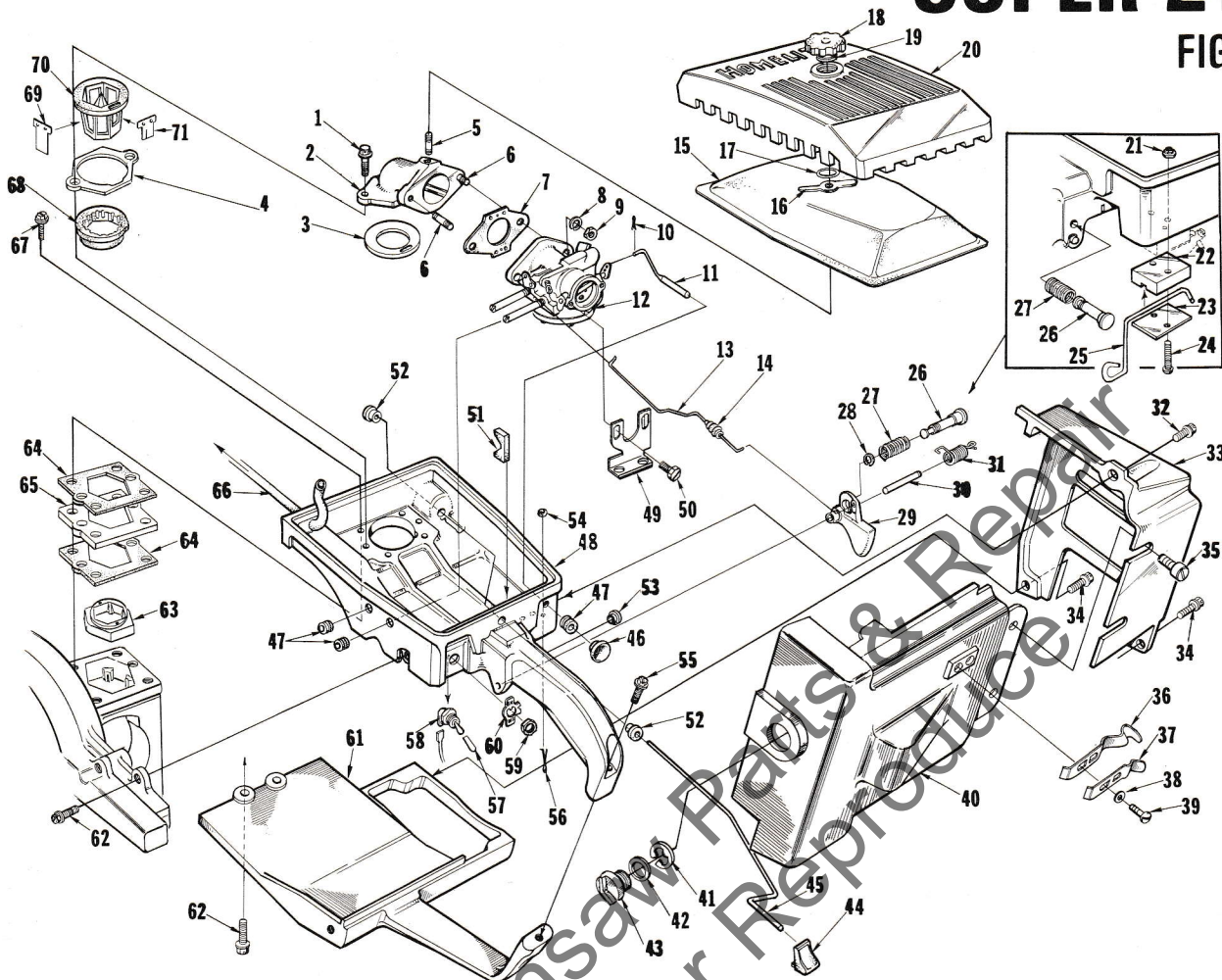
FIGURE 2



No.	Description	Part No.	Qty.	No.	Description	Part No.	Qty.
1	SPARK PLUG	68716-S	1	31	KEY- Woodruff	75078	1
2	Includes: GASKET	25038	1	32	ROD- Connecting	A-67715	1
3	NUT- Hex, 5/16-24	25412	4		Includes:		
4	WASHER- Tab lock	65367-1	4	33	BEARING- Needle	55664	1
5	VALVE- Compression release	A-67465	1	34	SCREW- Soc. cap, 10-32 x 3/4	82157	2
6	GASKET- Cylinder	67022	1	35	WASHER- Thrust	67673	2
7	CRANKCASE	A-67468-B	1	36	PISTON & PIN	A-69241-B	1
	Includes:				Includes:		
8	STUD- Cylinder	72787	4	37	RING- Piston pin retaining	64969	2
9	PIN- Dowel	74332	2	38	PISTON RING	69193-A	2
10	SEAL	58308-B	1	39	SPRING- Release valve	65454	1
11	"O" RING	68072	1	40	POST- Spring	65453	1
12	SCREW- Hex, 12-24 x 3/4	80867	4	41	NUT- Flexlock, #6-32	81126	1
13	FITTING- Fuel outlet	58364	1	42	CYLINDER	A-69735	1
14	LINE- Flexible	55805	1		Includes:		
15	FILTER- Fuel	A-59251	1		GASKET- Cyl. (see #6)	67022	1
	Includes:			43	STUD- Muffler (long)	65419	2
16	FILTER- Felt	59253-1	1	44	STUD- Muffler (short)	64429-2	2
17	TANK- Fuel	58172-4	1	45	BODY- Muffler	A-65458-1A	1
18	DECAL- Caution	69847	1	46	BAFFLE- Muffler	65459-A	1
19	CAP- fuel tank	A-65741-A	1	47	ARRESTER- Spark	A-65583	1
	Includes:			48	CAP- Muffler	A-67014-1	1
20	GASKET	65358	1	49	WASHER- Tab lock	65579-1	4
	VALVE- Vent (not shown)	69451	1	50	NUT- Hex, 1/4-20	65806	4
21	GASKET- Fuel tank	58367	1		KIT- Muffler cap & shield (quiet type)	A-67689	1
22	COVER- Fuel tank	59920-2	1		Includes:		
23	SCREW- Rd., #6 x 1/2	80513	15		CAP- Muffler	A-67014-1	1
24	RING- Retaining	58319-A	1		NUT- Muffler	65806	4
25	BEARING- Ball	58190-S	1		SHIELD- Muffler	65807-2	1
26	SCREW- Bearing retaining	19238-3	2		SCREW- Hex hd., 12-24 x 1-11/16	58963	2
27	WASHER- Lock	83061	2		SCREW- Pan hd., 10-32 x 3/8	80579	2
28	CRANKSHAFT (See Note)	A-69197	1		WASHER- Flat, #10	84003-1	2
	CRANKSHAFT (See Note)	A-67588	1		Accessory		
29	ROLLER- Needle (set of 26)	A-69058	1		KIT- Heat exchanger (not shown)	A-67608	1
30	BEARING- Ball	64958-S	1		INCLUDES:		
					SCREW- Pan hd., 10-32 x 7/16	80578	2

SUPER 2100

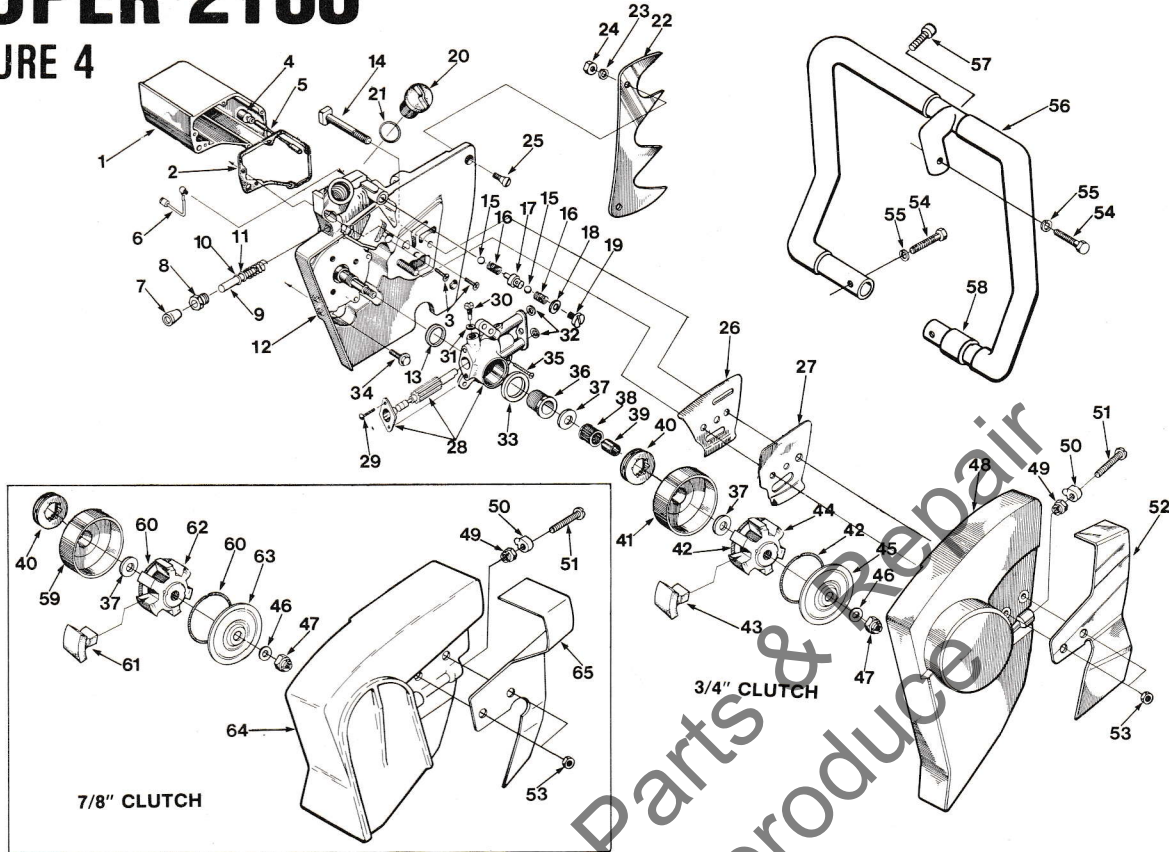
FIGURE 3



No.	Description	Part No.	Qty.	No.	Description	Part No.	Qty.
1	SCREW- Hex, 12-24 x 1-1/4	80994	2	37	CLAMP- Lower	65755-1	1
2	MANIFOLD- Intake	A-65945-B	1	38	WASHER- Flat, #10	84003-1	2
3	Includes:			39	SCREW- Pan, 6-32 x 1/4	82159	2
4	GASKET- Manifold	67121	1	40	SHIELD- Cylinder	A-68121	1
5	GASKET- Reed retainer	65903	1	41	Includes:		
6	STUD- Cover mounting	58361	1	42	RING- Retaining	68095	1
7	STUD- Carburetor mounting	27464	2	43	"O" RING	68891	1
8	GASKET- Carburetor	63655-A	1	44	SCREW- Cylinder shield mounting	68096	1
9	WASHER- Lock, 1/4	83009	2	45	BUTTON- Oil pump rod	58357	1
10	NUT- Hex, 1/4-20	81013-1	2	46	ROD- Oil pump	58356-B	1
11	PIN- Cotter	86324	1	47	BUTTON- Choke	57289-1	1
12	ROD- Choke	A-58354	1	48	GROMMET	58362	3
13	CARBURETOR (HL-273A)	A-67130	1	49	HANDLE- Throttle	A-65750-A	1
14	ROD- Throttle	59338-A	1	Includes:			
15	BOOT- Throttle rod	58348	1	50	BRACKET- Carburetor	67208-1	1
16	FILTER ELEMENT- Air	A-69306	1	51	SCREW- Hex, 10-32 x 5/16	82175	4
17	Includes:			52	STOP- Pump rod	58930	1
18	GROMMET- Rubber	63878	1	53	BUSHING- Oil pump rod	58929	2
19	RING- Retaining	58319-A	1	54	BUSHING- Throttle latch	59064	1
20	NUT- Cover mounting	A-70326	1	55	WASHER- Felt	63290	1
21	"O" RING	69052	1	56	SCREW- Hex, 1/4-20 x 1-1/4	80912	1
22	COVER- Air filter	59230-1	1	57	PIN- Cotter	86301	1
23	NUT- Hex, 6-32	81238	2	58	SLEEVE- Grounding switch	69092	1
24	GUIDE- Lever	65463-1	1	59	SWITCH- Toggle	A-57650-3A	1
25	PLATE- Lever guide	64985-1	1	Includes:			
26	SCREW- Fil, 6-32 x 5/8	80461	2	60	NUT	72084-A1	1
27	LEVER- Compression release	64984-A	1	61	PLATE- Indicating	70839	1
28	PIN- Throttle latch	58404	1	62	BRACE- Throttle handle	64837-4	1
29	SPRING- Latch pin	58405	1	63	SCREW- Hex, 12-24 x 3/4	80867	3
30	RING- Retaining	58409	1	64	BLOCK- Filler	67117	1
31	TRIGGER- Throttle	58181-A	1	65	GASKET- Carburetor chamber	64841	2
32	SHAFT- Trigger	58353	1	66	SPACER	64840	1
33	SPRING- Trigger	58352-A	1	67	LINE- Fuel	70308-21	1
34	SCREW- Hex, 12-24 x 5/8	80676	1	68	SCREW- Hex, 12-24 x 1	80864	4
35	SHIELD- Muffler	65807-2	1	69	RETAINER- Reed	64834	1
36	CLAMP- Upper	65754-1	1	70	REED	63166-A	5
				71	SEAT- Reed valve	64833-1	1
					REED- Split	67107-A	1

SUPER 2100

FIGURE 4



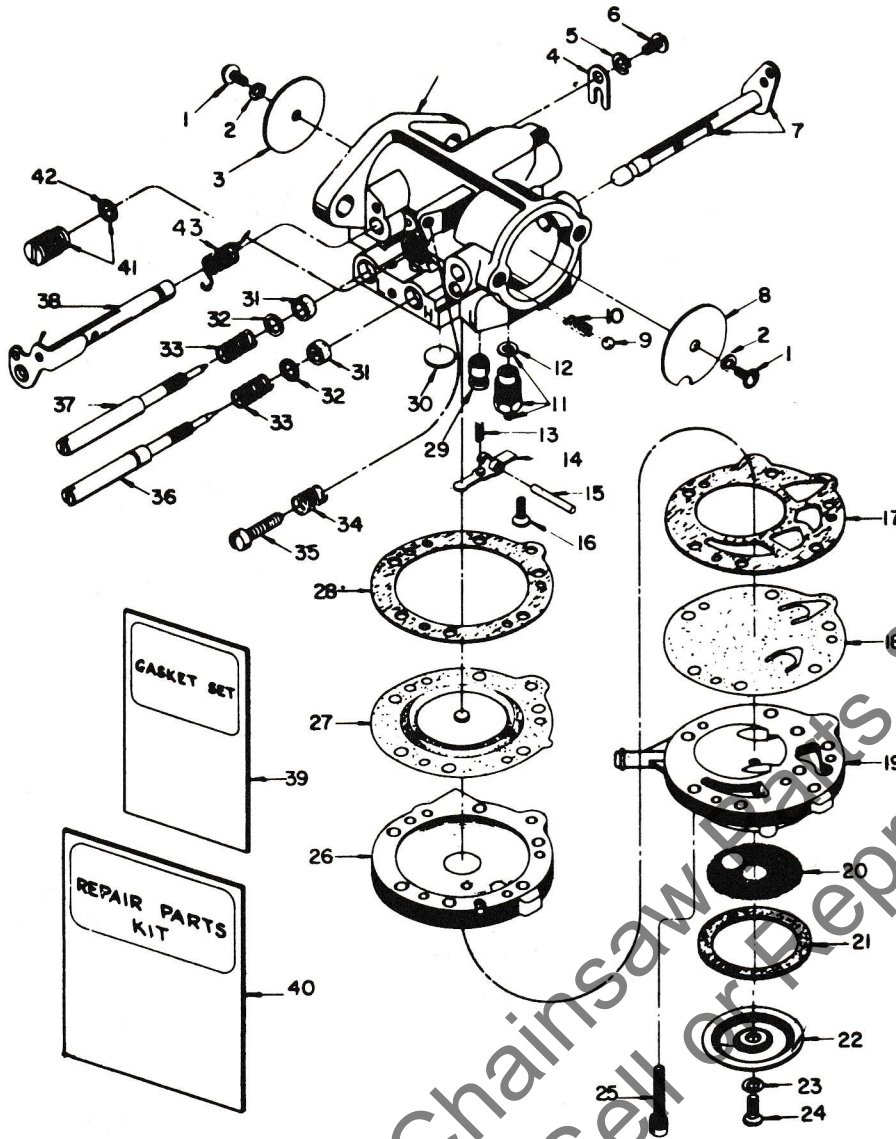
No.	Description	Part No.	Qty.	No.	Description	Part No.	Qty.
1	RESERVOIR- Oil	A-58341-A	1	32	"O" RING	59074	2
	Includes:			33	SEAL- Felt	59926	1
2	GASKET- Oil reservoir	67122	1	34	SCREW- Hex, 1/4-20 x 13/16	82201	5
3	SCREW- Fil, 8-32 x 3/4	82156	5	35	SCREW- Pan, 8-32 x 1/2	80560	3
	PIN- Cotter (not shown)	86301	1	36	WORM- Oil pump	63893	1
4	FILTER- Oil	A-64293	1	37	WASHER- Thrust	56132	2
5	LINE- Oil pickup	59674	1	38	BEARING- Needle caged	65393	1
6	LINE- Oil pickup	A-64010	1	39	RACE- Inner	65348	1
7	CONNECTOR- Pump rod	67118	1	40	SPROCKET- Splined		
8	NUT- Plunger rod	67128	1		.404 pitch, 8 tooth	65960	1
9	PUMP- Manual	A-68061-A	1	41	1/2 pitch, 6 tooth (optional)	67017	1
	Includes:			42	DRUM & HUB (5 splined) 3/4"	A-67239	1
10	"O" RING	59074	1	43	SPRING, Clutch	67441	2
11	"O" RING	58406	1	44	SHOE, Clutch	69818-1	6
12	DRIVECASE	A-68100	1	45	SPIDER, Clutch	67591-1	1
	Includes:			46	COVER- Clutch	67120-A	1
	TUBE- Oil (not shown)	59023	1	47	WASHER- Flat	64027	1
13	SEAL	56256-B	1	48	NUT- Hex 3/8 - 24	81192	1
14	BOLT- Guide bar	58334-A	2	49	COVER- Drivecase	A-64074-4	1
15	BALL- Steel	25527	2		Includes:		
16	SPRING- Check valve	59022	2	49	NUT- Hex lock 5/16 - 18	81235	1
17	SEAT- Valve	A-67959	1	50	PIN- Adjusting	55613-1	1
	Includes:			51	SCREW- Round hd. 5/16-18 x 2 1/8	82219	1
	"O" RING (not shown)	58406	1	52	PLATE- Guard	64029-2	1
18	GASKET- Valve cap	67123	1	53	NUT- Hex 3/8 - 16	81089-2	2
19	CAP- Check valve	67958	1	54	SCREW- Hex 5/16-18 x 1 1/2	80087	3
20	CAP- Oil filler (vented)	A-63717-C	1	55	WASHER- Lock 5/16	83003	3
	Includes:			56	HANDLE BAR- Wrap around	A-69208	1
	VALVE- Vent (not shown)	69451	1		HANDLE BAR- Flush cut (optional)	A-69233	1
21	GASKET	56607	1		Includes:		
22	KIT- Spiked bumper	A-63089	1	57	SCREW- Socket 5/16-18 x 1	80308	1
	KIT- Spiked bumper (West Coast)	69275	1	58	BUSHING- Handle bar	69317	1
	KIT- Spiked bumper	A-58543	1	59	DRUM & HUB (6 splined)	A-69203	1
	Includes:				DRUM & HUB (7 splined) (Note 1)	A-68727-A	1
23	WASHER- Lock, 1/4	83009	2		Includes:		
24	NUT- Hex, 1/4-20	81053	2		BUSHING- Clutch	68422-1	1
25	SCREW- Flat, 1/4-20 x 3/4	80053	2	60	SPRING- Clutch	68392	2
26	PLATE- Guide bar (inner)	67669-A	1	61	SHOE- Clutch	55076-9	6
27	PLATE- Guide bar (outer)	67670-A	1	62	SPIDER- Clutch	67591-3	1
28	PUMP- Automatic oil (long stroke)	A-67579	1	63	COVER- Clutch	56238-A	1
	PUMP- Automatic oil (short stroke)	A-64073-A	1	64	COVER- Drivecase 7/8"	67213-2	1
	Includes:			65	PLATE- Guard	67399-1	1
29	SCREW- Pan, 4-40 x 1/4	80919	2				
30	SCREW- Cam	64102-A	1				
31	GASKET- Cam screw	59736	1				

NOTE 1: A-68727-A Drum & Hub must be used w/Bushing 68422-1.

SUPER 2100

Carburetor

A-67130
HL273A



No.	Description	Part No.	Qty.
1	†SCREW- Rd., 4-40 x 1/4	80591	2
2	†WASHER- Lock	83008-1	2
3	SHUTTER- Throttle	67478	1
4	CLIP- Throttle shaft	73086	1
5	WASHER- Lock, #8	83000	1
6	SCREW- Flat hd., 8-32 x 5/16	73088	1
7	SHAFT & LEVER- Choke	A-64627	1
8	SHUTTER- Choke	64625	1
9	BALL- Check, 5/32 diameter	25527	2
10	SPRING- Choke friction	73264	1
11	NEEDLE & SEAT	A-64628	1
12	GASKET- Inlet seat	55344	1
13	†SPRING- Control lever	65603	1
14	†LEVER- Inlet control	55747	1
15	†PIN- Fulcrum	64622	1
16	†SCREW- Fulcrum pin retaining	58992	1
17	GASKET- Pump diaphragm	58529	1
18	†DIAPHRAGM- Fuel pump	57729	1
19	BODY- Fuel pump	59265	1
20	†SCREEN- Fuel inlet	58527	1
21	GASKET- Pump strainer	55751	1
22	COVER- Strainer	58526	1

No.	Description	Part No.	Qty.
23	GASKET- Strainer cover screw	28098	1
24	†SCREW- Pump cover	58525	1
25	SCREW- Body w/lockwasher	55316	6
26	COVER- Main diaphragm	A-58533	1
27	†DIAPHRAGM- Main control	57829	1
28	GASKET- Cover diaphragm	57824	1
29	NOZZLE- Main	A-67479	1
30	†PLUG- Expansion	30818	1
31	PACKING- Adjusting screw	75733	2
32	WASHER- Adjusting screw	75735	2
33	†SPRING- Adjusting needle	73075	2
34	†SPRING- Throttle stop	28064	1
35	†SCREW- Idle stop	71509	1
36	NEEDLE- Adjusting (main mixture)	67477	1
37	VALVE- Needle (idle mixture)	58680	1
38	SHAFT & LEVER- Throttle	A-67480	1
39	†GASKET & PACKING SET	68657	1
40	REPAIR PARTS KIT	68663	1
41	VALVE- Governor	A-65891	1
42	GASKET	74060	1
43	†SPRING- Throttle return	64624	1
	GASKET & DIAPHRAGM	63590	1

† Indicates contents of Repair Parts Kit.

SUPER 2100

TOOLS

COLLAR- Bearing installation	23373-4
COLLAR- Main bearing installation	22820-2
JACKSCREW- Clutch	A-23137
Includes:	
WASHER- Flat, 1/2 (1)	84035
JACKSCREW- Magneto	A-23672
Includes:	
WASHER- Flat, 1/2 (1)	84035
PLATE- Crankshaft aligning	24207-1A
PLUG- Bearing installation (conn. rod)	24397-1
PLUG- Seal assembling (crankcase)	24357-1
PLUG- Seal assembling (drivecase)	23671
PLUG- Seal installation (drivecase)	23384
PULLER- Magneto rotor	A-23960
Must be used with:	
NUT- Flexloc (2)	81109-2
REAMER- Valve seat	A-24138
SLEEVE- Bearing & shaft installation	23136-2
SLEEVE- Crankshaft assembling	23390
SPACER- Crankshaft assembling	23382
WRENCH- Combination	A-23937-B
WRENCH- Socket screw (conn. rod)	23528

DECAL

(Universal replacement) composed of "Direct Drive", "Gear Drive", "Starting Instructions", and two "Homelite" (letters 1/4" and 1/2" high)	23742-A
--	---------

PAINT

SPRAY CAN- Black	22772
SPRAY CAN- Red	23475
LOCTITE	23488-B

1971YY

HOMELITE DIVISION OF TEXTRON INC.

P.O. BOX 7047
14401 Carowinds Boulevard
Charlotte, N.C. 28217

Leon's Chainsaw Parts & Repair
Do Not Sell or Reproduce

HOMELITE **TEXTRON**

Homelite Division of Textron Inc.