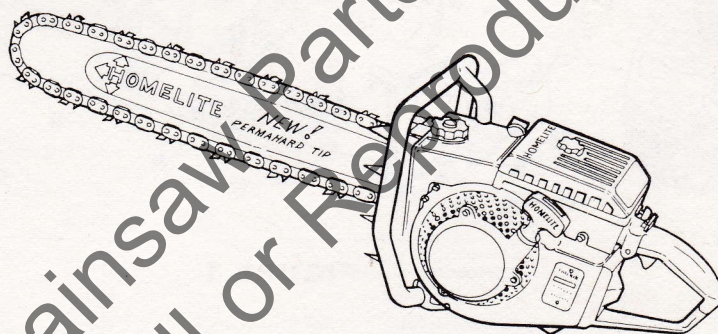


HOMELITE[®]

CHAIN SAW



SUPER

2100

AUTOMATIC

HOMELITE[®]

Textron
DIVISION

PRICE .35

PORT CHESTER, NEW YORK, U.S.A. 10573

PART NO. 2 4 6 9 0

SUPER 2100 AUTOMATIC

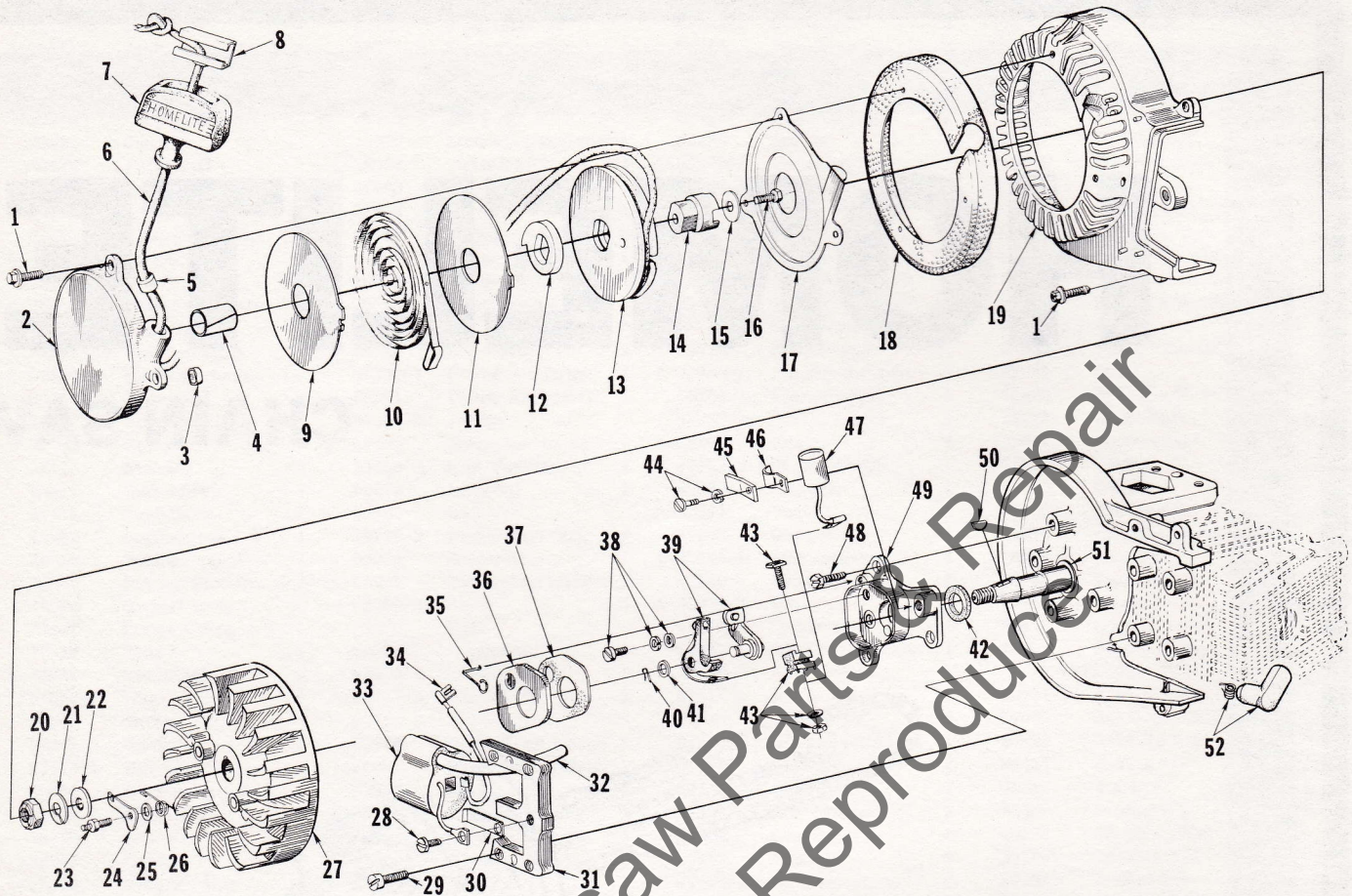


FIGURE 1

No.	Description	Part No.	Qty.	No.	Description	Part No.	Qty.
1	SCREW-hex, 12-24 x 3/4	80867	1	26	SPRING-starter pawl	65375	2
	STARTER-complete	A-64976-A	1	27	ROTOR-magneto	65480	1
	Includes:			28	SCREW-ground lead	64090	1
2	COVER-starter	A-64178-3A	1	29	SCREW-coil core	64021	4
	Includes:			30	SPRING-coil wedge	63726	1
3	BUSHING-rewind	65830	1	31	CORE-coil	67515	1
4	BUSHING-starter post	64443-1	1	32	LEAD-hi-tension	67514	1
5	BUSHING-rope	67177	1	33	COIL	67516	1
6	ROPE-starter	58806	1	34	LEAD-ground	A-59031	1
7	GRIP-starter rope	55937	1	35	SPRING-cover	76413	1
8	INSERT-rope retaining	58517	1	36	COVER-breaker box	65370-A	1
9	SHIELD-spring (inner)	65711	1	37	GASKET-cover	65369	1
10	SPRING-rewind	64180-A	1	38	SCREW GROUP-points	76421	1
11	SHIELD-spring (outer)	65712	1	39	POINTS-breaker	A-67513	1
12	LOCK-spring	64049-A	1		Includes:		
13	PULLEY-starter	64050-1	1	40	SPRING-lock	28008	1
14	CUP-starter	64979-1	1	41	WASHER-point	28028	1
15	WASHER-flat	58763	1	42	FELT-sealing	65371	1
16	SCREW-hex spinlock	80648	1	43	TERMINAL BLOCK GROUP	A-58934	1
17	SHIELD-sawdust	64052	1	44	SCREW GROUP-condenser	30261	1
18	SCREEN-fan housing	64843-2	1	45	CLIP-cover	67449	1
19	HOUSING-fan	A-64975-1	1	46	CLAMP-condenser	74514	1
20	NUT-rotor	65373-1	1	47	CONDENSER	63626	1
21	WASHER-lock, 7/16	83019	1	48	SCREW-hex, 12-24 x 9/16	80899	3
22	WASHER-flat, 7/16	84047	1	49	BOX-breaker	67512	1
23	STUD-shoulder	58757-B	2	50	KEY-Woodruff	75078	1
24	PAWL-starter	58756	2	51	WASHER-retaining	65372	1
25	WASHER-flat	83056	2	52	TERMINAL-spark plug	A-33055	1

SUPER 2100 AUTOMATIC

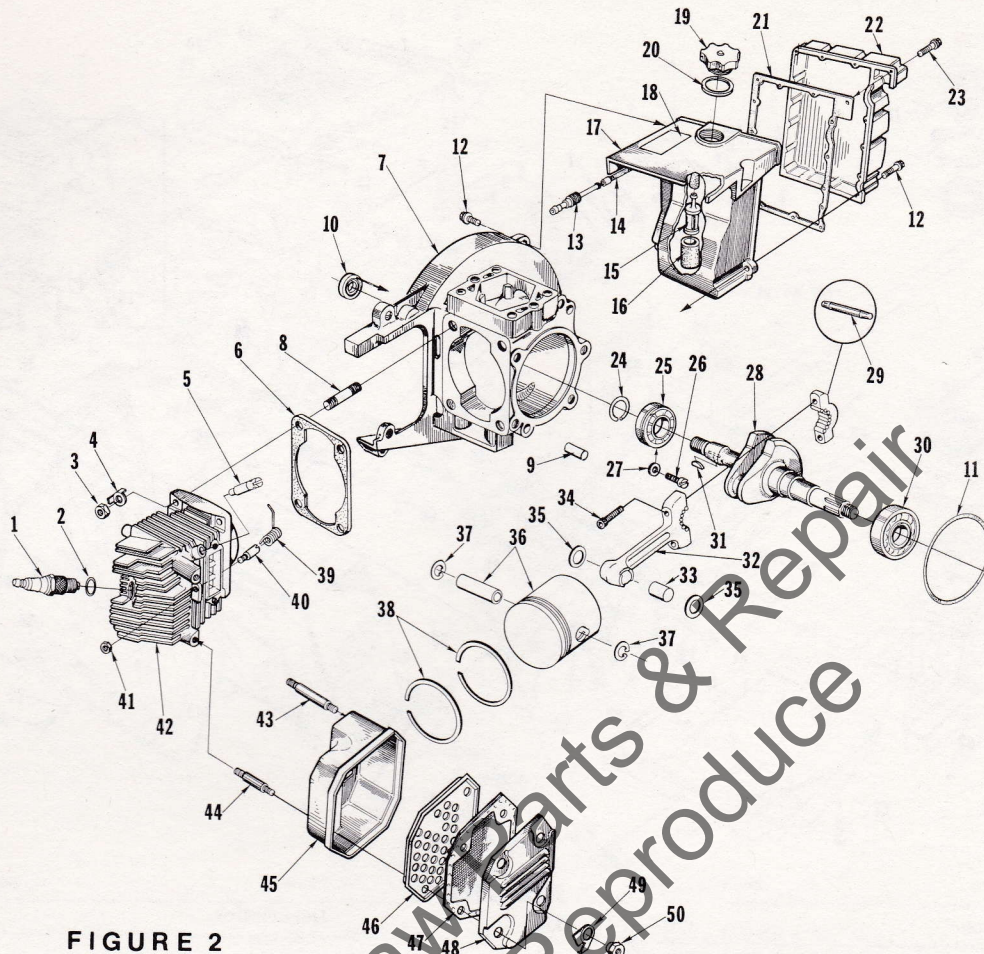


FIGURE 2

No.	Description	Part No.	Qty.	No.	Description	Part No.	Qty.
1	SPARK PLUG	68713-S	1	32	ROD-connecting	A-67715	1
2	Includes: GASKET	25038	1		Includes:		
3	NUT-hex, 5/16-24	25112	4	33	BEARING-needle	55664	1
4	WASHER-tab lock	65367-1	4	34	SCREW-soc. cap, 10-32 x 3/4	82157	2
5	VALVE-compression release	A-67465	1	35	WASHER-thrust	67673	2
6	GASKET-cylinder	67022	1	*36	PISTON & PIN	A-69241	1
7	CRANKCASE	A-67468-B	1		Includes:		
	Includes:			37	RING-piston pin retaining	64969	2
8	STUD-cylinder	72787	4	*38	PISTON RING	69193	2
9	PIN-dowel	74332	2	39	SPRING-release valve	65454	1
10	SEAL	58308-A	1	40	POST-spring	65453	1
11	"O" RING	68072	1	41	NUT-flexlock, #6-32	81126	1
12	SCREW-hex, 12-24 x 3/4	80867	4	42	CYLINDER	A-67744-3A	1
13	FITTING-fuel outlet	58364	1	43	STUD-muffler (long)	65419	2
14	LINE-flexible	55805	1	44	STUD-muffler (short)	64429-2	2
15	FILTER-fuel	A-59251	1	45	BODY-muffler	A-65458-1A	1
16	Includes: FILTER-felt	59253-1	1	46	BAFFLE-muffler	65459-A	1
17	TANK-fuel	58172-4	1	47	ARRESTER-spark	A-65583	1
18	DECAL-caution	64144	1	48	CAP-muffler	A-67014-1	1
19	CAP-fuel tank	A-64140-1	1	49	WASHER-tab lock	65579-1	4
	Includes:			50	NUT-hex, 1/4-20	65806	4
20	GASKET	65358	1		KIT-muffler cap & shield (quiet type)	A-67689	1
	VALVE-vent (not shown)	63718	1		Includes:		
21	GASKET-fuel tank	58367	1		CAP-muffler	A-67014-1	1
22	COVER-fuel tank	59920-2	1		NUT-muffler	65806	4
23	SCREW-rd., #6 x 1/2	80513	15		SHIELD-muffler	65807-2	1
24	RING-retaining	58319-A	1		SCREW-hex hd., 12-24 x 1-11/16	58963	2
25	BEARING-ball	58190-S	1		SCREW-pan hd., 10-32 x 3/8	80579	2
26	SCREW-bearing retaining	19238-3	2		WASHER-flat, #10	84003-1	2
27	WASHER-lock	83061	2				
*28	CRANKSHAFT	A-69197	1		Accessory		
29	ROLLER-needle (set of 26)	A-69058	1		KIT-heat exchanger (not shown)	A-67608	1
30	BEARING-ball	64958-S	1		Includes:		
31	KEY-Woodruff	75078	1		SCREW-pan hd., 10-32 x 7/16	80578	2

* Denotes new parts

SUPER 2100 AUTOMATIC

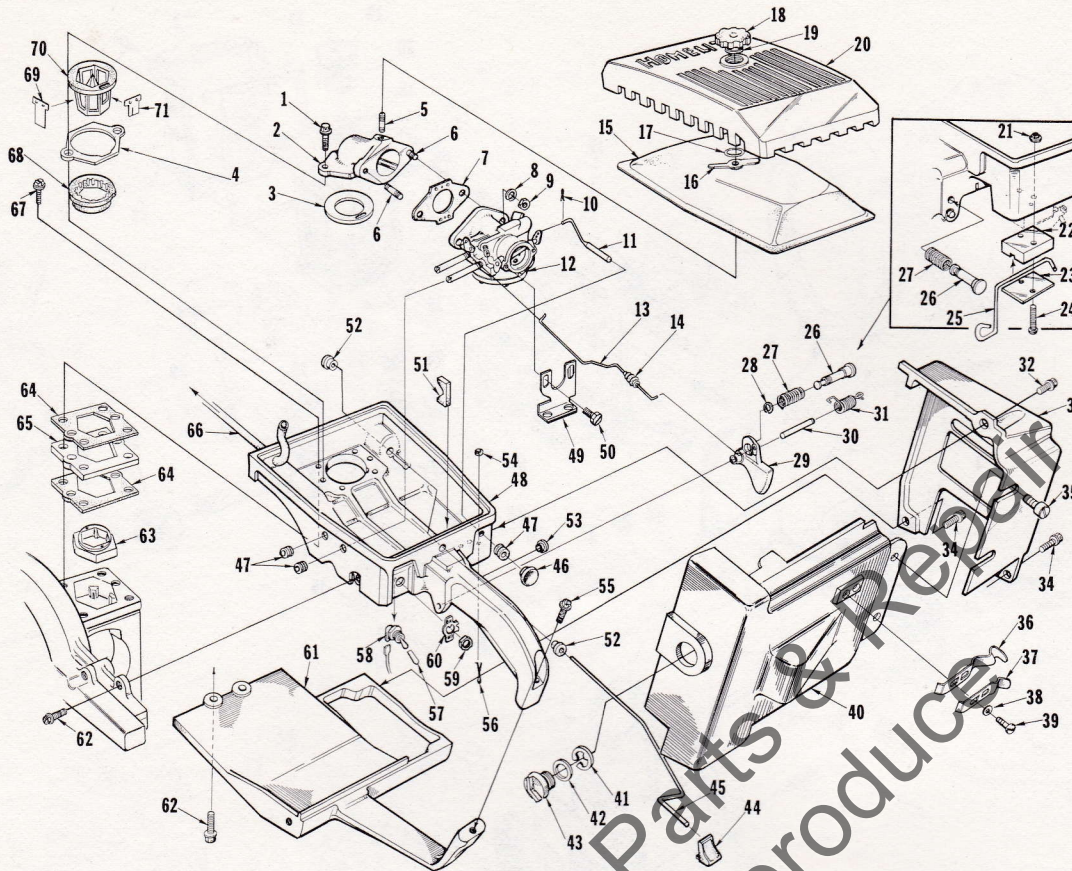


FIGURE 3

No.	Description	Part No.	Qty.	No.	Description	Part No.	Qty.
1	SCREW-hex, 12-24 x 1-1/4	80994	2	37	CLAMP-lower	65755-1	1
2	MANIFOLD-intake	A-65945-B	1	38	WASHER-flat, #10	84003-1	2
	Includes:			39	SCREW-pan, 6-32 x 1/4	82159	2
3	GASKET-manifold	67121	1	40	SHIELD-cylinder	A-68121	1
4	GASKET-reed retainer	65903	1		Includes:		
5	STUD-cover mounting	58361	1	41	RING-retaining	68095	1
6	STUD-carburetor mounting	27464	2	42	"O" RING	68891	1
7	GASKET-carburetor	63655-A	1	43	SCREW-cylinder shield mounting	68096	1
8	WASHER-lock, 1/4	83009	2	44	BUTTON-oil pump rod	58357	1
9	NUT-hex, 1/4-20	81013-1	2	45	ROD-oil pump	58356-B	1
10	PIN-cotter	86324	1	46	BUTTON-choke	57289-1	1
11	ROD-choke	A-58334	1	47	GROMMET	58362	3
12	CARBURETOR (HL-273A)	A-67130	1	48	HANDLE-throttle	A-65750-A	1
13	ROD-throttle	58338-A	1		Includes:		
14	BOOT-throttle rod	58348	1	49	BRACKET-carburetor	67208-1	1
*15	FILTER ELEMENT-air	A-69306	1	50	SCREW-hex, 10-32 x 5/16	82175	4
16	Includes: GROMMET-rubber	63878	1	51	STOP-pump rod	58930	1
17	RING-retaining	58319-A	1	52	BUSHING-oil pump rod	58929	2
18	NUT-cover mounting	A-59229	1	53	BUSHING-throttle latch	59064	1
*19	"O" RING	69052	1	54	WASHER-felt	63290	1
20	COVER-air filter	59230-1	1	55	SCREW-hex, 1/4-20 x 1-1/4	80912	1
21	NUT-flexlock, 6-32	81126	2	56	PIN-cotter	86301	1
22	GUIDE-lever	65463-1	1	57	SLEEVE-grounding switch	69092	1
23	PLATE-lever guide	64985-1	1	58	SWITCH-toggle	A-57650-3	1
24	SCREW-fil, 6-32 x 5/8	80461	2	59	Includes: NUT	72084-A1	1
25	LEVER-compression release	64984-A	1	60	PLATE-indicating	72085-A	1
26	PIN-throttle latch	58404	1	61	BRACE-throttle handle	64837-4	1
27	SPRING-latch pin	58405	1	62	SCREW-hex, 12-24 x 3/4	80867	3
28	RING-retaining	58409	1	63	BLOCK-filler	67117	1
29	TRIGGER-throttle	58181-A	1	64	GASKET-carburetor chamber	64841	2
30	SHAFT-trigger	58353	1	65	SPACER	64840	1
31	SPRING-trigger	58352-A	1	66	LINE-fuel	55680	1
32	SCREW-hex, 12-24 x 5/8	80676	1	67	SCREW-hex, 12-24 x 1	80864	4
33	SHIELD-muffler	65807-2	1	68	RETAINER-reed	64834	1
34	SCREW-hex, 12-24 x 1-11/16	58963	2	69	REED	63166-A	5
35	SCREW-hex, 10-32 x 3/8	80579	2	70	SEAT-reed valve	64833-1	1
36	CLAMP-upper	65754-1	1	71	REED-split	67107-A	1

* Denotes new parts

SUPER 2100 AUTOMATIC

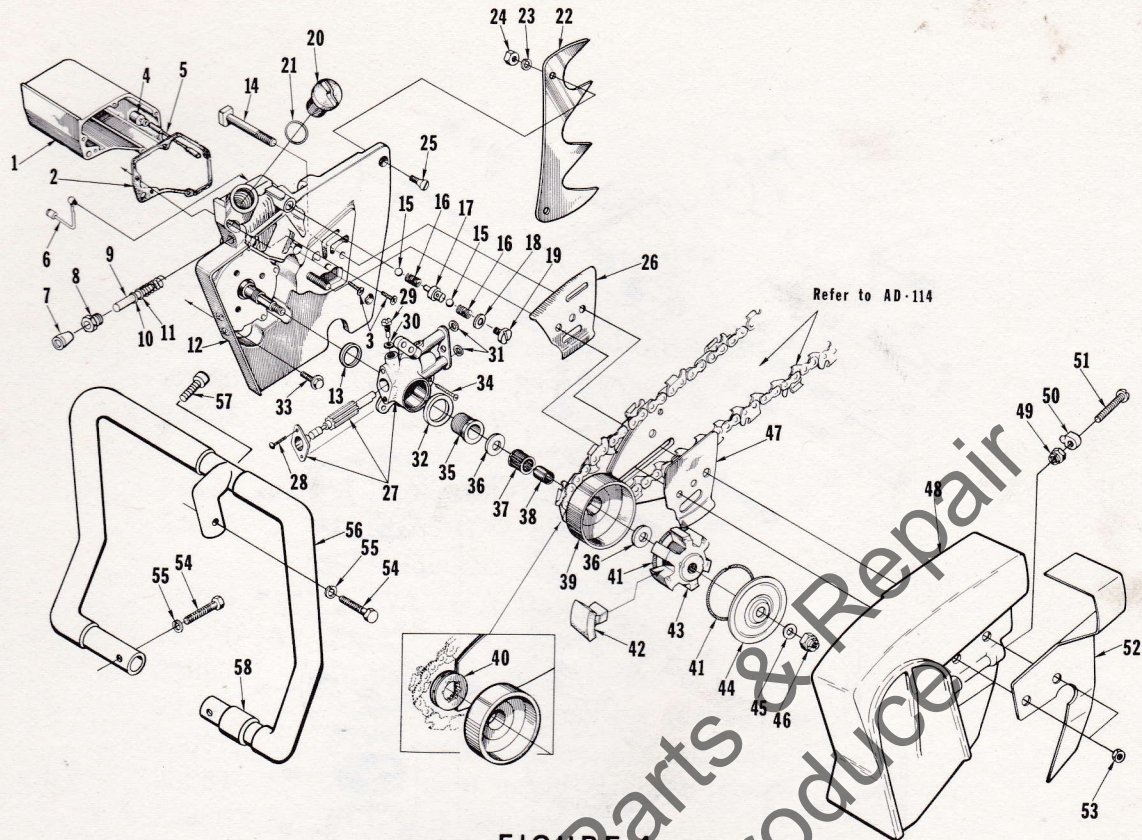


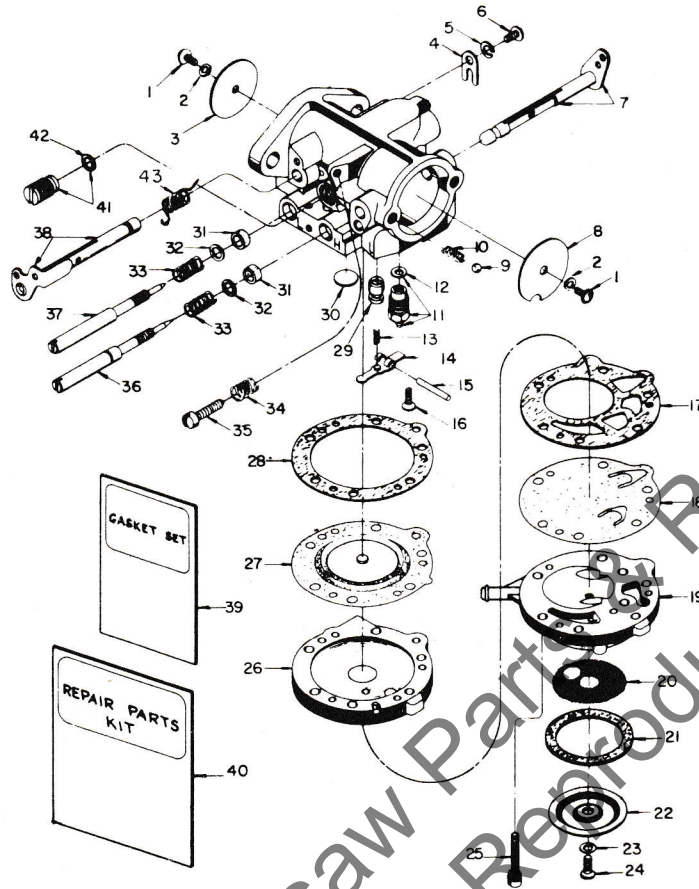
FIGURE 4

No.	Description	Part No.	Qty.	No.	Description	Part No.	Qty.
1	RESERVOIR-oil	A-58341-A	1	33	SCREW-hex, 1/4-20 x 13/16	82201	5
2	Includes: GASKET-oil reservoir	67122	1	34	SCREW-pan, 8-32 x 1/2	80560	3
3	SCREW-fil, 8-32 x 3/4	82150	5	35	WORM-oil pump	63893	1
	PIN-cotter (not shown)	86301	1	36	WASHER-thrust	56132	2
4	FILTER-oil	A-64293	1	37	BEARING-needle caged	65393	1
5	LINE-oil pickup	59674	1	38	RACE-inner	65348	1
6	LINE-oil pickup	A-641010	1	*39	DRUM & HUB (six splined)	A-69203	1
7	CONNECTOR-pump rod	67118	1		DRUM & HUB (7 splined) Note 1	A-68727	1
8	NUT-plunger rod	67128	1		Includes:		
9	PUMP- manual	A-68061-A	1		BUSHING-clutch	68422-1	1
10	Includes: "O" RING	59074	1	40	SPROCKET-splined		
11	"O" RING	58406	1		.404 pitch, 8 tooth	65960	1
12	DRIVECASE	A-68100	1		1/2 pitch, 6 tooth (optional)	67017	1
	Includes:			*41	SPRING-clutch	68392	2
	TUBE-oil (not shown)	59023	1	*42	SHOE-clutch	55076-9	6
13	SEAL	56256-A	1	*43	SPIDER-clutch	67591-3	1
14	BOLT-guide bar	58334	2	44	COVER-clutch	56238-A	1
15	BALL-steel	25527	2	45	WASHER-flat	64027	1
16	SPRING-check valve	59022	2	46	NUT-hex, 3/8-24	81192	1
17	SEAT-valve	A-67959	1	47	PLATE-guide bar (outer)	67670	1
	Includes: "O" RING (not shown)	58406	1	48	COVER-drivecase	67213-2	1
18	GASKET-valve cap	67123	1	49	NUT-hex lock, 5/16-18	81123	1
19	CAP-check valve	67958	1	50	PIN-adjusting	55613-1	1
20	CAP-oil filler (vented)	A-63717-A	1	51	SCREW-rd. hd. 5/16-18 x 2-1/8	82219	1
	Includes: VALVE-vent (not shown)	63718	1	52	PLATE-guard	67399-1	1
21	GASKET	56607	1	53	NUT-hex, 3/8-16	81089-2	2
22	KIT-spiked bumper	A-63089	1	54	SCREW-hex, 5/16-18 x 1-1/2	80087	3
	KIT-spiked bumper	A-58543	1	55	WASHER-lock, 5/16	83003	3
23	Includes: WASHER-lock, 1/4	83009	2	56	HANDLE BAR-wrap around	A-69208-1	1
24	NUT-hex, 1/4-20	81053	2	*	HANDLE BAR-flush cut (optional)	A-69233-1	1
25	SCREW-flat, 1/4-20 x 3/4	80053	2		Includes:		
26	PLATE-guide bar (inner)	67669	1	57	SCREW-soc, 5/16-18 x 1	80308	1
27	PUMP-automatic oil (long stroke)	A-67579	1	*58	BUSHING-handle bar	69317	1
	PUMP-automatic oil (short stroke)	A-64073-A	1				
28	Includes: SCREW-pan, 4-40 x 1/4	80919	2				
29	SCREW-cam	64102-A	1				
30	GASKET-cam screw	59736	1				
31	"O" RING	59074	2				
32	SEAL-felt	59926	1				

Note 1: A-68727 Drum & Hub must be used with Bushing 68422-1

* Denotes new parts

SUPER 2100 AUTOMATIC



A-67130 HL 273A

No.	Description	Part No.	Qty.	No.	Description	Part No.	Qty.
1	SCREW-rd., 4-40 x 1/4	† 80591	2	23	GASKET-strainer cover screw	28098	1
2	WASHER-lock	† 83008-1	2	24	SCREW-pump cover	† 58525	1
3	SHUTTER-throttle	67478	1	25	SCREW-body w/lockwasher	55316	6
4	CLIP-throttle shaft	73086	1	26	COVER-main diaphragm	A-58533	1
5	WASHER-lock, #8	83000	1	27	DIAPHRAGM-main control	† 57829	1
6	SCREW-flat hd., 8-32 x 5/16	73088	1	28	GASKET-cover diaphragm	57824	1
7	SHAFT & LEVER-choke	A-64627	1	29	NOZZLE-main	A-67479	1
8	SHUTTER-choke	64625	1	30	PLUG-expansion	† 30818	1
9	BALL-check, 5/32 diameter	25527	2	31	PACKING-adjusting screw	75733	2
10	SPRING-choke friction	73264	1	32	WASHER-adjusting screw	75735	2
11	NEEDLE & SEAT	A-64628	1	33	SPRING-adjusting needle	† 73075	2
12	GASKET-inlet seat	55344	1	34	SPRING-throttle stop	† 28064	1
13	SPRING-control lever	† 65603	1	35	SCREW-idle stop	† 71509	1
14	LEVER-inlet control	† 55747	1	36	NEEDLE-adjusting (main mixture)	67477	1
15	PIN-fulcrum	† 64622	1	37	VALVE-needle (idle mixture)	58680	1
16	SCREW-fulcrum pin retaining	† 58992	1	38	SHAFT & LEVER-throttle	A-67480	1
17	GASKET-pump diaphragm	58529	1	39	GASKET & PACKING SET	† 68657	1
18	DIAPHRAGM-fuel pump	† 57729	1	40	REPAIR PARTS KIT	68663	1
19	BODY-fuel pump	59265	1	41	VALVE-governor	A-65891	1
20	SCREEN-fuel inlet	† 58527	1	42	GASKET	74060	1
21	GASKET-pump strainer	55751	1	43	SPRING-throttle return	† 64624	1
22	COVER-strainer	58526	1		GASKET & DIAPHRAGM	63590	1

† Indicates contents of Repair Parts Kit

SUPER 2100 AUTOMATIC

Tools

23373-4 COLLAR-bearing installation
22820-2 COLLAR-main bearing installation
A-23137 JACKSCREW-clutch
Includes:
84035 WASHER-flat, 1/2 1
A-23672 JACKSCREW-magneto
Includes:
84035 WASHER-flat, 1/2 1
24207-1A PLATE-crankshaft aligning
24397-1 PLUG-bearing installation (conn. rod)
24357-1 PLUG-seal assembling (crankcase)
23671 PLUG-seal assembling (drivecase)
23384 PLUG-seal installation (drivecase)
A-23960 PULLER-magneto rotor
Must be used with:
81109-2 NUT-flexloc 2
A-24138 REAMER-valve seat
23136-2 SLEEVE-bearing & shaft installation
23390 SLEEVE-crankshaft assembling
23382 SPACER-crankshaft assembling
A-24284 WRENCH-combination
23528 WRENCH-socket screw (conn. rod)

Decal

23742 (Universal replacement) composed of "Direct Drive",
"Gear Drive", "Starting Instructions", and two
"Homelite" (letters 1/4" and 1/2" high)

Paint

22772 SPRAY CAN-black
23475 SPRAY CAN-red

23488-B LOCTITE

Part No.	Description	Qty.	Part No.	Description	Qty.	Part No.	Description	Qty.	Part No.	Description	Qty.
19238-3	Screw-bearing	2	A-58533	Cover-diaphragm	1	65370-A	Cover-bkr. box	1	68663	Kit-repair parts	1
22772	Paint-black	1	A-58543	Kit-spiked bumper	1	65371	Felt-sealing	1	68713-S	Spark Plug	1
22820-2	Collar-bearing	1	58680	Needle-idle adj.	1	65372	Washer-retaining	1	A-68727	Drum & Hub	1
23136-2	Sleeve	1	58756	Pawl-starter	2	65373-1	Nut-rotor	1	68891	"O" Ring	1
A-23137	Jackscrew-clutch	1	58757-B	Stud-shoulder	2	65375	Spring-pawl	2	*69052	"O" Ring	1
23373-4	Collar	1	58763	Washer-retaining	1	65393	Bearing-needle	1	A-69058	Roller-needle	1
23382	Spacer-c/shaft	1	58806	Rope-starter	1	65419	Stud-muffler	2	69092	Sleeve	1
23384	Plug-seal inst.	1	58929	Bushing	2	65453	Post-spring	1	*69193	Piston Ring	2
23390	Sleeve	1	58930	Stop-oil pump rod	1	65454	Spring	1	*A-69197	Crankshaft	1
23475	Paint-red	1	A-58934	Terminal Block	1	A-65458-1A	Body-muffler	1	*A-69203	Drum & Hub	1
23488-B	Loctite	1	58963	Screw	2	65459-A	Baffle-muffler	1	A-69208-1	Handle Bar	1
23528	Wrench	1	58992	Screw	1	65463-1	Guide-lever	1	*A-69233-1	Handle Bar	1
23671	Plug-drivecase	1	59022	Spring-check valve	2	65480	Rotor-magneto	1	*A-69241	Piston & Pin	1
A-23672	Jackscrew	1	59023	Tube-oil line	1	65579-1	Washer-tab lock	4	*A-69306	Filter Element	1
23742	Decal	1	A-59031	Lead-ground	1	A-65583	Arrester-spark	1	*69317	Bushing-handle bar	1
A-23960	Puller-magneto	1	59064	Bushing-rod	2	65603	Spring Tension	1	71509	Screw-idle stop	1
A-24138	Reamer	1	59074	"O" Ring	2	65711	Shield-inner	1	72084-A1	Nut	1
24207-1A	Plate-c/shaft	1	A-59229	Nut-cover	1	65712	Shield-outer	1	72085-A	Plate-"On-Off"	1
A-24284	Wrench-comb.	1	59230-1	Cover-air filter	1	A-65750-A	Handle-throttle	1	72787	Stud	1
24357-1	Plug-seal	1	A-59251	Filter Assembly	1	65754-1	Clamp-upper	1	73075	Spring-adj.needle	2
24397-1	Plug-bearing	1	59253-1	Filter	1	65755-1	Clamp-lower	1	73086	Clip-shaft	1
25038	Gasket	1	59265	Body-fuel pump	1	65806	Nut	4	73088	Screw-flat	1
25412	Nut-hex	4	59338-A	Rod-throttle	1	65807-2	Shield-muffler	1	73264	Spring	1
25527	Ball-check	4	59674	Line-oil	1	65830	Bushing	1	74060	Gasket	1
27464	Stud-carb.	2	59736	Gasket	1	A-65891	Valve	1	74832	Pin-dowel	2
28008	Spring-lock	1	59920-2	Cover-fuel tank	1	65903	Gasket	1	74514	Clamp-condenser	1
28028	Washer-point	1	59926	Seal-felt	1	A-65945-B	Manifold-intake	1	75078	Key-rotor	1
28064	Spring-throttle	1	A-63089	Kit-spiked bumper	1	65960	Sprocket	1	75733	Packing	2
28098	Gasket-cover	1	63166-A	Reed	5	A-67014-1	Cap	1	75735	Washer	2
30261	Screw Group	1	63290	Felt	1	67017	Sprocket	1	76413	Spring-cover	1
30818	Plug	1	63626	Condenser	1	67022	Gasket-cylinder	1	76421	Screw Group	1
A-33055	Terminal	1	63655-A	Gasket-carb.	1	67107-A	Reed-split	1	FASTENING PARTS		
*55076-9	Shoe	6	A-63717-A	Cap-oil filler	2	67117	Block-filler	1	80053	1/4-20 x 3/4	2
55316	Screw	6	63718	Valve-check	2	67118	Connector	1	80087	5/16-18 x 1-1/2	3
55344	Gasket	1	63726	Spring-coil wedge	1	67121	Gasket-manifold	1	80308	5/16-18 x 1	1
55613-1	Pin-guide bar	1	63878	Grommet-rubber	1	67122	Gasket	1	80461	6-32 x 5/8	2
55664	Bearing-needle	1	63893	Worm-gear	1	67123	Gasket	1	80513	6 x 1/2	15
55680	Line-fuel	1	A-64010	Line-oil pickup	1	67128	Nut-plunger	1	80560	8-32 x 1/2	3
55747	Lever	1	64021	Screw-coil core	4	A-67130	Cam-burton	1	80578	10-32 x 7/16	2
55751	Gasket	1	64027	Washer-flat	1	67177	Bushing	1	80579	10-32 x 3/8	2
55805	Flexible line	1	64049-A	Lock	1	67208-1	Bracket-carb.	1	80591	4-40 x 1/4	2
55937	Grip-ropo	1	64050-1	Pulley-starter	1	67213-2	Cover-d/case	1	80648	10-32 x 1/2	1
56132	Washer-outer	2	64052	Shield-saw dust	1	67389-1	Plate-guard	1	80676	12-24 x 5/8	3
56238-A	Cover-clutch	1	A-64073-A	Pump-oiler	1	67449	Clip-cover	1	80864	12-24 x 1	4
56256-A	Seal	2	64090	Screw	1	A-67465	Valve-comp.	1	80867	12-24 x 3/4	14
56607	Gasket	1	64102-A	Screw-cam	1	A-67468-B	Crankcase	1	80899	12-24 x 9/16	3
57289-1	Button-rod	1	A-64140-1	Cap-tank	1	67477	Needle	1	80912	1/4-20 x 1-1/4	1
A-57650-3	Switch-toggle	1	64144	Decal-caution	1	67478	Shutter	1	80919	4-40 x 1/4	2
57729	Diaphragm	1	A-64178-3A	Cover-starter	1	A-67479	Nozzle	1	80994	12-24 x 1-1/4	2
57824	Gasket-dia.	1	64180-A	Spring-rewind	1	A-67480	Shaft & Lever	1	81013-1	Nut-1/4-20	2
57829	Diaphragm	1	A-64293	Filter-oil	1	67512	Box-breaker	1	81053	Nut-1/4-20	2
58172-4	Tank-fuel	1	64292-2	Stud-muffler	2	A-67513	Points-breaker	1	81089-2	Nut-3/8-16	2
58181-A	Trigger-throttle	1	64443-1	Bushing-post	1	67514	Lead-hi-tension	1	81109-2	Nut-flexloc	2
58190-S	Bearing-ball	1	64622	Pin-filerum	1	67515	Core-coil	1	81123	Nut-5/16-18	1
58308-A	Seal-shaft	1	64624	Spring	1	67516	Coil	1	81126	Nut-6-32	3
58319-A	Ring-retaining	4	64625	Shutter-choke	1	A-67579	Pump	1	81192	Nut-3/8-24	1
58334	Bolt-guide bar	2	A-64627	Shaft & Lever	1	*67591-3	Spider	1	82156	8-32 x 3/4	5
58352-A	Spring-throttle	1	A-64628	Needle & Seat	1	A-67608	Kit-exchanger	1	82157	10-32 x 3/4	2
58353	Shaft-trigger	1	64833-1	Seat-reed valve	1	67669	Plate-guide bar	1	82159	6-32 x 1/4	2
A-58354	Rod-choke	1	64834	Retainer-reed	1	67670	Plate-guide bar	1	82175	10-32 x 5/16	4
58356-B	Rod-oil pump	1	64837-4	Brace	1	67673	Washer-thrust	2	82201	1/4-20 x 13/16	5
58357	Button-oil rod	1	64840	Spacer	1	A-67689	Muffler Kit	1	82219	5/16-18 x 2-1/8	1
58361	Stud-cover	1	64841	Gasket	2	A-67715	Rod-connecting	1	83000	Washer- #8	1
58362	Grommet	3	64843-2	Screen	1	A-67744-3A	Cylinder	1	83003	Washer-5/16	3
58364	Fitting-fuel outlet	1	64958-S	Bearing-ball	1	67958	Cap	1	83008-1	Washer-#4	2
58367	Gasket	1	64969	Ring-retaining	2	A-67959	Seat-valve	1	83009	Washer-1/4	4
58404	Pin-throttle lock	1	A-64975-1	Housing- fan	1	A-68061-A	Pump-manual	1	83019	Washer-7/16	1
58405	Spring	1	A-64976-A	Starter	1	68072	"O" Ring	1	83056	Washer-#12	2
58406	"O" Ring	2	64979-1	Cup-starter	1	68095	Ring-retaining	1	83061	Washer-lock	2
58409	Ring-retaining	1	64984-A	Lever	1	68096	Screw-mounting	1	84003-1	Washer-#10	2
58517	Insert	1	64985-1	Plate-lever guide	1	A-68100	Drivecase	1	84035	Washer	1
58525	Screw-cover	1	65348	Race-inner	1	A-68121	Shield-cylinder	1	84047	Washer-flat	1
58526	Cover-strainer	1	65358	Gasket	1	*68392	Spring-clutch	2	86301	Pin-cotter	3
58527	Screen-fuel	1	65367-1	Washer-lock	1	68422-1	Bushing-clutch	1	86324	Pin-cotter	1
58529	Gasket-fuel pump	1	65369	Gasket-cover	1	68657	Gasket Set	1	* Denotes new parts		

HOMELITE®

A **textron** DIVISION, PORT CHESTER, N.Y. 10573