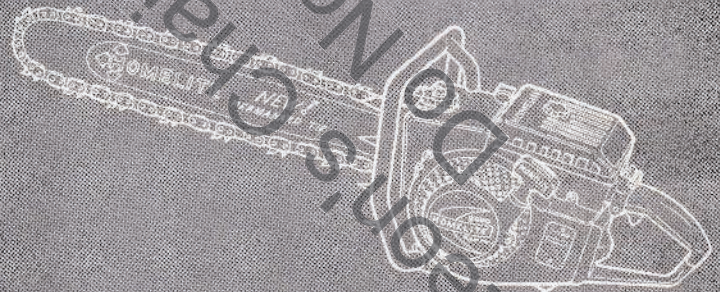


**CHAIN SAW
PARTS LIST**

SUPER 2000

HOMELITE®



Part No. 24347

SUPER 2000

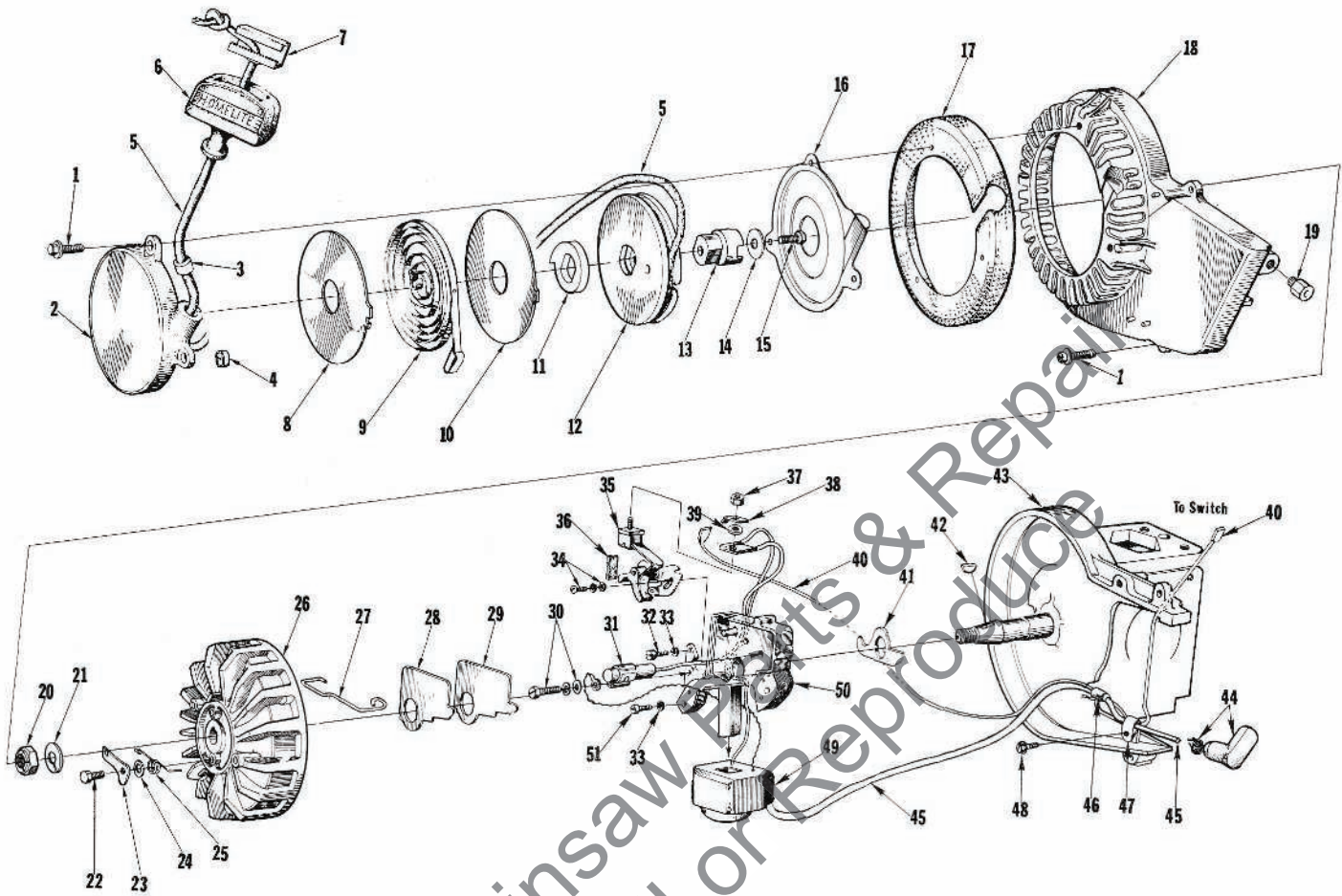


FIGURE 1

No.	Description	Part No.	Qty.	No.	Description	Part No.	Qty.
1	SCREW-hex, 12-24 x 3/4	80867	7	27	CLIP-cover	55980	1
2	COVER-starter	A-64178	1	28	COVER-breaker box	55979	1
3	Includes: BUSHING-rope	67177	1	29	GASKET-cover	55978-2	1
4	BUSHING-rewind	65830	1	30	SCREW-condenser	57750	1
5	ROPE-starter	58806	1	31	CONDENSER	55987	1
6	GRIP-rope	55937	1	32	SCREW-fil., 10-24 x 1/2	80595	1
7	INSERT-rope retaining	58517	1	33	WASHER-lock, #10	83046	3
8	SHIELD-spring (inner)	65711	1	34	SCREW-contact plate	57749	1
9	SPRING-rewind	64180-A	1	35	POINTS-breaker	A-58165	1
10	SHIELD-spring (outer)	65712	1	36	Includes: WIPER-cam	55984	1
11	LOCK-spring rewind	64049-A	1	37	NUT-terminal	55982	1
12	PULLEY-starter	64050-1	1	38	TAB-ground terminal	57733	1
13	CUP-starter	67139	1	39	WASHER-terminal	55983	1
14	WASHER-retaining	58763	1	40	LEAD-ground w/terminals	A-58321	1
15	SCREW-hex, spinlock	80648	1	41	SEAL-breaker box	56292-A	1
16	SHIELD-sawdust	64052	1	42	KEY-rotor	75078	1
17	SCREEN-fan housing	65390-1	1	43	CRANKCASE-w/pin	A-65753	1
18	HOUSING-fan	59094-5	1	44	TERMINAL-spark plug	A-55373-A	1
19	SPACER	65466	1	45	LEAD-high tension	55235-A	1
20	NUT-lock, 7/16-20	81104	1	46	SLEEVE-insulation	55290	1
21	WASHER-flat	84047	1	47	CLAMP-lead	56014	1
22	STUD-shoulder	64054	2	48	SCREW-hex, 10-32 x 3/8	80869-1	1
23	PAWL-starter	58756	2	49	COIL-ignition	55986-A	1
24	WASHER	58851	2	50	BOX-breaker	57744	1
25	SPRING-starter pawl	58758-1	2	51	SCREW-fil., 10-24 x 7/8	80660	2
26	ROTOR-magneto	64053-A	1				

SUPER 2000

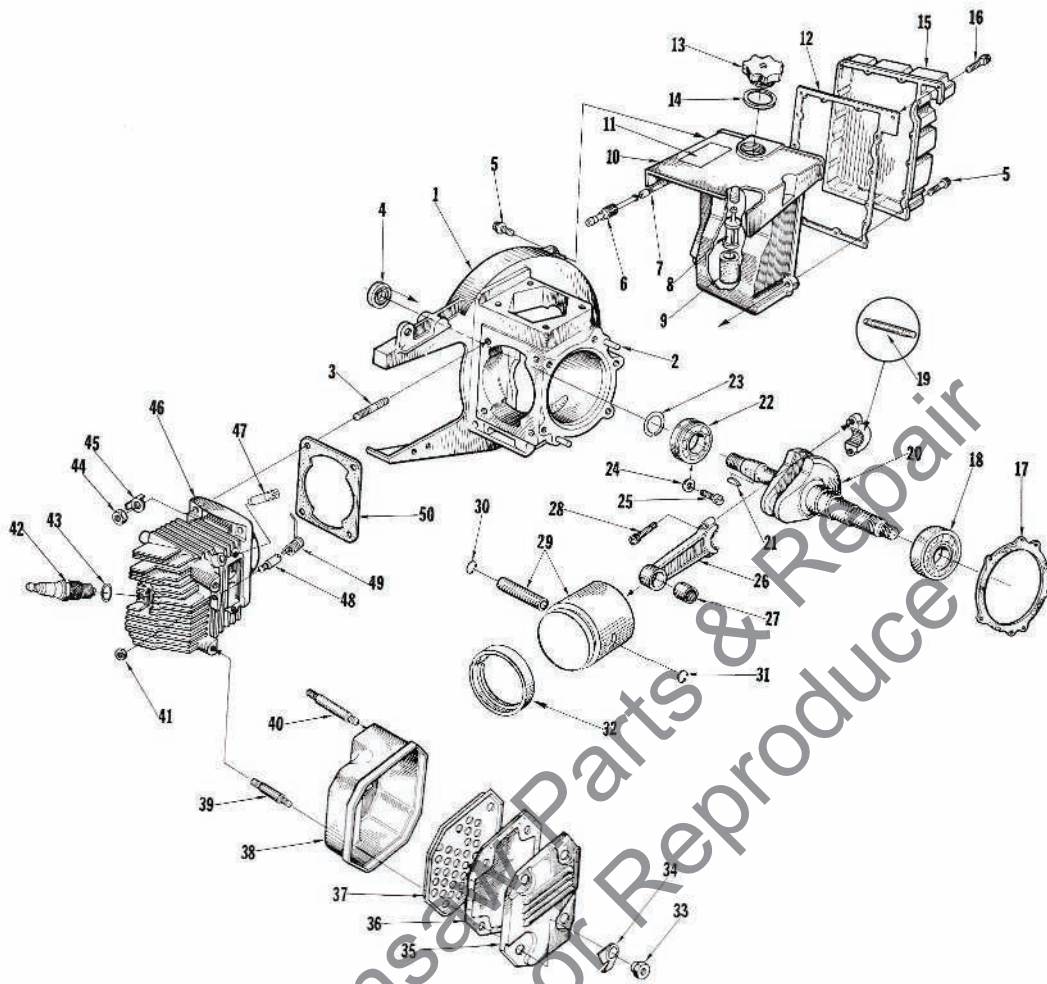


FIGURE 2

No.	Description	Part No.	Qty.	No.	Description	Part No.	Qty.
1	CRANKCASE -w/pins	A-65753	1	26	ROD-connecting	A-64964-A	1
2	Includes: PIN-dowel	74832	2	27	Includes: BEARING-needle	55664	1
3	STUD	72737-1	4	28	SCREW-socket, 10-32 x 3/4	82157	2
4	SEAL	58308-A	1	*29	PISTON & PIN	A-67469	1
5	SCREW-hex, 12-24 x 3/4	80867	4	*30	Includes: RING-piston pin retaining	64969	1
6	FITTING-fuel outlet	58364	1	31	RING-retaining	31074	1
7	SLEEVE-flexible	55805	1	*32	PISTON RING	67129	1
8	FILTER-fuel	A-59251	1	33	NUT-hex, 1/4-20	65549	4
9	Includes: FILTER-felt	59253-1	1	34	WASHER-tab lock	65579-1	4
*10	TANK-fuel	58172-4	1	35	CAP-muffler	65460-1	1
11	DECAL-caution	64144	1	36	ARRESTER-spark	A-65583	1
12	GASKET-fuel tank cover	58367	1	37	BAFFLE-muffler	65459	1
13	CAP-tank	A-64140-1	1	38	BODY-muffler	A-65458-1	1
14	Includes: GASKET	65358	1	39	STUD-muffler	64429	2
15	COVER-tank	59920-2	1	40	STUD-muffler	65419	2
16	SCREW-rd., 6 x 1/2	80513	15	41	NUT-flexlock, 6-32	81126	1
17	GASKET-crankcase	63356	1	42	SPARK PLUG	65444-S	1
18	BEARING-ball	64958-S	1	43	Includes: GASKET	25038	1
19	BEARING-needle (set of 26)	A-64960	1	44	NUT-hex, 5/16-24	25412	4
20	CRANKSHAFT	A-65446	1	45	WASHER-tab lock, 1/4	65367-1	4
21	KEY-rotor	75078	1	*46	CYLINDER	A-64158-1C	1
22	BEARING-ball	58190-S	1	*47	VALVE-compression release	A-67465	1
23	RING-retaining	58319-A	1	48	POST-spring	65453	1
24	WASHER-lock	83061	2	49	SPRING-relief valve	65454	1
25	SCREW-bearing retaining	19238-3	2	50	GASKET-cylinder (.015)	67022	1

* Denotes new parts.

SUPER 2000

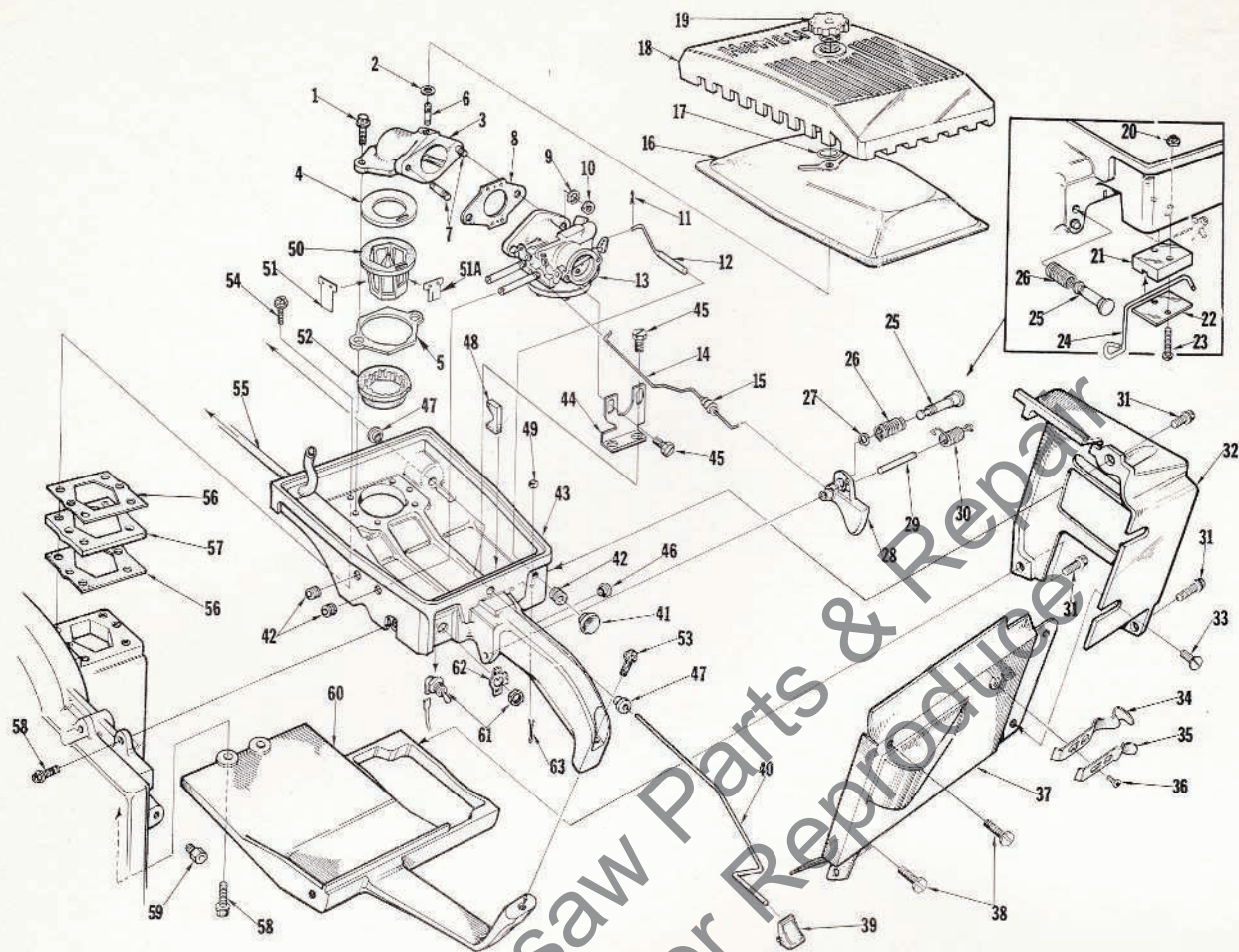


FIGURE 3

No.	Description	Part No.	Qty.	No.	Description	Part No.	Qty.
1	SCREW-hex, 12-24 x 1 1/4	80994	2	*33	SCREW-pan, 10-32 x 5/16	82175	2
2	GASKET-mounting nut	58392	1	34	CLAMP-lower lever	65755-1	1
*3	MANIFOLD-intake	A-6594	1	35	CLAMP-upper lever	65754-1	1
	Includes: GASKET-manifold	67121	1	36	SCREW-phillips pan, 6-32 x 1/4	82159	2
4	GASKET-retainer	65943	1	37	SHIELD-cylinder	A-65465-1	1
5	GASKET-retainer	65943	1	38	SCREW-pan, 10-32 x 3/8	80579	2
6	STUD-cover	58361	1	39	BUTTON-oil pump	58357	1
7	STUD-carburetor	27462	2	40	ROD-oil pump	58356-B	1
*8	GASKET-carburetor	53655-A	1	41	BUTTON-choke rod	57289-1	1
9	WASHER-lock, 1/4	83009	2	42	GROMMET	58362	3
10	NUT-hex, 1/4-20	81013-1	2	*43	HANDLE-throttle	A-65750-A	1
11	PIN-cotter	86324	1	*44	Includes: BRACKET-carburetor	67208-1	1
12	ROD-choke	A-58354	1	*45	SCREW-pan, 10-32 x 5/16	82175	4
*13	CARBURETOR	A-67130	1	46	BUSHING-throttle lock	59064	1
14	ROD-throttle	59338	1	47	BUSHING-oil pump rod	58929	2
15	BOOT-throttle rod	58348	1	48	STOP-pump rod	58930	1
16	FILTER ELEMENT-air	63728	1	49	FELT-washer	63290	1
17	RING-retaining	58319-A	1	*50	SEAT-reed valve	64833-1	1
18	COVER-air filter	59230-1	1	51	REED-valve	63166	5
19	NUT-cover mounting	A-59229	1	*51A	REED-valve	67107	1
20	NUT-flexlock, 6-32	81126	2	52	RETAINER-reed	64834	1
21	GUIDE-lever	65463-1	1	53	SCREW-hex hd., 1/4-20 x 1 1/4	80912	1
22	PLATE-lever guide	64985-1	1	54	SCREW-hex, 12-24 x 1	80864	4
23	SCREW-pan, 6-32 x 5/8	80461-1	2	55	LINE-fuel	55680	1
24	LEVER-compression relief	64984-A	1	56	GASKET-carburetor spacer	64841	2
25	PIN-throttle lock	58404	1	57	SPACER-carburetor	64840	1
26	SPRING-throttle lock	58405	1	58	SCREW-hex, 12-24 x 3/4	80867	3
27	RING-retaining	58409	1	59	SPACER	65466	1
28	TRIGGER-throttle	58181-A	1	60	BRACE-throttle handle	64837-2A	1
29	SHAFT-throttle	58353	1	61	SWITCH-toggle w/nut	A-57650-3	1
30	SPRING-throttle trigger	58352-A	1	62	PLATE-indicating	72085-A	1
31	SCREW-hex, 12-24 x 5/8	80676	3	63	PIN-cotter	86301	1
32	SHIELD-muffer ①	64836-2	1				

* Denotes new parts.

①*A-67608 Kit, Heat Exchanger available at your Homelite dealer.

SUPER 2000

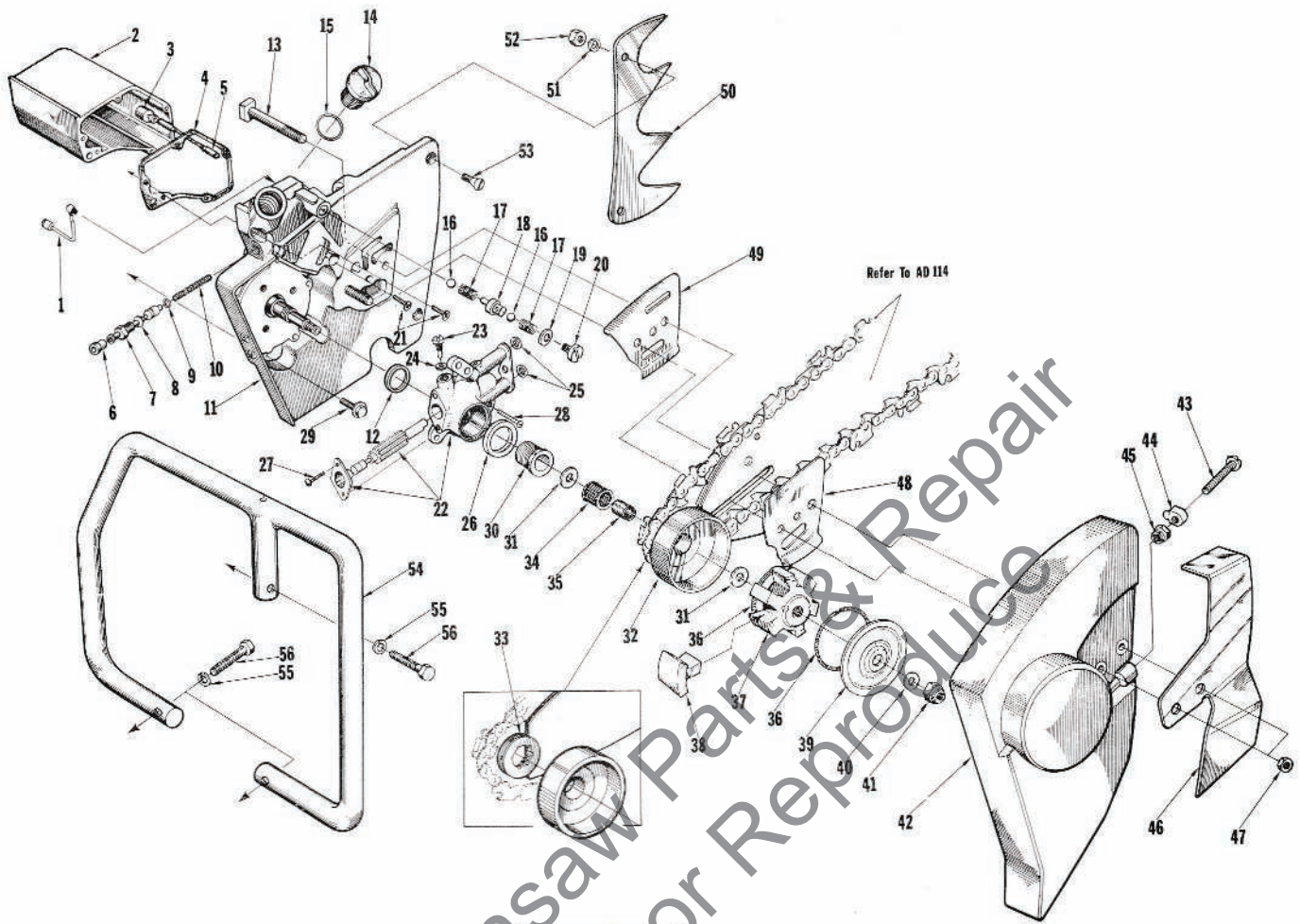


FIGURE 4

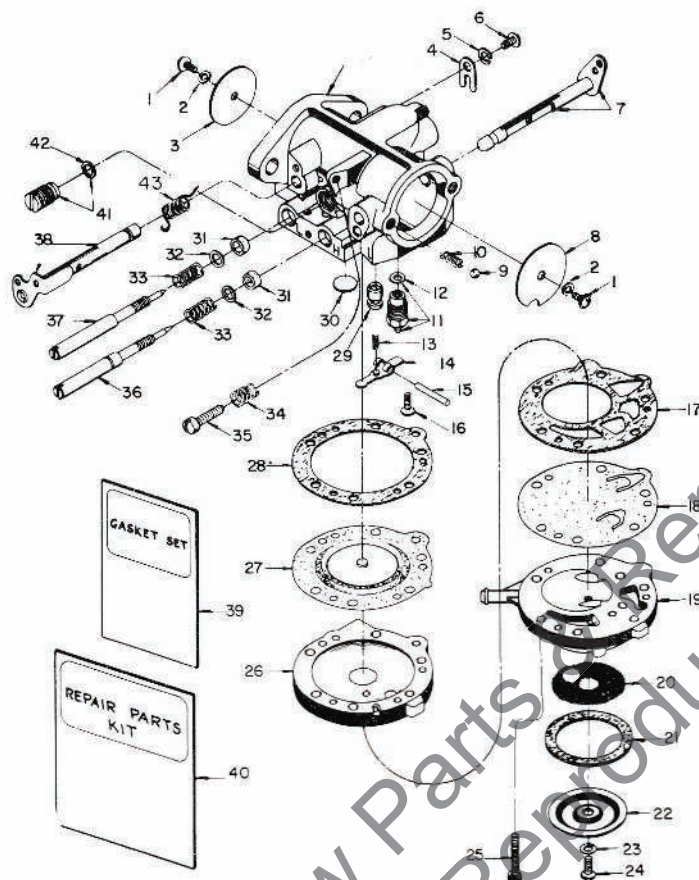
No.	Description	Part No.	Qty.	No.	Description	Part No.	Qty.
1	LINE ASSEMBLY-oil pickup	A-44010	1	30	WORM-gear	63893	1
*2	RESERVOIR-oil	A-58941-A	1	31	WASHER-thrust	56132	2
3	FILTER-oil	A-64293	1	*32	HUB & DRUM	A-67239	1
*4	GASKET-oil reservoir	67122	1	*33	SPROCKET-spline, .404 pitch, 8 tooth	65960	1
5	LINE-oil pickup	59674	1		Optional- 1/2 pitch, 6 tooth	67017	1
6	CONNECTOR-oil	58337-A	1	34	BEARING-needle	65393	1
7	PLUNGER-oil pump	A-57854-10	1	35	RACE-inner	65348	1
8	Includes: "O" RING-shaft	59074	1	*36	SPRING-clutch	67441	2
9	"O" RING-plunger	74388	1	*37	SPIDER-clutch	58547-3	1
10	SPRING-plunger	59293	1	*38	SHOE-clutch	55076-6	6
*11	DRIVECASE	A-67592	1	*39	COVER-clutch	67120	1
	Includes: TUBE-oil line (not shown)	59023	1	40	WASHER-flat	64027	1
12	SEAL	56256-A	1	41	NUT-hex, 3/8-24	81192	1
13	BOLT-guide bar	58334	2	*42	COVER-drivecase (2)	A-64074-1A	1
14	CAP-oil	A-63717-A	1	43	Includes: SCREW-rd., 5/16-18 x 2	80617	1
15	Includes: GASKET	56607	1	44	PIN-adjusting	55613-1	1
	VALVE-check (not shown)	63718	1	45	NUT-5/16-18	81123	1
16	BALL-check	26527	2	46	PLATE-guard	64029-2	1
17	SPRING-check valve	59022	2	47	NUT-hex, 3/8-16	81089-2	2
*18	SEAT-valve	A-67237	1	48	PLATE-guide bar (outer)	56872-B	1
	Includes: "O" RING (not shown)	58406	1	49	PLATE-guide bar (inner)	56871-A	1
*19	GASKET-check valve cap	67123	1	50	KIT-spiked bumper	A-63089	1
*20	CAP-check valve	67150	1		KIT-spiked bumper (optional)	A-58543	1
21	SCREW-fil., 8-32 x 3/4	82156	5	51	Includes: WASHER-lock, 1/4	83009	2
*22	PUMP-automatic oil (long stroke)	A-67579	1	52	NUT-hex, 1/4-20	81053	2
	PUMP-automatic oil (optional-short stroke)	A-64073-A	1	53	SCREW-flat, 1/4-20 x 3/4	80053	2
23	Includes: SCREW-cam	64102-A	1	54	HANDLE BAR-wrap around	A-59922	1
24	GASKET	59736	1		HANDLE BAR-wrap around-optional	A-58398	1
25	"O" RING	90872	2		HANDLE BAR-flush cut-optional	A-65848-1	1
26	SEAL-felt	59926	1		HANDLE BAR-reversible bow-optional	A-64727	1
27	SCREW-pan, 4-40 x 1/4	80919	2	55	SCREW-socket, 5/16-18 x 7/8 (1)	80886	1
28	SCREW-hex, 8-32 x 1/2	80560	3	55	WASHER-lock, 5/16	83003	3
29	SCREW-hex, 12-24 x 3/4	80867	5	56	SCREW-hex, 5/16-18 x 1 1/2	80087	3

① Use with Handle Bar A-64727

② *A-67511 Kit, Drivecase Cover (extended) available at your Homelite dealer.

*Denotes new parts.

SUPER 2000



HL 273A

No.	Part No.	Description	Qty.	No.	Part No.	Description	Qty.
1	80591	§ SCREW-rd. hd., 4-40 x 1/4	2	22	58526	COVER-strainer	1
2	83008-1	§ WASHER-lock	2	23	28098	GASKET-strainer cover screw	1
*3	67478	SHUTTER-throttle	1	24	58525	§ SCREW-pump cover	1
4	73086	CLIP-throttle shaft	1	25	55316	SCREW-body w/lockwasher	6
5	83000	WASHER-lock, #8	1	26	A-58533	COVER-main diaphragm	1
6	73088	SCREW-flat hd., 8-32 x 5/16	1	27	57829	§ DIAPHRAGM-main control	1
7	A-64627	SHAFT & LEVER-choke	1	28	57824	GASKET-cover diaphragm	1
8	64625	SHUTTER-choke	1	*29	A-67479	NOZZLE-main	1
9	25527	BALL-check, 5/32" diameter	2	30	30818	§ PLUG-expansion	1
10	73264	SPRING-choke friction	1	31	75733	PACKING-adjusting screw	2
11	A-64628	§ NEEDLE & SEAT	1	32	75735	WASHER-adjusting screw	2
12	55344	GASKET-inlet seat	1	33	73075	§ SPRING-adjusting needle	2
13	65603	§ SPRING-control lever	1	34	28064	§ SPRING-throttle stop	1
14	55747	§ LEVER-inlet control	1	35	71509	§ SCREW-idle stop	1
15	64622	§ PIN-fulcrum	1	*36	67477	§ NEEDLE-adjusting (main mixture)	1
16	58992	§ SCREW-fulcrum pin retaining	1	37	58680	§ VALVE-needle (idle mixture)	1
17	58529	GASKET-pump diaphragm	1	*38	A-67480	SHAFT & LEVER-throttle	1
18	57729	§ DIAPHRAGM-fuel pump	1	39	64629	§ GASKET & PACKING SET	1
19	59265	BODY-fuel pump	1	*40	67524	REPAIR PARTS KIT	1
20	58527	§ SCREEN-fuel inlet	1	41	A-65891	VALVE-governor	1
21	55751	GASKET-pump strainer	1	42	74060	GASKET	1
				43	64624	SPRING-throttle return	1

§ Indicates contents of Repair Parts Kit.

* Indicates new part number.

TOOLS

22820-2	COLLAR-main bearing installation
23136	SLEEVE-bearing and shaft installation
A-23137	JACKSCREW-clutch
23233-1	PLUG-seal assembling (crankcase)
23373-4	COLLAR-bearing installation
23382	SPACER-crankshaft assembling
23384	PLUG-seal installation (drivecase)
23390	SLEEVE-crankshaft assembling
23528	WRENCH-socket screw (conn. rod)
23671	PLUG-seal assembling (drivecase)
A-23672	JACKSCREW-magneto
A-23696	WRENCH-spanner
A-23858	FIXTURE-drivecase
A-24284	WRENCH-combination

A-24028	PULLER-magneto rotor
A-24138	REAMER-valve seat
24206-1	PLUG-bearing installation (conn. rod)
24207-1	PLATE-crankshaft aligning
24210-1	COLLAR

DECAL

#23742	(universal replacement) composed of "Direct Drive", "Gear Drive", "Starting Instructions", and two "Homelite" (letters 1/4" and 1/2" high).
--------	---

PAINT

23475	SPRAY CAN-red
22772	SPRAY CAN-black

Numerical Parts List - SUPER 2000

Part No.	Description	Qty.	Part No.	Description	Qty.	Part No.	Description	Qty.	Part No.	Description	Qty.
19238-3	Screw	2	*58172-4	Tank	1	64050-1	Pulley	1	*67123	Gasket	1
22772	Paint-Black	1	58181-A	Trigger	1	64052	Shield	1	*67129	Piston Ring	1
22820-2	Collar	1	58190-S	Bearing	1	64053-A	Rotor	1	*A-67130	Carburetor	1
23136	Sleeve	1	58308-A	Seal	1	64054	Stud	2	67139	Cup	1
A-23137	Jackscrew	1	58319-A	Ring	2	A-64073-A	Pump	1	*67150	Cap	1
23233-1	Plug	1	A-58321	Lead	1	*A-64074-1A	Cover	1	67177	Bushing	1
23373-4	Collar	1	58334	Bolt	2	64102-A	Screw	1	*67208-1	Bracket	1
23382	Spacer	1	58337-A	Connector	1	A-64140-1	Cap	1	*A-67237	Seat	1
23384	Plug	1	*A-58341-A	Reservoir	1	64144	Decal	1	*A-67239	Hub & Drum	1
23390	Sleeve	1	58348	Boot	1	*A-64158-1C	Cylinder	1	*67441	Spring	2
23475	Paint-Red	1	58352-A	Spring	1	A-64178	Cover	1	*A-67465	Valve	1
23528	Wrench	1	58353	Shaft	1	64180-A	Spring	1	*A-67469	Piston & Pin	1
23671	Plug	1	A-58354	Rod	1	A-64293	Filter	1	*67477	Needle	1
A-23672	Jackscrew	1	58356-B	Rod	1	64429	Stud	2	*67478	Shutter	1
A-23696	Wrench	1	58357	Button	1	64622	Pin	1	*A-67479	Nozzle	1
23742	Decal	1	58361	Stud	1	64624	Spring	1	*A-67480	Shaft & Lever	1
A-23858	Fixture	1	58362	Grommet	3	64625	Shutter	1	*A-67511	Kit	1
A-24028	Puller	1	58384	Fitting	1	A-64627	Shaft & Lever	1	*67524	Repair Kit	1
A-24138	Reamer	1	58367	Gasket	1	A-64628	Needle & Seat	1	*A-67579	Pump	1
24206-1	Plug	1	58392	Gasket	1	64629	Gasket Set	1	A-67592	Drivecase	1
24207-1	Plate	1	A-58398	Handle Bar	1	64684	Ball	1	*A-67608	Kit	1
24210-1	Collar	1	58404	Pin	1	A-64727	Handle Bar	1	71509	Screw	1
A-24284	Wrench	1	58405	Spring	1	*64833-1	Seat	1	72065-A	Plate	1
25038	Gasket	1	58406	"O" Ring	1	64834	Retainer	1	72787-1	Stud	4
25412	Nut-5/16-24	4	58409	Ring	1	64836-2	Shield	1	73075	Spring	2
25527	Ball	4	58517	Insert	1	64837-2A	Brace	1	73086	Clip	1
27464	Stud	2	58525	Screw	1	64840	Spacer	1	73088	Screw	1
28064	Spring	1	58526	Cover	1	64841	Gasket	2	73264	Spring	1
28098	Gasket	1	58527	Screen	1	64958-S	Bearing	1	74060	Gasket	1
30818	Plug	1	58529	Gasket	1	A-64960	Bearing(Set 26)	1	74332	Pin	2
31074	Ring	1	A-58533	Cover	1	A-64964-A	Rod	1	74388	"O" Ring	1
*55076-6	Shoe	6	A-58543	Kit-Bumper	1	*64966	Ring	1	75078	Key	1
55235-A	Lead	1	*58547-3	Spider	1	64984-A	Lever	1	75733	Packing	2
55290	Sleeve	1	58680	Needle	1	64985-1	Plate	1	75735	Washer	2
55316	Screw	6	58756	Pawl	2	65348	Race-Inner	1	FASTENING PARTS		
55344	Gasket	1	58758-1	Spring	2	65358	Gasket	1	80053	1/4-20 x 3/4	2
A-55373-A	Terminal	1	58763	Washer	1	65367-1	Washer	4	80087	5/16-18 x 1 1/2	3
55613-1	Pin	1	58806	Rope	1	65390-1	Screen	1	80461-1	6-32 x 5/8	2
55664	Bearing	1	58851	Washer	2	65393	Bearing	1	80513	6 x 1/2	15
55680	Line	1	58929	Bushing	2	65479	Stud	2	80560	8-32 x 1/2	3
55747	Lever	1	58930	Stop	4	65444-S	Spark Plug	1	80579	10-32 x 3/8	2
55751	Gasket	1	58992	Screw	1	A-65446	Crankshaft	1	80591	4-40 x 1/4	2
55805	Sleeve	1	59022	Spring	2	65453	Post	1	80595	10-24 x 1/2	1
55937	Grip	1	59023	Tube	1	65454	Spring	1	80617	5/16-18 x 2	1
55978-2	Gasket	1	59064	Bushing	1	A-65458-1	Body	1	80648	10-32 x 1/2	1
55979	Cover	1	59074	"O" Ring	1	65459	Baffle	1	80660	10-24 x 7/8	2
55980	Clip	1	59094-5	Housing	1	65460-1	Cap	1	80676	12-24 x 5/8	3
55982	Nut	1	A-59229	Nut	1	65463-1	Guide	1	80864	12-24 x 1	4
55983	Washer	1	59230-1	Cover	1	A-65465-1	Shield	1	80867	12-24 x 3/4	19
55984	Wiper	1	A-59251	Filter	1	65466	Spacer	1	80869-1	10-32 x 3/8	1
55986-A	Coil	1	59253-1	Filter	1	65549	Nut	4	80886	5/16-18 x 7/8	1
55987	Condenser	1	59265	Body	1	65579-1	Washer	4	80912	1/4-20 x 1 1/4	1
56014	Clamp	1	59293	Spring	1	A-65583	Arrester	1	80919	4-40 x 1/4	2
56132	Washer	2	59338	Rod	1	65603	Spring	1	80994	12-24 x 1 1/4	2
56256-A	Seal	1	59674	Line	1	65711	Shield-Inner	1	81013-1	Nut-1/4-20	2
56292-A	Seal	1	59736	Gasket	1	65712	Shield-Outer	1	81053	Nut-1/4-20	2
56607	Gasket	1	59920-2	Cover	1	*A-65750-A	Handle	1	81089-2	Nut-3/8-16	2
56871-A	Plate-inner	1	A-59922	Handle Bar	1	A-65753	Crankcase	1	81104	Nut-7/16-20	1
56872-B	Plate-outer	1	59926	Seal	1	65754-1	Clamp	1	81123	Nut-5/16-18	1
57289-1	Button	1	A-63089	Kit-Bumper	1	65755-1	Clamp	1	81126	Nut-6-32	3
A-57650-3	Switch	1	63166	Reed	5	65830	Bushing	1	81192	Nut-3/8-24	1
57729	Diaphragm	1	63290	Felt	1	A-65848-1	Handle Bar	1	82156	8-32 x 3/4	5
57733	Tab	1	63356	Gasket	1	A-65891	Valve	1	82157	10-32 x 3/4	2
57744	Box-Bkr.	1	*63655-A	Gasket	1	65903	Gasket	1	82159	6-32 x 1/4	2
57749	Screw	1	A-63717-A	Cap	1	*A-65945-B	Manifold	1	*82175	10-32 x 5/16	6
57750	Screw	1	63718	Valve	1	*65960	Sprocket	1	83000	Washer-#8	1
57824	Gasket	1	63728	Filter Element	1	67017	Sprocket	1	83003	Washer-5/16	3
57829	Diaphragm	1	63893	Worm	1	67022	Gasket	1	83008-1	Washer-#4	2
A-57834-10	Plunger	1	A-64010	Line Assy.	1	*67107	Reed	1	83009	Washer-1/4	4
A-58165	Points	1	64027	Washer	1	*67120	Cover	1	83046	Washer-#10	3
			64029-2	Plate	1	*67121	Gasket	1	83061	Washer	2
			64049-A	Lock	1	*67122	Gasket	1	84047	Washer	1
									86301	Pin-Cotter	1
									86324	Pin-Cotter	1
									90872	"O" Ring	2

*Denotes new parts

SUPER 2000

HOMELITE®

A **textron** DIVISION

PORT CHESTER, N. Y., U. S. A.