

PARTS LIST

# HOMELITE®

CHAIN SAWS

**SUPER 1050  
AUTOMATIC**

**AND**

**SUPER 1130G  
AUTOMATIC**

**HOMELITE®**

PRICE .35

Textron DIVISION, PORT CHESTER, N.Y. 19373

PART NO. 24685

# Super 1050 Automatic & Super 1130G Automatic

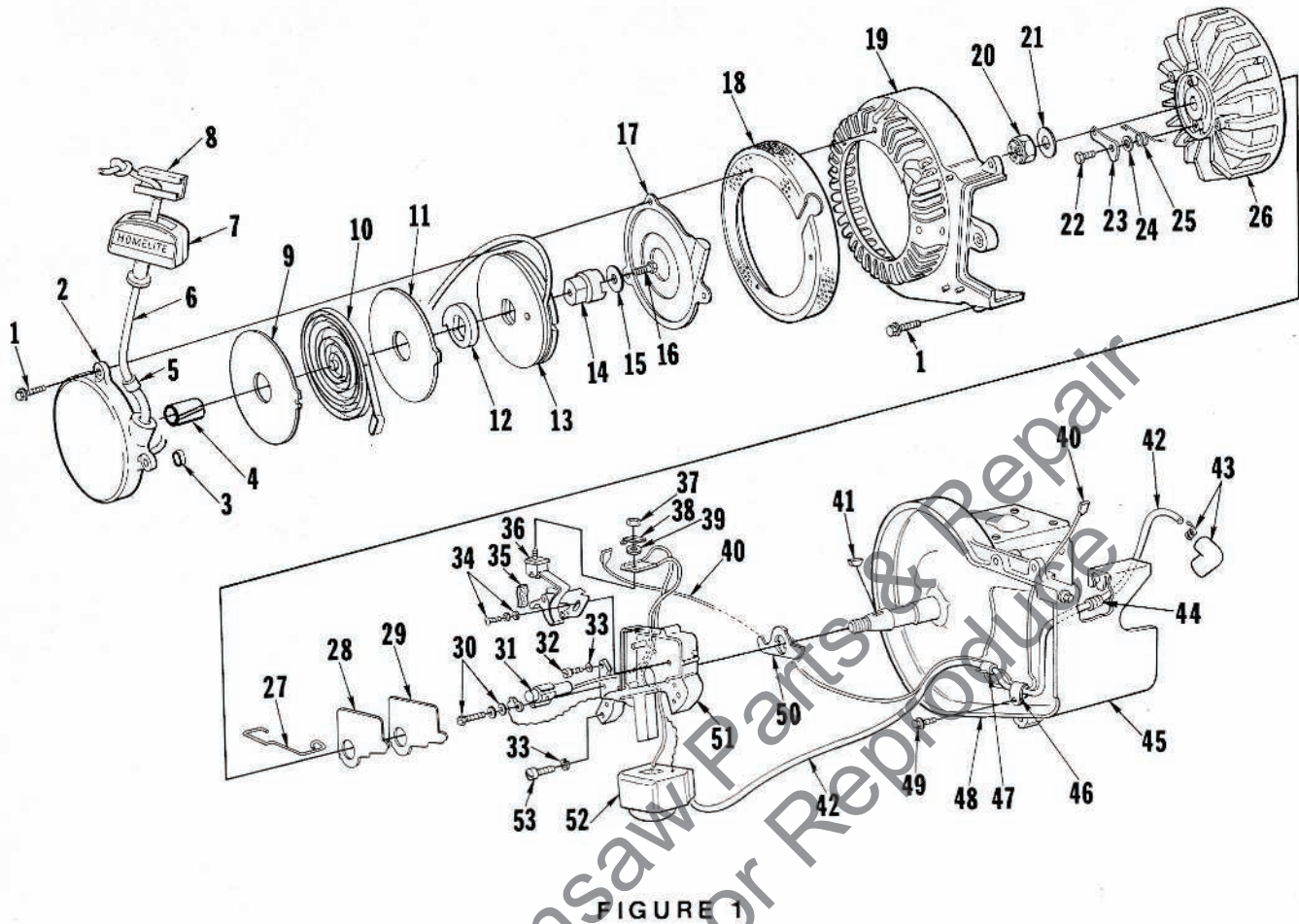


FIGURE 1

No.	Description	Part No.	Qty.	No.	Description	Part No.	Qty.
1	SCREW-hex, 12-24 x 3/4	80597	7	27	CLAMP-breaker box cover	55980	1
2	COVER-starter	A-64178-3A	1	28	COVER-breaker box	55979	1
	Includes:			29	GASKET-breaker box	55978-2	1
3	BUSHING-spring outer loop	65830	1	30	SCREW GROUP-condenser	57750	1
4	BUSHING-starter post	64443-1	1	31	CONDENSER-w/terminal	55987	1
5	BUSHING-starter rope	67177	1	32	SCREW-fil, 10-24 x 1/2	80595	1
6	ROPE-starter, 48" #5	58806	1	33	WASHER-lock, #10	83046	3
7	GRIP-rope	55937	1	34	SCREW GROUP-point	57749	1
8	INSERT-rope retaining	58517	1	35	POINT SET	A-58165	1
9	SHIELD-spring (inner)	65711	1	36	Includes: WICK	55984	1
10	SPRING-rewind	64180-A	1	37	NUT-terminal	55982	1
11	SHIELD-spring (outer)	65712	1	38	TAB-ground	57733	1
12	LOCK-rewind spring	64049-A	1	39	WASHER-terminal	55983	1
13	PULLY-starter	64050-1	1	40	LEAD-ground w/terminals	A-58321	1
14	CUP-starter	67139	1	41	KEY-rotor	75078	1
15	WASHER-retaining	58763	1	42	LEAD-high tension	58382	1
16	SCREW-hex, 10-32 x 1/2	80648	1	43	TERMINAL-spark plug	A-55373-A	1
17	SHIELD-sawdust	64052	1	44	GROMMET	68046	1
18	SCREEN-fan housing	65390-2	1	45	SHIELD-cylinder	A-63736-1	1
19	HOUSING-fan	59094-1	1	46	CLAMP-lead	56014	1
20	NUT-lock, 7/16-20	81104	1	47	SLEEVE-insulating	55290	1
21	WASHER-flat	84047	1	48	CRANKCASE-w/pin (see Fig. 2)	A-64532	1
22	STUD-shoulder	64054	2	49	SCREW-hex, 10-32 x 3/8	80869-1	1
23	PAWL-starter	58756	2	50	SEAL-breaker box	56292-A	1
24	WASHER-lock, #12	83056	2	51	BOX-breaker w/core	57744	1
25	SPRING-starter pawl	58758-1	2	52	COIL-w/ground terminal	55986-A	1
26	ROTOR	64053-A	1	53	SCREW-fil, 10-24 x 7/8	80660	2

# Super 1050 Automatic & Super 1130G Automatic

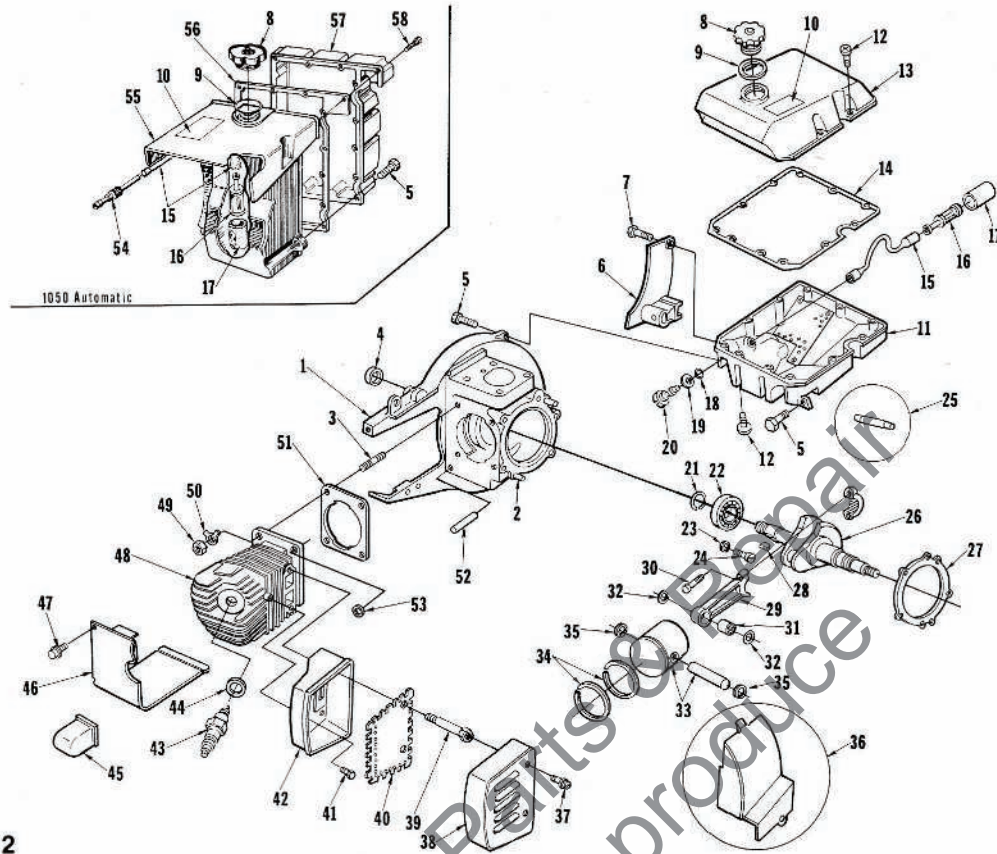


FIGURE 2

No.	Description	Part No.	1050		Qty.	No.	Description	Part No.	1050		Qty.
			S	S					S	S	
1	CRANKCASE-w/pins Includes:	A-64532	x	x	1	33	PISTON & PIN Includes:	A-69189	x	x	1
2	PIN-dowel	74322	x	x	2	34	PISTON RING	56291	x	x	2
3	STUD	72787-1	x	x	1	35	RING-retaining	64743	x	x	2
4	SEAL	59303-A	x	x	1	36	EXCHANGER-heat (optional)	63103-1	x	x	1
5	SCREW-hex, 12-24 x 3/4	80867	x	x	8	37	SCREW-hex, 12-24 x 3/8	80837	x	x	2
6	BRACKET-handle bar	59635-2	x	x	1	38	CAP-muffler	A-59963-2	x	x	1
7	SCREW-hex, 12-24 x 7/8	80891	x	x	1	39	CAP-muffler	A-64464-2	x	x	1
8	CAP-fuel tank Includes:	A-64140-1	x	x	1	40	STUD-muffler	59982-B	x	x	2
9	GASKET	63358	x	x	1	41	BAFFLE-muffler	59978-A	x	x	1
	VALVE-vent (not shown)	63718	x	x	1		BAFFLE-muffler	59978-1	x	x	1
10	DECAL-caution	64144	x	x	1	42	SCREW-hex, 1/4-20 x 5/8	80402	x	x	1
11	TANK-fuel w screen Includes:	A-67739	x	x	1	43	BODY-muffler	A-59927-2	x	x	1
12	SCREW-1/11, 8-32 x 5/8	82146	x	x	11	44	SPARK PLUG	63547-S	x	x	1
13	COVER-fuel tank	59687-3	x	x	1	45	Includes: GASKET	25038	x	x	1
14	GASKET-fuel tank	67677	x	x	1	46	CAP-spark plug	63735	x	x	1
15	FLEXIBLE LINE	55805	x	x	1	47	CYLINDER SHIELD	A-63736-1	x	x	1
16	FILTER ASSEMBLY	A-59251	x	x	1	48	SCREW-hex, 10-24 x 3/8	80869-1	x	x	2
17	Includes: FILTER	59253-1	x	x	1	49	CYLINDER	58175-3	x	x	1
18	"O" RING	67900	x	x	1	50	NUT-hex, 5/16-24	25412	x	x	4
19	GASKET	63175-1	x	x	1	51	WASHER-tab lock	65367-1	x	x	1
20	FITTING-fuel	63132	x	x	1	52	GASKET-cylinder	64453	x	x	1
21	RING-retaining	58319-A	x	x	1	53	SLEEVE-insulating	55290	x	x	1
22	BEARING-ball	58190-S	x	x	1	54	WASHER-lock, 5/16	83002	x	x	3
23	WASHER-lock	83061	x	x	2	55	FITTING-fuel outlet	58364	x	x	1
24	SCREW-bearing retaining	19238-3	x	x	2	56	TANK-fuel	58172-4	x	x	1
25	ROLLERS-set of 31	A-69062	x	x	1	57	GASKET-fuel tank cover	58367	x	x	1
26	CRANKSHAFT	A-64068	x	x	1	58	COVER-fuel tank	59920-2	x	x	1
27	GASKET	63356	x	x	1		SCREW-rd., 6 x 1/2	80513	x	x	15
28	KEY-woodruff	75078	x	x	1		ACCESSORIES (not shown)				
*29	CONNECTING ROD Includes:	A-69170	x	x	1	32	SPARK ARRESTOR (see Note)	A-63518	x	x	1
30	SCREW-10-32 x 5/8	80345	x	x	2		MUFFLER	A-64411	x	x	1
31	BEARING-needle	59606	x	x	1		Includes:				
*32	WASHER-thrust	68719	x	x	2		BODY-muffler	A-64410-1	x	x	1
							CAP-muffler	64408-1	x	x	1
							SCREW-shoulder	63855-A	x	x	3
							SHIELD-muffler	64409-2	x	x	1
							STUD-muffler	59982-B	x	x	1
							SCREW-hex, 1/4-20 x 5/8	80402	x	x	2

\* Denotes new parts

Note: A-63518 Spark Arrestor requires one 63548 Shim under each muffler stud.

ALWAYS FURNISH MODEL AND SERIAL NUMBER WHEN ORDERING PARTS.

# Super 1050 Automatic & Super 1130G Automatic

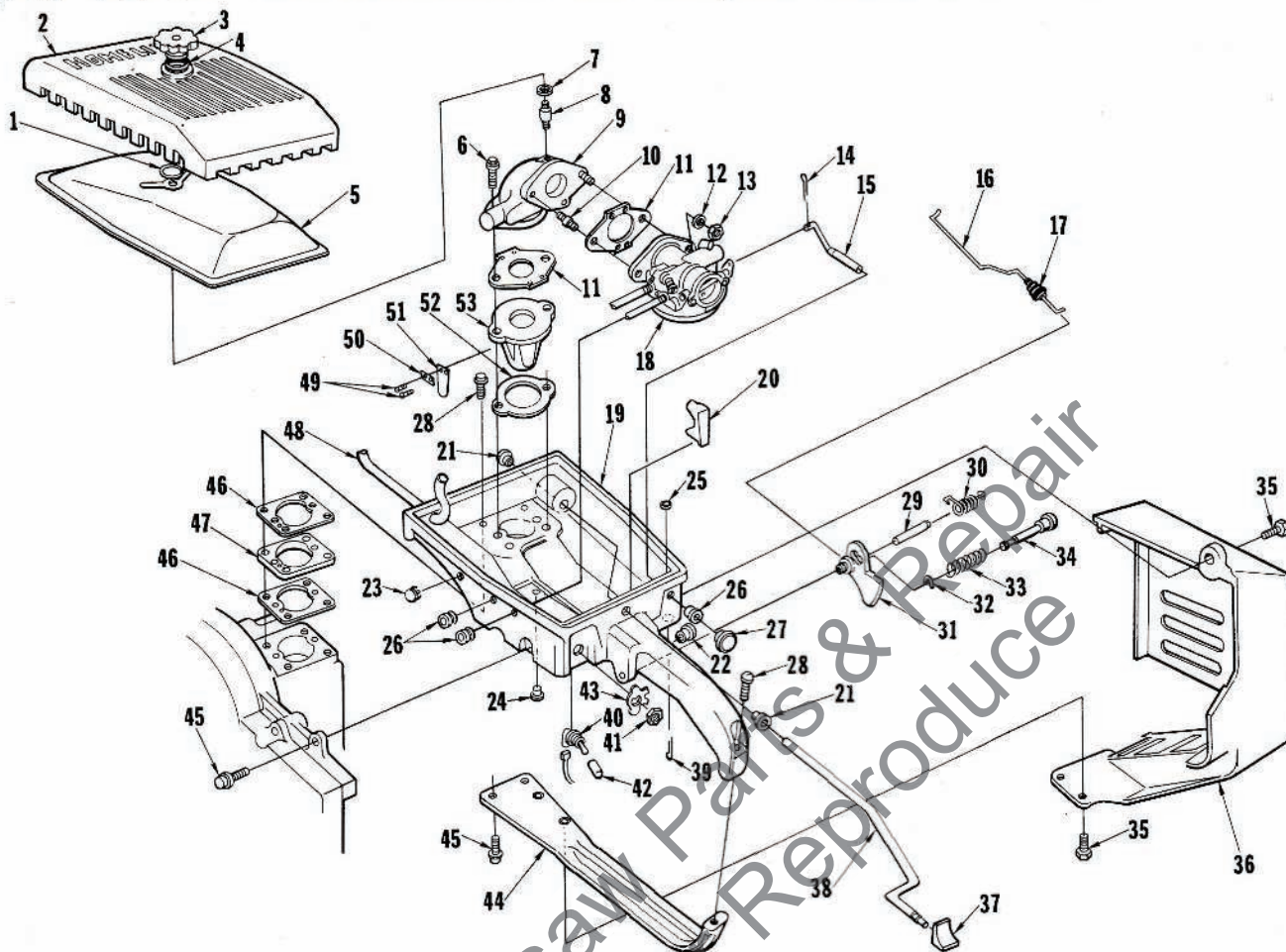
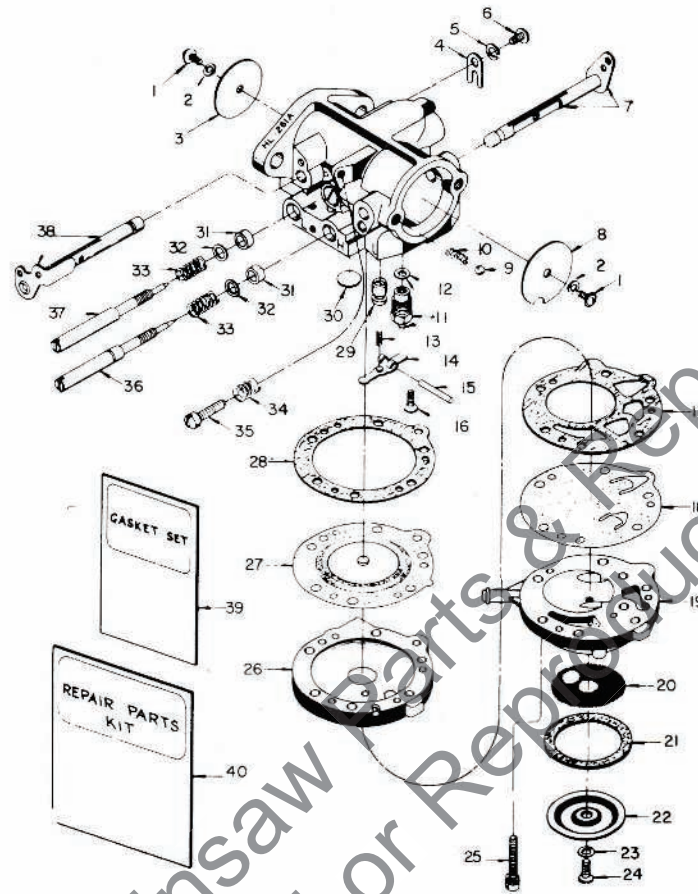


FIGURE 3

No.	Description	Part No.	Qty.	No.	Description	Part No.	Qty.
1	RING-retaining	58319-A		27	BUTTON-choke rod	57289-1	1
2	COVER-air filter	59280-1	1	28	SCREW-hex, 12-24 x 1	80864	5
3	NUT-cover	A-59229	1	29	SHAFT-trigger throttle	58353	1
4	"O" RING	60052	1	30	SPRING-trigger throttle	58352-A	1
5	ELEMENT-air filter	63728	1	31	TRIGGER-throttle	58181-A	1
6	SCREW-hex, 1/4-20 x 1-1/2	80882	2	32	RING- retaining	58409	1
7	GASKE'T-stud	58392	1	33	SPRING-throttle latch	58405	1
8	STUD-cover	58361	1	34	PIN-throttle latch	58404	1
9	MANIFOLD-intake	58183-2	1	35	SCREW-hex, 12-24 x 5/8	80676	3
10	STUD-carburetor	27464	2	36	SHIELD-muffler	63733-2A	1
11	GASKET-carburetor	63655-A	2	37	BUTTON-oil rod	58357	1
12	WASHER-lock, 1/4	83009	2	38	ROD-oil pump	58356-B	1
13	NUT-hex, 1/4-20	81013-1	2	39	PIN-cotter, 1/16 x 1/2	86301	1
14	PIN-cotter, 1/32 x 1/2	86324	1	40	SWITCH-toggle	A-57650-3	1
15	ROD-choke	A-58354	1	41	Includes: NUT	72084-A1	1
*16	ROD-throttle	59338-A	1	42	SLEEVE-grounding switch	69092	1
17	BOOT-throttle rod	58348	1	43	PLATE-"On-Off"	72085-A	1
*18	CARBURETOR-11L-261-AX	A-69276	1	44	BRACE-throttle handle	58185-A1	1
19	HANDLE-throttle	A-63665	1	45	SCREW-hex, 12-24 x 3/4	80867	3
	Includes:			46	GASKET-throttle handle spacer	58343	2
20	STOP-oil rod	58930	1	47	SPACER-throttle handle	58391	1
21	BUSHING-oil rod	58929	2	48	LINE-fuel	55680	1
22	BUSHING-latch pin	59064	1	49	SCREW-pan, 4-40 x 3/16	80658	8
23	PLUG-button	64607	1	50	CLAMP-reed	59629	4
24	PLUG-button	A-64744	1	51	REED-valve	59628	4
	Includes:			52	GASKET-spacer adapter	55946	1
	"O" RING (not shown)	59765	1	53	SEAT-reed valve	59627-1	1
25	FELT	63290	1				
26	GROMMET	58362	3				

\* Denotes new parts

# Super 1050 Automatic & Super 1130G Automatic



A - 69276 HL - 261 - AX

No.	Description	Part No.	Qty.	No.	Description	Part No.	Qty.
1	SCREW-rd. hd., 4-40 x 1/4	† 80591	2	22	COVER-strainer	58526	1
2	WASHER-lock	† 83008-1	2	23	GASKET-strainer cover screw	28098	1
3	SHUTTER-throttle	64623	1	24	SCREW-pump cover	† 58525	1
4	CLIP-throttle shaft	73086	1	25	SCREW-body w/lock washer	55316	6
5	WASHER-lock, #8	83000	1	26	COVER-main diaphragm	A-58533	1
6	SCREW-flat hd., 8-32 x 5/16	73088	1	27	DIAPHRAGM-main control	† 57829	1
7	SHAFT & LEVER-choke	A-64627	1	28	GASKET-cover diaphragm	57824	1
8	SHUTTER-choke	64625	1	29	NOZZLE-main	A-77429	1
9	BALL-check, 5/32" diameter	25527	2	30	PLUG-expansion	† 30818	1
10	SPRING-choke friction	73264	1	31	PACKING-adjusting screw	75733	2
11	NEEDLE & SEAT	A-64628	1	32	WASHER-adjusting screw	75735	2
12	GASKET-inlet seat	55344	1	33	SPRING-adjusting needle	† 73075	2
13	SPRING-control lever	† 65603	1	34	SPRING-throttle stop	† 28064	1
14	LEVER-inlet control	† 55747	1	35	SCREW-idle stop	† 71509	1
15	PIN-fulcrum	† 64622	1	36	NEEDLE-adjusting (main mixture)	65604	1
16	SCREW-fulcrum pin retaining	† 58992	1	37	VALVE-needle (idle mixture)	58680	1
17	GASKET-pump diaphragm	58529	1	38	SHAFT & LEVER-throttle	A-64626	1
18	DIAPHRAGM-fuel pump	† 57729	1	39	GASKET & PACKING SET	† 68657	1
19	BODY-fuel pump	59265	1	40	REPAIR PARTS KIT	68663	1
20	SCREEN-fuel inlet	† 58527	1		GASKET & DIAPHRAGM SET	63590	
21	GASKET-pump strainer	55751	1				

† Indicates contents of Repair Parts Kit

# Super 1050 Automatic

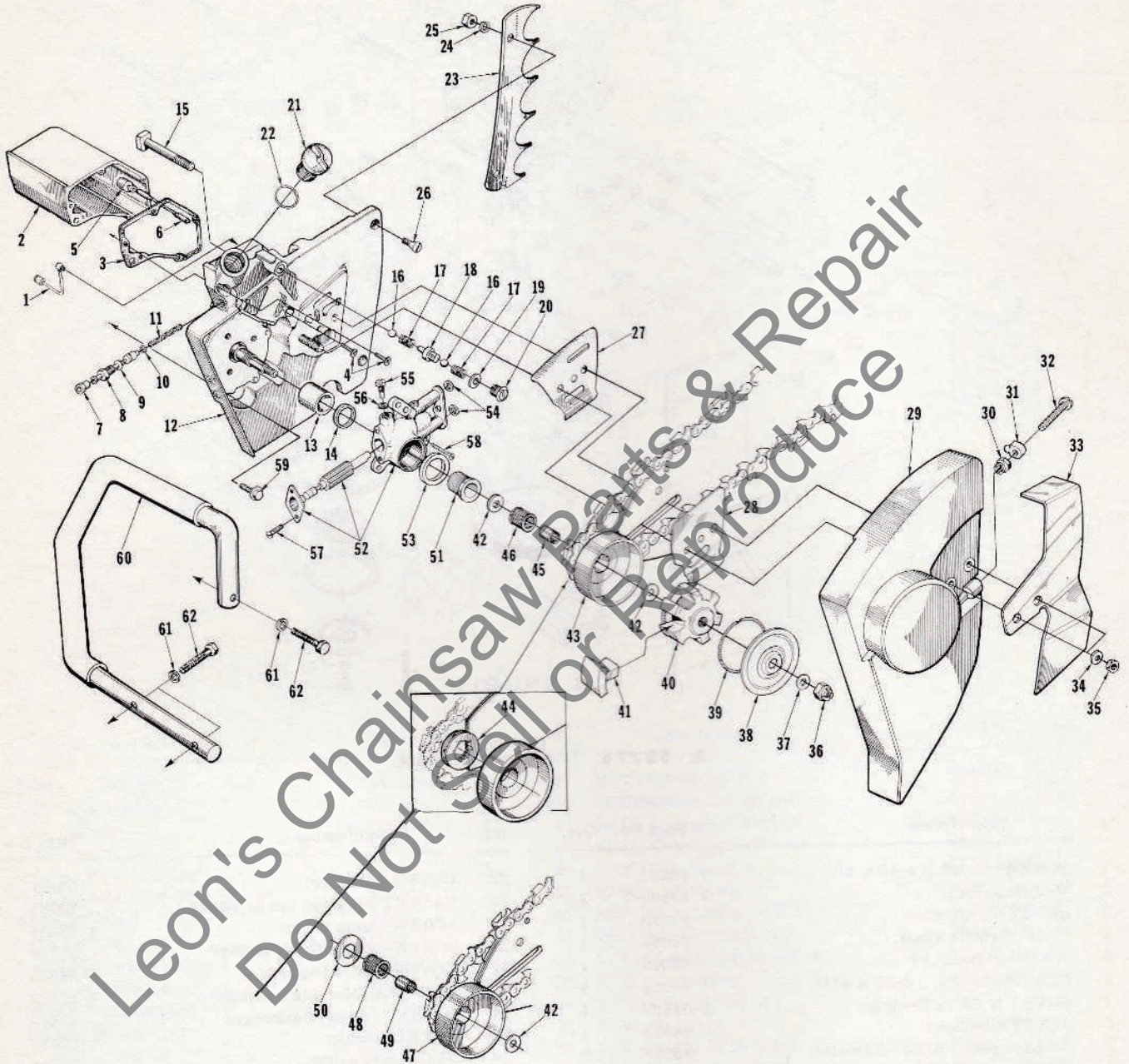


FIGURE 4

# Super 1050 Automatic

No.	Description	Part No.	Qty.	No.	Description	Part No.	Qty.
1	LINE-oil pickup	A-64010	1	33	GUARD-chain (Note 1)	64029-2	1
2	RESERVOIR-oil	A-58341-A	1	34	WASHER-flat, 3/8	84099	2
	Includes:			35	NUT-hex, 3/8-16	81089-2	2
3	GASKET-reservoir	67122	1	36	NUT-hex, 3/8-24	81192	1
4	SCREW-fil, 8-32 x 3/4	82156	5	37	WASHER-flat	64027	1
	PIN-cotter (not shown)	86301	1	38	COVER-clutch	56238-A	1
5	FILTER-oil	A-64293	1	39	SPRING-clutch	55123-C	2
6	LINE-oil pickup	59674	1	40	SPIDER-clutch	58546-2	1
7	CONNECTOR-pump	58337-A	1	41	SHOE-clutch	55076-3	6
8	PLUNGER-oil pickup	A-57834-10	1	42	WASHER-thrust	56132	2
	Includes:			43	DRUM & HUB (rim type)	A-65991	1
9	"O" RING-shaft	59074	1	44	SPROCKET-.404 pitch, 8 tooth	65960	1
10	"O" RING-plunger	74388	1		SPROCKET-1/2" pitch, 6 tooth	67017	1
11	SPRING-plunger	59293	1	45	RACE-inner	65348	1
12	DRIVECASE	A-64264-B	1	46	BEARING-needle caged	65393	1
	Includes:			47	SPROCKET & DRUM (open type) Note 2		
	TUBE-oil line (not shown)	59023	1		.404 pitch, 8 tooth	A-57341	1
13	BEARING-needle	63043	1		7/16" pitch, 7 tooth	A-56299	1
14	SEAL	56256-A	1		1/2" pitch, 7 tooth	A-56615	1
15	BOLT-guide bar	58334	2		Includes:		
16	BALL-check	25527	2	48	BEARING-needle (Note 2)	56230	1
17	SPRING	59022	2	49	RACE-inner (Note 2)	56231	1
18	SEAT-valve	A-67959	1	50	WASHER-thrust (Note 2)	56236	1
19	GASKET	67123	1	51	WORM-gear	63893	1
20	CAP-check valve	67958	1	52	PUMP-automatic oil (short stroke)	A-64073-A	1
21	CAP-oil	A-63717-A	1		PUMP-automatic oil (long stroke)	A-67579	1
	Includes:				Includes:		
	VALVE-check (not shown)	63718	1	53	SEA L-felt	59926	1
22	GASKET	56607	1	54	"O" RING	59074	2
23	KIT-bumper spiked (short spikes)	A-58548	1	55	SCREW-cam	64102-A	1
	KIT-bumper spiked (long spikes)	A-63089	1	56	GASKET	59736	1
	Includes:			57	SCREW	80919	2
24	WASHER-lock, 1/4	83009	2	58	SCREW-hex, 8-32 x 1/2	80560	3
25	NUT-hex, 1/4-20	81053	2	59	SCREW-hex, 12-24 x 3/4	80867	5
26	SCREW-flat, 1/4-20 x 3/4	80053	2	*60	HANDLE BAR-flush cut	A-69174-1	1
27	PLATE-guide bar (inner)	67669	1		HANDLE BAR-wrap around (not shown)	A-58398	1
28	PLATE-guide bar (outer)	67670	1		HANDLE BAR-wrap around (not shown)		
29	COVER-drivecase	A-64074-1A	1		Note 1	A-59922	1
	Includes:				HANDLE BAR-reversible bow (not shown)		
30	NUT-5/16-18	81123	1		Note 3	A-64727	1
31	PIN-adjusting	55613-1	1	61	WASHER-lock, 5/16	83003	3
32	SCREW-5/16-18 x 2-1/8	82219	1	62	SCREW-hex, 5/16-18 x 1-1/2	80087	3
	ACCESSORY (not shown)						
	KIT-drivecase cover (extended)	A-67511			Note 1 - A-59922 Handle Bar requires a 64029-2 Chain Guard.		
	Includes:				Note 2 - When using open type sprockets index number 47, items 48, 49 and 50 must also be used.		
	COVER-drivecase	67213-2	1		Note 3 - A-64727 Handle Bar requires a 80886 screw.		
	PLATE-guard	67399-1	1		* Denotes new parts		
*	HANDLE BAR-wrap around and items #30, 31 & 32	A-69208-1	1				

# Super 1130G Automatic

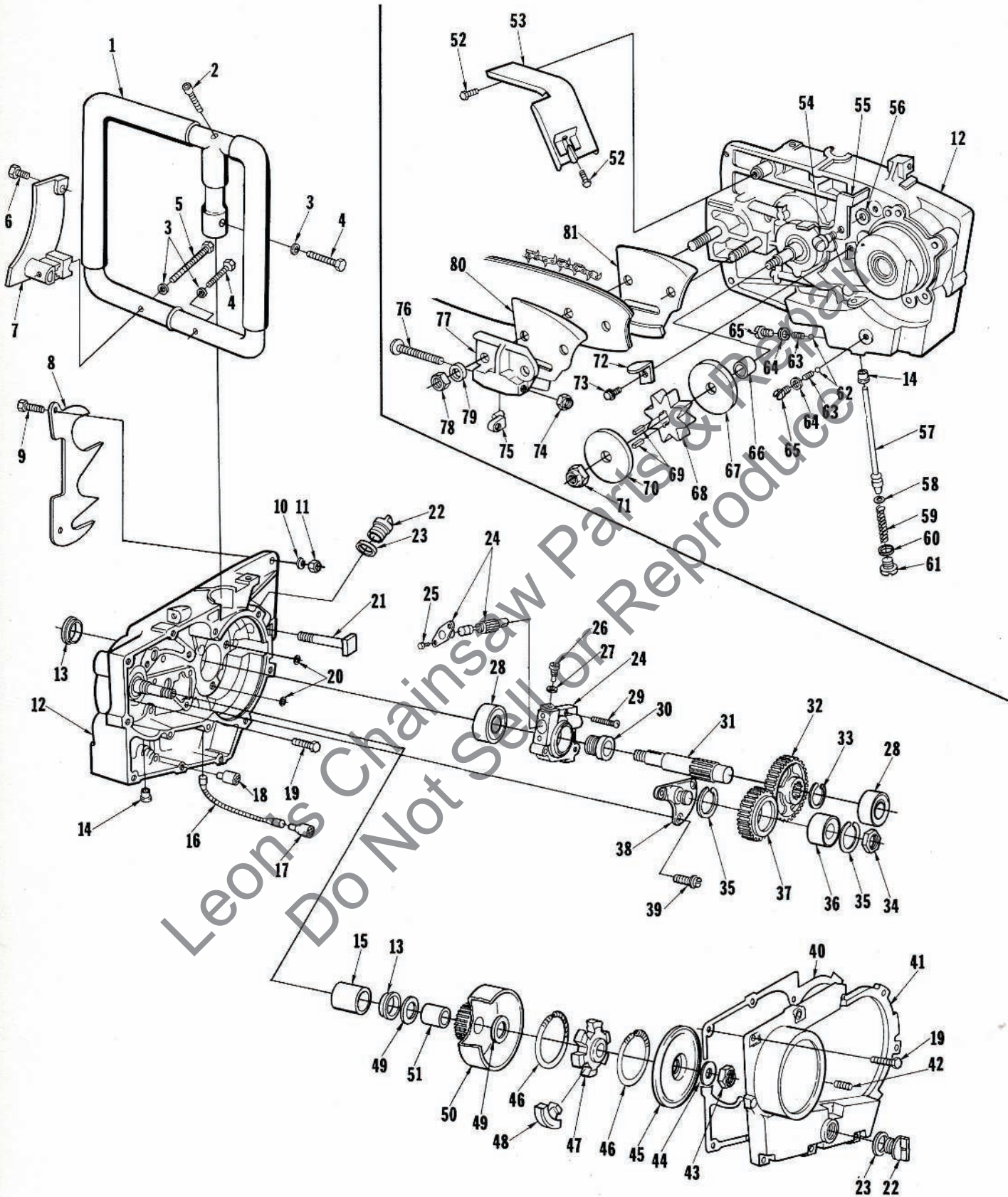


FIGURE 5



# Super 1130 G Automatic

No.	Description	Part No.	Qty.	No.	Description	Part No.	Qty.
* 1	HANDLE BAR	A-69268-1	1	37	GEAR-idler	59250	1
	HANDLE BAR-wrap around	A-63136	1	38	POST-idler gear	59259-1A	1
	Includes:			39	SCREW-hex, 1/4-20 x 3/4	63407	3
2	SCREW-soc, 5/16-18 x 1	80308	1	40	GASKET	63124	1
3	WASHER-lock, 5/16	83003	3	41	COVER-gear housing	59631-4	1
4	SCREW-hex, 5/16-18 x 1-1/2	80087	2	42	PLUG-pipe	28097	1
5	SCREW-hex, 5/16-18 x 3-1/4	80698	1	43	NUT-hex, 3/8-24	81192	1
6	SCREW-hex, 12-24 x 7/8	80891	1	44	WASHER	55036	1
7	BRACKET-handle bar	59635-2	1	45	COVER-clutch	58023-A	1
8	KIT-spiked bumper (long spikes)	A-63413	1	46	SPRING-clutch	67441	2
	Includes:			47	SPIDER-clutch	58547-3	1
9	SCREW-hex, 1/4-20 x 7/8	80181-3	2	48	SHOE-clutch	A-67519	6
10	WASHER-lock, 1/4	83009	2	49	WASHER-thrust	56132	2
11	NUT-1/4-20	81053	2	50	DRUM-clutch w/gear	A-63123	1
	KIT-spiked bumper (not shown)			51	BEARING-sleeve	56603	1
	short spikes	A-63138	1	52	SCREW-hex, 12-24 x 3/8	80837	3
	Includes:			53	GUARD-chain	A-63776	1
	SCREW-hex, 1/4-20 x 3/4	80218-1	2		Includes:		
	WASHER-lock, 1/4	83009	2		DETECTOR-sawdust (not shown)	63715	1
	NUT-1/4-20	81053	2		RIVET (not shown)	85125	3
12	HOUSING-gear	A-63398-C	1	54	SCREW-pivot	59591	1
	Includes:			55	BELL CRANK	59592	1
13	SEAL	56256-A	2	56	WASHER-thrust	63109	1
14	BUSHING-rod	59064	1	57	PLUNGER-oil pump	A-63112	1
	ELBOW (not shown)	59532	1	58	Includes: "O" RING	74388	1
15	BEARING	76167-S	1	59	SPRING-compression	59293	1
16	LINE-oil	59674	1	60	WASHER	58138	1
17	FILTER-oil (automatic)	A-64293	1	61	CAP-oil pump	63115	1
18	FILTER-oil (manual)	A-63116	1	62	BALL-check	25527	2
19	SCREW-hex, 12-24 x 3/4	80867	17	63	SPRING-check valve	59022	2
20	"O" RING	59074	2	64	GASKET-check valve cap	65144	2
21	BOLT-guide bar	55334	2	65	CAP-check valve	65143	2
22	CAP-filler (oil)	A-63717-A	2	66	SPACER-sprocket	59697	1
	Includes per cap:			67	WASHER-sprocket (inner)	56074	1
	VALVE-check (not shown)	63718	1	68	SPROCKET-1/2" pitch, 8 tooth	55593-3	1
23	GASKET	56607	1		9/16" pitch, 7 tooth	74481-1	1
24	PUMP-automatic oil	A-63092	1	69	KEY-sprocket	56076-1A	2
	Includes:			70	WASHER-sprocket (outer)	56077	1
25	SCREW-pan, 4-40 x 1/4	80919	2	71	NUT-hex, 1/2-20	81101	1
26	SCREW-cam	64102-A	1	72	BRACKET-rod	63110	1
27	GASKET	59736	1	73	SCREW-hex, 10-24 x 3/8	80869-1	1
28	BEARING-ball	63107-S	2		PLATE-adjusting	A-55591	1
29	SCREW-hex, 8-32 x 7/8	80568	3		Includes:		
30	WORM-gear	63084-A	1	74	NUT-hex lock	81123	1
31	SHAFT-sprocket	59277-A	1	75	PIN-guide bar adjusting	55552-1	1
32	GEAR-driven; 3:1 ratio, 64 teeth	59276-1	1	76	SCREW-rd., 5/16-18 x 2-1/8	82219	1
	2:1 ratio, 42 teeth	59298-1	1	77	PLATE	55551-2	1
33	RING-retaining	63108	1	78	NUT-hex, 3/8-16	81089-2	2
34	NUT-idler gear	57768-A	1	79	WASHER-lock, 3/8	83018	2
35	RING-retaining	28922	2	80	PLATE-guide bar (outer)	56957-A	1
36	BEARING-ball	72328-S	1	81	PLATE-guide bar (inner)	56956	1

\* Denotes new parts

# Super 1050 Automatic & Super 1130G Automatic

## Tools

22820-2	COLLAR-main bearing installation
A-23672	JACKSCREW-magneto
84035	Includes: WASHER (1)
23670	PLATE-crankshaft aligning
22750	PLATE-sprocket locking (Super 1130G Auto)
22828	PLIERS-retaining ring (piston)
23391-3	PLUG-bearing installation (Super 1130G Auto)
23228	PLUG-bearing installation (Super 1130G Auto)
23874	PLUG-bearing installation (conn. rod)
23913	PLUG-bearing and seal installation (Super 1130G Auto)
23420	PLUG-bearing installation, (clutch) (Super 1050 Auto)
23876	PLUG-bearing installation, (drivecase) (Super 1050 Auto)
A-23950	PLUG-piston pin remover
67900	Includes: "O" RING (1)
23233-1	PLUG-seal installation, (crankcase)
23671	PLUG-seal installation, (gear housing)
A-24028	PULLER-magneto rotor
80450	Includes: SCREW (2)
81208	NUT (2)
23136-2	SLEEVE-bearing and shaft installation
23693	SLEEVE-seal protecting
A-24284	WRENCH-combination
23528	WRENCH-socket screw (conn. rod)
A-23696-A	WRENCH-spanner
23717-A	Includes: PIN (2)

## Accessories

23742	DECAL (universal replacement) composed of "Direct Drive", "Gear Drive", "Starting Instructions" and two "HOMELITE" (letters 1/4" and 1/2" high).
A-67757	HANDLE-helper (Super 1130G Auto)
	Includes:
67760	NUT-tee (1)
67759	PLUG-shoulder (2)
A-67763	KNOB-helper handle (1)
23488-B	LOCTITE
55291-C	OIL-gear (1 pt. container) Super 1130G Auto
57084-1	REEL-250' Starter Rope #5

## Paint

22772	PAINT-black (spray can)
23475	PAINT-red (spray can)

# Super 1050 Automatic & Super 1130G Automatic

Part No.	Description	Qty.	Part No.	Description	Qty.	Part No.	Description	Qty.
19238-3	Screw	2	56074	Washer-sprocket	1	58517	Insert	1
22750	Plate-sprocket	1	56076-1A	Key-sprocket	2	58525	Screw-cover	1
22772	Spray Can-black	1	56077	Washer-sprocket	1	58526	Cover-strainer	1
22820-2	Collar	1	56132	Washer-thrust	2	58527	Screen-fuel	1
22828	Pliers-retaining	1	56230	Bearing-needle	1	58529	Gasket-fuel pump	1
23136-2	Sleeve-bearing	1	56231	Racc-inner	1	A-58533	Cover-main dia.	1
23228	Plug-bearing	1	56236	Washer-inner	1	A-58543	Kit-bumper	1
23233-1	Plug-seal	1	56238-A	Cover-clutch	1	58546-2	Spider-clutch	1
23391-3	Plug-bearing	1	56256-A	Seal	2	58547-3	Spider-clutch	1
23420	Plug	1	56291	Piston Ring	2	58680	Needle-idle	1
23475	Spray Can-red	1	56292-A	Seal-bkr. box	1	58756	Pawl-starter	2
23488-B	Loctite	1	A-56299	Sprocket & Drum	1	58758-1	Spring-pawl	2
23528	Wrench-soc.	1	56603	Bearing-sleeve	1	58763	Washer-retaining	1
23670	Plate-c/shaft	1	56607	Gasket	1	58806	Rope-starter	1
23671	Plug-drivecase	1	A-56615	Sprocket & Drum	1	58929	Bushing	2
A-23672	Jackscrew	1	56956	Plate-guide bar	1	58930	Stop-rod	1
23693	Sleeve-seal	1	56957-A	Plate-guide bar	1	58992	Screw	1
A-23696-A	Wrench-spanner	1	57084-1	Reel-starter rope		59022	Spring-check valve	2
23717-A	Pin	2	57289-1	Button-rod	1	59023	Tube-oil line	1
23742	Decal	1	A-57341	Sprocket & Drum	1	59064	Bushing-rod	2
23874	Plug-bearing	1	A-57650-3	Switch		59074	"O" Ring	3
23876	Plug-d/case	1	57729	Diampragm	1	59094-1	Housing-fan	1
23913	Plug-bearing	1	57733	Tab-ground	1	A-59229	Nut-cover	1
A-24028	Puller-rotor	1	57744	Box-bkr. w. core	1	59230-1	Cover-air filter	1
A-24284	Wrench-comb.	1	57749	Screw Group	1	59250	Gear-idler	1
25038	Gasket	1	57750	Screw Group	1	A-59251	Filter Assembly	1
25412	Nut-hex	4	57768-A	Nut-idler gear	1	59253-1	Filter	1
25527	Ball-check	3	57824	Gasket-diaphragm	1	59259-1A	Post-idler gear	1
27464	Stud-carburetor	2	57829	Diaphragm	1	59265	Body-fuel pump	1
28064	Spring-throttle	1	A-57834-10	Plunger-oil	1	59276-1	Gear-driven	1
28097	Plug-pipe	1	58023-A	Cover-clutch	1	59277-A	Shaft-sprocket	1
28098	Gasket-cover	1	58138	Washer	1	59293	Spring-compression	1
28922	Ring-retaining	2	A-58165	Point Set	1	59298-1	Gear-driven	1
30818	Plug	1	58172-4	Tank-fuel	1	*59338-A	Rod-throttle	1
55036	Washer	1	58175-3	Cylinder	1	59532	Elbow-oil line	1
55076-3	Shoe-clutch	6	58181-A	Trigger-throttle	1	59591	Screw-pivot	1
55123-C	Spring-clutch	2	58183-2	Manifold-intake	1	59592	Bellerank	1
55290	Sleeve-insulating	2	58185-A1	Brace	1	59606	Bearing-needle	1
55291-C	Oil-gear	1	58190-S	Bearing-ball	1	59627-1	Seat-reed valve	1
55316	Screw	6	58308-A	Seal-shaft	1	59628	Reed-valve	4
55344	Gasket	1	58319-A	Ring-retaining	2	59629	Clamp-reed	4
A-55373-A	Terminal	1	A-58321	Lead-ground	1	59631-4	Cover-gear housing	1
55551-2	Plate-guide bar	1	58334	Bolt-guide bar	2	59635-2	Bracket-handle bar	2
55552-1	Pin	1	58337-A	Connector	1	59674	Line-oil	1
A-55591	Plate-adjusting	1	58343	Gasket-spacer	2	59687-3	Cover-fuel tank	1
55593-3	Sprocket	1	58348	Boot-throttle rod	1	59597	Spacer-sprocket	1
55613-1	Pin-guide bar	1	58352-A	Spring	1	59736	Gasket	1
55680	Line-fuel	1	58353	Shaft-trigger	1	59765	"O" Ring	1
55747	Lever	1	A-58354	Rod-choke	1	59920-2	Cover-fuel tank	1
55751	Gasket	1	58356-B	Rod-oil pump	1	A-59922	Handle Bar	1
55805	Flexible Line	1	58357	Buttom-oil rod	1	59926	Seal-felt	1
55937	Grip-rope	1	58361	Stud-cover	1	A-59927-2	Body-muffler	1
55946	Gasket-spacer	1	58362	Grommet	3	A-59963-2	Cap-muffler	1
55978-2	Gasket	1	58364	Fitting	1	59978-A	Baffle-muffler	1
55979	Cover-bkr. box	1	58367	Gasket	1	59978-1	Baffle-muffler	1
55980	Clip-cover	1	58382	Lead-high tension	1	59982-B	Stud-muffler	2
55982	Nut-hex	1	58391	Spacer	1	63043	Bearing-needle	1
55983	Washer-terminal	1	58392	Gasket-stud	1	63084-A	Worm-gear	1
55984	Wiper	1	A-58398	Handle Bar	1	A-63089	Kit-spiked bumper	1
55986-A	Coil	1	58404	Pin-throttle lock	1	A-63092	Pump-auto. oiler	1
55987	Condenser	1	58405	Spring-lock	1	63103-1	Exchanger-heat	1
56014	Clamp-lead	1	58409	Ring-retaining	1	63107-S	Bearing-ball	2

\* Denotes new parts

Continued

Part No.	Description	Qty.	Part No.	Description	Qty.	Part No.	Description	Qty.
63108	Ring-retaining	1	64625	Shutter-choke	1	73264	Spring-choke	1
63109	Washer-thrust	1	A-64626	Shaft & Lever	1	74332	Pin-dowel	2
63110	Bracket-rod	1	A-64627	Shaft & Lever	1	74388	"O" Ring	1
A-63112	Plunger	1	A-64628	Needle & Seat	1	74481-1	Sprocket	1
63115	Cap-oil pump	1	A-64727	Handle Bar	1	75078	Key-rotor	2
A-63116	Filter-oil	1	64743	Ring-retaining	1	75733	Packing	2
A-63123	Drum-clutch	1	A-64744	Plug-button	1	75735	Washer	2
63124	Gasket	1	65143	Cap-check valve	2	76167-S	Bearing-needle	1
63132	Fitting- fuel	1	65144	Gasket	2	A-77429	Nozzle-main	1
A-63136	Handle Bar	1	65348	Race-inner	1	FASTENING PARTS		
A-63138	Kit-bumper	1	65358	Gasket	1	80053	1/4-20 x 3/4	2
63175-1	Gasket-fuel	1	65367-1	Washer-lock	1	80087	5/16-18 x 1-1/2	3
63290	Felt	1	65390-2	Screen	1	80181-3	1/4-20 x 7/8	2
63356	Gasket	1	65393	Bearing-needle	1	80218-1	1/4-20 x 3/4	2
A-63398-C	Housing-gear	1	65603	Spring	1	80308	5/16-18 x 1	1
63407	Screw-hex	3	65604	Needle-adjusting	1	80345	10-32 x 5/8	2
A-63413	Kit-bumper	1	65711	Shield-inner	1	80402	1/4-20 x 5/8	2
A-63518	Spark Arrestor	1	65712	Shield-spring	1	80450	Screw	2
63547-S	Spark Plug	1	65830	Bushing	1	80513	6 x 1/2	15
63548	Shim	1	65960	Sprocket	1	80560	8-32 x 1/2	3
63590	Gasket & Dia.	1	67017	Sprocket	1	80568	8-32 x 7/8	3
63655-A	Gasket-carb.	2	67122	Gasket	1	80591	4-40 x 1/4	2
A-63665	Handle-throttle	1	67123	Gasket	1	80595	10-24 x 1/2	1
63715	Deflector	1	67139	Cup-starter	1	80648	10-32 x 1/2	1
A-63717-A	Cap-oil filler	2	67177	Bushing	1	80658	4-40 x 3/16	8
63718	Valve-check	2	67213-2	Cover-d/case	1	80660	10-24 x 7/8	2
63728	Element	1	67399-1	Plate-guard	1	80676	12-24 x 5/8	3
63733-2A	Shield-muffler	1	67441	Spring-clutch	2	80698	5/16-18 x 3-1/4	1
63735	Cap-spark plug	1	A-67511	Kit-d/case cover	1	80837	12-24 x 3/8	5
A-63736-1	Shield-cylinder	2	A-67519	Shoe-clutch	6	80864	12-24 x 1	5
A-63776	Guard-chain	1	A-67579	Pump	1	80867	12-24 x 3/4	30
63855-A	Screw-shoulder	3	67669	Plate-guide bar	1	80869-1	10-32 x 3/8	4
63893	Worm-gear	1	67670	Plate-guide bar	1	80882	1/4-20 x 1/2	2
A-64010	Line-oil pickup	1	67677	Gasket-fuel tank	1	80886	5/16-18 x 1	1
64027	Washer-flat	1	A-67739	Tank-fuel	1	80891	12-24 x 7/8	3
64029-2	Plate-guard	1	A-67757	Handle-helper	1	80919	4-40 x 1/4	2
64049-A	Lock-spring	1	67759	Plug-shoulder	2	81013-1	Nut-1/4-20	2
64050-1	Pulley-starter	1	67760	Nut-tee	1	81053	Nut-1/4-20	2
64052	Shield-saw dust	1	A-67763	Knob-helper handle	1	81089-2	Nut-3/8-16	1
64053-A	Rotor-magneto	1	67900	"O" Ring	2	81101	Nut-1/2-20	1
64054	Stud-shoulder	2	67958	Cap	1	81104	Nut-7/17-20	1
A-64068	Crankshaft	1	A-67959	Seat-valve	1	81123	Nut-5/16-18	1
A-64073-A	Pump-oiler	1	68046	Grommet	1	81192	Nut-3/8-24	1
A-64074-1A	Cover-d/case	1	68657	Gasket Set	1	81208	Nut	2
64102-A	Screw-cam	1	68663	Kit-repair	1	82146	8-32 x 5/8	11
A-64140-1	Cap-tank	1	*68719	Washer-thrust	2	82156	8-32 x 3/4	5
64144	Decal-caution	1	69052	"O" Ring	1	82219	5/16-18 x 2-1/8	1
A-64178-3A	Cover-starter	1	A-69062	Rollers-set of 31	1	83000	Washer-#8	1
64180-A	Spring-rewind	1	69092	Sleeve	1	83002	Washer-5/16	3
A-64264-B	Drivcase	1	*A-69170	Connecting rod	1	83003	Washer-5/16	3
A-64293	Filter-oil	1	*A-69174-1	Handle Bar	1	83008-1	Washer-#4	2
A-64351	Crankshaft	1	*A-69189	Piston & Pin	1	83009	Washer-1/4	4
64408-1	Cap-muffler	1	*A-69208-1	Handle Bar	1	83018	Washer-3/8	2
64409-2	Shield-muffler	1	*A-69268-1	Handle Bar	1	83046	Washer-#10	3
A-64410-1	Body-muffler	1	*A-69276	Carburetor	1	83056	Washer-#2	2
A-64411	Muffler & Shield	1	71509	Screw-idle stop	1	83061	Washer-lock	2
64443-1	Bushing	1	72084-A1	Nut	1	84035	Washer	1
64453	Gasket-cyl.	1	72085-A	Plate-"On-Off"	1	84047	Washer-flat	1
A-64464-2	Cap-muffler	1	72328-S	Bearing-ball	1	84099	Washer-3/8	2
A-64532	Crankcase	1	72787-1	Stud	4	85125	Rivet	3
64607	Plug-button	1	73075	Spring	2	86301	Pin-cotter	1
64622	Pin-fulcrum	1	73086	Clip-shaft	1	86324	Pin-cotter	1
64623	Shutter-throttle	1	73088	Screw-flat	1	* Denotes new parts		

**HOMELITE®**