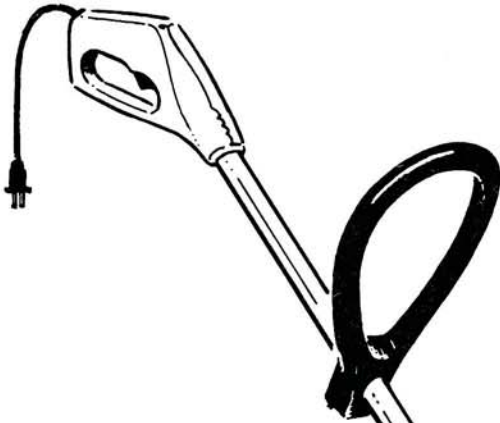


PART NO. 17510 REV. 1

Printed in U.S.A.

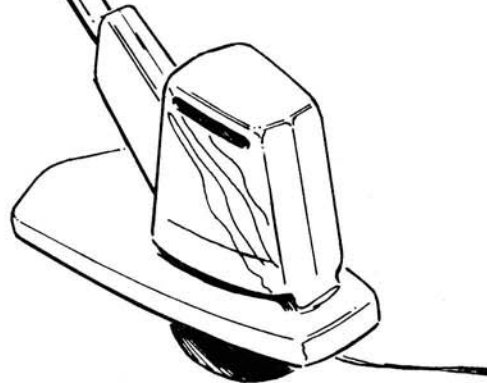
Price 35¢

PARTS LIST



HOMELITE[®]
ELECTRIC
STRING
TRIMMER

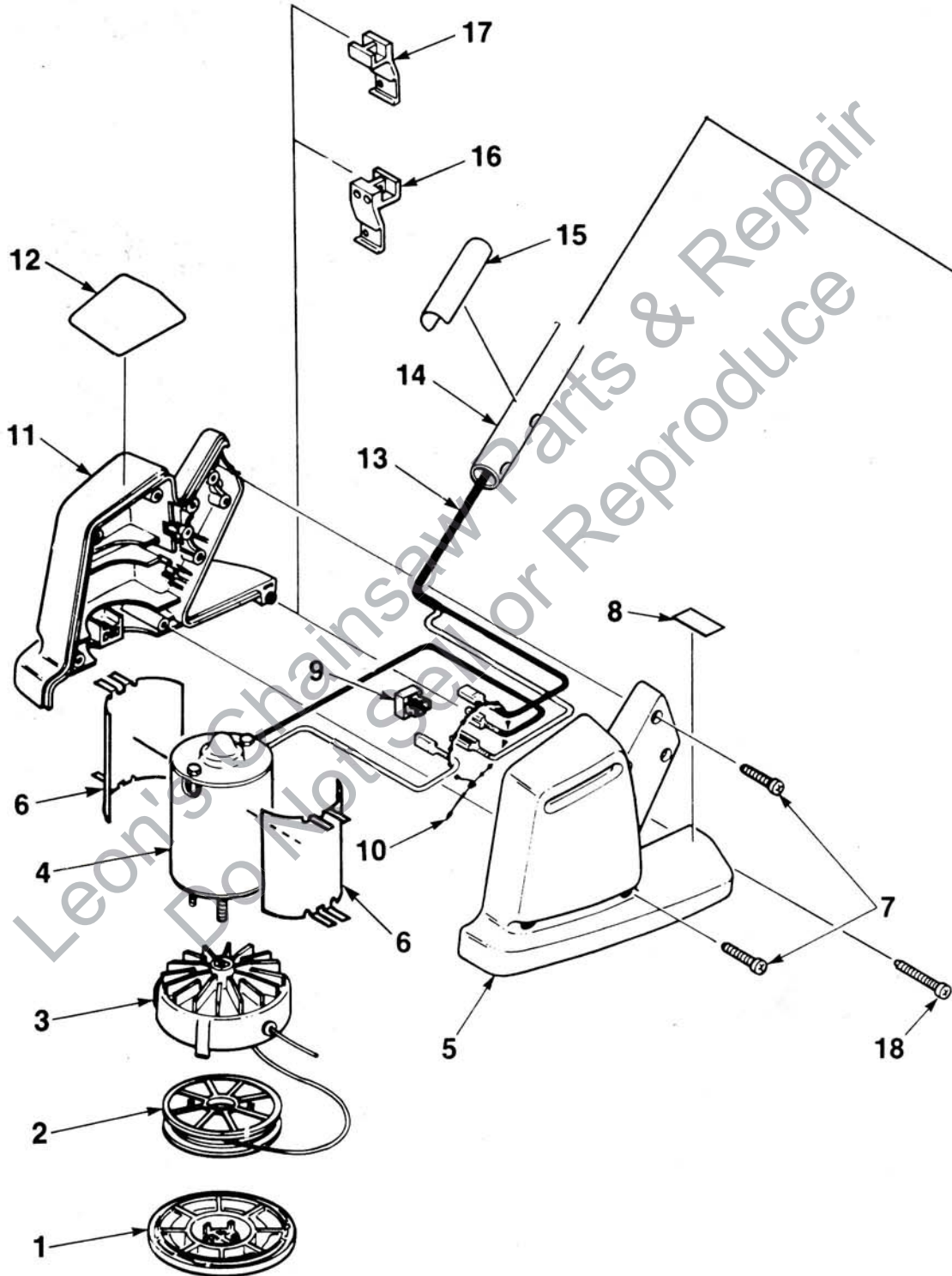
ST-40
and
ST-60



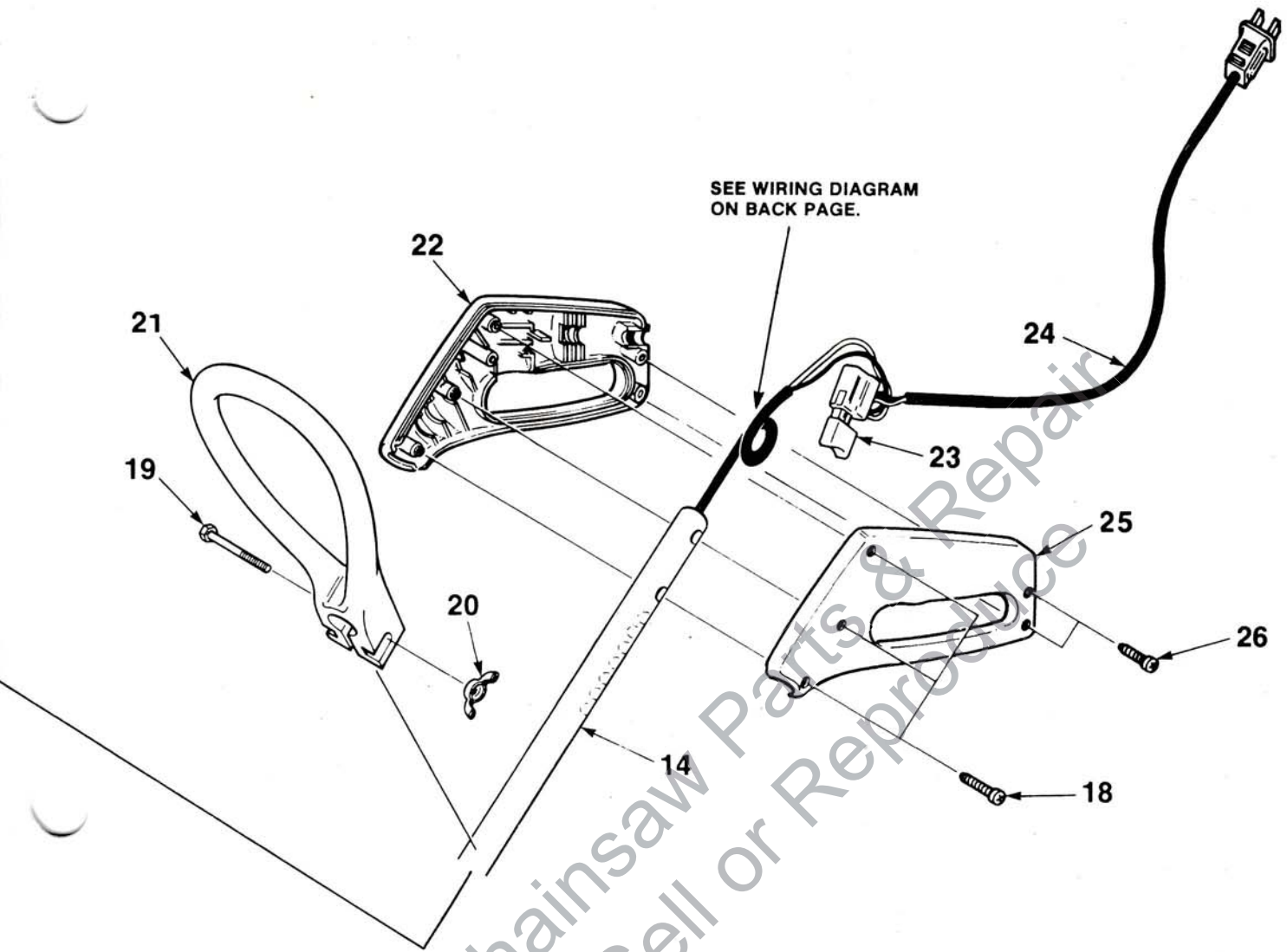
HOMELITE **TEXTRON**

Homelite Division of Textron Inc.

ST-40 and ST-60 ELECTRIC STRING TRIMMER



ALWAYS FURNISH MODEL AND SERIAL NUMBER WHEN ORDERING PARTS.



NO.	DESCRIPTION	PART NO.	QTY.	NO.	DESCRIPTION	PART NO.	QTY.
1	RETAINER SPOOL	95137-1	1	13	CABLE- Electrical	A-95111	1
2	SPOOL & STRING	DA-95916-A	1	14	TUBING	95109	1
3	HEAD- String	A-95129	1	15	DECAL- Warning	95132-1	1
4	MOTOR- Electric 120V (ST-40)	95121	1	16	CUT- OFF- String (ST-40)	A-95127-A	1
	MOTOR- Electric 120V (ST-60)	95122	1	17	CUT- OFF- String (ST-60)	A-95115-A	1
5	HOUSING- Motor (left) (ST-40)	95155	1	18	SCREW- Thread forming (10 x 1")	82408	4
	HOUSING- Motor (left) (ST-60)	95107	1	19	SCREW- Cap hex hd. 1/4-20 x 2	80295	1
6	SHIM- Motor	96816	2	20	NUT- Wing washer face	93992	1
7	SCREW- Thread forming 10-16 x 3/4	94065	8	21	HANDLE- Front	95110	1
8	DECAL- Warning	95391	1	22	HANDLE- Right side	95102	1
9	RECTIFIER	95672	1	23	SWITCH	93013	1
10	CLAMP- Wire	50729	1	24	CORD SET	95118-A	1
11	HOUSING- Motor (right) (ST-40)	95154	1	25	HANDLE- Left side	95103	1
	HOUSING- Motor (right)	95106	1	26	SCREW- Thread forming (10-16 x 9/16)	95198	2
12	DECAL (ST-40)	95152	1				
	DECAL (ST-60)	95153	1				

ACCESSORIES:

94305 POWER CORD (50')

TOOLS:

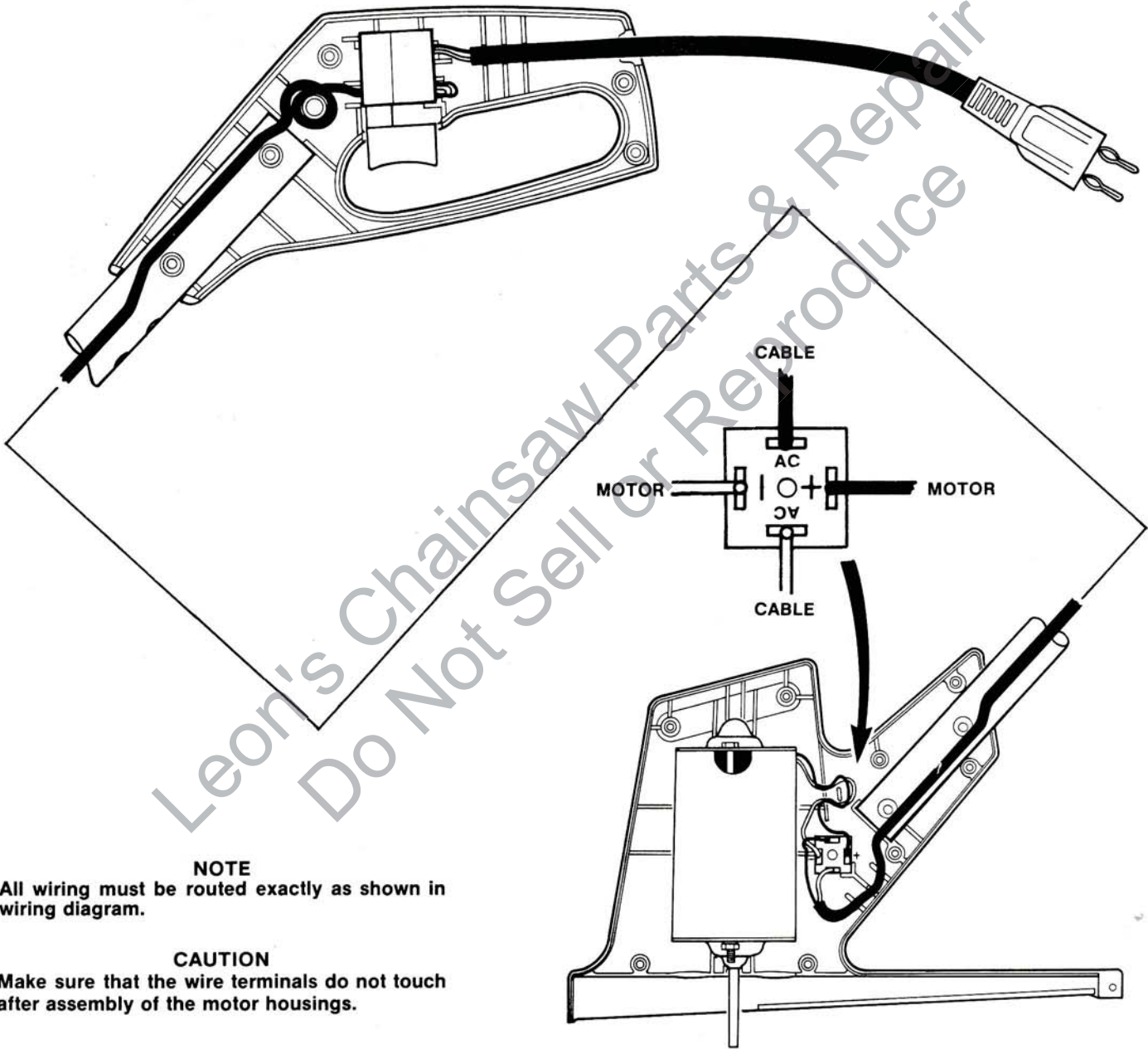
17634 TOOL- Head removal

ALWAYS FURNISH MODEL AND SERIAL NUMBER WHEN ORDERING PARTS.

ST-40 and ST-60

ELECTRIC STRING TRIMMER

WIRING DIAGRAM



NOTE

All wiring must be routed exactly as shown in wiring diagram.

CAUTION

Make sure that the wire terminals do not touch after assembly of the motor housings.

1285BNZ

HOMELITE **TEXTRON**

Homelite Division of Textron Inc.