

PART NO. 17510

Printed in U.S.A.

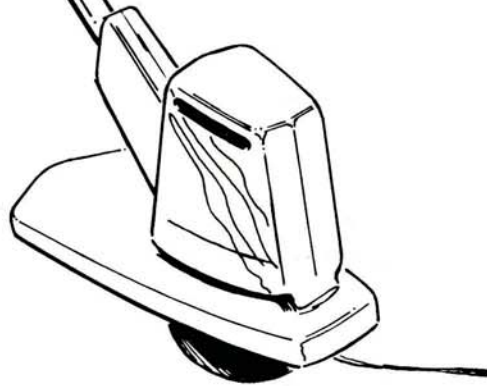
Price 35¢

PARTS LIST



HOMELITE[®]
ELECTRIC
STRING
TRIMMER

ST-40
and
ST-60

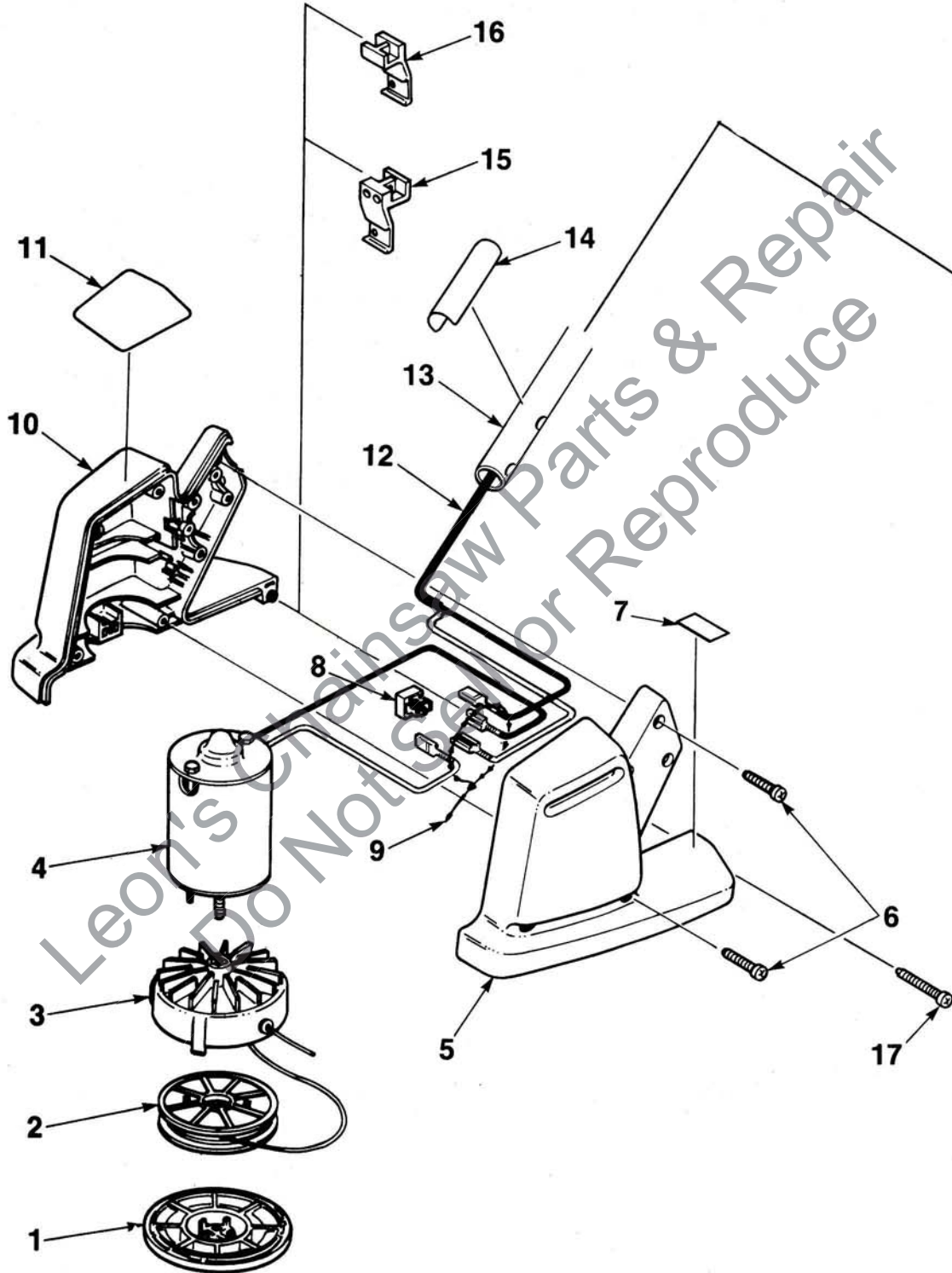


HOMELITE **TEXTRON**

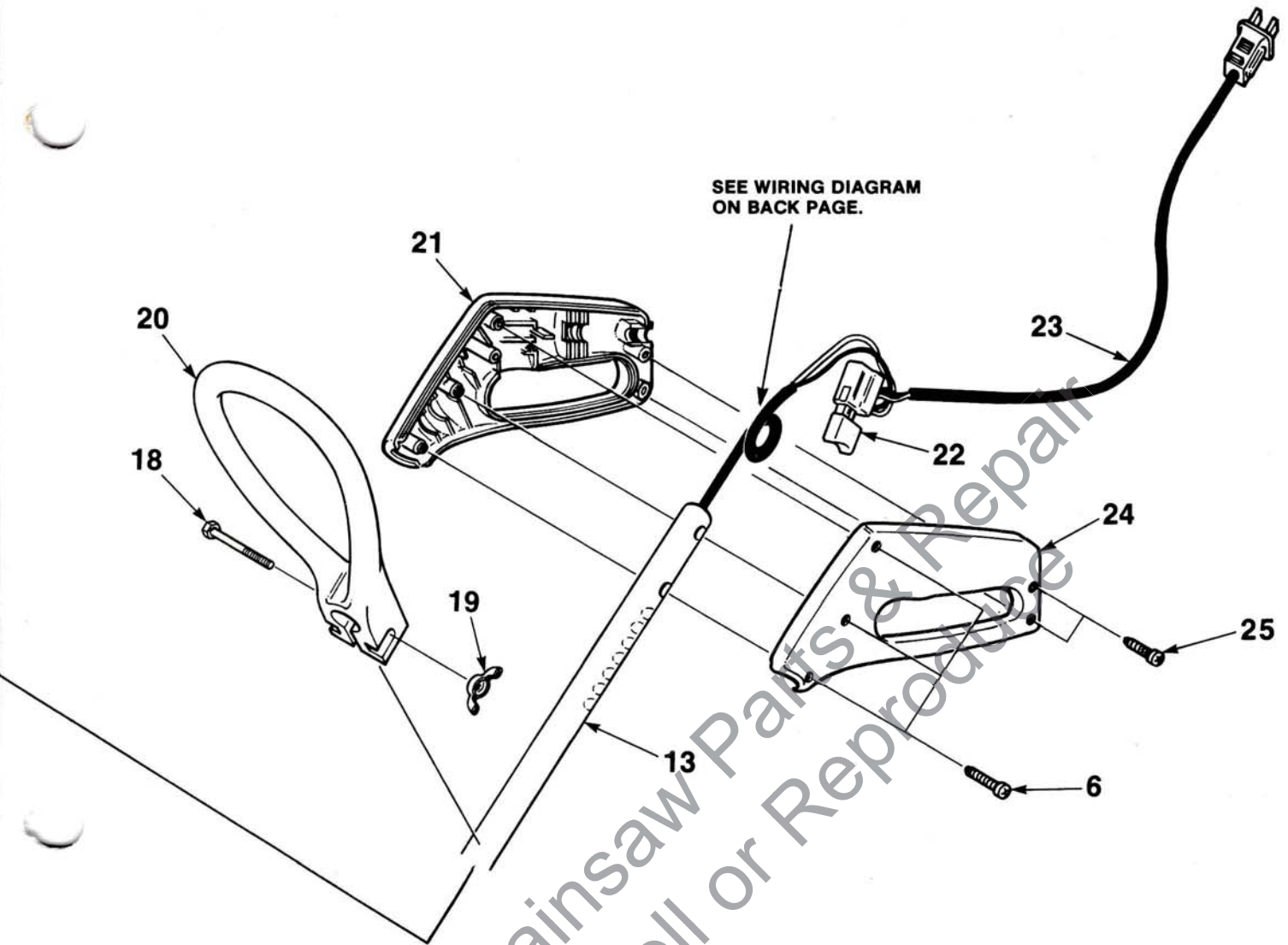
Homelite Division of Textron Inc.

ST-40 and ST-60

ELECTRIC STRING TRIMMER



ALWAYS FURNISH MODEL AND SERIAL NUMBER WHEN ORDERING PARTS.



NO.	DESCRIPTION	PART NO.	QTY.	NO.	DESCRIPTION	PART NO.	QTY.
1	RETAINER SPOOL	95137	1	12	CABLE- Electrical	A-95111	1
2	SPOOL & STRING (ST-40)	A-95160	1	13	TUBING	95109	1
	SPOOL & STRING (ST-60)	A-95916	1	14	DECAL- Warning	95132-1	1
3	HEAD- String	A-95129	1	15	CUT-OFF- String (ST-40)	A-95127	1
4	MOTOR- Electric 120V (ST-40)	95121	1	16	CUT-OFF- String (ST-60)	A-95115	1
	MOTOR- Electric 120V (ST-60)	95122	1	17	SCREW- Thread forming (10 x 1")	82408	1
5	HOUSING- Motor (Left) (ST-40)	95155	1	18	SCREW- Cap hex hd. 1/4-20 x 2	80295	1
	HOUSING- Motor (Left) (ST-60)	95107	1	19	NUT- Wing washer face	93992	1
6	SCREW- Thread forming 10-16 x 3/4	94065	11	20	HANDLE- Front	95110	1
7	DECAL- Warning	95391	1	21	HANDLE- Right side	95102	1
8	RECTIFIER	95672	1	22	SWITCH	93013	1
9	CLAMP- Wire	50729	1	23	CORD SET	95118	1
10	HOUSING- Motor (Right) (ST-40)	95154	1	24	HANDLE- Left side	95103	1
	HOUSING- Motor (Right) (ST-60)	95106	1	25	SCREW- Thread. forming 10-16 x 9/16	93243	2
11	DECAL (ST-40)	95152	1				
	DECAL (ST-60)	95153	1				

ACCESSORIES:

94305 POWER CORD (50')

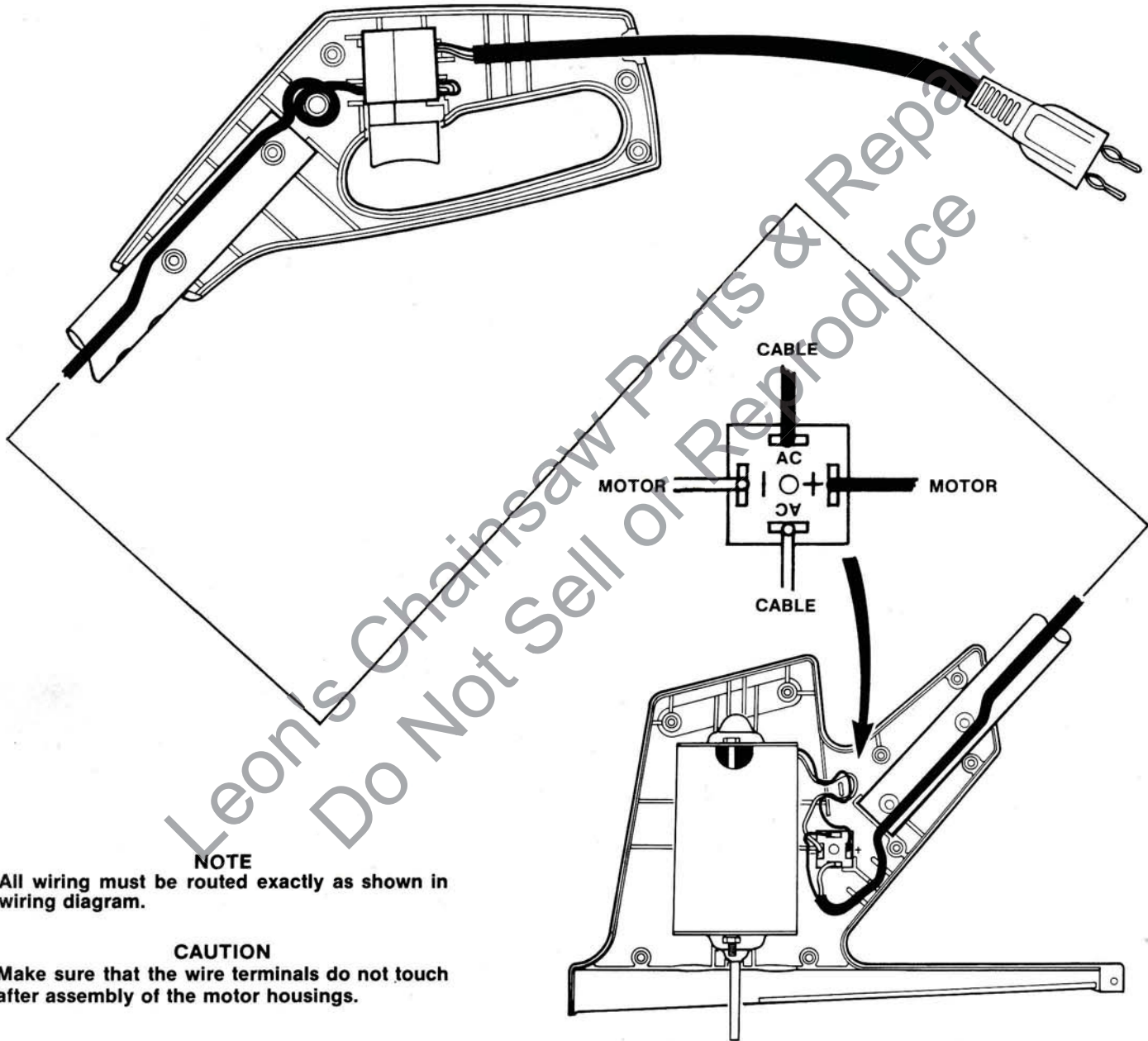
TOOLS:

17495 TOOL- Head removal

ALWAYS FURNISH MODEL AND SERIAL NUMBER WHEN ORDERING PARTS.

ST-40 and ST-60 ELECTRIC STRING TRIMMER

WIRING DIAGRAM



NOTE

All wiring must be routed exactly as shown in wiring diagram.

CAUTION

Make sure that the wire terminals do not touch after assembly of the motor housings.

0182YZ

HOMELITE **TEXTRON**

Homelite Division of Textron Inc.