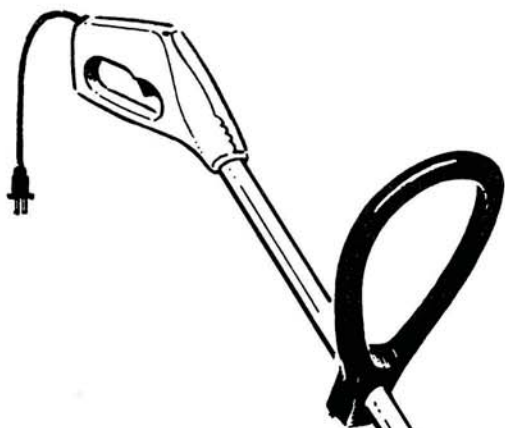


PART NO. 17510 REV. 1

Printed in U.S.A.

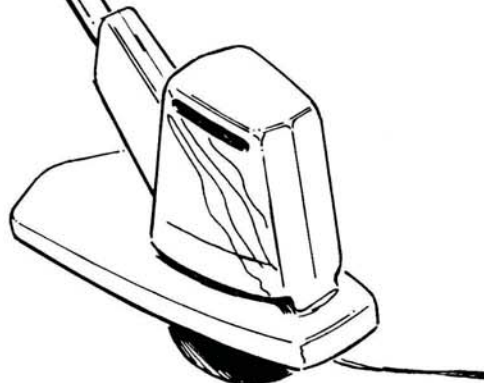
Price 35¢

PARTS LIST



HOMELITE[®]
ELECTRIC
STRING
TRIMMER

ST-40
and
ST-60



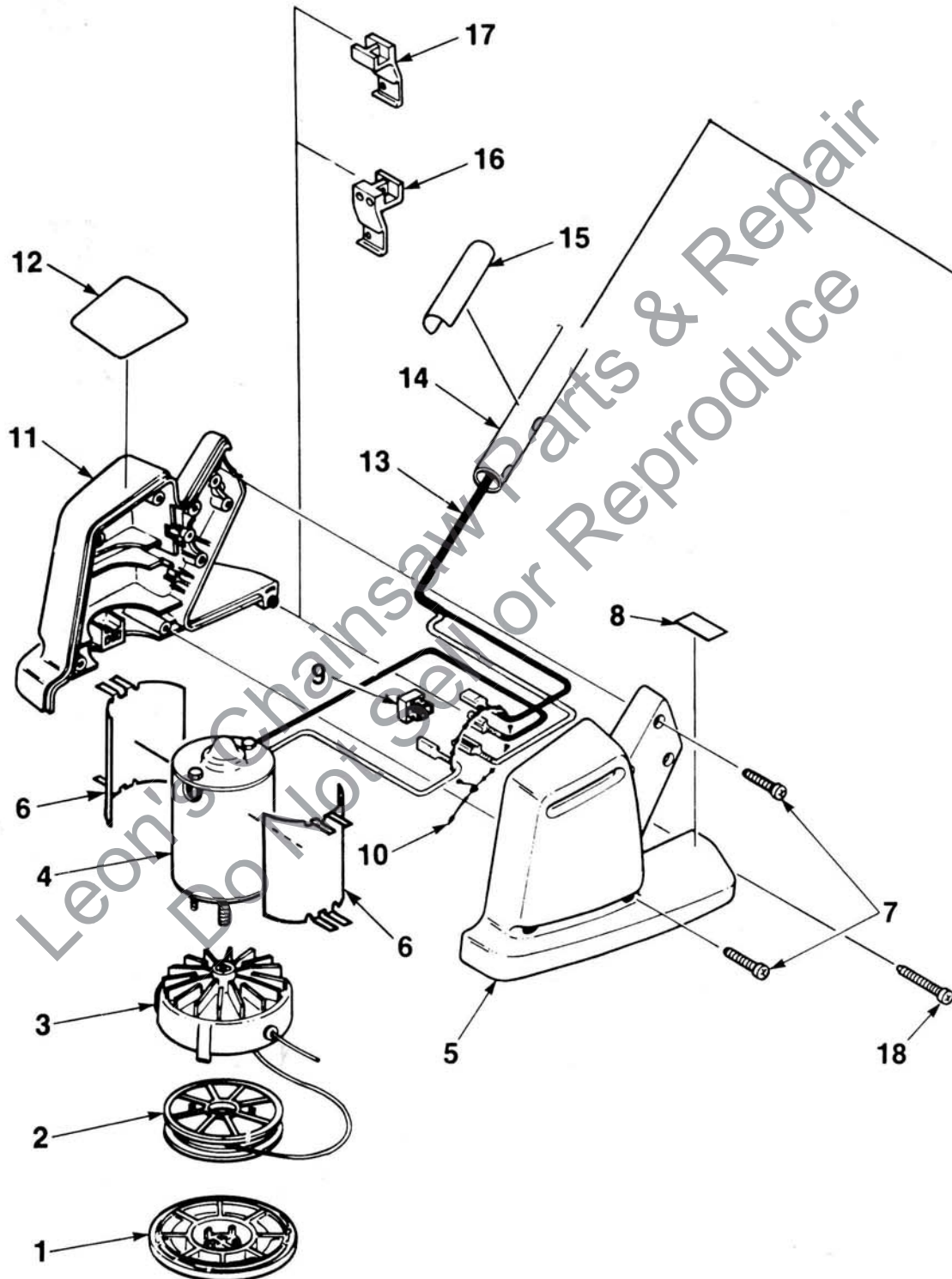
HOMELITE **TEXTRON**

Homelite Division of Textron Inc.

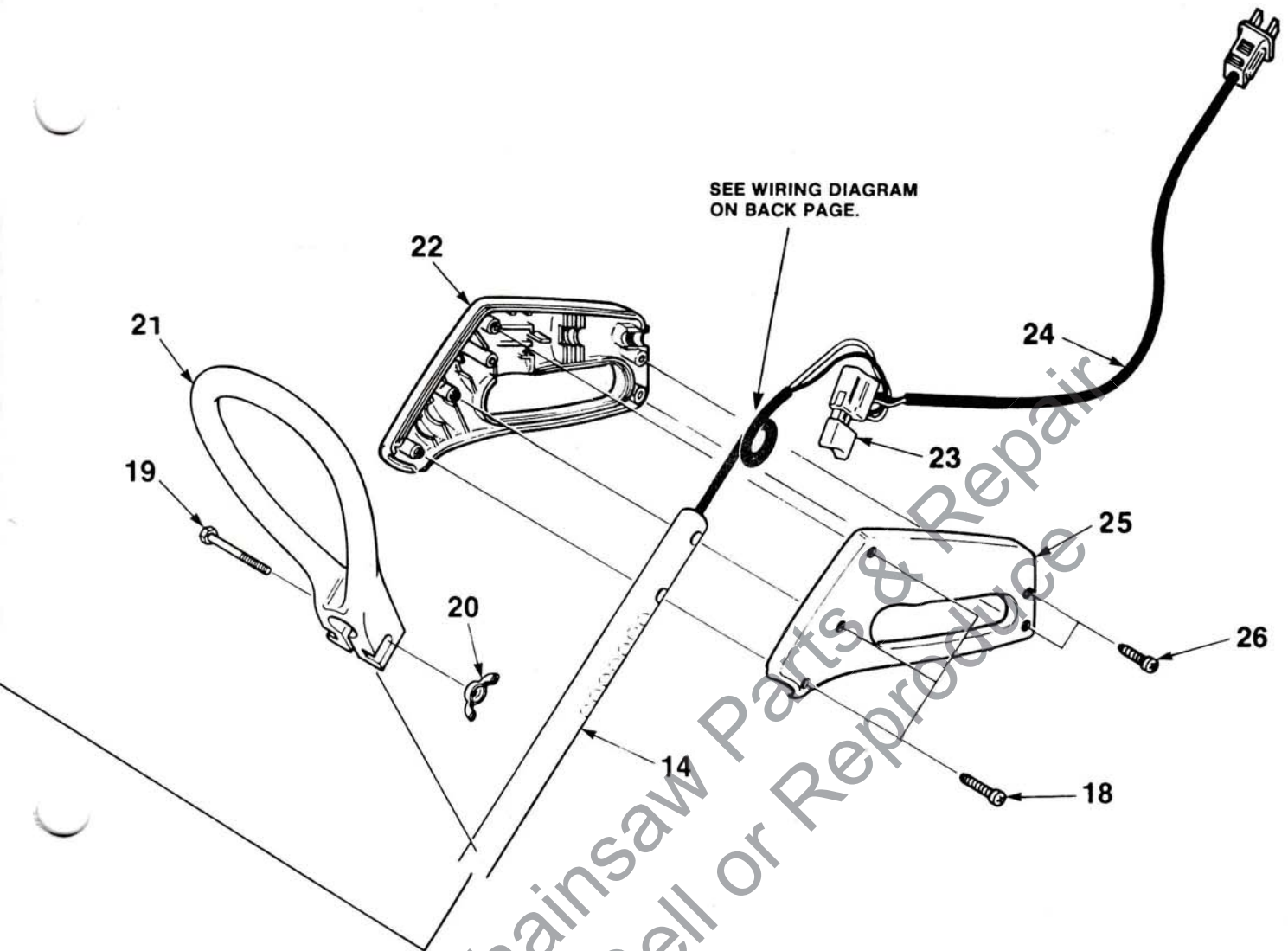
ST-40 and ST-60

ELECTRIC

STRING TRIMMER



ALWAYS FURNISH MODEL AND SERIAL NUMBER WHEN ORDERING PARTS.



NO.	DESCRIPTION	PART NO.	QTY.	NO.	DESCRIPTION	PART NO.	QTY.
1	RETAINER SPOOL	95137-1	1	13	CABLE- Electrical	A-95111	1
2	SPOOL & STRING	DA-95916-A	1	14	TUBING	95109	1
3	HEAD- String	A-95129	1	15	DECAL- Warning	95132-1	1
4	MOTOR- Electric 120V (ST-40)	95121	1	16	CUT-OFF- String (ST-40)	A-95127-A	1
	MOTOR- Electric 120V (ST-60)	95122	1	17	CUT-OFF- String (ST-60)	A-95115-A	1
5	HOUSING- Motor (left) (ST-40)	95155	1	18	SCREW- Thread forming (10 x 1")	82408	4
	HOUSING- Motor (left) (ST-60)	95107	1	19	SCREW- Cap hex hd. 1/4-20 x 2	80295	1
6	SHIM- Motor	96816	2	20	NUT- Wing washer face	93992	1
7	SCREW- Thread forming 10-16 x 3/4	94065	8	21	HANDLE- Front	95110	1
8	DECAL- Warning	95391	1	22	HANDLE- Right side	95102	1
9	RECTIFIER	95672	1	23	SWITCH	93013	1
10	CLAMP- Wire	50729	1	24	CORD SET	95118-A	1
11	HOUSING- Motor (right) (ST-40)	95154	1	25	HANDLE- Left side	95103	1
	HOUSING- Motor (right)	95106	1	26	SCREW- Thread forming (10-16 x 9/16)	95198	2
12	DECAL (ST-40)	95152	1				
	DECAL (ST-60)	95153	1				

ACCESSORIES:

94305 POWER CORD (50')

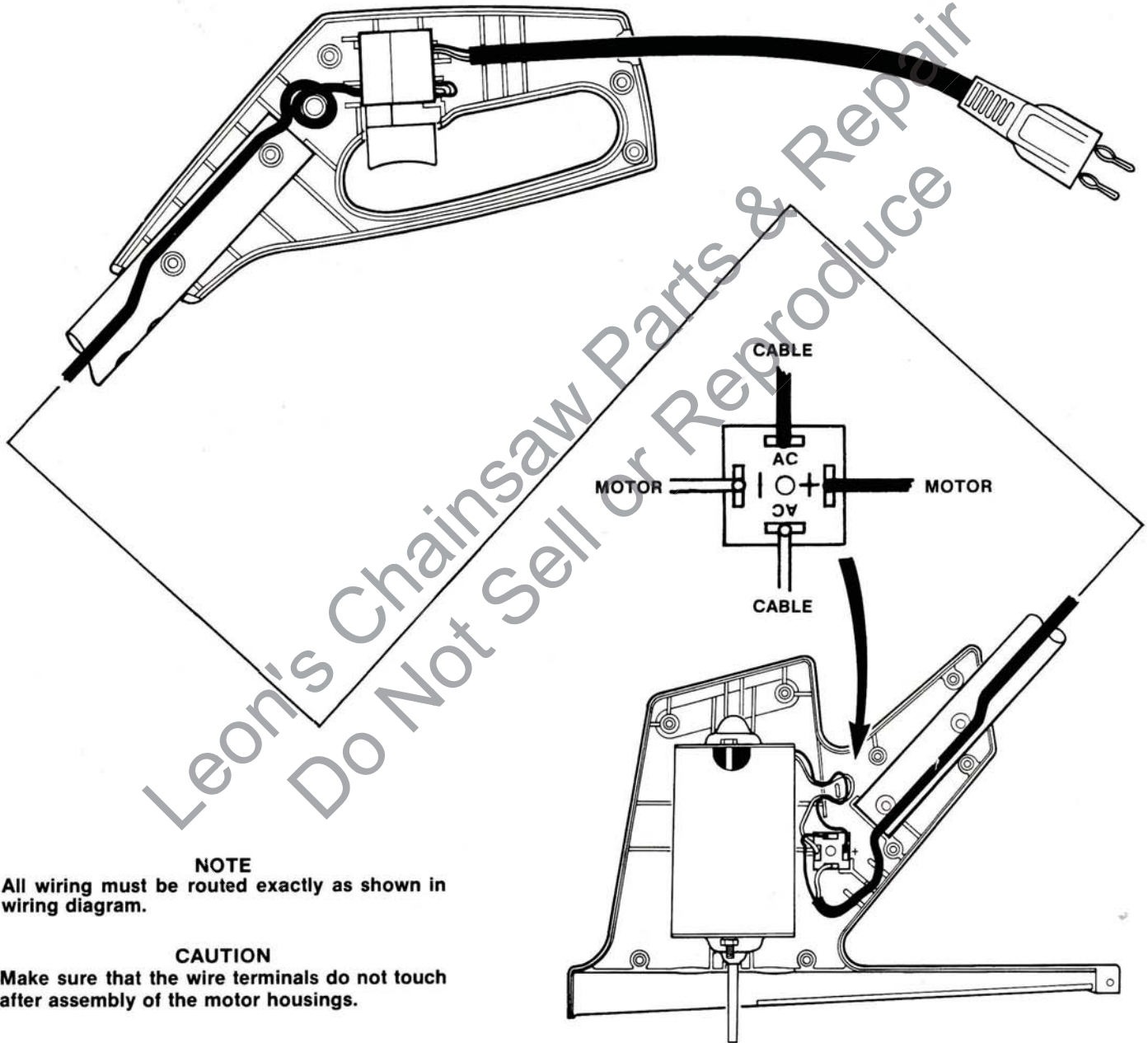
TOOLS:

17634 TOOL- Head removal

ALWAYS FURNISH MODEL AND SERIAL NUMBER WHEN ORDERING PARTS.

ST-40 and ST-60 ELECTRIC STRING TRIMMER

WIRING DIAGRAM



HOMELITE **TEXTRON**

Homelite Division of Textron Inc.