

REVISION 1
PART NO. 17509
Printed in U.S.A.
Price 35¢

parts list

HOMELITE®
ST-20

**ELECTRIC
STRING TRIMMER**

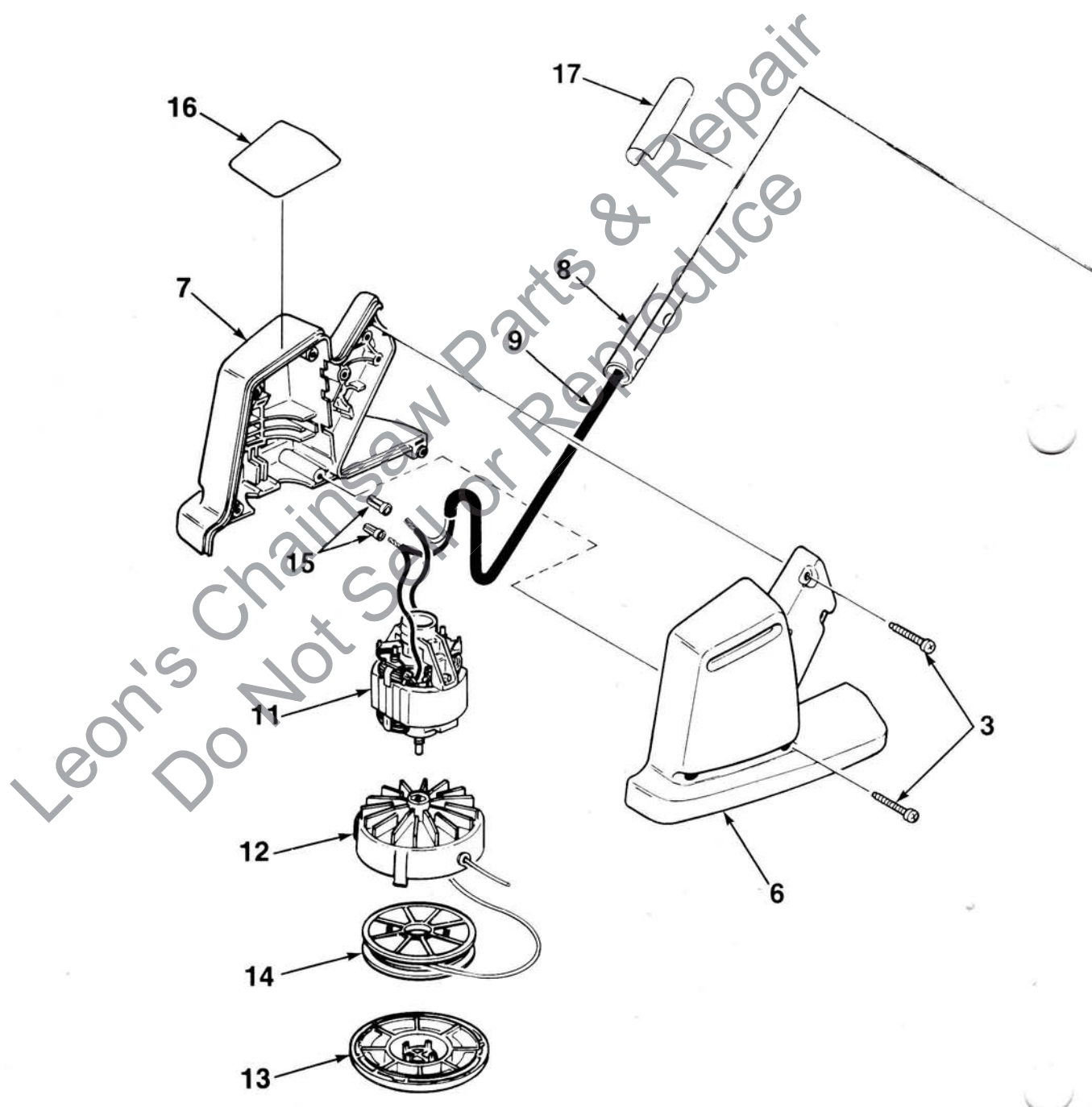


HOMELITE **TEXTRON**

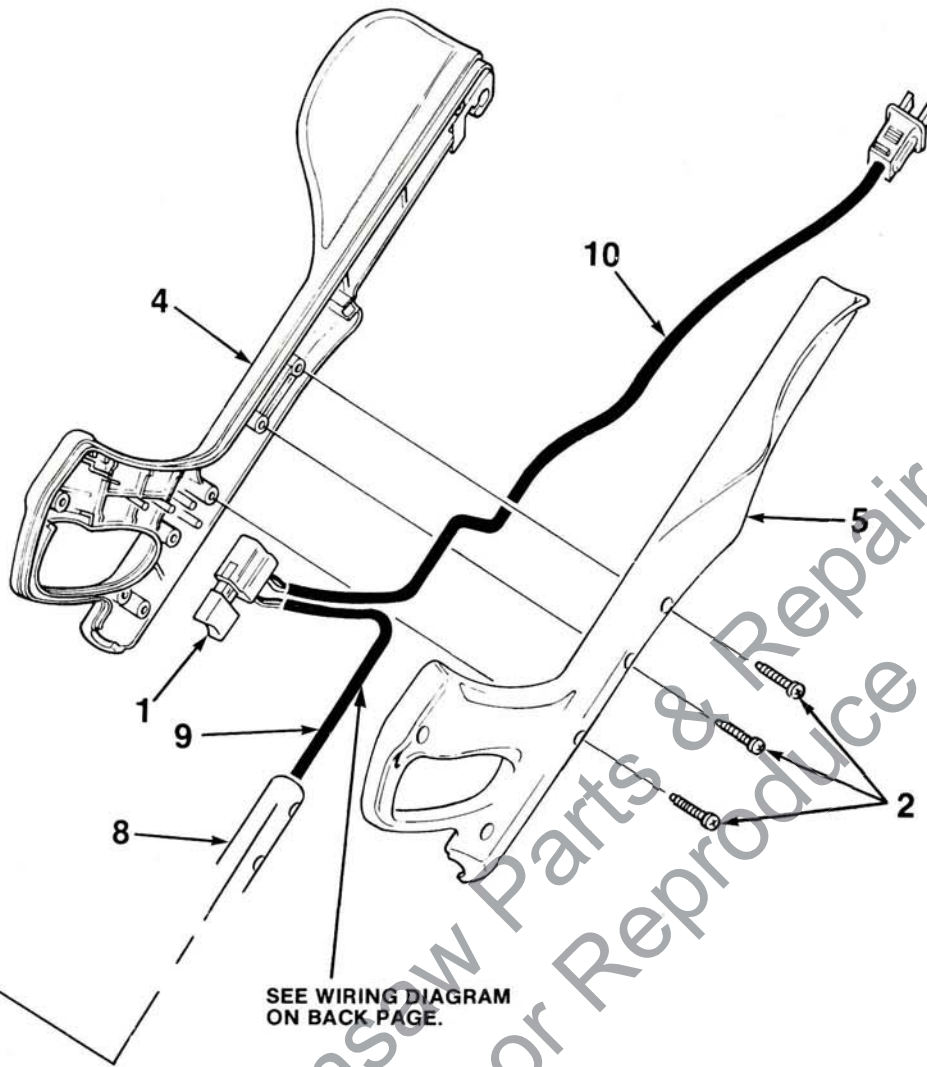
Homelite Division of Textron Inc.

ST-20

ELECTRIC
STRING TRIMMER



ALWAYS FURNISH MODEL AND SERIAL NUMBER WHEN ORDERING PARTS.



SEE WIRING DIAGRAM
ON BACK PAGE.

NO.	DESCRIPTION	PART NO.	QTY.	NO.	DESCRIPTION	PART NO.	QTY.
1	SWITCH	93013	1	11	MOTOR- Electric 120V	95120-A	1
2	SCREW- Thread forming 10-16 x 9/16	93243	7	12	HEAD- String	A-95128-B	1
3	SCREW- Thread forming 10-16 x 3/4	94065	8	13	RETAINER- Spool	95138-A	1
4	HANDLE- Right side	95100	1	14	SPOOL & STRING	DA-95159-B	1
5	HANDLE- Left side	95101	1		Includes:		
6	HOUSING- Motor (left)	A-95104-A	1		KIT- Slide & Spring (not shown)	A-96587	1
7	HOUSING- Motor (right)	95105-A	1	15	CONNECTOR- Wire	95161	2
8	TUBING	95108	1	16	DECAL	95135	1
9	CABLE- Electrical	95112	1	17	DECAL- Warning	95132-1	1
10	CORD SET	95119-A	1				

ACCESSORIES:

94305 Power Cord (50')

TOOLS:

17634 TOOL- Head removal

ALWAYS FURNISH MODEL AND SERIAL NUMBER WHEN ORDERING PARTS.

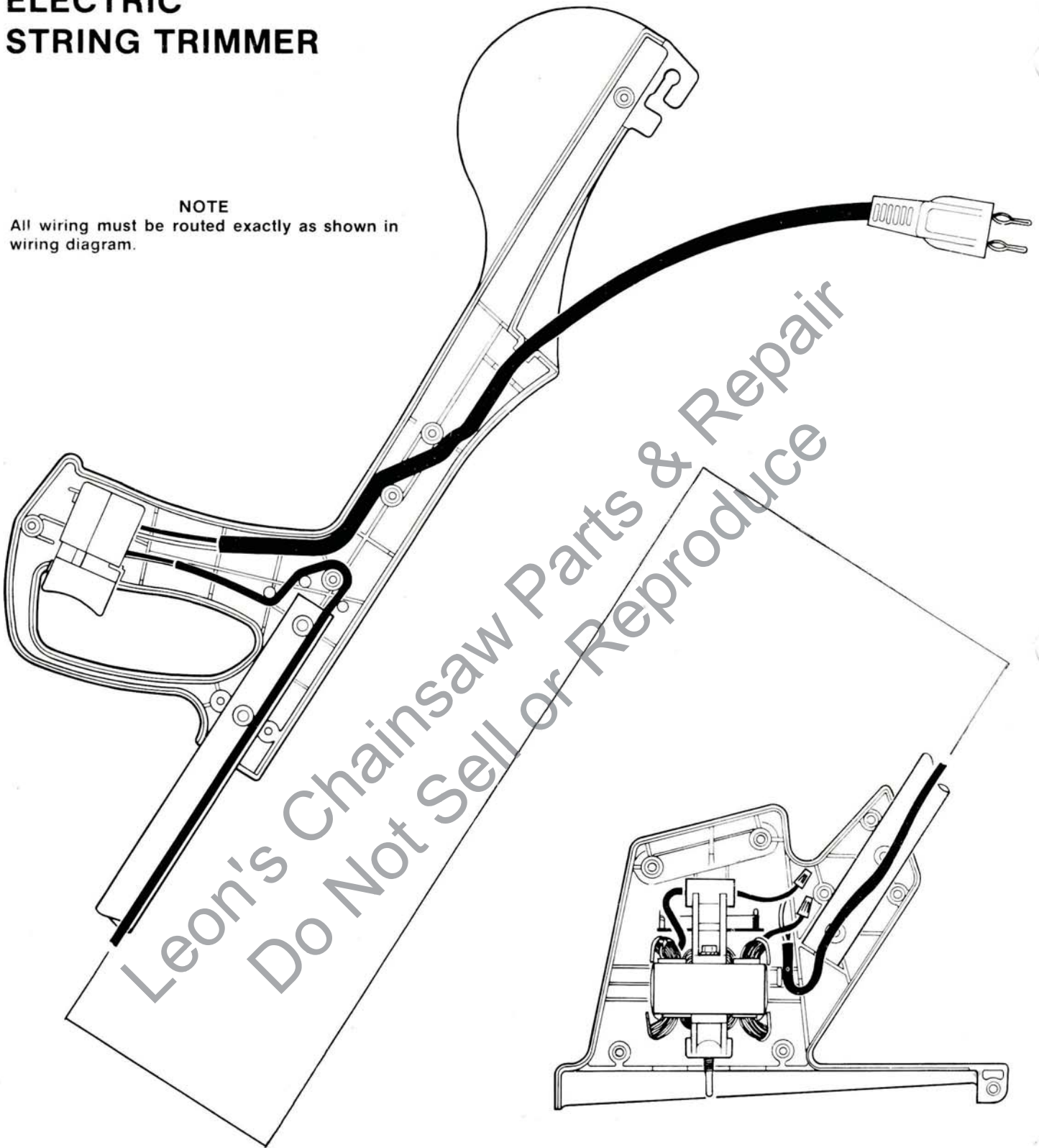
ST-20

ELECTRIC STRING TRIMMER

WIRING DIAGRAM

NOTE

All wiring must be routed exactly as shown in wiring diagram.



HOMELITE TEXTRON

Homelite Division of Textron Inc.