

HOMELITE[®]
JACOBSEN

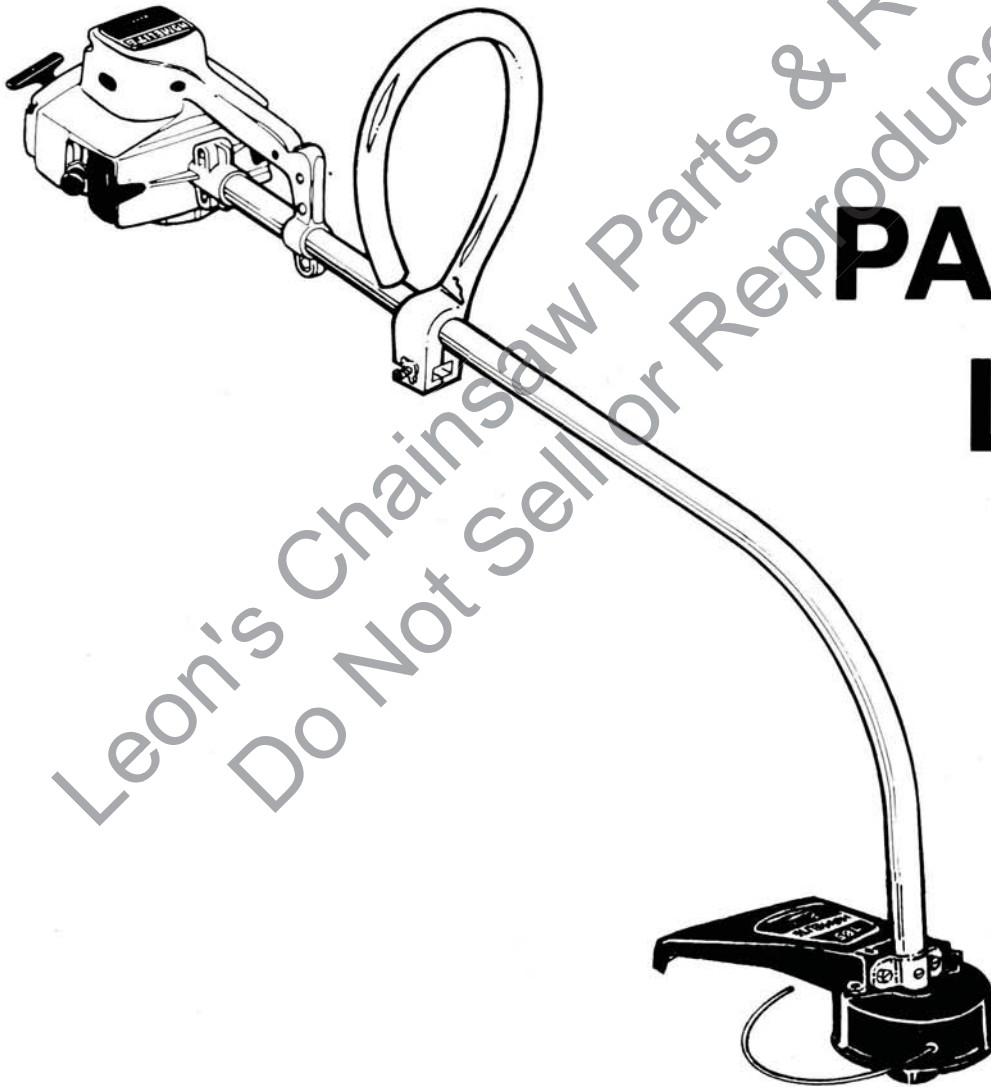
PART NO. 17877

Printed in U.S.A.

Price 35¢

165 (UT-20536)

STRING TRIMMER



PARTS LIST

HOMELITE **TEXTRON**

Homelite Division of Textron Inc.

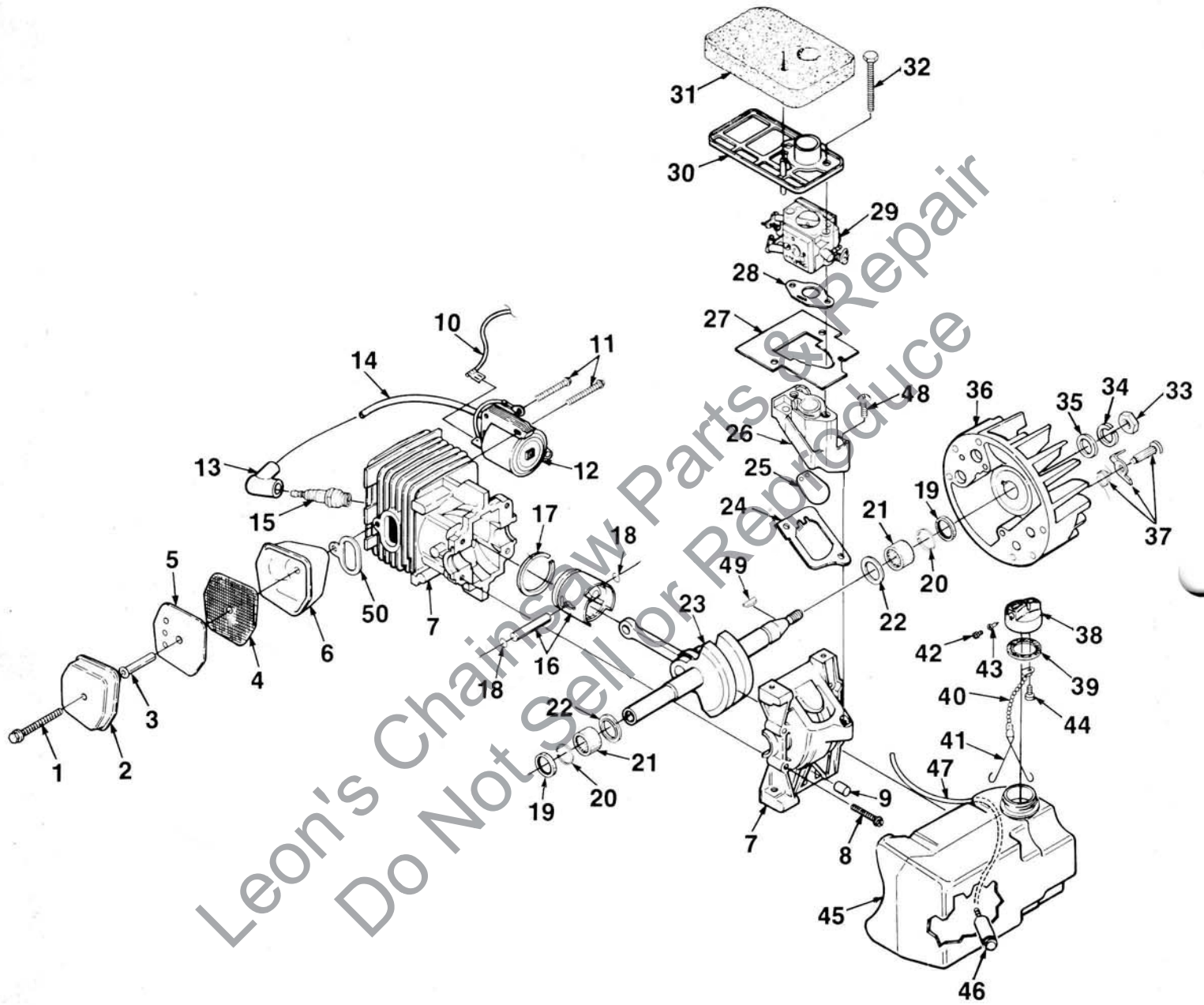
FIGURE 1

NO.	DESCRIPTION	PART NO.	QTY.	NO.	DESCRIPTION	PART NO.	QTY.
	MUFFLER- Assembly (Complete)	A-97621-A	1	26	SPACER- Carburetor	A-97571	1
	Includes:			27	BAFFLE- Air	94403-B	1
1	SCREW	93460	1	28	GASKET- Carburetor	93505-B	1
2	CAP- Muffler	97634	1	29	CARBURETOR- Zama	A-97971	1
3	SPACER- Muffler	93983-08	1		CARBURETOR- Walbro	A-97972	1
4	SCREEN- Spark	93991-A	1	30	SUPPORT- Air filter	94457-A	1
5	BAFFLE- Muffler	48161-A	1	31	FILTER- Air	94456	1
6	BODY- Muffler	93986	1	32	SCREW- Hex 10-24 x 1 3/4	88056	2
7	CYLINDER & CRANKCASE	A-97792-A	1	33	NUT- Rotor 5/16-24	81117	1
	Includes:			34	WASHER- Lock	83002	1
8	SCREW 8-32 x 1	88044	4	35	WASHER	84065	1
9	BUMPER- Rubber	97950	1	36	ROTOR & STARTER PAWL	A-95007	1
10	LEAD- Electrical (to stop button)				Includes:		
	(See Fig. 2, index #11)	A-97928	1	37	STARTER PAWL KIT	A-70285-D	1
11	SCREW- Hex 8-32 x 3/4	82248	2	38	CAP- Fuel	A-96957-A	1
12	MODULE- Ignition	94711-A	1		Includes:		
	Includes:			39	GASKET- Filler cap	94494	1
13	TERMINAL- Hi-tension	A-33055	1	40	BEAD- Chain	69502	1
14	LEAD- High tension	69326	1	41	RETAINER	96535	1
15	SPARK PLUG (DJ7Y)	96169-S	1	42	FILTER- Fuel cap	69454	1
16	PISTON & PIN ASSEMBLY	A-69393	1	43	VALVE	69451	1
	Includes:			44	SCREW- Pan hd.	82256-A	1
17	PISTON RING (See Note 1)	69312	1	45	TANK- Fuel	A-94462-D	1
	PISTON RING (Alternate source)	69312-1A	1		Includes:		
18	RING- Piston pin retaining	65261	2	46	FILTER- Fuel	96639-1	1
19	SEAL- Main	94638	2	47	LINE- Fuel	70310-40	1
20	SPACER- Seal	68514	2	48	SCREW- Mach. Pan hd.	93934	2
21	NEEDLE- Bearing	12530	2	49	KEY- Woodruff	69250	1
22	WASHER- Thrust	95492	2	50	GASKET- Muffler	93801	1
23	CRANKSHAFT ASSEMBLY	A-97954	1				
24	GASKET	93884-A	1				
25	REED	95983	1				

NOTE 1: Use 96935 Piston Ring for units with Pinless Pistons.

165
STRING TRIMMERS

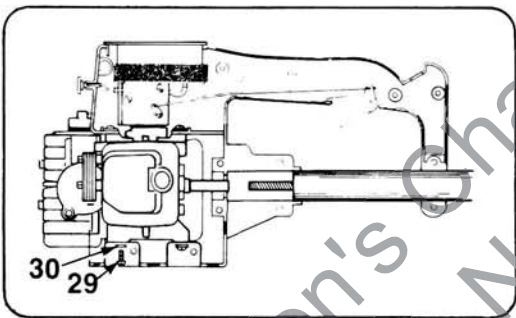
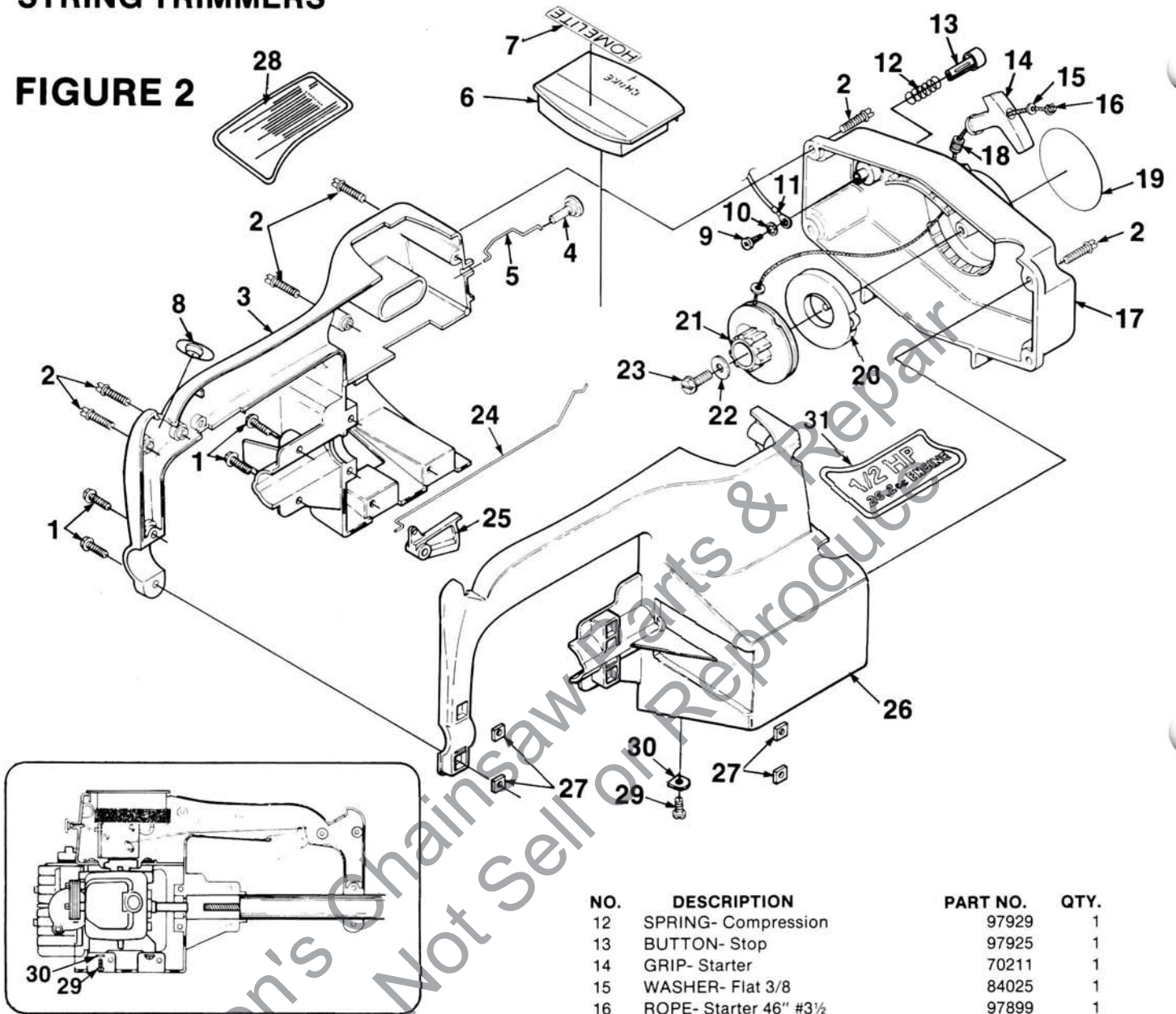
FIGURE 1



ALWAYS FURNISH MODEL AND SERIAL NUMBERS WHEN ORDERING PARTS.

**165
STRING TRIMMERS**

FIGURE 2



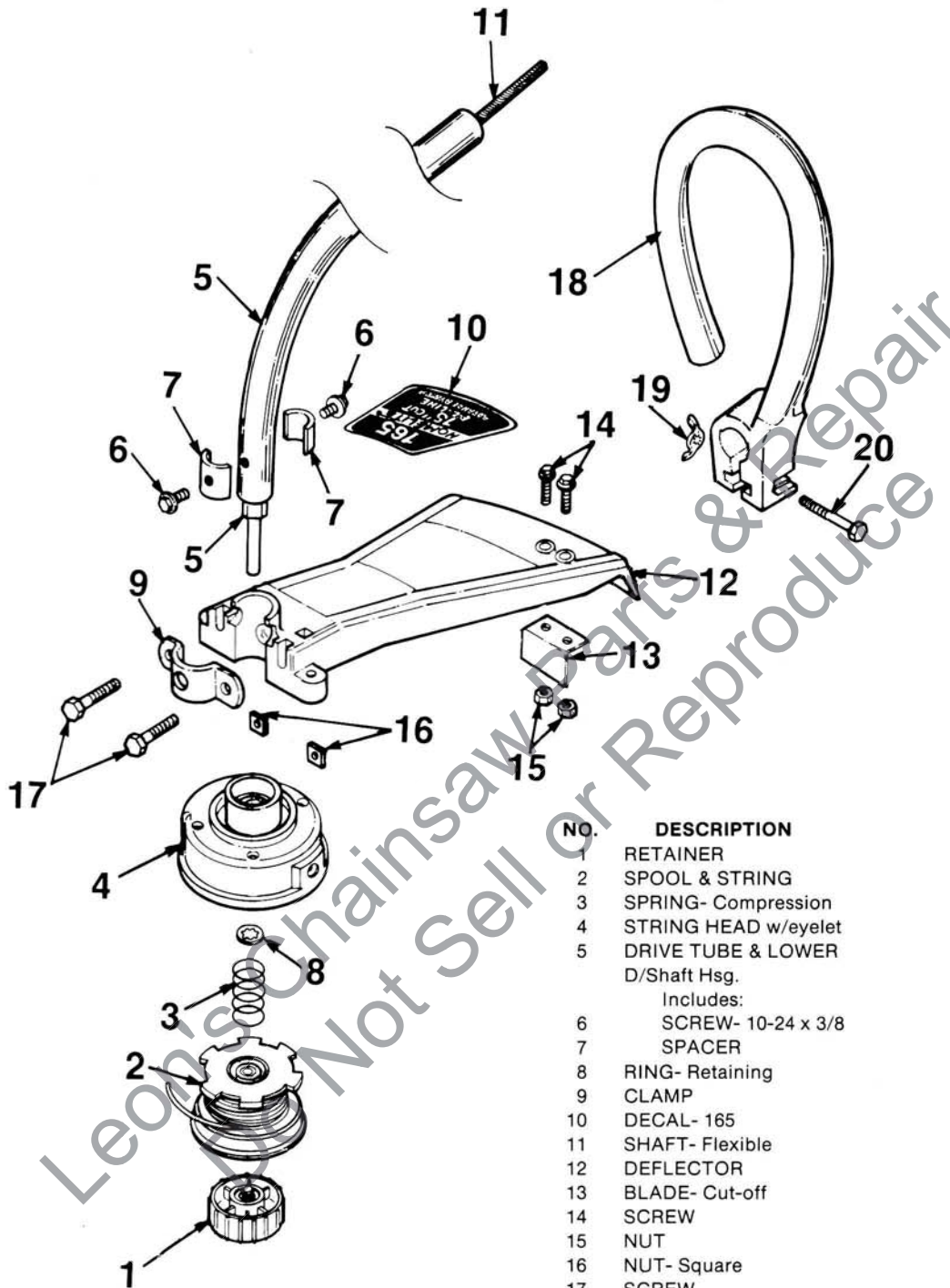
NO.	DESCRIPTION	PART NO.	QTY.
1	SCREW- 10-32 x 3/4 hex hd.	82220	4
2	SCREW	82368	12
3	ENGINE HOUSING (right) Includes:	A-97997	1
4	BUTTON- Choke	97995	1
5	ROD- Choke	97996	1
6	COVER- Filter Includes:	A-94489	1
7	DECAL	78290	1
8	PLUG- Unthreaded	96591	1
9	SCREW- Thd. forming	93923	1
10	WASHER- Lock 5/16	83004	1
11	LEAD- Electrical (see Fig. 1, index # 10)	A-97928	1

NO.	DESCRIPTION	PART NO.	QTY.
12	SPRING- Compression	97929	1
13	BUTTON- Stop	97925	1
14	GRIP- Starter	70211	1
15	WASHER- Flat 3/8	84025	1
16	ROPE- Starter 46" #3 1/2	97899	1
17	HOUSING- Starter Includes:	A-98025	1
18	BUSHING- Starter housing	A-97796	1
19	DECAL- 165	98160	1
20	SPRING- Rewind	A-97908	1
21	PULLEY- Starter	97768	1
22	WASHER	94062	1
23	SCREW	70771	1
24	ROD- Throttle	94435-A	1
25	TRIGGER	94452-A	1
26	HOUSING- Engine (left)	97570	1
27	NUT	97574	4
28	DECAL- Starter instruction	98163	1
29	SCREW- Torx	96987	4
30	WASHER	96984	4
31	DECAL- 1/2 HP	98166	1

ALWAYS FURNISH MODEL AND SERIAL NUMBERS WHEN ORDERING PARTS.

STRING TRIMMERS

FIGURE 3

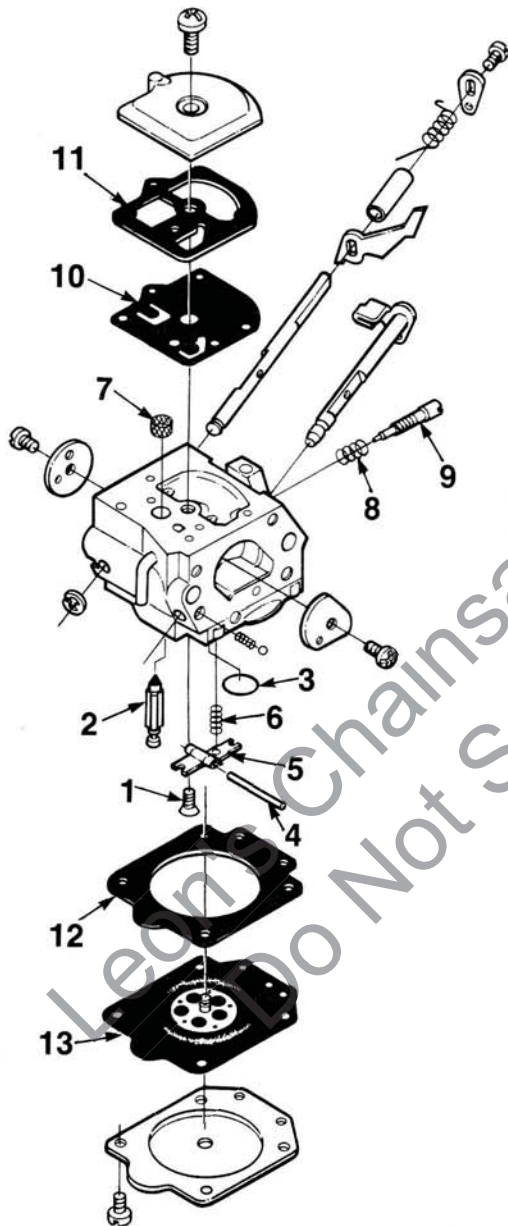


NO.	DESCRIPTION	PART NO.	QTY.
1	RETAINER	A-97910	1
2	SPOOL & STRING	DA-97951	1
3	SPRING- Compression	97920	1
4	STRING HEAD w/eyelet	A-98214	1
5	DRIVE TUBE & LOWER D/Shaft Hsg. Includes:	A-98622	1
6	SCREW- 10-24 x 3/8	88077	2
7	SPACER	98147	2
8	RING- Retaining	97938	1
9	CLAMP	97363-A	1
10	DECAL- 165	98143	1
11	SHAFT- Flexible	94406-A	1
12	DEFLECTOR	97362-B	1
13	BLADE- Cut-off	98169	1
14	SCREW	82220	2
15	NUT	81206	2
16	NUT- Square	95213	2
17	SCREW	82501	2
18	HANDLE- Front	A-98525	1
19	NUT- Wing	93992	1
20	SCREW- Cap hd.	80295	1

ALWAYS FURNISH MODEL AND SERIAL NUMBERS WHEN ORDERING PARTS.

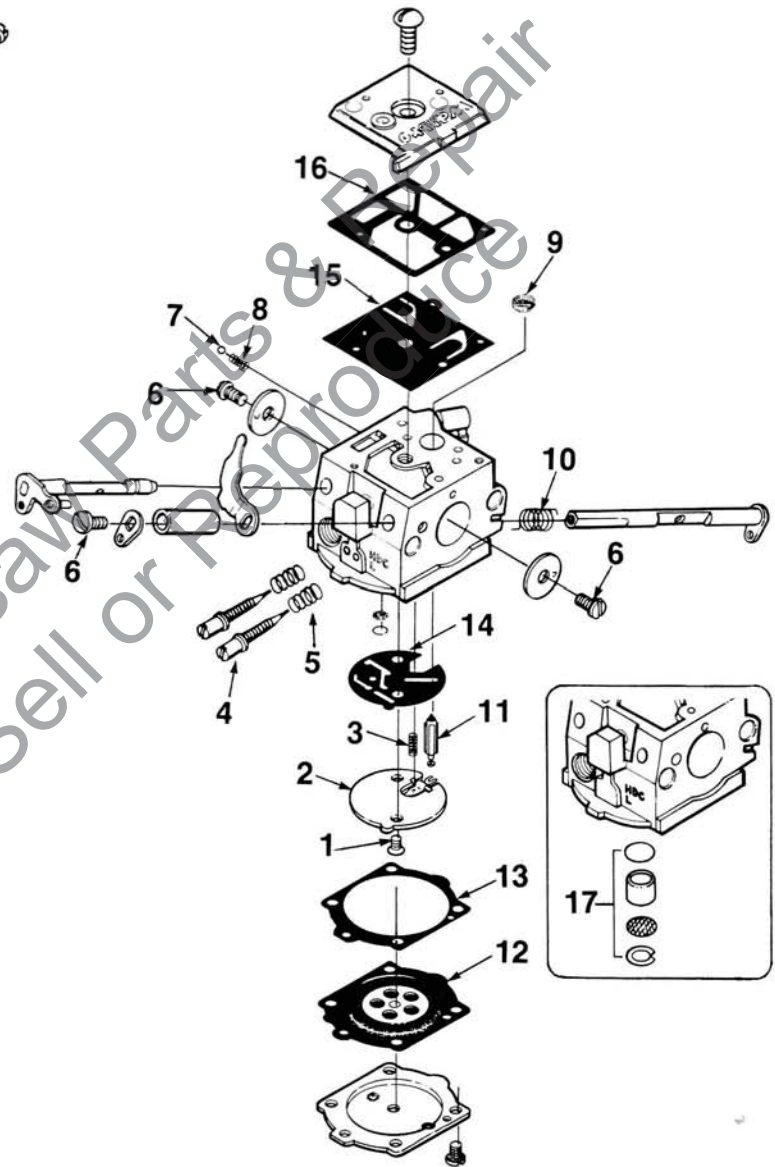
CARBURETORS

ZAMA (C2S-H9)
A-97971



- KIT- Repair 98016 (1-13)
- KIT- Gasket Diaphragm 98017 (10-13)
- NEEDLE- Inlet 98015 (#2)

WALBRO (HDC-75)
A-97972



- KIT- Repair 98014 (1-16)
- KIT- Gasket Diaphragm 93754 (12-16)
- KIT- Check valve 93910-B (17)
- VALVE- Inlet needle 64229 (#11)

ALWAYS FURNISH MODEL AND SERIAL NUMBERS WHEN ORDERING PARTS.

ACCESSORIES & TOOLS

DA-97951	REPLACEMENT (Spool & String)
DA-97952-A	100' FT. LINE (only)
24823	SILASTIC
22486	SHIM (015")
A-24747-A	ROTOR PULLER
	Includes:
81196	NUT
80288	BOLT
23488-C	COMPOUND- Thread locking
70310-99	LINE- Fuel (10')
98052	STARTER CORD (250' Reel #3 1/2)
JA-31316-4	IGNITION TEST, SPARK PLUG
17789	CARBURETOR REPAIR TOOL KIT
17193	MULTI-PURPOSE GREASE
24982-01	TORX DRIVER BIT (1/4" shank)
24982-02	TORX DRIVER BIT (5/16 shank)

HOMELITE DIVISION OF TEXTRON INC.

P.O. Box 7047
14401 Carowinds Boulevard
Charlotte, N.C. 28217

Overseas Offices

Homelite Division of Textron

Korenaarstraat 1
2153 BM Nieuw Vennep
The Netherlands

Homelite Division of Textron

Pacific Limited
P.O. Box 209
Blackburn, 3130
Victoria, Australia

Leon's Chainsaw Parts & Repair
Do Not Sell Or Reproduce

05821RY

HOMELITE **TEXTRON**

Homelite Division of Textron Inc.