

HOMELITE®

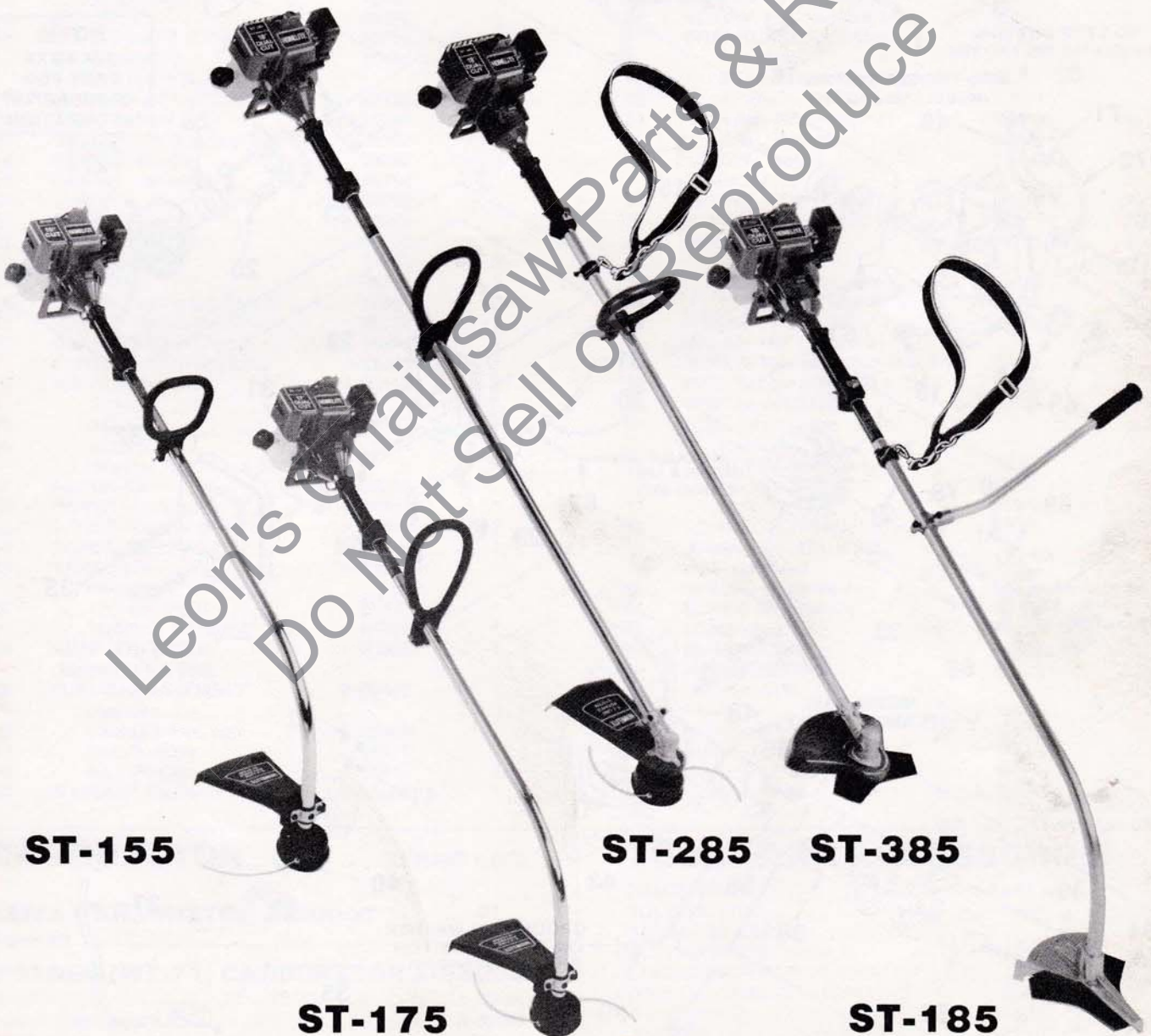
STRING TRIMMERS

PARTS LIST

FOR

MODELS

ST-155/ST-175/ST-185/ST-285/& ST-385



ST-155

ST-175

ST-285

ST-385

ST-185

ENGINE

FIGURE 1 ILLUSTRATES PARTS FROM ALL FIVE STRING TRIMMERS. THEREFORE, SOME PARTS APPLY ONLY TO SPECIFIC MODELS. WHERE APPLICABLE, SPECIFIC MODEL NUMBERS ARE NOTED ON THIS PAGE AND IN PARTS LIST—FIGURE 1 ON PAGE 3.

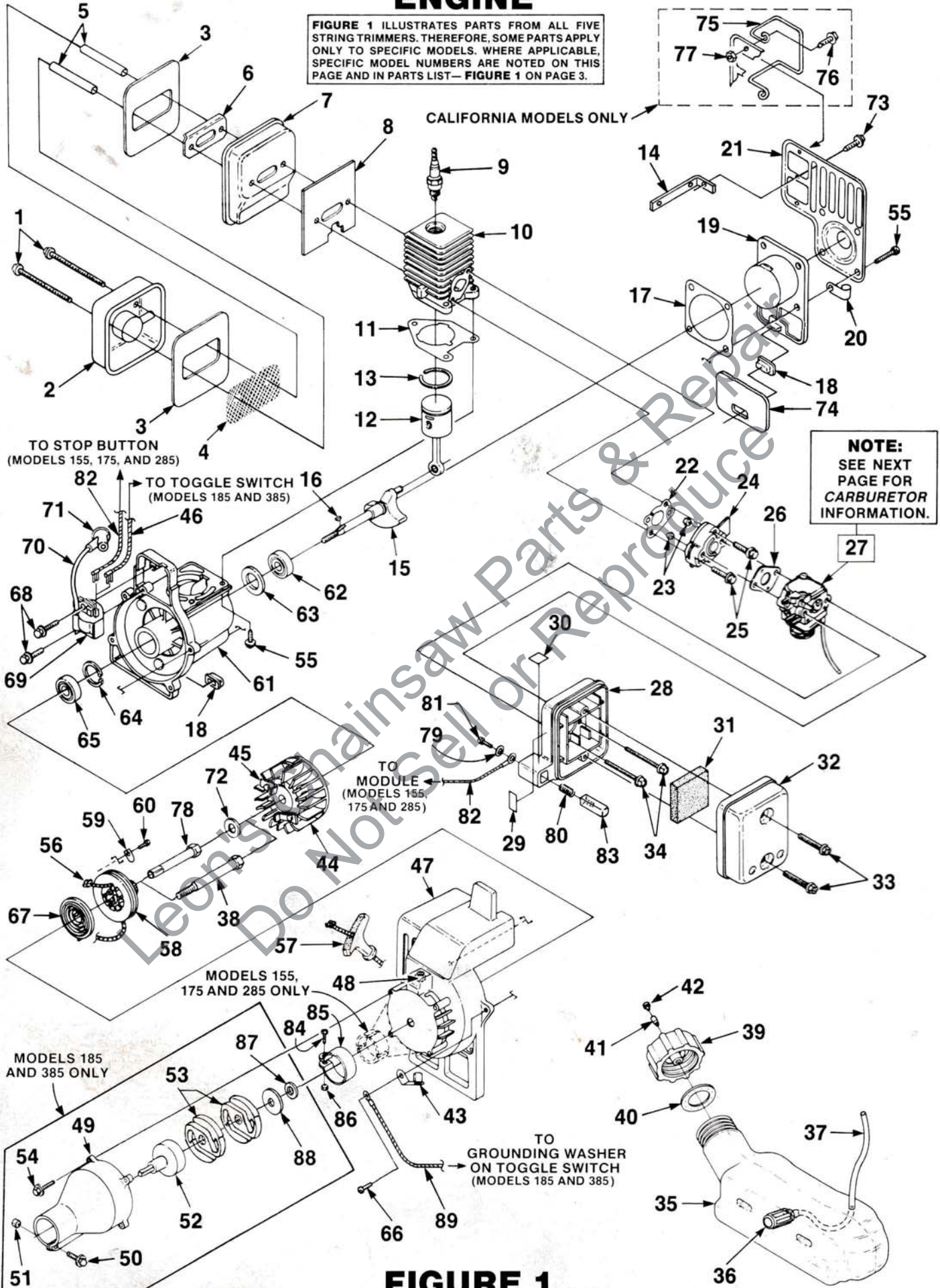


FIGURE 1

PARTS LIST - FIGURE 1

| NO. | DESCRIPTION | PART NO. | QTY. | NO. | DESCRIPTION | PART NO. | QTY. |
|-----|----------------------------|----------|------|-----|--------------------------------|-----------|------|
| | MUFFLER ASSEMBLY | A-98785 | 1 | 44 | ROTOR | A-95007 | 1 |
| | Includes: | | | | Includes: | | |
| 1 | SCREW (10-24 x 2 1/2) | 88060 | 2 | 45 | KIT-Starter pawl | A-70285-D | 1 |
| 2 | COVER-Muffler | A-98780 | 1 | 46 | LEAD-Electrical | A-98918 | 1 |
| 3 | BAFFLE-Muffler | 98782 | 2 | 47 | HOUSING-Engine | A-00105 | 1 |
| 4 | SCREEN-Spark | 98784 | 1 | | (Models 185 & 385) | | |
| 5 | SPACER-Muffler | 98860 | 2 | | HOUSING-Engine | A-00106 | 1 |
| 6 | PLATE-Reinforcing | 98783 | 1 | | (Models 155, 175, & 285) | | |
| 7 | BODY-Muffler | 98781 | 1 | | Includes: | | |
| 8 | GASKET-Muffler | 98786 | 1 | 48 | BUSHING | A-97796 | 1 |
| 9 | SPARK PLUG (DJ7Y) | 96169-S | 1 | 49 | TUBE ADAPTER | A-98931 | 1 |
| 10 | CYLINDER | A-00108 | 1 | | Includes: | | |
| | Includes: | | | 50 | SCREW (10-24 x 1.250) | 88054 | 1 |
| 11 | CYLINDER- Gasket | 98764 | 1 | 51 | NUT (10-24) | 81208 | 1 |
| 12 | PISTON & ROD ASSEMBLY | A-00092 | 1 | 52 | CONNECTOR & DRUM | A-00252 | 1 |
| | (Models 155, 175, & 285) | | | 53 | CLUTCH | 00242 | 2 |
| | PISTON & ROD ASSEMBLY | A-00256 | 1 | 54 | SCREW (10-24 x .875) | 88052 | 4 |
| | (Model 185) | | | 55 | SCREW (10-24 x .750) | 82508 | 7 |
| | PISTON & ROD ASSEMBLY | A-00239 | 1 | 56 | ROPE-Starter | 97899 | 1 |
| | (Model 385) | | | 57 | GRIP-Starter | 70211 | 1 |
| | Includes: | | | 58 | PULLEY-Starter | 98770 | 1 |
| 13 | Ring-Piston | 96935 | 1 | 59 | BRACKET-Retaining | 98791 | 1 |
| 14 | BRACKET | 00179 | 1 | 60 | SCREW- Plastite (10 x 1/2) | 82511 | 1 |
| 15 | CRANKSHAFT (Model 155) | 98758-1 | 1 | 61 | CRANKCASE ASSEMBLY | A-00107 | 1 |
| | CRANKSHAFT | 98758-2 | 1 | | Includes: | | |
| | (Models 175, 185, & 285) | | | 62 | BEARING-Ball | 98797 | 1 |
| | CRANKSHAFT (Model 385) | 98758-3 | 1 | 63 | SEAL | 98800 | 1 |
| 16 | KEY-Woodruff | 69250 | 1 | 64 | RING-Retaining | 98799 | 1 |
| 17 | GASKET-Crankcase cover | 98767 | 1 | 65 | BALL-Bearing | 98798 | 1 |
| 18 | BUMPER-Rubber | 98792 | 3 | 66 | SCREW- Taptite | 82518 | 4 |
| 19 | COVER-Crankcase | 98754 | 1 | | (10-24 x .875) | | |
| 20 | CLAMP | 98752 | 1 | 67 | SPRING & CONTAINER | A-98773 | 1 |
| 21 | SHIELD | 98934 | 1 | 68 | SCREW- Taptite (8-32 x 1) | 82509 | 2 |
| 22 | GASKET-Heat dam | 98765 | 1 | 69 | MODULE-Ignition | 94711-A | 1 |
| 23 | NUT (10-24) | 81208 | 2 | | Includes: | | |
| 24 | HEAT DAM | 98768 | 1 | 70 | LEAD-High tension | 69326 | 1 |
| 25 | SCREW-Taptite (10-24 x 1) | 82507 | 2 | 71 | TERMINAL- High tension | A-33055 | 1 |
| 26 | GASKET-Carburetor | 98766 | 1 | 72 | WASHER-Flat (1/32) | 84065 | 1 |
| 27 | CARBURETOR- (Zama) | A-00047 | 1 | | (Models 155, 175 & 285) | | |
| | CARBURETOR- (Walbro) | A-98803 | 1 | 73 | SCREW- Hex sems (10-24 x .375) | 88077 | 1 |
| 28 | AIR FILTER BOX | A-00110 | 1 | 74 | PAD- Rubber (185, 285 & 385) | 00240 | 1 |
| | Includes: | | | 75 | WIRE GUARD KIT | A-00254 | 1 |
| 29 | DECAL | 98942 | 1 | | (California Models Only) | | |
| 30 | DECAL | 98943 | 1 | | Includes: | | |
| | (Models 155, 175, & 285) | | | 76 | SCREW-Hex sems | 88049 | 2 |
| 31 | FILTER-Air | D-98760 | 1 | | (10-24 x 1/2) | | |
| 32 | COVER- Air filter | 98761 | 1 | 77 | NUT- (10-24) | 81208 | 2 |
| 33 | SCREW- Plastite (8 x .750) | 82368 | 2 | 78 | CONNECTOR-Drive | 98795 | 1 |
| 34 | SCREW (10-24 x 2.250) | 82510 | 2 | | (Models 155, 175, & 285) | | |
| 35 | TANK-Fuel | A-00098 | 1 | 79 | WASHER-Lock | 83004 | 1 |
| | Includes: | | | 80 | SPRING-Compression | 95020 | 1 |
| 36 | FILTER- Fuel | 49422 | 1 | 81 | SCREW (#6 plastite) | 93923 | 1 |
| 37 | TUBING- Rubber 7" | 94772-24 | 1 | 82 | LEAD-Electrical | A-98809 | 1 |
| 38 | ADAPTER- Clutch | 98930 | 1 | 83 | BUTTON-Switch | 98769 | 1 |
| | (Models 185 & 385) | | | 84 | SCREW-Hex Sems | 88077 | 1 |
| 39 | FUEL CAP ASSEMBLY | A-00099 | 1 | | (10-24 x .375) | | |
| | Includes: | | | 85 | CLAMP | 98802 | 1 |
| 40 | GASKET-Fuel cap | 98805 | 1 | 86 | NUT-Square | 97574 | 1 |
| 41 | VALVE-Filter | 98819 | 1 | 87 | WASHER-Flat (3/8) | 84116 | 1 |
| 42 | FILTER-Cap | 98913 | 1 | 88 | WASHER-Flat | 98929 | 1 |
| 43 | BRACKET-Cable | A-98808 | 1 | 89 | LEAD-Ground | A-98919 | 1 |

CARBURETOR REPAIR KITS

ZAMA CARBURETOR A-00047

Repair Kit _____ A-00288

WALBRO (WT-71) CARBURETOR A-98803

Repair Kit _____ A-00286

Gasket/Diaphragm Kit _____ A-00285

Swivel Kit _____ A-00289

TOOLS AND ACCESSORIES

| DESCRIPTION | PART NO. |
|-------------------------------|------------|
| HOLDING TOOL | 00063 |
| (Models 185 & 385) | |
| MULTI-PURPOSE GREASE | 17193 |
| CARBURETOR REPAIR TOOL KIT | 17789 |
| THREAD LOCKING COMPOUND | 23488-C |
| PLASTIC SHIM (.125") | 24306 |
| IGNITION TEST SPARK PLUG | JA-31316-4 |
| RUBBER TUBING (10 Ft.) | 94772-99 |
| STARTER ROPE #3 1/2 (250 Ft.) | 98052 |
| TORX DRIVER BIT | 24982-01 |
| TORX BIT (for clutch drum) | 24982-03 |

MODELS ST-155 & ST-175

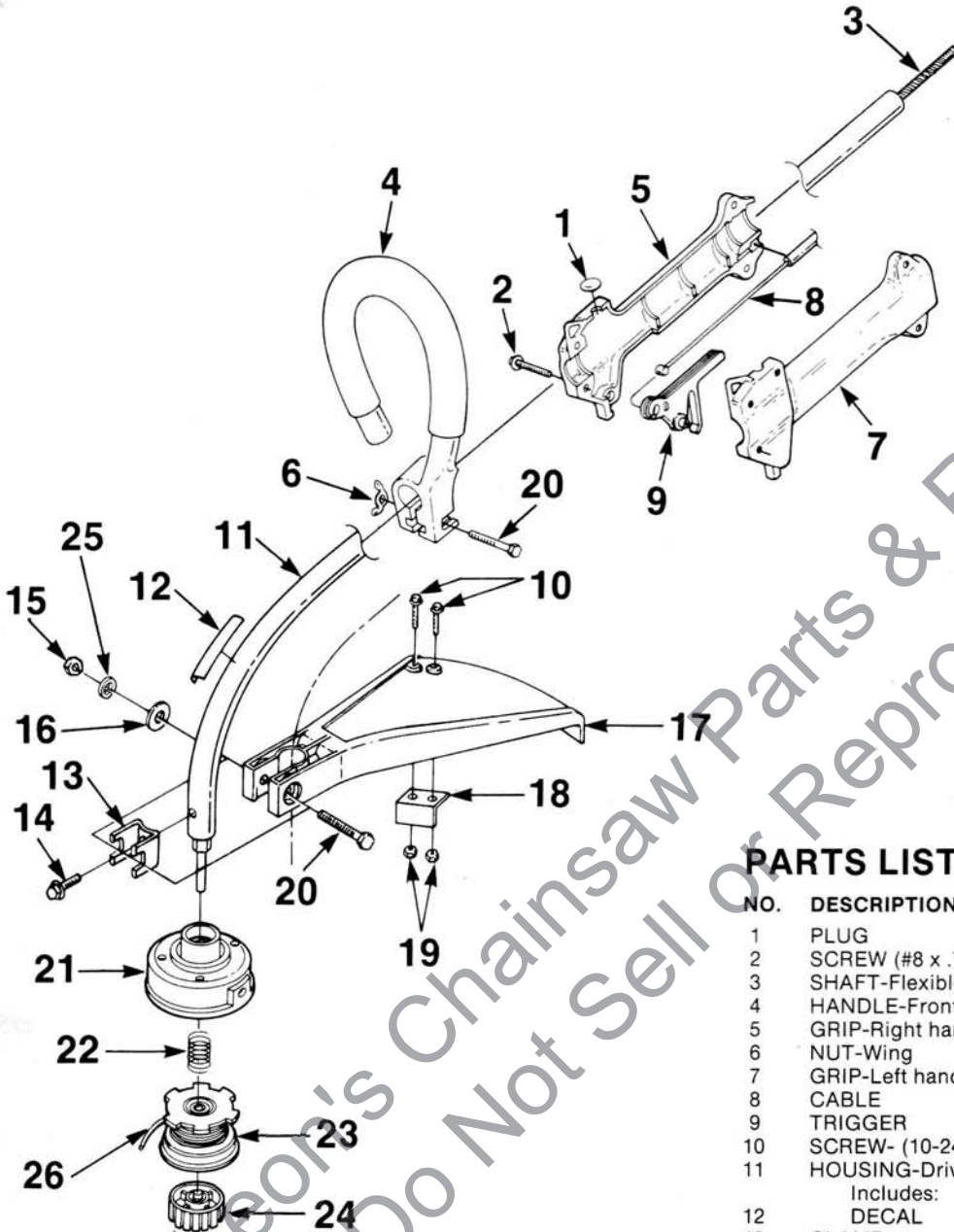
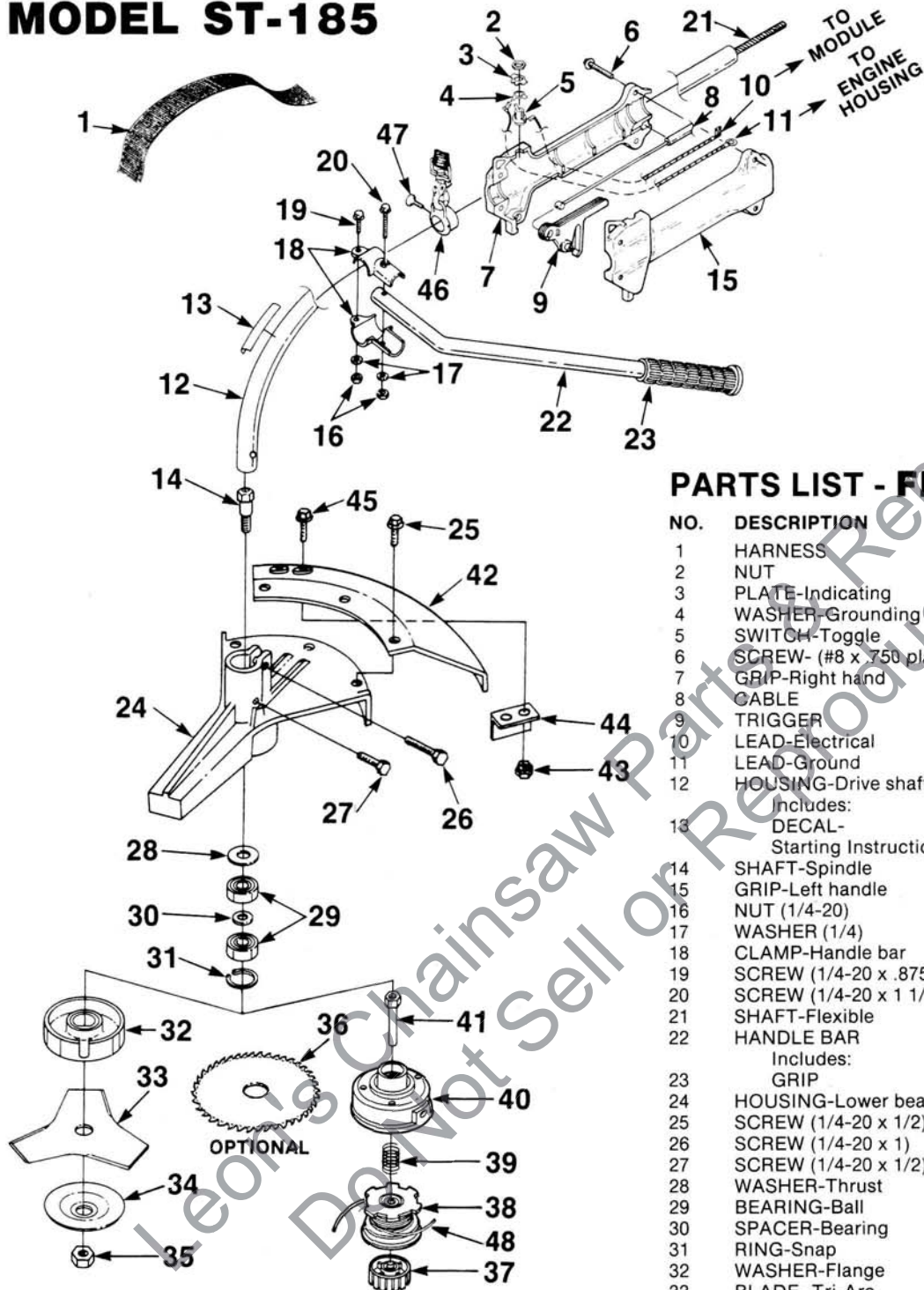


FIGURE 2

PARTS LIST - FIGURE 2

| NO. | DESCRIPTION | PART NO. | QTY. |
|-----------|--|------------|------|
| 1 | PLUG | 96591 | 1 |
| 2 | SCREW (#8 x .750 plastite) | 82368 | 5 |
| 3 | SHAFT-Flexible | 98816 | 1 |
| 4 | HANDLE-Front | A-98525 | 1 |
| 5 | GRIP-Right handle | 98794 | 1 |
| 6 | NUT-Wing | 93992 | 1 |
| 7 | GRIP-Left handle | 98793 | 1 |
| 8 | CABLE | 98807 | 1 |
| 9 | TRIGGER | 98772 | 1 |
| 10 | SCREW- (10-24 x .875) | 88052 | 2 |
| 11 | HOUSING-Drive shaft | A-00104 | 1 |
| Includes: | | | |
| 12 | DECAL | 98923 | 1 |
| 13 | CLAMP | 98853 | 1 |
| 14 | SCREW- (10-24 x .375) | 88077 | 1 |
| 15 | NUT- (1/4-20) | 81053 | 1 |
| 16 | WASHER-Flat (1/4) | 84006 | 1 |
| 17 | DEFLECTOR-Grass | 98821 | 1 |
| 18 | BLADE-Cut-off (Model 155) | 98857 | 1 |
| | BLADE-Cut-off (Model 175) | 00117 | 1 |
| 19 | NUT- (10-24) | 81208 | 2 |
| 20 | SCREW- (1/4-20 x 2) | 80295 | 2 |
| 21 | HOUSING & EYELET (155) | A-98214-A | 1 |
| | HOUSING & EYELET (Model 175) (Dual line) | A-98231-A | 1 |
| 22 | SPRING-Compression | 98848 | 1 |
| 23 | SPOOL & STRING (155) | DA-98911 | 1 |
| | SPOOL & STRING (Model 175) (Dual line) | DA-98912 | 1 |
| 24 | RETAINER-Spool (R.H. Thread) | A-98866 | 1 |
| 25 | LOCKWASHER (1/4) | 83061 | 1 |
| 26 | LINE-Replacement (.080 Dia.) (100 Ft.) | DA-97952-A | |

MODEL ST-185



PARTS LIST - FIGURE 3

| NO. | DESCRIPTION | PART NO. | QTY. |
|-----|---|------------|------|
| 1 | HARNES | DA-92703-A | 1 |
| 2 | NUT | 72084-A1 | 1 |
| 3 | PLATE-Indicating | 95231 | 1 |
| 4 | WASHER-Grounding | 95611-A | 1 |
| 5 | SWITCH-Toggle | 93653 | 1 |
| 6 | SCREW- (#8 x .750 plastite) | 82368 | 4 |
| 7 | GRIP-Right hand | 00189 | 1 |
| 8 | CABLE | 98807 | 1 |
| 9 | TRIGGER | 98772 | 1 |
| 10 | LEAD-Electrical | A-98918 | 1 |
| 11 | LEAD-Ground | A-98919 | 1 |
| 12 | HOUSING-Drive shaft | A-00112 | 1 |
| 13 | Includes: DECAL- Starting Instruction | 98924 | 1 |
| 14 | SHAFT-Spindle | 98834 | 1 |
| 15 | GRIP-Left handle | 00190 | 1 |
| 16 | NUT (1/4-20) | 81267 | 2 |
| 17 | WASHER (1/4) | 83061 | 2 |
| 18 | CLAMP-Handle bar | 97640-1 | 2 |
| 19 | SCREW (1/4-20 x .875) | 82486 | 1 |
| 20 | SCREW (1/4-20 x 1 1/2) | 88071 | 1 |
| 21 | SHAFT-Flexible | 98818 | 1 |
| 22 | HANDLE BAR | A-97709 | 1 |
| 23 | Includes: GRIP | 94474 | 1 |
| 24 | HOUSING-Lower bearing | 98732-1 | 1 |
| 25 | SCREW (1/4-20 x 1/2) | 80681-3 | 3 |
| 26 | SCREW (1/4-20 x 1) | 88078 | 1 |
| 27 | SCREW (1/4-20 x 1/2) | 88049 | 1 |
| 28 | WASHER-Thrust | 98838 | 1 |
| 29 | BEARING-Ball | 98798 | 2 |
| 30 | SPACER-Bearing | 98839 | 1 |
| 31 | RING-Snap | 98799 | 1 |
| 32 | WASHER-Flange | 98835-1 | 1 |
| 33 | BLADE- Tri-Arc | D-98717 | 1 |
| 34 | WASHER-Cupped | 98836 | 1 |
| 35 | NUT- Hex locking (R.H.) | 98837 | 1 |
| 36 | BLADE-Saw, 8" (Optional) | D-98935 | 1 |
| 37 | RETAINER-Spool (R.H. Thread) | A-98866 | 1 |
| 38 | SPOOL & STRING (Dual line) | DA-98912 | 1 |
| 39 | SPRING-Compression | 98848 | 1 |
| 40 | HOUSING & EYELET (Dual line) | A-98231-A | 1 |
| 41 | CONNECTOR-Drive | 98849 | 1 |
| 42 | DEFLECTOR-Grass | 98845-1 | 1 |
| 43 | NUT- (10-32) | 81206 | 2 |
| 44 | BLADE-Cut-off | 98858 | 1 |
| 45 | SCREW (10-32 x 3/8) | 80870 | 2 |
| 46 | BRACKET-Hanger | A-94442 | 1 |
| 47 | Includes: SCREW-Thread (10-24 x 1/2) | 82260 | 1 |
| 48 | LINE-Replacement (.080 Dia.) (100 Ft.) | DA-97952-A | 1 |

FIGURE 3

MODEL ST-285

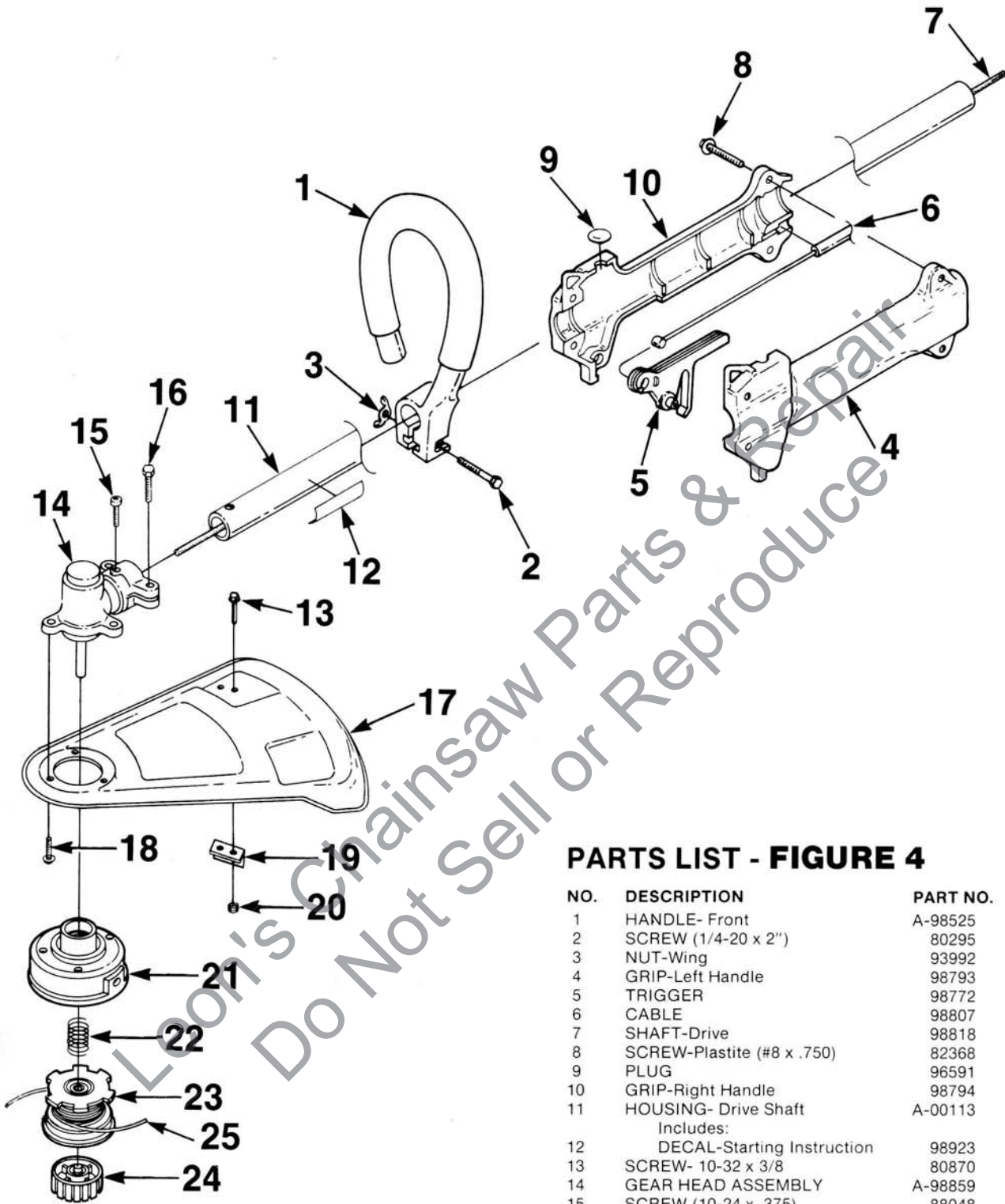
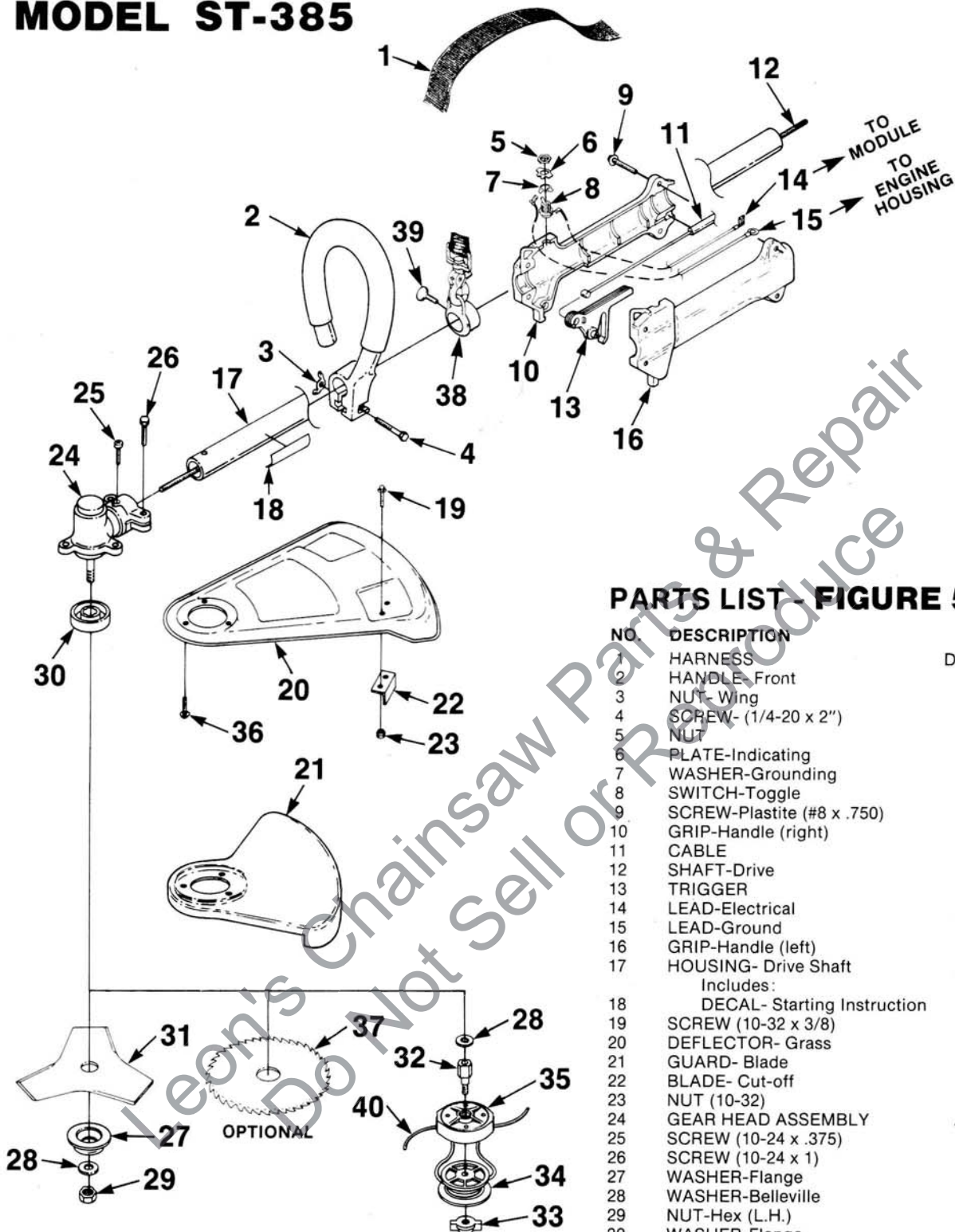


FIGURE 4

PARTS LIST - FIGURE 4

| NO. | DESCRIPTION | PART NO. | QTY. |
|-----|--|------------|------|
| 1 | HANDLE- Front | A-98525 | 1 |
| 2 | SCREW (1/4-20 x 2") | 80295 | 1 |
| 3 | NUT-Wing | 93992 | 1 |
| 4 | GRIP-Left Handle | 98793 | 1 |
| 5 | TRIGGER | 98772 | 1 |
| 6 | CABLE | 98807 | 1 |
| 7 | SHAFT-Drive | 98818 | 1 |
| 8 | SCREW-Plastite (#8 x .750) | 82368 | 4 |
| 9 | PLUG | 96591 | 1 |
| 10 | GRIP-Right Handle | 98794 | 1 |
| 11 | HOUSING- Drive Shaft | A-00113 | 1 |
| | Includes: | | |
| 12 | DECAL-Starting Instruction | 98923 | 1 |
| 13 | SCREW- 10-32 x 3/8 | 80870 | 2 |
| 14 | GEAR HEAD ASSEMBLY | A-98859 | 1 |
| 15 | SCREW (10-24 x .375) | 88048 | 1 |
| 16 | SCREW (10-24 x 1) | 88053 | 2 |
| 17 | DEFLECTOR-Grass | 98846-1 | 1 |
| 18 | SCREW (10-24 x .375) | 88077 | 3 |
| 19 | BLADE-Cutt-off | 00074 | 1 |
| 20 | NUT (10-32) | 81206 | 2 |
| 21 | HOUSING & EYELET (Dual line) | A-98231-A | 1 |
| 22 | SPRING- Compression | 98848 | 1 |
| 23 | SPOOL & STRING (Dual line) | DA-98912 | 1 |
| 24 | RETAINER-Spool | A-98866 | 1 |
| 25 | LINE-Replacement (.080 Dia.) (100 Ft.) | DA-97952-A | |

MODEL ST-385



PARTS LIST - FIGURE 5

| NO. | DESCRIPTION | PART NO. | QTY. |
|-----|---|------------|------|
| 1 | HARNES | DA-92703-A | 1 |
| 2 | HANDLE- Front | A-98525 | 1 |
| 3 | NUT- Wing | 93992 | 1 |
| 4 | SCREW- (1/4-20 x 2") | 80295 | 1 |
| 5 | NUT | 72084-A1 | 1 |
| 6 | PLATE-Indicating | 95231 | 1 |
| 7 | WASHER- Grounding | 95611-A | 1 |
| 8 | SWITCH-Toggle | 93653 | 1 |
| 9 | SCREW-Plastite (#8 x .750) | 82368 | 4 |
| 10 | GRIP-Handle (right) | 00189 | 1 |
| 11 | CABLE | 98807 | 1 |
| 12 | SHAFT-Drive | 98832 | 1 |
| 13 | TRIGGER | 98772 | 1 |
| 14 | LEAD-Electrical | A-98918 | 1 |
| 15 | LEAD-Ground | A-98919 | 1 |
| 16 | GRIP-Handle (left) | 00190 | 1 |
| 17 | HOUSING- Drive Shaft | A-00114 | 1 |
| | Includes: | | |
| 18 | DECAL- Starting Instruction | 98924 | 1 |
| 19 | SCREW (10-32 x 3/8) | 80870 | 2 |
| 20 | DEFLECTOR- Grass | 98846-1 | 1 |
| 21 | GUARD- Blade | 98847-1 | 1 |
| 22 | BLADE- Cut-off | 00075 | 1 |
| 23 | NUT (10-32) | 81206 | 2 |
| 24 | GEAR HEAD ASSEMBLY | A-98844 | 1 |
| 25 | SCREW (10-24 x .375) | 88048 | 1 |
| 26 | SCREW (10-24 x 1) | 88053 | 2 |
| 27 | WASHER-Flange | 98940 | 1 |
| 28 | WASHER-Belleville | 83120 | 2 |
| 29 | NUT-Hex (L.H.) | 81271 | 1 |
| 30 | WASHER-Flange | 98944 | 1 |
| 31 | TRI-ARC BLADE | D-98717 | 1 |
| 32 | ADAPTER-Shaft | 00088 | 1 |
| 33 | NUT (L.H.) | 81272-1 | 1 |
| 34 | SPOOL & STRING (Dual line) | A-00143 | 1 |
| 35 | STRING HOUSING (Dual line) | A-00144 | 1 |
| 36 | SCREW (10-24 x 3.75) | 88077 | 3 |
| 37 | BLADE-Saw (Optional) | D-98935 | 1 |
| 38 | BRACKET- Hanger | A-94442 | 1 |
| | Includes: | | |
| 39 | SCREW- (10-24 x 1/2) | 82260 | 1 |
| 40 | LINE-Replacement (.105 Dia.) 1 lb. Box (250 Ft.) | 98071-01 | |

FIGURE 5

HEADQUARTERS

HOMELITE DIVISION OF TEXTRON INC.
P.O. BOX 7047
14401 CAROWINDS BOULEVARD
CHARLOTTE, N.C. 28217

OVERSEAS OFFICES

HOMELITE DIVISION OF TEXTRON INC.
Korenaarstraat 1
2153 BM Nieuw Vennepe
The Netherlands

HOMELITE DIVISION OF TEXTRON INC.
Pacific Limited
P.O. BOX 209
Blackburn, 3130
Victoria, Australia

CANADIAN OFFICES

HOMELITE DIVISION OF TEXTRON INC.
180 Labrosse Avenue
Pointe-Claire, Quebec
H9R 1A2

3260 Viking Way
Richmond, British Columbia
V6V 1N6

16520, 111th Avenue
Edmonton, Alberta
T5M 3V8

37 Densley Avenue
Toronto, Ontario
M6M 2P5

45 Brandon Street
Moncton, New Brunswick
E1C 7E7

HOMELITE **TEXTRON**

Homelite Division of Textron Inc.

Leon's Chainsaw Parts & Repair
Do Not Sell or Reproduce