

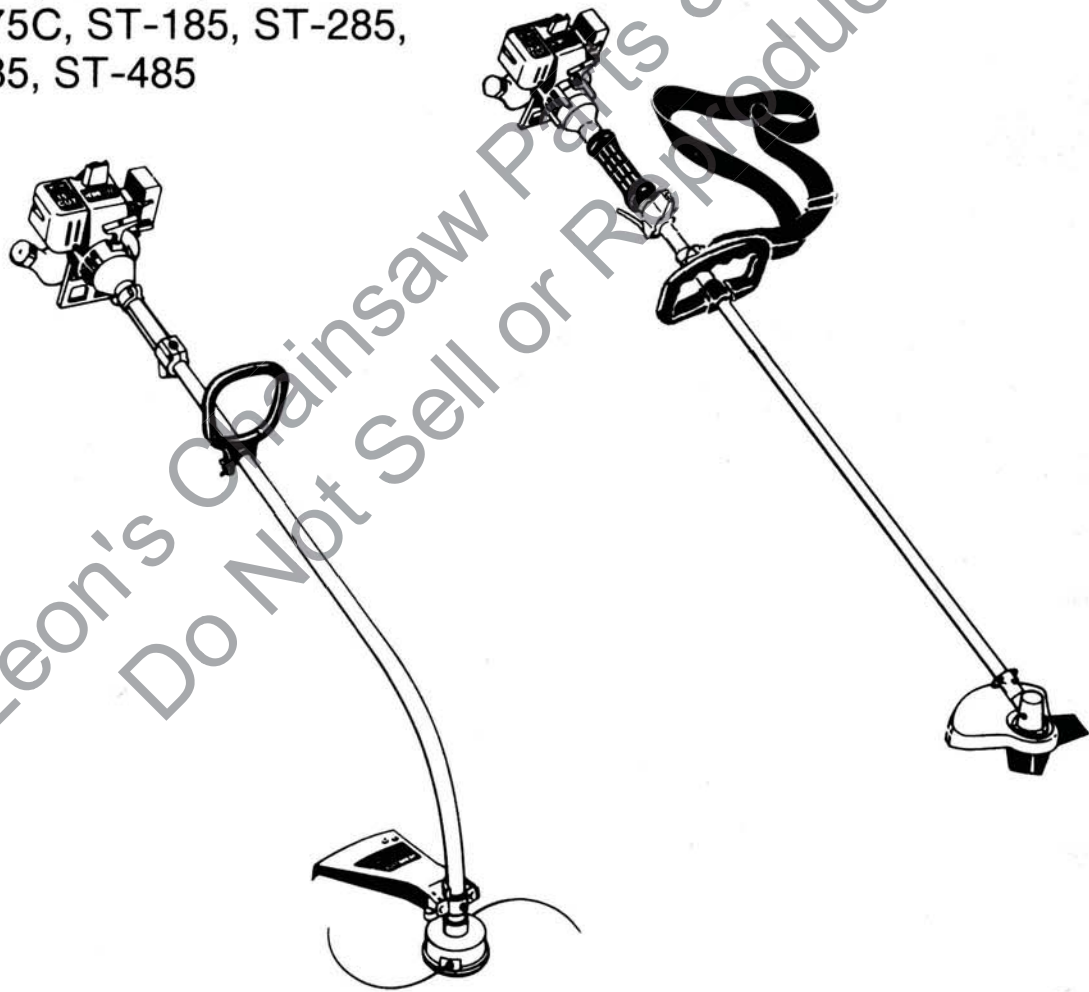
PART NUMBER 17968-A
Printed in U.S.A.
Price .35¢

HOMELITE®

STRING TRIMMERS PARTS LIST

MODELS:

ST-145, ST-155, ST-175
ST-175C, ST-185, ST-285,
ST-385, ST-485



HOMELITE **TEXTRON**
Homelite Division of Textron Inc.

ENGINE

FIGURE 1 ILLUSTRATES PARTS FROM ALL FIVE STRING TRIMMERS. THEREFORE, SOME PARTS APPLY ONLY TO SPECIFIC MODELS. WHERE APPLICABLE, SPECIFIC MODEL NUMBERS ARE NOTED ON THIS PAGE AND IN PARTS LIST— FIGURE 1 ON PAGE 3.

CALIFORNIA MODELS ONLY

NOTE:
SEE BACK
PAGE FOR
CARBURETOR
INFORMATION.

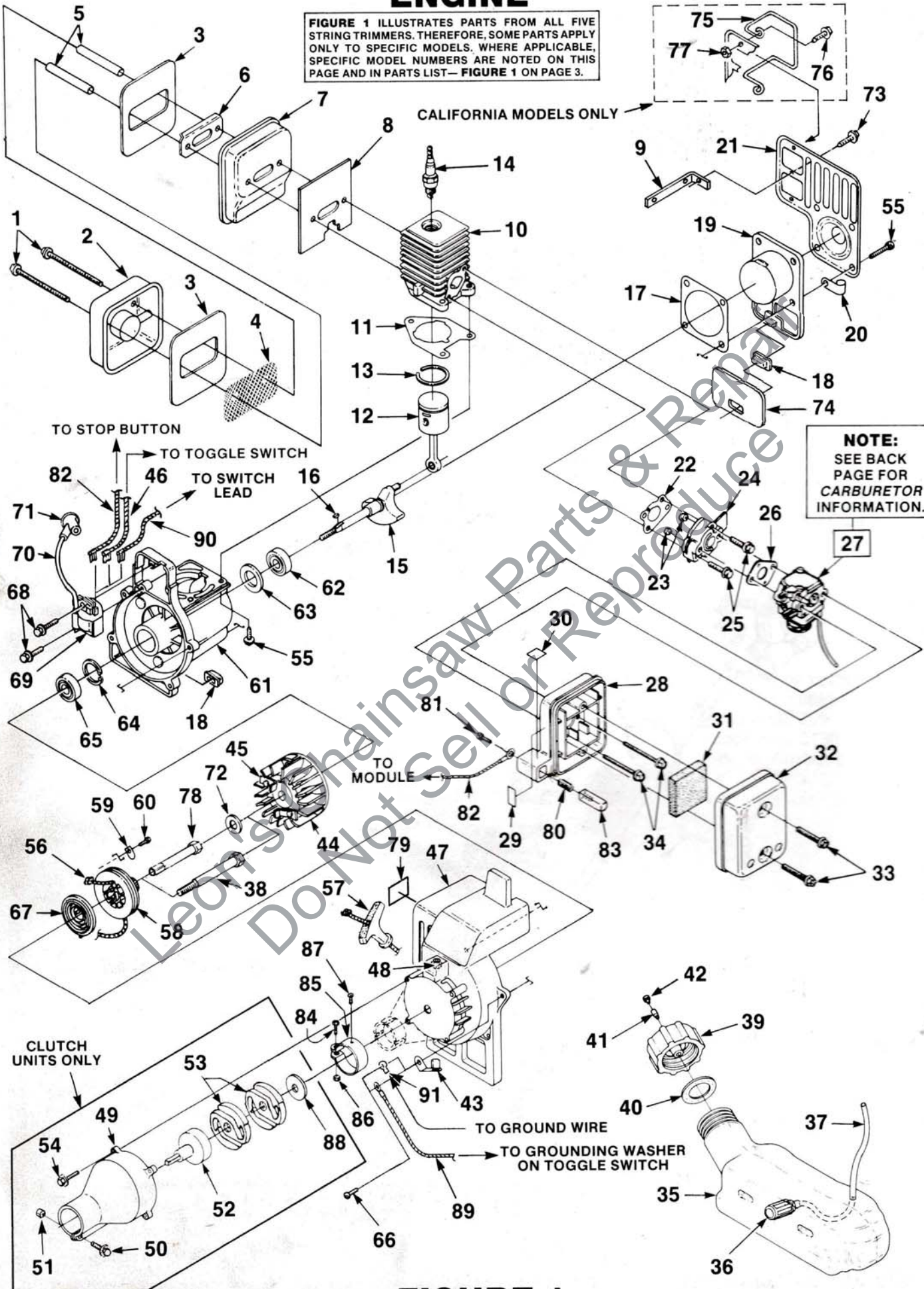


FIGURE 1

PARTS LIST - FIGURE 1 (See Note 1)

NO.	DESCRIPTION	PART NO.	QTY.	NO.	DESCRIPTION	PART NO.	QTY.
	MUFFLER ASSEMBLY	A-98785	1	47	HOUSING- Engine (Clutch Models Only)	A-00105	1
	Includes:				HOUSING- Engine (Non-Clutch Model)	A-00106	1
1	SCREW- (10-24 x 2 1/2)	88060	2		Includes:		
2	COVER- Muffler	A-98780	1	48	BUSHING	A-97796	1
3	BAFFLE- Muffler	98782	2	49	TUBE ADAPTER	A-98931	1
4	SCREEN- Spark	98784	1		Includes:		
5	SPACER- Muffler	98860	2	50	SCREW (10-24 x 1.250)	88054	1
6	PLATE- Reinforcing	98783	1	51	NUT (10-24)	81208	1
7	BODY- Muffler	98781	1	52	CONNECTOR & DRUM	A-00252	1
8	GASKET- Muffler	98786	1	53	CLUTCH	00242	2
9	BRACKET	00179	1	54	SCREW (10-24 x .875)	88052	4
10	CYLINDER	A-00108	1	55	SCREW (10-24 x .750)	82508	7
	Includes:			56	ROPE- Starter (42", #3 1/2)	00715	1
11	CYLINDER- Gasket	98764	1	57	GRIP- Starter	70211	1
12	PISTON & ROD ASSEMBLY (Models 145, 155, 175, 175C, 185 & 285)	A-00256	1	58	PULLEY- Starter	98770	1
	PISTON & ROD ASSEMBLY (Models 385 & 485)	A-00239	1	59	BRACKET- Retaining	98791	1
	Includes:			60	SCREW- Plastite (10 x 1/2)	82511	1
13	RING- Piston	96935	1	61	CRANKCASE ASSEMBLY	A-00107	1
14	SPARK PLUG (DJ7Y)	96169-S	1		Includes:		
15	CRANKSHAFT (Models 145 & 155)	98758-2	1	62	BEARING- Ball	98797	1
	CRANKSHAFT (Models 175, 175C, 185 & 285)	98758-4	1	63	SEAL	98800	1
	CRANKSHAFT (Model 385 & 485)	98758-3	1	64	RING- Retaining	98799	1
16	KEY- Woodruff	69250	1	65	BALL- Bearing	98798	1
17	GASKET- Crankcase cover	98767	1	66	SCREW- Taptite (10-24 x .875)	82518	4
18	BUMPER- Rubber	98792	3	67	SPRING & CONTAINER	A-98773	1
19	COVER- Crankcase	98754	1	68	SCREW- Taptite (8-32 x 1)	82509	2
20	CLAMP	98752	1	69	MODULE- Ignition	94711-B	1
21	SHIELD	98934	1		Includes:		
22	GASKET- Heat dam	98765-A	1	70	LEAD- High-Tension	69326	1
23	NUT (10-24)	81208	2	71	TERMINAL- High-Tension	A-33055	1
24	HEAT DAM	98768	1	72	WASHER- Flat (1/32) (Non-Clutch Models)	84065	1
25	SCREW- Taptite (10-24 x 1)	82507	2	73	SCREW- Hex sems (10-24 x .375)	88077	1
26	GASKET- Carburetor	98766	1	74	PAD- Rubber (185, 385, & 485)	00240	1
27	CARBURETOR- (Zama)	A-00047-B	1	75	WIRE GUARD KIT (California Models Only)	A-00254	1
	CARBURETOR- (Walbro)	A-98803	1		Includes:		
28	AIR FILTER BOX	A-00110	1	76	SCREW- Hex sems (10-24 x 1/2)	88049	2
	Includes:			77	NUT (10-24)	81208	2
29	DECAL- Choke, Run	00772	1	78	CONNECTOR- Drive (Non-Clutch Models)	98795	1
30	DECAL- Push-Hold (Models 145, 155, 175, 175C, & 285)	98943	1	79	DECAL- Gasohol	00305	1
31	FILTER- Air	D-98760	1	80	SPRING- Compression	95020	1
32	COVER- Air filter	98761	1	81	SCREW (#6 plastite)	93923	1
33	SCREW- Plastite (8 x .750)	82368	2	82	LEAD- Electrical (Models 145, 155, 175, 175C & 285)	A-98809	1
34	SCREW (10-24 x 2.250)	82510	2	83	BUTTON- Switch	98769	1
35	TANK- Fuel	A-00098-A	1	84	SCREW- Hex Sems (10-24 x .375)	82268	1
	Includes:			85	CLAMP	98802-A	1
36	FILTER- Fuel	49422	1	86	NUT- Square	97574	1
37	TUBING- Rubber 7"	94772-28	1	87	SCREW	82522	1
38	ADAPTER- Clutch (Clutch Model Only)	98930	1	88	WASHER- Flat	98929	1
39	FUEL CAP ASSEMBLY	A-00099	1	89	LEAD- Ground (Model 185) & (Model 385— UT-15040 & UT-15040-A)	A-98919	1
	Includes:			90	LEAD- Electrical (Models 385— UT-15040-B) & (Model 485)	A-00681	1
40	GASKET- Fuel cap	98805	1	91	TERMINAL (Model 385— UT-15040-B) & (Model 485)	00719	1
41	VALVE- Filter	98819	1				
42	FILTER- Cap	98913	1				
43	BRACKET- Cable	A-98808	1				
44	ROTOR	A-95007	1				
	Includes:						
45	KIT- Starter pawl	A-70285-D	1				
46	LEAD- Electrical (Model 185) & (Model 385— UT-15040 & UT-15040-A)	A-98918	1				

NOTE 1: Clutch models - ST-175C, ST-185, ST-285 w/clutch, ST-385 & ST-485.
Non-clutch models - ST-145, ST-155, ST-175 & ST-285 w/o clutch.

MODELS ST-145, ST-155, ST-175 & ST-175C

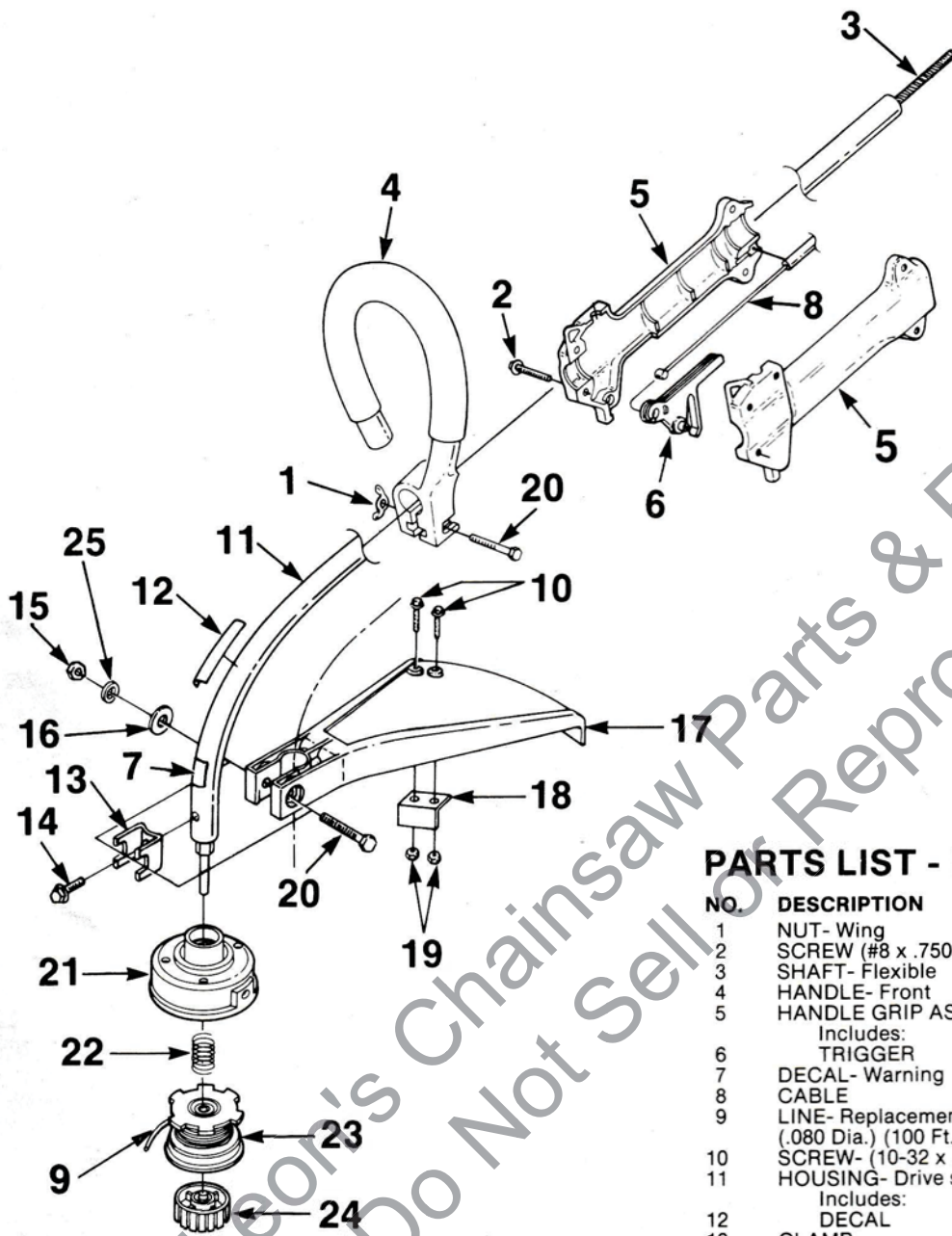


FIGURE 2

PARTS LIST - FIGURE 2

NO.	DESCRIPTION	PART NO.	QTY.
1	NUT- Wing	93992	1
2	SCREW (#8 x .750 plastite)	82368	5
3	SHAFT- Flexible	98816	1
4	HANDLE- Front	A-98525	1
5	HANDLE GRIP ASSEMBLY	A-00879	1
	Includes:		
6	TRIGGER	98772-A	1
7	DECAL- Warning	00308	1
8	CABLE	98807	1
9	LINE- Replacement (.080 Dia.) (100 Ft.)	DA-97952-A	1
10	SCREW- (10-32 x .875)	82268	2
11	HOUSING- Drive shaft	A-00104	1
	Includes:		
12	DECAL	98923	1
13	CLAMP	98853	1
14	SCREW- (10-24 x .375)	88077	1
15	NUT (1/4-20)	81053	1
16	WASHER- Flat (1/4)	84006	1
17	DEFLECTOR- Grass	98821	1
18	BLADE- Cut-off (Models 145 & 155)	98857	1
	BLADE- Cut-off (Models 175 & 175C)	00117	1
19	NUT- (10-24)	81206	2
20	SCREW- (1/4-20 x 2)	80295	2
21	HOUSING & EYELET- Dual line	A-98231-A	1
22	SPRING- Compression	98848	1
23	SPOOL & STRING- (ST-155) (Note 1)	DA-98911	1
	SPOOL & STRING (Note 1) (Dual Line)	DA-98912	1
24	RETAINER- Spool (R.H. Threaded)	A-98866-A	1
25	LOCKWASHER (1/4)	83009	1

NOTE: ST-155 with single line use DA-98911 replacement string.

MODEL ST-185

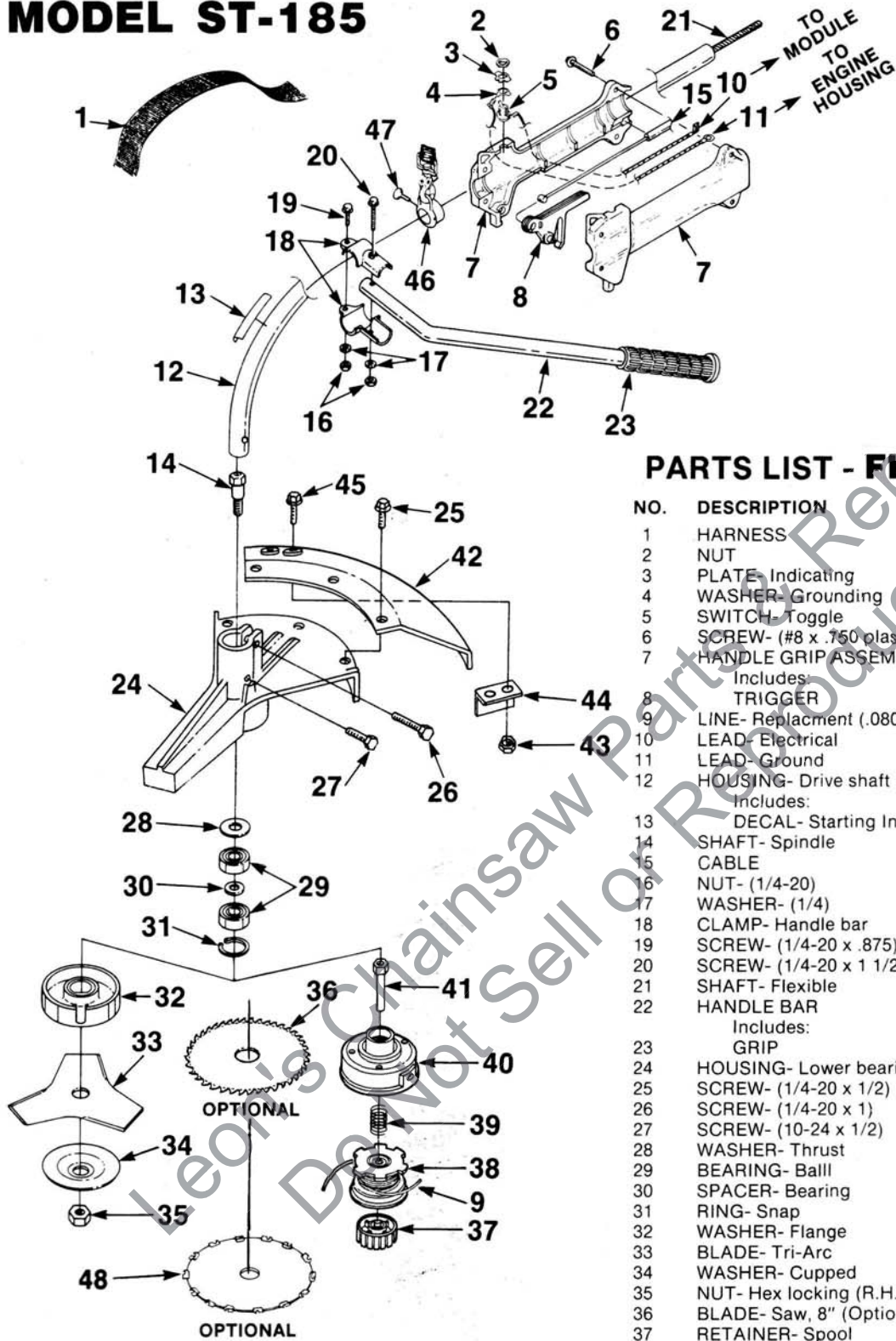


FIGURE 3

PARTS LIST - FIGURE 3

NO.	DESCRIPTION	PART NO	QTY.
1	HARNES	DA-92703-A	1
2	NUT	72084-A1	1
3	PLATE- Indicating	95231	1
4	WASHER- Grounding	95611-A	1
5	SWITCH- Toggle	93653	1
6	SCREW- (#8 x .750 plastite)	82368	4
7	HANDLE GRIP ASSEMBLY	A-00879	1
	Includes:		
8	TRIGGER	98772-A	1
9	LINE- Replacement (.080 Dia.) (100 Ft.)	DA-97952-A	1
10	LEAD- Electrical	A-98918	1
11	LEAD- Ground	A-98919	1
12	HOUSING- Drive shaft	A-00112	1
	Includes:		
13	DECAL- Starting Instructions	98924	1
14	SHAFT- Spindle	98834	1
15	CABLE	98807	1
16	NUT- (1/4-20)	81267	2
17	WASHER- (1/4)	83061	2
18	CLAMP- Handle bar	00422	2
19	SCREW- (1/4-20 x .875)	88078	1
20	SCREW- (1/4-20 x 1 1/2)	88071	1
21	SHAFT- Flexible	98818	1
22	HANDLE BAR	A-97709-A	1
	Includes:		
23	GRIP	94474	1
24	HOUSING- Lower bearing	98732-1	1
25	SCREW- (1/4-20 x 1/2)	80681-3	3
26	SCREW- (1/4-20 x 1)	88078	1
27	SCREW- (10-24 x 1/2)	88049	1
28	WASHER- Thrust	98838	1
29	BEARING- Ball	98798	2
30	SPACER- Bearing	98839	1
31	RING- Snap	98799	1
32	WASHER- Flange	98835-1	1
33	BLADE- Tri-Arc	D-98717	1
34	WASHER- Cupped	98836	1
35	NUT- Hex locking (R.H.)	98837	1
36	BLADE- Saw, 8" (Optional)	D-98935	1
37	RETAINER- Spool (R.H. Thread)	A-98866-A	1
38	SPOOL & STRING (Dual line)	DA-98912	1
39	SPRING- Compression	98848	1
40	HOUSING & EYELET (Dual line)	A-98231-A	1
41	CONNECTOR- Drive	98849	1
42	DEFLECTOR- Grass	98845-1	1
43	NUT- (10-32)	81206	2
44	BLADE- Cut-off	98858	1
45	SCREW- (10-32 x 3/8)	80870	2
46	BRACKET- Hanger	A-94442	1
	Includes:		
47	SCREW- Thread (10-24 x 1/2)	82260	1
48	BLADE- Saw 7" "Machete" (Optional)	DA-00714	1

MODEL ST-285

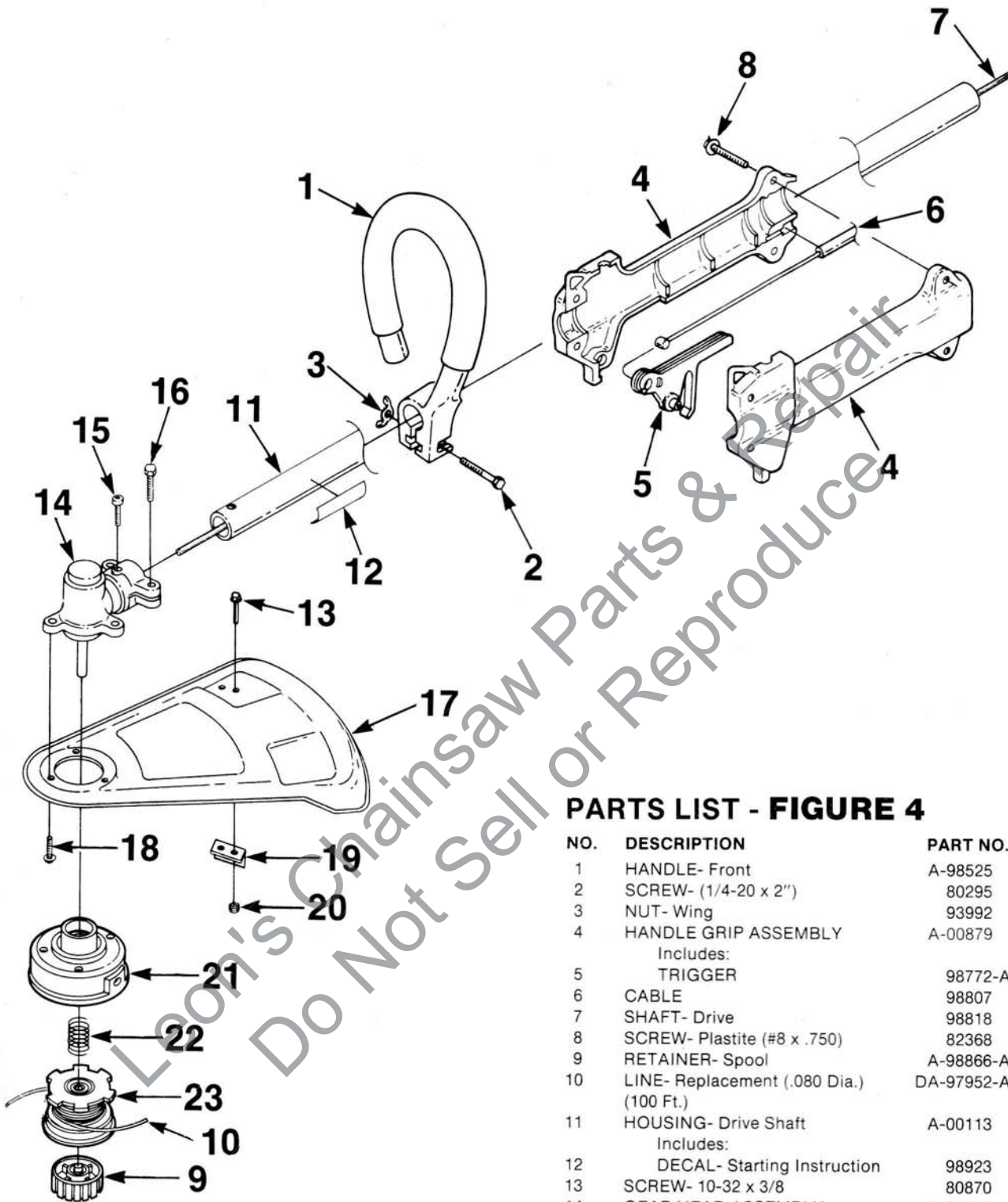


FIGURE 4

PARTS LIST - FIGURE 4

NO.	DESCRIPTION	PART NO.	QTY.
1	HANDLE- Front	A-98525	1
2	SCREW- (1/4-20 x 2")	80295	1
3	NUT- Wing	93992	1
4	HANDLE GRIP ASSEMBLY	A-00879	1
	Includes:		
5	TRIGGER	98772-A	1
6	CABLE	98807	1
7	SHAFT- Drive	98818	1
8	SCREW- Plastite (#8 x .750)	82368	5
9	RETAINER- Spool	A-98866-A	1
10	LINE- Replacement (.080 Dia.) (100 Ft.)	DA-97952-A	1
11	HOUSING- Drive Shaft	A-00113	1
	Includes:		
12	DECAL- Starting Instruction	98923	1
13	SCREW- 10-32 x 3/8	80870	2
14	GEAR HEAD ASSEMBLY	A-98859	1
	Includes:		
15	SCREW- (10-24 x .375)	88048	1
16	SCREW- (10-24 x 1)	82521	2
17	DEFLECTOR- Grass	98846-1	1
18	SCREW (10-24 x .375)	88048	3
19	BLADE- Cut-off	00074	1
20	NUT (10-32)	81206	2
21	HOUSING & EYELET (Dual Line)	A-98231-A	1
22	SPRING- Compression	98848	1
23	SPOOL & STRING (Dual Line)	DA-98912	1

MODELS ST-385 & ST-485

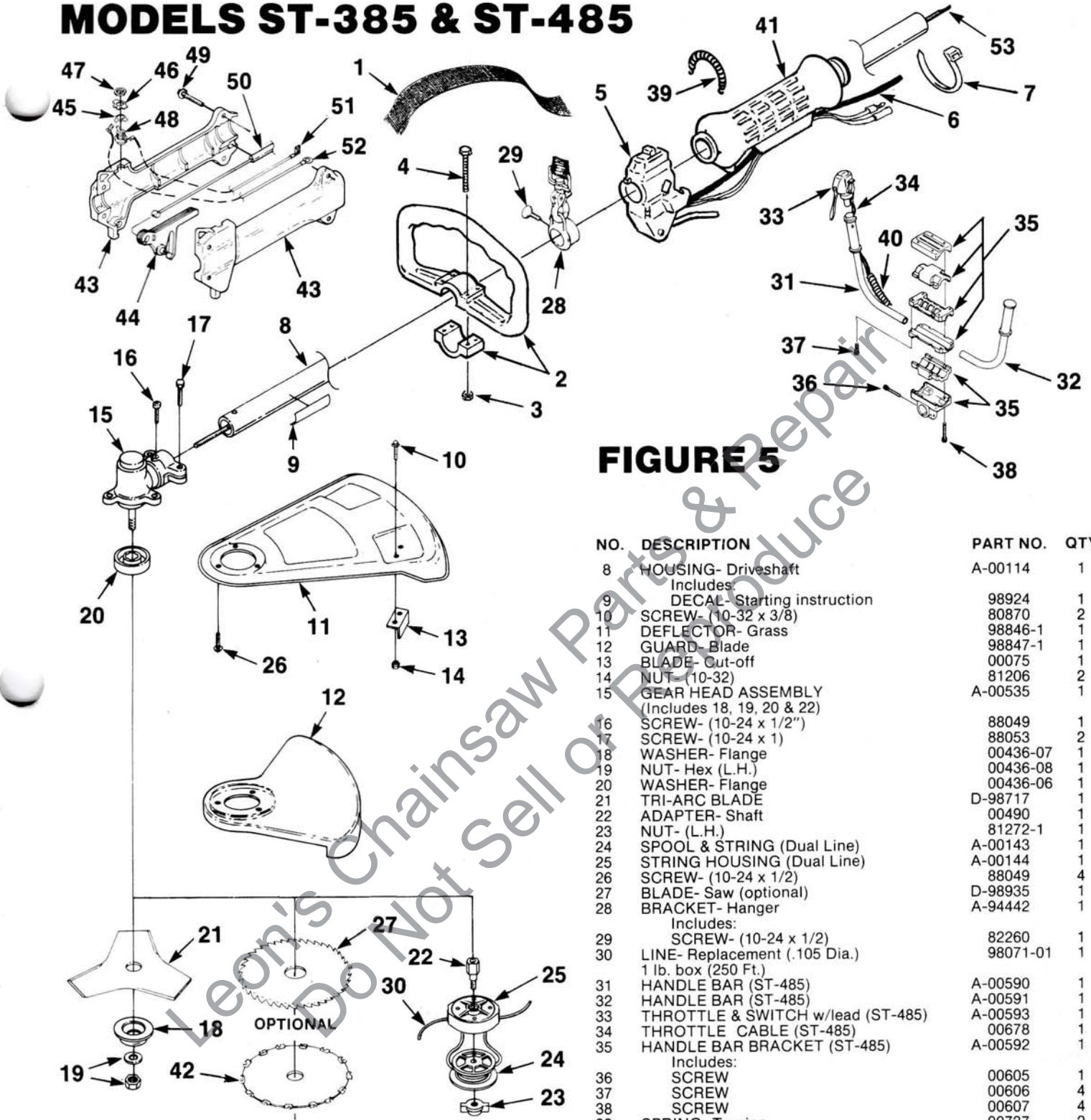


FIGURE 5

PARTS LIST - FIGURE 5

NO.	DESCRIPTION	PART NO.	QTY.
1	HARNESS	A-92703-A	1
2	HANDLE (ST-385)	A-00736	1
3	NUT (ST-385)	00677	4
4	SCREW (ST-385)	00676	4
5	THROTTLE & SWITCH w/lead (ST-385)	A-00738	1
6	THROTTLE CABLE (ST-385)	00685	1
7	CABLE- Tie	46840	3

NO.	DESCRIPTION	PART NO.	QTY.
8	HOUSING- Driveshaft Includes:	A-00114	1
9	DECAL- Starting instruction	98924	1
10	SCREW- (10-32 x 3/8)	80870	2
11	DEFLECTOR- Grass	98846-1	1
12	GUARD- Blade	98847-1	1
13	BLADE- Cut-off	00075	1
14	NUT- (10-32)	81206	2
15	GEAR HEAD ASSEMBLY (Includes 18, 19, 20 & 22)	A-00535	1
16	SCREW- (10-24 x 1/2")	88049	1
17	SCREW- (10-24 x 1)	88053	2
18	WASHER- Flange	00436-07	1
19	NUT- Hex (L.H.)	00436-08	1
20	WASHER- Flange	00436-06	1
21	TRI-ARC BLADE	D-98717	1
22	ADAPTER- Shaft	00490	1
23	NUT- (L.H.)	81272-1	1
24	SPOOL & STRING (Dual Line)	A-00143	1
25	STRING HOUSING (Dual Line)	A-00144	1
26	SCREW- (10-24 x 1/2)	88049	4
27	BLADE- Saw (optional)	D-98935	1
28	BRACKET- Hanger Includes:	A-94442	1
29	SCREW- (10-24 x 1/2)	82260	1
30	LINE- Replacement (.105 Dia.) 1 lb. box (250 Ft.)	98071-01	1
31	HANDLE BAR (ST-485)	A-00590	1
32	HANDLE BAR (ST-485)	A-00591	1
33	THROTTLE & SWITCH w/lead (ST-485)	A-00593	1
34	THROTTLE CABLE (ST-485)	00678	1
35	HANDLE BAR BRACKET (ST-485) Includes:	A-00592	1
36	SCREW	00605	1
37	SCREW	00606	4
38	SCREW	00607	4
39	SPRING- Torsion	00737	2
40	SLEEVING- Plastic (ST-485)	00684	1
41	GRIP- Handle	00597-A	1
42	BLADE- Saw 7" Machete (optional)	DA-00714	1
43	HANDLE GRIP ASSEMBLY (Note 1) Includes:	A-00879	1
44	TRIGGER (Note 1)	98772-A	1
45	GROUNDING- Washer (Note 1)	95611-A	1
46	PLATE- Indicating (Note 1)	95231	1
47	NUT (Note 1)	72084-A1	1
48	SWITCH- Toggle (Note 1)	93653	1
49	SCREW- #8 x .750 plastite (Note 1)	82368	4
50	CABLE (Note 1)	98807	1
51	LEAD- Electrical (Note 1)	A-98918	1
52	LEAD- Ground (Note 1)	A-98919	1
53	DRIVE SHAFT	98852	1

NOTE 1: Items #43 thru 52 apply to ST-385 UT-15040 & UT-15040-A only.

CARBURETOR _____ REPAIR KITS

ZAMA CARBURETOR A-00047-B

Repair Kit _____ A-00288

Walbro (WT-71) CARBURETOR A-98803

Repair Kit _____ A-00286

Gasket/Diaphragm Kit _____ A-00285

Swivel Kit _____ A-00289

TOOLS AND ACCESSORIES

DESCRIPTION	PART NO.
HOLDING TOOL (Models 185, 385 & 485)	00063
MULTI-PURPOSE GREASE	17193
CARBURETOR REPAIR TOOL KIT	17789
THREAD LOCKING COMPOUND	23488-C
PLASTIC SHIM (.125")	24306
IGNITION TEST SPARK PLUG	JA-31316-4
RUBBER TUBING (10 Ft.)	94772-99
STARTER ROPE #3 1/2 (250 Ft.)	98052
TORX DRIVER BIT	24982-01
TORX BIT (for clutch drum)	24982-03

HEADQUARTERS

HOMELITE DIVISION OF TEXTRON INC.

P.O. BOX 7047
14401 CAROWINDS BOULEVARD
CHARLOTTE, N.C. 28241

OVERSEAS OFFICES

HOMELITE DIVISION OF TEXTRON INC.

Koreenaarstraat 1
2153 BM Nieuw Vennepe
The Netherlands

HOMELITE DIVISION OF TEXTRON LTD.

Unit 22, Hither Trading Estate
Clevedon, Avon, U.K. BS21 6XU

HOMELITE DIVISION OF TEXTRON INC.

Pacific Limited
P.O. BOX 209
Blackburn, 3130
Victoria, Australia

CANADIAN OFFICES

HOMELITE DIVISION OF TEXTRON INC.

1850 55th Avenue
Lachine, Quebec, Canada
H8T-3J5

3260 Viking Way
Richmond, British Columbia
V6V 1N6

16520, 111th Avenue
Edmonton, Alberta
T5M 3V8

37 Densley Avenue
Toronto, Ontario
M6M 2P5

45 Brandon Street
Moncton, New Brunswick
E1C 7E7

HOMELITE **TEXTRON**

Homelite Division of Textron Inc.