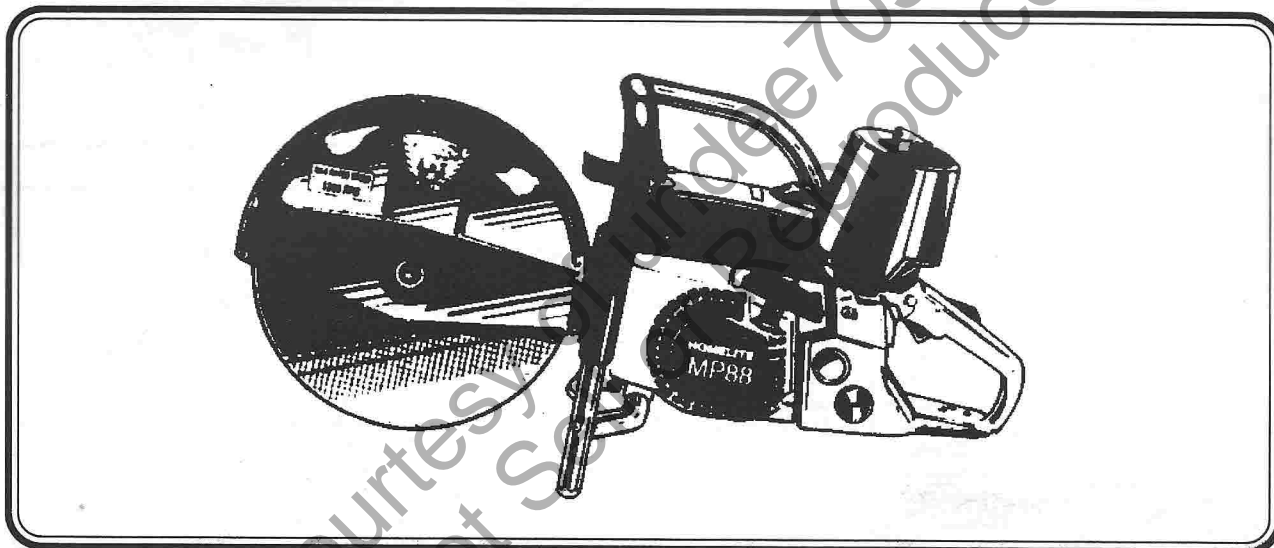


# Homelite®

## GB PARTS LIST

- F LISTE DE PIÈCES
- NL ONDERDELENLIJST
- D TEILELISTE
- I ELENCO DEI PEZZI
- E LISTA DE PIEZAS
- P LISTA DE PEÇAS



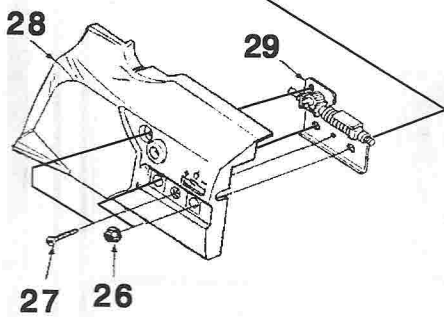
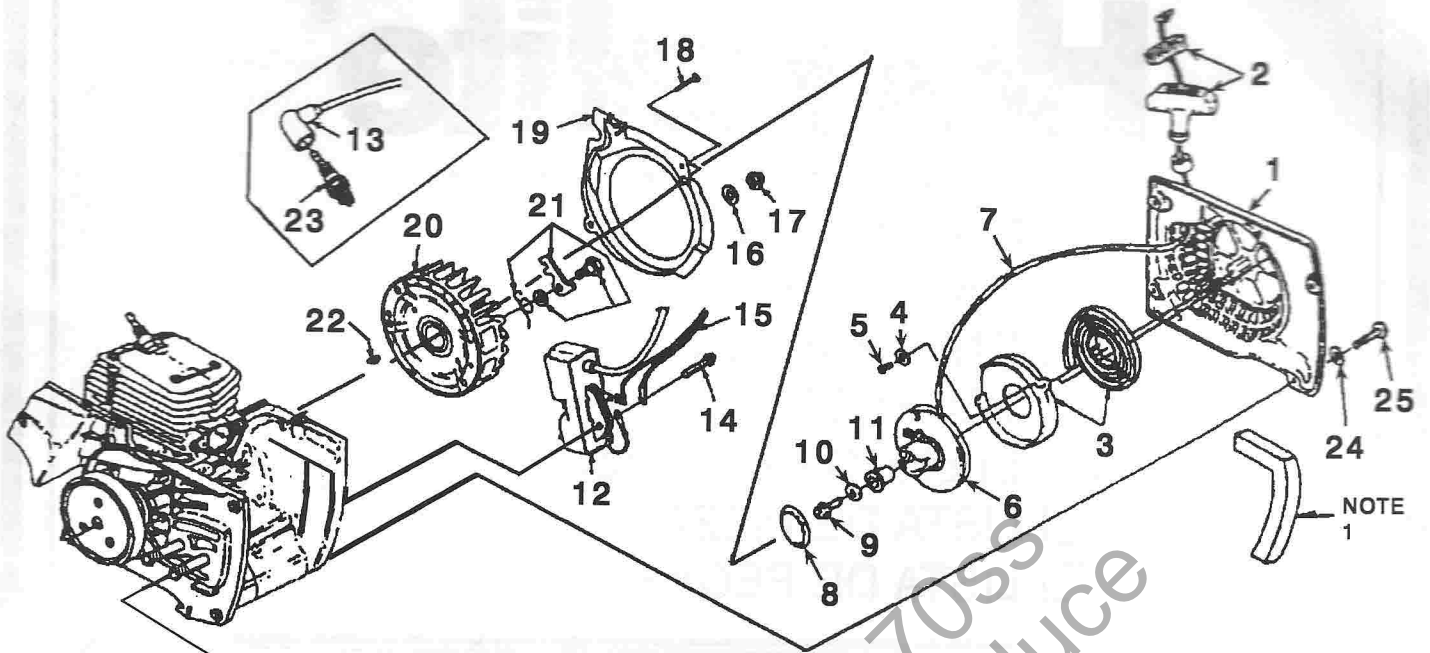
**MP88**  
**UT05059**

**MP88i**  
**UT05063**

Printed in U.S.A.  
Imprimé aux. E.-U.  
Gedruckt in de V.S.  
Gedruckt in den U.S.A.  
Stampato negli Stati Uniti  
Impreso en EE. UU.  
Impresso nos E.U.A.

**P/N 19848**

# STARTER - IGNITION



TORQUE SPECIFICATIONS			
ITEM NO.	In/Lbs	Nm	REQUIRED LOCKTITE
5	8 - 12	9 - 1.4	
9	30 - 40	3.4 - 4.5	
14	50 - 60	5.6 - 6.8	262 Red
18	30 - 40	3.4 - 4.5	
25	40 - 50	4.5 - 5.6	

N	PN	D	Q
1	• A 02292 A	STARTER COMPLETE	1
2	A 69962 B	GRIP- w/Insert	1
3	A 98067	SPRING & RETAINER	1
4	84025	WASHER- Flat (#8)	3
5	82528	SCREW- Thread Form. (6 X 3/8")	2
6	A 97990 C	PULLEY & ROPE	1
7	A 00518	ROPE	1
8	02505	SPRING- Grip	1
9	82409	SCREW- Plastite (10-14 X 5/8")	1
10	58763	WASHER- Retaining	1
11	97992 A	BUSHING- Starter Post	1
12	• A 01827	MODULE ASSY.	1
13	A 33055	TERMINAL- Spark Plug	1
14	82562	SCREW- Hex Hd. (10-24 X 7/8")	2
15	A 98583 1D	LEAD- Ground w/Grommet	1
16	95479 A	WASHER- Flat	1
17	81255	NUT- Lock Hex (3/8-24)	1
18	80582	SCREW- Mach. (8-32 X 5/8")	2
19	02133	SCROLL- Air Guide	1
20	• A 02085 B	ROTOR	1
21	A 03610	STARTER PAWL KIT	1
22	75078	KEY- Woodruff	1
23	98217 S	SPARK PLUG (RCJ6Y)	1
24	84003	WASHER- Flat (#10)	4
25	82562	SCREW- Pan Hd. (10-24 X 5/8")	4
26	81282	NUT-Hex Flange (5/16-18)	2
27	82575	SCREW-Taptite (8-32 X 5/8")	2
28	A 08180	COVER-Clutch	1
29	A 03879 A	GEAR KIT	1

NOTE 1: A-03611-A FOAM KIT

No.  
N°  
Nr.  
Nr.  
N°  
No.  
N°

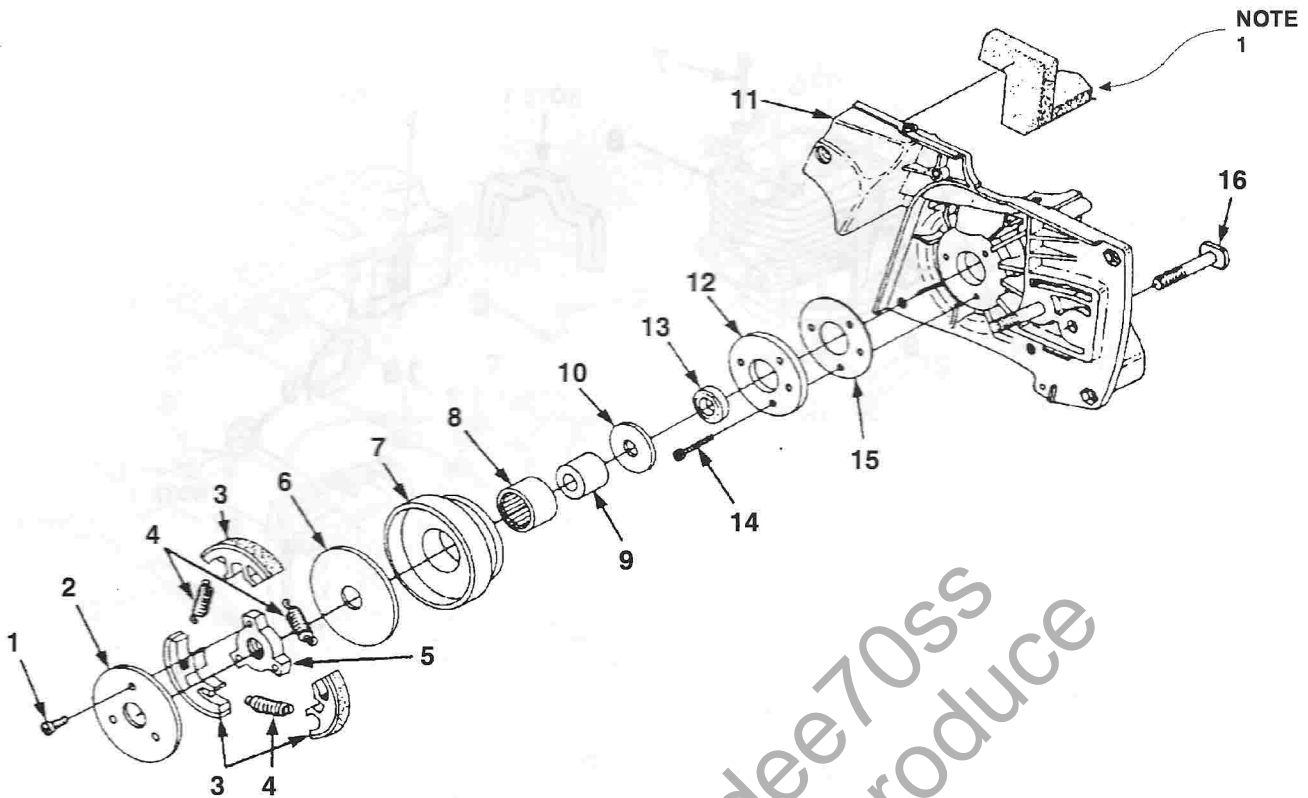
Part No.  
Pièce N°  
Stuknummer  
Teil Nr.  
Pezzo N°  
No. de pieza  
N° da peça

DESCRIPTION — D

Quantity  
Quantité  
Aantal  
Menge  
Quantità  
Cantidad  
Quantidade

Assemblies  
Ensembles  
Assemblages  
Bausätze  
Compressi  
Conjuntos  
Conjuntos

# CLUTCH - CRANKCASE

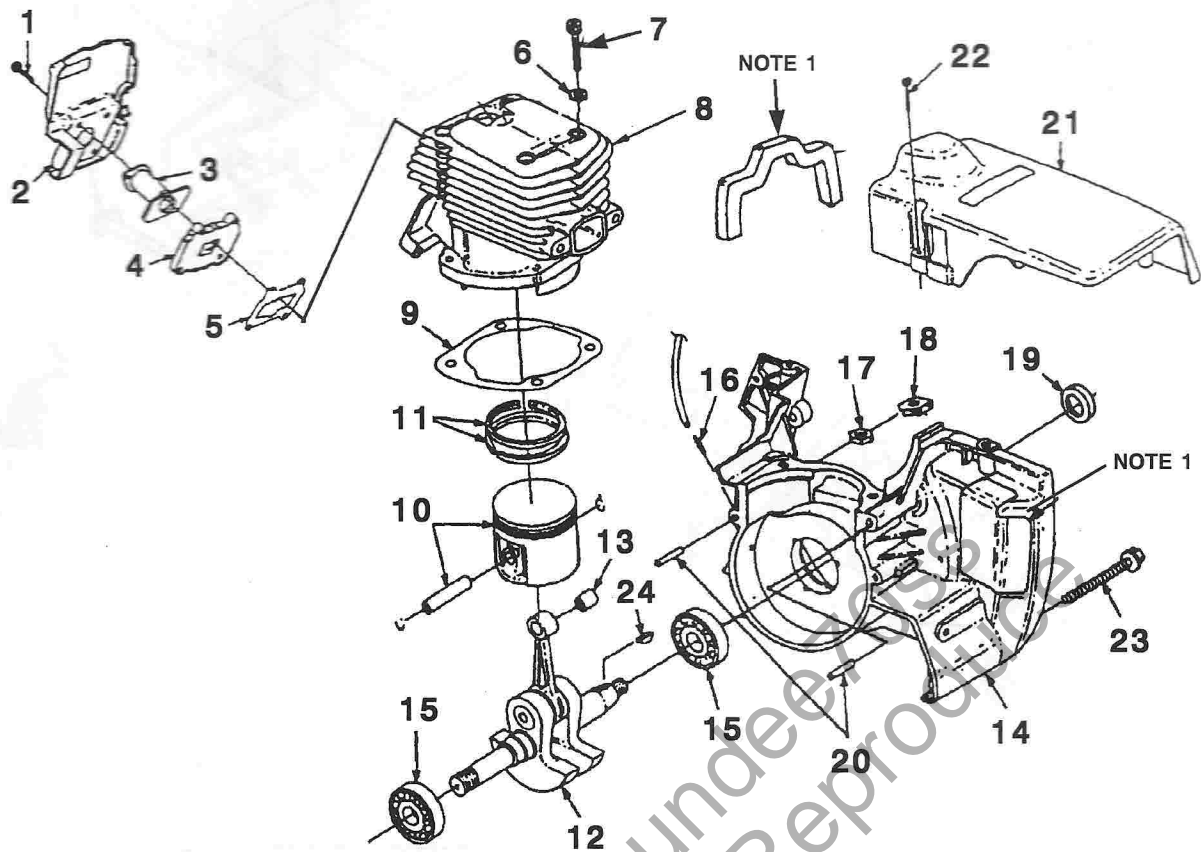


TORQUE SPECIFICATIONS			
ITEM NO.	In/Lbs	Nm	REQUIRED LOCKTITE
1	30-40	3.4-4.5	262 Red
14	40-50	4.5-5.6	262 Red

N	PN	D	Q
1	88041	SCREW- Hex Sems (8-32 X 3/4")	3
2	93628	CLUTCH COVER	1
3	A 93632 B	CLUTCH SHOE	3
4	93638 A	CLUTCH SPRING	3
5	93639	CLUTCH SPIDER	1
6	93650	WASHER- Thrust	1
7	A 49543	PULLEY & DRUM	1
8	46071	NEEDLE BEARING	1
9	46070	RACE- Inner	1
10	46135	WASHER- Thrust	1
11	A 08391	CRANKCASE ASSY. (COMPLETE)	1
12	A 49537 A	RETAINING- Bearing	1
13	12306	SEAL	1
14	82293	SCREW- Socket Cap (10-24 X 5/8")	3
15	00191 D	GASKET	1
16	82595	WHEEL ARM BOLT (5-16-18 X 2.5")	2
	81208	NUT- Hex Lock (10-24) (Not shown)	4
	12689 A	RETAINER- Nut (Not shown)	2
	58308 B	SEAL- Shaft (Not Shown)	1

NOTE 1: A-03611-A FOAM KIT

# ENGINE INTERNAL

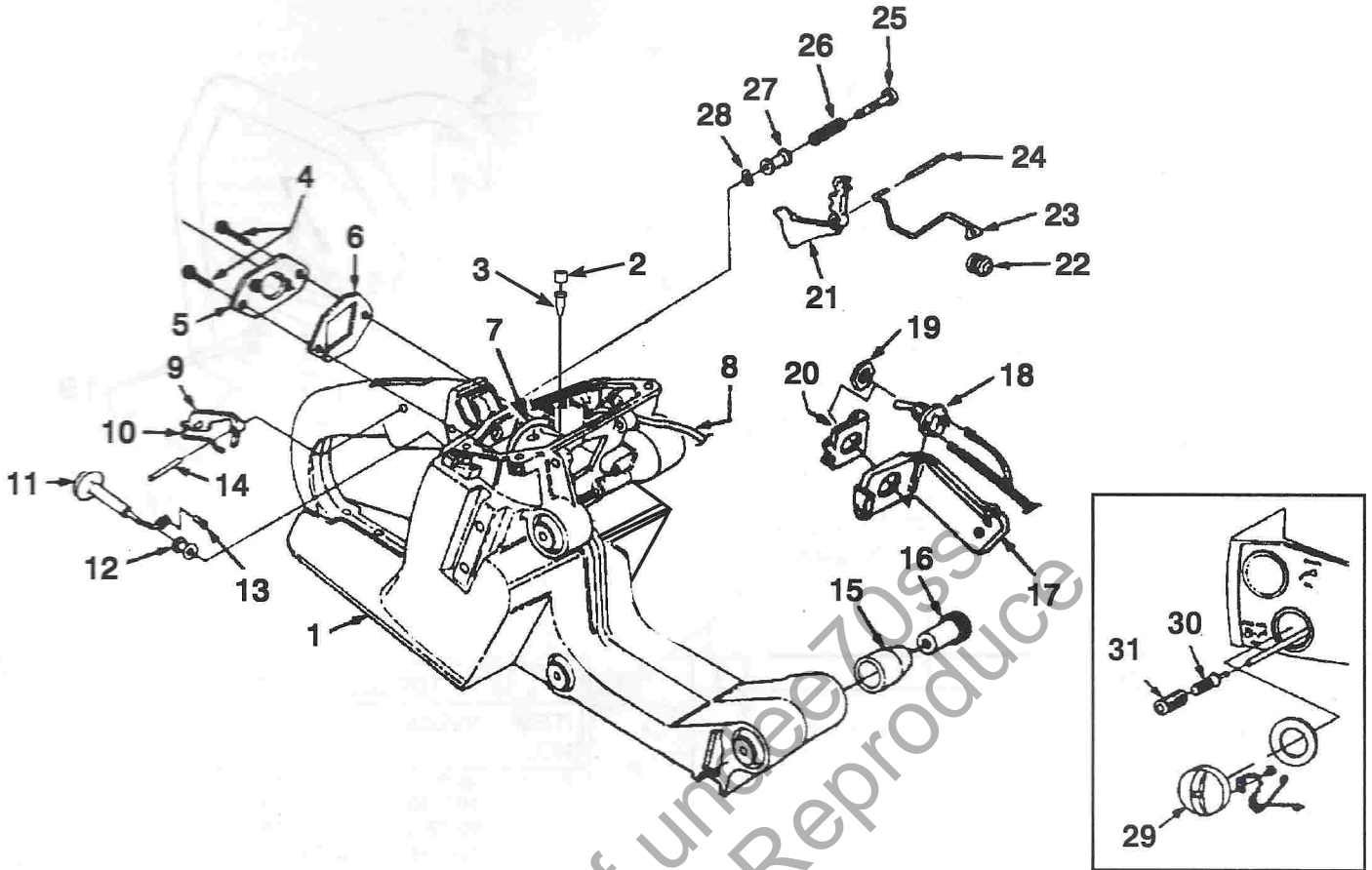


N	PN	D	Q
1	82248	SCREW- Mach. Hex Hd. (10-24 X 1")	1
2	97338 1A	BAFFLE- Cylinder	1
3	97263 2	BOOT- Intake	1
4	02822	ADAPTER- Intake	1
5	04635	GASKET- Intake	1
6	12021	WASHER- Conical (#10)	4
7	82246	SCREW- Cap Socket (10-24 X 1")	4
8	• A 02830 A	CYLINDER & PISTON (Matched)	1
9	97316	GASKET- CYLINDER	1
10	• A 02824 1B	PISTON & PIN ASSY.	1
11	02825	PISTON RING	2
12	• A 03737	CRANKSHAFT & ROD	1
13	93519	BEARING- Needle	1
14	A 08391	CRANKCASE ASSY. (See page 3, Item 11)	1
15	94621 A	BEARING- Ball	2
16	69833	FITTING- Tube	1
17	81208	NUT- Lock Hex (10-24)	2
18	12689 A	NUT- Retainer	2
19	58308 B	SEAL- Shaft	1
20	31062	PIN- Dowel	1
21	• A 02121	COVER- CYLINDER	1
22	93397 A	SCREW- CYLINDER COVER	3
23	88057	SCREW- Hex Sems (10-24 X 2")	5
24	75078	KEY- Woodruff	1

TORQUE SPECIFICATIONS			
ITEM NO.	In/Lbs	Nm	REQUIRED LOCKTITE
1	20-30	2.3-3.4	262 Red
7	80-90	9.0-10.2	262 Red
22	Hand Tight		

NOTE 1: A-03611-A FOAM KIT

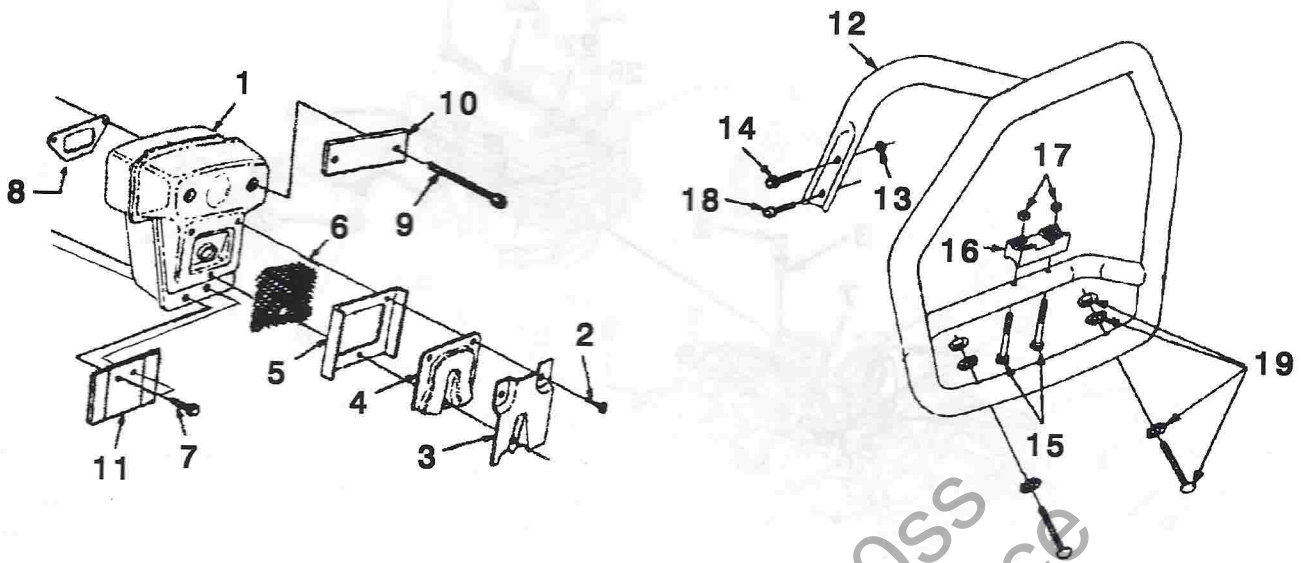
# ENGINE HOUSING



TORQUE SPECIFICATIONS			
ITEM NO.	In/Lbs	Nm	REQUIRED LOCKTITE
4	50-60	5.6-6.7	262 Red

N	PN	D	Q
1	A 49770 A	HOUSING- Engine	1
2	93410 A	TANK VENT FILTER	2
3	96841	VALVE- Duck Bill	1
4	96620	SCREW- Torx Truss (10-24 X 1/2")	2
5	97290 2A	ADAPTOR- Carburetor	1
6	97291	GASKET- Carburetor	1
7	93112 3B	TUBING- Rubber (Fuel Line, 9 1/2")	1
8	93157 23	TUBING- Rubber (Pulse Line, 6 1/2")	1
9	93385 A	TRIGGER- Lock	1
10	97265	SPRING- Flat	1
11	97292 1	ROD- Choke	1
12	64862	GROMMET	1
13	86324	PIN- Cotter	1
14	68548	PIN- Trigger	1
15	97305 2	ISOLATOR- Vibration	6
16	97262	SLEEVE- Flanged	6
17	97306 A	COVER, Switch	1
18	A 57650 A	SWITCH- Toggle	1
19	72084 A1	NUT- Hex	1
20	12893	PLATE- Indicating	1
21	93842	TRIGGER- Throttle	1
22	69889	BOOT- Throttle Rod	1
23	97294 A	ROD- Throttle	1
24	68548	PIN- Trigger	1
25	95671	PIN- Throttle Lock	1
26	95020	SPRING- Compression	1
27	95989	BUSHING- Flanged	1
28	58409	RING- Retaining	1
29	A 03131	FUEL CAP	1
30	A 97700	FUEL FILTER	1
31	59253 1A	FILTER ELEMENT	1

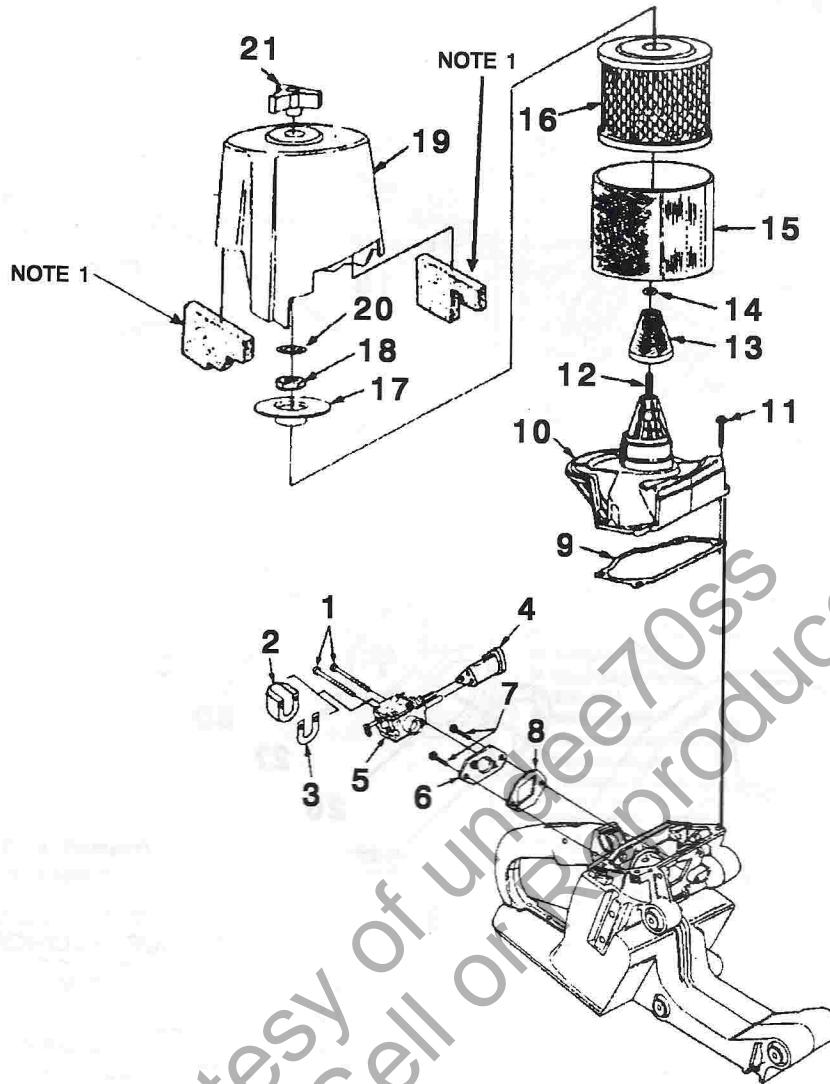
# MUFFLER - HANDLEBAR



N	PN	D	Q
1	A 04430	MUFFLER ASSY.	1
2	80983	SCREW- Mach. Hex (8-32 X 1/2")	3
3	A 49545	SHIELD- Muffler	1
4	49525	CAP- Muffler	1
5	49548	SUPPORT- Spark Arrestor	1
6	98827	SCREEN- Spark Arrestor	1
7	82555 1	SCREW- Truss Hd. (10-24 X 3/4")	2
8	97682 B	GASKET- Muffler	1
9	82592	SCREW- Cap Hex Hd. (1/4-20 X 3 1/4")	2
10	04423	SHIELD- Muffler Cover	1
11	04431 A	PLATE- Retaining	1
12	A 49595 1	HANDLE BAR	1
13	81208	NUT- Hex Lock (10-24)	2
14	82555 1	SCREW- Truss Hd. (10-24 X 3/4")	1
15	96212	NUT- Locking (1/4-28")	2
16	49622 2	BRACKET- Handle Bar	1
17	82532	SCREW- Mach. Oval Hd. (1/4-20 X 1/2")	2
18	96620	SCREW- Truss Torx (T25)	2
19	A 03633	WEAR PAD KIT	1

TORQUE SPECIFICATIONS			
ITEM NO.	In/Lbs	Nm	REQUIRED LOCKTITE
2	25-30	2.8-3.4	
9	100-140	11.3-15.8	
14	60-70	6.7-7.9	
17	120-140	13.5-15.8	262 Red
18	60-70	6.7-7.9	262 Red

# CARBURETOR - AIR CLEANER

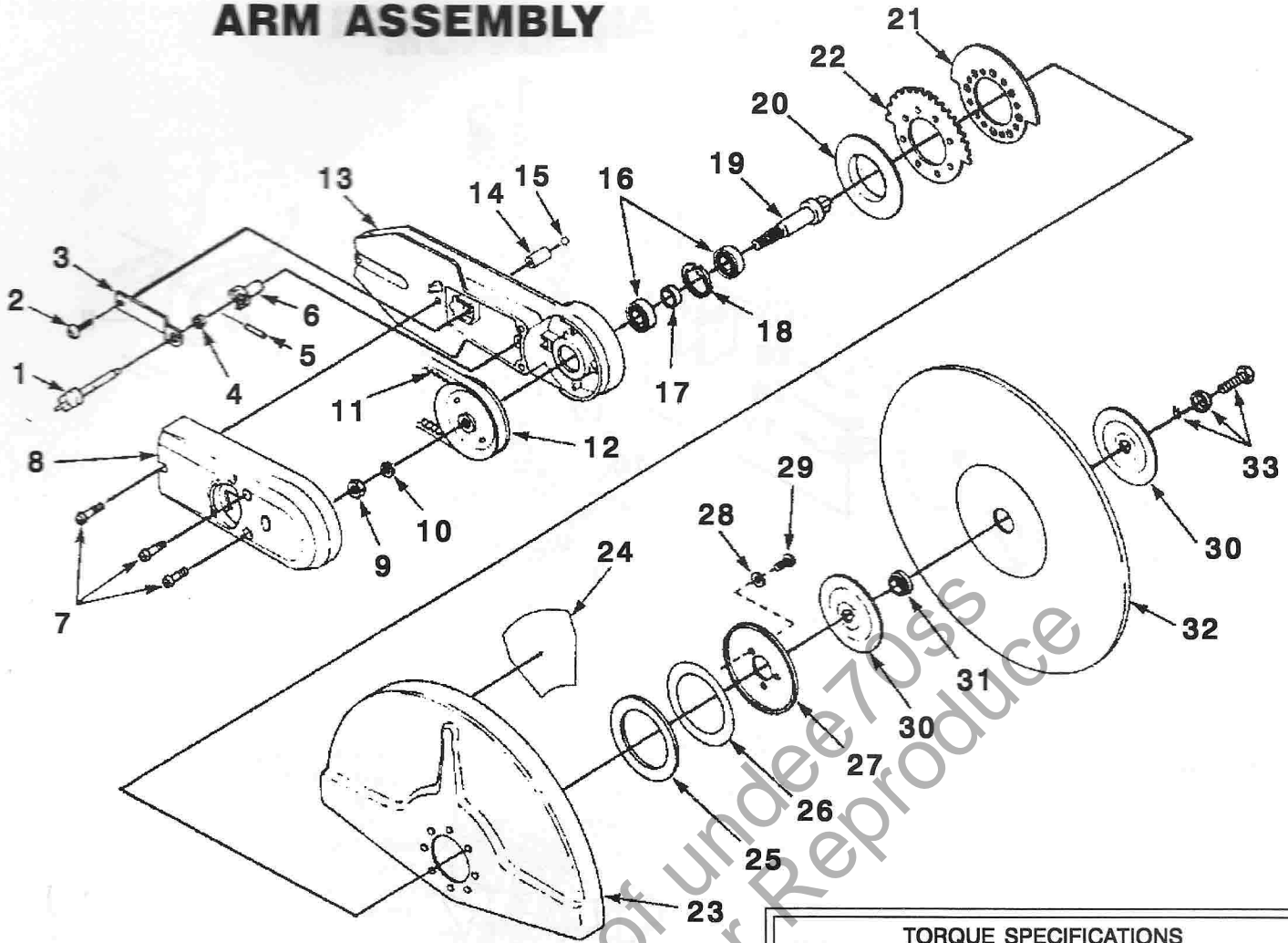


TORQUE SPECIFICATIONS			
ITEM NO.	In/Lbs	Nm	REQUIRED LOCKTITE
1	40-50	4.5-5.6	262 Red
7	30-40	3.4-4.5	262 Red
11	30-40	3.4-4.5	242 Blue

N	PN	D	Q
1	82527	SCREW- Hex Cap (10-14 X 2")	2
2	49673 2	SHIELD- Carburetor	1
3	49671	GASKET- Carburetor Shield	1
4	97295	GROMMET	2
5	A 49510 A	CARBURETOR	1
6	A 97290 2A	ADAPTER- Carburetor	1
7	96620	SCREW- Torx Truss (10-24 X 1/2")	2
8	97291	GASKET- Carburetor	1
9	97298	GASKET- Carb. Chamber	1
10	49509 A	COVER- Carb. Chamber	1
11	80582	SCREW- Pan Hd. (8-32 X 5/8")	4
12	49511 A	BOLT	1
13	49555	FILTER- Air	1
14	94150	"O" Ring	2
15	49513	FELT PREFILTER	1
16	49512	ELEMENT- Air Filter	1
17	49898 1	AIR FILTER ELEMENT COVER	1
18	81162	NUT- Hex (5/16-18)	1
19	• A 49514 A	FILTER COVER	1
20	06365	KNOB	1
21	46072	RETAINING RING	1

NOTE 1: A-03611-A FOAM KIT

# ARM ASSEMBLY



## TORQUE SPECIFICATIONS

ITEM NO.	In/Lbs	Nm	REQUIRED LOCKTITE
2	50-60	5.6-6.8	RED 262
7	30-40	3.4-4.5	
9	480-600	54-68	RED 262
29	50-60	5.6-6.8	RED 262
33	200-240	23-27	

N	PN	D	Q
1	• A 00660	KNOB & PIN	1
2	96620 1	SCREW-Truss Hd. (10-24 X 1/2")	1
3	01923	PLATE-Spring	1
4	01922	SPACER-Adjusting Pin	1
5	JA 46135 9	PIN-Roll	1
6	01921	SLEEVE-Cam	1
7	95792	SCREW-Round Hd. (10-24 X 23/32")	3
8	07704	BELT-Cover	1
9	02423	NUT-Hex	1
10	JA 44614 8	WASHER-Lock (7/16)	1
11	46068	BELT- V-Drive	1
12	A 02891	PULLEY & HUB	1
13	07656 3A	ARM-Wheel	1
14	02267	SNUBBER	1
15	00568	STEEL BALL	1
16	63107	BEARING-Ball	2
17	01916	SPACER-Bearing	1
18	31746	RING-Retaining	1
19	01906 1	SHAFT-Wheel	1
20	01915	COLLAR-Wheel Guard	1
21	01914 A	PAD-Adjuster	1
22	01913	DETENT-Adjuster	1
23	• A 04647 A	WHEEL GUARD & DECAL / 12"	1
24	04645 A	DECAL-Caution	1
23	• A 07696 A	WHEEL GUARD & DECAL / 14"	1
24	04645 A	DECAL-Caution	1

N	PN	D	Q
25	01912	WASHER-Rubber	1
26a	01911 01	SHIM-.020"	1
26b	01911 02	SHIM-.030" (Alt. Part)	0
27	01910	WASHER-Spring	1
28	95935	WASHER (#12 - 11/16)	3
29	96620 1	SCREW-Truss Hd. (10-24 X 1/2")	3
30	01909 1A	FLANGE-Wheel	1
31	01902	SPACER (1")	1
	01903	SPACER (22mm)	1
	01907	SPACER (20mm)	1
32	*	WHEEL	1
33	A 03412	BOLT & WASHER	1

- \* See Page 9.
- \* Voir page 9.
- \* Zie pagina 9.
- \* Siehe Seite 9.
- \* Vedi pagina 9.
- \* Consulte la Página 9.
- \* Veja a página 9.



WHEELS  
MEULES  
WIELEN  
RUNDSÄGEBLÄTTER  
RUOTE  
RUEDAS  
RODAS

ACCESSORIES  
ACCESSOIRES  
TOEBEHOREN  
ZEBEHÖR  
ACCESSORI  
ACCESORIOS  
ACCESÓRIOS

<b>WHEELS - Abrasive</b> <b>MEULES - Abrasive</b> <b>WIELEN - Schuurmiddel</b> <b>RUNDSÄGEBLÄTTER - Schleifkörper</b> <b>RUOTE - Abrasivo</b> <b>RUEDAS - Abrasivas</b> <b>RODAS - Abrasivo</b>	Part No. Pièce N° Pièce N° Teil Nr. Pezzo N° No. de pieza N° da peça	<b>WHEELS - Diamond</b> <b>MEULES - Diamant</b> <b>WIELEN - Diamant</b> <b>RUNDSÄGEBLÄTTER - Diamand</b> <b>RUOTE - Diamante</b> <b>RUEDAS de Diamante</b> <b>RODAS - Diamante</b>	Part No. Pièce N° Pièce N° Teil Nr. Pezzo N° No. de pieza N° da peça
<b>METAL - (12" x 1"*)</b> <b>Métal - (305mm x 25.4mm*)</b> <b>Metaal</b> <b>Metall</b> <b>Metalli</b> <b>Metal</b> <b>Metal</b>	64597 BS	<b>CONCRETE - (12" x 1"*)</b> <b>Béton - (305mm x 25.4mm*)</b> <b>Beton</b> <b>Beton</b> <b>Calcestruzzo</b> <b>Concreto</b> <b>Cimento</b>	A 49751 A
<b>DUCTILE - (12" x 1"*)</b> <b>Ductile - (305mm x 25.4mm*)</b> <b>Buigbaar</b> <b>Flexibel</b> <b>Duttili</b> <b>Dúctil</b> <b>Dúctil</b>	68421 AS	<b>CONCRETE - (14" x 1"*)</b> <b>Béton - (356mm x 25.4mm*)</b> <b>Beton</b> <b>Beton</b> <b>Calcestruzzo</b> <b>Concreto</b> <b>Cimento</b>	A 49572 A
<b>CONCRETE - (12" x 1"*)</b> <b>Béton - (305mm x 25.4mm*)</b> <b>Beton</b> <b>Beton</b> <b>Calcestruzzo</b> <b>Concreto</b> <b>Cimento</b>	64596 BS	<div style="border: 1px solid black; padding: 5px;"> <ul style="list-style-type: none"> <li>* ARBOR SIZE</li> <li>* Dimension d'arbre</li> <li>* Spilmaat</li> <li>* Wellengröße</li> <li>* Dimensioni del mandrino</li> <li>* Tamaño del eje</li> <li>* Tamanho do eixo de montagem</li> </ul> </div>	
<b>CONCRETE - (12" x 20mm*)</b> <b>Béton - (305mm x 20mm*)</b> <b>Beton</b> <b>Beton</b> <b>Calcestruzzo</b> <b>Concreto</b> <b>Cimento</b>	49826	<b>ACCESSORIES</b> <b>ACCESSOIRES</b> <b>TOEBEHOREN</b> <b>ZEBEHÖR</b> <b>ACCESSORI</b> <b>ACCESORIOS</b> <b>ACCESÓRIOS</b>	Part No. Pièce N° Pièce N° Teil Nr. Pezzo N° No. de pieza N° da peça
<b>DUCTILE - (12" x 20mm*)</b> <b>Ductile - (305mm x 20mm*)</b> <b>Buigbaar</b> <b>Flexibel</b> <b>Duttili</b> <b>Dúctil</b> <b>Dúctil</b>	49825	<b>SILASTIC :</b> <b>Silastic</b> <b>Vloeibare pakking</b> <b>Silastic</b> <b>Silastic</b> <b>Silastic</b> <b>Silastic (Cola silatica)</b>	24823
<b>METAL - (12" x 20mm*)</b> <b>Métal - (305mm x 20mm*)</b> <b>Metaal</b> <b>Metall</b> <b>Metalli</b> <b>Metal</b> <b>Metal</b>	49824	<b>DOLLY KIT :</b> <b>Jeu pour chariot</b> <b>Dolly Kit</b> <b>Schubkarre - Bausatz</b> <b>Carrello</b> <b>Juego de carretilla</b> <b>Descanso com rodas</b>	UT 05032 B
<b>DUCTILE - (14" x 1"*)</b> <b>Ductile - (356mm x 25.4mm*)</b> <b>Buigbaar</b> <b>Flexibel</b> <b>Duttili</b> <b>Dúctil</b> <b>Dúctil</b>	49560	<b>CARRY CASE w / Insert :</b> <b>Boitier porteur avec insertion</b> <b>Set voor nat snijden</b> <b>Schutztasche mit Einlage</b> <b>Custodia con inserto</b> <b>Maleta con inserto</b> <b>Estojo portatil com o molde da peça</b>	A 18009 A
<b>METAL - (14" x 1"*)</b> <b>Métal - (356mm x 25.4mm*)</b> <b>Metaal</b> <b>Metall</b> <b>Metalli</b> <b>Metal</b> <b>Metal</b>	49561	<b>WET CUTTING KIT :</b> <b>Jeu pour découpe humide</b> <b>Koffer met voering</b> <b>Einsatz zum Naßsägen</b> <b>Kit per l'irrorazione</b> <b>Juego de corte liquido</b> <b>Jogo para corte em humido</b>	A 49649

**TOOLS  
OUTILS  
GEREEDSCHAP  
WERKZEUG  
UTENSILE  
HERRAMIENTAS  
FERRAMENTA**

<b>TOOLS OUTILS GEREEDSCHAP WERKZEUG UTENSILE HERRAMIENTAS FERRAMENTA</b>	<b>Part No. Pièce N° Pièce N° Teil Nr. Pezzo N° No. de pieza N° da peça</b>	<b>TOOLS OUTILS GEREEDSCHAP WERKZEUG UTENSILE HERRAMIENTAS FERRAMENTA</b>	<b>Part No. Pièce N° Pièce N° Teil Nr. Pezzo N° No. de pieza N° da peça</b>
<b>SHIM - Air Gap</b> : .....	24306	<b>SCREW DRIVER</b> : .....	24541
<b>Cale - Cale d'espacement</b>		<b>Tournevis</b>	
<b>Afstandsbus - Luchtonderbreking</b>		<b>Schroevendraaier</b>	
<b>Distanzscheibe - Luftspalt</b>		<b>Schraubendreher</b>	
<b>Spessore - Spazio libero</b>		<b>Cacciavite</b>	
<b>Suplemento - Espacoi de aire</b>		<b>Destornillador</b>	
<b>Calço - Abertura</b>		<b>Chave de fenda</b>	
<b>BIT - Torx (1/4" Shank)</b> : .....	24982 01	<b>WRENCH - Combination (1/2", 3/4" Screwdriver)</b>	19188
<b>Mèche Torx avec tige de (0,64cm)</b>		<b>Clé combiné - (1,25 cm, 1,9 cm, Tournevis)</b>	
<b>Schroevendraaierbit (1/4" schacht)</b>		<b>Combinatie-moersleutel -</b>	
<b>Bohrstückhalter (1/4 Zoll)</b>		(1/2" schacht, 3/4" schacht, Schroevendraaier)	
<b>Punta torx (1/4")</b>		<b>Schraubenschlüssel Kombination -</b>	
<b>Broca torx con vastago de (0,64cm)</b>		(1/2 Zoll, 3/4 Zoll, Schraubendreher)	
<b>Chave de fenda de torção de 1/4 pol. com cabo</b>		<b>Chiave combinata - (1/2", 3/4", Cacciavite)</b>	
<b>BIT - Torx (5/16" Shank)</b> : .....	24982 02	<b>Llave combinada - (1,25 cm, 1,9 cm, Destornillador)</b>	
<b>Mèche Torx avec tige de (0,79cm)</b>		<b>Chave inglesa com variedade de tamanhos - (1/2 pol., 3/4 pol., Chave de fenda)</b>	
<b>Schroevendraaierbit (5/16" schacht)</b>		<b>WRENCH - Clutch Spanner</b> : .....	A 23934
<b>Bohrstückhalter (5/16 Zoll)</b>		<b>Clé à griffe d'embrayage</b>	
<b>Punta torx (5/16")</b>		<b>Koppelingsmoersleutel</b>	
<b>Broca torx con vastago de (0,79cm)</b>		<b>Kupplungsschraubenschlüssel</b>	
<b>Chave de fenda de torção de 5/16 pol. com cabo</b>		<b>Chave per ghiere</b>	
<b>PULLER - Rotor</b> : .....	A 24544 A	<b>Llave de apretar tuercas para el embrague</b>	
<b>Extracteur de rotor</b>		<b>Chave inglesa da embreagem</b>	
<b>Verwijderingsapparaat - Rotor</b>		<b>WRENCH - 1/2" Forged</b> : .....	03000
<b>Abzieher - Rotor</b>		<b>Clé en acier forgé de 1/2 pouce</b>	
<b>Estrattore - Girante</b>		<b>Steutel - gesmeed (1,27 cm)</b>	
<b>Extractor - Rotor</b>		<b>Schraubenschlüssel - 1,27 cm geschmiedet</b>	
<b>Extrator - Rotor</b>		<b>Chave - Fucinata 1/2 pollice</b>	
W/SCREW-Mach. Hex Head (12-24 x 1 1/2") .....	80868	<b>Llave - Forjado (1,27 cm)</b>	
SCREW-Mach. Hex Head (12-24 x 1 1/2") .....	80627	<b>Chave inglesa - Forgada de 1/2 pol.</b>	
WASHER-Flat .....	84006		
NUT-Hex .....	81068		
<b>Wheel Arm - Complete</b> : .....			
<b>Compléter l'assemblage du bras de support de roue</b>			
<b>Complete wielarm</b>			
<b>Bauen Sie den Gerätearm zusammen</b>			
<b>Braccio completo della ruota</b>			
<b>Complete el brazo de la rueda</b>			
<b>Articulador da roda completo</b>			
12" X 1" (305mm x 25.4mm) .....	A 08337 A		
14" X 1" (356mm x 25.4mm) .....	A 08338 A		

- GB NOTES
- F NOTES
- NL OPMERKINGEN
- D NOTIZEN
- I NOTE
- E NOTAS
- P NOTAS

**MP88**  
**MP88i**

Courtesy of undee70ss  
Do Not Sell or Reproduce

**HEADQUARTERS**  
Homelite, Inc.  
P.O. BOX 7047  
CHARLOTTE, N.C. 28241

**OVERSEAS OFFICES**  
**EUROPE, AFRICA & MIDDLE-EAST**

Homelite Netherlands B.V.  
A Deere & Company Affiliate  
Haverstraat 24  
2153 GB Nieuw Vennepe  
The Netherlands

**FRANCE**

Homelite Atlantic SARL  
Groupe Deere & Co.  
BP 7011  
95050 Cergy Pontoise Cedex  
France

**AUSTRALIA**

Homelite Pacific Ltd.  
A Deere & Company Affiliate  
ACN 008 683 538  
94 Rushdale Street  
P.O. Box 555 MDA  
Australia

**CANADIAN OFFICES**

**Homelite Canada Limited**  
**Homelite Canada Limitée**

A Deere & Company Affiliate/  
Une Filiale de Deere & Company  
1850-55e/th Avenue  
Lachine, Québec, Canada H8T 3J5  
1-800-363-5715

UNIT 212-214, 590 Ebury Place  
New Westminster, B.C. V3M 6K7  
1-800-667-3128

20-D Voyager Court South  
Etobicoke, Ontario M9W 5M7  
1-800-465-2249

**Homelite** inc.  
A Subsidiary of Deere & Company