

Homelite®

GB PARTS LIST

F LISTE DE PIÈCES

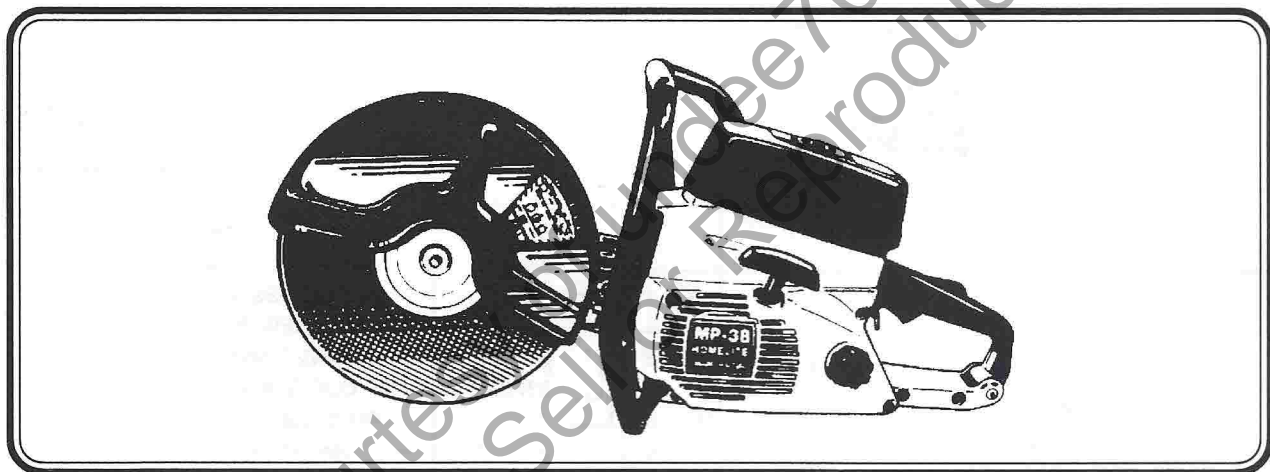
NL ONDERDELENLIJST

D TEILELISTE

I ELENCO DEI PEZZI

E LISTA DE PIEZAS

P LISTA DE PEÇAS



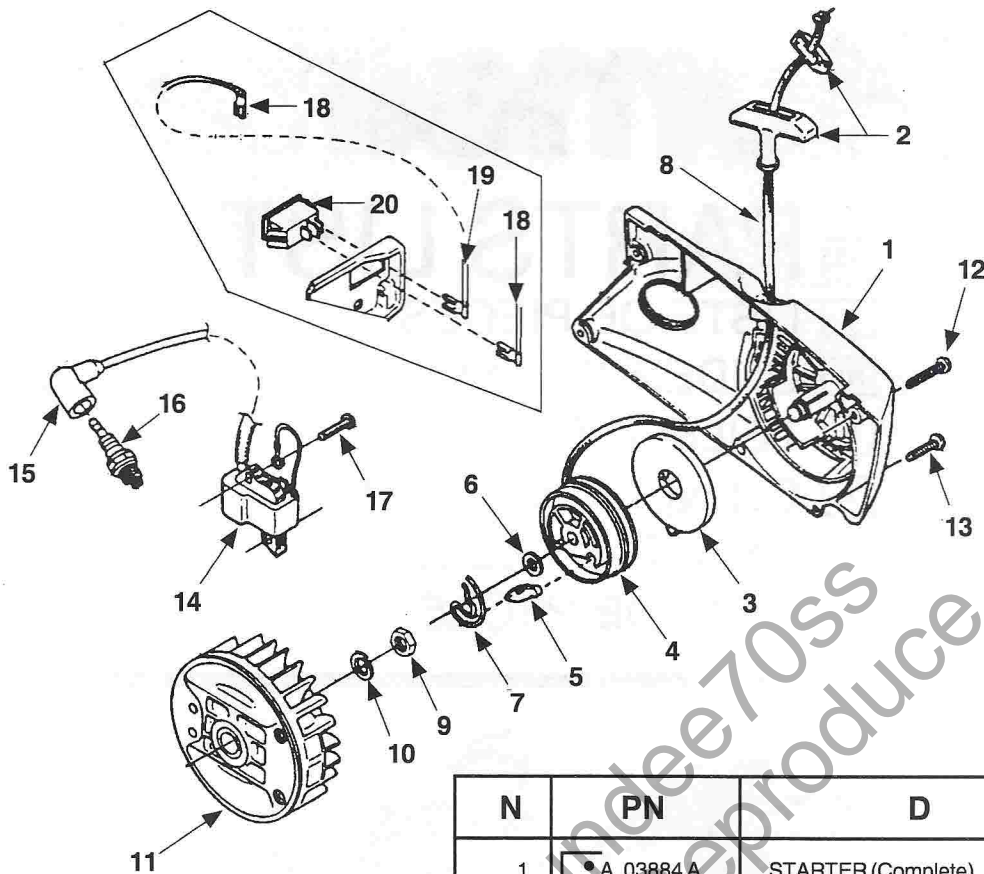
MP38
UT05057

MP38i
UT05061

Printed in U.S.A.
Imprimé aux. E.-U.
Gedruckt in de V.S.
Gedruckt in den U.S.A.
Stampato negli Stati Uniti
Impreso en EE. UU.
Impresso nos E.U.A.

P/N 19815

STARTER-IGNITION



DESCRIPTION — D

No.
N°
Nr.
N°
No.
N°

Part No.
Pièce N°
Stuknummer
Teil Nr.
Pezzo N°
No. de pieza
N° da peça

Assemblies
Ensembles
Assemblages
Bausätze
Compressi
Conjuntos
Conjuntos

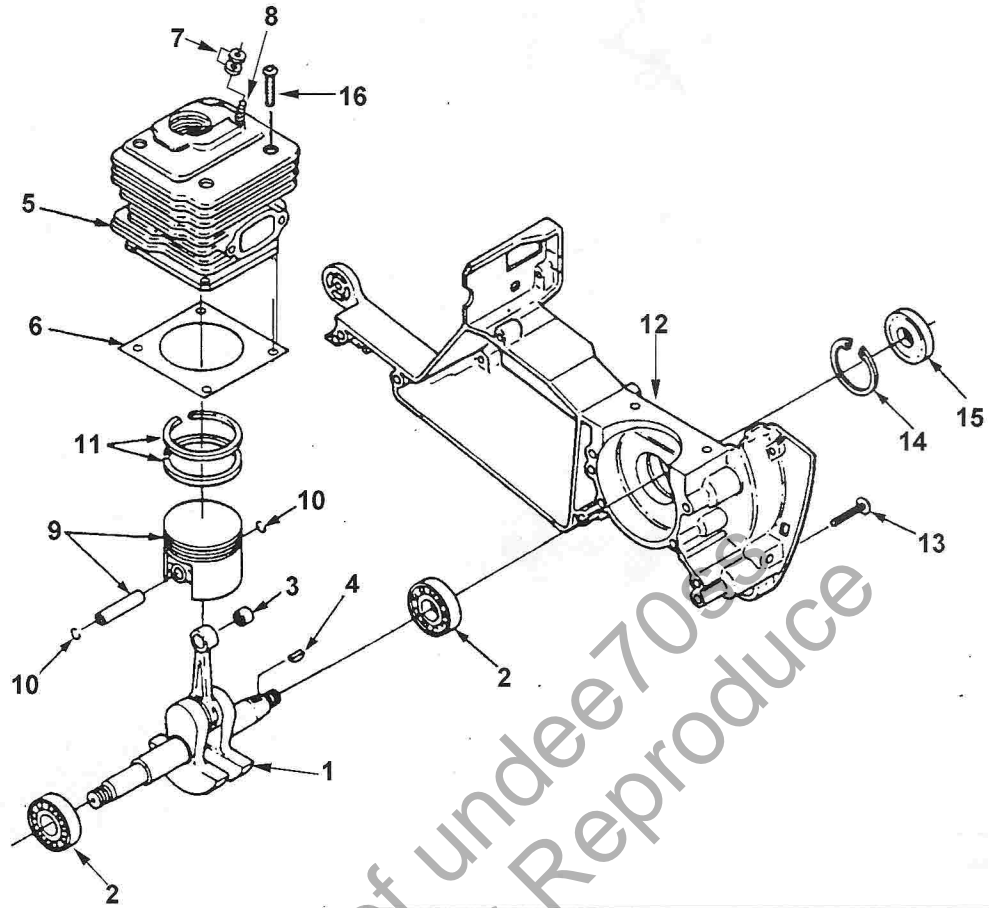
Quantity
Quantité
Aantal
Menge
Quantità
Cantidad
Quantidade

N	PN	D	Q
1	• A 03884 A	STARTER (Complete)	1
2	A 69962 B	GRIP- Starter (w/insert)	1
3	A 97908	SPRING & CONTAINER	1
4	• A 03882	PULLEY ASSEMBLY	1
5	01274	WASHER-Thrust	1
6	98332 A	PAWL-Starter	1
7	03750 B	CLIP-Retainer	1
8	97500	ROPE-Starter (45")	1
9	81124 A	NUT-Jam (3/8 - 24)	1
10	83102	WASHER-Lock (3/8")	1
11	02152 A	ROTOR	1
12	82556 1	SCREW-Truss Hd. (10-24 x 1 1/4")	1
13	82555 1	SCREW (10-24 x 3/4")	3
14	• A 03748 A	IGNITION MODULE (Sems/Walbro)	1
15	A 02597	SPARK PLUG BOOT KIT	1
16	93561 S	SPARK PLUG (CJ6Y)	1
	98217 S	SPARK PLUG (RCJ6Y) (Resistor)	1
17	82575	SCREW-Pan Hd (8-32 x 5/8")	2
18	A 03556	GROUND WIRE	1
19	A 02284	IGNITION GROUND WIRE	1
20	01802	SWITCH	1

TORQUE SPECS			
ITEM NO	In/Lbs	Nm	REQUIRED LOCKTITE
9	225	25.4	
12	55	6.2	
13	55	6.2	
17	20	2.2	RED 262

- *NOTE: Items #22 and #23 are also included with our part number A-03881-Cylinder and Piston Assembly.
- *NOTE: Les articles N° 22 et N° 23 font également partie de notre pièce N° A-03881, Ensemble cylindre et piston.
- *N.B.: Artikelen nr. 22 en 23 zijn ook inbegrepen bij ons stuknummer A-03881- cilinder met zuiger.
- *HINWEIS: Stücke #22 und #23 sind auch in unseren Zylinder/Kolben-Bausätzen der Teilenummer A-03881 inbegriffen.
- *NOTA: Gli articoli n° 22 e 23 fanno parte anche del nostro gruppo cilindro e pistone, n° di catalogo A-03881.
- *NOTA: Los artículos #22 y #23 también están incluidos en el número de pieza A-03881- Conjunto de cilindro pistón.
- *NOTA: Os artigos n° 22 e 23 estão também incluídos com a nossa peça número A-03881- Conjunto de Cilindro e Pistão.

ENGINE INTERNAL



TORQUE SPECS			
ITEM NO	In/Lbs	Nm	REQUIRED LOCKTITE
13	55	6.2	RED 262
16	85	9.6	RED 262

N	PN	D	Q
1	• A 03883	CRANKSHAFT	1
2	98797 1	BEARING-Ball	2
3	02151 A	BEARING-Piston Pin	1
4	75078	KEY-Woodruff	1
5	• A 03881	CYLINDER & PISTON ASSEMBLY	1
6	01568	GASKET-Cylinder	1
7	02425	SPACER	2
8	02346	STUD-(10-24 X 1 1/4")	5
9	• A 01273	PISTON (1.890 Dia.)	1
10	02161	RING-Retaining	2
11	02162	RING-Piston	2
12	• A 02272 B	CRANKCASE	1
13	82556 1	SCREW-Truss Hd. (10-24 X 1 1/4")	9
14	28922 1	RETAINER-Bearing	1
15	98197 A	SEAL-Main	2
16	82580	SCREW-Pan Hd (12-24 x 3/4")	4

No.
N°
Nr.
N°
No.
N°

N

Part No.
Pièce N°
Stuknummer
Teil Nr.
Pezzo N°
No. de pieza
N° da peça

PN

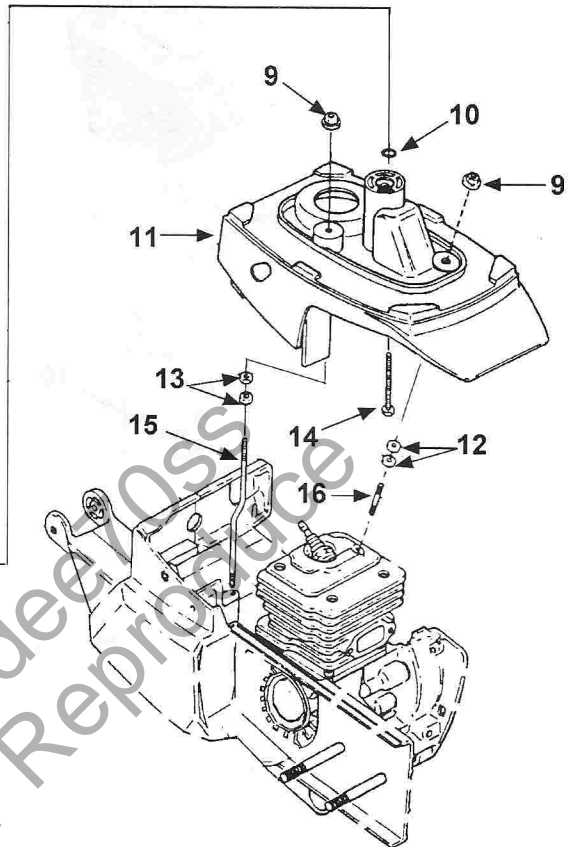
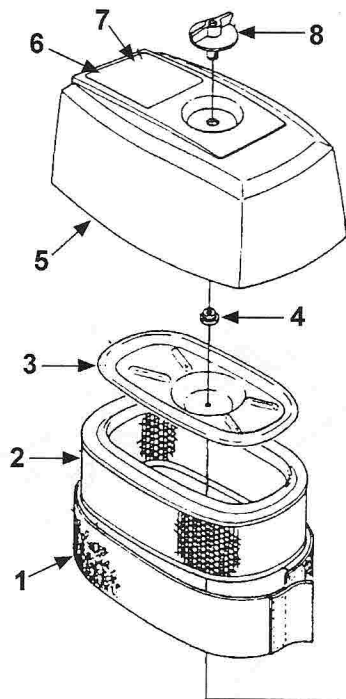
DESCRIPTION — D

Quantity
Quantité
Aantal
Menge
Quantità
Cantidad
Quantidade

Q

Assemblies
Ensembles
Assemblages
Bausätze
Complessi
Conjuntos
Conjuntos

AIR CLEANER



N	PN	D	Q
1	02307	PREFILTER-Felt	1
2	02308	ELEMENT-Air Filter	1
3	02309 1	COVER-Air Filter Element	1
4	02330	NUT-Hex Conical	1
5	• A 03880 A	COVER-Air Filter	1
6	03621	DECAL-Warning (French)	1
7	03620	DECAL-Warning (Eng.)	1
	04644	DECAL-Warning (Int.)	1
8	A 03024	KNOB & INSERT	1
9	02330	NUT-Hex	2
10	03383	O-Ring	1
11	02303 A	COVER-Cylinder	1
12	02425	SPACER-Insulating	2
13	81092	NUT-Hex	2
14	82584	SCREW-Hex Cap (10-24 X 1 3/4")	1
15	02347	STUD-Offset (10-24)	1
16	02346	STUD (10-24 x 1")	1

TORQUE SPECS			
ITEM NO	In/Lbs	Nm	REQUIRED LOCKTITE
4	40	4.5	
9	40	4.5	
15	Hand Tight		BLUE 242
16	15	1.6	

No.
N°
Nr.
Nr.
N°
No.
N°

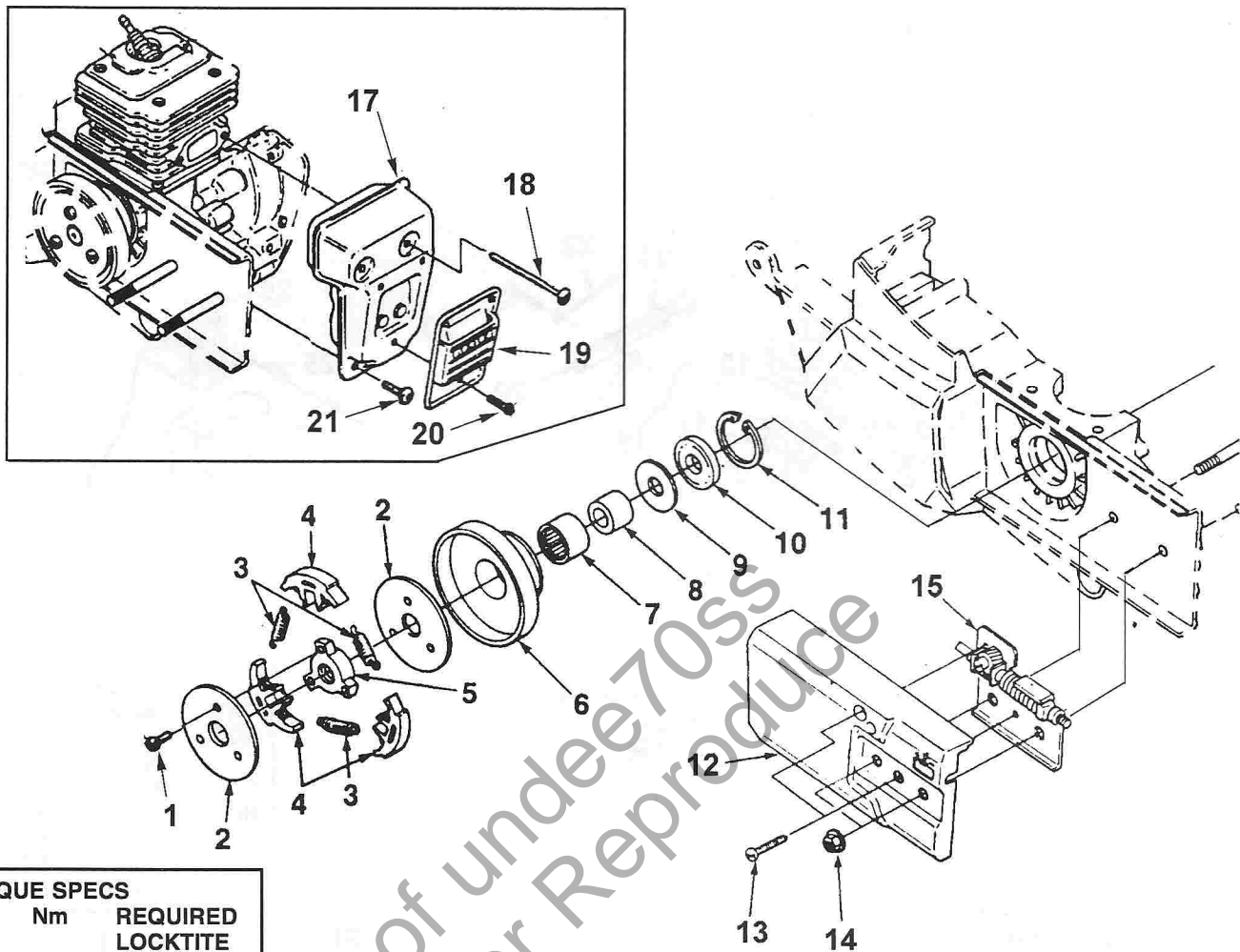
Part No.
Pièce N°
Stuknummer
Teil Nr.
Pezzo N°
No. de pieza
N° da peça

DESCRIPTION — D

Quantity
Quantité
Aantal
Menge
Quantità
Cantidad
Quantidade

Assemblies
Ensembles
Assemblages
Bausätze
Compressi
Conjuntos
Conjuntos

CLUTCH-EXHAUST SYSTEM



TORQUE SPECS			
ITEM NO	In/Lbs	Nm	REQUIRED LOCKTITE
1	55	6.2	BLUE 242
5	400	45.2	RED 262
13	20	2.2	
14	140	15.8	
18	55	6.2	
21	55	6.2	

N	PN	D	Q
1	82253	SCREW-Machine Hex Hd. (8-32 X 3/8")	3
2	93628	COVER-Clutch	2
3	93638 A	SPRING-Clutch	3
4	79239	SHOE-Clutch	3
5	02334	CLUTCH-Spider	1
6	A 49543	PULLEY-Drum & Bearing	1
7	46071	BEARING-Needle	1
8	46070	RACE-Inner	1
9	46135	WASHER-Thrust	1
10	98197 A	SEAL-Main	1

N	PN	D	Q
11	28922 1	RETAINER-Bearing	1
12	A 02329 A	CLUTCH-Cover	1
13	82575	SCREW- Taptite (8-32 x 5/8")	2
14	81282	NUT-Hex Flange (5/16-18)	2
15	A 03879 A	GEAR KIT	1
16	02327	BOLT-Wheel Arm	1
17	A 02287	MUFFLER	1
18	82574	SCREW-Truss Hd. (10-24 x 2 1/2")	2
19	A 98747	CAP- Muffler	1
20	80983	SCREW-Machine Hex Hd. (8-32 x 1/2")	3
21	96620 1	SCREW-Torx (10-24 x 1/2")	2

No.
N°
Nr.
Nr.
N°
No.
N°

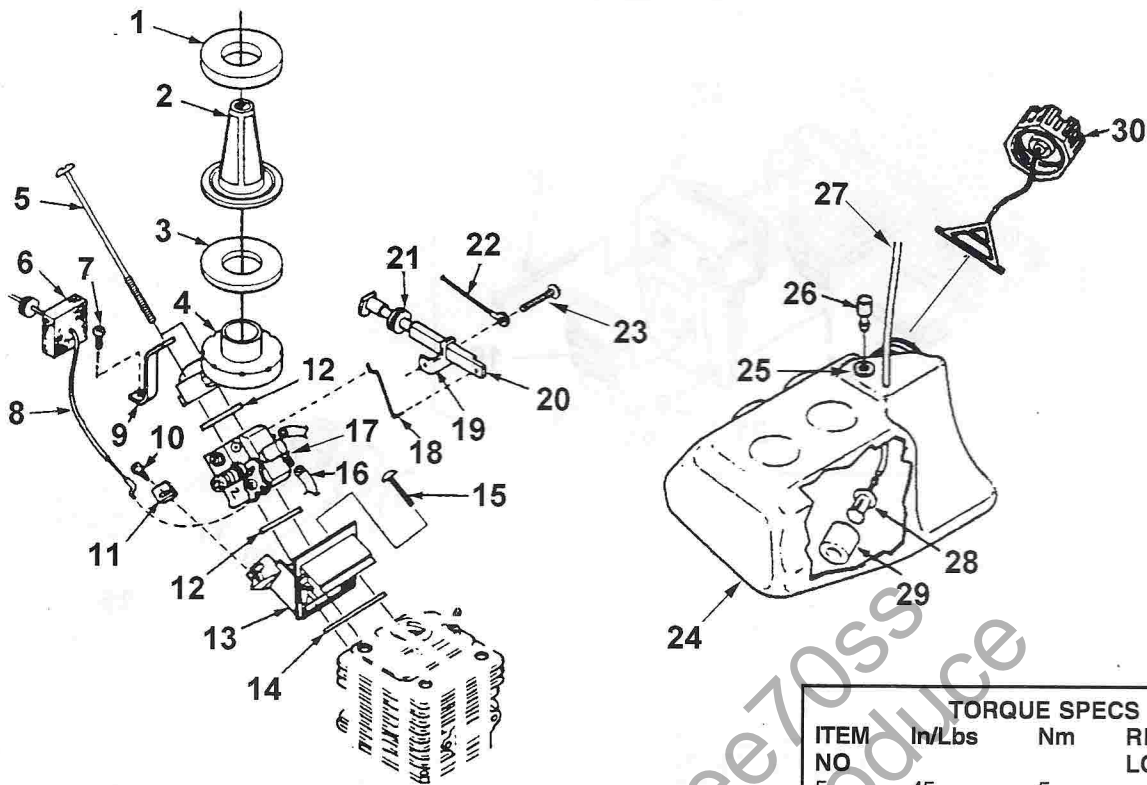
Part No.
Pièce N°
Stuknummer
Teil Nr.
Pezzo N°
No. de pieza
N° da peça

DESCRIPTION — D

Quantity
Quantité
Aantal
Menge
Quantità
Cantidad
Quantidade

Assemblies
Ensembles
Assemblages
Bausätze
Complèssi
Conjuntos
Conjuntos

CARBURETOR-FUEL TANK



TORQUE SPECS			
ITEM NO	In/Lbs	Nm	REQUIRED LOCKTITE
5	45	5	
7	65	7.3	
10	15	1.7	
15	45	5	RED 262
23	55	6.2	

N	PN	D	Q
1	02300	GASKET-Foam (1/4")	1
2	02301	FILTER-Screen	1
3	02302	GASKET-Foam	1
4	A03272	ADAPTOR-Intake	1
5	82582	SCREW-Truss Hd. (8-16 X 3 1/4")	2
6	03758	PAD-Foam	1
7	96620 1	SCREW-Torx (10-24 X 1/2")	1
8	A02315	CABLE-Throttle	1
9	02313 A	BRACKET-Air Intake	1
10	82513	SCREW-Thread Form. (6-19 X 1/2")	1
11	03455	BRACKET-Cable End	1
12	02297	GASKET-Adaptor	2
13	02296 1	ADAPTOR-Intake	1
14	02295	GASKET-Carburetor	1
15	82571	SCREW-Pan Hd. (10-24 X 1")	3
16	93157 19	TUBING,Pulse line (4 3/4")	1

N	PN	D	Q
17	A02298 B	CARBURETOR-Walbro	1
	03757	GROMMET-Hi-Lo (Not Shown)	1
18	A06369	CHOKE LINK & RETAINER	1
19	03333	BRACKET-Cable	1
20	02314	ROD-choke	1
21	64862	GROMMET	1
22	A03556	GROUND WIRE	1
23	82556 1	SCREW-Truss Hd. (10-24 X 1 1/4")	1
24	• A03402 A	TANK-Fuel	1
25	64862	GROMMET	1
26	A02294	FILTER SLEEVE (Complete)	1
27	94772 40	TUBING-Rubber (10")	1
28	• A97700	FILTER-Fuel	1
29	59253 1A	FILTER-Fuel	1
30	A00904 A	CAP-Tank (w/Retainer)	1

No.
N°
Nr.
N°
No.
N°

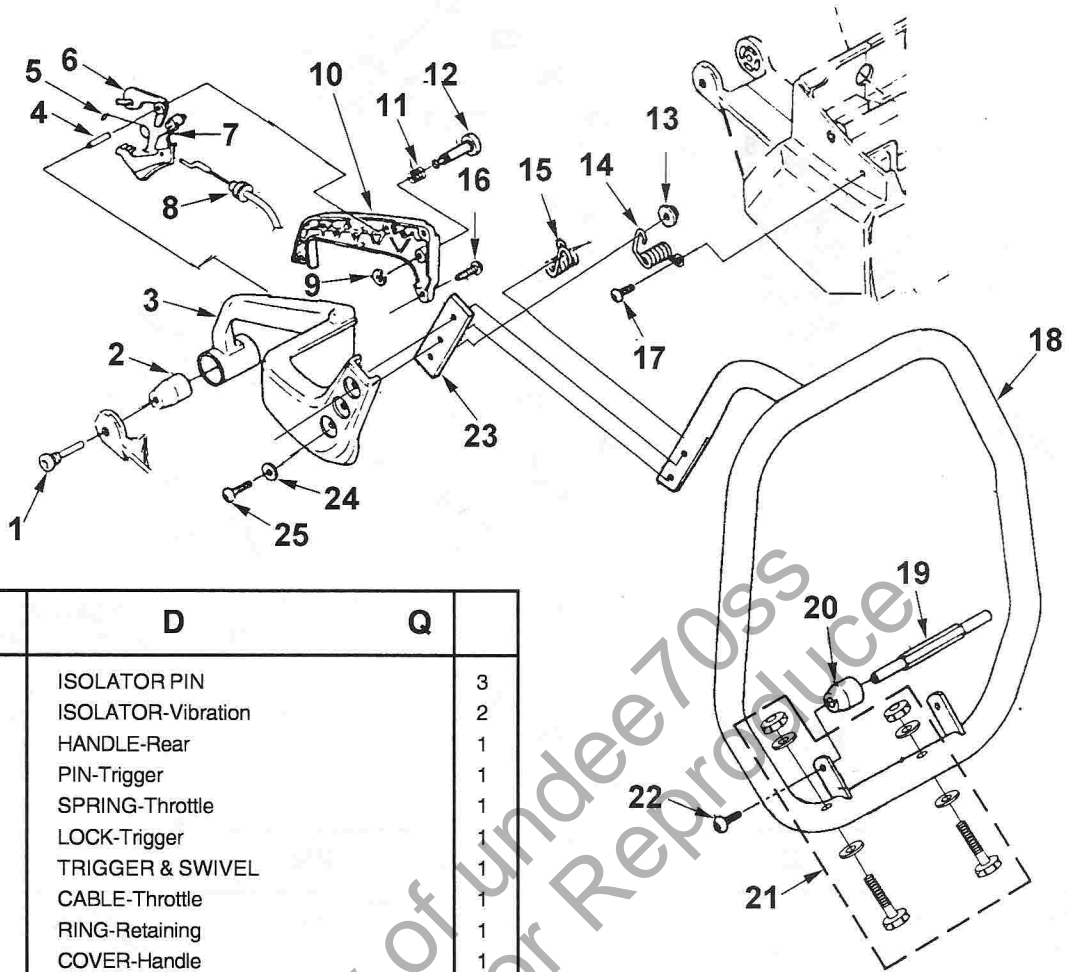
Part No.
Pièce N°
Stuknummer
Teil Nr.
Pezzo N°
No. de pieza
N° da peça

DESCRIPTION — D

Quantity
Quantité
Aantal
Menge
Quantità
Cantidad
Quantidade

Assemblies
Ensembles
Assemblages
Bausätze
Complessi
Conjuntos
Conjuntos

HANDLES



N	PN	D	Q
1	93367	ISOLATOR PIN	3
2	93368 A	ISOLATOR-Vibration	2
3	02318	HANDLE-Rear	1
4	68548	PIN-Trigger	1
5	02316	SPRING-Throttle	1
6	93385 A	LOCK-Trigger	1
7	A03806 A	TRIGGER & SWIVEL	1
8	A02315	CABLE-Throttle	1
9	58409	RING-Retaining	1
10	02319	COVER-Handle	1
11	95020	SPRING-Compression	1
12	95671	PIN-Throttle Lock	1
13	02330	NUT-Hex (10-24)	1
14	03535	SPRING-Isolation (Large)	1
15	03536	SPRING-Isolation (Small)	1
16	82536	SCREW-Plastite (8-16 x 5/8")	4
17	96620 1	SCREW-Torx Hd. (10-24 X 1/2")	4
18	A08326	HANDLE BAR	1
19	02277 A	SPACER	1
20	97305 1A	ISOLATOR-Vibration	2
21	A03633	KIT-WearPad	1
22	96620 1	SCREW-Torx Hd. (10-24 x 1/2")	2
23	03078	STRAP, Reinforcing	2
24	95935	WASHER (#12-11/16)	3
25	82355 1	SCREW-Truss Hd. (10-24 x 3/4")	3

TORQUE SPECS			
ITEM NO	In/Lbs	Nm	REQUIRED LOCKTITE
1	60	6.8	ANTI SEIZE
13	40	4.5	
16	35	3.9	
17	55	6.2	
22	55	6.2	

No.
N°
Nr.
Nr.
N°
No.
N°

N

Part No.
Pièce N°
Stuknummer
Teil Nr.
Pezzo N°
No. de pieza
N° da peça

PN

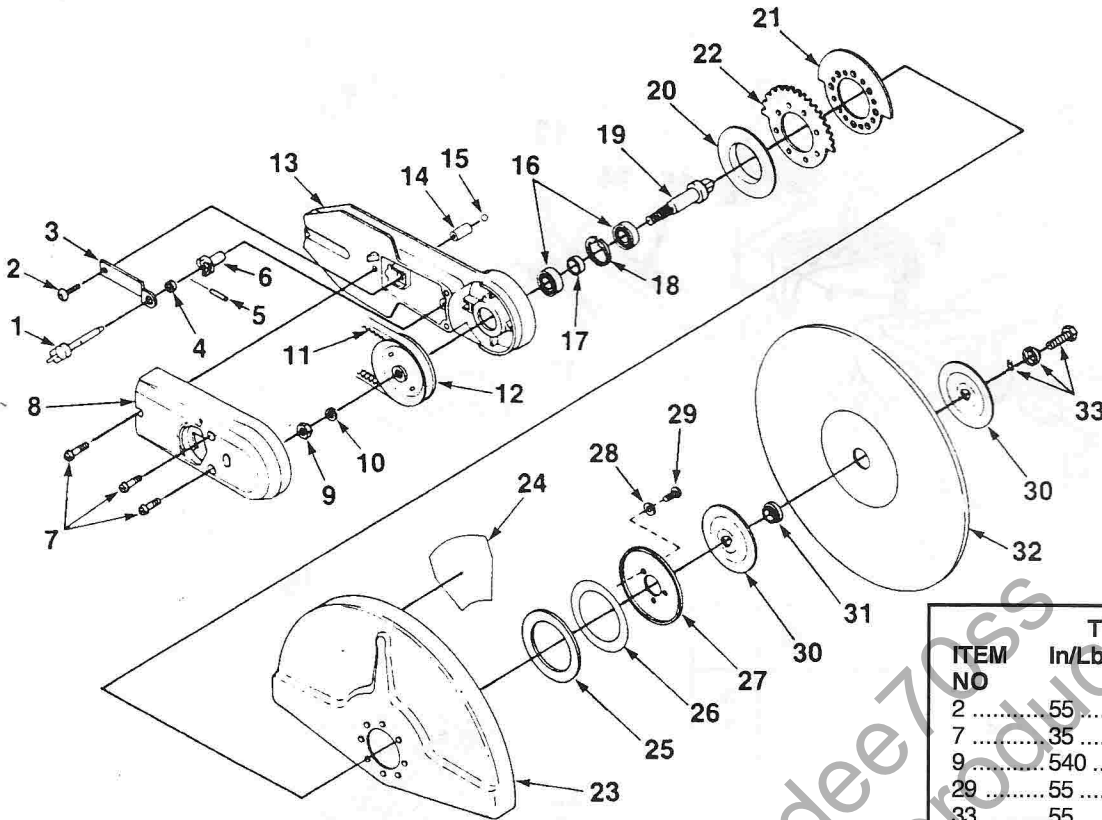
DESCRIPTION D

Quantity
Quantité
Aantal
Menge
Quantità
Cantidad
Quantidade

Q

Assemblies
Ensembles
Assemblages
Bausätze
Complessi
Conjuntos
Conjuntos

WHEEL ARM ASSEMBLY



TORQUE SPECS			
ITEM NO	In/Lbs	Nm	REQUIRED LOCKTITE
2	55	6.2	RED 262
7	35	3.9	
9	540	6.1	RED 262
29	55	6.2	
33	55	6.2	

N	PN	D	Q	N	PN	D	Q
1	• A 00660	KNOB & PIN	1	23	• A 04647 A	WHEEL GUARD & DECAL / 12"	1
2	96620 1	SCREW-Truss Hd. (10-24 X 1/2")	1	24	04645 A	DECAL-Caution	1
3	01923	PLATE-Spring	1	23	• A 07696 A	WHEEL GUARD & DECAL / 14"	1
4	01922	SPACER-Adjusting Pin	1	24	04645 A	DECAL-Caution	1
5	JA 46135 9	PIN-Roll 1	1	25	01912	WASHER-Rubber	1
6	01921	SLEEVE-Cam	1	26a	01911 01	SHIM-.020"	1
7	95792	SCREW-Round Hd. (10-24 X 23/32")	3	26b	01911 02	SHIM-.030" (Alt. Part)	0
8	07704	BELT-Cover	1	27	01910	WASHER-Spring	1
9	02423	NUT-Hex	1	28	95935	WASHER (#12 - 11/16)	3
10	JA 44614 8	WASHER-Lock (7/16)	1	29	96620-1	SCREW-Truss Hd. (10-24 X 1/2")	3
11	46068	BELT-V-Drive	1	30	01909-1A	FLANGE-Wheel	1
12	A 02891	PULLEY & HUB	1	31	01902	SPACER (1")	1
13	07656 3	ARM-Wheel	1		01903	SPACER (22mm)	1
14	02267	SNUBBER	1		01907	SPACER (20mm)	1
15	00568	STEEL BALL	1	32	*	WHEEL	1
16	63107	BEARING-Ball	2	33	A-03412	BOLT & WASHER	1
17	01916	SPACER-Bearing	1				
18	31746	RING-Retaining	1				
19	01906 1	SHAFT-Wheel	1				
20	01915	COLLAR-Wheel Guard	1				
21	01914 A	PAD-Adjuster	1				
22	01913	DETENT-Adjuster	1				

* See Page 9.
 * Voir page 9.
 * Zie pagina 9.
 * Siehe Seite 9.
 * Vedi pagina 9.
 * Consulte la Página 9.
 * Veja a página 9.

No. N° Nr. Nr. N° No. N°	-	Part No. Pièce N° Stuknummer Teil Nr. Pezzo N° No. de pieza N° da peça	-	DESCRIPTION	-	Quantity Quantité Aantal Menge Quantità Cantidad Quantidade	-	Assemblies Ensembles Bausätze Assemblages Compressi Conjuntos Conjuntos
--	---	--	---	-------------	---	---	---	---

**WHEELS
MEULES
WIELEN
RUNDSÄGEBLÄTTER
RUOTE
RUEDAS
RODAS**

**ACCESSORIES
ACCESSOIRES
TOEBEHÖREN
ZEBEHÖR
ACCESSORI
ACCESORIOS
ACCESÓRIOS**

WHEELS - Abrasive MEULES - Abrasive WIELEN - Schuurmiddel RUNDSÄGEBLÄTTER - Schleifkörper RUOTE - Abrasivo RUEDAS - Abrasivas RODAS - Abrasivo	Part No. Pièce N° Pièce N° Teil Nr. Pezzo N° No. de pieza N° da peça	WHEELS - Diamond MEULES - Diamant WIELEN - Diamant RUNDSÄGEBLÄTTER - Diamand RUOTE - Diamante RUEDAS de Diamante RODAS - Diamante	Part No. Pièce N° Pièce N° Teil Nr. Pezzo N° No. de pieza N° da peça
METAL - (12" x 1")* Métal - (30,48cm x 2,54cm)* Metaal - (30,48cm x 2,54cm)* Metall - (30,48cm x 2,54cm)* Metalli - (30,48cm x 2,54cm)* Metal - (30,48cm x 2,54cm)* Metal - (30,48cm x 2,54cm)*	64597 BS	CONCRETE - (12" x 1 / 8" x 1")* Béton - (30,48cm x 0,2cm)* Beton - (30,48cm x 0,2cm)* Beton - (30,48cm x 0,2cm)* Calcestruzzo - (30,48cm x 0,2cm)* Concreto - (30,48cm x 0,2cm)* Cimento - (30,48cm x 0,2cm)*	A 49751 A
DUCTILE - (12" x 1")* Ductile - (30,48cm x 2,54cm)* Buigbaar - (30,48cm x 2,54cm)* Flexibel - (30,48cm x 2,54cm)* Duttilli - (30,48cm x 2,54cm)* Dúctil - (30,48cm x 2,54cm)* Dúctil - (30,48cm x 2,54cm)*	68421 AS	CONCRETE - (14" x 1 / 8" x 1")* Béton - (30,48cm x 0,2cm)* Beton - (30,48cm x 0,2cm)* Beton - (30,48cm x 0,2cm)* Calcestruzzo - (30,48cm x 0,2cm)* Concreto - (30,48cm x 0,2cm)* Cimento - (30,48cm x 0,2cm)*	A 49572 A
CONCRETE - (12" x 1")* Béton - (30,48cm x 0,2cm)* Beton - (30,48cm x 0,2cm)* Beton - (30,48cm x 0,2cm)* Calcestruzzo - (30,48cm x 0,2cm)* Concreto - (30,48cm x 0,2cm)* Cimento - (30,48cm x 0,2cm)*	64596 BS	<div style="border: 1px solid black; padding: 5px;"> <ul style="list-style-type: none"> * (ARBOR SIZE) * (Dimension d'arbre) * (Spilmaat) * (Wellengröße) * (Dimensioni del mandrino) * (Tamaño del eje) * (Tamanho do eixo de montagem) </div>	
CONCRETE - (12" x 20mm)* Béton - (30,48cm x 0,2cm)* Beton - (30,48cm x 0,2cm)* Beton - (30,48cm x 0,2cm)* Calcestruzzo - (30,48cm x 0,2cm)* Concreto - (30,48cm x 0,2cm)* Cimento - (30,48cm x 0,2cm)*	49826	ACCESSORIES ACCESSOIRES TOEBEHÖREN ZEBEHÖR ACCESSORI ACCESORIOS ACCESÓRIOS	Part No. Pièce N° Pièce N° Teil Nr. Pezzo N° No. de pieza N° da peça
DUCTILE - (12" x 20mm)* Ductile - (30,48cm x 2,54cm)* Buigbaar - (30,48cm x 2,54cm)* Flexibel - (30,48cm x 2,54cm)* Duttilli - (30,48cm x 2,54cm)* Dúctil - (30,48cm x 2,54cm)* Dúctil - (30,48cm x 2,54cm)*	49825	SILASTIC : Silastic Vloeibare pakking Silastic Silastic Silastic Silastic (Cola silatica)	24823
METAL - (12" x 20mm)* Métal - (30,48cm x 2,54cm)* Metaal - (30,48cm x 2,54cm)* Metall - (30,48cm x 2,54cm)* Metalli - (30,48cm x 2,54cm)* Metal - (30,48cm x 2,54cm)* Metal - (30,48cm x 2,54cm)*	49824	DOLLY KIT : Jeu pour chariot Dolly Kit Schubkarre - Bausatz Carrello Juego de carretilla Descanso com rodas	UT05032 B
DUCTILE - (14" x 1")* Ductile - (30,48cm x 2,54cm)* Buigbaar - (30,48cm x 2,54cm)* Flexibel - (30,48cm x 2,54cm)* Duttilli - (30,48cm x 2,54cm)* Dúctil - (30,48cm x 2,54cm)* Dúctil - (30,48cm x 2,54cm)*	49560	CARRY CASE w / Insert : Boitier porteur avec insertion Set voor nat snijden Schutztasche mit Einlage Custodia con inserto Maleta con inserto Estojo portatil com o molde da peça	A 18009 A
METAL - (14" x 1")* Métal - (30,48cm x 2,54cm)* Metaal - (30,48cm x 2,54cm)* Metall - (30,48cm x 2,54cm)* Metalli - (30,48cm x 2,54cm)* Metal - (30,48cm x 2,54cm)* Metal - (30,48cm x 2,54cm)*	49561	WET CUTTING KIT : Jeu pour découpe humide Koffer met voering Einsatz zum Naßsägen Kit per l'irrorazione Juego de corte liquido Jogo para corte em humido	A 49649

TOOLS
OUTILS
GEREEDSCHAP
WERKZEUG
UTENSILE
HERRAMIENTAS
FERRAMENTA

TOOLS OUTILS GEREEDSCHAP WERKZEUG UTENSILE HERRAMIENTAS FERRAMENTA	Part No. Pièce N° Pièce N° Teil Nr. Pezzo N° No. de pieza N° da peça	TOOLS OUTILS GEREEDSCHAP WERKZEUG UTENSILE HERRAMIENTAS FERRAMENTA	Part No. Pièce N° Pièce N° Teil Nr. Pezzo N° No. de pieza N° da peça
SHIM - Air Gap : 24306 Cale - Cale d'espacement Afstandsbus - Luchtonderbreking Distanzscheibe - Luftspalt Spessore - Spazio libero Suplemento - Espacoi de aire Calço - Abertura BIT - Torx (1/4" Shank) : 24982 01 Mèche Torx avec tige de (0,64cm) Schroevendraaierbit (1/4" schacht) Bohrstückhalter (1/4 Zoll) Punta torx (1/4") Broca torx con vastago de (0,64cm) Chave de fenda de torção de 1/4 pol. com cabo BIT - Torx (5/16" Shank) : 24982 02 Mèche Torx avec tige de (0,79cm) Schroevendraaierbit (5/16" schacht) Bohrstückhalter (5/16 Zoll) Punta torx (5/16") Broca torx con vastago de (0,79cm) Chave de fenda de torção de 5/16 pol. com cabo PULLER - Rotor : A24544A Extracteur de rotor Verwijderingsapparaat - Rotor Abzieher - Rotor Estrattore - Girante Extractor - Rotor Extrator - Rotor		SCREW DRIVER : 24541 Tournevis Schroevendraaier Schraubendreher Cacciavite Destornillador Chave de fenda WRENCH - Combination (1/2", 3/4", Screwdriver) 19188 Clé combiné - (1.25 cm, 1.9 cm, Tournevis) Combinatie-moersleutel (1/2" schacht, 3/4" schacht, Schroevendraaier) Schraubenschlüssel Kombination - (1/2 Zoll, 3/4 Zoll, Schraubendreher) Chave combinata - (1/2", 3/4", Cacciavite) Llave combinada - (1.25 cm, 1.9 cm, Destornillador) Chave inglesa com variedade de tamanhos -(1/2 pol., 3/4 pol., Chave de fenda) WRENCH - Clutch Spanner : A 23934 Clé à griffe d'embrayage Koppelingsmoersleutel Kupplungsschraubenschlüssel Chaive per ghiera Llave de apretar tuercas para el embrague Chaive inglesa da embreagem WRENCH - 1/2" Forged : 03000 Clé enacier forgé de 1/2 pouce Sleutel - gesmeed (1,27 cm) Schraubenschlüssel - 1,27 cm geschmiedet Chaive - Fucinata 1/2 pollice Llave - Forjado (1,27 cm) Chaive inglesa - Forgada de 1/2 pol.	

NOTES
NOTES
OPMERKINGEN
NOTIZEN
NOTE
NOTAS
NOTAS

MP38
MP38i

Courtesy of Undee70ss
Do Not Sell or Reproduce

HEADQUARTERS

Homelite, Inc.
P.O. BOX 7047
CHARLOTTE, N.C. 28241

OVERSEAS OFFICES

EUROPE, AFRICA & MIDDLE-EAST

Homelite Netherlands B.V.
A Deere & Company Affiliate
Haverstraat 24
2153 GB Nieuw Vennep
The Netherlands

FRANCE

Homelite Atlantic SARL
Groupe Deere & Co.
BP 7011
95050 Cergy Pontoise Cedex
France

AUSTRALIA

Homelite Pacific Ltd.
A Deere & Company Affiliate
ACN 008 683 538
94 Rushdale Street
P. O. Box 555 MDA
Knoxfield Vic 3180
Australia

CANADIAN OFFICES

Homelite Canada Limited
Homelite Canada Limitée

A Deere & Company Affiliate /
Une Filiale de Deere & Company
1850-55e/th Avenue
Lachine, Québec, Canada H8T 3J5
1-800-363-5715

UNIT 212-214, 590 Ebury Place
New Westminster, B.C. V3M 6K7
1-800-667-3128

20-D Voyager Court South
Etobicoke, Ontario M9W 5M7
1-800-465-2249

Homelite.inc.

A Subsidiary of Deere & Company