

# Homelite®

- GB PARTS LIST
- F LISTE DE PIÈCES
- NL ONDERDELENLIJST
- D TEILELISTE
- I ELENCO DEI PEZZI
- E LISTA DE PIEZAS
- P LISTA DE PEÇAS

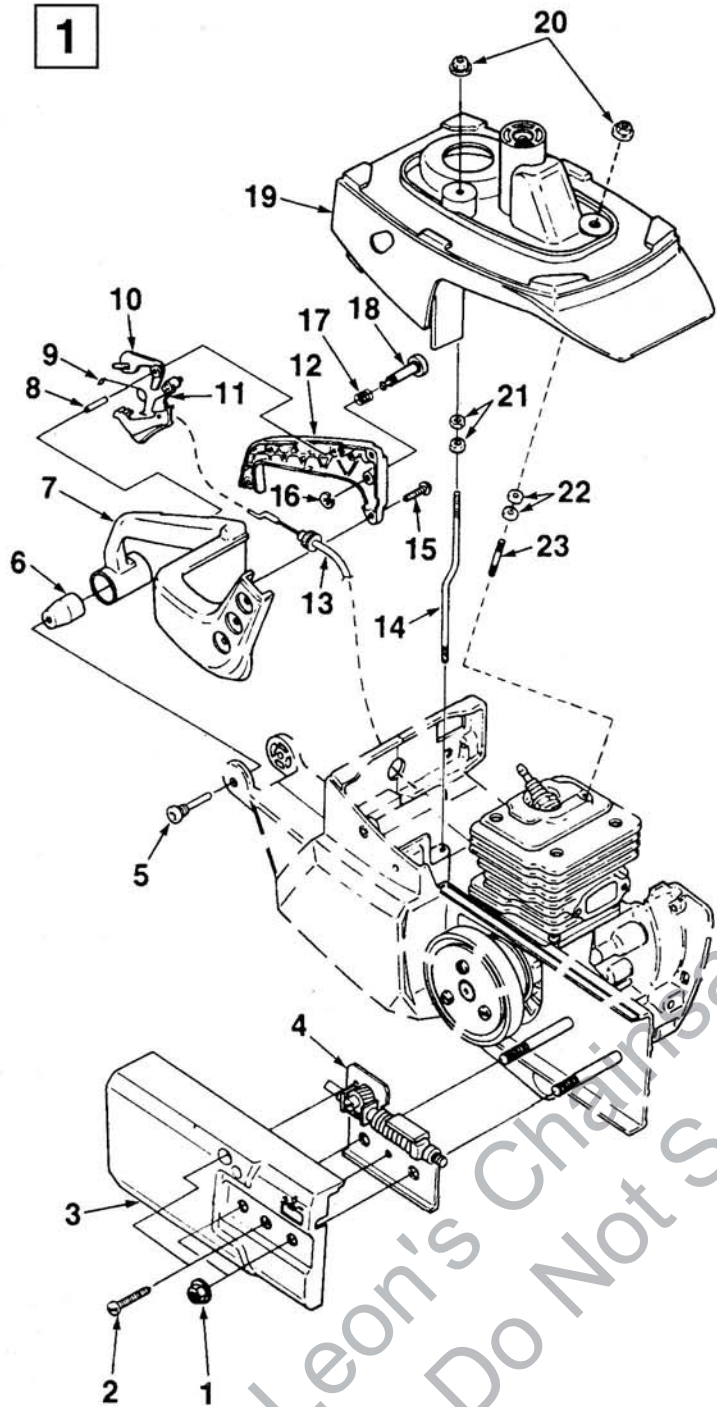
## MP38

UT05050-A  
UT05055-A, B

Printed in U.S.A.  
Imprimé aux. E.-U.  
Gedruckt in de V.S.  
Gedruckt in den U.S.A.  
Stampato negli Stati Uniti  
Impreso en EE. UU.  
Impresso nos E.U.A.

P/N 18697  
REV. 2

1



N	PN	D	Q
1	81282	NUT-Hex Flange (5/16-18)	2
2	82575	SCREW-Taptite (8-32 X 5/8")	2
3	A-02329-A	COVER-Clutch	1
4	A-03879	GEAR KIT	1
5	93367	PIN-Isolator	2
6	93368-A	ISOLATOR-Vibration	2
7	02318	HANDLE-Rear	1
8	68548	PIN-Trigger	2
9	02316	SPRING-Throttle	1
10	93385-A	LOCK-Trigger	1
11	A-03806-A	TRIGGER & SWIVEL	1
12	02319	COVER-Handle	1
13	A-02315	CABLE-Throttle	1
14	02347	STUD-Offset (10-24)	1
15	82536	SCREW-Plastite (8-16 X 5/8")	4
16	58409	RING-Retaining	1
17	95020	SPRING-Compression	1
18	95671	PIN-Throttle Lock	1
19	02303-A	COVER-Cylinder	1
20	02330	NUT-Hex Conical	2
21	81092	NUT-Hex	2
22	02425*	SPACER-Insulating	2
23	02346*	STUD (10-24 X 1.06")	1

No.  
N°  
Nr.  
Nr.  
N°  
No.  
N°

N

Part No.  
Pièce N°  
Stuknummer  
Teil Nr.  
Pezzo N°  
No. de pieza  
N° da peça

PN

DESCRIPTION

D

Quantity  
Quantité  
Aantal  
Menge  
Quantità  
Cantidad  
Quantidade

Q

\* NOTE: Items #22 and #23 are also included with our part number A-03881-Cylinder and Piston Assembly.

\* NOTE: Les articles N° 22 et N° 23 font également partie de notre pièce N° A-03881, Ensemble cylindre et piston.

\* N.B.: Artikelen nr. 22 en 23 zijn ook inbegrepen bij ons stuknummer A-03881- cilinder met zuiger.

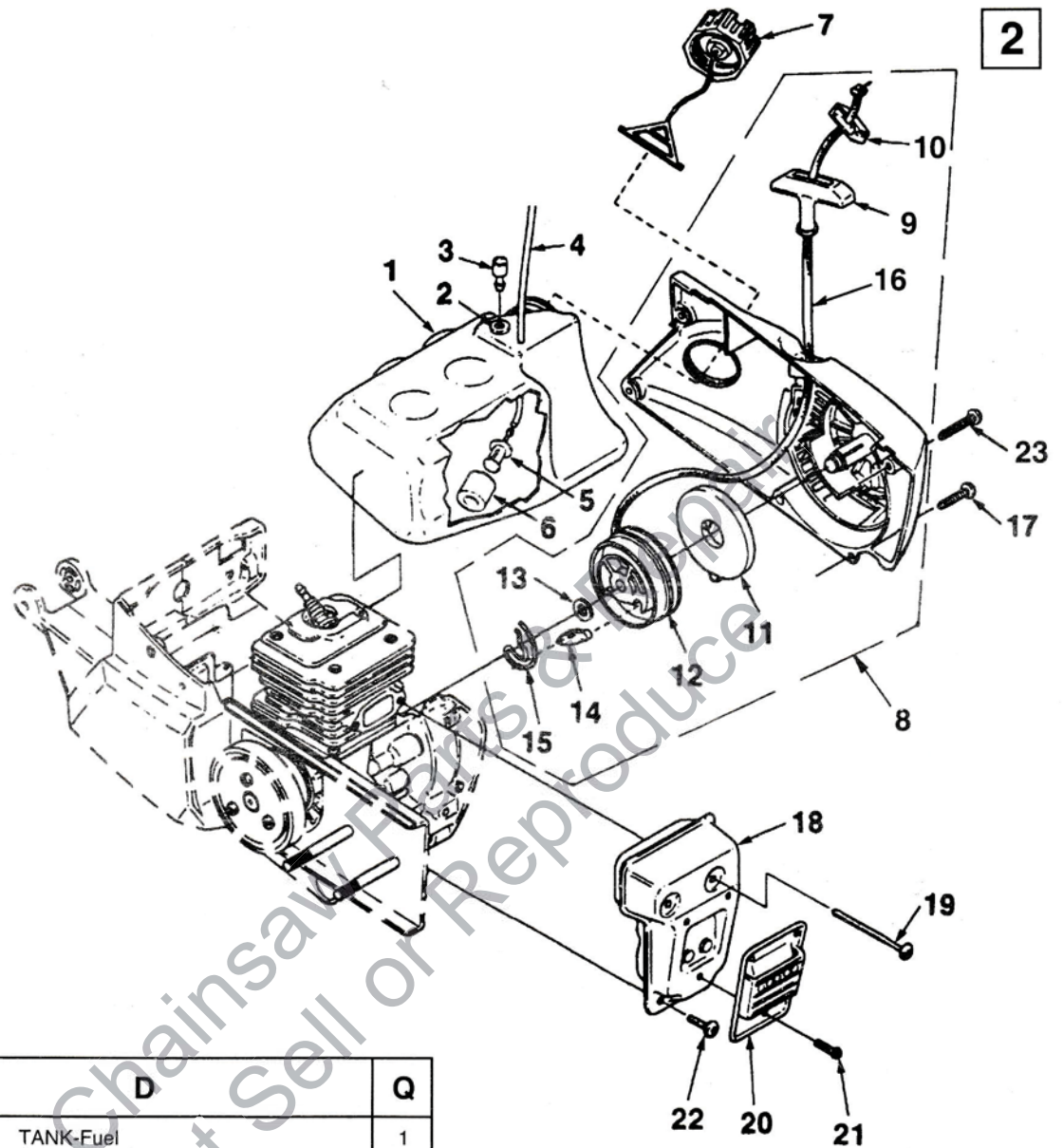
\* HINWEIS: Stücke #22 und #23 sind auch in unseren Zylinder/Kolben-Bausätzen der Teilenummer A-03881 inbegriffen.

\* NOTA: Gli articoli n° 22 e 23 fanno parte anche del nostro gruppo cilindro e pistone, n° di catalogo A-03881.

\* NOTA: Los artículos #22 y #23 también están incluidos en el número de pieza A-03881- Conjunto de cilindro pistón.

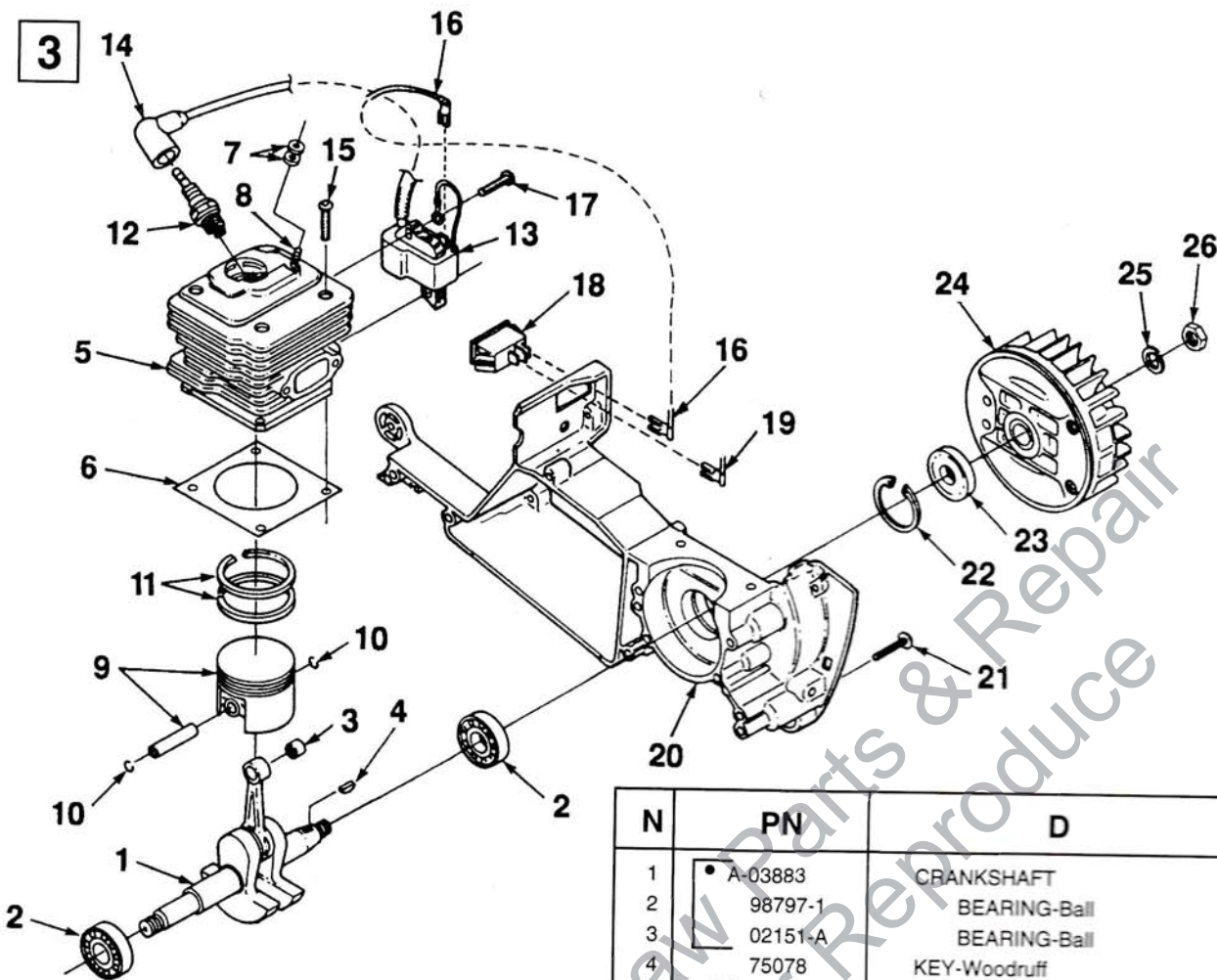
\* NOTA: Os artigos n°. 22 e 23 estão também incluídos com a nossa peça número A-03881- Conjunto de Cilindro e Pistão.





N	PN	D	Q
1	• A-03402	TANK-Fuel	1
2	64862	GROMMET	1
3	A-02294	FILTER SLEEVE (Complete)	1
4	94772-40	TUBING-Rubber (10")	1
5	• A-97700	FILTER-Fuel	1
6	59253-1A	FILTER-Fuel	1
7	• A-00904-A	CAP-Tank (w/Retainer)	1
8	• A-03884-A	STARTER (Complete)	1
9	• A-69962-B	GRIP-Starter (w/insert)	1
10	70018-A	INSERT-Rope Ret.	1
11	A-97908	SPRING & CONTAINER	1
12	• A-03882	PULLEY ASSEMBLY	1
13	01274	WASHER-Thrust	1
14	98332-A	PAWL-Starter	1
15	03750-B	CLIP-Retainer	1
16	97500	ROPE-Starter (45")	1
17	82555-1	SCREW-Truss Hd. (10-24 X 3/4")	3
18	A-02287	MUFFLER	1
19	82574	SCREW-Truss Hd. (10-24 X 2 1/2")	2
20	A-98747	CAP-Muffler	1
21	80983	SCREW-Machine Hex Hd. (8-32 X 1/2")	3
22	96620-1	SCREW-Torx (10-24 X 1/2")	2
23	82556-1	SCREW-Truss Hd. (10-24 X 1 1/4")	1

Assemblies  
Ensembles  
Assemblages  
Bausätze  
Compressi  
Conjuntos  
Conjuntos



N	PN	D	Q
1	• A-03883	CRANKSHAFT	1
2	98797-1	BEARING-Ball	2
3	02151-A	BEARING-Ball	1
4	75078	KEY-Woodruff	1
5	• A-03881	CYLINDER & PISTON ASSEMBLY	1
6	01568	GASKET-Cylinder	1
7	02425	SPACER	2
8	02346	STUD-(10-24 X 1 1/4")	5
9	• A-01273	PISTON (1.890 Dia.)	1
10	02161	RING-Retaining	2
11	02162	RING-Piston	2
12	93561-S	SPARK PLUG (CJ6Y)	1
	98217-S	SPARK PLUG (RCJ6Y) (Resistor)	1
13	• A-03748	IGNITION MODULE (Sems/Walbro)	1
14	A-02597	SPARK PLUG BOOT KIT	1
15	82580	SCREW-Pan Hd. (12-24 X 3/4")	4
16	A-02284	IGNITION GROUND WIRE	1
17	82575	SCREW-Pan Hd. (8-32 X 5/8")	2
18	01802	SWITCH	1
19	A-03556	GROUND WIRE	1
20	• A-02272-B	CRANKCASE	1
21	82556-1	SCREW-Truss Hd. (10-24 X 1 1/4")	9
22	28922-1	RETAINER-Bearing	1
23	98197-A	SEAL-Main	2
24	02152-A	ROTOR	1
25	83102	WASHER-Lock (3/8")	1
26	81124-A	NUT-Jam (3/8-24)	1

No.  
N°  
Nr.  
Nr.  
N°  
No.  
No.

N

Part No.  
Pièce N°  
Stuknummer  
Teil Nr.  
Pezzo N°  
No. de peça  
N° da peça

PN

DESCRIPTION

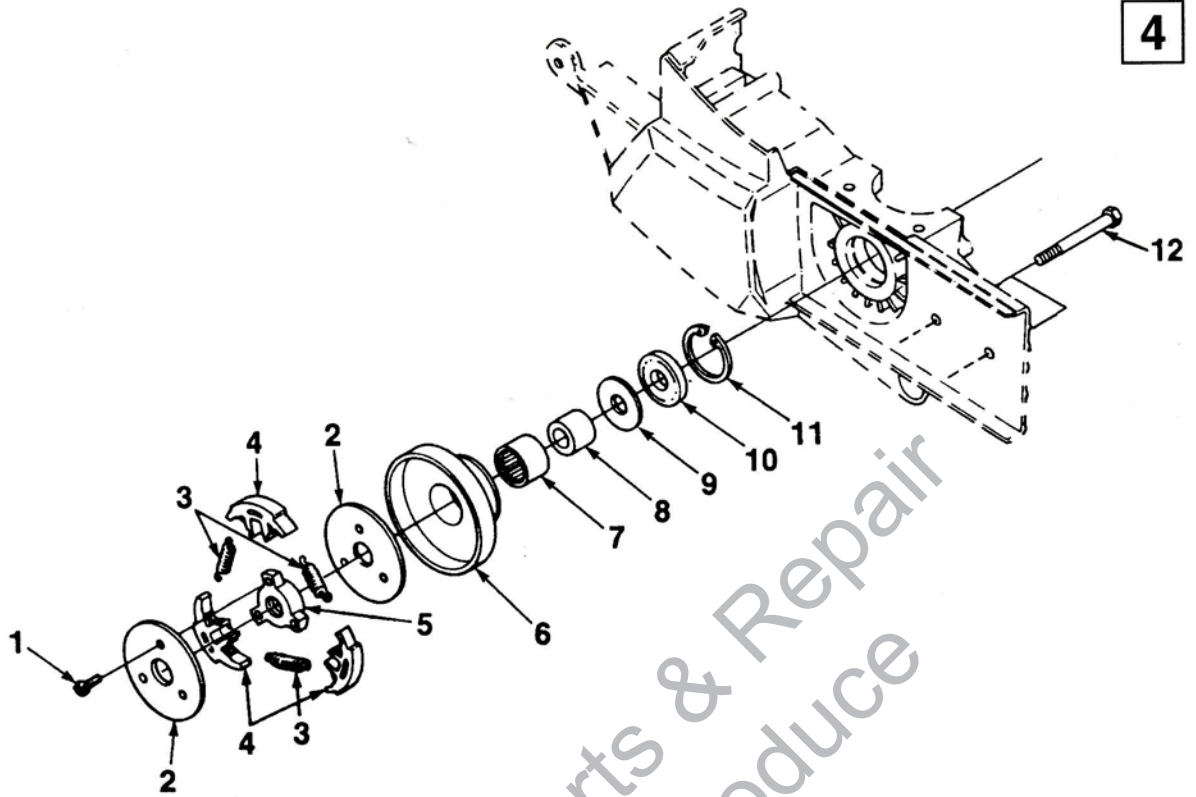
D

Quantity  
Quantité  
Aantal  
Menge  
Quantità  
Cantidad  
Quantidade

Q

Assemblies  
Ensembles  
Assemblages  
Bausätze  
Compressi  
Conjuntos  
Conjuntos

•



N	PN	D	Q
1	82253	SCREW-Machine Hex Hd. (8-32 X 3/8")	3
2	93628	COVER-Clutch	2
3	93638-A	SPRING-Clutch	3
4	79239	SHOE-Clutch	3
5	02334	CLUTCH-Spider	1
6	• A-49543	PULLEY-Drum & Bearing	1
7	46071	BEARING-Needle	1
8	46070	RACE-Inner	1
9	46135	WASHER-Thrust	1
10	98197-A	SEAL-Main	1
11	28922-1	RETAINER-Bearing	1
12	02327	BOLT-Wheel Arm	1

No.  
N°  
Nr.  
Nr.  
N°  
No.  
No.

N

Part No.  
Pièce N°  
Stuknummer  
Teil Nr.  
Pezzo N°  
No. de pieza  
N° da peça

PN

DESCRIPTION D

Quantity  
Quantité  
Aantal  
Menge  
Quantità  
Cantidad  
Quantidade

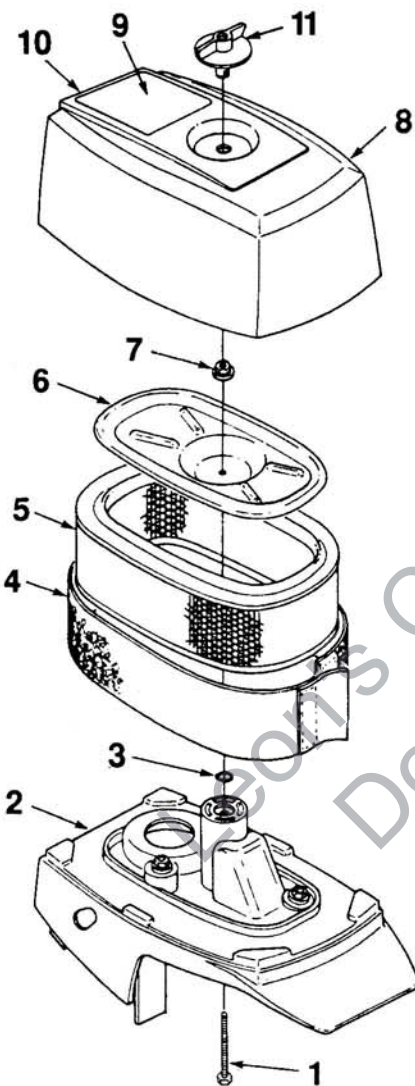
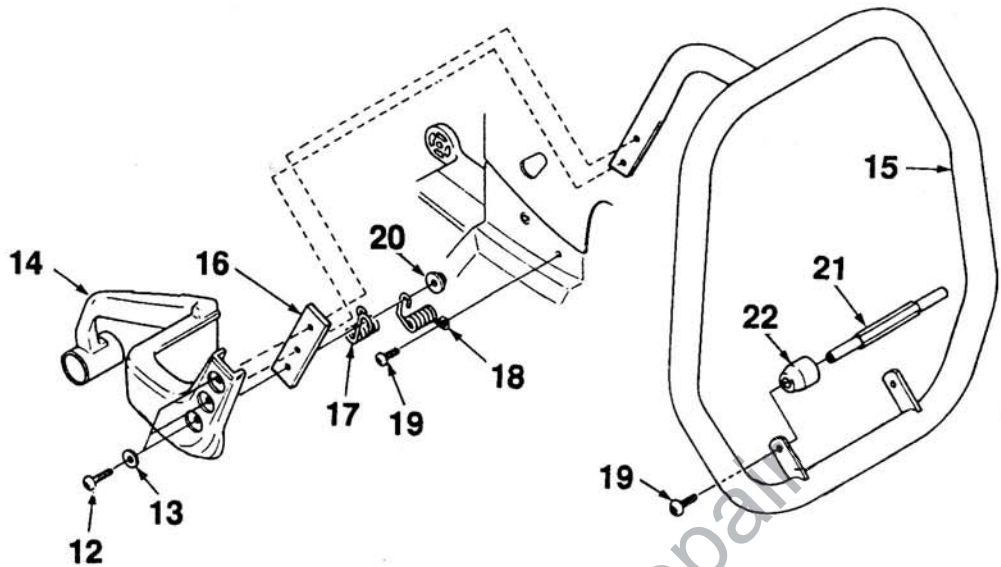
Q

Assemblies  
Ensembles  
Assemblages  
Bausätze  
Complessi  
Conjuntos  
Conjuntos

•



5



N	PN	D	Q
1	82584	SCREW-Hex Cap (10-24 X 1 3/4")	1
2	02303	COVER-Cylinder	1
3	03383	O-RING	1
4	02307	PREFILTER-Felt	1
5	02308	ELEMENT-Air Filter	1
6	02309-1	COVER-Air Filter Element	1
7	02330	NUT-Hex	1
8	A-03880	COVER-Air Filter	1
9	03620	DECAL-Warning (Eng.)	1
	04644	DECAL-Warning (Int.)	1
10	03621	DECAL-Warning (French)	1
11	A-03024	KNOB & INSERT	1
12	82555-1	SCREW-Truss Hd. (10-24 X 3/4")	3
13	95935	WASHER (#12-11/16)	3
14	02318	HANDLE-Rear	1
15	A-02320	HANDLE BAR	1
16	02323	BRACKET-Mounting	2
17	03536	SPRING-Isolation (Small)	1
18	03535	SPRING-Isolation (Large)	1
19	96620-1	SCREW-Torx Hd. (10-24 X 1/2")	4
20	02330	NUT-Hex (10-24)	1
21	02277	SPACER	1
22	97305-1A	ISOLATOR-Vibration	2

No.  
N°  
Nr.  
Nr.  
N°  
No.  
N°

N

Part No.  
Pièce N°  
Stuknummer  
Teil Nr.  
Pezzo N°  
No. de peça  
N° da peça

PN

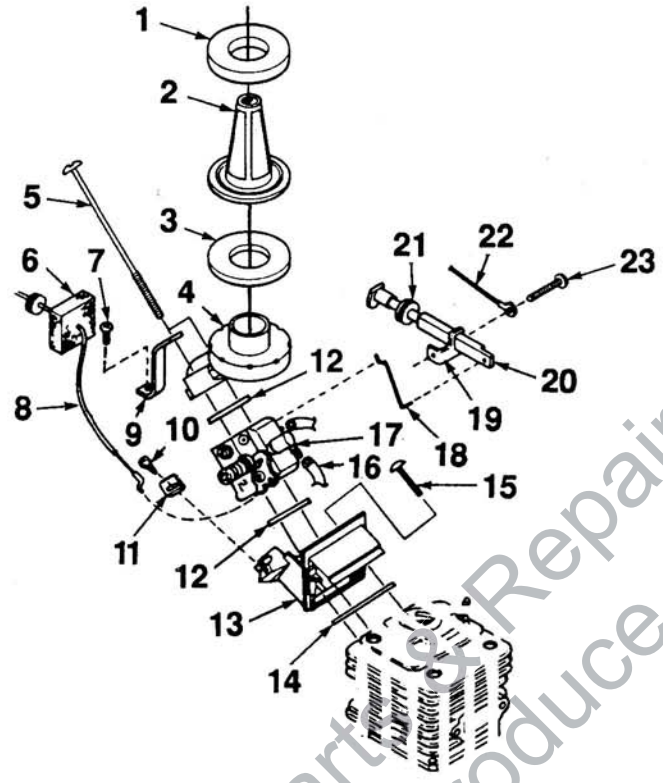
DESCRIPTION D

Quantity  
Quantité  
Aantal  
Menge  
Quantità  
Cantidad  
Quantidade

Q

Assemblies  
Ensembles  
Assemblages  
Bausätze  
Complessi  
Conjuntos

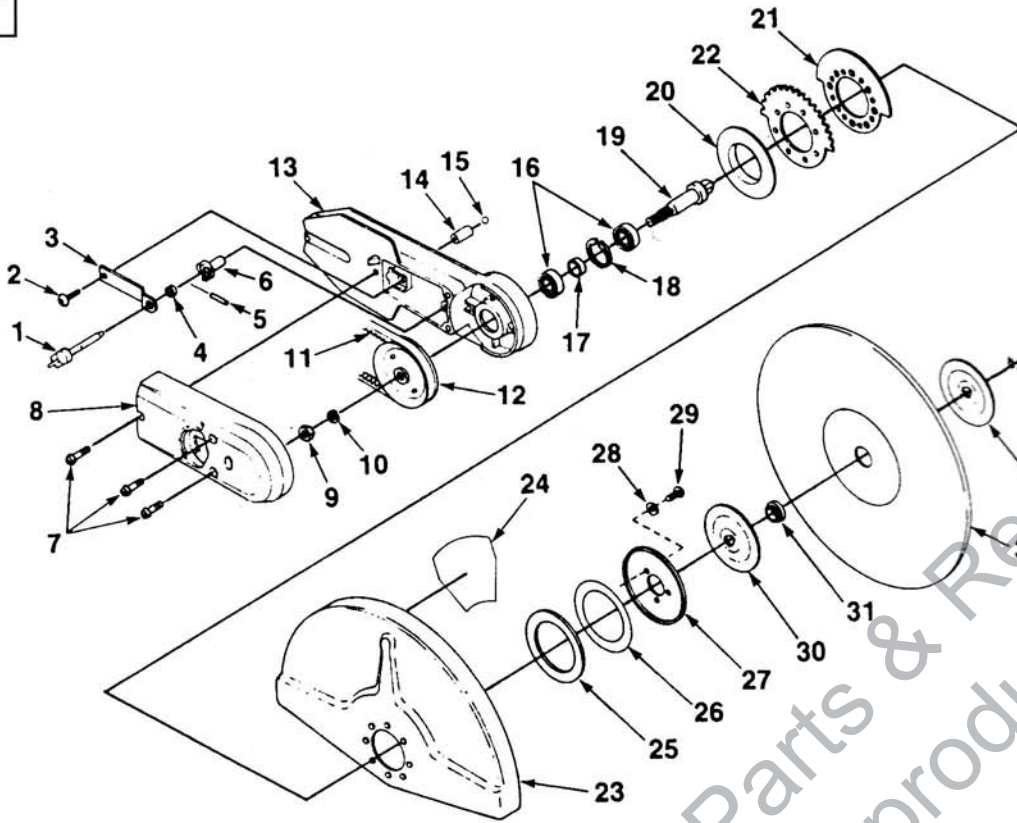
Q



N	PN	D	Q
1	02300	GASKET-Foam (1/4")	1
2	02301	FILTER-Screen	1
3	02302	GASKET-Foam	1
4	A-03272	ADAPTOR-Intake	1
5	82582	SCREW-Truss Hd. (8-16 X 3 1/4")	2
6	03758	PAD-Foam	1
7	96620-1	SCREW-Torx (10-24 X 1/2")	1
8	A-02315	CABLE-Throttle	1
9	02313-A	BRACKET-Air Intake	1
10	82513	SCREW-Thread Form. (6-19 X 1/2")	1
11	03455	BRACKET-Cable End	1
12	02297	GASKET-Adaptor	2
13	02296-1	ADAPTOR-Intake	1
14	02295	GASKET-Carburetor	1
15	82571	SCREW-Pan Hd. (10-24 X 1")	3
16	93157-19	TUBING,Pulse line (4 3/4")	1
17	A-02298-A	CARBURETOR-Walbro	1
	03757	GROMMET-Hi-Lo (Not Shown)	1
18	A-06369	CHOKE LINK & RETAINER	1
19	03333	BRACKET-Cable	1
20	02314	ROD-Choke	1
21	64862	GROMMET	1
22	A-03556	GROUND WIRE	1
23	82556-1	SCREW-Truss Hd. (10-24 X 1 1/4")	1

Leon's Chair-Sale Part & Repair Do Not Sell or Reproduce

No. N° Nr. Nr. N° No. N°	— N	Part No. Pièce N° Stuknummer Teil Nr. Pezzo N° No. de pieza N° da peça	— PN	DESCRIPTION	— D	Quantity Quantité Aantal Menge Quantità Cantidad Quantidade	— Q
--	-----	--	------	-------------	-----	---	-----



N	PN	D	Q	N	PN	D	Q
1	• A-00660	KNOB & PIN	1	23	• A-03479	WHEEL GUARD & PLATE	1
2	96620-1	SCREW-Truss Hd. (10-24 X 1/2")	3	24	04645-A	DECAL-Caution	1
3	01923	PLATE-Spring	1	25	01912	WASHER-Rubber	1
4	01922	SPACER-Adjusting Pin	1	26	01911-01	SHIM-.020"	1
5	JA-46135-9	PIN-Roll	1	27	01910	WASHER-Spring	1
6	01921	SLEEVE-Cam	1	28	95935	WASHER (#12 - 11/16)	3
7	95792	SCREW-Round Hd. (10-24 X 23/32")	3	29	96620-1	SCREW-Truss Hd. (10-24 X 1/2")	3
8	01927	BELT-Cover	1	30	01909-1	FLANGE-Wheel	1
9	02423	NUT-Hex	1	31	01902	SPACER (1")	1
10	JA-44614-8	WASHER-Lock (7/16)	1		01902	SPACER (22mm)	1
11	01926	BELT- V-Drive	1		01907	SPACER (20mm)	1
12	A-02891	PULLEY & HUB	1	32	*	WHEEL	1
13	01917-2	ARM-Wheel	1	33	A-03412	BOLT & WASHER	1
14	02267	SNUBBER	1				
15	00568	STEEL BALL	1				
16	63107	BEARING-Ball	2				
17	01916	SPACER-Bearing	1				
18	31746	RING-Retaining	1				
19	01906	SHAFT-Wheel	1				
20	01915	COLLAR-Wheel Guard	1				
21	01914	PAD-Adjuster	1				
22	01913	DETENT-Adjuster	1				

\* See Figure 9.  
 \* Voir la Fig. 9.  
 \* Zie Fig. 9.  
 \* Siehe Abbildung 9.  
 \* Vedere Fig. 9.  
 \* Consulte Fig. 9.  
 \* Veja a Figura 9.

No.  
N°  
Nr.  
Nr.  
N°  
No.  
N°

Part No.  
Pièce N°  
Stuknummer  
Teil Nr.  
Pezzo N°  
No. de pieza  
N° da peça

DESCRIPTION — D

Quantity  
Quantité  
Aantal  
Menge  
Quantità  
Cantidad  
Quantidade

Assemblies  
Ensembles  
Assemblages  
Bausätze  
Complèssi  
Conjuntos  
Conjuntos



8  
**TOOLS**  
**OUTILS**  
**GEREEDSCHAP**  
**WERKZEUG**  
**UTENSILE**  
**HERRAMIENTAS**  
**FERRAMENTA**

8

**Wrench- Combination (5/8" & 3/8") ..... A-24824**

Clé à douille  
 Dopsleutel  
 Steckschlüsseleinsatz  
 Chiave a tubo  
 Llave de cubos  
 Chave-de-Caive

**Wrench- Torx (T-25) ..... 03646**

Clé- Torx (T-25)  
 Sleutel- Torx (T-25)  
 Schraubenschlüssel- (T-25)  
 Chiave - Torx (T-25)  
 Llave - Torx (T-25)  
 Chave inglesa - Torx (T-25)

**Wrench (1/2") ..... 03000**

Clé (1,27cm)  
 Sleutel (1/2")  
 Schraubenschlüssel, (1/2 Zoll)  
 Chiave (1/2)  
 Llave (1,27cm)  
 Chave inglesa (de 1/2 pol.)

**Shim ..... 24306**

Cale  
 Afstandsbus  
 Distanzscheibe  
 Spessore  
 Suplemento  
 Calço

**Bit- Torx (1/4" shank) ..... 24982-01**

Méche Torx avec tigs de (0,64cm)  
 Schroevendraaierbit (1/4" schacht)  
 Bohrstückhalter (1/4 Zoll)  
 Punta torx (1/4")  
 Broca Torx con vastago (0,64cm)  
 Chave de fenda de torção de 1/4 pol. com cabo

**Silastic ..... 24823**

Silastic  
 Vloeibare pakking  
 Silastic  
 Silastic  
 Silastic  
 Silatic (Cola silática)

**Paint- Red ..... 23475**

Peinture- Rouge  
 Verf- Rood  
 Farbe- Rot  
 Vernice- Rossa  
 Pintura- Color rojo  
 Tinta- Vermelha

**Spark Arrestor Screen ..... 98827**

Tamis pare-étincelles  
 Vonkenvanger  
 Funkenfängersieb  
 Schermo parascintille  
 Chispero  
 Rede de protecção contra as falcas

Leon's Chainsaw Parts & Repair  
 Do Not Sell or Reproduce

- Ⓢ ACCESSORIES
- ⓕ ACCESSOIRES
- Ⓜ TOEBEHOREN
- ⓓ ZUBEHÖR
- Ⓜ ACCESSORI
- ⓔ ACCESORIOS
- Ⓟ ACESSORIOS

WHEELS- Resinoid ROUES- Résinoïde SCHIJVEN- Hars RUNDSÄGEBLÄTTER- Resinoid RUOTE- Resinoidi RUEDAS tipo Resina MÓS- Resina sintética	Part No. Pièce N° Stuknummer Teil Nr. Pezzo N° No. de peça N° da peça	12" x 5/32" x 1" 305mm x 4mm x 25mm	12" x 5/32" x 20mm 305mm x 4mm x 20mm	12" x 5/32" x 22mm 305mm x 4mm x 22mm
Metal	64597-BS (1)	X		
Métal	43235-AS (1)		X	
Metaal	43232-AS (1)			X
Metall	49821 (2)	X		
Metal	49824 (2)		X	
Ductile	68421-AS (1)	X		
Ductile	43234-AS (1)		X	
Buigbaar	43231-AS (1)			X
Flexibel	49822 (2)	X		
Duttill	49825 (2)		X	
Dúctil	49825 (2)		X	
Concrete	64596-BS (1)	X		
Béton	43233-AS (1)		X	
Beton	43230-AS (1)			X
Calcestruzzo	49823 (2)	X		
Concreto	49826 (2)		X	
Cimento	49826 (2)		X	

- WHEELS- Diamond
- ROUES- Diamant
- SCHIJVEN- Diamant
- RUNDSÄGEBLÄTTER- Diamand
- RUOTE- Diamante
- RUEDAS de Diamante
- MÓS- Diamante

Concrete (12" x 1/8" x 1") .. A-49753-A, (1) A-49751-A, (2) A-06397(3)  
 Béton  
 Beton  
 Beton  
 Calcestruzzo  
 Concreto  
 Cimento

Blade- Carbide ..... 64595-A  
 Lame- Carbure  
 Blad- Carbide  
 Klinge- Karbid  
 Lama- Carburo  
 Cuchilla- de Carburo  
 Lâmina- Carboneto

Dolly Kit ..... UT-05032-A  
 Jeu pour chariot  
 Dolly Kit  
 Schubkarre- Bausatz  
 Carrello  
 Juego de carretilla  
 Descanso com rodas

Carry Case w/insert ..... A-18009-A  
 Boltier porteur avec insertion  
 Set voor nat snijden  
 Schutztasche mit Einlage  
 Custodia con inserto  
 Maleta con inserto  
 Estojo portátil com o molde da peça

Wet Cutting Kit ..... A-49649  
 Jeu pour découpe humide  
 Koffer met voering  
 Einsatz zum Naßsagen  
 Kit per l'irrorazione  
 Juego de corte liquido  
 Jogo para corte em húmido

(1) Premium (Continuous Rim)  
 Qualité Supérieure (Jante continue)  
 Beste Kwaliteit (Ononderbroken Rand)  
 Höchstqualität (ununterbrochener Kranz)  
 Prima Qualità (Bordo continuo)  
 Calidad Superior (Reborde Continuo)  
 De Primeira Qualidade (Borda contínua)

(2) Premium (Segmented Rim)  
 Qualité Supérieure (Jante segmentée)  
 Beste Kwaliteit (Gesegmenteerde Rand)  
 Höchstqualität (segmentierter Kranz)  
 Prima Qualità (Bordo segmentado)  
 Calidad Superior (Reborde Segmentado)  
 De Primeira Qualidade (Borda segmentada)

(3) Standard (Segmented Rim)  
 Standard (Jante segmentée)  
 Standaard (Gesegmenteerde Rand)  
 Standard (segmentierter Kranz)  
 Standard (Bordo segmentado)  
 Estandar (Reborde Segmentado)  
 Normal (Borda segmentada)

**NOTES**  
**NOTES**  
**OPMERKINGEN**  
**NOTIZEN**  
**NOTE**  
**NOTAS**  
**NOTAS**

Leon's Chainsaw Parts & Repair  
Do Not Sell or Reproduce



## **CUSTOMER ASSISTANCE**

**FOR THE LOCATION OF YOUR NEAREST HOMELITE SERVICING DEALER  
IN THE UNITED STATES, PUERTO RICO, AND THE VIRGIN ISLANDS,**

**CALL: 1-800-242-4672**

### HEADQUARTERS

Homelite, Inc.  
P.o.BOX 7047  
CHARLOTTE, N.C. 28241

### OVERSEAS OFFICES

#### NETHERLANDS

Homelite Netherlands B.V.  
A Deere & Company Affiliate  
Haverstraat 24  
2153 GB Nieuw Vennepe  
The Netherlands

#### FRANCE

Homelite Atlantic SARL  
Groupe Deere & Co.  
BP 7011  
95050 Cergy Pontoise Cedex  
France

#### AUSTRALIA

Homelite Pacific Ltd.  
A Deere & Company Affiliate  
ACN 008 683 538  
94 Rushdale Street  
P.O. Box 555 MDA  
Australia

### CANADIAN OFFICES

Homelite Canada Limited  
Homelite Canada Limitée

A Deere & Company Affiliate/  
Une Filiale de Deere & Company  
1850-55e/th Avenue  
Lachine, Québec, Canada H8T 3J5  
1-800-363-5715

UNIT 212-214, 590 Ebury Place  
New Westminster, B.C. V3M 6K7  
1-800-667-3128

20-D Voyager Court South  
Etobicoke, Ontario M9W 5M7  
1-800-465-2249

# **Homelite**.inc.

A Subsidiary of Deere & Company