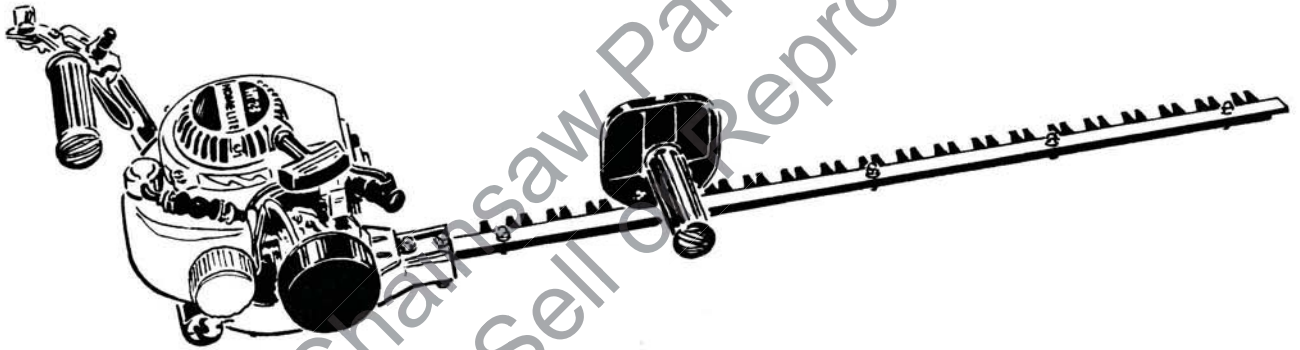


HOMELITE[®]
JACOBSEN

PART NO. 17884
PRINTED IN U.S.A.
PRICE 35¢

MODEL
HT-23
HEDGE TRIMMER



PARTS LIST

HOMELITE **TEXTRON**

Homelite Division of Textron Inc.

**HT-23
HEDGE TRIMMER**

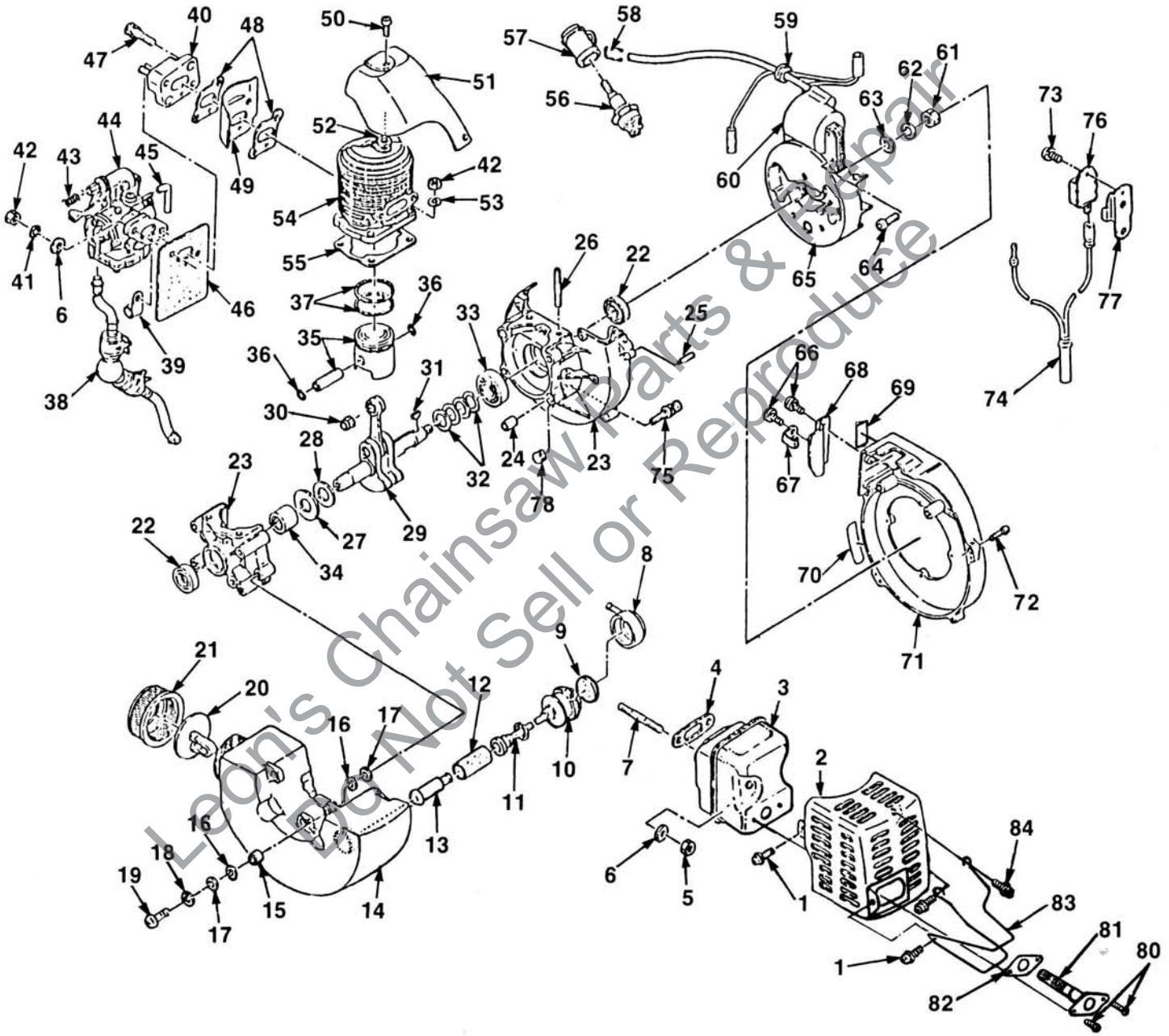
FIGURE 1

| NO. | PART NO. | DESCRIPTION | QTY. | NO. | PART NO. | DESCRIPTION | QTY. |
|-----|------------|---------------------------------------|------|-----|----------|-----------------------------|------|
| 1 | 98554-34 | COVER- Cutter blade | 1 | 31 | 98554-93 | CABLE- Throttle | 1 |
| 2 | 98554-32 | BLADE- Cutter (top) | 1 | 32 | 98555-50 | LEVER- Throttle | 1 |
| 3 | 98554-25 | BOLT- Cutter (Long) | 1 | 33 | 98554-16 | BOLT- W/Washer (M5 x 30) | 4 |
| 4 | 98554-24 | WASHER- Cutter | 5 | 34 | 98554-85 | BRACKET, SWITCH & LEAD | 1 |
| 5 | 98554-26 | BOLT- Cutter (short) | 4 | 35 | 98552-46 | SCREW (M4 x 12) | 2 |
| 6 | 98554-33 | BLADE- Cutter (bottom) | 1 | 36 | 98554-10 | DAMPER- Handle | 2 |
| 7 | 98554-30 | GUIDE- Cutter | 1 | 37 | 98554-11 | BRACKET- Handle (rear) | 1 |
| 8 | 98552-23 | WASHER- (M6) | 3 | 38 | 98554-36 | BOLT- Stud | 4 |
| 9 | 98552-24 | WASHER- Spring (M6) | 4 | 39 | 98554-46 | WRENCH- Spanner (M8 x 10) | 1 |
| 10 | 98554-23 | CAP- U NUT (M6) | 4 | 40 | 98552-24 | SPRING WASHER (M6) | 4 |
| 11 | 98554-28 | GRIP- Handle | 2 | 41 | 98554-37 | NUT (M6) | 4 |
| 12 | A-98554-27 | HANDLE ASSY. (front) (incl. item #11) | 1 | 42 | 98552-16 | WASHER- Spring (M5) | 2 |
| 13 | 98554-07 | SCREW (M5 x 14) | 2 | 43 | 98554-08 | NUT- (M5) | 2 |
| 14 | 98554-05 | NIPPLE- Grease | 1 | 44 | 98554-19 | ROD- Crank | 2 |
| 15 | 98554-01 | DRUM- Clutch | 1 | 45 | 98554-20 | BEARING- Needle (YTL 33417) | 2 |
| 16 | 98554-44 | SCREW (M6 x 18) | 1 | 46 | 98554-21 | CRANK SHAFT | 1 |
| 17 | 98552-42 | GUIDE- Clutch | 1 | 47 | 98554-18 | BEARING (6201LL) | 1 |
| 18 | 98554-41 | SHOE- Clutch | 2 | 48 | 98554-17 | PINION | 1 |
| 19 | 98554-42 | SPRING- Clutch | 2 | 49 | 98552-03 | BEARING (6001) | 3 |
| 20 | 98552-45 | PLATE- Clutch | 1 | 50 | 98554-22 | FELT- Oil | 1 |
| 21 | 98554-12 | BOLT- (M6 x 50) | 2 | 51 | 98554-08 | NUT- (M5) | 2 |
| 22 | 98554-38 | CASE- Attachment, (KT-12.T-130) | 1 | 52 | 98552-16 | WASHER- Spring (M5) | 2 |
| 23 | 98554-09 | SCREW (M5 x 12) | 4 | 53 | 98554-06 | PLATE- Blade (A) | 2 |
| 24 | 98554-02 | NUT (M10) (P1.25 Thin) | 1 | 54 | 98554-14 | COVER- Case | 1 |
| 25 | 98554-45 | BAG- Tool | 1 | 55 | 98554-15 | BOLT W/WASHER (M5 x 25) | 2 |
| 26 | 98554-37 | NUT (M6) | 2 | 56 | 98554-07 | SCREW (M5 x 14) | 2 |
| 27 | A-98554-29 | HANDLE ASSY. (rear) (incl. item #11) | 1 | 57 | 98554-93 | CABLE THROTTLE | 1 |
| 28 | 98552-23 | WASHER (M6) | 2 | 58 | 98552-03 | BEARING | 1 |
| 29 | 98554-03 | CASE- Clutch | 1 | 59 | 98555-76 | BRACKET | 1 |
| 30 | 98554-04 | CASE | 1 | 60 | 98555-75 | BRACKET | 1 |

ALWAYS FURNISH MODEL AND SERIAL NUMBER WHEN ORDERING PARTS.

**HT-23
HEDGE TRIMMER**

FIGURE 2



ALWAYS FURNISH MODEL AND SERIAL NUMBER WHEN ORDERING PARTS.

HT-23
HEDGE TRIMMER

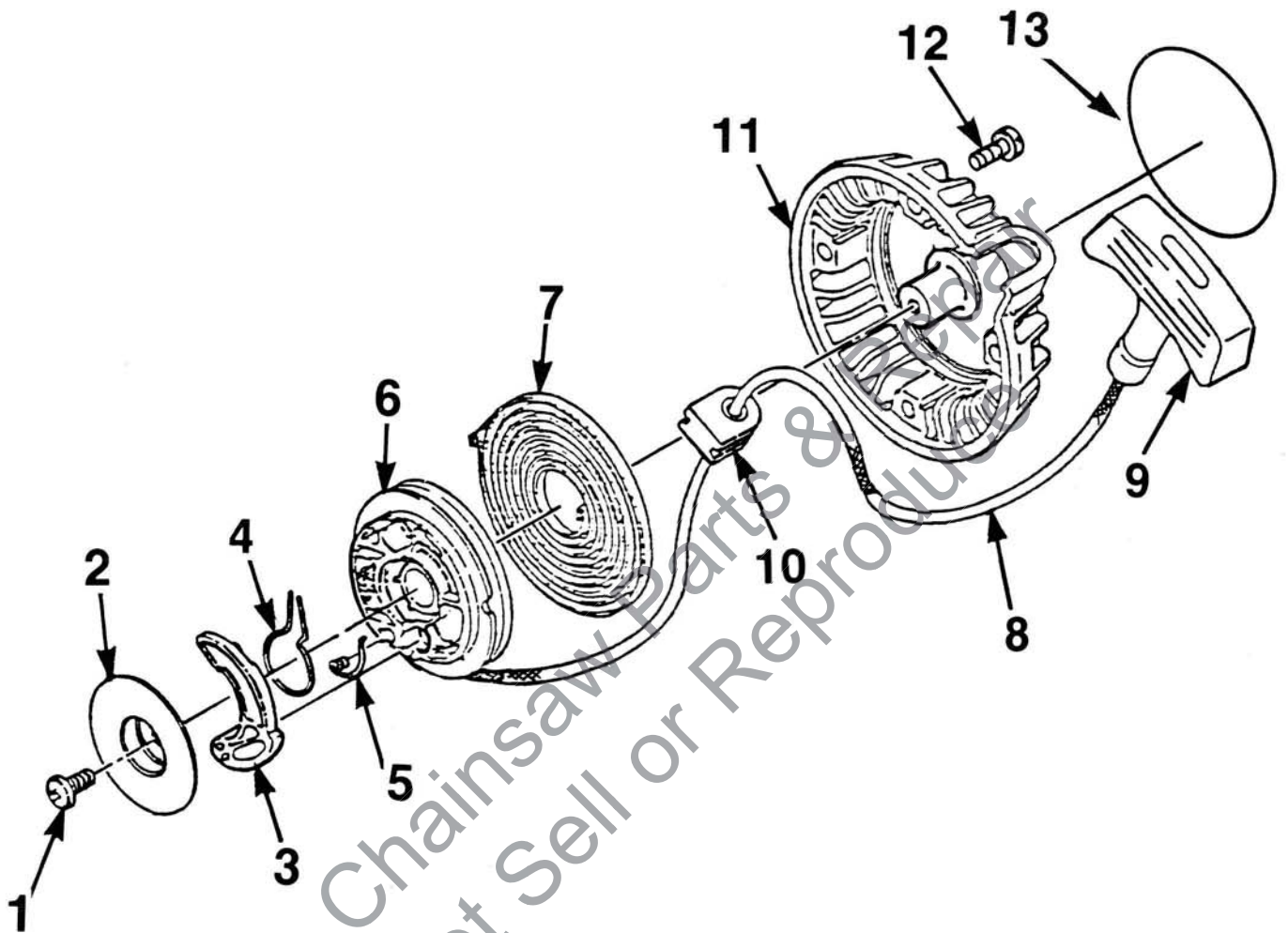
FIGURE 2

| NO. | PART NO. | DESCRIPTION | QTY. | NO. | PART NO. | DESCRIPTION | QTY. |
|-----|------------|----------------------------------|------|-----|------------|---------------------|------|
| 1 | 98554-54 | SCREW (M4 x 8) | 3 | 42 | 98554-49 | NUT- (5MM) | 2 |
| 2 | 98555-48 | COVER- Muffler | 1 | 43 | 98554-69 | SPRING | 1 |
| 3 | A-98555-47 | MUFFLER ASSEMBLY | 1 | 44 | A-98554-68 | CARBURETOR ASSEMBLY | 1 |
| 4 | 98554-55 | GASKET | 1 | 45 | 98554-83 | TUBE | 1 |
| 5 | 98554-49 | NUT (5mm) | 2 | 46 | 98554-72 | GASKET | 1 |
| 6 | 98060-17 | WASHER (M5) | 2 | 47 | 98060-55 | SCREW | 2 |
| 7 | 98554-53 | STUD | 2 | 48 | 98554-71 | GASKET | 2 |
| 8 | 98554-82 | CAP- Tank | 1 | 49 | 98554-92 | COVER- Cylinder | 1 |
| 9 | 98060-61 | ELEMENT | 1 | 50 | 98554-90 | SCREW (M4 x 10) | 1 |
| 10 | 98554-81 | PIPE- Strainer | 1 | 51 | 98554-88 | COVER- Cylinder | 1 |
| 11 | 98060-63 | CLIP | 1 | 52 | 98554-89 | GASKET | 1 |
| 12 | 98060-60 | ELEMENT | 1 | 53 | 98554-50 | WASHER- Spring | 4 |
| 13 | 98060-62 | WEIGHT- Tank | 1 | 54 | 98554-47 | CYLINDER | 1 |
| 14 | A-98554-73 | TANK- Fuel (Incl. items 20 & 21) | 1 | 55 | 98554-48 | GASKET | 1 |
| 15 | 98554-76 | COLLAR | 3 | 56 | 63710-S | PLUG- Spark | 1 |
| 16 | 98554-77 | WASHER | 6 | 57 | 98060-90 | CAP- Plug | 1 |
| 17 | 98554-79 | WASHER | 6 | 58 | 98060-91 | SPRING | 1 |
| 18 | 98554-78 | WASHER | 3 | 59 | 98555-02 | GROMMET | 1 |
| 19 | 98554-75 | SCREW | 3 | 60 | 98554-95 | COIL- Ignition | 1 |
| 20 | 98060-67 | BREATHER | 1 | 61 | 98060-34 | NUT- (M8) | 1 |
| 21 | 98554-74 | CAP- Tank | 1 | 62 | 98554-99 | WASHER- Spring (M8) | 1 |
| 22 | 98063-36 | SEAL- Oil | 2 | 63 | 98555-01 | WASHER (M8) | 1 |
| 23 | A-98554-61 | CRANK CASE ASSEMBLY | 1 | 64 | 98555-03 | SCREW | 2 |
| | | Includes: | | 65 | 98554-94 | FLYWHEEL | 1 |
| 24 | 98552-68 | PIN- Dowel | 2 | 66 | 98060-97 | SCREW (M4 x 6) | 2 |
| 25 | 98060-43 | PIN- Dowel | 2 | 67 | 98555-04 | CLAMP | 1 |
| 26 | 98554-63 | STUD | 4 | 68 | 98554-91 | COVER- Cylinder | 1 |
| 27 | 98554-59 | WASHER | 1 | 69 | 98555-07 | LABEL- Horse power | 1 |
| 28 | 98554-60 | WASHER | 1 | 70 | 98555-08 | LABEL | 1 |
| 29 | A-98554-58 | CRANKSHAFT ASSEMBLY | 1 | 71 | 98554-86 | CASE- Volute | 1 |
| | | Includes: | | 72 | 98554-87 | SCREW (M4 x 16) | 4 |
| 30 | 98060-28 | BEARING- Needle | 1 | 73 | 98554-98 | SCREW (4 x 6) | 1 |
| 31 | 98060-83 | KEY | 1 | 74 | 98554-84 | WIRE- Lead | 1 |
| 32 | A-98063-25 | SHIM ASSEMBLY | 1 | 75 | 98060-45 | SCREW | 4 |
| 33 | 98552-67 | BEARING- Ball (6001V.) | 1 | 76 | 98554-96 | IGNITER | 1 |
| 34 | 98554-64 | BEARING- Needle | 1 | 77 | 98554-97 | BRACKET | 1 |
| 35 | A-98555-49 | PISTON & PIN ASSEMBLY | 1 | 78 | 98554-65 | DAMPER | 1 |
| | | Includes: | | 79 | A-98059 | PULLER- Rotor | 1 |
| 36 | 98060-26 | RING- Snap | 2 | 80 | 98555-77 | SCREW | 2 |
| 37 | 98554-57 | PISTON RING SET | 1 | 81 | A-98555-81 | SPARK ARRESTOR | 1 |
| 38 | 98554-66 | PUMP- Priming | 1 | 82 | 98555-78 | GASKET | 1 |
| 39 | 98554-67 | BRACKET | 1 | 83 | 98555-79 | MUFFLER GUARD | 1 |
| 40 | 98554-70 | INSULATOR | 1 | 84 | 98555-80 | SCREW | 2 |
| 41 | 98554-50 | WASHER- Spring | 2 | | | | |

ALWAYS FURNISH MODEL AND SERIAL NUMBER WHEN ORDERING PARTS.

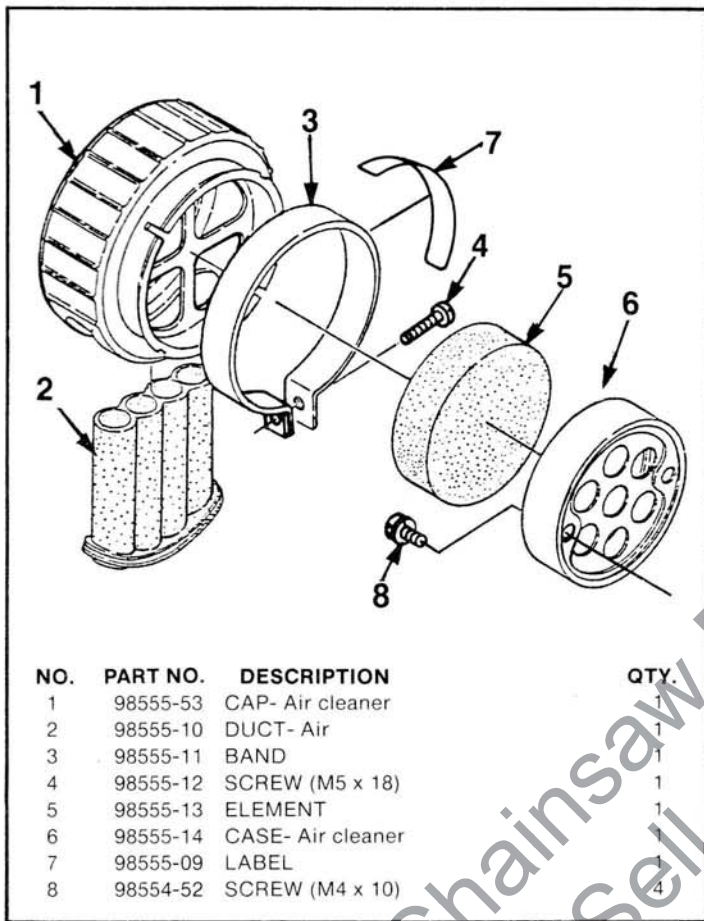
**HT-23
HEDGE TRIMMER**

FIGURE 3

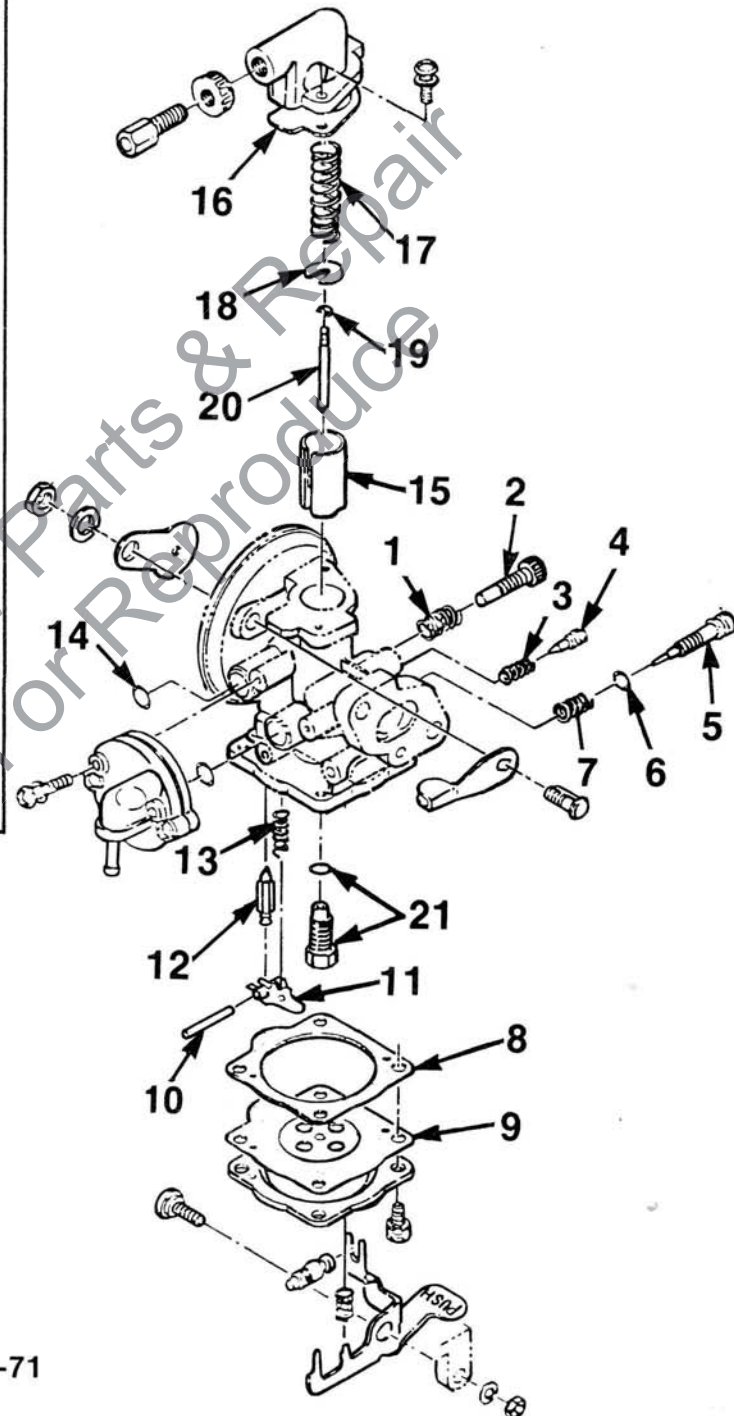


| NO. | PART NO. | DESCRIPTION | QTY. |
|-----|----------|------------------------|------|
| 1 | 98555-55 | SCREW | 1 |
| 2 | 98555-56 | RETAINER | 1 |
| 3 | 98061-03 | PAWL- Recoil | 1 |
| 4 | 98061-04 | SPRING | 1 |
| 5 | 98061-05 | SPRING- Return | 1 |
| 6 | 98555-43 | REEL- Recoil | 1 |
| 7 | 98061-07 | SPRING- Spiral | 1 |
| 8 | 98061-08 | ROPE (3.5 x 890) | 1 |
| 9 | 98555-44 | HANDLE- Recoil starter | 1 |
| 10 | 98555-45 | GUIDE- Rope | 1 |
| 11 | 98555-46 | CASE- Recoil | 1 |
| 12 | 98555-05 | SCREW (M4 x 10) | 4 |
| 13 | 98544 | DECAL | 1 |

ALWAYS FURNISH MODEL AND SERIAL NUMBER WHEN ORDERING PARTS.



| NO. | PART NO. | DESCRIPTION | QTY. |
|-----|----------|-------------------|------|
| 1 | 98555-53 | CAP- Air cleaner | 1 |
| 2 | 98555-10 | DUCT- Air | 1 |
| 3 | 98555-11 | BAND | 1 |
| 4 | 98555-12 | SCREW (M5 x 18) | 1 |
| 5 | 98555-13 | ELEMENT | 1 |
| 6 | 98555-14 | CASE- Air cleaner | 1 |
| 7 | 98555-09 | LABEL | 1 |
| 8 | 98554-52 | SCREW (M4 x 10) | 4 |



CARBURETOR

A-98554-68

- REPAIR KIT (1-16) A-98555-73
- NEEDLE JET KIT (16-21) A-98555-72
- GASKET/DIAPHRAGM KIT (8-9) A-98555-71

HOMELITE DIVISION OF TEXTRON INC.

P.O. BOX 7047
14401 CAROWINDS BOULEVARD
CHARLOTTE, N.C. 28217

OVERSEAS OFFICES

HOMELITE DIVISION OF TEXTRON INC.

Korenaarstraat I
2153 BM Nieuw Vennep
The Netherlands

HOMELITE DIVISION OF TEXTRON INC.

Pacific Limited
P.O. BOX 209
Blackburn, 3130
Victoria, Australia

Leon's Chainsaw Parts & Repair
Do Not Sell or Reproduce

HOMELITE **TEXTRON**

Homelite Division of Textron Inc.