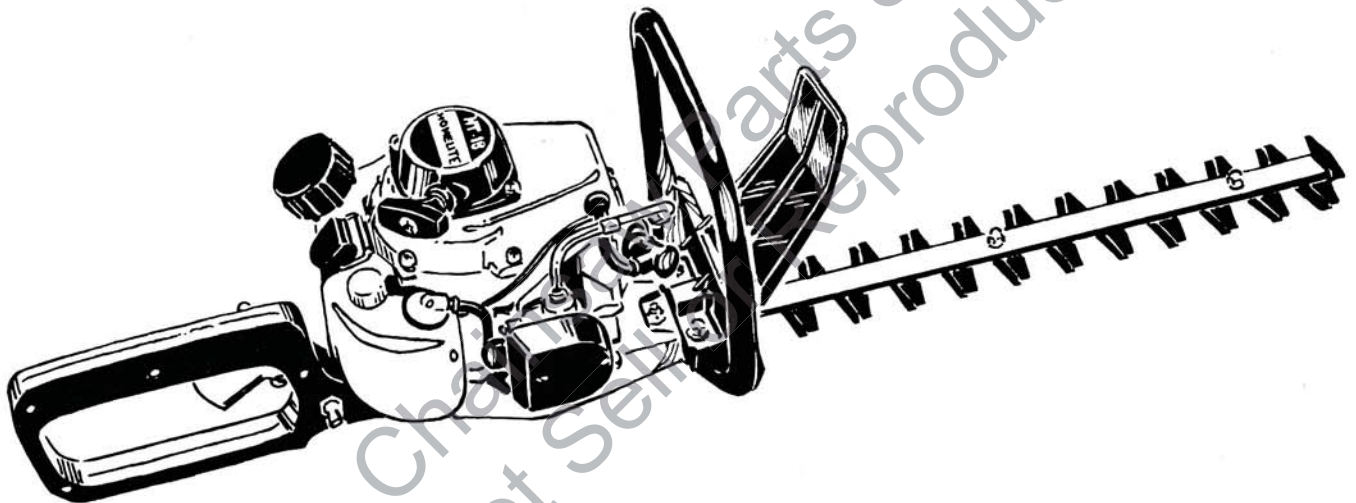


HOMELITE®

PART NO. 18339
PRINTED IN U.S.A.
PRICE \$1.00

PARTS LIST



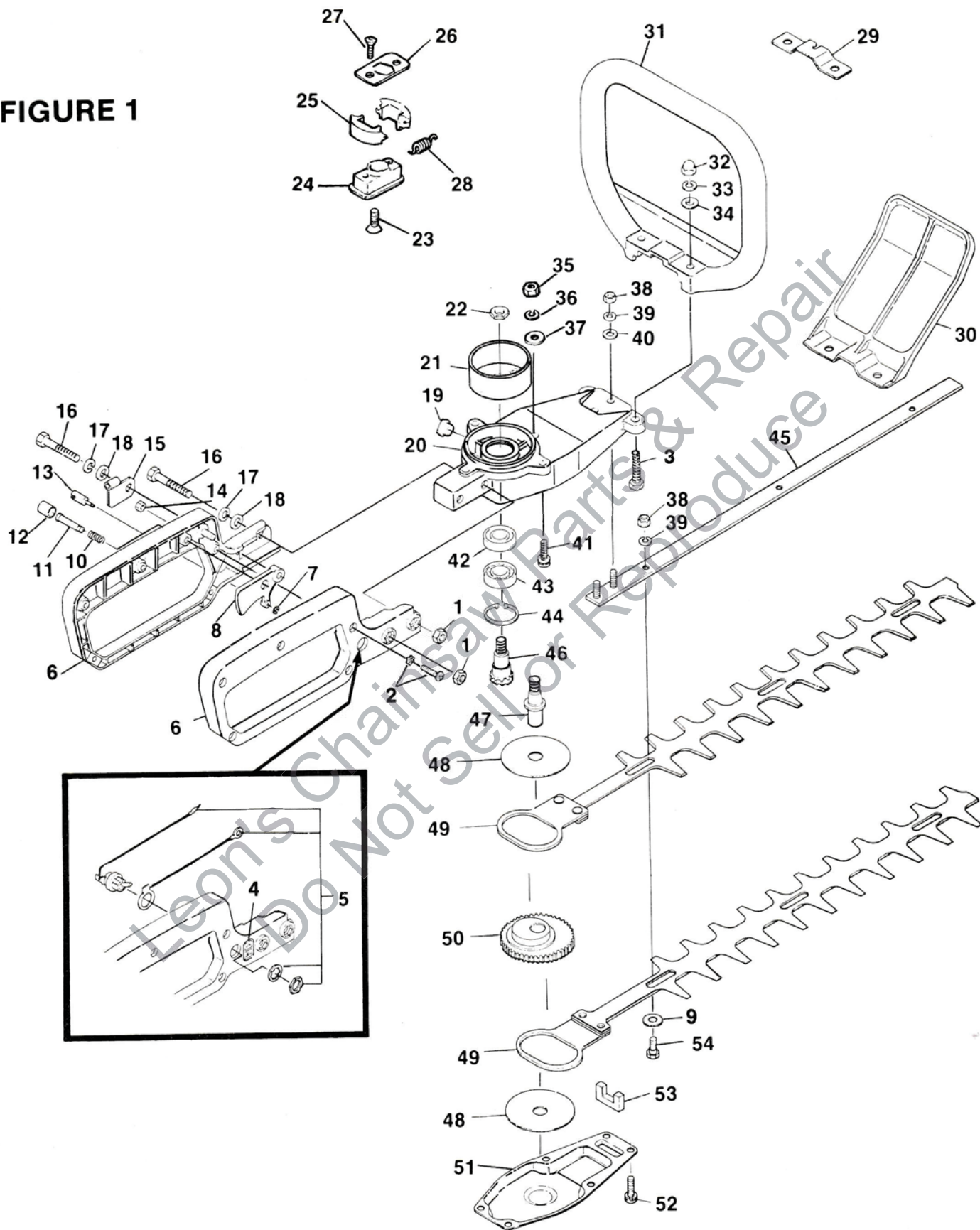
HT-18 HEDGE TRIMMER

HOMELITE **TEXTRON**

Homelite Division of Textron Inc.

HT-18
HEDGE TRIMMER

FIGURE 1



ALWAYS FURNISH MODEL AND SERIAL NUMBERS WHEN ORDERING PARTS.

**HT-18
HEDGE TRIMMER**

FIGURE 1

NO.	PART NO.	DESCRIPTION	QTY.	NO.	PART NO.	DESCRIPTION	QTY.
1	98554-37	NUT- (M6 mm)	2	30	98555-61	HAND GUARD	1
2	98553-61	SCREW- (M4 x 20 W/LW)	5	31	98553-58	HANDLE (Front)	1
3	98553-59	BOLT- (M6 x 35)	2	32	98553-60	NUT- Cap (M6)	2
4	98553-50	LABEL- Stop switch	1	33	98552-24	WASHER- Spring (M6)	2
5	A-98553-49	SWITCH & LEAD ASSEMBLY	1	34	98552-23	WASHER- (M6)	2
6	A-01979-01	HANDLE- Set	1	35-37	98553-41	NUT- (M8) (W/T. S.W. & P.W.)	1
7	98552-39	E RING	1	38	98552-17	NUT- Lock (M5)	5
8	98552-29	THROTTLE LEVER	1	39	98552-16	WASHER- Spring (M5)	5
9	98552-24	WASHER- Cutter	3	40	98552-18	WASHER (M5)	2
10	98552-37	SPRING- Throttle knob	1	41	98552-34	SCREW (M5 x 20)	3
11	98553-48	SHAFT- Throttle knob	1	42	98552-02	BEARING- Ball (6001ZZ)	1
12	98552-35	KNOB- Throttle	1	43	98552-03	BEARING- Ball (6001)	1
13	98552-40	GRIP- Throttle wire	1	44	98552-04	RING- Snap (R-28)	1
14	98552-32	NUT- (M4)	5	45	98553-45	GUIDE- Cutter	1
15	98553-47	STAY- Outer	1	46	98553-38	PINION	1
16-18	98552-33	BOLT- (M6 x 40)(W/T S.W. & P.W.)	2	47	98553-40	CRANKSHAFT	1
19	98553-51	FITTING- Grease	1	48	98552-10	CRANK PLATE	2
20	98552-01	CASE- Body	1	49	98552-12	BLADE- Cutter	2
21	98553-39	DRUM- Clutch	1	50	98553-43	GEAR- Crank	1
22	98552-07	NUT- (M8)	1	51	98553-55	CASE	1
23	98552-47	SCREW- (M6 x 18)	1	52	98552-21	BOLT- Cap (M5 x 12)	6
24	98552-42	GUIDE- Clutch	1	53	98552-20	FELT- Oil	1
25	98554-41	SHOE- Clutch	2	54	98553-46	BOLT- Cutter	3
26	98552-45	PLATE- Clutch	1	55	98552-15	WASHER- Cutter	3
27	98552-46	SCREW (M4 x 12)	2	56	98553-59	BOLT- (M6 x 35)	2
28	98554-42	SPRING- Clutch	2	57	98553-50	LABEL- Stop switch	1
29	98555-62	PLATE- Hand guard	1				

HT-18 HEDGE TRIMMER

FIGURE 2

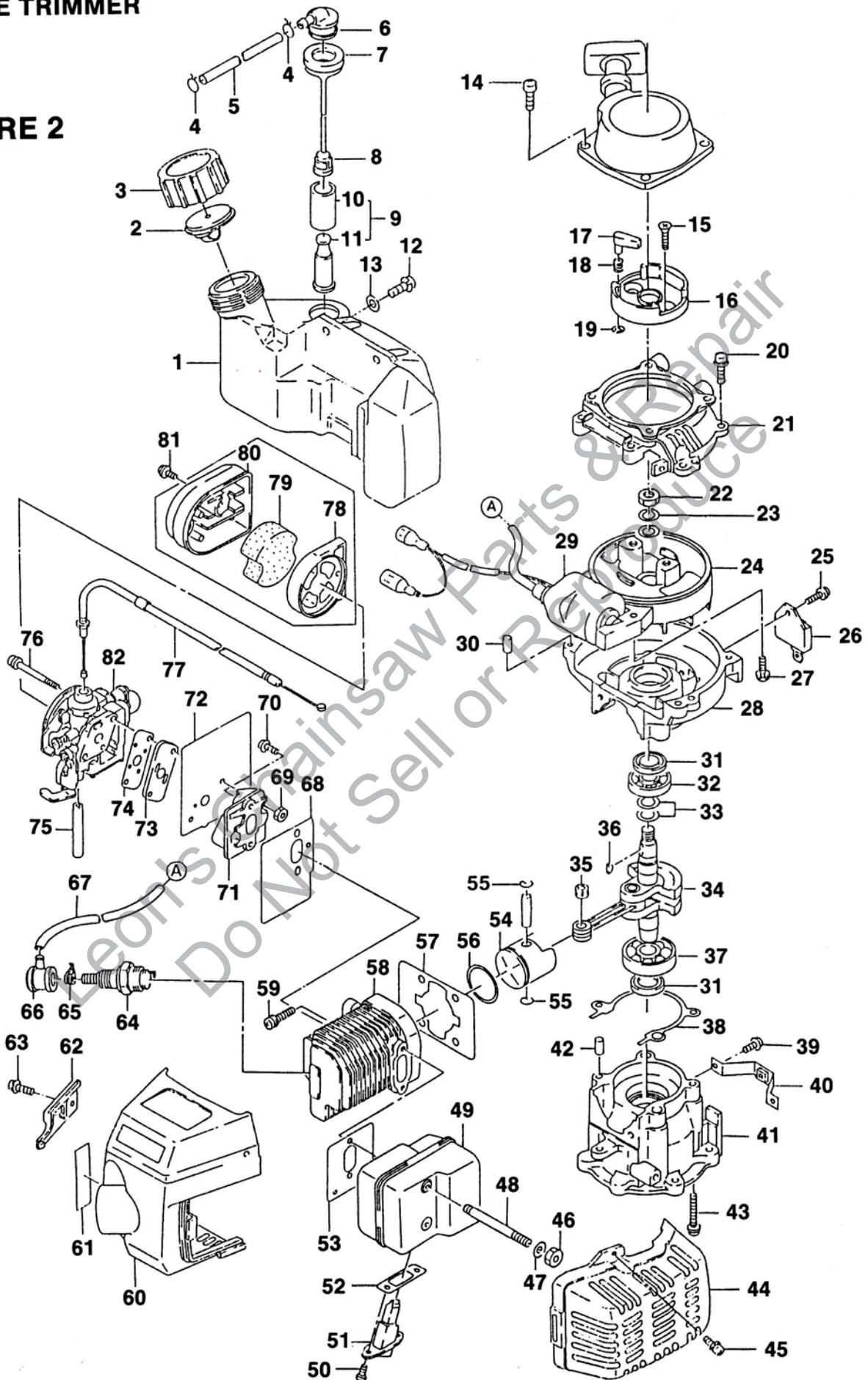
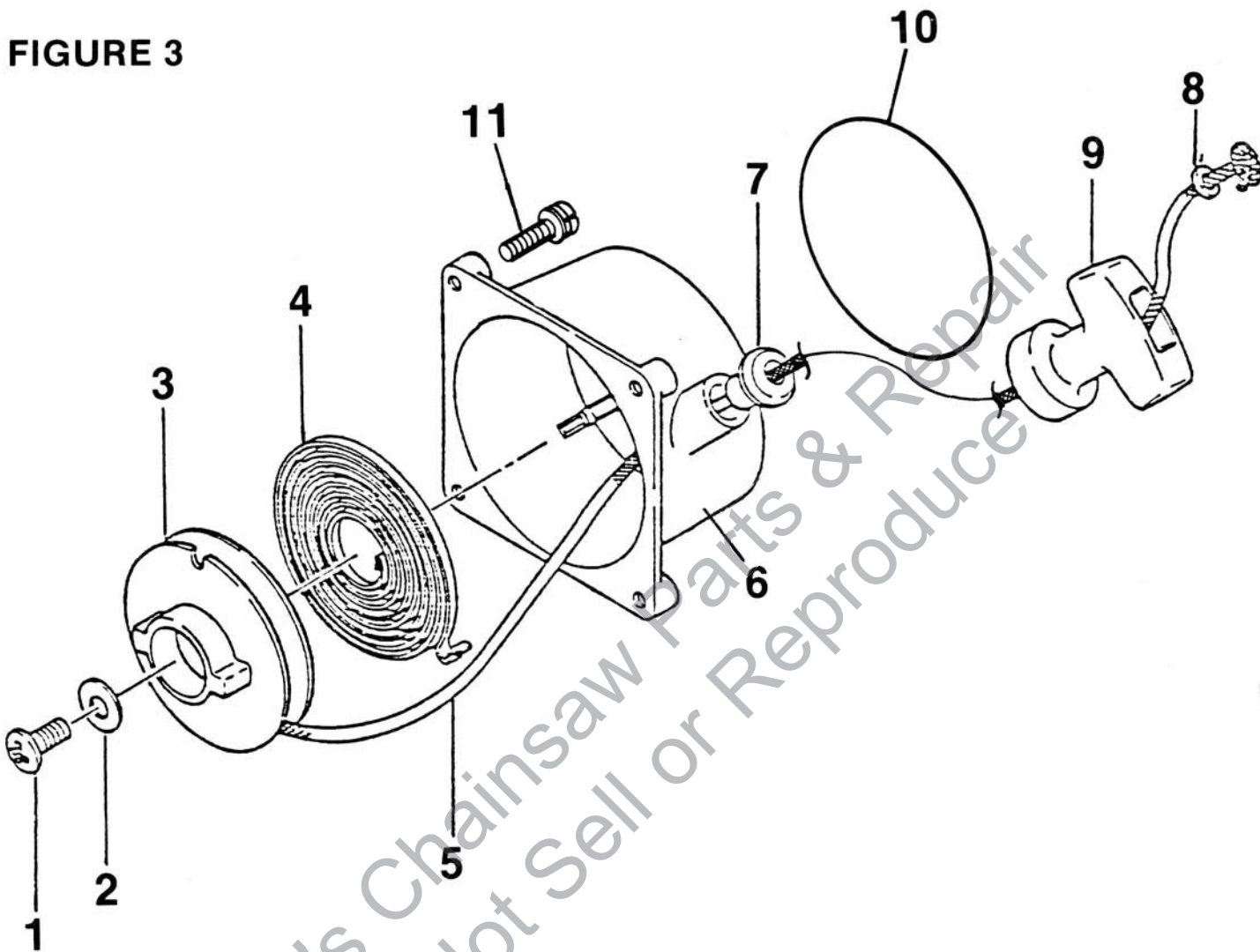


FIGURE 2

NO.	PART NO.	DESCRIPTION	QTY.	NO.	PART NO.	DESCRIPTION	QTY.
1	01324-09	TANK- Fuel	1	42	01324-05	PIN- Dowel	2
2	98060-67	BREATHER	1	43	98060-45	SCREW	4
3	98060-66	CAP- Tank	1	44	01324-02	COVER- Muffler	1
4	98552-82	CLIP	1	45	98555-80	SCREW- (m4 x 12)	3
5	01324-10	TUBE	2	46	98554-49	NUT- (5mm)	2
6	98552-78	JOINT	1	47	98060-17	WASHER	2
7	98552-79	PIPE- Strainer	1	48	01324-03	STUD	2
8	98060-63	CLIP	1	49	A-98553-34	MUFFLER	1
9	A-01324-39	FUEL FILTER ASSY. Includes:	1	50	98062-72	SCREW	2
10	98060-60	ELEMENT	1	51	98555-64	ARRESTOR- Spark	1
11	98060-62	WEIGHT- Fuel tank	1	52	98555-66	GASKET- Spark arrestor	1
12	01324-37	SCREW	3	53	01324-01	GASKET	1
13	01324-38	WASHER	3	54	A-01324-24	PISTON ASSY. Includes:	1
14	98552-74	SCREW	4	55	98060-26	RING- Snap	2
15	98553-04	SCREW (m6 x 16)	2	56	98552-59	RING- Piston	1
16	A-98552-99	PULLEY ASSEMBLY Includes:	1	57	98552-49	GASKET	1
17	98553-01	PAWL- Recoil	1	58	98552-48	CYLINDER	1
18	98553-03	SPRING	1	59	98552-50	SCREW	1
19	98553-02	RING- Snap	1	60	01324-13	SHROUD	1
20	98552-86	SCREW (m5 x 16)	4	61	00808-37	LABEL- Warning	1
21	01324-40	HOUSING- Fan	1	62	01324-14	COVER	1
22	98060-80	NUT (8mm)	1	63	98555-80	SCREW (m4 x 12)	3
23	98060-82	WASHER- Spring	1	64	63710-S	SPARK PLUG (CAR J8)	1
24	98552-92	FLYWHEEL	1	65	98060-91	SPRING	1
25	98553-62	SCREW (m4 x 8)	1	66	98060-90	CAP- Plug	1
26	00808-19	IGNITER	1	67	98550-33	TUBE	1
27	98552-93	BOLT- (5m x 24)	2	68	01324-06	GASKET	1
28	98552-64	CASE- Crank	1	69	98060-57	NUT	2
29	01324-19	COIL- Ignition	1	70	00808-44	SCREW	2
30	98060-43	PIN- Dowel	2	71	98552-70	INSULATOR	1
31	98063-36	SEAL- Oil	2	72	01324-07	GASKET	1
32	98063-35	BEARING- Ball	1	73	98552-72	PIPE- Intake	1
33	A-98063-25	SHIM ASSY.	1	74	98552-73	GASKET	1
34	A-01324-27	CRANKSHAFT ASSY. Includes:	1	75	98552-80	TUBE	1
35	98060-28	BEARING- Needle	1	76	98552-75	SCREW- (m5 x 45)	2
36	98060-83	KEY	1	77	98553-36	CABLE- Throttle	1
37	98552-67	BEARING- Ball	1	78	98552-52	CASE- Air filter	1
38	98552-66	GASKET	1	79	98552-53	ELEMENT	1
39	98552-91	SCREW- (m4 x 8)	2	80	98552-54	CAP- Air filter	1
40	01324-16	BRACKET- Tank	1	81	98552-55	SCREW- (m4 x 20)	2
41	01324-04	CASE- Crank	1	82	A-01324-28	CARBURETOR	1

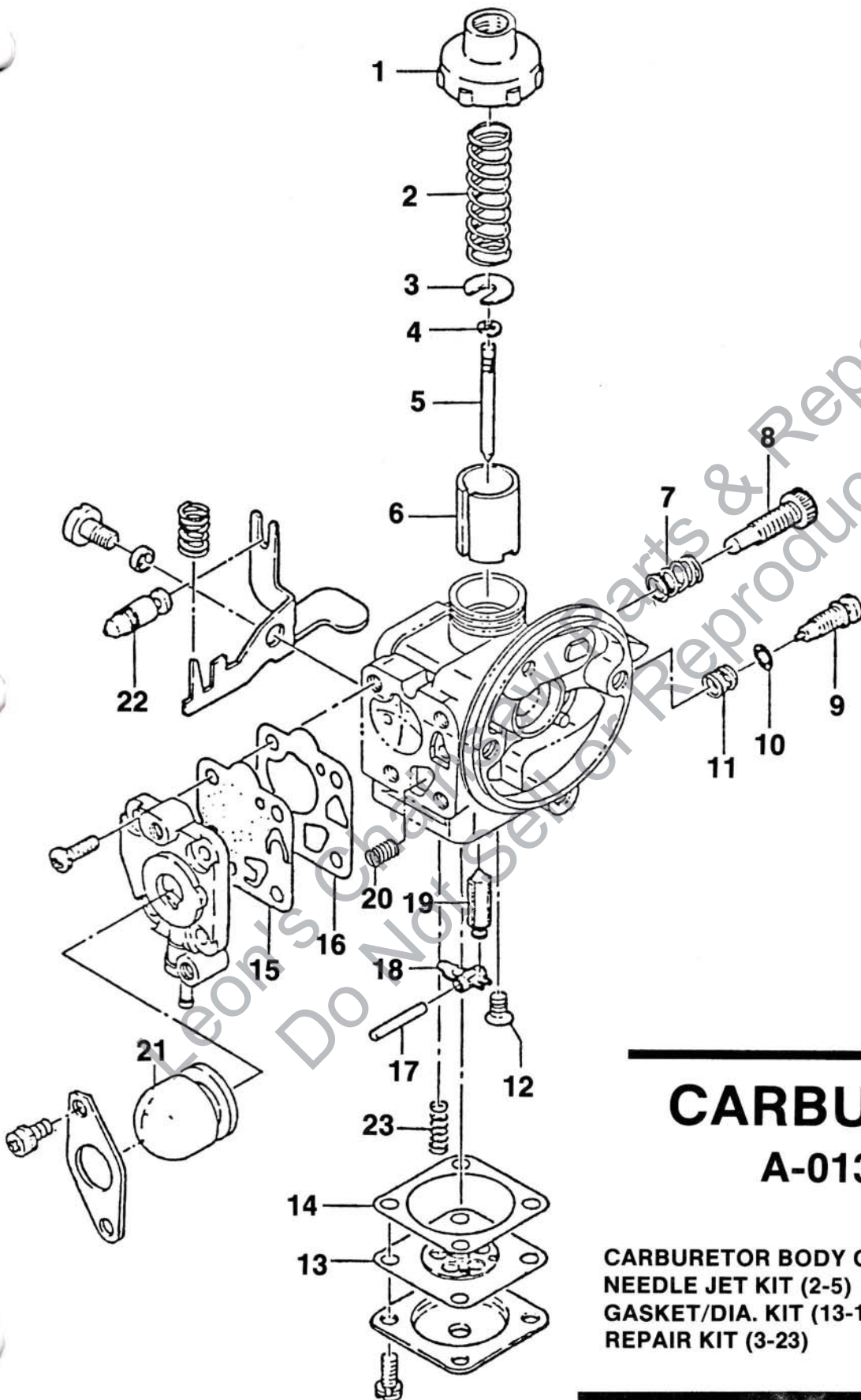
**HT-18
HEDGE TRIMMER**

FIGURE 3



NO.	PART NO.	DESCRIPTION	QTY.
1	98555-55	SCREW (M5 x 12)	1
2	98553-26	WASHER (M5)	1
3	98553-27	REEL- Recoil	1
4	98553-28	SPRING- Spiral	1
5	98553-29	ROPE- (3 x 890 mm)	1
6	98553-33	CASE- Recoil	1
7	98553-32	GUIDE- Rope	1
8	98553-31	WASHER	1
9	98553-30	HANDLE- Recoil starter	1
10	98845	DECAL	1
11	98552-74	SCREW (M5 x 18)	4

ALWAYS FURNISH MODEL AND SERIAL NUMBERS WHEN ORDERING PARTS.



CARBURETOR

A-01324-28

CARBURETOR BODY CAP (1)	98061-12
NEEDLE JET KIT (2-5)	A-01324-29
GASKET/DIA. KIT (13-16)	A-01324-36
REPAIR KIT (3-23)	A-01324-31

HEADQUARTERS

HOMELITE DIVISION OF TEXTRON INC.

P.O. BOX 7047

14401 CAROWINDS BOULEVARD

CHARLOTTE, N.C. 28241

OVERSEAS OFFICES

NETHERLANDS

HOMELITE TEXTRON
DIVISION OF TEXTRON ATLANTIC
(HDQS. — Europe, Africa and Middle East)
Haverstraat 24
2153 GB Nieuw Vennep
The Netherlands

ENGLAND

HOMELITE
DIVISION OF TEXTRON LIMITED
UNIT 22
Hither Green Industrial Estate
Clevedon, NR, Bristol
Avon, BS 21 6XU England

FRANCE

HOMELITE TEXTRON
UNE DIVISION DE TEXTRON
S.A.R.L.
Z.I. Du Vert-Galant
Rue Du Chateau/Rue De La Garenne
95310 Saint-Quen-L'Aumone
France

AUSTRALIA

HOMELITE DIVISION OF TEXTRON PACIFIC LIMITED
HEADQUARTERS
22 Tera - Cotta Drive
Blackburn, 3130
Victoria, Australia

HOMELITE DIVISION OF TEXTRON PACIFIC LIMITED
45 Robinson Road
Geebung, Queensland, 4034
Australia

CANADIAN OFFICES

HOMELITE

DIVISION OF TEXTRON CANADA LIMITED
1850 55th Avenue
Lachine, Quebec, Canada
H8T 3J5

3260 Viking Way
Richmond, British Columbia
V6V 1N6

16520, 111th Avenue
Edmonton, Alberta
T5M 3V8

37 Densley Avenue
Toronto, Ontario
M6M 2P5

45 Brandon Street
Moncton, New Brunswick
E1C 7E7

HOMELITE **TEXTRON**

Homelite Division of Textron Inc.