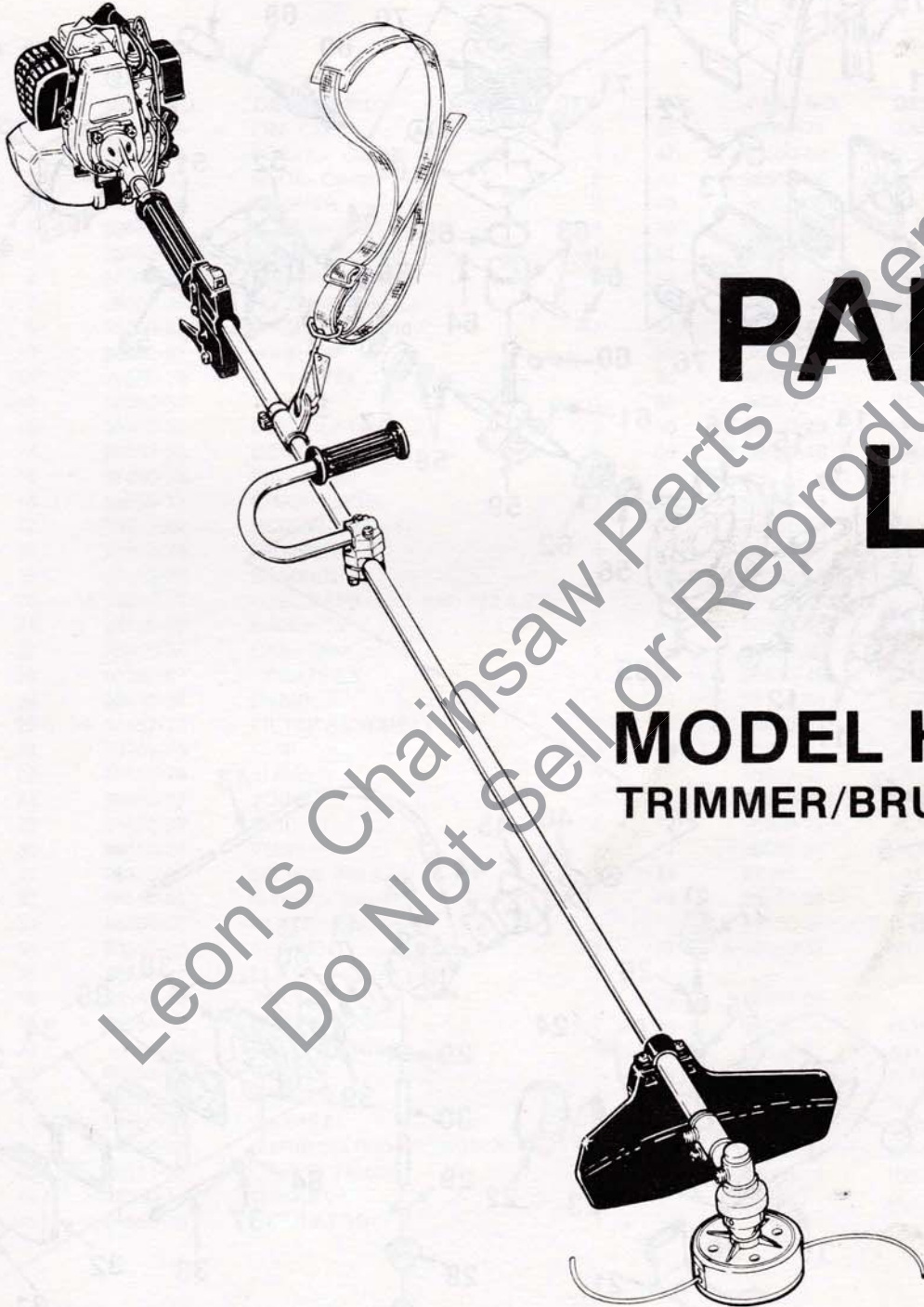


HOMELITE[®]
JACOBSEN

PART NO. 17885
PRINTED IN U.S.A.
PRICE .25



PARTS LIST

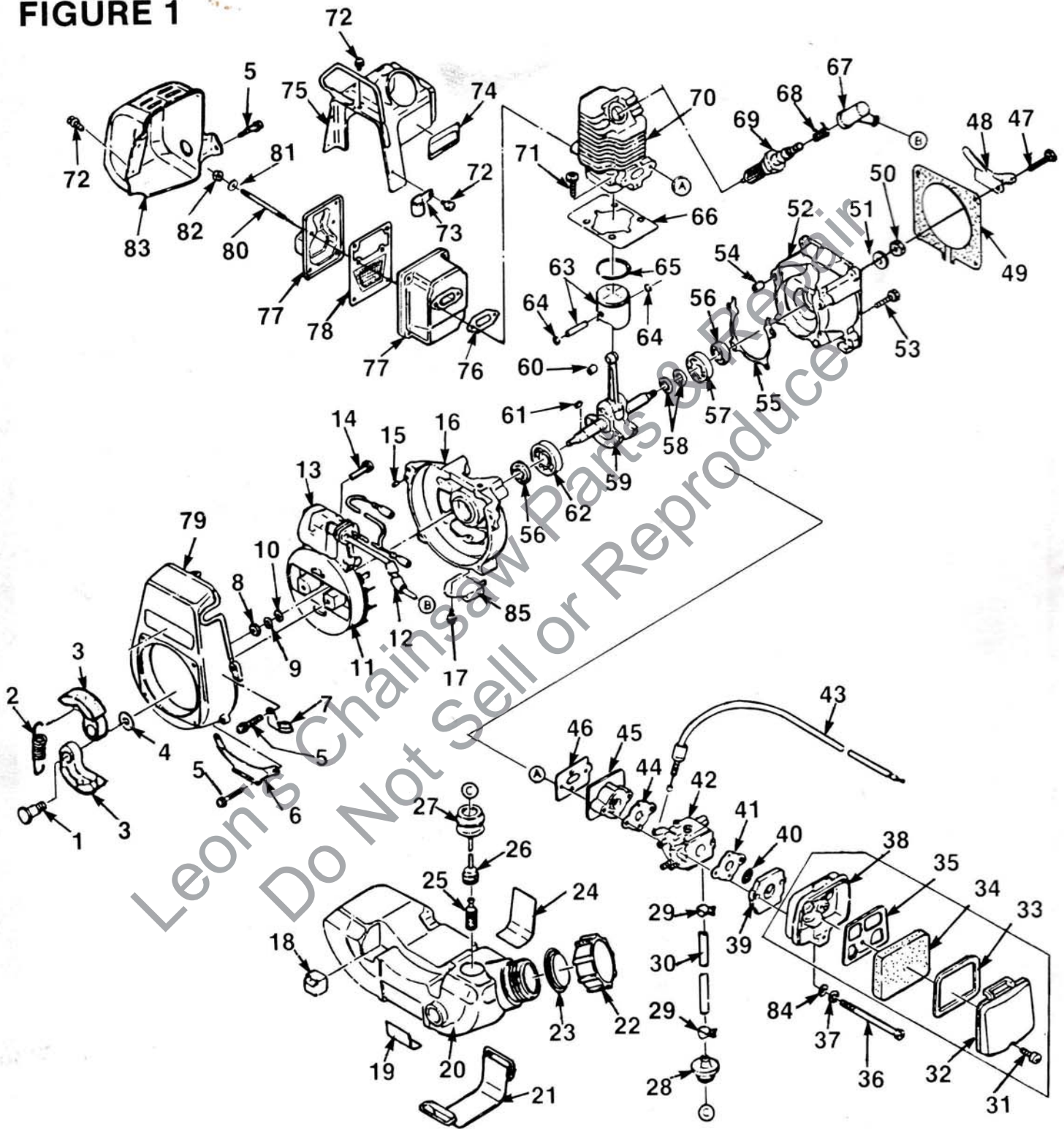
MODEL HK-18
TRIMMER/BRUSHCUTTER

HOMELITE **TEXTRON**

Homelite Division of Textron Inc.

HK-18 STRING TRIMMER

FIGURE 1



ALWAYS FURNISH MODEL AND SERIAL NUMBER WHEN ORDERING PARTS.

HK-18 STRING TRIMMER

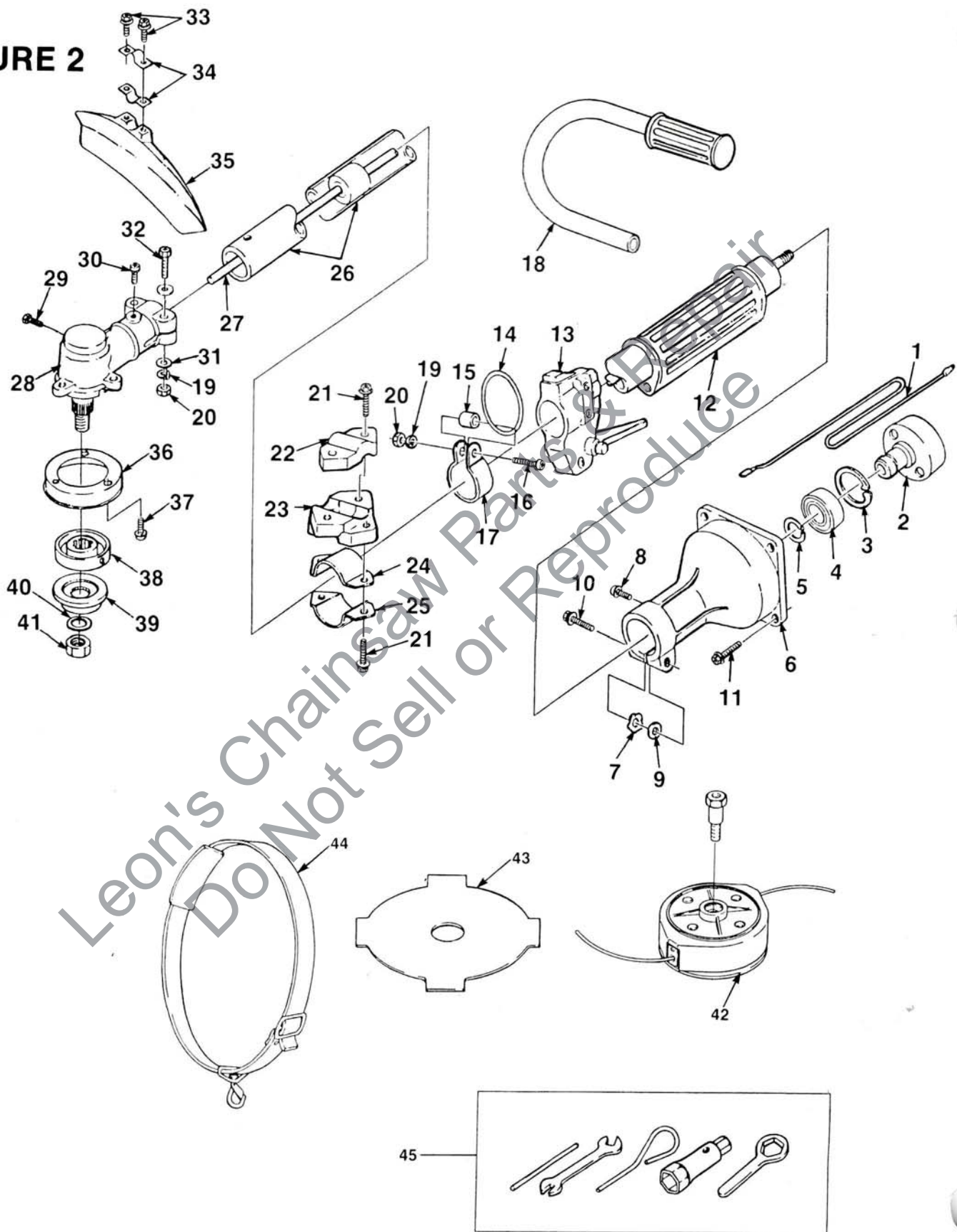
FIGURE 1

NO.	PART NO.	DESCRIPTION	QTY.	NO.	PART NO.	DESCRIPTION	QTY.
1	98060-36	PIN- Clutch	2	46	98552-71	GASKET	1
2	98060-38	SPRING- Clutch	1	47	98550-34	SCREW (M5 x 18)	4
3	98060-37	SHOE- Clutch	2	48	98550-26	BRACKET- Tank	1
4	98060-39	WASHER	2	49	98550-35	GASKET	1
5	98552-86	SCREW- (M5 x 16)	4	50	98060-80	NUT- (M6 MM)	1
6	98552-88	BRACKET- Tank	1	51	98060-81	WASHER- (M6)	1
7	98550-25	BRACKET- Cable	1	52	98550-18	CRANKCASE	1
8	98060-80	NUT- (M6 mm)	1	53	98060-45	SCREW	4
9	98060-82	WASHER- Spring	1	54	98552-68	PIN- Dowel	2
10	98060-81	WASHER	1	55	98552-66	GASKET	1
11	98550-29	FLYWHEEL	1	56	98060-48	SEAL- Oil	2
12	98550-33	TUBE	1	57	98060-47	BEARING- Ball (6000C3)	1
13	98550-30	COIL- Ignition	1	58	A-98060-29	SHIM ASSEMBLY	A/R
14	98552-93	BOLT- (M5 x 24)	2	59	A-98550-16	CRANK SHAFT ASSEMBLY	1
15	98060-43	PIN- Dowel	2			Includes:	
16	98550-17	CRANKCASE	1	60	98552-63	BEARING- Plain	1
17	98553-62	SCREW- (M4 x 8)	1	61	98060-83	KEY	1
18	98060-70	DAMPER	4	62	98060-46	BEARING- Ball (6200C3)	1
19	98552-90	DAMPER	1	63	A-98552-58	PISTON ASSEMBLY	1
20	A-98550-21	FUEL TANK (Incl. item #22 & 23)	1			Includes:	
21	98550-27	BAND- Tank	1	64	98552-61	RING- Snap	2
22	98060-66	CAP- Tank	1	65	98552-59	RING- Piston	1
23	98060-67	BREATHER	1	66	98552-49	GASKET	1
24	98550-28	DAMPER	1	67	98550-32	CAP- Plug	1
25	A-98552-77	FILTER ASSEMBLY	1	68	98060-91	SPRING	1
26	98060-63	CLIP	1	69	63710-S	SPARK PLUG (DJ7Y)	1
27	98552-79	TUBE	1	70	98552-48	CYLINDER	1
28	98550-22	JOINT	1	71	98552-50	SCREW	2
29	98552-82	CLIP	2	72	98060-22	SCREW (M4 x 10)	4
30	98550-23	TUBE	1	73	98552-94	CLAMP	1
31	98550-07	SCREW (M4 x 14)	1	74	98125	LABEL	1
32	98550-05	CAP- Air cleaner	1	75	98552-84	SHROUD	1
33	98550-06	PLATE- Air Cleaner	1	76	98552-56	GASKET	1
34	98550-03	ELEMENT	1	77	A-98550-12	MUFFLER ASSY.	1
35	98550-04	PLATE- Air cleaner	1			Includes:	
36	98550-08	BOLT	2	78	98551-33	SPARK ARRESTOR	1
37	98554-50	WASHER- Spring	2	79	98551-31	HOUSING- Fan	1
38	98550-02	CASE- Air filter	1	80	98552-57	STUD	1
39	98550-09	SPACER	1	81	98060-17	WASHER	2
40	98550-10	SCREEN	1	82	98060-16	NUT	2
41	98550-11	GASKET	1	83	98550-13	COVER- Muffler	1
42	A-98550-36	CARBURETOR ASSEMBLY	1	84	98060-17	WASHER	1
43	98551-32	CABLE- Throttle	1	85	98060-78	IGNITER	1
44	98550-11	GASKET	1		A-98059	PULLER- Rotor (Accessory)	1
45	98550-19	INSULATOR	1				

ALWAYS FURNISH MODEL AND SERIAL NUMBER WHEN ORDERING PARTS.

HK-18 STRING TRIMMER

FIGURE 2



ALWAYS FURNISH MODEL AND SERIAL NUMBER WHEN ORDERING PARTS.

HK-18 STRING TRIMMER

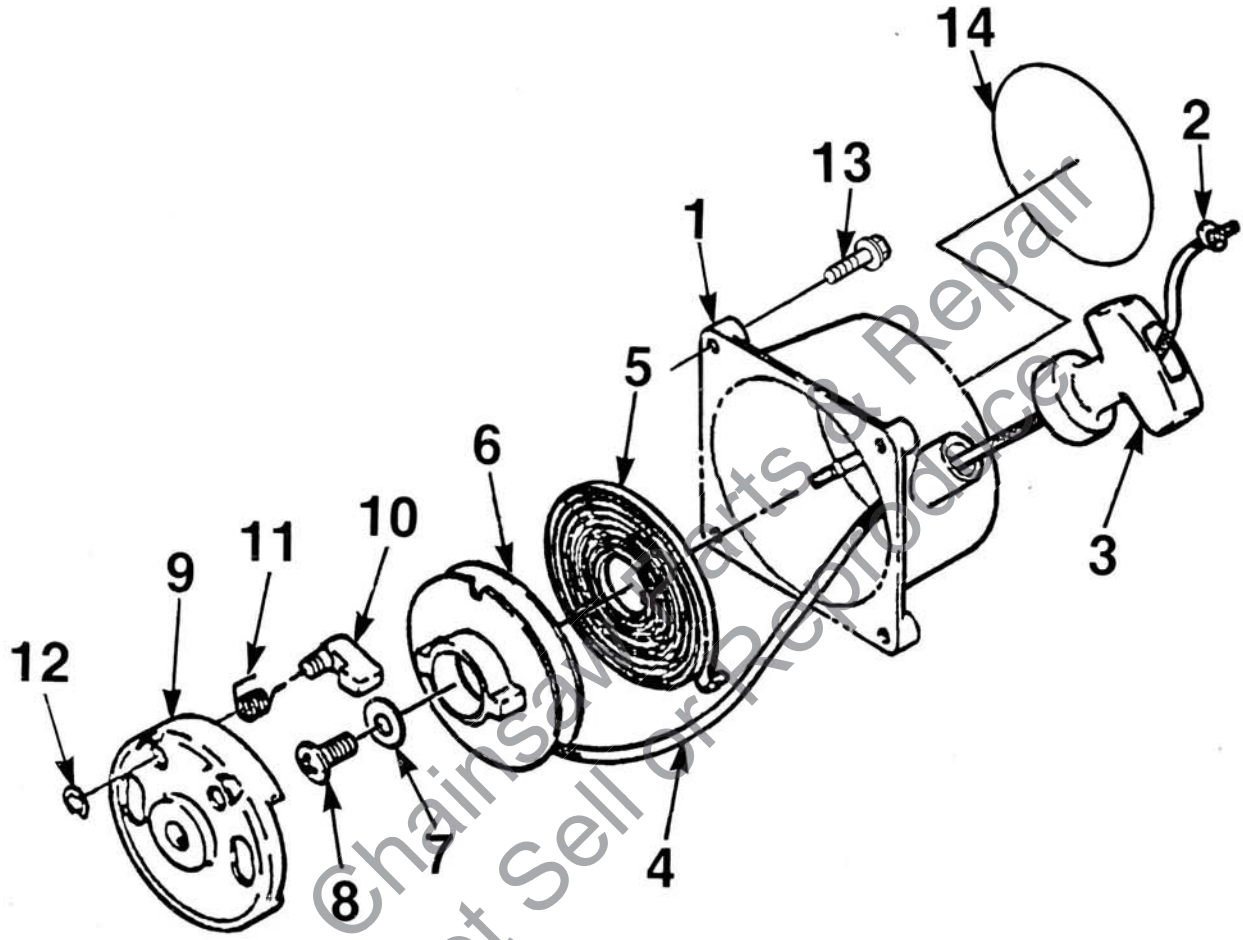
FIGURE 2

NO.	PART NO.	DESCRIPTION	QTY.	NO.	PART NO.	DESCRIPTION	QTY.
1	98550-90	LEAD- Wire	1	24	98550-94	SPACER	1
	A-98550-72	CLUTCH CASE ASSEMBLY	1	25	98550-95	BRACKET- Lower	1
		Includes:		26	A-98550-82	DRIVE SHAFT HOUSING	1
2	98550-74	DRUM- Clutch	1	27	98550-84	SHAFT- Drive	1
3	98551-09	RING- Stop	1	28	A-98550-98	GEAR CASE ASSEMBLY	1
4	98550-75	BEARING- Ball	1			Includes:	
5	98550-76	RING- Stop	1	29	98551-15	SCREW	1
6	98550-73	CASE- Clutch	1	30	98551-14	SCREW	1
7	98550-79	WASHER- Wave	1	31	98550-80	WASHER- Flat	1
8	98550-78	SCREW	1	32	98551-10	BOLT	2
9	98550-80	WASHER- Flat	1	98551-12	WASHER- Spring (see Fig. 19)	2	
10	98550-77	BOLT	1	98551-13	NUT (see Fig. 20)	2	
11	98550-81	BOLT	4	33	98551-18	SCREW	2
12	98550-85	GRIP	1	34	98551-17	STAY	2
13	98550-89	LEVER- Throttle	1	35	98551-16	DEFLECTOR	1
14	98550-87	RING- Hanger	1	36	98551-19	SHIELD	1
15	98550-88	SPACER	1	37	98551-20	SCREW	3
16	98551-30	SCREW	1	38	98551-21	FLANGE- Upper	1
17	98550-86	HANGER	1	39	98551-22	FLANGE- Lower	1
18	98550-91	U-HANDLE	1	40	98551-23	WASHER- Special	1
19	98551-12	WASHER- Spring	1	41	98551-24	NUT- Blade	1
20	98551-13	NUT	1	42	A-98551-36	STRING HEAD ASSEMBLY	1
21	98550-81	BOLT	2	43	98512	BLADE- Brush (8" 4T accessory)	1
22	98550-92	BRACKET- Top	1	44	98550-97	HARNESS	1
23	98550-93	BRACKET- Upper	1	45	A-98551-28	TOOL SET	1

ALWAYS FURNISH MODEL AND SERIAL NUMBER WHEN ORDERING PARTS.

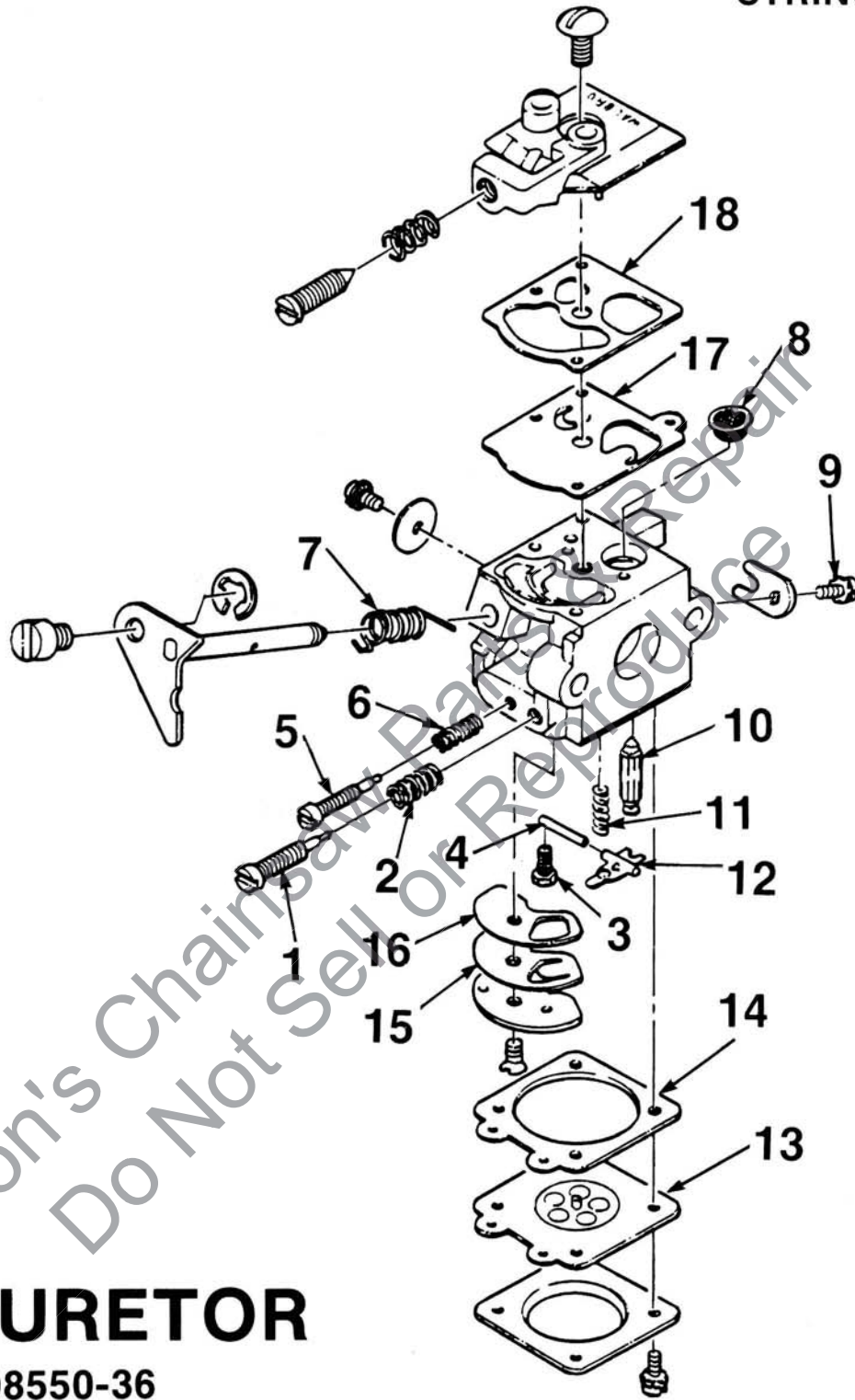
**HK-18
STRING TRIMMER**

FIGURE 3



NO.	PART NO.	DESCRIPTION	QTY.
1	A-98550-68	RECOIL STARTER ASSEMBLY	1
		Includes:	
2	98550-71	WASHER	1
3	98553-30	HANDLE- Recoil starter	1
4	98553-29	ROPE (3 x 890 MM)	1
5	98553-28	SPRING- Spiral	1
6	98553-27	REEL- Recoil	1
7	98553-26	WASHER (M5)	1
8	98550-70	SCREW (M5 x 8)	1
9	A-98550-69	PULLEY	1
		Includes:	
10	98553-01	PAWL- Recoil	1
11	98553-03	SPRING- Return	1
12	98553-02	E-RING	1
13	98550-34	SCREW	1
14	98528	DECAL	1

ALWAYS FURNISH MODEL AND SERIAL NUMBER WHEN ORDERING PARTS.



CARBURETOR

A-98550-36

REPAIR KIT

#A-98551-37 (1-18)

GASKET/DIAPHRAGM KIT

#A-98551-38 (13-18)

HOMELITE DIVISION OF TEXTRON INC.

P.O. BOX 7047
14401 CAROWINDS BOULEVARD
CHARLOTTE, N.C. 28217

OVERSEAS OFFICES

HOMELITE DIVISION OF TEXTRON INC.

Koreenaarstraat I
2153 BM Nieuw Vennepe
The Netherlands

HOMELITE DIVISION OF TEXTRON INC.

Pacific Limited
P.O. BOX 209
Blackburn, 3130
Victoria, Australia

Leon's Chainsaw Parts & Repair
Do Not Sell or Reproduce

HOMELITE **TEXTRON**

Homelite Division of Textron Inc.