

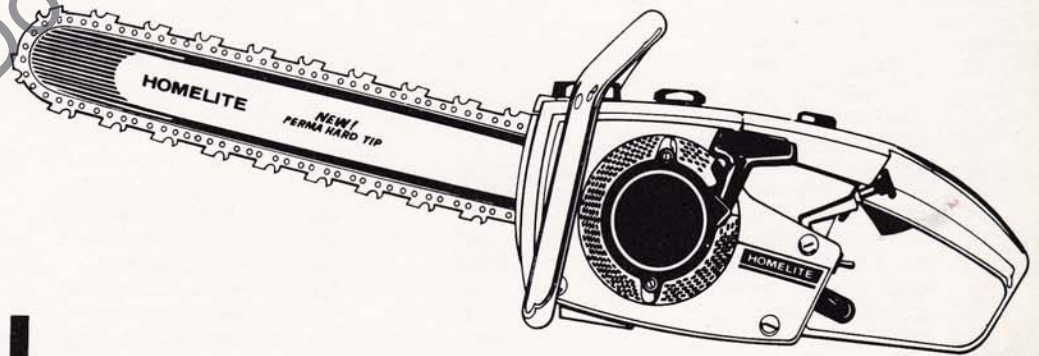
PARTS LIST

HOMELITE®

EZ

EZ AUTOMATIC

CHAIN SAWS



XL MINI

XL MINI AUTOMATIC & FP

PRICE .35

PART NO. 24323 - A

EZ EZ Automatic

XL Mini XL Mini Automatic

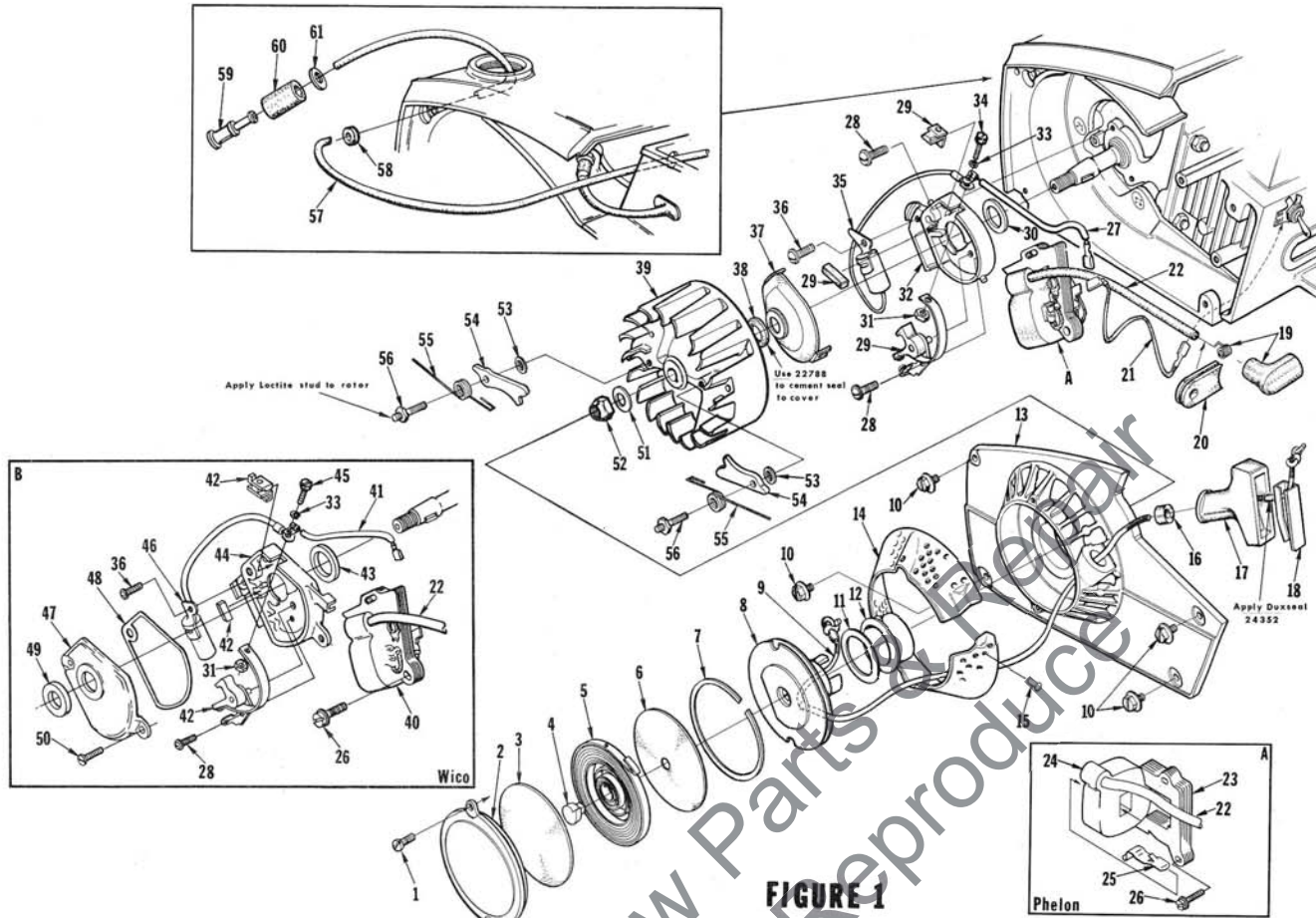


FIGURE 1

No.	Description	Part No.	Qty.	No.	Description	Part No.	Qty.
1	SCREW-pan, 8-32 x 3/8	80577	2	34	SCREW-hex, 6-32 x 7/16	(P) 67628	1
2	COVER-starter	65085-2	1	35	CONDENSER (See Note 4)	(P) 65286	1
3	SHIELD-spring (inner)	65113	1	36	SCREW-pan, 6-32 x 1/2	80630	1
4	LOCK-spring	65102	1	37	COVER-breaker box	(P) A-65210-A	1
5	SPRING-rewind	65107	1	38	Includes: SEAL-felt	(P) 65211	1
6	SHIELD-spring (outer)	65114	1	39	ROTOR-magneto (See Note 1)	(P) 65288	1
7	RING-retaining	65125	1		ROTOR-magneto	(W) 68701	1
8	PULLEY & CUP	A-65170	1	40	COIL & CORE	(W) 68716	1
9	ROPE-starter, 46 inches	65118	1	41	LEAD GROUP-primary	(W) 68712	1
10	SCREW-hex, 10-32 x 5/8	80704	4	42	POINTS-breaker	(W) A-68710	1
11	SHIELD-pulley	65893	1		Includes:		
12	BUSHING-starter cup	65116	1	43	SEAL-felt	(W) 68705	1
13	HOUSING-rewind starter	A-65222-1	1		WASHER-thrust (not shown)	(W) 28028	as req'd
	Includes:				LOCK-break arm (not shown)	(W) 28008	1
14	SCREEN-air inlet	65189	1	44	BOX-breaker	(W) 68708	1
15	STUD-drive #2	67191	3	45	SCREW-hex, 6-32 x 1/2	(W) 68700	1
16	BUSHING-starter rope	65185	1	46	CONDENSER	(W) 68711	1
17	GRIP-starter rope	65183	1	47	COVER-breaker box	(W) A-68704	1
18	INSERT-rope retaining	68837	1		Includes:		
19	TERMINAL-spark plug	A-65198	1	48	GASKET-breaker box cover	(W) 68774	1
20	GROMMET-hi-tension lead	65135	1	49	SEAL-felt	(W) 68773	1
21	LEAD-ground	A-63939	1	50	SCREW-cover mounting	(W) 68715	2
22	LEAD-hi-tension	65205	1	51	WASHER-flat, 5/16	84065-1	1
23	CORE-coil (See Note 1)	(P) 68255	1	52	NUT-hex, 5/16-24	81112	1
24	COIL-ignition (See Note 1)	(P) 68256	1	53	WASHER-starter pawl	65110	2
25	RETAINER-coil	(P) 68257	1	54	PAWL-starter	65108	2
26	SCREW-coil core	64021	2	55	SPRING-starter pawl	65120	2
27	LEAD GROUP-primary	(P) 65291	1	56	STUD-starter pawl	65109	2
28	SCREW-pan, 6-32 x 3/8	80571	2	57	LINE-fuel (Note 3)	A-68053	1
29	POINTS-breaker (See Note 2)	(P) A-65203-A	1	58	Includes: GROMMET	68046	1
30	Includes: SEAL-felt	(P) 65209	1	59	FILTER-fuel	A-63920	1
31	NUT-hex	65207	1	60	Includes: FILTER-felt	64083-1	1
32	BOX-breaker	(P) 65206-A	1	61	WASHER	64182	1
33	WASHER-lock #6	83004-1	1				

Complete magneto must be either Wico or Phelon. Phelon and Wico parts are not individually interchangeable.

(P) Phelon parts (A)
(W) Wico parts (B)

EZ

EZ Automatic

XL Mini

XL Mini Automatic

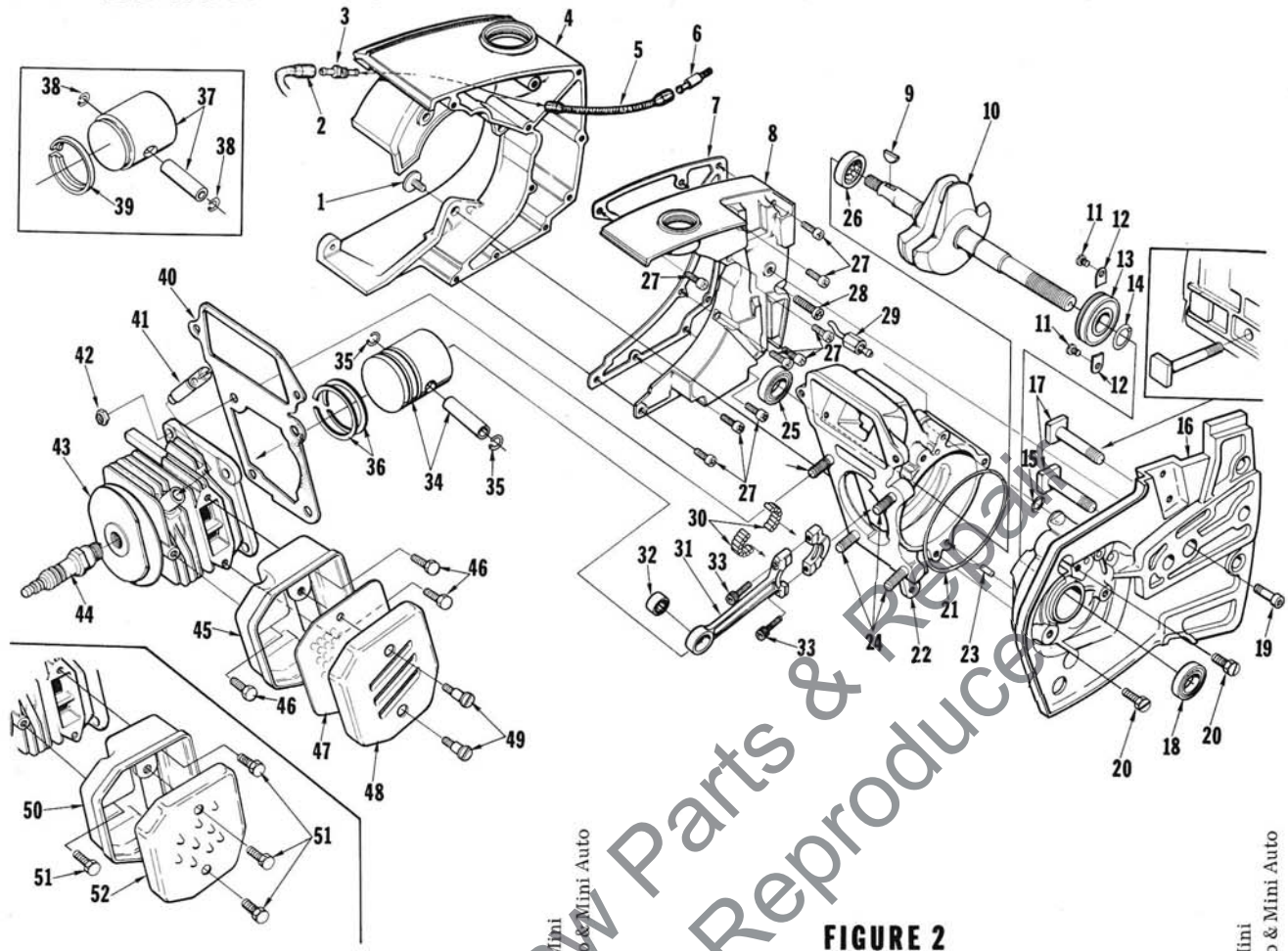


FIGURE 2

No.	Description	Part No.	EZ & Mini EZ Auto & Mini Auto	Qty.	No.	Description	Part No.	EZ & Mini EZ Auto & Mini Auto	Qty.
1	SCREW-retaining	65321	x	3	29	LINE-oil	A-65214	x x	1
2	LINE-oil	65137	x	1	30	BEARING-needle (set of 28)	A-65009	x x	1
3	FITTING-oil line	65138	x	1	31	ROD-connecting	A-65213	x x	1
4	TANK-fuel and oil	65037-2	x	1	32	Inc: BEARING-needle	65007	x x	1
5	LINE-oil (pick-up)	58340-B	x	1	33	SCREW-soc., 8-32 x 9/16	80805	x x	2
6	FILTER-oil	A-65172	x	1	34	PISTON & PIN	A-65196-A	x	1
	FILTER-oil	A-59009	x	1	35	Inc: RING-retaining	65261	x	2
7	GASKET-fuel & oil tank	65046	x x	1	36	PISTON RING	65003	x	2
8	COVER-fuel & oil tank	65115-2	x	1	37	PISTON & PIN	A-65197-A	x	1
	COVER-fuel & oil tank	65038-2	x	1	38	Inc: RING-retaining	65261	x	2
9	KEY-woodruff	65126	x x	1	39	PISTON RING-"L" shaped	65193	x	1
10	CRANKSHAFT	65006-1	x	1	40	GASKET-cylinder	65018	x x	1
	CRANKSHAFT	65006-2	x	1	41	VALVE-compression release	A-65184	x x	1
11	SCREW-bearing retaining	59704	x x	2	42	NUT-hex, 1/4-28	81065-2	x x	4
12	WASHER-lock, special	63905	x x	2	43	CYLINDER-1-7/16" dia.	A-65180-1	x	1
13	BEARING-ball	65044-S	x x	1		CYLINDER-1-1/2" dia.	A-65036-1	x	1
14	RING-retaining	65045	x x	1	44	SPARK PLUG	65130-S	x	1
15	"O" RING	59074	x x	1		MUFFLER-Louver (See Note 5)	A-65275	†	x
16	DRIVECASE	A-65201	x	1	45	Inc: BODY-muffler	A-65152-2	†	x
	DRIVECASE	A-65200	x	1	46	SCREW-hex, 10-32 x 3/8	80870	†	x
17	Inc: BOLT-guide bar	65025	x x	2	47	BAFFLE-muffler	65067	†	x
18	SEAL	65019	x x	1	48	CAP-muffler	65066-1	†	x
19	SCREW-fil., drivecase retainer	65157	x x	1	49	SCREW-shoulder	64133-A	†	x
20	SCREW-hex Spinlock, 12-24 x 5/8	80676	x x	3		MUFFLER-can type	A-68491	†	x
21	"O" RING	65127	x x	1	50	Inc: BODY-muffler	A-68433-1	x	1
22	CRANKCASE	A-65202	x x	1	51	SCREW-hex, 10-32 x 3/8	80870	x	5
	Inc: PIN-dowel	65153	x x	1	52	CAP-muffler	68431-1	x	1
23	STUD-cylinder	55871	x	4		MUFFLER-diffuser type (not shown)	A-68254	†	†
24	SEAL	65019	x x	1		Inc: BODY-muffler	A-65152-2	†	†
25	BEARING-roller	65179	x x	1		SCREW-hex, 10-32 x 3/8	80870	†	†
26	SCREW-fil., 8-32 x 5/8	82146	x x	9		CAP-muffler	68253-1	†	†
27	SCREW-fil., 8-32 x 5/16	82151	x	1		SCREW-shoulder	64133-A	†	†
28	SCREW-fil., 8-32 x 1-7/16	82187	x	1					

† Optional

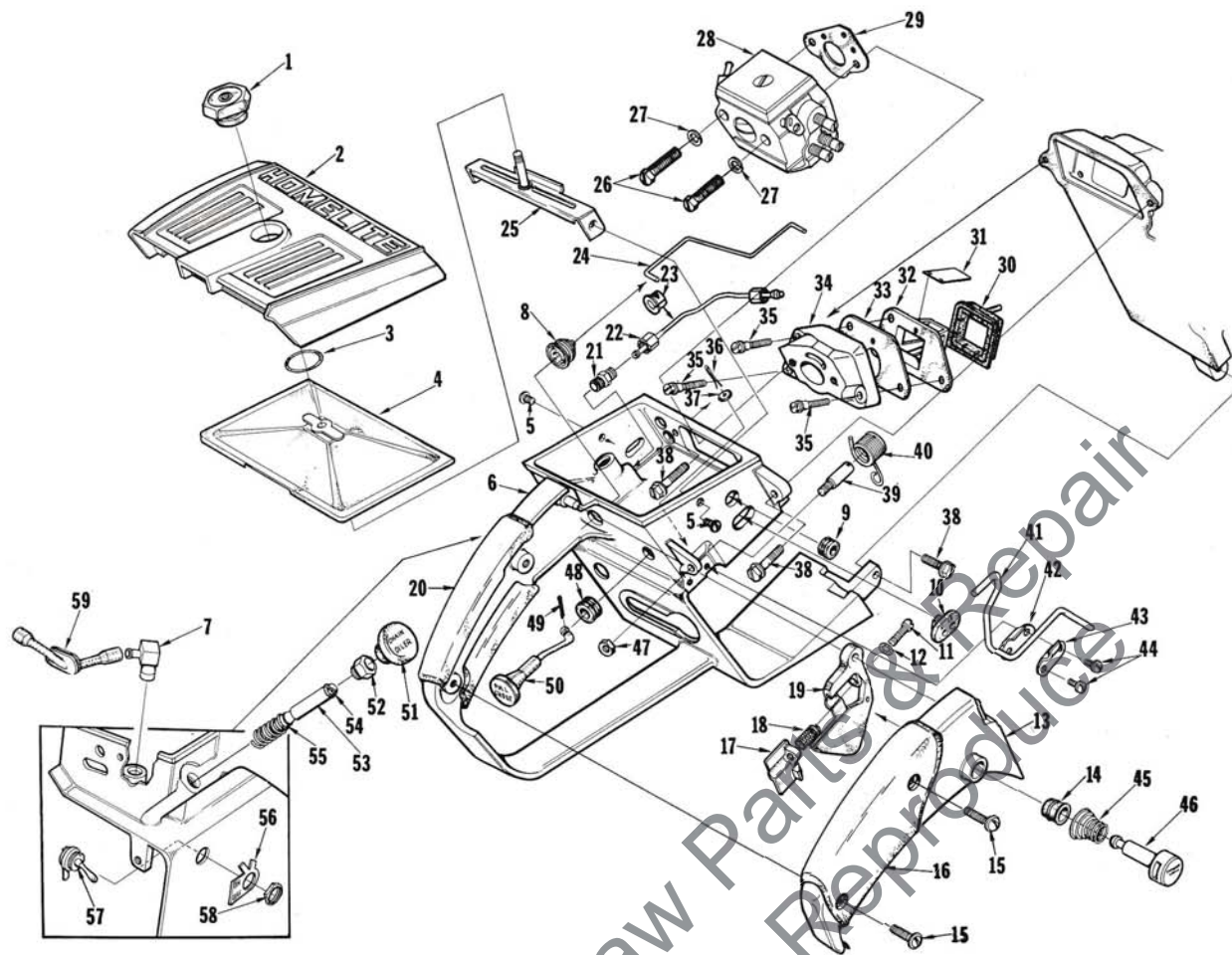


FIGURE 3

No.	Description	Part No.	Qty.	No.	Description	Part No.	Qty.
1	NUT-cover mounting	A-65272	1	29	GASKET-carburetor	65016	1
2	COVER-air filter	65096-5	1	30	RETAINER-reed valve	65011-A	1
3	RING-retaining	38319-A	1	31	REED-valve	65012-A	4
4	FILTER ELEMENT-air	A-65178	1	32	SEAT-reed valve	65010	1
5	SCREW-pan hd., 8-32 x 3/8	80577	2	33	GASKET-reed valve seat	65014	1
6	HANDLE-throttle	A-68267-A	1	34	MANIFOLD-intake	A-65154-1A	1
	Includes:			35	SCREW-shoulder	64349-A	3
7	VALVE-check	A-65076	1	36	PIN-cotter, 1/16 x 1/2 (Auto Models Only)	86301	1
8	BOOT-throttle rod (See Note 9)	67634	1	37	WASHER-felt (Auto Models Only)	63290	1
9	GROMMET-idle adjusting (Note 10)	68197	1	38	SCREW-hex, 12-24 x 5/8	80676	3
10	GROMMET-"Hi-Lo" (Note 10)	68196	1	39	POST-spring	65023	1
	LINE-fuel (not shown)	A-68053	1	40	SPRING-release valve	65174	1
	Includes: GROMMET (not shown)	68046	1	41	LEVER-release	65173	1
11	SCREW-pan, 6-40 x 1	82198	1	42	PLATE-lever	65092	1
12	"O" RING	65260	1	43	CLAMP-lever	65093	1
13	COVER-throttle handle (Note 6)	68852-2	1	44	SCREW-pan, 6-32 x 3/8	80571	2
14	BUSHING (Note 8)	67752	1	45	SPRING-throttle latch	64677	1
15	SCREW-pan, 8-32 x 1/2	80560	2	46	PIN-throttle latch	65171-A	1
16	GRIP-throttle handle cover	68759	1	47	NUT-hex, #6-32	81126	1
17	STOP-throttle adjustment (Note 7)	65147-A	1	48	GROMMET-choke	64862	1
18	SPRING-throttle stop	65188	1	49	PIN-cotter, 1/32 x 1/2	86324	1
19	TRIGGER-throttle	65031-1	1	50	ROD-choke	65072-1	1
20	GRIP-throttle handle	68770	1	51	BUTTON-oil pump	65084	1
21	VALVE-check (outlet)	A-65077	1	52	NUT-plunger	65082	1
22	LINE-oil	A-65214	1	53	PLUNGER-oil pump	A-68061-A	1
23	GROMMET-oil line	65085	1	54	Includes: "O" RING	59074	1
24	ROD-throttle	65056	1	55	"O" RING	58406	1
25	BRACKET-air filter cover	A-65123	1	56	PLATE-"On-Off"	63910	1
26	SCREW-hex, 10-32 x 1-5/8	82165	2	57	SWITCH-grounding	A-63938	1
27	WASHER-lock, #10	83046	2	58	Includes: NUT-hex	72084-A1	1
28	CARBURETOR- HDC-4 (Note 11)	A-68415	1	59	LINE-oil	65137	1

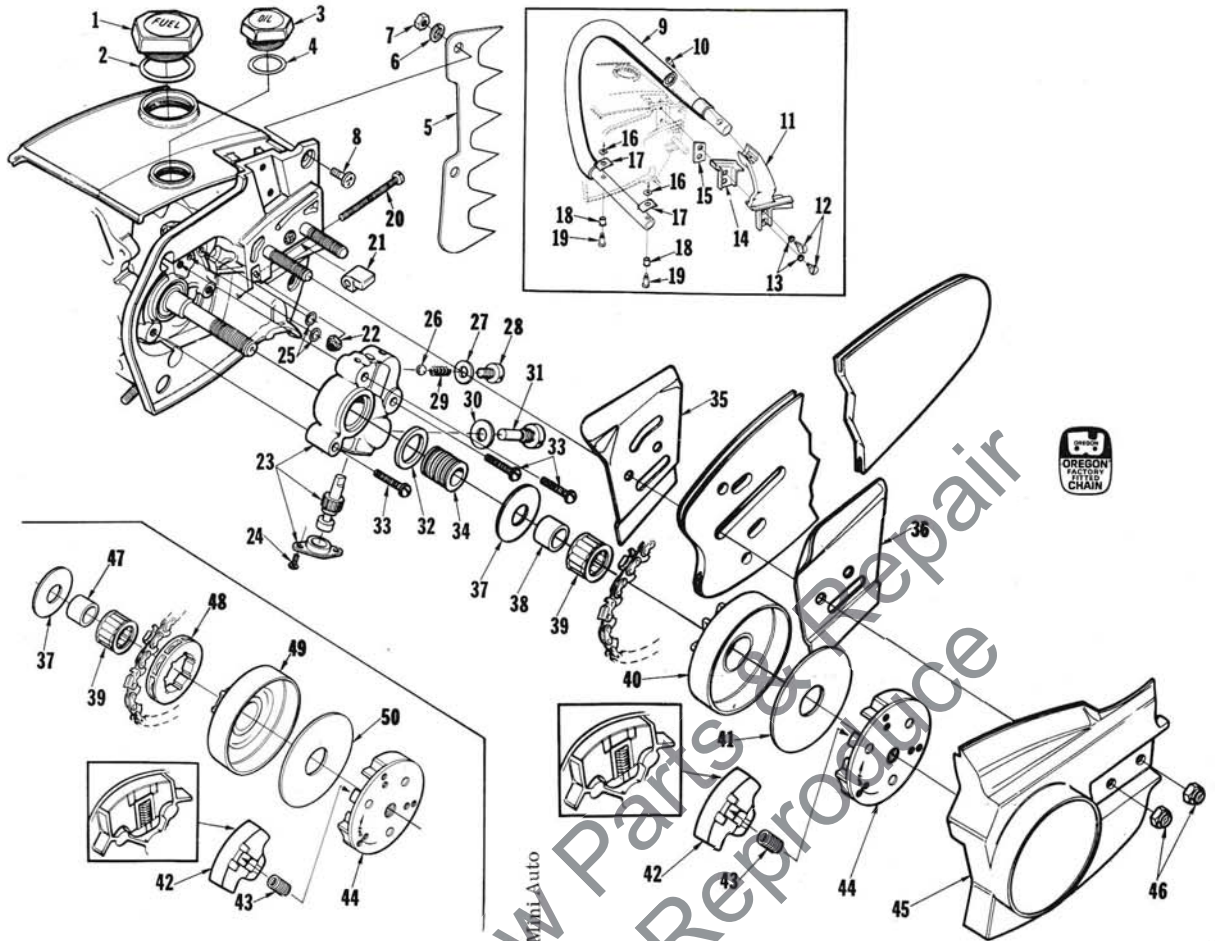
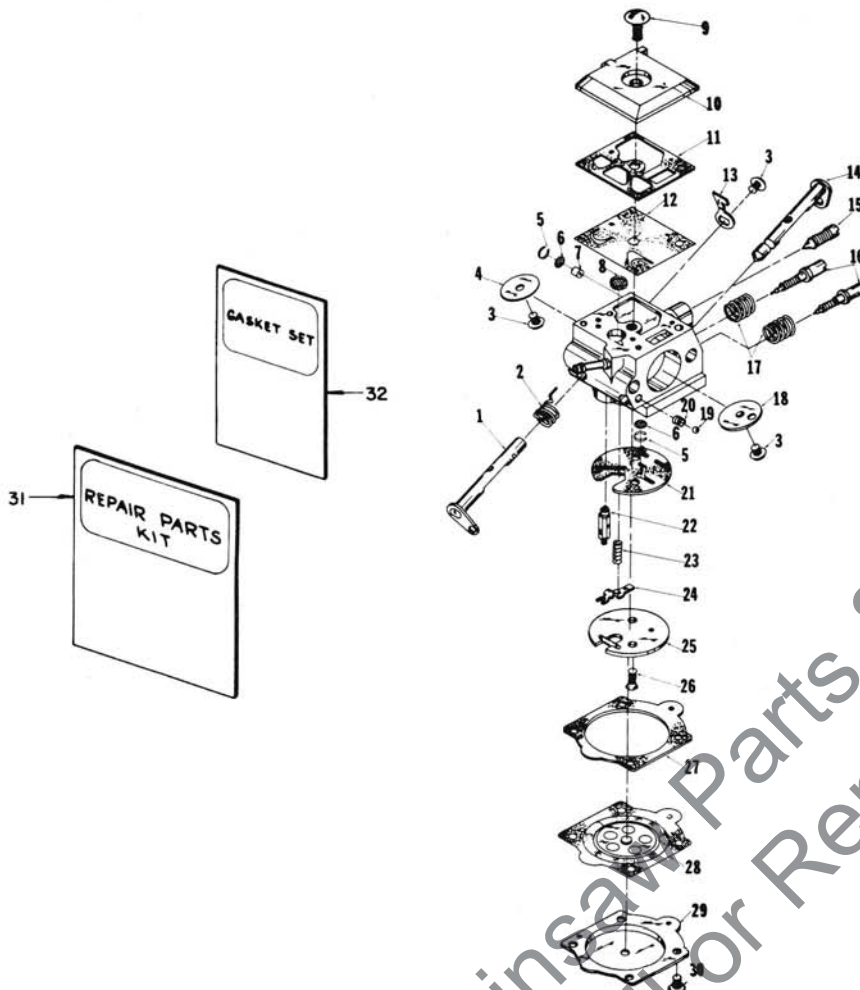


FIGURE 4

No.	Description	Part No.	EZ	XL Mini	XL Mini Automatic	No.	Description	Part No.	EZ	XL Mini	XL Mini Automatic	Qty.
1	CAP-fuel filler Includes: VALVE-check (not shown)	A-65283-A 63718	x	x	x	23	PUMP-automatic oil Includes:	A-65212	x			1
2	GASKET-cap fuel filler	58957	x	x		24	SCREW-pan, 4-40 x 1/4	80919	x			2
3	CAP-oil filler (vented) Includes: VALVE-check (not shown)	A-65284-A 63718	x	x	x	25	"O" RING	59074	x			2
4	"O" RING	65133	x	x		26	BALL	65225	x			1
5	KIT-spiked bumper(std. on Mini Models ONLY) Includes:	A-65181	x	x		27	GASKET-check valve	65144	x			1
6	WASHER-lock #10	83006-1	x	x		28	CAP-check valve	A-68207	x			1
7	NUT-hex, 10-32	81010-1	x	x		29	Includes: SPRING-check valve	65017	x			1
8	SCREW-flat, 10-32 x 5/8	80035	x	x		30	GASKET	65145	x			1
9	HANDLE BAR HANDLE BAR (EZ Auto ONLY) HANDLE BAR (XL Mini Auto ONLY) HANDLE BAR-full wrap-around	A-65163-2 A-65161-1 A-65165-1 A-68469-2	x		x	31	SCREW-cam	65136	x			1
10	SCREW-socket, 10-32 x 7/8	82169	x	x		32	SEAL	65142	x			1
11	BRACKET-handle bar	65035-3	x	x		33	SCREW-pan, 8-32 x 3/4	80567	x			3
12	SCREW-shoulder	64613-A	x	x		34	WORM-oil pump	65047-A	x			1
13	GROMMET-handle bar	64473	x	x		35	PLATE-guide bar (inner)	63638-B	x	x		1
14	MOUNT-shock	65111	x	x		36	PLATE-guide bar (outer)	63639-A	x	x		1
15	PLATE-handle bar bracket	65032	x	x		37	WASHER-thrust (outer)	65064	x	x		1
16	PLATE-handle bar	65670	x	x		38	RACE-inner	65746	x	x		1
17	PAD-rubber	65124	x	x		39	BEARING-needle	64124	x	x		1
18	GROMMET	65122	x	x		40	SPROCKET & DRUM	A-65033	x	x		1
19	SCREW-shoulder	65121	x	x		41	WASHER-thrust (inner)	65024-1	x	x		1
20	SCREW-guide bar adjusting	65175-A	x	x		42	SHOE-clutch	65892	x	x		3
21	PIN-bar adjusting	65112-1	x	x		43	SPRING-clutch	65217	x	x		3
22	NUT-flexlock, 10-32	81109-2	x	x		44	PLATE-clutch (aluminum) PLATE-clutch (steel)	65146-1 67855-1	x †	x †		1
						45	COVER-drivecase COVER-drivecase	65071-7 65131-1	x x			1
						46	NUT-hex, 5/16-18	81196	x	x		2
						47	RACE-inner	65985	†	†		1
						48	SPROCKET-rim (3/8 TT)	OM-68210	†	†		1
						49	HUB & DRUM	A-65987	†	†		1
						50	WASHER-thrust (inner)	58833-1	†	†		1

† Optional



A-68415 HDC-4

HDC-4
Supersedes
HDC-1
&
HDC-2

No.	Description	Part No.	Qty.	No.	Description	Part No.	Qty.
1	SHAFT-throttle	67362	1	18	VALVE-choke	67365	1
† 2	SPRING-throttle return	67376	1	† 19	BALL-choke friction	60051	1
† 3	SCREW-valve	67372	3	† 20	SPRING-choke friction	64238	1
4	VALVE-throttle	67363	1	‡ 21	GASKET-circuit	67367	1
† 5	RING-screen retaining	67360	2	† 22	VALVE-inlet needle	64229	1
† 6	SCREEN-check valve	67381	2	† 23	SPRING-metering lever	67378	1
7	JET-limiting	68461	1	† 24	LEVER-metering	67383	1
† 8	SCREEN-fuel inlet	64243	1	25	PLATE-circuit	67382	1
9	SCREW-fuel pump	67374	1	26	SCREW-circuit plate	67375	2
10	COVER-fuel pump	67361	1	‡ 27	GASKET-metering diaphragm	64231	1
‡ 11	GASKET-fuel pump	67368	1	† 28	DIAPHRAGM-metering	67371	1
† 12	DIAPHRAGM-fuel pump	67370	1	29	COVER-metering diaphragm	64224	1
13	STOP-throttle	67366	1	30	SCREW-metering cover	64689	4
14	SHAFT-choke	67364	1	31	REPAIR KIT	67384	1
15	SCREW-idle adjustment	67373	1	† 32	GASKET SET	67369	1
† 16	NEEDLE-idle adjustment	67379	2		REPAIR KIT	65386	1
† 17	SPRING-needle adjusting	67377	2				

† Indicates contents of Repair Kit #67384

‡ Indicates contents of Gasket Set

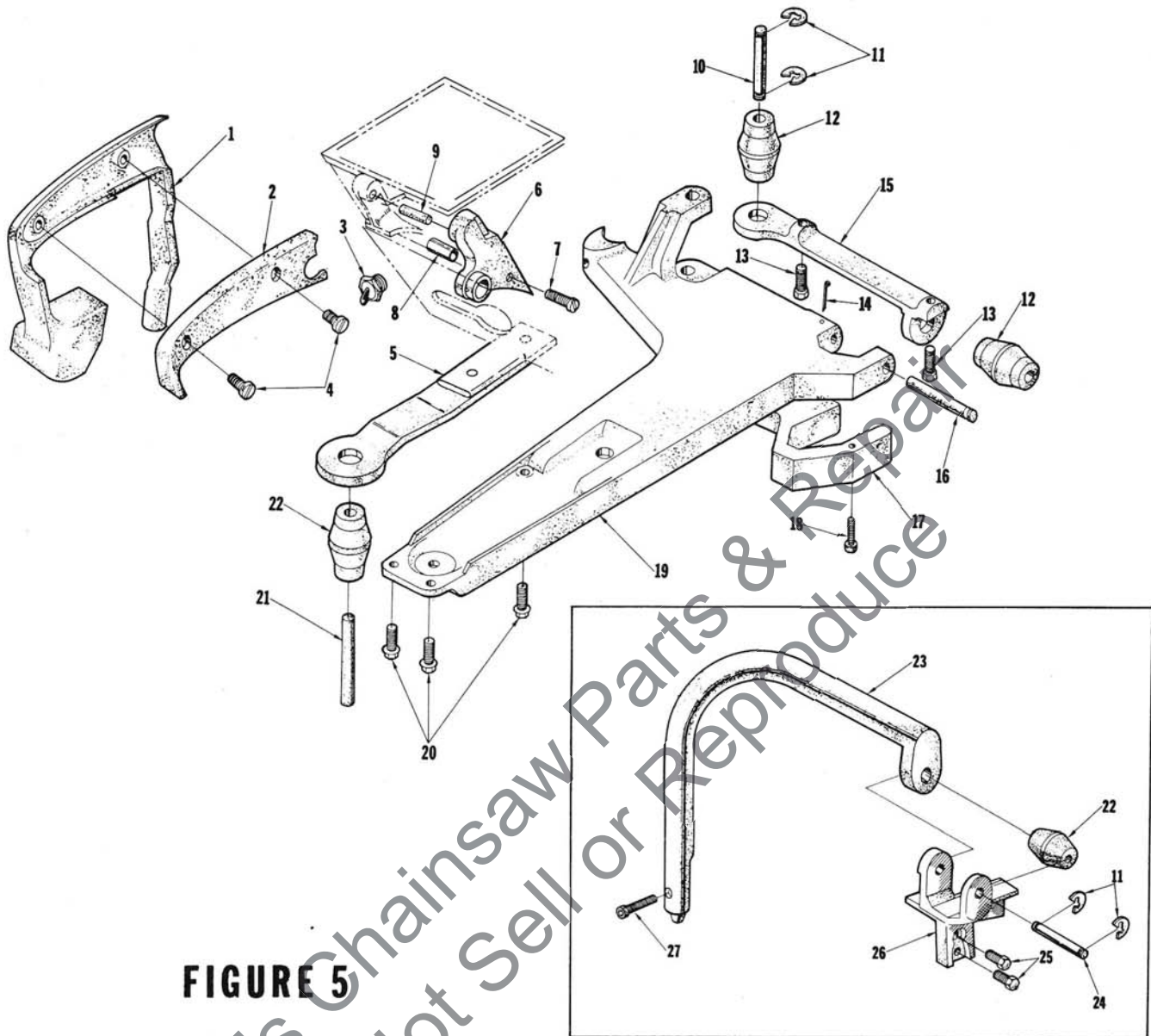


FIGURE 5

No.	Description	Part No.	Qty.	No.	Description	Part No.	Qty.
1	HANDLE-vibration mount base	67775-2	1	14	PIN-cotter	86317	1
2	COVER-vibration mount base handle	67786-1	1	15	BRACKET-vibration mount	67780-2	1
3	SWITCH-toggle	A-67817	1	16	PIN-retaining	67782	1
4	SCREW-8-32 x 1/2 pan hd. Spinlock	80560	2	17	SKID	68740-2	1
5	CHAMBER-carburetor (w/connector)	A-68761	1	18	SCREW-fil hd. cap, 6-32 x 5/8	80461-1	4
6	RETAINER-throttle trigger	A-68028	1	19	BASE-vibration mount	67774-2	1
	Includes:			20	SCREW-12-24 x 5/8 Spinlock	80676	3
7	SCREW-fil hd., 6-32 x 1-1/4	82190	1	21	PIN-retaining	67784	1
8	SPACER	68436	1	22	MOUNT-vibration isolator	67868	2
	BUSHING- (not shown)	67752	1	23	HANDLE BAR	A-67889-1	1
9	PIN	67924	1	24	PIN-retaining	67785	1
10	PIN-retaining	67783	1	25	SCREW-10-32 x 5/8 Spinlock	80704	2
11	"E" RING	67857	4	26	BRACKET-handle bar	67776-2	1
12	MOUNT-vibration isolator	67974	2	27	SCREW-soc. hd. cap, 1/4-20 x 1-1/8	80954	1
13	SCREW-10-32 x 3/4 Spinlock	80583	2				

Accessories

24352	COMPOUND-sealing (Duxseal)
A-24276	GUIDE BAR PLATE SET
A-24338	KIT-fasteners
A-24336	KIT-filter
A-67947	KIT-heat exchanger
A-24337-A	KIT-ignition (Phelon) units below S/N 91600198
A-24365-A	KIT-ignition (Phelon) units above S/N 91600198
A-24481	KIT-ignition (Wico)
68119	LABEL-chain (Oregon)
23488-B	LOCTITE-10cc tube
68848	ROPE-starter size #4 (250 ft.reel)
A-65256	SPARK ARRESTOR
A-24335-A	STARTING ROPE KIT

Tools

24299	ANVIL-crankshaft installation
24320	BIT-#3 pozidriv
24295	COLLAR-bearing installation
A-24309	JACKSCREW
24298	PLUG-bearing and seal installation
24292	PLUG-bearing and seal removal
24294	PLUG-needle and shaft installation
A-24290	PULLER-magneto rotor
24301	Includes: SCREW-rotor remover - 4
67912	RING-retaining 4
23136-1	SLEEVE-bearing and shaft installation
24300	SLEEVE-crankshaft bearing installation
24297	SLEEVE-seal protecting (crankcase)
24291	SLEEVE-seal protecting
A-24060	WRENCH-spanner (clutch)
64309	Includes: PIN-dowel - 3
A-24284	WRENCH-combination

Paint

24101	SPRAY CAN-blue	24453	SPRAY CAN-#70" blue	23475	SPRAY CAN-red
-------	----------------	-------	---------------------	-------	---------------

Notes

Note 1 - Units below S/N 91952093 must use 65061 Rotor and A-65204 Coil & Core.

Note 2 - A-65203-A Points must be used with A-65210-A Cover-breaker box.

Note 3 - One (1) piece Fuel Line A-68053 supersedes three (3) piece Fuel Line in older units.

Note 4 - Units below S/N 91600198 use 65208 Condenser.

Note 5 - For units with Reed Type Muffler the following are still available: STOP-67413-1A, STUDS-68103-1, BAFFLE-67736, REED-67394, and NUTS-81109-2.

Note 6 - For units without rubber grips use *65042-3B Cover.

Note 7 - Units below S/N 93182173 use A-67802 Kit-throttle adjustment stop.

Note 8 - Units below S/N 93182173 use 64646 Bushing unless A-67802 Kit has been used.

Note 9 - Older units with 3 piece Fuel Line use 58348 Boot.

Note 10- Units below S/N 01260449 use Grommets 65091 (Hi-Lo) and 65090 (Idle).

Note 11 - HDC-4 replaces HDC-1 and HDC-2.

* Denotes new parts

EZ

EZ Automatic

XL Mini

XL Mini Automatic

FP

Part No.	Description	Qty.	Part No.	Description	Qty.	Part No.	Description	Qty.	Part No.	Description	Qty.
23136-1	Sleeve	1	65024-1	Washer-inner	1	65188	Spring-throttle stop	1	67893	Shield-pulley	1
23475	Spray Can-red	1	65025	Bolt-guide bar	2	65189	Screen-air	1	67924	Pin	1
23488-B	Kit-Loctite	1	65031-1	Trigger	1	65193	Piston Ring	1	A-67947	Kit-exchanger	1
A-24060	Wrench-spanner	1	65032	Plate	1	A-65196-A	Piston & Pin	1	67974	Mount	2
24101	Spray Can-blue	1	A-65033	Sprocket & Drum	1	A-65197-A	Piston & Pin	1	A-68028	Retainer	1
A-24276	Guide Bar Plate Set	1	65035-3	Bracket	1	A-65198	Terminal	1	68046	Grommet	1
A-24284	Wrench	1	A-65036-1	Cylinder-1-1/2	1	A-65200	Drivecase	1	A-68053	Line-fuel	1
A-24290	Puller-rotor	1	65037-2	Tank-fuel & oil	1	A-65201	Drivecase	1	A-68061-A	Plunger	1
24291	Sleeve-seal	1	65038-2	Cover	1	A-65202	Crankcase	1	68196	Grommet	1
24292	Plug-seal	1	*65042-3B	Cover	1	A-65203-A	Points-breaker	1	68197	Grommet	1
24294	Plug	1	65044-S	Bearing-ball	1	65205	Lead-hi tension	1	A-68207	Cap-check valve	1
24295	Collar-bearing	1	65045	Ring-retaining	1	65206-A	Box-breaker	1	OM68210	Sprocket	1
24297	Sleeve-seal	1	65046	Gasket-fuel tank	1	65207	Nut-hex	1	68253-1	Cap-muffler	1
24298	Plug-bearing	1	65047-A	Worm-oil pump	1	65209	Seal-felt	1	A-68254	Muffler	1
24299	Anvil	1	65056	Rod-throttle	1	A-65210-A	Cover-bkr. box	1	68255	Core-coil	1
24300	Sleeve-crankshaft	1	65064	Washer-outer	1	65211	Seal-felt	1	68256	Coil-ignition	1
24301	Screw	4	65066-1	Cap-muffler	1	A-65212	Pump-auto oil	1	68257	Retainer-coil	1
A-24309	Jackscrew	1	65067	Baffle-muffler	1	A-65213	Rod-connecting	1	A-68267-A	Handle-throttle	1
24320	Bit-#3	1	65071-1	Cover-drivecase	1	A-65214	Line-oil	1	A-68415	Carburetor	1
A-24335-A	Kit-starting rope	1	65072-1	Rod-choke	1	65217	Spring-clutch	3	68431-1	Cap-muffler	1
A-24336	Kit-filter	1	A-65076	Valve-check	1	A-65222-1	Housing-starter	1	A-68433-1	Body-muffler	1
A-24337-A	Kit-ignition	1	A-65077	Valve-check	1	65225	Ball	1	68436	Spacer	1
A-24338	Kit-fasteners	1	65082	Nut-plunger	1	A-65256	Spark Arrestor	1	68461	Jet-limiting	1
24352	Compound-sealing	1	65084	Button-oil pump	1	65260	"O" Ring	1	A-68491	Muffler-can type	1
A-24365-A	Kit-ignition	1	65085	Grommet-oil line	1	65261	Ring-retaining	2	68700	Screw-hex	1
24453	Spray Can-70 blue	1	65092	Plate-lever	1	A-65272	Nut	1	68701	Rotor-magneto	1
A-24481	Kit-ignition	1	65093	Clamp-lever	1	A-65275	Muffler	1	A-68704	Cover-bkr. box	1
28008	Lock-breaker arm	1	65095-2	Cover-starter	1	A-65283-A	Cap-fuel	1	68705	Seal-felt	1
28028	Washer-thrust as req'd	1	65096-5	Cover-air filter	1	A-65284-A	Cap-oil	1	68708	Box-breaker	1
55871	Stud	4	65102	Lock-spring	1	65286	Condenser	1	A-68710	Points-breaker	1
58319-A	Ring-retaining	1	65107	Spring-rewind	1	65288	Rotor-magneto	1	68711	Condenser	1
58340-B	Line-oil pickup	1	65108	Pawl-starter	2	65291	Lead-primary	1	68712	Lead Group	1
58406	"O" Ring	1	65109	Stud-pawl	2	65292	Screw	6	68715	Screw	2
58833-1	Washer-thrust	1	65110	Washer-pawl	1	65286	Kit-repair	1	68716	Core & Coil	1
58957	Gasket-cap	1	65111	Mount-shock	1	65670	Plate-handle bar	2	68740-2	Skid	1
A-59009	Filter	1	65112-1	Pin-guide bar	1	65745	Race-inner	1	68759	Grip	1
59074	"O" Ring	4	65113	Shield-inner	1	65892	Shoe-clutch	3	A-68761	Chamber-carb.	1
59704	Screw-retaining	2	65114	Shield-outer	1	65985	Race-inner	1	68770	Grip	1
60051	Ball-choke friction	1	65115-2	Cover	1	A-65987	Hub & Drum	1	68773	Seal-felt	1
63290	Washer-felt	1	65116	Bushing-cap	1	67191	Stud-drive #2	3	68774	Gasket	1
63605	Line	1	65118	Rope-starter	1	67360	Ring-screen	2	68837	Insert	1
63638-B	Plate-inner	1	65120	Spring-pawl	2	67361	Cover-fuel pump	1	68848	Reel-250'	1
63639-A	Plate-outer	1	65121	Screw-shoulder	2	67362	Shaft-throttle	1	68852-2	Cover	1
63718	Valve-check	2	65122	Grommet	2	67363	Valve-throttle	1	72084-A1	Nut-hex	1
63905	Washer-lock	2	A-65123	Bracket	1	67364	Shaft-choke	1	FASTENING PARTS		
63910	Plate-"on-off"	1	65124	Pad-rubber	2	67365	Valve-choke	1	80035	10-32 x 5/8	2
A-63920	Filter-fuel	1	65125	Ring-retaining	1	67366	Stop-throttle	1	80461-1	6-32 x 5/8	4
A-63938	Switch	1	65126	Key-woodruff	1	67367	Gasket-circuit	1	80560	8-32 x 1/2	4
A-63939	Lead-ground	1	65127	"O" Ring	1	67368	Gasket-fuel pump	1	80567	8-32 x 3/4	3
64021	Screw-coil & core	2	65130-S	Spark Plug	1	67369	Gasket Set	1	80571	6-32 x 3/8	4
64083-1	Filter-fuel	1	65131-1	Cover-drivecase	1	67370	Diaphragm	1	80577	8-32 x 3/8	4
64124	Bearing-needle	1	65133	"O" Ring	1	67371	Diaphragm	1	80583	10-32 x 3/4	2
64133-A	Screw-shoulder	2	65135	Grommet	1	67372	Screw-valve	3	80630	6-32 x 1/2	1
64182	Washer	1	65136	Screw-cam	1	67373	Screw-idle adj.	1	80676	12-24 x 5/8	9
64224	Cover-diaphragm	1	65137	Line-oil	2	67374	Screw	1	80704	10-32 x 5/8	6
64229	Valve-needle	1	65138	Fitting-oil line	1	67375	Screw	2	80805	8-32 x 9/16	2
64231	Gasket	1	65142	Seal-oil pump	1	67376	Spring-throttle return	1	80870	10-32 x 3/8	5
64238	Spring	1	65144	Gasket-check valve	1	67377	Spring-needle adj.	2	80919	4-40 x 1/4	2
64243	Screen-fuel inlet	1	65145	Gasket-cam screw	1	67378	Spring-lever	1	80954	1/4-20 x 1-1/8	1
64309	Pin-dowel	3	65146-1	Plate-clutch	1	67379	Needle-idle adj.	2	81010-1	Nut-10-32	2
64349-A	Screw-shoulder	3	65147-A	Stop-throttle adj.	1	67381	Screen-check valve	2	81065-2	Nut-1/4-28	4
64473	Grommet	2	A-65152-2	Body-muffler	1	67382	Plate-circuit	1	81109-2	Nut-10-32	2
64613-A	Screw-shoulder	2	65153	Pin-dowel	1	67383	Lever-metering	1	81112	Nut-5/16-24	1
64677	Spring-throttle lock	1	A-65154-1A	Manifold-intake	1	67384	Kit-repair	1	81126	Nut-6-32	1
64689	Screw Assembly	4	65157	Screw-retainer	1	67628	Screw-6-32 x 7/16	1	81196	Nut-5/16-18	2
64813	Ring-retaining	2	A-65161-1	Handle Bar	1	67634	Boot-throttle rod	1	82146	8-32 x 5/8	9
64862	Grommet-choke	1	A-65163-2	Handle Bar	1	67752	Bushing	1	82151	8-32 x 5/16	1
65003	Piston Ring	2	A-65165-1	Handle Bar	1	67774-2	Base	1	82165	10-32 x 1-5/8	2
65006-1	Crankshaft	1	A-65170	Pulley & Cup	1	67775-2	Handle	1	82169	10-32 x 7/8	1
65006-2	Crankshaft	1	65171-A	Pin-throttle latch	1	67776-2	Bracket	1	82187	8-32 x 1-7/16	1
65007	Bearing-needle	1	A-65172	Filter-oil	1	67780-2	Bracket	1	82190	6-32 x 1-1/4	1
A-65009	Bearing-needle	1	65173	Lever-release	1	67782	Pin-retaining	1	82198	6-40 x 1	1
65010	Seat-reed valve	1	65174	Spring-valve	1	67783	Pin-retaining	1	83004-1	Washer-#6	1
65011-A	Retainer	1	65175-A	Screw-guide bar	1	67784	Pin-retaining	1	83006-1	Washer-#10	2
65012-A	Reed-valve	4	A-65178	Filter Element	1	67785	Pin-retaining	1	83046	Washer-#10	2
65014	Gasket	1	65179	Bearing-roller	1	67786-1	Cover	1	84065-1	Washer-5/16	1
65016	Gasket-carb.	1	A-65180-1	Cylinder-1-7/16	1	A-67817	Switch-toggle	1	86301	Pin-cotter	1
65017	Spring-check valve	1	A-65181	Kit-bumper	1	67855-1	Plate-clutch	1	86317	Pin-cotter	1
65018	Gasket-cylinder	1	65183	Grip-starter rope	1	67857	"E" Ring	4	86324	Pin-cotter	1
65019	Seal	2	A-65184	Valve-release	1	67868	Mount	2			
65023	Post-spring	1	65185	Bushing-rope	1	A-67889-1	Handle Bar	1			

* Denotes new parts

ALWAYS FURNISH MODEL AND SERIAL NUMBER WHEN ORDERING PARTS.

Leon's Chainsaw Parts & Repair
Do Not Sell or Reproduce



Textron
DIVISION
PORT CHESTER, N.Y. U.S.A.