

PRICE.25

# PARTS LIST

4-69

# HOMELITE®

E-Z  
&  
E-Z AUTOMATIC

Leot's Chair Saw Parts & Repair  
Do Not Sell Or Reproduce / OF 2

# E-Z And E-Z Automatic

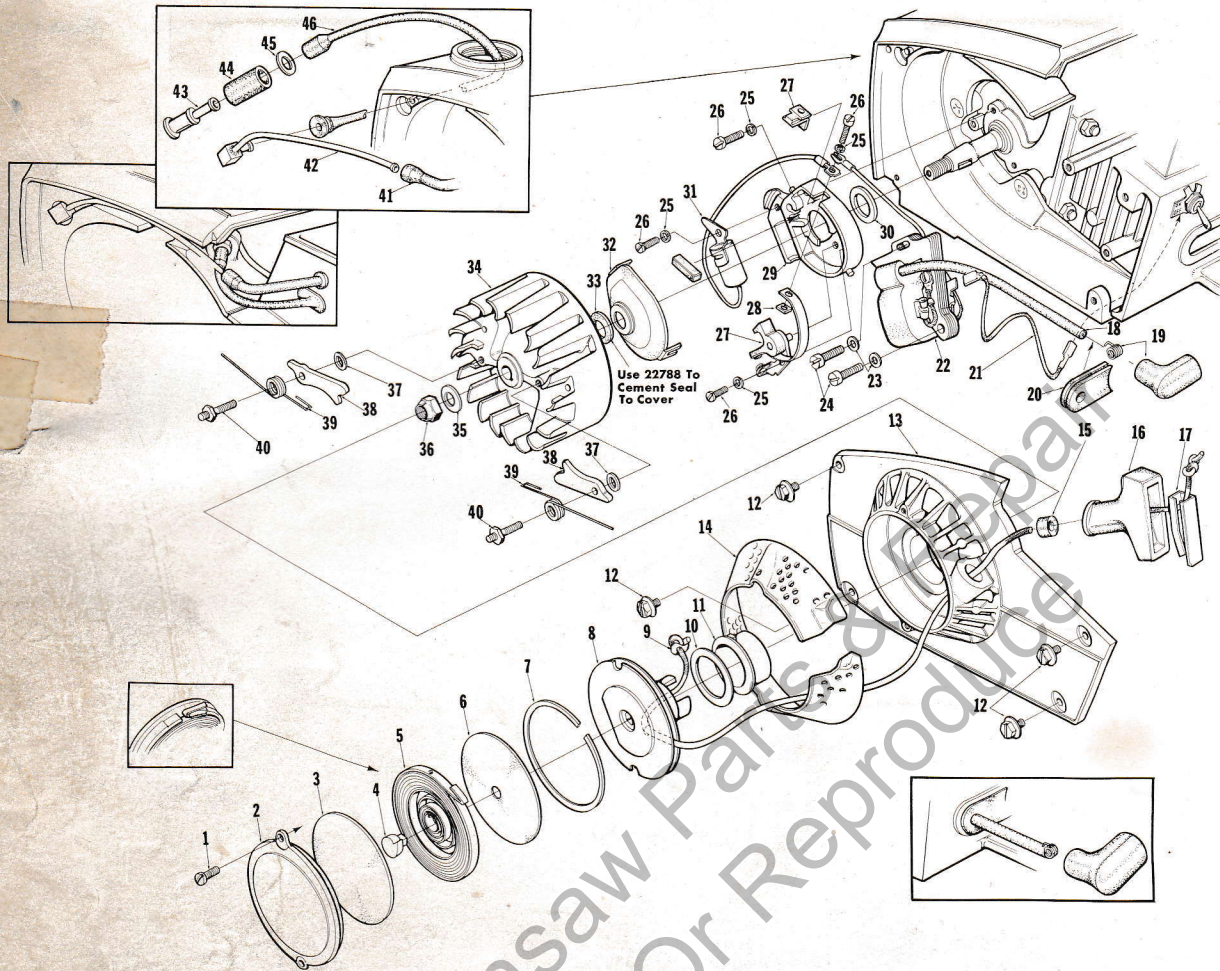


FIGURE 1

PHELOM MAG.  
SERV. MEMO 432 FOR CHANGES

No.	Description	Part No.	Qty.	No.	Description	Part No.	Qty.
1	SCREW - pan, 8-32 x 3/8	80577	2	23	WASHER - flat, #8	84025-1	2
*2	COVER - starter	65095-2	1	*24	SCREW - fil., 8-32 x 3/4	82181	2
*3	SHIELD - spring (inner)	65113	1	25	WASHER - lock, #6	83004	4
*4	LOCK - spring	65102	1	*26	SCREW - fil., 6-32 x 7/16	80015	4
*5	SPRING - rewind	65107	1	*27	POINTS - breaker	A-65203	1
*6	SHIELD - spring (outer)	65114	1	*28	NUT - square	65207	1
*7	RING - retaining	65125	1	*29	BOX - breaker	65206	1
*8	PULLEY & CUP ASSY.	A-65170	1	*30	SEAL - felt	65209	1
*9	ROPE - starter	65118	1	*31	CONDENSER	65208	1
*10	SHIELD - pulley	65103	1	*32	COVER - breaker box	A-65210	1
*11	BUSHING - starter cup	65116	1	*33	Includes: SEAL - felt	65211	1
*12	SCREW - hex, 10-32 x 5/8	80704	4	*34	ROTOR - magneto	65061	1
*13	HOUSING - rewind starter	A-65222-1	1	35	WASHER - flat, 5/16	84065-1	1
*14	Includes: SCREEN - air inlet	65189	1	36	NUT - hex, 5/16-24	81112	1
*15	BUSHING - starter rope	65185	1	*37	WASHER - starter pawl	65110	2
*	STUD - drive, #2 (not shown)	67191	3	*38	PAWL - starter	65108	2
*16	GRIP - starter rope	65183	1	*39	SPRING - starter pawl	65120	2
*17	INSERT - rope retaining	65218	1	*40	STUD - starter pawl	65109	2
*18	LEAD - hi-tension	65205	1	*41	LINE - fuel	65168	1
*19	TERMINAL - spark plug	A-65198	1	*42	LINE - fuel <i>USE A-65227</i>	65167	1
*20	GROMMET - hi-tension lead	65135	1	43	FILTER - fuel	A-63920	1
*21	LEAD - ground	A-63939	1	44	Includes: FILTER - felt	64083-1	1
*22	CORE & COIL	A-65204	1	45	WASHER	64182	1
				*46	LINE - fuel	65169	1

\*Denotes new parts

# E-Z And E-Z Automatic

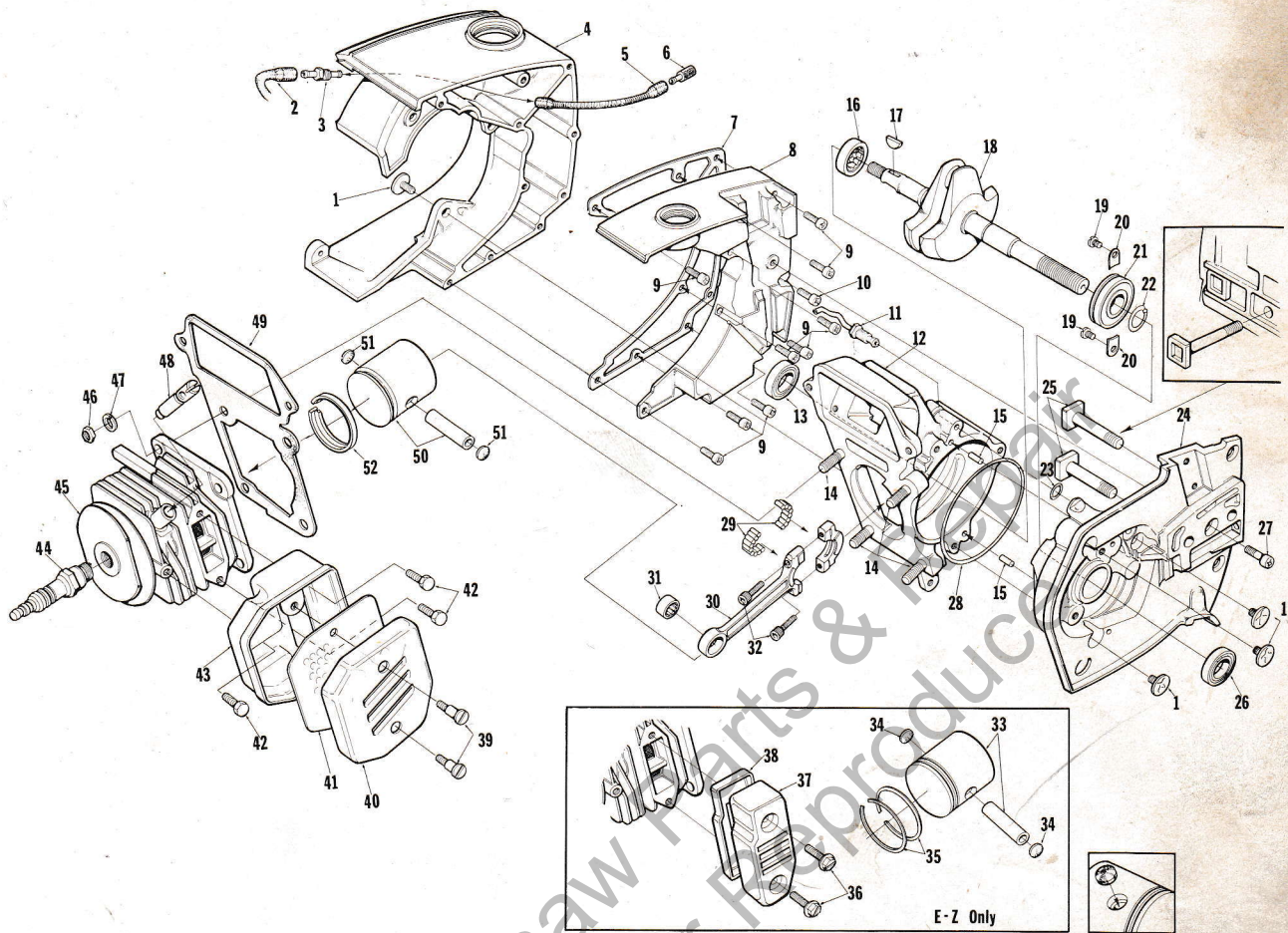


FIGURE 2

No.	Description	Part No.	E-Z	E-Z Auto	Qty.	No.	Description	Part No.	E-Z	E-Z Auto	Qty.
- 1	SCREW - retaining	65321	x	x	6	+ *27	SCREW - fil., drivecase retainer	65157	x	x	1
- *2	LINE - oil	65137	x	x	1	- *28	"O" RING	65127	x	x	1
+ *3	FITTING - oil line	65138	x	x	1	+ *29	BEARING - needle (set of 28)	A-65009	x	x	1
*4	TANK - fuel and oil	65037-2	x	x	1	*30	ROD - connecting	A-65213	x	x	1
- 5	LINE - oil (pickup)	58340-B	x	x	1	+ *31	Includes: BEARING - needle	65007	x	x	1
*6	FILTER - oil	A-65172	x	x	1	*32	SCREW - socket, 8-32 x 1/2	80541	x	x	2
+ *7	GASKET - fuel and oil tank	65046	x	x	1	+ *33	PISTON & PIN - (1 7/16" dia.)	A-65196-A	x		1
*8	COVER - fuel and oil tank	65115-2		x	1	*34	Includes: PLUG - piston pin	65039	x		2
*	COVER - fuel and oil tank	65038-2	x		1	- *35	PISTON RING	65003	x		2
- 9	SCREW - fil., 8-32 x 5/8	82146	x	x	9	- *36	SCREW - hex, 10-32 x 1 3/8	82162	x		2
- 10	SCREW - fil., 8-32 x 15/16	82151	x		1	- *37	BODY - muffler	65059	x		1
-	SCREW - fil., 8-32 x 1 1/4	82152		x	1	- *38	BASE - muffler	65058	x		1
- *11	LINE - oil	A-65214	x	x	1	- *39	SCREW - shoulder	64133-A		x	2
*12	CRANKCASE	A-65202	x	x	1	- *40	CAP - muffler	65066-1		x	1
- *13	Includes: SEAL	65019	x	x	1	- *41	BAFFLE - muffler	65067		x	1
- 14	STUD - cylinder	55871	x	x	4	- 42	SCREW - hex, 10-32 x 3/8	80870		x	3
- *15	PIN - dowel	65153	x	x	2	- *43	BODY - muffler	A-65152-1		x	1
- *16	BEARING - roller	65179	x	x	1	- *44	SPARK PLUG	65130-S	x	x	1
- *17	KEY - woodruff	65126	x	x	1	- *45	CYLINDER - (1 7/16" dia.)	A-65180-1	x		1
- *18	CRANKSHAFT	65006-1	x		1	- *	CYLINDER - (1 1/2" dia.)	A-65036-1		x	1
*	CRANKSHAFT	65006-2		x	1	46	NUT - hex, 1/4-28	81065-2	x	x	4
- 19	SCREW - bearing retaining	59704	x	x	2	47	WASHER - lock, 1/4	83009	x	x	4
- 20	WASHER - lock, special	63905	x	x	2	*48	VALVE - compression release	A-65184	x	x	1
- *21	BEARING - ball	65044-S	x	x	1	*49	GASKET - cylinder	65018	x	x	1
+ *22	RING - retaining	65045	x	x	1	- *50	PISTON & PIN - (1 1/2" dia.)	A-65197-A		x	1
- 23	"O" RING	90872	x	x	1	- *51	Includes: PLUG - piston pin	65040		x	2
- *24	DRIVECASE	A-65201	x		1	- *52	PISTON RING - "L" Shaped	65193		x	1
- *	DRIVECASE	A-65200		x	1						
- *25	Includes: BOLT - guide bar	65025	x	x	1						
- *26	SEAL	65019	x	x	1						

\*Denotes new parts

# E-Z And E-Z Automatic

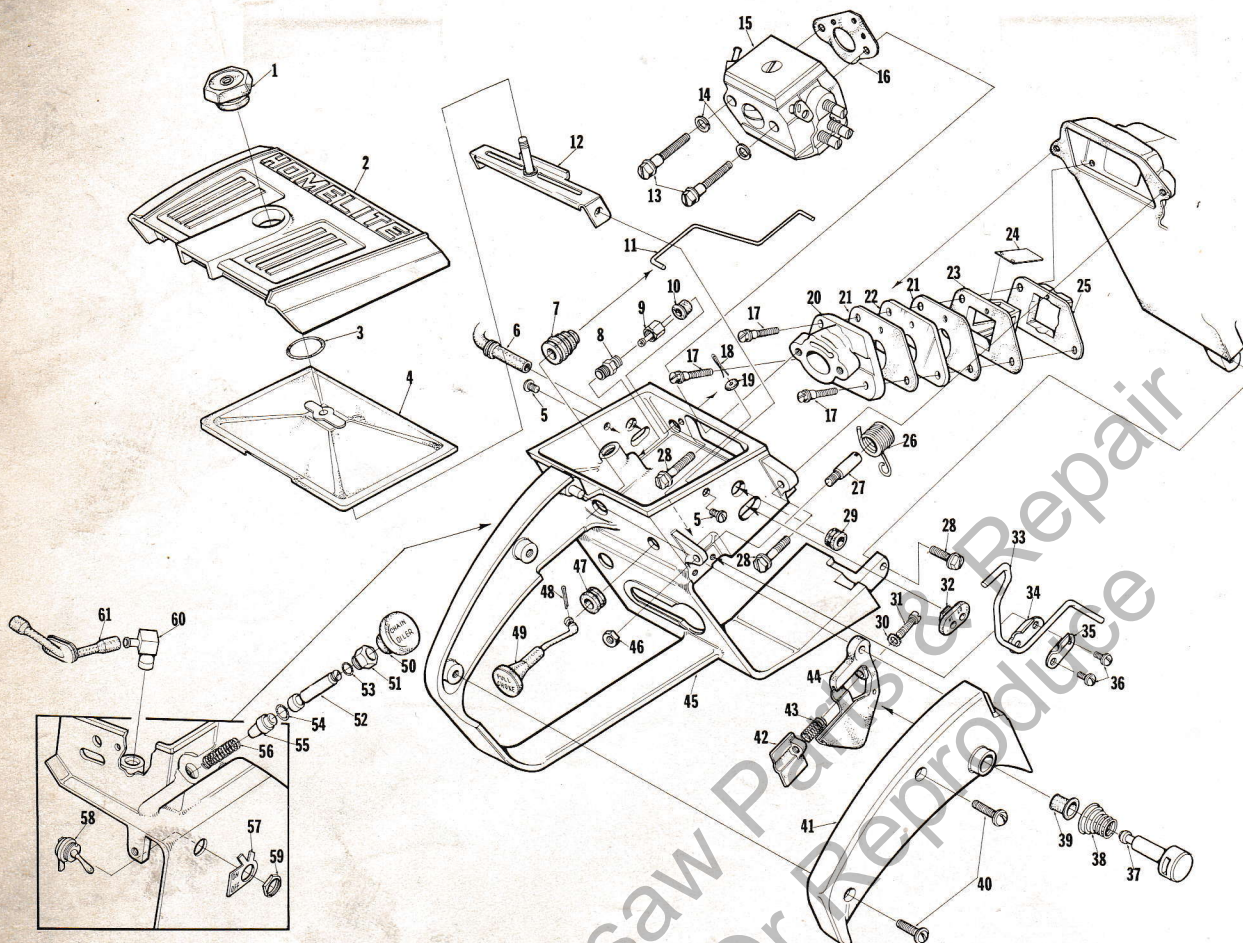


FIGURE 3

No.	Description	Part No.	Qty.	No.	Description	Part No.	Qty.
*1	NUT - cover mounting	A-65055	1	*31	SCREW - fil., 6-40 x 1	82170	1
*2	COVER - air filter	65096-2	1	*32	GROMMET - "Hi - Lo"	65091	1
3	RING - retaining	58319-A	1	*33	LEVER - release	65173	1
*4	FILTER ELEMENT - air	A-65178	1	*34	PLATE - lever	65092	1
5	SCREW - pan, 8-32 x 3/8	80454	2	*35	CLAMP - lever	65093	1
*6	LINE - fuel	65168	1	36	SCREW - pan, 6-32 x 3/8	80571	2
7	BOOT - throttle rod	58348	1	*37	PIN - trigger latch	65171	1
*8	VALVE - check	A-65077	1	38	SPRING - throttle lock	64677	1
*9	LINE - oil	A-65214	1	39	BUSHING	59064	1
*10	GROMMET - oil line	65085	1	40	SCREW - pan, 8-32 x 1/2	80560	2
*11	ROD - throttle	65056	1	*41	COVER - throttle handle	65042-3	1
*12	BRACKET - air filter cover	A-65123	1	*42	STOP - throttle adjustment	65147	1
*13	SCREW - hex, 10-32 x 5/8	82165	2	*43	SPRING - throttle stop	65188	1
14	WASHER - lock, #10	83046	2	*44	TRIGGER - throttle	65031	1
*15	CARBURETOR - E-Z Automatic Only	A-65015	1	*45	HANDLE - throttle	A-65215	1
*	CARBURETOR - E-Z Only	A-65223	1	46	NUT - hex, #6-32	81126	1
*16	GASKET - carburetor	65016	1	47	GROMMET	64862	1
17	SCREW - shoulder	64349-A	3	48	PIN - cotter	86324	1
18	PIN - cotter	86301	1	*49	ROD - choke	65072-1	1
19	WASHER - felt	63290	1	*50	BUTTON - oil pump	65084	1
*20	MANIFOLD - intake	65013-1	1	*51	NUT - plunger	65082	1
*21	GASKET - reed valve seat	65014	2	*52	ROD - plunger	A-65199	1
*22	SPACER - carburetor	65021	1	53	Includes: "O" RING	90872	1
*23	SEAT - reed valve	65010	1	54	"O" RING	58406	1
*24	REED - valve	65012	4	*55	PLUNGER - oil pump	65081	1
*25	RETAINER - reed valve	65011-1	1	*56	SPRING - plunger	65080	1
*26	SPRING - release valve	65174	1	57	PLATE - indicating "On-Off"	63910	1
*27	POST - spring	65023	1	58	SWITCH - grounding	A-63938	1
28	SCREW - hex, 10-24 x 5/8	80676	3	59	Includes: NUT - hex	72084-A1	1
*29	GROMMET - idle adjustment	65090	1	*60	VALVE - check (inlet)	A-65076	1
30	WASHER - #6	83024	1	*61	LINE - oil	65137	1

\*Denotes new parts

ALWAYS FURNISH SAW MODEL AND SERIAL NUMBER WHEN ORDERING PARTS.

# E-Z And E-Z Automatic

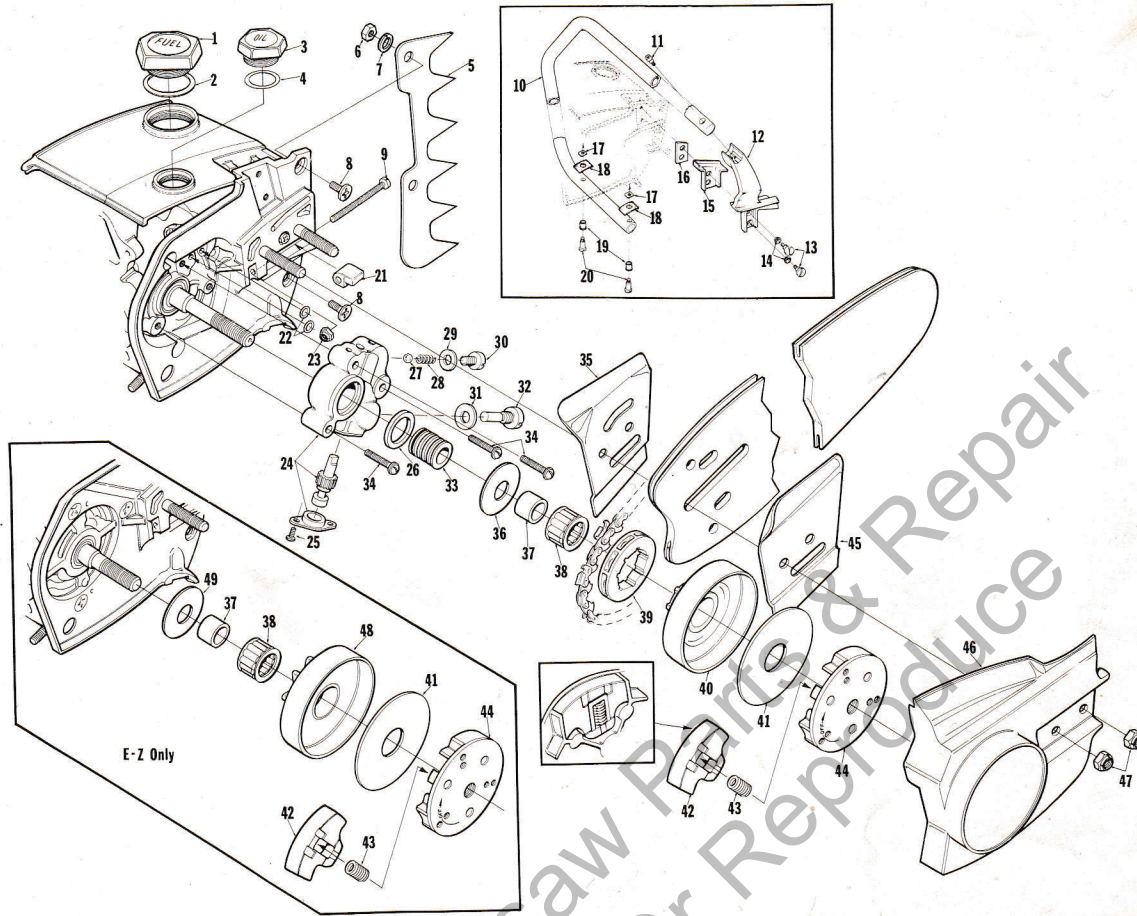


FIGURE 4

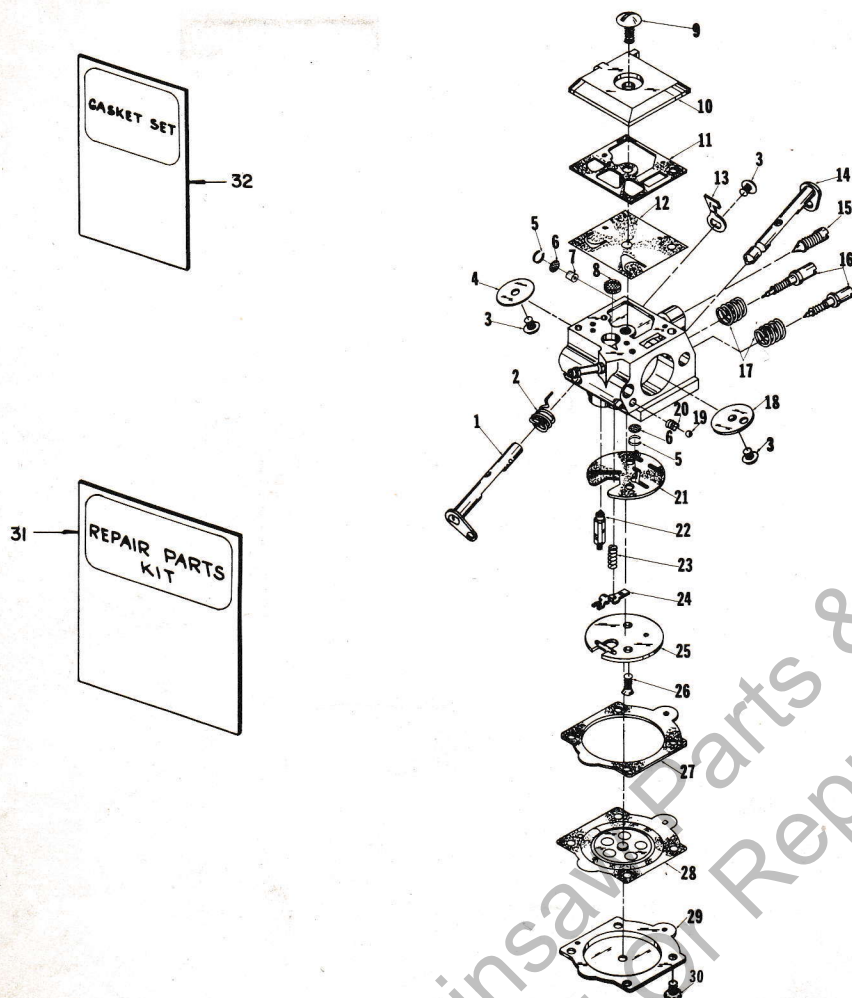
SERV-MEMO 504  
S TYPE CLUTCH



No.	Description	Part No.	E-Z	E-Z Auto	Qty.	No.	Description	Part No.	E-Z	E-Z Auto	Qty.
*1	CAP - fuel filler Includes: VALVE - check (not shown)	A-65052 63718	x	x	1	23	NUT - flexlock, 10-32	81109-2	x	x	1
2	GASKET - cap fuel filler	58957	x	x	1	*24	PUMP - automatic oil	A-65212	x	x	1
*3	CAP - oil filler (vented) Includes: VALVE - check (not shown)	A-65054 63718	x	x	1	25	Includes: SCREW - pan, 4-40 x 1/4	80919	x	x	2
*4	"O" RING	65133	x	x	1	*26	SEAL	65142	x	x	1
*5	KIT - spiked bumper	A-65181	/	/	1	27	BALL	25527	x	x	1
6	Includes: NUT - hex, 10-32	81010-1	/	/	2	*28	SPRING - check valve	65017	x	x	1
7	WASHER - lock, #10	83006-1	/	/	2	*29	GASKET - check valve	65144	x	x	1
8	SCREW - flat, 10-32 x 1/2	80031	/	/	2	*30	CAP - check valve	65143	x	x	1
+ 9	SCREW - guide bar adjusting	65175	x	x	1	*31	GASKET	65145	x	x	1
*10	HANDLE BAR - flush cut	A-65159-1	x	x	1	*32	SCREW - cam	65136	x	x	1
*11	HANDLE BAR - flush cut	A-65161-1	x	x	1	*33	WORM - oil pump	65047	x	x	1
*12	HANDLE BAR - flush cut (Export Only)	A-65163	/	/	1	34	SCREW - pan, 8-32 x 3/4	80567	x	x	3
*13	HANDLE BAR - flush cut (Export Only)	A-65165	/	/	1	35	PLATE - guide bar (inner)	63638-B	x	x	1
*14	SCREW - socket, 10-32 x 7/8	82169	x	x	1	*36	WASHER - thrust (outer)	65027	/	/	1
*15	BRACKET - handle bar	65035-3	x	x	1	37	RACE - inner	65746	x	x	1
*16	SCREW - shoulder	64613-A	x	x	2	38	BEARING - needle	64124	x	x	1
*17	GROMMET - handle bar	64473	x	x	2	39	SPROCKET - splined	OM68210	/	/	1
*18	MOUNT - shock	65111	x	x	1	40	HUB & DRUM	A-65987	/	/	1
*19	PLATE - handle bar bracket	65032	x	x	1	*41	WASHER - thrust (inner)	65024	/	/	1
*20	PAD - rubber	65124	x	x	2	*42	SHOE - clutch	65892	x	x	3
*21	PLATE - handle bar	65670	x	x	2	*43	SPRING - clutch	65217	x	x	3
*22	GROMMET	65122	x	x	2	*44	PLATE - clutch	65146-1	x	x	1
*23	SCREW - shoulder	65121	x	x	2	45	PLATE - guide bar (outer)	63639-A	x	x	1
*24	PIN - bar adjusting	65112-1	x	x	1	*46	COVER - drivecase	65071-1	x	x	1
25	"O" RING	90872	x	x	2	*	COVER - drivecase	65131-1	x	x	1
						47	NUT - hex, 5/16-18	81196	x	x	2
						*48	SPROCKET & DRUM	A-65033	x	/	1
						*49	WASHER - thrust (outer)	65064	x	/	1

\*Denotes new parts  
/Optional

# E-Z And E-Z Automatic



Walbro HDC-1 - A-65015  
HDC-2 - A-65223

No.	Part No.	Description	Qty.	No.	Part No.	Description	Qty.
*1	67362	SHAFT - throttle	1	*17	67377 †	SPRING - needle adjusting	2
*2	67376 †	SPRING - throttle return	1	*18	67365	VALVE - choke	1
*3	67372 †	SCREW - valve	3	19	60051 †	BALL - choke friction	1
*4	67363	VALVE - throttle	1	20	64238 †	SPRING - choke friction	1
*5	67360 †	RING - screen retaining	2	*21	67367 ‡	GASKET - circuit	1
*6	67381 †	SCREEN - check valve	2	22	64229 †	VALVE - inlet needle	1
*7	64690	JET - limiting (A-65015 only)	1	*23	67378 †	SPRING - metering lever	1
*	67487	JET - limiting (A-65223 only)	1	*24	67383 †	LEVER - metering	1
8	64243 †	SCREEN - fuel inlet	1	*25	67382	PLATE - circuit	1
*9	67374	SCREW - fuel pump cover	1	*26	67375	SCREW - circuit plate	2
*10	67361	COVER - fuel pump	1	27	64231 ‡	GASKET - metering diaphragm	1
*11	67368 ‡	GASKET - fuel pump	1	*28	67371 †	DIAPHRAGM - metering	1
*12	67370 †	DIAPHRAGM - fuel pump	1	29	64224	COVER - metering diaphragm	1
*13	67366	STOP - throttle	1	30	64689	SCREW - metering cover	4
*14	67364	SHAFT - choke	1	*31	67384	REPAIR KIT	1
*15	67373	SCREW - idle adjustment	1	*32	67369 †	GASKET SET	1
*16	67379 †	NEEDLE - idle adjustment	2	*	65386	REPAIR KIT - check valve	1

†Indicates contents of Repair Kit #67384

‡Indicates contents of Gasket Set

\*Denotes new parts

## TOOLS

*24299	ANVIL - crankshaft installation		23136-1	BODY - fixture	
*24300	SLEEVE - crankshaft bearing	*24320	BIT - #3 pozidriv	*24295	COLLAR - bearing
*24294	PLUG - needle bearing assembly	*A-24284	WRENCH - combination	*A-24309	JACKSCREW
*24292	PLUG - seal removal	*A-24290	BRACKET - rotor remover	*24291	SLEEVE - seal (drivecase)
*24298	PLUG - bearing and seal	A-24060	WRENCH - clutch (spanner)	*24297	SLEEVE - seal (crankcase)

## PAINT

24101	SPRAY CAN - Blue	23475	SPRAY CAN - Red
-------	------------------	-------	-----------------

ALWAYS FURNISH SAW MODEL AND SERIAL NUMBER WHEN ORDERING PARTS.

# Numerical Parts List - E-Z & E-Z Automatic

Part No.	Description	Qty.	Part No.	Description	Qty.	Part No.	Description	Qty.	Part No.	Description	Qty.
23136-1	Sleeve	1	*65023	Post	1	*65131-1	Cover	1	*65892	Shoe	3
23475	Paint-Red	1	*65024	Washer-Inner	1	*65133	"O" Ring	1	A-65987	Drum & Hub	1
A-24060	Wrench	1	*65025	Bolt	2	*65135	Grommet	1	*67191	Stud-#2	3
24101	Paint-Blue	1	*65027	Washer-Outer	1	*65136	Screw	1	*67360	Ring	2
*A-24284	Wrench	1	*65031	Trigger	1	*65137	Line	1	*67361	Cover	1
*A-24290	Puller	1	*65032	Plate	1	*65138	Fitting	1	*67362	Shaft	1
*24291	Sleeve	1	*A-65033	Sprocket	1	*65142	Seal	1	*67363	Valve	1
*24292	Plug	1	*65035-3	Bracket	1	*65143	Cap	1	*67364	Shaft	1
*24294	Plug	1	*A-65036-1	Cylinder	1	*65144	Gasket	1	*67365	Valve	1
*24295	Collar	1	*65037-2	Tank	1	*65145	Gasket	1	*67366	Stop	1
*24297	Sleeve	1	*65038-2	Cover	1	*65146-1	Plate	1	*67367	Gasket	1
*24298	Plug	1	*65039	Plug	2	*65147	Stop	1	*67368	Gasket	1
*24299	Anvil	1	*65040	Plug	2	*A-65152-1	Body	1	*67369	Gasket Set	1
*24300	Sleeve	1	*65042-3	Cover	1	*65153	Pin	2	*67370	Diaphragm	1
*A-24309	Jackscrew	1	*65044-S	Bearing	1	*65157	Screw	1	*67371	Diaphragm	1
*24320	Bit-#3	1	*65045	Ring	1	*A-65159-1	Handle Bar	1	*67372	Screw	3
25527	Ball	1	*65046	Gasket	1	*A-65161-1	Handle Bar	1	*67373	Screw	1
55871	Stud	4	*65047	Worm	1	*A-65163	Handle Bar	1	*67374	Screw	1
58319-A	Ring	1	*A-65052	Cap	1	*A-65165	Handle Bar	1	*67375	Screw	2
58340-B	Line	1	*A-65054	Cap	1	*65167	Line	1	*67376	Spring	1
58348	Boot	1	*A-65055	Nut	1	*65168	Line	1	*67377	Spring	2
58406	"O" Ring	1	*65056	Rod	1	*65169	Line	1	*67378	Spring	1
58957	Gasket	1	*65058	Base	1	*A-65170	Pulley & Cup	1	*67379	Needle	2
59064	Bushing	1	*65059	Body	1	*65171	Pin	1	*67381	Screen	2
59704	Screw	2	*65061	Rotor	1	*A-65172	Filter	1	*67382	Plate	1
60051	Ball	1	*65064	Washer-Outer	1	*65173	Lever	1	*67383	Lever	1
63290	Washer	1	*65066-1	Cap	1	*65174	Spring	1	*67384	Repair Kit	1
63638-A	Plate-Inner	1	*65067	Baffle	1	*65175	Screw	1	*67487	Jet	1
63639-A	Plate-Outer	1	*65071-1	Cover	1	*A-65178	Filter Element	1	OM-68210	Sprocket	1
63905	Washer	2	*65072-1	Rod-Choke	1	*65179	Bearing	1	72084-A1	Nut	1
63910	Plate	1	*A-65076	Valve-Inlet	1	*A-65180-1	Cylinder	1	FASTENING PARTS		
A-63920	Filter	1	*A-65077	Valve-Outlet	1	*A-65181	Kit-Bumper	1	*80015	6-32x7/16	4
A-63938	Switch	1	*65080	Spring	1	*65183	Grip	1	80031	10-32x1/2	2
A-63939	Lead	1	*65081	Plunger	1	*A-65184	Valve	1	80454	#8, 3/8	2
64083-1	Filter	1	*65082	Nut	1	*65185	Bushing	1	*80541	8-32x1/2	4
64124	Bearing	1	*65084	Button	1	*65188	Spring	1	80560	8-32x1/2	2
64133-A	Screw	2	*65085	Grommet	1	*65189	Screen	1	80567	8-32x3/4	3
64182	Washer	1	*65090	Grommet	1	*65193	Piston Ring	1	80571	6-32x3/8	2
64224	Cover	1	*65091	Grommet	1	*A-65196	Piston & Pin	1	80577	8-32x3/8	2
64229	Needle	1	*65092	Plate	1	*A-65197	Piston & Pin	1	80676	12-24x5/8	3
64231	Gasket	1	*65093	Clamp	1	*A-65198	Terminal	1	*80704	10-32x5/8	4
64238	Spring	1	*65095-2	Cover	1	*A-65199	Rod-Upper	1	80870	10-32x3/8	3
64243	Screen	1	*65096-2	Cover	1	*A-65200	Drivecase	1	80919	4-40x1/4	2
64349-A	Screw	3	*65102	Lock	1	*A-65201	Drivecase	1	81010-1	Nut-10-32	2
64473	Grommet	2	*65103	Shield	1	*A-65202	Crankcase	1	81065-2	Nut-1/4-28	4
64613-A	Screw	2	*65107	Spring	1	*A-65203	Points-Bkr.	1	81109-2	Nut-10-32	1
64677	Spring	1	*65108	Pawl	2	*A-65204	Coil & Core	1	81112	Nut-5/16-24	1
64689	Screw Ass'y.	4	*65109	Stud	2	*65205	Lead	1	81126	Nut-6/32	1
64862	Grommet	1	*65110	Washer	2	*65206	Box-Bkr.	1	81196	Nut-5/16-18	2
*65003	Piston Ring	2	*65111	Mount	1	*65207	Nut	1	82146	8-32x5/8	9
*65006-1	Crankshaft	1	*65112-1	Pin	1	*65208	Condenser	1	82151	8-32x15/16	1
*65006-2	Crankshaft	1	*65113	Shield-Inner	1	*65209	Seal	1	82152	8-32x1 1/4	1
*65007	Bearing	1	*65114	Shield-Outer	1	*A-65210	Cover	1	*82162	10-32x1 3/8	2
*A-65009	Bearing(Set 28)	1	*65115-2	Cover	1	*65211	Seal	1	*82165	10-32x1 5/8	2
*65010	Seat	1	*65116	Bushing	1	*A-65212	Pump	1	*82169	10-32x7/8	1
*65011	Retainer	1	*65118	Rope	1	*A-65213	Rod-Conn.	1	*82170	6-40x1	1
*65012	Reed	4	*65120	Spring	2	*A-65214	Line	1	*82181	8-32x3/4	2
*65013-1	Manifold	1	*65121	Screw	2	*A-65215	Handle	1	83004-1	Washer	4
*65014	Gasket	2	*65122	Grommet	2	*65217	Spring	3	83006-1	Washer-#10	2
*A-65015	Carburetor	1	*A-65123	Bracket	1	*65218	Insert	1	83009	Washer	4
*65016	Gasket	1	*65124	Pad	2	*A-65222-1	Housing	1	83024	Washer-#6	1
*65017	Spring	1	*65125	Ring	1	*A-65233	Carburetor	1	83046	Washer	2
*65018	Gasket	1	*65126	Key	1	65321	Screw	6	84025-1	Washer	2
*65019	Seal	2	*65127	"O" Ring	1	65670	Plate	2	84065-1	Washer-5/16	1
*65021	Spacer	1	*65130-S	Spark Plug	1	65746	Race-Inner	1	86301	Pin-Cotter	1
									86324	Pin-Cotter	1
									90872	"O" Ring	3

\*Denotes new parts

ALWAYS FURNISH SAW MODEL AND SERIAL NUMBER WHEN ORDERING PARTS.



**HOMELITE®**

A **textron** DIVISION

**PORT CHESTER, N.Y., U.S.A.**



PRINTED IN U.S.A.