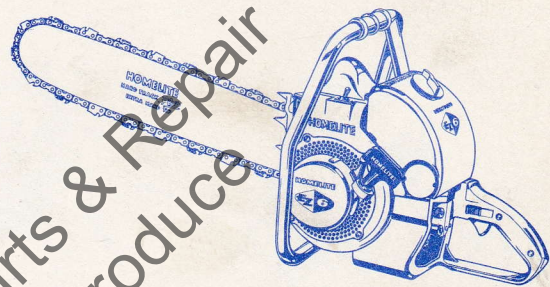


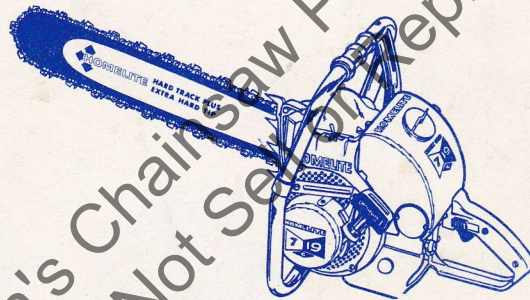
HOMELITE

CHAIN SAW

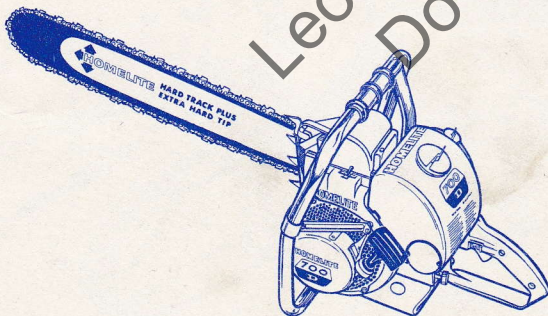
PARTS LIST



EZ, EZ-6



7-19, 7-19C



700D

Leon's Chainsaw Parts & Repair
Do Not Sell or Reproduce

MODEL IDENTIFICATION

- EZ - Two types of magnetos, Wico and Phelon. Units with PHELON parts identified by "P" preceding engine number.
 - EZ-6 (1) - Below Serial No. 739839
 - EZ-6 (2) - From Serial No. 739839
 - EZ-6 (3) - From Serial No. 0745563
 - 7-19 - From Serial No. 0790525
 - 7-19C - From Serial No. 0879352
 - 700D - From Serial No. 1051678
- Supplied with or without governor.



HOMELITE CHAIN SAWS
 EZ, EZ 6; 7-19, 7-19C; 700 D

FIGURE 1

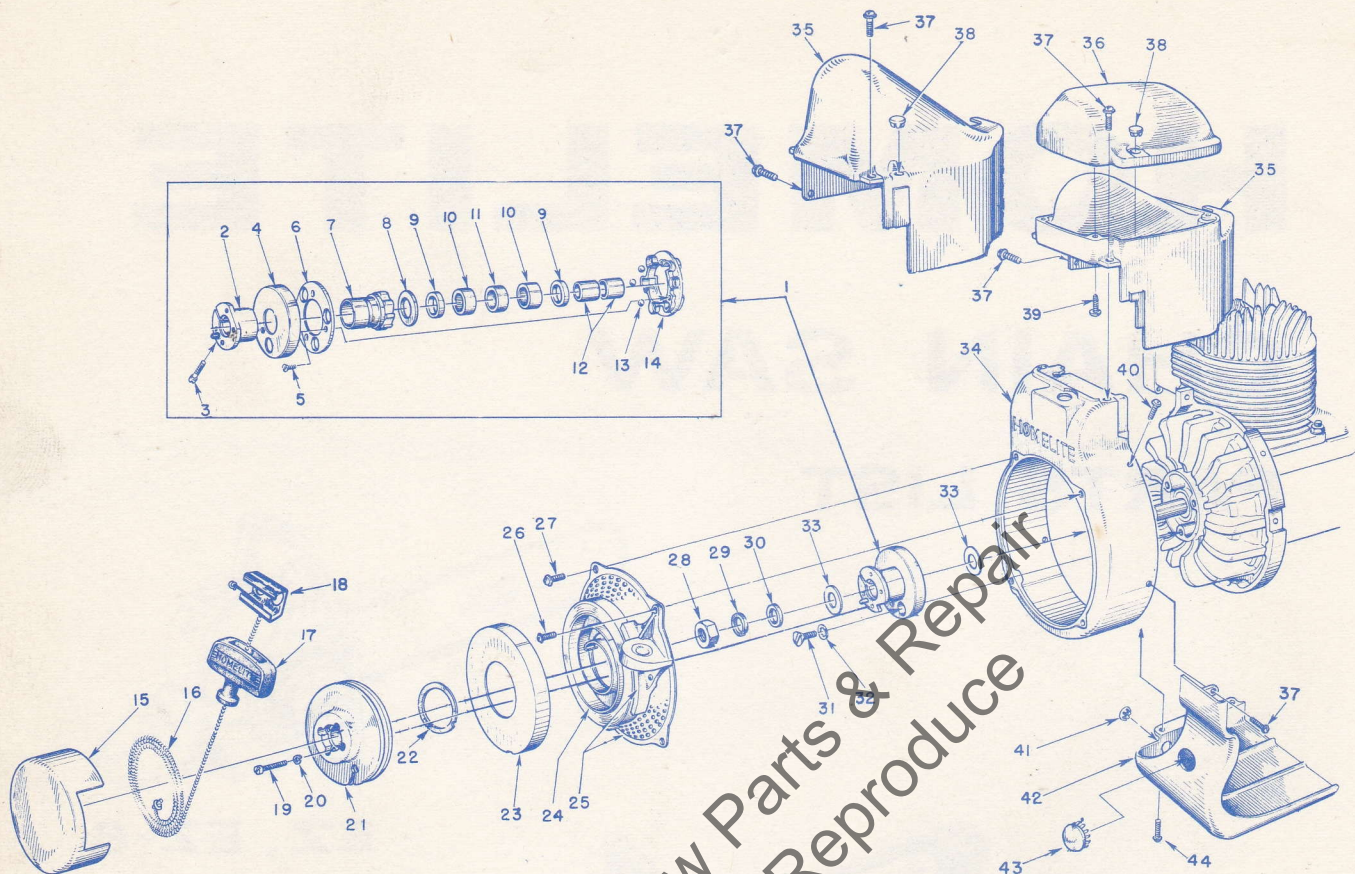
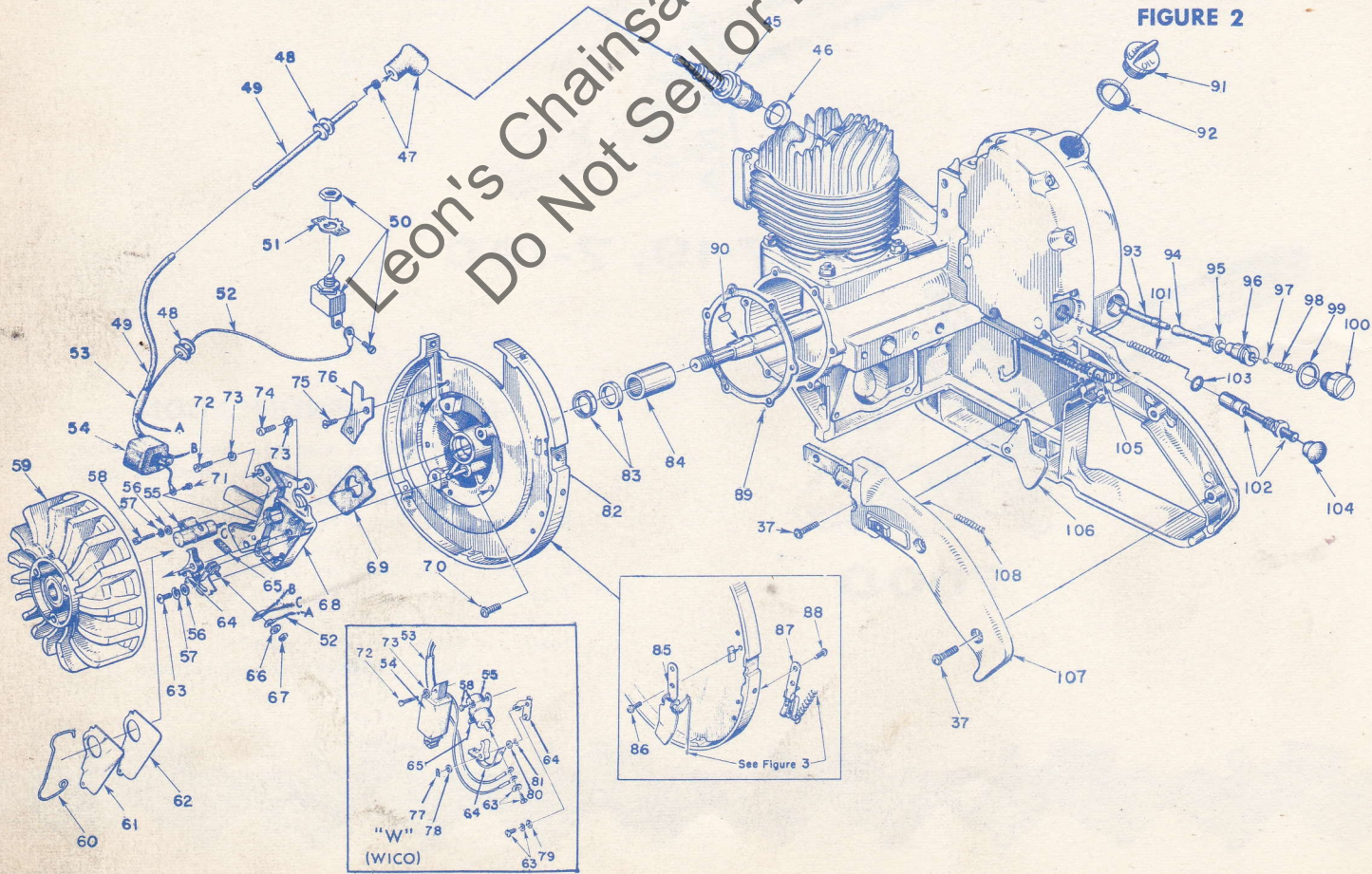


FIGURE 2



Leon's Chainsaw Parts & Repair
 Do Not Sell or Reproduce

HOMELITE CHAIN SAWS EZ, EZ 6; 7-19, 7-19C; 700 D

Circled asterisk * denotes a part that may require adaptation for use in some saws; see notes.
Black circled numerals () refer to note numbers on page 6.

No.	Description	Part No.	EZ					700 D					Qty.	No.	Description	Part No.	EZ					700 D					Qty.
			(1)	(2)	(3)	(4)	(5)	(1)	(2)	(3)	(4)	(5)					(1)	(2)	(3)	(4)	(5)	(1)	(2)	(3)	(4)	(5)	
1	BALL DRIVE	① A-56899										*	1	55	CONDENSER	"P"	55987	*	*	*	*	*	*	*	*	1	
		A-56493										*	1		"W"	55399	*	*	*	*	*	*	*	*	1		
	Includes:	A-77339	⊗	⊗	⊗	⊗	⊗	⊗	⊗	⊗	⊗	*	1	56	WASHER - flat, #8	"P"	84048	*	*	*	*	*	*	*	*	2	
2	HUB & PIN	① A-57098										*	1	57	WASHER - lock, #8	"P"	83060	*	*	*	*	*	*	*	*	2	
		A-56519										*	1	58	SCREW	"P"	55988	*	*	*	*	*	*	*	*	1	
		A-56520										*	1		Screw Unit	"W"	30261	*	*	*	*	*	*	*	*	2	
	Includes: SCREW - hub	72295-A	*	*	*	*	*	*	*	*	*	*	1	59	ROTOR - 6" O. D.	"P" ⑥	56111-A	*	*	*	*	*	*	*	*	1	
4	CUP - sealing	① 56896										*	1		5 O. D. 1/2	"P"	56026-A	*	*	*	*	*	*	*	*	1	
5	SCREW - flat hd., 5-40 x 5/16	80464	*	*	*	*	*	*	*	*	*	*	3		5 O. D. 1/2	"W"	55590	*	*	*	*	*	*	*	*	1	
6	RETAINER - ball	71570-B	*	*	*	*	*	*	*	*	*	*	1	60	CLAMP - dust cover	"P"	55980	*	*	*	*	*	*	*	*	1	
	RATCHET & BEARING	AA-72306-1	*	*	*	*	*	*	*	*	*	*	1	61	COVER - dust	"P"	55979	*	*	*	*	*	*	*	*	1	
7	Includes: RATCHET	AA-73549	*	*	*	*	*	*	*	*	*	*	1	62	GASKET - dust cover	"P"	55978	*	*	*	*	*	*	*	*	1	
8	Includes: WASHER	73525	*	*	*	*	*	*	*	*	*	*	1	63	SCREW - fil. hd., 8-32 x 3/8 "P"	55985	*	*	*	*	*	*	*	*	1		
9	SEAL - garlock	71597	*	*	*	*	*	*	*	*	*	*	2		(w/washer) 6-32 x 5/16 "W"	55411	*	*	*	*	*	*	*	*	2		
10	BEARING - needle	71596	*	*	*	*	*	*	*	*	*	*	2	64	POINTS (set) w/#65 "P"	A-55971	*	*	*	*	*	*	*	*	1		
11	WICK - felt	71595	*	*	*	*	*	*	*	*	*	*	1		w/out #65	A-55402	*	*	*	*	*	*	*	*	1		
12	RACE - inner	74221	*	*	*	*	*	*	*	*	*	*	2	65	WICK - felt	55984	*	*	*	*	*	*	*	*	1		
13	BALL - steel	30255-1	*	*	*	*	*	*	*	*	*	*	3		"W"	30267	*	*	*	*	*	*	*	*	1		
14	PLATE - ball drive	71563-C	*	*	*	*	*	*	*	*	*	*	1	66	WASHER - terminal	"P"	55983	*	*	*	*	*	*	*	*	1	
15	COVER - starter	AA-73234-4	*	*	*	*	*	*	*	*	*	*	1	67	NUT - terminal	"P"	55982	*	*	*	*	*	*	*	*	1	
16	ROPE - starter	55898	*	*	*	*	*	*	*	*	*	*	1	68	BOX - breaker w/core	"P"	55969	*	*	*	*	*	*	*	*	1	
17	GRIP - rope	55937	*	*	*	*	*	*	*	*	*	*	1	69	WASHER - sealing	"P"	55989	*	*	*	*	*	*	*	*	1	
18	INSERT - rope retaining (not shown)	② 58517	⊗	⊗	⊗	⊗	⊗	⊗	⊗	⊗	⊗	⊗	1	70	SCREW - pan hd., 10-32 x 7/16	80576	*	*	*	*	*	*	*	*	6		
		A-56081	*	*	*	*	*	*	*	*	*	*	1	71	SCREW - coil ground	"P"	55977	*	*	*	*	*	*	*	*	1	
19	SCREW - fil. hd., 6-32 x 3/4	80475	*	*	*	*	*	*	*	*	*	*	4	72	SCREW - fil. hd., 10-24 x 7/8 "P"	80660	*	*	*	*	*	*	*	*	2		
20	WASHER - lock #6	83004	*	*	*	*	*	*	*	*	*	*	4		"W"	30270	*	*	*	*	*	*	*	*	2		
21	PULLEY	① 55597-2	⊗	⊗	⊗	⊗	⊗	⊗	⊗	⊗	⊗	⊗	1	73	WASHER - lock, #10	83046	*	*	*	*	*	*	*	*	3		
22	SHIM - plastic	71588	*	*	*	*	*	*	*	*	*	*	1	74	SCREW - fil. hd., 10-24 x 1/2 "P"	80595	*	*	*	*	*	*	*	*	1		
23	COVER - spring housing	71603	*	*	*	*	*	*	*	*	*	*	1	75	SCREW - flat hd., 6-32 x 5/16	80598	*	*	*	*	*	*	*	*	2		
24	SPRING - recoil	① 56497	⊗	⊗	⊗	⊗	⊗	⊗	⊗	⊗	⊗	⊗	1	76	CLAMP - lead	"P"	55595-1	*	*	*	*	*	*	*	*	1	
25	SCREEN & BRACKET w/2 #85073 rivets	① A-56088	*	*	*	*	*	*	*	*	*	*	1		"W"	55595	*	*	*	*	*	*	*	*	1		
		A-56654	*	*	*	*	*	*	*	*	*	*	1	77	LOCK - spring	"W"	28008	*	*	*	*	*	*	*	*	1	
26	SCREW - pan hd., 10-32 x 5/8	80572	*	*	*	*	*	*	*	*	*	*	1	78	WASHER - breaker arm	"W"	28003	*	*	*	*	*	*	*	*	1	
	10-32 x 1/16	80576	*	*	*	*	*	*	*	*	*	*	1	79	WASHER - point screw	"W"	72484	*	*	*	*	*	*	*	*	1	
27	SCREW - pan hd., 10-32 x 3/8	80579	*	*	*	*	*	*	*	*	*	*	3	80	WASHER - contact plate	"W"	55412	*	*	*	*	*	*	*	*	1	
28	NUT - hex jam, 7/16 - 20	81110	*	*	*	*	*	*	*	*	*	*	1	81	WASHER - point aligning	"W"	30268	*	*	*	*	*	*	*	*	1	
29	WASHER - lock, 7/16	83019	*	*	*	*	*	*	*	*	*	*	1	82	BACK PLATE	"P" ⑥	A-56180-A	*	*	*	*	*	*	*	*	1	
30	WASHER - flat, 7/16	84055	*	*	*	*	*	*	*	*	*	*	1		"P"	A-56080	*	*	*	*	*	*	*	*	1		
31	SCREW - flat hd., 1/4 - 20 x 5/8	80173	*	*	*	*	*	*	*	*	*	*	3		"W"	A-55790	*	*	*	*	*	*	*	*	1		
32	WASHER - lock, 1/4	83074	*	*	*	*	*	*	*	*	*	*	3	83	Includes: SEAL - garlock	71597	*	*	*	*	*	*	*	*	2		
33	WASHER - thrust	55652	*	*	*	*	*	*	*	*	*	*	2	84	BEARING - needle	55204	*	*	*	*	*	*	*	*	1		
34	SHROUD - air (fan housing)	① A-56063-1	*	*	*	*	*	*	*	*	*	*	1	85	GOVERNOR - without rod	⑦ A-56150	*	*	*	*	*	*	*	*	1		
		A-56650-3	*	*	*	*	*	*	*	*	*	*	1		without rod	A-55640-1	*	*	*	*	*	*	*	*	1		
35	SHIELD - cylinder	② 55967-1	⊗	⊗	⊗	⊗	⊗	⊗	⊗	⊗	⊗	⊗	1	86	SCREW - pan hd., 6-32 x 5/16	80605	*	*	*	*	*	*	*	*	2		
		55015-3	⊗	⊗	⊗	⊗	⊗	⊗	⊗	⊗	⊗	⊗	1	87	PLATE - governor adjusting	A-55645	*	*	*	*	*	*	*	*	1		
36	CAP - cylinder shield	56968	*	*	*	*	*	*	*	*	*	*	1	88	SCREW - pan hd., 8-32 x 5/16	80629	*	*	*	*	*	*	*	*	2		
37	SCREW - pan hd., 8-32 x 1/2	③ 80560	⊗	⊗	⊗	⊗	⊗	⊗	⊗	⊗	⊗	⊗	8	89	GASKET - back plate	55049	*	*	*	*	*	*	*	*	1		
38	PLUG - button	32814	*	*	*	*	*	*	*	*	*	*	1	90	KEY - rotor	75078	*	*	*	*	*	*	*	*	1		
39	SCREW - pan hd., 6-32 x 1/2	80513	*	*	*	*	*	*	*	*	*	*	4	91	CAP - oil w/#56607 w/#72280	⑧ A-56580	⊗	⊗	⊗	⊗	⊗	⊗	⊗	⊗	1		
40	SCREW - pan hd., 8-32 x 3/8	③ 80577	*	*	*	*	*	*	*	*	*	*	4		A-56448	*	*	*	*	*	*	*	*	1			
41	PLUG - button	55681	*	*	*	*	*	*	*	*	*	*	1	92	Includes: GASKET	⑧ 56607	*	*	*	*	*	*	*	*	1		
42	SHIELD - carburetor	④ 55512-3	⊗	⊗	⊗	⊗	⊗	⊗	⊗	⊗	⊗	⊗	1		72280	⊗	⊗	⊗	⊗	⊗	⊗	⊗	⊗	1			
43	PLUG - button	29187	*	*	*	*	*	*	*	*	*	*	1	93	FINDER - oil	AA-55259-A	*	*	*	*	*	*	*	*	1		
44	SCREW - pan hd., 10-32 x 1/16	④ 80576	*	*	*	*	*	*	*	*	*	*	2	94	SLEEVE - flexible	55133-A	*	*	*	*	*	*	*	*	1		
45	SPARK PLUG	⑤ 71530-S	*	*	*	*	*	*	*	*	*	*	1	95	GASKET	55110	*	*	*	*	*	*	*	*	1		
46	Includes: GASKET	25038	*	*	*	*	*	*	*	*	*	*	1	96	FITTING - check valve	55109-A	*	*	*	*	*	*	*	*	1		
47	TERMINAL - "Sparky"	A-55373	*	*	*	*	*	*	*	*	*	*	1	97	BALL - check (3/32 diam.)	25527	*	*	*	*	*	*	*	*	1		
48	GROMMET	60929	*	*	*	*	*	*	*	*	*	*	2	98	SPRING	55288-A	*	*	*	*	*	*	*	*	1		
49	LEAD - hi-tension 8" lg "P" 7 3/16 long "P" early "W"	⑥ 55235-A	⊗	⊗	⊗	⊗	⊗	⊗	⊗	⊗	⊗	⊗	1	99	GASKET	55107	*	*	*	*	*	*	*	*	1		
		56029	*	*	*	*	*	*	*	*	*	*	1	100	CAP - supply line	A-55628	*	*	*	*	*	*	*	*	1		
		55695	*	*	*	*	*	*	*	*	*	*	1	101	SPRING	71762	*	*	*	*	*	*	*	*	1		
50	SWITCH - toggle	A-57650-2	*	*	*	*	*	*	*	*	*	*	1	102	PLUNGER - oil (no button)	⑨ A-57834-5	⊗	⊗	⊗	⊗	⊗	⊗	⊗	⊗	1		
51	PLATE - "on - off"	55879	*	*	*	*	*	*	*	*	*	*	1	103	Includes: "O" RING	74388	*	*	*	*	*	*	*	*	1		
52	LEAD - ground "P"	⑥ 56028	*	*	*	*	*	*	*	*	*	*	1	104	BUTTON - plunger	⑨ 57289-1	⊗	⊗	⊗	⊗	⊗	⊗	⊗	⊗	1		
	"W"	55696	*	*	*	*	*	*	*	*	*	*	1		A-55630	*	*	*	*	*	*	*	*	1			
53	SLEEVE - insulating "P"	56027	*	*	*	*	*	*	*	*	*	*	1		Includes: SPRING	55045-A	*	*	*	*	*	*	*	*	1		
	"W"	55697	*	*	*	*	*	*	*	*	*	*	1	106	TRIGGER	AA-55207	*	*	*	*	*	*	*	*	1		
54	COIL	"P" ⑥ 55986-A	*	*	*	*	*	*	*	*	*	*	1	107	COVER - grip	A-55631	*	*	*	*	*	*	*	*	1		
	"W"	55403	*	*	*	*	*	*	*	*	*	*	1		Includes: LOCK	AA-55282	*	*	*	*	*	*	*	*	1		
													1	108	Includes: SPRING	72970	*	*	*	*	*	*	*	*	1		

HOMELITE CHAIN SAWS
EZ, EZ 6; 7-19, 7-19C; 700 D

FIGURE 3

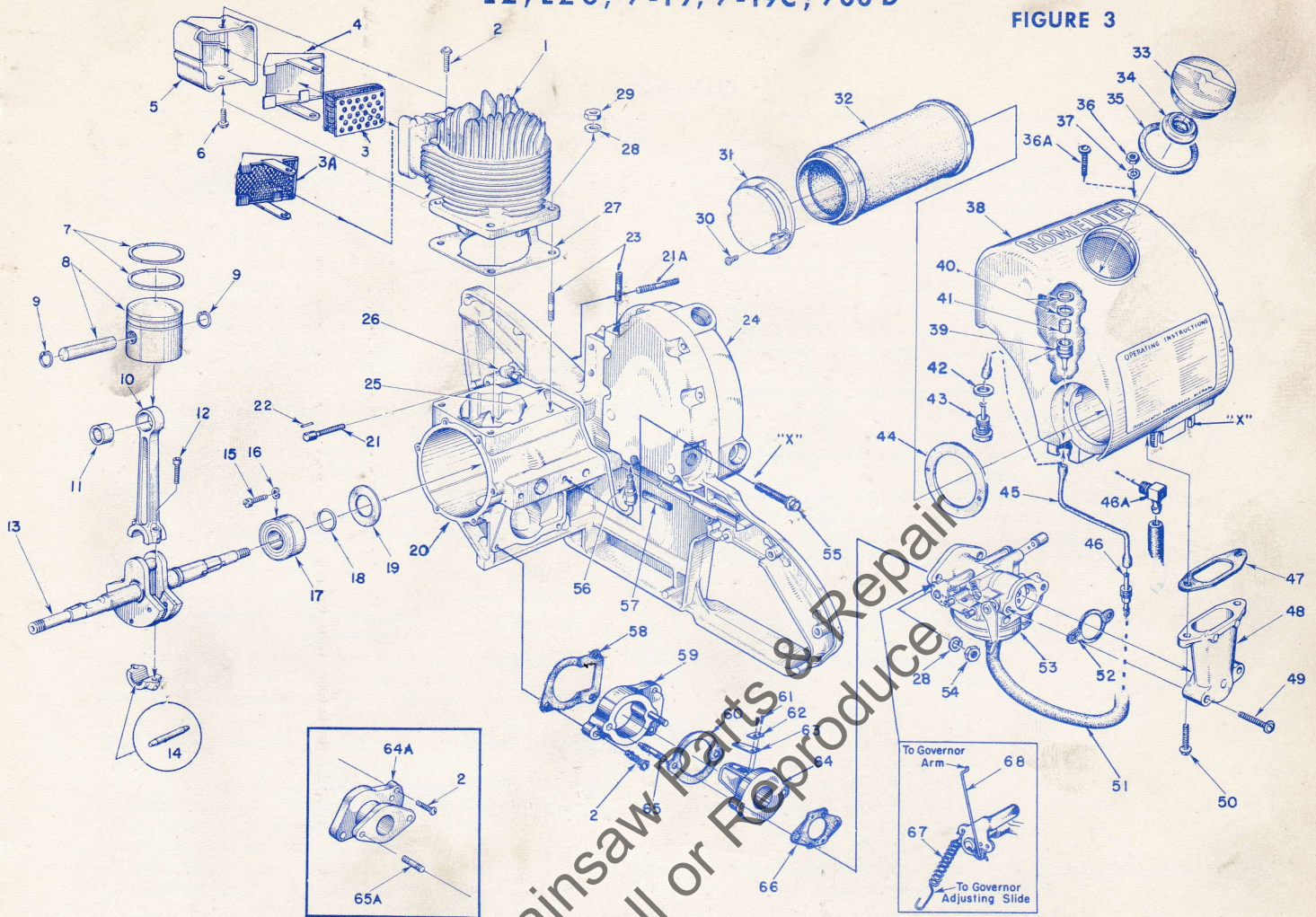
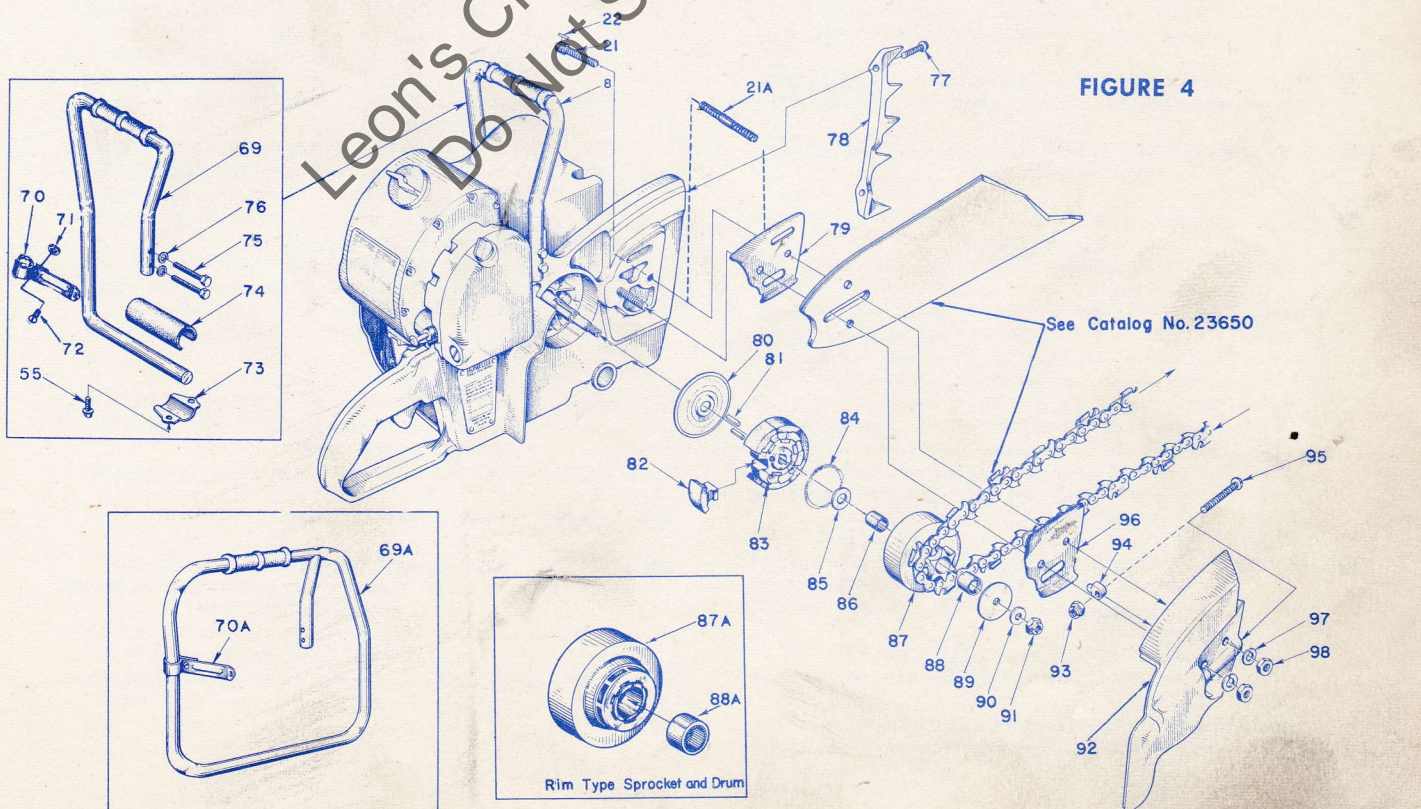


FIGURE 4



HOMELITE CHAIN SAWS
EZ, EZ 6; 7-19, 7-19C; 700 D

NOTES

- 1 BALL DRIVE - #A-56899 assembly adaptable to all #A-56493 applications; see 700D column for components. #A-56493 (long hub) supersedes #A-56096 (no longer available); see HUB and SPRING (below) and SM#218-CS. #A-77339 (short hub) supersedes #AA-72308-1 (no longer available); see HUB and SPRING (below) and SM#218-CS.
- HUB - #A-57098 can be used in place of #A-56519; requires addition of #56896 sealing cup; refer to 700D column. #A-56519 (long hub) used with #56497 spring supersedes #A-56181 (long hub); see SM#170-CS, 218-CS. #A-56520 (short hub) used with #56497 spring supersedes #A-56181 (short hub); see SM#170-CS, 218-CS.
- PULLEY - #55597-2 supersedes #55597-1A, #55597-1, and #A-55658 (w/#71577 pin); see SPRING (below) and SM#218-CS, 265-CS.
- SPRING - #56497 supersedes #71470-A. In older units require adaptation or change of old pulley and change in ratchet hub. See SM#218-CS, 265-CS.
- SCREEN & BRACKET - #A-56088 used with larger shroud (fan housing) and 6" diameter rotor; see SM#170a-CS. #A-55654 used with smaller (early) shroud (fan housing) and 5 1/4" diameter rotor; see SM#170a-CS.
- SHROUD, air (fan housing) - #A-56063-1 used with larger screen, 6" diameter rotor, etc.; refer to BACKPLATE Note 6 and SM#170a-CS. #A-55650-3 used with small screen, 5 1/4" rotor, etc.; refer to BACKPLATE Note 6 and SM#170a-CS.
- 2 INSERT, rope retaining - #58517 supersedes assembly #A-56081 (with two #80619 screws).
- 3 SHIELD, cylinder - #55015-3 (thicker) supersedes #55015-1; requires longer SCREW (below). SCREW - #80560 used with #55015-3 shield; #80577 screw (index #40) used with original (thinner) shields.
- 4 SHIELD, carburetor - #55512-3 supersedes #A-55682 (w/plug). SCREW #80576 (10-32 x 7/16) supersedes #80625 (10-32 x 1/2).
- 5 SPARK PLUG - Cold weather operation may require hotter plug; see SM#355-CS.
- 6 LEAD, high tension - #55235-A may be used on all models when cut to 7 7/8" length. COIL - #55986-A supersedes #55986. See SM#433-CS and ROTOR (below). ROTOR - #56111-A supersedes #56111 (used with governor); #56026-A supersedes #56026 (used without governor); See SM#315-CS, 320-CS. New rotors (with "-A" suffix) require new coil #55986-A; see SM#433-CS. NOTE: First run EZ models equipped with WICO ignition parts (identified by "W"); later EZ models equipped with Phelon ignition parts (identified by "P"). BACK PLATE - #A-56180-A used with 6" rotor, larger screen, and shroud; refer to SHROUD Note 1 and SM#170-CS.
- 7 GOVERNOR - 700D models supplied with governors require #56111-A rotor, 700D models supplied without governors require #56026-A rotor. See SM #315-CS, #320-CS. #A-56150 used with #56111-A rotor (6" O. D.). #A-55640-1 used with #56026-A and #55590 rotors (5 1/2" O. D.). SPRING, governor - #55529 used with governed saws; see above. ROD, governor - #55642 used with governed saws; see above.
- 8 CAP, oil - #A-56580 (3/4 - 16 thrd.) required in new A-55621-A oil reservoir cover with 3/4 - 16 holes. #A-56448 (7/8 - 14 thrd.) supersedes #AA-71655-1 (7/8 - 14 thrd.); used in original oil reservoir cover with 7/8 - 14 hole. See SM#387-CS. GASKET - #56607 used with #A-56580 cap; #72280 used with #A-56448 or #AA-71655-1 caps. COVER, oil reservoir - #A-55621-A supersedes #A-55621 requires #A-56580 oil cap; included in service replacement crankcase. See SM#187-CS. ELBOW - #56707 replaces #31734 (elbow) and 31733-1 (adapter).
- 9 PLUNGER, oil - Original plunger and button assembly now serviced by separate plunger and button. #A-57834-5 supersedes A-57834-4, A-57834-3 and #A-57834 (with button). "O" RING - Improved #A-57834-5 and #A-57834-4 plungers use only 1 #74388 "O" ring. BUTTON - #57289-1 button supplied separately.
- 10 CYLINDER - #56182-A supersedes #55490; see SM#201-CS. ELEMENT, exhaust - #A-56613-A (element and cap) interchangeable with #A-56068-A element and #56396 cap. CAP, exhaust - #56396 cap and #A-56068-A element interchangeable with #A-56613-A element & cap; supersedes #55507 exhaust cap; see SM#201-CS.
- 11 CONNECTING ROD - #AA-55195-A supersedes #AA-55195; see SM#414-CS. SCREW - #80805 supersedes #80541 and #80541-A. CRANKSHAFT - #A-57461, with 2 counterweights, supersedes #56098-C; used with larger I.D. bearing, etc.; see SM#170-CS, 323-CS. #55523 used with smaller I.D. bearing, etc.; see SM#170a-CS. BEARING, main - #56097-S large I. D.; #55193-S small I. D.; see SM#170-CS. CRANKCASE - #A-57640-B supersedes #A-57640-A, A-57640, #A-57097, and #A-56202. See BOLT, STUD, (below) for variations. #A-56161-A supersedes #A-56161 and #A-55835. BOLT - #57175 (with #41738 pin) in crankcase #A-57640-B, #A-57640-A and #A-57640. STUD - #55623 used in crankcase #57097, A-56202, A-56161-A, #A-56161, and #A-55835. PIN - #41738 used w/#57175 guide bar bolt; see BOLT (above). STUD - #55871 (fuel tank) fits service replacement crankcases #A-57640-B and #A-56161-A only, enlarge diameter of fuel tank hole to 1/2" to accommodate large stud. See NUT and WASHER (below). #57713 (fuel tank) fits earlier crankcases with 10 - 32 tap lock insert for fuel tank attachment, interchangeable with #80572 screw. See NUT and SCREW (below). NUT - #81114 used with #55871 stud (above) and #84019 flat washer (below). #81108 used with #57713 stud (above). SCREW - #80572 used in earlier crankcases with 10 - 32 tap lock insert; interchangeable with #57713 stud and #81108 nut (above). WASHER - #84019 used with #81114 nut on #55871 stud (above).
- 12 GASKET, cylinder - #56864 supersedes #55050-A.
- 13 SCREW - #80630 supersedes #80571; see SM#322-CS. AIR FILTER - #57337-A supersedes #57337, #56876, #56464, and #A-55533; see SM#322a-CS. CAP, fuel tank - #A-56908 (assembly) supersedes #A-55305 (assy.); relief valves are not interchangeable. VALVE, relief - #56865 required in #A-56908, #A-55301-A required in #A-55305; see CAP (above).

(continued on page 7)

HOMELITE CHAIN SAWS EZ, EZ 6; 7-19, 7-19C; 700 D

NOTES

- FUEL TANK - #A-57781-A service replacement (diameter of hole in mounting lug enlarged to $\frac{3}{32}$) supersedes #A-57781, #A-55671, #A-55670-1, #A-55670 (with decals); these tanks have $\frac{3}{32}$ diameter hole in mounting lug. Also see Note **11**, STUD #55871.
- STRAINER - #A-56200 supersedes #A-74375, SM#191-CS.
- GASKET - #57041 with longer #80630 screws must be used with #57337-A filter (see above).
- FITTING, outlet - #55572 used in original fuel tanks; not required in #A-57781-A or #A-57781 replacement tanks.
- GASKET, outlet fitting - #55676 used with 55572 fitting (above).
- FITTING, fuel line - #57652 used with replacement fuel tanks #A-57781-A and #A-57781.
- #74917 elbow used in original fuel tanks; supersedes #55677 shut-off valve. See SM#349-CS.
- 14** CARBURETOR - #A-58102 (HL-117C) and #A-57440 (HL-104A, -105A) are replacement carburetors. Refer to CARBURETOR REPLACEMENT & REPAIR PARTS LIST #23731 for application.
- 15** REED - #55941-1 (stainless steel) supersedes #55941; see SM#437-CS.
- 16** HANDLE - #A-57037 (flush cut) supersedes #A-56093 and #A-55683. #A-57043 (wrap-around) supersedes #A-56091 and #A-55808.
- 17** PLATE, inner guide bar - #56871-A supersedes #56871 and #55666.
PLATE, outer guide bar - #56872-B supersedes #56872-A, #56872 and #55667.
- 18** COVER, clutch - #56101-A supersedes #56101, use #55075-3A spider. #55659-B supersedes #55659-A; use #55075-A spider. See SM#170-CS, 273-CS.
KEY - #55225-1A supersedes #55225-1, #55225.
SHOE, clutch - #55076-1A supersedes #55076-1.
SPIDER, clutch - #55075-3A supersedes #55075-3, #55075-1A; used with #56101-A clutch cover.
#55075-A supersedes #55075, used with #55659-B clutch cover. See SM#170-CS and #273-CS.
SPRING, clutch - #55123-C supersedes #55123-B, #55123-A, #55123; use only in pairs. See SM#317-CS.
NUT - #81192 supersedes #81116, permits use of #22808 combination wrench.
- 19** SPROCKET & DRUM - #A-56377 supersedes #A-55662; see SM#217-CS.

DECALS

Description	Model	Part No.
"STARTING INSTRUCTIONS"	EZ	55816-1
"HOMELITE, EZ" - on starter	EZ	55817
"HOMELITE" - on tank	EZ	55818
"INSTRUCTIONS" - on tank	EZ6, 7-19, 700D	55968-B
"HOMELITE, EZ-6"-on starter	EZ-6	56031
"HOMELITE, EZ-6"-on tank	EZ-6	56032

Description	Model	Part No.
"7-19C" - on tank	7-19, 7-19C	56385-A
"HOMELITE, 7-19C"-on starter	7-19, 7-19C	56388-B
"HOMELITE" - on tank	ALL	56400
"700D" - on tank	700D	57013
"HOMELITE, 700D"-on starter	700D	57014
"HOMELITE" - on air shroud	ALL	57029

NOTE: Decals with "▼" will not be available after present stock is exhausted.

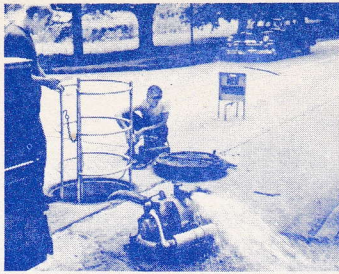
TOOLS

Description	Part No.
COMBINATION WRENCH	22808
PLIERS - snap ring, #1	22828
REMOVER - magneto rotor	A-22560
PLATE - crankshaft aligning	22812
SLEEVE - seal assembly	22819
PLUG - seal assembly	22830-A
PLUG - bearing	22831
PULLER - clutch spider	A-23131
BODY - assembly fixture	23136
JACKSCREW - crankshaft	A-23137
ADAPTER - bearing (#55193-S)	23138
ADAPTER - bearing (#56097-S)	23138-1
PLUG - sprocket bearing	23139

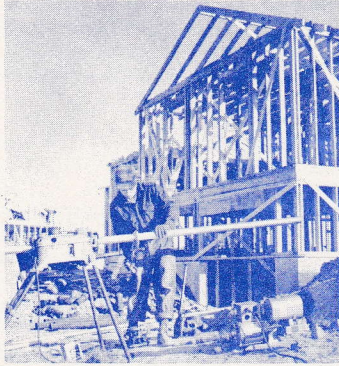
MODEL IDENTIFICATION

EZ	-	Two types of magnetos, Wico and Phelon. Units with PHELON parts identified by "P" preceding engine number.
EZ-6 (1)	-	Below Serial No. 739839
EZ-6 (2)	-	From Serial No. 739839
EZ-6 (3)	-	From Serial No. 0745563
7-19	-	From Serial No. 0790525
7-19C	-	From Serial No. 0879352
700D	-	From Serial No. 1051678
		Supplied with or without governor.

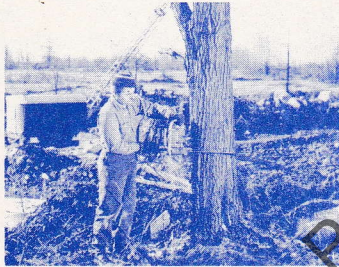
**You'll
SPEED WORK
and make
MORE MONEY
with...**



HOMELITE
SELF-PRIMING PUMPS



HOMELITE
DEPENDABLE GENERATORS



HOMELITE
POWERFUL ONE-MAN CHAIN SAWS



HOMELITE
ONE-MAN CONCRETE VIBRATORS



HOMELITE — BOSCH (Germany)
ELECTRIC BUILDER'S HAMMERS

HOMELITE

A **textron** DIVISION

PORT CHESTER, N. Y., U. S. A.