

PARTS LIST

PART NO. 24478 Rev. 1

PRINTED IN U.S.A.

PRICE .35

E-Z 250

AUTOMATIC

HOMELITE®

CHAIN SAW

Leon's Chainsaw Parts & Repair
Do Not Sell or Reproduce

HOMELITE TEXTRON

Homelite Division of Textron Inc.

E-Z 250 AUTOMATIC

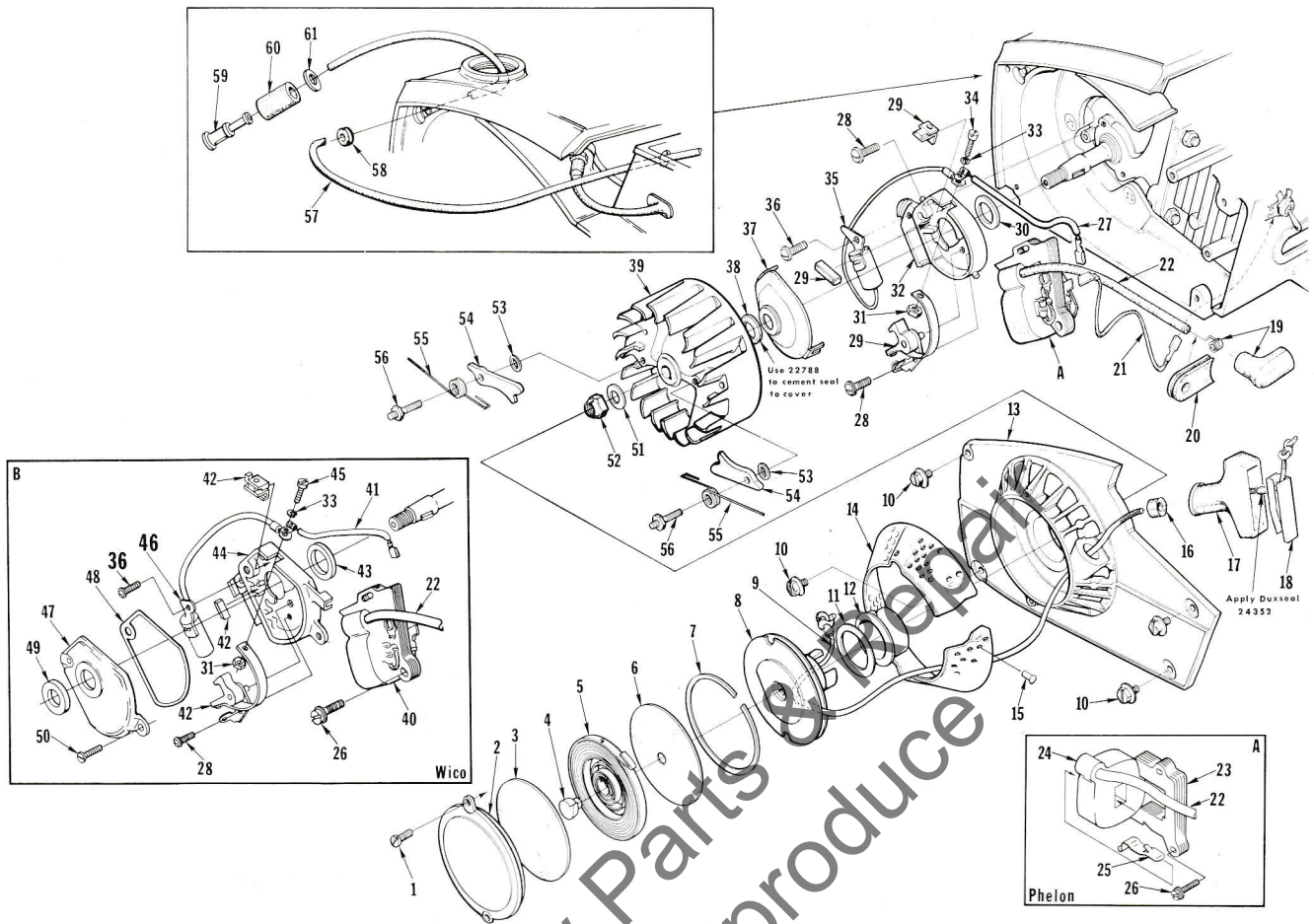


FIGURE 1

No.	Description	Part No.	Qty.	No.	Description	Part No.	Qty.
1	SCREW-pan, 8-32 x 3/8	80577	2	33	WASHER-lock #6	83004-1	1
2	COVER-starter	65095-2	1	34	SCREW-hex, 6-32 x 7/16	(P) 67628	1
3	SHIELD-spring (inner)	65113	1	35	CONDENSER	(P) 65286	1
4	LOCK-spring	65102	1	36	SCREW-pan, 6-32 x 1/2	80630	1
5	SPRING-rewind	65107	1	37	COVER-breaker box	(P) A-65210-A	1
6	SHIELD-spring (outer)	65114	1	38	Includes: SEAL-felt	(P) 65211	1
7	RING-retaining	65125	1	39	ROTOR-magneto	(P) 65288	1
8	PULLEY & CUP	A-65170	1		ROTOR-magneto	(W) 68701	1
9	ROPE-starter	65118	1		Insert B for Wico parts		
10	SCREW-hex, 10-32 x 5/8	80704	4	40	COIL & CORE- See insert B	(W) 68716	1
11	SHIELD-pulley	67893	1	41	LEAD GROUP-primary	(W) 68712	1
12	BUSHING-starter cup	65116	1	42	POINTS-breaker	(W) A-68710	1
13	HOUSING-rewind starter	A-65222-1	1	43	Includes: SEAL-felt	(W) 68705	1
14	Includes: SCREEN-air inlet	65189	1	44	BOX-breaker	(W) 68708	1
15	STUD-drive #2	67191	3	45	SCREW-hex, 6-32 x 1/2	(W) 68700	1
16	BUSHING-starter rope	65185	1	46	CONDENSER	(W) 68711	1
17	GRIP-starter rope	65183	1	47	COVER-breaker box	(W) A-68704	1
18	INSERT-rope retaining	68837	1		Includes:		
19	TERMINAL-spark plug	A-65198	1	48	GASKET-breaker box cover	(W) 68774	1
20	GROMMET-hi-tension lead	65135	1	49	SEAL-felt	(W) 68773	1
21	LEAD-ground	A-63939	1	50	SCREW-cover mounting	(W) 68715	2
22	LEAD-hi-tension	65205	1	51	WASHER-flat, 5/16	84065-1	1
*23	CORE-coil See insert A	(P) 68255	1	52	NUT-hex, 5/16-24	81112	1
*24	COIL-ignition See insert A	(P) 68256	1	53	WASHER-starter pawl	65110	2
*25	RETAINER-coil See insert A	(P) 68257	1	54	PAWL-starter	65108	2
26	SCREW-coil core See insert A	64021	2	55	SPRING-starter pawl	65120	2
27	LEAD GROUP-primary	(P) 65291	1	56	STUD-starter pawl	65109	2
28	SCREW-pan, 6-32 x 3/8	80571	2	57	LINE-fuel	A-68053	1
29	POINTS-breaker	(P) A-65203-A	1	58	Includes: GROMMET	68046	1
30	Includes: SEAL-felt	(P) 65209	1	59	FILTER-fuel	A-63920	1
31	NUT-hex	65207	1	60	Includes: FILTER-felt	64083-1	1
32	BOX-breaker	(P) 65206-A	1	61	WASHER	64182	1

Phelon and Wico parts are not individually interchangeable

(P) Phelon parts (W) Wico parts * Denotes new parts

E-Z 250 AUTOMATIC

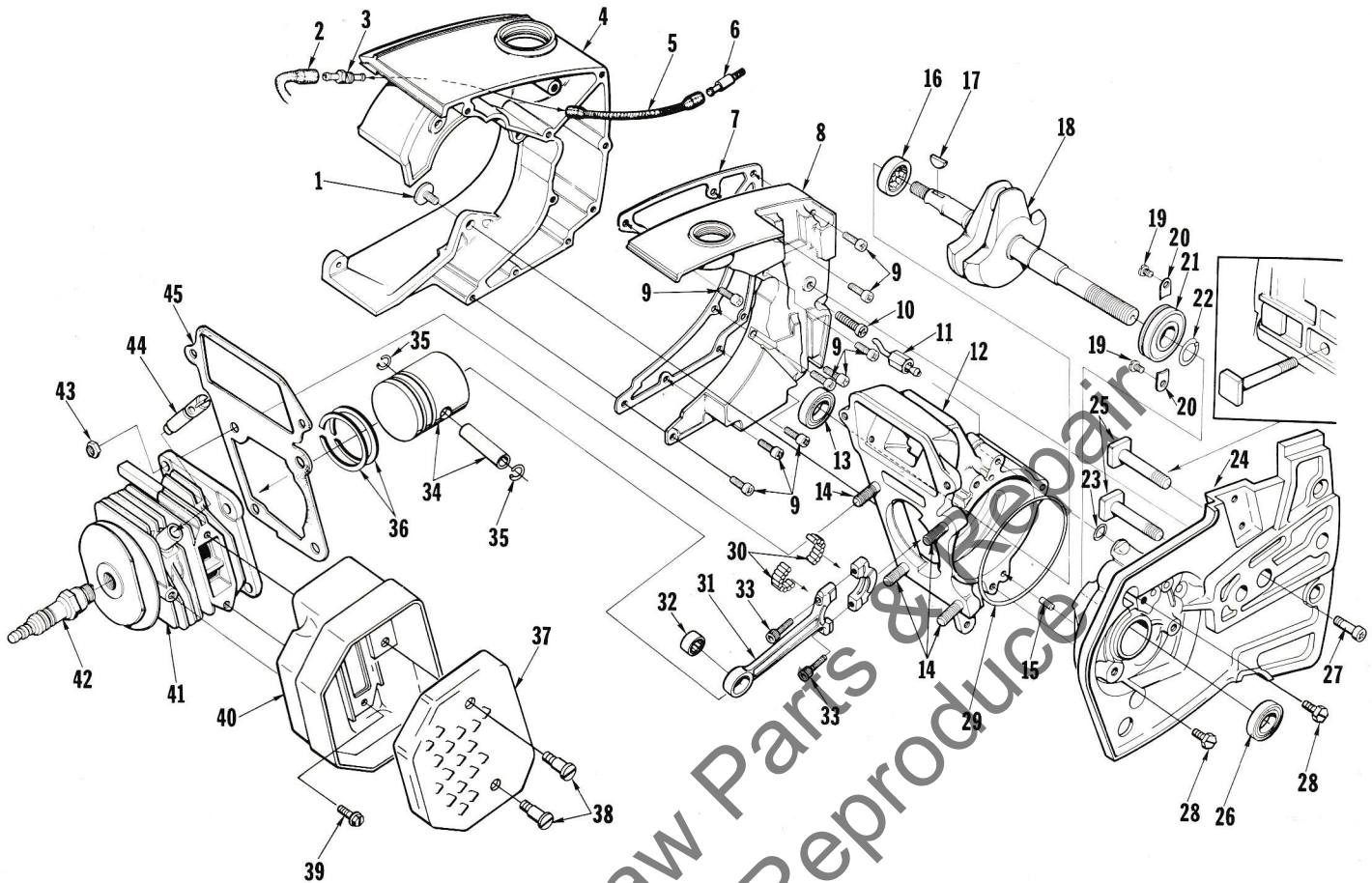


FIGURE 2

No.	Description	Part No.	Qty.	No.	Description	Part No.	Qty.
1	SCREW-retaining	65321	3	27	SCREW-fil, drivecase retainer	65157	1
2	LINE-oil	65137	1	28	SCREW-hex, 12-24 x 5/8	80676	3
3	FITTING-oil line	65138	1	29	"O" RING	65127	1
4	TANK-fuel and oil	65037-2	1	30	BEARING-needle (set of 28)	A-67971	1
5	LINE-oil (pickup)	58340-B	1	31	ROD-connecting	A-68051	1
6	FILTER-oil	A-65172	1		Includes:		
7	GASKET-fuel and oil tank	65046	1	32	BEARING-needle	68512	1
8	COVER-fuel and oil tank	65115-2	1	33	SCREW-socket, 8-32 x 9/16	80805	2
9	SCREW-fil, 8-32 x 5/8	82146	9	34	PISTON & PIN	A-68487	1
10	SCREW-fil, 8-32 x 1-1/4	82152	1		Includes:		
11	LINE-oil	A-65214	1	35	RING-piston pin retaining	64813	2
12	CRANKCASE	A-65202	1	36	PISTON RING	68508	2
13	Includes: SEAL	65019	1	*	MUFFLER- See Note	A-68254	1
14	STUD-cylinder	55871	4		Includes:		
15	PIN-dowel	65153	1	*37	CAP-muffler	68253-1	1
16	BEARING-roller	65179	1	38	SCREW-shoulder	64133-A	2
17	KEY-woodruff	65126	1	39	SCREW-hex, 10-32 x 3/8	80870	3
18	CRANKSHAFT	65006-2	1	*40	BODY-muffler	A-65152-2	1
19	SCREW-bearing retaining	59704	2	41	CYLINDER-(1-9/16" dia.)	A-67874-1	1
20	WASHER-lock special	63905	2	42	SPARK PLUG	65130-S	1
21	BEARING-ball	65044-S	1	43	NUT-hex, 1/4-28	81065-2	4
22	RING-retaining	65045	1	44	VALVE-compression release	A-65184	1
23	"O" RING	59074	1	45	GASKET-cylinder	65018	1
24	DRIVECASE	A-68489	1				
25	Includes: BOLT-guide bar	58753	2				
26	SEAL	65019	1				

* Denotes new parts

Note - For units with Baffle Type Muffler the following are still available:
 BAFFLE - 67736, REED - 67394,
 STOP - 67413-1A, STUDS - 68103-1
 and NUTS - 81109-2.

E-Z 250 AUTOMATIC

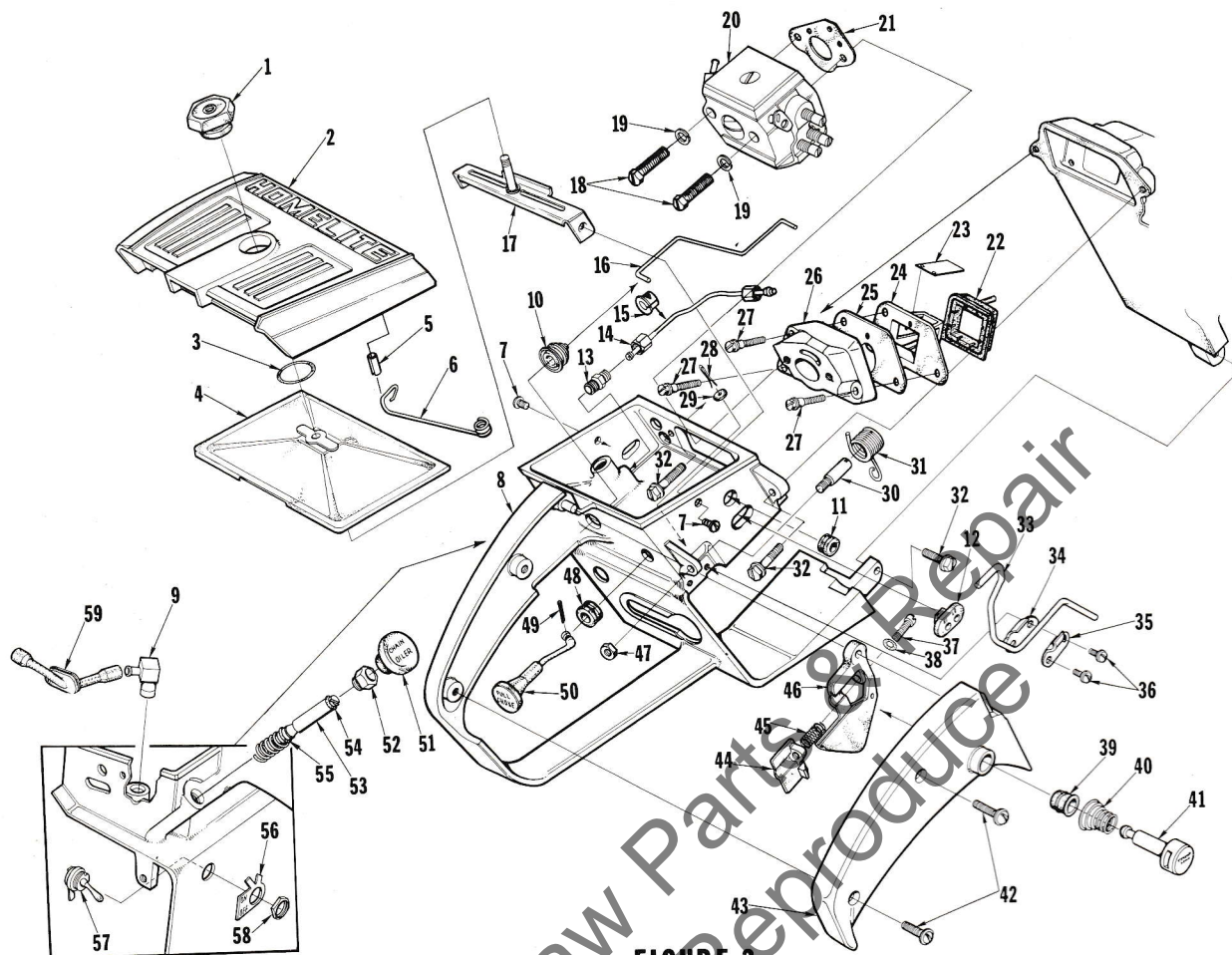


FIGURE 3

No.	Description	Part No.	Qty.	No.	Description	Part No.	Qty.
1	NUT-cover mounting	A-65272	1	30	POST-spring	65023	1
2	COVER-air filter	65096-5	1	31	SPRING-release valve	65174	1
3	RING-retaining	58319-A	1	32	SCREW-hex, 10-24 x 5/8	80676	3
4	FILTER ELEMENT-air	A-65178	1	33	LEVER-release	65173	1
5	PIN-roll, 3/16 x 5/16	68448	1	34	PLATE-lever	65092	1
6	TACHOMETER-vibration arm	68113	1	35	CLAMP-lever	65093	1
7	SCREW-pan hd., 8-32 x 3/8	80577	2	36	SCREW-pan, 6-32 x 3/8	80571	2
8	HANDLE-throttle	A-65215-D	1	37	SCREW-pan, 6-40 x 1	82198	1
	Includes:			38	"O" RING	65260	1
9	VALVE-check (inlet)	A-65076	1	39	BUSHING	67752	1
10	BOOT-throttle rod	67634	1	40	SPRING-throttle latch	64677	1
11	GROMMET-idle adjusting	68197	1	41	PIN-throttle latch	65171-A	1
12	GROMMET-"HI-LO"	68196	1	42	SCREW-pan, 8-32 x 1/2	80560	2
	LINE-fuel (not shown)	A-68053	1	43	COVER-throttle handle	65042-3A	1
	Includes: GROMMET (not shown)	68046	1	44	STOP-throttle adjustment	65147-A	1
13	VALVE-check (outlet)	A-65077	1	45	SPRING-throttle stop	65188	1
14	LINE-oil	A-65214	1	*46	TRIGGER-throttle	65031-1	1
15	GROMMET-oil line	65085	1	47	NUT-hex, #6-32	81126	1
16	ROD-throttle	65056	1	48	GROMMET-choke	64862	1
17	BRACKET-air filter cover	A-65123	1	49	PIN-cotter	86324	1
18	SCREW-hex, 10-32 x 1-5/8	82165	2	50	ROD-choke	65072-1	1
19	WASHER-lock, #10	83046	2	51	BUTTON-oil pump	65084	1
20	CARBURETOR-(HDC-4)	A-68415	1	52	NUT-plunger	65082	1
21	GASKET-carburetor	65016	1	53	PLUNGER-oil pump	A-68061-A	1
22	RETAINER-reed valve	65011-A	1	54	Includes: "O" RING	59074	1
23	REED-valve	65012-A	4	55	"O" RING	58406	1
24	SEAT-reed valve	65010	1	56	PLATE-"On-Off"	63910	1
25	GASKET-reed valve seat	65014	1	57	SWITCH-grounding	A-63938	1
26	MANIFOLD-intake	A-65154-1A	1	58	Includes: NUT-hex	72084-A1	1
27	SCREW-shoulder	64349-A	3	59	LINE-oil	65137	1
28	PIN-cotter	86301	1				
29	WASHER-felt	63290	1				

* Denotes new parts

E-Z 250 AUTOMATIC

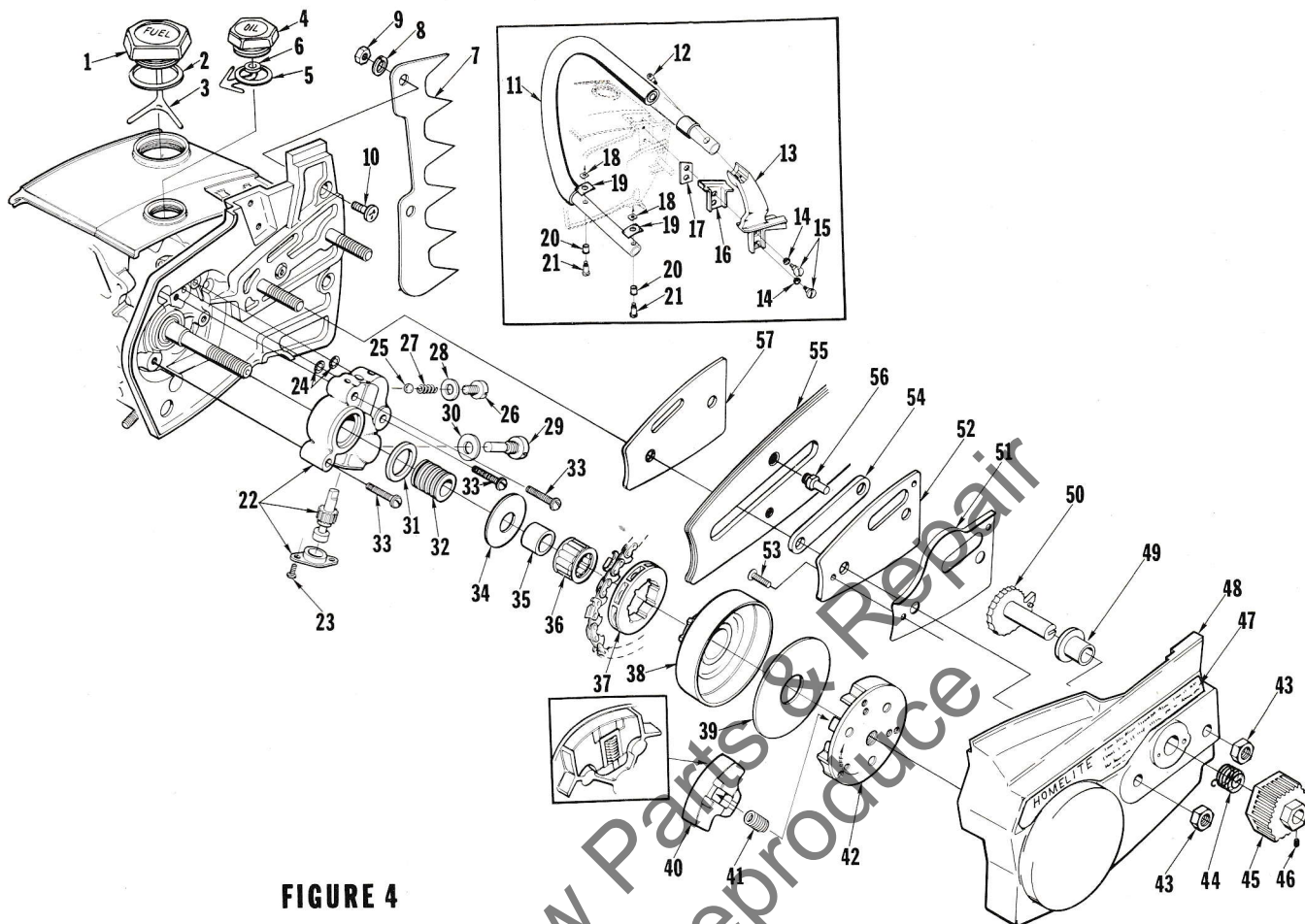


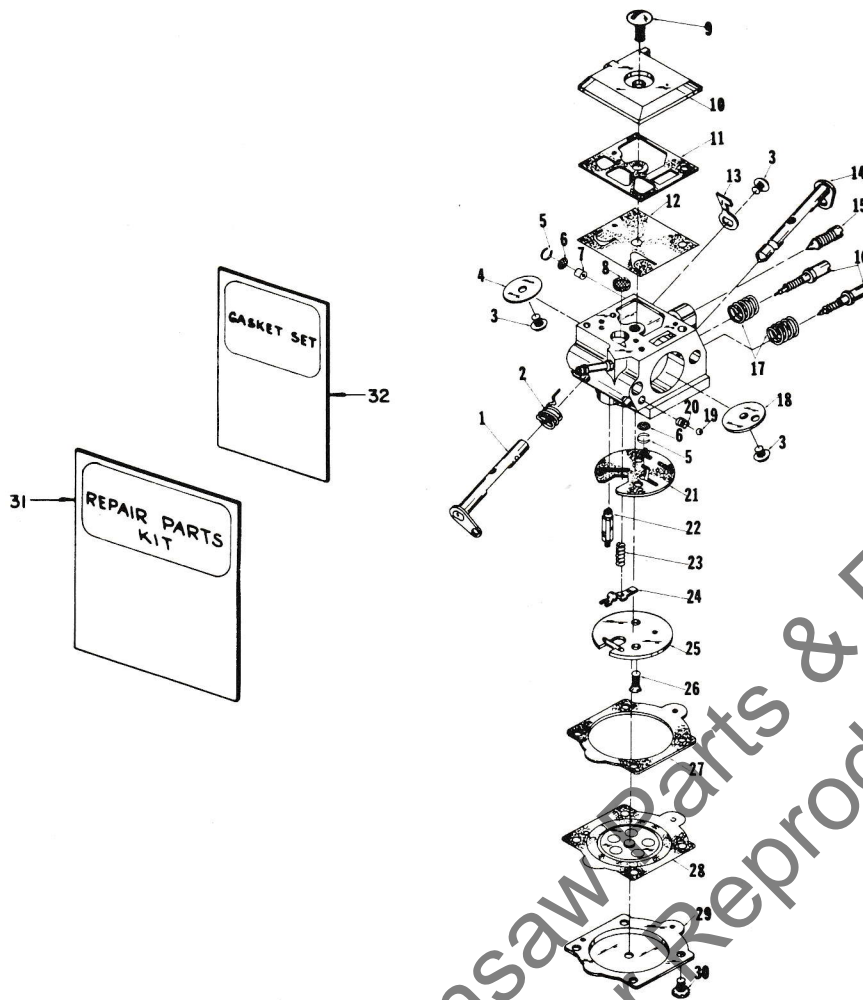
FIGURE 4

No.	Description	Part No.	Qty.	No.	Description	Part No.	Qty.
1	CAP-fuel filler Includes: VALVE-check (not shown)	A-65283-A 63718	1	28	GASKET-check valve	65144	1
2	GASKET-cap fuel filler	58957	1	29	SCREW-cam	65136	1
3	RETAINER-fuel cap	68751	1	30	GASKET	65145	1
4	CAP-oil filler (vented) Includes: VALVE-check (not shown)	A-65284-A 63718	1	31	SEAL	65142	1
5	"O" RING	65133	1	32	WORM-oil pump	65047-A	1
6	RETAINER-oil cap	68750	1	33	SCREW-pan, 8-32 x 3/4	80567	3
7	KIT-spiked bumper Includes: WASHER-lock #10	A-65181 83006-1	1	34	WASHER-thrust (outer)	65027	1
8	WASHER-lock #10	83006-1	2	35	RACE-inner	65746	1
9	NUT-hex, 10-32	81010-1	2	36	BEARING-needle	64124	1
10	SCREW-flat, 10-32 x 5/8	80035	2	37	SPROCKET-splined	OM-68210	1
11	HANDLE BAR-flush cut HANDLE BAR-full wrap-around	A-65294-1 A-68469-2	1	38	HUB & DRUM	A-65987	1
12	SCREW-socket, 10-32 x 7/8	82169	1	39	WASHER-thrush (inner)	65024-1	1
13	BRACKET-handle bar	65035-3	1	40	SHOE-clutch	65892	3
14	GROMMET-handle bar	64473	2	41	SPRING-clutch	65217	3
15	SCREW-shoulder	64613-A	2	42	PLATE-clutch	65146-1	1
16	MOUNT-shock	65111	1	43	NUT-hex 5/16 x 18	81196	2
17	PLATE-handle bar bracket	65032	1	44	SPRING	67943	1
18	PLATE-handle bar	65670	2	45	KNOB	67948-2	1
19	PAD-rubber	65124	2	*46	SCREW-set, 6-32 x 3/16	82214	1
20	GROMMET	65122	2	*47	LABEL-chain tension instruction	68760	1
21	SCREW-shoulder	65121	2	48	COVER-drivecase	A-68356	1
22	PUMP-automatic oil Includes: SCREW-pan, 4-40 x 1/4	A-65212 80919	1	49	Includes: BUSHING-cam	67938	1
23	SCREW-pan, 4-40 x 1/4	80919	2	50	CAM	67844	1
24	"O" RING	59074	2	51	COVER-cam	67941	1
25	BALL	65225	1	52	PLATE-guide bar (outer)	67940-2	1
26	CAP-check valve Includes: SPRING-check valve	A-68207 65017	1	53	SCREW-flat hd., 6-32 x 3/8	80451	2
27	SPRING-check valve	65017	1	54	BLOCK-guide bar	67942	1
				55	GUIDE BAR ASSEMBLY (15 inch)	TR-15503	1
				56	Includes: PIN-guide bar	67944	1
					GUIDE BAR ASSEMBLY (19 inch)	TR-19503	1
					Includes: PIN-guide bar	67944	1
				57	PLATE-guide bar (inner)	67939-1	1

* Denotes new parts

ALWAYS FURNISH MODEL AND SERIAL NUMBER WHEN ORDERING PARTS.

E-Z 250 AUTOMATIC



A-68415

HDC-4

No.	Description	Part No.	Qty.	No.	Description	Part No.	Qty.
1	SHAFT-throttle	67362	1	18	VALVE-choke	67365	1
† 2	SPRING-throttle return	67376	1	† 19	BALL-choke friction	60051	1
† 3	SCREW-valve	67372	3	† 20	SPRING-choke friction	64238	1
4	VALVE-throttle	67363	1	‡ 21	GASKET-circuit	67367	1
† 5	RING-screen retaining	67360	2	† 22	VALVE-inlet needle	64229	1
† 6	SCREEN-check valve	67381	2	† 23	SPRING-metering lever	67378	1
7	JET-limiting	68461	1	† 24	LEVER-metering	67383	1
† 8	SCREEN-fuel inlet	64243	1	25	PLATE-circuit	67382	1
9	SCREW-fuel pump cover	67374	1	26	SCREW-circuit plate	67375	2
10	COVER-fuel pump	67361	1	‡ 27	GASKET-metering diaphragm	64231	1
‡ 11	GASKET-fuel pump	67368	1	† 28	DIAPHRAGM-metering	67371	1
† 12	DIAPHRAGM-fuel pump	67370	1	29	COVER-metering diaphragm	64224	1
13	STOP-throttle	67366	1	30	SCREW-metering cover	64689	4
14	SHAFT-choke	67364	1	31	REPAIR KIT	67384	1
15	SCREW-idle adjustment	67373	1	† 32	GASKET SET	67369	1
† 16	NEEDLE-idle adjustment	67379	2		REPAIR KIT-check valve	65386	1
† 17	SPRING-needle adjusting	67377	2				

† Indicates contents of Repair Kit #67384

‡ Indicates contents of Gasket Set

Tools

A-24290	BRACKET-rotor remover
A-24060	WRENCH-clutch (spanner)
23136-1	BODY-assembling fixture
24295	COLLAR-bearing assembling
24291	SLEEVE-seal (drivecase)
24297	SLEEVE-seal (crankcase)
24299	ANVIL-crankshaft installation
24300	SLEEVE-crankshaft bearing
24292	PLUG-seal removal
24298	PLUG-bearing and seal
24320	BIT-#3 pozidriv
A-24309	JACKSCREW
24471	WRENCH-hex soc. (.062)
A-24284	WRENCH-combination
23756	PLUG-needle bearing assembly
24294	PLUG-needle bearing assembly

Accessories

A-65256	SPARK ARRESTOR ASSEMBLY
A 24335-A	STARTING ROPE KIT
A-24336	FILTER KIT
A-24338	FASTENERS KIT
A-24365-A	IGNITION KIT
A-67947	HEAT EXCHANGER KIT
A-65275	MUFFLER (baffle type)
24352	COMPOUND-sealing (Duxseal)
A-24481	IGNITION KIT (Wico)

Paint

23475	SPRAY CAN-red
22772	SPRAY CAN-black

Leon's Chainsaw Parts & Repair
Do Not Sell or Reproduce

Homelite Division of Textron Inc.
P.O. Box 7047
14401 Carowinds Boulevard
Charlotte, N.C. 28217

R1173YX

HOMELITE **TEXTRON**

Homelite Division of Textron Inc.