

PARTS LIST

HOMELITE®

Leon's Chainsaw Parts & Repair
Do Not Sell or Reproduce

E-Z 250
AUTOMATIC
CHAIN SAW

HOMELITE®

Extron
DIVISION

PORT CHESTER, N.Y. U.S.A.

PRICE .25

PART NO. 2 4 4 7 8

E-Z 250 AUTOMATIC

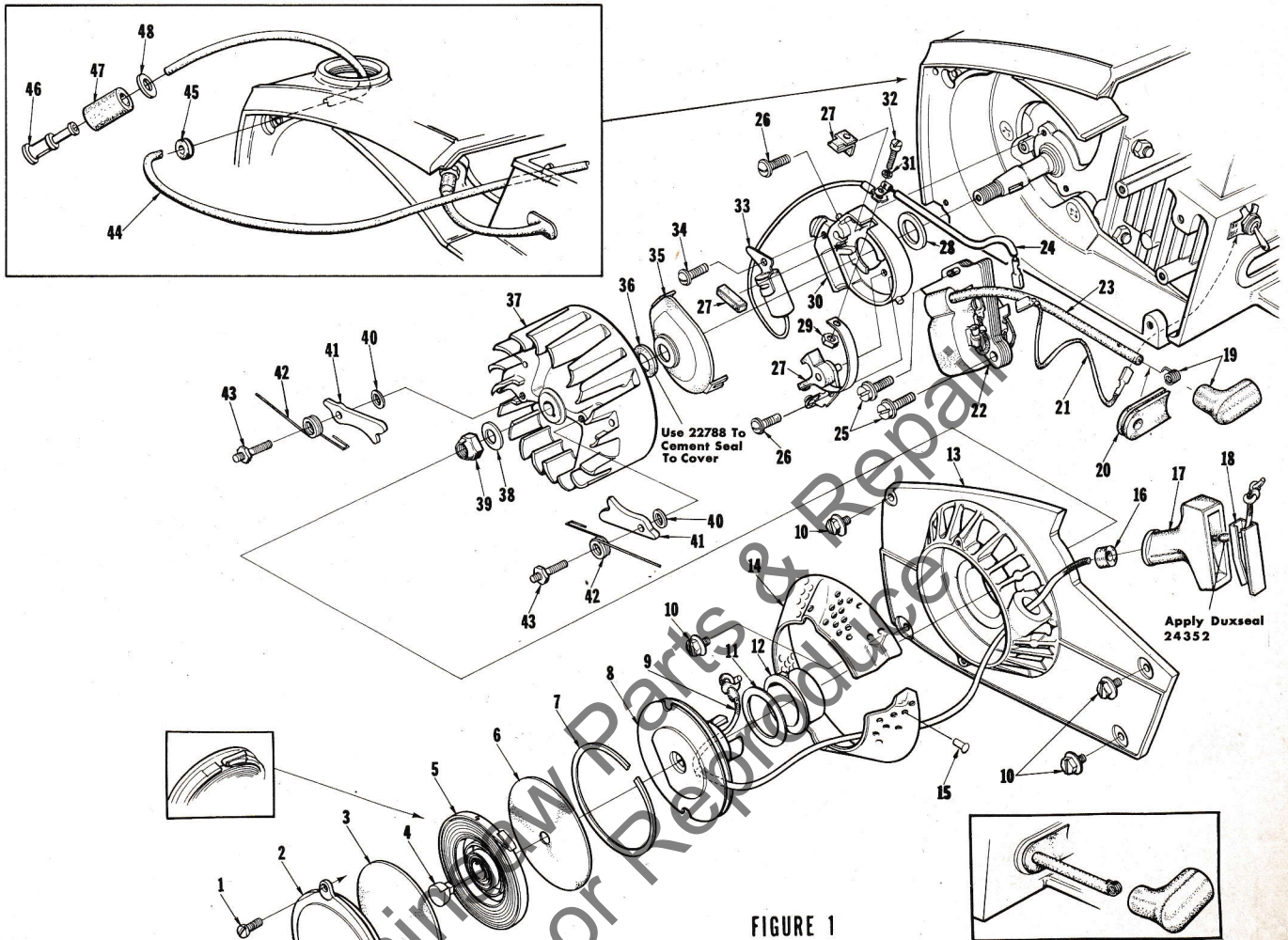


FIGURE 1

No.	Description	Part No.	Qty.	No.	Description	Part No.	Qty.
1	SCREW-pan, 8-32 x 3/8	80577	2	25	SCREW-coil core	64021	2
2	COVER-starter	65095-2	1	26	SCREW-pan, 6-32 x 3/8	80571	2
3	SHIELD-spring (inner)	65113	1	27	POINTS-breaker	A-65203-A	1
4	LOCK-spring	65102	1	28	Includes: SEAL-felt	65209	1
5	SPRING-rewind	65107	1	29	NUT-hex	65207	1
6	SHIELD-spring (outer)	65114	1	30	BOX-breaker	65206-A	1
7	RING-retaining	65125	1	31	WASHER-lock #6	83004-1	1
8	PULLEY & CUP ASSEMBLY	A-65170	1	32	SCREW-hex, 6-32 x 7/16	67628	1
9	ROPE-starter	65118	1	33	CONDENSER	65286	1
10	SCREW-hex, 10-32 x 5/8	80704	4	34	SCREW-pan, 6-32 x 1/2	80630	1
11	SHIELD-pulley	65103	1	35	COVER-breaker box	A-65210-A	1
12	BUSHING-starter cup	65116	1	36	Includes: SEAL-felt	65211	1
13	HOUSING-rewind starter	A-65222-1	1	37	ROTOR-magneto	65288	1
14	Includes: SCREEN-air inlet	65189	1	38	WASHER-flat, 5/16	84065-1	1
15	STUD-drive, #2	67191	3	39	NUT-hex, 5/16-24	81112	1
16	BUSHING-starter rope	65185	1	40	WASHER-starter pawl	65110	2
17	GRIP-starter rope	65183	1	41	PAWL-starter	65108	2
18	INSERT-rope retaining	65218	1	42	SPRING-starter pawl	65120	2
19	TERMINAL-spark plug	A-65198	1	43	STUD-starter pawl	65109	2
20	GROMMET-hi-tension lead	65135	1	44	LINE-fuel	A-68053	1
21	LEAD-ground	A-63939	1	45	Includes: GROMMET	68046	1
22	CORE & COIL	A-65289	1	46	FILTER-fuel	A-63920	1
23	Includes: LEAD-hi-tension	65205	1	47	Includes: FILTER-felt	64083-1	1
24	LEAD GROUP-primary	65291	1	48	WASHER	64182	1

E-Z 250 AUTOMATIC

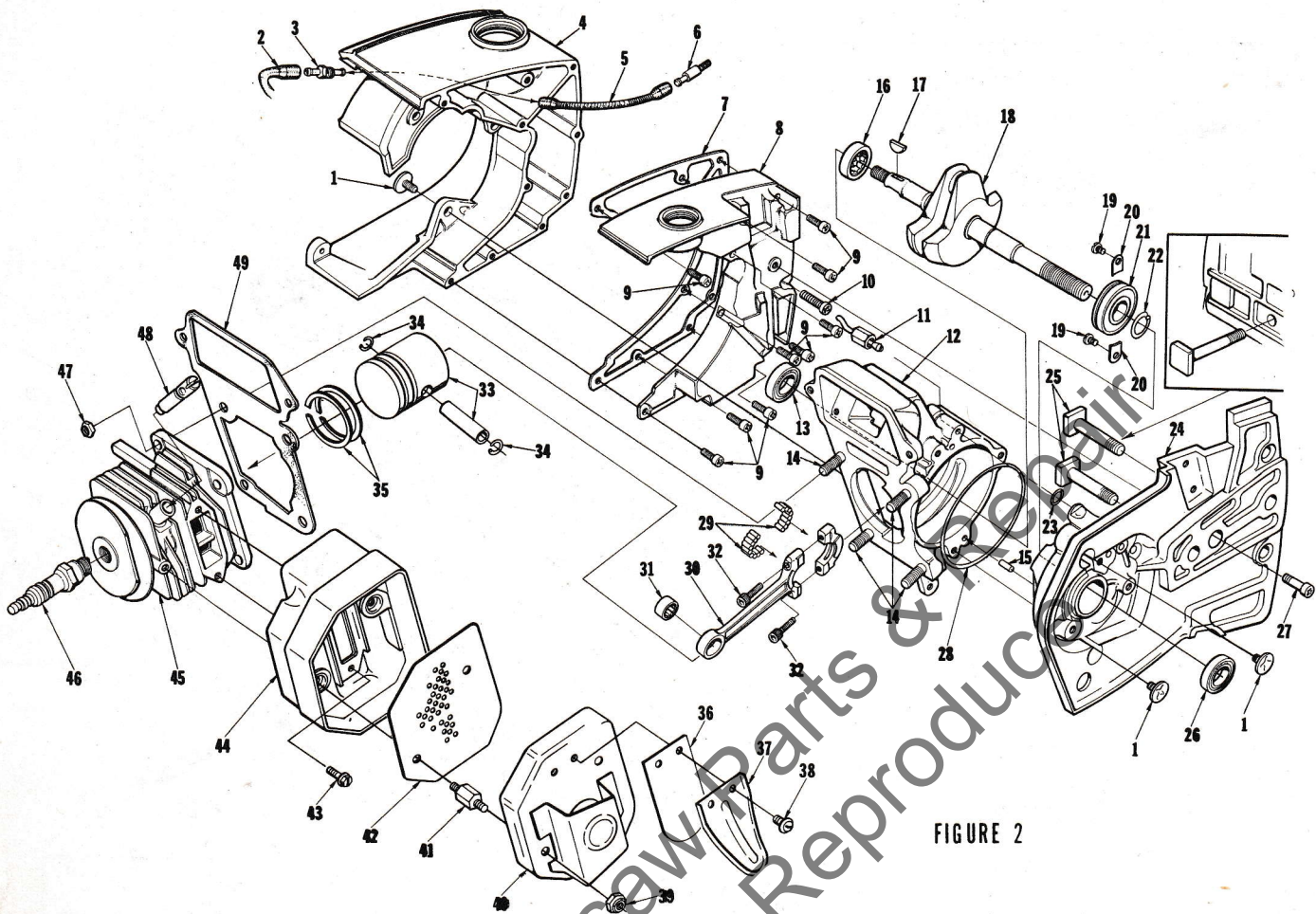


FIGURE 2

No.	Description	Part No.	Qty.	No.	Description	Part No.	Qty.
1	SCREW-retaining	65321	6	28	"O" RING	65127	1
2	LINE-oil	65137	1	*29	BEARING-needle (set of 28)	A-67971	1
3	FITTING-oil line	65138	1	*30	ROD-connecting	A-68051	1
4	TANK-fuel and oil	65037-2	1		Includes:		
5	LINE-oil (pickup)	58340-B	1	*31	BEARING-needle	68512	1
6	FILTER-oil	A-65172	1	32	SCREW-socket, 8-32 x 9/16	80805	2
7	GASKET-fuel and oil tank	65046	1	*33	PISTON & PIN	A-68487	1
8	COVER-fuel and oil tank	65115-2	1		Includes:		
9	SCREW-fil, 8-32 x 5/8	82146	9	34	RING-piston pin retaining	64813	2
10	SCREW-fil, 8-32 x 1-1/4	82152	1	*35	PISTON RING	68508	2
11	LINE-oil	A-65214	1	*	MUFFLER-reed	A-67926-C	1
12	CRANKCASE	A-65202	1		Includes:		
13	Includes: SEAL	65019	1	36	REED-muffler	67394	1
14	STUD-cylinder	55871	4	37	STOP-reed	67413-1A	1
15	PIN-dowel	65153	1	38	SCREW-pan, 8-32 x 1/4	80575	2
16	BEARING-roller	65179	1	39	NUT-flexlock, 10-32	81109-2	2
17	KEY-woodruff	65126	1	40	CAP-reed muffler	A-67922-1B	1
18	CRANKSHAFT	65006-2	1	41	STUD-muffler	68103-1	2
19	SCREW-bearing retaining	59704	2	42	BAFFLE-muffler	67736	1
20	WASHER-lock special	63905	2	43	SCREW-hex, 10-32 x 3/8	80870	3
21	BEARING-ball	65044-S	1	44	BODY-reed muffler	A-67733-1	1
22	RING-retaining	65045	1	*45	CYLINDER-(1-9/16" dia.)	A-67874-1	1
23	"O" RING	59074	1	46	SPARK PLUG	65130-S	1
*24	DRIVECASE	A-68489	1	47	NUT-hex, 1/4-28	81065-2	4
25	Includes: BOLT-guide bar	58753	2	48	VALVE-compression release	A-65184	1
26	SEAL	65019	1	49	GASKET-cylinder	65018	1
27	SCREW-fil, drivecase retainer	65157	1		* Denotes new parts		

E-Z 250 AUTOMATIC

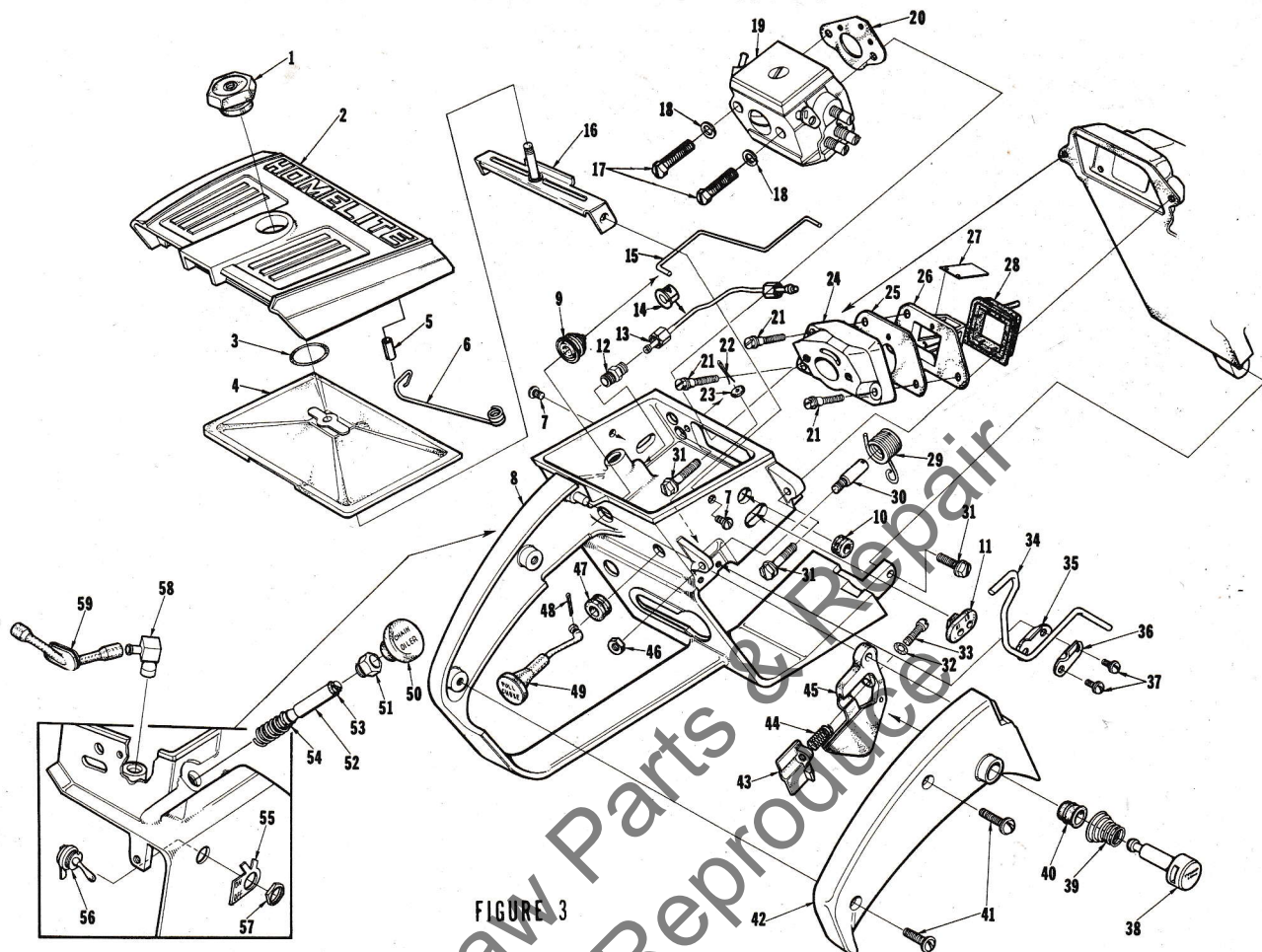


FIGURE 3

No.	Description	Part No.	Qty.	No.	Description	Part No.	Qty.
1	NUT-cover mounting	A-65272	1	30	POST-spring	65023	1
* 2	COVER-air filter	65096-5	1	31	SCREW-hex, 10-24 x 5/8	80676	3
3	RING-retaining	58319-A	1	32	"O" RING	65260	1
4	FILTER ELEMENT-air	A-65178	1	*33	SCREW-pan, 6-40 x 1	82198	1
* 5	PIN-roll, 3/16 x 5/16	68448	1	34	LEVER-release	65173	1
* 6	TACHOMETER-vibration arm	68113	1	35	PLATE-lever	65092	1
7	SCREW-pan, 8-32 x 3/8	80577	2	36	CLAMP-lever	65093	1
* 8	HANDLE-throttle	A-65215-D	1	37	SCREW-pan, 6-32 x 3/8	80571	2
	Includes:	663267A		38	PIN-throttle lock	65171-A	1
9	BOOT-throttle rod	67634	1	39	SPRING-throttle lock	64677	1
10	GROMMET-idle adjusting	68197	1	40	BUSHING	67752	1
11	GROMMET-"HI-LO"	68196	1	41	SCREW-pan, 8-32 x 1/2	80560	2
	LINE-fuel (not shown)	A-68053	1	42	COVER-throttle handle	65042-3A	1
	Includes: GROMMET (not shown)	68046	1	43	STOP-throttle adjustment	65147-A	1
12	VALVE-check (outlet)	A-65077	1	44	SPRING-throttle stop	65188	1
13	LINE-oil	A-65214	1	45	TRIGGER-throttle	65031	1
14	GROMMET-oil line	65085	1	46	NUT-hex, #6-32	81126	1
15	ROD-throttle	65056	1	47	GROMMET-choke	64862	1
16	BRACKET-air filter cover	A-65123	1	48	PIN-cotter	86324	1
17	SCREW-hex, 10-32 x 1-5/8	82165	2	49	ROD-choke	65072-1	1
18	WASHER-lock, #10	83046	2	50	BUTTON-oil pump	65084	1
*19	CARBURETOR	A-68415	1	51	NUT-plunger	65082	1
20	GASKET-carburetor	65016	1	52	PLUNGER-oil pump	A-68061-A	1
21	SCREW-shoulder	64349-A	3	53	Includes: "O" RING	59074	1
22	PIN-cotter	86301	1	54	"O" RING	58406	1
23	WASHER-felt	63290	1	55	PLATE-"On-Off"	63910	1
24	SPACER-reed valve	A-65154-1A	1	56	SWITCH-grounding	A-63938	1
25	GASKET-reed valve seat	65014	1	57	Includes: NUT-hex	72084-A1	1
26	SEAT-reed valve	65010	1	58	VALVE-check (inlet)	A-65076	1
27	REED-valve	65012-A	4	59	LINE-oil	65137	1
28	RETAINER-reed valve	65011-A	1				
29	SPRING-release valve	65174	1				

* Denotes new parts

E-Z 250 AUTOMATIC

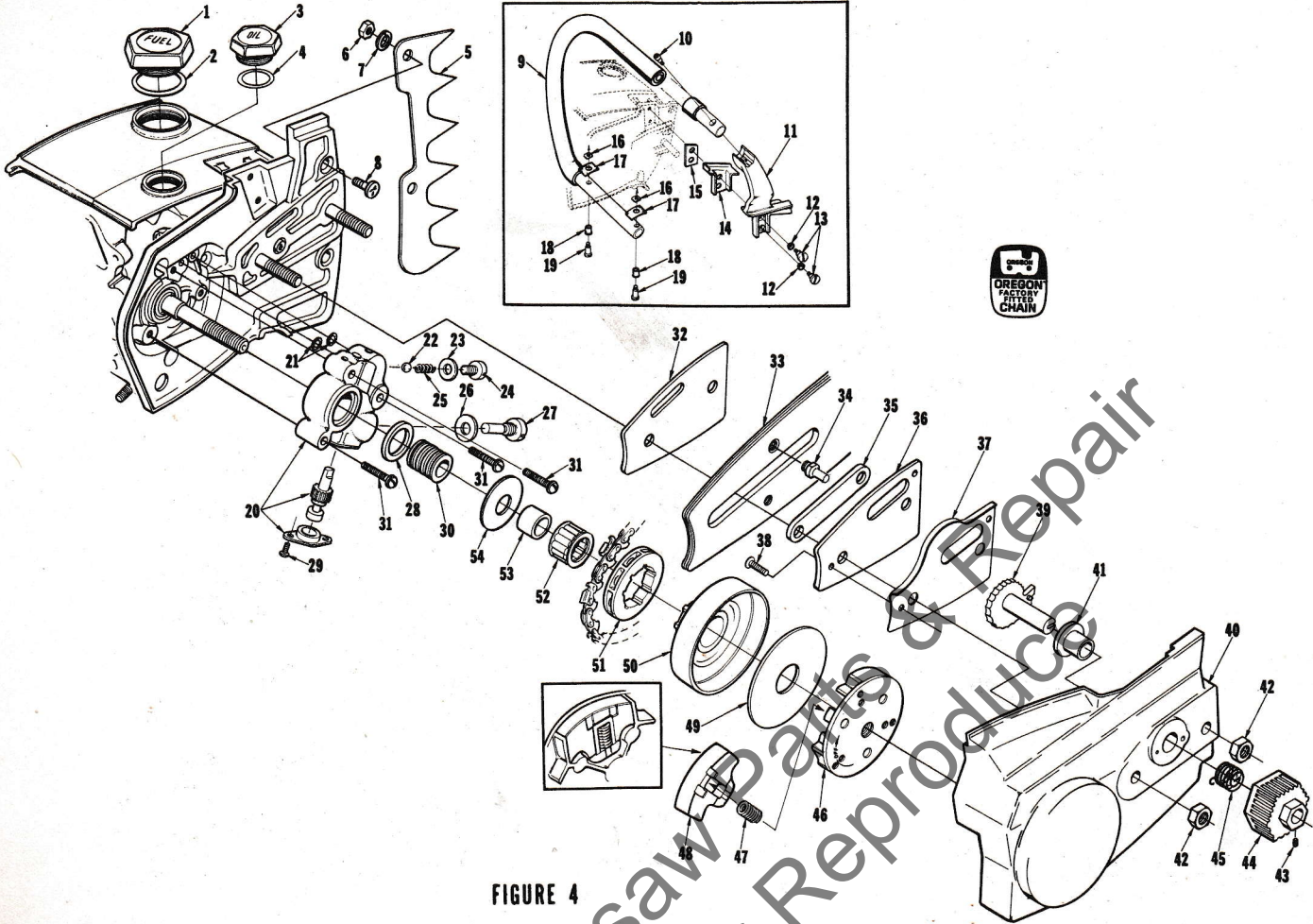


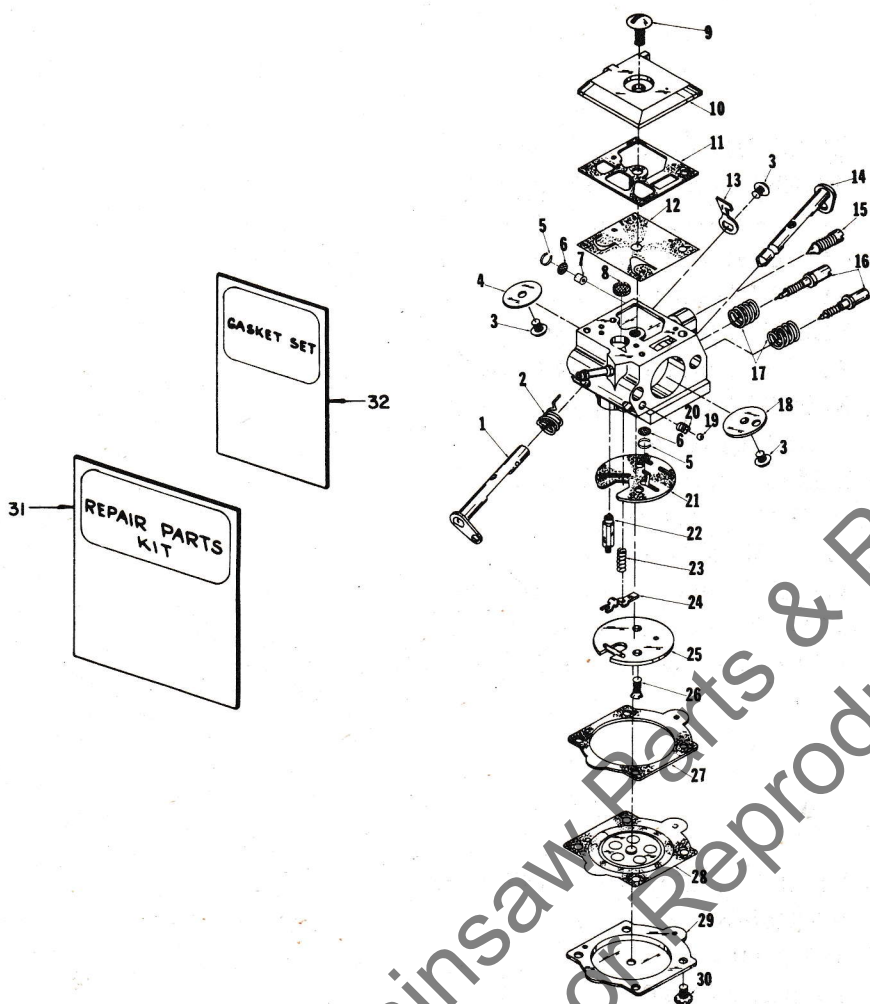
FIGURE 4

No.	Description	Part No.	Qty.	No.	Description	Part No.	Qty.
* 1	CAP-fuel filler	A-65283-A	1	27	SCREW-cam	65136	1
	Includes: VALVE-check (not shown)	63718	1	28	SEAL	65142	1
2	GASKET-cap fuel filler	68957	1	29	SCREW-pan, 4-40 x 1/4	80919	2
*	RETAINER-fuel cap (not shown)	68751	1	30	WORM-oil pump	65047-A	1
* 3	CAP-oil filler (vented)	A-65284-A	1	31	SCREW-pan, 8-32 x 3/4	80567	3
	Includes: VALVE-check (not shown)	63718	1	*32	PLATE-guide bar (inner)	67939-1	1
4	"O" RING	65133	1	*33	GUIDE BAR ASSEMBLY (15 inch)	TR-15503	1
*	RETAINER-fuel cap(not shown)	68750	1	*34	Includes: PIN-guide bar	67944	1
5	KIT-spiked bumper	A-65181	1	*	GUIDE BAR ASSEMBLY (19 inch)	TR-19503	1
6	Includes: NUT-hex, 10-32	81010-1	2	*	Includes: PIN-guide bar	67944	1
7	WASHER-lock, #10	83006-1	2	*35	BLOCK-guide bar	67942	1
8	SCREW-flat, 10-32 x 5/8	80035	2	*36	PLATE-guide bar (outer)	67940-2	1
* 9	HANDLE BAR-flush cut	A-65294-1	1	*37	COVER-cam	67941	1
*	HANDLE BAR-full wrap-around	A-68469-2	1	38	SCREW-flat hd., 6-32 x 3/8	80451	2
10	SCREW-socket, 10-32 x 7/8	82169	1	*39	CAM	67844	1
11	BRACKET-handle bar	65035-3	1	*40	COVER-drivecase	A-68356	1
12	GROMMET-handle bar	64473	2	*41	Includes: BUSHING-cam	67938	1
13	SCREW-shoulder	64613-A	2	42	NUT-hex, 5/16 x 18	81196	2
14	MOUNT-shock	65111	1	43	SCREW-set, 6-32 x 1/8	80632	1
15	PLATE-handle bar bracket	65032	1	*44	KNOB	67948-2	1
16	PLATE-handle bar	65670	2	*45	SPRING	67943	1
17	PAD-rubber	65124	2	46	PLATE-clutch	65146-1	1
18	GROMMET	65122	2	47	SPRING-clutch	65217	3
19	SCREW-shoulder	65121	2	48	SHOE-clutch	65892	3
20	PUMP-automatic oil	A-65212	1	49	WASHER-thrust (outer)	65027	1
	Includes:			50	HUB & DRUM	A-65987	1
21	"O" RING	59074	2	51	SPROCKET-splined	OM-68210	1
22	BALL	65225	1	52	BEARING-needle	64124	1
23	GASKET-check valve	65144	1	53	RACE-inner	65746	1
24	CAP-check valve	A-68207	1	54	WASHER-thrust (inner)	65024-1	1
25	Includes: SPRING-check valve	65017	1				
26	GASKET	65145	1				

* Denotes new parts

E-Z 250 AUTOMATIC

A-68415



HDC-4

No.	Part No.	Description	Qty.	No.	Part No.	Description	Qty.
1	67362	SHAFT-throttle	1	†17	67377	SPRING-needle adjusting	2
† 2	67376	SPRING-throttle return	1	18	67365	VALVE-choke	1
† 3	67372	SCREW-valve	3	†19	60051	BALL-choke friction	1
4	67363	VALVE-throttle	1	†20	64238	SPRING-choke friction	1
† 5	67360	RING-screen retaining	2	‡21	67367	GASKET-circuit	1
† 6	67381	SCREEN-check valve	2	†22	64229	VALVE-inlet needle	1
* 7	68461	JET-limiting	1	†23	67378	SPRING-metering lever	1
† 8	64243	SCREEN-fuel inlet	1	†24	67383	LEVER-metering	1
9	67374	SCREW-fuel pump cover	1	25	67382	PLATE-circuit	1
10	67361	COVER-fuel pump.	1	26	67375	SCREW-circuit plate	2
‡11	67368	GASKET-fuel pump	1	‡27	64231	GASKET-metering diaphragm	1
†12	67370	DIAPHRAGM-fuel pump	1	†28	67371	DIAPHRAGM-metering	1
13	67366	STOP-throttle	1	29	64224	COVER-metering diaphragm	1
14	67364	SHAFT-choke	1	30	64689	SCREW-metering cover	4
15	67373	SCREW-idle adjustment	1	31	67384	REPAIR KIT	1
†16	67379	NEEDLE-idle adjustment	2	†32	67369	GASKET SET	1
					65386	REPAIR KIT-check valve	1

* Denotes new parts

‡ Indicates contents of Gasket Set

† Indicates contents of Repair Kit #67384

E-Z 250 AUTOMATIC

Tools

A- 24290	BRACKET-rotor remover
A- 24060	WRENCH-clutch (spanner)
23136-1	BODY-assembling fixture
24295	COLLAR-bearing assembling
24291	SLEEVE-seal (drivecase)
24297	SLEEVE-seal (crankcase)
24299	ANVIL-crankshaft installation
24300	SLEEVE-crankshaft bearing
24292	PLUG-seal removal
24298	PLUG-bearing and seal
24320	BIT-#3 pozidriv
A- 24309	JACKSCREW
* 24471	WRENCH-hex soc. (.062)
A- 24284	WRENCH-combination
23756	PLUG-needle bearing assembly

Accessories

A- 65256	SPARK ARRESTOR ASSEMBLY
A- 24335	STARTING ROPE KIT
A- 24336	FILTER KIT
A- 24337-A	IGNITION KIT
A- 24338	FASTENERS KIT
A- 24365-A	IGNITION KIT
A- 68001	SPARK ARRESTOR ASSEMBLY-reed muffler
A- 67947	HEAT EXCHANGER KIT
A- 65275	MUFFLER (baffle type)
24352	COMPOUND-sealing (Duxseal)

Paint

23475	SPRAY CAN-red
22772	SPRAY CAN-black

* Denotes new parts

NUMERICAL PARTS LIST E-Z 250 AUTOMATIC

Part No.	Description	Qty.	Part No.	Description	Qty.	Part No.	Description	Qty.	Part No.	Description	Qty.
*TR 15503	Guide Bar (15 inch)	1	65024-1	Washer	1	65188	Spring	1	*67844	Cam	1
*TR 19503	Guide Bar (19 inch)	1	65027	Washer	1	65189	Screen-air	1	*A-67874-1	Cylinder	1
22772	Spray Can-black	1	65031	Trigger	1	A-65198	Terminal	1	A-67922-1B	Cap-muffler shield	1
23136-1	Body	1	65032	Plate	1	A-65202	Crankcase	1	*A-67926-C	Muffler-reed	1
23475	Spray Can-red	1	65035-3	Bracket	1	A-65203	Points	1	*67938	Bushing-cam	1
23756	Plug-needle bearing	1	65037-2	Tank	1	65205	Lead	1	*67939-1	Plate-inner	1
A-24060	Wrench	1	65042-3A	Cover	1	65206-A	Box-breaker	1	*67940-2	Plate-outer	1
A-24284	Wrench	1	65044-S	Bearing	1	65207	Nut	1	*67941	Cover-cam	1
A-24290	Bracket	1	65045	Ring	1	65209	Seal-felt	1	*67942	Block-guide bar	1
24291	Sleeve-seal	1	65046	Gasket	1	A-65210-A	Cover	1	*67943	Spring	1
24292	Plug-seal	1	65047-A	Worm	1	65211	Seal-felt	1	*67944	Pin-guide bar	2
24295	Collar-bearing	1	65056	Rod-throttle	1	A-65212	Pump	1	A-67947	Kit-heat exchanger	1
24297	Sleeve	1	65072-1	Rod-choke	1	A-65214	Line-oil	1	*67948-2	Knob	1
24298	Plug	1	A-65076	Valve-inlet	1	*A-65215-D	Handle-throttle	1	*A-67971	Bearing (set of 28)	1
24299	Anvil	1	A-65077	Valve-outlet	1	65217	Spring-clutch	3	A-68001	Spark Arrestor	1
24300	Sleeve	1	65082	Nut-plunger	1	65218	Insert-rope	1	68046	Grommet	1
A-24309	Jackscrew	1	65084	Button	1	A-65222-1	Housing	1	*A-68051	Rod-connecting	1
24320	Bit-#3	1	65085	Grommet	1	65225	Ball	1	A-68053	Line-fuel	1
A-24335	Kit-starting rope	1	65092	Plate-lever	1	A-65256	Spark Arrestor	1	A-68061-A	Plunger-oil pump	1
A-24336	Kit-filter	1	65093	Clamp-lever	1	65260	"O" Ring	1	68103-1	Stud-muffler	2
A-24337-A	Kit-ignition	1	65095-2	Cover-starter	1	A-65272	Nut	1	*68113	Tachometer-arm	1
A-24338	Kit-fasteners	1	*65096-5	Cover	1	A-65275	Muffler	1	68196	Grommet-Hi-Lo	1
24352	Compound-sealing	1	65102	Lock-spring	1	*A-65282-A	Cap-fuel	1	68197	Grommet	1
A-24365-A	Kit-ignition	1	65103	Shield-pulley	1	*A-65284-A	Cap-oil	1	A-68207	Cap-check valve	1
*24471	Wrench	1	65107	Spring-rewind	1	65286	Condenser	1	OM-68210	Sprocket	1
55871	Stud	4	65108	Pawl-starter	2	65288	Rotor	1	*A-68356	Cover-drivecase	1
58319-A	Ring-retaining	1	65109	Stud-pawl	2	A-65289	Coil & Core	1	*A-68415	Carburetor	1
58340-B	Line	1	65110	Washer-pawl	2	65291	Lead-primary	1	*68448	Pin-roll	1
58406	"O" Ring	1	65111	Mount-shock	1	*A-65294-1	Handle Bar	1	*68461	Jet	1
58753	Bolt-guide bar	2	65113	Shield-inner	1	65321	Screw	6	*A-68469-2	Handle Bar	1
58957	Gasket	1	65114	Shield-outer	1	65386	Kit-repair	1	*A-68487	Piston & Pin	1
59074	"O" Ring	4	65115-2	Cover	1	65670	Plate	2	*A-68489	Drivecase	1
59704	Screw-retaining	2	65116	Bushing	1	65746	Race-inner	1	*68508	Piston Ring	2
60051	Ball	1	65118	Rope-starter	1	65892	Shoe-clutch	3	*68512	Bearing-needle	1
63290	Washer-felt	1	65120	Spring-pawl	2	A-65987	Hub & Drum	1	72084-A1	Nut-hex	1
63718	Valve-check	2	65121	Screw	2	67191	Stud-drive #2	3	FASTENING PARTS		
63905	Washer	2	65122	Grommet	2	67360	Ring	2	80035	10-32 x 5/8	2
63910	Plate-On-Off	1	A-65123	Bracket	1	67361	Cover	1	80451	6-32 x 3/8	2
A-63920	Filter-fuel	1	65124	Pad-rubber	2	67362	Shaft-throttle	1	80560	8-32 x 1/2	2
A-63938	Switch	1	65125	Ring-retaining	1	67363	Valve	1	80567	8-32 x 3/4	3
A-63939	Lead-ground	1	65126	Key	1	67364	Shaft	1	80571	6-32 x 3/8	4
64021	Screw	2	65127	"O" Ring	1	67365	Valve	1	80575	8-32 x 1/4	2
64083-1	Filter-fuel	1	65130-S	Spark Plug	1	67366	Stop	1	80577	8-32 x 3/8	4
64124	Bearing-needle	1	65133	"O" Ring	1	67367	Gasket	1	80630	6-32 x 1/2	1
64182	Washer	1	65135	Grommet	1	67368	Gasket	1	80632	6-32 x 1/8	1
64224	Cover	1	65136	Screw-cam	1	67369	Gasket Set	1	80676	12-24 x 5/8	3
64229	Valve	1	65137	Line-oil	1	67370	Diaphragm	1	80704	10-32 x 5/8	4
64231	Gasket	1	65138	Fitting	1	67371	Diaphragm	1	80805	8-32 x 1/2	2
64238	Spring	1	65142	Seal	1	67372	Screw	3	80870	10-32 x 3/8	3
64243	Screen	1	65144	Gasket	1	67373	Screw	1	80919	4-40 x 1/4	2
64249-A	Screw-shoulder	3	65145	Gasket	1	67374	Screw	1	81010-1	Nut-10-32	2
64473	Grommet	2	65146-1	Plate-clutch	1	67375	Screw	2	81065-2	Nut-hex, 1/4-28	4
64613-A	Screw-shoulder	2	65147-A	Stop	1	67376	Spring	1	81109-2	Nut-10-32	2
64677	Spring	1	65153	Pin-dowel	1	67377	Spring	2	81112	Nut-hex, 5/16-24	1
64689	Screw-assembly	4	A-65154-1A	Spacer	1	67378	Spring	1	81126	Nut-hex, #6-32	1
64813	Ring-retaining	2	65157	Screw	1	67379	Needle	2	81196	Nut-5/16-18	2
64862	Grommet-choke	1	A-65170	Pulley & Cup	1	67381	Screen	2	82146	8-32 x 5/8	9
65006-2	Crankshaft	1	65171-A	Pin	1	67382	Plate	1	82152	8-32 x 1-1/4	1
65010	Seat-reed valve	1	A-65172	Filter-oil	1	67383	Lever	1	82165	10-32 x 1-5/8	2
65011-A	Retainer	1	65173	Lever	1	67384	Kit-repair	1	82169	10-32 x 7/8	1
65012-A	Reed-valve	4	65174	Spring	1	67394	Reed-muffler	1	*82198	6-40 x 1	1
65014	Gasket	1	A-65178	Filter	1	67413-1A	Stop-reed	1	83004-1	Washer-lock, #6	1
65016	Gasket	1	65179	Bearing	1	67628	Screw	1	83006-1	Washer-#10	2
65017	Spring-check valve	1	A-65181	Kit-bumper	1	67634	Boot	1	83046	Washer-#10	2
65018	Gasket-cylinder	1	65183	Grip	1	A-67733-1	Body-muffler	1	84065-1	Washer-flat, 5/16	1
65019	Seal	2	A-65184	Valve	1	67736	Baffle-muffler	1	86301	Pin-cotter	1
65023	Post-spring	1	65185	Bushing	1	67752	Bushing	1	86324	Pin-cotter	1
			*68750	Retainer	1	*68751	Retainer	1			

* Denotes new parts

Leon's Chainsaw Parts & Repair
Do Not Sell or Reproduce



A textron
DIVISION

PORT CHESTER, N.Y. U.S.A.