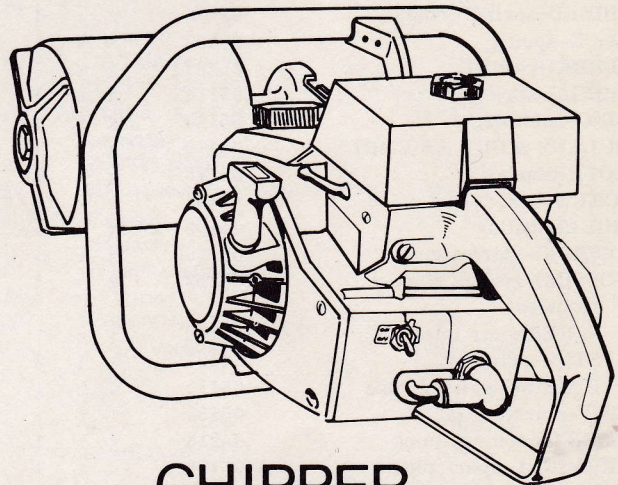
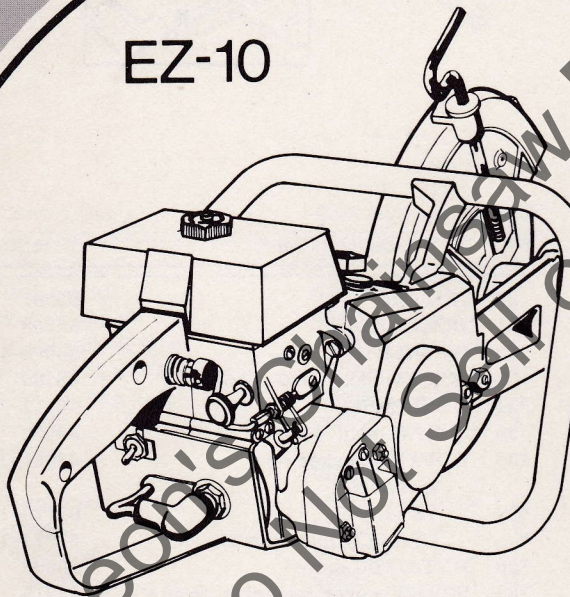


PRICE .35

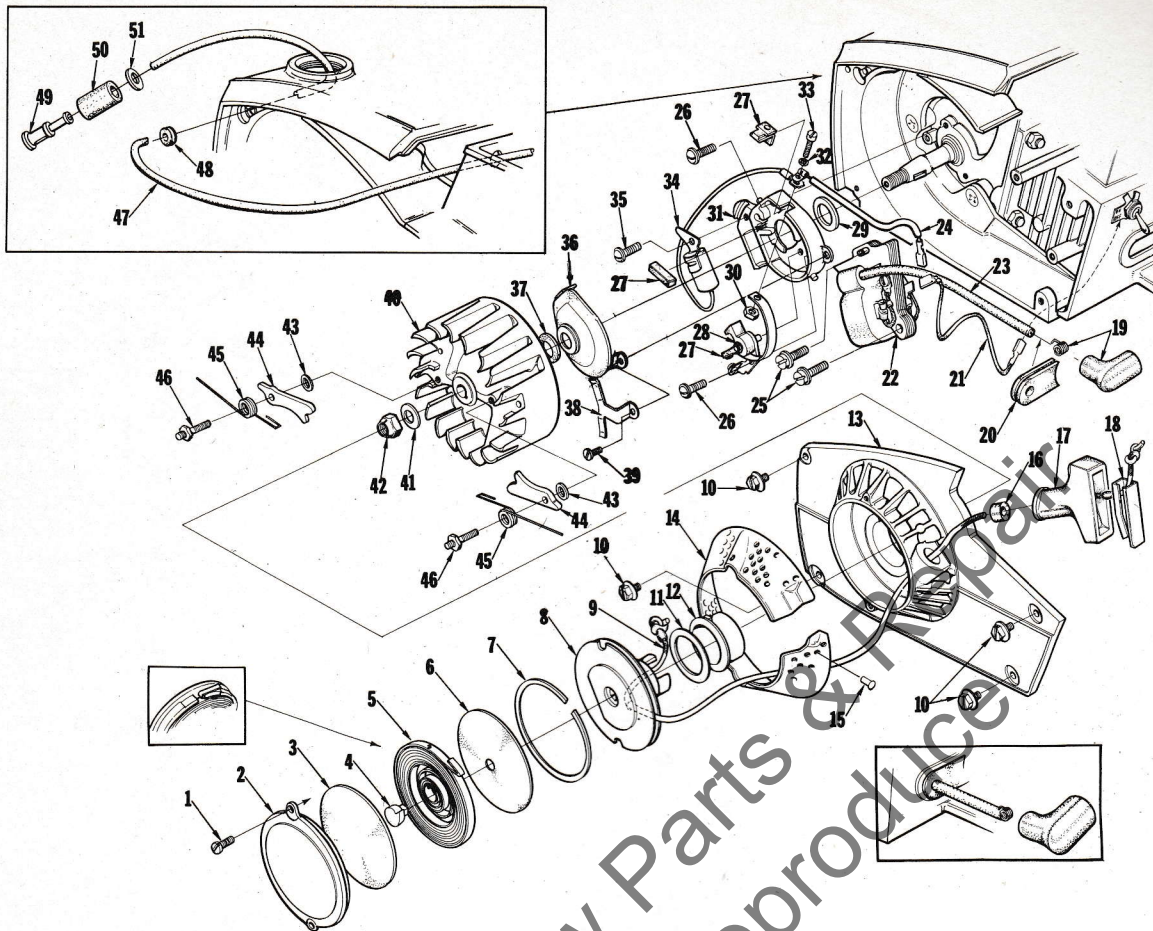
PARTS LIST

# HOMELITE®

EZ-10

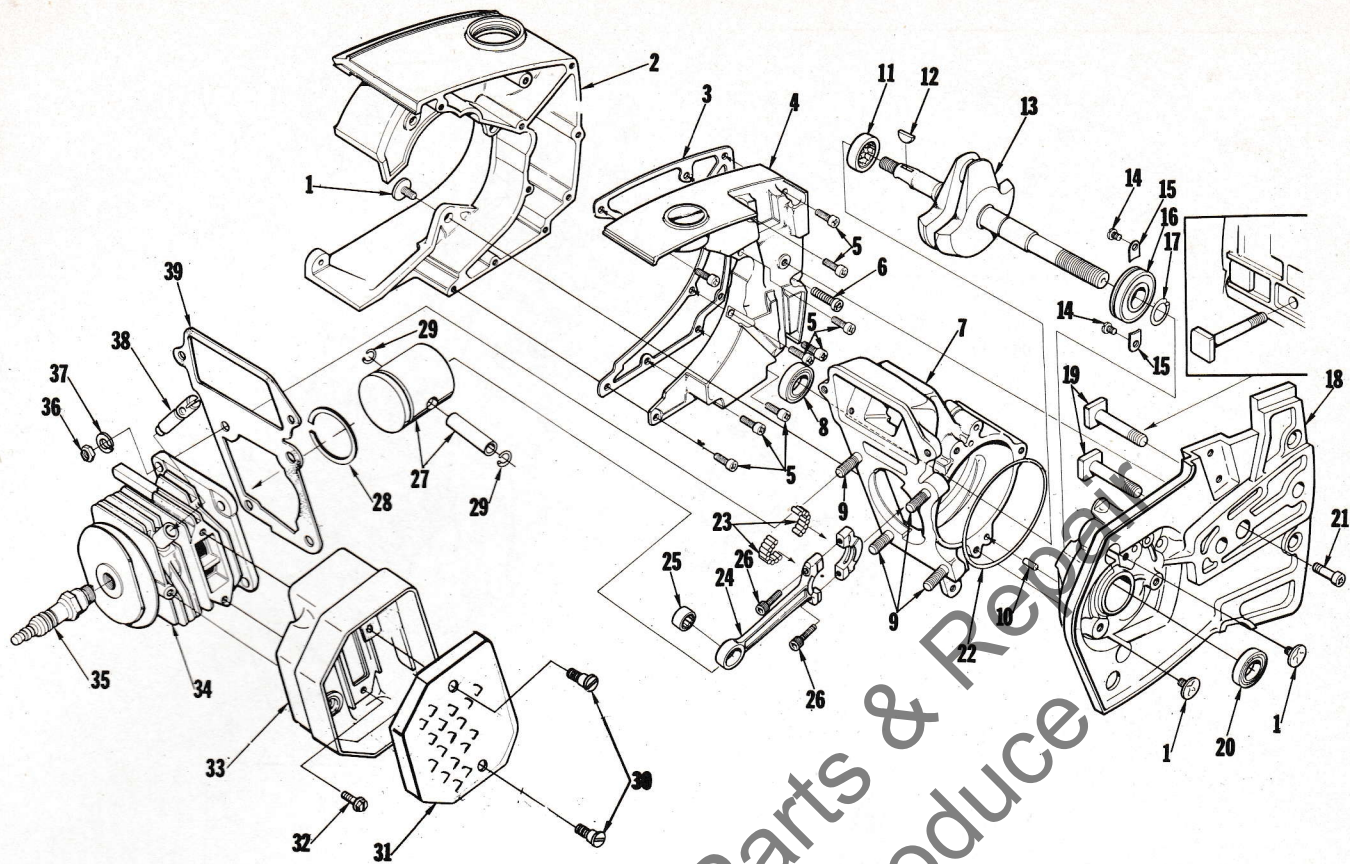


CHIPPER



No.	Description	Part No.	EZ-10 CHIPPER Qty.	No.	Description	Part No.	EZ-10 CHIPPER Qty.
1	SCREW-pan, 8-32 x 3/8	80577	x x 2	30	NUT-hex	65207	x x 1
2	COVER-starter	65095-2	x x 1	*31	BOX-breaker	68708	x x 1
3	SHIELD-spring (inner)	65113	x x 1	32	WASHER-lock, #6	83004-1	x x 1
4	LOCK-spring	65102	x x 1	*33	SCREW-hex, 6-32 x 1/2	68700	x x 1
5	SPRING-rewind	65107	x x 1	*34	CONDENSER	68711	x x 1
6	SHIELD-spring (outer)	65114	x x 1	35	SCREW-pan, 6-32 x 1/2	80630	x x 1
7	RING-retaining	65125	x x 1	*36	COVER-breaker box	A-68704-1	x x 1
8	PULLEY & CUP ASSEMBLY	A-65170	x x 1		Includes:		
9	ROPE-starter	65118	x x 1	*37	SEAL-felt	68773-1	x x 1
10	SCREW-hex, 10-32 x 5/8	80704	x x 4	*	GASKET-(not shown)	68774-1	x x 1
11	SHIELD-pulley	65103	x x 1	*38	RETAINER-cover	50690	x x 1
12	BUSHING-starter cup	65116	x x 1	*39	SCREW-cover mounting, 5-40 x 3/8	68715	x x 2
13	HOUSING-rewind starter	A-65222-1	x x 1	*40	ROTOR-magneto	68701	x x 1
	Includes:			41	WASHER-flat, 5/16	84065-1	x x 1
14	SCREEN-air inlet	65189	x x 1	42	NUT-hex, 5/16-24	81112	x x 1
15	STUD-drive, #2	67191	x x 3	43	WASHER-starter pawl	65110	x x 2
16	BUSHING-starter rope	65185	x x 1	44	PAWL-starter	65108	x x 2
17	GRIP-starter rope	65183	x x 1	45	SPRING-starter pawl	65120	x x 2
18	INSERT-rope retaining	65218	x x 1	46	STUD-starter pawl	65109	x x 2
19	TERMINAL-spark plug	A-65198	x x 1	47	LINE-fuel	A-68053	x x 1
20	GROMMET-hi-tension lead	65135	x x 1		Includes:		
21	LEAD-ground	A-63939	x x 1	48	GROMMET	68046	x x 1
*22	CORE & COIL	68716	x x 1	49	FILTER-fuel	A-63920	x x 1
23	LEAD-hi-tension	65205	x x 1	50	Includes: FILTER-felt	64083-1	x x 1
*24	LEAD GROUP-primary	68712	x x 1	51	WASHER	64182	x x 1
25	SCREW-coil core	64021	x x 2				
26	SCREW-pan, 6-32 x 3/8	80571	x x 2				
*27	POINTS-breaker	A-68710	x x 1				
	Includes:						
	LOCK-breaker arm (not shown)	28008	x x 1				
28	WASHER-thrust	28028	x x as req'd				
*29	SEAL-felt	68705	x x 1				

\* Denotes new parts



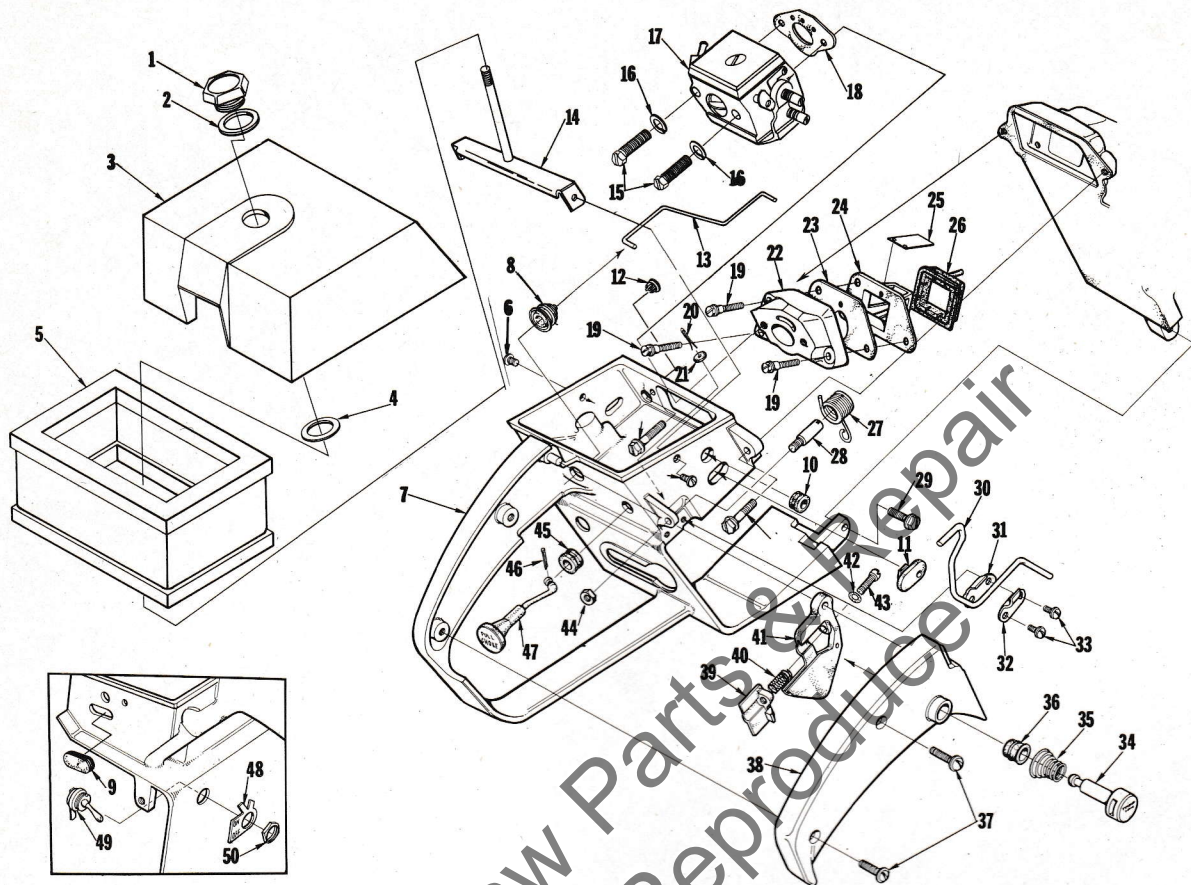
No.	Description	Part No.	EZ-10 CHIPPER	Qty.	No.	Description	Part No.	EZ-10 CHIPPER	Qty.
1	SCREW-retaining	65321	x x	6	21	SCREW-fil. drivecase retainer	65157	x x	1
* 2	TANK-fuel and oil	65037-4	x x	1	22	"O" RING	65127	x x	1
3	GASKET-fuel and oil tank	65046	x x	1	23	ROLLERS-needle (set of 28)	A-65009	x x	1
* 4	COVER-fuel and oil tank	A-50694-1	x x	1	24	ROD-connecting	A-65213	x x	1
5	SCREW-fil, 8-32 x 5/8	82146	x x	9		Includes:			
6	SCREW-fil, 8-32 x 1-1/4	82152	x x	1	25	BEARING-needle	65007	x x	1
7	CRANKCASE	A-65202	x x	1	26	SCREW-soc. hd., 8-32 x 9/16	80805	x x	2
	Includes:				27	PISTON & PIN	A-65197-A	x x	1
8	SEAL	65019	x x	1		Includes:			
9	STUD-cylinder	55871	x x	4	28	PISTON RING	65193	x x	1
10	PIN-dowel	65153	x x	1	29	RING-piston pin retaining	65261	x x	2
11	BEARING-roller	65179	x x	1	*	MUFFLER	A-68254	x x	1
12	KEY-woodruff	65126	x x	1		Includes:			
13	CRANKSHAFT	65006-1	x x	1	30	SCREW-shoulder	64133-A	x x	2
14	SCREW-bearing retaining	59704	x x	2	*31	CAP-muffler	68253-1	x x	1
15	WASHER-lock special	63905	x x	2	32	SCREW-hex hd., 10-32 x 3/8	80870	x x	3
16	BEARING-ball	65044-S	x x	1	*33	BODY-muffler	A-65152-2	x x	1
17	RING-retaining	65045	x x	1	34	CYLINDER	A-65036-1	x x	1
*18	DRIVECASE	A-50689	x x	1	35	SPARK PLUG	65130-S	x x	1
	Includes:				36	NUT-hex, 1/4-28	81065-2	x x	4
19	BOLT-guide bar	58753	x x	2	37	WASHER-lock, 1/4	83009	x x	4
20	SEAL	65019	x x	1	38	VALVE-compression release	A-65184	x x	1
					39	GASKET-cylinder	65018	x x	1

\* Denotes new parts

Optional Wheels EZ-10

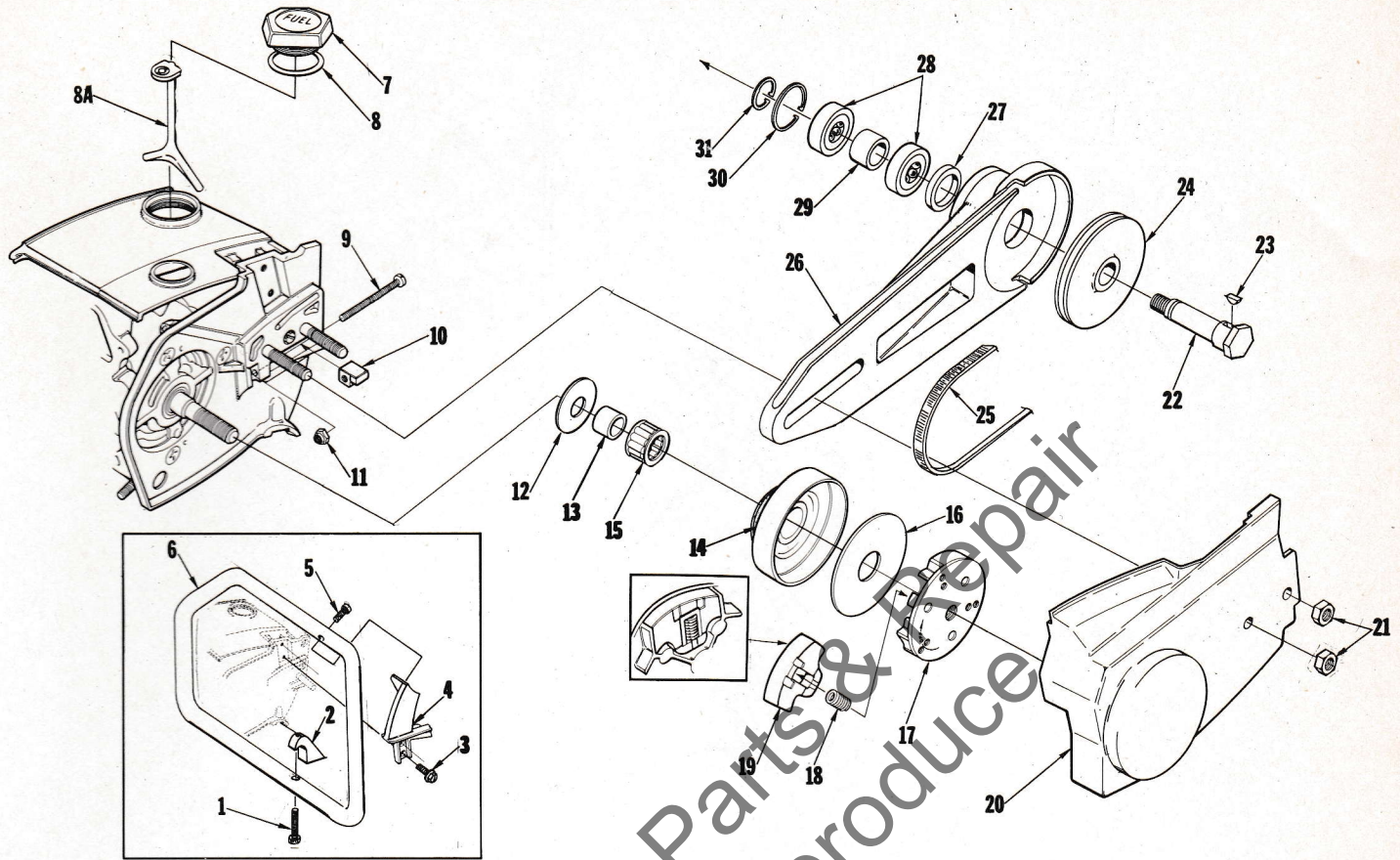
Description	Part No.	Qty.	Description	Part No.	Qty.
* WHEEL-aluminum	50512-S	1	* WHEEL-metal	50509-S	1
* WHEEL-copper	50613-S	1	* WHEEL-stainless steel	50511-S	1
* WHEEL-ductile iron	50506-S	1	* WHEEL-transite	50510-S	1
* WHEEL-masonry	50508-S	1	* BLADE-saw (carbide tipped)	50692	1

ALWAYS FURNISH MODEL AND SERIAL NUMBER WHEN ORDERING PARTS.



No.	Description	Part No.	EZ-10 CHIPPER	Qty.	No.	Description	Part No.	EZ-10 CHIPPER	Qty.
1	NUT-cover mounting	A-65272	x x	1	27	SPRING-release valve	65174	x x	1
2	WASHER-nylon	54588	x x	1	28	POST-spring	65023	x x	1
* 3	COVER-air filter	53705-2	x x	1	29	SCREW-hex, 12-24 x 5/8	80676	x x	3
4	RING-retaining	53319-A	x x	1	30	LEVER-release	65173	x x	1
* 5	FILTER ELEMENT-air	50422	x x	1	31	PLATE-lever	65092	x x	1
6	SCREW-pan, 8-32 x 3/8	80577	x x	2	32	CLAMP-lever	65093	x x	1
* 7	HANDLE-throttle	A-50425-1	x x	1	33	SCREW-pan, 6-32 x 3/8	80571	x x	2
8	BOOT-throttle rod	67634	x x	1	34	LOCK-throttle	65171-A	x x	1
9	PLUG-rubber	53733	x x	1	35	SPRING-throttle lock	64677	x x	1
10	GROMMET-idle adjusting	68197	x x	1	36	BUSHING	67752	x x	1
*11	GROMMET-"Hi-Lo"	68196-1	x x	1	37	SCREW-pan, 8-32 x 1/2	80560	x x	2
*12	GROMMET-oil line	65085-1	x x	1	38	COVER-throttle handle	65042-3A	x x	1
13	ROD-throttle	65056	x x	1	39	STOP-throttle adjustment	65147-A	x x	1
*14	BRACKET-air filter cover	A-53715-1	x x	1	40	SPRING-throttle stop	65188	x x	1
15	SCREW-hex, 10-32 x 1-5/8	82165	x x	2	41	TRIGGER-throttle	65031	x x	1
16	WASHER-lock #10	83046	x x	2	42	"O" RING	65260	x x	1
*17	CARBURETOR	A-50676	x x	1	43	SCREW-pan hd., 6-40 x 1	82198	x x	1
18	GASKET-carburetor	65016	x x	1	44	NUT-hex, 6-32	81126	x x	1
19	SCREW-shoulder	64349-A	x x	3	45	GROMMET-choke	64862	x x	1
20	PIN-cotter	86301	x x	1	46	PIN-cotter	86324	x x	1
21	WASHER-felt	63290	x x	1	47	ROD-choke	65072-1	x x	1
22	MANIFOLD-intake	A-65154-1A	x x	1	48	PLATE-"On-Off"	63910	x x	1
23	GASKET-reed valve seat	65014	x x	1	49	SWITCH	A-63938	x x	1
24	SEAT-reed valve	65010	x x	1		Includes:			
25	REED-valve	65012-A	x x	4	50	NUT-hex	72084-A1	x x	1
26	RETAINER-reed valve	65011-A	x x	1					

\* Denotes new parts



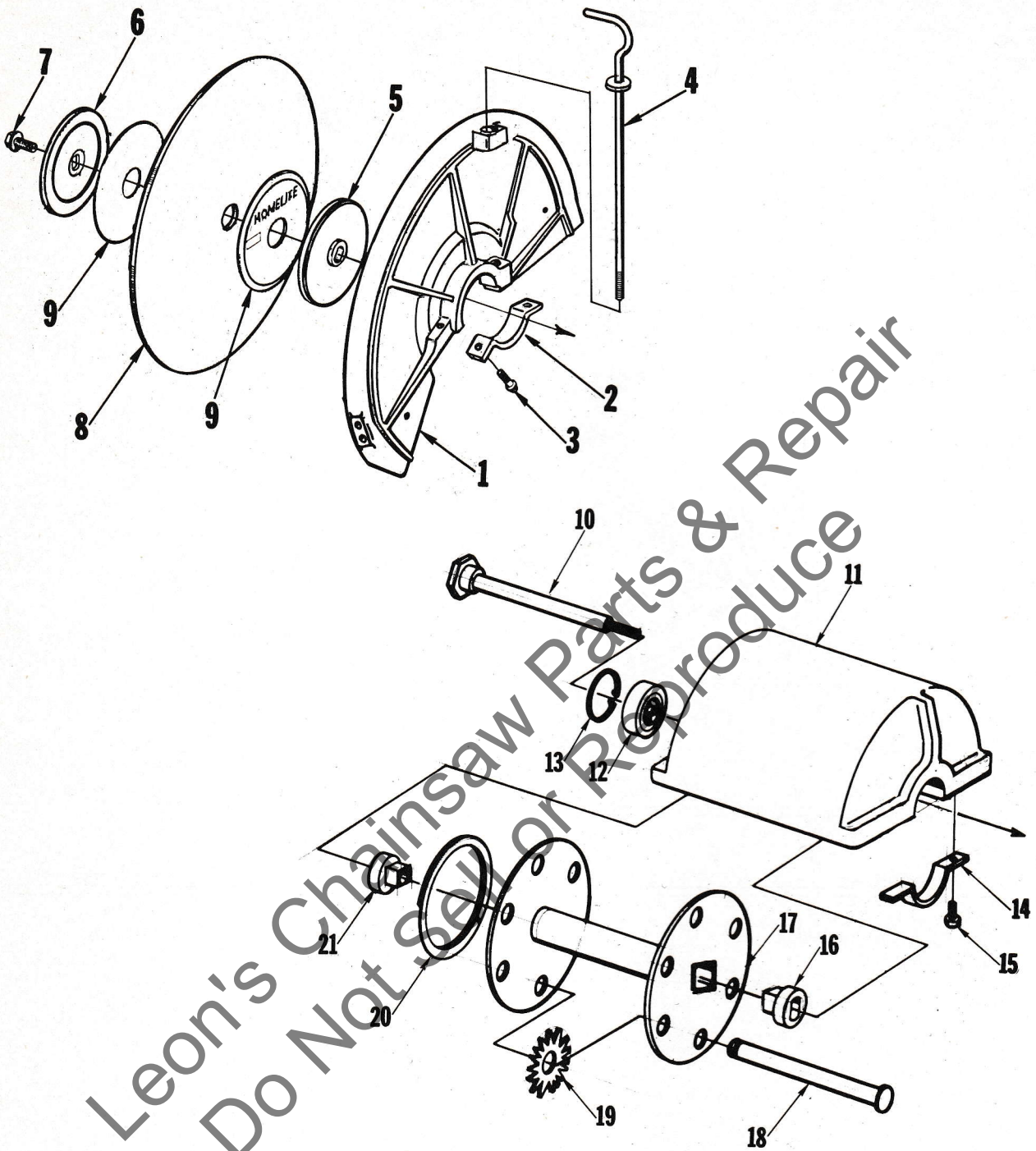
No.	Description	Part No.	EZ-10	CHIPPER	Qty.	No.	Description	Part No.	EZ-10	CHIPPER	Qty.
* 1	SCREW-soc. hd., 10-32 x 1-1/2	82200	x	x	2	16	WASHER-thrust (inner)	65024-1	x	x	1
* 2	SPACER-handle bar	50680-2	x	x	2	17	PLATE-clutch	65146-1	x	x	1
3	SCREW-hex Spinlock, 10-32 x 5/8	80704	x	x	2	18	SPRING-clutch	65217	x	x	3
* 4	BRACKET-handle bar	53659-2	x	x	1	19	SHOE-clutch	65892	x	x	3
5	SCREW-soc. hd., 10-32 x 7/8	82169	x	x	1	*20	COVER-drivecase	53646-2	x	x	1
* 6	HANDLE BAR	A-50436-1	x	x	1	21	NUT-hex, 5/16-18	81196	x	x	2
* 7	CAP-fuel filler	A-65283-A	x	x	1	*22	SHAFT-blade	53675	x	x	1
	Includes:					23	KEY-woodruff	40128	x	x	1
8	GASKET-cap fuel filler	58957	x	x	1	*24	PULLEY-driven	53667	x	x	1
	VALVE-check (not shown)	63718	x	x	1	*25	BELT-drive	53269	x	x	1
8A	RETAINER-fuel cap	68751	x	x	1	*26	ARM-blade	A-53708-1	x	x	1
9	ADJUSTING SCREW-guide bar	65175-A	x	x	1	*27	SPACER-inner	53666	x	x	1
10	ADJUSTING PIN-guide bar	65112-1	x	x	1	*28	BEARING-ball	53682-S	x	x	2
11	NUT-hex, 10-32	81109-2	x	x	1	*29	SPACER-outer	53665	x	x	1
12	WASHER-thrust (outer)	58833	x	x	1	*30	RING-retaining	30868	x	x	1
13	RACE-inner	55584	x	x	1	*31	RING-retaining	53683	x	x	1
14	PULLEY & DRUM	A-50502	x	x	1						
15	Includes: BEARING-needle	72311	x	x	1						

\* Denotes new parts

#### TOOLS

A-24290	BRACKET ROTOR REMOVAL	24292	PLUG-seal removal
A-24060	WRENCH-spanner (clutch)	24298	PLUG-bearing and seal
23136-1	FIXTURE-body assembling	24320	BIT-Posidriv #3
24295	COLLAR-bearing assembling	A-24309	JACKSCREW
24291	SLEEVE-seal (drivecase)	24294	PLUG-needle bearing assembling
24297	SLEEVE-seal (crankcase)	A-24284	WRENCH-combination
24299	ANVIL-crankshaft installation	*24472	WRENCH-blade removal
24300	SLEEVE-crankshaft bearing		

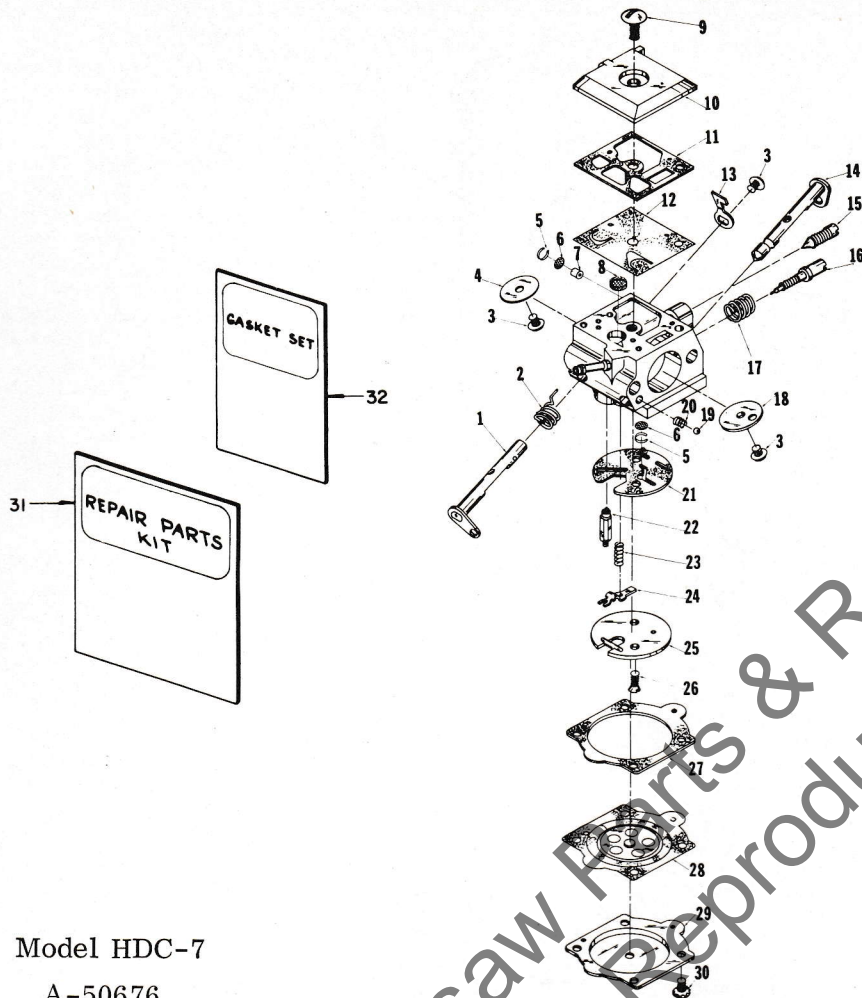
ALWAYS FURNISH MODEL AND SERIAL NUMBER WHEN ORDERING PARTS.



No.	Description	Part No.	EZ-10 CHIPPER	Qty.
* 1	GUARD-blade	53645-2	x	1
* 2	CLAMP-blade guard	50462-1	x	1
3	SCREW-hex hd., 1/4-20 x 13/16	80573	x	1
* 4	BOLT-hook	A-50463-1	x	1
* 5	WASHER-inner	53670-2	x	1
* 6	WASHER-outer	53671-2	x	1
* 7	BOLT-blade	50491	x	1
* 8	WHEEL-masonry	50508-S	x	1
9	Includes: SPACER-blotter	24475	x	2
*10	SHAFT	50654	x	1
*11	GUARD-cutter	50559-2	x	1

No.	Description	Part No.	EZ-10 CHIPPER	Qty.
12	BEARING-ball	63107-S	x	1
*13	RING-retaining	31746	x	1
*14	CLAMP-guard	50650-1	x	1
15	SCREW-hex Spinlock, 1/4-20 x 5/8	80581	x	2
*16	INSERT	50651	x	1
*17	HUB & PLATE	A-50657	x	1
*18	PIN-cutter	50647	x	3
*19	CUTTER- (120 per Bundle)	A-50696	x	1
*20	RING-retaining	50659	x	1
*21	INSERT-outer	50652	x	1

\* Denotes new parts



Model HDC-7  
A-50676

No.	Description	Part No.	Qty.	No.	Description	Part No.	Qty.
1	SHAFT-throttle	67362	1	18	VALVE-choke	67365	1
2	SPRING-throttle return	† 67376	1	19	BALL-choke friction	† 60051	1
3	SCREW-valve	† 67372	3	20	SPRING-choke friction	† 64238	1
4	VALVE-throttle	67363	1	21	GASKET-circuit	‡ 67367	1
5	RING-screen retaining	† 67360	2	22	VALVE-inlet needle	† 64229	1
6	SCREEN-check valve	† 67381	2	23	SPRING-metering lever	† 67378	1
*7	JET-limiting	68461	1	24	LEVER-metering	† 67383	1
8	SCREEN-fuel inlet	† 64243	1	25	PLATE-circuit	67382	1
9	SCREW-fuel pump cover	67374	1	26	SCREW-circuit plate	67375	2
10	COVER-fuel pump	67361	1	27	GASKET-metering diaphragm	‡ 64231	1
11	GASKET-fuel pump	‡ 67368	1	28	DIAPHRAGM-metering	† 67371	1
12	DIAPHRAGM-fuel pump	† 67370	1	29	COVER-metering diaphragm	64224	1
13	STOP-throttle	67366	1	30	SCREW-metering cover	64689	4
14	SHAFT-choke	67364	1	31	REPAIR KIT	67384	1
15	SCREW-idle adjustment	67373	1	32	GASKET SET	† 67369	1
16	NEEDLE-"Lo"	† 67379	1		REPAIR KIT-check valve	65386	1
17	SPRING-needle adjusting	† 67377	1				

\* Denotes new parts

‡ Indicates contents of Gasket Set  
† Indicates contents of Repair Kit #67384

ACCESSORIES

A-24335	KIT-starting rope	A-50564	ATTACHMENT-Chipper
A-67947	KIT-heat exchanger	24352	COMPOUND-sealing (Duxseal)
A-24481	KIT-ignition	23475	LACQUER-touch-up (red)
A-50561	KIT-wet cutting	64599	CAN-safety
A-68490	MUFFLER-stack	24399	OIL-engine
A-65256	ARRESTOR-spark (Louver Muffler)	64598	GOGGLES-safety
A-50688	ATTACHMENT-cut off	*68848	REEL-250' - #4 starter rope

Part No.	Description	Qty.	Part No.	Description	Qty.	Part No.	Description	Qty.	Part No.	Description	Qty.
23136-1	Body	1	*53670-2	Washer-inner	1	65102	Lock-spring	1	67372	Screw-valve	3
23475	Spray Can-red	1	*53671-2	Washer-outer	1	65103	Shield-pulley	1	67373	Screw-idle adj.	1
A-24060	Wrench-spanner	1	*53675	Shaft-blade	1	65107	Spring-rewind	1	67374	Screw	1
A-24284	Wrench	1	*53682-S	Bearing-ball	2	65108	Pawl-starter	2	67375	Screw	2
A-24290	Bracket	1	*53683	Ring-retaining	1	65109	Stud-pawl	2	67376	Spring-carb.	1
24291	Sleeve-seal	1	*53705-2	Cover-air filter	1	65110	Washer-pawl	2	67377	Spring-carb.	2
24292	Plug-seal	1	*A-53708-1	Arm-blade	1	65112-1	Pin-guide bar	1	67378	Spring-carb.	1
24294	Plug	1	*A-53715-1	Bracket	1	65113	Shield-inner	1	67379	Needle-carb.	2
24295	Collar-bearing	1	53733	Plug-rubber	1	65114	Shield-outer	1	67381	Screen-carb.	2
24297	Sleeve-seal	1	54536	Washer-nylon	1	65116	Bushing	1	67382	Plate-carb.	1
24298	Plug-bearing	1	55584	Race-inner	1	65118	Rope-starter	1	67383	Lever-carb.	1
24299	Anvil	1	55871	Stud	4	65120	Spring-pawl	2	67384	Repair Kit-carb.	1
24300	Sleeve-crankshaft	1	58319-A	Ring-retaining	1	65125	Ring-retaining	1	67634	Boot-throttle rod	1
A-24309	Jackscrew	1	58753	Bolt-guide bar	2	65126	Key-woodruff	1	67752	Bushing	1
24320	Bit-#3	1	58833	Washer-outer	1	65127	"O" Ring	1	A-67947	Kit-heat exchanger	1
A-24335	Kit-starting rope	1	58957	Gasket	1	65130-S	Spark Plug	1	68046	Grommet	1
24352	Compound-sealing	1	59704	Screw-retaining	2	65135	Grommet	1	A-68053	Line-fuel	1
24399	Oil-engine	1	60051	Ball-choke	1	65146-1	Plate-clutch	1	*68196-1	Grommet-Hi-Lo	1
*24472	Wrench	1	63107-S	Bearing-ball	1	65147-A	Stop-throttle adj.	1	68197	Grommet	1
24475	Spacer-blotter	2	63290	Washer-felt	1	*A-65152-2	Body-muffler	1	*68253-1	Cap-muffler	1
A-24481	Kit-ignition	1	63718	Valve-check	2	65153	Pin-dowel	1	*A-68254	Muffler	1
28008	Lock	1	63905	Washer-lock	2	A-65154-1A	Spacer-valve	1	A-68490	Muffler-stack	1
28028	Washer-thrust	as req'd	63910	Plate-on-off	1	65157	Screw-retainer	1	*68700	Screw-hex	1
*30868	Ring-retaining	1	A-63920	Filter-fuel	1	A-65170	Pulley & Cup	1	*68701	Rotor-magneto	1
*31746	Ring-retaining	1	A-63938	Switch	1	65171-A	Lock-throttle	1	*68705	Seal-felt	1
40128	Key-woodruff	1	A-63939	Lead-ground	1	65173	Lever-release	1	*68708	Box-breaker	1
*50422	Filter-air	1	64021	Screw-coil	2	65174	Spring-valve	1	*A-68710	Points-breaker	1
*A-50425-1	Handle-throttle	1	64083-1	Filter-fuel	1	65175-A	Screw-guide bar	1	68711	Condenser	1
*A-50436-1	Handle Bar	1	64133-A	Screw	2	65179	Bearing-roller	1	*68712	Lead Group	1
*50462-1	Clamp	1	64224	Cover-dia.	1	65183	Grip-starter rope	1	*68715	Screw	2
*A-50463-1	Bolt-hook	1	64229	Valve-needle	1	A-65184	Valve-release	1	68716	Core & Coil	1
*50491	Bolt-blade	1	64231	Gasket	1	65185	Bushing	1	68751	Retainer-fuel can	1
A-50502	Pulley & Drum	1	64238	Spring	1	65188	Spring	1	*68773-1	Seal-felt	1
*50506-S	Wheel-ductile iron	1	64243	Screen	1	65189	Screen-af	1	*68774-1	Gasket	1
*50508-S	Wheel-masonry	1	64349-A	Screw-shoulder	3	65193	Piston Ring	1	*68848	Reel-250 ft.	1
*50509-S	Wheel-metal	1	64598	Goggles-safety	1	A-65197-A	Piston & Pin	1	72084-A1	Nut-hex	1
*50510-S	Wheel-transite	1	64599	Can-safety	1	A-65198	Terminal	1	72311	Bearing-needle	1
*50511-S	Wheel-stainless	1	64677	Spring	1	A-65202	Crankcase	1	FASTENING PARTS		
*50512-S	Wheel-aluminum	1	64689	Screw Assembly	4	65205	Lead-hi tension	1	80560	8-32 x 1/2	2
*50559-2	Guard-cutter	1	64862	Grommet-choke	1	65207	Nut-hex	1	80571	6-32 x 3/8	4
A-50561	Kit-wet cutting	1	65006-1	Crankshaft	1	A-65213	Rod	1	80573	1/4-20 x 13/16	1
A-50564	Attachment	1	65007	Bearing	1	65217	Spring-clutch	3	80577	8-32 x 3/8	4
*50613-S	Wheel-copper	1	A-65009	Rollers-needle	1	65218	Insert-rope	1	80581	1/4-20 x 5/8	2
*50647	Pin-cutter	3	65010	Seat-valve	1	A-65222-1	Housing-starter	1	80630	6-32 x 1/2	1
*50650-1	Clamp-guard	1	65011-A	Retainer-valve	1	A-65256	Spark Arrestor	1	80676	12-24 x 5/8	3
*50651	Insert	1	65012-A	Reed-valve	4	65260	"O" Ring	1	80704	10-32 x 5/8	4
*50652	Insert-outer	1	65014	Gasket	1	65261	Ring	2	80805	8-32 x 9/16	2
*50654	Shaft	1	65016	Gasket-carb.	1	A-65272	Nut	1	80870	10-32 x 3/8	3
*A-50657	Hub & Plate	1	65018	Gasket-cyl.	1	*A-65283-A	Cap-fuel	1	81065-2	Nut-1/4-28	4
*50659	Ring-retaining	1	65019	Seal	2	65321	Screw	6	81109-2	Nut-10-32	2
*A-50676	Carburetor	1	65023	Post-spring	1	65386	Repair Kit	1	81112	Nut-5/16-24	1
*50680-2	Spacer	2	65024-1	Washer-inner	1	65892	Shoe-clutch	3	81126	Nut-6-32	1
A-50688	Attachment	1	65031	Trigger	1	67191	Stud-drive #2	3	81196	Nut-5/16-18	2
*A-50689	Drivecase	1	A-65036-1	Cylinder	1	67360	Ring-screen	2	82146	8-32 x 5/8	9
*50690	Retainer-cover	1	*65037-4	Tank-fuel & oil	1	67361	Cover-fuel pump	1	82152	8-32 x 1-1/4	1
*50692	Blade	1	65042-3A	Cover	1	67362	Shaft-throttle	1	82165	10-32 x 1-5/8	2
*A-50694-1	Cover-fuel tank	1	65044-S	Bearing-ball	1	67363	Valve-throttle	1	82169	10-32 x 7/8	1
*A-50696	Cutter	1	65045	Ring-retaining	1	67364	Shaft-choke	1	82198	6-40 x 1	1
*53269	Belt-drive	1	65046	Gasket	1	67365	Valve-choke	1	*82200	10-32 x 1-1/2	2
*53645-2	Guard-blade	1	65056	Rod-throttle	1	67366	Stop-throttle	1	83004-1	Washer-lock #6	1
*53646-2	Cover-drivecase	1	65072-1	Rod-choke	1	67367	Gasket-circuit	1	83009	Washer-lock, 1/4	4
*53659-2	Bracket	1	*65085-1	Grommet	1	67368	Gasket	1	83046	Washer-#10	2
*53665	Spacer-outer	1	65092	Plate-lever	1	67369	Gasket Set	1	84065-1	Washer-flat, 5/16	1
*53666	Spacer-inner	1	65093	Clamp-lever	1	67370	Diaphragm	1	86301	Pin-cotter	1
*53667	Pulley-driven	1	65095-2	Cover-starter	1	67371	Diaphragm	1	86324	Pin-cotter	1

\* Denotes new parts

**HOMELITE®**

A Textron  
DIVISION

PORT CHESTER, N.Y. U.S.A.

PRINTED IN U. S. A.

E1172HEC