

# HOMELITE®

DM 50 MULTI-PURPOSE SAW



Cuts expansion joints in curbs and sidewalks.



Used by firemen for forcible entry and ventilation of burning buildings.

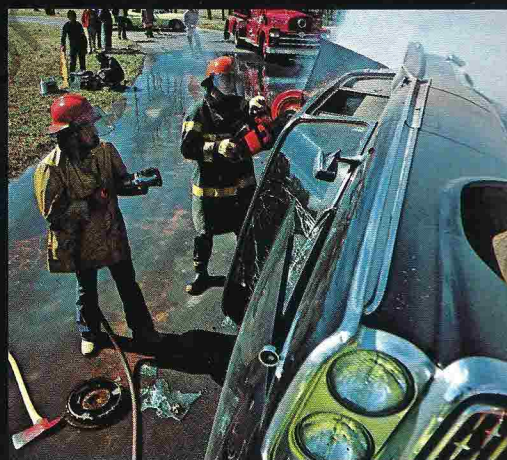
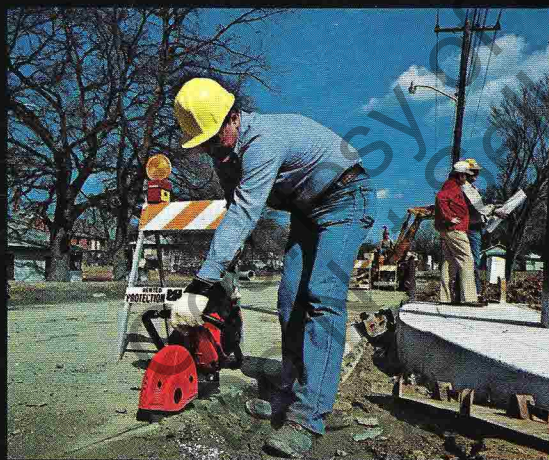


Cuts openings in prestressed textured concrete panels.

Easily handles concrete storm sewer pipes.



Makes right angle cuts for patching and repairing asphalt pavement.



Enables rescue workers to free accident victims quickly.



Cuts usable parts from wrecked cars for salvage.

Makes a clean cut in drainage tile.



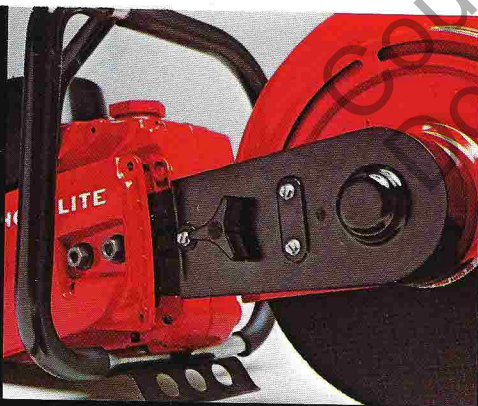
# The Homelite DM 50.

## The multi-purpose saw that's tough on the job, not on you.

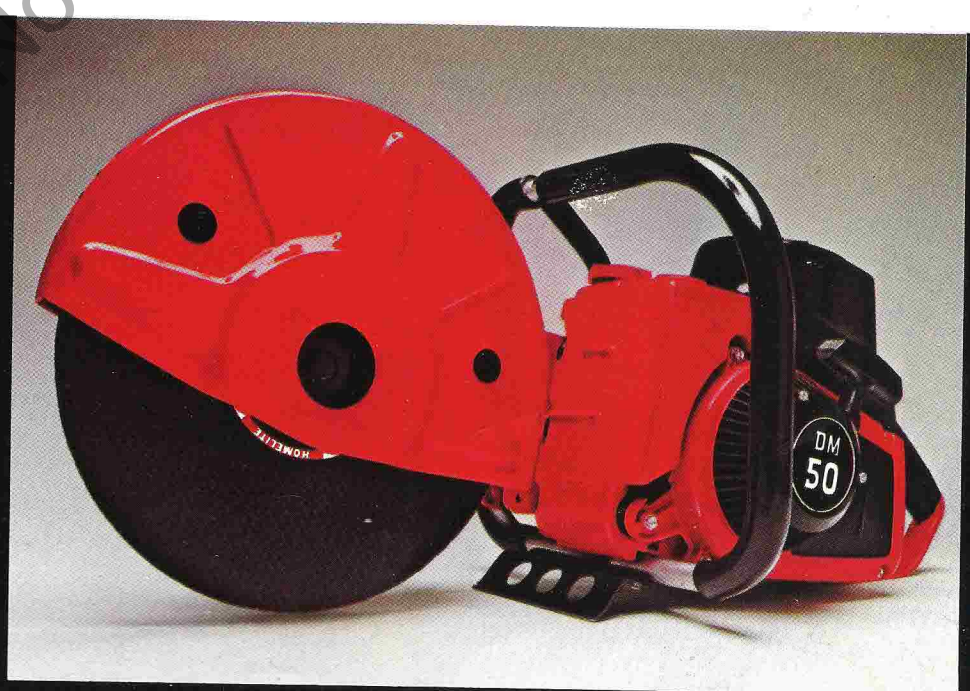
The versatile DM 50 has all the power, performance, portability and dependability you've come to expect from Homelite®. And a lot more. It's one of a new generation of Homelite saws that are better engineered, making them easier to start, more reliable and more comfortable to operate than previous models. Just look at all its features, and you'll see what we mean:

- Advanced engineering gives the 4.5 cu. in. engine **increased service life** over any previous Homelite multi-purpose saw engine, and a higher rpm for **increased cutting speed and efficiency**.
- A superior **vibration isolation** system makes the DM 50 much **more comfortable and less tiring** to operate. Five rubber shock absorbers between the engine and the handles absorb most of the vibration, so your arms don't have to.
- An **improved air filter** system warns when filter needs cleaning by causing engine to lose power automatically. Prevents contaminants from entering the engine.
- The DM 50 takes a **12" wheel**. The large size **maximizes operating time** before the wheel wears down.
- The placement of the front handle at the machine's center of gravity gives the DM 50 **better balance**, and gives you **more control**.
- **Starting is fast and easy**, in all weather conditions, because Homelite's exclusive Pulsar® capacitor discharge ignition system produces a hotter spark.
- The DM 50 is **easier on your ears**, because Homelite's exclusive Softone™ dual chamber muffler reduces noise, not power, and directs the exhaust away from you.
- The wheel guard on the DM 50 is made of stamped steel—**stronger and more durable** than aluminum. It can be adjusted to 90° with a positive lock in any position.
- The blade arm is **reversible**, for balanced center position cutting or right-hand flush cutting.
- The engine belt is a **standard "A" section, V-cog type**, widely available at Homelite dealers or automotive stores, so replacement is easy.
- Our exclusive Power Boost™ squish combustion chamber concentrates the fuel-air mixture for **increased engine power**.
- The front handlebar is coated with thick neoprene rubber, which gives you extra **vibration absorption, a better grip, and more positive control**.

Whatever your cutting needs, you can count on the DM 50. It's designed to cut masonry and metal in a wide variety of construction and emergency situations. It's a truly versatile tool. And when you consider that famous Homelite quality and service are built in, it's a tough saw to beat.



Reversible blade arm.



# THE HOMELITE DM 50 MULTI-PURPOSE SAW.

## Specifications

### Saw

Wheel diameter and type 12" (30.5 cm) reinforced abrasive wheel, up to 4" depth of cut.  
Wheel location Reversible support arm allows changing of wheel and guard location.

Wheel Drive Standard "A" section V-cog belt.

Tools Combination wrench and blade removal tool included.

### Engine

Make and Model Type Homelite  
Air-cooled, 2-cycle, single cylinder, loop scavenged. Can be operated in any position.

Displacement 4.5 cu. in. (74 cc).

Lubrication Pressure vapor oil system. Oil mixed with gasoline 16:1 (6%).

Fuel Tank Capacity 31 oz.

Wheel Speed (no load) 5,750 rpm.

Speed Control Electronic governor built into ignition system limits top speed. Throttle trigger in handle.

Air Cleaner Replaceable paper cartridge filter restricts air flow when dirty and automatically reduces engine speed.

Starting Automatic rewind. Pulsar capacitor discharge ignition.

### General

Handlebars Thick neoprene rubber-coated for extra vibration absorption.

Dimensions 13" wide (33.0 cm), 13" high (33.0 cm), 31" long (78.4 cm).

Weight 27 lbs. (12.3 kg), less fuel and wheel.

Safety Complies with OSHA standards.

## Accessories

### Wet Cutting Kit



### Wet Cutting Kit

A flexible hose with adjustable water flow sprays water on both sides of the wheel and on cutting surface, to keep the wheel cool, reduce dust and lengthen wheel life. Installs on the wheel guard with screw-on fittings. Can be used with a regular garden hose as the water source.

### Cutting Wheels and Blades



### Cutting Wheels and Blades

Homelite abrasive wheels are 5/32" thick and rated at 6,000 rpm with 1" arbor. (Wheels for 7/8" and 20mm arbors are available for competitive model saws.) Wheels are impregnated with grit and resinoid epoxy bonding agents formulated for cutting specific materials, and are fiber-reinforced for added strength and longer wear.

Homelite carbide tip blades are available for forcible entry and emergency uses. They are made of heat-tempered steel with rugged carbide cutting tips, brazed in place.

### Abrasive Wheels and Saw Blades

#### For Homelite DM 50 and Competitive Saws

Part No.	Type	Size
<b>Abrasive Wheels</b>		
64596—BS	Masonry and Concrete	12" x 5/32" x 1"
64597—BS	Metal	12" x 5/32" x 1"
68421—AS	Ductile and Cast Iron	12" x 5/32" x 1"
50508—AS	Masonry and Concrete	10" x 5/32" x 5/8"
50606—AS	Ductile and Cast Iron	10" x 5/32" x 5/8"
50509—AS	Metal	10" x 5/32" x 5/8"
<b>Saw Blade</b>		
60595—S	Carbide Tip	12" x 1/8" x 1"

#### For Competitive Saws

Part No.	Type	Size
<b>Abrasive Wheels</b>		
43230—AS	Masonry and Concrete	12" x 5/32" x 7/8"
43231—AS	Ductile and Cast Iron	12" x 5/32" x 7/8"
43232—AS	Metal	12" x 5/32" x 7/8"
43233—AS	Masonry and Concrete	11-7/8" x 5/32" x 20mm
43234—AS	Ductile and Cast Iron	11-7/8" x 5/32" x 20mm
43255—AS	Metal	11-7/8" x 5/32" x 20mm

## Service

Homelite multi-purpose saws, like all Homelite products, are designed and built for rugged day-in, day-out performance. And Homelite's parts and service program is designed to minimize downtime and costs. When you need service, see your Homelite dealer. He's an expert who constantly updates his training. And for additional service backup, Homelite has a nationwide network of factory service branches. When you need parts or accessories, Homelite's efficient warehousing and distribution system gets them to your dealer fast.

**HOMELITE**  
**TEXTRON**

Homelite Division of Textron Inc.